

SPEED READ

- Loads on wheels decreased overnight, reflecting reduced CP traffic offset by an increase in CN volumes. On a net basis, volumes declined due to lower traffic across all corridors - Vancouver, Thunder Bay, Prince Rupert, USA/MEX and E. Canada.
- Network fluidity deteriorated overnight, led by an increase in idle car counts on CN by 41% (+200) offset by a decline in idle car counts on CP by 24% (-168). The total count of cars for 4+ days on both railways fell for the fourth consecutive day, down 14% (-86) overnight - currently at 526 cars, the lowest seen in the last 30 days.
- Two days in Week 36 unloads now ahead of prior week's performance by nearly 250 unloads, reflecting improved week over week performance at Prince Rupert and Thunder Bay offset by lower unloads at Vancouver.

Loads on Wheels

- Loads on wheels decreased 6% (-645) overnight, due to reduced volumes on CP offset by higher volumes on CN - combined total at 9,525 and 9% below the trailing 30-day average.
- On a net basis, the decline in loads on wheels indicates reduced traffic across all corridors - Vancouver, Thunder Bay, Prince Rupert, USA/MEX and E. Canada.
- CN volumes increased for the third consecutive day, up (+25) overnight, with higher traffic in the Vancouver and E. Canada corridors offset by lower traffic in the Prince Rupert, Thunder Bay and USA/MEX corridors. System wide CN loads on wheels currently at 5,489 and 5% below the trailing 30-day average.
- CP volumes decreased significantly by 15% (-651) overnight, driven by a decline in volumes across all corridors - Vancouver, Thunder Bay, USA/MEX and E. Canada. CP system wide loads on wheels now at 3,648, the lowest seen in the last 30 days, and 17% below the trailing 30-day average.
- Vancouver currently at 5,850, fell 3% (-205) overnight, now 3% below the trailing 30-day average.
- The Prince Rupert pipeline presently at 1,276, fell significantly by 13% (-197) overnight, and 25% below the trailing 30-day average.
- Thunder Bay volumes decreased significantly by 21% (-138) overnight - now at 523 and 46% above the trailing 30-day average, with 36% of traffic moving on CP.

Hopper Car Rationing

- CN rationed 894 hopper cars in week 34.

Loads Not Moving

- **The count of cars not moving for 48+ hours increased 3% (+32) overnight, reflecting higher counts on CN offset by reduced counts on CP. Idle car counts presently at 1,210 and 57% below the trailing 30-day average.**
- CN
 - **The count of idle cars for 48+ hours increased 41% (+200) overnight - presently at 687 cars.**
 - The number of cars idle for 4+ days fell 15% (-34) overnight - currently at 189 cars, the lowest seen in the last 30 days.
 - The count of cars not moving for 7+ days fell for the fourth consecutive day, down 3% (-1) overnight - presently at 33 cars, the lowest seen in the last 30 days.
 - Vancouver represents 39% of all idle cars.
 - In total 54% of all idle cars are dwelling at origin locations.
- CP
 - **CP idle car counts for 48+ hours fell 24% (-168) overnight - presently at 523 cars.**

- The number of cars idle for 4+ days declined 13% (-52) overnight - currently at 337 cars.
- The number of cars idle for 7+ days fell 19% (-35) overnight - now at 153 cars.
- Vancouver accounts for 53% of all idle cars.
- In total 51% of all idle cars are dwelling at origin locations.

Port Performance

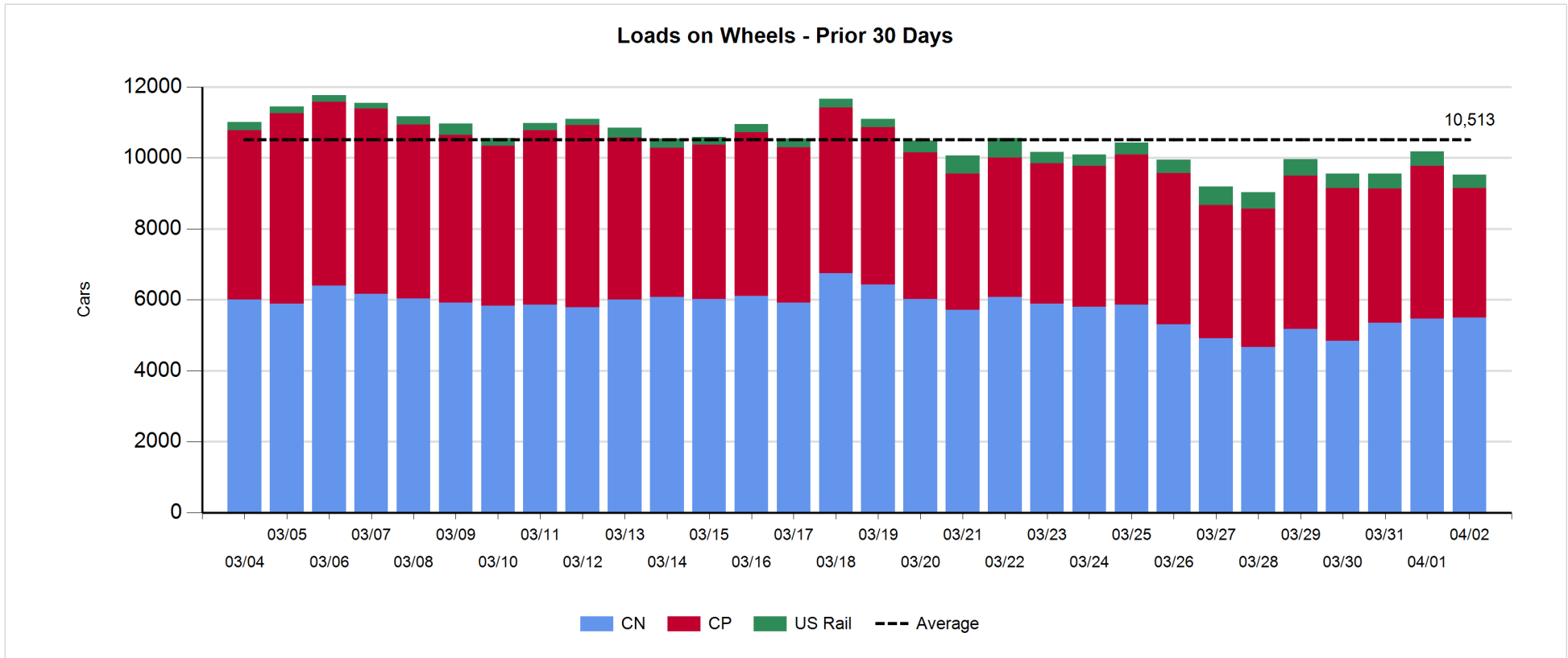
- CN and CP reported a total of 1,035 cars unloaded at the three major ports, now 16% above the trailing 30-day average. Two days in Week 36 unloads now ahead of last week's pace by nearly 250 unloads, reflecting higher unloads at Prince Rupert and Thunder Bay offset by lower unloads at Vancouver.
- Vancouver
 - 701 unloads reported by CN and CP at the Port of Vancouver; CN - 249 and CP - 452. Two days in Week 36 unloads are tracking behind last week's performance by 50 unloads.
 - There are nearly 750 cars on site at Vancouver with 700 cars arriving at the port in the last 24 hours.
 - CN and CP have more than 1,050 cars in British Columbia en route to Vancouver, with more than 650 cars at Kamloops and west, and 56% of traffic moving on CP.
- Prince Rupert
 - Prince Rupert reported 188 unloads, now ahead of last week's unloads after two days by around 200 unloads.
 - Loads on wheels now above 1,000 cars - currently at 1,276 cars.
 - There are fewer than 450 cars west of Jasper en route to Prince Rupert.
 - There are more than 250 cars on site at Prince Rupert with 250 cars arriving at the port in the last 24 hours.
- Thunder Bay
 - 146 unloads were reported at Thunder Bay yesterday. Two days in Week 36 unloads are tracking ahead of last week's pace by 100 unloads.
 - There are more than 100 cars on site at Thunder Bay with zero cars arriving at the port in the prior 24 hours.
 - There are nearly 150 cars en route to Thunder Bay from Winnipeg and east.

Daily Loads on Wheels - 4/2/2019

	E Canada	Prince Rupert	Thunder Bay	USA/MEX	Vancouver	Total
CN	522	1,276	334	333	3,024	5,489
CP	408		189	258	2,793	3,648
Short Line	14				28	42
US Rail				341	5	346
	944	1,276	523	932	5,850	9,525

Change in Loads on Wheels - Prior 24 Hours

	E Canada	Prince Rupert	Thunder Bay	USA/MEX	Vancouver	Total
CN	1	-197	-47	-3	271	25
CP	-32		-91	-73	-455	-651
Short Line	-13				-21	-34
US Rail				15	0	15
	-44	-197	-138	-61	-205	-645



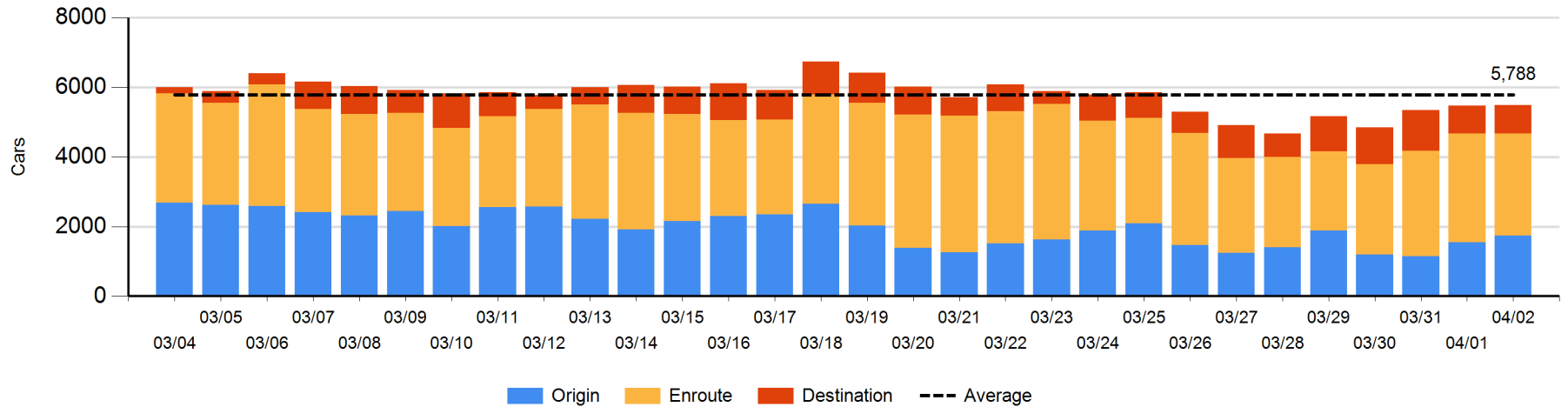
Daily Loads on Wheels By Pipeline Location - 4/2/2019

	E Canada	Prince Rupert	Thunder Bay	USA/MEX	Vancouver	Total
CN						
Origin	99	356	125	165	985	1,730
Enroute	281	647	167	133	1,711	2,939
Destination	142	273	42	35	328	820
	522	1,276	334	333	3,024	5,489
CP						
Origin	103		118	1	471	693
Enroute	301		1	185	1,947	2,434
Destination	4		70	72	375	521
	408		189	258	2,793	3,648
US Rail / Short Line						
Origin						
Enroute	3			260		263
Destination	11			81	33	125
	14			341	33	388

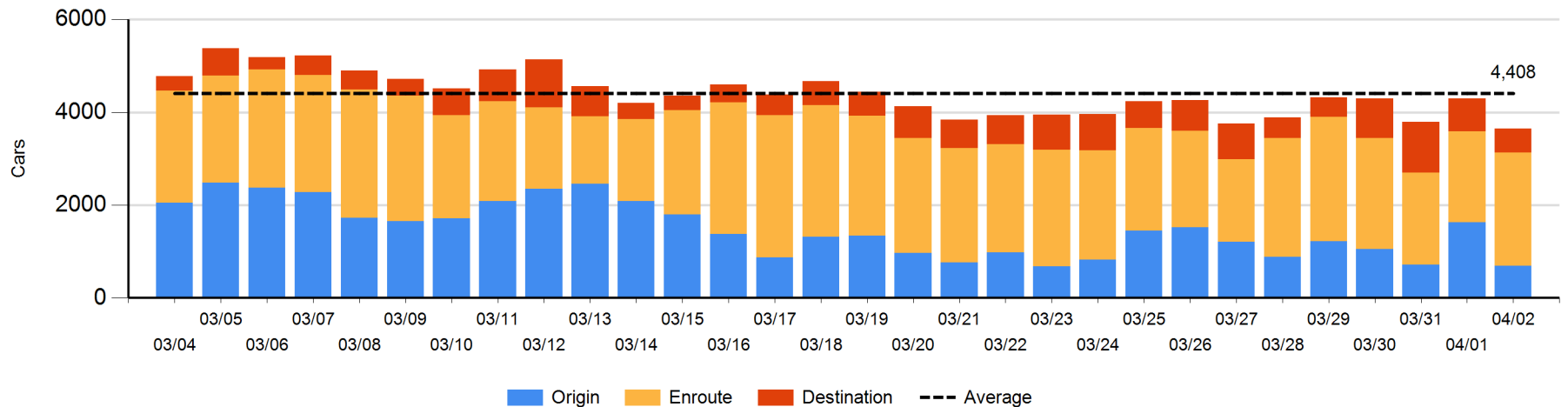
Change in Daily Loads on Wheels By Pipeline Location - Prior 24 Hours

	E Canada	Prince Rupert	Thunder Bay	USA/MEX	Vancouver	Total
CN						
Origin	83	-116	8	3	204	182
Enroute	1	-148	0	-1	-33	-181
Destination	-83	67	-55	-5	100	24
	1	-197	-47	-3	271	25
CP						
Origin	-117		0	-1	-817	-935
Enroute	88		0	-106	493	475
Destination	-3		-91	34	-131	-191
	-32		-91	-73	-455	-651
US Rail / Short Line						
Origin						
Enroute	1			-38		-37
Destination	-14			53	-21	18
	-13			15	-21	-19

CN Loads on Wheels by Pipeline Location - 4/2/2019



CP Loads on Wheels by Pipeline Location - 4/2/2019

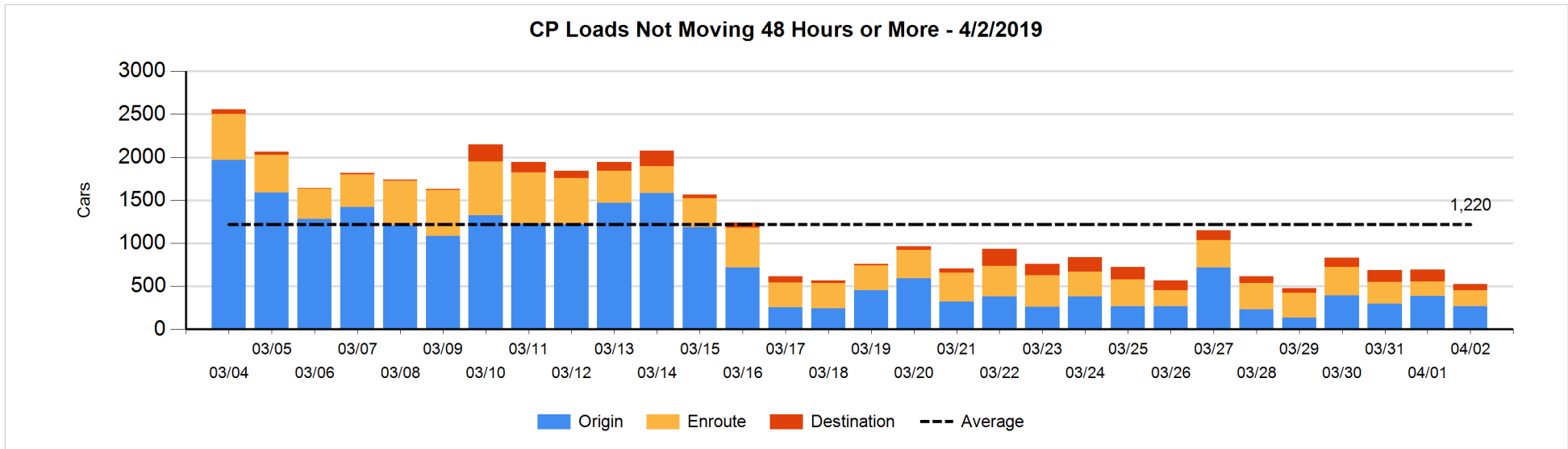
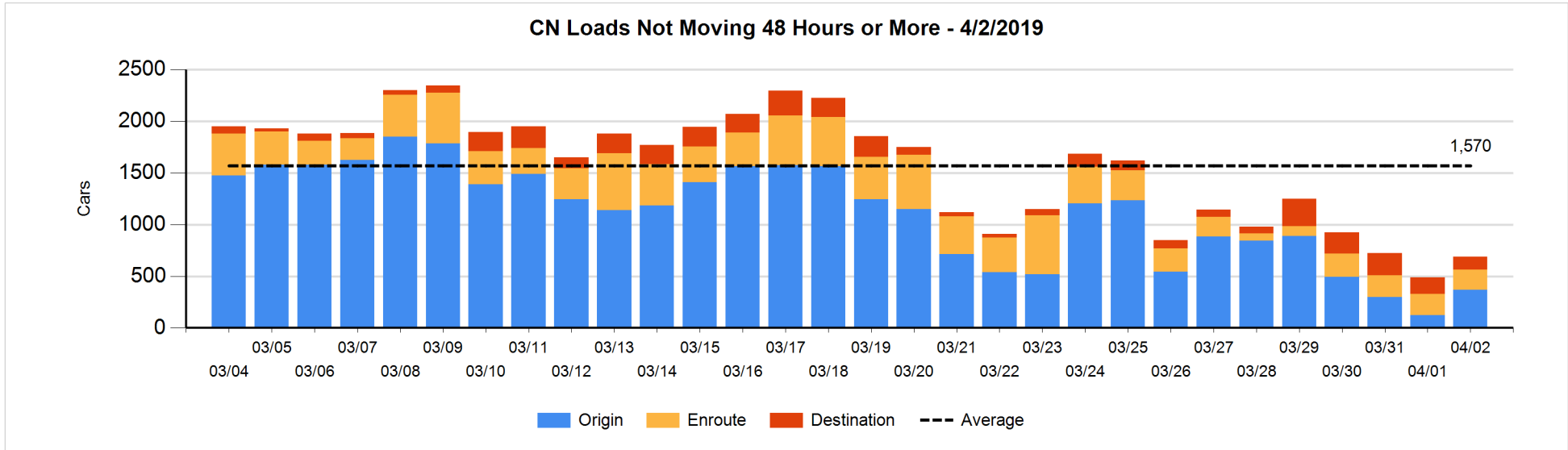


Loads Not Moving 48 Hours or More - 4/2/2019

	E Canada	Prince Rupert	Thunder Bay	USA/MEX	Vancouver	Total
CN						
Origin		36	116	50	166	368
Enroute	95	10	28	12	49	194
Destination	60	5	1	6	53	125
	155	51	145	68	268	687
CP						
Origin	100		67	1	98	266
Enroute	7		1	65	115	188
Destination	1			3	65	69
	108		68	69	278	523
US Rail / Short Line						
Origin						
Enroute				36		36
Destination				14	24	38
				50	24	74

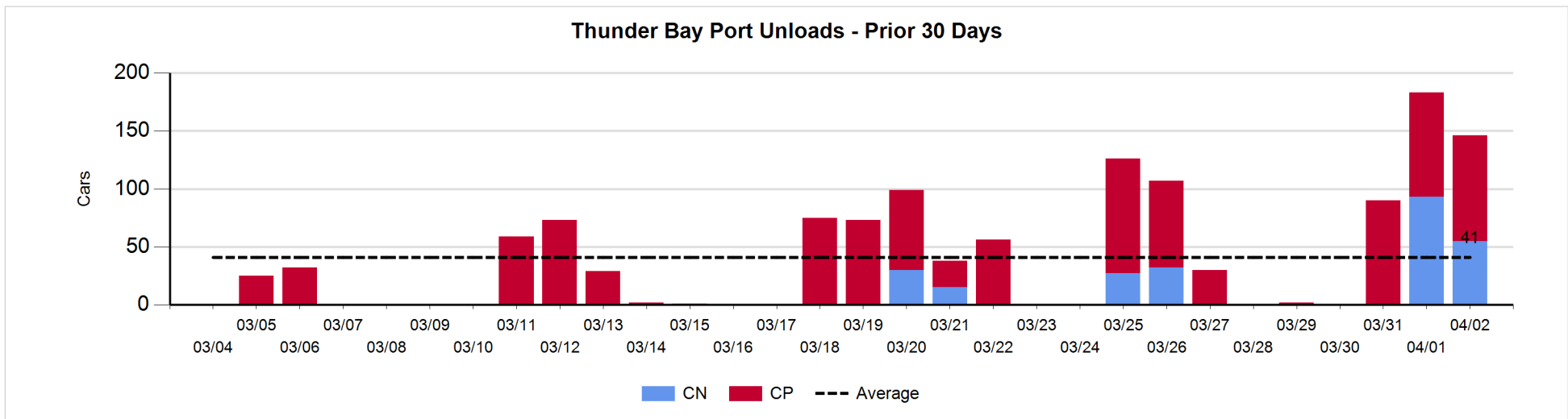
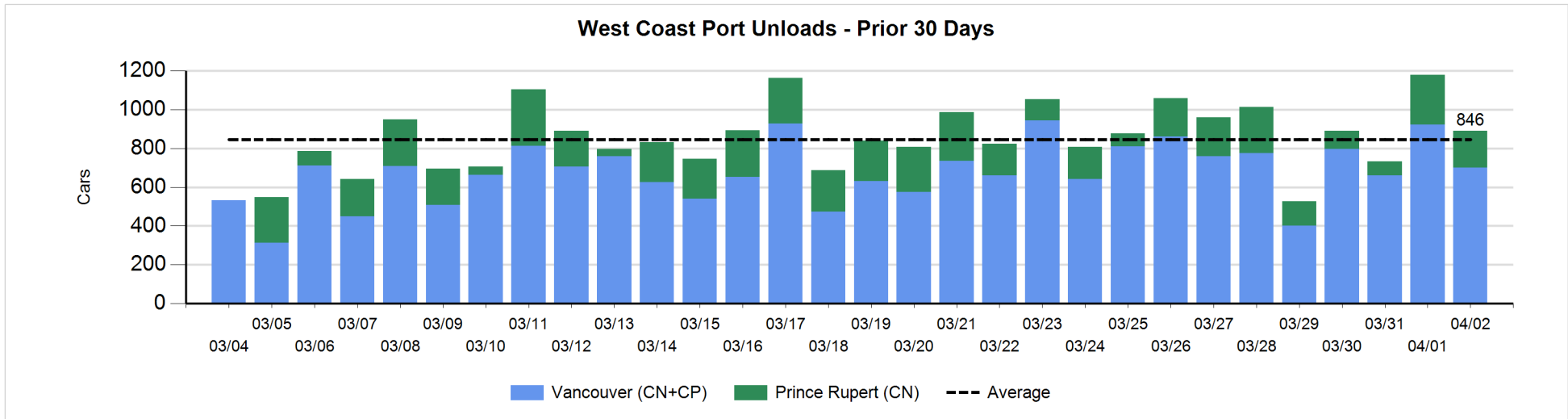
Change in Loads Not Moving 48 Hours or More - 4/2/2019

	E Canada	Prince Rupert	Thunder Bay	USA/MEX	Vancouver	Total
CN						
Origin		-68	116	50	150	248
Enroute	-37	-1	0	4	21	-13
Destination	-36	0	-11	0	12	-35
	-73	-69	105	54	183	200
CP						
Origin	-116		0	0	-5	-121
Enroute	-13		0	7	25	19
Destination	-1			3	-68	-66
	-130		0	10	-48	-168
US Rail / Short Line						
Origin						
Enroute				5		5
Destination	-14			-2	-14	-30
	-14			3	-14	-25



Port Unloads - 4/2/2019

	Prince Rupert	Vancouver	West Coast Total	Thunder Bay	Total
CN	188	249	437	55	492
CP		452	452	91	543
	188	701	889	146	1,035



Port Terminal Status

Vancouver

Daily Activity for 4/2/2019

	Cars Arrived	Cars Received in Interchange	Cars Delivered in Interchange	Cars Placed for Unloading	Loads on Wheels at Destination As of 4/2/2019
CN	260	4		265	328
CP	438		4	432	375
SRY				17	28

Port Unloads

	04/02	04/01	Week To Date	Last Week
CN	249	430	679	2,124
CP	452	493	945	2,937
SRY	25	6	31	101

Age Profile of Loaded Cars Waiting Placement for Unloading

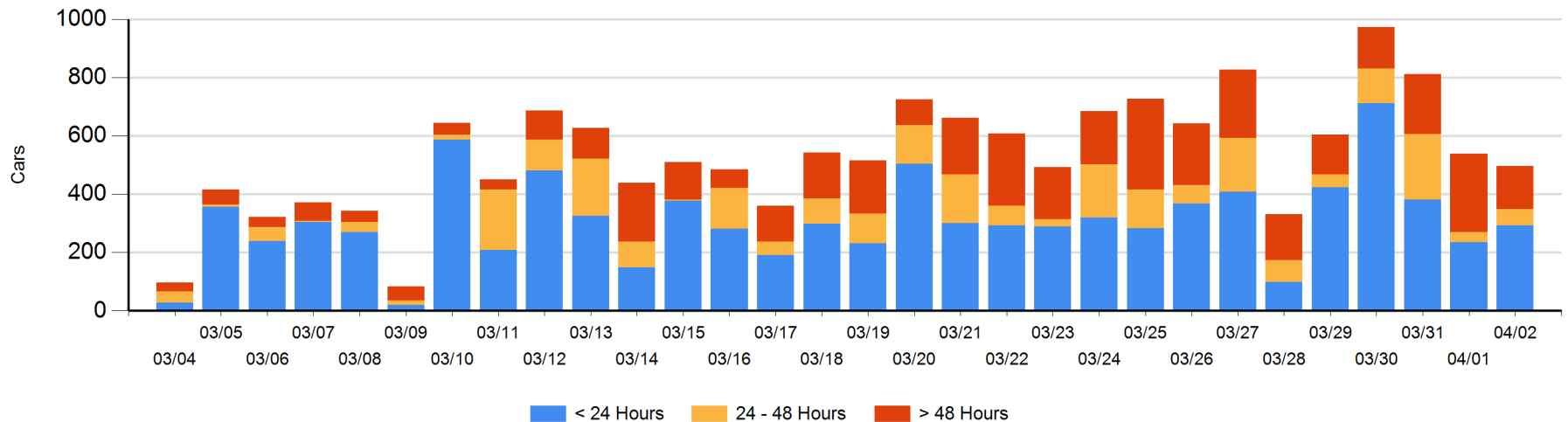
Today

	< 24 Hrs	24 - 48 Hrs	> 48-72 Hrs	> 72 Hrs	Total On Hand
CN	65	23		32	120
CP	228	32	3	114	377
SRY					0

Change in Last 24 Hours

	< 24 Hrs	24-48 Hrs	48 - 72 Hrs	> 72 Hrs
CN	-45	23	-37	5
CP	102	-2	-57	-31
SRY				

Loaded Cars on Hand Vancouver Waiting for Placement - Last 30 Days All Railways



Port Terminal Status

Prince Rupert

Daily Activity for 4/2/2019

	Cars Arrived	Cars Received in Interchange	Cars Delivered in Interchange	Cars Placed for Unloading	Loads on Wheels at Destination As of 4/2/2019
CN	254			255	273

Port Unloads

	04/02	04/01	Week To Date	Last Week
CN	188	255	443	995

Age Profile of Loaded Cars Waiting Placement for Unloading

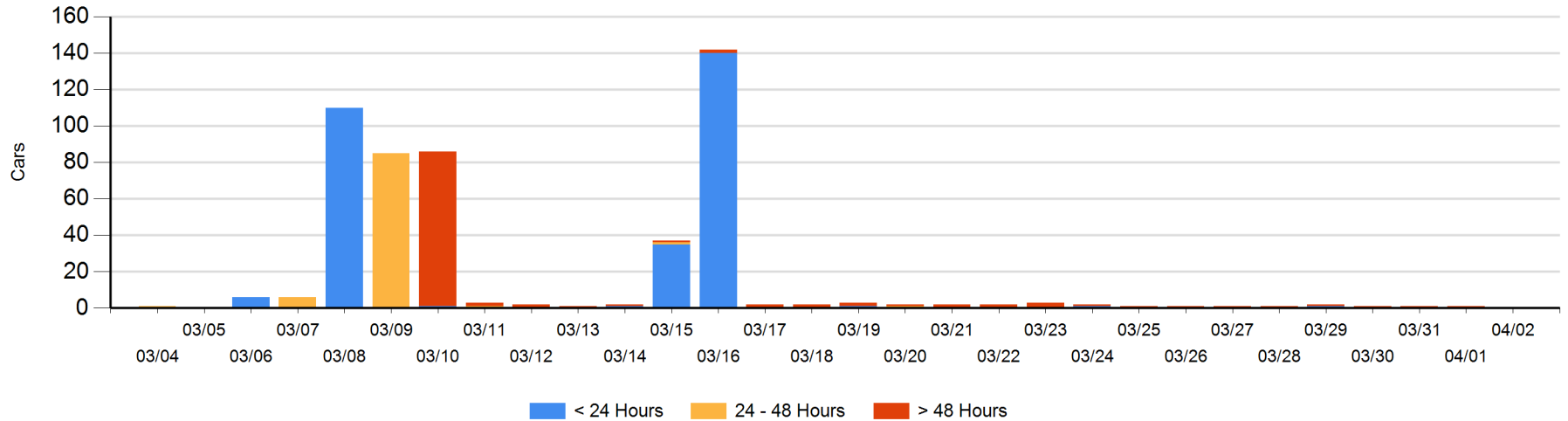
Today

	< 24 Hrs	24 - 48 Hrs	> 48-72 Hrs	> 72 Hrs	Total On Hand
CN					0

Change in Last 24 Hours

	< 24 Hrs	24-48 Hrs	48 - 72 Hrs	> 72 Hrs
CN				-1

Loaded Cars on Hand Prince Rupert Waiting for Placement - Last 30 Days All Railways



Port Terminal Status

Thunder Bay

Daily Activity for 4/2/2019

	Cars Arrived	Cars Received in Interchange	Cars Delivered in Interchange	Cars Placed for Unloading	Loads on Wheels at Destination As of 4/2/2019
CN					42
CP				133	70

Port Unloads

	04/02	04/01	Week To Date	Last Week
CN	55	93	148	59
CP	91	90	181	296

Age Profile of Loaded Cars Waiting Placement for Unloading

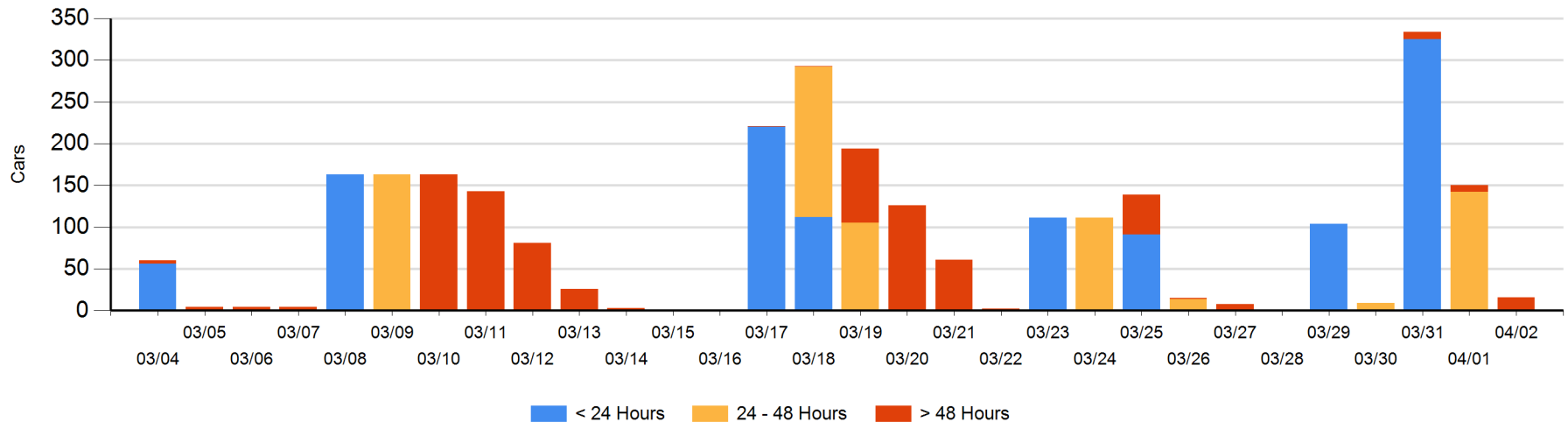
Today

	< 24 Hrs	24 - 48 Hrs	> 48-72 Hrs	> 72 Hrs	Total On Hand
CN					0
CP			16		16

Change in Last 24 Hours

	< 24 Hrs	24-48 Hrs	48 - 72 Hrs	> 72 Hrs
CN				
CP		-142	16	-8

Loaded Cars on Hand Thunder Bay Waiting for Placement - Last 30 Days All Railways



Measurement Definitions

Loads on Wheels	<p>Count of loaded rail cars including all rail cars that have been released loaded at origin and have not been reported by the railway as unloaded at destination.</p> <p>Counts include all rail cars (hopper cars and boxcars) moving within a pipeline.</p>
Loads Not Moving	<p>Loaded rail cars for which the railways have not reported a movement event for 48 hours or more whether the rail car is at origin, enroute or at destination.</p>
Port Unloads	<p>Count of rail cars reported by railways as unloaded at the western port destinations of Vancouver, Prince Rupert and Thunder Bay.</p> <p>Unload counts include all rail cars (hopper cars and boxcars) unloaded by all receivers including major port terminals, transloaders and other receivers.</p>
Cars Arrived	<p>Count of rail cars reported as arrived at the destination railway terminal.</p>
Cars Received in Interchange	<p>Count of rail cars received in interchange by each railway within a destination railway terminal. Interchange activity is tracked for the Vancouver and Thunder Bay pipelines as applicable.</p>
Cars Delivered in Interchange	<p>Count of rail cars delivered in interchange by each railway within a destination railway terminal. Interchange activity is tracked for the Vancouver and Thunder Bay pipelines as applicable.</p>
Cars Placed for Unloading	<p>Count of rail cars reported by the railways as placed loaded at the receiver's facility for unloading.</p>
Loads on Wheels at Destination	<p>Count of rail cars that remain under load within the destination railway terminal including rail cars that have been reported as placed for unloading but not yet reported as unloaded.</p>
Waiting Placement for Unloading	<p>Count of rail cars that have been reported as arrived at the destination railway terminal but not reported as placed for unloading by the railway.</p> <p>For the Ports of Vancouver, Prince Rupert and Thunder Bay the count of rail cars waiting placement for unloading is categorized by age – i.e. the elapsed time from arrival at destination to the current report date.</p>