

SPEED READ

- Loads on wheels decreased overnight, marking a decline in both CN and CP volumes. On a net basis, volumes decreased due to lower traffic across all corridors other than Prince Rupert.
- Network fluidity deteriorated overnight, led by a rise in idle car counts on both CN and CP by 24% (+142) and 166% (+461), respectively. The total count of cars for 4+ days on both railways increased 30% (+98) overnight - presently at 421 cars.
- Week 36 unloads ended ahead of prior week's performance by more than 950 unloads, reflecting improved week over week performance across all three major ports - Vancouver, Thunder Bay and Prince Rupert.

Loads on Wheels

- Loads on wheels fell 3% (-299) overnight, due to lower traffic on both CN and CP - combined total at 10,348 and 1% above the trailing 30-day average.
- On a net basis, the decline in loads on wheels reflects lower traffic across all corridors other than Prince Rupert.
- CN volumes declined 3% (-165) overnight, with lower traffic in the Vancouver, Thunder Bay and USA/MEX corridors offset by higher traffic in the E. Canada and Prince Rupert corridors. System wide CN loads on wheels presently at 5,678 and 1% below the trailing 30-day average.
- CP volumes decreased 3% (-143) overnight, driven by a decline in traffic across all corridors - Vancouver, Thunder Bay, USA/MEX and E. Canada. CP system wide loads on wheels presently at 4,401 and 4% above the trailing 30-day average.
- Vancouver now at 6,395, fell 3% (-184) overnight, now 8% above the trailing 30-day average.
- The Prince Rupert pipeline presently at 1,222, increased marginally by 1% (+8) overnight, and 23% below the trailing 30-day average.
- Thunder Bay volumes declined 8% (-83) overnight - now at 971 and 108% above the trailing 30-day average, with 70% of traffic moving on CP.

Hopper Car Rationing

- CN rationed 1,314 hopper cars in week 35.

Loads Not Moving

- **The count of cars not moving for 48+ hours increased significantly by 70% (+603) overnight, reflecting higher counts on both CN and CP. Idle car counts currently at 1,462 and 37% below the trailing 30-day average.**
- CN
 - **The count of idle cars for 48+ hours increased 24% (+142) overnight - presently at 724 cars.**
 - The number of cars idle for 4+ days increased 43% (+84) overnight - presently at 281 cars.
 - The count of cars not moving for 7+ days decreased 8% (-3) overnight - now at 34 cars.
 - Vancouver represents 67% of all idle cars.
 - In total 50% of all idle cars are dwelling at origin locations.
- CP
 - **CP idle car counts for 48+ hours increased significantly by 166% (+461) overnight - currently at 738 cars.**
 - The number of cars idle for 4+ days gained 11% (+14) overnight - now at 140 cars.
 - The number of cars idle for 7+ days gained 7% (+5) overnight - now at 74 cars.
 - Vancouver accounts for 65% of all idle cars.
 - In total 40% of all idle cars are dwelling at origin locations.

Port Performance

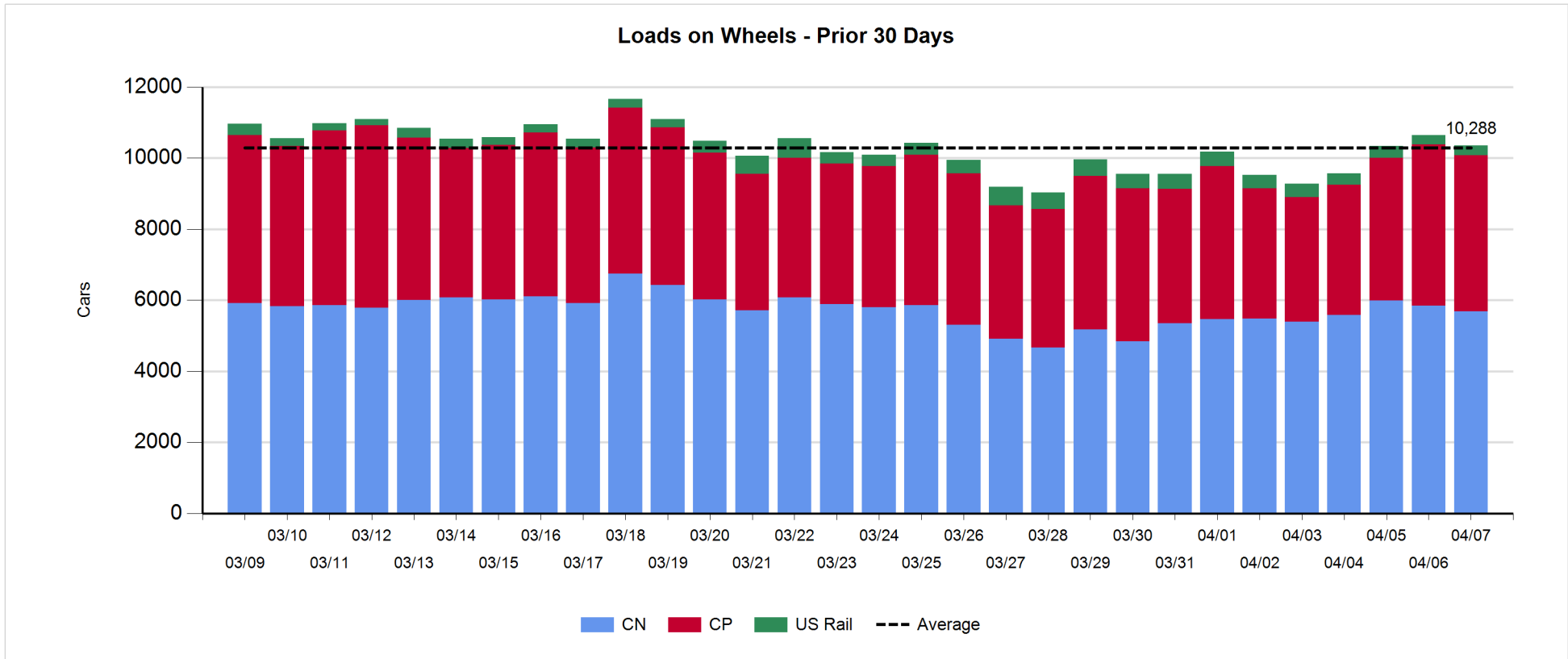
- CN and CP reported a total of 1,180 cars unloaded at the three major ports, now 26% above the trailing 30-day average. Week 36 unloads ended ahead of last week's pace by more than 950 unloads, reflecting higher unloads across all three major ports - Vancouver, Thunder Bay and Prince Rupert.
- Vancouver
 - 857 unloads reported by CN and CP at the Port of Vancouver; CN - 359 and CP - 498. Week 36 unloads concluded ahead of last week's performance by 100 unloads.
 - There are more than 1,000 cars on site at Vancouver with 600 cars arriving at the port in the last 24 hours.
 - CN and CP have less than 1,750 cars in British Columbia en route to Vancouver, with more than 750 cars at Kamloops and west, and 53% of traffic moving on CP.
- Prince Rupert
 - Prince Rupert reported 239 unloads, finished ahead of last week's unloads by less than 550 unloads.
 - Loads on wheels now above 1,000 cars - presently at 1,222 cars.
 - There are 450 cars west of Jasper en route to Prince Rupert.
 - There are less than 100 cars on site at Prince Rupert with more than 100 cars arriving at the port in the last 24 hours.
- Thunder Bay
 - 84 unloads were reported at Thunder Bay yesterday. Week 36 unloads concluded ahead of last week's pace by less than 350 unloads.
 - There are more than 550 cars on site at Thunder Bay with 500 cars arriving at the port in the prior 24 hours.
 - There are more than 100 cars en route to Thunder Bay from Winnipeg and east.

Daily Loads on Wheels - 4/7/2019

	E Canada	Prince Rupert	Thunder Bay	USA/MEX	Vancouver	Total
CN	651	1,222	292	372	3,141	5,678
CP	294		679	195	3,233	4,401
Short Line	3				21	24
US Rail				245		245
	948	1,222	971	812	6,395	10,348

Change in Loads on Wheels - Prior 24 Hours

	E Canada	Prince Rupert	Thunder Bay	USA/MEX	Vancouver	Total
CN	20	8	-81	-9	-103	-165
CP	-57		-2	-1	-83	-143
Short Line	0				2	2
US Rail				7		7
	-37	8	-83	-3	-184	-299

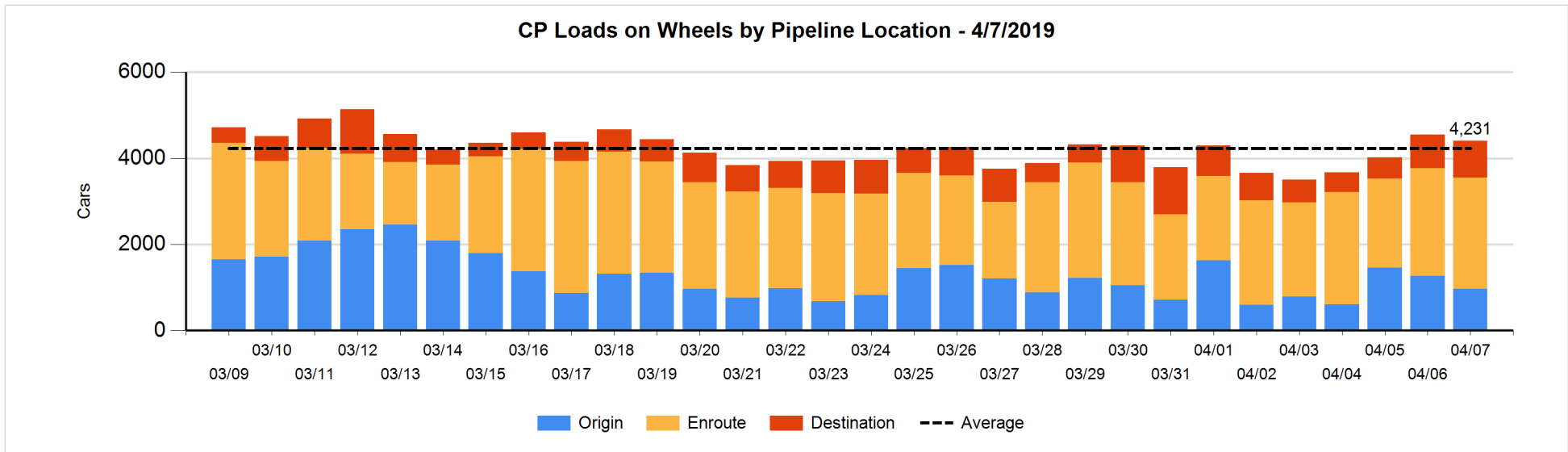
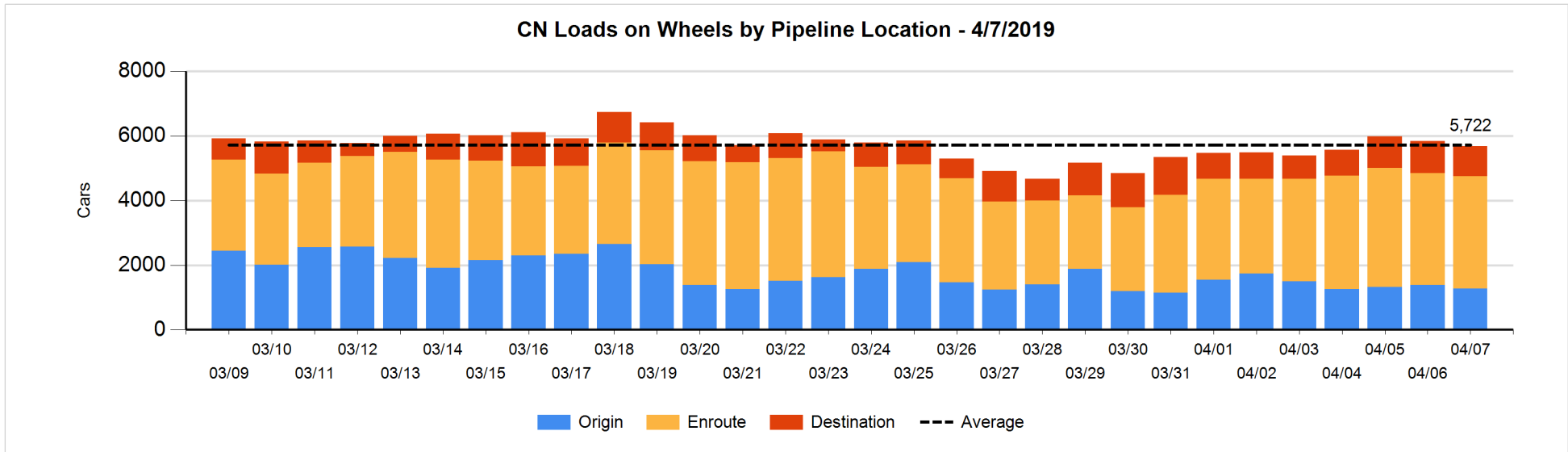


Daily Loads on Wheels By Pipeline Location - 4/7/2019

	E Canada	Prince Rupert	Thunder Bay	USA/MEX	Vancouver	Total
CN						
Origin	75	303		101	800	1,279
Enroute	472	836	1	261	1,906	3,476
Destination	104	83	291	10	435	923
	651	1,222	292	372	3,141	5,678
CP						
Origin	91		56	45	773	965
Enroute	201		345	133	1,901	2,580
Destination	2		278	17	559	856
	294		679	195	3,233	4,401
US Rail / Short Line						
Origin						
Enroute	2			148		150
Destination	1			97	21	119
	3			245	21	269

Change in Daily Loads on Wheels By Pipeline Location - Prior 24 Hours

	E Canada	Prince Rupert	Thunder Bay	USA/MEX	Vancouver	Total
CN						
Origin	-35	-209		0	141	-103
Enroute	93	330	-247	-9	-152	15
Destination	-38	-113	166	0	-92	-77
	20	8	-81	-9	-103	-165
CP						
Origin	-3		-120	-8	-167	-298
Enroute	-56		-141	23	252	78
Destination	2		259	-16	-168	77
	-57		-2	-1	-83	-143
US Rail / Short Line						
Origin						
Enroute	0			1		1
Destination	0			6	2	8
	0			7	2	9

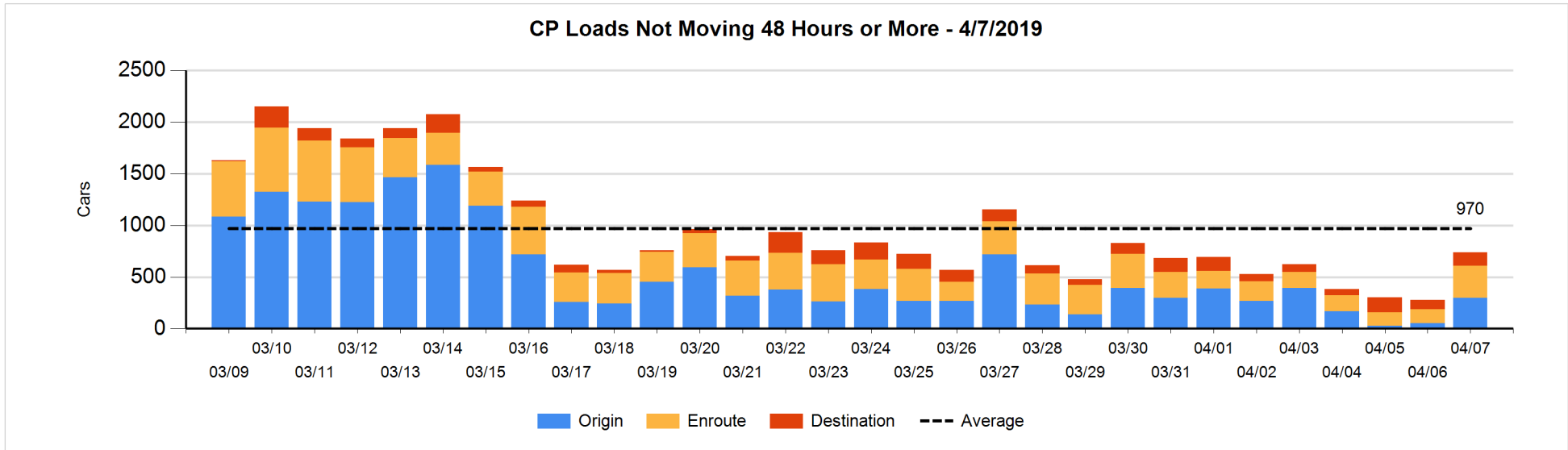
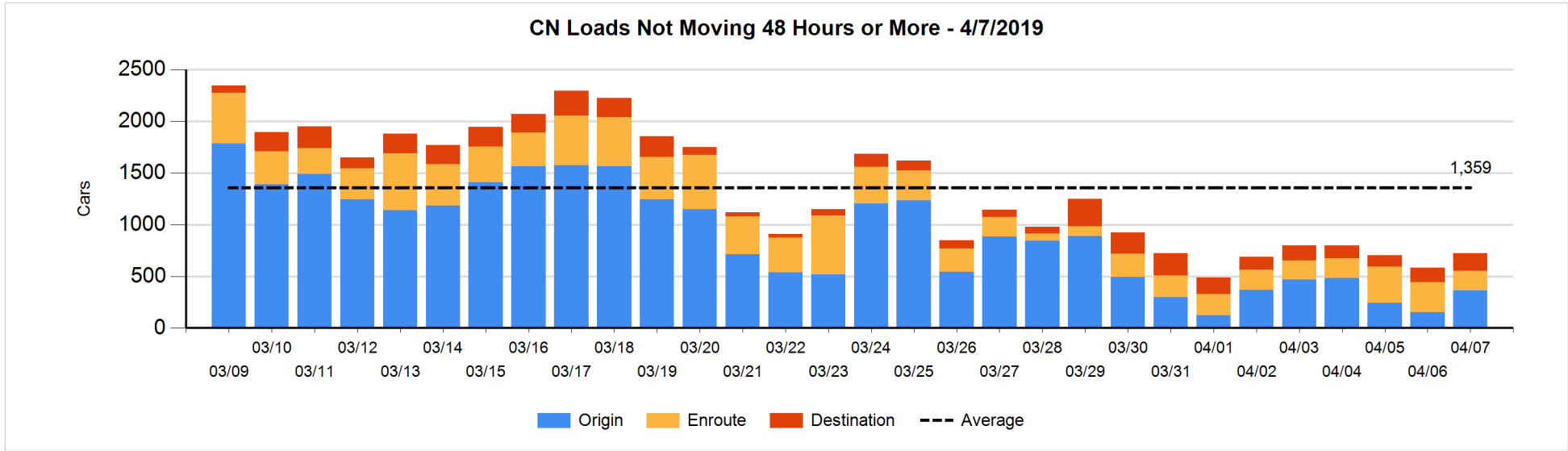


Loads Not Moving 48 Hours or More - 4/7/2019

	E Canada	Prince Rupert	Thunder Bay	USA/MEX	Vancouver	Total
CN						
Origin				95	267	362
Enroute	28	9	1	21	133	192
Destination	41	2	34	8	85	170
	69	11	35	124	485	724
CP						
Origin	91		4	29	172	296
Enroute	64			41	208	313
Destination			16	15	98	129
	155		20	85	478	738
US Rail / Short Line						
Origin						
Enroute	2			61		63
Destination	1			64	15	80
	3			125	15	143

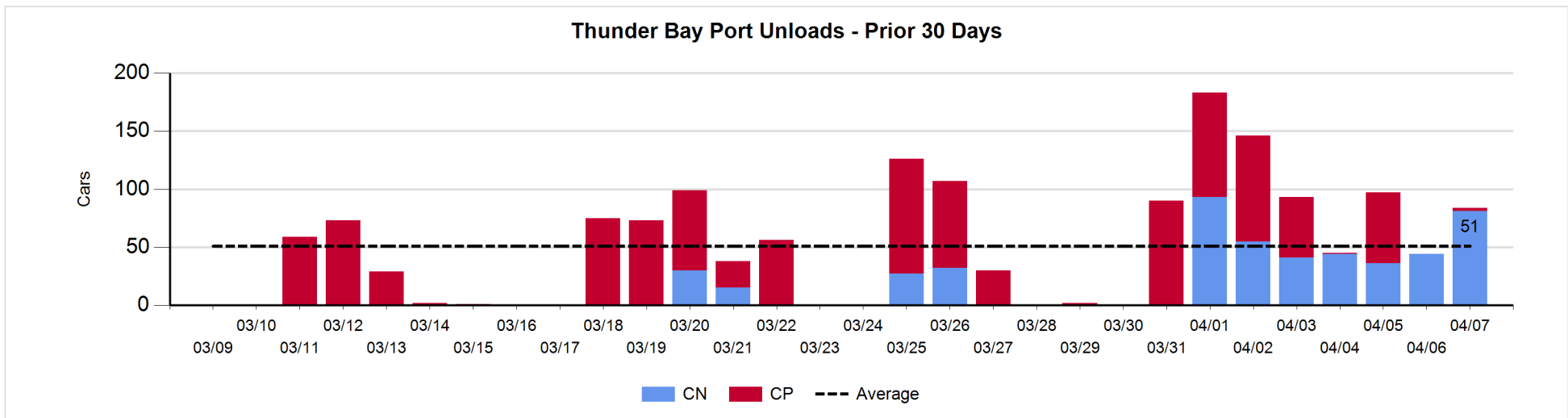
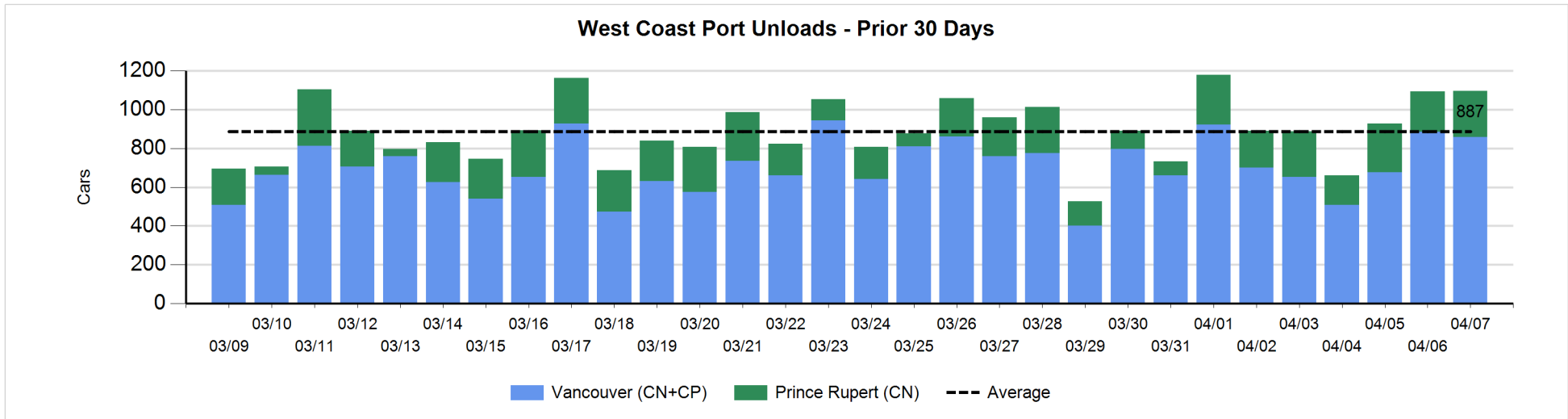
Change in Loads Not Moving 48 Hours or More - 4/7/2019

	E Canada	Prince Rupert	Thunder Bay	USA/MEX	Vancouver	Total
CN						
Origin				0	209	209
Enroute	14	-7	1	2	-109	-99
Destination	-30	-2	33	0	31	32
	-16	-9	34	2	131	142
CP						
Origin	84		-4	1	162	243
Enroute	52			28	101	181
Destination			10	-14	41	37
	136		6	15	304	461
US Rail / Short Line						
Origin						
Enroute	0			25		25
Destination	1			20	-1	20
	1			45	-1	45



Port Unloads - 4/7/2019

	Prince Rupert	Vancouver	West Coast Total	Thunder Bay	Total
CN	239	359	598	81	679
CP		498	498	3	501
	239	857	1,096	84	1,180



Port Terminal Status

Vancouver

Daily Activity for 4/7/2019

	Cars Arrived	Cars Received in Interchange	Cars Delivered in Interchange	Cars Placed for Unloading	Loads on Wheels at Destination As of 4/7/2019
CN	139	129	275	479	435
CP	461	275	132	433	559
SRY		3		2	21

Port Unloads

	04/07	04/06	Week To Date	Last Week
CN	359	549	2,335	2,124
CP	498	336	2,867	2,937
SRY	1	12	59	101

Age Profile of Loaded Cars Waiting Placement for Unloading

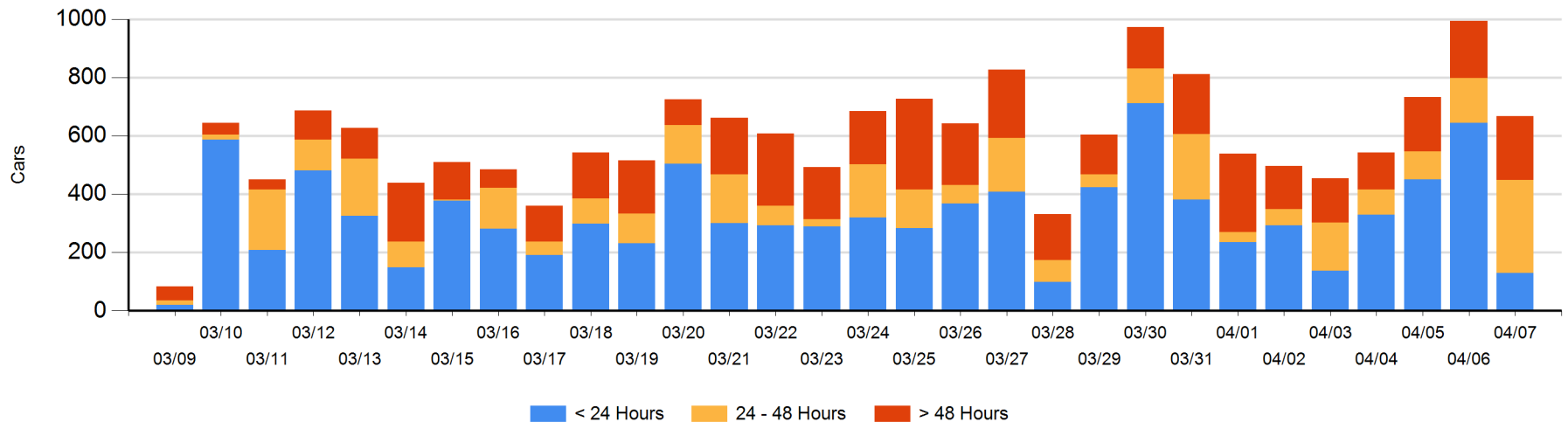
Today

	< 24 Hrs	24 - 48 Hrs	> 48-72 Hrs	> 72 Hrs	Total On Hand
CN	36	153	37	25	251
CP	93	167	29	128	417
SRY					0

Change in Last 24 Hours

	< 24 Hrs	24-48 Hrs	48 - 72 Hrs	> 72 Hrs
CN	-244	28	28	5
CP	-272	138	-1	-8
SRY				

Loaded Cars on Hand Vancouver Waiting for Placement - Last 30 Days All Railways



Port Terminal Status

Prince Rupert

Daily Activity for 4/7/2019

	Cars Arrived	Cars Received in Interchange	Cars Delivered in Interchange	Cars Placed for Unloading	Loads on Wheels at Destination As of 4/7/2019
CN	125			125	83

Port Unloads

	04/07	04/06	Week To Date	Last Week
CN	239	207	1,529	995

Age Profile of Loaded Cars Waiting Placement for Unloading

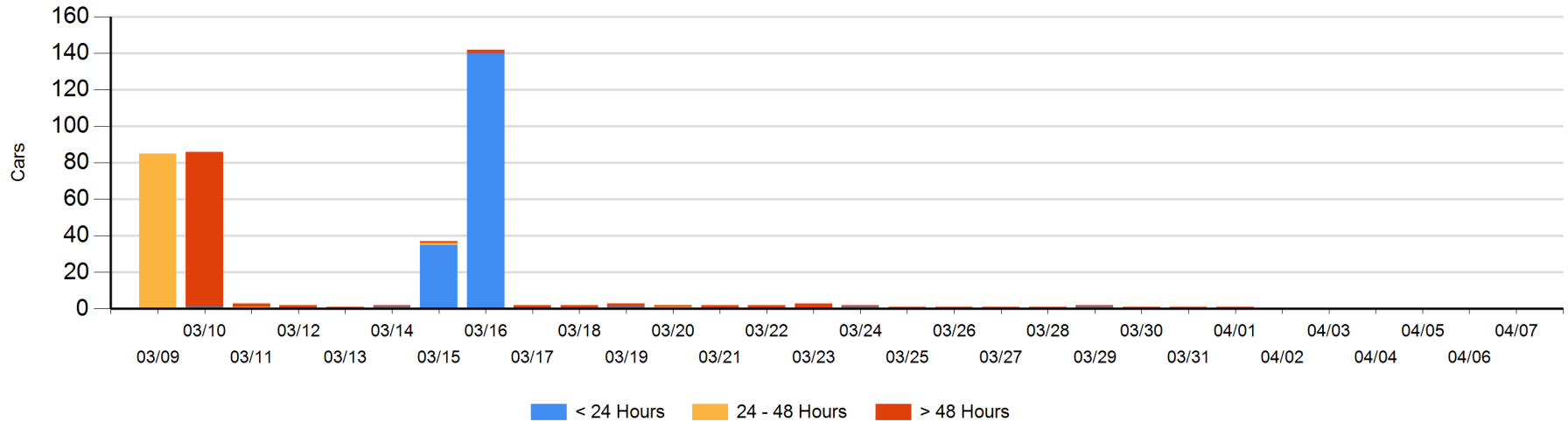
Today

	< 24 Hrs	24 - 48 Hrs	> 48-72 Hrs	> 72 Hrs	Total On Hand
CN					0

Change in Last 24 Hours

	< 24 Hrs	24-48 Hrs	48 - 72 Hrs	> 72 Hrs
CN				

Loaded Cars on Hand Prince Rupert Waiting for Placement - Last 30 Days All Railways



Port Terminal Status

Thunder Bay

Daily Activity for 4/7/2019

	Cars Arrived	Cars Received in Interchange	Cars Delivered in Interchange	Cars Placed for Unloading	Loads on Wheels at Destination As of 4/7/2019
CN	247			145	291
CP	261				278

Port Unloads

	04/07	04/06	Week To Date	Last Week
CN	81	44	394	59
CP	3		298	296

Age Profile of Loaded Cars Waiting Placement for Unloading

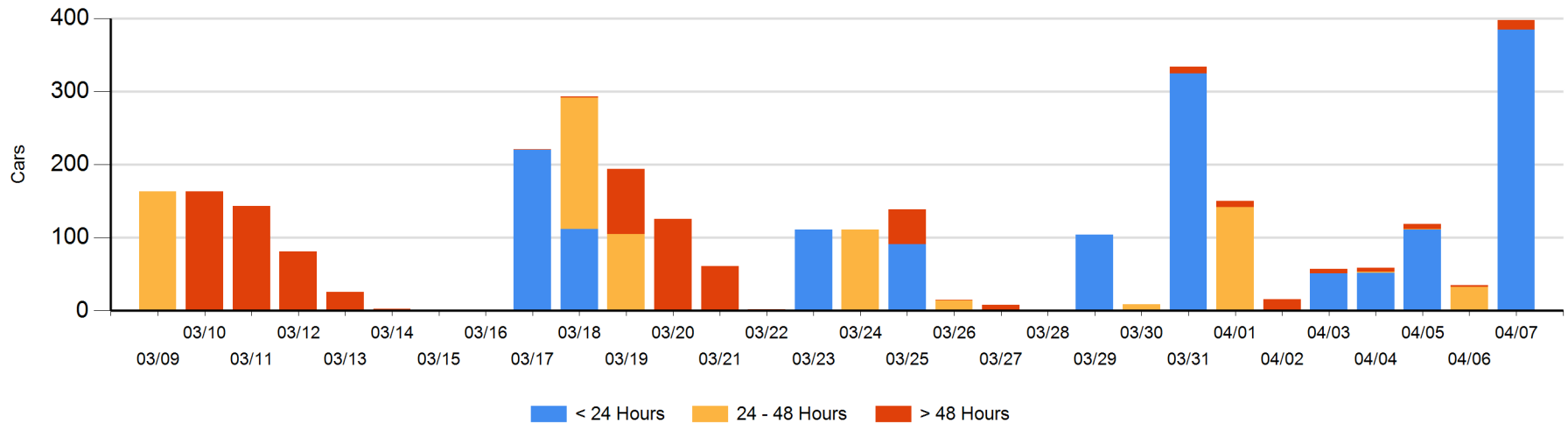
Today

	< 24 Hrs	24 - 48 Hrs	> 48-72 Hrs	> 72 Hrs	Total On Hand
CN	124			1	125
CP	261		11	1	273

Change in Last 24 Hours

	< 24 Hrs	24-48 Hrs	48 - 72 Hrs	> 72 Hrs
CN	124	-22	-1	1
CP	261	-11	11	0

Loaded Cars on Hand Thunder Bay Waiting for Placement - Last 30 Days All Railways



Measurement Definitions

Loads on Wheels	<p>Count of loaded rail cars including all rail cars that have been released loaded at origin and have not been reported by the railway as unloaded at destination.</p> <p>Counts include all rail cars (hopper cars and boxcars) moving within a pipeline.</p>
Loads Not Moving	<p>Loaded rail cars for which the railways have not reported a movement event for 48 hours or more whether the rail car is at origin, enroute or at destination.</p>
Port Unloads	<p>Count of rail cars reported by railways as unloaded at the western port destinations of Vancouver, Prince Rupert and Thunder Bay.</p> <p>Unload counts include all rail cars (hopper cars and boxcars) unloaded by all receivers including major port terminals, transloaders and other receivers.</p>
Cars Arrived	<p>Count of rail cars reported as arrived at the destination railway terminal.</p>
Cars Received in Interchange	<p>Count of rail cars received in interchange by each railway within a destination railway terminal. Interchange activity is tracked for the Vancouver and Thunder Bay pipelines as applicable.</p>
Cars Delivered in Interchange	<p>Count of rail cars delivered in interchange by each railway within a destination railway terminal. Interchange activity is tracked for the Vancouver and Thunder Bay pipelines as applicable.</p>
Cars Placed for Unloading	<p>Count of rail cars reported by the railways as placed loaded at the receiver's facility for unloading.</p>
Loads on Wheels at Destination	<p>Count of rail cars that remain under load within the destination railway terminal including rail cars that have been reported as placed for unloading but not yet reported as unloaded.</p>
Waiting Placement for Unloading	<p>Count of rail cars that have been reported as arrived at the destination railway terminal but not reported as placed for unloading by the railway.</p> <p>For the Ports of Vancouver, Prince Rupert and Thunder Bay the count of rail cars waiting placement for unloading is categorized by age – i.e. the elapsed time from arrival at destination to the current report date.</p>