

SPEED READ

- Loads on wheels decreased overnight, reflecting a decline in both CN and CP volumes. On a net basis, volumes decreased due to lower traffic across all corridors other than Vancouver.
- Network fluidity deteriorated overnight, led by a rise in idle car counts on both CN and CP by 18% (+110) and 10% (+73), respectively. The total count of cars for 4+ days on both railways gained 28% (+109) overnight - presently at 501 cars.
- Two days in Week 37 unloads now behind prior week's performance by more than 150 unloads, reflecting lower unloads at Vancouver and Prince Rupert offset by improved week over week performance at Thunder Bay.

Loads on Wheels

- Loads on wheels decreased 4% (-418) overnight, due to reduced traffic on both CN and CP - combined total at 11,375 and 10% above the trailing 30-day average.
- On a net basis, the decline in loads on wheels reflects lower traffic across all corridors other than Vancouver.
- CN volumes fell 3% (-170) overnight, with lower traffic across all corridors - Thunder Bay, Prince Rupert, USA/MEX and E. Canada. System wide CN loads on wheels currently at 6,304 and 10% above the trailing 30-day average.
- CP volumes declined 3% (-149) overnight, driven by a decline in volumes in the Thunder Bay and E. Canada corridors offset by a rise in traffic in the Vancouver and USA/MEX corridors. CP system wide loads on wheels currently at 4,822 and 13% above the trailing 30-day average.
- Vancouver currently at 7,521, the highest seen in the last 30 days, increased marginally by 1% (+48) overnight, now 26% above the trailing 30-day average.
- The Prince Rupert pipeline currently at 1,537, fell 5% (-82) overnight, and 2% below the trailing 30-day average.
- Thunder Bay volumes declined significantly by 23% (-211) overnight and have now decreased for the third consecutive day - currently at 699 and 38% above the trailing 30-day average, with 71% of traffic moving on CP.

Hopper Car Rationing

- CN rationed 1,314 hopper cars in week 35.

Loads Not Moving

- **The count of cars not moving for 48+ hours increased 13% (+183) overnight, marking higher counts on both CN and CP. Idle car counts currently at 1,539 and 29% below the trailing 30-day average.**
- CN
 - **The count of idle cars for 48+ hours rose 18% (+110) overnight - presently at 705 cars.**
 - The number of cars idle for 4+ days declined significantly by 49% (-117) overnight - now at 120 cars, the lowest seen in the last 30 days.
 - The count of cars not moving for 7+ decreased significantly by 72% (-96) overnight - currently at 37 cars.
 - Vancouver represents 59% of all idle cars.
 - In total 44% of all idle cars are dwelling at origin locations.
- CP
 - **CP idle car counts for 48+ hours increased 10% (+73) overnight and have now increased for the third consecutive day - presently at 834 cars.**
 - The number of cars idle for 4+ days increased significantly by 146% (+226) overnight and have now increased for the third consecutive day -

presently at 381 cars.

- The number of cars idle for 7+ days decreased 12% (-8) overnight - currently at 61 cars, the lowest seen in the last 30 days.
- Vancouver accounts for 81% of all idle cars.
- In total 36% of all idle cars are dwelling at origin locations.

Port Performance

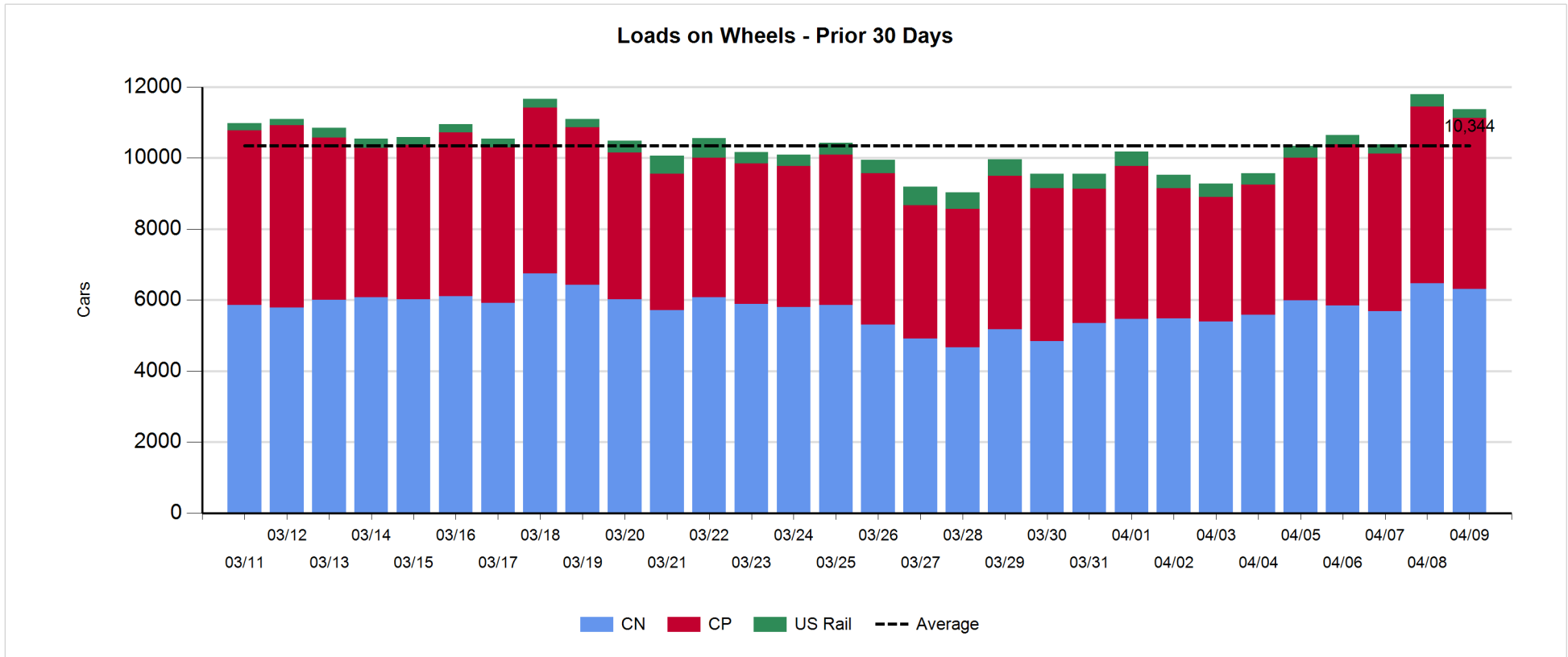
- CN and CP reported a total of 1,191 cars unloaded at the three major ports, now 23% above the trailing 30-day average. Two days in Week 37 unloads now behind last week's pace by more than 150 unloads, reflecting lower unloads at Vancouver and Prince Rupert offset by higher unloads at Thunder Bay.
- Vancouver
 - 761 unloads reported by CN and CP at the Port of Vancouver; CN - 233 and CP - 528. Two days in Week 37 unloads are tracking behind last week's performance by more than 300 unloads.
 - There are more than 1,150 cars on site at Vancouver with more than 850 cars arriving at the port in the last 24 hours.
 - CN and CP have 2,100 cars in British Columbia en route to Vancouver, with 750 cars at Kamloops and west, and 58% of traffic moving on CN.
- Prince Rupert
 - Prince Rupert reported 158 unloads, now behind last week's unloads after two days by 100 unloads.
 - Loads on wheels now above 1,000 cars - presently at 1,537 cars.
 - There are more than 500 cars west of Jasper en route to Prince Rupert.
 - There are zero cars on site at Prince Rupert with zero cars arriving at the port in the last 24 hours.
- Thunder Bay
 - 272 unloads were reported at Thunder Bay yesterday. Two days in Week 37 unloads are tracking ahead of last week's pace by 250 unloads.
 - There are about 350 cars on site at Thunder Bay with 9 cars arriving at the port in the prior 24 hours.
 - There are more than 150 cars en route to Thunder Bay from Winnipeg and east.

Daily Loads on Wheels - 4/9/2019

	E Canada	Prince Rupert	Thunder Bay	USA/MEX	Vancouver	Total
CN	674	1,537	200	259	3,634	6,304
CP	198		499	254	3,871	4,822
Short Line	2				16	18
US Rail				231		231
	874	1,537	699	744	7,521	11,375

Change in Loads on Wheels - Prior 24 Hours

	E Canada	Prince Rupert	Thunder Bay	USA/MEX	Vancouver	Total
CN	-40	-82	-36	-12	0	-170
CP	-52		-175	28	50	-149
Short Line	0				-2	-2
US Rail				-97		-97
	-92	-82	-211	-81	48	-418

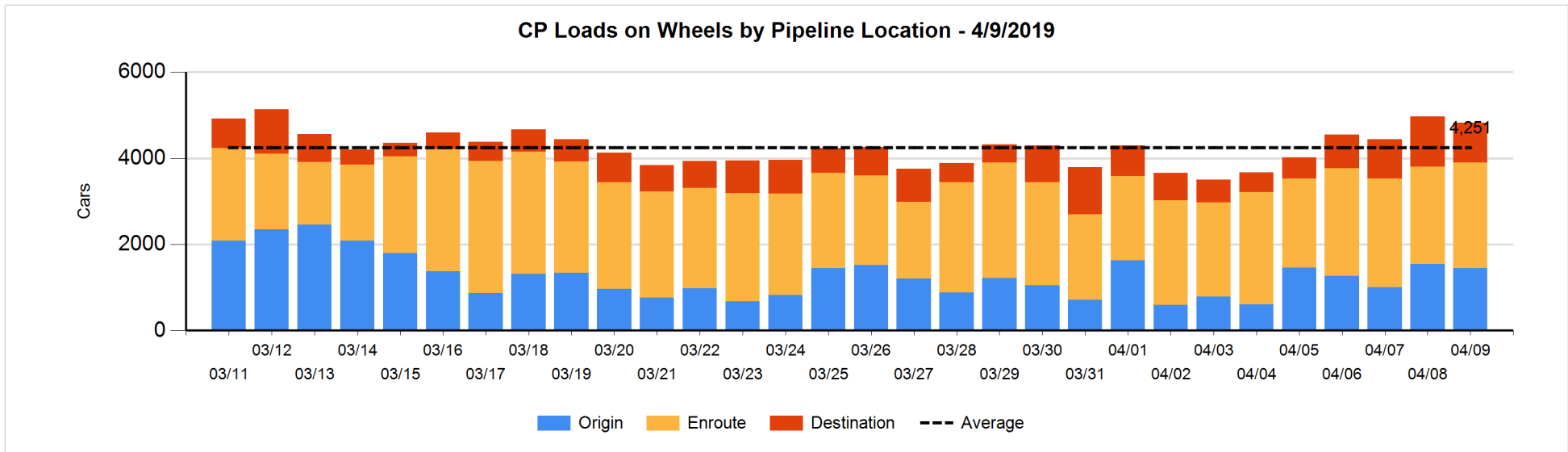
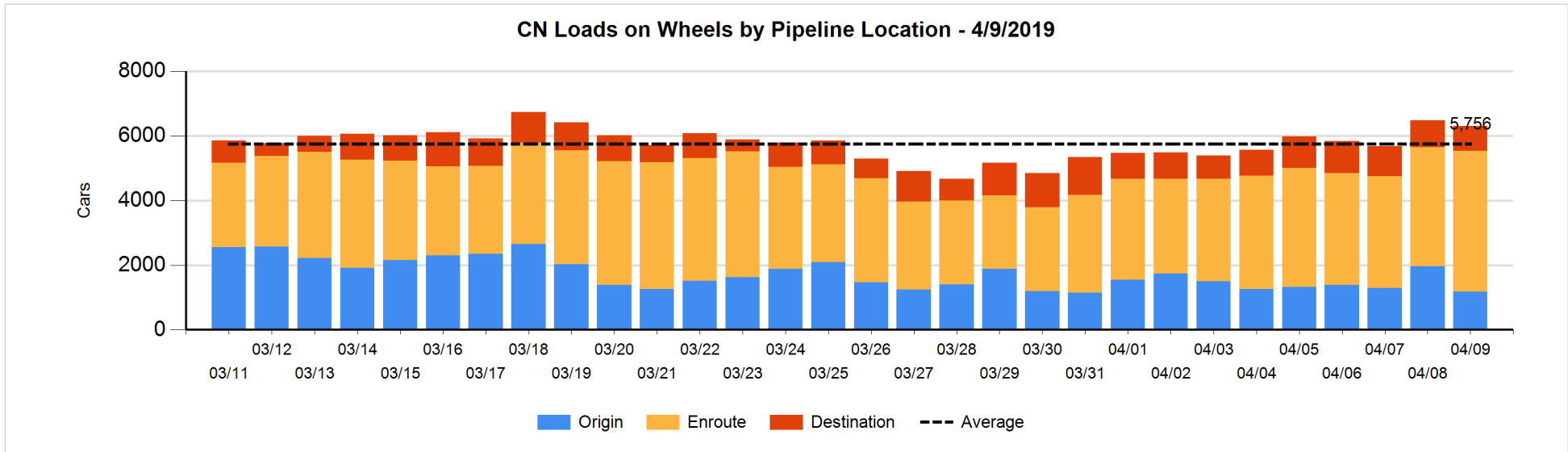


Daily Loads on Wheels By Pipeline Location - 4/9/2019

	E Canada	Prince Rupert	Thunder Bay	USA/MEX	Vancouver	Total
CN						
Origin	85	448	52	6	590	1,181
Enroute	522	1,089	99	235	2,413	4,358
Destination	67		49	18	631	765
	674	1,537	200	259	3,634	6,304
CP						
Origin	67		93	54	1,235	1,449
Enroute	76		118	146	2,112	2,452
Destination	55		288	54	524	921
	198		499	254	3,871	4,822
US Rail / Short Line						
Origin						
Enroute	2			110		112
Destination				121	16	137
	2			231	16	249

Change in Daily Loads on Wheels By Pipeline Location - Prior 24 Hours

	E Canada	Prince Rupert	Thunder Bay	USA/MEX	Vancouver	Total
CN						
Origin	-104	-234	-47	-99	-300	-784
Enroute	80	310	98	98	83	669
Destination	-16	-158	-87	-11	217	-55
	-40	-82	-36	-12	0	-170
CP						
Origin	-37		-95	-26	64	-94
Enroute	38		97	40	15	190
Destination	-53		-177	14	-29	-245
	-52		-175	28	50	-149
US Rail / Short Line						
Origin						
Enroute	0			-41		-41
Destination				-56	-2	-58
	0			-97	-2	-99

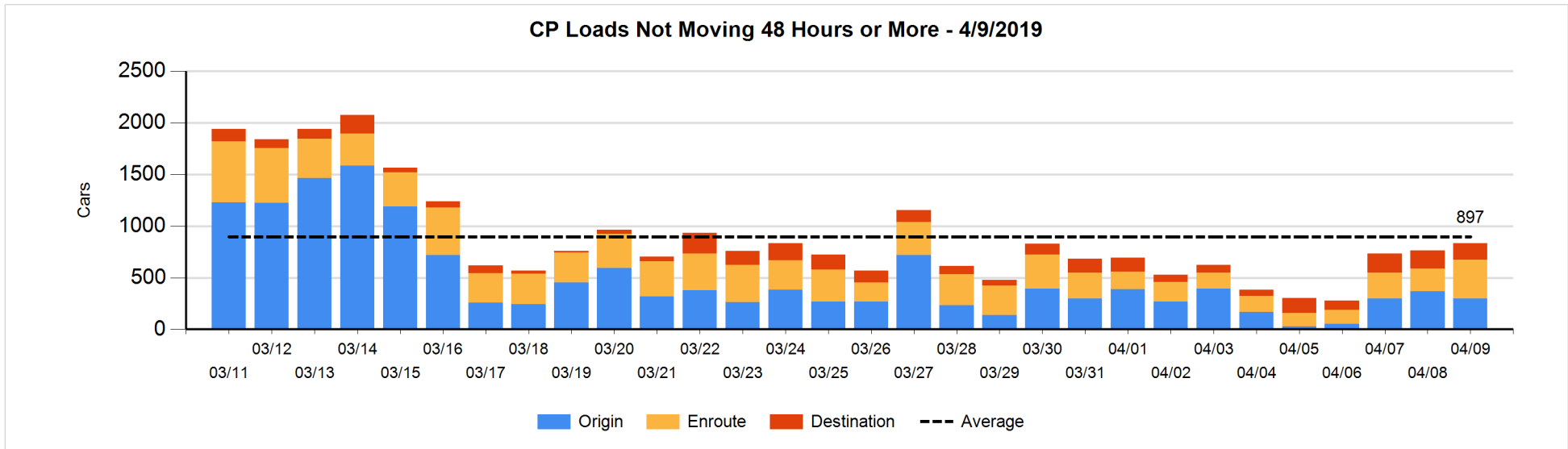
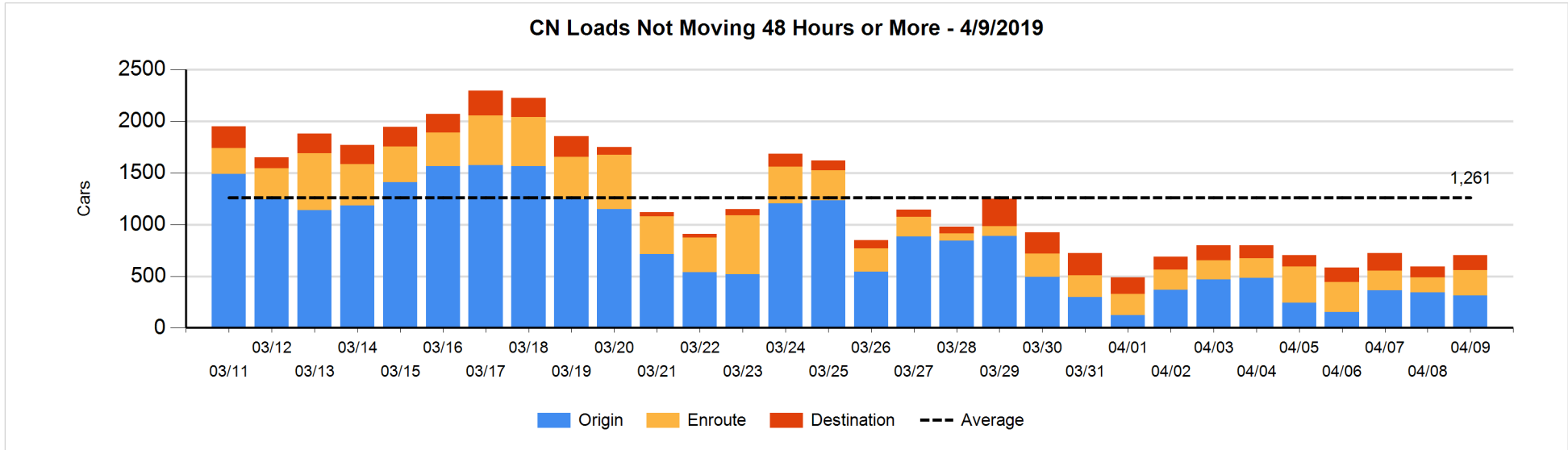


Loads Not Moving 48 Hours or More - 4/9/2019

	E Canada	Prince Rupert	Thunder Bay	USA/MEX	Vancouver	Total
CN						
Origin	69	91		3	149	312
Enroute	37	8		17	183	245
Destination	32		31	4	81	148
	138	99	31	24	413	705
CP						
Origin	55		52	4	187	298
Enroute	11		1	21	343	376
Destination			2	11	147	160
	66		55	36	677	834
US Rail / Short Line						
Origin						
Enroute	2			35		37
Destination				57	7	64
	2			92	7	101

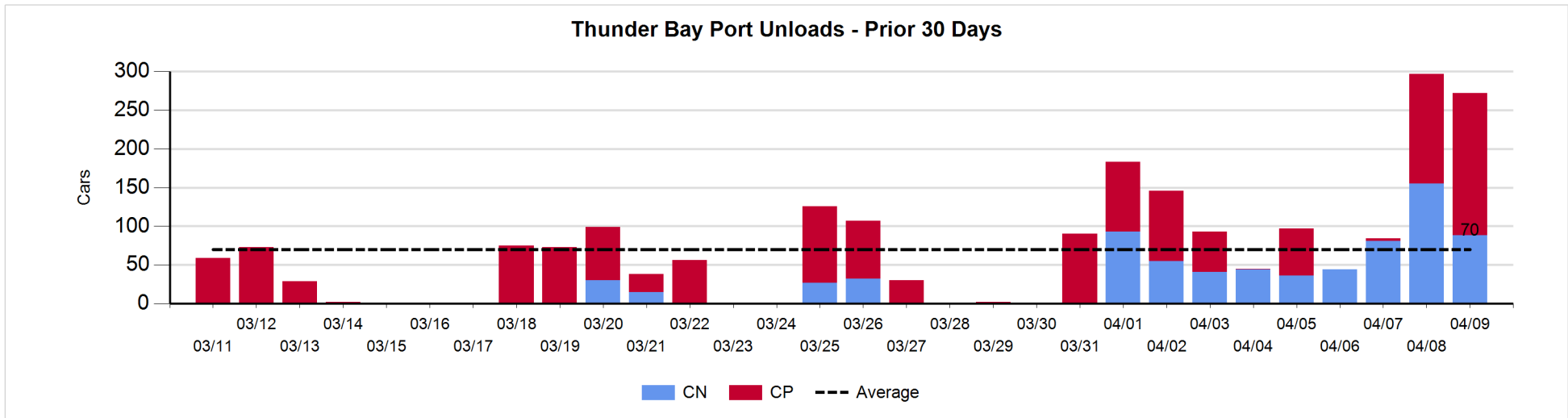
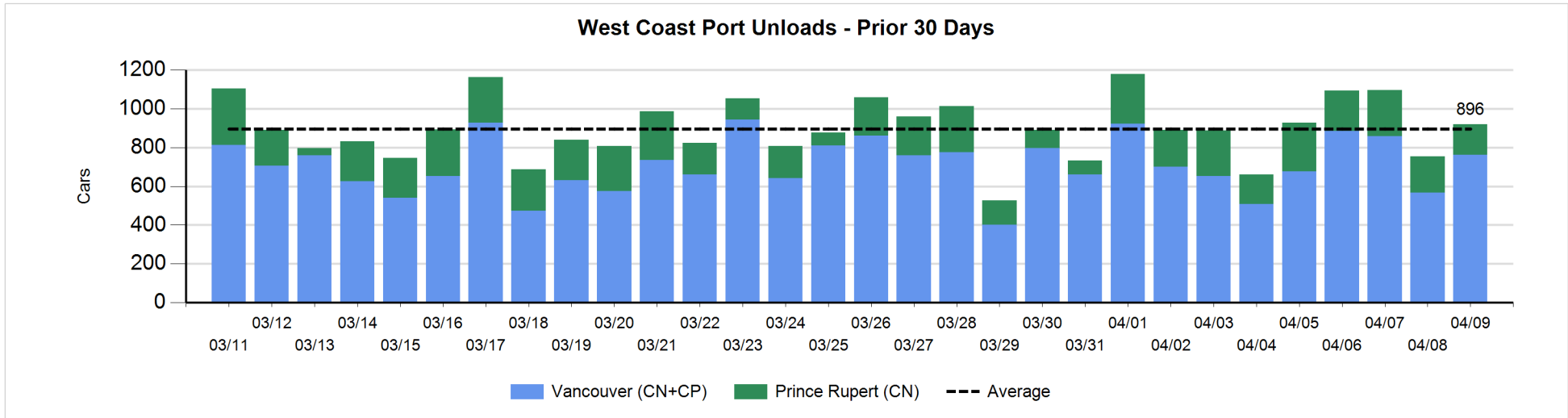
Change in Loads Not Moving 48 Hours or More - 4/9/2019

	E Canada	Prince Rupert	Thunder Bay	USA/MEX	Vancouver	Total
CN						
Origin	63	40		-95	-37	-29
Enroute	9	0		-2	90	97
Destination	-4		30	-2	18	42
	68	40	30	-99	71	110
CP						
Origin	-36		0	-26	-6	-68
Enroute	0		1	-31	185	155
Destination			0	-5	-9	-14
	-36		1	-62	170	73
US Rail / Short Line						
Origin						
Enroute	0			-8		-8
Destination				-2	-3	-5
	0			-10	-3	-13



Port Unloads - 4/9/2019

	Prince Rupert	Vancouver	West Coast Total	Thunder Bay	Total
CN	158	233	391	88	479
CP		528	528	184	712
	158	761	919	272	1,191



Port Terminal Status

Vancouver

Daily Activity for 4/9/2019

	Cars Arrived	Cars Received in Interchange	Cars Delivered in Interchange	Cars Placed for Unloading	Loads on Wheels at Destination As of 4/9/2019
CN	413	209	186	397	631
CP	462	186	211	323	524
SRY	1	2		12	16

Port Unloads

	04/09	04/08	Week To Date	Last Week
CN	233	240	473	2,335
CP	528	326	854	2,867
SRY	10	7	17	59

Age Profile of Loaded Cars Waiting Placement for Unloading

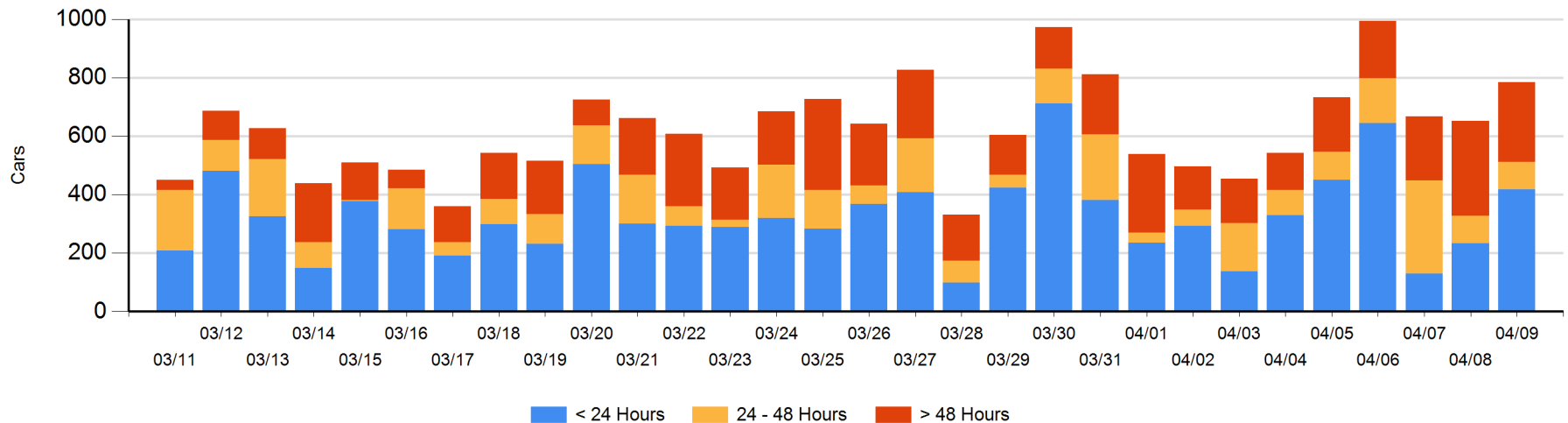
Today

	< 24 Hrs	24 - 48 Hrs	> 48-72 Hrs	> 72 Hrs	Total On Hand
CN	274	84	36	84	478
CP	143	11	39	113	306
SRY					0

Change in Last 24 Hours

	< 24 Hrs	24-48 Hrs	48 - 72 Hrs	> 72 Hrs
CN	155	31	-43	39
CP	29	-31	-34	-15
SRY				

Loaded Cars on Hand Vancouver Waiting for Placement - Last 30 Days All Railways



Port Terminal Status

Prince Rupert

Daily Activity for 4/9/2019

Cars Arrived	Cars Received in Interchange	Cars Delivered in Interchange	Cars Placed for Unloading	Loads on Wheels at Destination As of 4/9/2019
CN				

Port Unloads

	04/09	04/08	Week To Date	Last Week
CN	158	188	346	1,529

Age Profile of Loaded Cars Waiting Placement for Unloading

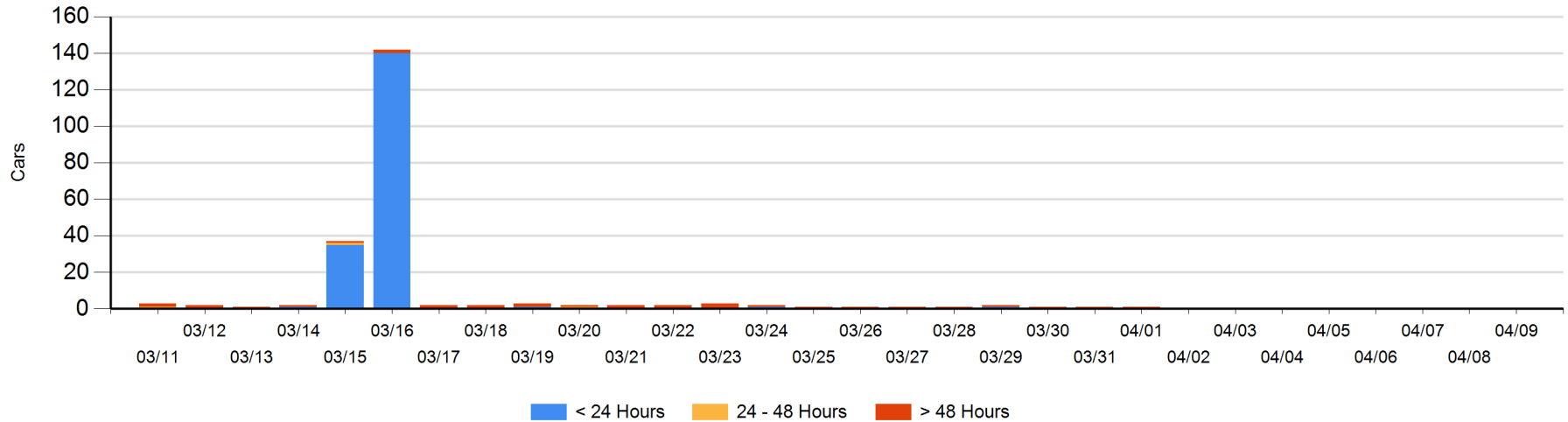
Today

< 24 Hrs	24 - 48 Hrs	> 48-72 Hrs	> 72 Hrs	Total On Hand
CN				0

Change in Last 24 Hours

< 24 Hrs	24-48 Hrs	48 - 72 Hrs	> 72 Hrs
CN			

Loaded Cars on Hand Prince Rupert Waiting for Placement - Last 30 Days All Railways



Port Terminal Status

Thunder Bay

Daily Activity for 4/9/2019

	Cars Arrived	Cars Received in Interchange	Cars Delivered in Interchange	Cars Placed for Unloading	Loads on Wheels at Destination As of 4/9/2019
CN	1			78	49
CP	8			262	288

Port Unloads

	04/09	04/08	Week To Date	Last Week
CN	88	155	243	394
CP	184	142	326	298

Age Profile of Loaded Cars Waiting Placement for Unloading

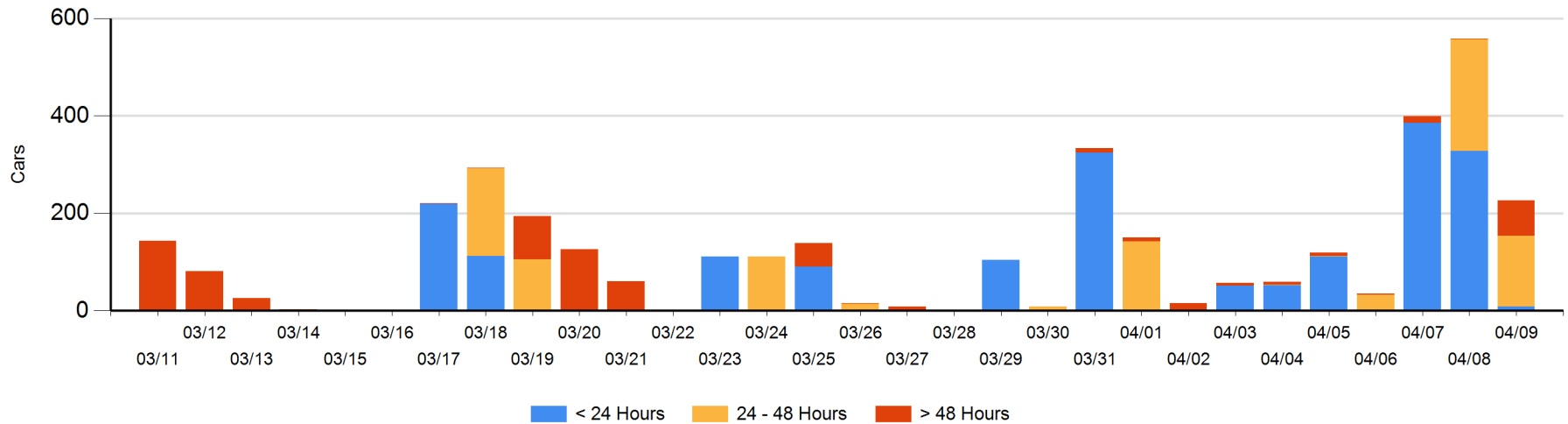
Today

	< 24 Hrs	24 - 48 Hrs	> 48-72 Hrs	> 72 Hrs	Total On Hand
CN	1		35		36
CP	8	145	37	1	191

Change in Last 24 Hours

	< 24 Hrs	24-48 Hrs	48 - 72 Hrs	> 72 Hrs
CN	1	-113	35	
CP	-320	28	37	0

Loaded Cars on Hand Thunder Bay Waiting for Placement - Last 30 Days All Railways



Measurement Definitions

Loads on Wheels	<p>Count of loaded rail cars including all rail cars that have been released loaded at origin and have not been reported by the railway as unloaded at destination.</p> <p>Counts include all rail cars (hopper cars and boxcars) moving within a pipeline.</p>
Loads Not Moving	<p>Loaded rail cars for which the railways have not reported a movement event for 48 hours or more whether the rail car is at origin, enroute or at destination.</p>
Port Unloads	<p>Count of rail cars reported by railways as unloaded at the western port destinations of Vancouver, Prince Rupert and Thunder Bay.</p> <p>Unload counts include all rail cars (hopper cars and boxcars) unloaded by all receivers including major port terminals, transloaders and other receivers.</p>
Cars Arrived	<p>Count of rail cars reported as arrived at the destination railway terminal.</p>
Cars Received in Interchange	<p>Count of rail cars received in interchange by each railway within a destination railway terminal. Interchange activity is tracked for the Vancouver and Thunder Bay pipelines as applicable.</p>
Cars Delivered in Interchange	<p>Count of rail cars delivered in interchange by each railway within a destination railway terminal. Interchange activity is tracked for the Vancouver and Thunder Bay pipelines as applicable.</p>
Cars Placed for Unloading	<p>Count of rail cars reported by the railways as placed loaded at the receiver's facility for unloading.</p>
Loads on Wheels at Destination	<p>Count of rail cars that remain under load within the destination railway terminal including rail cars that have been reported as placed for unloading but not yet reported as unloaded.</p>
Waiting Placement for Unloading	<p>Count of rail cars that have been reported as arrived at the destination railway terminal but not reported as placed for unloading by the railway.</p> <p>For the Ports of Vancouver, Prince Rupert and Thunder Bay the count of rail cars waiting placement for unloading is categorized by age – i.e. the elapsed time from arrival at destination to the current report date.</p>