

SPEED READ

- Loads on wheels fell overnight, reflecting a decline in both CN and CP volumes. On a net basis, volumes declined due to lower traffic across all corridors other than Thunder Bay.
- Network fluidity deteriorated overnight, led by a rise in idle car counts on CP by 38% (+321) offset by a decline in idle car counts on CN by 27% (-309). The total count of cars for 4+ days on both railways increased 18% (+95) overnight and have now increased for the third consecutive day - now at 631 cars.
- Four days in Week 37 unloads now ahead of prior week's performance by more than 350 unloads, marking improved week over week performance at Thunder Bay and Vancouver offset by reduced unloads at Prince Rupert.

Loads on Wheels

- Loads on wheels declined for the third consecutive day, down 3% (-336) overnight, due to reduced volumes on both CN and CP - combined total at 10,727 and 4% above the trailing 30-day average.
- On a net basis, the decline in loads on wheels reflects reduced traffic across all corridors other than Thunder Bay.
- CN volumes fell 4% (-271) overnight and have now decreased for the third consecutive day, with lower volumes in the Vancouver, E. Canada and Prince Rupert corridors offset by higher volumes in the Thunder Bay and USA/MEX corridors. System wide CN loads on wheels now at 5,834 and 1% above the trailing 30-day average.
- CP volumes decreased for the third consecutive day, down 1% (-55) overnight, driven by a decline in volumes across all corridors other than Thunder Bay. CP system wide loads on wheels now at 4,714 and 11% above the trailing 30-day average.
- Vancouver now at 6,974, fell 4% (-319) overnight, now 16% above the trailing 30-day average.
- The Prince Rupert pipeline now at 1,498, declined for the third consecutive day, down 2% (-35) overnight, and 4% below the trailing 30-day average.
- Thunder Bay volumes increased significantly by 19% (+144) overnight - now at 901 and 62% above the trailing 30-day average, with 59% of traffic moving on CP.

Hopper Car Rationing

- CN rationed 1,314 hopper cars in week 35.

Loads Not Moving

- **The count of cars not moving for 48+ hours increased for the third consecutive day, up 1% (+12) overnight, reflecting higher counts on CP offset by reduced counts on CN. Idle car counts currently at 1,993 and 2% below the trailing 30-day average.**
- CN
 - **The count of idle cars for 48+ hours declined 27% (-309) overnight - currently at 819 cars.**
 - The number of cars idle for 4+ days increased 22% (+40) overnight - now at 221 cars.
 - The count of cars not moving for 7+ days declined 16% (-9) overnight - currently at 48 cars.
 - Vancouver represents 58% of all idle cars.
 - In total 27% of all idle cars are dwelling at origin locations.
- CP
 - **CP idle car counts for 48+ hours increased for the fifth consecutive day, up 38% (+321) overnight - now at 1,174 cars.**
 - The number of cars idle for 4+ days increased for the fifth consecutive day, up 15% (+55) overnight - now at 410 cars.

- The number of cars idle for 7+ days increased 5% (+4) overnight - now at 84 cars.
- Vancouver accounts for 88% of all idle cars.
- In total 49% of all idle cars are dwelling at origin locations.

Port Performance

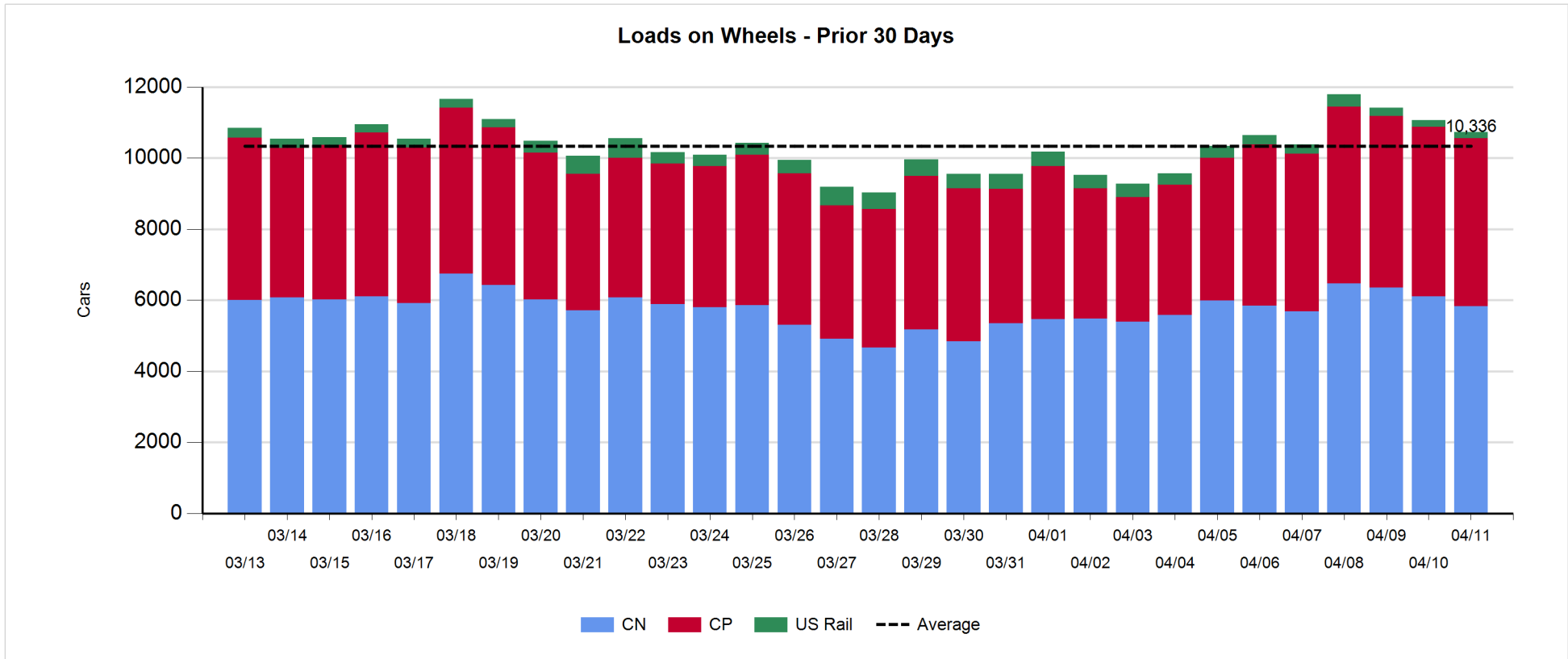
- CN and CP reported a total of 1,305 cars unloaded at the three major ports, now 35% above the trailing 30-day average. Four days in Week 37 unloads now ahead of last week's pace by more than 350 unloads, marking higher unloads at Thunder Bay and Vancouver offset by reduced unloads at Prince Rupert.
- Vancouver
 - 889 unloads reported by CN and CP at the Port of Vancouver; CN - 375 and CP - 514. Four days in Week 37 unloads are tracking ahead of last week's performance by more than 50 unloads.
 - There are more than 1,650 cars on site at Vancouver with 1,100 cars arriving at the port in the last 24 hours.
 - CN and CP have more than 2,200 cars in British Columbia en route to Vancouver, with more than 700 cars at Kamloops and west, and 52% of traffic moving on CP.
- Prince Rupert
 - Prince Rupert reported 242 unloads, now behind last week's unloads after four days by less than 200 unloads.
 - Loads on wheels now above 1,000 cars - currently at 1,498 cars.
 - There are more than 700 cars west of Jasper en route to Prince Rupert.
 - There are 150 cars on site at Prince Rupert with 200 cars arriving at the port in the last 24 hours.
- Thunder Bay
 - 174 unloads were reported at Thunder Bay yesterday. Four days in Week 37 unloads are tracking ahead of last week's pace by around 500 unloads.
 - There are more than 100 cars on site at Thunder Bay with zero cars arriving at the port in the prior 24 hours.
 - There are around 300 cars en route to Thunder Bay from Winnipeg and east.

Daily Loads on Wheels - 4/11/2019

	E Canada	Prince Rupert	Thunder Bay	USA/MEX	Vancouver	Total
CN	546	1,498	367	277	3,146	5,834
CP	149		534	215	3,816	4,714
Short Line	2				12	14
US Rail				165		165
	697	1,498	901	657	6,974	10,727

Change in Loads on Wheels - Prior 24 Hours

	E Canada	Prince Rupert	Thunder Bay	USA/MEX	Vancouver	Total
CN	-115	-35	52	17	-190	-271
CP	-7		92	-9	-131	-55
Short Line	0				2	2
US Rail				-12		-12
	-122	-35	144	-4	-319	-336

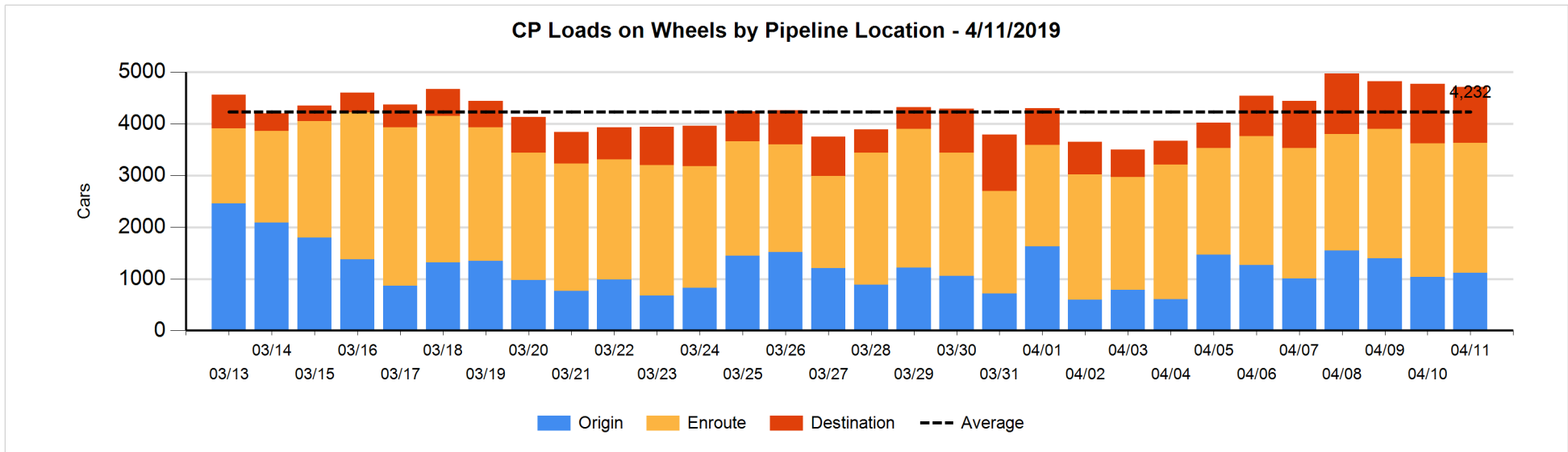
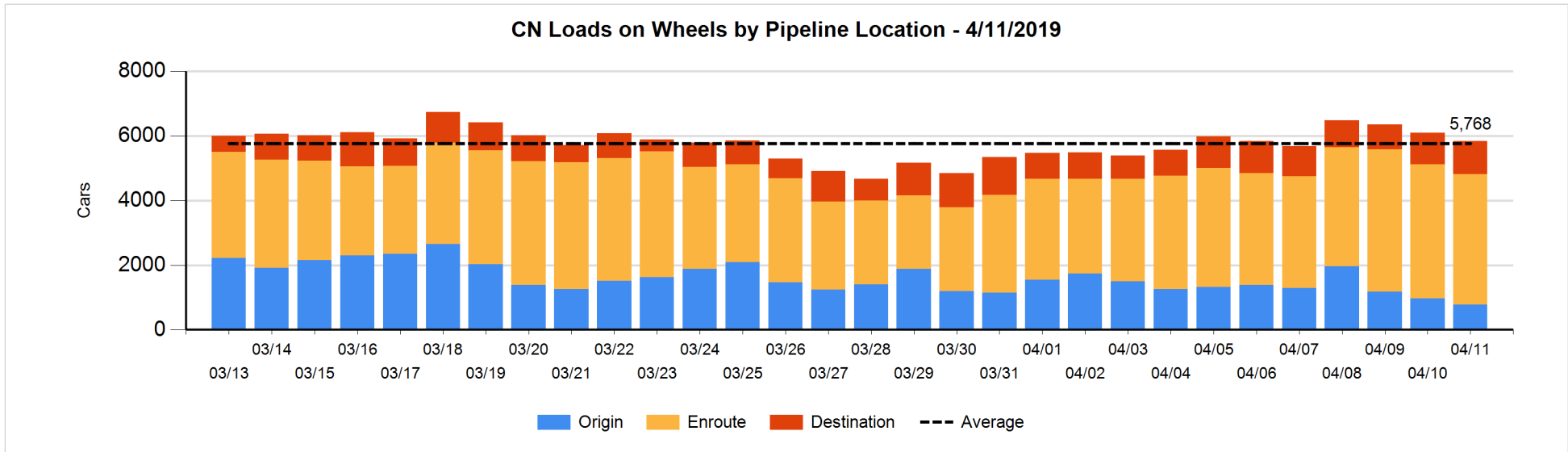


Daily Loads on Wheels By Pipeline Location - 4/11/2019

	E Canada	Prince Rupert	Thunder Bay	USA/MEX	Vancouver	Total
CN						
Origin	30	300	100	18	333	781
Enroute	405	1,050	207	246	2,129	4,037
Destination	111	148	60	13	684	1,016
	546	1,498	367	277	3,146	5,834
CP						
Origin			261	32	822	1,115
Enroute	143		215	136	2,020	2,514
Destination	6		58	47	974	1,085
	149		534	215	3,816	4,714
US Rail / Short Line						
Origin						
Enroute	2			83		85
Destination				82	12	94
	2			165	12	179

Change in Daily Loads on Wheels By Pipeline Location - Prior 24 Hours

	E Canada	Prince Rupert	Thunder Bay	USA/MEX	Vancouver	Total
CN						
Origin	-85	-57	-54	15	-10	-191
Enroute	12	61	155	4	-335	-103
Destination	-42	-39	-49	-2	155	23
	-115	-35	52	17	-190	-271
CP						
Origin	-2		117	2	-42	75
Enroute	-2		100	-24	-145	-71
Destination	-3		-125	13	56	-59
	-7		92	-9	-131	-55
US Rail / Short Line						
Origin						
Enroute	0			-9		-9
Destination				-3	2	-1
	0			-12	2	-10

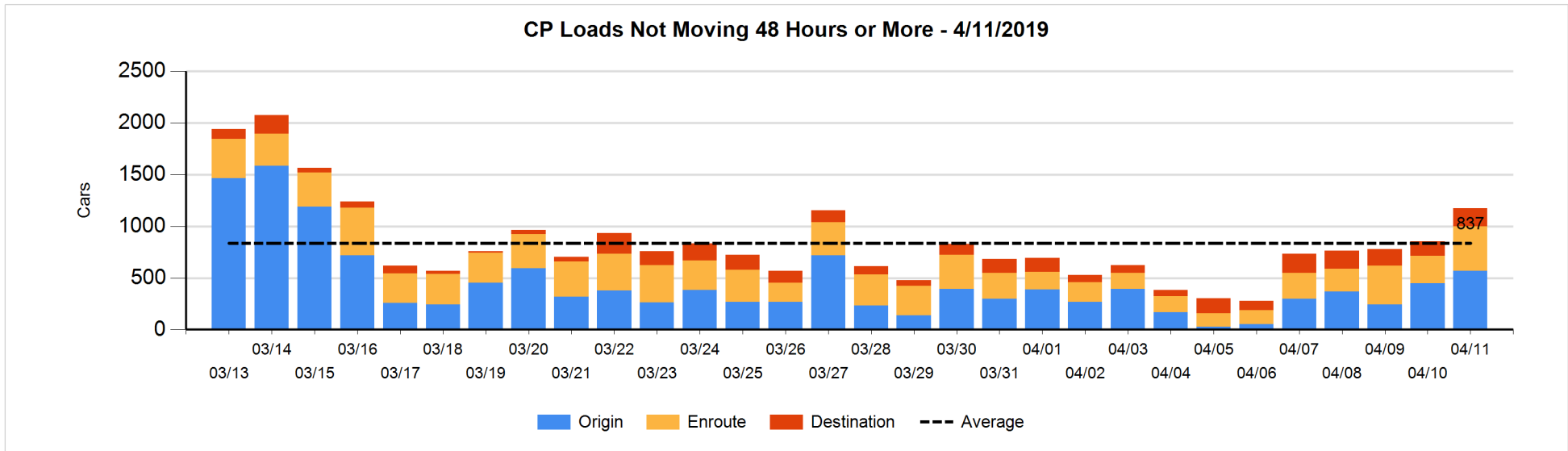
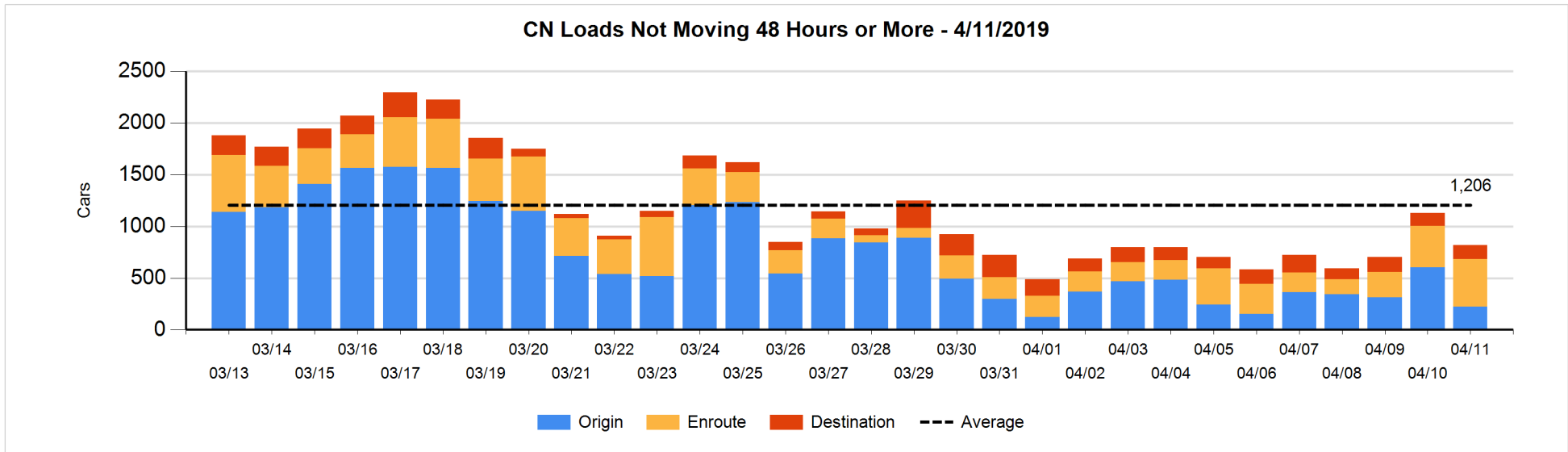


Loads Not Moving 48 Hours or More - 4/11/2019

	E Canada	Prince Rupert	Thunder Bay	USA/MEX	Vancouver	Total
CN						
Origin		201		3	19	223
Enroute	23	65		25	345	458
Destination	12		3	12	111	138
	35	266	3	40	475	819
CP						
Origin			23	2	545	570
Enroute	78			7	346	431
Destination	6		10	20	137	173
	84		33	29	1028	1174
US Rail / Short Line						
Origin						
Enroute	2			62		64
Destination				49	4	53
	2			111	4	117

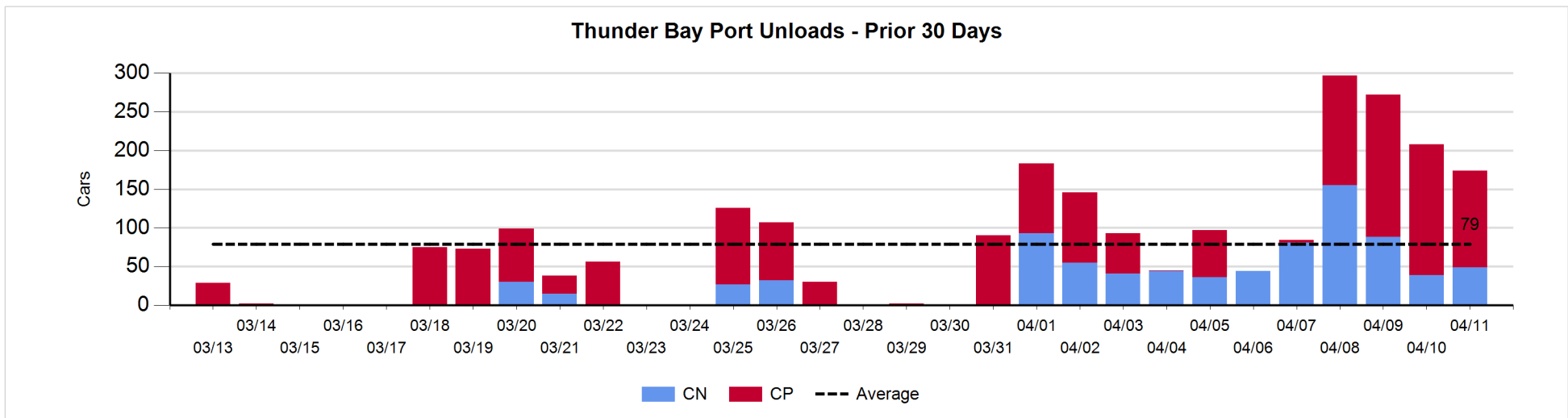
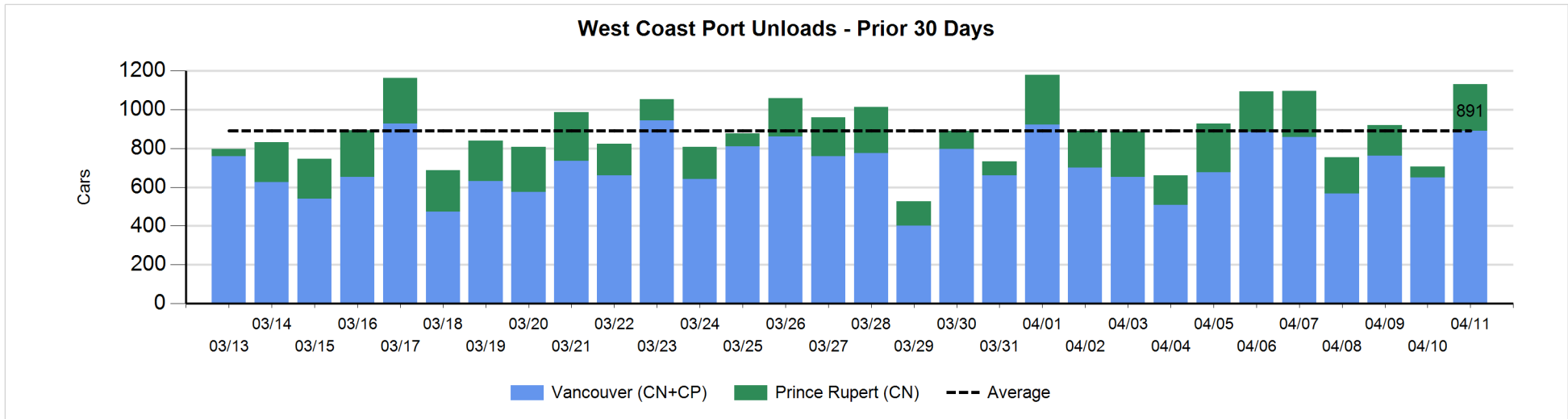
Change in Loads Not Moving 48 Hours or More - 4/11/2019

	E Canada	Prince Rupert	Thunder Bay	USA/MEX	Vancouver	Total
CN						
Origin	-85	-104		0	-189	-378
Enroute	-2	59		6	-10	53
Destination	-1		0	10	7	16
	-88	-45	0	16	-192	-309
CP						
Origin			1	0	121	122
Enroute	69		-1	0	96	164
Destination	0		8	9	18	35
	69		8	9	235	321
US Rail / Short Line						
Origin						
Enroute	0			20		20
Destination				-6	-1	-7
	0			14	-1	13



Port Unloads - 4/11/2019

	Prince Rupert	Vancouver	West Coast Total	Thunder Bay	Total
CN	242	375	617	49	666
CP		514	514	125	639
	242	889	1,131	174	1,305



Port Terminal Status

Vancouver

Daily Activity for 4/11/2019

	Cars Arrived	Cars Received in Interchange	Cars Delivered in Interchange	Cars Placed for Unloading	Loads on Wheels at Destination As of 4/11/2019
CN	430	131	239	309	684
CP	676	239	135	489	974
SRY		4		4	12

Port Unloads

	04/11	04/10	Week To Date	Last Week
CN	375	376	1,224	2,335
CP	514	273	1,641	2,867
SRY	6	8	31	59

Age Profile of Loaded Cars Waiting Placement for Unloading

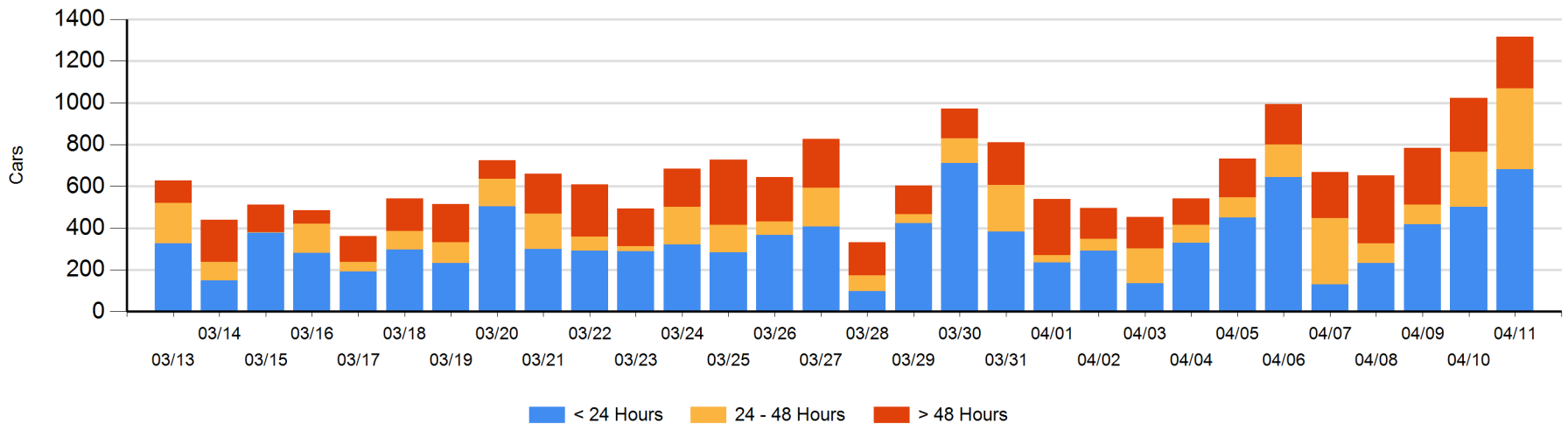
Today

	< 24 Hrs	24 - 48 Hrs	> 48-72 Hrs	> 72 Hrs	Total On Hand
CN	237	65	35	107	444
CP	446	322	32	73	873
SRY					0

Change in Last 24 Hours

	< 24 Hrs	24-48 Hrs	48 - 72 Hrs	> 72 Hrs
CN	144	-9	7	-6
CP	38	133	30	-43
SRY				

Loaded Cars on Hand Vancouver Waiting for Placement - Last 30 Days All Railways



Port Terminal Status

Prince Rupert

Daily Activity for 4/11/2019

	Cars Arrived	Cars Received in Interchange	Cars Delivered in Interchange	Cars Placed for Unloading	Loads on Wheels at Destination As of 4/11/2019
CN	203			202	148

Port Unloads

	04/11	04/10	Week To Date	Last Week
CN	242	57	645	1,529

Age Profile of Loaded Cars Waiting Placement for Unloading

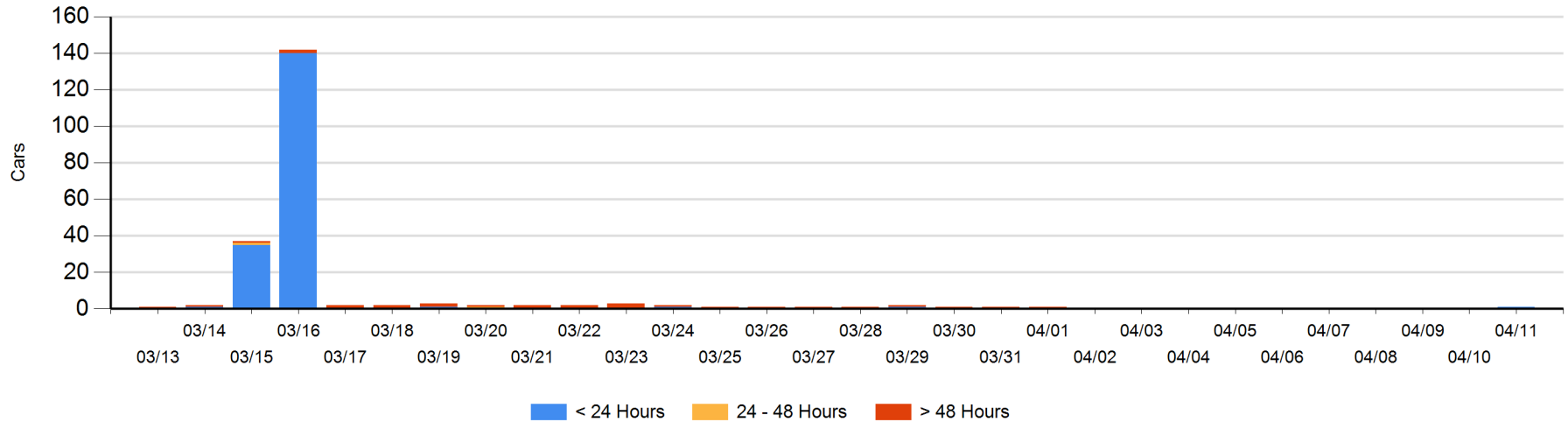
Today

	< 24 Hrs	24 - 48 Hrs	> 48-72 Hrs	> 72 Hrs	Total On Hand
CN	1				1

Change in Last 24 Hours

	< 24 Hrs	24-48 Hrs	48 - 72 Hrs	> 72 Hrs
CN	1			

Loaded Cars on Hand Prince Rupert Waiting for Placement - Last 30 Days All Railways



Port Terminal Status

Thunder Bay

Daily Activity for 4/11/2019

	Cars Arrived	Cars Received in Interchange	Cars Delivered in Interchange	Cars Placed for Unloading	Loads on Wheels at Destination As of 4/11/2019
CN					60
CP				73	58

Port Unloads

	04/11	04/10	Week To Date	Last Week
CN	49	39	331	394
CP	125	169	620	298

Age Profile of Loaded Cars Waiting Placement for Unloading

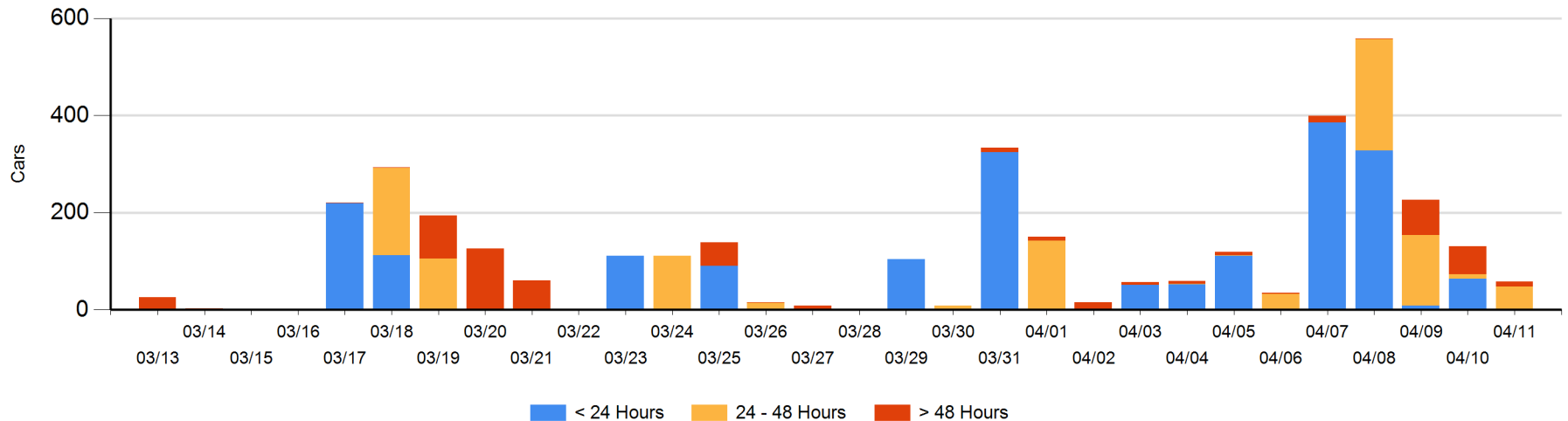
Today

	< 24 Hrs	24 - 48 Hrs	> 48-72 Hrs	> 72 Hrs	Total On Hand
CN			1		1
CP		48	8	1	57

Change in Last 24 Hours

	< 24 Hrs	24-48 Hrs	48 - 72 Hrs	> 72 Hrs
CN		-1	1	
CP	-64	40	-49	0

Loaded Cars on Hand Thunder Bay Waiting for Placement - Last 30 Days All Railways



Measurement Definitions

Loads on Wheels	<p>Count of loaded rail cars including all rail cars that have been released loaded at origin and have not been reported by the railway as unloaded at destination.</p> <p>Counts include all rail cars (hopper cars and boxcars) moving within a pipeline.</p>
Loads Not Moving	<p>Loaded rail cars for which the railways have not reported a movement event for 48 hours or more whether the rail car is at origin, enroute or at destination.</p>
Port Unloads	<p>Count of rail cars reported by railways as unloaded at the western port destinations of Vancouver, Prince Rupert and Thunder Bay.</p> <p>Unload counts include all rail cars (hopper cars and boxcars) unloaded by all receivers including major port terminals, transloaders and other receivers.</p>
Cars Arrived	<p>Count of rail cars reported as arrived at the destination railway terminal.</p>
Cars Received in Interchange	<p>Count of rail cars received in interchange by each railway within a destination railway terminal. Interchange activity is tracked for the Vancouver and Thunder Bay pipelines as applicable.</p>
Cars Delivered in Interchange	<p>Count of rail cars delivered in interchange by each railway within a destination railway terminal. Interchange activity is tracked for the Vancouver and Thunder Bay pipelines as applicable.</p>
Cars Placed for Unloading	<p>Count of rail cars reported by the railways as placed loaded at the receiver's facility for unloading.</p>
Loads on Wheels at Destination	<p>Count of rail cars that remain under load within the destination railway terminal including rail cars that have been reported as placed for unloading but not yet reported as unloaded.</p>
Waiting Placement for Unloading	<p>Count of rail cars that have been reported as arrived at the destination railway terminal but not reported as placed for unloading by the railway.</p> <p>For the Ports of Vancouver, Prince Rupert and Thunder Bay the count of rail cars waiting placement for unloading is categorized by age – i.e. the elapsed time from arrival at destination to the current report date.</p>