

SPEED READ

- Loads on wheels decreased overnight, reflecting a decline in both CN and CP volumes. On a net basis, volumes decreased due to lower traffic across all corridors - Vancouver, Thunder Bay, Prince Rupert, USA/MEX and E. Canada.
- Network fluidity improved overnight, led by a decline in idle car counts on both CN and CP by 5% (-65) and 27% (-323), respectively. The total count of cars for 4+ days on both railways increased slightly (+2) overnight and have now increased for the eighth consecutive day - now at 956 cars.
- Two days in Week 38 unloads now ahead of prior week's performance by 700 unloads, reflecting improved week over week performance at Vancouver and Prince Rupert offset by lower unloads at Thunder Bay.

Loads on Wheels

- Loads on wheels decreased 7% (-837) overnight, due to lower traffic on both CN and CP - combined total at 10,953 and 5% above the trailing 30-day average.
- On a net basis, the decline in loads on wheels indicates lower traffic across all corridors - Vancouver, Thunder Bay, Prince Rupert, USA/MEX and E. Canada.
- CN volumes fell 4% (-241) overnight, with lower traffic across all corridors other than Vancouver. System wide CN loads on wheels currently at 5,863 and 2% above the trailing 30-day average.
- CP volumes decreased significantly by 11% (-597) overnight, driven by a decline in traffic across all corridors other than Thunder Bay. CP system wide loads on wheels currently at 4,942 and 14% above the trailing 30-day average.
- Vancouver currently at 6,382, decreased 9% (-625) overnight, now 4% above the trailing 30-day average.
- The Prince Rupert pipeline now at 1,518, fell slightly by 1% (-20) overnight, and in line with the trailing 30-day average.
- Thunder Bay volumes fell 6% (-102) overnight - presently at 1,572 and 115% above the trailing 30-day average, with 77% of traffic moving on CP.

Hopper Car Rationing

- CN rationed 456 hopper cars in week 36.

Loads Not Moving

- **The count of cars not moving for 48+ hours decreased 16% (-388) overnight, marking lower counts on both CN and CP. Idle car counts currently at 2,037 and 14% above the trailing 30-day average.**
- CN
 - **The count of idle cars for 48+ hours declined 5% (-65) overnight - now at 1,157 cars.**
 - The number of cars idle for 4+ days fell 18% (-89) overnight - currently at 419 cars.
 - The count of cars not moving for 7+ days declined significantly by 60% (-193) overnight - currently at 127 cars.
 - Vancouver represents 69% of all idle cars.
 - In total 11% of all idle cars are dwelling at origin locations.
- CP
 - **CP idle car counts for 48+ hours decreased 27% (-323) overnight - currently at 880 cars.**
 - The number of cars idle for 4+ days rose 20% (+91) overnight - currently at 537 cars.
 - The number of cars idle for 7+ days fell 12% (-26) overnight - now at 196 cars.

- Vancouver accounts for 85% of all idle cars.
- In total 39% of all idle cars are dwelling at origin locations.

Port Performance

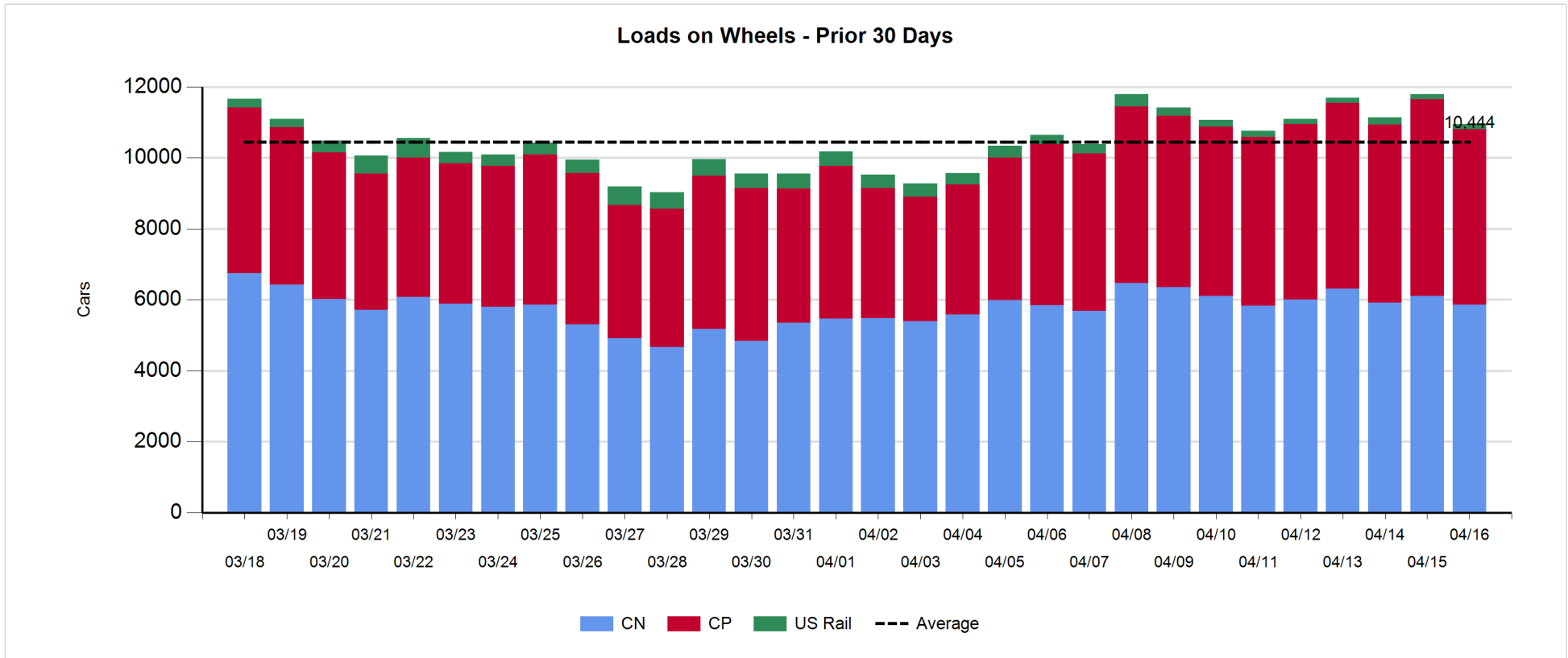
- CN and CP reported a total of 1,453 cars unloaded at the three major ports, now 40% above the trailing 30-day average. Two days in Week 38 unloads now ahead of last week's pace by 700 unloads, reflecting higher unloads at Vancouver and Prince Rupert offset by lower unloads at Thunder Bay.
- Vancouver
 - 915 unloads reported by CN and CP at the Port of Vancouver; CN - 326 and CP - 589. Two days in Week 38 unloads are tracking ahead of last week's performance by 550 unloads.
 - There are about 1,000 cars on site at Vancouver with 600 cars arriving at the port in the last 24 hours.
 - CN and CP have more than 2,550 cars in British Columbia en route to Vancouver, with more than 1,300 cars at Kamloops and west, and 51% of traffic moving on CN.
- Prince Rupert
 - Prince Rupert reported 212 unloads, now ahead of last week's unloads after two days by 150 unloads.
 - Loads on wheels now above 1,000 cars - currently at 1,518 cars.
 - There are fewer than 300 cars west of Jasper en route to Prince Rupert.
 - There are nearly 250 cars on site at Prince Rupert with 300 cars arriving at the port in the last 24 hours.
- Thunder Bay
 - 326 unloads, the highest seen in the last 30 days, were reported at Thunder Bay yesterday. Two days in Week 38 unloads are tracking behind last week's pace by 1 unload.
 - There are 550 cars on site at Thunder Bay with 300 cars arriving at the port in the prior 24 hours.
 - There are 350 cars en route to Thunder Bay from Winnipeg and east.

Daily Loads on Wheels - 4/16/2019

| | E Canada | Prince Rupert | Thunder Bay | USA/MEX | Vancouver | Total |
|------------|----------|---------------|-------------|---------|-----------|--------|
| CN | 744 | 1,518 | 359 | 296 | 2,946 | 5,863 |
| CP | 238 | | 1,213 | 85 | 3,406 | 4,942 |
| Short Line | | | | | 30 | 30 |
| US Rail | | | | 118 | | 118 |
| | 982 | 1,518 | 1,572 | 499 | 6,382 | 10,953 |

Change in Loads on Wheels - Prior 24 Hours

| | E Canada | Prince Rupert | Thunder Bay | USA/MEX | Vancouver | Total |
|------------|----------|---------------|-------------|---------|-----------|-------|
| CN | -7 | -20 | -194 | -38 | 18 | -241 |
| CP | -6 | | 92 | -42 | -641 | -597 |
| Short Line | | | | | -2 | -2 |
| US Rail | | | | 3 | | 3 |
| | -13 | -20 | -102 | -77 | -625 | -837 |

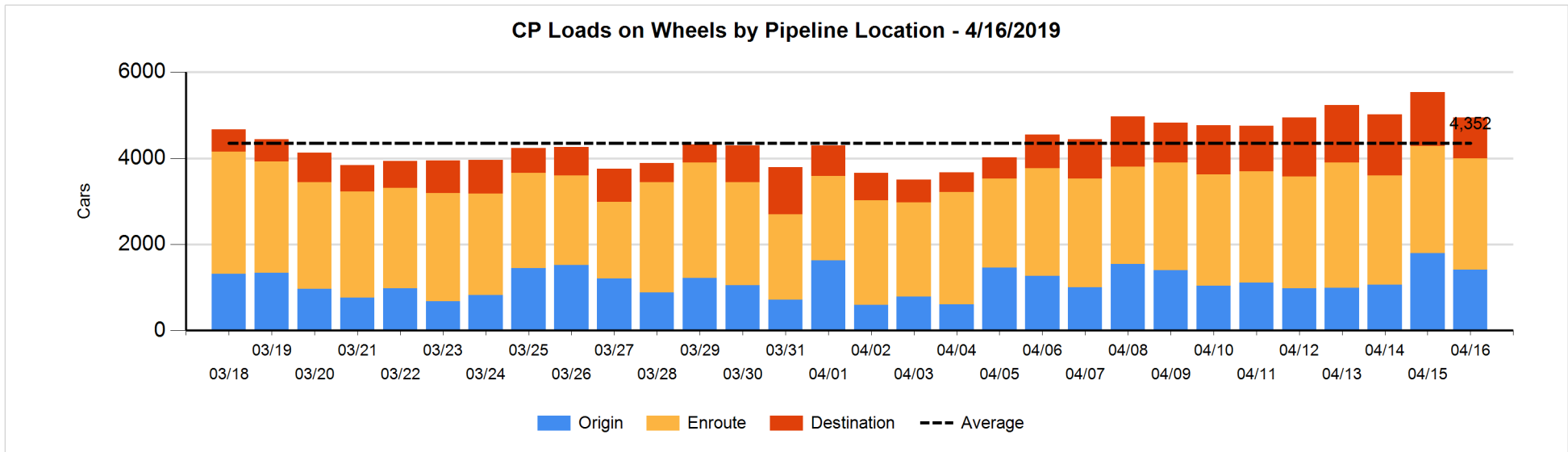
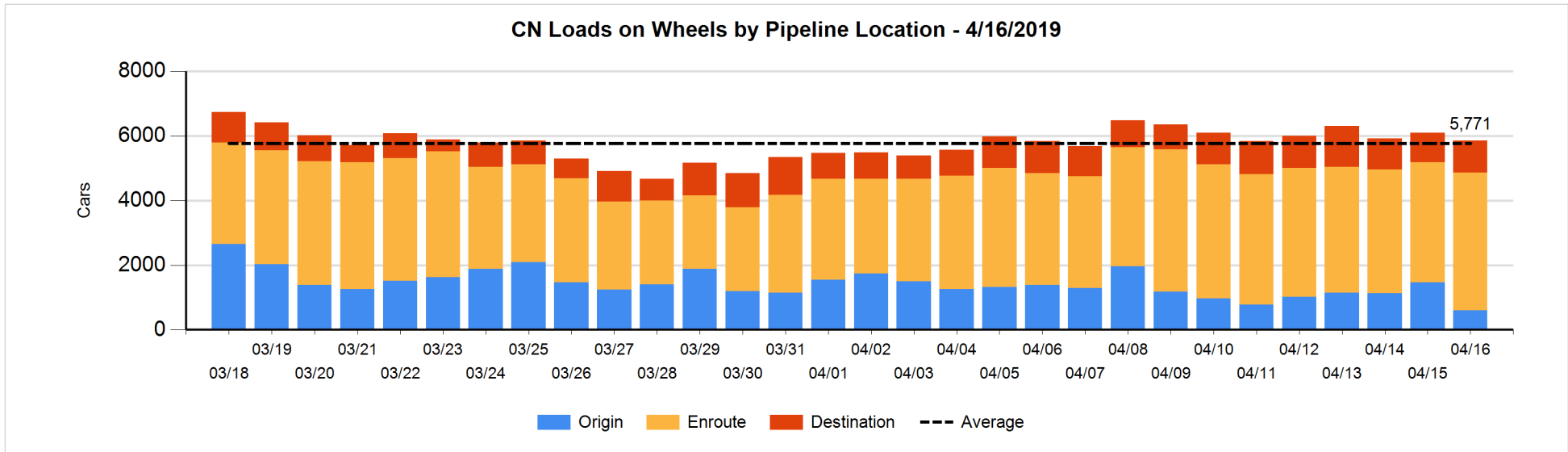


Daily Loads on Wheels By Pipeline Location - 4/16/2019

| | E Canada | Prince Rupert | Thunder Bay | USA/MEX | Vancouver | Total |
|----------------------|----------|---------------|-------------|---------|-----------|-------|
| CN | | | | | | |
| Origin | | 228 | 101 | 25 | 239 | 593 |
| Enroute | 658 | 1,060 | 115 | 189 | 2,244 | 4,266 |
| Destination | 86 | 230 | 143 | 82 | 463 | 1,004 |
| | 744 | 1,518 | 359 | 296 | 2,946 | 5,863 |
| CP | | | | | | |
| Origin | 124 | | 466 | 6 | 815 | 1,411 |
| Enroute | 92 | | 344 | 40 | 2,103 | 2,579 |
| Destination | 22 | | 403 | 39 | 488 | 952 |
| | 238 | | 1,213 | 85 | 3,406 | 4,942 |
| US Rail / Short Line | | | | | | |
| Origin | | | | | | |
| Enroute | | | | 47 | | 47 |
| Destination | | | | 71 | 30 | 101 |
| | | | | 118 | 30 | 148 |

Change in Daily Loads on Wheels By Pipeline Location - Prior 24 Hours

| | E Canada | Prince Rupert | Thunder Bay | USA/MEX | Vancouver | Total |
|----------------------|----------|---------------|-------------|---------|-----------|-------|
| CN | | | | | | |
| Origin | -103 | -384 | 0 | 0 | -391 | -878 |
| Enroute | 109 | 270 | -128 | -72 | 375 | 554 |
| Destination | -13 | 94 | -66 | 34 | 34 | 83 |
| | -7 | -20 | -194 | -38 | 18 | -241 |
| CP | | | | | | |
| Origin | -3 | | 56 | 2 | -437 | -382 |
| Enroute | -2 | | -4 | -52 | 150 | 92 |
| Destination | -1 | | 40 | 8 | -354 | -307 |
| | -6 | | 92 | -42 | -641 | -597 |
| US Rail / Short Line | | | | | | |
| Origin | | | | | | |
| Enroute | | | | -1 | | -1 |
| Destination | | | | 4 | -2 | 2 |
| | | | | 3 | -2 | 1 |

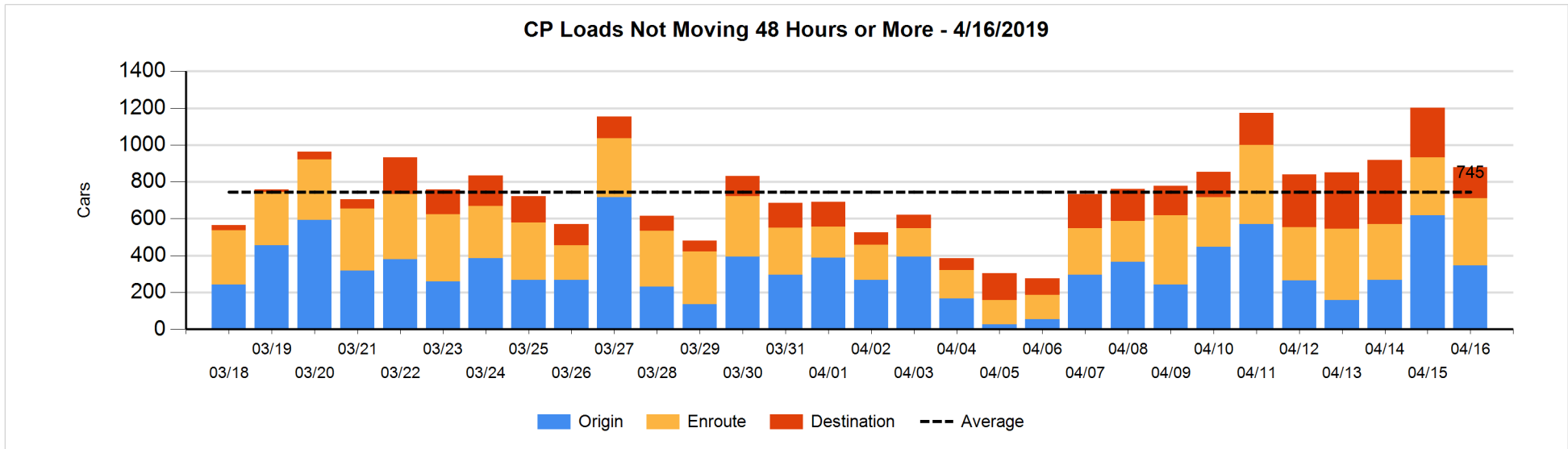
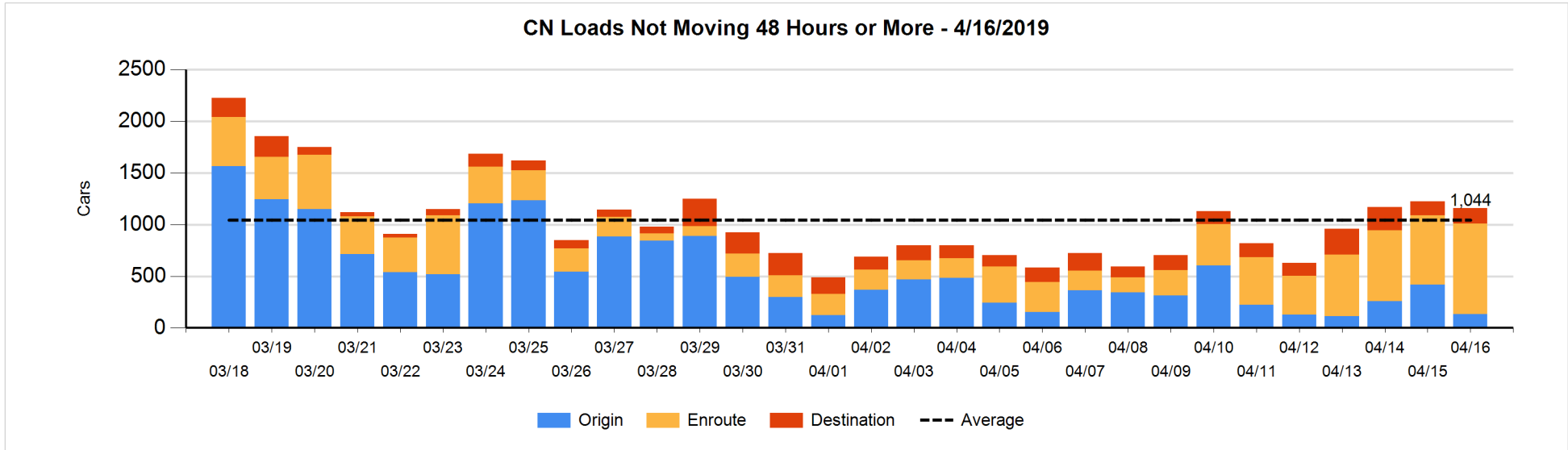


Loads Not Moving 48 Hours or More - 4/16/2019

| | E Canada | Prince Rupert | Thunder Bay | USA/MEX | Vancouver | Total |
|-----------------------------|----------|---------------|-------------|---------|-----------|-------|
| CN | | | | | | |
| Origin | | 104 | | 1 | 26 | 131 |
| Enroute | 87 | 99 | | 17 | 677 | 880 |
| Destination | 45 | | 3 | 3 | 95 | 146 |
| | 132 | 203 | 3 | 21 | 798 | 1157 |
| CP | | | | | | |
| Origin | 113 | | | 4 | 229 | 346 |
| Enroute | 3 | | 2 | 8 | 352 | 365 |
| Destination | | | 1 | | 168 | 169 |
| | 116 | | 3 | 12 | 749 | 880 |
| US Rail / Short Line | | | | | | |
| Origin | | | | | | |
| Enroute | | | | 36 | | 36 |
| Destination | | | | 35 | 12 | 47 |
| | | | | 71 | 12 | 83 |

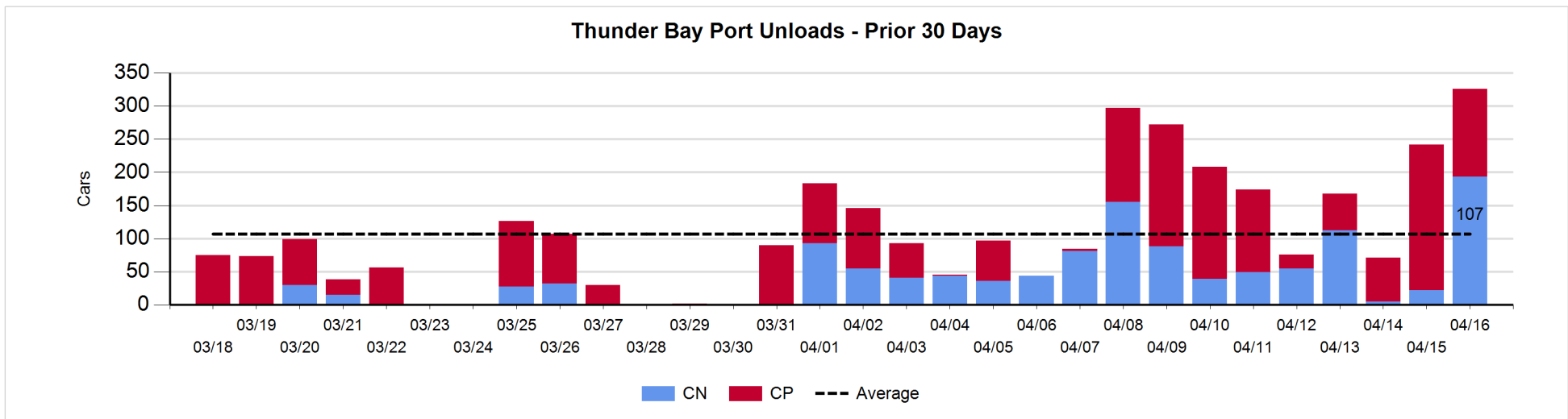
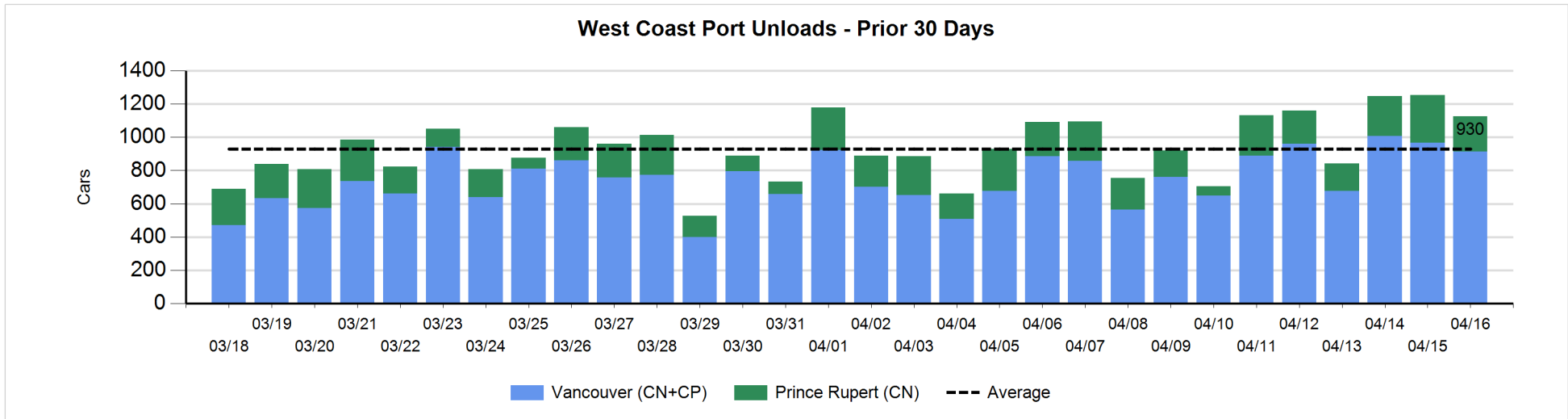
Change in Loads Not Moving 48 Hours or More - 4/16/2019

| | E Canada | Prince Rupert | Thunder Bay | USA/MEX | Vancouver | Total |
|-----------------------------|----------|---------------|-------------|---------|-----------|-------|
| CN | | | | | | |
| Origin | | -103 | | 0 | -186 | -289 |
| Enroute | 48 | 96 | | -1 | 69 | 212 |
| Destination | 16 | -1 | 0 | -5 | 2 | 12 |
| | 64 | -8 | 0 | -6 | -115 | -65 |
| CP | | | | | | |
| Origin | 0 | | -8 | 0 | -265 | -273 |
| Enroute | -3 | | 0 | -50 | 105 | 52 |
| Destination | -1 | | -22 | -4 | -75 | -102 |
| | -4 | | -30 | -54 | -235 | -323 |
| US Rail / Short Line | | | | | | |
| Origin | | | | | | |
| Enroute | | | | 1 | | 1 |
| Destination | | | | -3 | 4 | 1 |
| | | | | -2 | 4 | 2 |



Port Unloads - 4/16/2019

| | Prince Rupert | Vancouver | West Coast Total | Thunder Bay | Total |
|----|---------------|-----------|------------------|-------------|-------|
| CN | 212 | 326 | 538 | 193 | 731 |
| CP | | 589 | 589 | 133 | 722 |
| | 212 | 915 | 1,127 | 326 | 1,453 |



Port Terminal Status

Vancouver

Daily Activity for 4/16/2019

| | Cars Arrived | Cars Received in Interchange | Cars Delivered in Interchange | Cars Placed for Unloading | Loads on Wheels at Destination As of 4/16/2019 |
|-----|--------------|------------------------------|-------------------------------|---------------------------|--|
| CN | 148 | 113 | 99 | 318 | 463 |
| CP | 446 | 99 | 112 | 405 | 488 |
| SRY | | | 1 | 1 | 30 |

Port Unloads

| | 04/16 | 04/15 | Week To Date | Last Week |
|-----|-------|-------|--------------|-----------|
| CN | 326 | 435 | 761 | 2,435 |
| CP | 589 | 533 | 1,122 | 3,077 |
| SRY | 1 | 8 | 9 | 45 |

Age Profile of Loaded Cars Waiting Placement for Unloading

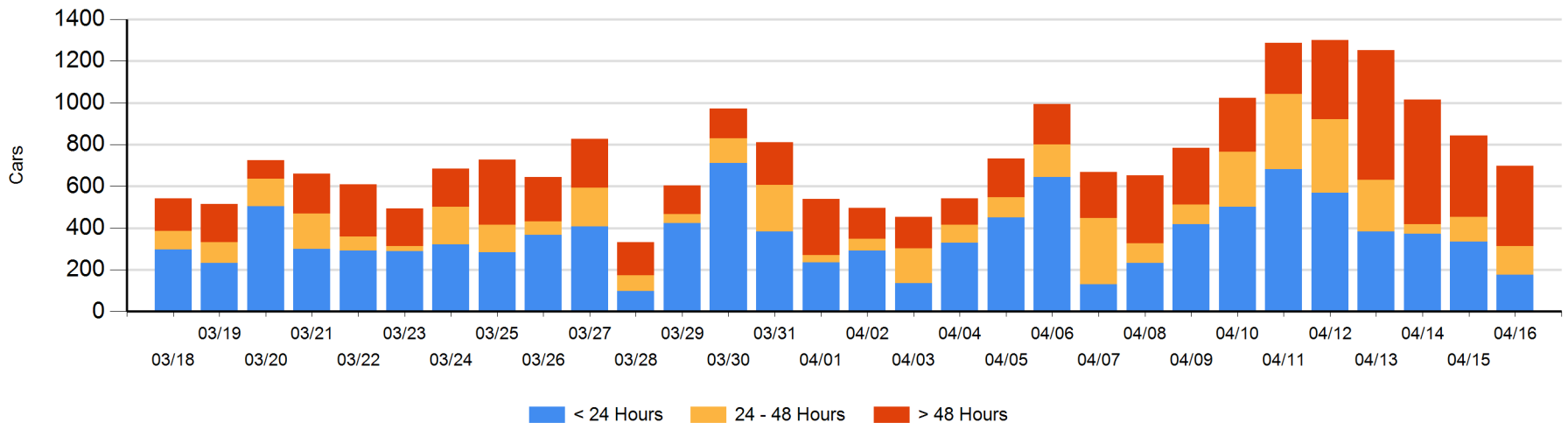
Today

| | < 24 Hrs | 24 - 48 Hrs | > 48-72 Hrs | > 72 Hrs | Total On Hand |
|-----|----------|-------------|-------------|----------|---------------|
| CN | 32 | 28 | 53 | 109 | 222 |
| CP | 144 | 108 | 42 | 182 | 476 |
| SRY | | | | | 0 |

Change in Last 24 Hours

| | < 24 Hrs | 24-48 Hrs | 48 - 72 Hrs | > 72 Hrs |
|-----|----------|-----------|-------------|----------|
| CN | 4 | -38 | 24 | 19 |
| CP | -162 | 55 | 37 | -84 |
| SRY | | | | |

Loaded Cars on Hand Vancouver Waiting for Placement - Last 30 Days All Railways



Port Terminal Status

Prince Rupert

Daily Activity for 4/16/2019

| | Cars Arrived | Cars Received in Interchange | Cars Delivered in Interchange | Cars Placed for Unloading | Loads on Wheels at Destination As of 4/16/2019 |
|----|--------------|------------------------------|-------------------------------|---------------------------|--|
| CN | 306 | | | 306 | 230 |

Port Unloads

| | 04/16 | 04/15 | Week To Date | Last Week |
|----|-------|-------|--------------|-----------|
| CN | 212 | 285 | 497 | 1,246 |

Age Profile of Loaded Cars Waiting Placement for Unloading

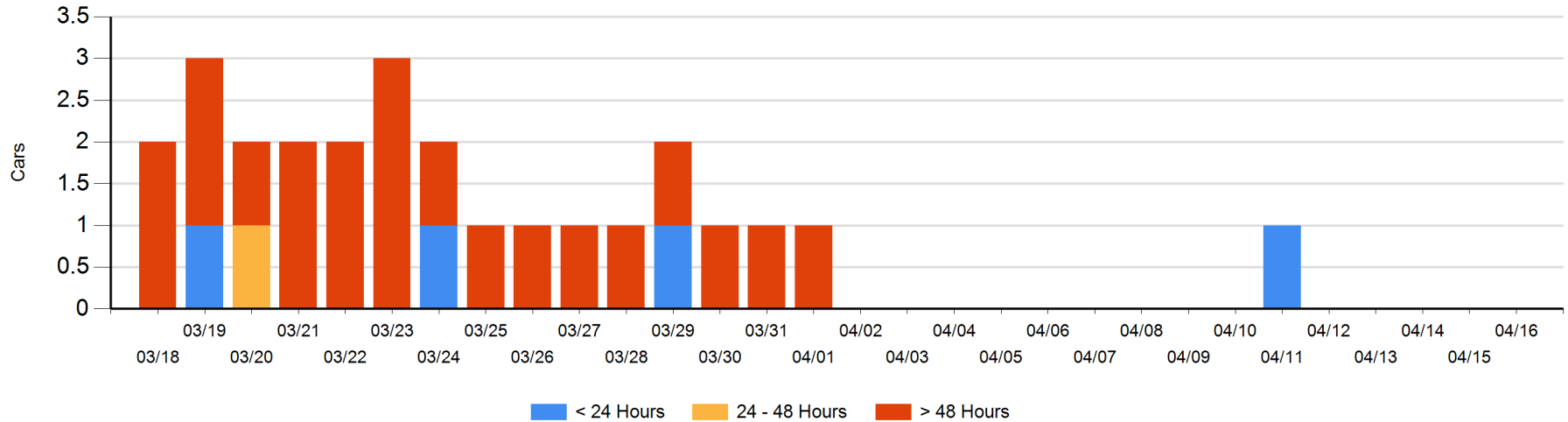
Today

| | < 24 Hrs | 24 - 48 Hrs | > 48-72 Hrs | > 72 Hrs | Total On Hand |
|----|----------|-------------|-------------|----------|---------------|
| CN | | | | | 0 |

Change in Last 24 Hours

| | < 24 Hrs | 24-48 Hrs | 48 - 72 Hrs | > 72 Hrs |
|----|----------|-----------|-------------|----------|
| CN | | | | |

Loaded Cars on Hand Prince Rupert Waiting for Placement - Last 30 Days All Railways



Port Terminal Status

Thunder Bay

Daily Activity for 4/16/2019

| | Cars Arrived | Cars Received in Interchange | Cars Delivered in Interchange | Cars Placed for Unloading | Loads on Wheels at Destination As of 4/16/2019 |
|----|--------------|------------------------------|-------------------------------|---------------------------|--|
| CN | 127 | | | 136 | 143 |
| CP | 174 | | | 286 | 403 |

Port Unloads

| | 04/16 | 04/15 | Week To Date | Last Week |
|----|-------|-------|--------------|-----------|
| CN | 193 | 22 | 215 | 503 |
| CP | 133 | 220 | 353 | 763 |

Age Profile of Loaded Cars Waiting Placement for Unloading

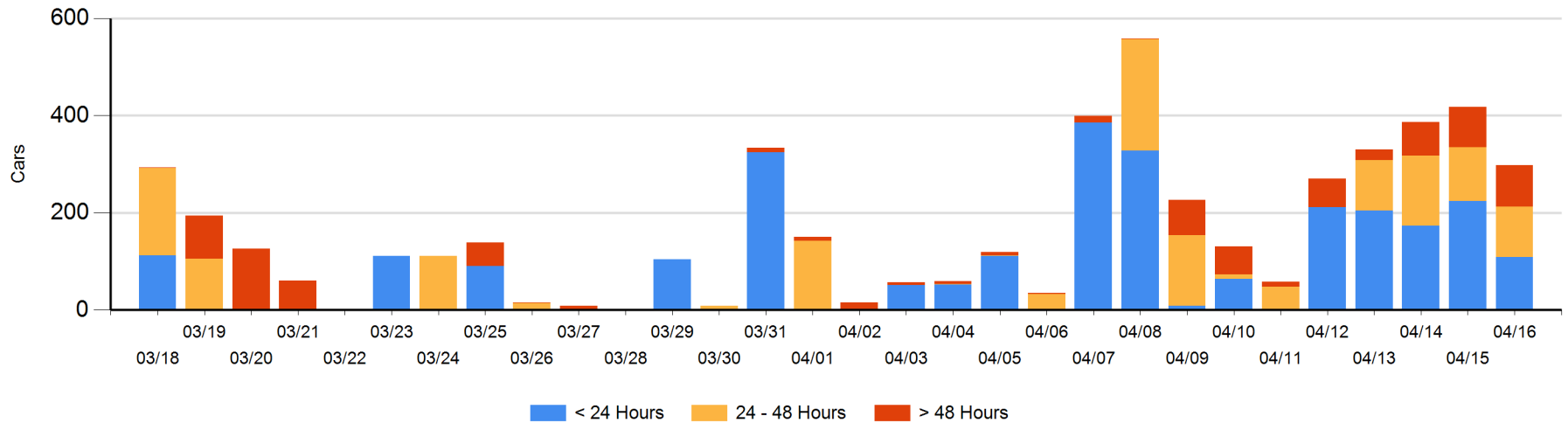
Today

| | < 24 Hrs | 24 - 48 Hrs | > 48-72 Hrs | > 72 Hrs | Total On Hand |
|----|----------|-------------|-------------|----------|---------------|
| CN | 47 | | | | 47 |
| CP | 62 | 104 | 46 | 39 | 251 |

Change in Last 24 Hours

| | < 24 Hrs | 24-48 Hrs | 48 - 72 Hrs | > 72 Hrs |
|----|----------|-----------|-------------|----------|
| CN | -9 | | | |
| CP | -106 | -7 | 8 | -6 |

Loaded Cars on Hand Thunder Bay Waiting for Placement - Last 30 Days All Railways



Measurement Definitions

| | |
|---------------------------------|---|
| Loads on Wheels | <p>Count of loaded rail cars including all rail cars that have been released loaded at origin and have not been reported by the railway as unloaded at destination.</p> <p>Counts include all rail cars (hopper cars and boxcars) moving within a pipeline.</p> |
| Loads Not Moving | <p>Loaded rail cars for which the railways have not reported a movement event for 48 hours or more whether the rail car is at origin, enroute or at destination.</p> |
| Port Unloads | <p>Count of rail cars reported by railways as unloaded at the western port destinations of Vancouver, Prince Rupert and Thunder Bay.</p> <p>Unload counts include all rail cars (hopper cars and boxcars) unloaded by all receivers including major port terminals, transloaders and other receivers.</p> |
| Cars Arrived | <p>Count of rail cars reported as arrived at the destination railway terminal.</p> |
| Cars Received in Interchange | <p>Count of rail cars received in interchange by each railway within a destination railway terminal. Interchange activity is tracked for the Vancouver and Thunder Bay pipelines as applicable.</p> |
| Cars Delivered in Interchange | <p>Count of rail cars delivered in interchange by each railway within a destination railway terminal. Interchange activity is tracked for the Vancouver and Thunder Bay pipelines as applicable.</p> |
| Cars Placed for Unloading | <p>Count of rail cars reported by the railways as placed loaded at the receiver's facility for unloading.</p> |
| Loads on Wheels at Destination | <p>Count of rail cars that remain under load within the destination railway terminal including rail cars that have been reported as placed for unloading but not yet reported as unloaded.</p> |
| Waiting Placement for Unloading | <p>Count of rail cars that have been reported as arrived at the destination railway terminal but not reported as placed for unloading by the railway.</p> <p>For the Ports of Vancouver, Prince Rupert and Thunder Bay the count of rail cars waiting placement for unloading is categorized by age – i.e. the elapsed time from arrival at destination to the current report date.</p> |