

SPEED READ

- Loads on wheels decreased overnight, marking lower CP traffic offset by an increase in CN volumes. On a net basis, volumes decreased due to reduced traffic across all corridors other than Prince Rupert.
- Network fluidity improved marginally overnight, led by a decline in idle car counts on CN by 27% (-318) offset by an increase in idle car counts on CP by 36% (+315). The total count of cars for 4+ days on both railways gained 10% (+92) overnight and have now increased for the ninth consecutive day - currently at 1,048 cars.
- Three days in Week 38 unloads now ahead of prior week's performance by more than 950 unloads, reflecting improved week over week performance across all three major ports - Vancouver, Thunder Bay and Prince Rupert.

Loads on Wheels

- Loads on wheels decreased 3% (-360) overnight, due to lower traffic on CP offset by slightly higher volumes on CN - combined total at 10,703 and 3% above the trailing 30-day average.
- On a net basis, the decline in loads on wheels reflects lower traffic across all corridors other than Prince Rupert.
- CN volumes increased slightly (+28) overnight, with higher traffic in the Prince Rupert and Thunder Bay corridors offset by lower volumes in the E. Canada, Vancouver and USA/MEX corridors. System wide CN loads on wheels presently at 5,892 and 3% above the trailing 30-day average.
- CP volumes decreased 8% (-383) overnight, driven by a decline in traffic across all corridors - Vancouver, Thunder Bay, USA/MEX and E. Canada. CP system wide loads on wheels presently at 4,668 and 7% above the trailing 30-day average.
- Vancouver presently at 6,152, decreased 4% (-283) overnight, now in line with the trailing 30-day average.
- The Prince Rupert pipeline presently at 1,681, increased significantly by 11% (+163) overnight, and 11% above the trailing 30-day average.
- Thunder Bay volumes declined 7% (-114) overnight - presently at 1,514 and 97% above the trailing 30-day average, with 75% of traffic moving on CP.

Hopper Car Rationing

- CN rationed 456 hopper cars in week 36.

Loads Not Moving

- **The count of cars not moving for 48+ hours decreased slightly (-3) overnight, reflecting lower counts on CN offset by higher counts on CP. Idle car counts currently at 2,035 and 15% above the trailing 30-day average.**
- CN
 - **The count of idle cars for 48+ hours decreased 27% (-318) overnight - presently at 839 cars.**
 - The number of cars idle for 4+ days declined 9% (-39) overnight - currently at 380 cars.
 - The count of cars not moving for 7+ days decreased significantly by 55% (-70) overnight - presently at 57 cars.
 - Vancouver represents 64% of all idle cars.
 - In total 26% of all idle cars are dwelling at origin locations.
- CP
 - **CP idle car counts for 48+ hours gained 36% (+315) overnight - presently at 1,196 cars.**
 - The number of cars idle for 4+ days increased 24% (+131) overnight - presently at 668 cars, the highest seen in the last 30 days.
 - The number of cars idle for 7+ days gained 3% (+6) overnight - presently at 202 cars.

- Vancouver accounts for 79% of all idle cars.
- In total 55% of all idle cars are dwelling at origin locations.

Port Performance

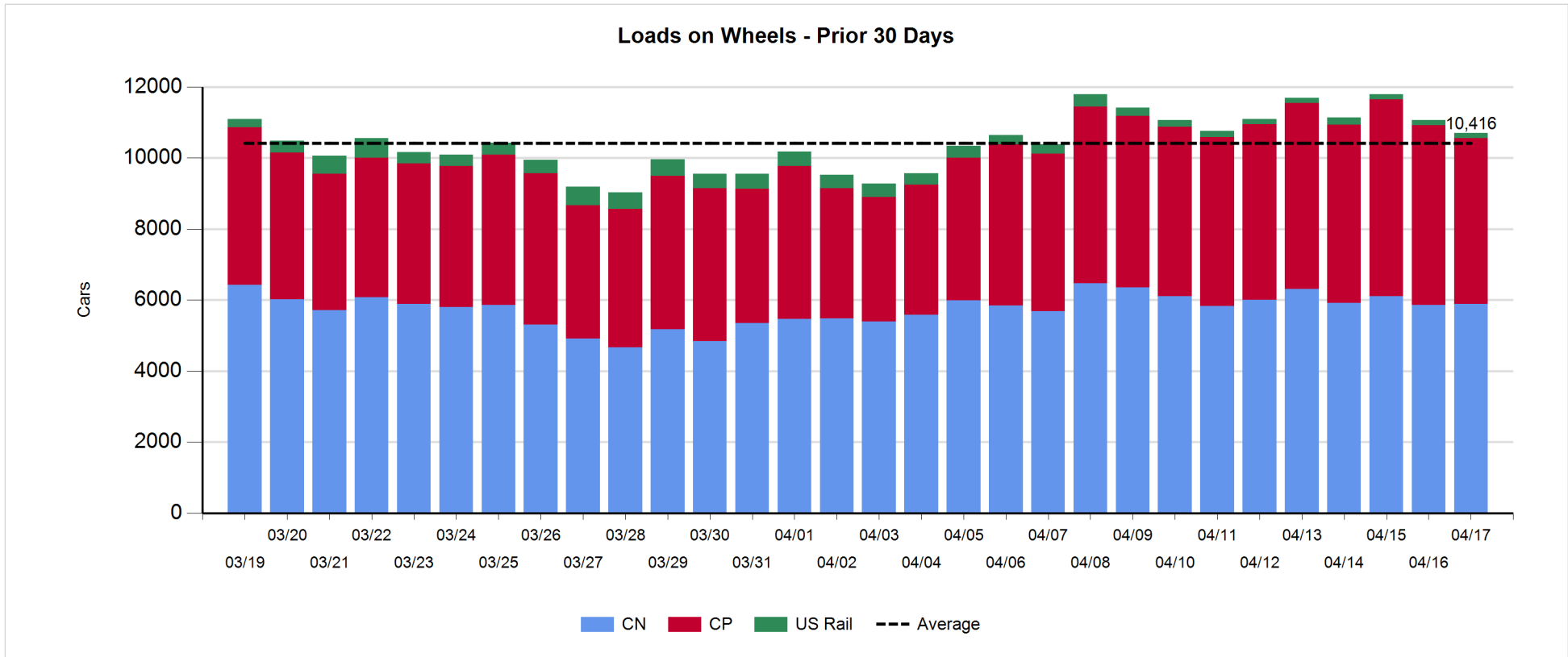
- CN and CP reported a total of 1,186 cars unloaded at the three major ports, now 13% above the trailing 30-day average. Three days in Week 38 unloads now ahead of last week's pace by more than 950 unloads, reflecting higher unloads across all three major ports - Vancouver, Thunder Bay and Prince Rupert.
- Vancouver
 - 636 unloads reported by CN and CP at the Port of Vancouver; CN - 223 and CP - 413. Three days in Week 38 unloads are tracking ahead of last week's performance by fewer than 550 unloads.
 - There are more than 1,250 cars on site at Vancouver with nearly 950 cars arriving at the port in the last 24 hours.
 - CN and CP have 2,200 cars in British Columbia en route to Vancouver, with 1,600 cars at Kamloops and west, and 56% of traffic moving on CP.
- Prince Rupert
 - Prince Rupert reported 230 unloads, now ahead of last week's unloads after three days by more than 300 unloads.
 - Loads on wheels now above 1,000 cars - presently at 1,681 cars.
 - There are 450 cars west of Jasper en route to Prince Rupert.
 - There are 50 cars on site at Prince Rupert with 100 cars arriving at the port in the last 24 hours.
- Thunder Bay
 - 320 unloads were reported at Thunder Bay yesterday. Three days in Week 38 unloads are tracking ahead of last week's pace by more than 100 unloads.
 - There are more than 550 cars on site at Thunder Bay with 350 cars arriving at the port in the prior 24 hours.
 - There are 550 cars en route to Thunder Bay from Winnipeg and east.

Daily Loads on Wheels - 4/17/2019

	E Canada	Prince Rupert	Thunder Bay	USA/MEX	Vancouver	Total
CN	676	1,681	372	282	2,881	5,892
CP	227		1,142	51	3,248	4,668
Short Line	4				23	27
US Rail				116		116
	907	1,681	1,514	449	6,152	10,703

Change in Loads on Wheels - Prior 24 Hours

	E Canada	Prince Rupert	Thunder Bay	USA/MEX	Vancouver	Total
CN	-68	163	13	-14	-66	28
CP	-12		-127	-34	-210	-383
Short Line	4				-7	-3
US Rail				-2		-2
	-76	163	-114	-50	-283	-360

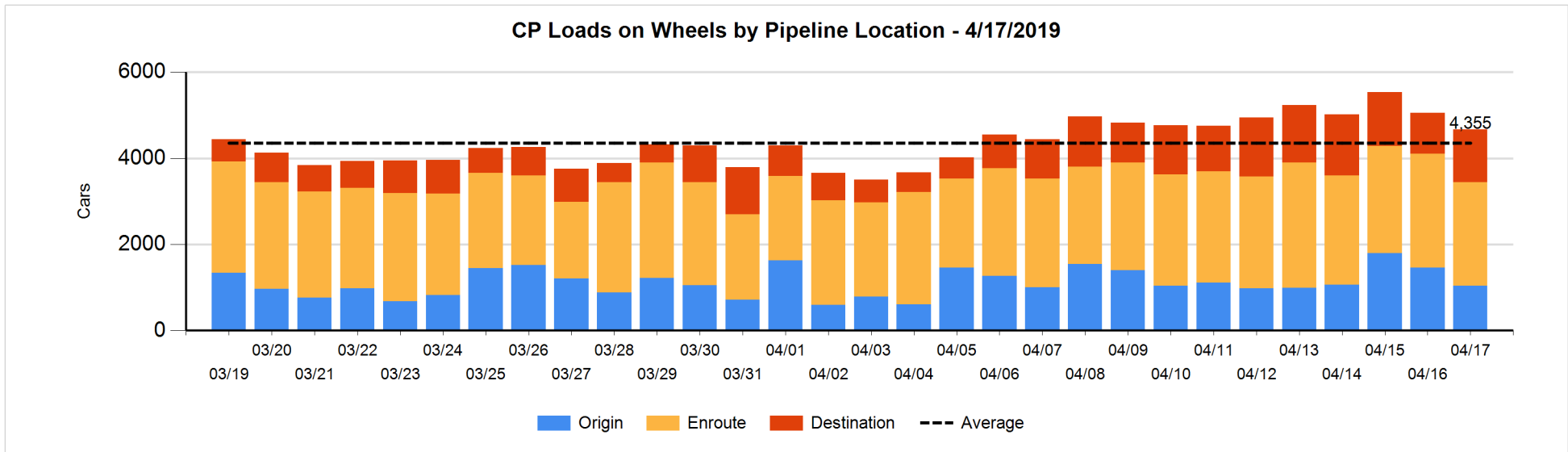
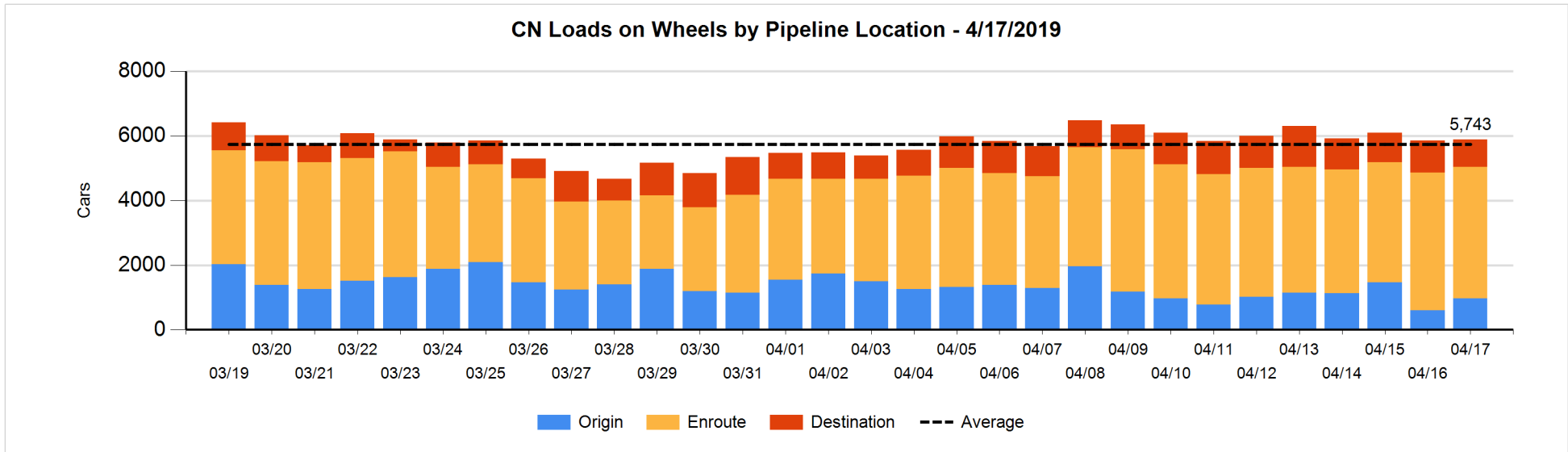


Daily Loads on Wheels By Pipeline Location - 4/17/2019

	E Canada	Prince Rupert	Thunder Bay	USA/MEX	Vancouver	Total
CN						
Origin	36	431	102	67	330	966
Enroute	568	1,191	199	184	1,934	4,076
Destination	72	59	71	31	617	850
	676	1,681	372	282	2,881	5,892
CP						
Origin	124		135		783	1,042
Enroute	32		506	19	1,838	2,395
Destination	71		501	32	627	1,231
	227		1,142	51	3,248	4,668
US Rail / Short Line						
Origin						
Enroute				43		43
Destination	4			73	23	100
	4			116	23	143

Change in Daily Loads on Wheels By Pipeline Location - Prior 24 Hours

	E Canada	Prince Rupert	Thunder Bay	USA/MEX	Vancouver	Total
CN						
Origin	36	203	1	42	91	373
Enroute	-90	131	84	-5	-311	-191
Destination	-14	-171	-72	-51	154	-154
	-68	163	13	-14	-66	28
CP						
Origin	-1		-331	-6	-83	-421
Enroute	-60		106	-21	-266	-241
Destination	49		98	-7	139	279
	-12		-127	-34	-210	-383
US Rail / Short Line						
Origin						
Enroute				-4		-4
Destination	4			2	-7	-1
	4			-2	-7	-5

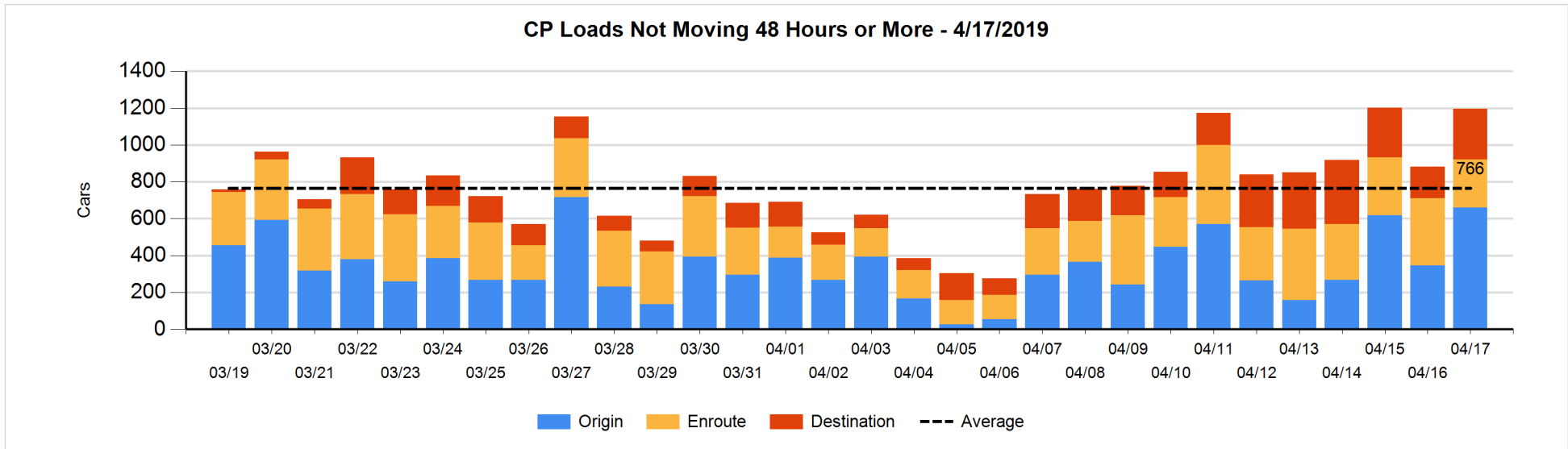
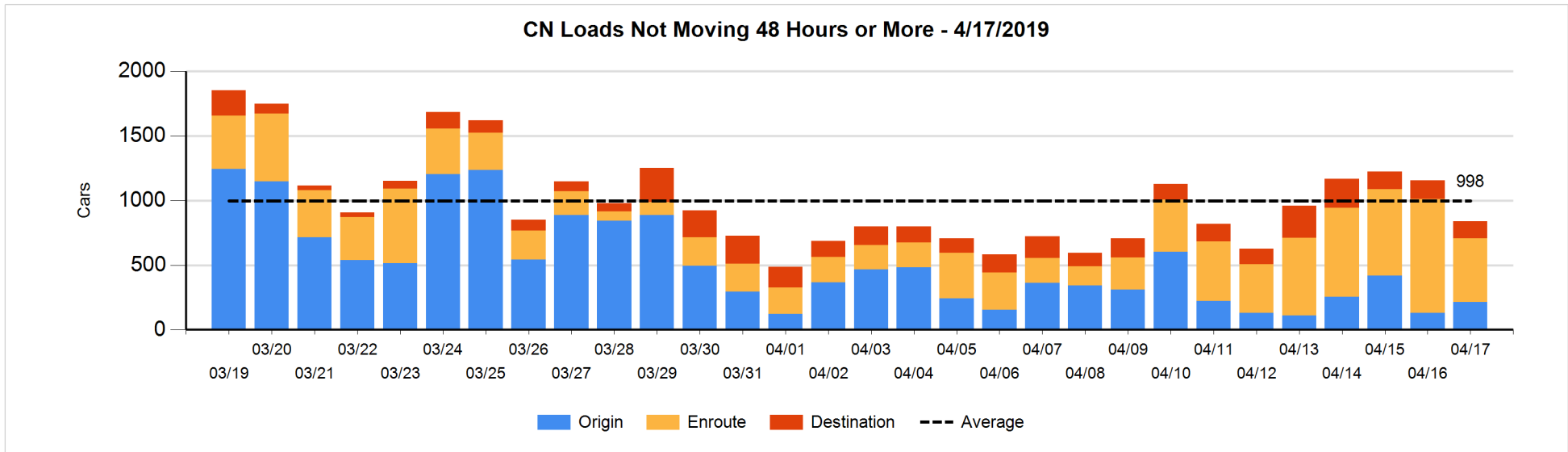


Loads Not Moving 48 Hours or More - 4/17/2019

	E Canada	Prince Rupert	Thunder Bay	USA/MEX	Vancouver	Total
CN						
Origin		103	4	25	82	214
Enroute	80	4		23	384	491
Destination	35		11	17	71	134
	115	107	15	65	537	839
CP						
Origin	123		25		511	659
Enroute	3		2	8	248	261
Destination			90		186	276
	126		117	8	945	1196
US Rail / Short Line						
Origin						
Enroute				34		34
Destination				29	22	51
				63	22	85

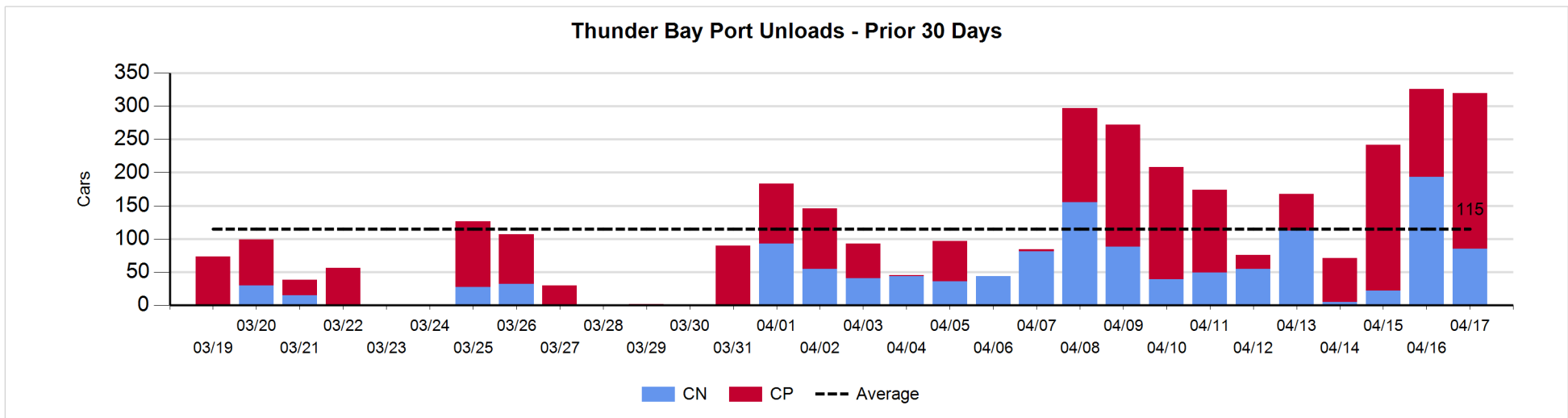
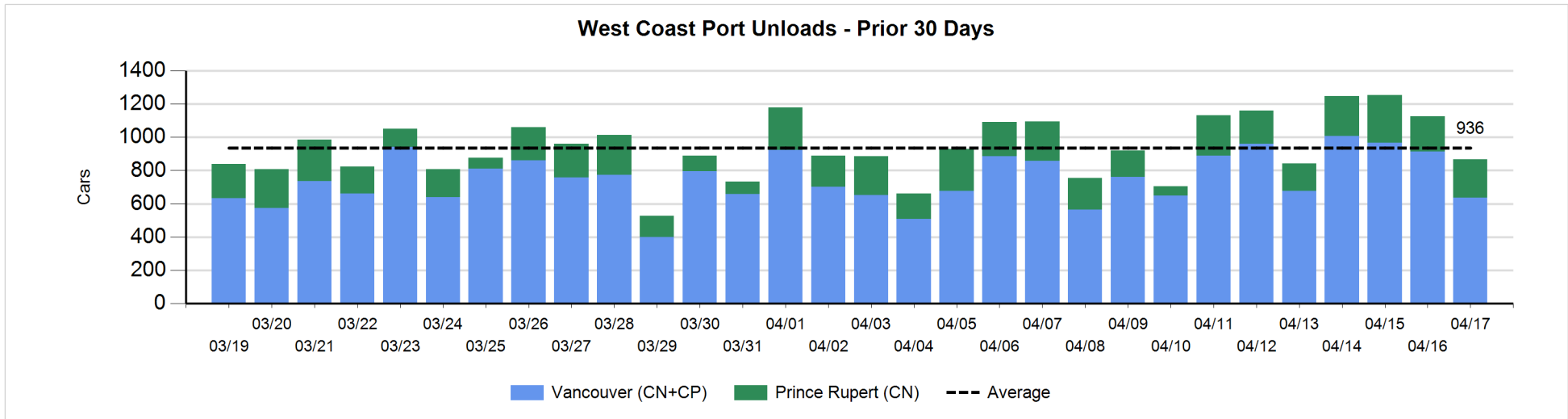
Change in Loads Not Moving 48 Hours or More - 4/17/2019

	E Canada	Prince Rupert	Thunder Bay	USA/MEX	Vancouver	Total
CN						
Origin		-1	4	24	56	83
Enroute	-7	-95		6	-293	-389
Destination	-10		8	14	-24	-12
	-17	-96	12	44	-261	-318
CP						
Origin	10		25	-4	282	313
Enroute	0		0	0	-105	-105
Destination			89		18	107
	10		114	-4	195	315
US Rail / Short Line						
Origin						
Enroute				-2		-2
Destination				-6	10	4
				-8	10	2



Port Unloads - 4/17/2019

	Prince Rupert	Vancouver	West Coast Total	Thunder Bay	Total
CN	230	223	453	85	538
CP		413	413	235	648
	230	636	866	320	1,186



Port Terminal Status

Vancouver

Daily Activity for 4/17/2019

	Cars Arrived	Cars Received in Interchange	Cars Delivered in Interchange	Cars Placed for Unloading	Loads on Wheels at Destination As of 4/17/2019
CN	405	111	19	299	617
CP	526	19	114	427	627
SRY		3		7	23

Port Unloads

	04/17	04/16	Week To Date	Last Week
CN	223	326	984	2,435
CP	413	589	1,535	3,077
SRY	7	1	16	45

Age Profile of Loaded Cars Waiting Placement for Unloading

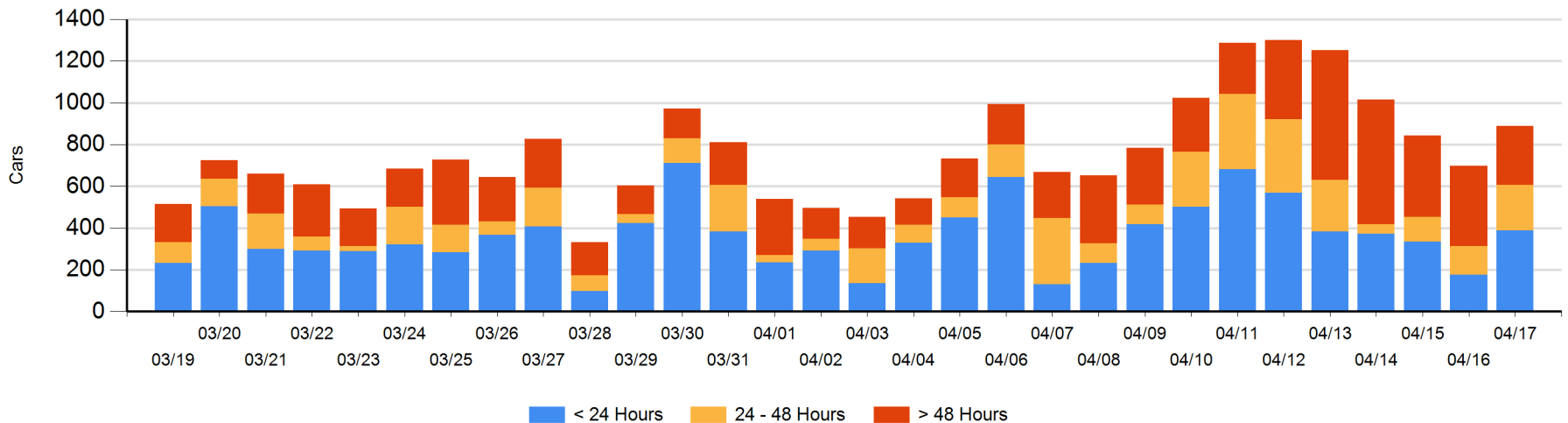
Today

	< 24 Hrs	24 - 48 Hrs	> 48-72 Hrs	> 72 Hrs	Total On Hand
CN	157	65	28	128	378
CP	231	153		127	511
SRY					0

Change in Last 24 Hours

	< 24 Hrs	24-48 Hrs	48 - 72 Hrs	> 72 Hrs
CN	125	37	-25	19
CP	87	45	-42	-55
SRY				

Loaded Cars on Hand Vancouver Waiting for Placement - Last 30 Days All Railways



Port Terminal Status

Prince Rupert

Daily Activity for 4/17/2019

	Cars Arrived	Cars Received in Interchange	Cars Delivered in Interchange	Cars Placed for Unloading	Loads on Wheels at Destination As of 4/17/2019
CN	99			59	59

Port Unloads

	04/17	04/16	Week To Date	Last Week
CN	230	212	727	1,246

Age Profile of Loaded Cars Waiting Placement for Unloading

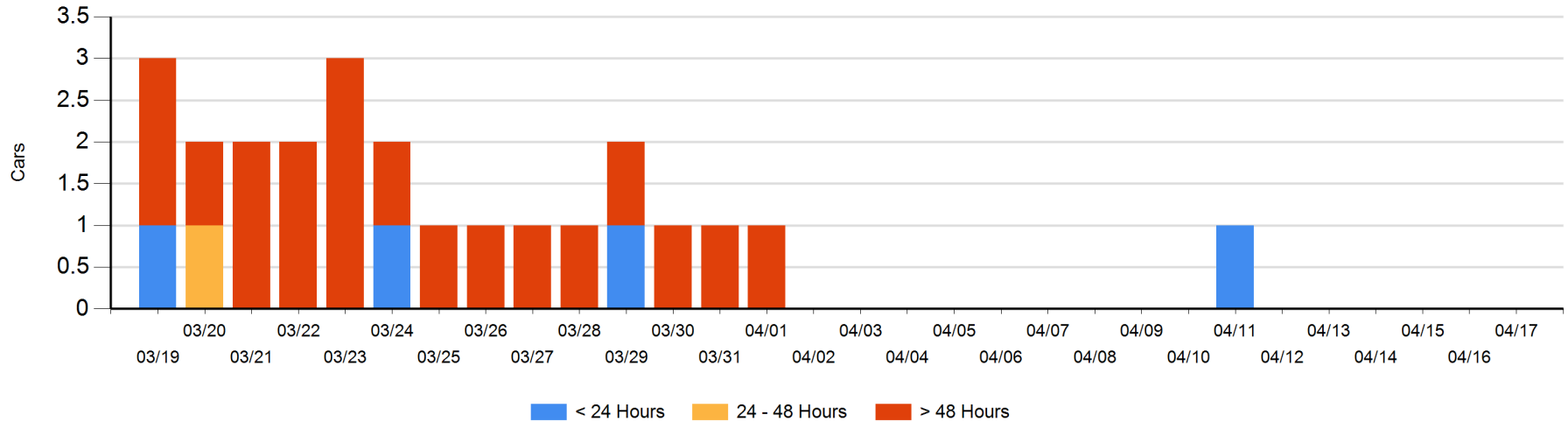
Today

	< 24 Hrs	24 - 48 Hrs	> 48-72 Hrs	> 72 Hrs	Total On Hand
CN					0

Change in Last 24 Hours

	< 24 Hrs	24-48 Hrs	48 - 72 Hrs	> 72 Hrs
CN				

Loaded Cars on Hand Prince Rupert Waiting for Placement - Last 30 Days All Railways



Port Terminal Status

Thunder Bay

Daily Activity for 4/17/2019

	Cars Arrived	Cars Received in Interchange	Cars Delivered in Interchange	Cars Placed for Unloading	Loads on Wheels at Destination As of 4/17/2019
CN	13				71
CP	333			219	501

Port Unloads

	04/17	04/16	Week To Date	Last Week
CN	85	193	300	503
CP	235	133	588	763

Age Profile of Loaded Cars Waiting Placement for Unloading

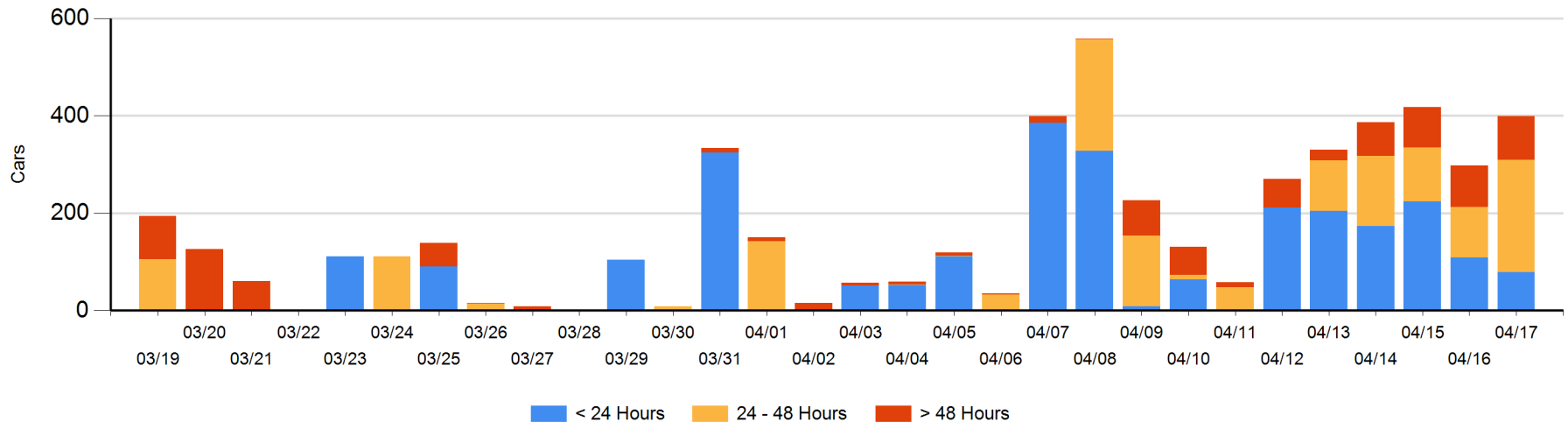
Today

	< 24 Hrs	24 - 48 Hrs	> 48-72 Hrs	> 72 Hrs	Total On Hand
CN	13	47			60
CP	66	183	28	62	339

Change in Last 24 Hours

	< 24 Hrs	24-48 Hrs	48 - 72 Hrs	> 72 Hrs
CN	-34	47		
CP	4	79	-18	23

Loaded Cars on Hand Thunder Bay Waiting for Placement - Last 30 Days All Railways



Measurement Definitions

Loads on Wheels	<p>Count of loaded rail cars including all rail cars that have been released loaded at origin and have not been reported by the railway as unloaded at destination.</p> <p>Counts include all rail cars (hopper cars and boxcars) moving within a pipeline.</p>
Loads Not Moving	<p>Loaded rail cars for which the railways have not reported a movement event for 48 hours or more whether the rail car is at origin, enroute or at destination.</p>
Port Unloads	<p>Count of rail cars reported by railways as unloaded at the western port destinations of Vancouver, Prince Rupert and Thunder Bay.</p> <p>Unload counts include all rail cars (hopper cars and boxcars) unloaded by all receivers including major port terminals, transloaders and other receivers.</p>
Cars Arrived	<p>Count of rail cars reported as arrived at the destination railway terminal.</p>
Cars Received in Interchange	<p>Count of rail cars received in interchange by each railway within a destination railway terminal. Interchange activity is tracked for the Vancouver and Thunder Bay pipelines as applicable.</p>
Cars Delivered in Interchange	<p>Count of rail cars delivered in interchange by each railway within a destination railway terminal. Interchange activity is tracked for the Vancouver and Thunder Bay pipelines as applicable.</p>
Cars Placed for Unloading	<p>Count of rail cars reported by the railways as placed loaded at the receiver's facility for unloading.</p>
Loads on Wheels at Destination	<p>Count of rail cars that remain under load within the destination railway terminal including rail cars that have been reported as placed for unloading but not yet reported as unloaded.</p>
Waiting Placement for Unloading	<p>Count of rail cars that have been reported as arrived at the destination railway terminal but not reported as placed for unloading by the railway.</p> <p>For the Ports of Vancouver, Prince Rupert and Thunder Bay the count of rail cars waiting placement for unloading is categorized by age – i.e. the elapsed time from arrival at destination to the current report date.</p>