

SPEED READ

- Loads on wheels increased significantly overnight, reflecting an increase in both CN and CP volumes. On a net basis, volumes increased due to higher traffic across all corridors other than Prince Rupert.
- Network fluidity deteriorated overnight, led by an increase in idle car counts on both CN and CP by 15% (+163) and 13% (+125), respectively. The total count of cars for 4+ days on both railways rose 22% (+150) overnight - presently at 834 cars.
- One day in Week 39 unloads now behind prior week's performance by more than 450 unloads, reflecting lower unloads across all three major ports - Vancouver, Thunder Bay and Prince Rupert.

Loads on Wheels

- Loads on wheels increased for the third consecutive day, up 12% (+1,309) overnight, due to higher traffic on both CN and CP - combined total at 11,981, the highest seen in the last 30 days, and 14% above the trailing 30-day average.
- On a net basis, the increase in loads on wheels reflects higher traffic across all corridors other than Prince Rupert.
- CN volumes rose 2% (+120) overnight and have now increased for the third consecutive day, with higher traffic in the Vancouver, USA/MEX and E. Canada corridors offset by lower traffic in the Thunder Bay and Prince Rupert corridors. System wide CN loads on wheels now at 6,025 and 5% above the trailing 30-day average.
- CP volumes increased for the third consecutive day, up 26% (+1,193) overnight, driven by an increase in volumes across all corridors other than E. Canada. CP system wide loads on wheels currently at 5,820, the highest seen in the last 30 days, and 30% above the trailing 30-day average.
- Vancouver now at 6,628, increased significantly by 11% (+630) overnight, now 7% above the trailing 30-day average.
- The Prince Rupert pipeline currently at 1,854, decreased 4% (-73) overnight, and 21% above the trailing 30-day average.
- Thunder Bay volumes gained significantly by 26% (+369) overnight - currently at 1,811, the highest seen in the last 30 days, and 86% above the trailing 30-day average, with 70% of traffic moving on CP.

Hopper Car Rationing

- CN rationed 231 hopper cars in week 37.

Loads Not Moving

- **The count of cars not moving for 48+ hours increased 14% (+288) overnight and have now increased for the third consecutive day, marking higher counts on both CN and CP. Idle car counts now at 2,350 and 37% above the trailing 30-day average.**
- CN
 - **The count of idle cars for 48+ hours increased for the third consecutive day, up 15% (+163) overnight - presently at 1,259 cars.**
 - The number of cars idle for 4+ days rose for the third consecutive day, up 4% (+13) overnight - currently at 358 cars.
 - The count of cars not moving for 7+ days gained marginally by 1% (+2) overnight and have now increased for the third consecutive day - currently at 155 cars.
 - Vancouver represents 49% of all idle cars.
 - In total 19% of all idle cars are dwelling at origin locations.
- CP
 - **CP idle car counts for 48+ hours increased 13% (+125) overnight - now at 1,091 cars.**
 - The number of cars idle for 4+ days gained 40% (+137) overnight - presently at 476 cars.

- The number of cars idle for 7+ days decreased slightly by 1% (-3) overnight and have now decreased for the third consecutive day - now at 205 cars.
- Vancouver accounts for 74% of all idle cars.
- In total 13% of all idle cars are dwelling at origin locations.

Port Performance

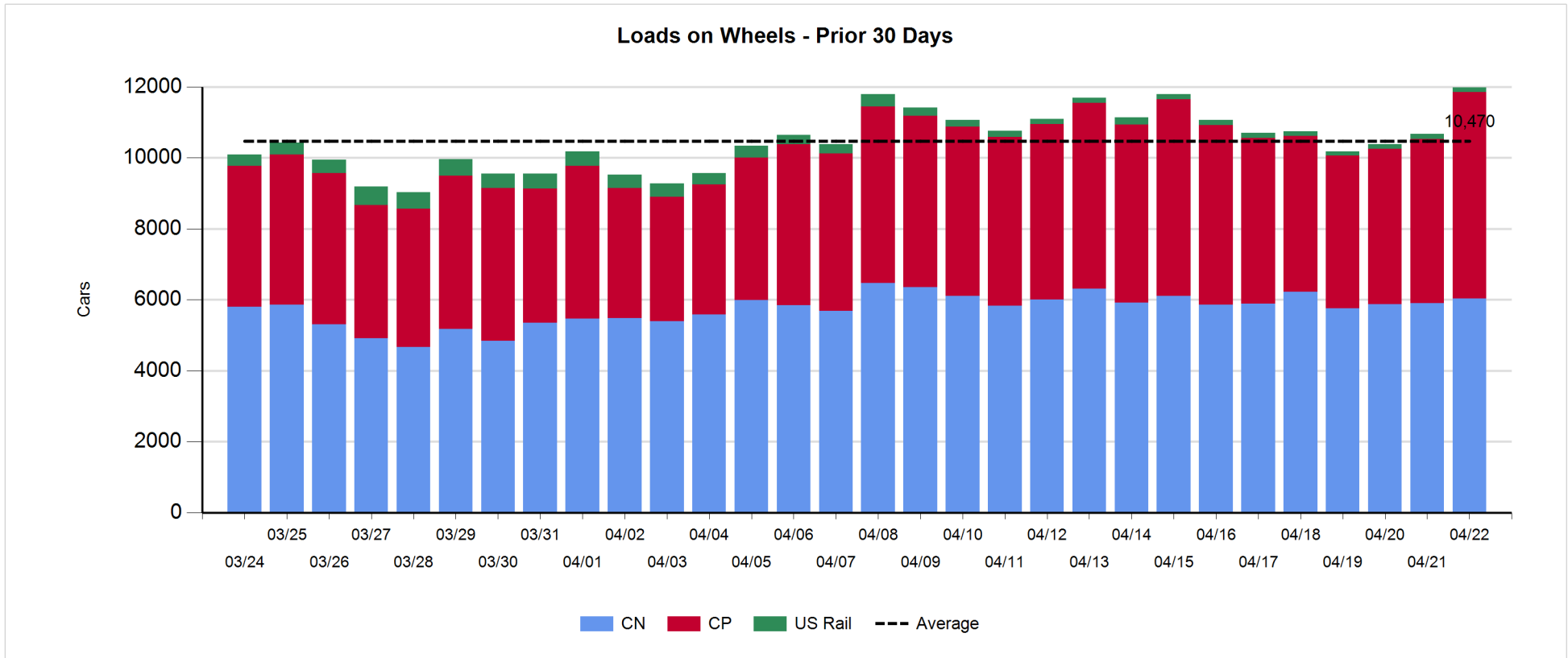
- CN and CP reported a total of 1,023 cars unloaded at the three major ports, now 5% below the trailing 30-day average. One day in Week 39 unloads now behind last week's pace by more than 450 unloads, reflecting lower unloads across all three major ports - Vancouver, Thunder Bay and Prince Rupert.
- Vancouver
 - 742 unloads reported by CN and CP at the Port of Vancouver; CN - 380 and CP - 362. One day in Week 39 unloads are tracking behind last week's performance by nearly 250 unloads.
 - There are 1,700 cars on site at Vancouver with more than 550 cars arriving at the port in the last 24 hours.
 - CN and CP have more than 1,600 cars in British Columbia en route to Vancouver, with 850 cars at Kamloops and west, and 54% of traffic moving on CP.
- Prince Rupert
 - Prince Rupert reported 189 unloads, now behind last week's unloads after one day by 100 unloads.
 - Loads on wheels now above 1,000 cars - currently at 1,854 cars.
 - There are more than 800 cars west of Jasper en route to Prince Rupert.
 - There are more than 400 cars on site at Prince Rupert with zero cars arriving at the port in the last 24 hours.
- Thunder Bay
 - 92 unloads were reported at Thunder Bay yesterday. One day in Week 39 unloads are tracking behind last week's pace by 150 unloads.
 - There are fewer than 900 cars on site at Thunder Bay with 200 cars arriving at the port in the prior 24 hours.
 - There are more than 100 cars en route to Thunder Bay from Winnipeg and east.

Daily Loads on Wheels - 4/22/2019

	E Canada	Prince Rupert	Thunder Bay	USA/MEX	Vancouver	Total
CN	675	1,854	540	330	2,626	6,025
CP	163		1,271	425	3,961	5,820
Short Line	6				41	47
US Rail				89		89
	844	1,854	1,811	844	6,628	11,981

Change in Loads on Wheels - Prior 24 Hours

	E Canada	Prince Rupert	Thunder Bay	USA/MEX	Vancouver	Total
CN	49	-73	-91	52	183	120
CP	-18		460	302	449	1,193
Short Line	6				-2	4
US Rail				-8		-8
	37	-73	369	346	630	1,309



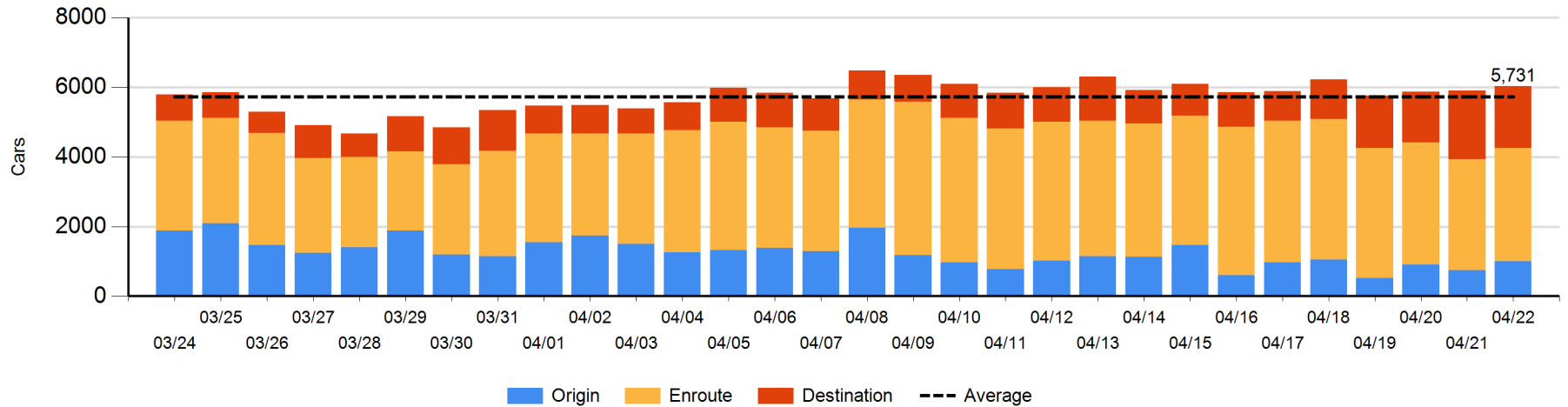
Daily Loads on Wheels By Pipeline Location - 4/22/2019

	E Canada	Prince Rupert	Thunder Bay	USA/MEX	Vancouver	Total
CN						
Origin	103	109		4	781	997
Enroute	278	1,321	204	297	1,157	3,257
Destination	294	424	336	29	688	1,771
	675	1,854	540	330	2,626	6,025
CP						
Origin	1		462	310	1,035	1,808
Enroute	144		263	110	1,951	2,468
Destination	18		546	5	975	1,544
	163		1,271	425	3,961	5,820
US Rail / Short Line						
Origin						
Enroute				63		63
Destination	6			26	41	73
	6			89	41	136

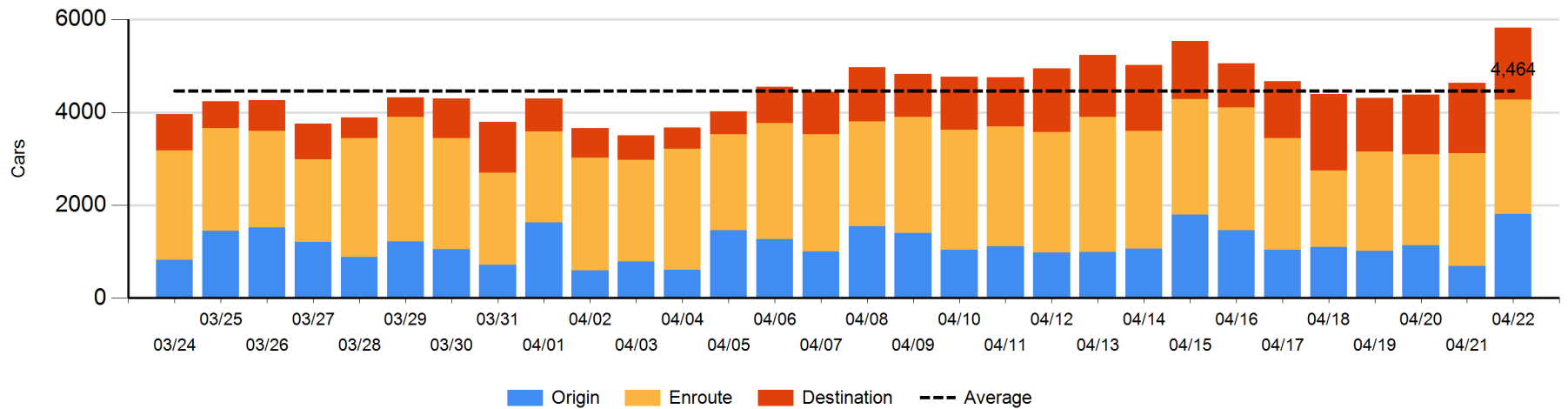
Change in Daily Loads on Wheels By Pipeline Location - Prior 24 Hours

	E Canada	Prince Rupert	Thunder Bay	USA/MEX	Vancouver	Total
CN						
Origin	103	-100	-199	3	448	255
Enroute	-163	216	189	52	-236	58
Destination	109	-189	-81	-3	-29	-193
	49	-73	-91	52	183	120
CP						
Origin	-8		315	210	597	1,114
Enroute	-5		-35	98	-9	49
Destination	-5		180	-6	-139	30
	-18		460	302	449	1,193
US Rail / Short Line						
Origin						
Enroute				-2		-2
Destination	6			-6	-2	-2
	6			-8	-2	-4

CN Loads on Wheels by Pipeline Location - 4/22/2019



CP Loads on Wheels by Pipeline Location - 4/22/2019

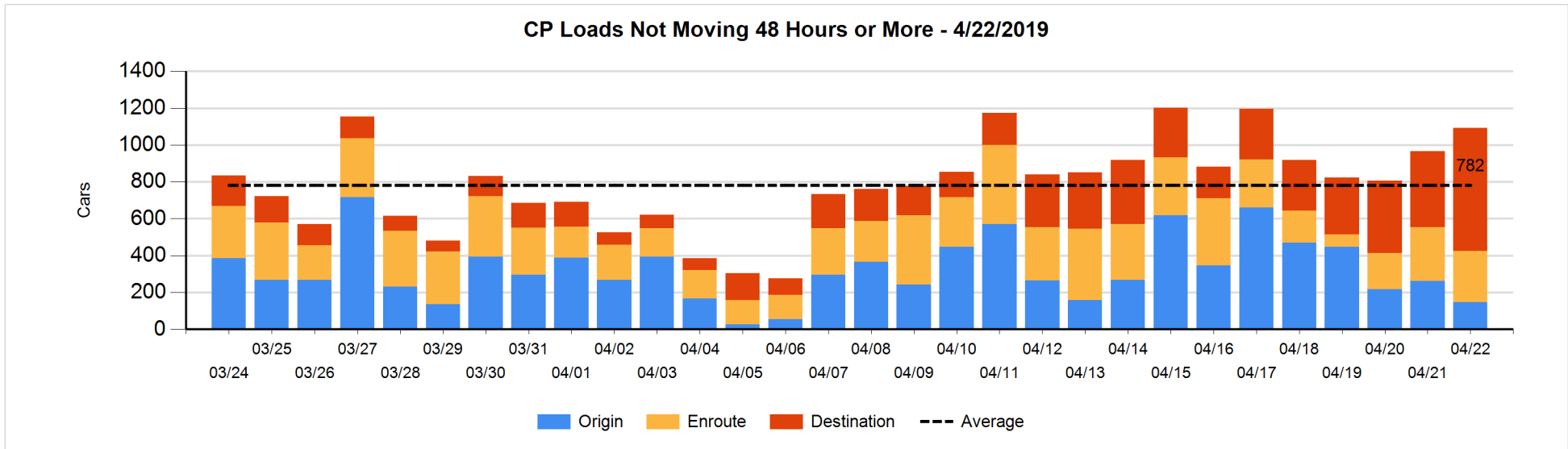
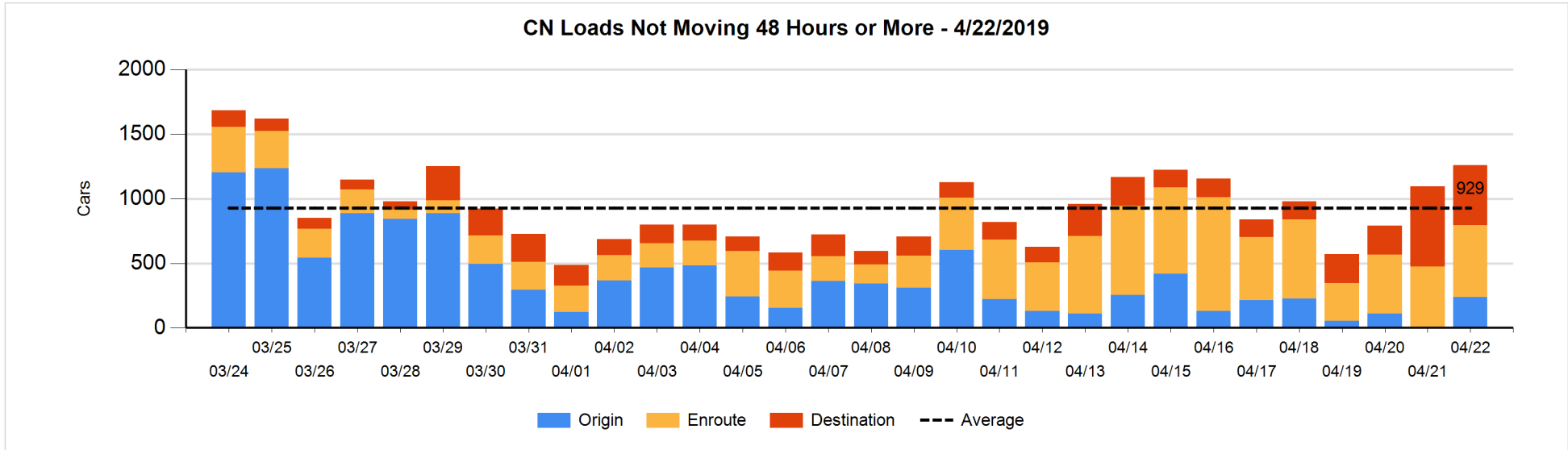


Loads Not Moving 48 Hours or More - 4/22/2019

	E Canada	Prince Rupert	Thunder Bay	USA/MEX	Vancouver	Total
CN						
Origin		1		1	236	238
Enroute	181	90	1	41	245	558
Destination	122	106	74	28	133	463
	303	197	75	70	614	1259
CP						
Origin			1		146	147
Enroute	1		2	5	271	279
Destination	6		265	5	389	665
	7		268	10	806	1091
US Rail / Short Line						
Origin						
Enroute				36		36
Destination				18	21	39
				54	21	75

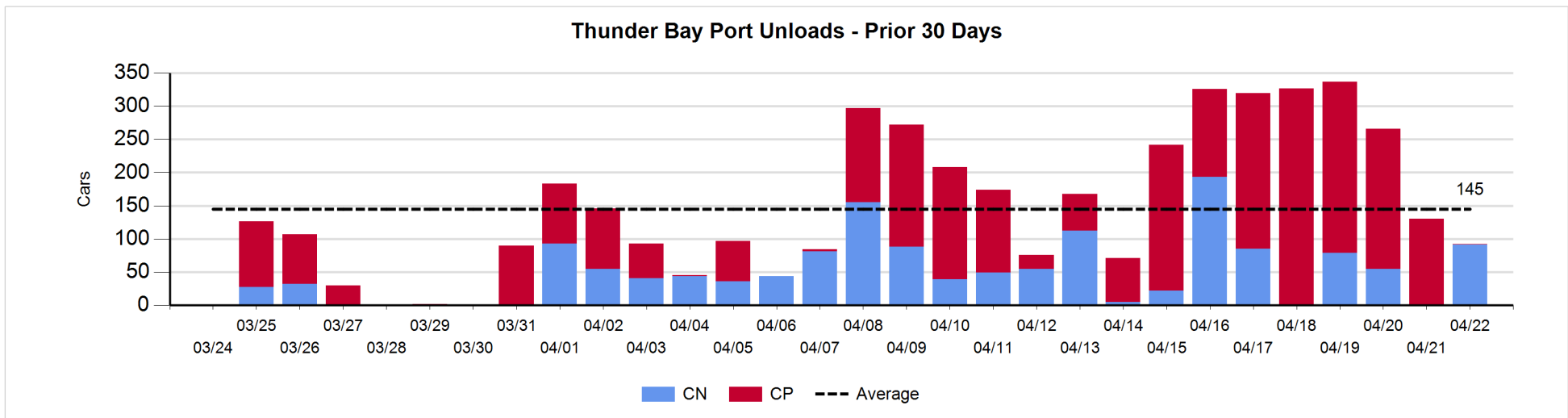
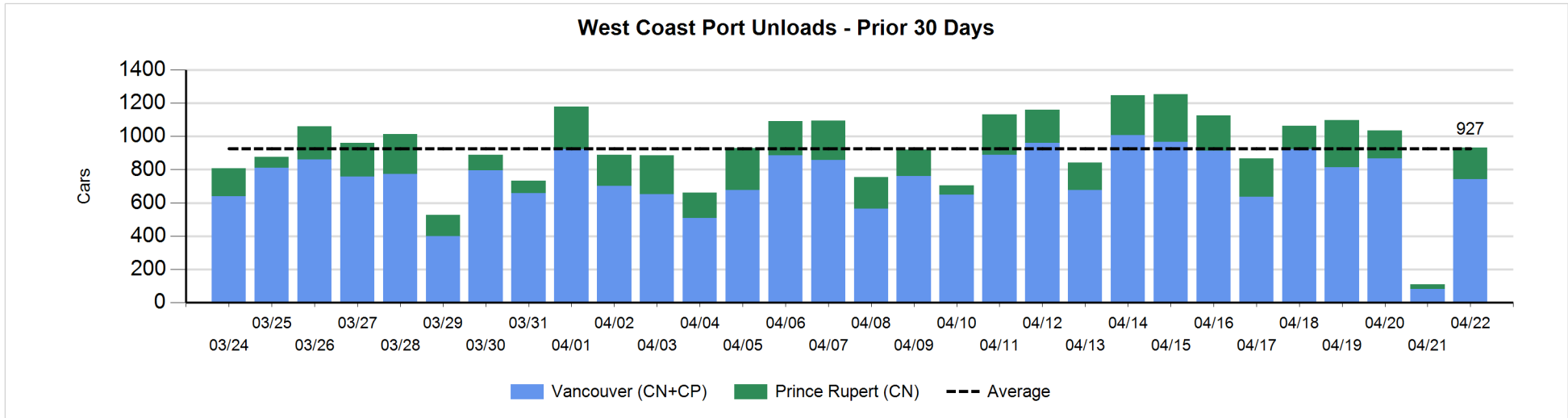
Change in Loads Not Moving 48 Hours or More - 4/22/2019

	E Canada	Prince Rupert	Thunder Bay	USA/MEX	Vancouver	Total
CN						
Origin		0		0	236	236
Enroute	16	51	0	1	18	86
Destination	47	-95	8	-2	-117	-159
	63	-44	8	-1	137	163
CP						
Origin			0		-116	-116
Enroute	-4		-1	-4	-3	-12
Destination	-17		109	-4	165	253
	-21		108	-8	46	125
US Rail / Short Line						
Origin						
Enroute				0		0
Destination				-5	-3	-8
				-5	-3	-8



Port Unloads - 4/22/2019

	Prince Rupert	Vancouver	West Coast Total	Thunder Bay	Total
CN	189	380	569	91	660
CP		362	362	1	363
	189	742	931	92	1,023



Port Terminal Status

Vancouver

Daily Activity for 4/22/2019

	Cars Arrived	Cars Received in Interchange	Cars Delivered in Interchange	Cars Placed for Unloading	Loads on Wheels at Destination As of 4/22/2019
CN	332	47	101	252	688
CP	240	101	47	262	975
SRY				5	41

Port Unloads

	04/22	04/21	Week To Date	Last Week
CN	380	53	380	2,283
CP	362	28	362	2,920
SRY	2		2	27

Age Profile of Loaded Cars Waiting Placement for Unloading

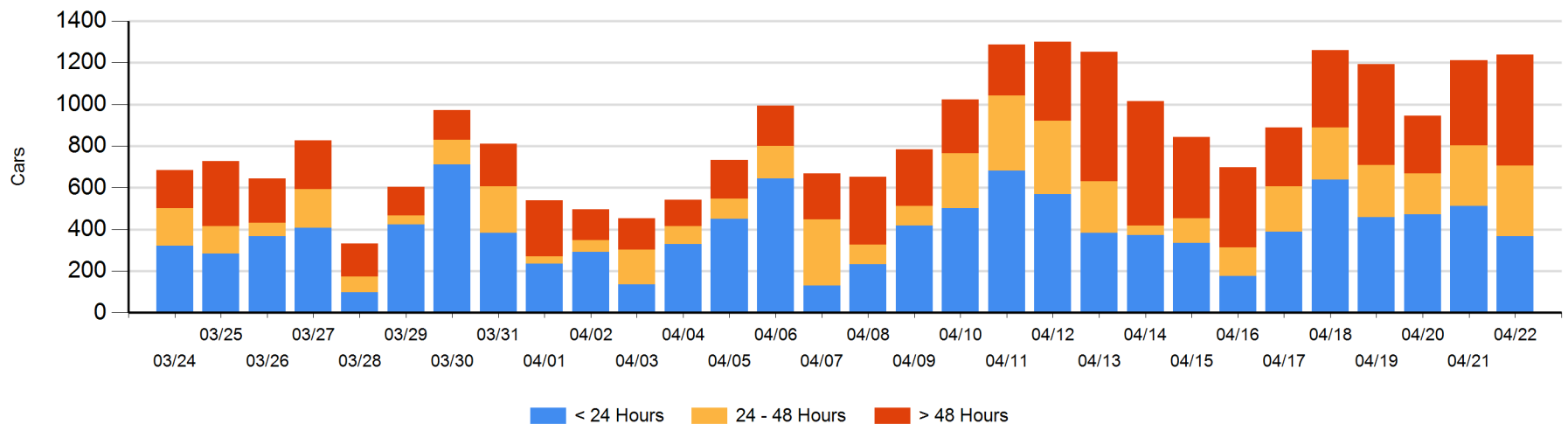
Today

	< 24 Hrs	24 - 48 Hrs	> 48-72 Hrs	> 72 Hrs	Total On Hand
CN	234	88	5	170	497
CP	132	253	209	148	742
SRY					0

Change in Last 24 Hours

	< 24 Hrs	24-48 Hrs	48 - 72 Hrs	> 72 Hrs
CN	94	28	-141	100
CP	-240	23	171	-7
SRY				

Loaded Cars on Hand Vancouver Waiting for Placement - Last 30 Days All Railways



Port Terminal Status

Prince Rupert

Daily Activity for 4/22/2019

	Cars Arrived	Cars Received in Interchange	Cars Delivered in Interchange	Cars Placed for Unloading	Loads on Wheels at Destination As of 4/22/2019
CN					424

Port Unloads

	04/22	04/21	Week To Date	Last Week
CN	189	27	189	1,348

Age Profile of Loaded Cars Waiting Placement for Unloading

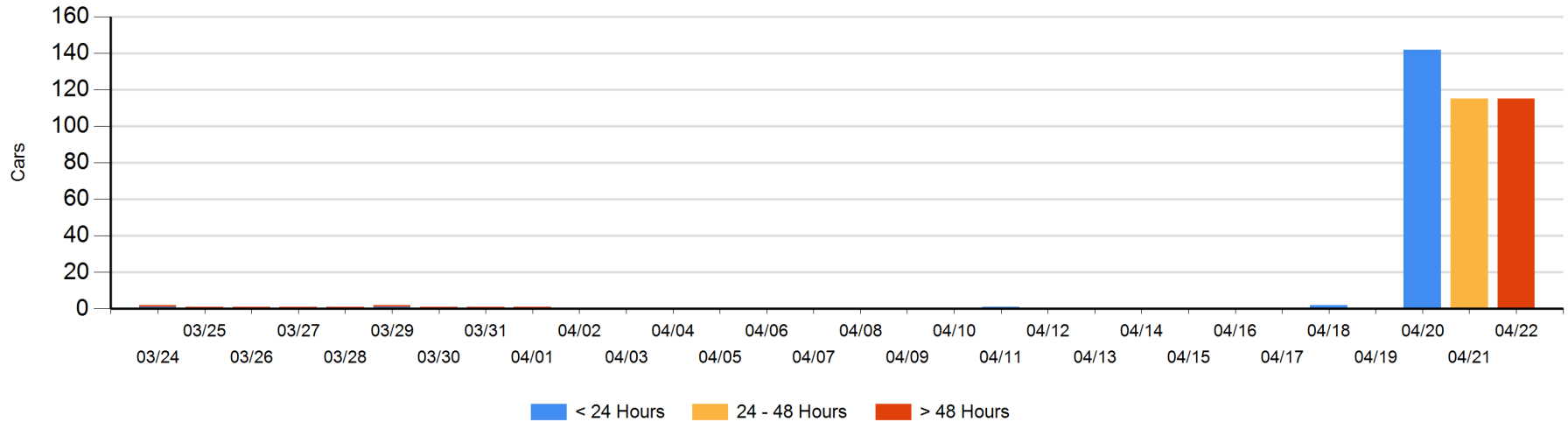
Today

	< 24 Hrs	24 - 48 Hrs	> 48-72 Hrs	> 72 Hrs	Total On Hand
CN			115		115

Change in Last 24 Hours

	< 24 Hrs	24-48 Hrs	48 - 72 Hrs	> 72 Hrs
CN		-115	115	

Loaded Cars on Hand Prince Rupert Waiting for Placement - Last 30 Days All Railways



Port Terminal Status

Thunder Bay

Daily Activity for 4/22/2019

	Cars Arrived	Cars Received in Interchange	Cars Delivered in Interchange	Cars Placed for Unloading	Loads on Wheels at Destination As of 4/22/2019
CN	10			91	336
CP	181			59	546

Port Unloads

	04/22	04/21	Week To Date	Last Week
CN	91	1	91	436
CP	1	129	1	1,512

Age Profile of Loaded Cars Waiting Placement for Unloading

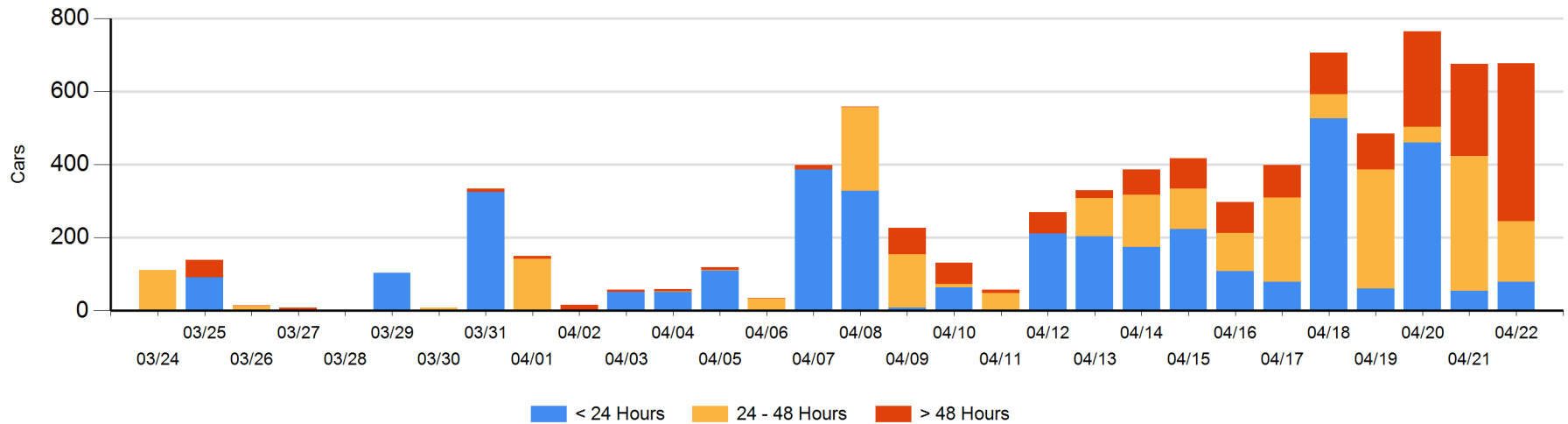
Today

	< 24 Hrs	24 - 48 Hrs	> 48-72 Hrs	> 72 Hrs	Total On Hand
CN	10	53	148	29	240
CP	69	113	106	149	437

Change in Last 24 Hours

	< 24 Hrs	24-48 Hrs	48 - 72 Hrs	> 72 Hrs
CN	-43	-152	105	9
CP	68	-52	106	-39

Loaded Cars on Hand Thunder Bay Waiting for Placement - Last 30 Days All Railways



Measurement Definitions

Loads on Wheels	<p>Count of loaded rail cars including all rail cars that have been released loaded at origin and have not been reported by the railway as unloaded at destination.</p> <p>Counts include all rail cars (hopper cars and boxcars) moving within a pipeline.</p>
Loads Not Moving	<p>Loaded rail cars for which the railways have not reported a movement event for 48 hours or more whether the rail car is at origin, enroute or at destination.</p>
Port Unloads	<p>Count of rail cars reported by railways as unloaded at the western port destinations of Vancouver, Prince Rupert and Thunder Bay.</p> <p>Unload counts include all rail cars (hopper cars and boxcars) unloaded by all receivers including major port terminals, transloaders and other receivers.</p>
Cars Arrived	<p>Count of rail cars reported as arrived at the destination railway terminal.</p>
Cars Received in Interchange	<p>Count of rail cars received in interchange by each railway within a destination railway terminal. Interchange activity is tracked for the Vancouver and Thunder Bay pipelines as applicable.</p>
Cars Delivered in Interchange	<p>Count of rail cars delivered in interchange by each railway within a destination railway terminal. Interchange activity is tracked for the Vancouver and Thunder Bay pipelines as applicable.</p>
Cars Placed for Unloading	<p>Count of rail cars reported by the railways as placed loaded at the receiver's facility for unloading.</p>
Loads on Wheels at Destination	<p>Count of rail cars that remain under load within the destination railway terminal including rail cars that have been reported as placed for unloading but not yet reported as unloaded.</p>
Waiting Placement for Unloading	<p>Count of rail cars that have been reported as arrived at the destination railway terminal but not reported as placed for unloading by the railway.</p> <p>For the Ports of Vancouver, Prince Rupert and Thunder Bay the count of rail cars waiting placement for unloading is categorized by age – i.e. the elapsed time from arrival at destination to the current report date.</p>