

SPEED READ

- Loads on wheels decreased overnight, reflecting a decline in both CN and CP volumes. On a net basis, volumes declined due to reduced traffic across all corridors other than E. Canada.
- Network fluidity improved overnight, led by a decline in idle car counts on both CN and CP by 30% (-404) and 22% (-223), respectively. The total count of cars for 4+ days on both railways increased marginally by 1% (+10) overnight - now at 926 cars.
- Four days in Week 39 unloads now behind prior week's performance by nearly 200 unloads, marking reduced unloads at Vancouver and Thunder Bay offset by improved week over week performance at Prince Rupert.

Loads on Wheels

- Loads on wheels decreased 4% (-516) overnight, due to lower traffic on both CN and CP - combined total at 11,747 and 10% above the trailing 30-day average.
- On a net basis, the decline in loads on wheels indicates reduced traffic across all corridors other than E. Canada.
- CN volumes decreased 3% (-196) overnight, with reduced volumes in the Thunder Bay, USA/MEX and Prince Rupert corridors offset by higher traffic in the Vancouver and E. Canada corridors. System wide CN loads on wheels now at 6,433 and 10% above the trailing 30-day average.
- CP volumes decreased 7% (-371) overnight, driven by a decline in traffic across all corridors - Vancouver, Thunder Bay, USA/MEX and E. Canada. CP system wide loads on wheels now at 5,146 and 12% above the trailing 30-day average.
- Vancouver currently at 7,013, decreased marginally by 1% (-103) overnight, now 10% above the trailing 30-day average.
- The Prince Rupert pipeline currently at 1,831, decreased 2% (-42) overnight, and 20% above the trailing 30-day average.
- Thunder Bay volumes declined significantly by 19% (-334) overnight - presently at 1,388 and 27% above the trailing 30-day average, with 72% of traffic moving on CP.

Hopper Car Rationing

- CN rationed 231 hopper cars in week 37.

Loads Not Moving

- **The count of cars not moving for 48+ hours decreased 26% (-627) overnight, reflecting reduced counts on both CN and CP. Idle car counts currently at 1,752 and 2% above the trailing 30-day average.**
- CN
 - **The count of idle cars for 48+ hours declined 30% (-404) overnight - now at 943 cars.**
 - The number of cars idle for 4+ days increased for the sixth consecutive day, up 13% (+73) overnight - currently at 652 cars.
 - The count of cars not moving for 7+ days declined 31% (-48) overnight - currently at 108 cars.
 - Vancouver represents 76% of all idle cars.
 - In total 33% of all idle cars are dwelling at origin locations.
- CP
 - **CP idle car counts for 48+ hours decreased 22% (-223) overnight - now at 809 cars.**
 - The number of cars idle for 4+ days declined for the third consecutive day, down 19% (-63) overnight - currently at 274 cars.
 - The number of cars idle for 7+ days increased significantly by 73% (+51) overnight - now at 121 cars.

- Vancouver accounts for 82% of all idle cars.
- In total 29% of all idle cars are dwelling at origin locations.

Port Performance

- CN and CP reported a total of 1,398 cars unloaded at the three major ports, now 25% above the trailing 30-day average. Four days in Week 39 unloads now behind last week's pace by less than 200 unloads, marking reduced unloads at Vancouver and Thunder Bay offset by higher unloads at Prince Rupert.
- Vancouver
 - 810 unloads reported by CN and CP at the Port of Vancouver; CN - 494 and CP - 316. Four days in Week 39 unloads are tracking behind last week's performance by fewer than 200 unloads.
 - There are nearly 1,250 cars on site at Vancouver with 800 cars arriving at the port in the last 24 hours.
 - CN and CP have fewer than 1,950 cars in British Columbia en route to Vancouver, with more than 1,000 cars at Kamloops and west, and 51% of traffic moving on CP.
- Prince Rupert
 - Prince Rupert reported 192 unloads, now ahead of last week's unloads after four days by more than 50 unloads.
 - Loads on wheels now above 1,000 cars - presently at 1,831 cars.
 - There are 850 cars west of Jasper en route to Prince Rupert.
 - There are more than 350 cars on site at Prince Rupert with more than 150 cars arriving at the port in the last 24 hours.
- Thunder Bay
 - 396 unloads, the highest seen in the last 30 days, were reported at Thunder Bay yesterday. Four days in Week 39 unloads are tracking behind last week's pace by more than 50 unloads.
 - There are 500 cars on site at Thunder Bay with 1 car arriving at the port in the prior 24 hours.
 - There are nearly 500 cars en route to Thunder Bay from Winnipeg and east.

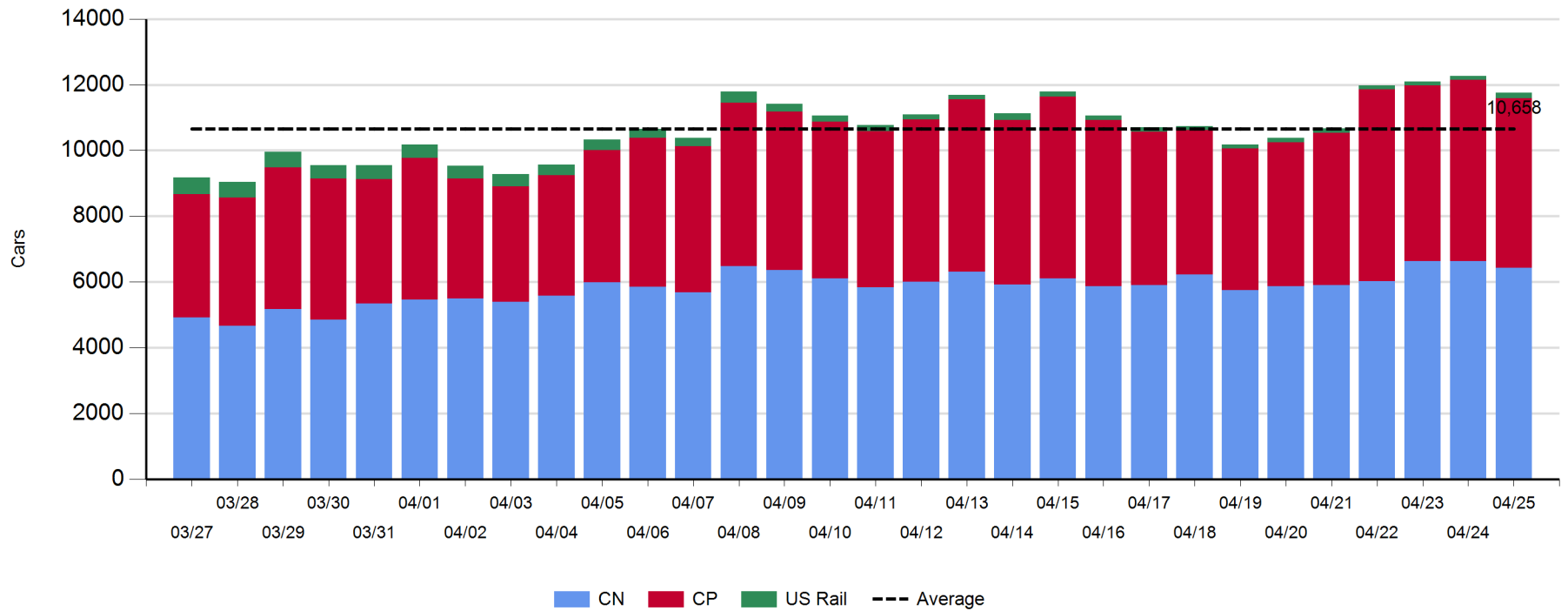
Daily Loads on Wheels - 4/25/2019

	E Canada	Prince Rupert	Thunder Bay	USA/MEX	Vancouver	Total
CN	571	1,831	387	267	3,377	6,433
CP	119		1,001	427	3,599	5,146
Short Line					37	37
US Rail				131		131
	690	1,831	1,388	825	7,013	11,747

Change in Loads on Wheels - Prior 24 Hours

	E Canada	Prince Rupert	Thunder Bay	USA/MEX	Vancouver	Total
CN	51	-42	-213	-48	56	-196
CP	-41		-121	-39	-170	-371
Short Line					11	11
US Rail				40		40
	10	-42	-334	-47	-103	-516

Loads on Wheels - Prior 30 Days

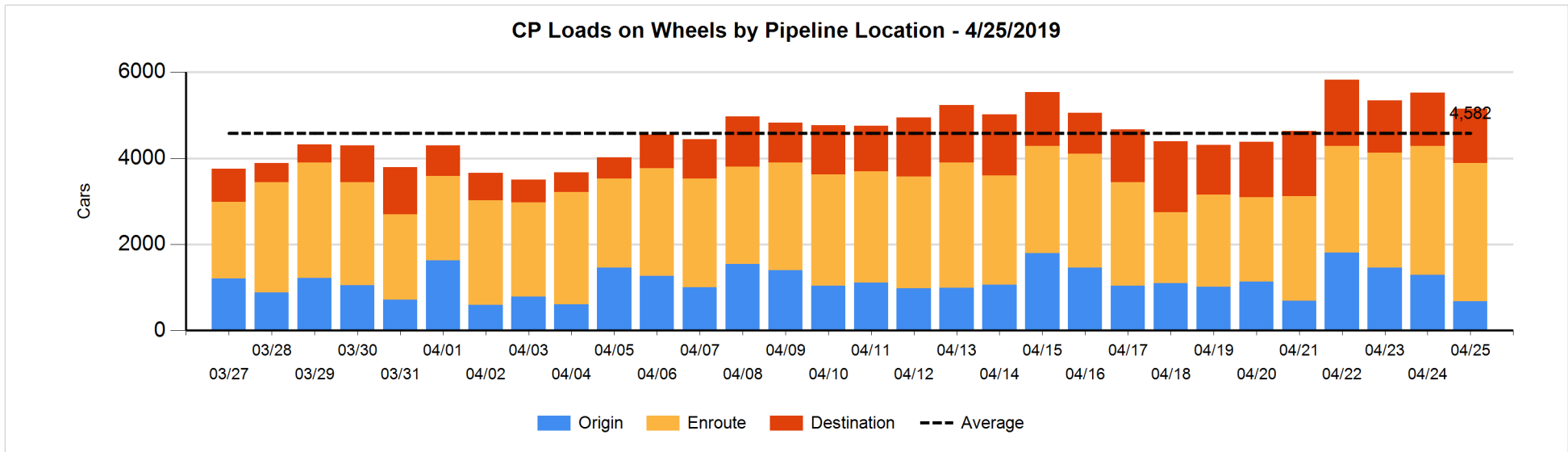
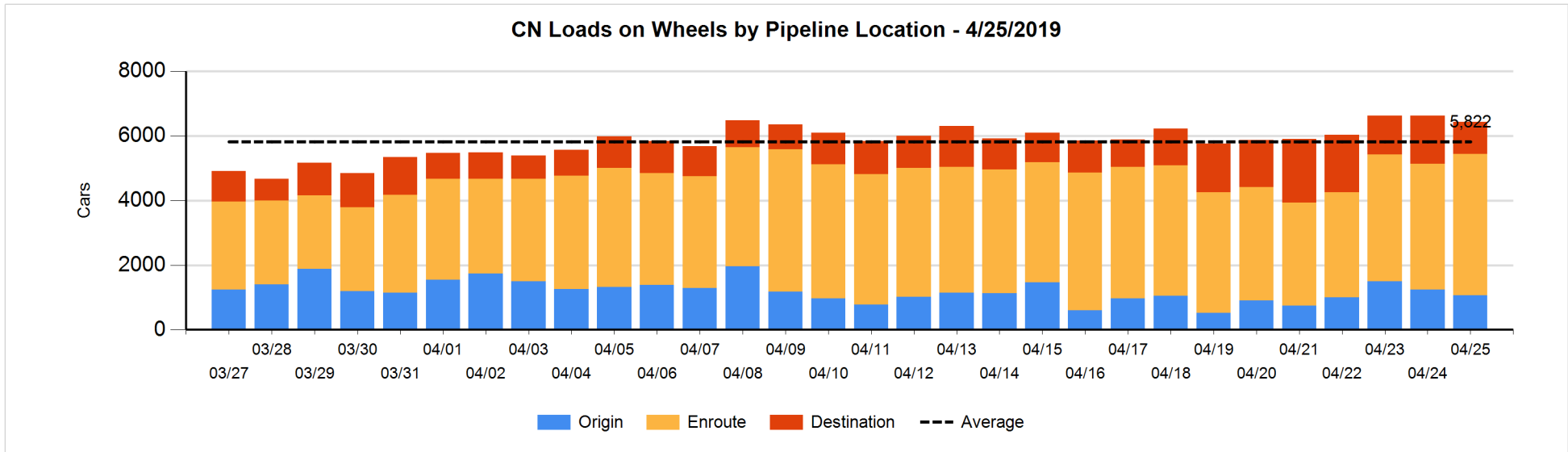


Daily Loads on Wheels By Pipeline Location - 4/25/2019

	E Canada	Prince Rupert	Thunder Bay	USA/MEX	Vancouver	Total
CN						
Origin	112	264		17	667	1,060
Enroute	408	1,204	366	226	2,168	4,372
Destination	51	363	21	24	542	1,001
	571	1,831	387	267	3,377	6,433
CP						
Origin	16		122	2	534	674
Enroute	29		409	364	2,411	3,213
Destination	74		470	61	654	1,259
	119		1,001	427	3,599	5,146
US Rail / Short Line						
Origin						
Enroute				49		49
Destination				82	37	119
				131	37	168

Change in Daily Loads on Wheels By Pipeline Location - Prior 24 Hours

	E Canada	Prince Rupert	Thunder Bay	USA/MEX	Vancouver	Total
CN						
Origin	85	2	-256	13	-23	-179
Enroute	57	-22	256	0	188	479
Destination	-91	-22	-213	-61	-109	-496
	51	-42	-213	-48	56	-196
CP						
Origin	0		-108	2	-505	-611
Enroute	-112		169	-75	226	208
Destination	71		-182	34	109	32
	-41		-121	-39	-170	-371
US Rail / Short Line						
Origin						
Enroute				2		2
Destination				38	11	49
				40	11	51

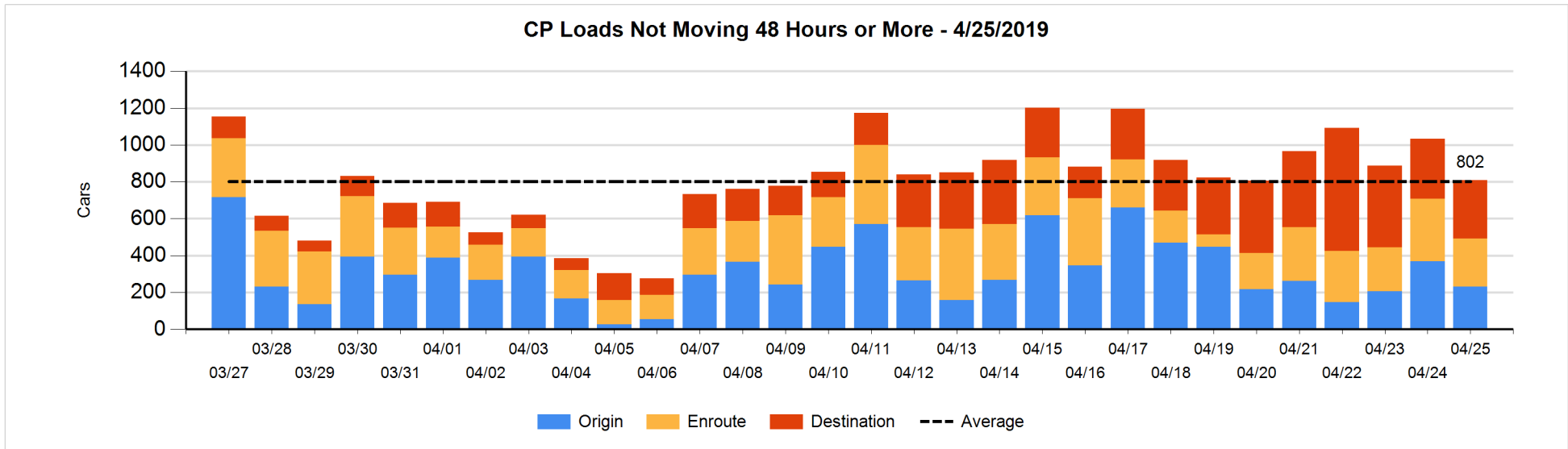
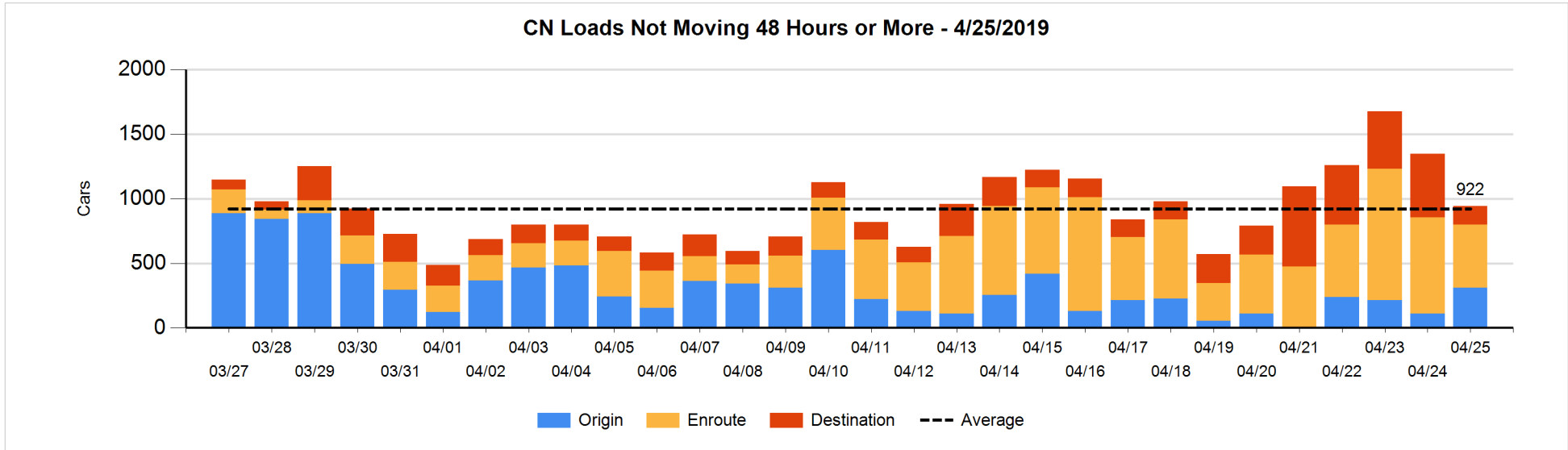


Loads Not Moving 48 Hours or More - 4/25/2019

	E Canada	Prince Rupert	Thunder Bay	USA/MEX	Vancouver	Total
CN						
Origin		1			311	312
Enroute	110	11	9	37	321	488
Destination	27	4	19	7	86	143
	137	16	28	44	718	943
CP						
Origin			6		225	231
Enroute				1	259	260
Destination	2		139	1	176	318
	2		145	2	660	809
US Rail / Short Line						
Origin						
Enroute				28		28
Destination				29	9	38
				57	9	66

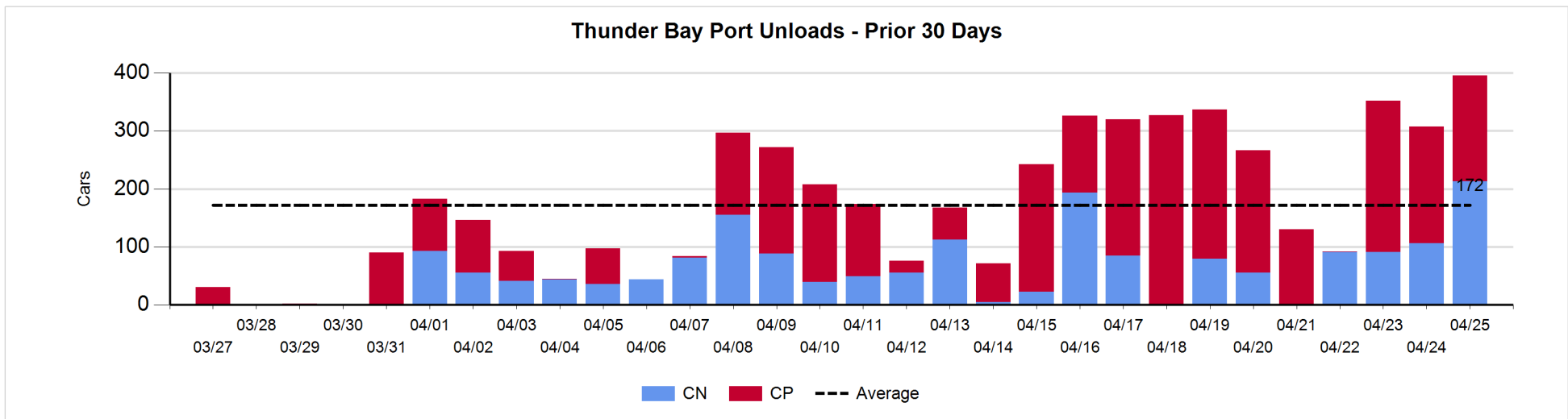
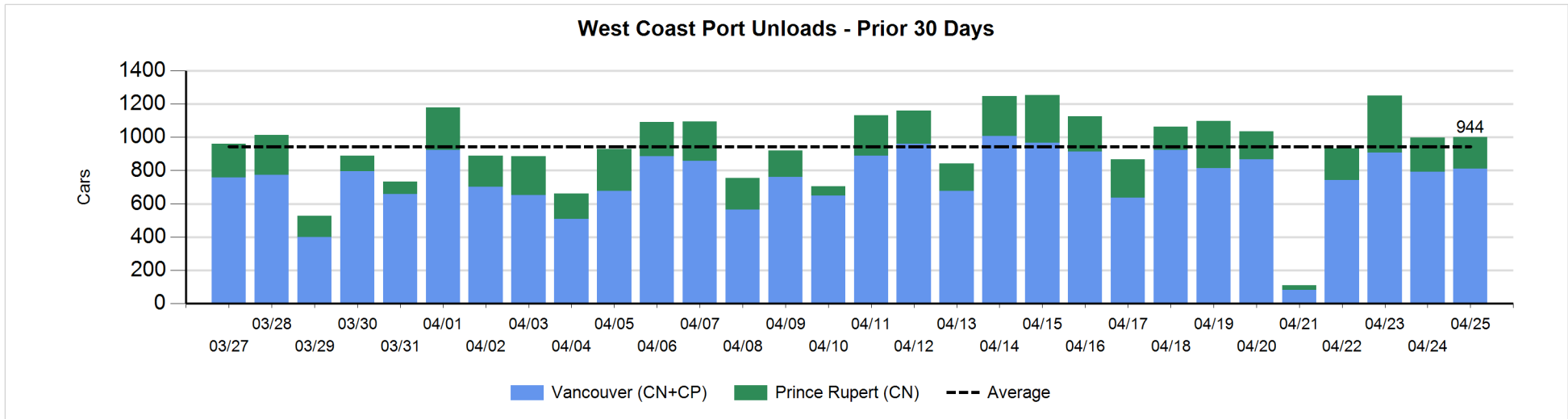
Change in Loads Not Moving 48 Hours or More - 4/25/2019

	E Canada	Prince Rupert	Thunder Bay	USA/MEX	Vancouver	Total
CN						
Origin		0		-1	203	202
Enroute	-2	-257	8	-1	-4	-256
Destination	-62	-40	-127	-15	-106	-350
	-64	-297	-119	-17	93	-404
CP						
Origin			-45		-93	-138
Enroute	-2		-1	1	-76	-78
Destination	0		-4	0	-3	-7
	-2		-50	1	-172	-223
US Rail / Short Line						
Origin						
Enroute				-4		-4
Destination				7	-5	2
				3	-5	-2



Port Unloads - 4/25/2019

	Prince Rupert	Vancouver	West Coast Total	Thunder Bay	Total
CN	192	494	686	213	899
CP		316	316	183	499
	192	810	1,002	396	1,398



Port Terminal Status

Vancouver

Daily Activity for 4/25/2019

	Cars Arrived	Cars Received in Interchange	Cars Delivered in Interchange	Cars Placed for Unloading	Loads on Wheels at Destination As of 4/25/2019
CN	55	215	260	409	542
CP	746	227	215	356	654
SRY		33		8	37

Port Unloads

	04/25	04/24	Week To Date	Last Week
CN	494	347	1,514	2,283
CP	316	445	1,737	2,920
SRY	8	14	28	27

Age Profile of Loaded Cars Waiting Placement for Unloading

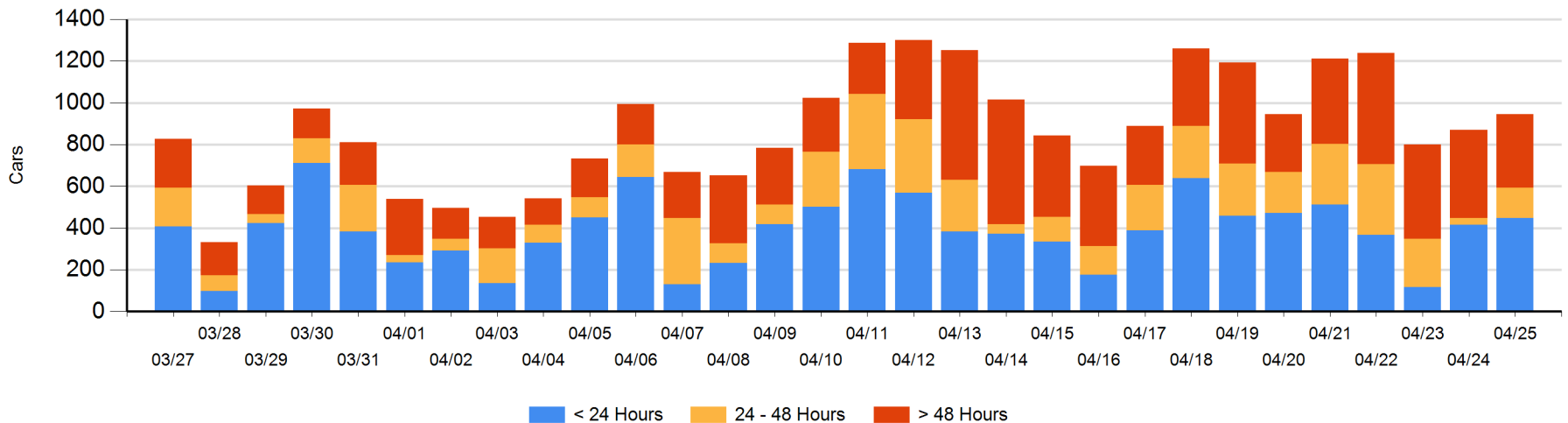
Today

	< 24 Hrs	24 - 48 Hrs	> 48-72 Hrs	> 72 Hrs	Total On Hand
CN	49	101	22	204	376
CP	400	43	2	125	570
SRY					0

Change in Last 24 Hours

	< 24 Hrs	24-48 Hrs	48 - 72 Hrs	> 72 Hrs
CN	-91	70	-136	143
CP	125	40	-20	-55
SRY				

Loaded Cars on Hand Vancouver Waiting for Placement - Last 30 Days All Railways



Port Terminal Status

Prince Rupert

Daily Activity for 4/25/2019

	Cars Arrived	Cars Received in Interchange	Cars Delivered in Interchange	Cars Placed for Unloading	Loads on Wheels at Destination As of 4/25/2019
CN	168			144	363

Port Unloads

	04/25	04/24	Week To Date	Last Week
CN	192	207	933	1,348

Age Profile of Loaded Cars Waiting Placement for Unloading

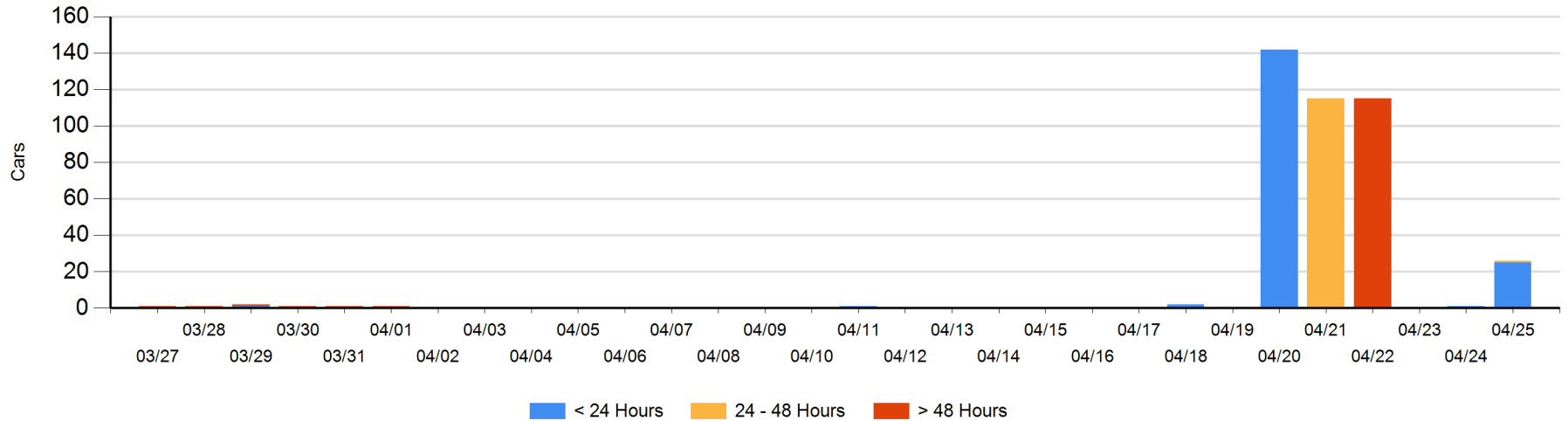
Today

	< 24 Hrs	24 - 48 Hrs	> 48-72 Hrs	> 72 Hrs	Total On Hand
CN	25	1			26

Change in Last 24 Hours

	< 24 Hrs	24-48 Hrs	48 - 72 Hrs	> 72 Hrs
CN	24	1		

Loaded Cars on Hand Prince Rupert Waiting for Placement - Last 30 Days All Railways



Port Terminal Status

Thunder Bay

Daily Activity for 4/25/2019

	Cars Arrived	Cars Received in Interchange	Cars Delivered in Interchange	Cars Placed for Unloading	Loads on Wheels at Destination As of 4/25/2019
CN				148	21
CP	1			201	470

Port Unloads

	04/25	04/24	Week To Date	Last Week
CN	213	106	501	436
CP	183	201	646	1,512

Age Profile of Loaded Cars Waiting Placement for Unloading

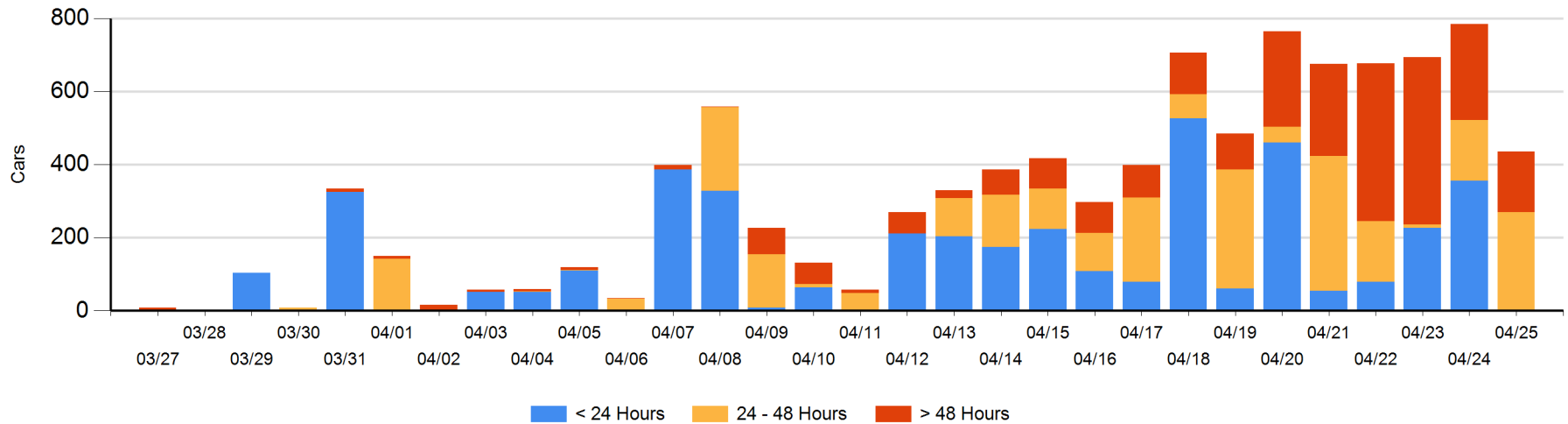
Today

	< 24 Hrs	24 - 48 Hrs	> 48-72 Hrs	> 72 Hrs	Total On Hand
CN				14	14
CP	1	268	40	113	422

Change in Last 24 Hours

	< 24 Hrs	24-48 Hrs	48 - 72 Hrs	> 72 Hrs
CN	-13		-10	-125
CP	-341	101	40	0

Loaded Cars on Hand Thunder Bay Waiting for Placement - Last 30 Days All Railways



Measurement Definitions

Loads on Wheels	<p>Count of loaded rail cars including all rail cars that have been released loaded at origin and have not been reported by the railway as unloaded at destination.</p> <p>Counts include all rail cars (hopper cars and boxcars) moving within a pipeline.</p>
Loads Not Moving	<p>Loaded rail cars for which the railways have not reported a movement event for 48 hours or more whether the rail car is at origin, enroute or at destination.</p>
Port Unloads	<p>Count of rail cars reported by railways as unloaded at the western port destinations of Vancouver, Prince Rupert and Thunder Bay.</p> <p>Unload counts include all rail cars (hopper cars and boxcars) unloaded by all receivers including major port terminals, transloaders and other receivers.</p>
Cars Arrived	<p>Count of rail cars reported as arrived at the destination railway terminal.</p>
Cars Received in Interchange	<p>Count of rail cars received in interchange by each railway within a destination railway terminal. Interchange activity is tracked for the Vancouver and Thunder Bay pipelines as applicable.</p>
Cars Delivered in Interchange	<p>Count of rail cars delivered in interchange by each railway within a destination railway terminal. Interchange activity is tracked for the Vancouver and Thunder Bay pipelines as applicable.</p>
Cars Placed for Unloading	<p>Count of rail cars reported by the railways as placed loaded at the receiver's facility for unloading.</p>
Loads on Wheels at Destination	<p>Count of rail cars that remain under load within the destination railway terminal including rail cars that have been reported as placed for unloading but not yet reported as unloaded.</p>
Waiting Placement for Unloading	<p>Count of rail cars that have been reported as arrived at the destination railway terminal but not reported as placed for unloading by the railway.</p> <p>For the Ports of Vancouver, Prince Rupert and Thunder Bay the count of rail cars waiting placement for unloading is categorized by age – i.e. the elapsed time from arrival at destination to the current report date.</p>