

SPEED READ

- Loads on wheels increased overnight, marking an increase in CN volumes offset by reduced CP volumes. On a net basis, volumes increased due to higher traffic in the Thunder Bay, E. Canada and Prince Rupert corridors offset by reduced traffic in the USA/MEX and Vancouver corridors.
- Network fluidity deteriorated overnight, led by a rise in idle car counts on both CN and CP by 20% (+150) and 37% (+242), respectively. The total count of cars for 4+ days on both railways increased 36% (+181) overnight - presently at 690 cars.
- Week 39 unloads ended ahead of prior week's performance by more than 450 unloads, marking improved week over week performance at Vancouver and Prince Rupert offset by reduced unloads at Thunder Bay.

Loads on Wheels

- Loads on wheels increased 2% (+287) overnight, due to higher traffic on CN offset by reduced traffic on CP - combined total at 12,021 and 10% above the trailing 30-day average.
- On a net basis, the rise in loads on wheels indicates higher volumes in the Thunder Bay, E. Canada and Prince Rupert corridors offset by reduced traffic in the USA/MEX and Vancouver corridors.
- CN volumes rose 9% (+547) overnight, with higher volumes across all corridors other than USA/MEX. System wide CN loads on wheels currently at 6,721, the highest seen in the last 30 days, and 12% above the trailing 30-day average.
- CP volumes declined 5% (-279) overnight, driven by a decline in volumes across all corridors other than Thunder Bay. CP system wide loads on wheels presently at 5,031 and 7% above the trailing 30-day average.
- Vancouver presently at 7,370, declined marginally by 1% (-86) overnight, now 12% above the trailing 30-day average.
- The Prince Rupert pipeline currently at 1,531, increased 4% (+60) overnight, and 1% below the trailing 30-day average.
- Thunder Bay volumes increased significantly by 24% (+341) overnight - presently at 1,756 and 48% above the trailing 30-day average, with 67% of traffic moving on CP.

Hopper Car Rationing

- CN rationed 100 hopper cars in week 38.

Loads Not Moving

- **The count of cars not moving for 48+ hours increased 27% (+392) overnight, marking higher counts on both CN and CP. Idle car counts currently at 1,821 and 7% above the trailing 30-day average.**
- CN
 - **The count of idle cars for 48+ hours increased 20% (+150) overnight - currently at 918 cars.**
 - The number of cars idle for 4+ days increased significantly by 98% (+244) overnight - presently at 492 cars.
 - The count of cars not moving for 7+ days increased significantly by 167% (+144) overnight - presently at 230 cars.
 - Vancouver represents 47% of all idle cars.
 - In total 32% of all idle cars are dwelling at origin locations.
- CP
 - **CP idle car counts for 48+ hours increased 37% (+242) overnight - presently at 903 cars.**
 - The number of cars idle for 4+ days declined 24% (-63) overnight - presently at 198 cars.

- The number of cars idle for 7+ days declined 4% (-2) overnight - presently at 54 cars, the lowest seen in the last 30 days.
- Vancouver accounts for 69% of all idle cars.
- In total 18% of all idle cars are dwelling at origin locations.

Port Performance

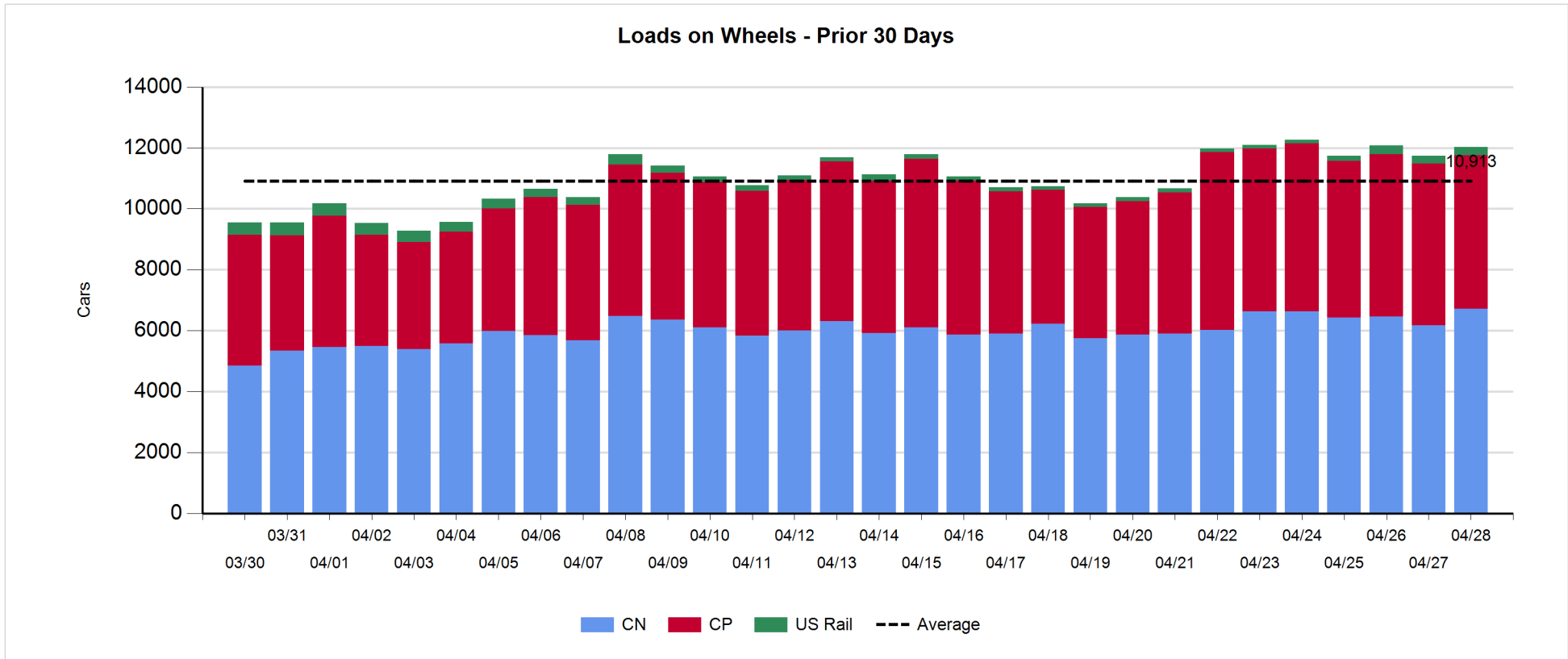
- CN and CP reported a total of 1,054 cars unloaded at the three major ports, now 9% below the trailing 30-day average. Week 39 unloads ended ahead of last week's pace by more than 450 unloads, marking higher unloads at Vancouver and Prince Rupert offset by reduced unloads at Thunder Bay.
- Vancouver
 - 774 unloads reported by CN and CP at the Port of Vancouver; CN - 287 and CP - 487. Week 39 unloads concluded ahead of last week's performance by more than 300 unloads.
 - There are 1,950 cars on site at Vancouver with 1,300 cars arriving at the port in the last 24 hours.
 - CN and CP have 2,350 cars in British Columbia en route to Vancouver, with around 1,250 cars at Kamloops and west, and 57% of traffic moving on CN.
- Prince Rupert
 - Prince Rupert reported 248 unloads, concluded ahead of last week's unloads by 300 unloads.
 - Loads on wheels now above 1,000 cars - currently at 1,531 cars.
 - There are 600 cars west of Jasper en route to Prince Rupert.
 - There are more than 350 cars on site at Prince Rupert with around 300 cars arriving at the port in the last 24 hours.
- Thunder Bay
 - 32 unloads were reported at Thunder Bay yesterday. Week 39 unloads ended behind last week's pace by 150 unloads.
 - There are more than 750 cars on site at Thunder Bay with 400 cars arriving at the port in the prior 24 hours.
 - There are more than 200 cars en route to Thunder Bay from Winnipeg and east.

Daily Loads on Wheels - 4/28/2019

	E Canada	Prince Rupert	Thunder Bay	USA/MEX	Vancouver	Total
CN	638	1,531	582	245	3,725	6,721
CP	64		1,174	211	3,582	5,031
Short Line	1				63	64
US Rail				205		205
	703	1,531	1,756	661	7,370	12,021

Change in Loads on Wheels - Prior 24 Hours

	E Canada	Prince Rupert	Thunder Bay	USA/MEX	Vancouver	Total
CN	81	60	150	-2	258	547
CP	-12		191	-109	-349	-279
Short Line	0				5	5
US Rail				14		14
	69	60	341	-97	-86	287

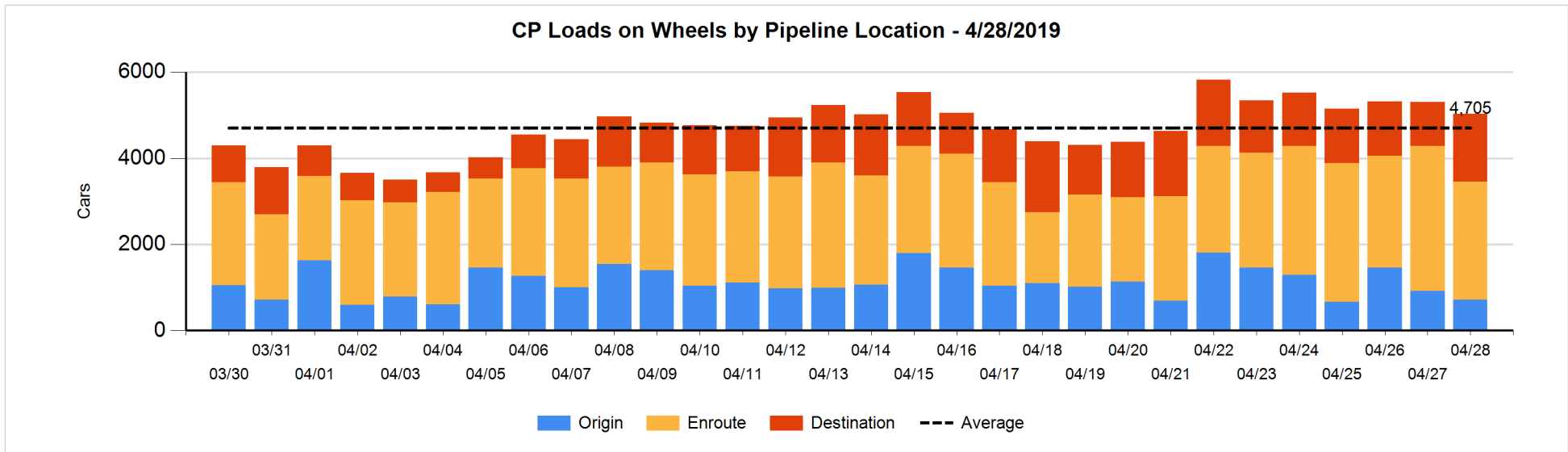
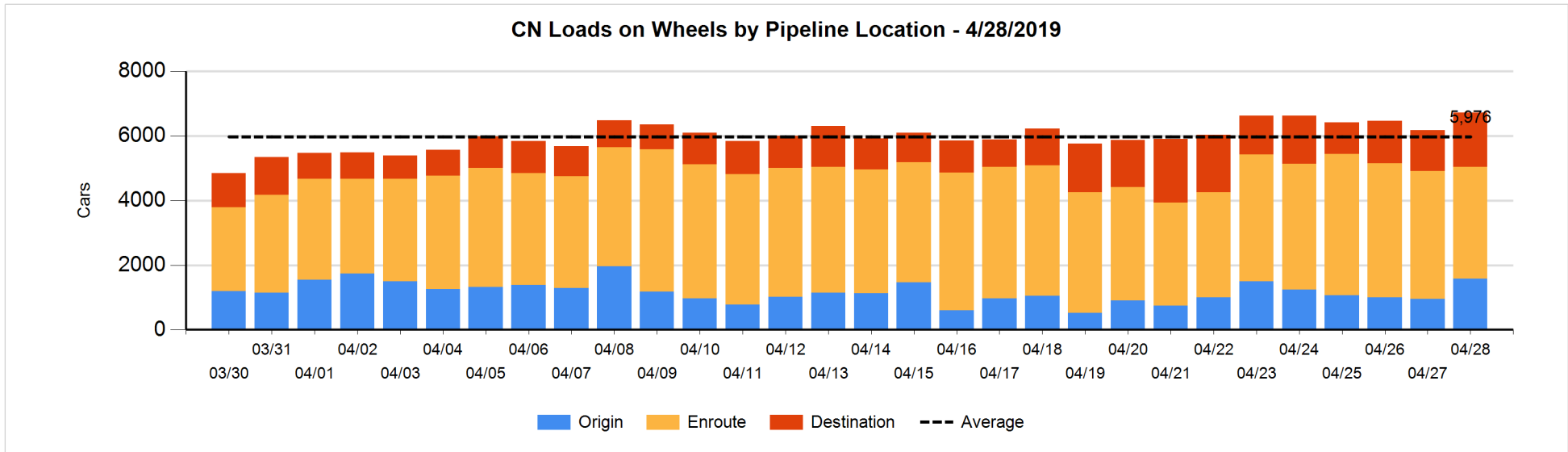


Daily Loads on Wheels By Pipeline Location - 4/28/2019

	E Canada	Prince Rupert	Thunder Bay	USA/MEX	Vancouver	Total
CN						
Origin	137	504	150	9	779	1,579
Enroute	385	665	107	197	2,108	3,462
Destination	116	362	325	39	838	1,680
	638	1,531	582	245	3,725	6,721
CP						
Origin			174		542	716
Enroute	50		546	155	1,986	2,737
Destination	14		454	56	1,054	1,578
	64		1,174	211	3,582	5,031
US Rail / Short Line						
Origin						
Enroute				143		143
Destination	1			62	63	126
	1			205	63	269

Change in Daily Loads on Wheels By Pipeline Location - Prior 24 Hours

	E Canada	Prince Rupert	Thunder Bay	USA/MEX	Vancouver	Total
CN						
Origin	104	243	150	-17	155	635
Enroute	-37	-217	-178	-9	-70	-511
Destination	14	34	178	24	173	423
	81	60	150	-2	258	547
CP						
Origin	-30		5		-174	-199
Enroute	20		0	-116	-533	-629
Destination	-2		185	7	358	548
	-12		190	-109	-349	-280
US Rail / Short Line						
Origin						
Enroute				94		94
Destination	0			-80	5	-75
	0			14	5	19

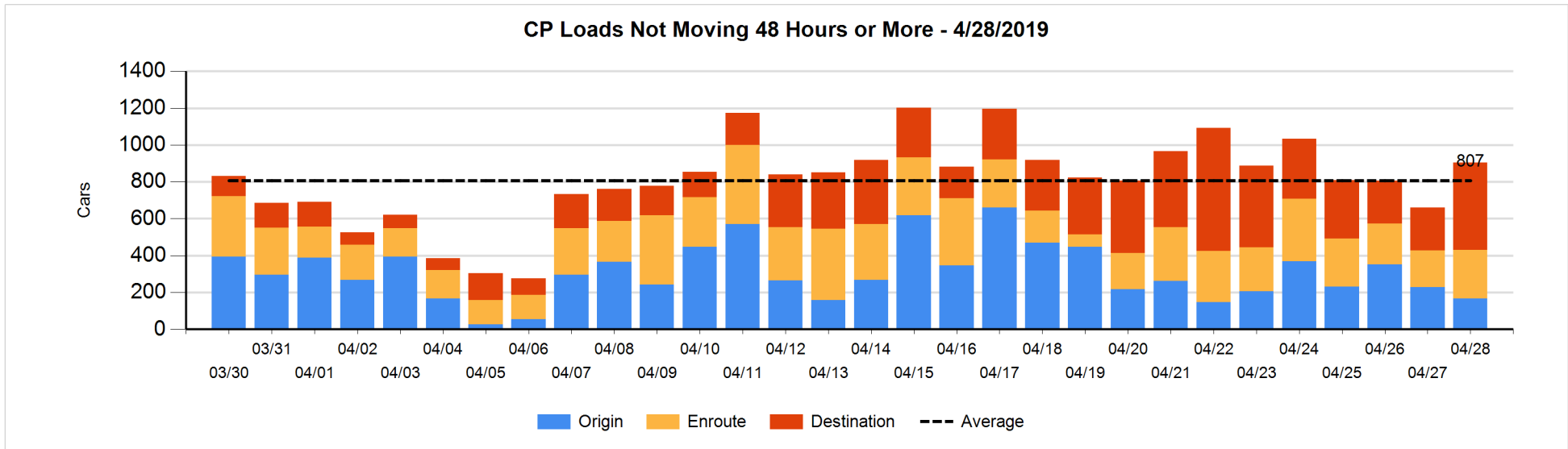
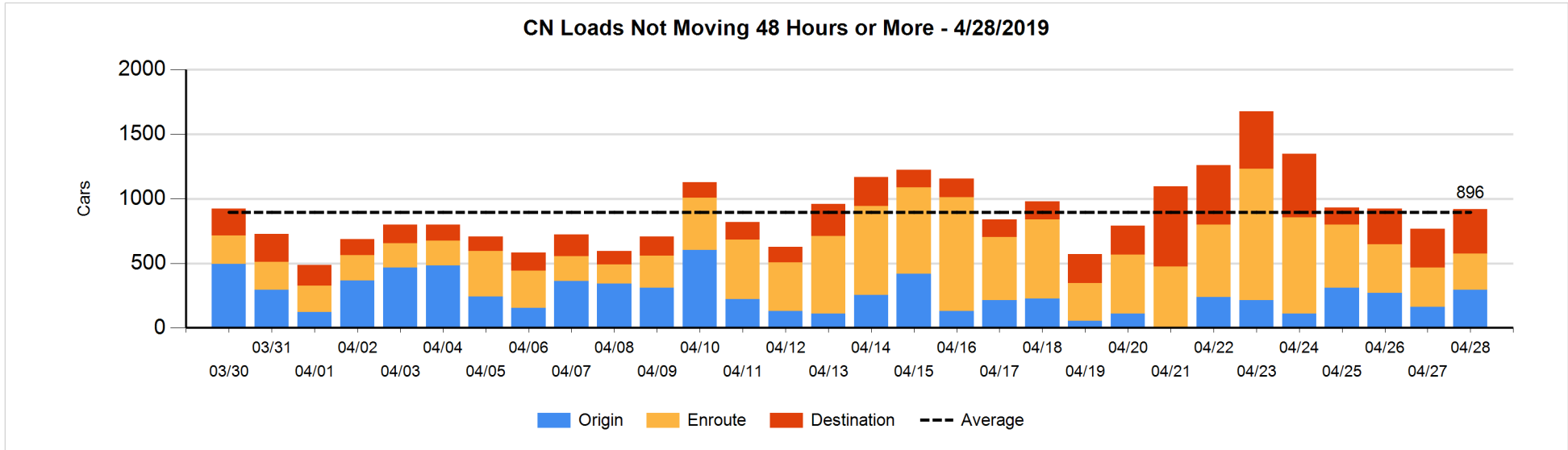


Loads Not Moving 48 Hours or More - 4/28/2019

	E Canada	Prince Rupert	Thunder Bay	USA/MEX	Vancouver	Total
CN						
Origin	3	96		1	195	295
Enroute	125	7	2	15	132	281
Destination	57	104	64	14	103	342
	185	207	66	30	430	918
CP						
Origin			63		104	167
Enroute	2			111	151	264
Destination	14		82	11	365	472
	16		145	122	620	903
US Rail / Short Line						
Origin						
Enroute				24		24
Destination	1			53	43	97
	1			77	43	121

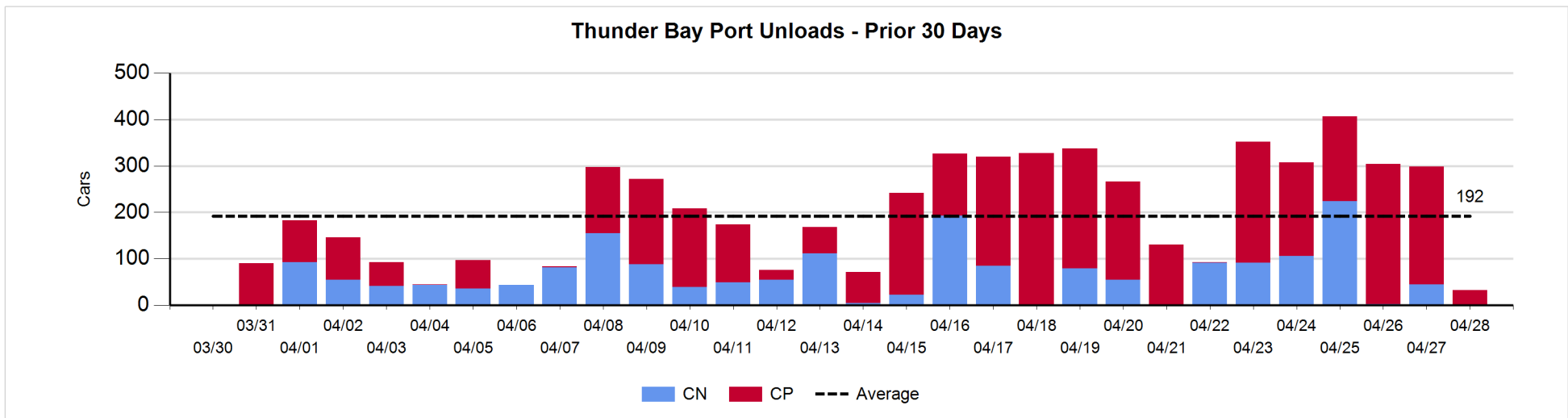
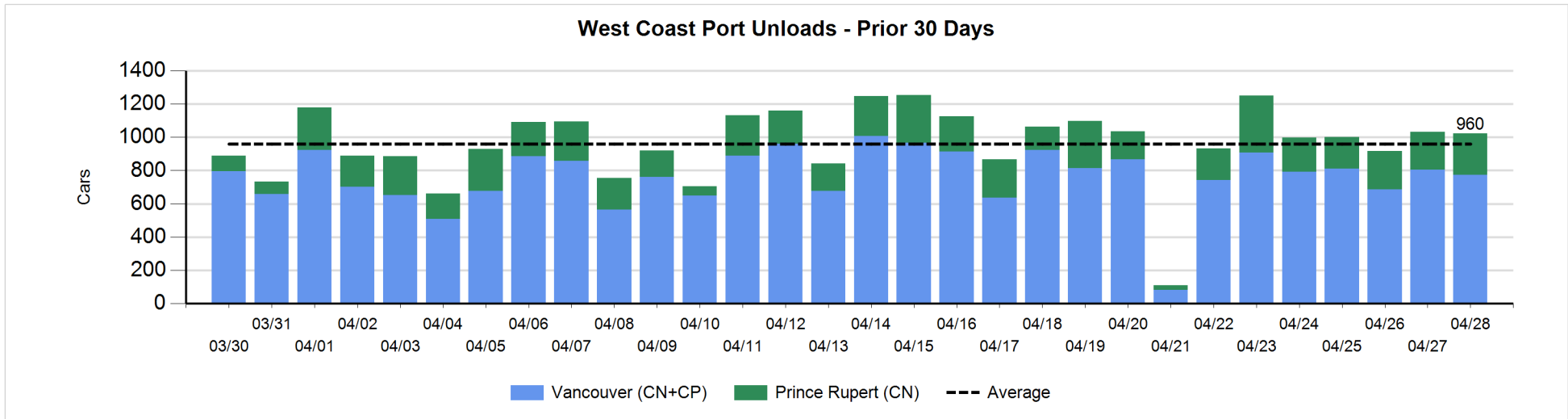
Change in Loads Not Moving 48 Hours or More - 4/28/2019

	E Canada	Prince Rupert	Thunder Bay	USA/MEX	Vancouver	Total
CN						
Origin	1	-65		1	195	132
Enroute	4	-26	0	2	-1	-21
Destination	31	-87	56	2	37	39
	36	-178	56	5	231	150
CP						
Origin	-13		-5		-42	-60
Enroute	2		-2	69	-5	64
Destination	-1		41	-14	212	238
	-12		34	55	165	242
US Rail / Short Line						
Origin						
Enroute				-2		-2
Destination	1			6	32	39
	1			4	32	37



Port Unloads - 4/28/2019

	Prince Rupert	Vancouver	West Coast Total	Thunder Bay	Total
CN	248	287	535		535
CP		487	487	32	519
	248	774	1,022	32	1,054



Port Terminal Status

Vancouver

Daily Activity for 4/28/2019

	Cars Arrived	Cars Received in Interchange	Cars Delivered in Interchange	Cars Placed for Unloading	Loads on Wheels at Destination As of 4/28/2019
CN	301	245	199	512	838
CP	999	197	251	627	1,054
SRY		8		1	63

Port Unloads

	04/28	04/27	Week To Date	Last Week
CN	287	374	2,384	2,283
CP	487	430	3,132	2,920
SRY	3	4	42	27

Age Profile of Loaded Cars Waiting Placement for Unloading

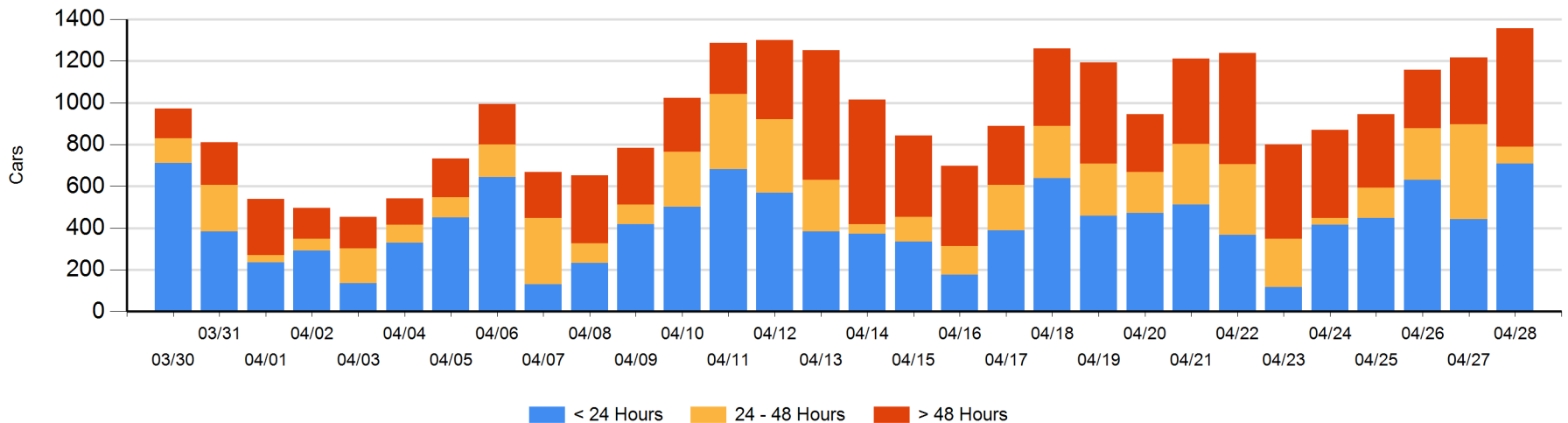
Today

	< 24 Hrs	24 - 48 Hrs	> 48-72 Hrs	> 72 Hrs	Total On Hand
CN	296	1	122	153	572
CP	414	79	174	117	784
SRY					0

Change in Last 24 Hours

	< 24 Hrs	24-48 Hrs	48 - 72 Hrs	> 72 Hrs
CN	-11	-234	66	25
CP	279	-140	138	16
SRY				

Loaded Cars on Hand Vancouver Waiting for Placement - Last 30 Days All Railways



Port Terminal Status

Prince Rupert

Daily Activity for 4/28/2019

	Cars Arrived	Cars Received in Interchange	Cars Delivered in Interchange	Cars Placed for Unloading	Loads on Wheels at Destination As of 4/28/2019
CN	281			281	362

Port Unloads

	04/28	04/27	Week To Date	Last Week
CN	248	229	1,640	1,348

Age Profile of Loaded Cars Waiting Placement for Unloading

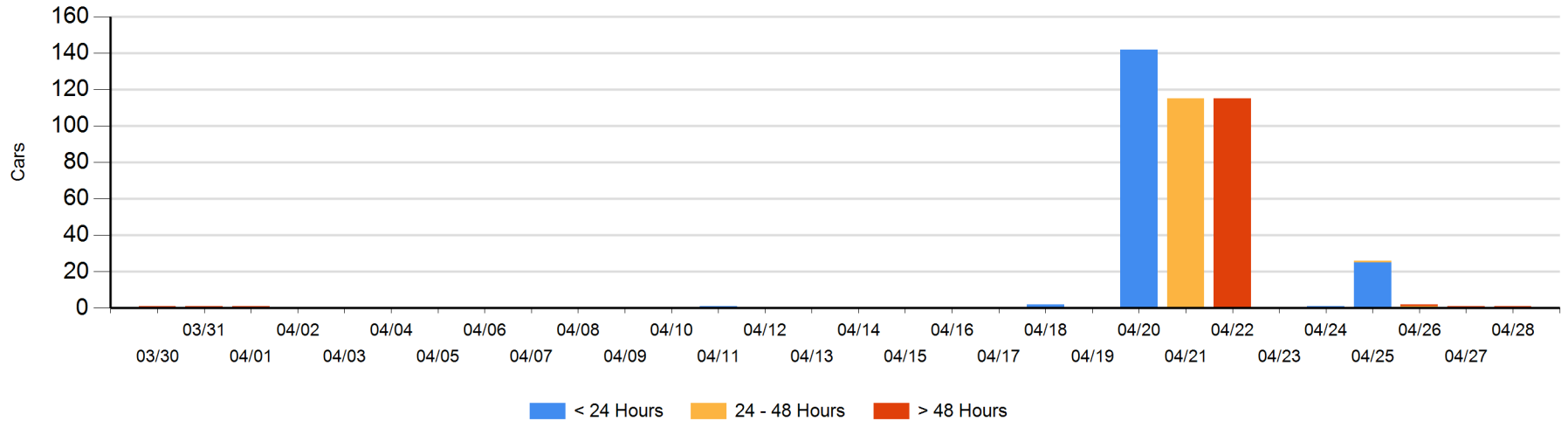
Today

	< 24 Hrs	24 - 48 Hrs	> 48-72 Hrs	> 72 Hrs	Total On Hand
CN				1	1

Change in Last 24 Hours

	< 24 Hrs	24-48 Hrs	48 - 72 Hrs	> 72 Hrs
CN			-1	1

Loaded Cars on Hand Prince Rupert Waiting for Placement - Last 30 Days All Railways



Port Terminal Status

Thunder Bay

Daily Activity for 4/28/2019

	Cars Arrived	Cars Received in Interchange	Cars Delivered in Interchange	Cars Placed for Unloading	Loads on Wheels at Destination As of 4/28/2019
CN	178			50	325
CP	218			63	454

Port Unloads

	04/28	04/27	Week To Date	Last Week
CN		45	559	436
CP	32	253	1,233	1,512

Age Profile of Loaded Cars Waiting Placement for Unloading

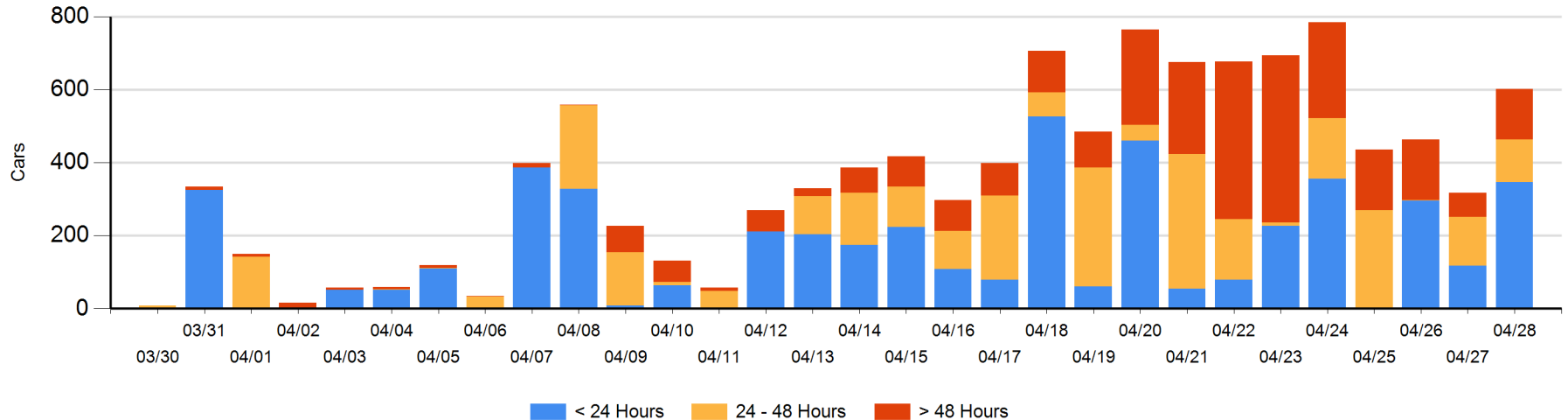
Today

	< 24 Hrs	24 - 48 Hrs	> 48-72 Hrs	> 72 Hrs	Total On Hand
CN	128	5	56	2	191
CP	218	113	46	33	410

Change in Last 24 Hours

	< 24 Hrs	24-48 Hrs	48 - 72 Hrs	> 72 Hrs
CN	123	-51	56	0
CP	105	36	45	-31

Loaded Cars on Hand Thunder Bay Waiting for Placement - Last 30 Days All Railways



Measurement Definitions

Loads on Wheels	<p>Count of loaded rail cars including all rail cars that have been released loaded at origin and have not been reported by the railway as unloaded at destination.</p> <p>Counts include all rail cars (hopper cars and boxcars) moving within a pipeline.</p>
Loads Not Moving	<p>Loaded rail cars for which the railways have not reported a movement event for 48 hours or more whether the rail car is at origin, enroute or at destination.</p>
Port Unloads	<p>Count of rail cars reported by railways as unloaded at the western port destinations of Vancouver, Prince Rupert and Thunder Bay.</p> <p>Unload counts include all rail cars (hopper cars and boxcars) unloaded by all receivers including major port terminals, transloaders and other receivers.</p>
Cars Arrived	<p>Count of rail cars reported as arrived at the destination railway terminal.</p>
Cars Received in Interchange	<p>Count of rail cars received in interchange by each railway within a destination railway terminal. Interchange activity is tracked for the Vancouver and Thunder Bay pipelines as applicable.</p>
Cars Delivered in Interchange	<p>Count of rail cars delivered in interchange by each railway within a destination railway terminal. Interchange activity is tracked for the Vancouver and Thunder Bay pipelines as applicable.</p>
Cars Placed for Unloading	<p>Count of rail cars reported by the railways as placed loaded at the receiver's facility for unloading.</p>
Loads on Wheels at Destination	<p>Count of rail cars that remain under load within the destination railway terminal including rail cars that have been reported as placed for unloading but not yet reported as unloaded.</p>
Waiting Placement for Unloading	<p>Count of rail cars that have been reported as arrived at the destination railway terminal but not reported as placed for unloading by the railway.</p> <p>For the Ports of Vancouver, Prince Rupert and Thunder Bay the count of rail cars waiting placement for unloading is categorized by age – i.e. the elapsed time from arrival at destination to the current report date.</p>