

Note to Reader

Alliance Grain Terminal in Vancouver has now begun planned maintenance which is expected to continue until mid-August.

SPEED READ

- Loads on wheels increased marginally overnight, reflecting an increase in both CN and CP volumes. On a net basis, volumes increased due to higher traffic levels in the Prince Rupert and USA/MEX corridors offset by reduced traffic in the Thunder Bay, Vancouver and E Canada corridors.
- Network fluidity deteriorated overnight, led by an increase in idle car counts on CN by 33% offset by a decline in idle car counts on CP by 15%. The total count of cars for 4+ days on both railways was largely unchanged overnight - currently at 615 cars.
- Three days in Week 2 unloads now ahead of prior week's performance by nearly 350 unloads, marking an improvement in week over week performance at Vancouver and Prince Rupert offset by lower unloads at Thunder Bay.

=====

Loads on Wheels

- Loads on wheels increased slightly by 1% (+55) overnight due to higher volumes on both CN and CP - combined total at 8,209 and 1% below the trailing 30-day average.
- On a net basis, the increase in loads on wheels reflects higher traffic in the Prince Rupert and USA/MEX corridors offset by lower traffic in the Thunder Bay, Vancouver and E Canada corridors.
- CN volumes rose marginally by 1% (+37) overnight with increased traffic levels in the Prince Rupert and Thunder Bay corridors offset by reduced volumes in the Vancouver, USA/MEX and E Canada corridors. System wide CN loads on wheels currently at 4,624 and 9% above the trailing 30-day average.
- CP volumes gained 2% (+48) overnight driven by an uptick in traffic in the Vancouver and USA/MEX corridors offset by a decrease in traffic levels in the Thunder Bay corridor. CP system wide loads on wheels now at 3,197 and 15% below the trailing 30-day average.
- Vancouver currently at 4,519, declined slightly by 1% (-29) overnight and 5% above the trailing 30-day average.
- The Prince Rupert pipeline now at 1,367, the highest seen in the last 30 days, increased significantly by 25% (+270) overnight and 33% above the trailing 30-day average.
- Thunder Bay volumes decreased for the eighth consecutive day, down significantly by 17% (-200) overnight - currently at 953, the lowest seen in the last 30 days, and 42% below the trailing 30-day average with 49% of traffic moving on CP.

Hopper Car Rationing

- No hopper car rationing was reported for either CN or CP in week 1 and none expected in week 2.

Loads Not Moving

- The count of cars not moving for 48+ hours rose 5% (+63) overnight, reflecting higher counts on CN offset by lower counts on CP. Idle car counts currently at 1,259 and 30% below the trailing 30-day-average.
- CN
 - **The count of idle cars increased 33% (+168) overnight - idle car counts now at 676.**
 - The number of cars idle for 4+ days fell 8% (-19) overnight and have now decreased for six consecutive days - currently at 211 cars.
 - The count of cars not moving for 7+ days declined for the fourth consecutive day, down significantly by 42% (-58) overnight - currently at 81 cars.
 - Vancouver represents 38% of all idle cars.

- In total 64% of all idle cars are dwelling at origin locations.
- CP
 - **CP counts decreased 15% (-105) overnight - idle car counts currently at 583.**
 - The number of cars idle for 4+ days gained 7% (+25) overnight - now at 404 cars.
 - The number of cars idle for 7+ days decreased 2% (-3) overnight - now at 144 cars.
 - Vancouver accounts for 53% of all idle cars.
 - In total 29% of all idle cars are dwelling at origin locations.

Port Performance

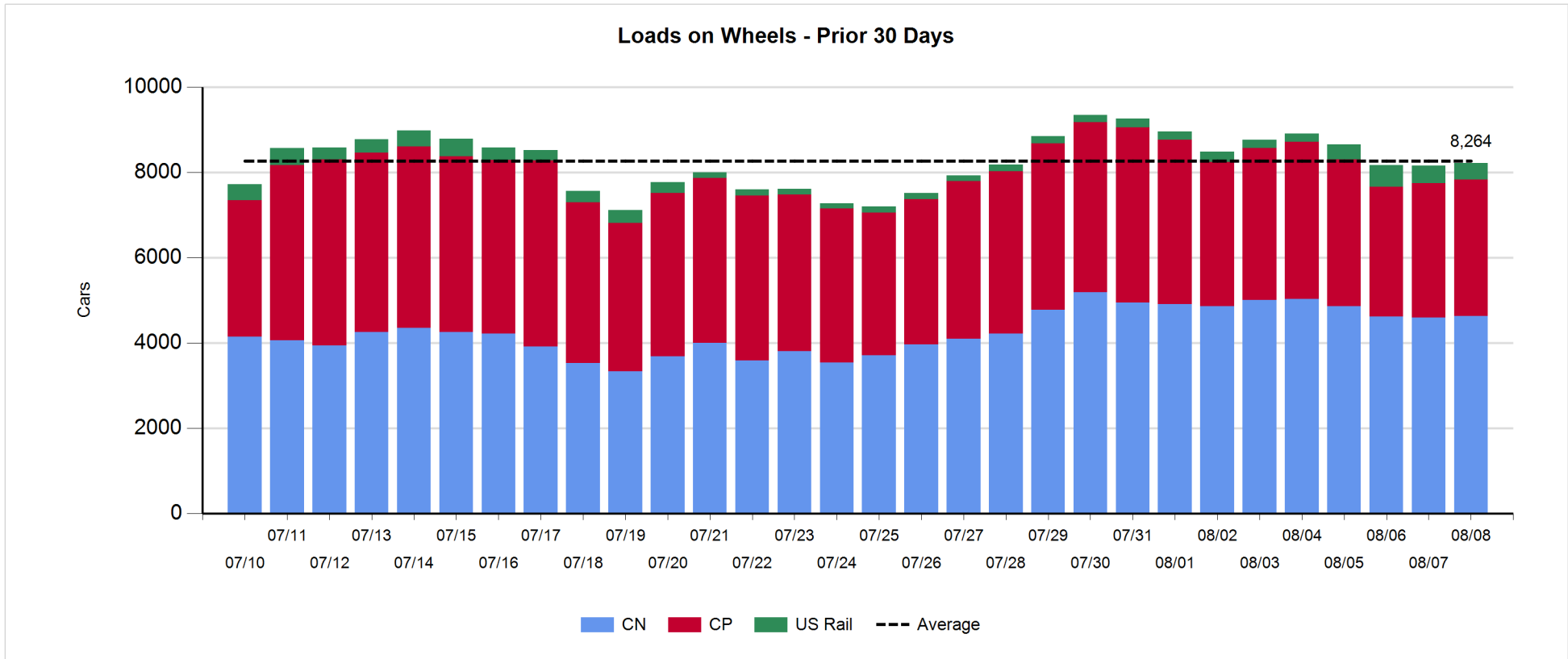
- CN and CP reported a total of 1,236 cars unloaded at the three major ports, now 44% above the trailing 30-day average. Three days in Week 2 unloads are tracking ahead of last week's pace by less than 350 unloads, reflecting higher unloads at Vancouver and Prince Rupert offset by reduced unloads at Thunder Bay.
- Vancouver
 - 832 unloads, the highest seen in the last 30 days, was reported by CN and CP at the Port of Vancouver; CN - 541 and CP - 291. Three days in Week 2 unloads are tracking ahead of last week's performance by nearly 450 unloads.
 - There are about 1,150 cars on site at Vancouver with around 900 cars arriving at the port in the last 24 hours.
 - CN and CP have nearly 600 cars in British Columbia en route to Vancouver, with about 200 Kamloops and west and 62% of traffic currently moving on CP.
- Prince Rupert
 - Prince Rupert reported 98 unloads, now ahead of last week's unloads after three days by fewer than 50 unloads.
 - Loads on wheels now above 1,000 cars.
 - There are nearly 350 cars west of Jasper - predominantly Prince George and west.
 - There are 19 cars on site at Prince Rupert with 19 cars arriving at the port in the last 24 hours. Given the structure of the pipeline, there is a chance unloads might be challenged in the next few days.
- Thunder Bay
 - 306 unloads reported at Thunder Bay yesterday. Three days in Week 2 unloads are tracking behind last week's pace by nearly 150 unloads.
 - There are more than 600 cars on site at Thunder Bay with more than 100 cars arriving at the port in the prior 24 hours.
 - There are fewer than 150 cars en route to Thunder Bay from Winnipeg and east. Cars on hand and those en route should support unloads for the balance of the week.

Daily Loads on Wheels - 8/8/2018

	E Canada	Prince Rupert	Thunder Bay	USA/MEX	Vancouver	Total
CN	340	1,367	485	319	2,113	4,624
CP	19		468	314	2,396	3,197
Short Line	16				10	26
US Rail				362		362
	375	1,367	953	995	4,519	8,209

Change in Loads on Wheels - Prior 24 Hours

	E Canada	Prince Rupert	Thunder Bay	USA/MEX	Vancouver	Total
CN	-5	270	66	-43	-251	37
CP	0		-266	82	232	48
Short Line	-9				-10	-19
US Rail				-11		-11
	-14	270	-200	28	-29	55

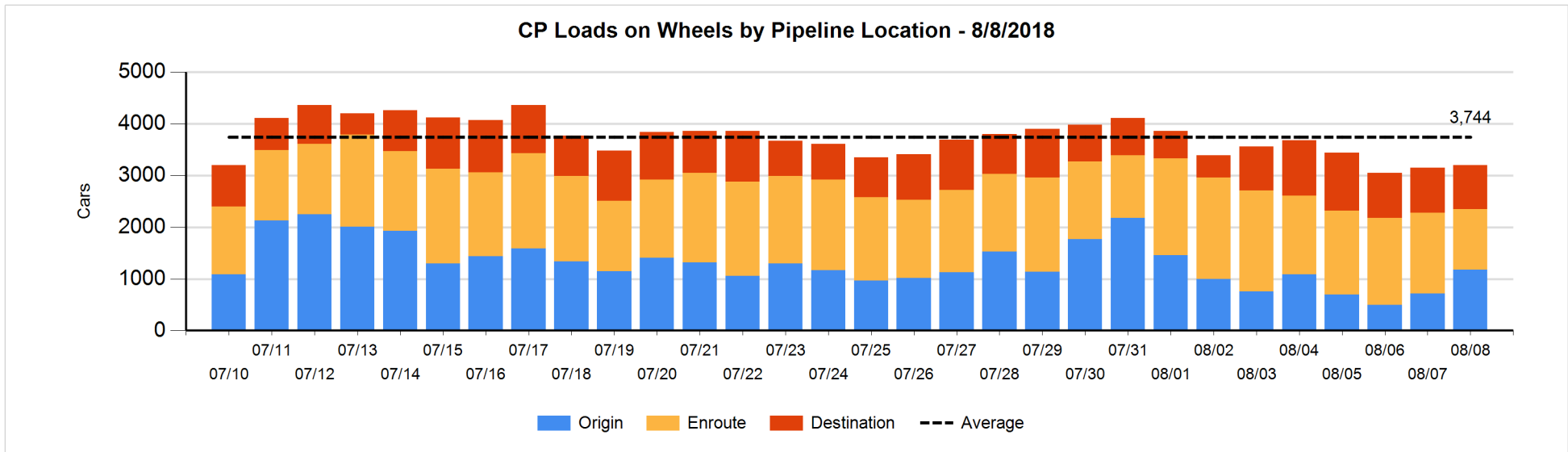
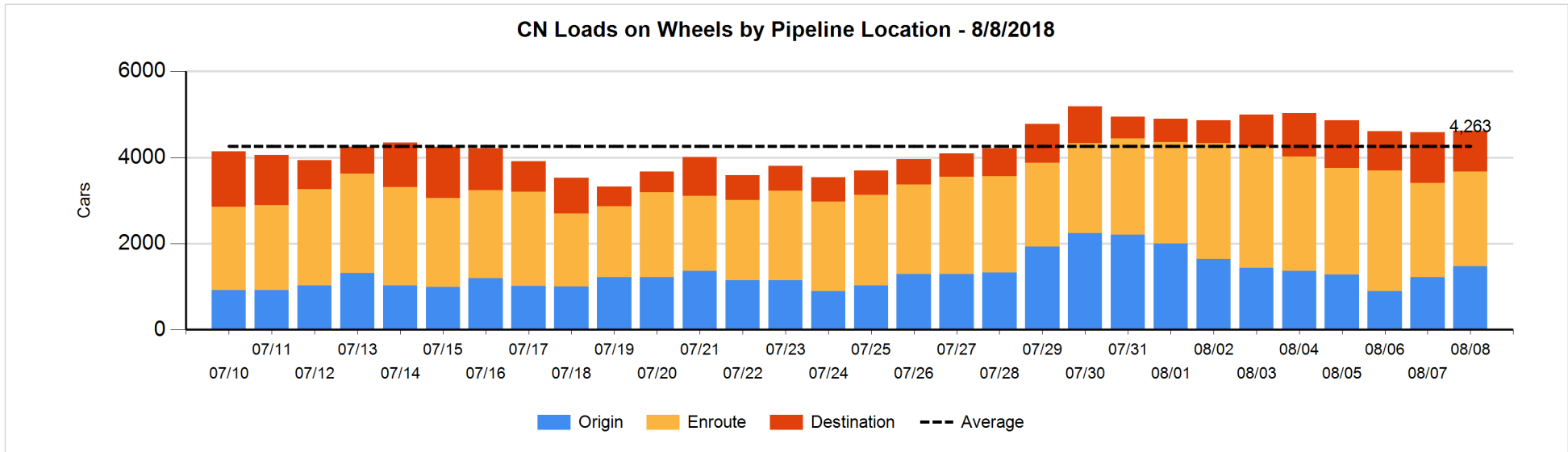


Daily Loads on Wheels By Pipeline Location - 8/8/2018

	E Canada	Prince Rupert	Thunder Bay	USA/MEX	Vancouver	Total
CN						
Origin	107	613	171	88	495	1,474
Enroute	222	735	96	214	935	2,202
Destination	12	19	218	17	683	949
	341	1,367	485	319	2,113	4,625
CP						
Origin	3		29	184	964	1,180
Enroute	15		43	128	983	1,169
Destination	1		396	2	449	848
	19		468	314	2,396	3,197
US Rail / Short Line						
Origin						
Enroute	9			296		305
Destination	7			66	10	83
	16			362	10	388

Change in Daily Loads on Wheels By Pipeline Location - Prior 24 Hours

	E Canada	Prince Rupert	Thunder Bay	USA/MEX	Vancouver	Total
CN						
Origin	-50	143	72	0	87	252
Enroute	43	206	31	-40	-218	22
Destination	3	-79	-37	-3	-120	-236
	-4	270	66	-43	-251	38
CP						
Origin	0		-4	134	338	468
Enroute	0		-108	-16	-277	-401
Destination	0		-154	-36	171	-19
	0		-266	82	232	48
US Rail / Short Line						
Origin						
Enroute	1			-10		-9
Destination	-10			-1	-10	-21
	-9			-11	-10	-30

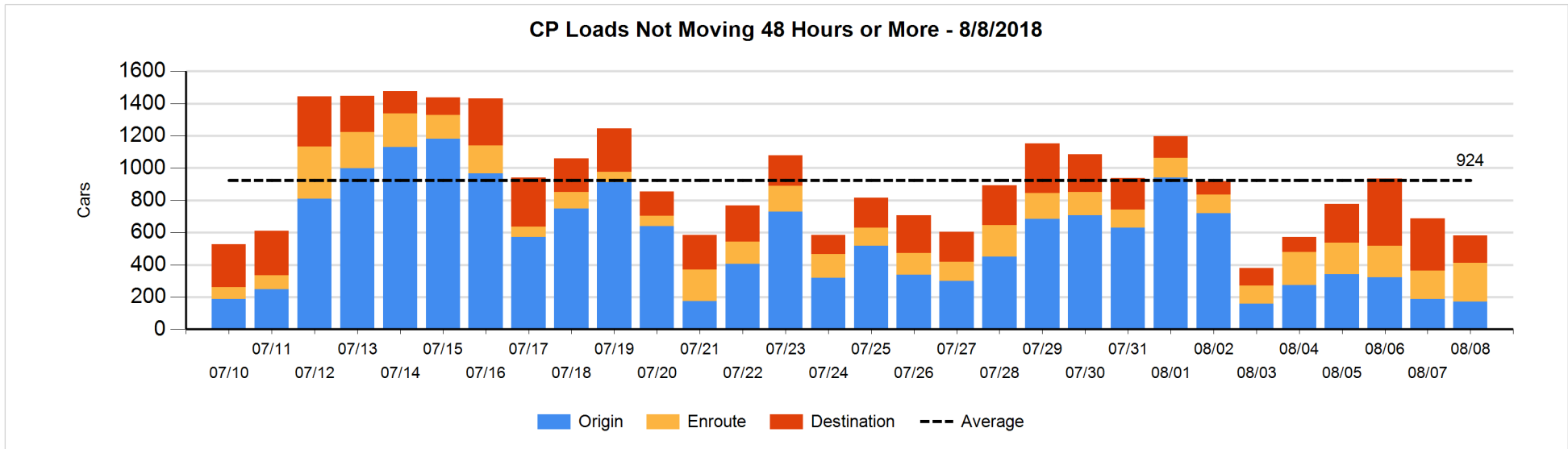
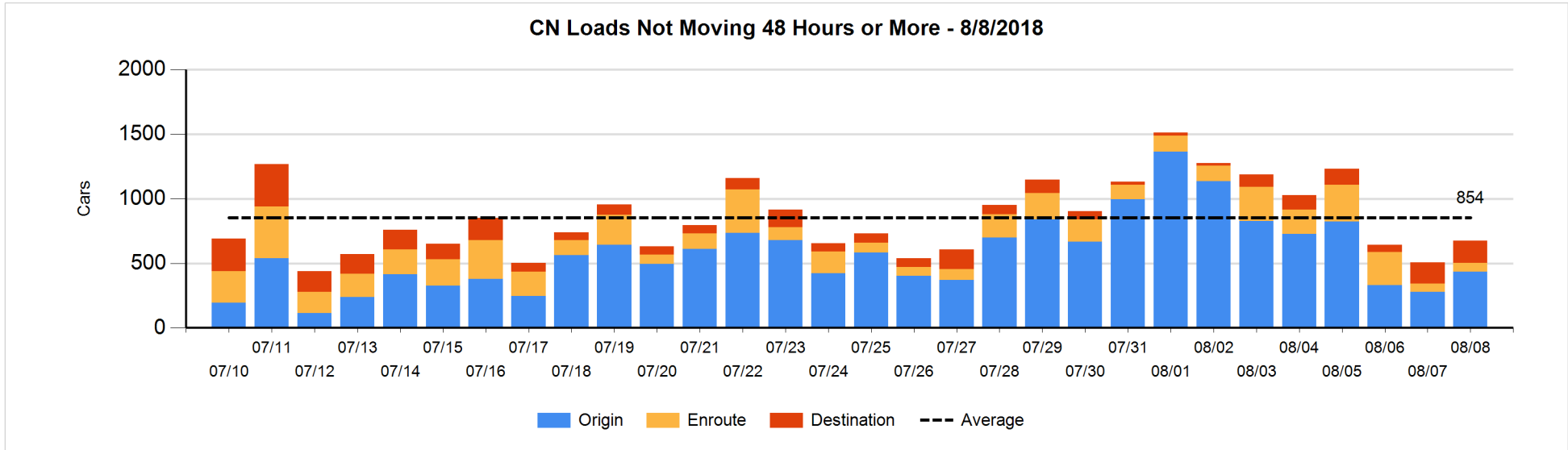


Loads Not Moving 48 Hours or More - 8/8/2018

	E Canada	Prince Rupert	Thunder Bay	USA/MEX	Vancouver	Total
CN						
Origin		151	68	34	183	436
Enroute	2	21	2	13	30	68
Destination			125	3	44	172
	2	172	195	50	257	676
CP						
Origin	3		29	2	136	170
Enroute	2		12	64	165	243
Destination	1		158	2	9	170
	6		199	68	310	583
US Rail / Short Line						
Origin						
Enroute	4			42		46
Destination	1			22	1	24
	5			64	1	70

Change in Loads Not Moving 48 Hours or More - 8/8/2018

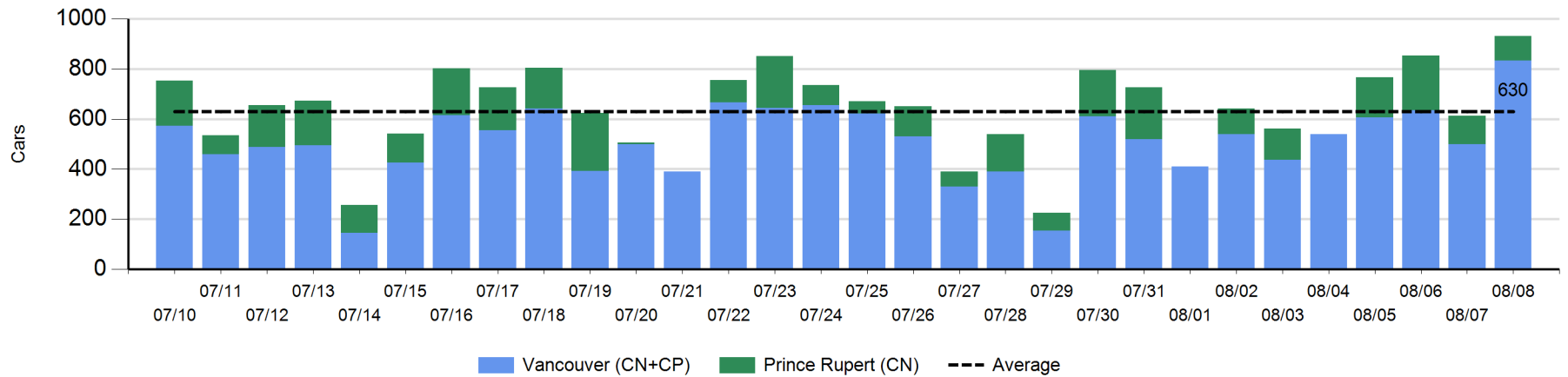
	E Canada	Prince Rupert	Thunder Bay	USA/MEX	Vancouver	Total
CN						
Origin		-15	68	-3	106	156
Enroute	1	14	0	-2	-8	5
Destination	-3		5	-1	6	7
	-2	-1	73	-6	104	168
CP						
Origin	0		0	0	-18	-18
Enroute	-8		-14	24	67	69
Destination	0		-156	0	0	-156
	-8		-170	24	49	-105
US Rail / Short Line						
Origin						
Enroute	-3			11		8
Destination	0			8	-10	-2
	-3			19	-10	6



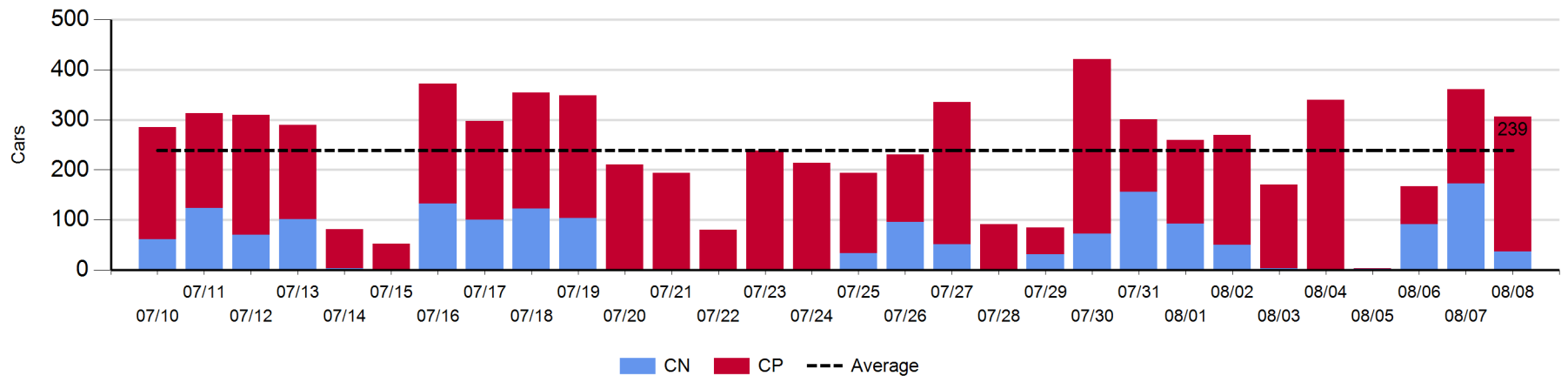
Port Unloads - 8/8/2018

	Prince Rupert	Vancouver	West Coast Total	Thunder Bay	Total
CN	98	541	639	37	676
CP		291	291	269	560
	98	832	930	306	1,236

West Coast Port Unloads - Prior 30 Days



Thunder Bay Port Unloads - Prior 30 Days



Port Terminal Status

Vancouver

Daily Activity for 8/8/2018

	Cars Arrived	Cars Received in Interchange	Cars Delivered in Interchange	Cars Placed for Unloading	Loads on Wheels at Destination As of 8/8/2018
CN	373	252	227	309	683
CP	513	219	252	290	449
SRY		8		4	10

Port Unloads

	08/08	08/07	Week To Date	Last Week
CN	541	312	1,164	2,131
CP	291	187	802	1,530
SRY	13	14	29	24

Age Profile of Loaded Cars Waiting Placement for Unloading

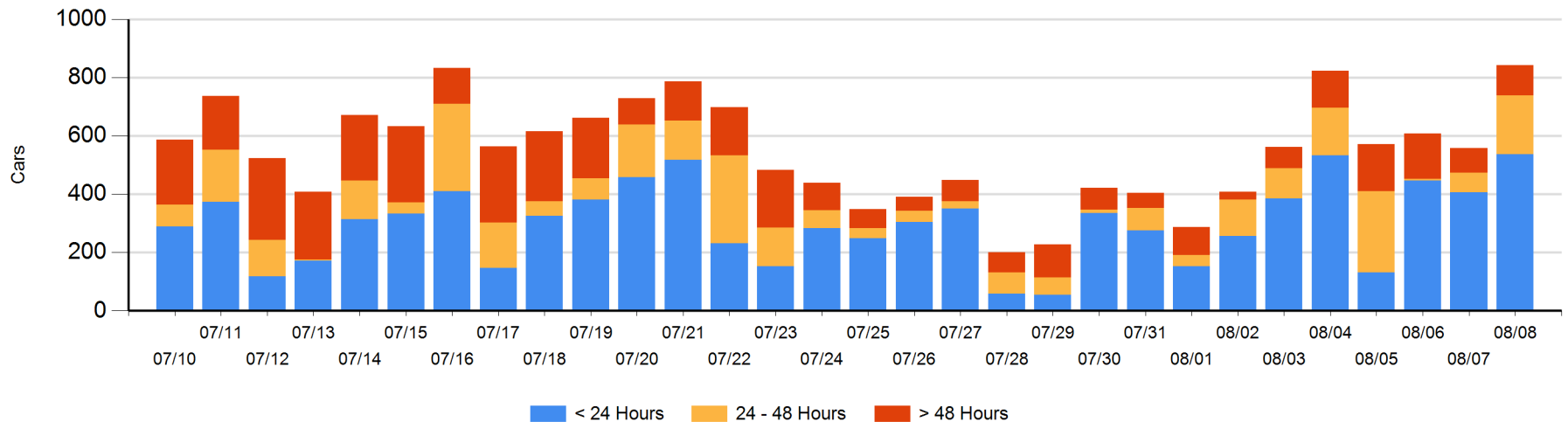
Today

	< 24 Hrs	24 - 48 Hrs	> 48-72 Hrs	> 72 Hrs	Total On Hand
CN	289	152	31	29	501
CP	247	50	6	39	342
SRY					0

Change in Last 24 Hours

	< 24 Hrs	24-48 Hrs	48 - 72 Hrs	> 72 Hrs
CN	69	92	31	-10
CP	60	44	3	-5
SRY				

Loaded Cars on Hand Vancouver Waiting for Placement - Last 30 Days All Railways



Port Terminal Status

Prince Rupert

Daily Activity for 8/8/2018

	Cars Arrived	Cars Received in Interchange	Cars Delivered in Interchange	Cars Placed for Unloading	Loads on Wheels at Destination As of 8/8/2018
CN	19			19	19

Port Unloads

	08/08	08/07	Week To Date	Last Week
CN	98	114	429	779

Age Profile of Loaded Cars Waiting Placement for Unloading

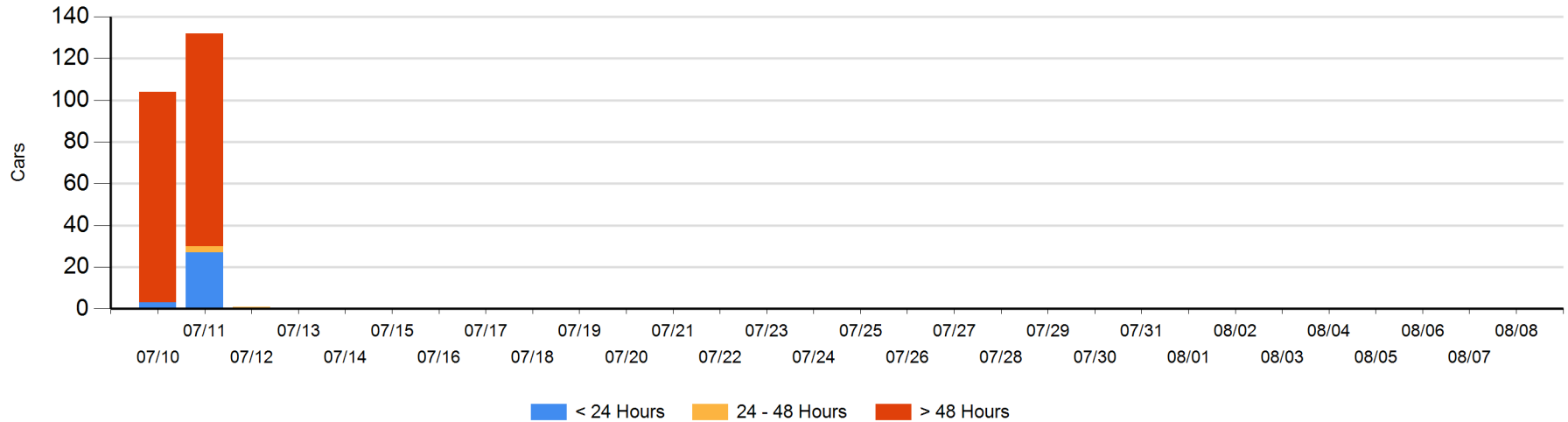
Today

	< 24 Hrs	24 - 48 Hrs	> 48-72 Hrs	> 72 Hrs	Total On Hand
CN					0

Change in Last 24 Hours

	< 24 Hrs	24-48 Hrs	48 - 72 Hrs	> 72 Hrs
CN				

Loaded Cars on Hand Prince Rupert Waiting for Placement - Last 30 Days All Railways



Port Terminal Status

Thunder Bay

Daily Activity for 8/8/2018

	Cars Arrived	Cars Received in Interchange	Cars Delivered in Interchange	Cars Placed for Unloading	Loads on Wheels at Destination As of 8/8/2018
CN				69	218
CP	115			378	396

Port Unloads

	08/08	08/07	Week To Date	Last Week
CN	37	173	301	375
CP	269	188	533	1,391

Age Profile of Loaded Cars Waiting Placement for Unloading

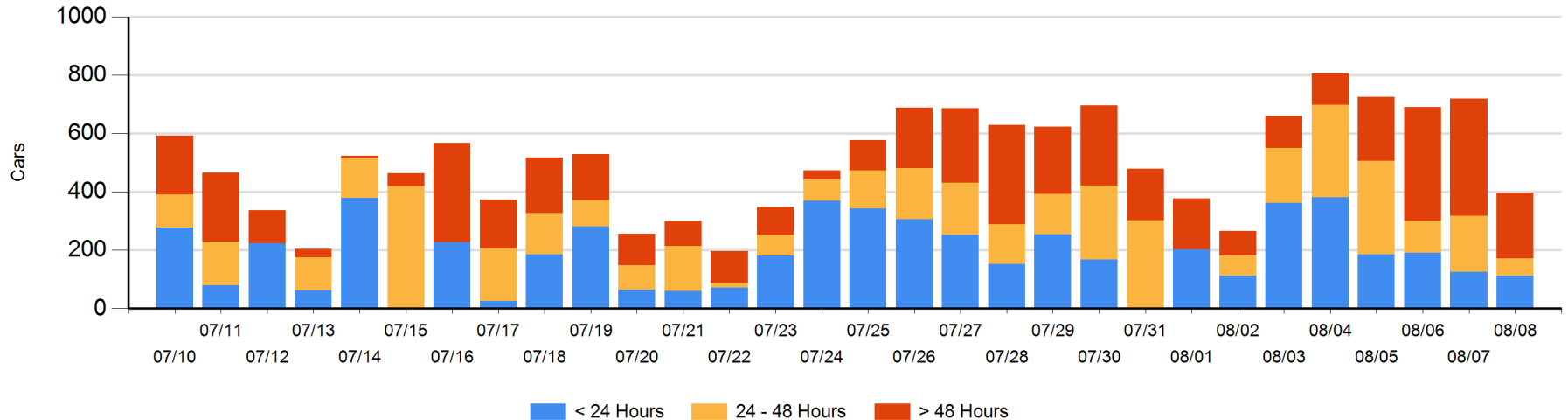
Today

	< 24 Hrs	24 - 48 Hrs	> 48-72 Hrs	> 72 Hrs	Total On Hand
CN		59	28	76	163
CP	112	1	34	87	234

Change in Last 24 Hours

	< 24 Hrs	24-48 Hrs	48 - 72 Hrs	> 72 Hrs
CN	-59	9	-62	43
CP	46	-141	16	-175

Loaded Cars on Hand Thunder Bay Waiting for Placement - Last 30 Days All Railways



Measurement Definitions

Loads on Wheels	<p>Count of loaded rail cars including all rail cars that have been released loaded at origin and have not been reported by the railway as unloaded at destination.</p> <p>Counts include all rail cars (hopper cars and boxcars) moving within a pipeline.</p>
Loads Not Moving	<p>Loaded rail cars for which the railways have not reported a movement event for 48 hours or more whether the rail car is at origin, enroute or at destination.</p>
Port Unloads	<p>Count of rail cars reported by railways as unloaded at the western port destinations of Vancouver, Prince Rupert and Thunder Bay.</p> <p>Unload counts include all rail cars (hopper cars and boxcars) unloaded by all receivers including major port terminals, transloaders and other receivers.</p>
Cars Arrived	<p>Count of rail cars reported as arrived at the destination railway terminal.</p>
Cars Received in Interchange	<p>Count of rail cars received in interchange by each railway within a destination railway terminal. Interchange activity is tracked for the Vancouver and Thunder Bay pipelines as applicable.</p>
Cars Delivered in Interchange	<p>Count of rail cars delivered in interchange by each railway within a destination railway terminal. Interchange activity is tracked for the Vancouver and Thunder Bay pipelines as applicable.</p>
Cars Placed for Unloading	<p>Count of rail cars reported by the railways as placed loaded at the receiver's facility for unloading.</p>
Loads on Wheels at Destination	<p>Count of rail cars that remain under load within the destination railway terminal including rail cars that have been reported as placed for unloading but not yet reported as unloaded.</p>
Waiting Placement for Unloading	<p>Count of rail cars that have been reported as arrived at the destination railway terminal but not reported as placed for unloading by the railway.</p> <p>For the Ports of Vancouver, Prince Rupert and Thunder Bay the count of rail cars waiting placement for unloading is categorized by age – i.e. the elapsed time from arrival at destination to the current report date.</p>