

## SPEED READ

- Loads on wheels decreased overnight, reflecting a decline in CN volumes offset by higher CP volumes. On a net basis, volumes decreased due to lower traffic levels across all corridors.
- Network fluidity improved overnight, led by a decrease in idle car counts on CP by 27% offset by an increase in idle car counts on CN by 5%. The total count of cars for 4+ days on both railways fell 12% overnight - presently at 563 cars.
- Two days in Week 4 unloads now ahead of prior week's performance by more than 150 unloads, marking improved week over week performance across all three major ports.

---

## Loads on Wheels

- Loads on wheels decreased 5% (-412) overnight due to lower volumes on CN offset by higher volumes on CP - combined total at 7,967 and 4% below the trailing 30-day average.
- On a net basis, the decline in loads on wheels reflects reduced traffic across all corridors.
- CN volumes decreased significantly by 11% (-447) overnight and have now declined for the third consecutive day, with lower traffic across all corridors other than USA/MEX. System wide CN loads on wheels presently at 3,728 and 15% below the trailing 30-day average.
- CP volumes increased for three consecutive days, up slightly by 1% (+20) overnight, driven by an increase in volumes in the Vancouver corridor offset by a decrease in volumes in the USA/MEX and Thunder Bay corridors. CP system wide loads on wheels now at 4,005 and 9% above the trailing 30-day average.
- Vancouver presently at 3,827, fell 5% (-208) overnight and have now decreased for the third consecutive day, and 10% below the trailing 30-day average.
- The Prince Rupert pipeline now at 1,029, declined 7% (-79) overnight and 15% below the trailing 30 day-average.
- Thunder Bay volumes fell 4% (-61) overnight - now at 1,679 and 7% above the trailing 30-day average with 80% of traffic moving on CP.

## Hopper Car Rationing

- No hopper car rationing was reported for either CN or CP in week 3 and none expected in week 4.

## Loads Not Moving

- **The count of cars not moving for 48+ hours decreased for the third consecutive day, down 21% (-313) overnight, reflecting reduced counts on CP offset by increased counts on CN. Idle car counts presently at 1,182 and 29% below the trailing 30 day-average.**
- CN
  - **The count of idle cars gained 5% (+20) overnight - idle car counts presently at 299.**
  - The number of cars idle for 4+ days rose 19% (+35) overnight - now at 221 cars.
  - The count of cars not moving for 7+ days increased significantly by 166% (+63) overnight - now at 101 cars.
  - Vancouver represents 55% of all idle cars.
  - In total 40% of all idle cars are dwelling at origin locations.
- CP
  - **CP counts declined 27% (-333) overnight - idle car counts now at 883.**
  - The number of cars idle for 4+ days declined 25% (-111) overnight - now at 342 cars.
  - The number of cars idle for 7+ days gained 12% (+18) overnight - now at 164 cars, the highest seen in the last 30 days.

- Vancouver accounts for 41% of all idle cars.
- In total 23% of all idle cars are dwelling at origin locations.

### **Port Performance**

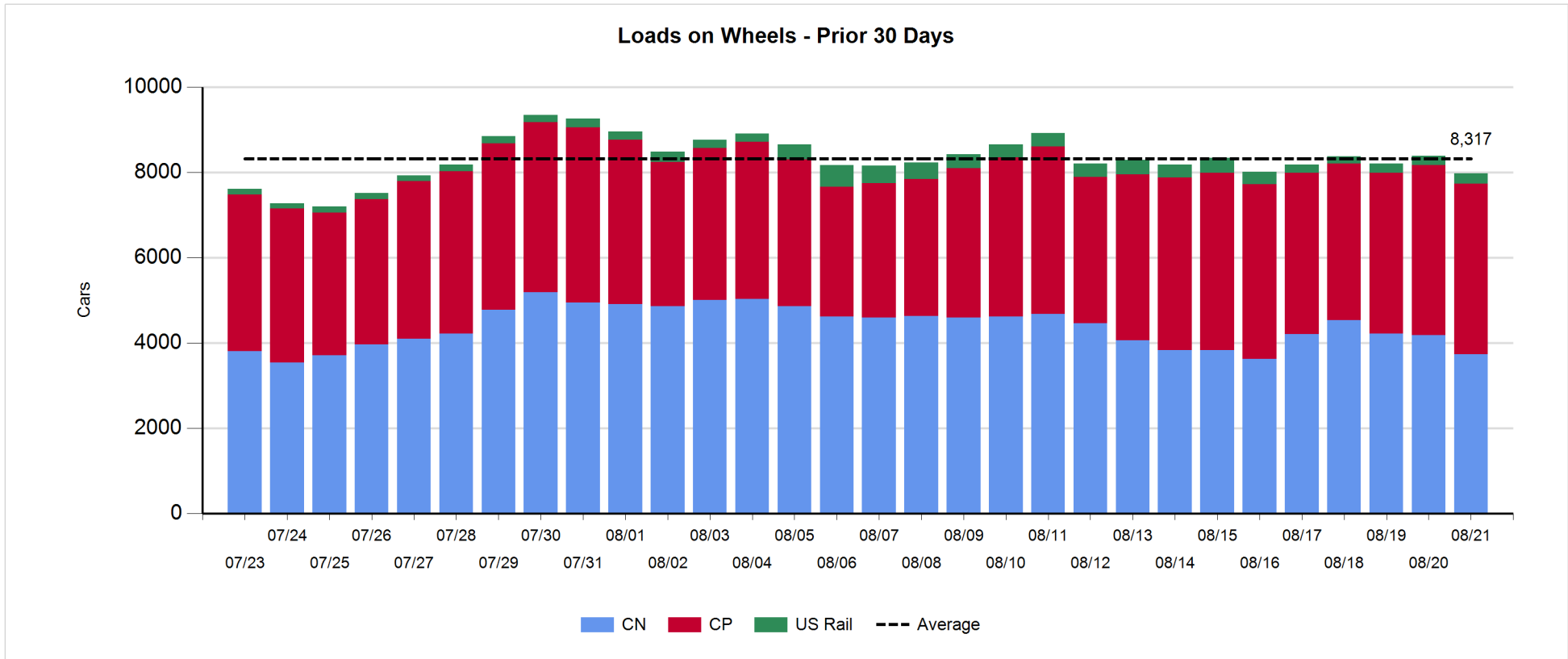
- CN and CP reported a total of 1,017 cars unloaded at the three major ports, now 16% above the trailing 30-day average. Two days in Week 4 unloads are tracking ahead of last week's pace by more than 150 unloads, marking higher unloads across all major ports.
- Vancouver
  - 633 unloads reported by CN and CP at the Port of Vancouver; CN - 360 and CP - 273. Two days in Week 4 unloads are tracking ahead of last week's performance by around 150 unloads.
  - There are nearly 1,100 cars on site at Vancouver with more than 700 cars arriving at the port in the last 24 hours.
  - CN and CP have more than 400 cars in British Columbia en route to Vancouver, with around 300 Kamloops and west and 61% of traffic currently moving on CP.
- Prince Rupert
  - Prince Rupert reported 154 unloads, now ahead of last week's unloads after two days by 30 unloads.
  - Loads on wheels now above 1,000 cars.
  - There are nearly 450 cars west of Jasper - predominantly Prince George and west.
  - There are currently 110 cars on site at Prince Rupert with more than 200 cars arriving at the port in the last 24 hours. Given the structure of the pipeline, there appears to be sufficient cars available to support unloads in the next few days.
- Thunder Bay
  - 230 unloads reported at Thunder Bay yesterday. Two days in Week 4 unloads are tracking ahead of last week's pace by 10 unloads.
  - There are 550 cars on site at Thunder Bay with more than 100 cars arriving at the port in the prior 24 hours.
  - There are about 250 cars en route to Thunder Bay from Winnipeg and east. Cars on hand and those en route should support unloads for the balance of the week.

**Daily Loads on Wheels - 8/21/2018**

	E Canada	Prince Rupert	Thunder Bay	USA/MEX	Vancouver	Total
CN	495	1,029	342	254	1,608	3,728
CP	113		1,337	377	2,178	4,005
Short Line	25				41	66
US Rail				168		168
	633	1,029	1,679	799	3,827	7,967

**Change in Loads on Wheels - Prior 24 Hours**

	E Canada	Prince Rupert	Thunder Bay	USA/MEX	Vancouver	Total
CN	-38	-79	-42	54	-342	-447
CP	0		-19	-95	134	20
Short Line	-17				0	-17
US Rail				32		32
	-55	-79	-61	-9	-208	-412

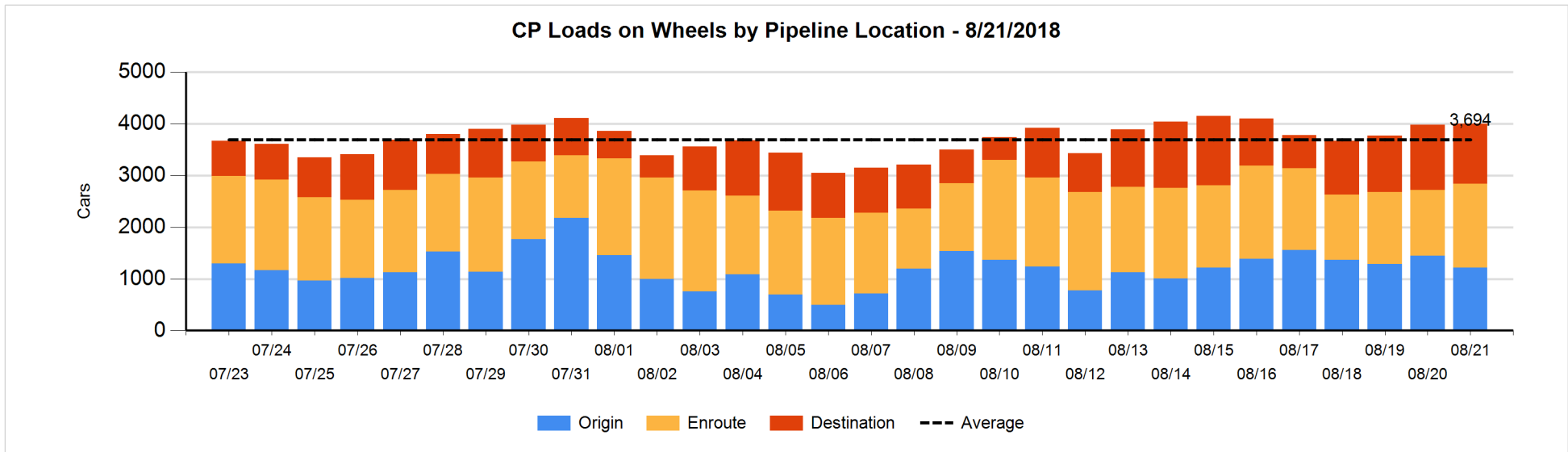
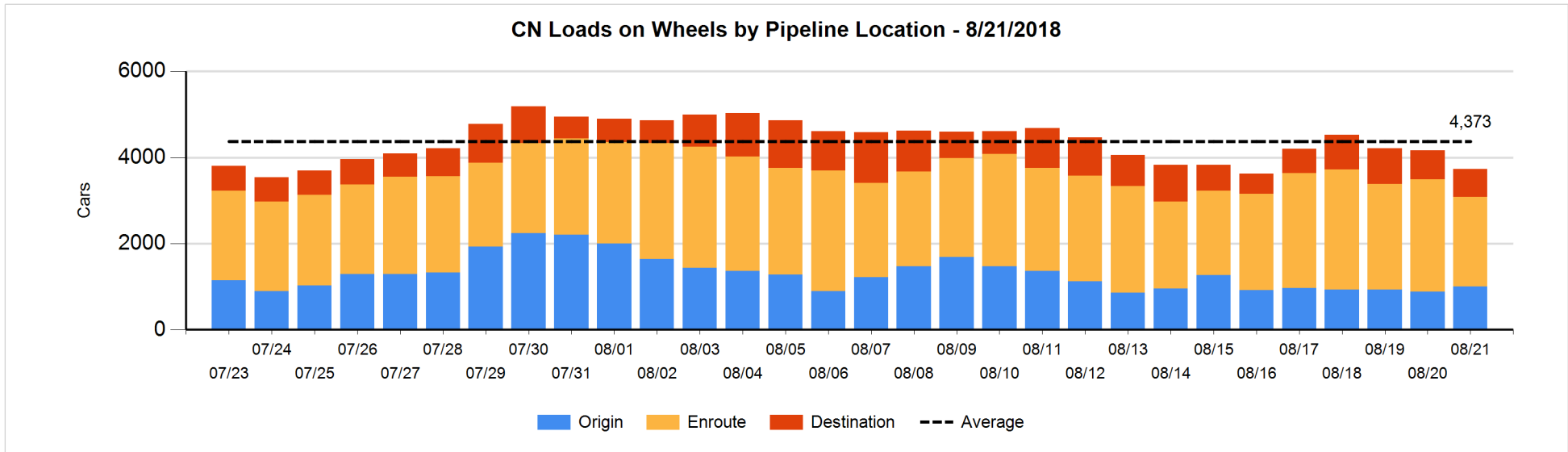


**Daily Loads on Wheels By Pipeline Location - 8/21/2018**

	E Canada	Prince Rupert	Thunder Bay	USA/MEX	Vancouver	Total
CN						
Origin	103	452	28	65	353	1,001
Enroute	366	471	235	152	854	2,078
Destination	26	106	79	37	401	649
	495	1,029	342	254	1,608	3,728
CP						
Origin	62		620	8	529	1,219
Enroute	51		249	319	1,005	1,624
Destination			468	50	644	1,162
	113		1,337	377	2,178	4,005
US Rail / Short Line						
Origin						
Enroute				57		57
Destination	25			111	41	177
	25			168	41	234

**Change in Daily Loads on Wheels By Pipeline Location - Prior 24 Hours**

	E Canada	Prince Rupert	Thunder Bay	USA/MEX	Vancouver	Total
CN						
Origin	-68	75	-45	61	101	124
Enroute	47	-218	45	-4	-401	-531
Destination	-17	64	-42	-3	-37	-35
	-38	-79	-42	54	-337	-442
CP						
Origin	-25		52	-32	-220	-225
Enroute	25		-1	-79	405	350
Destination			-70	16	-51	-105
	0		-19	-95	134	20
US Rail / Short Line						
Origin						
Enroute	-3			-8		-11
Destination	-14			40	0	26
	-17			32	0	15

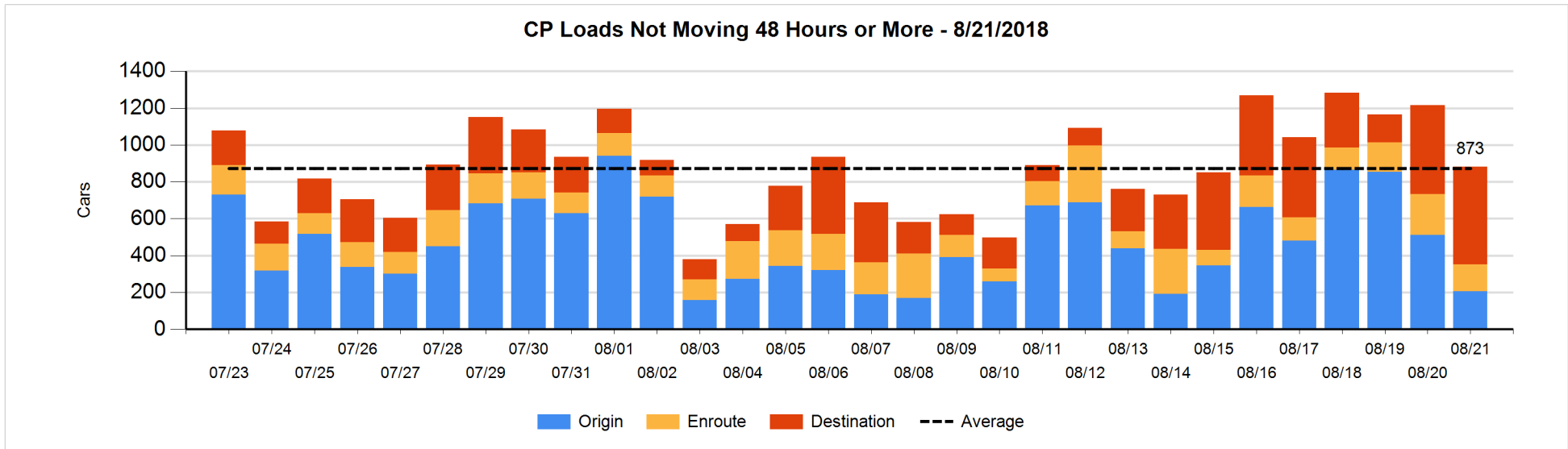
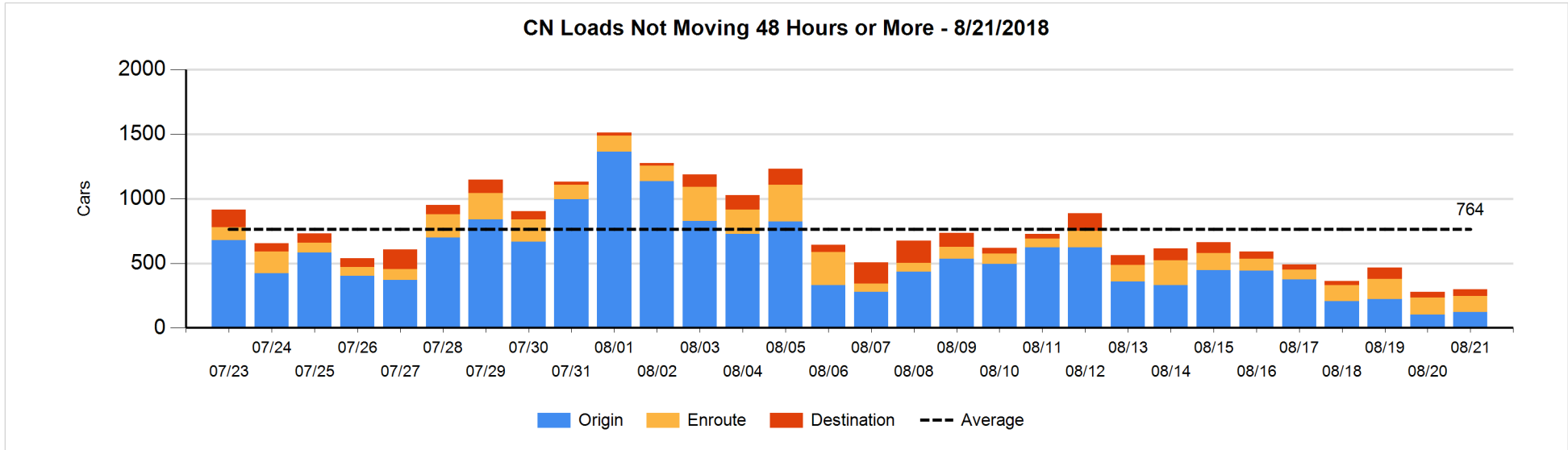


**Loads Not Moving 48 Hours or More - 8/21/2018**

	E Canada	Prince Rupert	Thunder Bay	USA/MEX	Vancouver	Total
<b>CN</b>						
Origin		49	28	1	42	120
Enroute	13	17		8	90	128
Destination	1	3		15	32	51
	14	69	28	24	164	299
<b>CP</b>						
Origin	62		12	1	132	207
Enroute			11	95	38	144
Destination			334	3	195	532
	62		357	99	365	883
<b>US Rail / Short Line</b>						
Origin						
Enroute				24		24
Destination				17	30	47
				41	30	71

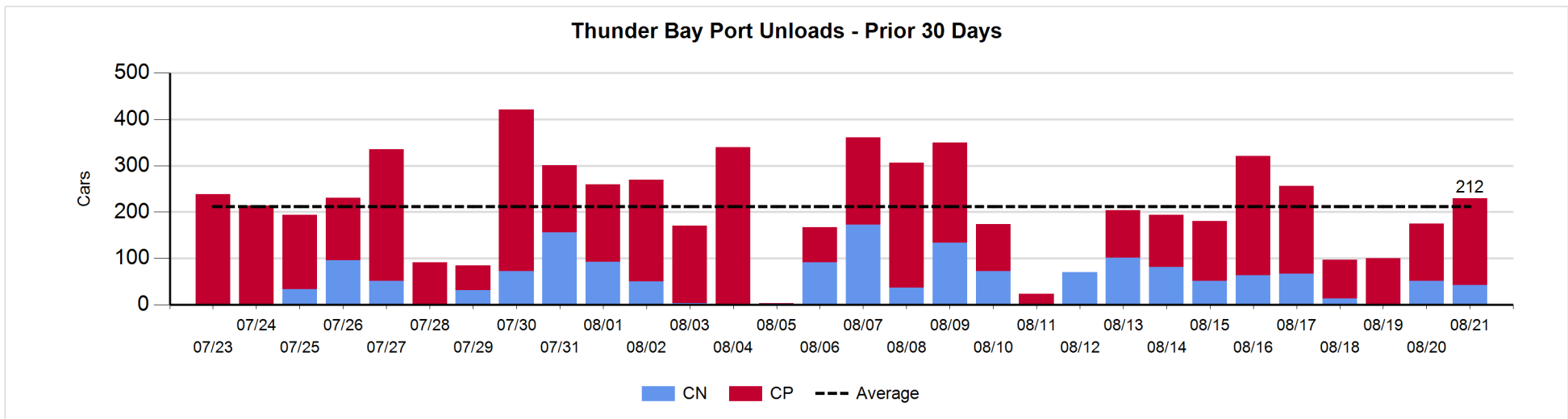
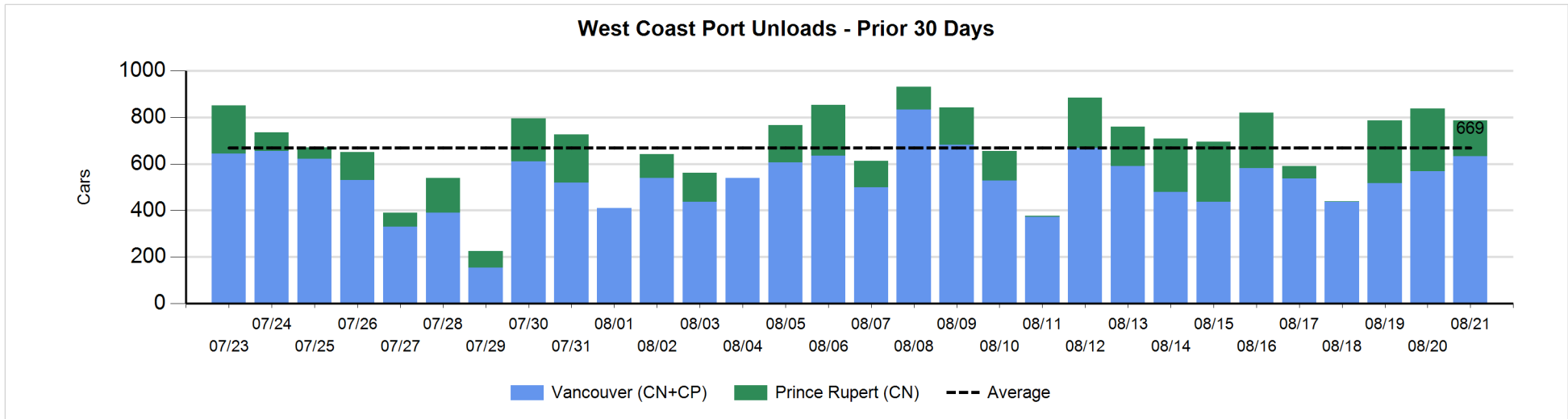
**Change in Loads Not Moving 48 Hours or More - 8/21/2018**

	E Canada	Prince Rupert	Thunder Bay	USA/MEX	Vancouver	Total
<b>CN</b>						
Origin	-7	0	28	0	-1	20
Enroute	-2	-27		1	24	-4
Destination	-1	0		2	3	4
	-10	-27	28	3	26	20
<b>CP</b>						
Origin	-25		-18	-36	-227	-306
Enroute			0	-67	-10	-77
Destination			-78	3	125	50
	-25		-96	-100	-112	-333
<b>US Rail / Short Line</b>						
Origin						
Enroute				-11		-11
Destination	-13			-2	-7	-22
	-13			-13	-7	-33



Port Unloads - 8/21/2018

	Prince Rupert	Vancouver	West Coast Total	Thunder Bay	Total
CN	154	360	514	43	557
CP		273	273	187	460
	154	633	787	230	1,017





**Port Terminal Status**

**Vancouver**

Daily Activity for 8/21/2018

	Cars Arrived	Cars Received in Interchange	Cars Delivered in Interchange	Cars Placed for Unloading	Loads on Wheels at Destination As of 8/21/2018
CN	546	261	409	411	401
CP	171	409	261	269	644
SRY	1			9	41

**Port Unloads**

	08/21	08/20	Week To Date	Last Week
CN	360	361	721	2,107
CP	273	206	479	1,472
SRY	11	6	17	40

**Age Profile of Loaded Cars Waiting Placement for Unloading**

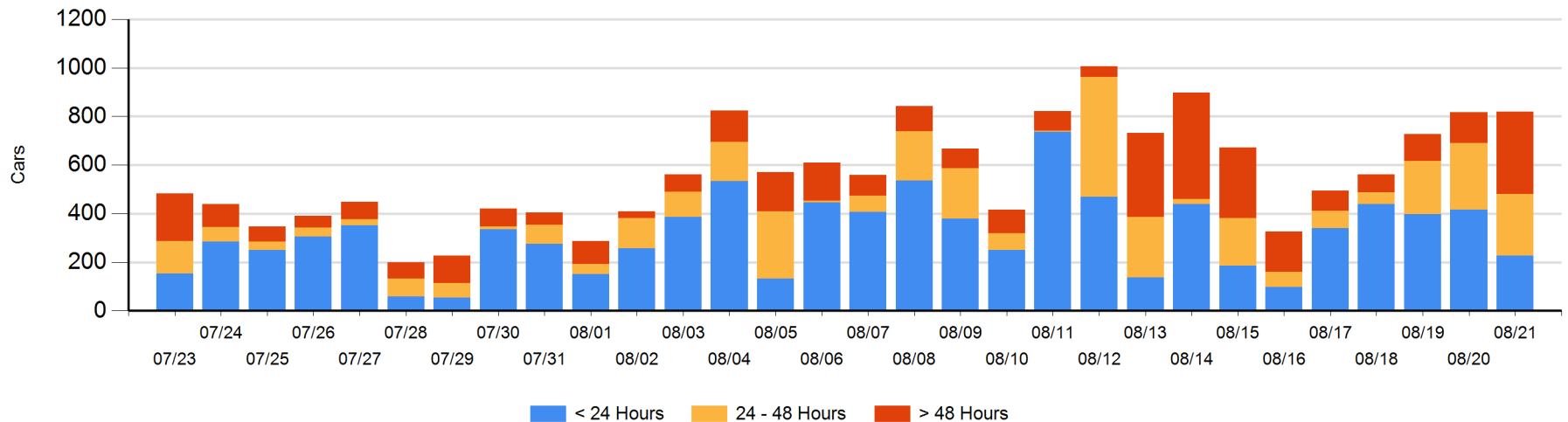
**Today**

	< 24 Hrs	24 - 48 Hrs	> 48-72 Hrs	> 72 Hrs	Total On Hand
CN	178	186	74	66	504
CP	49	67	172	26	314
SRY	1				1

**Change in Last 24 Hours**

	< 24 Hrs	24-48 Hrs	48 - 72 Hrs	> 72 Hrs
CN	-49	84	41	29
CP	-139	-107	155	-14
SRY	1			

**Loaded Cars on Hand Vancouver Waiting for Placement - Last 30 Days All Railways**



**Port Terminal Status**

**Prince Rupert**

Daily Activity for 8/21/2018

	Cars Arrived	Cars Received in Interchange	Cars Delivered in Interchange	Cars Placed for Unloading	Loads on Wheels at Destination As of 8/21/2018
CN	220			220	106

**Port Unloads**

	08/21	08/20	Week To Date	Last Week
CN	154	270	424	1,219

**Age Profile of Loaded Cars Waiting Placement for Unloading**

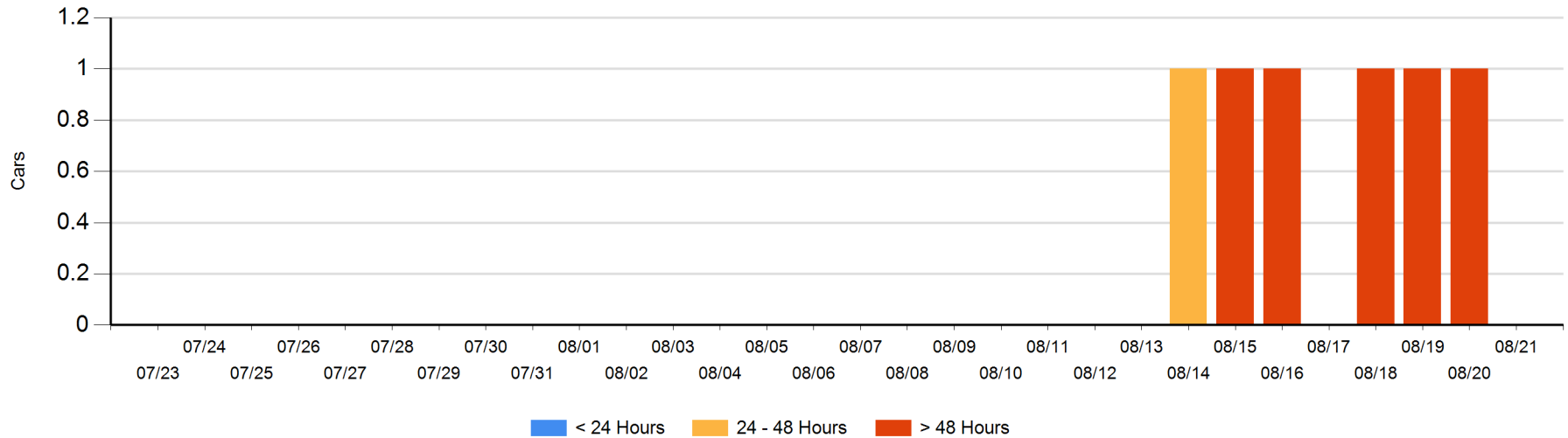
**Today**

	< 24 Hrs	24 - 48 Hrs	> 48-72 Hrs	> 72 Hrs	Total On Hand
CN					0

**Change in Last 24 Hours**

	< 24 Hrs	24-48 Hrs	48 - 72 Hrs	> 72 Hrs
CN				-1

Loaded Cars on Hand Prince Rupert Waiting for Placement - Last 30 Days All Railways



**Port Terminal Status**

**Thunder Bay**

Daily Activity for 8/21/2018

	Cars Arrived	Cars Received in Interchange	Cars Delivered in Interchange	Cars Placed for Unloading	Loads on Wheels at Destination As of 8/21/2018
CN	1			30	79
CP	116			72	468

**Port Unloads**

	08/21	08/20	Week To Date	Last Week
CN	43	51	94	378
CP	187	124	311	974

**Age Profile of Loaded Cars Waiting Placement for Unloading**

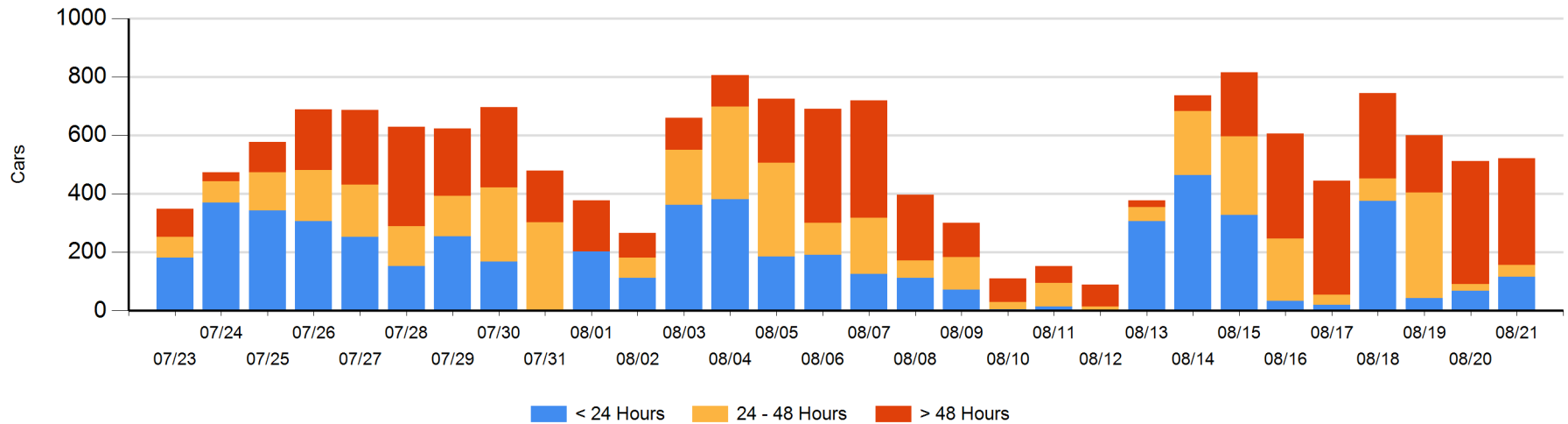
**Today**

	< 24 Hrs	24 - 48 Hrs	> 48-72 Hrs	> 72 Hrs	Total On Hand
CN	1	39	18	21	79
CP	116		4	322	442

**Change in Last 24 Hours**

	< 24 Hrs	24-48 Hrs	48 - 72 Hrs	> 72 Hrs
CN	-68	21	10	8
CP	116	-4	-251	177

**Loaded Cars on Hand Thunder Bay Waiting for Placement - Last 30 Days All Railways**



## Measurement Definitions

Loads on Wheels	<p>Count of loaded rail cars including all rail cars that have been released loaded at origin and have not been reported by the railway as unloaded at destination.</p> <p>Counts include all rail cars (hopper cars and boxcars) moving within a pipeline.</p>
Loads Not Moving	<p>Loaded rail cars for which the railways have not reported a movement event for 48 hours or more whether the rail car is at origin, enroute or at destination.</p>
Port Unloads	<p>Count of rail cars reported by railways as unloaded at the western port destinations of Vancouver, Prince Rupert and Thunder Bay.</p> <p>Unload counts include all rail cars (hopper cars and boxcars) unloaded by all receivers including major port terminals, transloaders and other receivers.</p>
Cars Arrived	<p>Count of rail cars reported as arrived at the destination railway terminal.</p>
Cars Received in Interchange	<p>Count of rail cars received in interchange by each railway within a destination railway terminal. Interchange activity is tracked for the Vancouver and Thunder Bay pipelines as applicable.</p>
Cars Delivered in Interchange	<p>Count of rail cars delivered in interchange by each railway within a destination railway terminal. Interchange activity is tracked for the Vancouver and Thunder Bay pipelines as applicable.</p>
Cars Placed for Unloading	<p>Count of rail cars reported by the railways as placed loaded at the receiver's facility for unloading.</p>
Loads on Wheels at Destination	<p>Count of rail cars that remain under load within the destination railway terminal including rail cars that have been reported as placed for unloading but not yet reported as unloaded.</p>
Waiting Placement for Unloading	<p>Count of rail cars that have been reported as arrived at the destination railway terminal but not reported as placed for unloading by the railway.</p> <p>For the Ports of Vancouver, Prince Rupert and Thunder Bay the count of rail cars waiting placement for unloading is categorized by age – i.e. the elapsed time from arrival at destination to the current report date.</p>