

SPEED READ

- Loads on wheels increased overnight, marking an increase in CN volumes offset by lower CP volumes. On a net basis, volumes increased due to higher traffic in the Prince Rupert, Thunder Bay and USA/MEX corridors offset by lower traffic in the Vancouver and E. Canada corridors.
- Network fluidity improved overnight, led by an increase in idle car counts on CN by 36% offset by a decline in idle car counts on CP by 47%. The total count of cars for 4+ days on both railways declined 26% overnight - now at 154 cars, the lowest seen in the last 30 days.
- Four days in Week 5 unloads now ahead of prior week's performance by about 450 unloads, reflecting improved week over week performance at Vancouver and Thunder Bay offset by lower unloads at Prince Rupert.

Loads on Wheels

- Loads on wheels increased 2% (+172) overnight, due to higher volumes on CN offset by lower volumes on CP - combined total at 7,924 and 5% below the trailing 30-day average.
- On a net basis, the rise in loads on wheels reflects higher traffic levels in the Prince Rupert, Thunder Bay and USA/MEX corridors offset by reduced traffic in the Vancouver and E. Canada corridors.
- CN volumes gained 9% (+326) overnight, with higher volumes across all corridors other than E. Canada. System wide CN loads on wheels currently at 3,800 and 11% below the trailing 30-day average.
- CP volumes decreased 4% (-151) overnight, driven by a decline in traffic across all corridors other than Thunder Bay. CP system wide loads on wheels currently at 3,896 and 3% above the trailing 30-day average.
- Vancouver currently at 4,457, decreased 2% (-93) overnight and 2% above the trailing 30-day average.
- The Prince Rupert pipeline currently at 905, increased significantly by 19% (+142) overnight and 21% below the trailing 30 day-average.
- Thunder Bay volumes rose 10% (+104) overnight - currently at 1,097 and 22% below the trailing 30-day average with 64% of traffic moving on CP.

Hopper Car Rationing

- No hopper car rationing was reported for either CN or CP in week 4 and none expected in week 5.

Loads Not Moving

- **The count of cars not moving for 48+ hours declined 26% (-285) overnight, marking higher counts on CN offset by reduced counts on CP. Idle car counts now at 817, the lowest seen in the last 30 days, and 45% below the trailing 30 day-average.**
- CN
 - **The count of idle cars for 48+ hours gained 36% (+100) overnight - currently at 381 cars.**
 - The number of cars idle for 4+ days declined 31% (-20) overnight and have now decreased for the third consecutive day - presently at 44 cars, the lowest seen in the last 30 days.
 - The count of cars not moving for 7+ days fell 8% (-3) overnight - now at 34 cars.
 - Vancouver represents 67% of all idle cars.
 - In total 17% of all idle cars are dwelling at origin locations.
- CP
 - **CP idle car counts for 48+ hours declined significantly by 47% (-385) overnight - now at 436 cars.**
 - The number of cars idle for 4+ days decreased 24% (-34) overnight - currently at 110 cars, the lowest seen in the last 30 days.

- The number of cars idle for 7+ days surged by 168% (+37) overnight - now at 59 cars.
- Vancouver accounts for 72% of all idle cars.
- In total 69% of all idle cars are dwelling at origin locations.

Port Performance

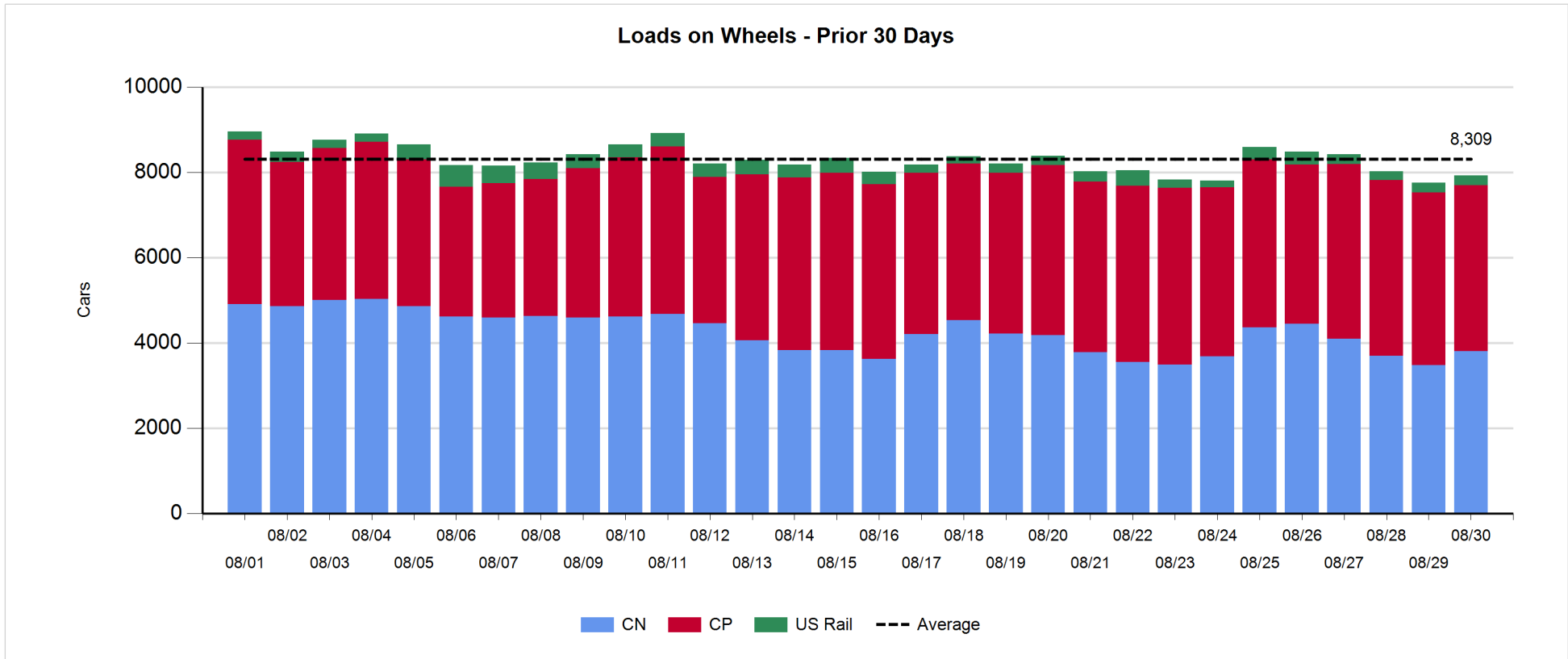
- CN and CP reported a total of 1,115 cars unloaded at the three major ports, now 23% above the trailing 30-day average. Four days in Week 5 unloads are tracking ahead of last week's pace by about 450 unloads, reflecting higher unloads at Vancouver and Thunder Bay offset by lower unloads at Prince Rupert.
- Vancouver
 - 688 unloads reported by CN and CP at the Port of Vancouver; CN - 376 and CP - 312. Four days in Week 5 unloads are tracking ahead of last week's performance by 250 unloads.
 - There are 900 cars on site at Vancouver with 300 cars arriving at the port in the last 24 hours.
 - CN and CP have 900 cars in British Columbia en route to Vancouver, with 450 Kamloops and west and 61% of traffic currently moving on CP.
- Prince Rupert
 - Prince Rupert reported 160 unloads, now behind last week's unloads after four days by more than 250 unloads.
 - Loads on wheels now below 1,000 cars.
 - There are more than 400 cars west of Jasper en route to Prince Rupert - predominantly Prince George and west.
 - There are 5 cars on site at Prince Rupert with zero cars arriving at the port in the last 24 hours. Given the structure of the pipeline, there appears to be sufficient cars available to support unloads in the next few days.
- Thunder Bay
 - 267 unloads reported at Thunder Bay yesterday. Four days in Week 5 unloads are tracking ahead of last week's pace by nearly 500 unloads.
 - There are more than 450 cars on site at Thunder Bay with fewer than 400 cars arriving at the port in the prior 24 hours.
 - There are less than 150 cars en route to Thunder Bay from Winnipeg and east. Cars on hand and those en route should support unloads for the balance of the week.

Daily Loads on Wheels - 8/30/2018

	E Canada	Prince Rupert	Thunder Bay	USA/MEX	Vancouver	Total
CN	249	905	392	319	1,935	3,800
CP	337		705	356	2,498	3,896
Short Line	1				24	25
US Rail				203		203
	587	905	1,097	878	4,457	7,924

Change in Loads on Wheels - Prior 24 Hours

	E Canada	Prince Rupert	Thunder Bay	USA/MEX	Vancouver	Total
CN	-3	142	56	83	48	326
CP	-52		48	-10	-137	-151
Short Line	-3				-4	-7
US Rail				4		4
	-58	142	104	77	-93	172

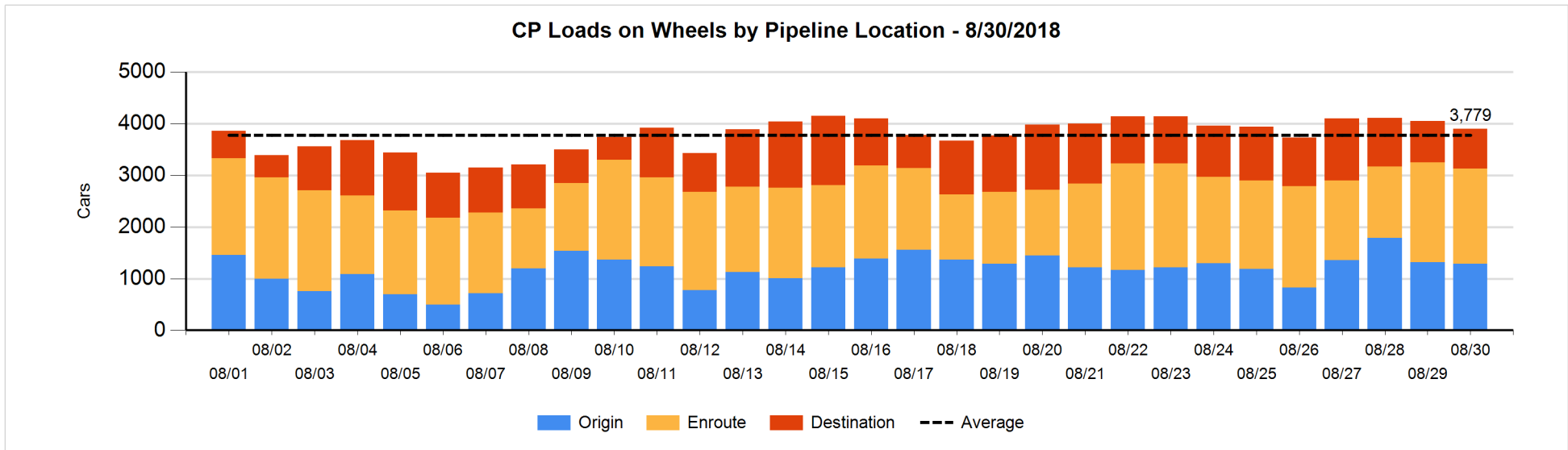
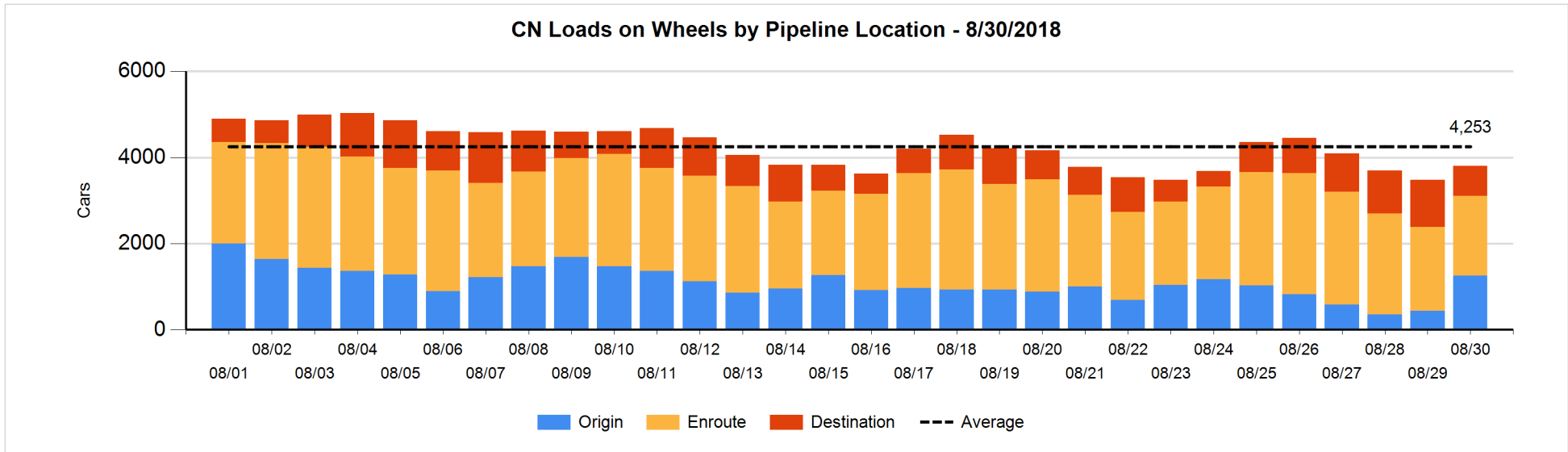


Daily Loads on Wheels By Pipeline Location - 8/30/2018

	E Canada	Prince Rupert	Thunder Bay	USA/MEX	Vancouver	Total
CN						
Origin	40	302	201	147	560	1,250
Enroute	156	598	114	130	855	1,853
Destination	53	5	77	42	520	697
	249	905	392	319	1,935	3,800
CP						
Origin	4		187	128	963	1,282
Enroute	333		129	215	1,172	1,849
Destination			389	13	363	765
	337		705	356	2,498	3,896
US Rail / Short Line						
Origin						
Enroute	1			100		101
Destination				103	24	127
	1			203	24	228

Change in Daily Loads on Wheels By Pipeline Location - Prior 24 Hours

	E Canada	Prince Rupert	Thunder Bay	USA/MEX	Vancouver	Total
CN						
Origin	30	299	201	118	167	815
Enroute	-14	3	-3	-42	-40	-96
Destination	-19	-160	-142	7	-79	-393
	-3	142	56	83	48	326
CP						
Origin	-1		52	52	-140	-37
Enroute	-51		-260	-75	307	-79
Destination			256	13	-304	-35
	-52		48	-10	-137	-151
US Rail / Short Line						
Origin						
Enroute	0			-9		-9
Destination	-3			13	-4	6
	-3			4	-4	-3

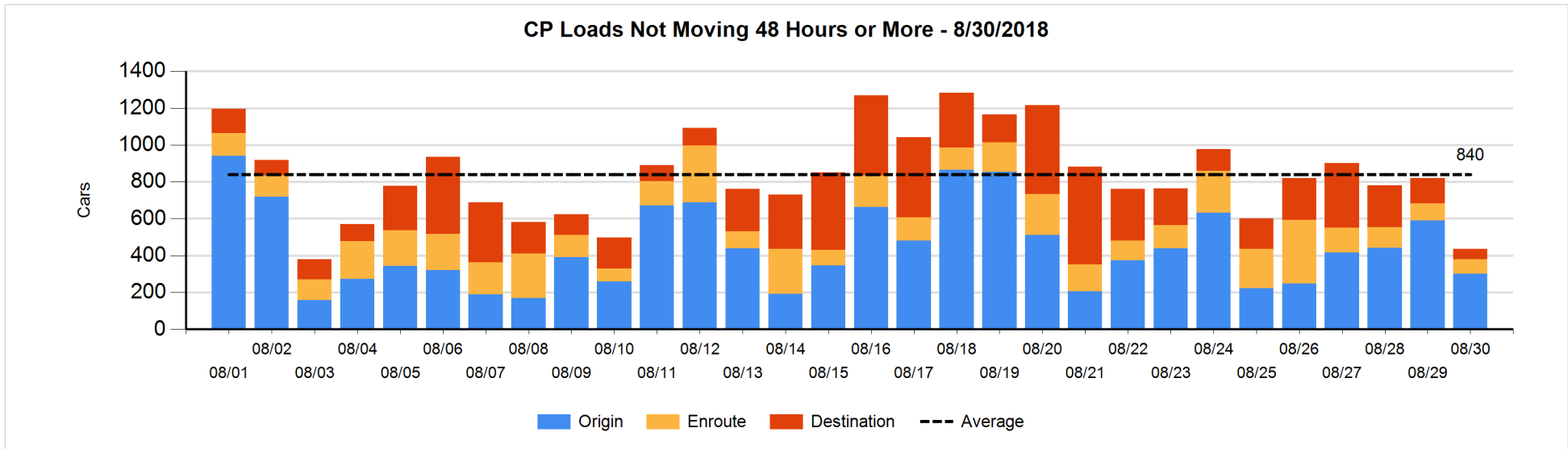
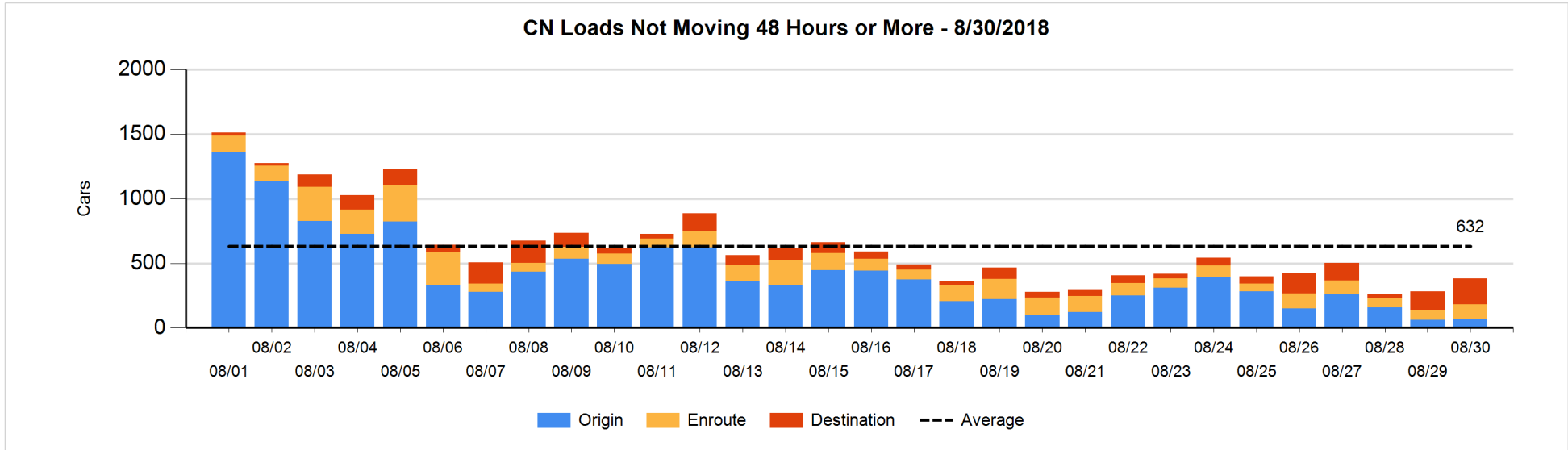


Loads Not Moving 48 Hours or More - 8/30/2018

	E Canada	Prince Rupert	Thunder Bay	USA/MEX	Vancouver	Total
CN						
Origin				4	62	66
Enroute	21	5		66	23	115
Destination	1	5	14	10	170	200
	22	10	14	80	255	381
CP						
Origin	3		16	22	260	301
Enroute	3		12	54	10	79
Destination			11		45	56
	6		39	76	315	436
US Rail / Short Line						
Origin						
Enroute	1			21		22
Destination				29	3	32
	1			50	3	54

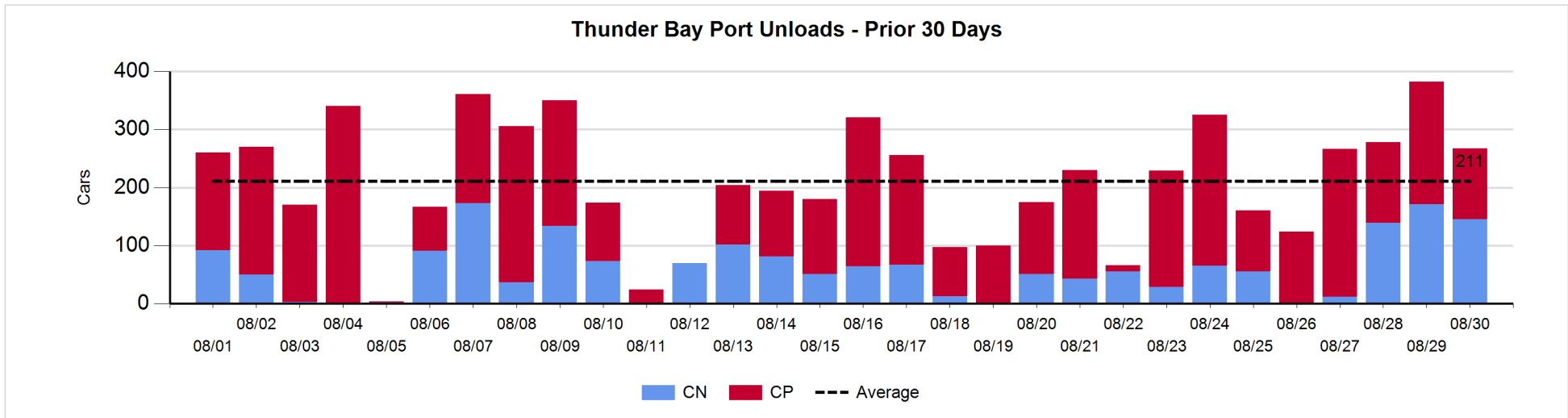
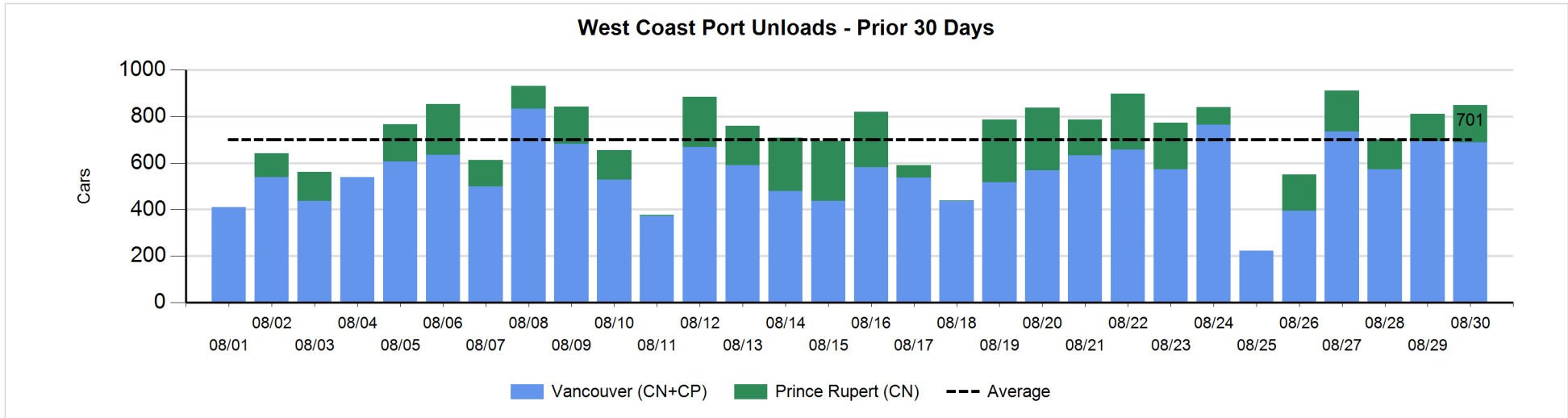
Change in Loads Not Moving 48 Hours or More - 8/30/2018

	E Canada	Prince Rupert	Thunder Bay	USA/MEX	Vancouver	Total
CN						
Origin	-5			-5	13	3
Enroute	6	-11		51	-4	42
Destination	0	-9	1	9	54	55
	1	-20	1	55	63	100
CP						
Origin	1		12	-53	-250	-290
Enroute	0		-1	-1	-12	-14
Destination			-87		6	-81
	1		-76	-54	-256	-385
US Rail / Short Line						
Origin						
Enroute	0			-25		-25
Destination				-12	1	-11
	0			-37	1	-36



Port Unloads - 8/30/2018

	Prince Rupert	Vancouver	West Coast Total	Thunder Bay	Total
CN	160	376	536	145	681
CP		312	312	122	434
	160	688	848	267	1,115



Port Terminal Status

Vancouver

Daily Activity for 8/30/2018

	Cars Arrived	Cars Received in Interchange	Cars Delivered in Interchange	Cars Placed for Unloading	Loads on Wheels at Destination As of 8/30/2018
CN	278	112	47	400	520
CP	14	47	113	309	363
SRY		1		9	24

Port Unloads

	08/30	08/29	Week To Date	Last Week
CN	376	275	1,303	1,779
CP	312	418	1,385	2,033
SRY	9	6	26	53

Age Profile of Loaded Cars Waiting Placement for Unloading

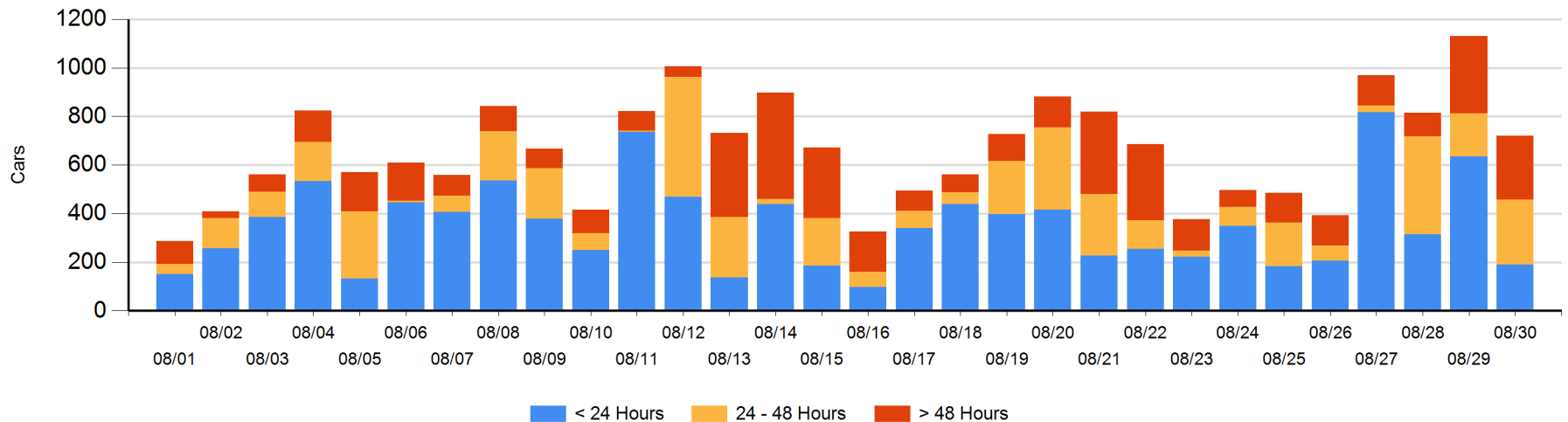
Today

	< 24 Hrs	24 - 48 Hrs	> 48-72 Hrs	> 72 Hrs	Total On Hand
CN	178	79	124	56	437
CP	13	187	18	66	284
SRY					0

Change in Last 24 Hours

	< 24 Hrs	24-48 Hrs	48 - 72 Hrs	> 72 Hrs
CN	35	-70	-2	13
CP	-478	158	-89	24
SRY	-1			

Loaded Cars on Hand Vancouver Waiting for Placement - Last 30 Days All Railways



Port Terminal Status

Prince Rupert

Daily Activity for 8/30/2018

Cars Arrived	Cars Received in Interchange	Cars Delivered in Interchange	Cars Placed for Unloading	Loads on Wheels at Destination As of 8/30/2018
				5
CN				

Port Unloads

	08/30	08/29	Week To Date	Last Week
CN	160	118	585	1,096

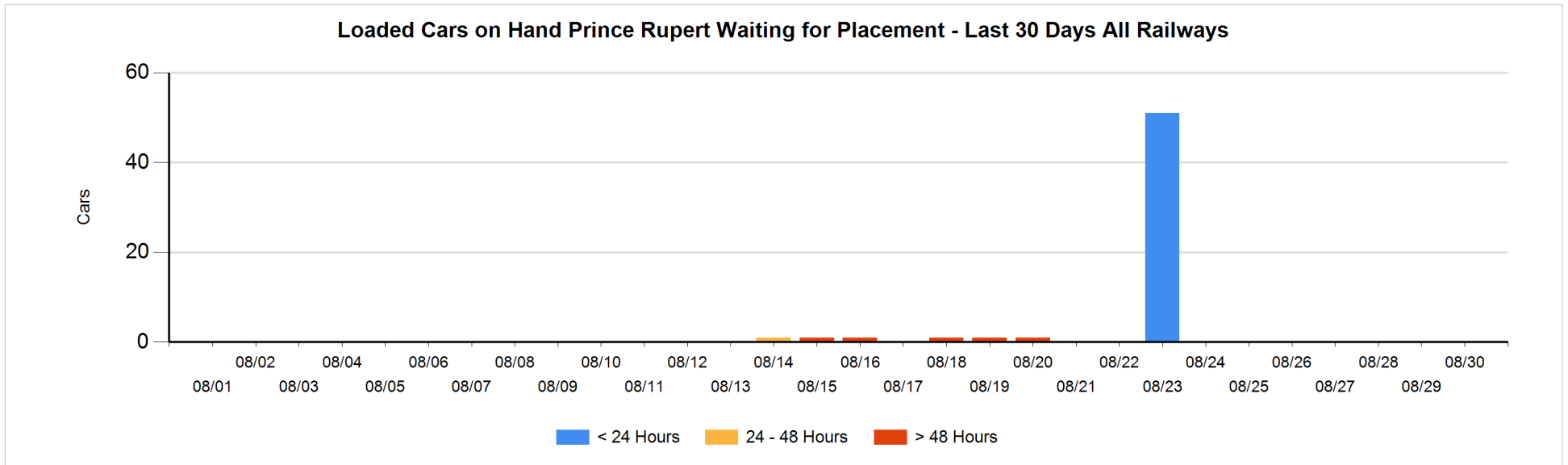
Age Profile of Loaded Cars Waiting Placement for Unloading

Today

< 24 Hrs	24 - 48 Hrs	> 48-72 Hrs	> 72 Hrs	Total On Hand
				0
CN				

Change in Last 24 Hours

< 24 Hrs	24-48 Hrs	48 - 72 Hrs	> 72 Hrs
CN			



Port Terminal Status

Thunder Bay

Daily Activity for 8/30/2018

	Cars Arrived	Cars Received in Interchange	Cars Delivered in Interchange	Cars Placed for Unloading	Loads on Wheels at Destination As of 8/30/2018
CN	3			118	77
CP	380			93	389

Port Unloads

	08/30	08/29	Week To Date	Last Week
CN	145	171	467	298
CP	122	211	726	1,011

Age Profile of Loaded Cars Waiting Placement for Unloading

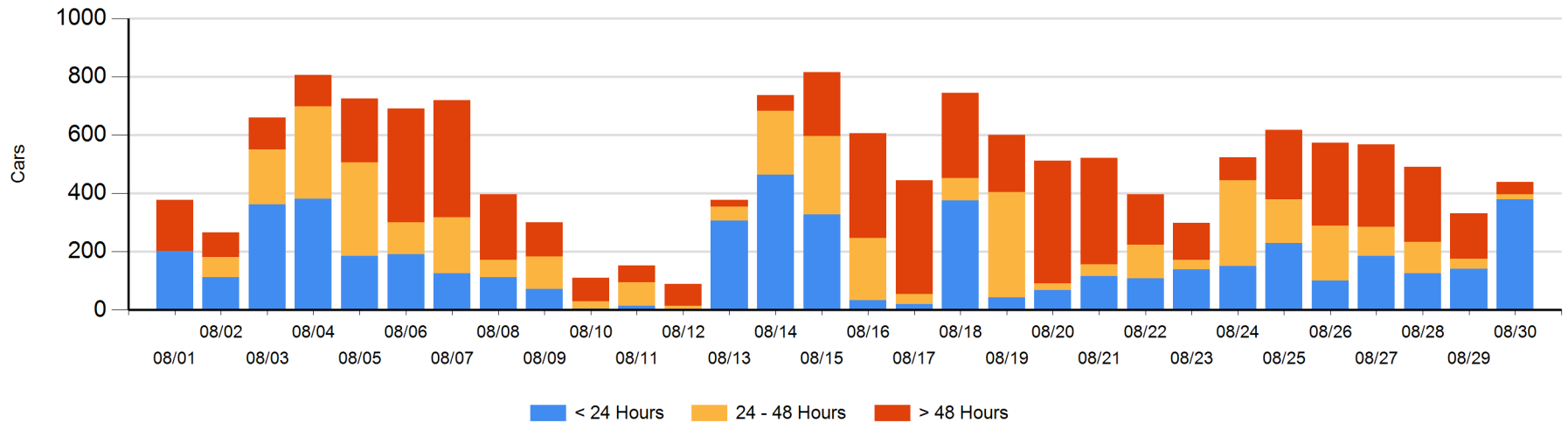
Today

	< 24 Hrs	24 - 48 Hrs	> 48-72 Hrs	> 72 Hrs	Total On Hand
CN	3	15	34		52
CP	377	1		8	386

Change in Last 24 Hours

	< 24 Hrs	24-48 Hrs	48 - 72 Hrs	> 72 Hrs
CN	-130	-19	34	
CP	369	1	-74	-75

Loaded Cars on Hand Thunder Bay Waiting for Placement - Last 30 Days All Railways



Measurement Definitions

Loads on Wheels	<p>Count of loaded rail cars including all rail cars that have been released loaded at origin and have not been reported by the railway as unloaded at destination.</p> <p>Counts include all rail cars (hopper cars and boxcars) moving within a pipeline.</p>
Loads Not Moving	<p>Loaded rail cars for which the railways have not reported a movement event for 48 hours or more whether the rail car is at origin, enroute or at destination.</p>
Port Unloads	<p>Count of rail cars reported by railways as unloaded at the western port destinations of Vancouver, Prince Rupert and Thunder Bay.</p> <p>Unload counts include all rail cars (hopper cars and boxcars) unloaded by all receivers including major port terminals, transloaders and other receivers.</p>
Cars Arrived	<p>Count of rail cars reported as arrived at the destination railway terminal.</p>
Cars Received in Interchange	<p>Count of rail cars received in interchange by each railway within a destination railway terminal. Interchange activity is tracked for the Vancouver and Thunder Bay pipelines as applicable.</p>
Cars Delivered in Interchange	<p>Count of rail cars delivered in interchange by each railway within a destination railway terminal. Interchange activity is tracked for the Vancouver and Thunder Bay pipelines as applicable.</p>
Cars Placed for Unloading	<p>Count of rail cars reported by the railways as placed loaded at the receiver's facility for unloading.</p>
Loads on Wheels at Destination	<p>Count of rail cars that remain under load within the destination railway terminal including rail cars that have been reported as placed for unloading but not yet reported as unloaded.</p>
Waiting Placement for Unloading	<p>Count of rail cars that have been reported as arrived at the destination railway terminal but not reported as placed for unloading by the railway.</p> <p>For the Ports of Vancouver, Prince Rupert and Thunder Bay the count of rail cars waiting placement for unloading is categorized by age – i.e. the elapsed time from arrival at destination to the current report date.</p>