

## SPEED READ

- Loads on wheels increased overnight, reflecting an increase in both CN and CP volumes. On a net basis, volumes rose due to higher traffic in the Vancouver, Prince Rupert and Thunder Bay corridors offset by reduced volumes in the E. Canada and USA/MEX corridors.
- Network fluidity deteriorated overnight, led by an increase in idle car counts on both CN and CP by 16% and 19%, respectively. The total count of cars for 4+ days on both railways declined 14% overnight - now at 355 cars.
- Week 5 unloads finished ahead of Week 4's performance by more than 650 unloads. One day in Week 6 unloads now behind prior week's performance by nearly 1,100 unloads, reflecting reduced unloads across all three major ports.

---

## Loads on Wheels

- Loads on wheels increased 6% (+499) overnight, due to higher volumes on both CN and CP - combined total at 9,175, the highest seen in the last 30 days, and 11% above the trailing 30-day average.
- On a net basis, the increase in loads on wheels reflects higher traffic levels in the Vancouver, Prince Rupert and Thunder Bay corridors offset by reduced volumes in the E. Canada and USA/MEX corridors.
- CN volumes increased 8% (+340) overnight, with higher traffic in the Vancouver, Prince Rupert and Thunder Bay corridors offset by lower traffic in the E. Canada and USA/MEX corridors. System wide CN loads on wheels now at 4,515 and 9% above the trailing 30-day average.
- CP volumes gained 3% (+107) overnight and have now increased for the third consecutive day, driven by an increase in traffic in the Vancouver and Thunder Bay corridors offset by a decline in volumes in the USA/MEX and E. Canada corridors. CP system wide loads on wheels now at 4,305, the highest seen in the last 30 days, and 13% above the trailing 30-day average.
- Vancouver presently at 4,825, the highest seen in the last 30 days, increased 10% (+432) overnight and 11% above the trailing 30-day average.
- The Prince Rupert pipeline now at 1,341, rose 9% (+106) overnight and have now increased for three consecutive days, now 17% above the trailing 30-day average.
- Thunder Bay volumes increased for the third consecutive day, up 3% (+39) overnight - now at 1,597 and 16% above the trailing 30-day average with 56% of traffic moving on CP.

## Hopper Car Rationing

- No hopper car rationing was reported for either CN or CP in week 5 and none expected in week 6.

## Loads Not Moving

- **The count of cars not moving for 48+ hours increased 17% (+239) overnight, reflecting higher counts on both CN and CP. Idle car counts now at 1,609 and 19% above the trailing 30-day average.**
- CN
  - **The count of idle cars for 48+ hours gained 16% (+107) overnight - now at 797 cars.**
  - The number of cars idle for 4+ days declined 6% (-6) overnight and have now decreased for the third consecutive day - currently at 97 cars.
  - The count of cars not moving for 7+ days increased 48% (+10) overnight - now at 31 cars.
  - Vancouver represents 25% of all idle cars.
  - In total 43% of all idle cars are dwelling at origin locations.
- CP
  - **CP idle car counts for 48+ hours rose 19% (+132) overnight - now at 812 cars.**

- The number of cars idle for 4+ days fell 17% (-52) overnight - now at 258 cars.
- The number of cars idle for 7+ days increased 40% (+19) overnight - now at 67 cars.
- Vancouver accounts for 53% of all idle cars.
- In total 69% of all idle cars are dwelling at origin locations.

### **Port Performance**

- CN and CP reported a total of 94 cars unloaded at the three major ports, now 90% below the trailing 30 day-average. Week 5 unloads concluded ahead of Week 4's performance by more than 650 unloads. One day in Week 6 unloads are tracking behind last week's pace by nearly 1,100 unloads, reflecting lower unloads across all three ports.
- Vancouver
  - 43 unloads, the lowest seen in the last 30 days, was reported by CN and CP at the Port of Vancouver; CN - 16 and CP - 27. One day in Week 6 unloads are tracking behind last week's performance by nearly 700 unloads.
  - There are 1,600 cars on site at Vancouver with fewer than 1,200 cars arriving at the port in the last 24 hours.
  - CN and CP have fewer than 1,050 cars in British Columbia en route to Vancouver, with about 400 Kamloops and west and 52% of traffic currently moving on CN.
- Prince Rupert
  - Prince Rupert reported 1 unload, now behind last week's unloads after one day by more than 150 unloads.
  - Loads on wheels now above 1,000 cars.
  - There are 350 cars west of Jasper en route to Prince Rupert - all Prince George and west.
  - There are more than 400 cars on site at Prince Rupert with more than 150 cars arriving at the port in the last 24 hours. Given the structure of the pipeline, there appears to be sufficient cars available to support unloads in the next few days.
- Thunder Bay
  - 50 unloads reported at Thunder Bay yesterday. One day in Week 6 unloads are tracking behind last week's pace by more than 200 unloads.
  - There are more than 700 cars on site at Thunder Bay with less than 250 cars arriving at the port in the prior 24 hours.
  - There are more than 150 cars en route to Thunder Bay from Winnipeg and east. Cars on hand and those en route should support unloads in the next few days.

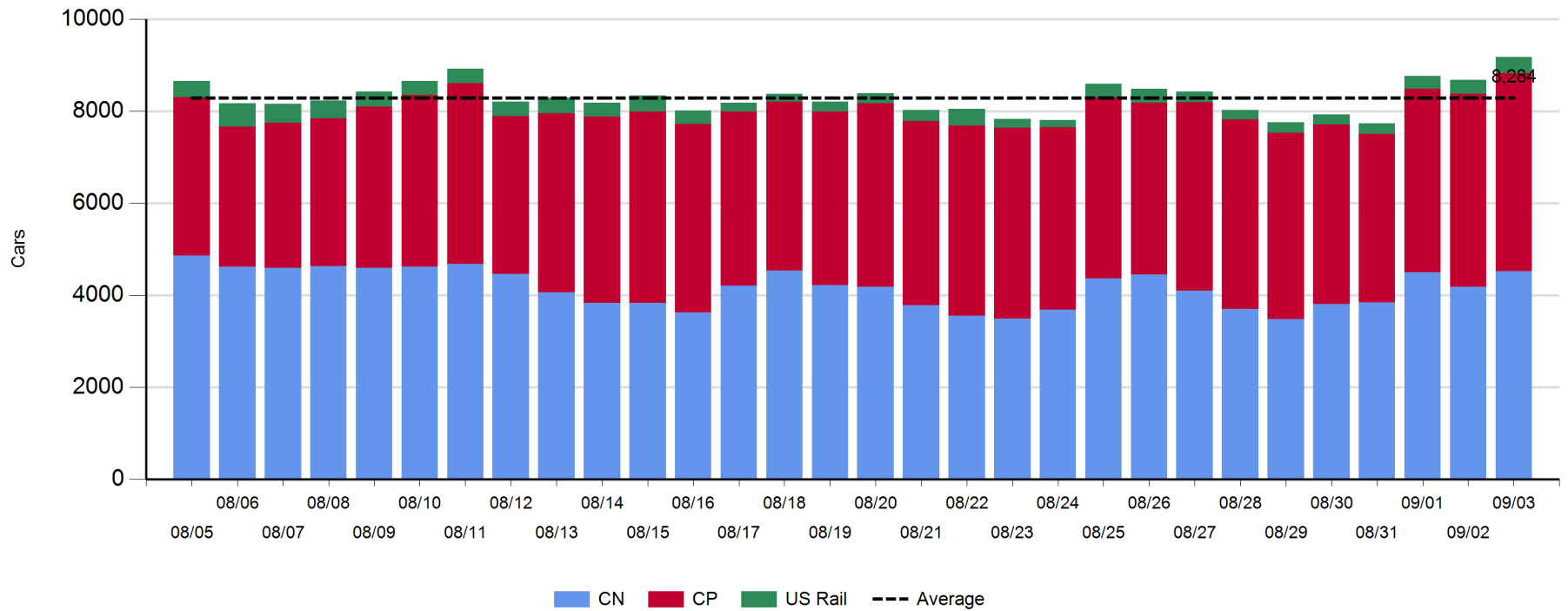
**Daily Loads on Wheels - 9/3/2018**

	E Canada	Prince Rupert	Thunder Bay	USA/MEX	Vancouver	Total
CN	328	1,341	697	255	1,894	4,515
CP	179		900	307	2,919	4,305
Short Line	48				12	60
US Rail				295		295
	555	1,341	1,597	857	4,825	9,175

**Change in Loads on Wheels - Prior 24 Hours**

	E Canada	Prince Rupert	Thunder Bay	USA/MEX	Vancouver	Total
CN	-23	106	9	-6	254	340
CP	-52		30	-54	183	107
Short Line	0				-5	-5
US Rail				57		57
	-75	106	39	-3	432	499

**Loads on Wheels - Prior 30 Days**

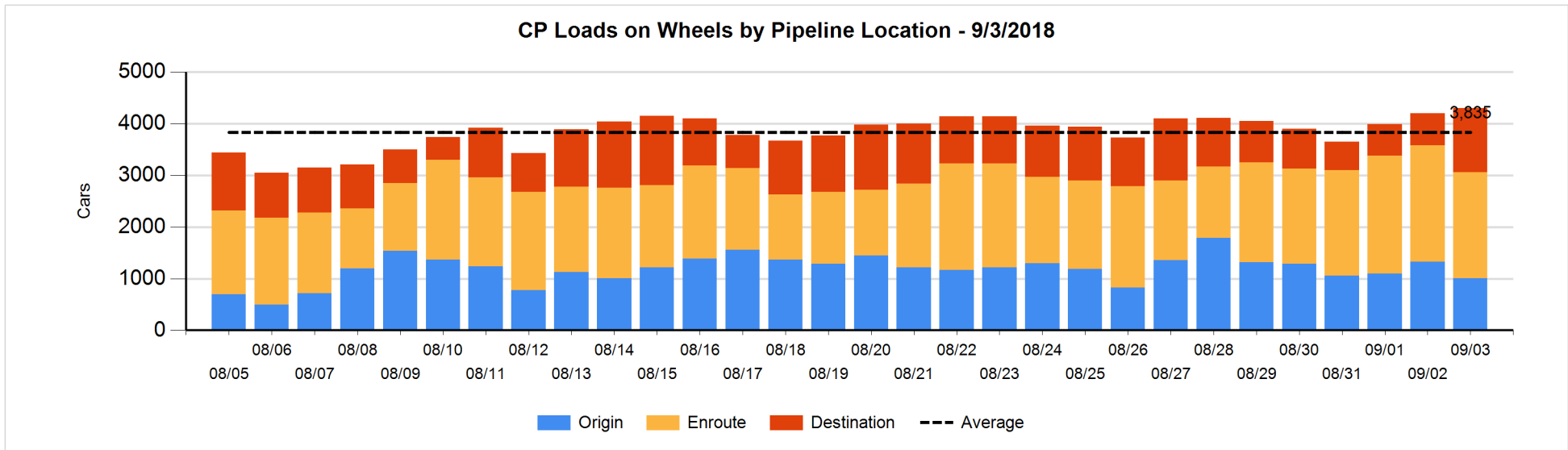
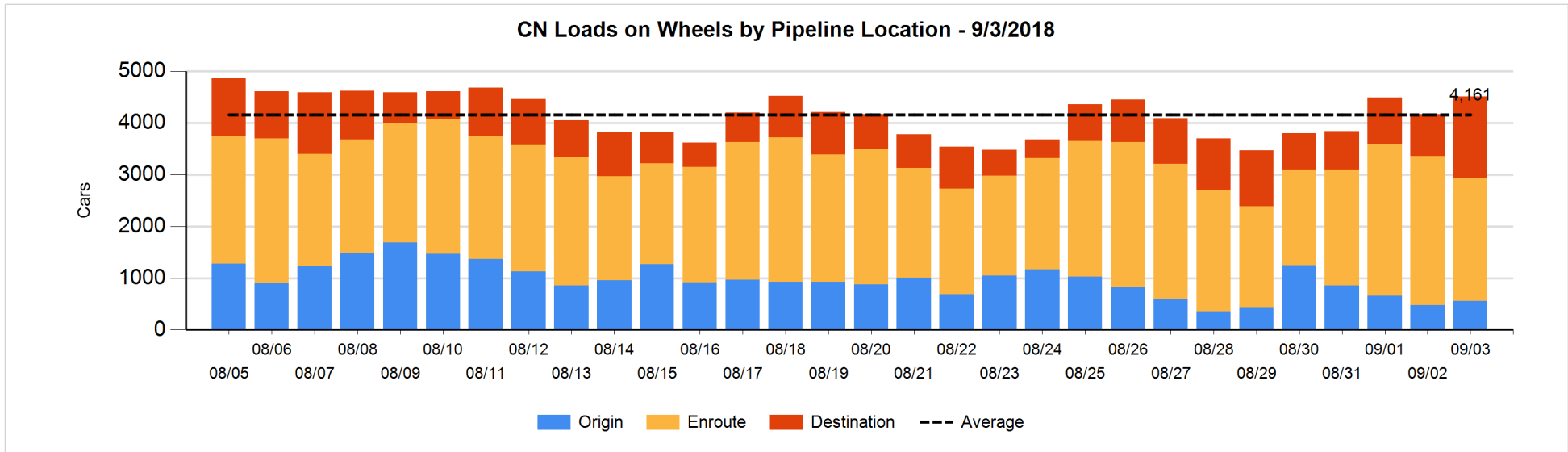


**Daily Loads on Wheels By Pipeline Location - 9/3/2018**

	E Canada	Prince Rupert	Thunder Bay	USA/MEX	Vancouver	Total
CN						
Origin	99	129	116	1	210	555
Enroute	157	800	95	224	1,100	2,376
Destination	72	412	486	30	584	1,584
	328	1,341	697	255	1,894	4,515
CP						
Origin	26		322	47	611	1,006
Enroute	153		349	253	1,299	2,054
Destination			229	7	1,009	1,245
	179		900	307	2,919	4,305
US Rail / Short Line						
Origin						
Enroute	1			148		149
Destination	47			147	12	206
	48			295	12	355

**Change in Daily Loads on Wheels By Pipeline Location - Prior 24 Hours**

	E Canada	Prince Rupert	Thunder Bay	USA/MEX	Vancouver	Total
CN						
Origin	-2	0	9	0	74	81
Enroute	-15	-64	-234	-26	-175	-514
Destination	-6	170	234	20	355	773
	-23	106	9	-6	254	340
CP						
Origin	0		80	-1	-395	-316
Enroute	-52		-6	-59	-87	-204
Destination			-44	6	665	627
	-52		30	-54	183	107
US Rail / Short Line						
Origin						
Enroute	0			51		51
Destination	0			6	-5	1
	0			57	-5	52

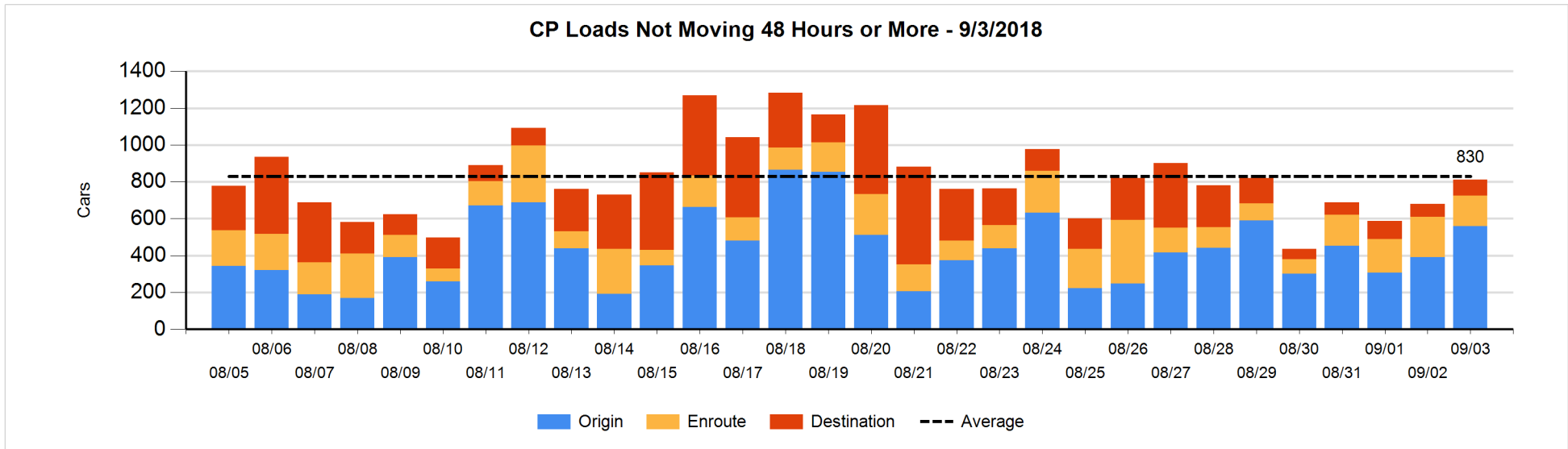
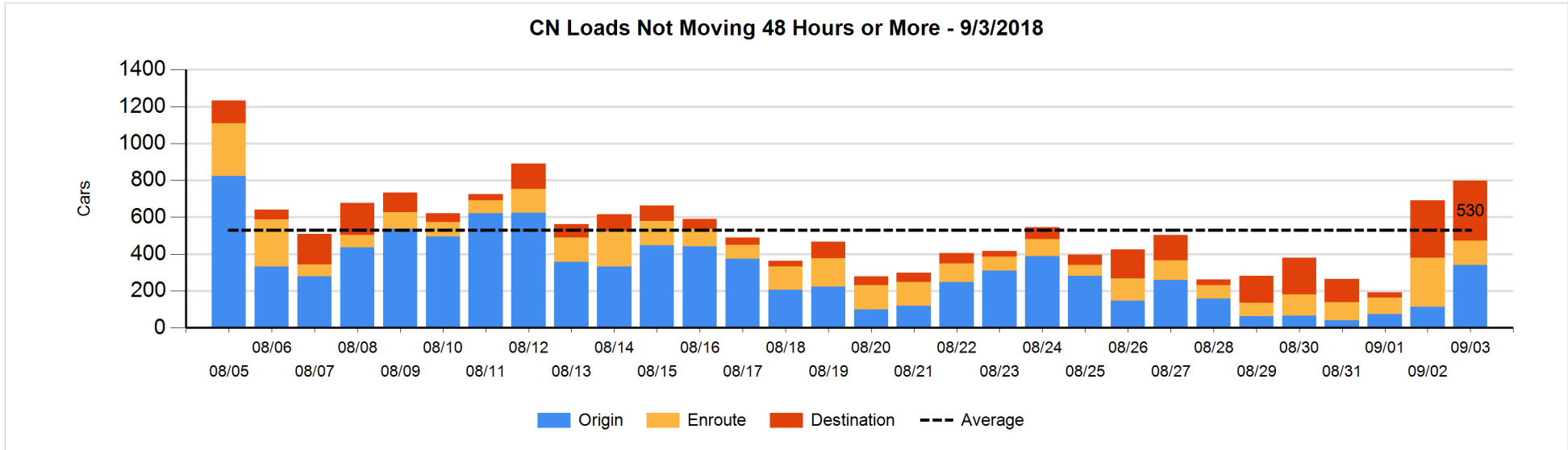


**Loads Not Moving 48 Hours or More - 9/3/2018**

	E Canada	Prince Rupert	Thunder Bay	USA/MEX	Vancouver	Total
CN						
Origin	99	26	107	1	107	340
Enroute	4	5		67	56	132
Destination	40	202	39	5	39	325
	143	233	146	73	202	797
CP						
Origin	26		140	47	346	559
Enroute	74		7	50	34	165
Destination			39		49	88
	100		186	97	429	812
US Rail / Short Line						
Origin						
Enroute				61		61
Destination	26			94	10	130
	26			155	10	191

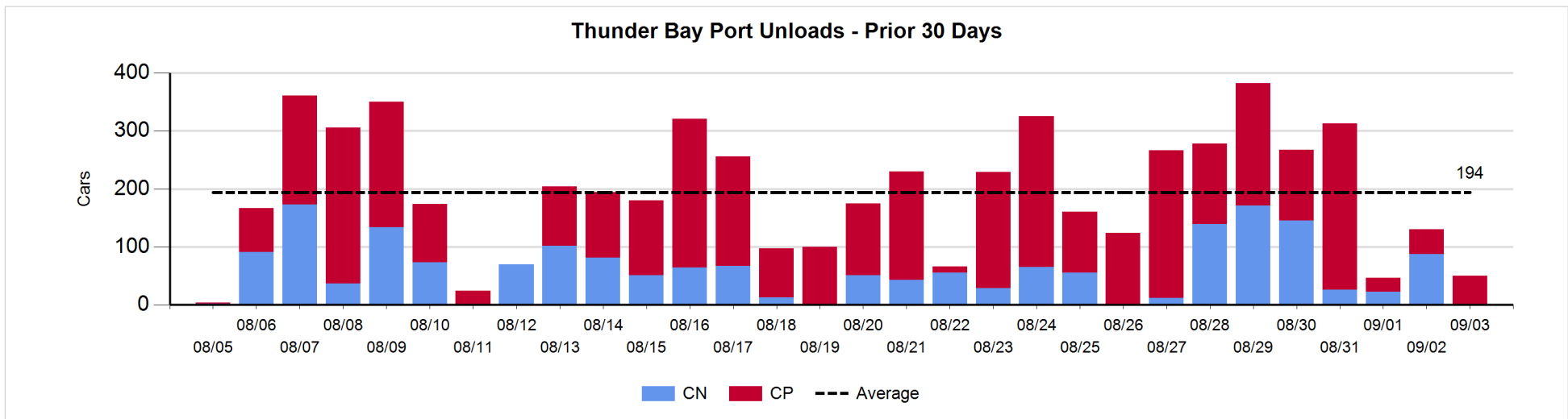
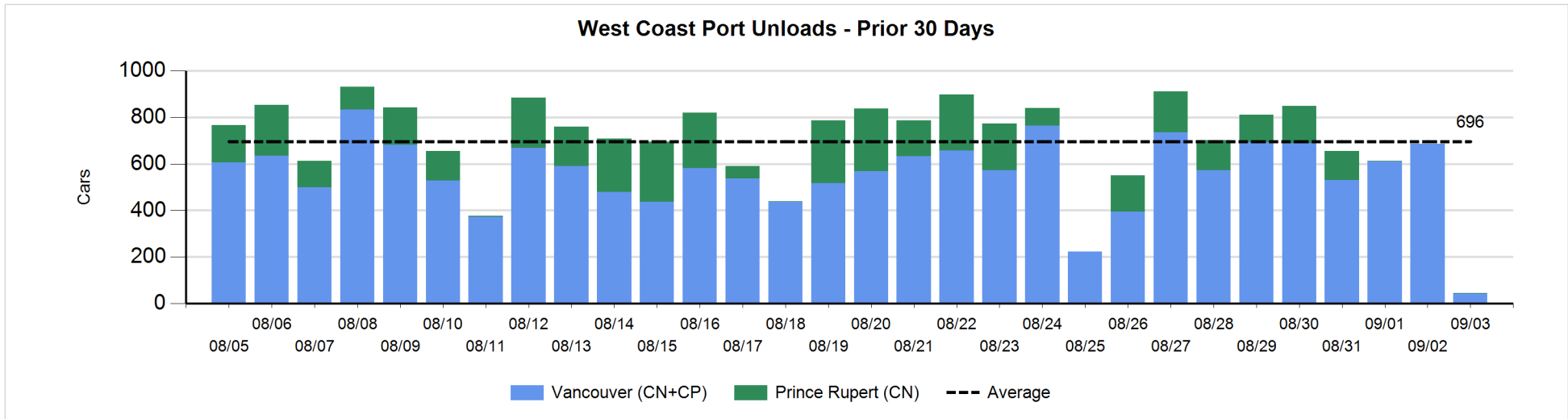
**Change in Loads Not Moving 48 Hours or More - 9/3/2018**

	E Canada	Prince Rupert	Thunder Bay	USA/MEX	Vancouver	Total
CN						
Origin	96	26	107	0	-1	228
Enroute	-47	0		1	-90	-136
Destination	-5	0	12	0	8	15
	44	26	119	1	-83	107
CP						
Origin	0		31	23	114	168
Enroute	-53		-1	-2	1	-55
Destination			5		14	19
	-53		35	21	129	132
US Rail / Short Line						
Origin						
Enroute				-1		-1
Destination	26			-7	1	20
	26			-8	1	19



**Port Unloads - 9/3/2018**

	Prince Rupert	Vancouver	West Coast Total	Thunder Bay	Total
CN	1	16	17		17
CP		27	27	50	77
	1	43	44	50	94





**Port Terminal Status**

**Vancouver**

Daily Activity for 9/3/2018

	Cars Arrived	Cars Received in Interchange	Cars Delivered in Interchange	Cars Placed for Unloading	Loads on Wheels at Destination As of 9/3/2018
CN	181	347	201	232	584
CP	994	201	347	217	1,009
SRY					12

**Port Unloads**

	09/03	09/02	Week To Date	Last Week
CN	16	289	16	2,159
CP	27	397	27	2,355
SRY	7	5	7	37

**Age Profile of Loaded Cars Waiting Placement for Unloading**

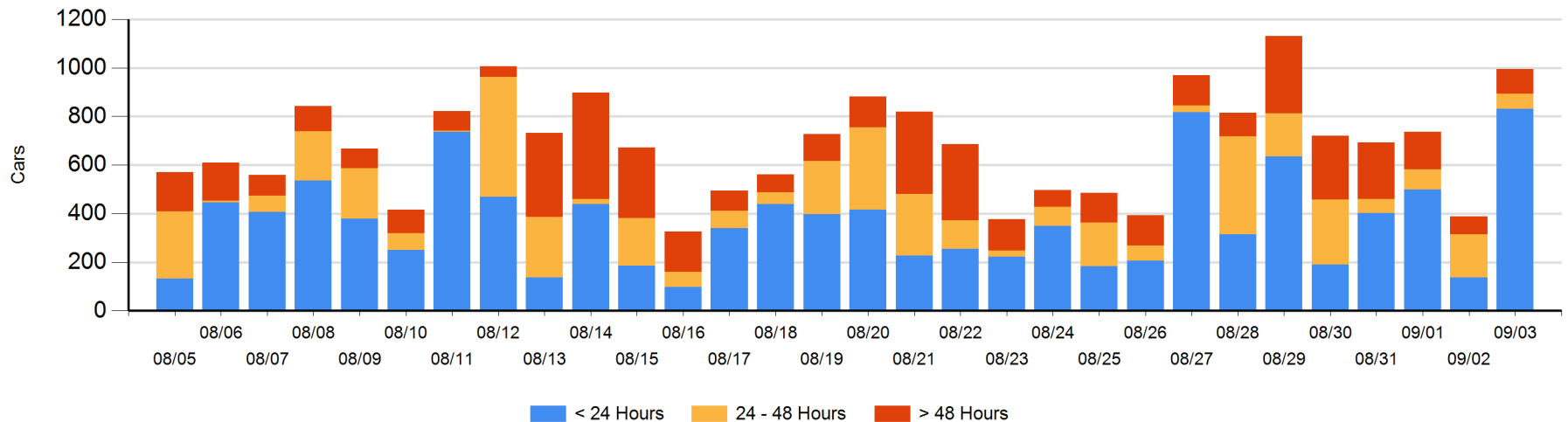
**Today**

	< 24 Hrs	24 - 48 Hrs	> 48-72 Hrs	> 72 Hrs	Total On Hand
CN	181	13	37	23	254
CP	650	50	22	19	741
SRY					0

**Change in Last 24 Hours**

	< 24 Hrs	24-48 Hrs	48 - 72 Hrs	> 72 Hrs
CN	110	-143	5	6
CP	584	28	22	-5
SRY				

**Loaded Cars on Hand Vancouver Waiting for Placement - Last 30 Days All Railways**



**Port Terminal Status**

**Prince Rupert**

Daily Activity for 9/3/2018

	Cars Arrived	Cars Received in Interchange	Cars Delivered in Interchange	Cars Placed for Unloading	Loads on Wheels at Destination As of 9/3/2018
CN	173			173	412

**Port Unloads**

	09/03	09/02	Week To Date	Last Week
CN	1		1	712

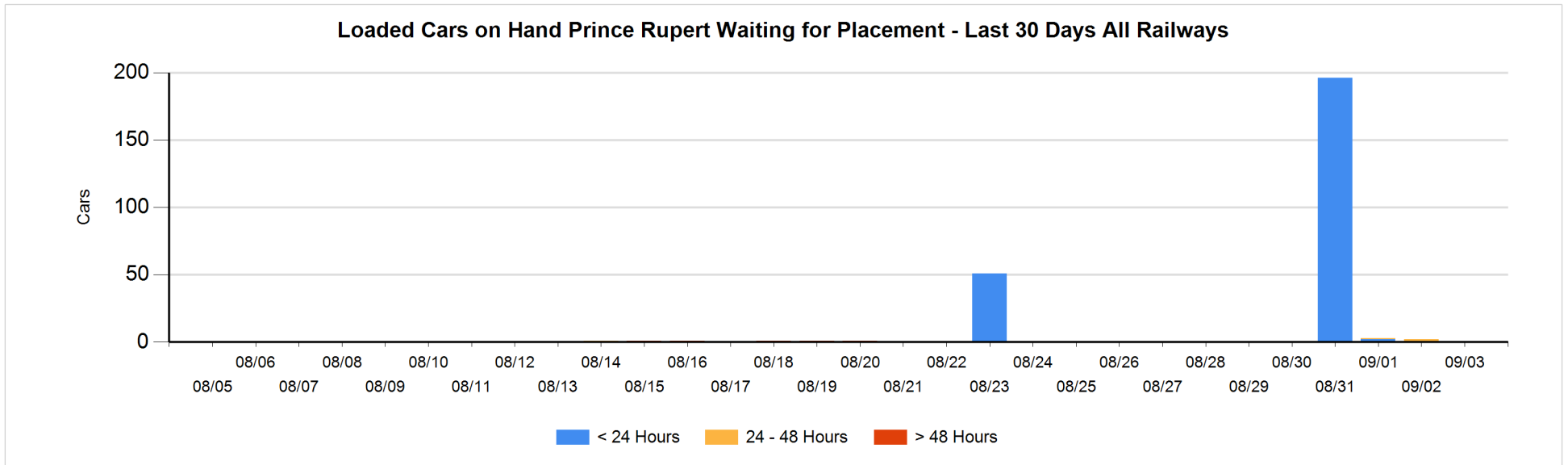
**Age Profile of Loaded Cars Waiting Placement for Unloading**

**Today**

	< 24 Hrs	24 - 48 Hrs	> 48-72 Hrs	> 72 Hrs	Total On Hand
CN					0

**Change in Last 24 Hours**

	< 24 Hrs	24-48 Hrs	48 - 72 Hrs	> 72 Hrs
CN		-2		



**Port Terminal Status**

**Thunder Bay**

Daily Activity for 9/3/2018

	Cars Arrived	Cars Received in Interchange	Cars Delivered in Interchange	Cars Placed for Unloading	Loads on Wheels at Destination As of 9/3/2018
CN	234			203	486
CP	6			120	229

**Port Unloads**

	09/03	09/02	Week To Date	Last Week
CN		87		602
CP	50	43	50	1,080

**Age Profile of Loaded Cars Waiting Placement for Unloading**

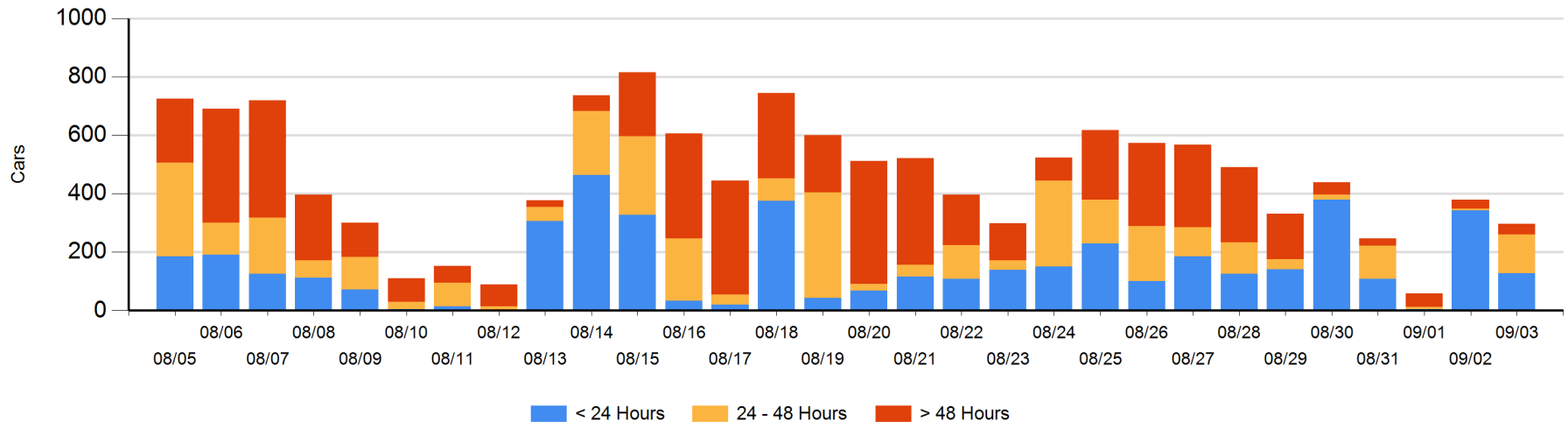
**Today**

	< 24 Hrs	24 - 48 Hrs	> 48-72 Hrs	> 72 Hrs	Total On Hand
CN	121	19			140
CP	6	114	5	32	157

**Change in Last 24 Hours**

	< 24 Hrs	24-48 Hrs	48 - 72 Hrs	> 72 Hrs
CN	12	19		
CP	-228	109	5	0

**Loaded Cars on Hand Thunder Bay Waiting for Placement - Last 30 Days All Railways**



## Measurement Definitions

Loads on Wheels	<p>Count of loaded rail cars including all rail cars that have been released loaded at origin and have not been reported by the railway as unloaded at destination.</p> <p>Counts include all rail cars (hopper cars and boxcars) moving within a pipeline.</p>
Loads Not Moving	<p>Loaded rail cars for which the railways have not reported a movement event for 48 hours or more whether the rail car is at origin, enroute or at destination.</p>
Port Unloads	<p>Count of rail cars reported by railways as unloaded at the western port destinations of Vancouver, Prince Rupert and Thunder Bay.</p> <p>Unload counts include all rail cars (hopper cars and boxcars) unloaded by all receivers including major port terminals, transloaders and other receivers.</p>
Cars Arrived	<p>Count of rail cars reported as arrived at the destination railway terminal.</p>
Cars Received in Interchange	<p>Count of rail cars received in interchange by each railway within a destination railway terminal. Interchange activity is tracked for the Vancouver and Thunder Bay pipelines as applicable.</p>
Cars Delivered in Interchange	<p>Count of rail cars delivered in interchange by each railway within a destination railway terminal. Interchange activity is tracked for the Vancouver and Thunder Bay pipelines as applicable.</p>
Cars Placed for Unloading	<p>Count of rail cars reported by the railways as placed loaded at the receiver's facility for unloading.</p>
Loads on Wheels at Destination	<p>Count of rail cars that remain under load within the destination railway terminal including rail cars that have been reported as placed for unloading but not yet reported as unloaded.</p>
Waiting Placement for Unloading	<p>Count of rail cars that have been reported as arrived at the destination railway terminal but not reported as placed for unloading by the railway.</p> <p>For the Ports of Vancouver, Prince Rupert and Thunder Bay the count of rail cars waiting placement for unloading is categorized by age – i.e. the elapsed time from arrival at destination to the current report date.</p>