

SPEED READ

- Loads on wheels decreased overnight, marking a decline in CN volumes offset by higher CP volumes. On a net basis, volumes decreased due to lower traffic levels across all corridors other than Thunder Bay.
- Network fluidity improved overnight, led by a decline in idle car counts on both CN and CP by 34% and 35%, respectively. The total count of cars for 4+ days on both railways increased 33% overnight - now at 483 cars.
- Two days in Week 6 unloads now behind prior week's performance by more than 600 unloads, reflecting reduced unloads across all three major ports.

Loads on Wheels

- Loads on wheels decreased 2% (-191) overnight, due to lower volumes on CN offset by higher traffic on CP - combined total at 9,011 and 9% above the trailing 30-day average.
- On a net basis, the decline in loads on wheels reflects reduced traffic across all corridors other than Thunder Bay.
- CN volumes decreased significantly by 12% (-520) overnight, with lower traffic levels across all corridors. System wide CN loads on wheels now at 3,996 and 3% below the trailing 30-day average.
- CP volumes increased 8% (+351) overnight and have now increased for the fourth consecutive day, driven by a rise in volumes across all corridors other than E. Canada. CP system wide loads on wheels now at 4,688, the highest seen in the last 30 days, and 22% above the trailing 30-day average.
- Vancouver presently at 4,711, fell 2% (-116) overnight and 8% above the trailing 30-day average.
- The Prince Rupert pipeline presently at 1,290, decreased 4% (-51) overnight and 12% above the trailing 30-day average.
- Thunder Bay volumes rose 4% (+65) overnight and have now increased for four consecutive days, - presently at 1,662 and 21% above the trailing 30-day average with 66% of traffic moving on CP.

Hopper Car Rationing

- No hopper car rationing was reported for either CN or CP in week 5 and none expected in week 6.

Loads Not Moving

- **The count of cars not moving for 48+ hours decreased 34% (-563) overnight, reflecting lower counts on both CN and CP. Idle car counts now at 1,078 and 20% below the trailing 30 day-average.**
- CN
 - **The count of idle cars for 48+ hours fell 34% (-268) overnight - presently at 530 cars.**
 - The number of cars idle for 4+ days surged by 195% (+191) overnight - presently at 289 cars.
 - The count of cars not moving for 7+ days increased significantly by 138% (+44) overnight - now at 76 cars.
 - Vancouver represents 25% of all idle cars.
 - In total 46% of all idle cars are dwelling at origin locations.
- CP
 - **CP idle car counts for 48+ hours declined 35% (-295) overnight - now at 548 cars.**
 - The number of cars idle for 4+ days decreased 27% (-70) overnight - presently at 194 cars.
 - The number of cars idle for 7+ days fell 3% (-2) overnight - presently at 65 cars.
 - Vancouver accounts for 40% of all idle cars.

- In total 38% of all idle cars are dwelling at origin locations.

Port Performance

- CN and CP reported a total of 1,450 cars unloaded at the three major ports, the highest seen in the last 30 days, now 62% above the trailing 30-day average. Two days in Week 6 unloads are tracking behind last week's pace by more than 600 unloads, marking lower unloads across all three ports.
- Vancouver
 - 876 unloads, the highest seen in the last 30 days, was reported by CN and CP at the Port of Vancouver; CN - 408 and CP - 468. Two days in Week 6 unloads are tracking behind last week's performance by less than 400 unloads.
 - There are 1,500 cars on site at Vancouver with more than 750 cars arriving at the port in the last 24 hours.
 - CN and CP have more than 700 cars in British Columbia en route to Vancouver, with more than 350 Kamloops and west and 82% of traffic currently moving on CP.
- Prince Rupert
 - Prince Rupert reported 251 unloads, now behind last week's unloads after two days by 50 unloads.
 - Loads on wheels now above 1,000 cars.
 - There are more than 550 cars west of Jasper en route to Prince Rupert - predominantly Prince George and west.
 - There are more than 150 cars on site at Prince Rupert with zero cars arriving at the port in the last 24 hours. Given the structure of the pipeline, there appears to be sufficient cars available to support unloads in the next few days.
- Thunder Bay
 - 323 unloads reported at Thunder Bay yesterday. Two days in Week 6 unloads are tracking behind last week's pace by more than 150 unloads.
 - There are less than 450 cars on site at Thunder Bay with nearly 50 cars arriving at the port in the prior 24 hours.
 - There are about 500 cars en route to Thunder Bay from Winnipeg and east. Cars on hand and those en route should support unloads in the next few days.

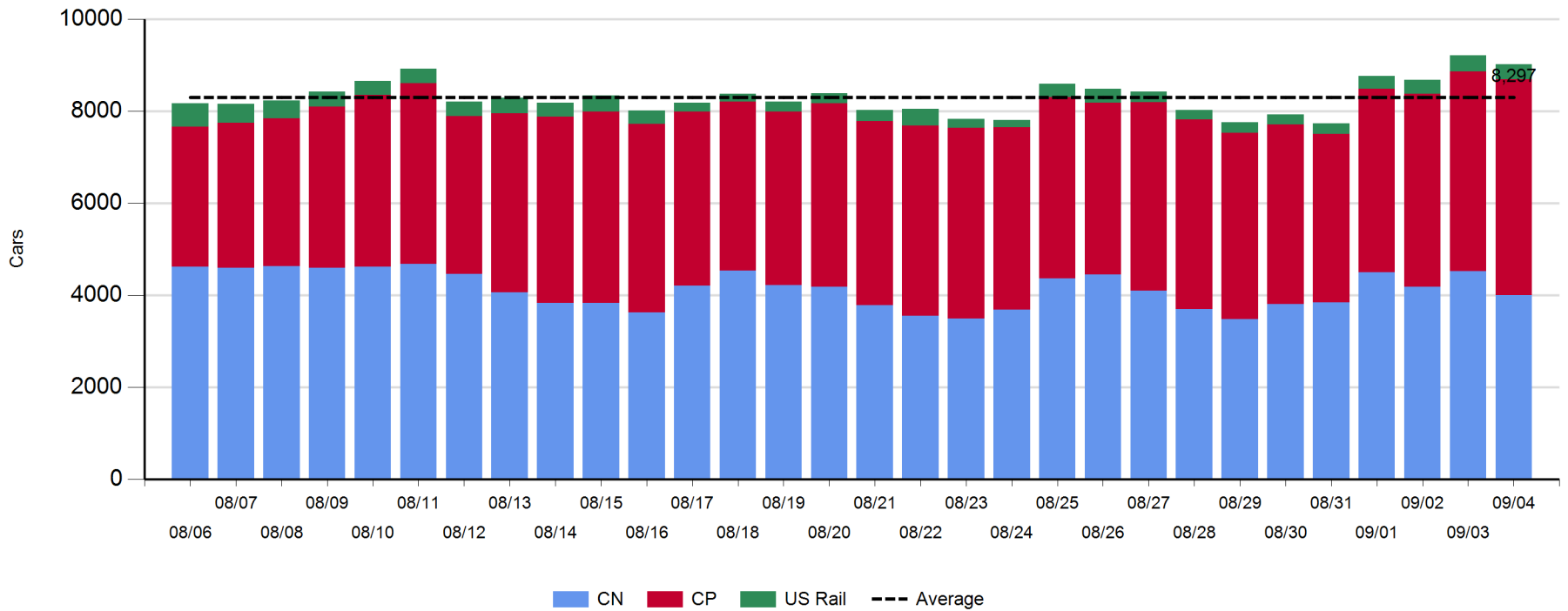
Daily Loads on Wheels - 9/4/2018

	E Canada	Prince Rupert	Thunder Bay	USA/MEX	Vancouver	Total
CN	298	1,290	565	237	1,606	3,996
CP	147		1,097	355	3,089	4,688
Short Line	22				16	38
US Rail				289		289
	467	1,290	1,662	881	4,711	9,011

Change in Loads on Wheels - Prior 24 Hours

	E Canada	Prince Rupert	Thunder Bay	USA/MEX	Vancouver	Total
CN	-30	-51	-132	-18	-289	-520
CP	-32		197	17	169	351
Short Line	-26				4	-22
US Rail				0		0
	-88	-51	65	-1	-116	-191

Loads on Wheels - Prior 30 Days

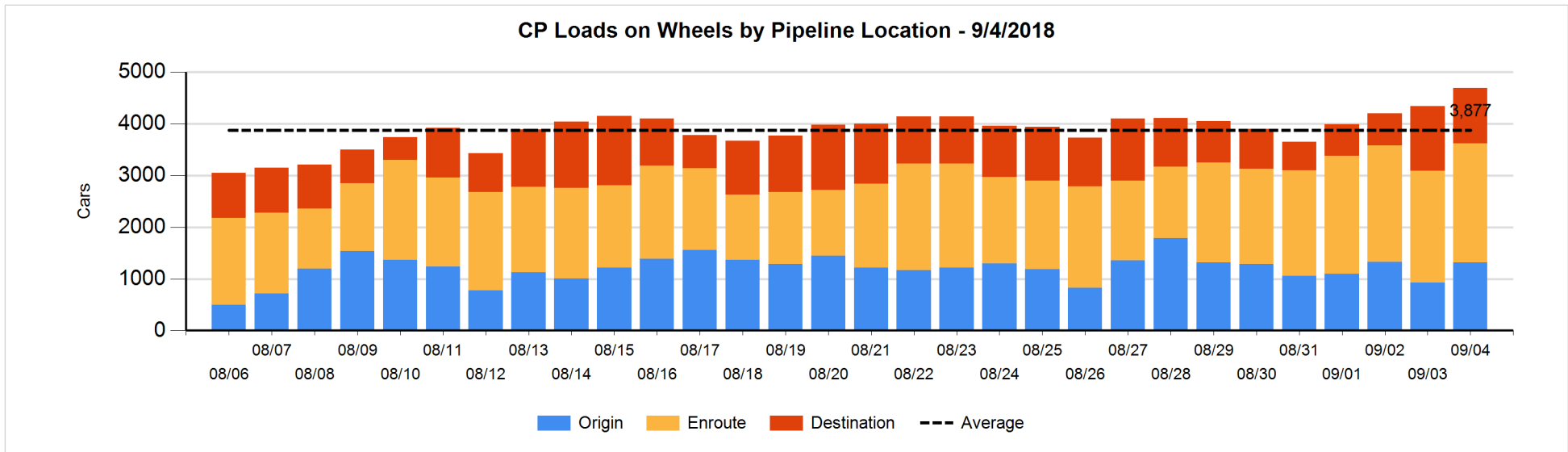
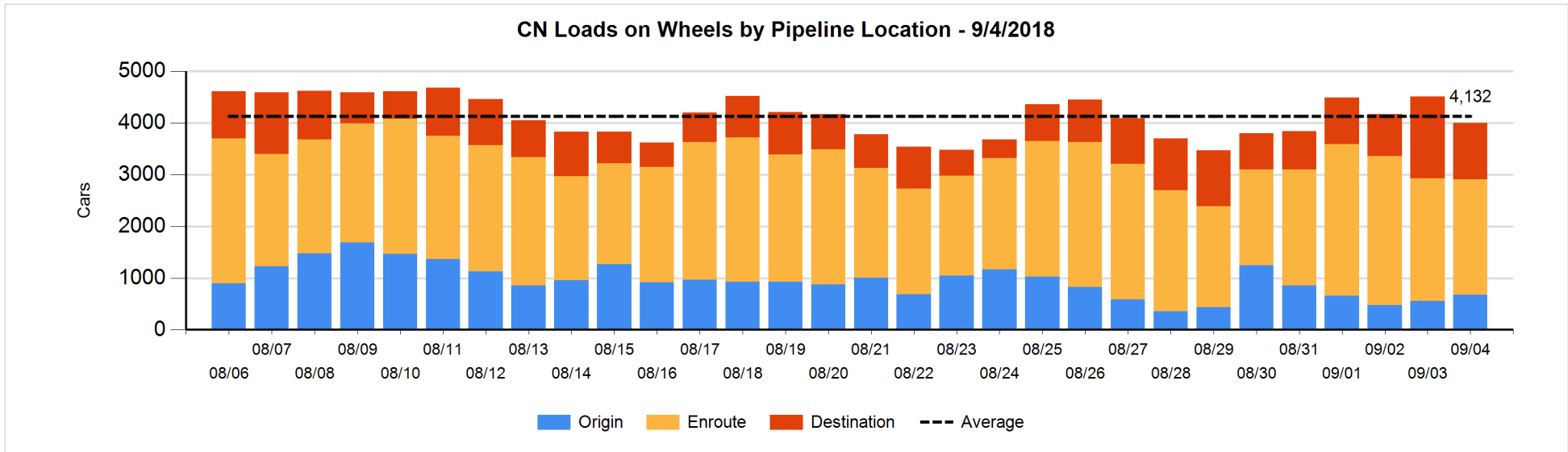


Daily Loads on Wheels By Pipeline Location - 9/4/2018

	E Canada	Prince Rupert	Thunder Bay	USA/MEX	Vancouver	Total
CN						
Origin	6	226	116	19	310	677
Enroute	218	903	229	207	676	2,233
Destination	74	161	220	11	620	1,086
	298	1,290	565	237	1,606	3,996
CP						
Origin	2		386	139	794	1,321
Enroute	145		502	216	1,434	2,297
Destination			209		861	1,070
	147		1,097	355	3,089	4,688
US Rail / Short Line						
Origin						
Enroute	1			132		133
Destination	21			157	16	194
	22			289	16	327

Change in Daily Loads on Wheels By Pipeline Location - Prior 24 Hours

	E Canada	Prince Rupert	Thunder Bay	USA/MEX	Vancouver	Total
CN						
Origin	-93	97	0	18	100	122
Enroute	61	103	134	-17	-425	-144
Destination	2	-251	-266	-19	36	-498
	-30	-51	-132	-18	-289	-520
CP						
Origin	-24		166	67	182	391
Enroute	-8		51	-43	135	135
Destination			-20	-7	-148	-175
	-32		197	17	169	351
US Rail / Short Line						
Origin						
Enroute	0			-10		-10
Destination	-26			10	4	-12
	-26			0	4	-22

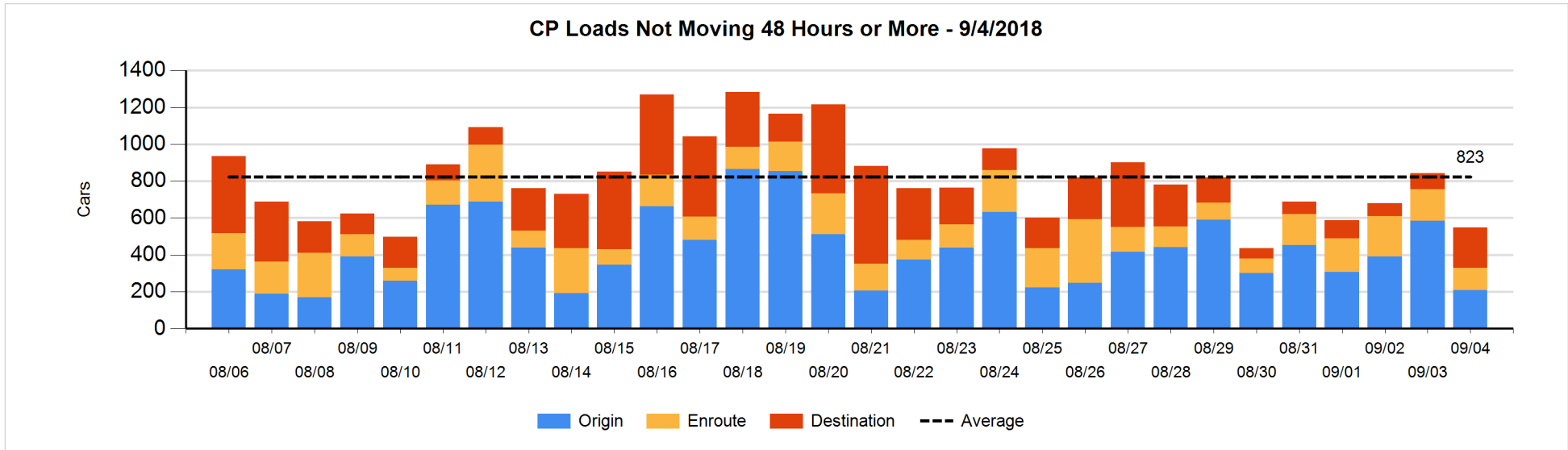
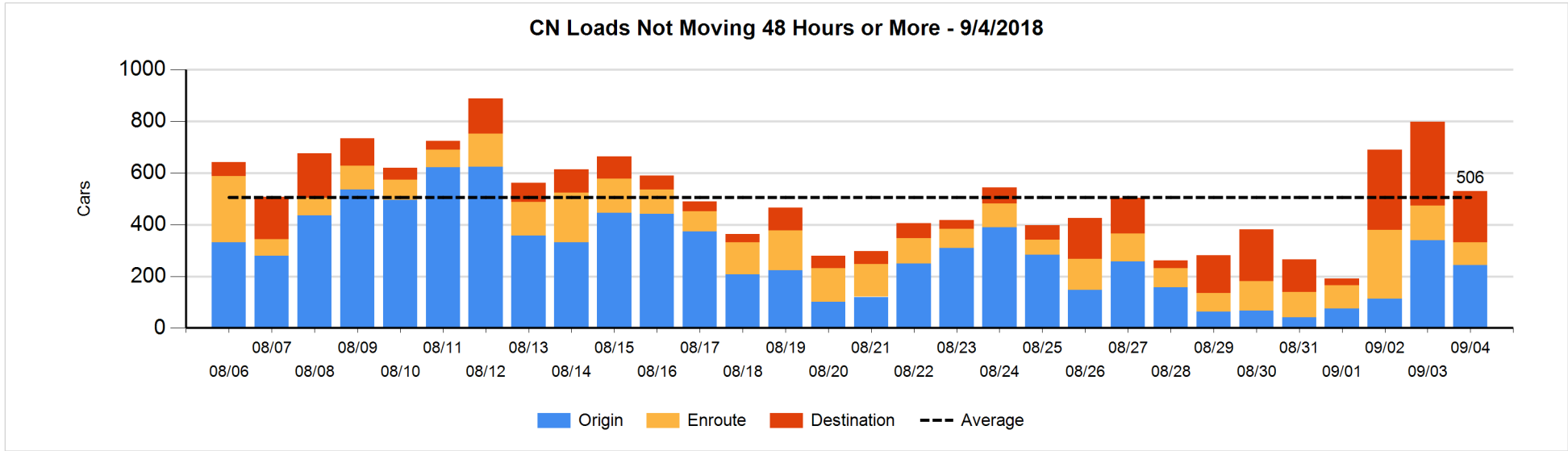


Loads Not Moving 48 Hours or More - 9/4/2018

	E Canada	Prince Rupert	Thunder Bay	USA/MEX	Vancouver	Total
CN						
Origin	1	26	107	1	109	244
Enroute	2	16		58	11	87
Destination	41	66	74	3	15	199
	44	108	181	62	135	530
CP						
Origin			52	48	108	208
Enroute	57		19	12	34	122
Destination			140		78	218
	57		211	60	220	548
US Rail / Short Line						
Origin						
Enroute	1			27		28
Destination	21			75	5	101
	22			102	5	129

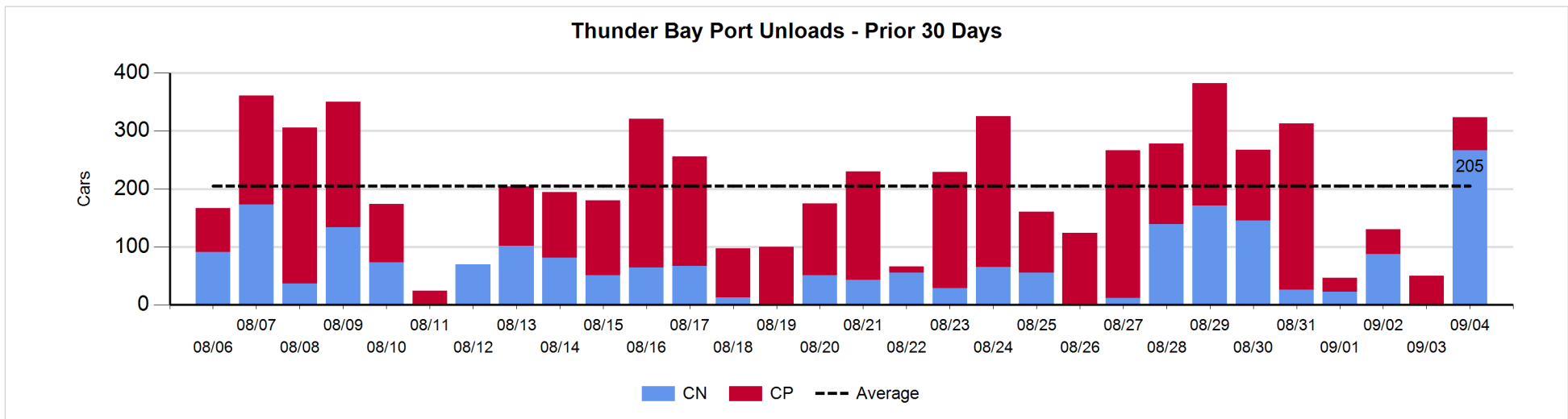
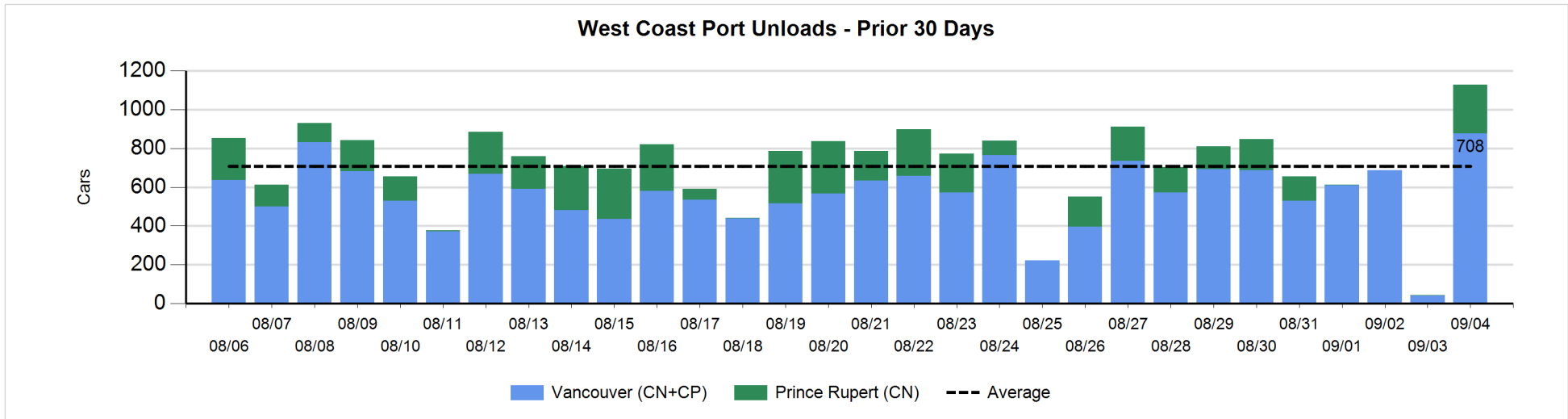
Change in Loads Not Moving 48 Hours or More - 9/4/2018

	E Canada	Prince Rupert	Thunder Bay	USA/MEX	Vancouver	Total
CN						
Origin	-98	0	0	0	2	-96
Enroute	-2	11		-9	-46	-46
Destination	1	-136	35	-2	-24	-126
	-99	-125	35	-11	-68	-268
CP						
Origin	-26		-88	-24	-238	-376
Enroute	-17		12	-44	0	-49
Destination			101		29	130
	-43		25	-68	-209	-295
US Rail / Short Line						
Origin						
Enroute	1			-28		-27
Destination	-5			-19	-5	-29
	-4			-47	-5	-56



Port Unloads - 9/4/2018

	Prince Rupert	Vancouver	West Coast Total	Thunder Bay	Total
CN	251	408	659	266	925
CP		468	468	57	525
	251	876	1,127	323	1,450



Port Terminal Status

Vancouver

Daily Activity for 9/4/2018

	Cars Arrived	Cars Received in Interchange	Cars Delivered in Interchange	Cars Placed for Unloading	Loads on Wheels at Destination As of 9/4/2018
CN	524	4	198	230	620
CP	249	191	5	267	861
SRY		8		6	16

Port Unloads

	09/04	09/03	Week To Date	Last Week
CN	408	16	424	2,159
CP	468	27	495	2,355
SRY	4	7	11	37

Age Profile of Loaded Cars Waiting Placement for Unloading

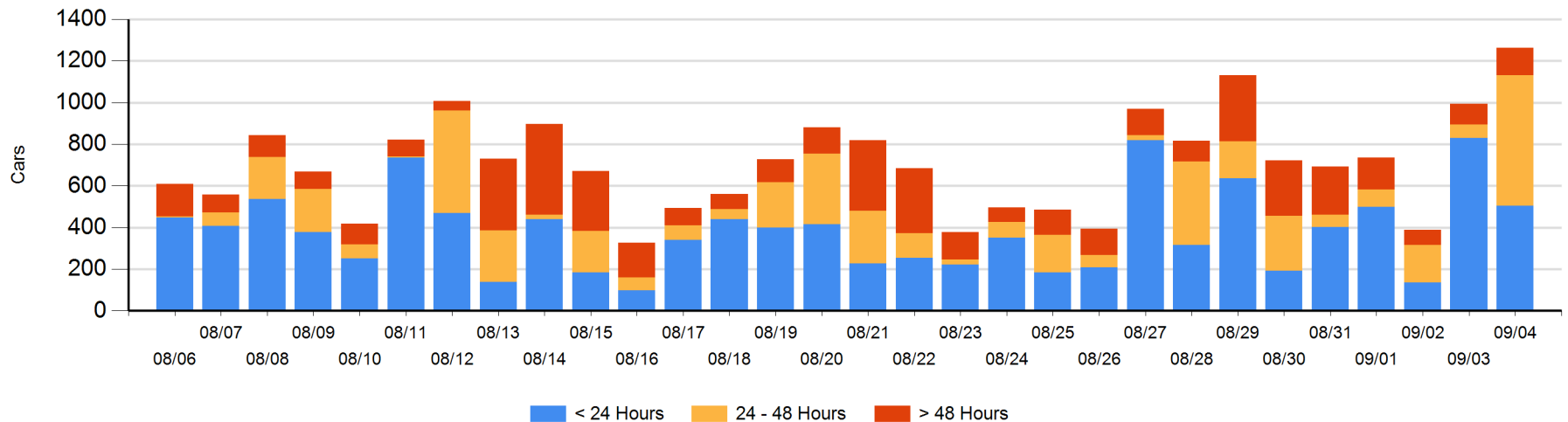
Today

	< 24 Hrs	24 - 48 Hrs	> 48-72 Hrs	> 72 Hrs	Total On Hand
CN	448	184	13	54	699
CP	57	442	42	24	565
SRY					0

Change in Last 24 Hours

	< 24 Hrs	24-48 Hrs	48 - 72 Hrs	> 72 Hrs
CN	264	171	-24	31
CP	-590	392	20	5
SRY				

Loaded Cars on Hand Vancouver Waiting for Placement - Last 30 Days All Railways



Port Terminal Status

Prince Rupert

Daily Activity for 9/4/2018

	Cars Arrived	Cars Received in Interchange	Cars Delivered in Interchange	Cars Placed for Unloading	Loads on Wheels at Destination As of 9/4/2018
CN					161

Port Unloads

	09/04	09/03	Week To Date	Last Week
CN	251	1	252	712

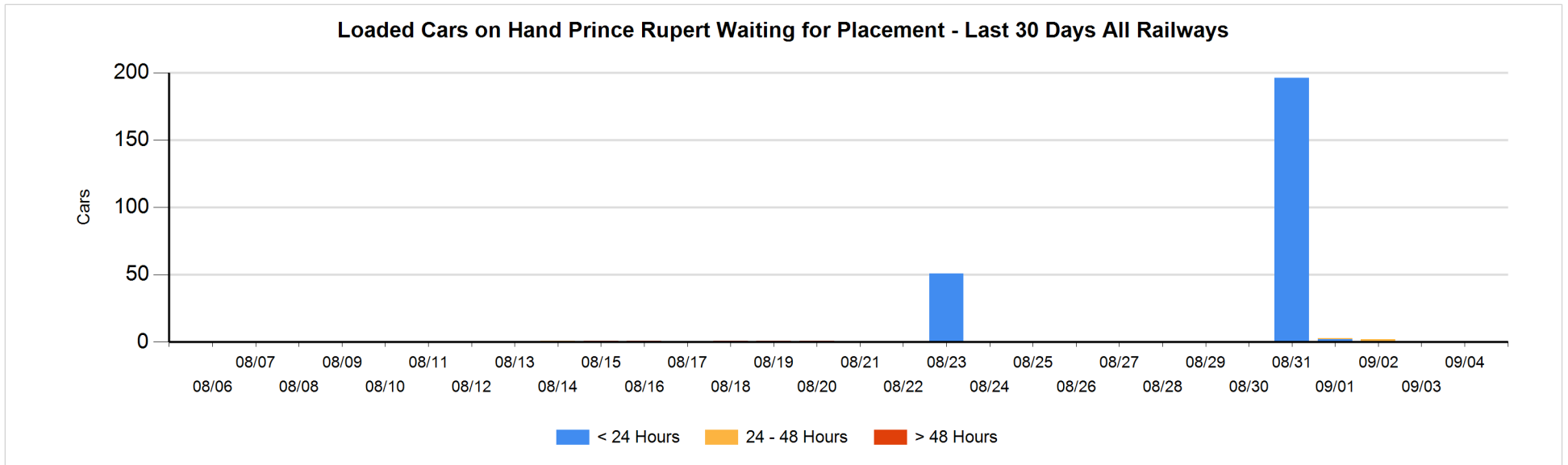
Age Profile of Loaded Cars Waiting Placement for Unloading

Today

	< 24 Hrs	24 - 48 Hrs	> 48-72 Hrs	> 72 Hrs	Total On Hand
CN					0

Change in Last 24 Hours

	< 24 Hrs	24-48 Hrs	48 - 72 Hrs	> 72 Hrs
CN				



Port Terminal Status

Thunder Bay

Daily Activity for 9/4/2018

	Cars Arrived	Cars Received in Interchange	Cars Delivered in Interchange	Cars Placed for Unloading	Loads on Wheels at Destination As of 9/4/2018
CN				19	220
CP	37			12	209

Port Unloads

	09/04	09/03	Week To Date	Last Week
CN	266		266	602
CP	57	50	107	1,080

Age Profile of Loaded Cars Waiting Placement for Unloading

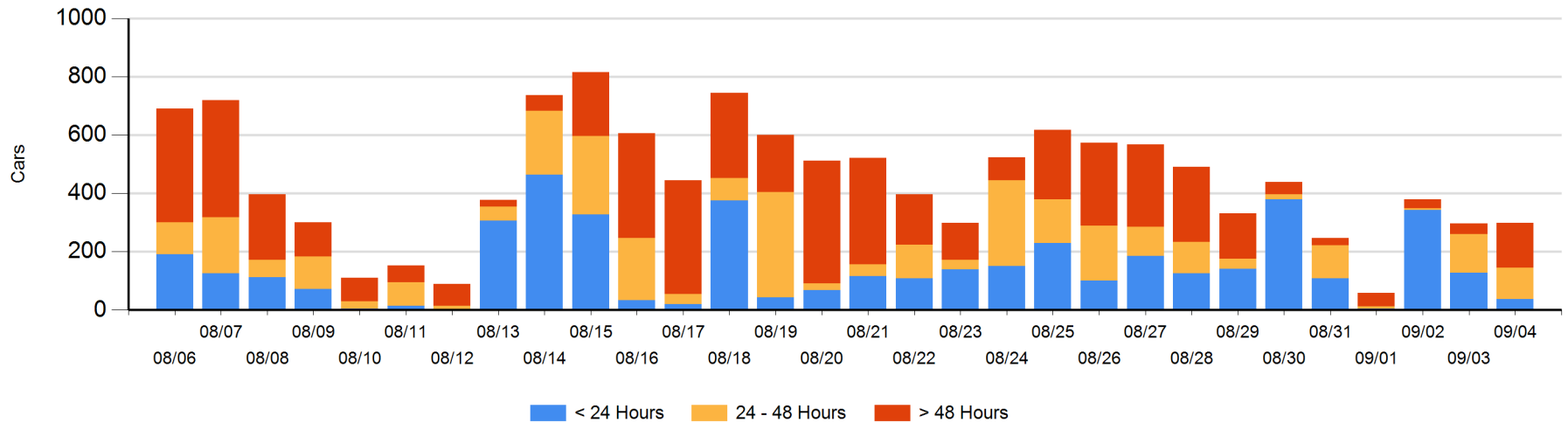
Today

	< 24 Hrs	24 - 48 Hrs	> 48-72 Hrs	> 72 Hrs	Total On Hand
CN		102	19		121
CP	37	6	114	20	177

Change in Last 24 Hours

	< 24 Hrs	24-48 Hrs	48 - 72 Hrs	> 72 Hrs
CN	-121	83	19	
CP	31	-108	109	-12

Loaded Cars on Hand Thunder Bay Waiting for Placement - Last 30 Days All Railways



Measurement Definitions

Loads on Wheels	<p>Count of loaded rail cars including all rail cars that have been released loaded at origin and have not been reported by the railway as unloaded at destination.</p> <p>Counts include all rail cars (hopper cars and boxcars) moving within a pipeline.</p>
Loads Not Moving	<p>Loaded rail cars for which the railways have not reported a movement event for 48 hours or more whether the rail car is at origin, enroute or at destination.</p>
Port Unloads	<p>Count of rail cars reported by railways as unloaded at the western port destinations of Vancouver, Prince Rupert and Thunder Bay.</p> <p>Unload counts include all rail cars (hopper cars and boxcars) unloaded by all receivers including major port terminals, transloaders and other receivers.</p>
Cars Arrived	<p>Count of rail cars reported as arrived at the destination railway terminal.</p>
Cars Received in Interchange	<p>Count of rail cars received in interchange by each railway within a destination railway terminal. Interchange activity is tracked for the Vancouver and Thunder Bay pipelines as applicable.</p>
Cars Delivered in Interchange	<p>Count of rail cars delivered in interchange by each railway within a destination railway terminal. Interchange activity is tracked for the Vancouver and Thunder Bay pipelines as applicable.</p>
Cars Placed for Unloading	<p>Count of rail cars reported by the railways as placed loaded at the receiver's facility for unloading.</p>
Loads on Wheels at Destination	<p>Count of rail cars that remain under load within the destination railway terminal including rail cars that have been reported as placed for unloading but not yet reported as unloaded.</p>
Waiting Placement for Unloading	<p>Count of rail cars that have been reported as arrived at the destination railway terminal but not reported as placed for unloading by the railway.</p> <p>For the Ports of Vancouver, Prince Rupert and Thunder Bay the count of rail cars waiting placement for unloading is categorized by age – i.e. the elapsed time from arrival at destination to the current report date.</p>