

## SPEED READ

- Loads on wheels decreased overnight, reflecting a decline in both CN and CP volumes. On a net basis, volumes fell due to lower volumes across all corridors - Vancouver, Thunder Bay, Prince Rupert, USA/MEX and E. Canada.
- Network fluidity was unchanged overnight, led by a decline in idle car counts on CN by 19% (-105) cancelled out by an increase in idle car counts on CP by 10% (+100). The total count of cars for 4+ days on both railways increased for the third consecutive day, up 12% overnight - presently at 731 cars, the highest seen in the last 30 days.
- One day in Week 7 unloads now ahead of prior week's performance by 1,400 unloads, marking improved week over week performance across all three major ports - Vancouver, Thunder Bay and Prince Rupert.

---

## Loads on Wheels

- Loads on wheels declined 9% (-920) overnight, due to lower traffic levels on both CN and CP - combined total at 9,244 and 9% above the trailing 30-day average.
- On a net basis, the decline in loads on wheels reflects lower volumes across all corridors - Vancouver, Thunder Bay, Prince Rupert, USA/MEX and E. Canada.
- CN volumes decreased significantly by 12% (-586) overnight, with reduced traffic across all corridors - Vancouver, Thunder Bay, Prince Rupert, USA/MEX and E. Canada. System wide CN loads on wheels presently at 4,491 and 10% above the trailing 30-day average.
- CP volumes fell 7% (-310) overnight, driven by a decline in traffic levels across all corridors other than USA/MEX. CP system wide loads on wheels currently at 4,424 and 8% above the trailing 30-day average.
- Vancouver currently at 4,754, fell 8% (-429) overnight and have now decreased for the third consecutive day, now 7% above the trailing 30-day average.
- The Prince Rupert pipeline currently at 1,099, declined significantly by 15% (-200) overnight and 1% above the trailing 30-day average.
- Thunder Bay volumes decreased significantly by 13% (-274) overnight - currently at 1,779 and 19% above the trailing 30-day average with 62% of traffic moving on CP.

## Hopper Car Rationing

- No hopper car rationing was reported for either CN or CP in week 6. For the current grain week (7), CN has rationed 100 hopper car orders.

## Loads Not Moving

- **The count of cars not moving for 48+ hours remained unchanged (-5) overnight, marking lower counts on CN offset by higher counts on CP. Idle car counts currently at 1,608 and 21% above the trailing 30-day average.**
- CN
  - **The count of idle cars for 48+ hours fell 19% (-105) overnight - currently at 458 cars.**
  - The number of cars idle for 4+ days declined 33% (-75) overnight - currently at 151 cars.
  - The count of cars not moving for 7+ days declined 3% (-3) overnight - presently at 83 cars.
  - Vancouver represents 46% of all idle cars.
  - In total 28% of all idle cars are dwelling at origin locations.
- CP
  - **CP idle car counts for 48+ hours gained 10% (+100) overnight - currently at 1,150 cars.**
  - The number of cars idle for 4+ days rose 37% (+156) overnight - currently at 580 cars, the highest seen in the last 30 days.

- The number of cars idle for 7+ days fell 16% (-6) overnight and have now decreased for four consecutive days - currently at 32 cars.
- Vancouver accounts for 59% of all idle cars.
- In total 45% of all idle cars are dwelling at origin locations.

### **Port Performance**

- CN and CP reported a total of 1,490 cars unloaded at the three major ports, the highest seen in the last 30 days, now 59% above the trailing 30-day average. One day in Week 7 unloads are tracking ahead of last week's pace by 1,400 unloads, reflecting higher unloads across all three major ports - Vancouver, Thunder Bay and Prince Rupert.
- Vancouver
  - 900 unloads, the highest seen in the last 30 days, was reported by CN and CP at the Port of Vancouver; CN - 506 and CP - 394. One day in Week 7 unloads are tracking ahead of last week's performance by more than 850 unloads.
  - There are 1,100 cars on site at Vancouver with less than 750 cars arriving at the port in the last 24 hours.
  - CN and CP have more than 1,000 cars in British Columbia en route to Vancouver, with 700 Kamloops and west and 60% of traffic currently moving on CN.
- Prince Rupert
  - Prince Rupert reported 205 unloads, now ahead of last week's unloads after one day by 200 unloads.
  - Loads on wheels now above 1,000 cars - presently at 1,099 cars.
  - There are fewer than 300 cars west of Jasper en route to Prince Rupert.
  - There are more than 250 cars on site at Prince Rupert with 100 cars arriving at the port in the last 24 hours. Given the structure of the pipeline, there appears to be sufficient cars available to support unloads in the next few days.
- Thunder Bay
  - 385 unloads, the highest seen in the last 30 days, were reported at Thunder Bay yesterday. One day in Week 7 unloads are tracking ahead of last week's pace by nearly 350 unloads.
  - There are 1,050 cars on site at Thunder Bay with more than 500 cars arriving at the port in the prior 24 hours.
  - There are 500 cars en route to Thunder Bay from Winnipeg and east. Cars on hand and those en route should support unloads for the balance of the week.

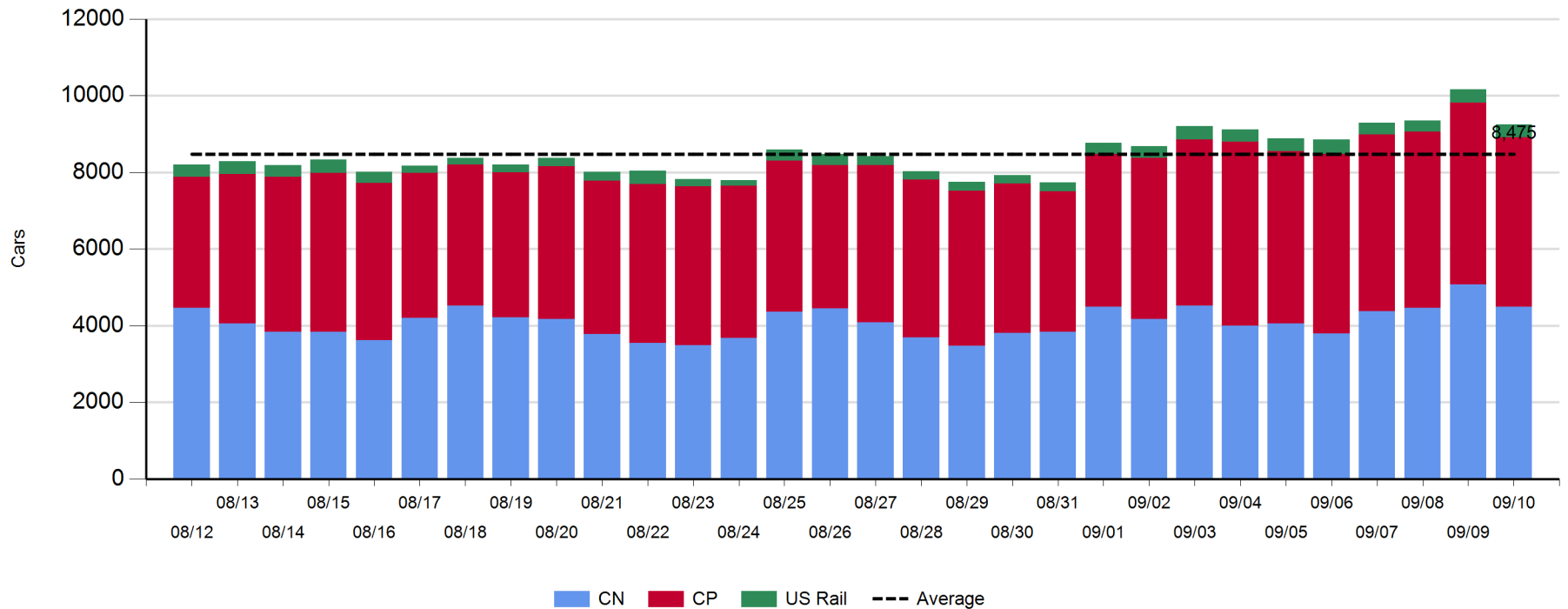
**Daily Loads on Wheels - 9/10/2018**

	E Canada	Prince Rupert	Thunder Bay	USA/MEX	Vancouver	Total
CN	407	1,099	676	219	2,090	4,491
CP	177		1,103	506	2,638	4,424
Short Line	18				26	44
US Rail				285		285
	602	1,099	1,779	1,010	4,754	9,244

**Change in Loads on Wheels - Prior 24 Hours**

	E Canada	Prince Rupert	Thunder Bay	USA/MEX	Vancouver	Total
CN	-7	-200	-132	-6	-241	-586
CP	-10		-142	23	-181	-310
Short Line	6				-7	-1
US Rail				-23		-23
	-11	-200	-274	-6	-429	-920

**Loads on Wheels - Prior 30 Days**

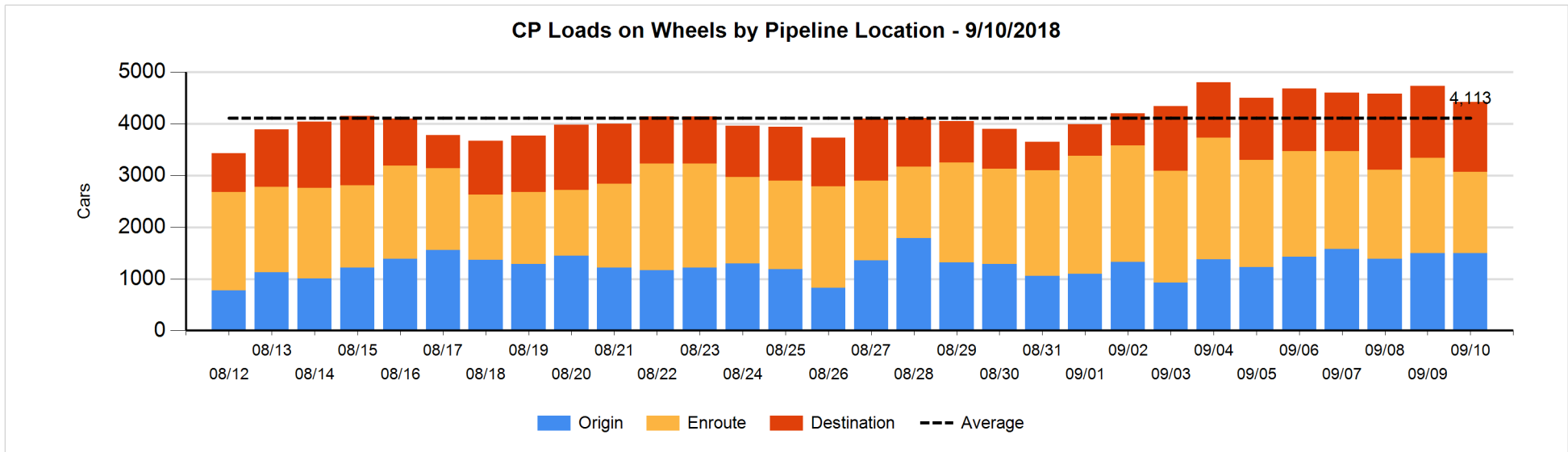
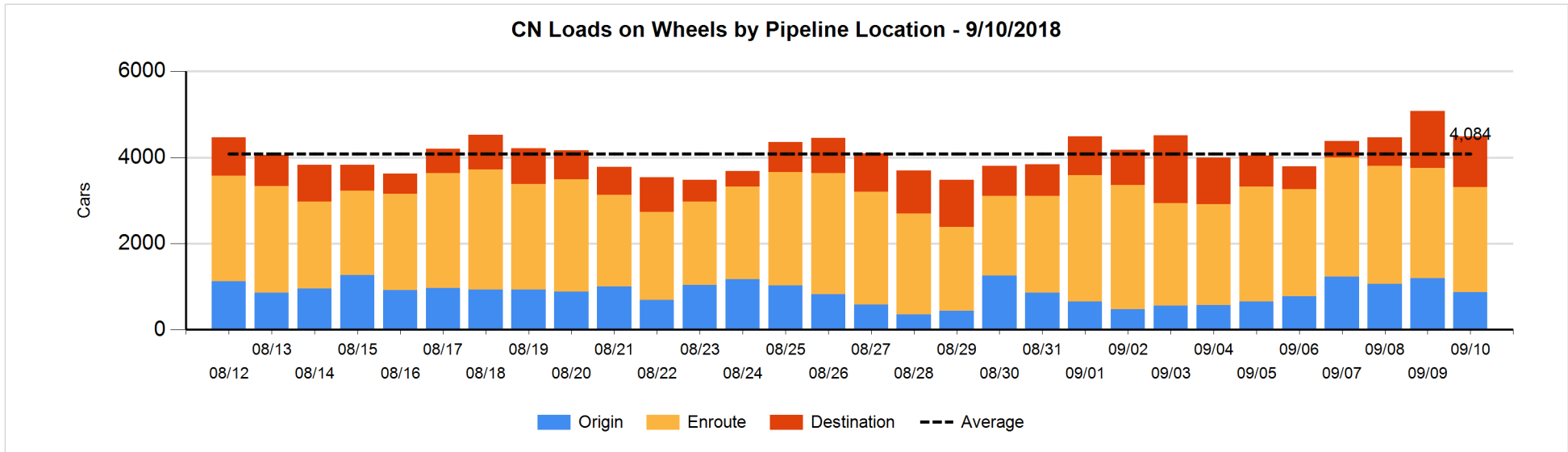


**Daily Loads on Wheels By Pipeline Location - 9/10/2018**

	E Canada	Prince Rupert	Thunder Bay	USA/MEX	Vancouver	Total
CN						
Origin	177	326		59	313	875
Enroute	153	503	400	143	1,235	2,434
Destination	77	270	276	17	542	1,182
	407	1,099	676	219	2,090	4,491
CP						
Origin	82		217	36	1,158	1,493
Enroute	95		99	441	946	1,581
Destination			787	29	534	1,350
	177		1,103	506	2,638	4,424
US Rail / Short Line						
Origin						
Enroute	7			164		171
Destination	11			121	26	158
	18			285	26	329

**Change in Daily Loads on Wheels By Pipeline Location - Prior 24 Hours**

	E Canada	Prince Rupert	Thunder Bay	USA/MEX	Vancouver	Total
CN						
Origin	77	-98	-341	30	15	-317
Enroute	-30	3	189	-36	-254	-128
Destination	-54	-105	20	0	-2	-141
	-7	-200	-132	-6	-241	-586
CP						
Origin	-24		64	-73	27	-6
Enroute	14		-328	94	-39	-259
Destination			122	2	-169	-45
	-10		-142	23	-181	-310
US Rail / Short Line						
Origin						
Enroute	5			-48		-43
Destination	1			25	-7	19
	6			-23	-7	-24

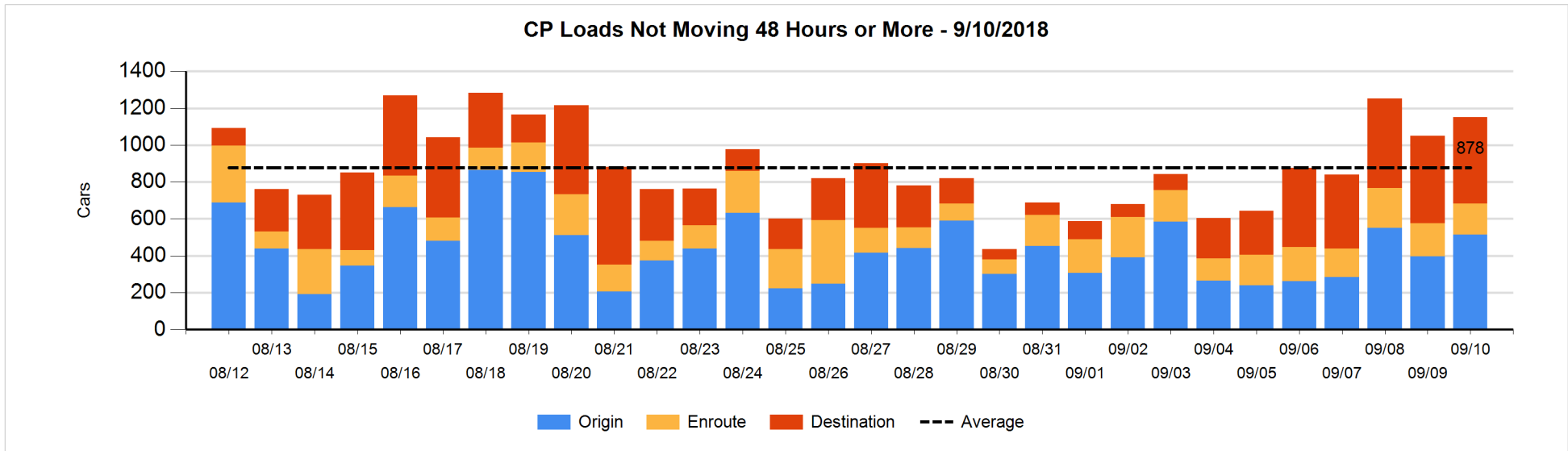
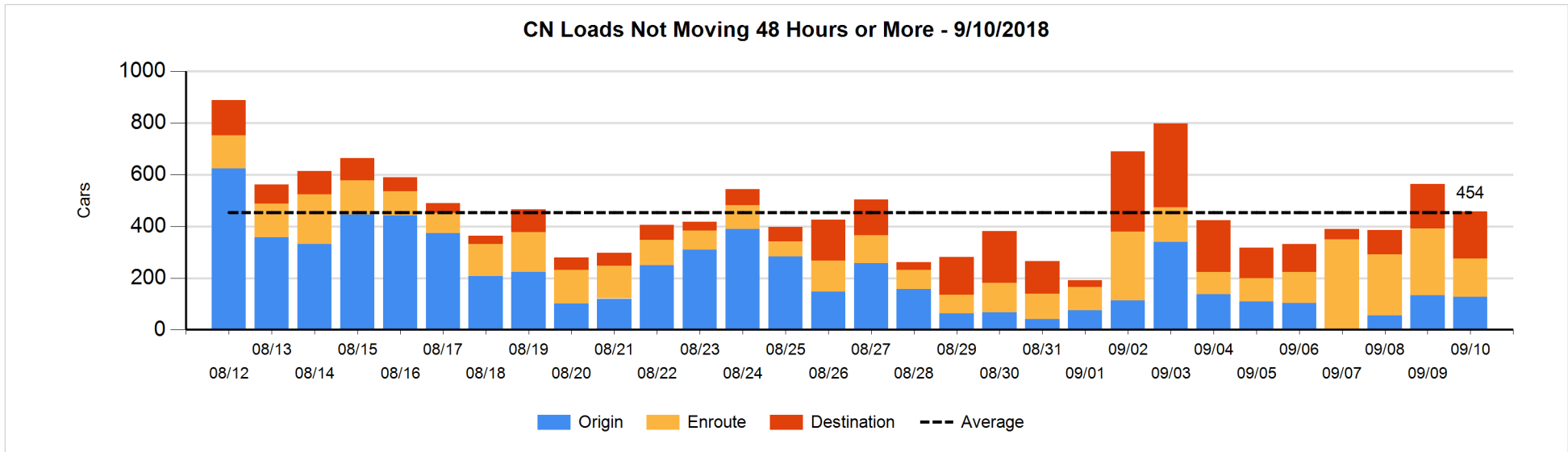


**Loads Not Moving 48 Hours or More - 9/10/2018**

	E Canada	Prince Rupert	Thunder Bay	USA/MEX	Vancouver	Total
<b>CN</b>						
Origin		20		3	105	128
Enroute	18	6	4	57	63	148
Destination	14	6	117	2	43	182
	32	32	121	62	211	458
<b>CP</b>						
Origin	25			8	481	514
Enroute	2		6	89	73	170
Destination			316	25	125	466
	27		322	122	679	1150
<b>US Rail / Short Line</b>						
Origin						
Enroute	2			20		22
Destination				30	15	45
	2			50	15	67

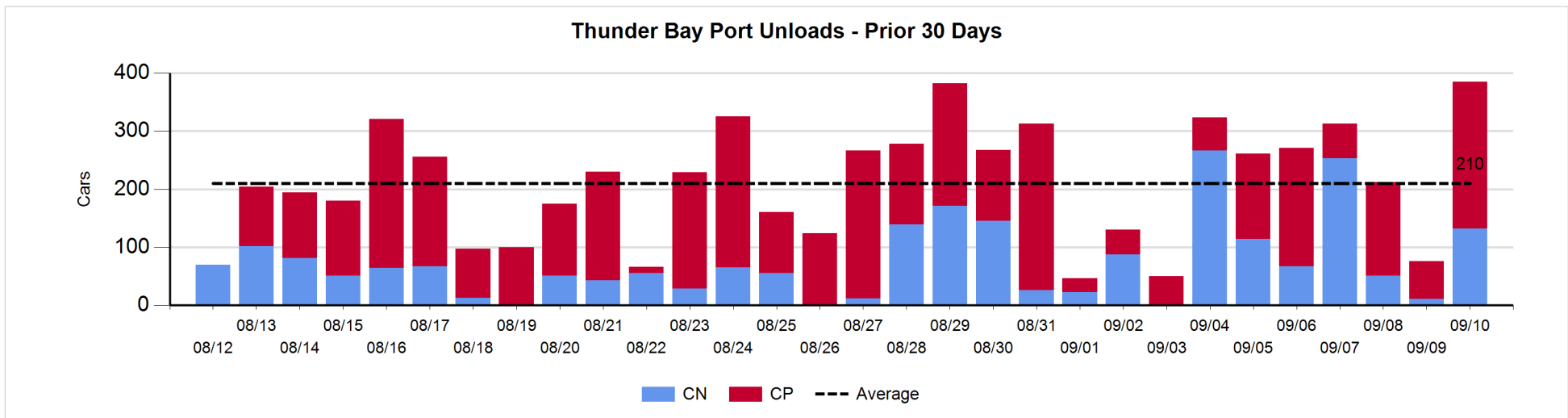
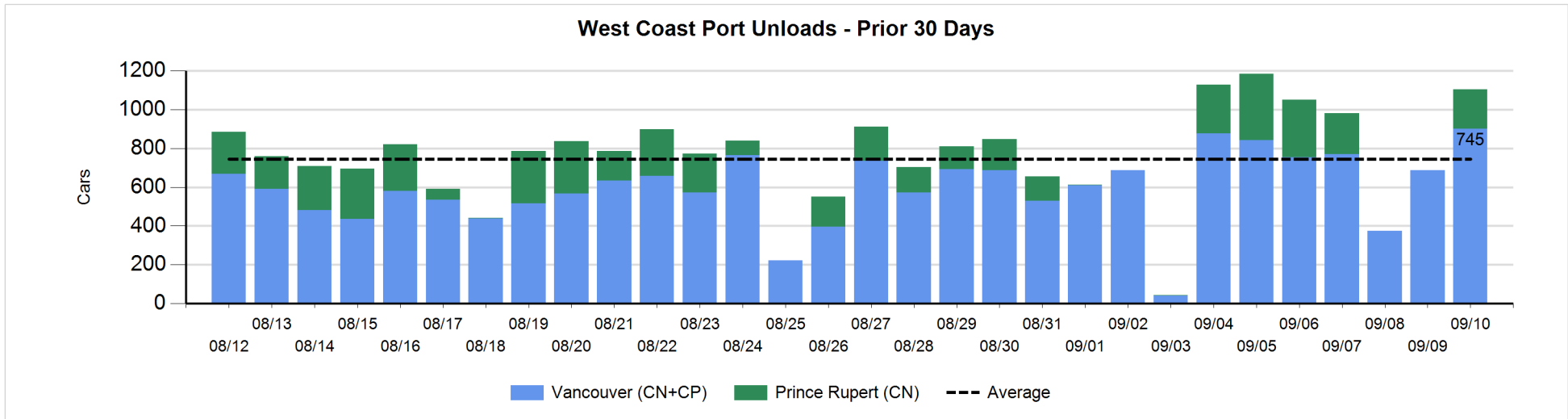
**Change in Loads Not Moving 48 Hours or More - 9/10/2018**

	E Canada	Prince Rupert	Thunder Bay	USA/MEX	Vancouver	Total
<b>CN</b>						
Origin		0		-2	-4	-6
Enroute	2	-11	0	-8	-92	-109
Destination	-7	0	33	-1	-15	10
	-5	-11	33	-11	-111	-105
<b>CP</b>						
Origin	-2			-1	120	117
Enroute	-2		-6	0	-1	-9
Destination			19	0	-27	-8
	-4		13	-1	92	100
<b>US Rail / Short Line</b>						
Origin						
Enroute	1			-14		-13
Destination				-19	-1	-20
	1			-33	-1	-33



**Port Unloads - 9/10/2018**

	Prince Rupert	Vancouver	West Coast Total	Thunder Bay	Total
CN	205	506	711	132	843
CP		394	394	253	647
	205	900	1,105	385	1,490





**Port Terminal Status**

**Vancouver**

Daily Activity for 9/10/2018

	Cars Arrived	Cars Received in Interchange	Cars Delivered in Interchange	Cars Placed for Unloading	Loads on Wheels at Destination As of 9/10/2018
CN	382	228	93	456	542
CP	349	93	228	307	534
SRY				11	26

**Port Unloads**

	09/10	09/09	Week To Date	Last Week
CN	506	271	506	1,893
CP	394	416	394	2,452
SRY	9		9	48

**Age Profile of Loaded Cars Waiting Placement for Unloading**

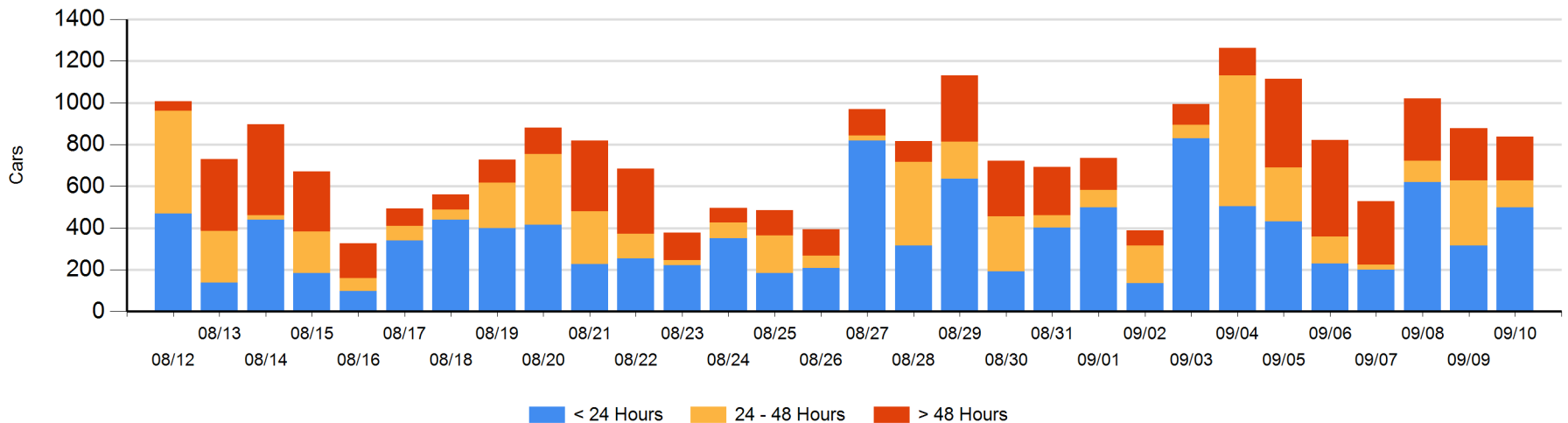
**Today**

	< 24 Hrs	24 - 48 Hrs	> 48-72 Hrs	> 72 Hrs	Total On Hand
CN	157	99	6	123	385
CP	341	30	23	58	452
SRY					0

**Change in Last 24 Hours**

	< 24 Hrs	24-48 Hrs	48 - 72 Hrs	> 72 Hrs
CN	-119	77	6	-30
CP	300	-259	-17	0
SRY				

**Loaded Cars on Hand Vancouver Waiting for Placement - Last 30 Days All Railways**



**Port Terminal Status**

**Prince Rupert**

Daily Activity for 9/10/2018

	Cars Arrived	Cars Received in Interchange	Cars Delivered in Interchange	Cars Placed for Unloading	Loads on Wheels at Destination As of 9/10/2018
CN	100			100	270

**Port Unloads**

	09/10	09/09	Week To Date	Last Week
CN	205		205	1,103

**Age Profile of Loaded Cars Waiting Placement for Unloading**

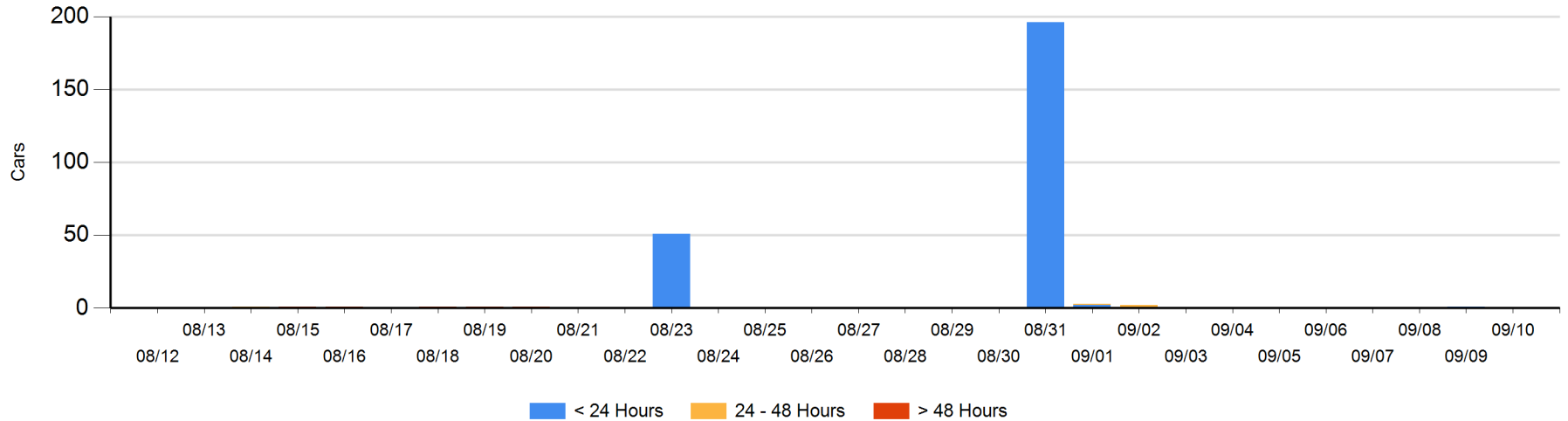
**Today**

	< 24 Hrs	24 - 48 Hrs	> 48-72 Hrs	> 72 Hrs	Total On Hand
CN					0

**Change in Last 24 Hours**

	< 24 Hrs	24-48 Hrs	48 - 72 Hrs	> 72 Hrs
CN	-1			

Loaded Cars on Hand Prince Rupert Waiting for Placement - Last 30 Days All Railways



**Port Terminal Status**

**Thunder Bay**

Daily Activity for 9/10/2018

	Cars Arrived	Cars Received in Interchange	Cars Delivered in Interchange	Cars Placed for Unloading	Loads on Wheels at Destination As of 9/10/2018
CN	152			9	276
CP	376			156	787

**Port Unloads**

	09/10	09/09	Week To Date	Last Week
CN	132	11	132	762
CP	253	65	253	744

**Age Profile of Loaded Cars Waiting Placement for Unloading**

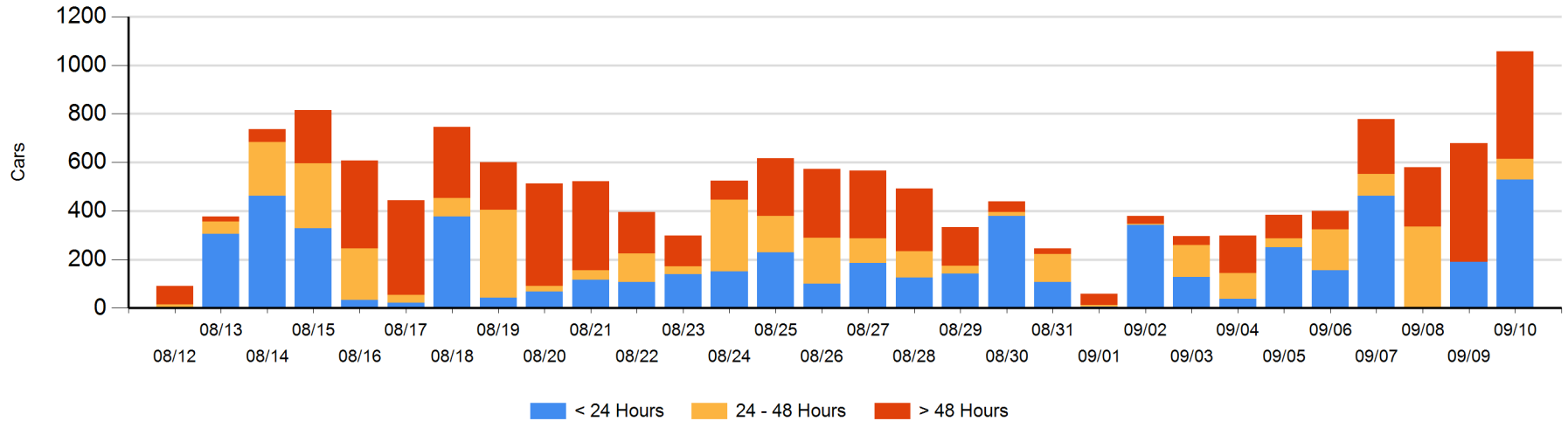
**Today**

	< 24 Hrs	24 - 48 Hrs	> 48-72 Hrs	> 72 Hrs	Total On Hand
CN	152			98	250
CP	376	86		345	807

**Change in Last 24 Hours**

	< 24 Hrs	24-48 Hrs	48 - 72 Hrs	> 72 Hrs
CN	143		-98	96
CP	194	86	-160	118

**Loaded Cars on Hand Thunder Bay Waiting for Placement - Last 30 Days All Railways**



## Measurement Definitions

Loads on Wheels	<p>Count of loaded rail cars including all rail cars that have been released loaded at origin and have not been reported by the railway as unloaded at destination.</p> <p>Counts include all rail cars (hopper cars and boxcars) moving within a pipeline.</p>
Loads Not Moving	<p>Loaded rail cars for which the railways have not reported a movement event for 48 hours or more whether the rail car is at origin, enroute or at destination.</p>
Port Unloads	<p>Count of rail cars reported by railways as unloaded at the western port destinations of Vancouver, Prince Rupert and Thunder Bay.</p> <p>Unload counts include all rail cars (hopper cars and boxcars) unloaded by all receivers including major port terminals, transloaders and other receivers.</p>
Cars Arrived	<p>Count of rail cars reported as arrived at the destination railway terminal.</p>
Cars Received in Interchange	<p>Count of rail cars received in interchange by each railway within a destination railway terminal. Interchange activity is tracked for the Vancouver and Thunder Bay pipelines as applicable.</p>
Cars Delivered in Interchange	<p>Count of rail cars delivered in interchange by each railway within a destination railway terminal. Interchange activity is tracked for the Vancouver and Thunder Bay pipelines as applicable.</p>
Cars Placed for Unloading	<p>Count of rail cars reported by the railways as placed loaded at the receiver's facility for unloading.</p>
Loads on Wheels at Destination	<p>Count of rail cars that remain under load within the destination railway terminal including rail cars that have been reported as placed for unloading but not yet reported as unloaded.</p>
Waiting Placement for Unloading	<p>Count of rail cars that have been reported as arrived at the destination railway terminal but not reported as placed for unloading by the railway.</p> <p>For the Ports of Vancouver, Prince Rupert and Thunder Bay the count of rail cars waiting placement for unloading is categorized by age – i.e. the elapsed time from arrival at destination to the current report date.</p>