

## SPEED READ

- Loads on wheels decreased overnight, marking a decline in CN volumes offset by higher CP volumes. On a net basis, volumes decreased due to lower traffic across all corridors other than Thunder Bay.
- Network fluidity deteriorated overnight, led by an increase in idle car counts on both CN and CP by 25% (+310) and 1% (+11), respectively. The total count of cars for 4+ days on both railways gained 28% (+453) overnight - currently at 2,071 cars, the highest seen in the last 30 days.
- Two days in Week 28 unloads now behind prior week's performance by more than 350 unloads, reflecting lower unloads across all three major ports - Vancouver, Thunder Bay and Prince Rupert.

---

## Loads on Wheels

- Loads on wheels declined 2% (-177) overnight, due to lower traffic on CN offset by higher volumes on CP - combined total at 10,534 and 5% above the trailing 30-day average.
- On a net basis, the decline in loads on wheels indicates lower volumes across all corridors other than Thunder Bay.
- CN volumes fell 4% (-235) overnight, with reduced volumes across all corridors other than USA/MEX. System wide CN loads on wheels now at 5,802 and 14% above the trailing 30-day average.
- CP volumes increased 2% (+79) overnight, driven by an increase in volumes in the Vancouver corridor offset by a decline in volumes in the USA/MEX and E. Canada corridors. CP system wide loads on wheels currently at 4,495 and 4% below the trailing 30-day average.
- Vancouver now at 6,741, declined marginally by 1% (-81) overnight, now 5% above the trailing 30-day average.
- The Prince Rupert pipeline now at 1,693, decreased slightly (-7) overnight, and 15% above the trailing 30-day average.
- Thunder Bay volumes remained unchanged (0) overnight - now at 5, the lowest seen in the last 30 days, and 98% below the trailing 30-day average, with 100% of traffic moving on CP.

## Hopper Car Rationing

- No hopper car rationing was reported for either CN or CP in week 26.

## Loads Not Moving

- **The count of cars not moving for 48+ hours increased 9% (+321) overnight, reflecting higher counts on both CN and CP. Idle car counts currently at 3,741, the highest seen in the last 30 days, and 59% above the trailing 30-day average.**
- CN
  - **The count of idle cars for 48+ hours rose for the fourth consecutive day, up 25% (+310) overnight - currently at 1,535 cars, the highest seen in the last 30 days.**
  - The number of cars idle for 4+ days surged by 48% (+210) overnight - currently at 646 cars, the highest seen in the last 30 days.
  - The count of cars not moving for 7+ days gained 12% (+14) overnight - now at 128 cars.
  - Vancouver represents 68% of all idle cars.
  - In total 63% of all idle cars are dwelling at origin locations.
- CP
  - **CP idle car counts for 48+ hours increased marginally by 1% (+11) overnight - now at 2,206 cars.**
  - The number of cars idle for 4+ days gained 21% (+243) overnight - now at 1,425 cars, the highest seen in the last 30 days.

- The number of cars idle for 7+ days increased for the third consecutive day, up 15% (+56) overnight - currently at 418 cars.
- Vancouver accounts for 81% of all idle cars.
- In total 65% of all idle cars are dwelling at origin locations.

### **Port Performance**

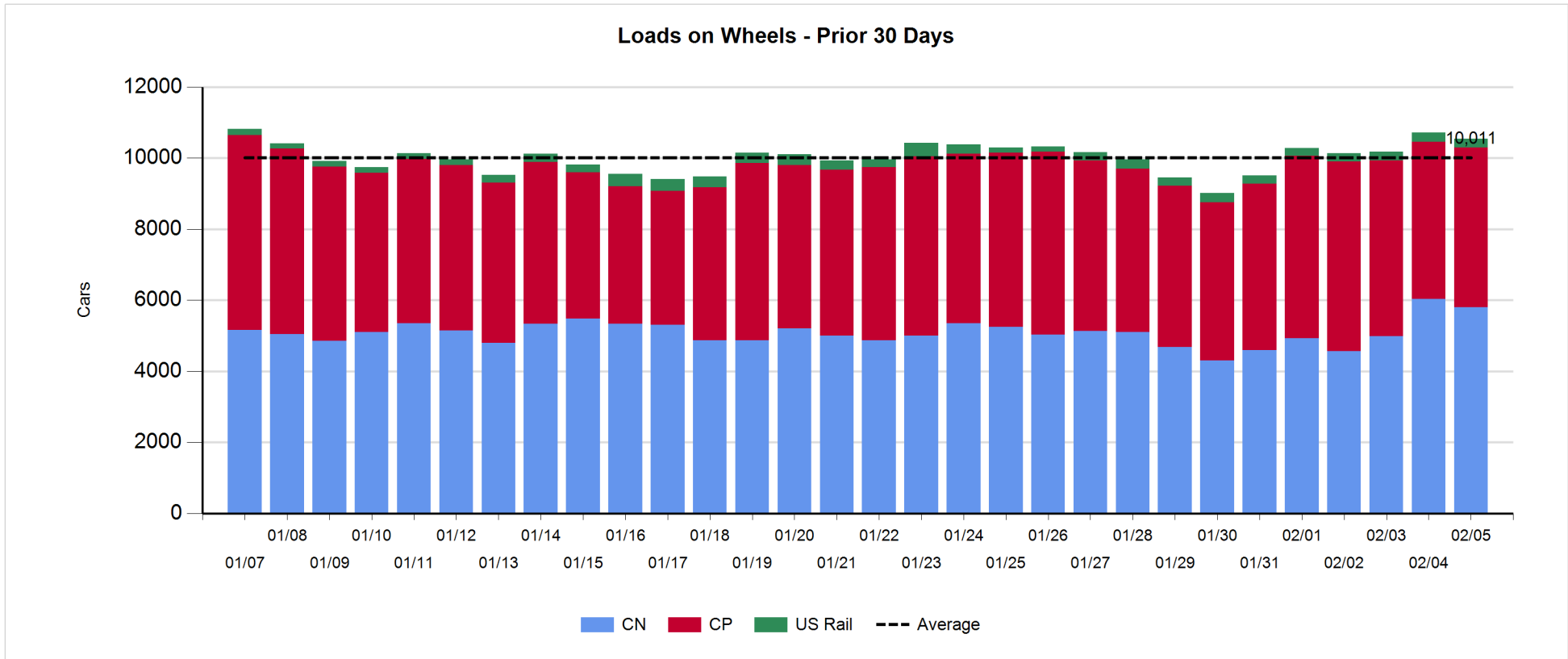
- CN and CP reported a total of 858 cars unloaded at the three major ports, now 17% below the trailing 30 day-average. Two days in Week 28 unloads now behind last week's pace by more than 350 unloads, reflecting lower unloads across all three major ports - Vancouver, Thunder Bay and Prince Rupert.
- Vancouver
  - 702 unloads reported by CN and CP at the Port of Vancouver; CN - 433 and CP - 269. Two days in Week 28 unloads are tracking behind last week's performance by 100 unloads.
  - There are more than 900 cars on site at Vancouver with less than 300 cars arriving at the port in the last 24 hours.
  - CN and CP have more than 950 cars in British Columbia en route to Vancouver, with 350 cars at Kamloops and west, and 55% of traffic moving on CP.
- Prince Rupert
  - Prince Rupert reported 156 unloads, now behind last week's unloads after two days by 200 unloads.
  - Loads on wheels now above 1,000 cars - now at 1,693 cars.
  - There are around 500 cars west of Jasper en route to Prince Rupert.
  - There are more than 50 cars on site at Prince Rupert with 1 car arriving at the port in the last 24 hours.
- Thunder Bay
  - Zero unloads were reported at Thunder Bay yesterday. Two days in Week 28 unloads are tracking behind last week's pace by less than 100 unloads.
  - There are 5 cars on site at Thunder Bay with zero cars arriving at the port in the prior 24 hours.
  - There are zero cars en route to Thunder Bay from Winnipeg and east.

**Daily Loads on Wheels - 2/5/2019**

	E Canada	Prince Rupert	Thunder Bay	USA/MEX	Vancouver	Total
CN	762	1,693		209	3,138	5,802
CP	608		5	327	3,555	4,495
Short Line	24				48	72
US Rail				165		165
	1,394	1,693	5	701	6,741	10,534

**Change in Loads on Wheels - Prior 24 Hours**

	E Canada	Prince Rupert	Thunder Bay	USA/MEX	Vancouver	Total
CN	-61	-7		21	-188	-235
CP	-4		0	-51	134	79
Short Line	-15				-27	-42
US Rail				21		21
	-80	-7	0	-9	-81	-177

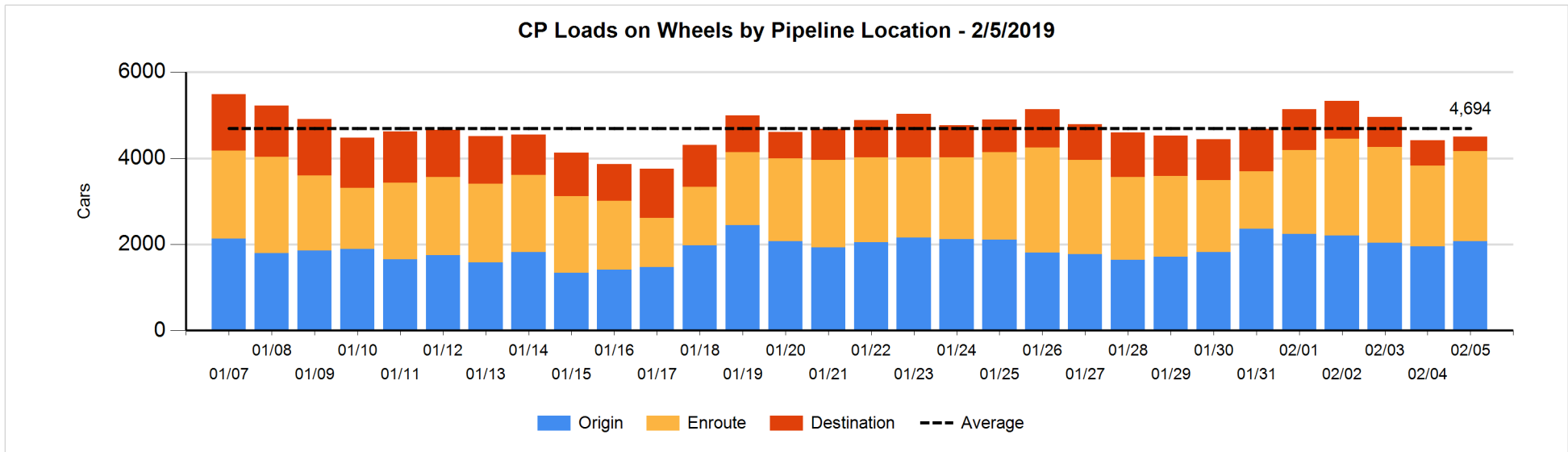
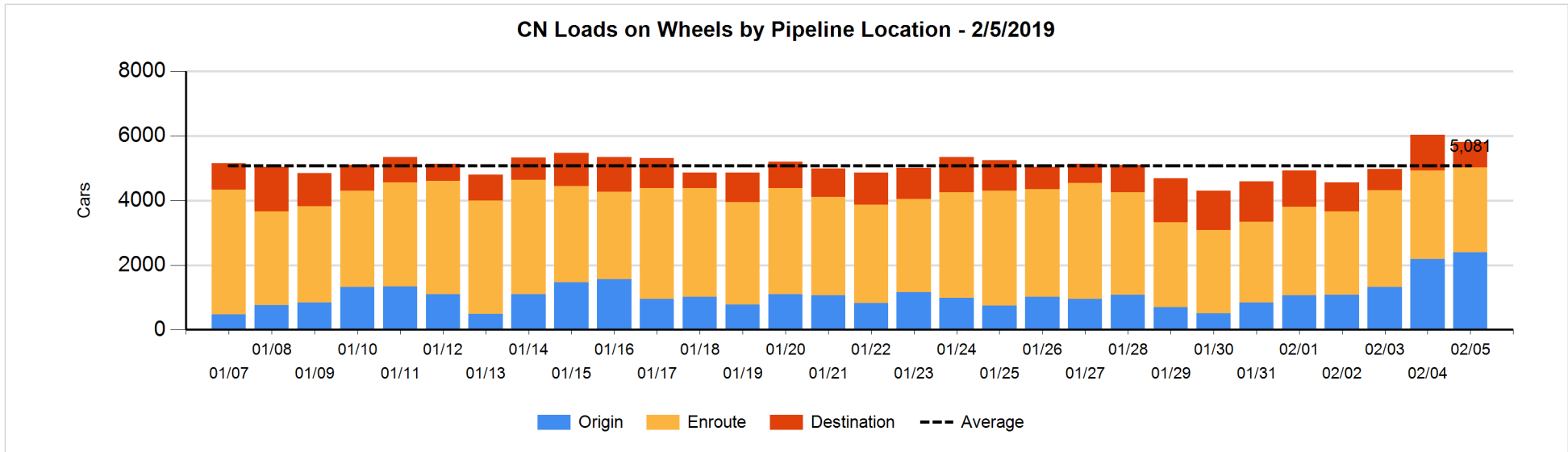


**Daily Loads on Wheels By Pipeline Location - 2/5/2019**

	E Canada	Prince Rupert	Thunder Bay	USA/MEX	Vancouver	Total
CN						
Origin	102	798		36	1,451	2,387
Enroute	508	832		158	1,135	2,633
Destination	152	63		15	552	782
	762	1,693		209	3,138	5,802
CP						
Origin	271			7	1,794	2,072
Enroute	337			304	1,447	2,088
Destination			5	16	314	335
	608		5	327	3,555	4,495
US Rail / Short Line						
Origin						
Enroute				69		69
Destination	24			96	48	168
	24			165	48	237

**Change in Daily Loads on Wheels By Pipeline Location - Prior 24 Hours**

	E Canada	Prince Rupert	Thunder Bay	USA/MEX	Vancouver	Total
CN						
Origin	0	49		4	155	208
Enroute	-101	99		14	-121	-109
Destination	40	-155		3	-222	-334
	-61	-7		21	-188	-235
CP						
Origin	-80			-122	326	124
Enroute	76			78	58	212
Destination			0	-7	-250	-257
	-4		0	-51	134	79
US Rail / Short Line						
Origin						
Enroute				-5		-5
Destination	-15			26	-27	-16
	-15			21	-27	-21

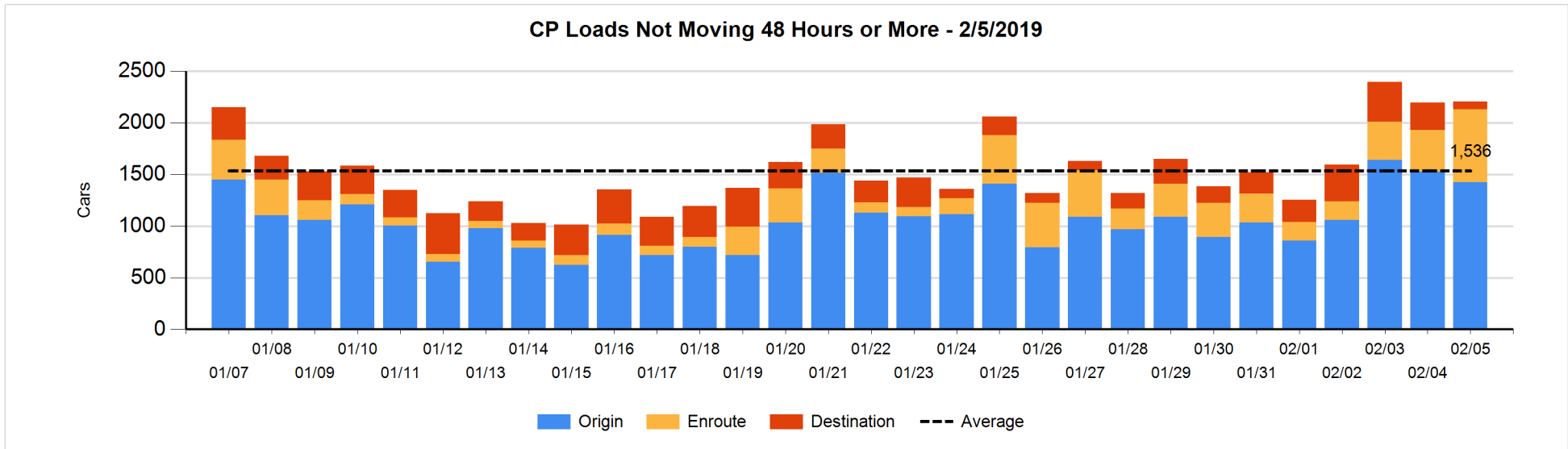
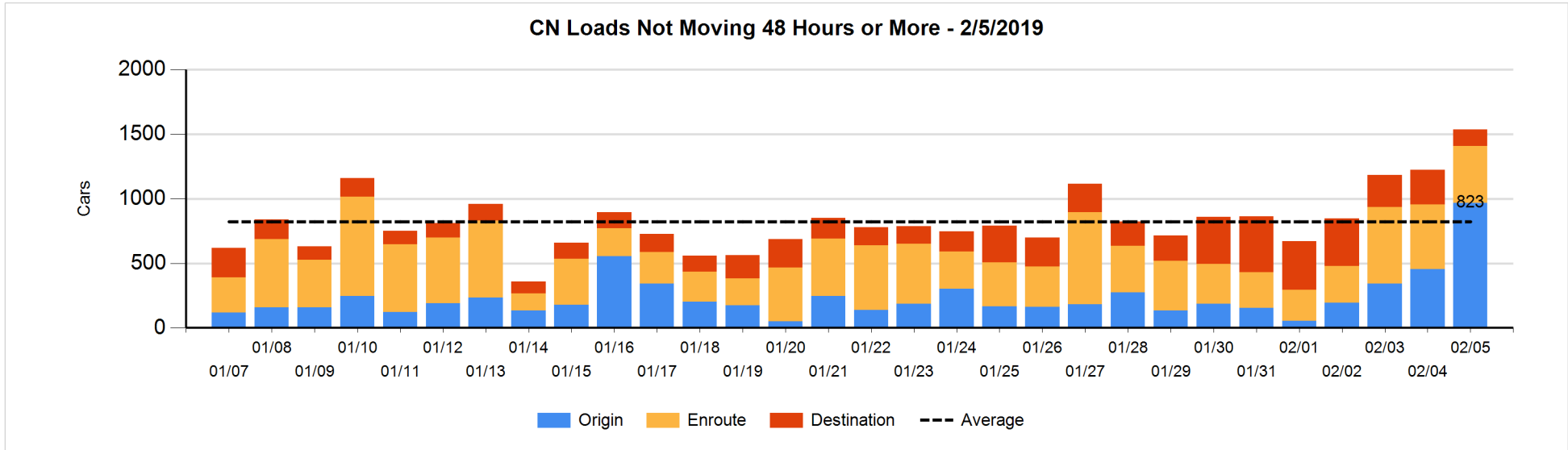


**Loads Not Moving 48 Hours or More - 2/5/2019**

	E Canada	Prince Rupert	Thunder Bay	USA/MEX	Vancouver	Total
<b>CN</b>						
Origin	102	106		15	744	967
Enroute	31	188		18	204	441
Destination	13	12		6	96	127
	146	306		39	1044	1535
<b>CP</b>						
Origin	271			4	1150	1425
Enroute	6			110	589	705
Destination			4	16	56	76
	277		4	130	1795	2206
<b>US Rail / Short Line</b>						
Origin						
Enroute				30		30
Destination	3			28	25	56
	3			58	25	86

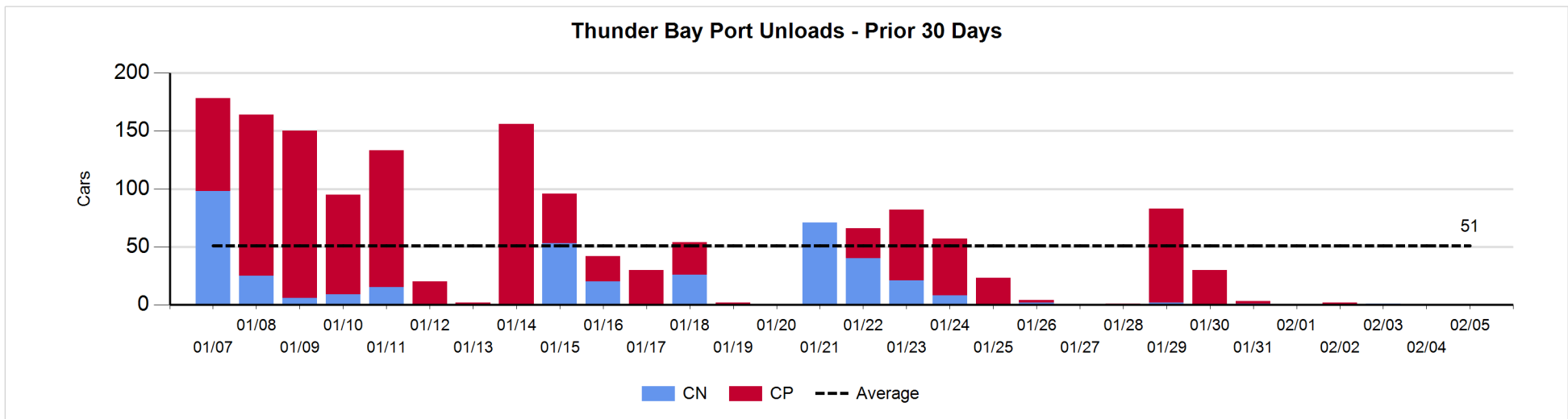
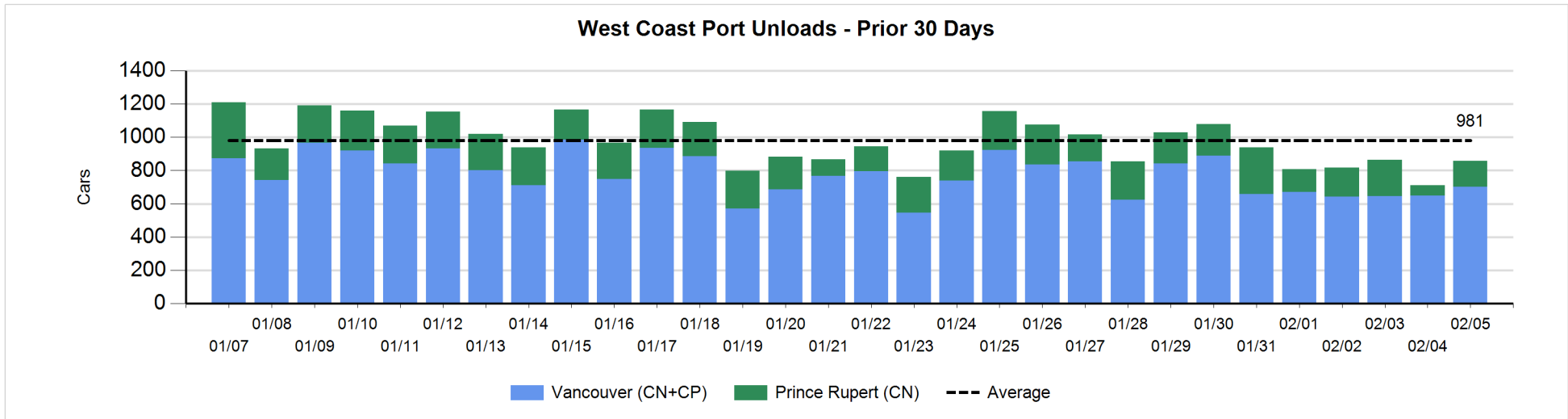
**Change in Loads Not Moving 48 Hours or More - 2/5/2019**

	E Canada	Prince Rupert	Thunder Bay	USA/MEX	Vancouver	Total
<b>CN</b>						
Origin	102	4		0	408	514
Enroute	-28	36		5	-73	-60
Destination	5	-99		1	-51	-144
	79	-59		6	284	310
<b>CP</b>						
Origin	33			-125	-6	-98
Enroute	-3			0	300	297
Destination			0	-2	-186	-188
	30		0	-127	108	11
<b>US Rail / Short Line</b>						
Origin						
Enroute				-14		-14
Destination	-11			-12	-3	-26
	-11			-26	-3	-40



Port Unloads - 2/5/2019

	Prince Rupert	Vancouver	West Coast Total	Thunder Bay	Total
CN	156	433	589		589
CP		269	269		269
	156	702	858		858





**Port Terminal Status**

**Vancouver**

Daily Activity for 2/5/2019

	Cars Arrived	Cars Received in Interchange	Cars Delivered in Interchange	Cars Placed for Unloading	Loads on Wheels at Destination As of 2/5/2019
CN	227	123	25	270	552
CP	59	25	123	296	314
SRY	1			8	48

**Port Unloads**

	02/05	02/04	Week To Date	Last Week
CN	433	216	649	2,108
CP	269	434	703	2,863
SRY	28	15	43	103

**Age Profile of Loaded Cars Waiting Placement for Unloading**

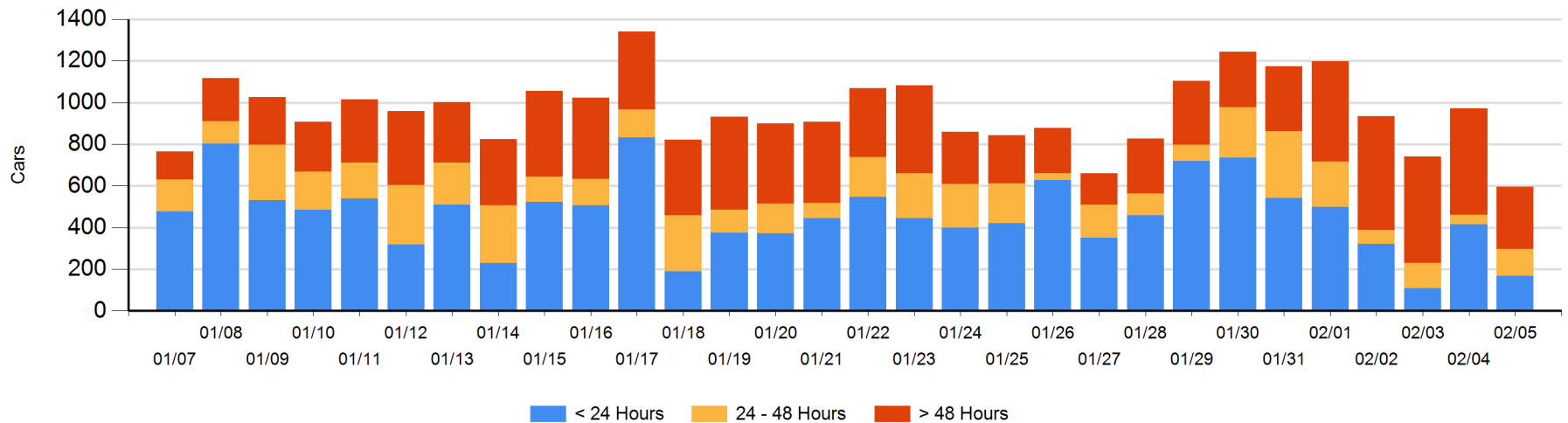
**Today**

	< 24 Hrs	24 - 48 Hrs	> 48-72 Hrs	> 72 Hrs	Total On Hand
CN	110	21		129	260
CP	59	108	21	149	337
SRY					0

**Change in Last 24 Hours**

	< 24 Hrs	24-48 Hrs	48 - 72 Hrs	> 72 Hrs
CN	9	21	-50	-45
CP	-256	62	-12	-104
SRY				

**Loaded Cars on Hand Vancouver Waiting for Placement - Last 30 Days All Railways**



**Port Terminal Status**

**Prince Rupert**

Daily Activity for 2/5/2019

	Cars Arrived	Cars Received in Interchange	Cars Delivered in Interchange	Cars Placed for Unloading	Loads on Wheels at Destination As of 2/5/2019
CN	1			99	63

**Port Unloads**

	02/05	02/04	Week To Date	Last Week
CN	156	62	218	1,420

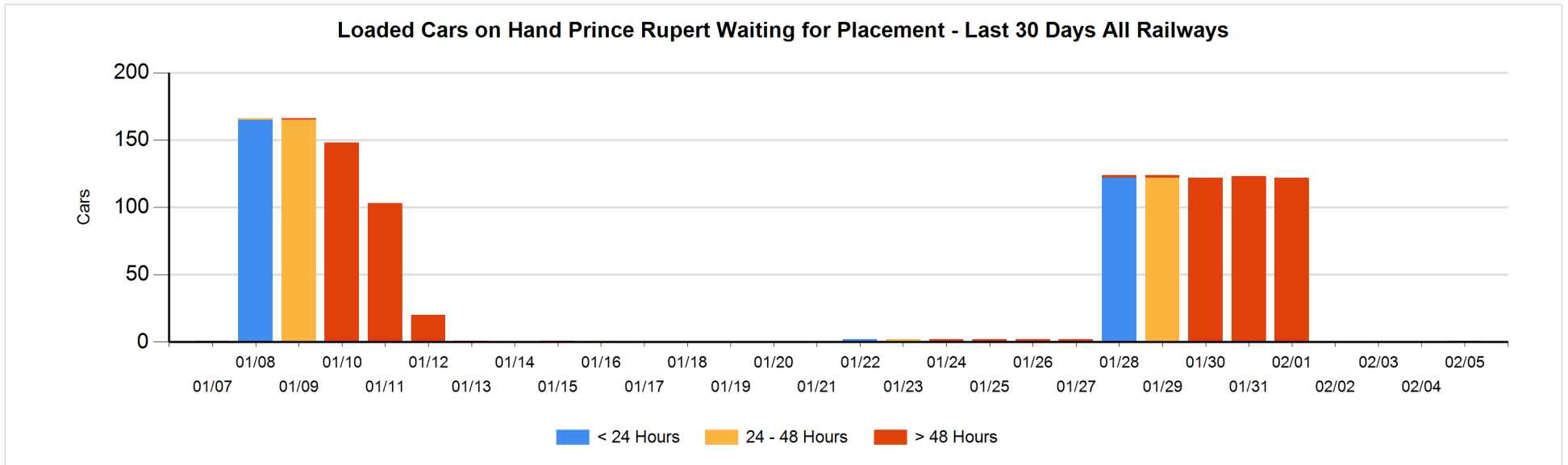
**Age Profile of Loaded Cars Waiting Placement for Unloading**

**Today**

	< 24 Hrs	24 - 48 Hrs	> 48-72 Hrs	> 72 Hrs	Total On Hand
CN	1				1

**Change in Last 24 Hours**

	< 24 Hrs	24-48 Hrs	48 - 72 Hrs	> 72 Hrs
CN	1			



**Port Terminal Status**

**Thunder Bay**

Daily Activity for 2/5/2019

	Cars Arrived	Cars Received in Interchange	Cars Delivered in Interchange	Cars Placed for Unloading	Loads on Wheels at Destination As of 2/5/2019
CN					
CP					5

**Port Unloads**

	02/05	02/04	Week To Date	Last Week
CN				4
CP				116

**Age Profile of Loaded Cars Waiting Placement for Unloading**

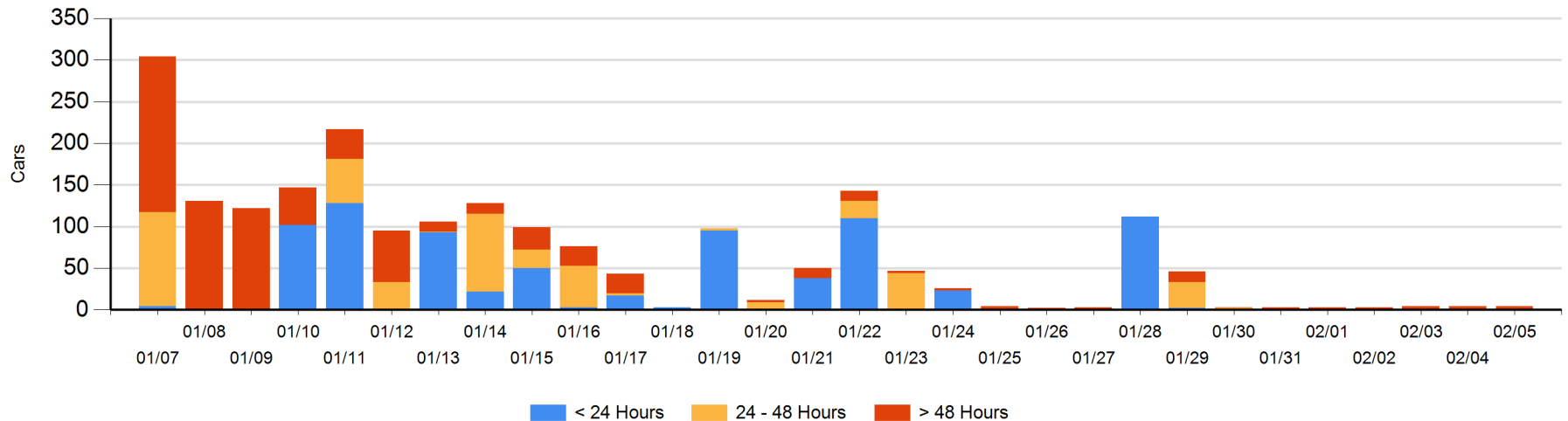
**Today**

	< 24 Hrs	24 - 48 Hrs	> 48-72 Hrs	> 72 Hrs	Total On Hand
CN					0
CP			1	3	4

**Change in Last 24 Hours**

	< 24 Hrs	24-48 Hrs	48 - 72 Hrs	> 72 Hrs
CN				
CP		-1	1	0

**Loaded Cars on Hand Thunder Bay Waiting for Placement - Last 30 Days All Railways**



## Measurement Definitions

Loads on Wheels	<p>Count of loaded rail cars including all rail cars that have been released loaded at origin and have not been reported by the railway as unloaded at destination.</p> <p>Counts include all rail cars (hopper cars and boxcars) moving within a pipeline.</p>
Loads Not Moving	<p>Loaded rail cars for which the railways have not reported a movement event for 48 hours or more whether the rail car is at origin, enroute or at destination.</p>
Port Unloads	<p>Count of rail cars reported by railways as unloaded at the western port destinations of Vancouver, Prince Rupert and Thunder Bay.</p> <p>Unload counts include all rail cars (hopper cars and boxcars) unloaded by all receivers including major port terminals, transloaders and other receivers.</p>
Cars Arrived	<p>Count of rail cars reported as arrived at the destination railway terminal.</p>
Cars Received in Interchange	<p>Count of rail cars received in interchange by each railway within a destination railway terminal. Interchange activity is tracked for the Vancouver and Thunder Bay pipelines as applicable.</p>
Cars Delivered in Interchange	<p>Count of rail cars delivered in interchange by each railway within a destination railway terminal. Interchange activity is tracked for the Vancouver and Thunder Bay pipelines as applicable.</p>
Cars Placed for Unloading	<p>Count of rail cars reported by the railways as placed loaded at the receiver's facility for unloading.</p>
Loads on Wheels at Destination	<p>Count of rail cars that remain under load within the destination railway terminal including rail cars that have been reported as placed for unloading but not yet reported as unloaded.</p>
Waiting Placement for Unloading	<p>Count of rail cars that have been reported as arrived at the destination railway terminal but not reported as placed for unloading by the railway.</p> <p>For the Ports of Vancouver, Prince Rupert and Thunder Bay the count of rail cars waiting placement for unloading is categorized by age – i.e. the elapsed time from arrival at destination to the current report date.</p>