

SPEED READ

- Loads on wheels decreased overnight, marking a decline in both CN and CP volumes. On a net basis, volumes fell due to lower traffic across all corridors other than Prince Rupert.
- Network fluidity deteriorated overnight, led by a rise in idle car counts on both CN and CP by 33% (+514) and 3% (+65), respectively. The total count of cars for 4+ days on both railways declined 6% (-124) overnight - currently at 1,948 cars.
- Three days in Week 28 unloads now behind prior week's performance by more than 700 unloads, reflecting reduced unloads across all three major ports - Vancouver, Thunder Bay and Prince Rupert.

Loads on Wheels

- Loads on wheels decreased 4% (-431) overnight, due to lower traffic on both CN and CP - combined total at 10,142 and 2% above the trailing 30-day average.
- On a net basis, the decline in loads on wheels indicates reduced traffic across all corridors other than Prince Rupert.
- CN volumes decreased 6% (-376) overnight, with lower traffic across all corridors other than Prince Rupert. System wide CN loads on wheels currently at 5,484 and 8% above the trailing 30-day average.
- CP volumes decreased slightly by 1% (-50) overnight, driven by a decline in traffic across all corridors other than Vancouver. CP system wide loads on wheels now at 4,439 and 5% below the trailing 30-day average.
- Vancouver now at 6,442, decreased 5% (-350) overnight, now 1% above the trailing 30-day average.
- The Prince Rupert pipeline currently at 1,718, increased slightly by 1% (+25) overnight, and 17% above the trailing 30-day average.
- Thunder Bay volumes remained unchanged (0) overnight - now at 5, the lowest seen in the last 30 days, and 98% below the trailing 30-day average, with 100% of traffic moving on CP.

Hopper Car Rationing

- No hopper car rationing was reported for either CN or CP in week 26.

Loads Not Moving

- **The count of cars not moving for 48+ hours increased 16% (+579) overnight, marking higher counts on both CN and CP. Idle car counts now at 4,209, the highest seen in the last 30 days, and 75% above the trailing 30-day average.**
- CN
 - **The count of idle cars for 48+ hours gained for the fifth consecutive day, up 33% (+514) overnight - now at 2,050 cars, the highest seen in the last 30 days.**
 - The number of cars idle for 4+ days declined 24% (-155) overnight - currently at 492 cars.
 - The count of cars not moving for 7+ days increased 44% (+56) overnight - presently at 184 cars.
 - Vancouver represents 52% of all idle cars.
 - In total 74% of all idle cars are dwelling at origin locations.
- CP
 - **CP idle car counts for 48+ hours rose 3% (+65) overnight - presently at 2,159 cars.**
 - The number of cars idle for 4+ days gained for the third consecutive day, up 2% (+31) overnight - now at 1,456 cars, the highest seen in the last 30 days.

- The number of cars idle for 7+ days decreased 16% (-65) overnight - currently at 353 cars.
- Vancouver accounts for 83% of all idle cars.
- In total 65% of all idle cars are dwelling at origin locations.

Port Performance

- CN and CP reported a total of 784 cars unloaded at the three major ports, now 23% below the trailing 30 day-average. Three days in Week 28 unloads now behind last week's pace by more than 700 unloads, reflecting reduced unloads across all three major ports - Vancouver, Thunder Bay and Prince Rupert.
- Vancouver
 - 621 unloads reported by CN and CP at the Port of Vancouver; CN - 367 and CP - 254. Three days in Week 28 unloads are tracking behind last week's performance by more than 350 unloads.
 - There are 800 cars on site at Vancouver with more than 400 cars arriving at the port in the last 24 hours.
 - CN and CP have around 950 cars in British Columbia en route to Vancouver, with around 250 cars at Kamloops and west, and 59% of traffic moving on CP.
- Prince Rupert
 - Prince Rupert reported 163 unloads, now behind last week's unloads after three days by more than 200 unloads.
 - Loads on wheels now above 1,000 cars - presently at 1,718 cars.
 - There are more than 400 cars west of Jasper en route to Prince Rupert.
 - There are more than 50 cars on site at Prince Rupert with more than 150 cars arriving at the port in the last 24 hours.
- Thunder Bay
 - Zero unloads were reported at Thunder Bay yesterday. Three days in Week 28 unloads are tracking behind last week's pace by more than 100 unloads.
 - There are 5 cars on site at Thunder Bay with zero cars arriving at the port in the prior 24 hours.

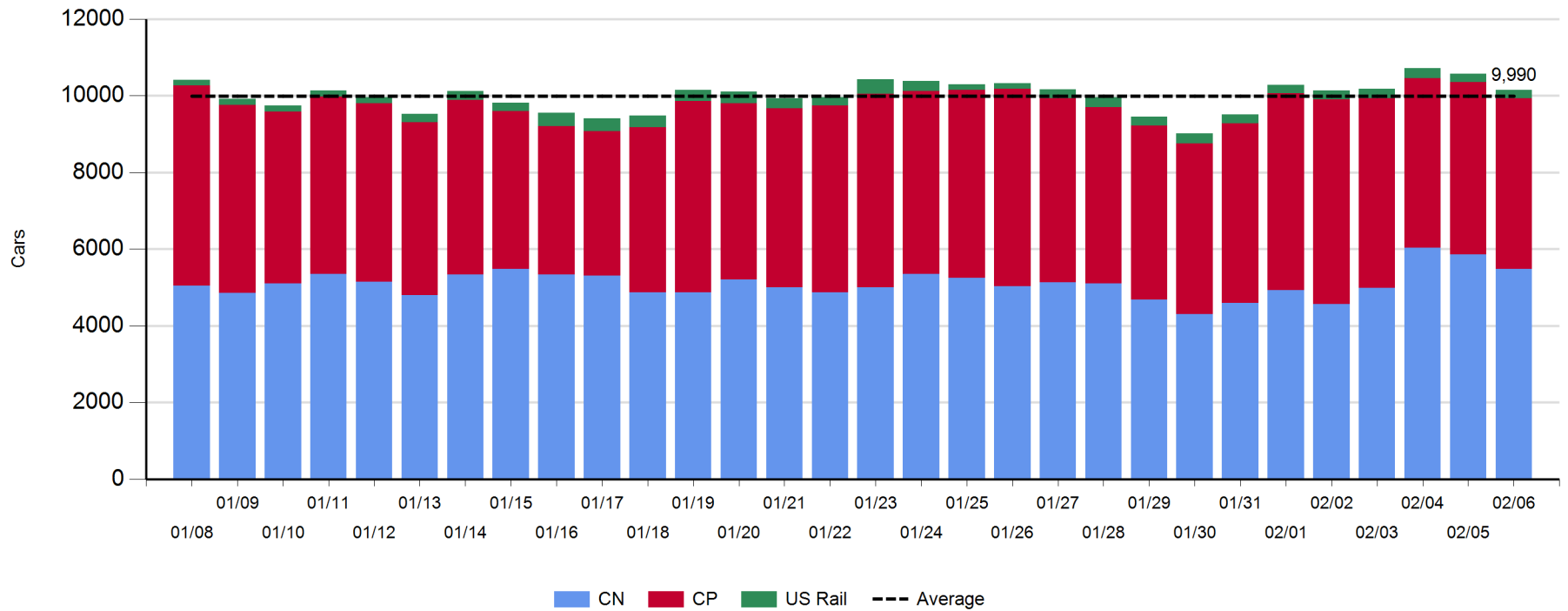
Daily Loads on Wheels - 2/6/2019

	E Canada	Prince Rupert	Thunder Bay	USA/MEX	Vancouver	Total
CN	750	1,718		177	2,839	5,484
CP	555		5	318	3,561	4,439
Short Line	31				42	73
US Rail				146		146
	1,336	1,718	5	641	6,442	10,142

Change in Loads on Wheels - Prior 24 Hours

	E Canada	Prince Rupert	Thunder Bay	USA/MEX	Vancouver	Total
CN	-20	25		-32	-349	-376
CP	-45		0	-10	5	-50
Short Line	7				-6	1
US Rail				-6		-6
	-58	25	0	-48	-350	-431

Loads on Wheels - Prior 30 Days

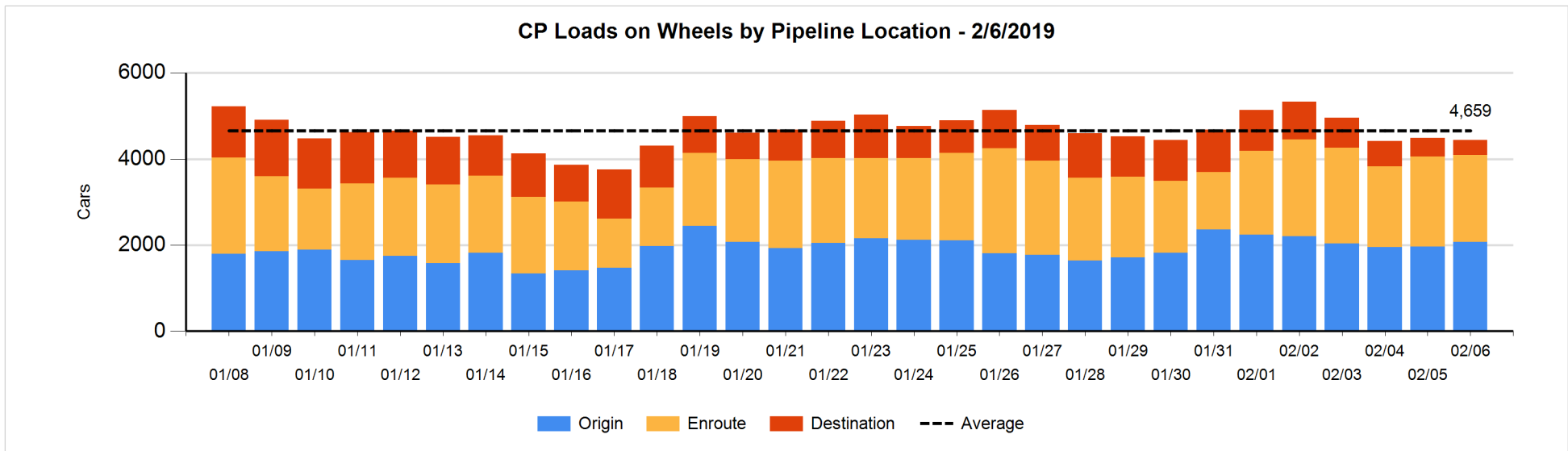
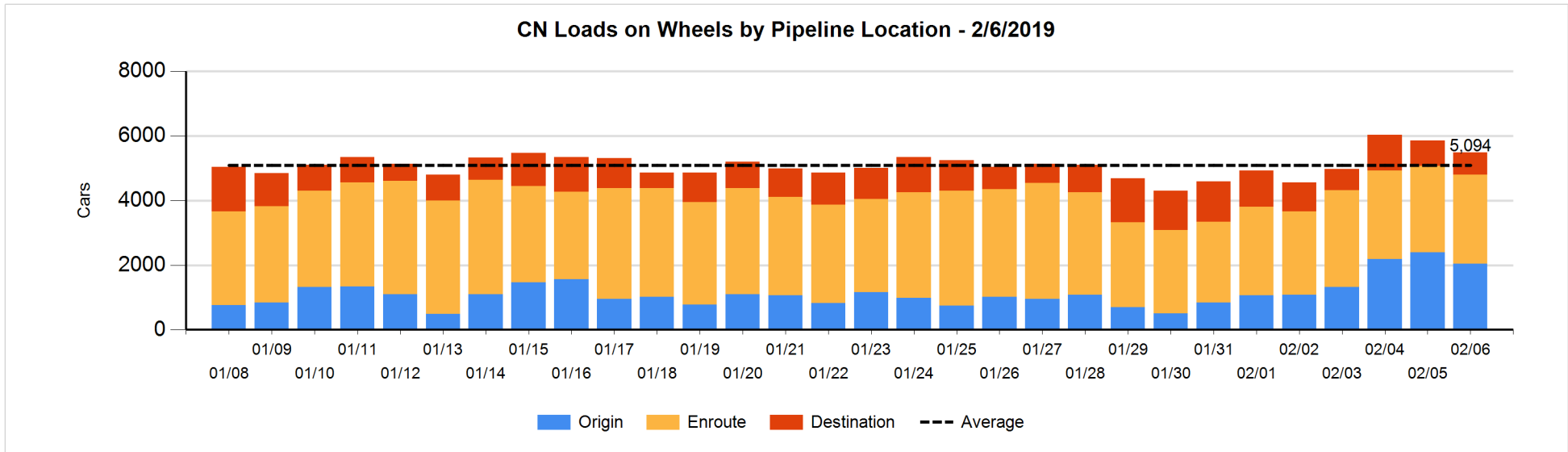


Daily Loads on Wheels By Pipeline Location - 2/6/2019

	E Canada	Prince Rupert	Thunder Bay	USA/MEX	Vancouver	Total
CN						
Origin	142	834		40	1,020	2,036
Enroute	487	822		123	1,323	2,755
Destination	121	62		14	496	693
	750	1,718		177	2,839	5,484
CP						
Origin	219			5	1,845	2,069
Enroute	336			227	1,455	2,018
Destination			5	86	261	352
	555		5	318	3,561	4,439
US Rail / Short Line						
Origin						
Enroute				82		82
Destination	31			64	42	137
	31			146	42	219

Change in Daily Loads on Wheels By Pipeline Location - Prior 24 Hours

	E Canada	Prince Rupert	Thunder Bay	USA/MEX	Vancouver	Total
CN						
Origin	40	36		4	-431	-351
Enroute	-29	-10		-35	138	64
Destination	-31	-1		-1	-56	-89
	-20	25		-32	-349	-376
CP						
Origin	-52			-2	162	108
Enroute	7			22	-103	-74
Destination			0	-30	-54	-84
	-45		0	-10	5	-50
US Rail / Short Line						
Origin						
Enroute				14		14
Destination	7			-20	-6	-19
	7			-6	-6	-5

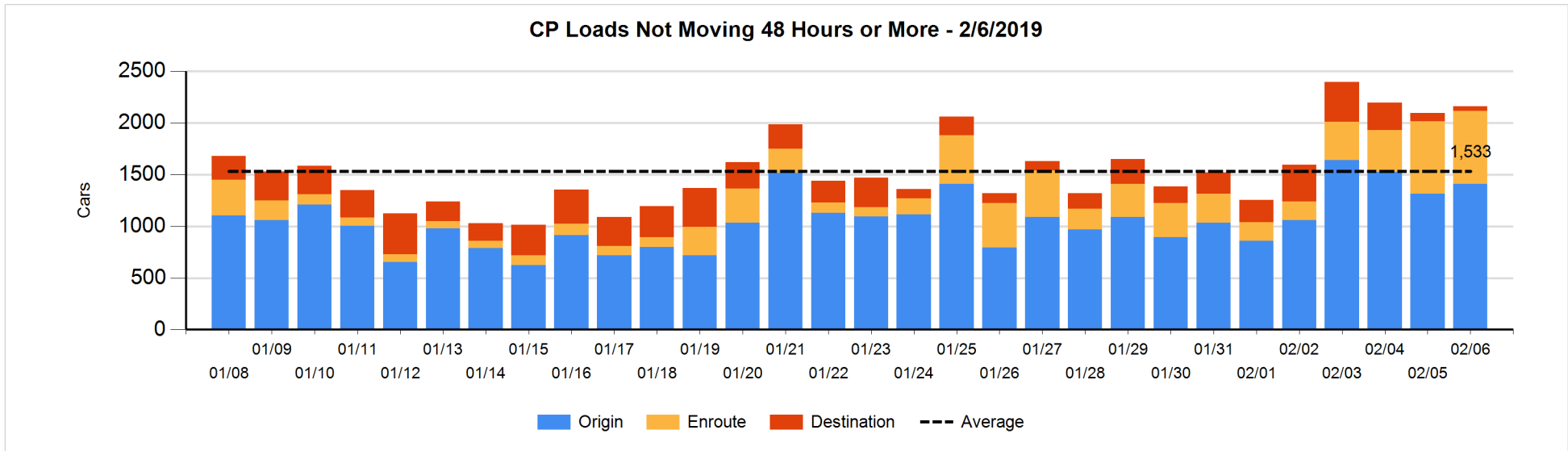
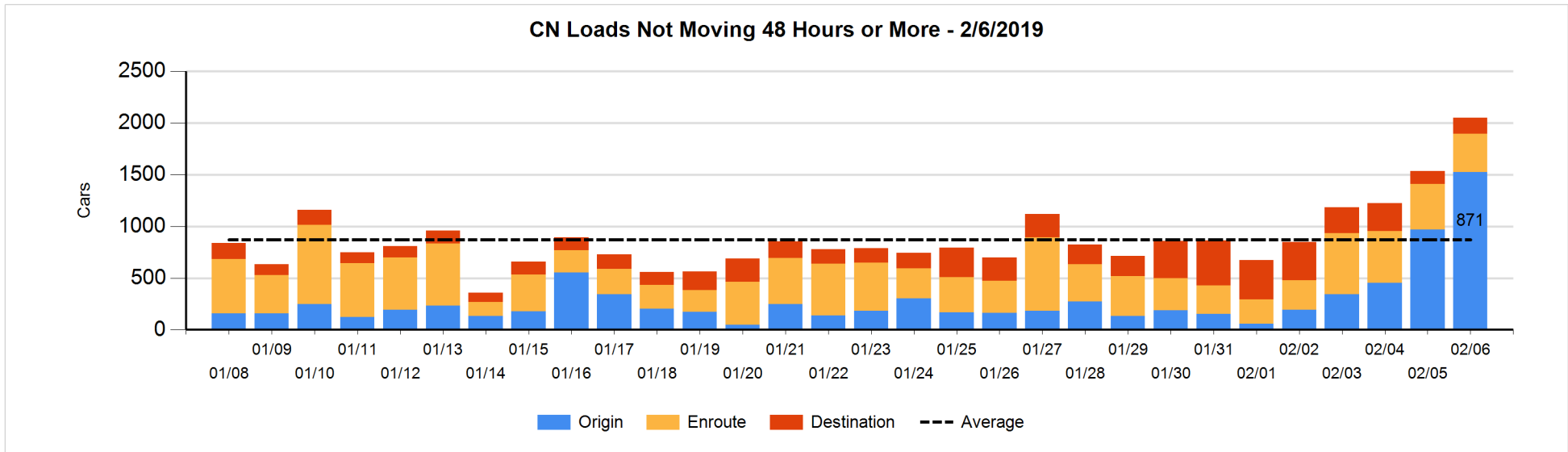


Loads Not Moving 48 Hours or More - 2/6/2019

	E Canada	Prince Rupert	Thunder Bay	USA/MEX	Vancouver	Total
CN						
Origin	102	545		18	861	1526
Enroute	69	186		15	101	371
Destination	39	12		5	97	153
	210	743		38	1059	2050
CP						
Origin	219			3	1187	1409
Enroute	9			105	591	705
Destination			5	16	24	45
	228		5	124	1802	2159
US Rail / Short Line						
Origin						
Enroute				28		28
Destination	13			25	22	60
	13			53	22	88

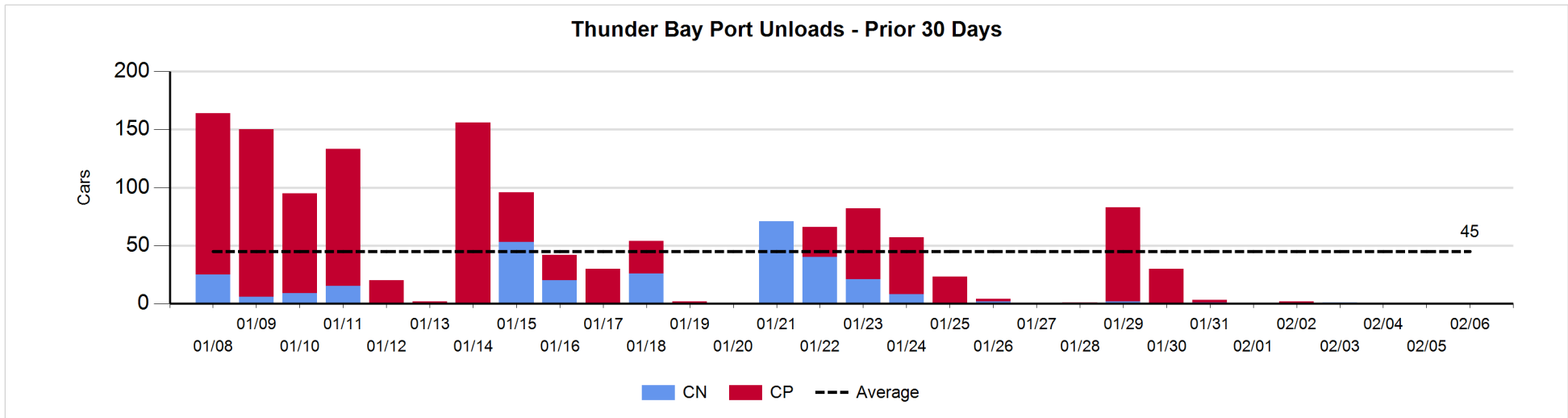
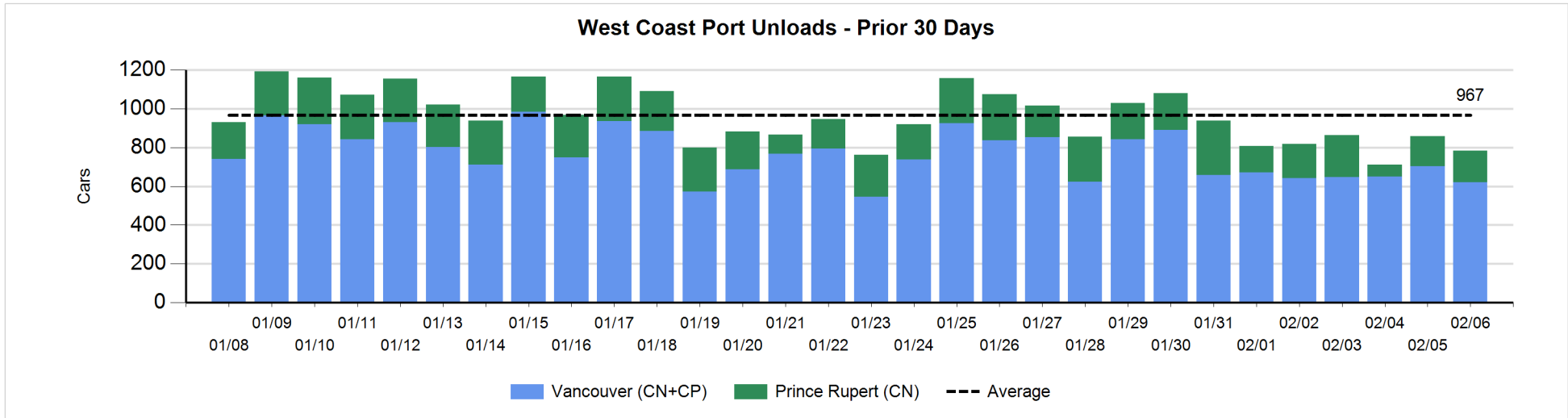
Change in Loads Not Moving 48 Hours or More - 2/6/2019

	E Canada	Prince Rupert	Thunder Bay	USA/MEX	Vancouver	Total
CN						
Origin	0	439		3	117	559
Enroute	38	-2		-3	-104	-71
Destination	26	0		-1	1	26
	64	437		-1	14	514
CP						
Origin	-52			-1	148	95
Enroute	3			-5	3	1
Destination			1	0	-32	-31
	-49		1	-6	119	65
US Rail / Short Line						
Origin						
Enroute				-2		-2
Destination	10			-3	-3	4
	10			-5	-3	2



Port Unloads - 2/6/2019

	Prince Rupert	Vancouver	West Coast Total	Thunder Bay	Total
CN	163	367	530		530
CP		254	254		254
	163	621	784		784



Port Terminal Status

Vancouver

Daily Activity for 2/6/2019

	Cars Arrived	Cars Received in Interchange	Cars Delivered in Interchange	Cars Placed for Unloading	Loads on Wheels at Destination As of 2/6/2019
CN	102	111	103	426	496
CP	318	103	113	212	261
SRY		2		17	42

Port Unloads

	02/06	02/05	Week To Date	Last Week
CN	367	433	1,016	2,108
CP	254	269	957	2,863
SRY	10	28	53	103

Age Profile of Loaded Cars Waiting Placement for Unloading

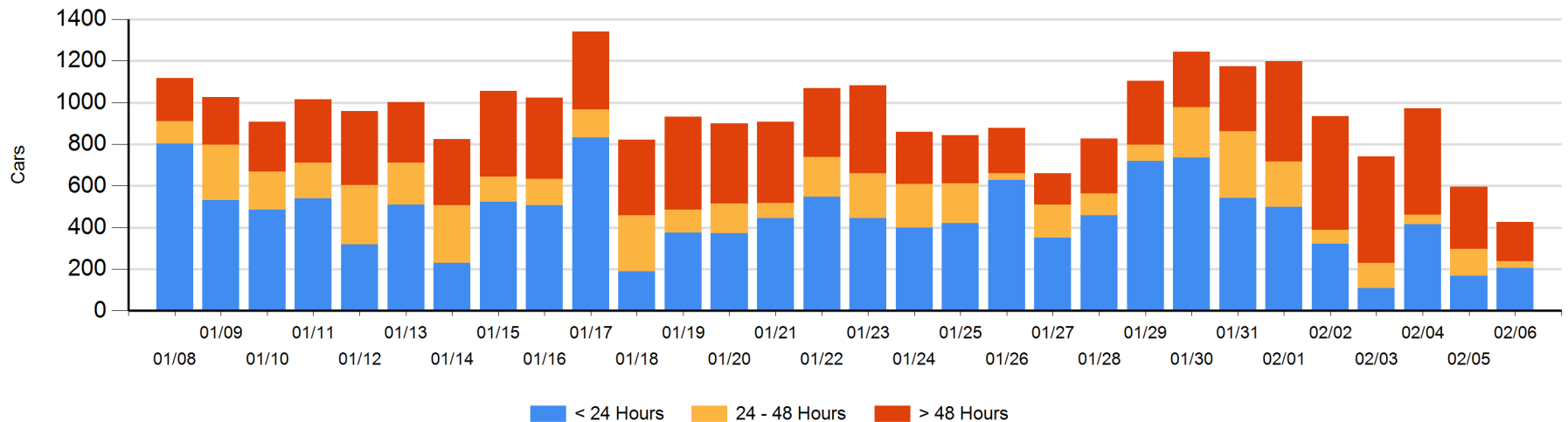
Today

	< 24 Hrs	24 - 48 Hrs	> 48-72 Hrs	> 72 Hrs	Total On Hand
CN	101	32	13	93	239
CP	105		15	68	188
SRY					0

Change in Last 24 Hours

	< 24 Hrs	24-48 Hrs	48 - 72 Hrs	> 72 Hrs
CN	-8	11	13	-36
CP	45	-108	-6	-81
SRY				

Loaded Cars on Hand Vancouver Waiting for Placement - Last 30 Days All Railways



Port Terminal Status

Prince Rupert

Daily Activity for 2/6/2019

	Cars Arrived	Cars Received in Interchange	Cars Delivered in Interchange	Cars Placed for Unloading	Loads on Wheels at Destination As of 2/6/2019
CN	162			162	62

Port Unloads

	02/06	02/05	Week To Date	Last Week
CN	163	156	381	1,420

Age Profile of Loaded Cars Waiting Placement for Unloading

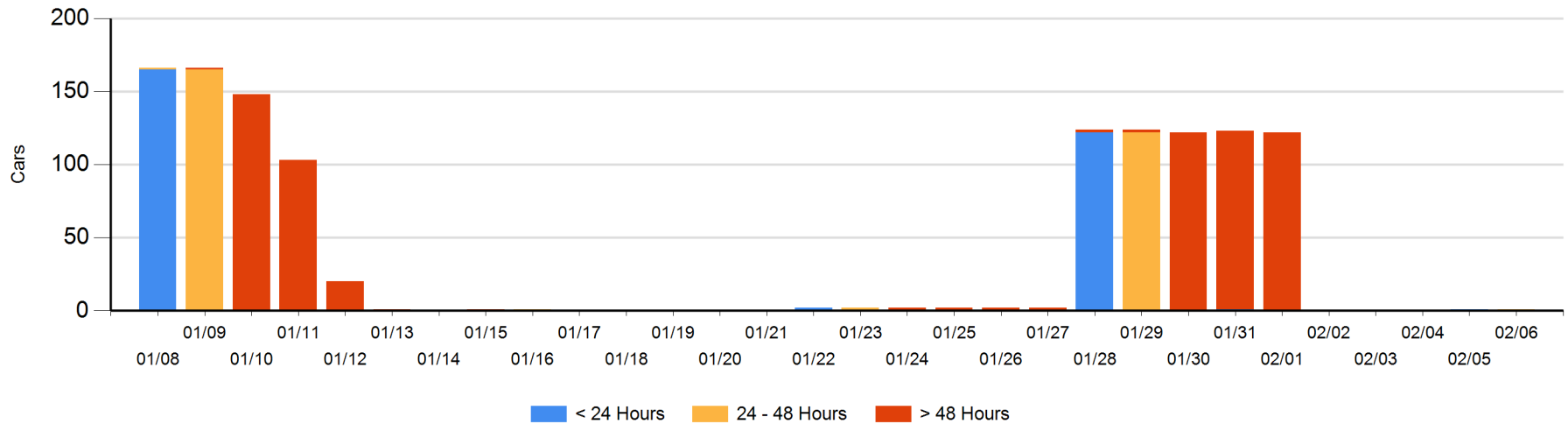
Today

	< 24 Hrs	24 - 48 Hrs	> 48-72 Hrs	> 72 Hrs	Total On Hand
CN		1			1

Change in Last 24 Hours

	< 24 Hrs	24-48 Hrs	48 - 72 Hrs	> 72 Hrs
CN	-1	1		

Loaded Cars on Hand Prince Rupert Waiting for Placement - Last 30 Days All Railways



Port Terminal Status

Thunder Bay

Daily Activity for 2/6/2019

	Cars Arrived	Cars Received in Interchange	Cars Delivered in Interchange	Cars Placed for Unloading	Loads on Wheels at Destination As of 2/6/2019
CN					
CP					5

Port Unloads

	02/06	02/05	Week To Date	Last Week
CN				4
CP				116

Age Profile of Loaded Cars Waiting Placement for Unloading

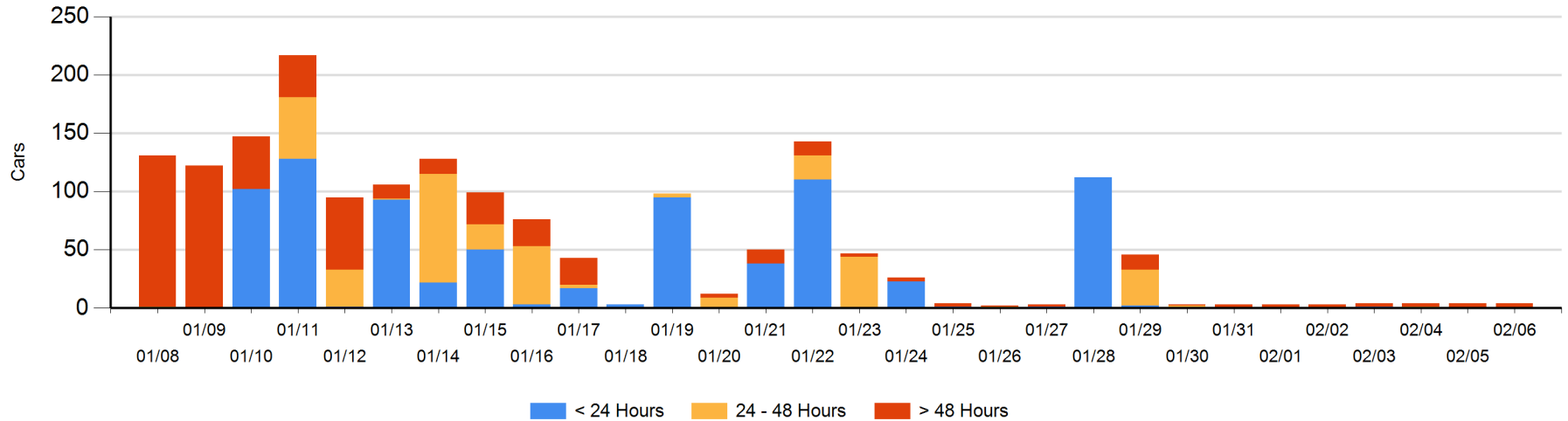
Today

	< 24 Hrs	24 - 48 Hrs	> 48-72 Hrs	> 72 Hrs	Total On Hand
CN					0
CP				4	4

Change in Last 24 Hours

	< 24 Hrs	24-48 Hrs	48 - 72 Hrs	> 72 Hrs
CN				
CP			-1	1

Loaded Cars on Hand Thunder Bay Waiting for Placement - Last 30 Days All Railways



Measurement Definitions

Loads on Wheels	<p>Count of loaded rail cars including all rail cars that have been released loaded at origin and have not been reported by the railway as unloaded at destination.</p> <p>Counts include all rail cars (hopper cars and boxcars) moving within a pipeline.</p>
Loads Not Moving	<p>Loaded rail cars for which the railways have not reported a movement event for 48 hours or more whether the rail car is at origin, enroute or at destination.</p>
Port Unloads	<p>Count of rail cars reported by railways as unloaded at the western port destinations of Vancouver, Prince Rupert and Thunder Bay.</p> <p>Unload counts include all rail cars (hopper cars and boxcars) unloaded by all receivers including major port terminals, transloaders and other receivers.</p>
Cars Arrived	<p>Count of rail cars reported as arrived at the destination railway terminal.</p>
Cars Received in Interchange	<p>Count of rail cars received in interchange by each railway within a destination railway terminal. Interchange activity is tracked for the Vancouver and Thunder Bay pipelines as applicable.</p>
Cars Delivered in Interchange	<p>Count of rail cars delivered in interchange by each railway within a destination railway terminal. Interchange activity is tracked for the Vancouver and Thunder Bay pipelines as applicable.</p>
Cars Placed for Unloading	<p>Count of rail cars reported by the railways as placed loaded at the receiver's facility for unloading.</p>
Loads on Wheels at Destination	<p>Count of rail cars that remain under load within the destination railway terminal including rail cars that have been reported as placed for unloading but not yet reported as unloaded.</p>
Waiting Placement for Unloading	<p>Count of rail cars that have been reported as arrived at the destination railway terminal but not reported as placed for unloading by the railway.</p> <p>For the Ports of Vancouver, Prince Rupert and Thunder Bay the count of rail cars waiting placement for unloading is categorized by age – i.e. the elapsed time from arrival at destination to the current report date.</p>