

SPEED READ

- Loads on wheels increased slightly overnight, marking an increase in both CN and CP volumes. On a net basis, volumes gained due to higher traffic in the Vancouver and USA/MEX corridors offset by reduced volumes in the Prince Rupert and E. Canada corridors.
- Network fluidity deteriorated overnight, led by an increase in idle car counts on both CN and CP by 2% (+50) and 2% (+36), respectively. The total count of cars for 4+ days on both railways increased 12% (+345) overnight - presently at 3,283 cars.
- One day in Week 29 unloads now behind prior week's performance by more than 100 unloads, marking reduced unloads at Vancouver offset by improved week over week performance at Prince Rupert.

Loads on Wheels

- Loads on wheels increased marginally by 1% (+153) overnight, due to higher volumes on both CN and CP - combined total at 10,507 and 5% above the trailing 30-day average.
- On a net basis, the increase in loads on wheels indicates higher volumes in the Vancouver and USA/MEX corridors offset by reduced volumes in the Prince Rupert and E. Canada corridors.
- CN volumes rose 2% (+84) overnight, with higher volumes in the Vancouver and E. Canada corridors offset by lower volumes in the Prince Rupert and USA/MEX corridors. System wide CN loads on wheels now at 5,488 and 7% above the trailing 30-day average.
- CP volumes increased for the third consecutive day, up 1% (+63) overnight, driven by an increase in volumes in the USA/MEX and Vancouver corridors offset by a decline in traffic in the E. Canada corridor. CP system wide loads on wheels currently at 4,803 and 3% above the trailing 30-day average.
- Vancouver presently at 7,051, the highest seen in the last 30 days, gained 5% (+351) overnight and have now increased for the fourth consecutive day, now 10% above the trailing 30-day average.
- The Prince Rupert pipeline presently at 1,405, declined significantly by 13% (-218) overnight, and 8% below the trailing 30 day-average.
- Thunder Bay volumes remained unchanged (0) overnight - currently at 6 and 96% below the trailing 30-day average, with 67% of traffic moving on CP.

Hopper Car Rationing

- No hopper car rationing was reported for either CN or CP in week 27.

Loads Not Moving

- **The count of cars not moving for 48+ hours increased 2% (+86) overnight, reflecting higher counts on both CN and CP. Idle car counts presently at 4,770 and 71% above the trailing 30-day average.**
- CN
 - **The count of idle cars for 48+ hours increased for the third consecutive day, up 2% (+50) overnight - now at 2,382 cars, the highest seen in the last 30 days.**
 - The number of cars idle for 4+ days rose 20% (+242) overnight - now at 1,475 cars, the highest seen in the last 30 days.
 - The count of cars not moving for 7+ days increased for the third consecutive day, up 97% (+388) overnight - currently at 788 cars, the highest seen in the last 30 days.
 - Vancouver represents 50% of all idle cars.
 - In total 66% of all idle cars are dwelling at origin locations.
- CP
 - **CP idle car counts for 48+ hours gained 2% (+36) overnight - presently at 2,388 cars.**

- The number of cars idle for 4+ days rose 6% (+103) overnight - now at 1,808 cars.
- The number of cars idle for 7+ days declined 6% (-62) overnight - currently at 928 cars.
- Vancouver accounts for 86% of all idle cars.
- In total 81% of all idle cars are dwelling at origin locations.

Port Performance

- CN and CP reported a total of 601 cars unloaded at the three major ports, the lowest seen in the last 30 days, now 35% below the trailing 30 day-average. One day in Week 29 unloads now behind last week's pace by more than 100 unloads, marking reduced unloads at Vancouver offset by higher unloads at Prince Rupert.
- Vancouver
 - 340 unloads, the lowest seen in the last 30 days, was reported by CN and CP at the Port of Vancouver; CN - 259 and CP - 81. One day in Week 29 unloads are tracking behind last week's performance by more than 300 unloads.
 - There are around 500 cars on site at Vancouver with 400 cars arriving at the port in the last 24 hours.
 - CN and CP have 850 cars in British Columbia en route to Vancouver, with 150 cars at Kamloops and west, and 79% of traffic moving on CP.
- Prince Rupert
 - Prince Rupert reported 261 unloads, now ahead of last week's unloads after one day by 200 unloads.
 - Loads on wheels now above 1,000 cars - presently at 1,405 cars.
 - There are more than 400 cars west of Jasper en route to Prince Rupert.
 - There are more than 100 cars on site at Prince Rupert with 100 cars arriving at the port in the last 24 hours.
- Thunder Bay
 - Zero unloads were reported at Thunder Bay yesterday. One day in Week 29 unloads are tracking behind last week's pace by zero unloads.
 - There are 5 cars on site at Thunder Bay with 0 cars arriving at the port in the prior 24 hours.
 - There are 1 car en route to Thunder Bay from Winnipeg and east.

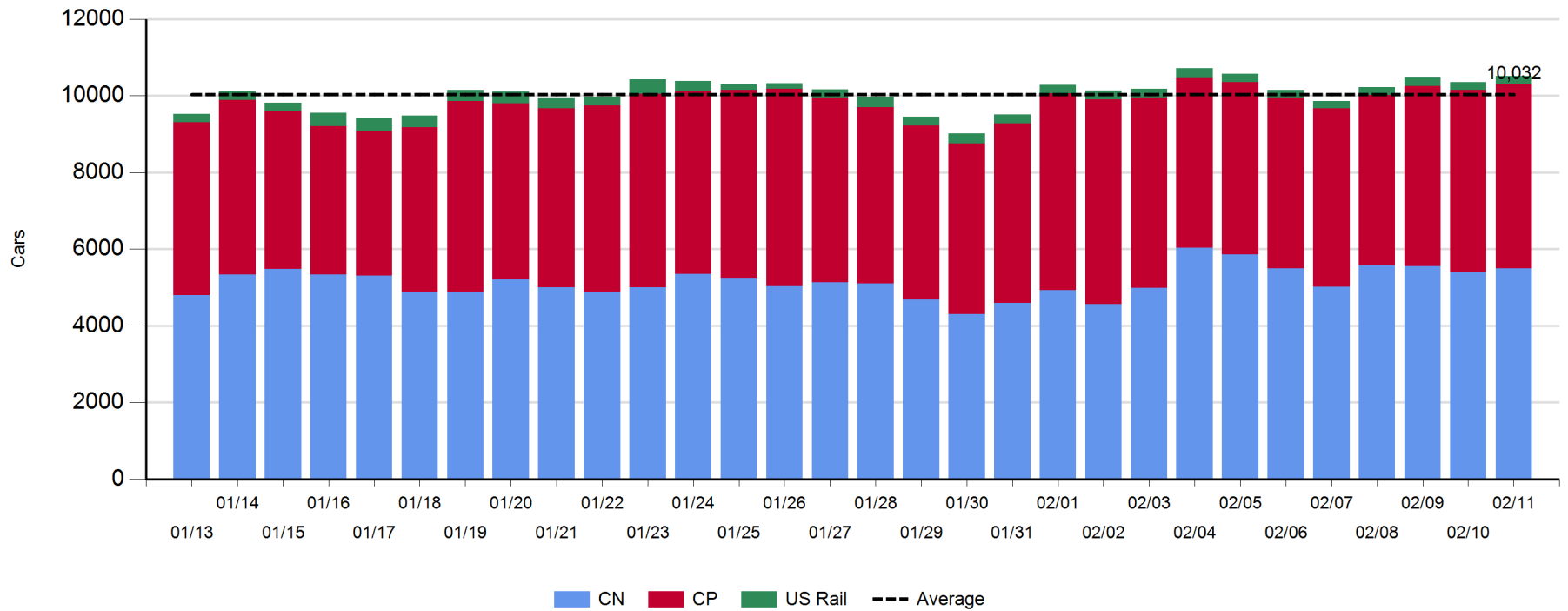
Daily Loads on Wheels - 2/11/2019

	E Canada	Prince Rupert	Thunder Bay	USA/MEX	Vancouver	Total
CN	826	1,405	2	126	3,129	5,488
CP	613		4	312	3,874	4,803
Short Line	57				48	105
US Rail				111		111
	1,496	1,405	6	549	7,051	10,507

Change in Loads on Wheels - Prior 24 Hours

	E Canada	Prince Rupert	Thunder Bay	USA/MEX	Vancouver	Total
CN	18	-218	0	-26	310	84
CP	-95		0	127	31	63
Short Line	15				10	25
US Rail				-19		-19
	-62	-218	0	82	351	153

Loads on Wheels - Prior 30 Days

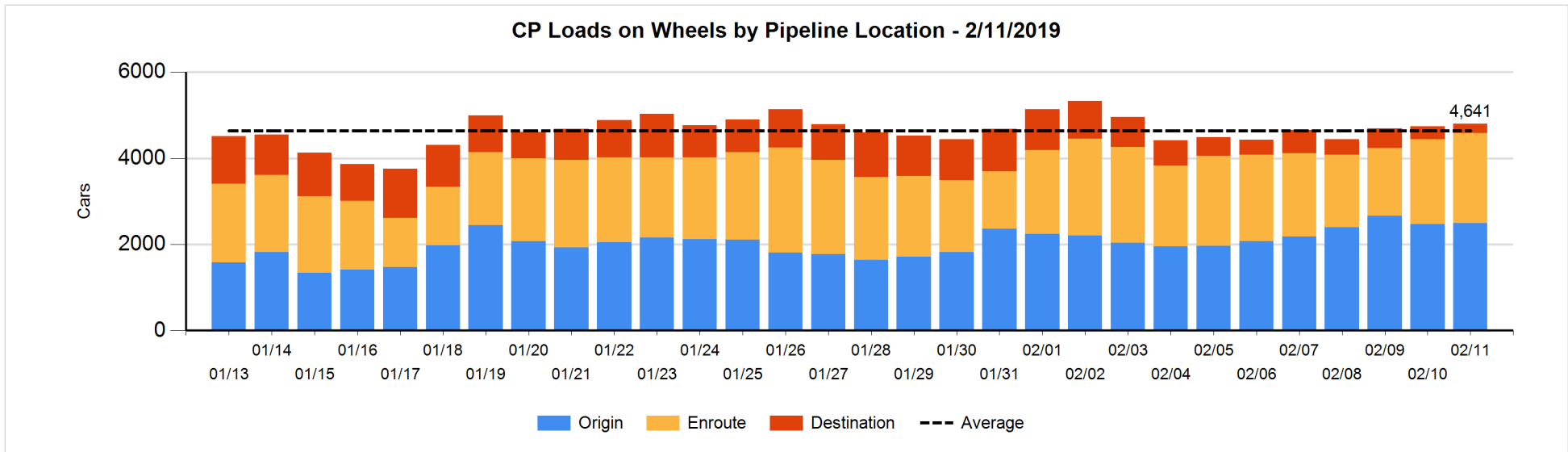
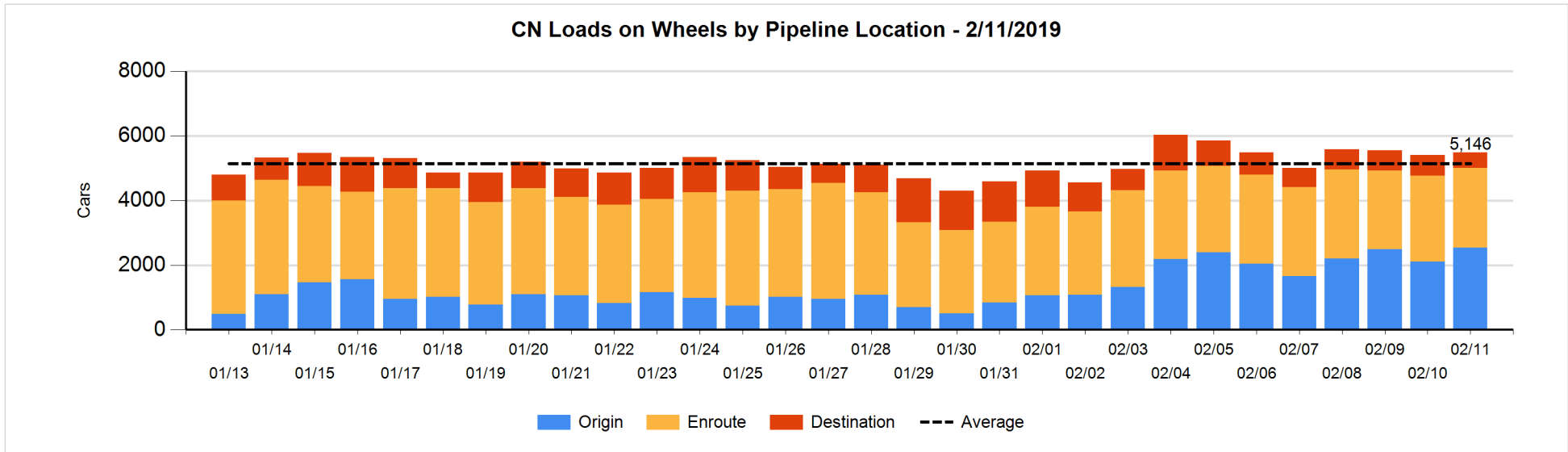


Daily Loads on Wheels By Pipeline Location - 2/11/2019

	E Canada	Prince Rupert	Thunder Bay	USA/MEX	Vancouver	Total
CN						
Origin	167	572		64	1,743	2,546
Enroute	583	722	1	48	1,113	2,467
Destination	76	111	1	14	273	475
	826	1,405	2	126	3,129	5,488
CP						
Origin	188			134	2,168	2,490
Enroute	386			157	1,547	2,090
Destination	39		4	21	159	223
	613		4	312	3,874	4,803
US Rail / Short Line						
Origin						
Enroute				66		66
Destination	57			45	48	150
	57			111	48	216

Change in Daily Loads on Wheels By Pipeline Location - Prior 24 Hours

	E Canada	Prince Rupert	Thunder Bay	USA/MEX	Vancouver	Total
CN						
Origin	-80	43		4	475	442
Enroute	96	-110	0	-2	-177	-193
Destination	2	-151	0	-28	12	-165
	18	-218	0	-26	310	84
CP						
Origin	-92			127	-19	16
Enroute	94			-4	29	119
Destination	-97		0	4	21	-72
	-95		0	127	31	63
US Rail / Short Line						
Origin						
Enroute				-8		-8
Destination	15			-11	10	14
	15			-19	10	6

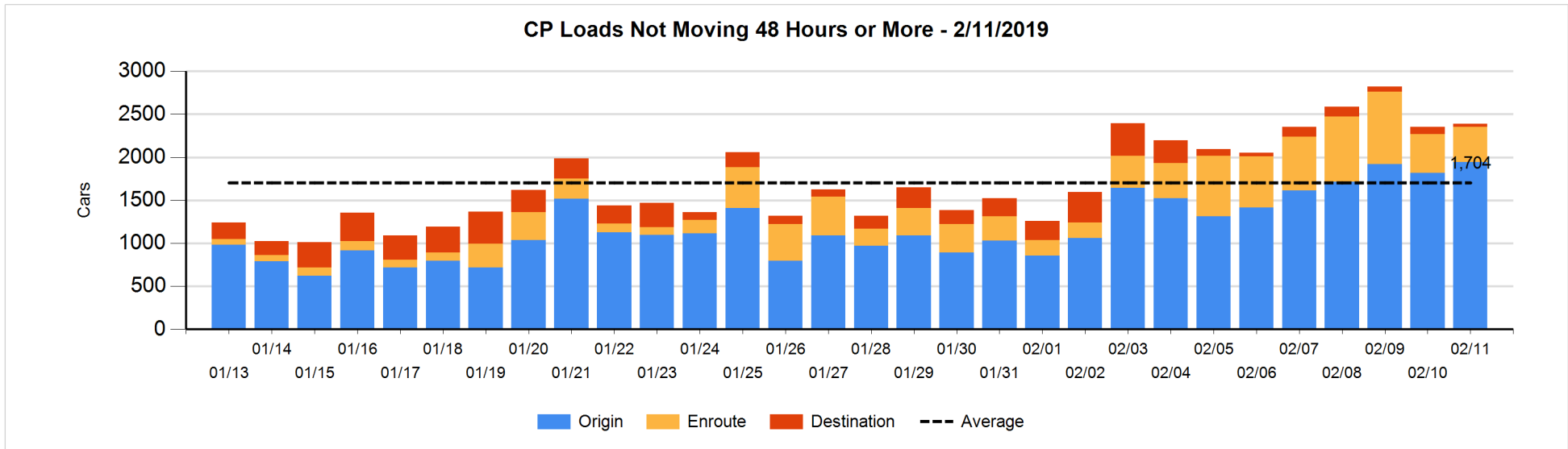
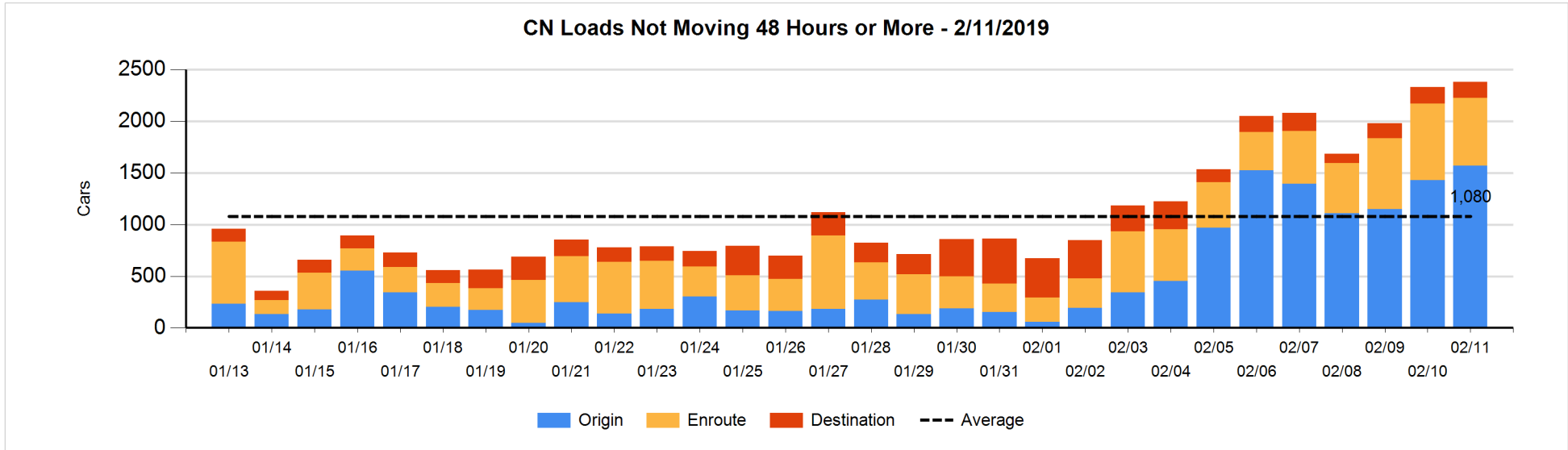


Loads Not Moving 48 Hours or More - 2/11/2019

	E Canada	Prince Rupert	Thunder Bay	USA/MEX	Vancouver	Total
CN						
Origin	151	460		50	907	1568
Enroute	241	201		25	193	660
Destination	40	12	1	7	94	154
	432	673	1	82	1194	2382
CP						
Origin	168			7	1770	1945
Enroute	34			110	264	408
Destination			4	14	17	35
	202		4	131	2051	2388
US Rail / Short Line						
Origin						
Enroute				20		20
Destination	28			28	27	83
	28			48	27	103

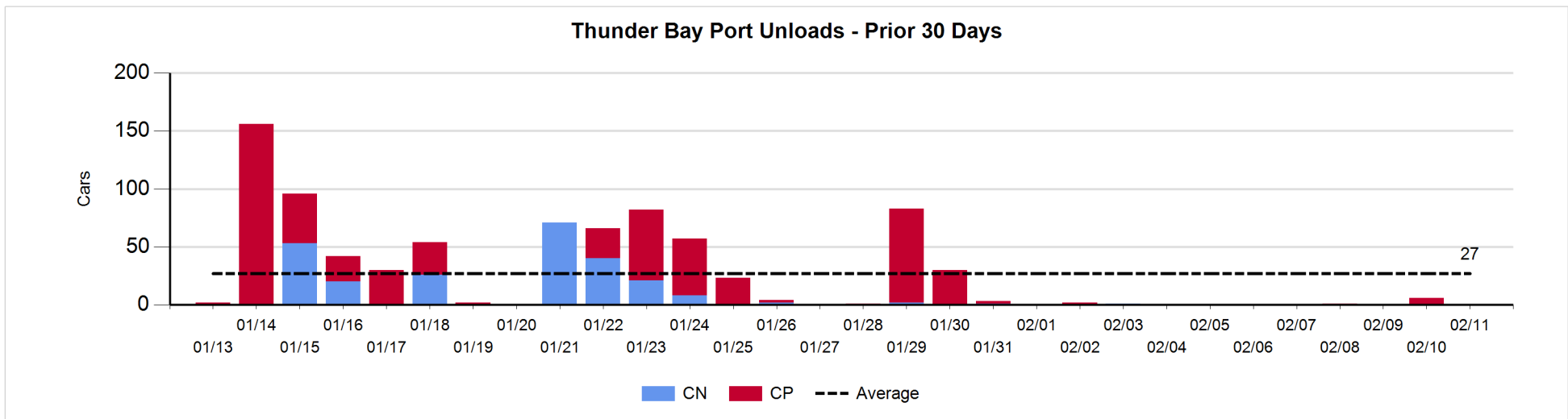
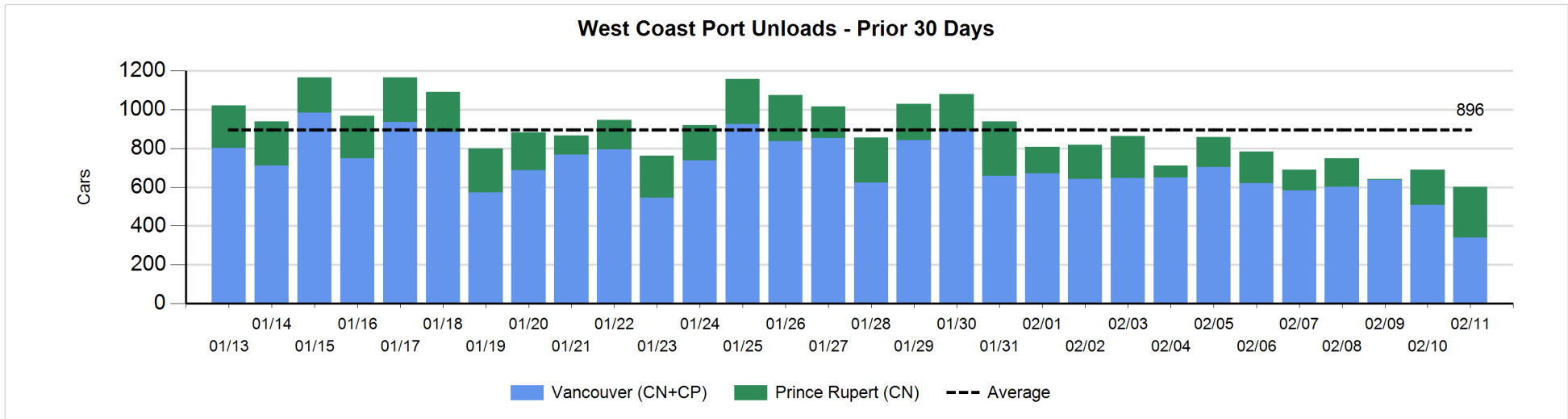
Change in Loads Not Moving 48 Hours or More - 2/11/2019

	E Canada	Prince Rupert	Thunder Bay	USA/MEX	Vancouver	Total
CN						
Origin	-25	42		-3	124	138
Enroute	0	1		-5	-75	-79
Destination	-31	-1	1	-18	40	-9
	-56	42	1	-26	89	50
CP						
Origin	-112			0	241	129
Enroute	-3			0	-44	-47
Destination	-2		0	-2	-42	-46
	-117		0	-2	155	36
US Rail / Short Line						
Origin						
Enroute				-2		-2
Destination	-14			-4	8	-10
	-14			-6	8	-12



Port Unloads - 2/11/2019

	Prince Rupert	Vancouver	West Coast Total	Thunder Bay	Total
CN	261	259	520		520
CP		81	81		81
	261	340	601		601



Port Terminal Status

Vancouver

Daily Activity for 2/11/2019

	Cars Arrived	Cars Received in Interchange	Cars Delivered in Interchange	Cars Placed for Unloading	Loads on Wheels at Destination As of 2/11/2019
CN	306		27	303	273
CP	84	27		46	159
SRY				1	48

Port Unloads

	02/11	02/10	Week To Date	Last Week
CN	259	104	259	2,057
CP	81	403	81	2,243
SRY	7		7	79

Age Profile of Loaded Cars Waiting Placement for Unloading

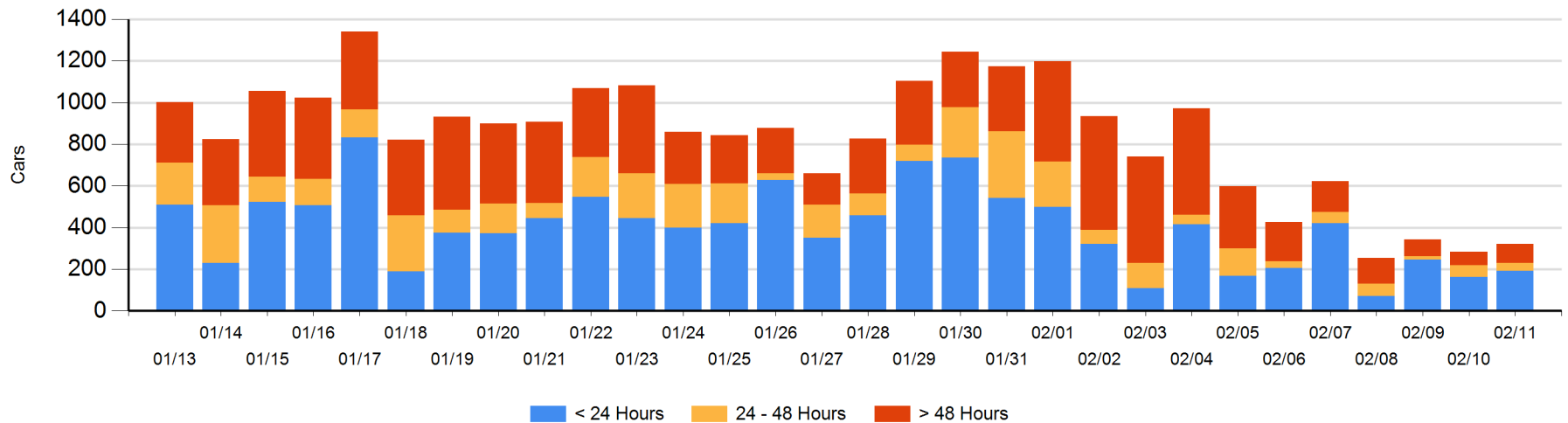
Today

	< 24 Hrs	24 - 48 Hrs	> 48-72 Hrs	> 72 Hrs	Total On Hand
CN	107	40	23	21	191
CP	84		6	40	130
SRY					0

Change in Last 24 Hours

	< 24 Hrs	24-48 Hrs	48 - 72 Hrs	> 72 Hrs
CN	-26	15	23	-3
CP	55	-32	-6	11
SRY				

Loaded Cars on Hand Vancouver Waiting for Placement - Last 30 Days All Railways



Port Terminal Status

Prince Rupert

Daily Activity for 2/11/2019

	Cars Arrived	Cars Received in Interchange	Cars Delivered in Interchange	Cars Placed for Unloading	Loads on Wheels at Destination As of 2/11/2019
CN	110			110	111

Port Unloads

	02/11	02/10	Week To Date	Last Week
CN	261	183	261	825

Age Profile of Loaded Cars Waiting Placement for Unloading

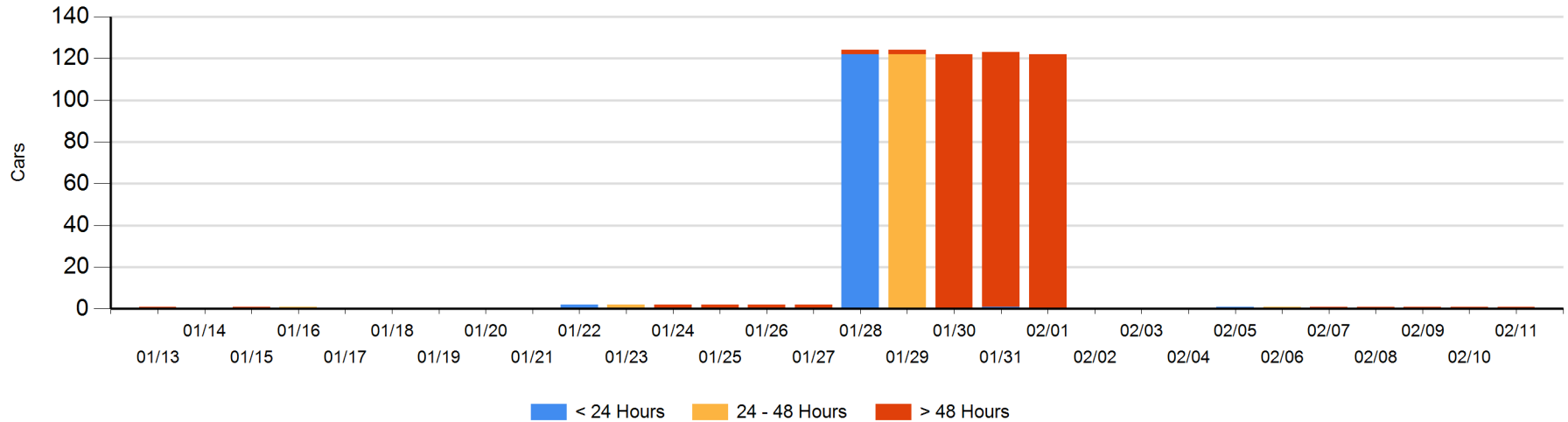
Today

	< 24 Hrs	24 - 48 Hrs	> 48-72 Hrs	> 72 Hrs	Total On Hand
CN				1	1

Change in Last 24 Hours

	< 24 Hrs	24-48 Hrs	48 - 72 Hrs	> 72 Hrs
CN				0

Loaded Cars on Hand Prince Rupert Waiting for Placement - Last 30 Days All Railways



Port Terminal Status

Thunder Bay

Daily Activity for 2/11/2019

	Cars Arrived	Cars Received in Interchange	Cars Delivered in Interchange	Cars Placed for Unloading	Loads on Wheels at Destination As of 2/11/2019
CN					1
CP					4

Port Unloads

	02/11	02/10	Week To Date	Last Week
CN				
CP		6		7

Age Profile of Loaded Cars Waiting Placement for Unloading

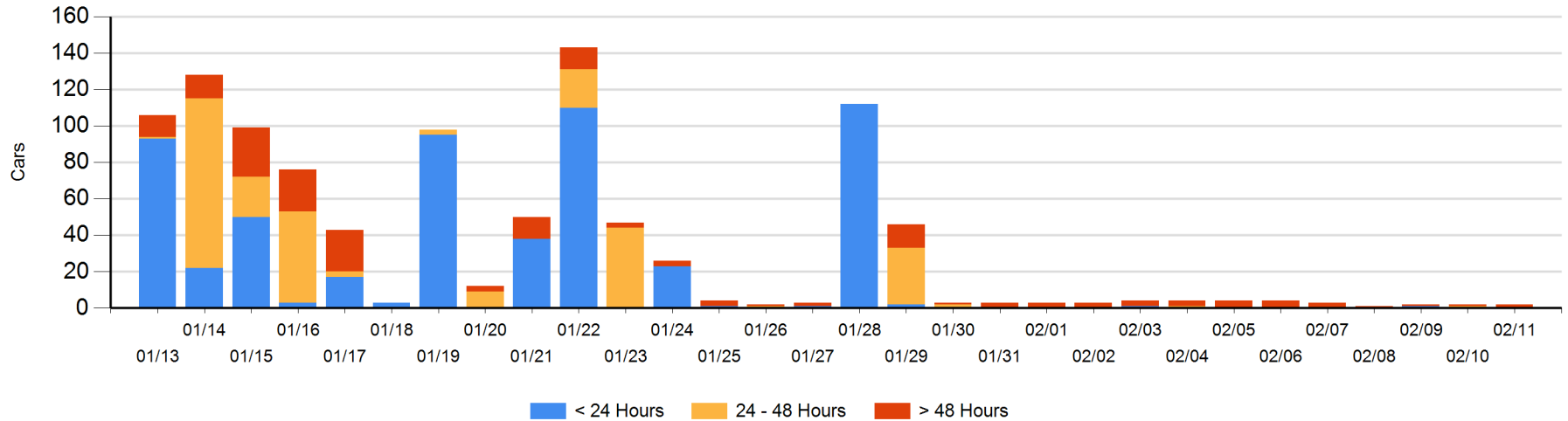
Today

	< 24 Hrs	24 - 48 Hrs	> 48-72 Hrs	> 72 Hrs	Total On Hand
CN			1		1
CP				1	1

Change in Last 24 Hours

	< 24 Hrs	24-48 Hrs	48 - 72 Hrs	> 72 Hrs
CN		-1	1	
CP				0

Loaded Cars on Hand Thunder Bay Waiting for Placement - Last 30 Days All Railways



Measurement Definitions

Loads on Wheels	<p>Count of loaded rail cars including all rail cars that have been released loaded at origin and have not been reported by the railway as unloaded at destination.</p> <p>Counts include all rail cars (hopper cars and boxcars) moving within a pipeline.</p>
Loads Not Moving	<p>Loaded rail cars for which the railways have not reported a movement event for 48 hours or more whether the rail car is at origin, enroute or at destination.</p>
Port Unloads	<p>Count of rail cars reported by railways as unloaded at the western port destinations of Vancouver, Prince Rupert and Thunder Bay.</p> <p>Unload counts include all rail cars (hopper cars and boxcars) unloaded by all receivers including major port terminals, transloaders and other receivers.</p>
Cars Arrived	<p>Count of rail cars reported as arrived at the destination railway terminal.</p>
Cars Received in Interchange	<p>Count of rail cars received in interchange by each railway within a destination railway terminal. Interchange activity is tracked for the Vancouver and Thunder Bay pipelines as applicable.</p>
Cars Delivered in Interchange	<p>Count of rail cars delivered in interchange by each railway within a destination railway terminal. Interchange activity is tracked for the Vancouver and Thunder Bay pipelines as applicable.</p>
Cars Placed for Unloading	<p>Count of rail cars reported by the railways as placed loaded at the receiver's facility for unloading.</p>
Loads on Wheels at Destination	<p>Count of rail cars that remain under load within the destination railway terminal including rail cars that have been reported as placed for unloading but not yet reported as unloaded.</p>
Waiting Placement for Unloading	<p>Count of rail cars that have been reported as arrived at the destination railway terminal but not reported as placed for unloading by the railway.</p> <p>For the Ports of Vancouver, Prince Rupert and Thunder Bay the count of rail cars waiting placement for unloading is categorized by age – i.e. the elapsed time from arrival at destination to the current report date.</p>