

## SPEED READ

- Loads on wheels decreased overnight, reflecting a decline in both CN and CP volumes. On a net basis, volumes decreased due to reduced traffic in the Vancouver, Prince Rupert and Thunder Bay corridors offset by higher volumes in the USA/MEX and E. Canada corridors.
- Network fluidity improved overnight, led by a decline in idle car counts on both CN and CP by 21% (-441) and 19% (-328), respectively. The total count of cars for 4+ days on both railways increased 15% (+295) overnight - now at 2,267 cars.
- One day in Week 30 unloads now ahead of prior week's performance by fewer than 350 unloads, marking improved week over week performance at Vancouver and Thunder Bay offset by reduced unloads at Prince Rupert.

---

## Loads on Wheels

- Loads on wheels decreased 3% (-371) overnight and have now decreased for the third consecutive day, due to reduced traffic on both CN and CP - combined total at 10,498 and 1% above the trailing 30-day average.
- On a net basis, the decline in loads on wheels reflects lower traffic in the Vancouver, Prince Rupert and Thunder Bay corridors offset by higher volumes in the USA/MEX and E. Canada corridors.
- CN volumes fell 5% (-280) overnight, with lower volumes across all corridors - Vancouver, Prince Rupert, USA/MEX and E. Canada. System wide CN loads on wheels now at 5,857 and 9% above the trailing 30-day average.
- CP volumes decreased for the fourth consecutive day, down 2% (-100) overnight, driven by a decline in volumes in the Vancouver and Thunder Bay corridors offset by an increase in volumes in the USA/MEX and E. Canada corridors. CP system wide loads on wheels presently at 4,446 and 8% below the trailing 30-day average.
- Vancouver now at 6,218, decreased 8% (-509) overnight and have now decreased for the fifth consecutive day, now 6% below the trailing 30-day average.
- The Prince Rupert pipeline presently at 1,755, decreased 3% (-49) overnight, and 8% above the trailing 30-day average.
- Thunder Bay volumes declined significantly by 43% (-30) overnight - now at 41 and 52% below the trailing 30-day average, with 95% of traffic moving on CP.

## Hopper Car Rationing

- CN rationed 561 hopper cars in week 28.

## Loads Not Moving

- **The count of cars not moving for 48+ hours decreased for the third consecutive day, down 20% (-769) overnight, reflecting reduced counts on both CN and CP. Idle car counts presently at 3,083 and 5% below the trailing 30 day-average.**
- CN
  - **The count of idle cars for 48+ hours decreased 21% (-441) overnight - currently at 1,646 cars.**
  - The number of cars idle for 4+ days increased 14% (+144) overnight - now at 1,177 cars.
  - The count of cars not moving for 7+ days increased 6% (+34) overnight - now at 632 cars.
  - Vancouver represents 26% of all idle cars.
  - In total 51% of all idle cars are dwelling at origin locations.
- CP
  - **CP idle car counts for 48+ hours decreased for the third consecutive day, down 19% (-328) overnight - presently at 1,437 cars.**
  - The number of cars idle for 4+ days increased 16% (+151) overnight - presently at 1,090 cars.

- The number of cars idle for 7+ days decreased 28% (-93) overnight and have now decreased for the third consecutive day - presently at 243 cars.
- Vancouver accounts for 68% of all idle cars.
- In total 60% of all idle cars are dwelling at origin locations.

### **Port Performance**

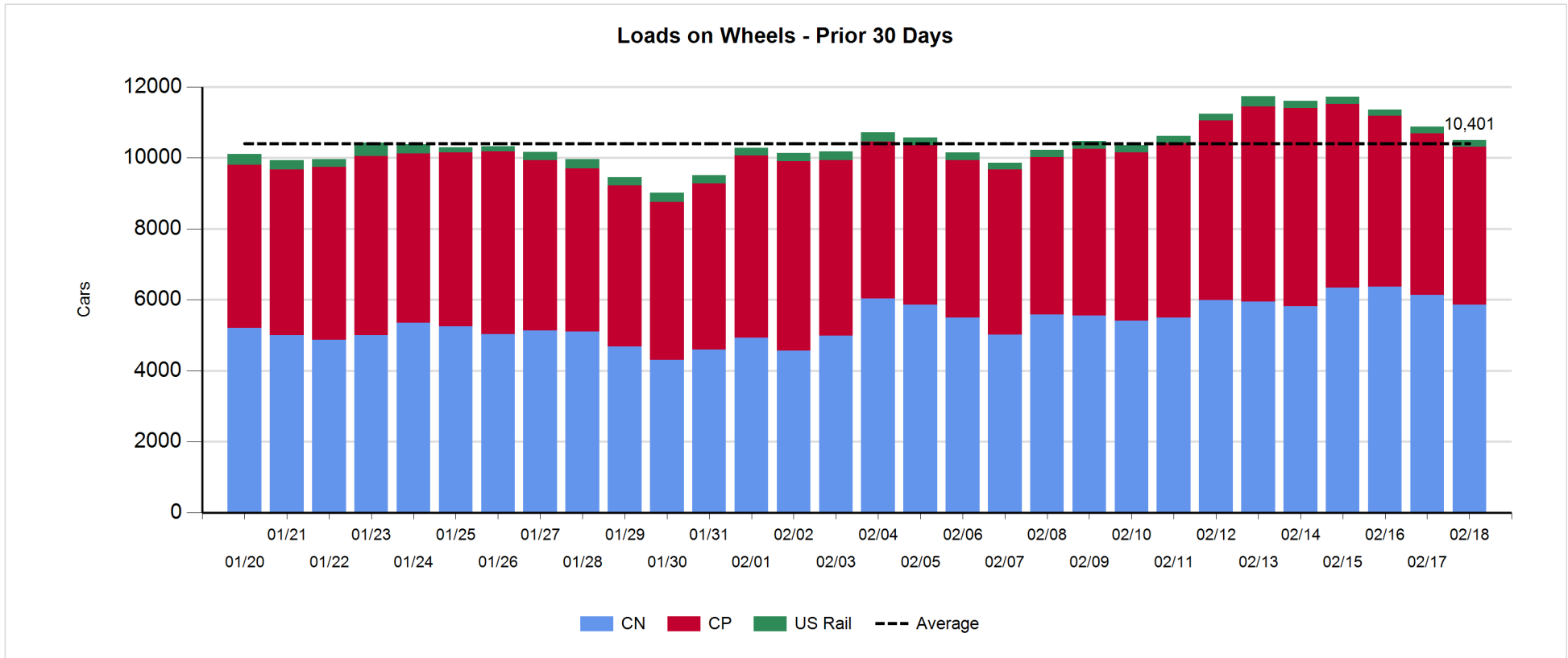
- CN and CP reported a total of 925 cars unloaded at the three major ports, now 9% above the trailing 30-day average. One day in Week 30 unloads now ahead of last week's pace by less than 350 unloads, marking higher unloads at Vancouver and Thunder Bay offset by reduced unloads at Prince Rupert.
- Vancouver
  - 823 unloads reported by CN and CP at the Port of Vancouver; CN - 419 and CP - 404. One day in Week 30 unloads are tracking ahead of last week's performance by 500 unloads.
  - There are 900 cars on site at Vancouver with 950 cars arriving at the port in the last 24 hours.
  - CN and CP have more than 1,250 cars in British Columbia en route to Vancouver, with more than 800 cars at Kamloops and west, and 56% of traffic moving on CN.
- Prince Rupert
  - Prince Rupert reported 72 unloads, now behind last week's unloads after one day by fewer than 200 unloads.
  - Loads on wheels now above 1,000 cars - presently at 1,755 cars.
  - There are 550 cars west of Jasper en route to Prince Rupert.
  - There are more than 50 cars on site at Prince Rupert with zero cars arriving at the port in the last 24 hours.
- Thunder Bay
  - 30 unloads were reported at Thunder Bay yesterday. One day in Week 30 unloads are tracking ahead of last week's pace by less than 50 unloads.
  - There are 50 cars on site at Thunder Bay with zero cars arriving at the port in the prior 24 hours.
  - There are 1 car en route to Thunder Bay from Winnipeg and east.

**Daily Loads on Wheels - 2/18/2019**

	E Canada	Prince Rupert	Thunder Bay	USA/MEX	Vancouver	Total
CN	870	1,755	2	193	3,037	5,857
CP	778		39	499	3,130	4,446
Short Line	28				51	79
US Rail				116		116
	1,676	1,755	41	808	6,218	10,498

**Change in Loads on Wheels - Prior 24 Hours**

	E Canada	Prince Rupert	Thunder Bay	USA/MEX	Vancouver	Total
CN	-27	-49	0	-1	-203	-280
CP	57		-30	170	-296	-99
Short Line	0				-10	-10
US Rail				18		18
	30	-49	-30	187	-509	-371

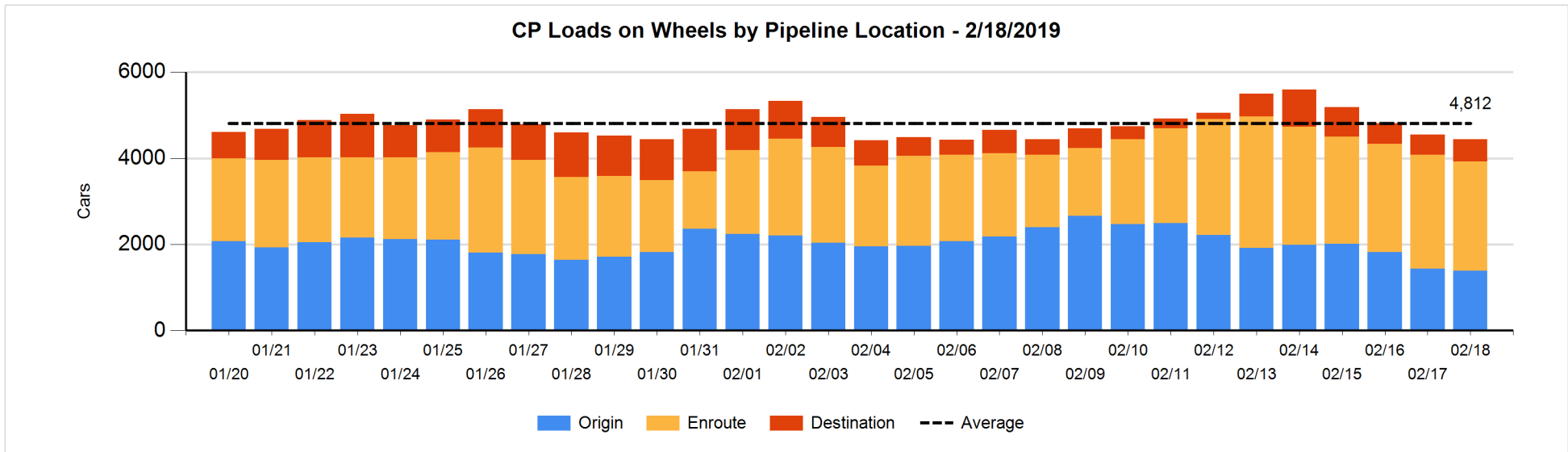
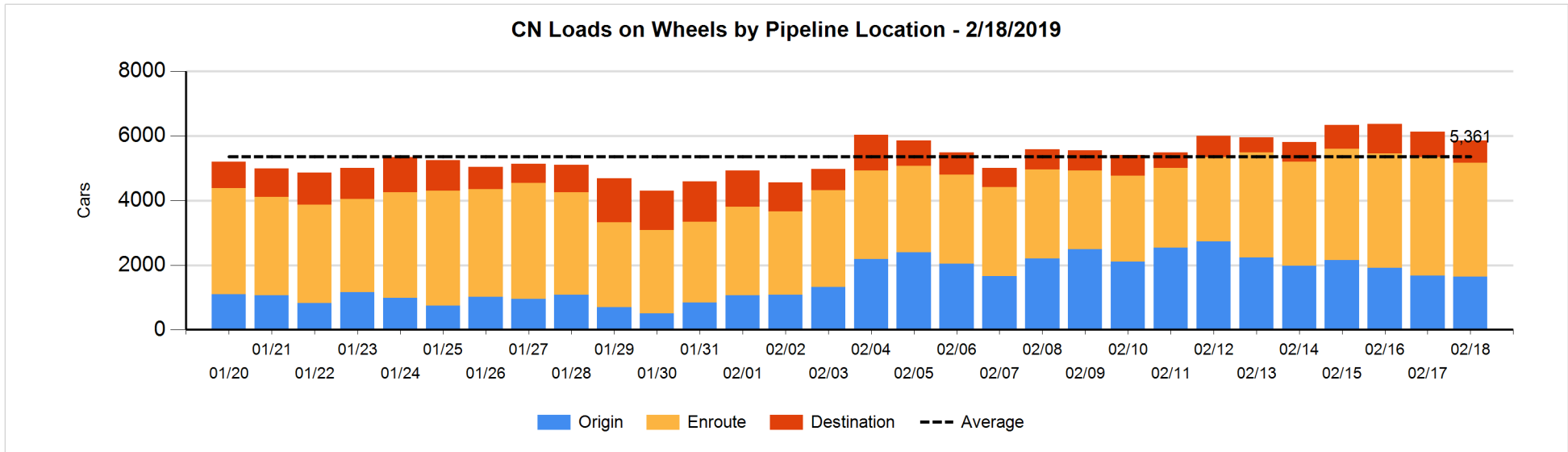


**Daily Loads on Wheels By Pipeline Location - 2/18/2019**

	E Canada	Prince Rupert	Thunder Bay	USA/MEX	Vancouver	Total
CN						
Origin	152	753		68	674	1,647
Enroute	508	925		116	1,971	3,520
Destination	210	77	2	9	392	690
	870	1,755	2	193	3,037	5,857
CP						
Origin	225			262	898	1,385
Enroute	552		1	217	1,770	2,540
Destination	1		38	20	462	521
	778		39	499	3,130	4,446
US Rail / Short Line						
Origin						
Enroute				62		62
Destination	28			54	51	133
	28			116	51	195

**Change in Daily Loads on Wheels By Pipeline Location - Prior 24 Hours**

	E Canada	Prince Rupert	Thunder Bay	USA/MEX	Vancouver	Total
CN						
Origin	-1	21		-11	-43	-34
Enroute	-1	2		14	-160	-145
Destination	-25	-72	0	-4	0	-101
	-27	-49	0	-1	-203	-280
CP						
Origin	0		-2	103	-155	-54
Enroute	104		1	71	-273	-97
Destination	-47		-30	-4	132	51
	57		-31	170	-296	-100
US Rail / Short Line						
Origin						
Enroute				19		19
Destination	0			-1	-10	-11
	0			18	-10	8

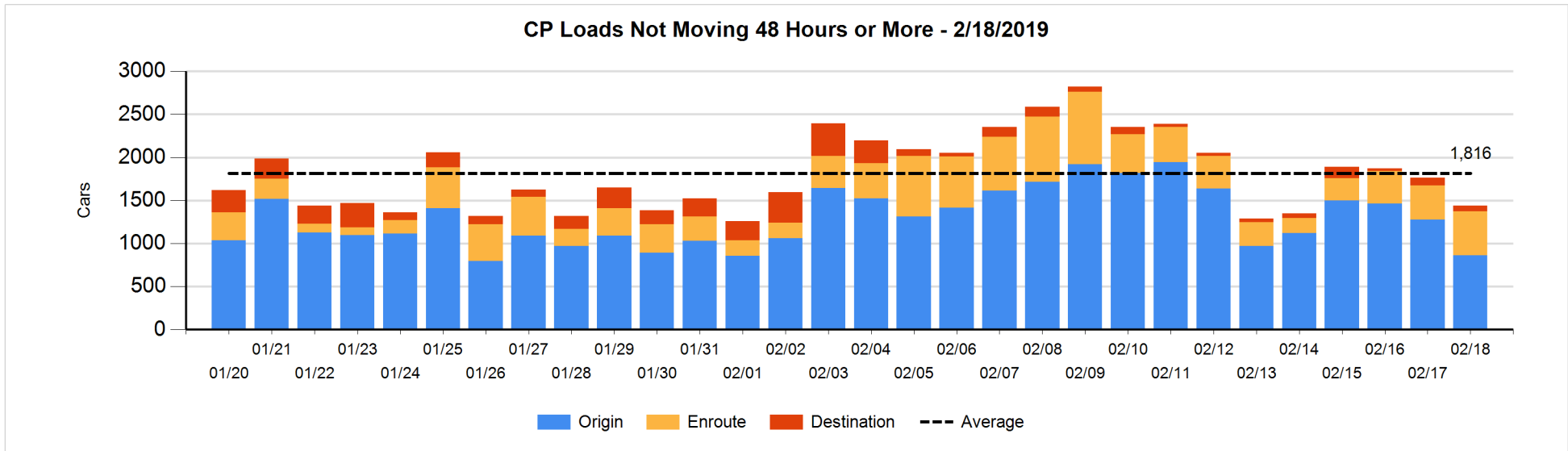
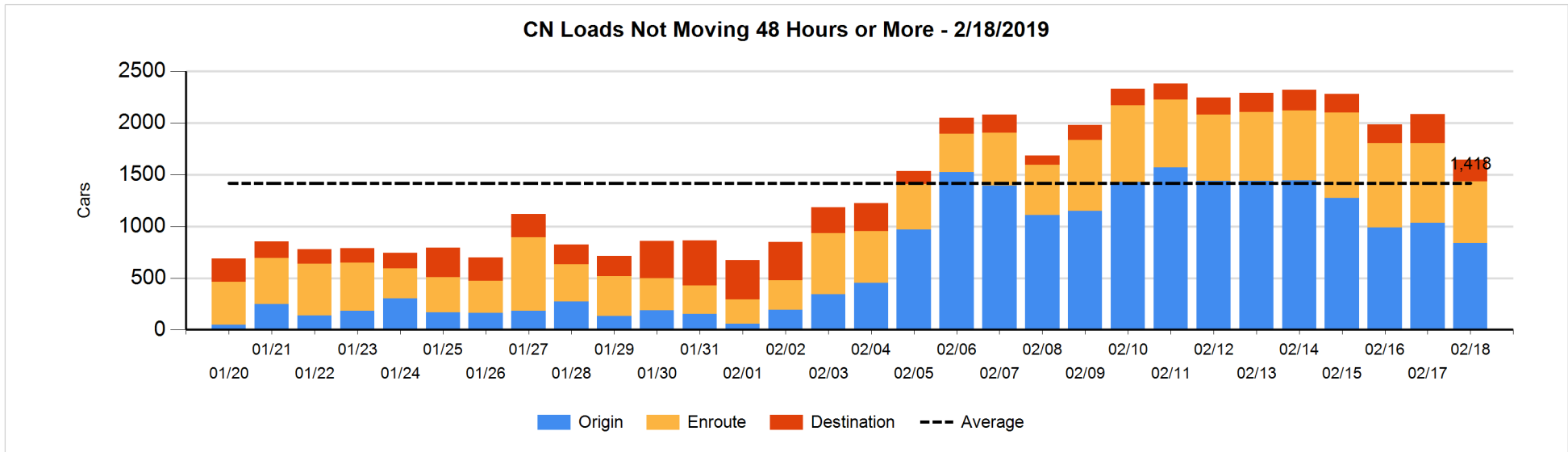


**Loads Not Moving 48 Hours or More - 2/18/2019**

	E Canada	Prince Rupert	Thunder Bay	USA/MEX	Vancouver	Total
<b>CN</b>						
Origin	151	349		67	270	837
Enroute	160	292		44	99	595
Destination	67	76	2	6	63	214
	378	717	2	117	432	1646
<b>CP</b>						
Origin	113			63	685	861
Enroute	197			61	254	512
Destination			28		36	64
	310		28	124	975	1437
<b>US Rail / Short Line</b>						
Origin						
Enroute				15		15
Destination	28			43	20	91
	28			58	20	106

**Change in Loads Not Moving 48 Hours or More - 2/18/2019**

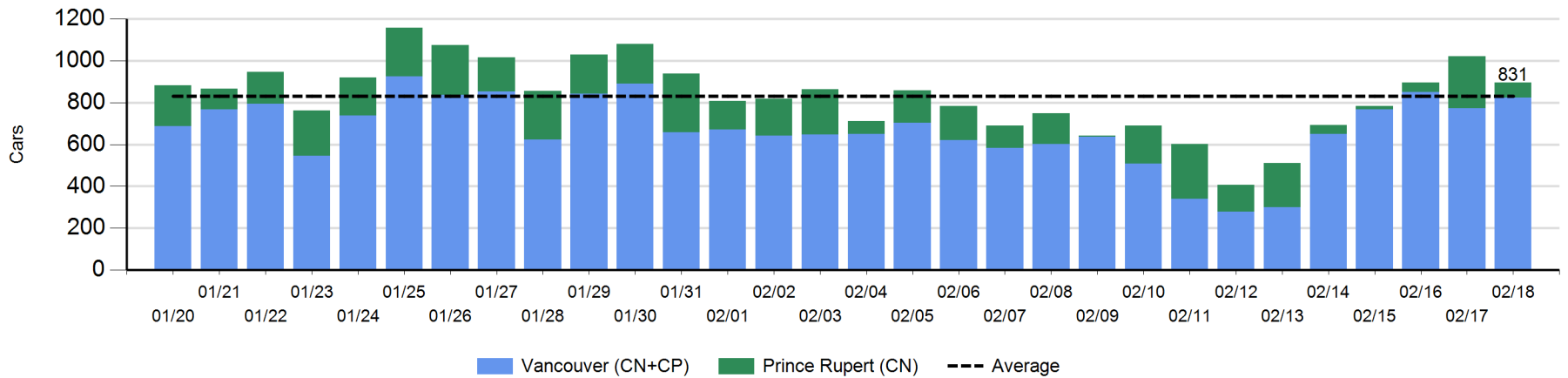
	E Canada	Prince Rupert	Thunder Bay	USA/MEX	Vancouver	Total
<b>CN</b>						
Origin	0	48		-12	-235	-199
Enroute	-21	-2		-27	-125	-175
Destination	20	0	0	-4	-83	-67
	-1	46	0	-43	-443	-441
<b>CP</b>						
Origin	-112		-1	-50	-254	-417
Enroute	41			42	34	117
Destination			-39		11	-28
	-71		-40	-8	-209	-328
<b>US Rail / Short Line</b>						
Origin						
Enroute				-2		-2
Destination	0			1	-26	-25
	0			-1	-26	-27



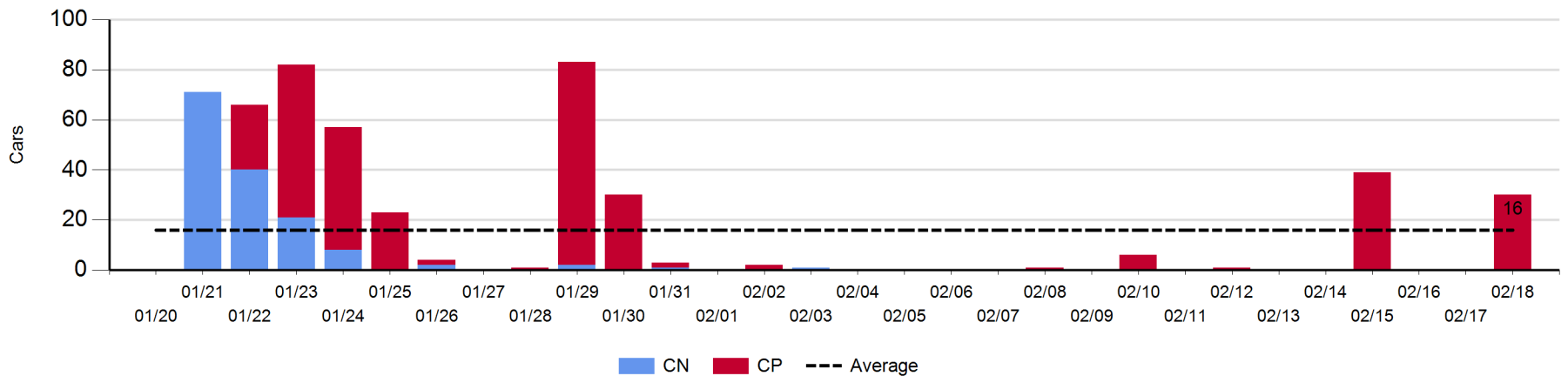
Port Unloads - 2/18/2019

	Prince Rupert	Vancouver	West Coast Total	Thunder Bay	Total
CN	72	419	491		491
CP		404	404	30	434
	72	823	895	30	925

West Coast Port Unloads - Prior 30 Days



Thunder Bay Port Unloads - Prior 30 Days





**Port Terminal Status**

**Vancouver**

Daily Activity for 2/18/2019

	Cars Arrived	Cars Received in Interchange	Cars Delivered in Interchange	Cars Placed for Unloading	Loads on Wheels at Destination As of 2/18/2019
CN	407	206	273	346	392
CP	545	273	207	342	462
SRY	2	1		11	51

**Port Unloads**

	02/18	02/17	Week To Date	Last Week
CN	419	392	419	1,989
CP	404	381	404	1,969
SRY	16		16	40

**Age Profile of Loaded Cars Waiting Placement for Unloading**

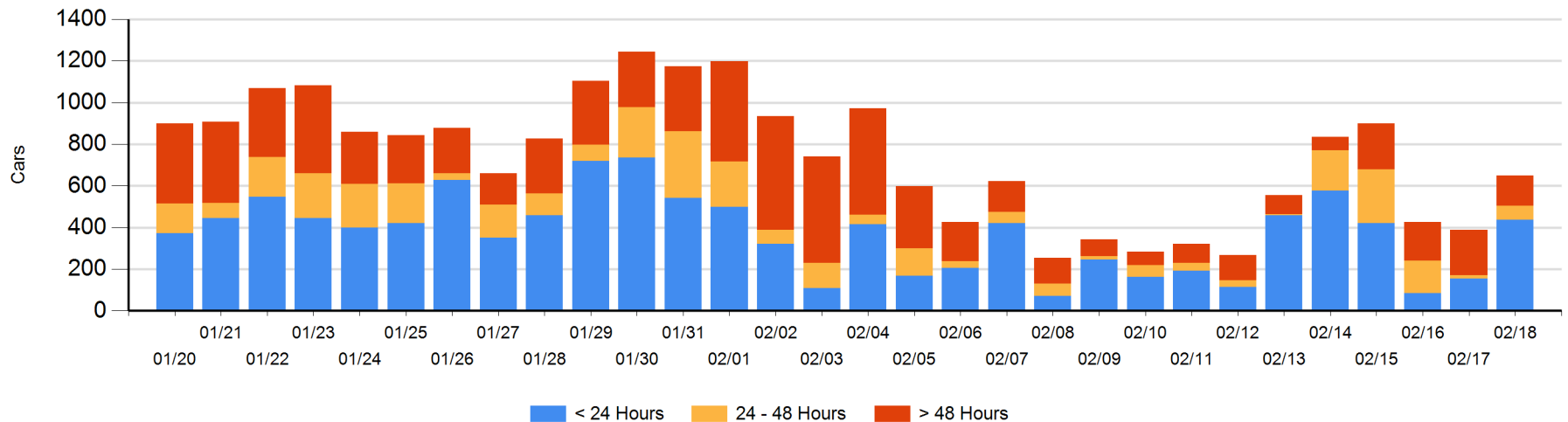
**Today**

	< 24 Hrs	24 - 48 Hrs	> 48-72 Hrs	> 72 Hrs	Total On Hand
CN	109	36	3	53	201
CP	327	32	1	86	446
SRY				2	2

**Change in Last 24 Hours**

	< 24 Hrs	24-48 Hrs	48 - 72 Hrs	> 72 Hrs
CN	61	21	-98	36
CP	220	31	-8	-3
SRY			-1	1

**Loaded Cars on Hand Vancouver Waiting for Placement - Last 30 Days All Railways**



**Port Terminal Status**

**Prince Rupert**

Daily Activity for 2/18/2019

Cars Arrived	Cars Received in Interchange	Cars Delivered in Interchange	Cars Placed for Unloading	Loads on Wheels at Destination As of 2/18/2019
				77

**Port Unloads**

	02/18	02/17	Week To Date	Last Week
CN	72	247	72	951

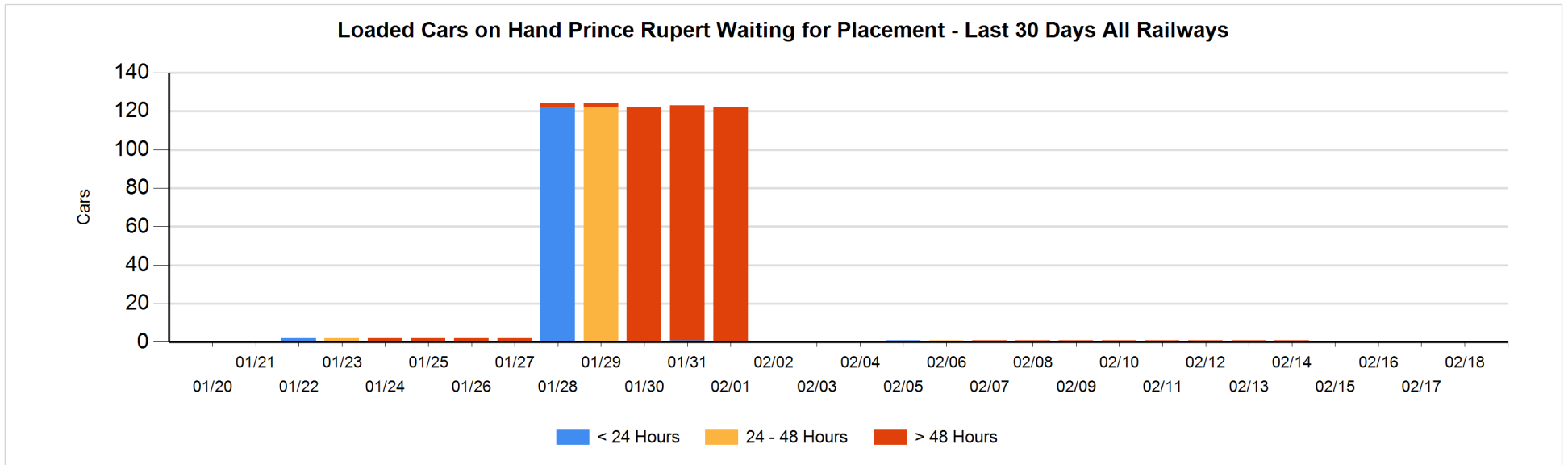
**Age Profile of Loaded Cars Waiting Placement for Unloading**

**Today**

< 24 Hrs	24 - 48 Hrs	> 48-72 Hrs	> 72 Hrs	Total On Hand
				0

**Change in Last 24 Hours**

< 24 Hrs	24-48 Hrs	48 - 72 Hrs	> 72 Hrs



**Port Terminal Status**

**Thunder Bay**

Daily Activity for 2/18/2019

	Cars Arrived	Cars Received in Interchange	Cars Delivered in Interchange	Cars Placed for Unloading	Loads on Wheels at Destination As of 2/18/2019
CN					2
CP				37	38

**Port Unloads**

	02/18	02/17	Week To Date	Last Week
CN				
CP	30		30	40

**Age Profile of Loaded Cars Waiting Placement for Unloading**

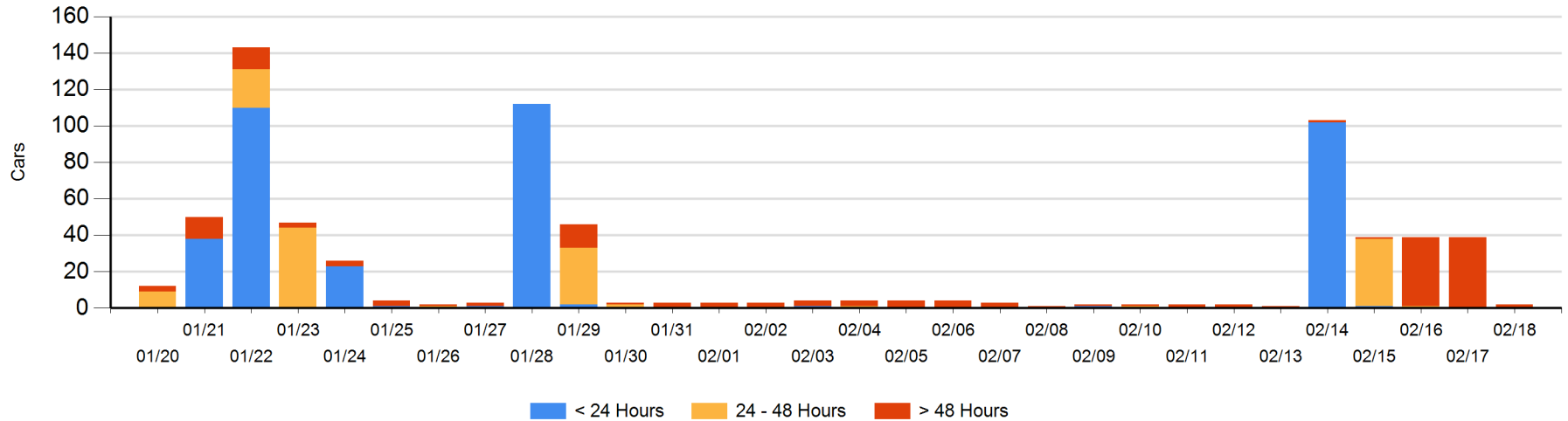
**Today**

	< 24 Hrs	24 - 48 Hrs	> 48-72 Hrs	> 72 Hrs	Total On Hand
CN				2	2
CP					0

**Change in Last 24 Hours**

	< 24 Hrs	24-48 Hrs	48 - 72 Hrs	> 72 Hrs
CN			-1	1
CP				-37

**Loaded Cars on Hand Thunder Bay Waiting for Placement - Last 30 Days All Railways**



## Measurement Definitions

Loads on Wheels	<p>Count of loaded rail cars including all rail cars that have been released loaded at origin and have not been reported by the railway as unloaded at destination.</p> <p>Counts include all rail cars (hopper cars and boxcars) moving within a pipeline.</p>
Loads Not Moving	<p>Loaded rail cars for which the railways have not reported a movement event for 48 hours or more whether the rail car is at origin, enroute or at destination.</p>
Port Unloads	<p>Count of rail cars reported by railways as unloaded at the western port destinations of Vancouver, Prince Rupert and Thunder Bay.</p> <p>Unload counts include all rail cars (hopper cars and boxcars) unloaded by all receivers including major port terminals, transloaders and other receivers.</p>
Cars Arrived	<p>Count of rail cars reported as arrived at the destination railway terminal.</p>
Cars Received in Interchange	<p>Count of rail cars received in interchange by each railway within a destination railway terminal. Interchange activity is tracked for the Vancouver and Thunder Bay pipelines as applicable.</p>
Cars Delivered in Interchange	<p>Count of rail cars delivered in interchange by each railway within a destination railway terminal. Interchange activity is tracked for the Vancouver and Thunder Bay pipelines as applicable.</p>
Cars Placed for Unloading	<p>Count of rail cars reported by the railways as placed loaded at the receiver's facility for unloading.</p>
Loads on Wheels at Destination	<p>Count of rail cars that remain under load within the destination railway terminal including rail cars that have been reported as placed for unloading but not yet reported as unloaded.</p>
Waiting Placement for Unloading	<p>Count of rail cars that have been reported as arrived at the destination railway terminal but not reported as placed for unloading by the railway.</p> <p>For the Ports of Vancouver, Prince Rupert and Thunder Bay the count of rail cars waiting placement for unloading is categorized by age – i.e. the elapsed time from arrival at destination to the current report date.</p>