

SPEED READ

- Loads on wheels increased overnight, reflecting a rise in both CN and CP volumes. On a net basis, volumes rose due to higher traffic across all corridors other than Thunder Bay.
- Network fluidity improved overnight, led by a decline in idle car counts on CP by 14% (-206) offset by a rise in idle car counts on CN by 6% (+98). The total count of cars for 4+ days on both railways declined 12% (-282) overnight - now at 1,986 cars.
- Two days in Week 30 unloads now ahead of prior week's performance by more than 700 unloads, reflecting an improvement in week over week performance at Vancouver and Thunder Bay offset by lower unloads at Prince Rupert.

Loads on Wheels

- Loads on wheels increased 4% (+402) overnight, due to higher volumes on both CN and CP - combined total at 10,905 and 5% above the trailing 30-day average.
- On a net basis, the rise in loads on wheels indicates higher volumes across all corridors other than Thunder Bay.
- CN volumes increased 4% (+213) overnight, with higher traffic in the Prince Rupert, E. Canada and USA/MEX corridors offset by lower volumes in the Vancouver corridor. System wide CN loads on wheels now at 6,070 and 13% above the trailing 30-day average.
- CP volumes increased 5% (+231) overnight, driven by a rise in volumes in the Vancouver and E. Canada corridors offset by a decline in volumes in the Thunder Bay and USA/MEX corridors. CP system wide loads on wheels now at 4,682 and 3% below the trailing 30-day average.
- Vancouver now at 6,362, rose 2% (+143) overnight, now 4% below the trailing 30-day average.
- The Prince Rupert pipeline currently at 1,967, the highest seen in the last 30 days, increased significantly by 12% (+212) overnight, and 20% above the trailing 30-day average.
- Thunder Bay volumes fell significantly by 83% (-34) overnight - now at 7 and 90% below the trailing 30-day average, with 71% of traffic moving on CP.

Hopper Car Rationing

- CN rationed 561 hopper cars in week 28.

Loads Not Moving

- **The count of cars not moving for 48+ hours declined for the fourth consecutive day, down 3% (-108) overnight, reflecting lower counts on CP offset by higher counts on CN. Idle car counts now at 2,979 and 9% below the trailing 30 day-average.**
- CN
 - **The count of idle cars for 48+ hours gained 6% (+98) overnight - currently at 1,744 cars.**
 - The number of cars idle for 4+ days declined 9% (-111) overnight - now at 1,066 cars.
 - The count of cars not moving for 7+ days decreased 10% (-63) overnight - now at 569 cars.
 - Vancouver represents 23% of all idle cars.
 - In total 58% of all idle cars are dwelling at origin locations.
- CP
 - **CP idle car counts for 48+ hours fell for the fourth consecutive day, down 14% (-206) overnight - now at 1,235 cars, the lowest seen in the last 30 days.**
 - The number of cars idle for 4+ days decreased 16% (-171) overnight - now at 920 cars.

- The number of cars idle for 7+ days increased 24% (+59) overnight - now at 302 cars.
- Vancouver accounts for 66% of all idle cars.
- In total 54% of all idle cars are dwelling at origin locations.

Port Performance

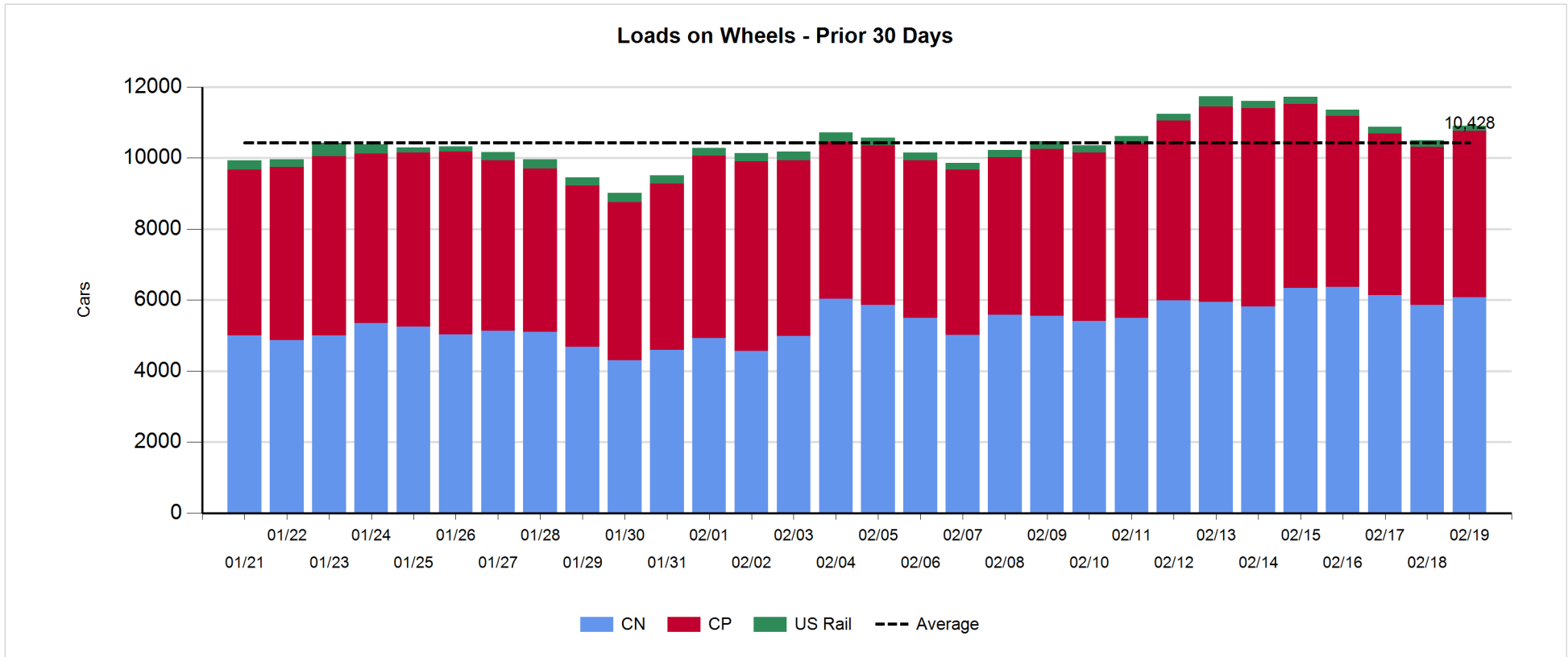
- CN and CP reported a total of 787 cars unloaded at the three major ports, now 7% below the trailing 30 day-average. Two days in Week 30 unloads now ahead of last week's pace by more than 700 unloads, reflecting higher unloads at Vancouver and Thunder Bay offset by lower unloads at Prince Rupert.
- Vancouver
 - 708 unloads reported by CN and CP at the Port of Vancouver; CN - 394 and CP - 314. Two days in Week 30 unloads are tracking ahead of last week's performance by more than 900 unloads.
 - There are 1,300 cars on site at Vancouver with more than 1,100 cars arriving at the port in the last 24 hours.
 - CN and CP have fewer than 1,100 cars in British Columbia en route to Vancouver, with 500 cars at Kamloops and west, and 50% of traffic moving on CN.
- Prince Rupert
 - Prince Rupert reported 42 unloads, now behind last week's unloads after two days by more than 250 unloads.
 - Loads on wheels now above 1,000 cars - now at 1,967 cars.
 - There are more than 550 cars west of Jasper en route to Prince Rupert.
 - There are 50 cars on site at Prince Rupert with 14 cars arriving at the port in the last 24 hours.
- Thunder Bay
 - 37 unloads were reported at Thunder Bay yesterday. Two days in Week 30 unloads are tracking ahead of last week's pace by more than 50 unloads.
 - There are 6 cars on site at Thunder Bay with zero cars arriving at the port in the prior 24 hours.
 - There are 1 car en route to Thunder Bay from Winnipeg and east.

Daily Loads on Wheels - 2/19/2019

	E Canada	Prince Rupert	Thunder Bay	USA/MEX	Vancouver	Total
CN	943	1,967	2	242	2,916	6,070
CP	782		5	499	3,396	4,682
Short Line	21				50	71
US Rail				82		82
	1,746	1,967	7	823	6,362	10,905

Change in Loads on Wheels - Prior 24 Hours

	E Canada	Prince Rupert	Thunder Bay	USA/MEX	Vancouver	Total
CN	73	212	0	49	-121	213
CP	2		-34	-2	265	231
Short Line	-7				-1	-8
US Rail				-34		-34
	68	212	-34	13	143	402

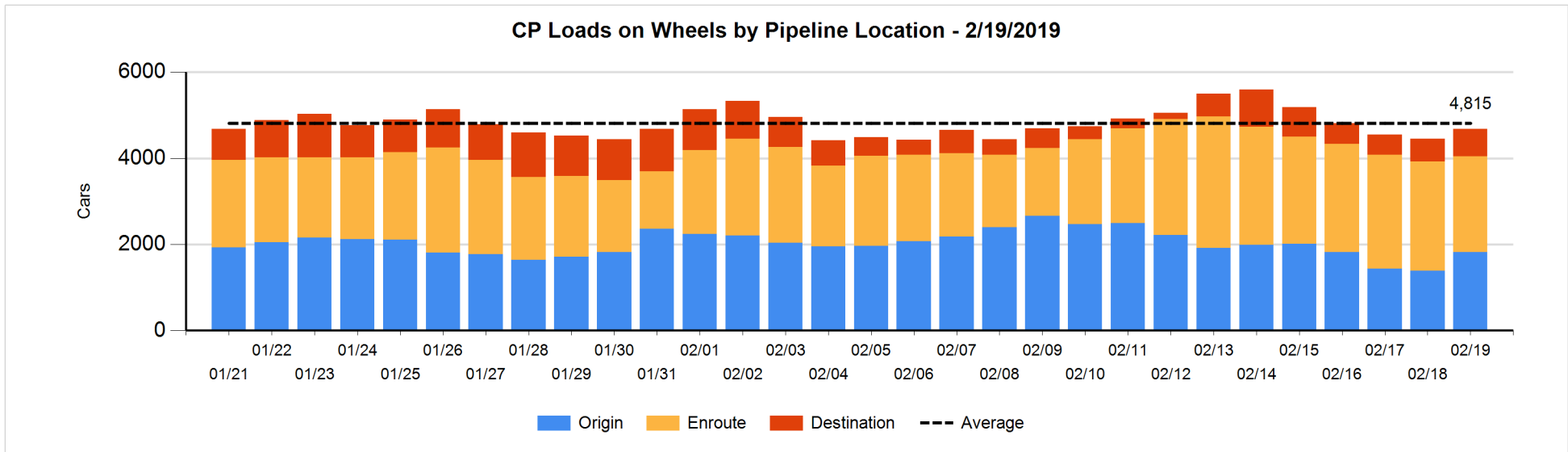
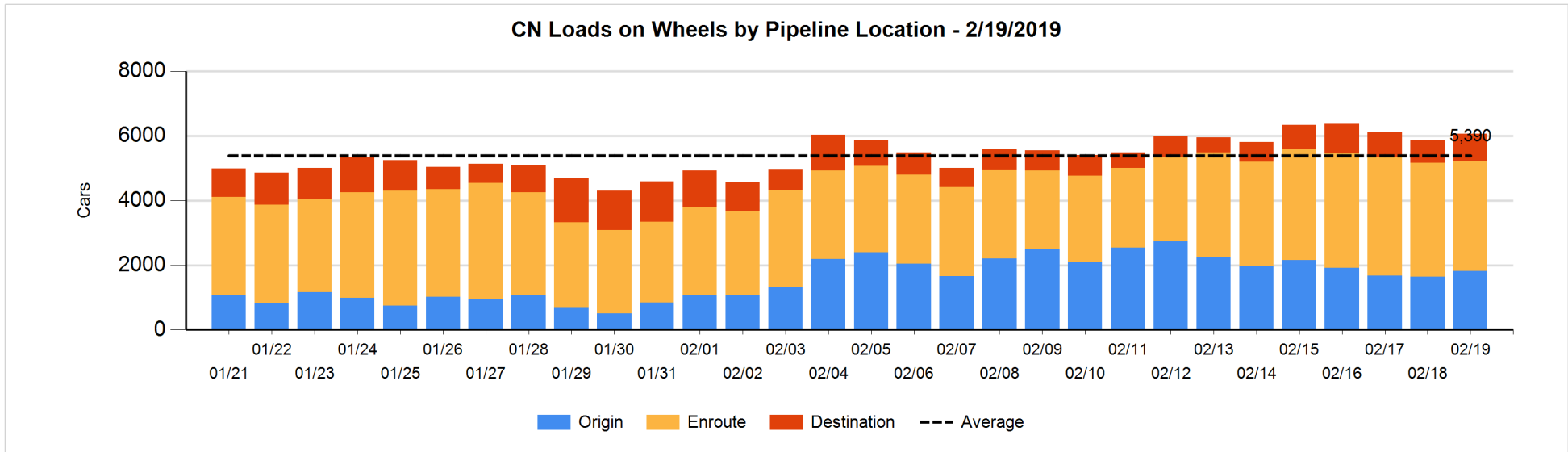


Daily Loads on Wheels By Pipeline Location - 2/19/2019

	E Canada	Prince Rupert	Thunder Bay	USA/MEX	Vancouver	Total
CN						
Origin	192	869		118	639	1,818
Enroute	603	1,048		102	1,648	3,401
Destination	148	50	2	22	629	851
	943	1,967	2	242	2,916	6,070
CP						
Origin	338			284	1,193	1,815
Enroute	443		1	202	1,583	2,229
Destination	1		4	13	620	638
	782		5	499	3,396	4,682
US Rail / Short Line						
Origin						
Enroute				40		40
Destination	21			42	50	113
	21			82	50	153

Change in Daily Loads on Wheels By Pipeline Location - Prior 24 Hours

	E Canada	Prince Rupert	Thunder Bay	USA/MEX	Vancouver	Total
CN						
Origin	40	116		50	-35	171
Enroute	95	123		-14	-323	-119
Destination	-62	-27	0	13	237	161
	73	212	0	49	-121	213
CP						
Origin	111			21	295	427
Enroute	-109		0	-16	-187	-312
Destination	0		-34	-7	157	116
	2		-34	-2	265	231
US Rail / Short Line						
Origin						
Enroute				-22		-22
Destination	-7			-12	-1	-20
	-7			-34	-1	-42

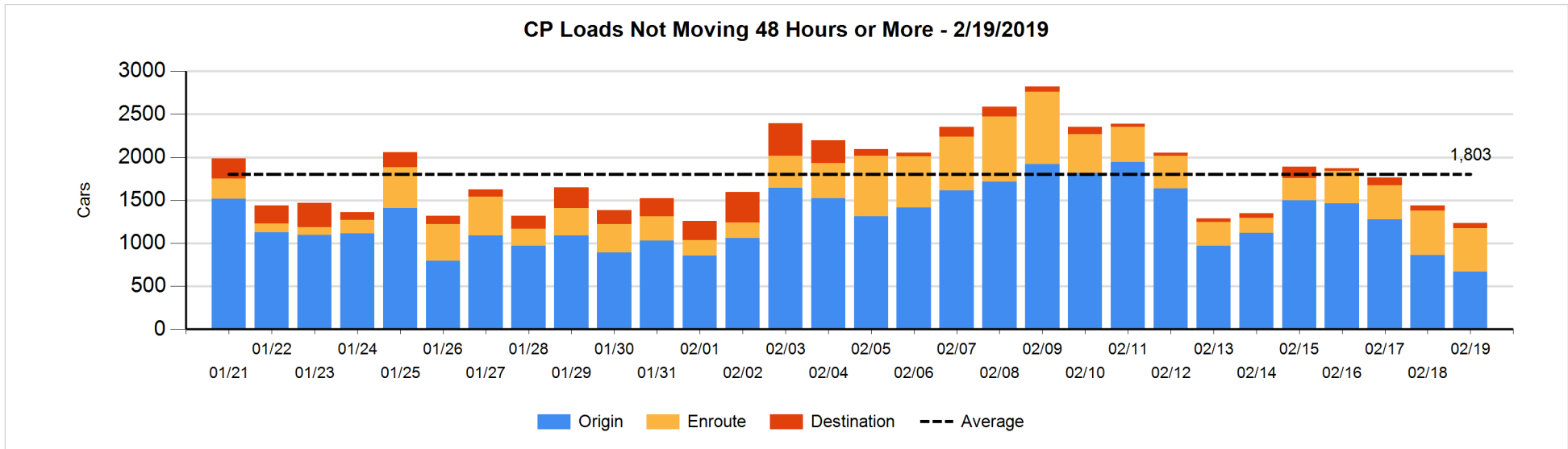
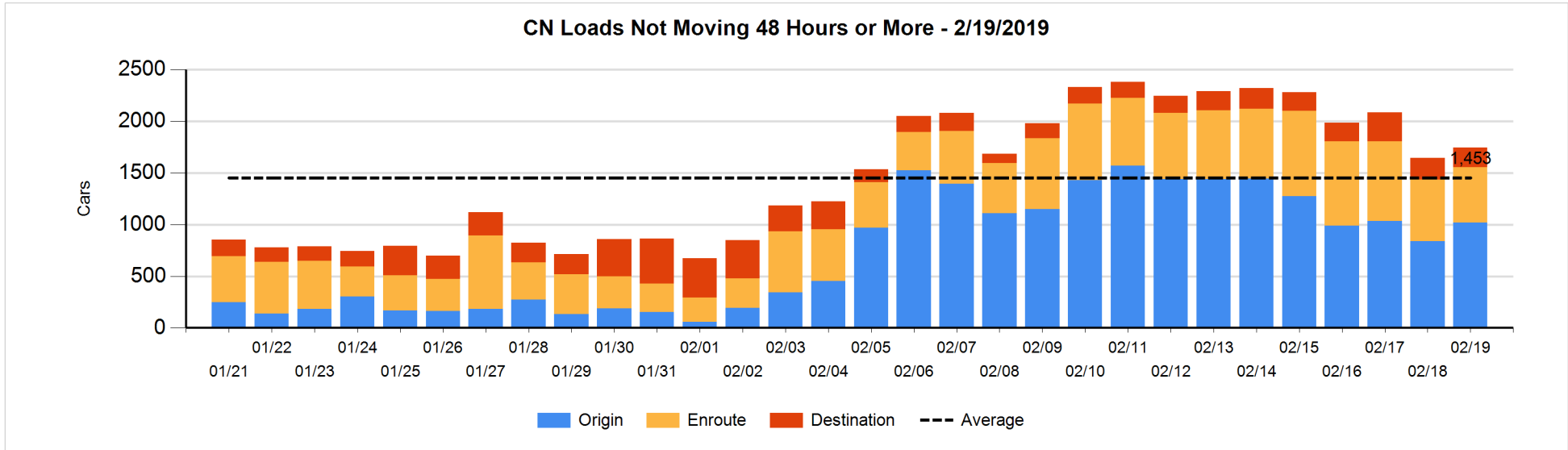


Loads Not Moving 48 Hours or More - 2/19/2019

	E Canada	Prince Rupert	Thunder Bay	USA/MEX	Vancouver	Total
CN						
Origin	149	593		64	212	1018
Enroute	163	191		45	139	538
Destination	106	36	2	1	43	188
	418	820	2	110	394	1744
CP						
Origin	113			38	521	672
Enroute	198			50	257	505
Destination	1		3	13	41	58
	312		3	101	819	1235
US Rail / Short Line						
Origin						
Enroute				22		22
Destination	21			34	14	69
	21			56	14	91

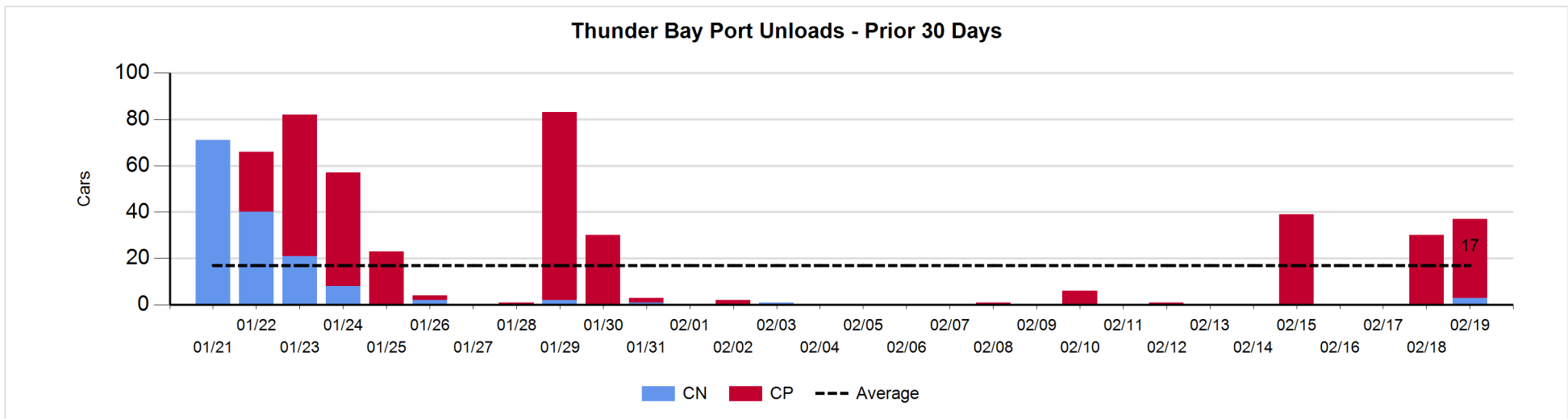
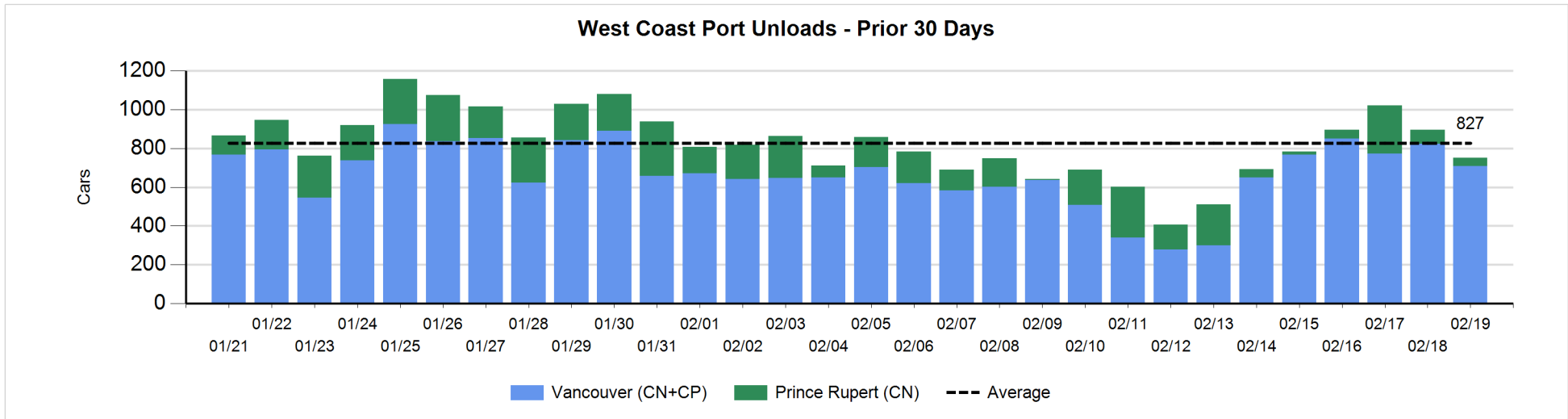
Change in Loads Not Moving 48 Hours or More - 2/19/2019

	E Canada	Prince Rupert	Thunder Bay	USA/MEX	Vancouver	Total
CN						
Origin	-2	244		-3	-58	181
Enroute	3	-101		1	40	-57
Destination	39	-40	0	-5	-20	-26
	40	103	0	-7	-38	98
CP						
Origin	-2			-26	-164	-192
Enroute	1			-12	3	-8
Destination	1		-25	13	5	-6
	0		-25	-25	-156	-206
US Rail / Short Line						
Origin						
Enroute				7		7
Destination	-7			-9	-6	-22
	-7			-2	-6	-15



Port Unloads - 2/19/2019

	Prince Rupert	Vancouver	West Coast Total	Thunder Bay	Total
CN	42	394	436	3	439
CP		314	314	34	348
	42	708	750	37	787



Port Terminal Status

Vancouver

Daily Activity for 2/19/2019

	Cars Arrived	Cars Received in Interchange	Cars Delivered in Interchange	Cars Placed for Unloading	Loads on Wheels at Destination As of 2/19/2019
CN	658	203	139	523	629
CP	453	139	203	440	620
SRY				7	50

Port Unloads

	02/19	02/18	Week To Date	Last Week
CN	394	419	813	1,989
CP	314	404	718	1,969
SRY	10	16	26	40

Age Profile of Loaded Cars Waiting Placement for Unloading

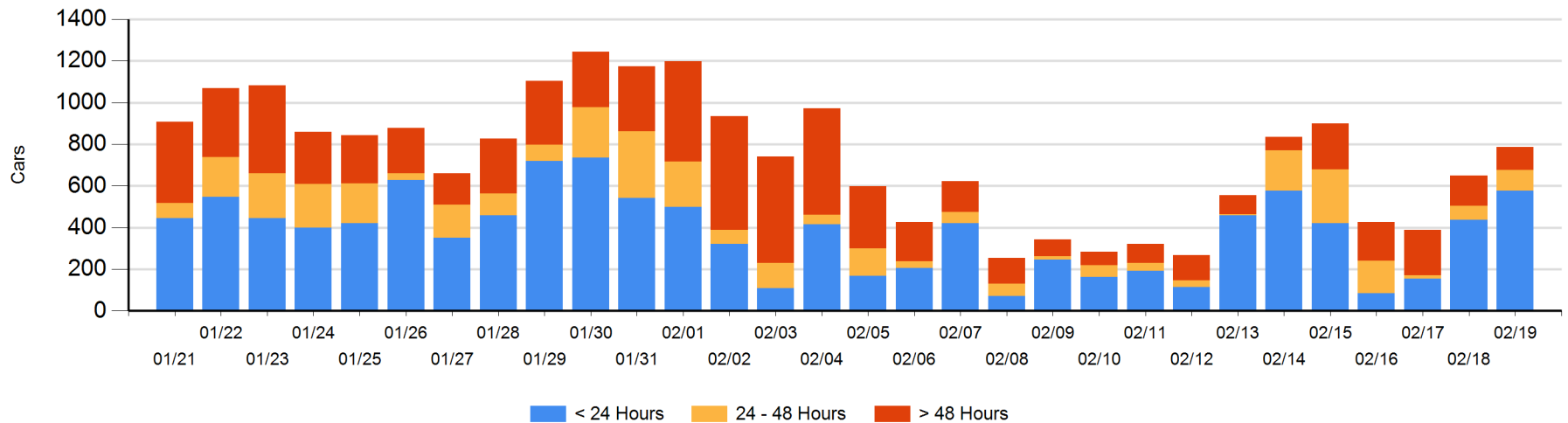
Today

	< 24 Hrs	24 - 48 Hrs	> 48-72 Hrs	> 72 Hrs	Total On Hand
CN	335	21	4	17	377
CP	243	68	10	77	398
SRY		9		2	11

Change in Last 24 Hours

	< 24 Hrs	24-48 Hrs	48 - 72 Hrs	> 72 Hrs
CN	235	-14	1	-36
CP	-85	35	9	-9
SRY	-9	9		0

Loaded Cars on Hand Vancouver Waiting for Placement - Last 30 Days All Railways



Port Terminal Status

Prince Rupert

Daily Activity for 2/19/2019

	Cars Arrived	Cars Received in Interchange	Cars Delivered in Interchange	Cars Placed for Unloading	Loads on Wheels at Destination As of 2/19/2019
CN	14			15	50

Port Unloads

	02/19	02/18	Week To Date	Last Week
CN	42	72	114	951

Age Profile of Loaded Cars Waiting Placement for Unloading

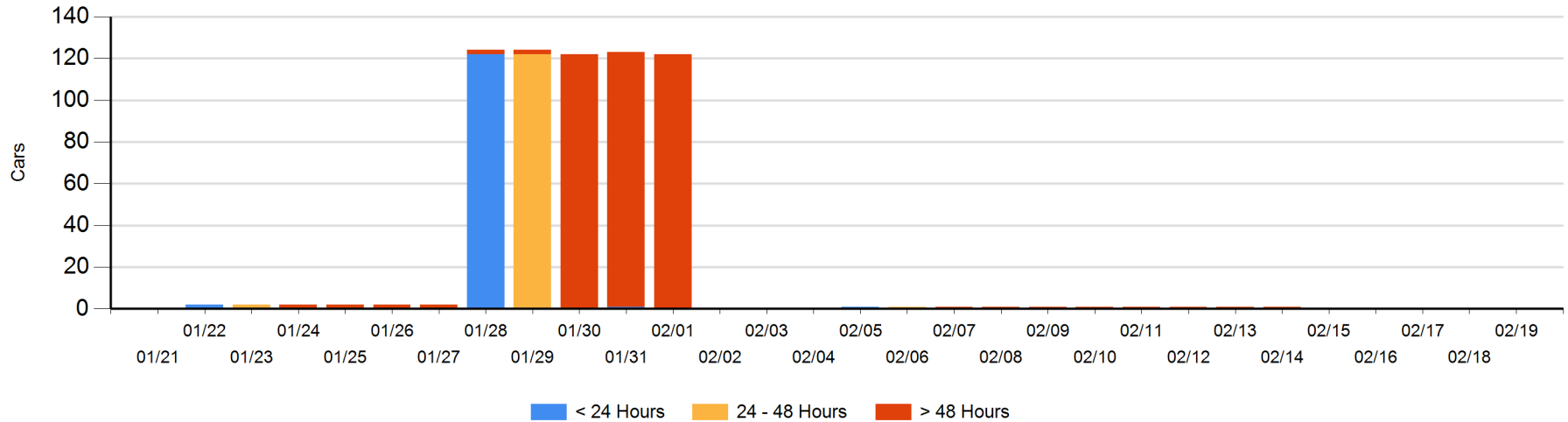
Today

	< 24 Hrs	24 - 48 Hrs	> 48-72 Hrs	> 72 Hrs	Total On Hand
CN					0

Change in Last 24 Hours

	< 24 Hrs	24-48 Hrs	48 - 72 Hrs	> 72 Hrs
CN				

Loaded Cars on Hand Prince Rupert Waiting for Placement - Last 30 Days All Railways



Port Terminal Status

Thunder Bay

Daily Activity for 2/19/2019

	Cars Arrived	Cars Received in Interchange	Cars Delivered in Interchange	Cars Placed for Unloading	Loads on Wheels at Destination As of 2/19/2019
CN					2
CP					4

Port Unloads

	02/19	02/18	Week To Date	Last Week
CN	3		3	
CP	34	30	64	40

Age Profile of Loaded Cars Waiting Placement for Unloading

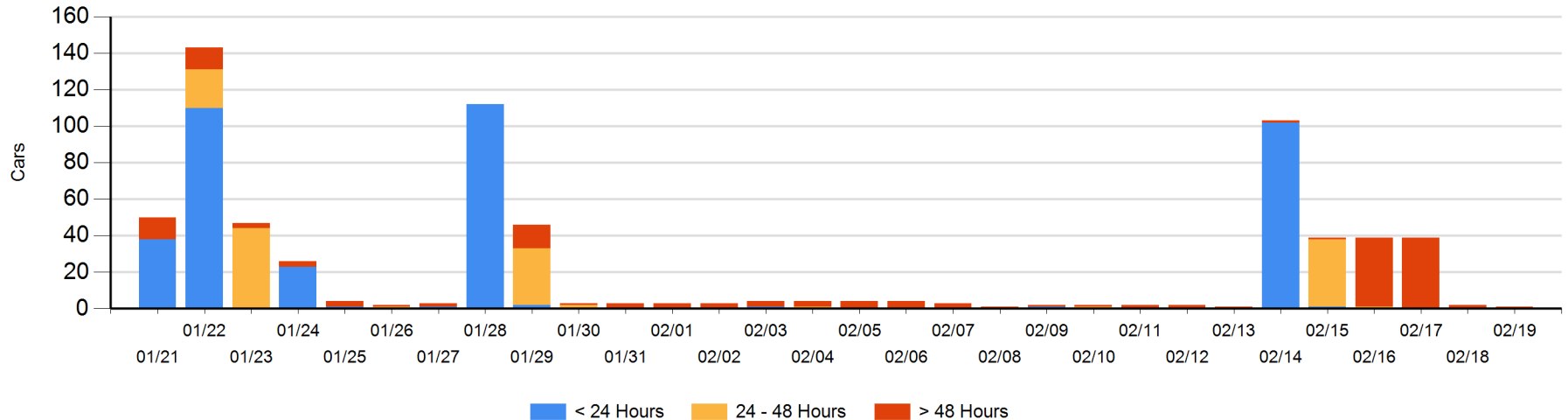
Today

	< 24 Hrs	24 - 48 Hrs	> 48-72 Hrs	> 72 Hrs	Total On Hand
CN				1	1
CP					0

Change in Last 24 Hours

	< 24 Hrs	24-48 Hrs	48 - 72 Hrs	> 72 Hrs
CN				-1
CP				

Loaded Cars on Hand Thunder Bay Waiting for Placement - Last 30 Days All Railways



Measurement Definitions

Loads on Wheels	<p>Count of loaded rail cars including all rail cars that have been released loaded at origin and have not been reported by the railway as unloaded at destination.</p> <p>Counts include all rail cars (hopper cars and boxcars) moving within a pipeline.</p>
Loads Not Moving	<p>Loaded rail cars for which the railways have not reported a movement event for 48 hours or more whether the rail car is at origin, enroute or at destination.</p>
Port Unloads	<p>Count of rail cars reported by railways as unloaded at the western port destinations of Vancouver, Prince Rupert and Thunder Bay.</p> <p>Unload counts include all rail cars (hopper cars and boxcars) unloaded by all receivers including major port terminals, transloaders and other receivers.</p>
Cars Arrived	<p>Count of rail cars reported as arrived at the destination railway terminal.</p>
Cars Received in Interchange	<p>Count of rail cars received in interchange by each railway within a destination railway terminal. Interchange activity is tracked for the Vancouver and Thunder Bay pipelines as applicable.</p>
Cars Delivered in Interchange	<p>Count of rail cars delivered in interchange by each railway within a destination railway terminal. Interchange activity is tracked for the Vancouver and Thunder Bay pipelines as applicable.</p>
Cars Placed for Unloading	<p>Count of rail cars reported by the railways as placed loaded at the receiver's facility for unloading.</p>
Loads on Wheels at Destination	<p>Count of rail cars that remain under load within the destination railway terminal including rail cars that have been reported as placed for unloading but not yet reported as unloaded.</p>
Waiting Placement for Unloading	<p>Count of rail cars that have been reported as arrived at the destination railway terminal but not reported as placed for unloading by the railway.</p> <p>For the Ports of Vancouver, Prince Rupert and Thunder Bay the count of rail cars waiting placement for unloading is categorized by age – i.e. the elapsed time from arrival at destination to the current report date.</p>