

SPEED READ

- Loads on wheels decreased overnight, marking a decline in CN traffic offset by higher CP volumes. On a net basis, volumes fell due to lower traffic in the Prince Rupert and E. Canada corridors offset by higher traffic in the Vancouver, USA/MEX and Thunder Bay corridors.
- Network fluidity deteriorated overnight, led by a rise in idle car counts on CN by 18% (+302) offset by a decline in idle car counts on CP by 6% (-97). The total count of cars for 4+ days on both railways decreased marginally (-8) overnight - currently at 1,784 cars.
- Four days in Week 30 unloads now ahead of prior week's performance by more than 1,550 unloads, marking an improvement in week over week performance at Vancouver and Thunder Bay offset by reduced unloads at Prince Rupert.

Loads on Wheels

- Loads on wheels decreased 2% (-188) overnight, due to reduced volumes on CN offset by higher traffic on CP - combined total at 10,066 and 4% below the trailing 30-day average.
- On a net basis, the decline in loads on wheels indicates reduced traffic in the Prince Rupert and E. Canada corridors offset by higher traffic in the Vancouver, USA/MEX and Thunder Bay corridors.
- CN volumes decreased 9% (-483) overnight, with reduced traffic in the Prince Rupert, Vancouver and E. Canada corridors offset by higher traffic in the USA/MEX and Thunder Bay corridors. System wide CN loads on wheels presently at 5,111 and 6% below the trailing 30-day average.
- CP volumes increased 9% (+381) overnight, driven by a rise in traffic in the Vancouver and USA/MEX corridors offset by a decline in traffic in the E. Canada corridor. CP system wide loads on wheels presently at 4,786 and in line with the trailing 30-day average.
- Vancouver presently at 6,080, gained 4% (+218) overnight, now 8% below the trailing 30-day average.
- The Prince Rupert pipeline presently at 1,491, fell significantly by 17% (-308) overnight, and 8% below the trailing 30 day-average.
- Thunder Bay volumes increased 50% (+4) overnight - presently at 12 and 77% below the trailing 30-day average, with 50% of traffic moving on CP.

Hopper Car Rationing

- CN rationed 561 hopper cars in week 28.

Loads Not Moving

- **The count of cars not moving for 48+ hours increased 6% (+205) overnight, reflecting higher counts on CN offset by lower counts on CP. Idle car counts currently at 3,493 and 5% above the trailing 30-day average.**
- CN
 - **The count of idle cars for 48+ hours increased 18% (+302) overnight - presently at 2,001 cars.**
 - The number of cars idle for 4+ days gained 8% (+80) overnight - presently at 1,057 cars.
 - The count of cars not moving for 7+ days decreased 16% (-103) overnight - now at 541 cars.
 - Vancouver represents 38% of all idle cars.
 - In total 69% of all idle cars are dwelling at origin locations.
- CP
 - **CP idle car counts for 48+ hours fell 6% (-97) overnight - presently at 1,492 cars.**
 - The number of cars idle for 4+ days decreased for the third consecutive day, down 11% (-88) overnight - now at 727 cars.
 - The number of cars idle for 7+ days rose 2% (+8) overnight and have now increased for the third consecutive day - now at 472 cars.

- Vancouver accounts for 60% of all idle cars.
- In total 61% of all idle cars are dwelling at origin locations.

Port Performance

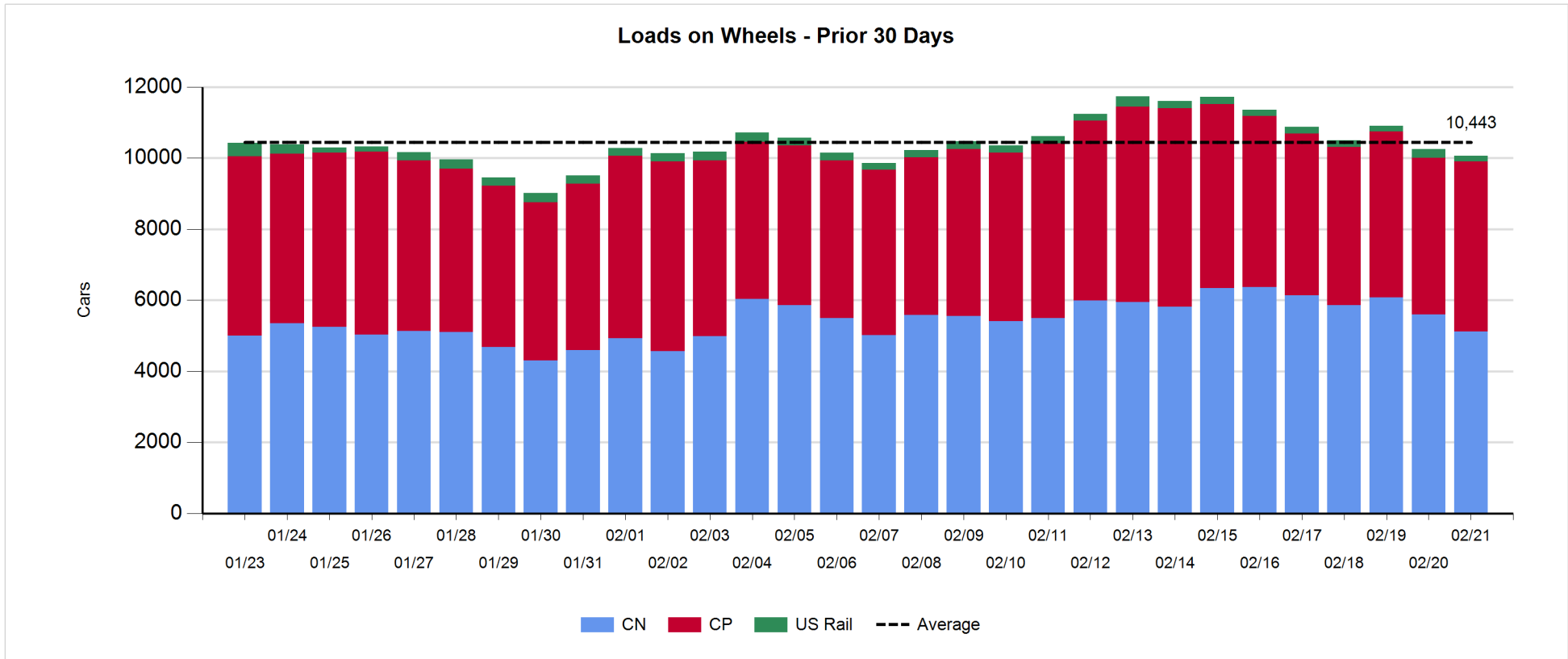
- CN and CP reported a total of 977 cars unloaded at the three major ports, now 15% above the trailing 30-day average. Four days in Week 30 unloads now ahead of last week's pace by more than 1,550 unloads, marking higher unloads at Vancouver and Thunder Bay offset by reduced unloads at Prince Rupert.
- Vancouver
 - 663 unloads reported by CN and CP at the Port of Vancouver; CN - 415 and CP - 248. Four days in Week 30 unloads are tracking ahead of last week's performance by 1,550 unloads.
 - There are more than 1,050 cars on site at Vancouver with fewer than 650 cars arriving at the port in the last 24 hours.
 - CN and CP have fewer than 950 cars in British Columbia en route to Vancouver, with 450 cars at Kamloops and west, and 80% of traffic moving on CP.
- Prince Rupert
 - Prince Rupert reported 308 unloads, the highest seen in the last 30 days, now behind last week's unloads after four days by 50 unloads.
 - Loads on wheels now above 1,000 cars - presently at 1,491 cars.
 - There are 250 cars west of Jasper en route to Prince Rupert.
 - There are nearly 250 cars on site at Prince Rupert with more than 200 cars arriving at the port in the last 24 hours.
- Thunder Bay
 - 6 unloads were reported at Thunder Bay yesterday. Four days in Week 30 unloads are tracking ahead of last week's pace by more than 50 unloads.
 - There are 8 cars on site at Thunder Bay with 1 car arriving at the port in the prior 24 hours.
 - There are 2 cars en route to Thunder Bay from Winnipeg and east.

Daily Loads on Wheels - 2/21/2019

	E Canada	Prince Rupert	Thunder Bay	USA/MEX	Vancouver	Total
CN	829	1,491	6	239	2,546	5,111
CP	658		6	613	3,509	4,786
Short Line	81				25	106
US Rail				63		63
	1,568	1,491	12	915	6,080	10,066

Change in Loads on Wheels - Prior 24 Hours

	E Canada	Prince Rupert	Thunder Bay	USA/MEX	Vancouver	Total
CN	-76	-308	4	10	-113	-483
CP	-30		0	71	340	381
Short Line	-79				-9	-88
US Rail				2		2
	-185	-308	4	83	218	-188

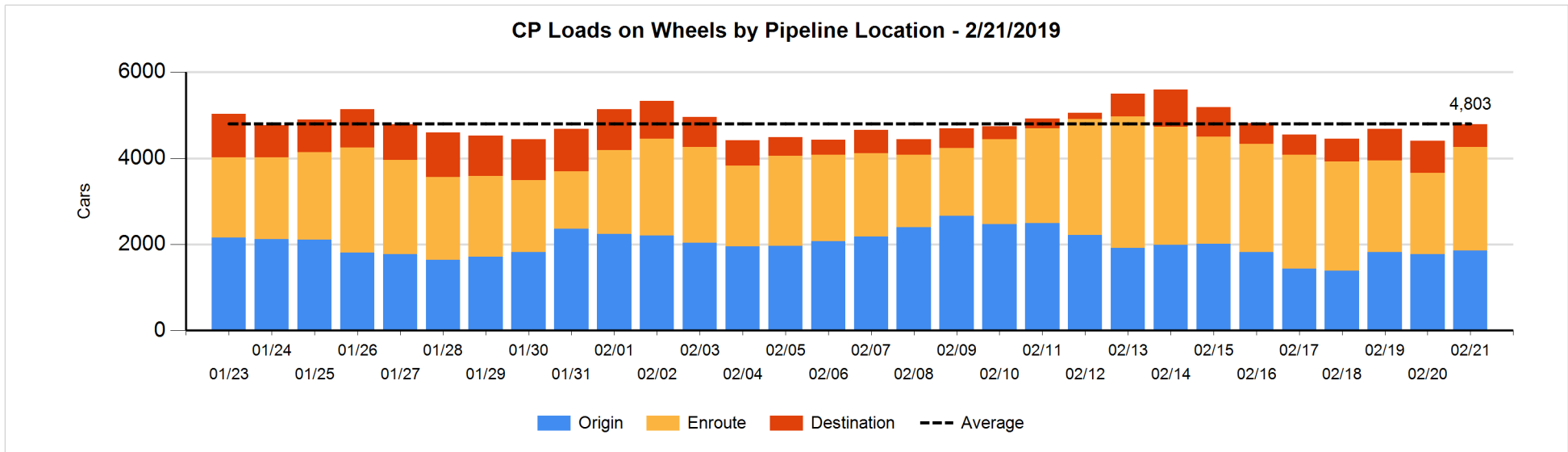
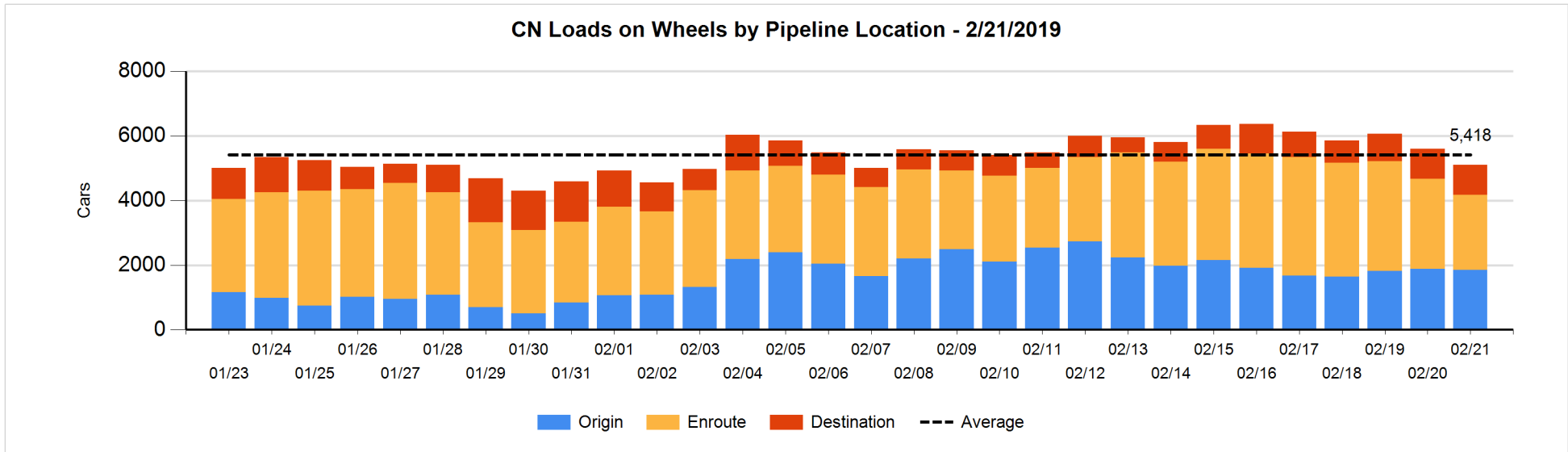


Daily Loads on Wheels By Pipeline Location - 2/21/2019

	E Canada	Prince Rupert	Thunder Bay	USA/MEX	Vancouver	Total
CN						
Origin	225	570		108	940	1,843
Enroute	455	690	4	127	1,057	2,333
Destination	149	231	2	4	549	935
	829	1,491	6	239	2,546	5,111
CP						
Origin	341			282	1,231	1,854
Enroute	303			326	1,780	2,409
Destination	14		6	5	498	523
	658		6	613	3,509	4,786
US Rail / Short Line						
Origin						
Enroute	35			32		67
Destination	46			31	25	102
	81			63	25	169

Change in Daily Loads on Wheels By Pipeline Location - Prior 24 Hours

	E Canada	Prince Rupert	Thunder Bay	USA/MEX	Vancouver	Total
CN						
Origin	-105	-95		-13	174	-39
Enroute	25	-146	4	24	-370	-463
Destination	4	-67	0	-1	83	19
	-76	-308	4	10	-113	-483
CP						
Origin	3			-50	127	80
Enroute	54		-1	146	323	522
Destination	-87		1	-25	-110	-221
	-30		0	71	340	381
US Rail / Short Line						
Origin						
Enroute	-66			0		-66
Destination	-13			2	-9	-20
	-79			2	-9	-86

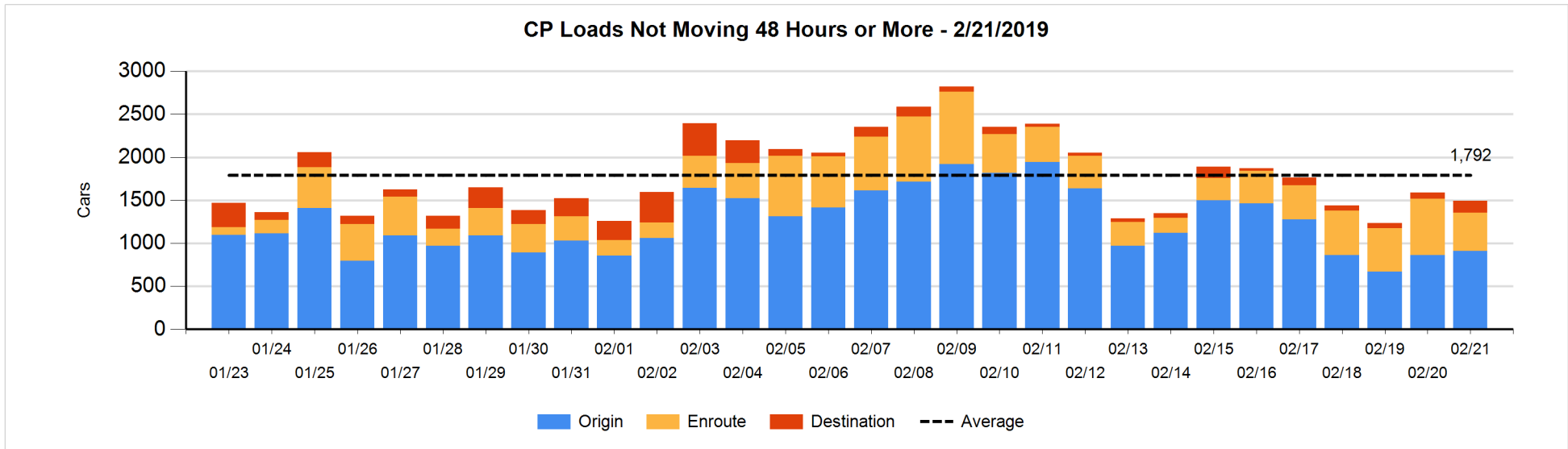
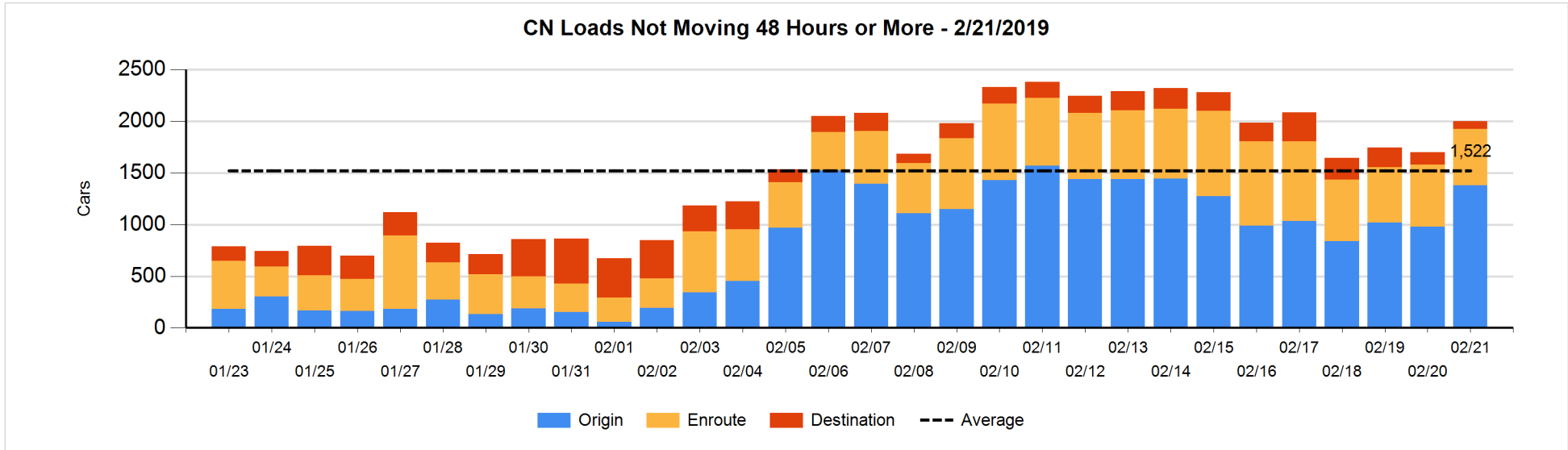


Loads Not Moving 48 Hours or More - 2/21/2019

	E Canada	Prince Rupert	Thunder Bay	USA/MEX	Vancouver	Total
CN						
Origin	175	570		100	535	1380
Enroute	137	173		32	201	543
Destination	41	10	1	4	22	78
	353	753	1	136	758	2001
CP						
Origin	337			133	442	912
Enroute	101			19	320	440
Destination	1		1		138	140
	439		1	152	900	1492
US Rail / Short Line						
Origin						
Enroute				16		16
Destination				25	14	39
				41	14	55

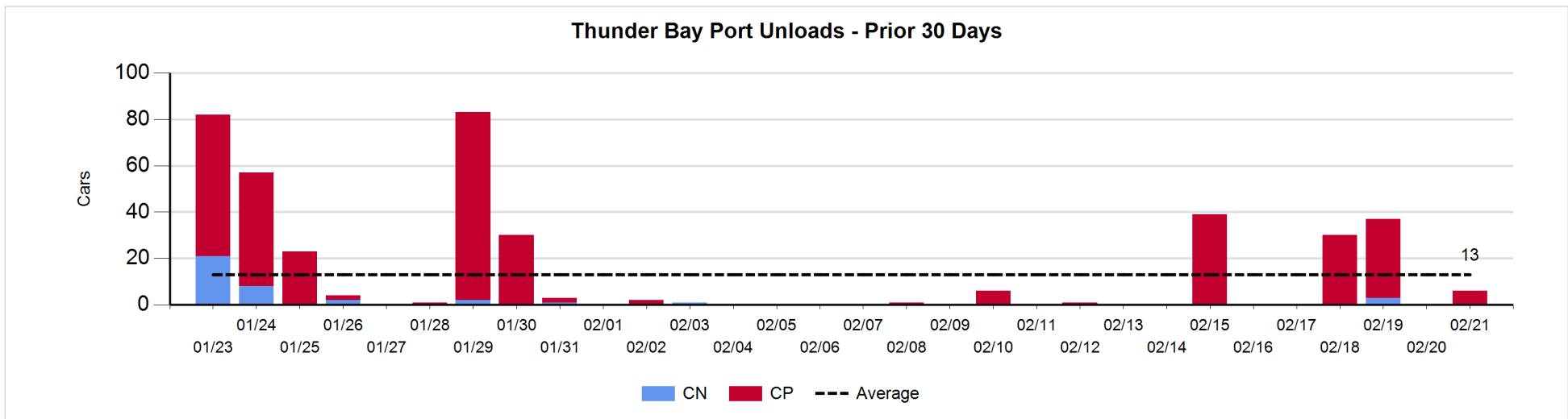
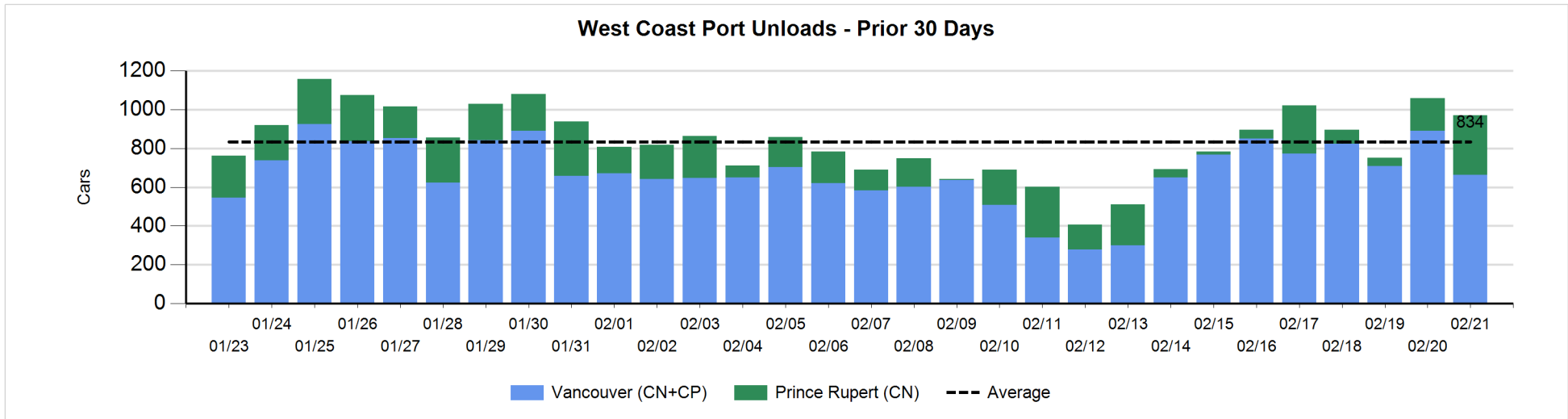
Change in Loads Not Moving 48 Hours or More - 2/21/2019

	E Canada	Prince Rupert	Thunder Bay	USA/MEX	Vancouver	Total
CN						
Origin	25	159		35	184	403
Enroute	-8	-53		3	0	-58
Destination	-4	-26	-1	3	-15	-43
	13	80	-1	41	169	302
CP						
Origin	112			-54	-6	52
Enroute	-7			-101	-111	-219
Destination	0		0	-11	81	70
	105		0	-166	-36	-97
US Rail / Short Line						
Origin						
Enroute				0		0
Destination	-10			-1	-3	-14
	-10			-1	-3	-14



Port Unloads - 2/21/2019

	Prince Rupert	Vancouver	West Coast Total	Thunder Bay	Total
CN	308	415	723		723
CP		248	248	6	254
	308	663	971	6	977



Port Terminal Status

Vancouver

Daily Activity for 2/21/2019

	Cars Arrived	Cars Received in Interchange	Cars Delivered in Interchange	Cars Placed for Unloading	Loads on Wheels at Destination As of 2/21/2019
CN	509	125	134	443	549
CP	127	134	131	231	498
SRY		6		4	25

Port Unloads

	02/21	02/20	Week To Date	Last Week
CN	415	483	1,711	1,989
CP	248	407	1,373	1,969
SRY	9	20	55	40

Age Profile of Loaded Cars Waiting Placement for Unloading

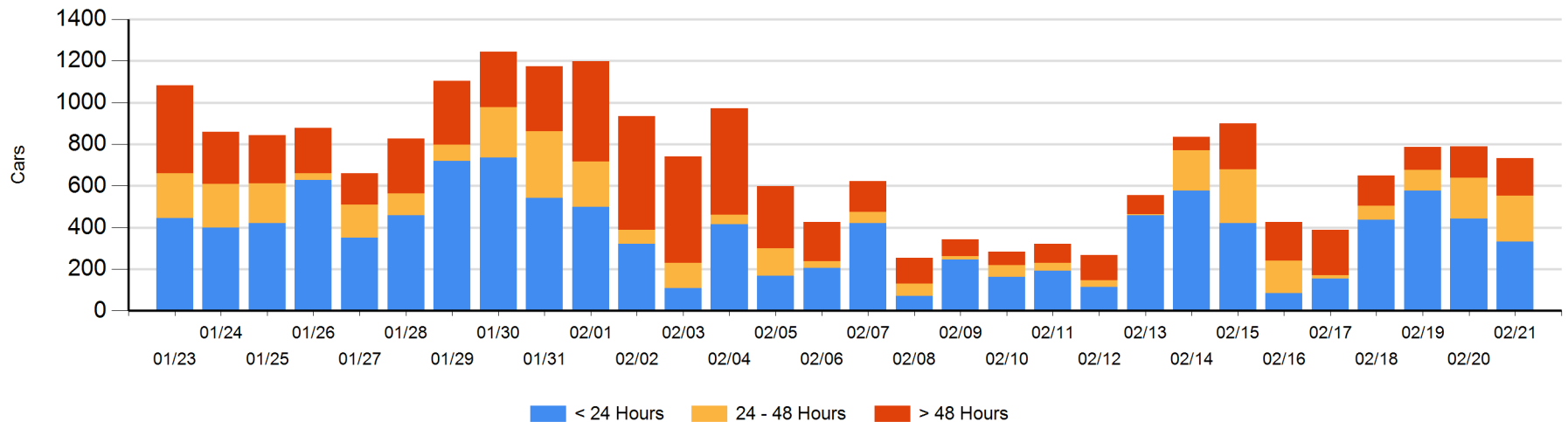
Today

	< 24 Hrs	24 - 48 Hrs	> 48-72 Hrs	> 72 Hrs	Total On Hand
CN	291	63	10	12	376
CP	42	156	59	94	351
SRY				7	7

Change in Last 24 Hours

	< 24 Hrs	24-48 Hrs	48 - 72 Hrs	> 72 Hrs
CN	133	-51	5	-3
CP	-240	72	2	33
SRY	-2		-9	5

Loaded Cars on Hand Vancouver Waiting for Placement - Last 30 Days All Railways



Port Terminal Status

Prince Rupert

Daily Activity for 2/21/2019

	Cars Arrived	Cars Received in Interchange	Cars Delivered in Interchange	Cars Placed for Unloading	Loads on Wheels at Destination As of 2/21/2019
CN	212			209	231

Port Unloads

	02/21	02/20	Week To Date	Last Week
CN	308	168	590	951

Age Profile of Loaded Cars Waiting Placement for Unloading

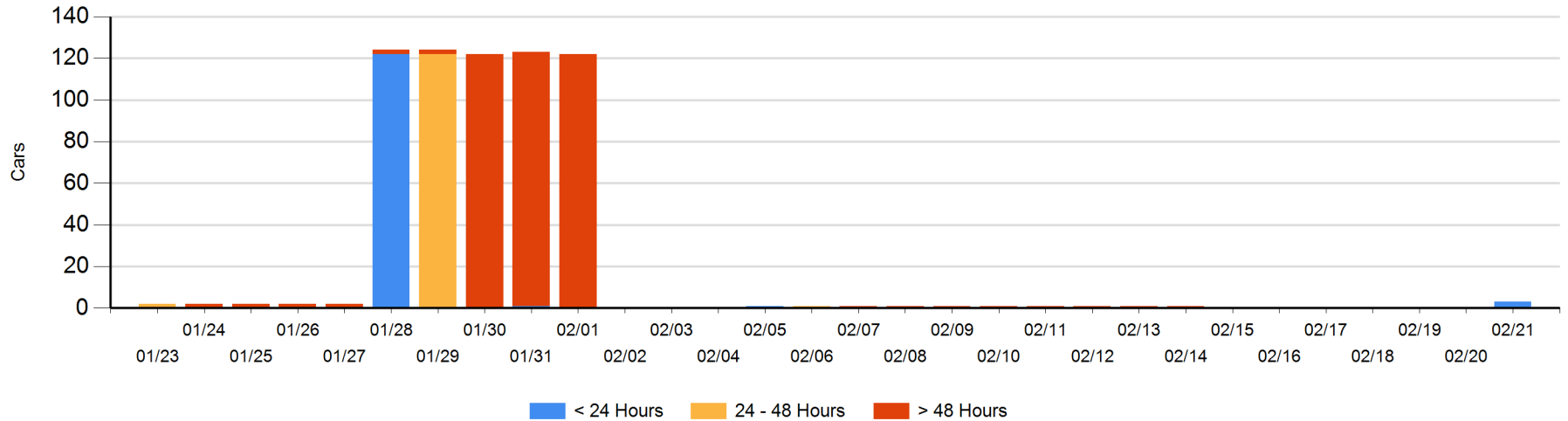
Today

	< 24 Hrs	24 - 48 Hrs	> 48-72 Hrs	> 72 Hrs	Total On Hand
CN	3				3

Change in Last 24 Hours

	< 24 Hrs	24-48 Hrs	48 - 72 Hrs	> 72 Hrs
CN	3			

Loaded Cars on Hand Prince Rupert Waiting for Placement - Last 30 Days All Railways



Port Terminal Status

Thunder Bay

Daily Activity for 2/21/2019

	Cars Arrived	Cars Received in Interchange	Cars Delivered in Interchange	Cars Placed for Unloading	Loads on Wheels at Destination As of 2/21/2019
CN					2
CP	1				6

Port Unloads

	02/21	02/20	Week To Date	Last Week
CN			3	
CP	6		70	40

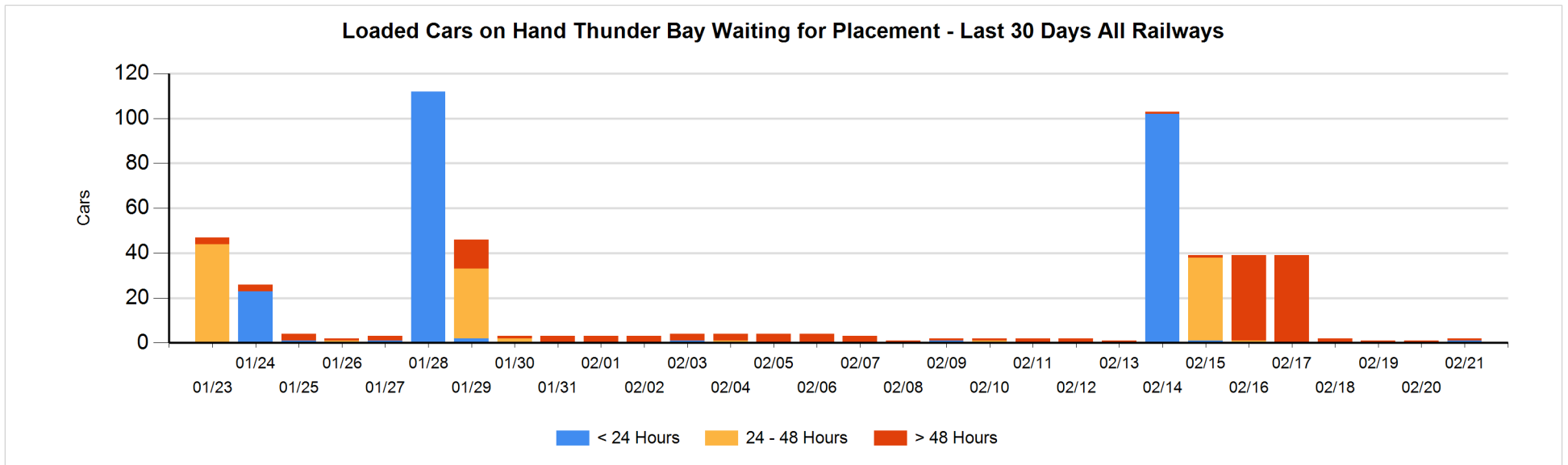
Age Profile of Loaded Cars Waiting Placement for Unloading

Today

	< 24 Hrs	24 - 48 Hrs	> 48-72 Hrs	> 72 Hrs	Total On Hand
CN				1	1
CP	1				1

Change in Last 24 Hours

	< 24 Hrs	24-48 Hrs	48 - 72 Hrs	> 72 Hrs
CN				0
CP	1			



Measurement Definitions

Loads on Wheels	<p>Count of loaded rail cars including all rail cars that have been released loaded at origin and have not been reported by the railway as unloaded at destination.</p> <p>Counts include all rail cars (hopper cars and boxcars) moving within a pipeline.</p>
Loads Not Moving	<p>Loaded rail cars for which the railways have not reported a movement event for 48 hours or more whether the rail car is at origin, enroute or at destination.</p>
Port Unloads	<p>Count of rail cars reported by railways as unloaded at the western port destinations of Vancouver, Prince Rupert and Thunder Bay.</p> <p>Unload counts include all rail cars (hopper cars and boxcars) unloaded by all receivers including major port terminals, transloaders and other receivers.</p>
Cars Arrived	<p>Count of rail cars reported as arrived at the destination railway terminal.</p>
Cars Received in Interchange	<p>Count of rail cars received in interchange by each railway within a destination railway terminal. Interchange activity is tracked for the Vancouver and Thunder Bay pipelines as applicable.</p>
Cars Delivered in Interchange	<p>Count of rail cars delivered in interchange by each railway within a destination railway terminal. Interchange activity is tracked for the Vancouver and Thunder Bay pipelines as applicable.</p>
Cars Placed for Unloading	<p>Count of rail cars reported by the railways as placed loaded at the receiver's facility for unloading.</p>
Loads on Wheels at Destination	<p>Count of rail cars that remain under load within the destination railway terminal including rail cars that have been reported as placed for unloading but not yet reported as unloaded.</p>
Waiting Placement for Unloading	<p>Count of rail cars that have been reported as arrived at the destination railway terminal but not reported as placed for unloading by the railway.</p> <p>For the Ports of Vancouver, Prince Rupert and Thunder Bay the count of rail cars waiting placement for unloading is categorized by age – i.e. the elapsed time from arrival at destination to the current report date.</p>