

## SPEED READ

- Loads on wheels increased overnight, marking a rise in CN volumes offset by lower CP volumes. On a net basis, volumes gained due to higher traffic in the USA/MEX, Prince Rupert and Vancouver corridors offset by reduced traffic in the E. Canada corridor.
- Network fluidity deteriorated overnight, led by a rise in idle car counts on CN by 5% (+115) offset by a decline in idle car counts on CP by 5% (-84). The total count of cars for 4+ days on both railways decreased marginally by 1% (-34) overnight - presently at 3,004 cars.
- Four days in Week 31 unloads now behind prior week's performance by 600 unloads, marking reduced unloads at Vancouver and Thunder Bay offset by improved week over week performance at Prince Rupert.

---

## Loads on Wheels

- Loads on wheels increased 2% (+172) overnight, due to higher volumes on CN offset by lower traffic on CP - combined total at 10,118 and 3% below the trailing 30-day average.
- On a net basis, the rise in loads on wheels indicates higher volumes in the USA/MEX, Prince Rupert and Vancouver corridors offset by reduced traffic in the E. Canada corridor.
- CN volumes gained 4% (+211) overnight, with higher volumes in the Vancouver, Prince Rupert and USA/MEX corridors offset by reduced traffic in the E. Canada corridor. System wide CN loads on wheels presently at 5,545 and 1% above the trailing 30-day average.
- CP volumes decreased slightly by 1% (-23) overnight, driven by a decline in volumes across all corridors other than USA/MEX. CP system wide loads on wheels presently at 4,295 and 9% below the trailing 30-day average.
- Vancouver currently at 6,064, increased slightly by 1% (+41) overnight, now 8% below the trailing 30-day average.
- The Prince Rupert pipeline currently at 1,694, rose 5% (+81) overnight, and 6% above the trailing 30-day average.
- Thunder Bay volumes remained unchanged (0) overnight - now at 67 and 116% above the trailing 30-day average, with 93% of traffic moving on CP.

## Hopper Car Rationing

- CN rationed 995 hopper cars in week 29.
- CP rationed 9 hopper cars in week 29.

## Loads Not Moving

- **The count of cars not moving for 48+ hours increased slightly by 1% (+31) overnight, marking higher counts on CN offset by reduced counts on CP. Idle car counts presently at 4,282 and 16% above the trailing 30-day average.**
- CN
  - **The count of idle cars for 48+ hours increased for the fifth consecutive day, up 5% (+115) overnight - presently at 2,595 cars, the highest seen in the last 30 days.**
  - The number of cars idle for 4+ days gained 6% (+104) overnight and have now increased for the third consecutive day - presently at 1,898 cars, the highest seen in the last 30 days.
  - The count of cars not moving for 7+ days increased 15% (+104) overnight - currently at 809 cars.
  - Vancouver represents 47% of all idle cars.
  - In total 82% of all idle cars are dwelling at origin locations.
- CP
  - **CP idle car counts for 48+ hours fell for the third consecutive day, down 5% (-84) overnight - currently at 1,687 cars.**

- The number of cars idle for 4+ days declined 11% (-138) overnight - presently at 1,106 cars.
- The number of cars idle for 7+ days decreased 11% (-64) overnight - now at 538 cars.
- Vancouver accounts for 74% of all idle cars.
- In total 68% of all idle cars are dwelling at origin locations.

### **Port Performance**

- CN and CP reported a total of 678 cars unloaded at the three major ports, now 17% below the trailing 30 day-average. Four days in Week 31 unloads now behind last week's pace by 600 unloads, marking reduced unloads at Vancouver and Thunder Bay offset by higher unloads at Prince Rupert.
- Vancouver
  - 676 unloads reported by CN and CP at the Port of Vancouver; CN - 407 and CP - 269. Four days in Week 31 unloads are tracking behind last week's performance by 550 unloads.
  - There are about 850 cars on site at Vancouver with nearly 850 cars arriving at the port in the last 24 hours.
  - CN and CP have 600 cars in British Columbia en route to Vancouver, with 350 cars at Kamloops and west, and 71% of traffic moving on CP.
- Prince Rupert
  - Prince Rupert reported zero unloads, now ahead of last week's unloads after four days by 21 unloads.
  - Loads on wheels now above 1,000 cars - presently at 1,694 cars.
  - There are 400 cars west of Jasper en route to Prince Rupert.
  - There are 1 car on site at Prince Rupert with 1 car arriving at the port in the last 24 hours.
- Thunder Bay
  - 2 unloads were reported at Thunder Bay yesterday. Four days in Week 31 unloads are tracking behind last week's pace by more than 50 unloads.
  - There are 11 cars on site at Thunder Bay with zero cars arriving at the port in the prior 24 hours.
  - There are zero cars en route to Thunder Bay from Winnipeg and east.

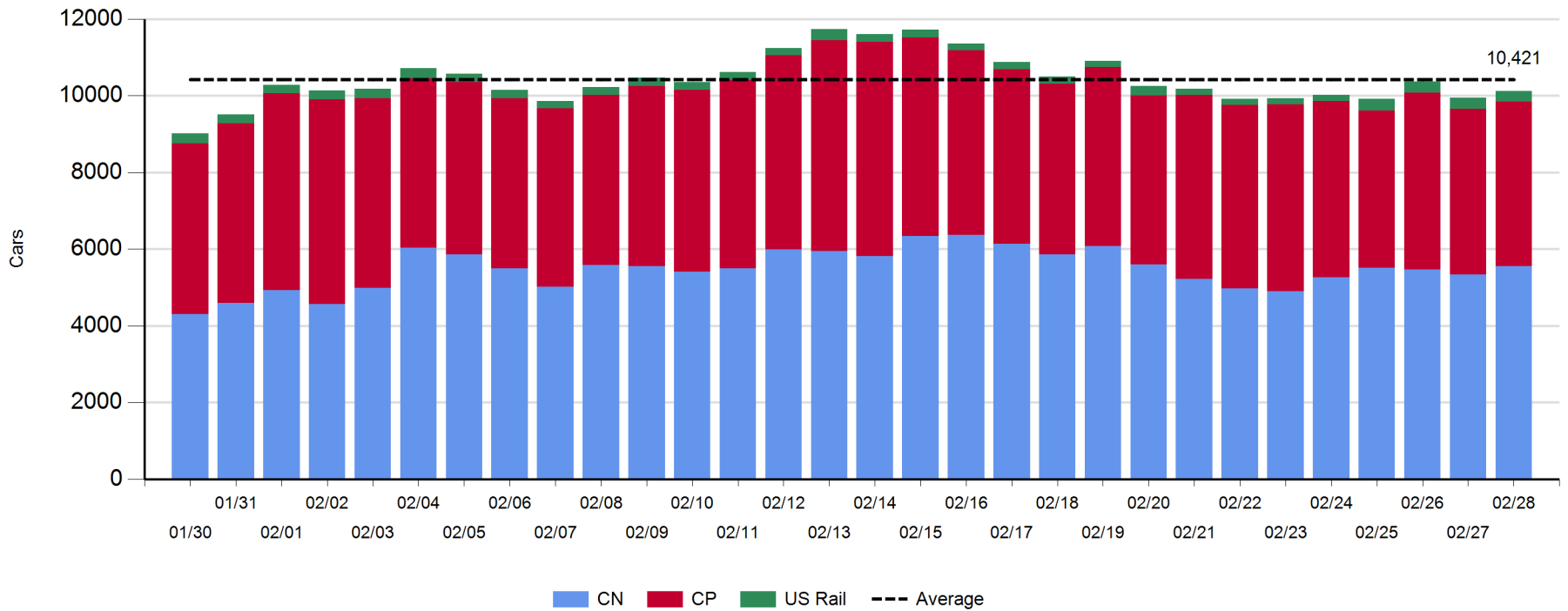
**Daily Loads on Wheels - 2/28/2019**

	E Canada	Prince Rupert	Thunder Bay	USA/MEX	Vancouver	Total
CN	712	1,694	5	275	2,859	5,545
CP	438		62	642	3,153	4,295
Short Line	31				52	83
US Rail				195		195
	1,181	1,694	67	1,112	6,064	10,118

**Change in Loads on Wheels - Prior 24 Hours**

	E Canada	Prince Rupert	Thunder Bay	USA/MEX	Vancouver	Total
CN	-30	81	0	3	157	211
CP	-92		0	175	-106	-23
Short Line	-14				-10	-24
US Rail				8		8
	-136	81	0	186	41	172

**Loads on Wheels - Prior 30 Days**

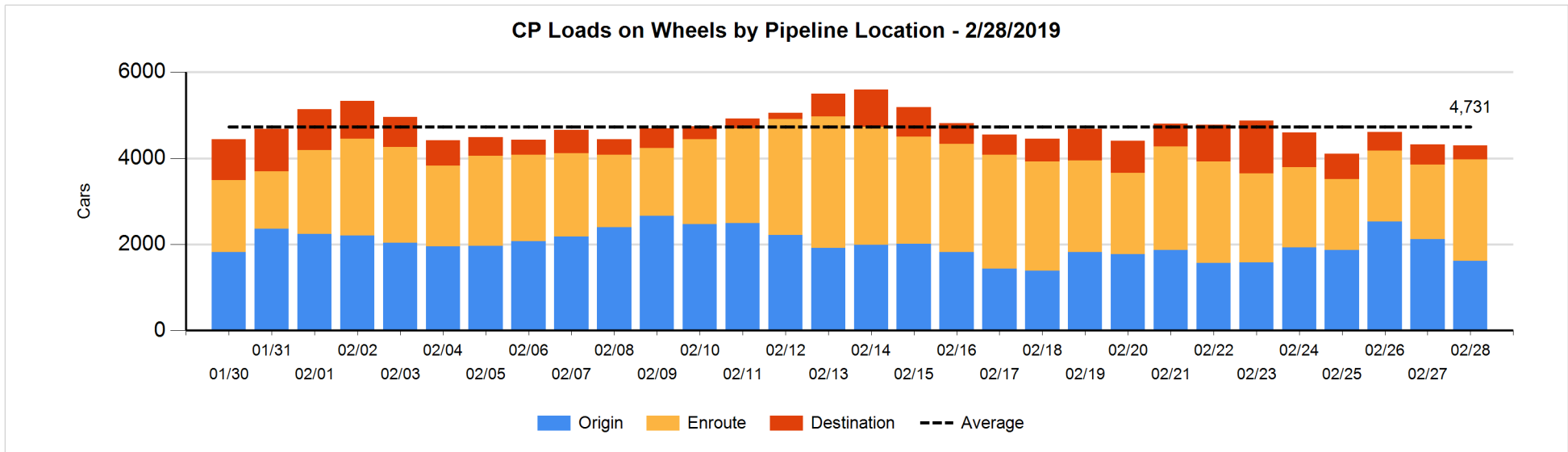
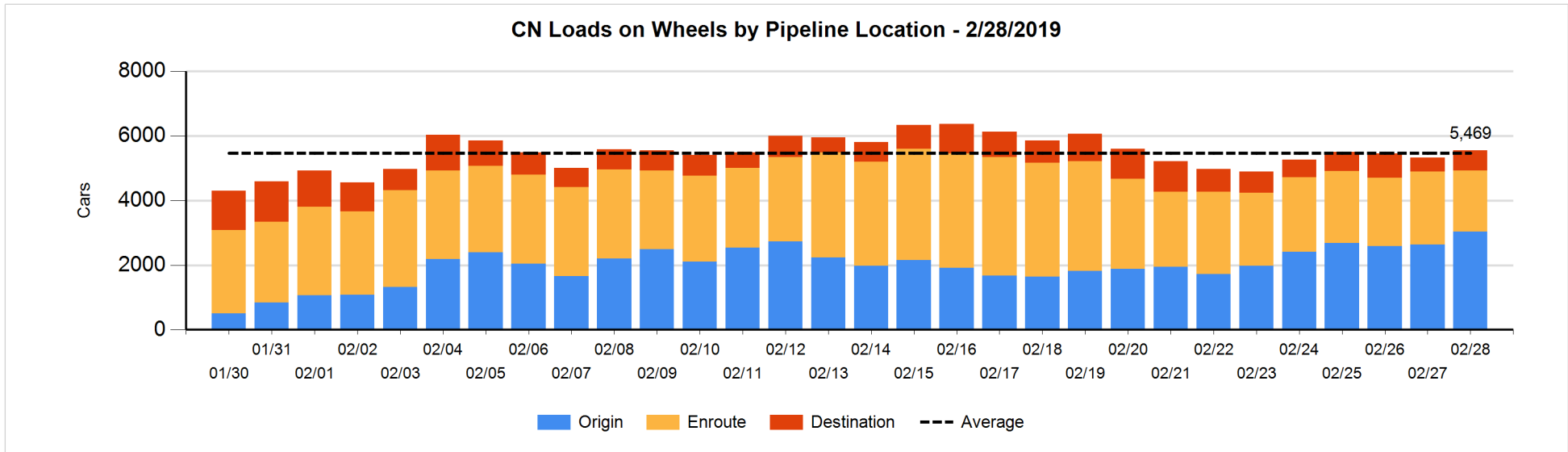


**Daily Loads on Wheels By Pipeline Location - 2/28/2019**

	E Canada	Prince Rupert	Thunder Bay	USA/MEX	Vancouver	Total
CN						
Origin	101	1,160		64	1,711	3,036
Enroute	505	533		209	651	1,898
Destination	106	1	5	2	497	611
	712	1,694	5	275	2,859	5,545
CP						
Origin	171		56	230	1,159	1,616
Enroute	246			410	1,705	2,361
Destination	21		6	2	289	318
	438		62	642	3,153	4,295
US Rail / Short Line						
Origin						
Enroute	18			150		168
Destination	13			45	52	110
	31			195	52	278

**Change in Daily Loads on Wheels By Pipeline Location - Prior 24 Hours**

	E Canada	Prince Rupert	Thunder Bay	USA/MEX	Vancouver	Total
CN						
Origin	1	81		2	321	405
Enroute	-5	-1		1	-363	-368
Destination	-26	1	0	0	199	174
	-30	81	0	3	157	211
CP						
Origin	-114		0	196	-592	-510
Enroute	114			-5	526	635
Destination	-92		0	-16	-40	-148
	-92		0	175	-106	-23
US Rail / Short Line						
Origin						
Enroute	-1			-2		-3
Destination	-13			10	-10	-13
	-14			8	-10	-16

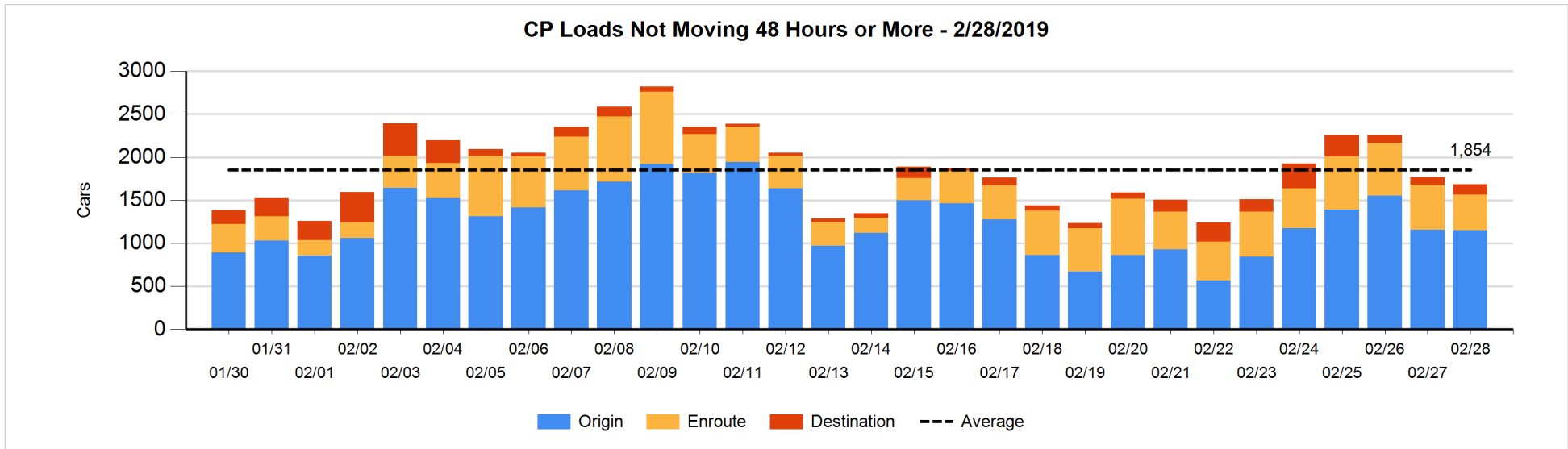
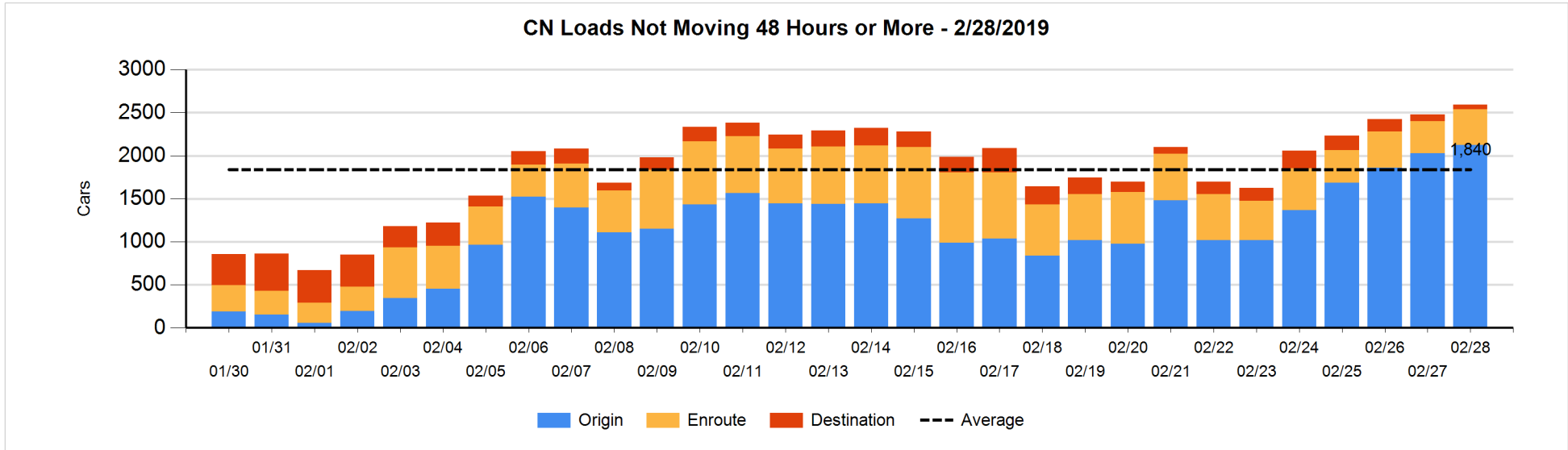


**Loads Not Moving 48 Hours or More - 2/28/2019**

	E Canada	Prince Rupert	Thunder Bay	USA/MEX	Vancouver	Total
<b>CN</b>						
Origin	100	885		59	1082	2126
Enroute	143	72		83	112	410
Destination	25		1		33	59
	268	957	1	142	1227	2595
<b>CP</b>						
Origin	170		56	8	916	1150
Enroute	97			93	228	418
Destination	14		6		99	119
	281		62	101	1243	1687
<b>US Rail / Short Line</b>						
Origin						
Enroute				39		39
Destination	6			13	29	48
	6			52	29	87

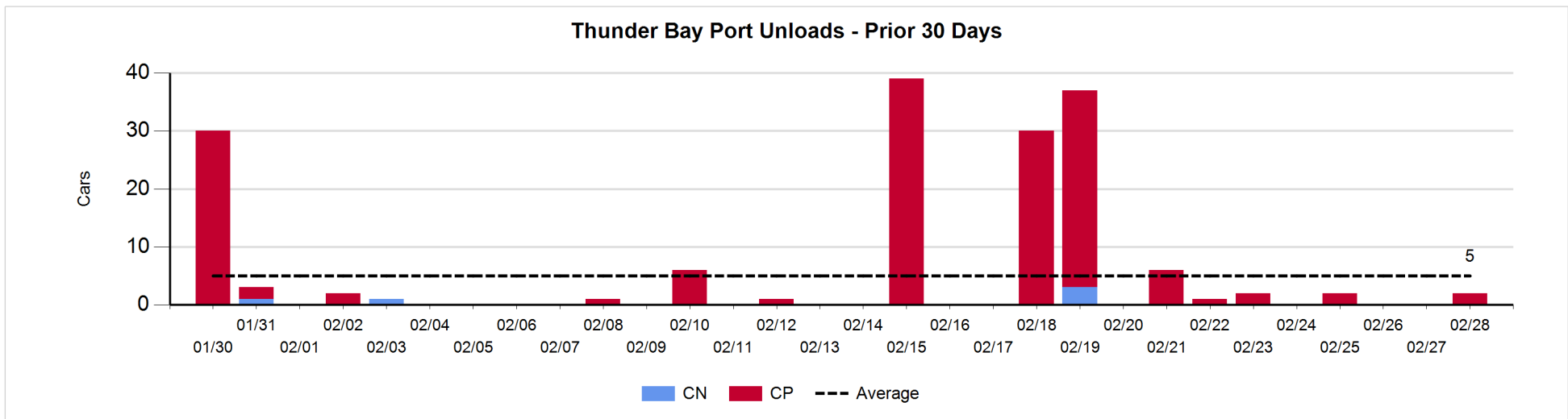
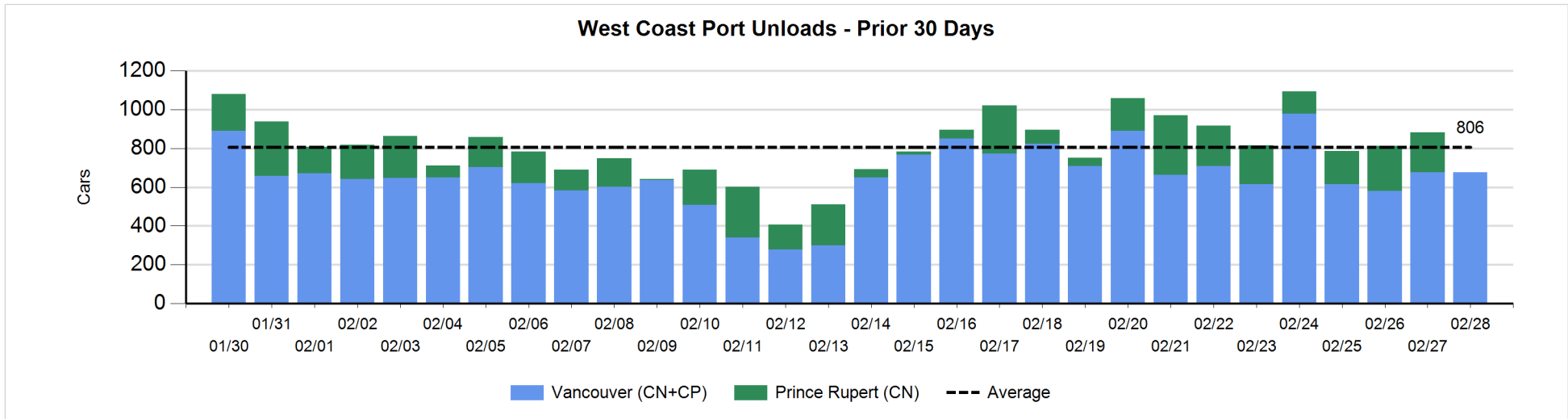
**Change in Loads Not Moving 48 Hours or More - 2/28/2019**

	E Canada	Prince Rupert	Thunder Bay	USA/MEX	Vancouver	Total
<b>CN</b>						
Origin	1	110		25	-37	99
Enroute	-17	-9		11	53	38
Destination	-9		1		-14	-22
	-25	101	1	36	2	115
<b>CP</b>						
Origin	-57		56	-21	16	-6
Enroute	27			-124	-9	-106
Destination	0		0		28	28
	-30		56	-145	35	-84
<b>US Rail / Short Line</b>						
Origin						
Enroute				-7		-7
Destination	0			5	8	13
	0			-2	8	6



Port Unloads - 2/28/2019

	Prince Rupert	Vancouver	West Coast Total	Thunder Bay	Total
CN		407	407		407
CP		269	269	2	271
		676	676	2	678





**Port Terminal Status**

**Vancouver**

Daily Activity for 2/28/2019

	Cars Arrived	Cars Received in Interchange	Cars Delivered in Interchange	Cars Placed for Unloading	Loads on Wheels at Destination As of 2/28/2019
CN	489	117	100	398	497
CP	348	100	117	236	289
SRY				14	52

**Port Unloads**

	02/28	02/27	Week To Date	Last Week
CN	407	383	1,231	2,673
CP	269	293	1,316	2,710
SRY	15	13	38	68

**Age Profile of Loaded Cars Waiting Placement for Unloading**

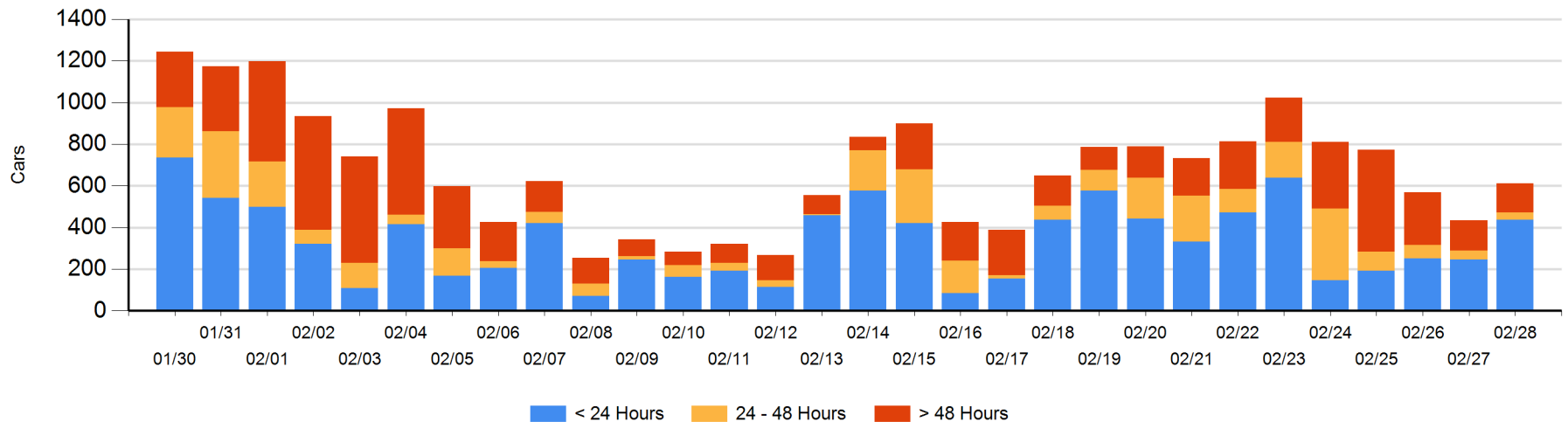
**Today**

	< 24 Hrs	24 - 48 Hrs	> 48-72 Hrs	> 72 Hrs	Total On Hand
CN	198	1	3	15	217
CP	238	35	38	84	395
SRY					0

**Change in Last 24 Hours**

	< 24 Hrs	24-48 Hrs	48 - 72 Hrs	> 72 Hrs
CN	197	-2	3	-26
CP	-5	-3	25	-8
SRY	-3			

**Loaded Cars on Hand Vancouver Waiting for Placement - Last 30 Days All Railways**



**Port Terminal Status**

**Prince Rupert**

Daily Activity for 2/28/2019

	Cars Arrived	Cars Received in Interchange	Cars Delivered in Interchange	Cars Placed for Unloading	Loads on Wheels at Destination As of 2/28/2019
CN		1			1

**Port Unloads**

	02/28	02/27	Week To Date	Last Week
CN		207	611	1,116

**Age Profile of Loaded Cars Waiting Placement for Unloading**

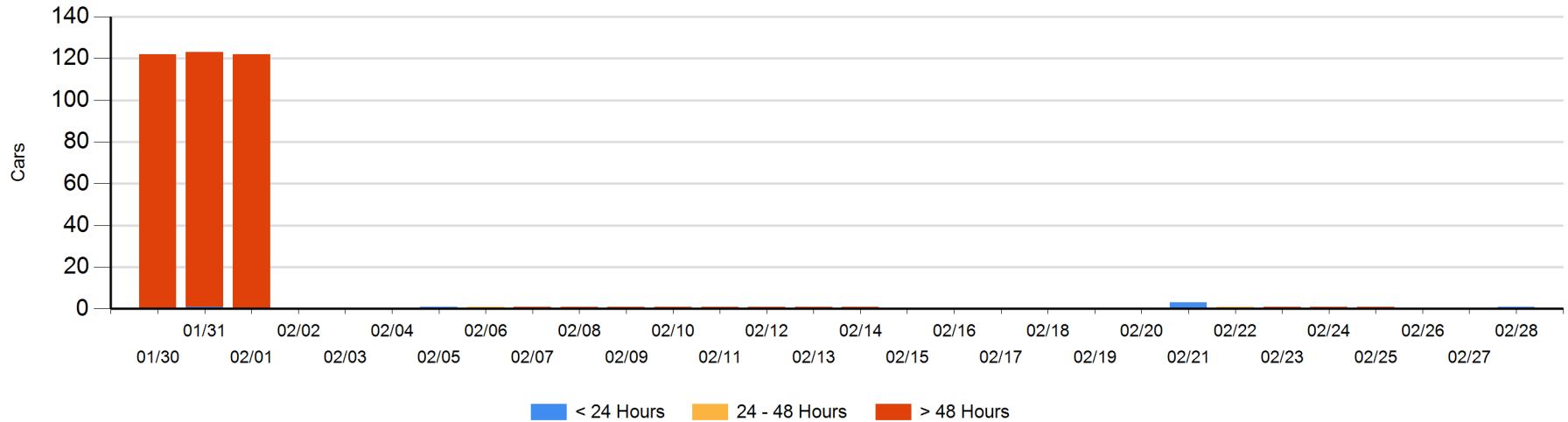
**Today**

	< 24 Hrs	24 - 48 Hrs	> 48-72 Hrs	> 72 Hrs	Total On Hand
CN	1				1

**Change in Last 24 Hours**

	< 24 Hrs	24-48 Hrs	48 - 72 Hrs	> 72 Hrs
CN	1			

Loaded Cars on Hand Prince Rupert Waiting for Placement - Last 30 Days All Railways



**Port Terminal Status**

**Thunder Bay**

Daily Activity for 2/28/2019

	Cars Arrived	Cars Received in Interchange	Cars Delivered in Interchange	Cars Placed for Unloading	Loads on Wheels at Destination As of 2/28/2019
CN					5
CP					6

**Port Unloads**

	02/28	02/27	Week To Date	Last Week
CN				3
CP	2		4	73

**Age Profile of Loaded Cars Waiting Placement for Unloading**

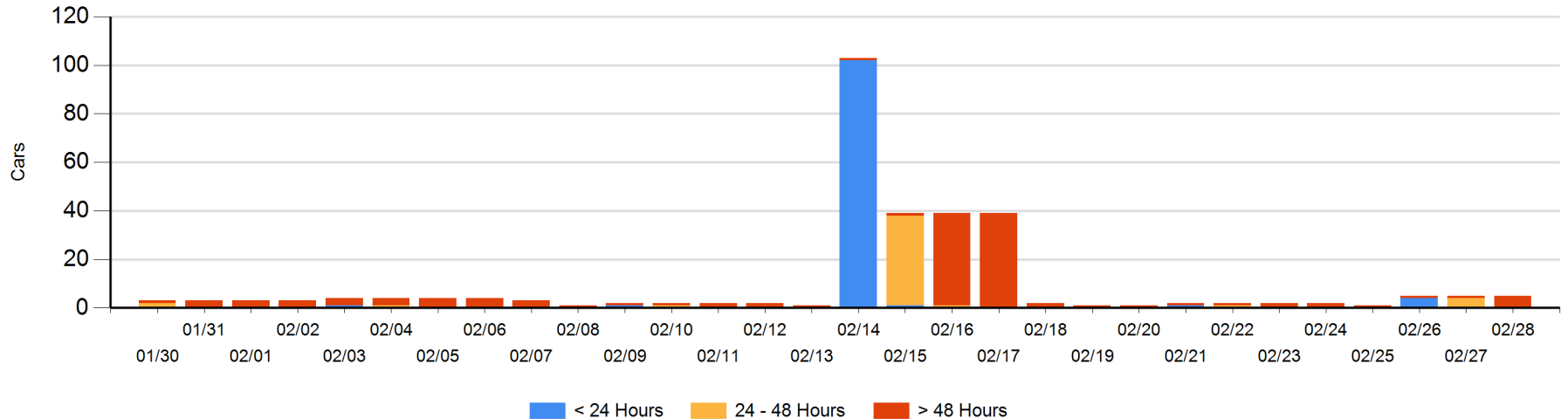
**Today**

	< 24 Hrs	24 - 48 Hrs	> 48-72 Hrs	> 72 Hrs	Total On Hand
CN			4		4
CP				1	1

**Change in Last 24 Hours**

	< 24 Hrs	24-48 Hrs	48 - 72 Hrs	> 72 Hrs
CN		-4	4	
CP				0

Loaded Cars on Hand Thunder Bay Waiting for Placement - Last 30 Days All Railways



## Measurement Definitions

Loads on Wheels	<p>Count of loaded rail cars including all rail cars that have been released loaded at origin and have not been reported by the railway as unloaded at destination.</p> <p>Counts include all rail cars (hopper cars and boxcars) moving within a pipeline.</p>
Loads Not Moving	<p>Loaded rail cars for which the railways have not reported a movement event for 48 hours or more whether the rail car is at origin, enroute or at destination.</p>
Port Unloads	<p>Count of rail cars reported by railways as unloaded at the western port destinations of Vancouver, Prince Rupert and Thunder Bay.</p> <p>Unload counts include all rail cars (hopper cars and boxcars) unloaded by all receivers including major port terminals, transloaders and other receivers.</p>
Cars Arrived	<p>Count of rail cars reported as arrived at the destination railway terminal.</p>
Cars Received in Interchange	<p>Count of rail cars received in interchange by each railway within a destination railway terminal. Interchange activity is tracked for the Vancouver and Thunder Bay pipelines as applicable.</p>
Cars Delivered in Interchange	<p>Count of rail cars delivered in interchange by each railway within a destination railway terminal. Interchange activity is tracked for the Vancouver and Thunder Bay pipelines as applicable.</p>
Cars Placed for Unloading	<p>Count of rail cars reported by the railways as placed loaded at the receiver's facility for unloading.</p>
Loads on Wheels at Destination	<p>Count of rail cars that remain under load within the destination railway terminal including rail cars that have been reported as placed for unloading but not yet reported as unloaded.</p>
Waiting Placement for Unloading	<p>Count of rail cars that have been reported as arrived at the destination railway terminal but not reported as placed for unloading by the railway.</p> <p>For the Ports of Vancouver, Prince Rupert and Thunder Bay the count of rail cars waiting placement for unloading is categorized by age – i.e. the elapsed time from arrival at destination to the current report date.</p>