

## SPEED READ

- Loads on wheels decreased marginally overnight, reflecting a decline in CN volumes offset by higher CP volumes. On a net basis, volumes fell due to lower traffic across all corridors other than USA/MEX.
- Network fluidity deteriorated overnight, led by an increase in idle car counts on both CN and CP by 22% (+456) and 20% (+421), respectively. The total count of cars for 4+ days on both railways increased significantly by 68% (+1,077) overnight - currently at 2,652 cars, the highest seen in the last 30 days.
- Two days in Week 23 unloads now ahead of prior week's performance by more than 100 unloads, marking improved week over week performance at Thunder Bay and Vancouver offset by reduced unloads at Prince Rupert.

---

## Loads on Wheels

- Loads on wheels declined slightly (-55) overnight, due to reduced traffic on CN offset by higher volumes on CP - combined total at 11,550 and 3% below the trailing 30-day average.
- On a net basis, the decline in loads on wheels indicates reduced traffic across all corridors other than USA/MEX.
- CN volumes fell 3% (-186) overnight, with reduced traffic across Vancouver, USA/MEX and Prince Rupert corridors. System wide CN loads on wheels currently at 6,235 and 2% below the trailing 30-day average.
- CP volumes gained 3% (+129) overnight, driven by an increase in volumes in the Vancouver and USA/MEX corridors offset by a decline in traffic in the Thunder Bay and E. Canada corridors. CP system wide loads on wheels currently at 5,036 and 6% below the trailing 30-day average.
- Vancouver currently at 7,079, fell slightly (-9) overnight, now 3% below the trailing 30-day average.
- The Prince Rupert pipeline currently at 1,844, was largely unchanged (-1) overnight, and 13% above the trailing 30-day average.
- Thunder Bay volumes declined 4% (-43) overnight and have now decreased for the fourth consecutive day - currently at 1,141, the lowest seen in the last 30 days, and 35% below the trailing 30-day average, with 73% of traffic moving on CP.

## Hopper Car Rationing

- CN rationed 234 hopper cars in week 20.

## Loads Not Moving

- **The count of cars not moving for 48+ hours increased for the fourth consecutive day, up 21% (+877) overnight, marking higher counts on both CN and CP. Idle car counts currently at 5,092 and 45% above the trailing 30-day average.**
- CN
  - **The count of idle cars for 48+ hours rose for the third consecutive day, up 22% (+456) overnight - currently at 2,553 cars, the highest seen in the last 30 days.**
  - The number of cars idle for 4+ days surged by 127% (+742) overnight - now at 1,324 cars.
  - The count of cars not moving for 7+ days fell 6% (-10) overnight - currently at 149 cars.
  - Vancouver represents 61% of all idle cars.
  - In total 46% of all idle cars are dwelling at origin locations.
- CP
  - **CP idle car counts for 48+ hours increased 20% (+421) overnight - currently at 2,539 cars.**
  - The number of cars idle for 4+ days gained 34% (+335) overnight - now at 1,328 cars.
  - The number of cars idle for 7+ days decreased 23% (-79) overnight - currently at 269 cars.

- Vancouver accounts for 63% of all idle cars.
- In total 52% of all idle cars are dwelling at origin locations.

### **Port Performance**

- CN and CP reported a total of 54 cars unloaded at the three major ports, now 95% below the trailing 30 day-average. Two days in Week 23 unloads now ahead of last week's pace by more than 100 unloads, marking higher unloads at Thunder Bay and Vancouver offset by lower unloads at Prince Rupert.
- Vancouver
  - 10 unloads, the lowest seen in the last 30 days, was reported by CN and CP at the Port of Vancouver; CN - 6 and CP - 4. Two days in Week 23 unloads are tracking ahead of last week's performance by 6 unloads.
  - There are more than 2,050 cars on site at Vancouver with 350 cars arriving at the port in the last 24 hours.
  - CN and CP have more than 1,500 cars in British Columbia en route to Vancouver, with more than 550 cars at Kamloops and west, and 74% of traffic moving on CN.
- Prince Rupert
  - Prince Rupert reported 1 unload, now behind last week's unloads after two days by nearly 100 unloads.
  - Loads on wheels now above 1,000 cars - currently at 1,844 cars.
  - There are less than 700 cars west of Jasper en route to Prince Rupert.
  - There are 550 cars on site at Prince Rupert with 300 cars arriving at the port in the last 24 hours. Given the structure of the pipeline, there appears to be sufficient cars available to support unloads in the next few days.
- Thunder Bay
  - 43 unloads were reported at Thunder Bay yesterday. Two days in Week 23 unloads are tracking ahead of last week's pace by less than 200 unloads.
  - There are 900 cars on site at Thunder Bay with fewer than 150 cars arriving at the port in the prior 24 hours.
  - There are nearly 200 cars en route to Thunder Bay from Winnipeg and east. Cars on hand and those en route should support unloads in the next few days.

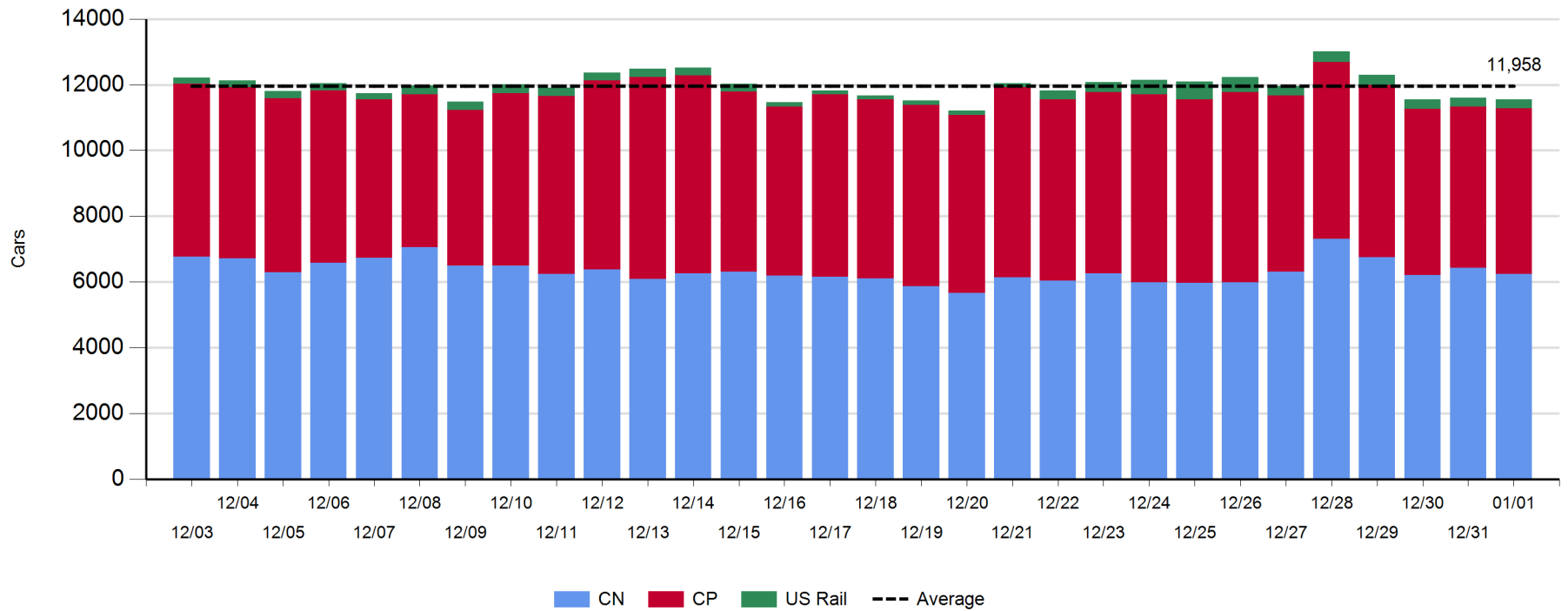
**Daily Loads on Wheels - 1/1/2019**

	E Canada	Prince Rupert	Thunder Bay	USA/MEX	Vancouver	Total
CN	470	1,844	304	154	3,463	6,235
CP	358		837	283	3,558	5,036
Short Line	3				58	61
US Rail				218		218
	831	1,844	1,141	655	7,079	11,550

**Change in Loads on Wheels - Prior 24 Hours**

	E Canada	Prince Rupert	Thunder Bay	USA/MEX	Vancouver	Total
CN	0	-1	0	-3	-182	-186
CP	-6		-43	5	173	129
Short Line	0				0	0
US Rail				2		2
	-6	-1	-43	4	-9	-55

**Loads on Wheels - Prior 30 Days**

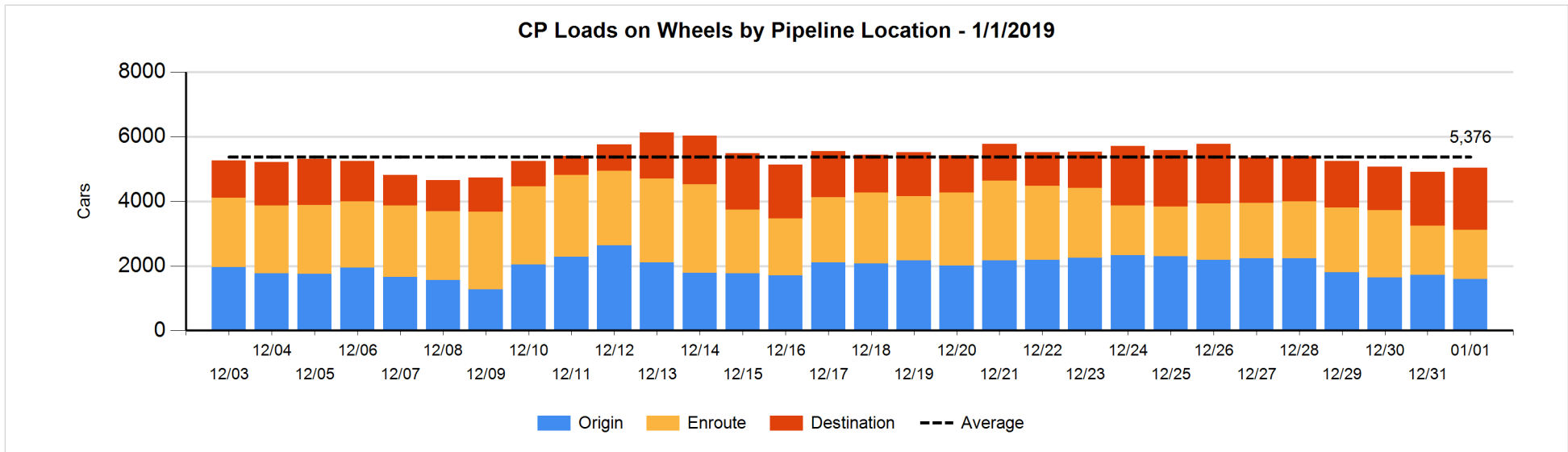
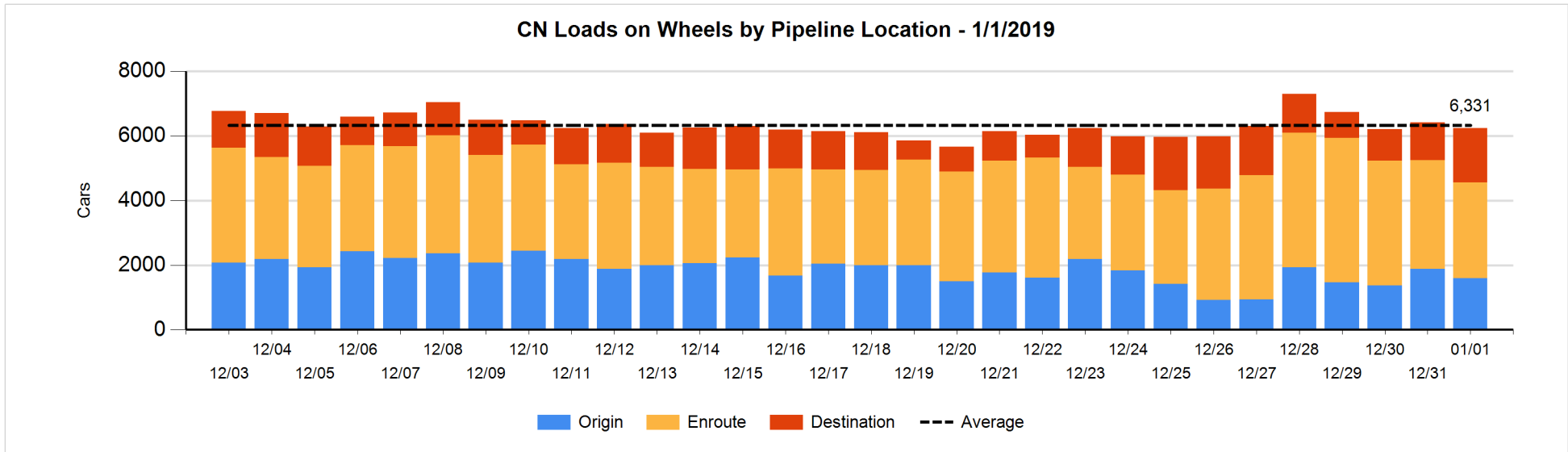


**Daily Loads on Wheels By Pipeline Location - 1/1/2019**

	E Canada	Prince Rupert	Thunder Bay	USA/MEX	Vancouver	Total
CN						
Origin	2	563		1	1,026	1,592
Enroute	380	723	12	116	1,735	2,966
Destination	88	558	292	37	702	1,677
	470	1,844	304	154	3,463	6,235
CP						
Origin	223		56	3	1,313	1,595
Enroute	135		175	275	939	1,524
Destination			606	5	1,306	1,917
	358		837	283	3,558	5,036
US Rail / Short Line						
Origin						
Enroute				155		155
Destination	3			63	58	124
	3			218	58	279

**Change in Daily Loads on Wheels By Pipeline Location - Prior 24 Hours**

	E Canada	Prince Rupert	Thunder Bay	USA/MEX	Vancouver	Total
CN						
Origin	-6	-13	-4	-3	-259	-285
Enroute	-47	-282	-129	4	45	-409
Destination	53	294	133	-4	32	508
	0	-1	0	-3	-182	-186
CP						
Origin	1		0	0	-121	-120
Enroute	-7		0	5	-8	-10
Destination			-43	0	302	259
	-6		-43	5	173	129
US Rail / Short Line						
Origin						
Enroute				-12		-12
Destination	0			14	0	14
	0			2	0	2

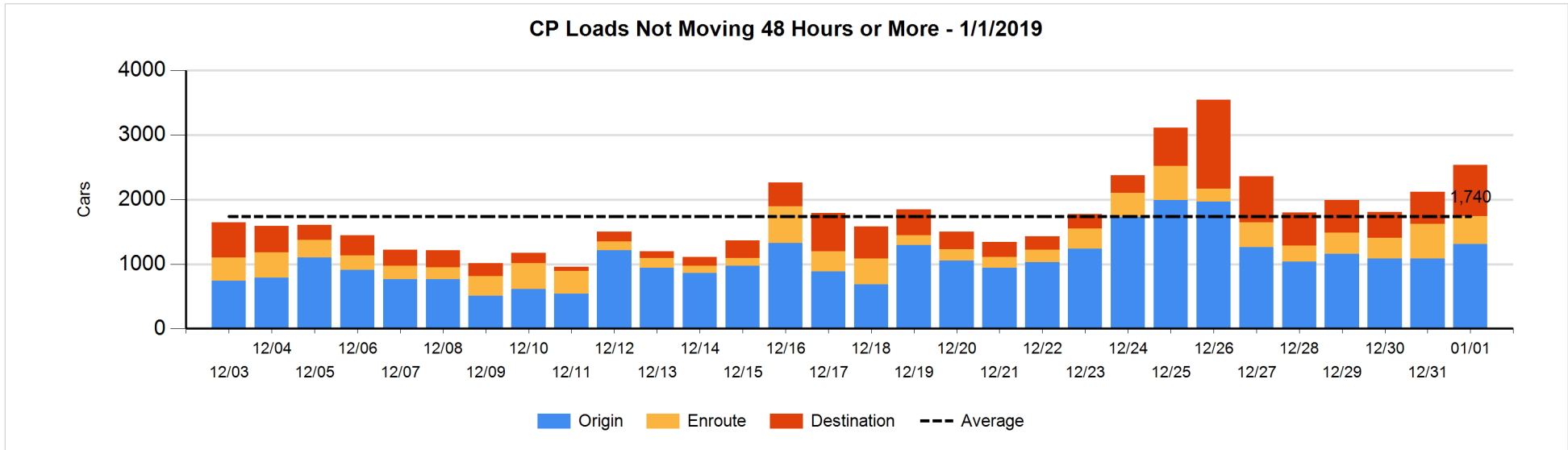
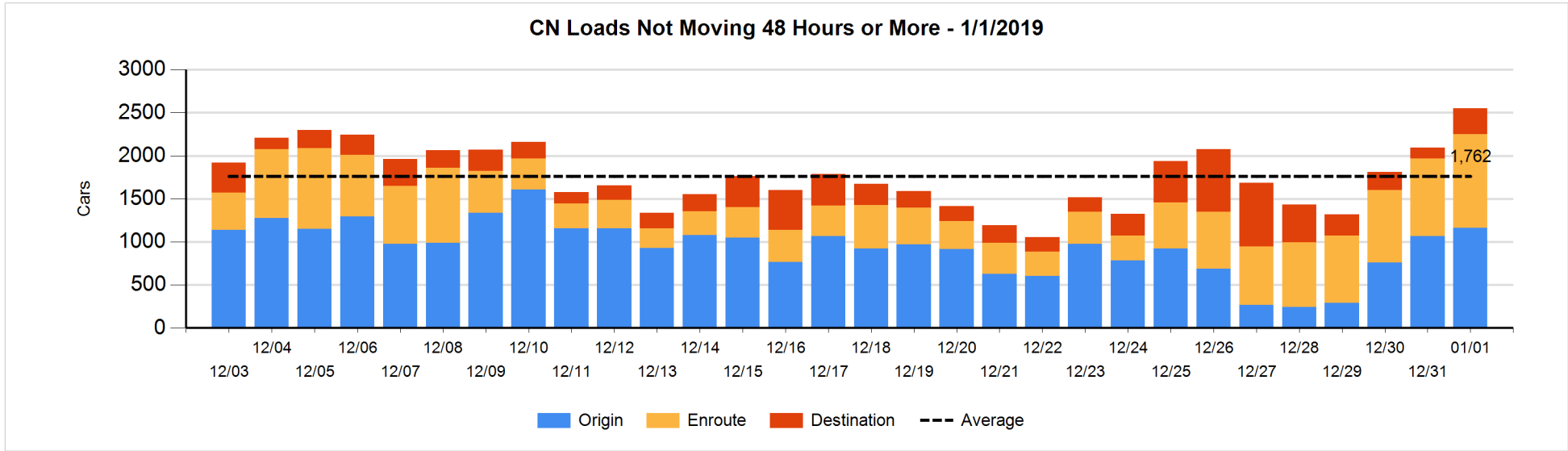


**Loads Not Moving 48 Hours or More - 1/1/2019**

	E Canada	Prince Rupert	Thunder Bay	USA/MEX	Vancouver	Total
CN						
Origin	2	358			803	1163
Enroute	6	517	3	6	556	1088
Destination	19	1	59	21	202	302
	27	876	62	27	1561	2553
CP						
Origin	110		1		1198	1309
Enroute	11		125	105	194	435
Destination			599	1	195	795
	121		725	106	1587	2539
US Rail / Short Line						
Origin						
Enroute				69		69
Destination	3			44	34	81
	3			113	34	150

**Change in Loads Not Moving 48 Hours or More - 1/1/2019**

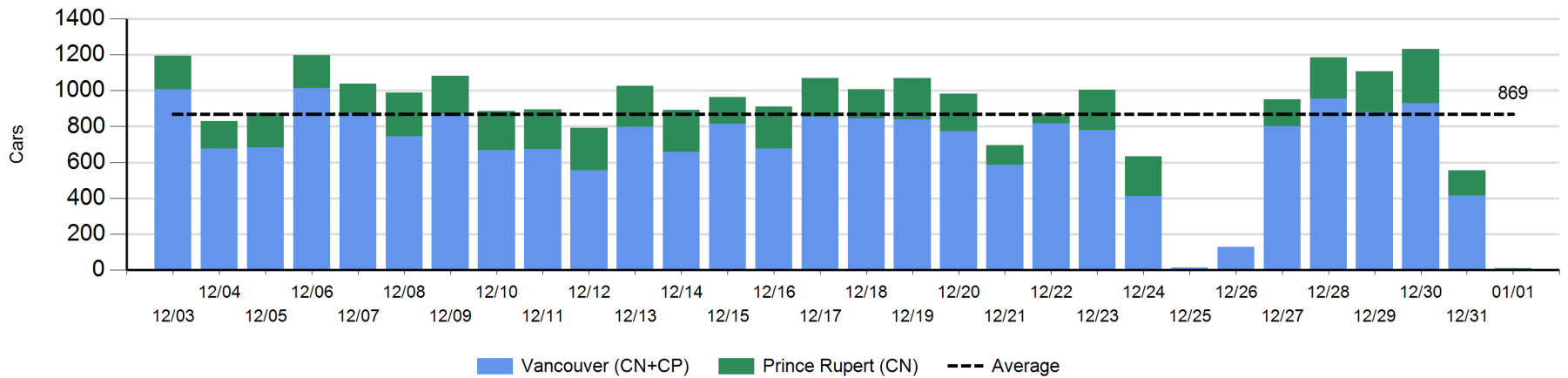
	E Canada	Prince Rupert	Thunder Bay	USA/MEX	Vancouver	Total
CN						
Origin	-6	-6			107	95
Enroute	-7	-12	0	-2	210	189
Destination	8	-1	38	-4	131	172
	-5	-19	38	-6	448	456
CP						
Origin	110		0	-1	111	220
Enroute	-117		6	31	-21	-101
Destination			134	0	168	302
	-7		140	30	258	421
US Rail / Short Line						
Origin						
Enroute				27		27
Destination	0			1	0	1
	0			28	0	28



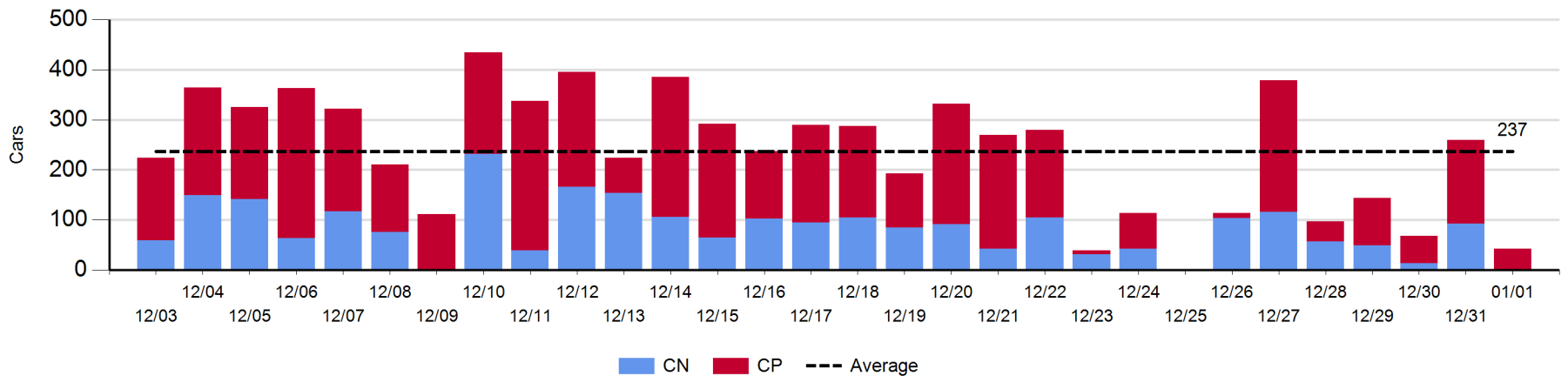
Port Unloads - 1/1/2019

	Prince Rupert	Vancouver	West Coast Total	Thunder Bay	Total
CN	1	6	7		7
CP		4	4	43	47
	1	10	11	43	54

West Coast Port Unloads - Prior 30 Days



Thunder Bay Port Unloads - Prior 30 Days





**Port Terminal Status**

**Vancouver**

Daily Activity for 1/1/2019

	Cars Arrived	Cars Received in Interchange	Cars Delivered in Interchange	Cars Placed for Unloading	Loads on Wheels at Destination As of 1/1/2019
CN	116	2	189	137	702
CP	228	189	2		1,306
SRY					58

**Port Unloads**

	01/01	12/31	Week To Date	Last Week
CN	6	225	231	2,036
CP	4	190	194	2,081
SRY		15	15	37

**Age Profile of Loaded Cars Waiting Placement for Unloading**

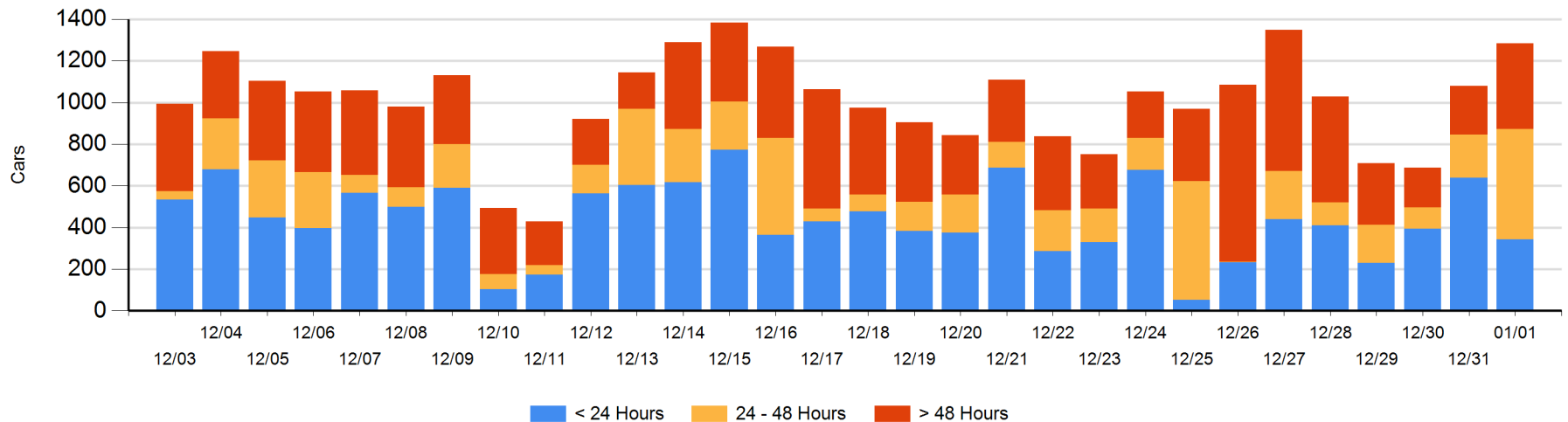
**Today**

	< 24 Hrs	24 - 48 Hrs	> 48-72 Hrs	> 72 Hrs	Total On Hand
CN	116	109	105	58	388
CP	228	419	80	170	897
SRY					0

**Change in Last 24 Hours**

	< 24 Hrs	24-48 Hrs	48 - 72 Hrs	> 72 Hrs
CN	7	-17	102	0
CP	-303	339	-18	94
SRY				

**Loaded Cars on Hand Vancouver Waiting for Placement - Last 30 Days All Railways**



**Port Terminal Status**

**Prince Rupert**

Daily Activity for 1/1/2019

	Cars Arrived	Cars Received in Interchange	Cars Delivered in Interchange	Cars Placed for Unloading	Loads on Wheels at Destination As of 1/1/2019
CN	295			295	558

**Port Unloads**

	01/01	12/31	Week To Date	Last Week
CN	1	140	141	1,131

**Age Profile of Loaded Cars Waiting Placement for Unloading**

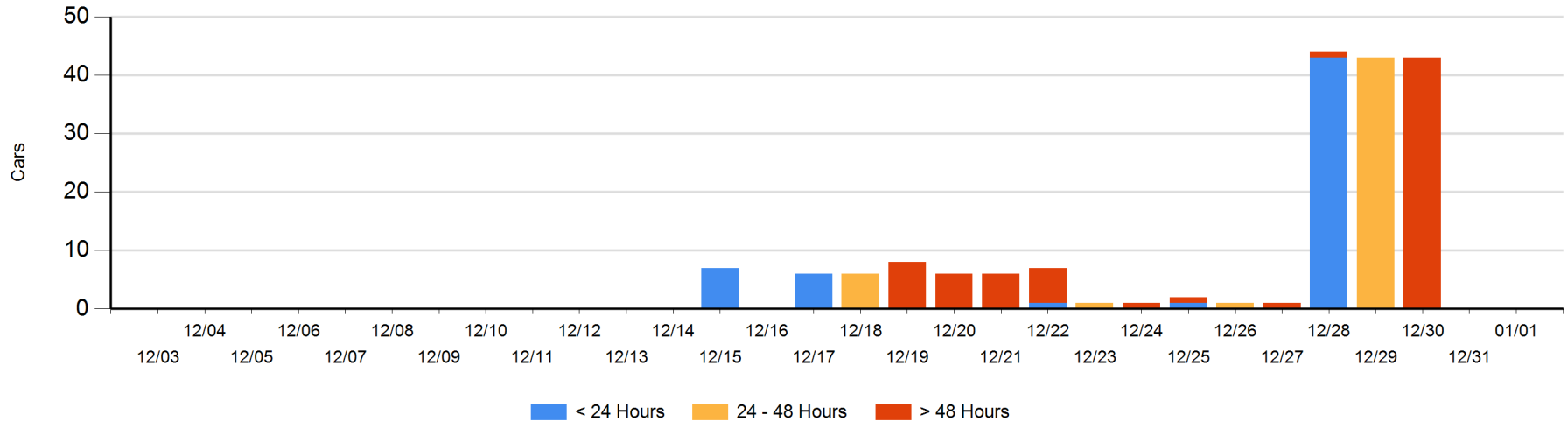
**Today**

	< 24 Hrs	24 - 48 Hrs	> 48-72 Hrs	> 72 Hrs	Total On Hand
CN					0

**Change in Last 24 Hours**

	< 24 Hrs	24-48 Hrs	48 - 72 Hrs	> 72 Hrs
CN				

Loaded Cars on Hand Prince Rupert Waiting for Placement - Last 30 Days All Railways



**Port Terminal Status**

**Thunder Bay**

Daily Activity for 1/1/2019

	Cars Arrived	Cars Received in Interchange	Cars Delivered in Interchange	Cars Placed for Unloading	Loads on Wheels at Destination As of 1/1/2019
CN	133			50	292
CP				40	606

**Port Unloads**

	01/01	12/31	Week To Date	Last Week
CN		93	93	384
CP	43	166	209	533

**Age Profile of Loaded Cars Waiting Placement for Unloading**

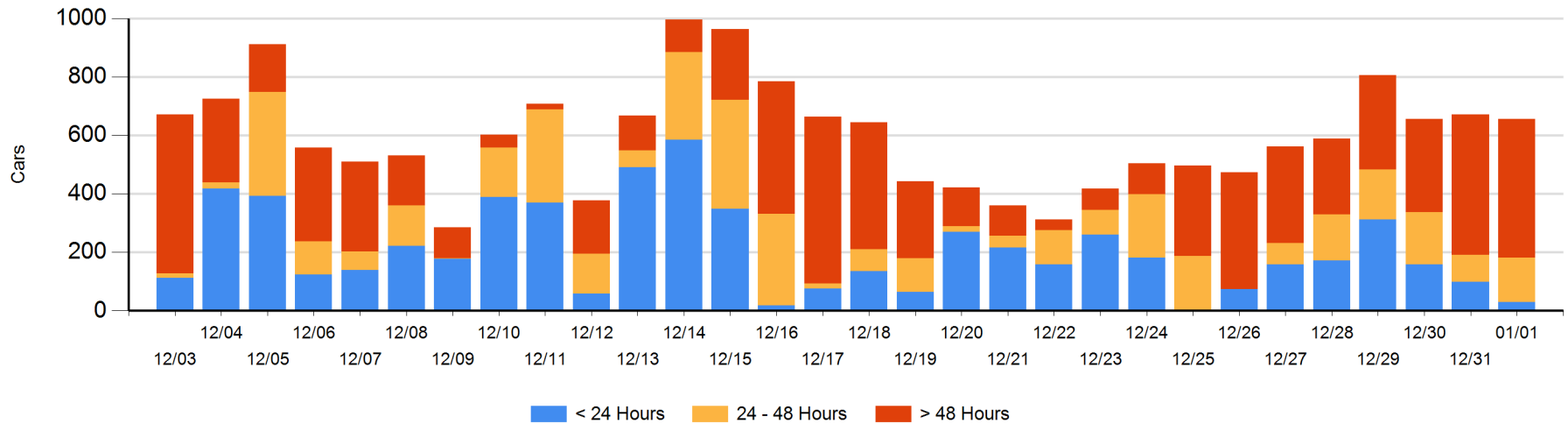
**Today**

	< 24 Hrs	24 - 48 Hrs	> 48-72 Hrs	> 72 Hrs	Total On Hand
CN	30	152		7	189
CP			55	413	468

**Change in Last 24 Hours**

	< 24 Hrs	24-48 Hrs	48 - 72 Hrs	> 72 Hrs
CN	-69	152	-6	5
CP		-93	-105	102

**Loaded Cars on Hand Thunder Bay Waiting for Placement - Last 30 Days All Railways**



## Measurement Definitions

Loads on Wheels	<p>Count of loaded rail cars including all rail cars that have been released loaded at origin and have not been reported by the railway as unloaded at destination.</p> <p>Counts include all rail cars (hopper cars and boxcars) moving within a pipeline.</p>
Loads Not Moving	<p>Loaded rail cars for which the railways have not reported a movement event for 48 hours or more whether the rail car is at origin, enroute or at destination.</p>
Port Unloads	<p>Count of rail cars reported by railways as unloaded at the western port destinations of Vancouver, Prince Rupert and Thunder Bay.</p> <p>Unload counts include all rail cars (hopper cars and boxcars) unloaded by all receivers including major port terminals, transloaders and other receivers.</p>
Cars Arrived	<p>Count of rail cars reported as arrived at the destination railway terminal.</p>
Cars Received in Interchange	<p>Count of rail cars received in interchange by each railway within a destination railway terminal. Interchange activity is tracked for the Vancouver and Thunder Bay pipelines as applicable.</p>
Cars Delivered in Interchange	<p>Count of rail cars delivered in interchange by each railway within a destination railway terminal. Interchange activity is tracked for the Vancouver and Thunder Bay pipelines as applicable.</p>
Cars Placed for Unloading	<p>Count of rail cars reported by the railways as placed loaded at the receiver's facility for unloading.</p>
Loads on Wheels at Destination	<p>Count of rail cars that remain under load within the destination railway terminal including rail cars that have been reported as placed for unloading but not yet reported as unloaded.</p>
Waiting Placement for Unloading	<p>Count of rail cars that have been reported as arrived at the destination railway terminal but not reported as placed for unloading by the railway.</p> <p>For the Ports of Vancouver, Prince Rupert and Thunder Bay the count of rail cars waiting placement for unloading is categorized by age – i.e. the elapsed time from arrival at destination to the current report date.</p>