

## SPEED READ

- Loads on wheels decreased slightly overnight, marking reduced CP traffic offset by a rise in CN volumes. On a net basis, volumes decreased due to reduced volumes across all corridors other than E. Canada.
- Network fluidity deteriorated overnight, led by a rise in idle car counts on CN by 84% (+301) offset by a decline in idle car counts on CP by 1% (-15). The total count of cars for 4+ days on both railways decreased 10% (-53) overnight and have now decreased for the third consecutive day - now at 500 cars, the lowest seen in the last 30 days.
- Two days in Week 25 unloads now behind prior week's performance by more than 100 unloads, marking reduced unloads at Prince Rupert and Thunder Bay offset by improved week over week performance at Vancouver.

---

## Loads on Wheels

- Loads on wheels decreased slightly by 2% (-197) overnight, due to reduced volumes on CP offset by higher traffic on CN - combined total at 9,920 and 13% below the trailing 30-day average.
- On a net basis, the decline in loads on wheels reflects reduced volumes across all corridors other than E. Canada.
- CN volumes increased 3% (+140) overnight, with higher volumes in the Vancouver corridor offset by reduced traffic in the Prince Rupert, Thunder Bay, E. Canada and USA/MEX corridors. System wide CN loads on wheels presently at 5,472 and 7% below the trailing 30-day average.
- CP volumes declined 7% (-323) overnight, driven by a decline in traffic across all corridors other than E. Canada. CP system wide loads on wheels currently at 4,228, the lowest seen in the last 30 days, and 19% below the trailing 30-day average.
- Vancouver now at 6,565, declined slightly by 1% (-40) overnight, now 7% below the trailing 30-day average.
- The Prince Rupert pipeline presently at 1,207, declined 4% (-54) overnight, and 26% below the trailing 30 day-average.
- Thunder Bay volumes decreased significantly by 23% (-92) overnight - currently at 314, the lowest seen in the last 30 days, and 71% below the trailing 30-day average, with 69% of traffic moving on CP.

## Hopper Car Rationing

- No hopper car rationing was reported for either CN or CP in week 23.

## Loads Not Moving

- **The count of cars not moving for 48+ hours rose 21% (+286) overnight, marking higher counts on CN offset by reduced counts on CP. Idle car counts presently at 1,671 and 48% below the trailing 30 day-average.**
- CN
  - **The count of idle cars for 48+ hours increased significantly by 84% (+301) overnight - currently at 659 cars.**
  - The number of cars idle for 4+ days rose 20% (+36) overnight - now at 214 cars.
  - The count of cars not moving for 7+ days increased significantly by 45% (+20) overnight - currently at 64 cars.
  - Vancouver represents 78% of all idle cars.
  - In total 27% of all idle cars are dwelling at origin locations.
- CP
  - **CP idle car counts for 48+ hours decreased slightly by 1% (-15) overnight - currently at 1,012 cars, the lowest seen in the last 30 days.**
  - The number of cars idle for 4+ days declined 24% (-90) overnight and have now decreased for the third consecutive day - currently at 286 cars, the lowest seen in the last 30 days.

- The number of cars idle for 7+ days decreased significantly by 53% (-100) overnight - currently at 87 cars, the lowest seen in the last 30 days.
- Vancouver accounts for 80% of all idle cars.
- In total 61% of all idle cars are dwelling at origin locations.

### **Port Performance**

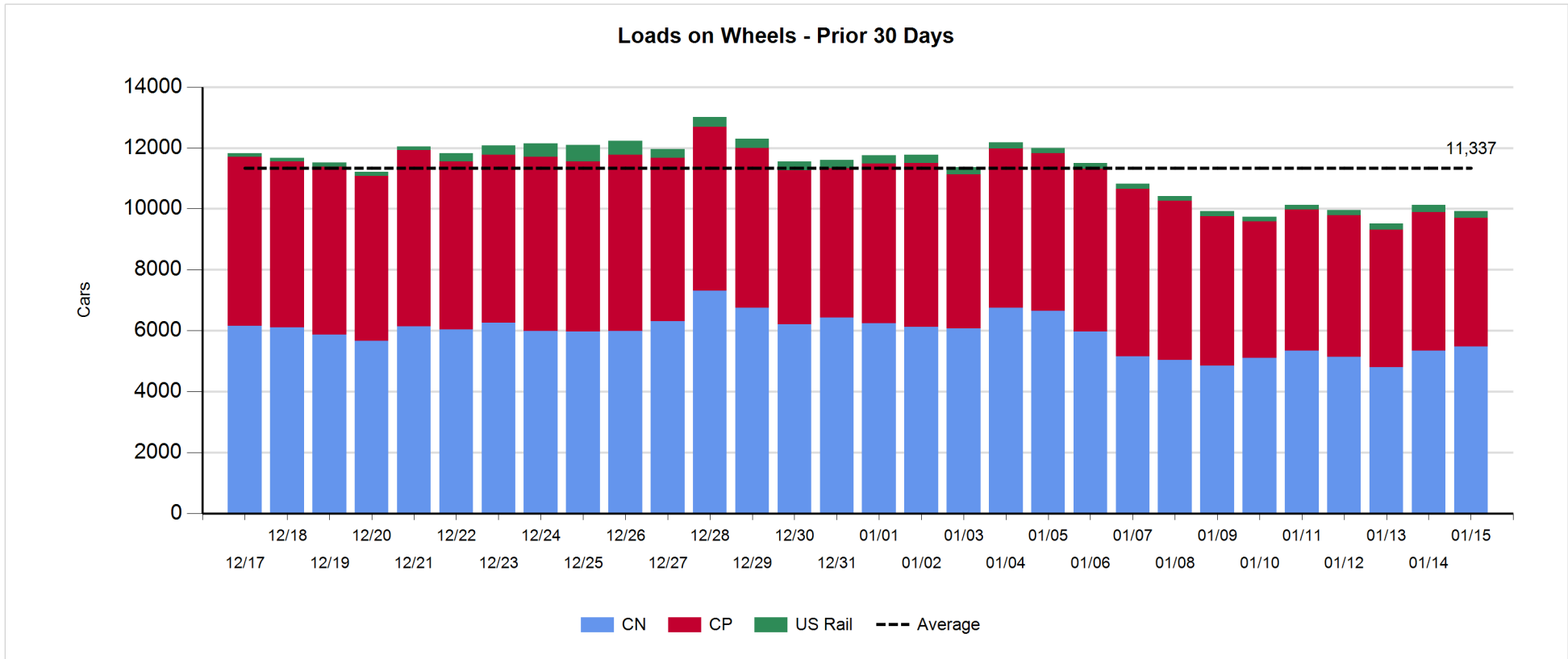
- CN and CP reported a total of 1,261 cars unloaded at the three major ports, now 18% above the trailing 30-day average. Two days in Week 25 unloads now behind last week's pace by more than 100 unloads, marking reduced unloads at Prince Rupert and Thunder Bay offset by higher unloads at Vancouver.
- Vancouver
  - 984 unloads reported by CN and CP at the Port of Vancouver; CN - 415 and CP - 569. Two days in Week 25 unloads are tracking ahead of last week's performance by around 100 unloads.
  - There are more than 1,500 cars on site at Vancouver with more than 1,200 cars arriving at the port in the last 24 hours.
  - CN and CP have 1,600 cars in British Columbia en route to Vancouver, with 900 cars at Kamloops and west, and 52% of traffic moving on CN.
- Prince Rupert
  - Prince Rupert reported 181 unloads, now behind last week's unloads after two days by more than 100 unloads.
  - Loads on wheels now above 1,000 cars - now at 1,207 cars.
  - There are 350 cars west of Jasper en route to Prince Rupert.
  - There are more than 150 cars on site at Prince Rupert with around 300 cars arriving at the port in the last 24 hours. Given the structure of the pipeline, there appears to be sufficient cars available to support unloads in the next few days.
- Thunder Bay
  - 96 unloads were reported at Thunder Bay yesterday. Two days in Week 25 unloads are tracking behind last week's pace by 100 unloads.
  - There are more than 100 cars on site at Thunder Bay with 50 cars arriving at the port in the prior 24 hours.
  - There are 50 cars en route to Thunder Bay from Winnipeg and east.

**Daily Loads on Wheels - 1/15/2019**

	E Canada	Prince Rupert	Thunder Bay	USA/MEX	Vancouver	Total
CN	745	1,207	97	239	3,184	5,472
CP	134		217	566	3,311	4,228
Short Line					69	69
US Rail				150	1	151
	879	1,207	314	955	6,565	9,920

**Change in Loads on Wheels - Prior 24 Hours**

	E Canada	Prince Rupert	Thunder Bay	USA/MEX	Vancouver	Total
CN	-46	-54	-53	-34	327	140
CP	78		-39	-2	-360	-323
Short Line					-6	-6
US Rail				-7	-1	-8
	32	-54	-92	-43	-40	-197

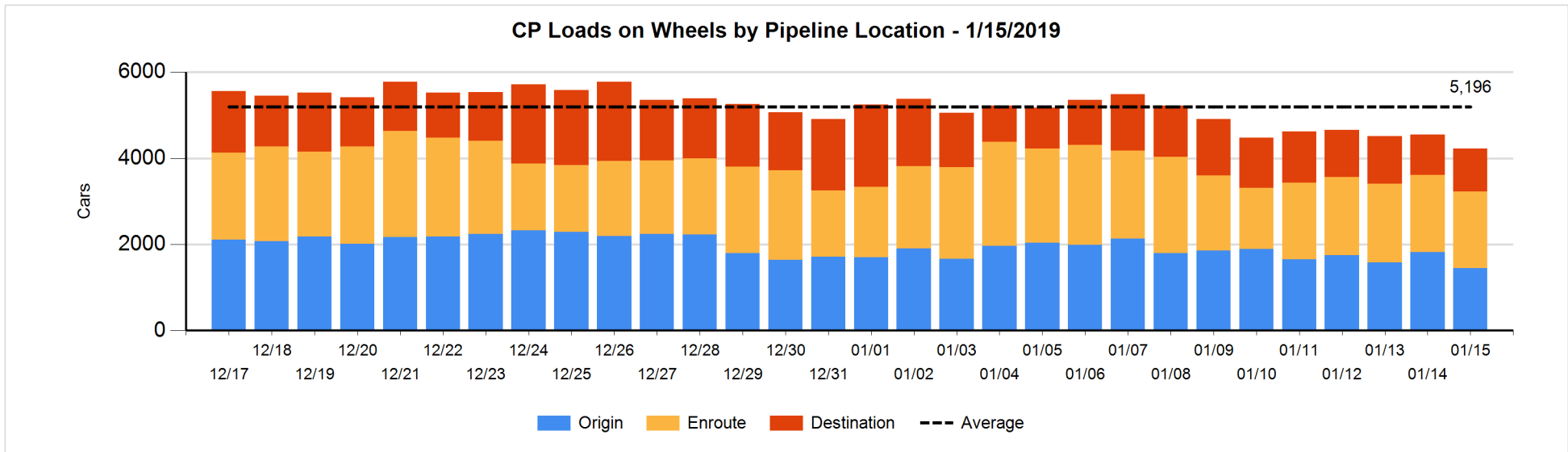
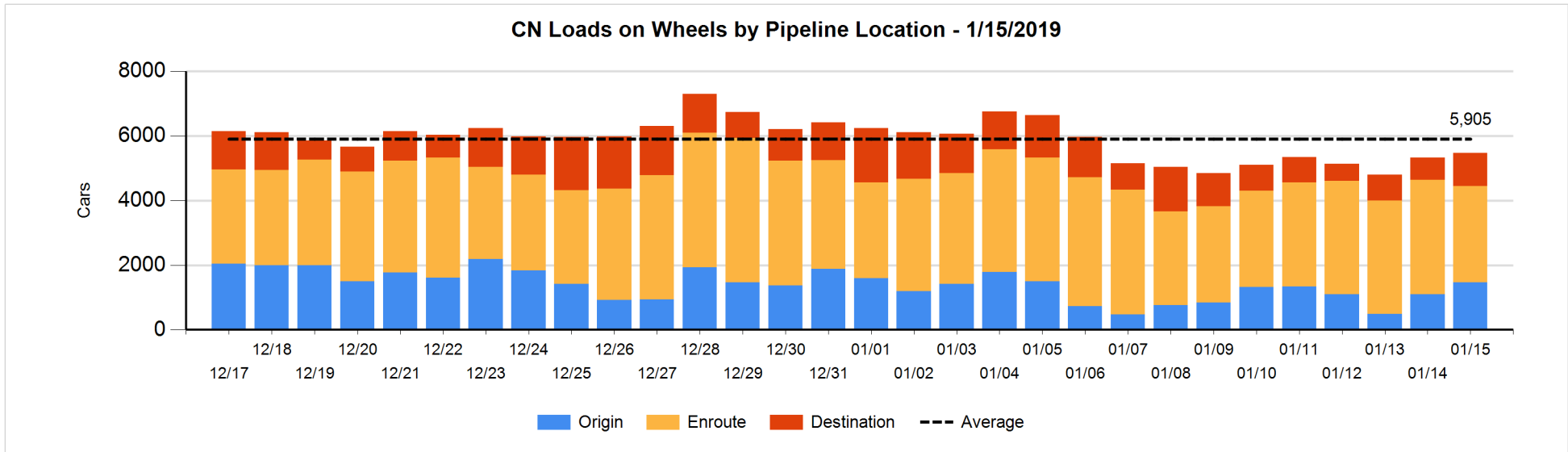


**Daily Loads on Wheels By Pipeline Location - 1/15/2019**

	E Canada	Prince Rupert	Thunder Bay	USA/MEX	Vancouver	Total
CN						
Origin	102	192		18	1,149	1,461
Enroute	438	838	52	161	1,491	2,980
Destination	205	177	45	60	544	1,031
	745	1,207	97	239	3,184	5,472
CP						
Origin	111		124	143	1,068	1,446
Enroute	15		20	404	1,336	1,775
Destination	8		73	19	907	1,007
	134		217	566	3,311	4,228
US Rail / Short Line						
Origin						
Enroute				80		80
Destination				70	70	140
				150	70	220

**Change in Daily Loads on Wheels By Pipeline Location - Prior 24 Hours**

	E Canada	Prince Rupert	Thunder Bay	USA/MEX	Vancouver	Total
CN						
Origin	-6	-172	-49	-30	618	361
Enroute	-98	10	49	-46	-471	-556
Destination	58	108	-53	42	180	335
	-46	-54	-53	-34	327	140
CP						
Origin	111		-17	-205	-264	-375
Enroute	-33		-33	215	-169	-20
Destination	0		11	-12	73	72
	78		-39	-2	-360	-323
US Rail / Short Line						
Origin						
Enroute				1		1
Destination				-8	-7	-15
				-7	-7	-14

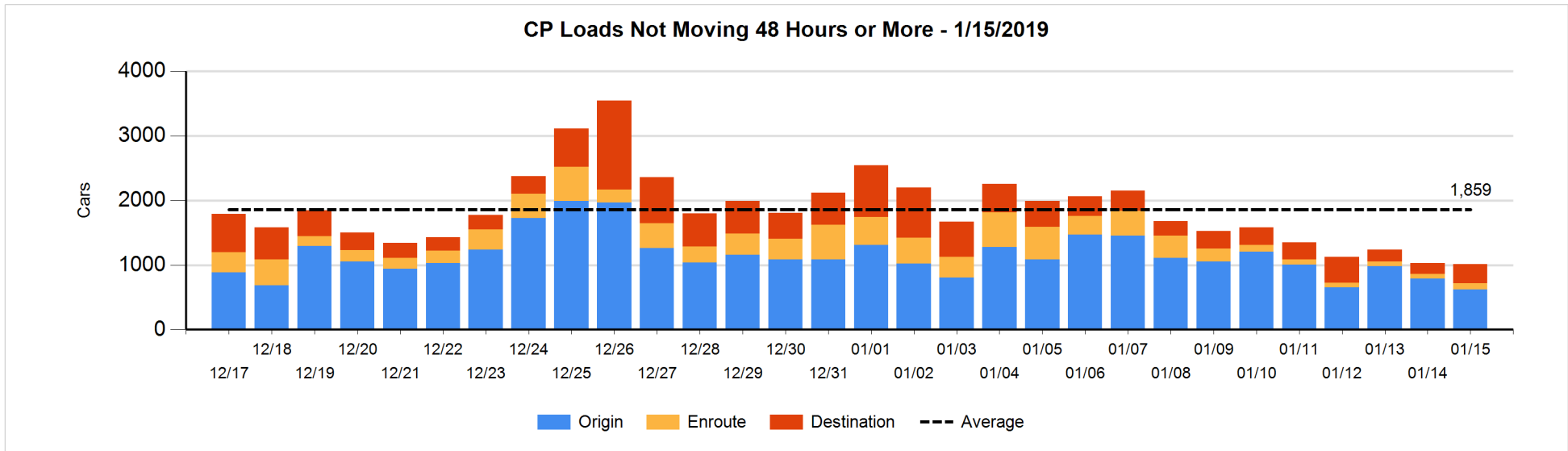
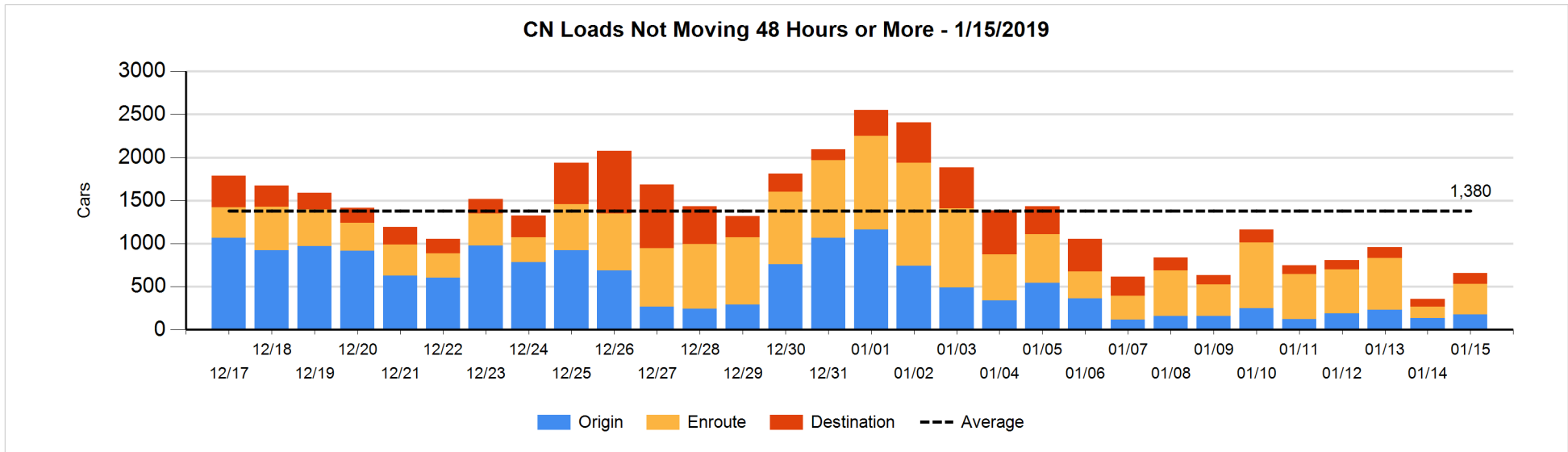


**Loads Not Moving 48 Hours or More - 1/15/2019**

	E Canada	Prince Rupert	Thunder Bay	USA/MEX	Vancouver	Total
<b>CN</b>						
Origin	2	2		7	167	178
Enroute	53	11		16	275	355
Destination	45	3	1	4	73	126
	100	16	1	27	515	659
<b>CP</b>						
Origin			1	114	507	622
Enroute	6		3	76	12	97
Destination	2		1		290	293
	8		5	190	809	1012
<b>US Rail / Short Line</b>						
Origin						
Enroute				42		42
Destination				65	3	68
				107	3	110

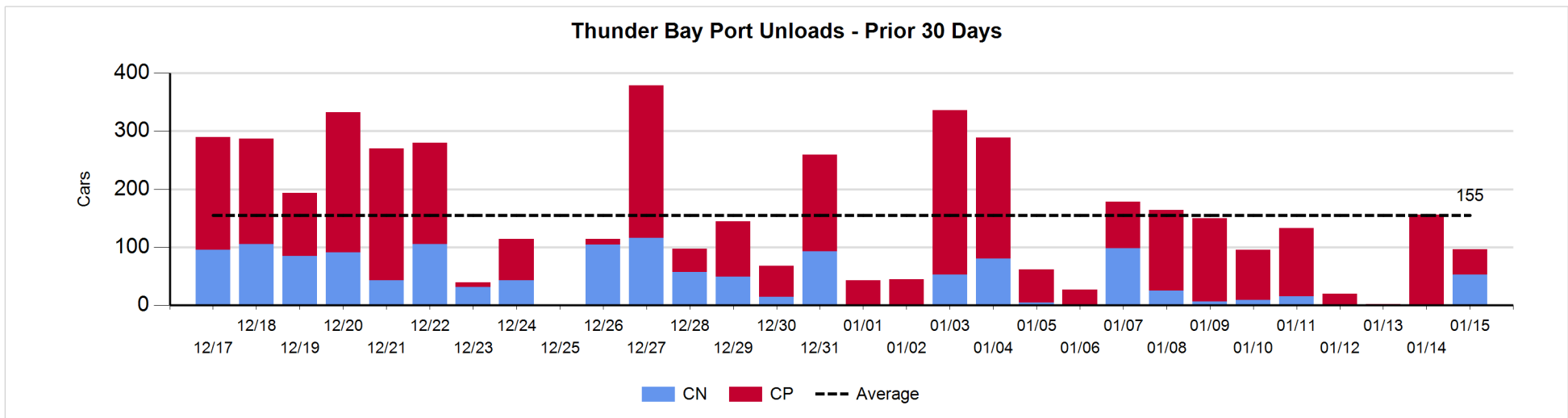
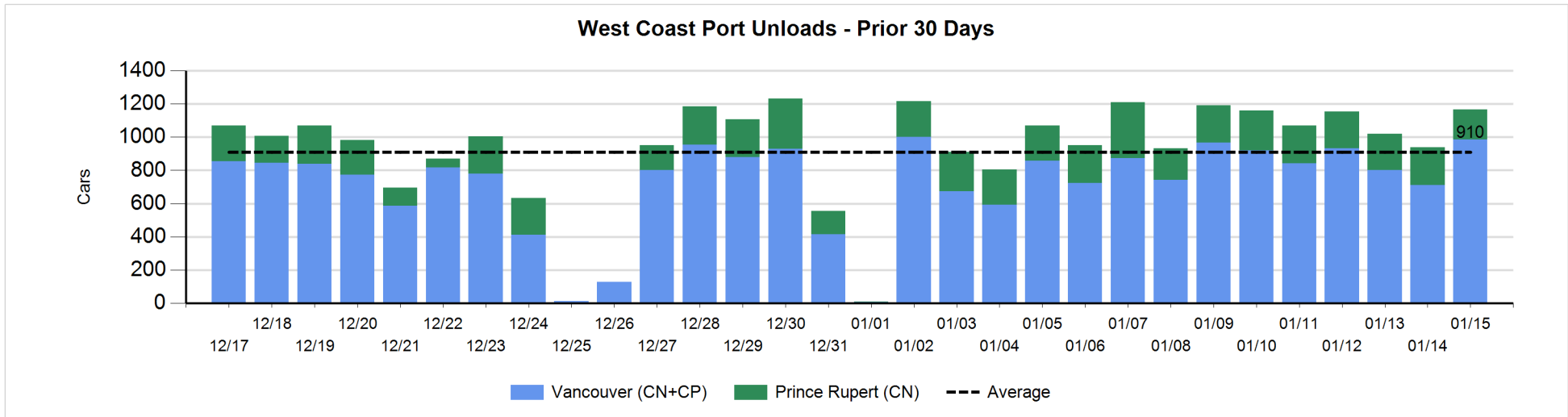
**Change in Loads Not Moving 48 Hours or More - 1/15/2019**

	E Canada	Prince Rupert	Thunder Bay	USA/MEX	Vancouver	Total
<b>CN</b>						
Origin	0	-65		0	110	45
Enroute	-17	1		-5	242	221
Destination	-5	0	-4	-8	52	35
	-22	-64	-4	-13	404	301
<b>CP</b>						
Origin			0	-110	-58	-168
Enroute	-1		0	25	3	27
Destination	2		-39		163	126
	1		-39	-85	108	-15
<b>US Rail / Short Line</b>						
Origin						
Enroute				-4		-4
Destination				11	-7	4
				7	-7	0



Port Unloads - 1/15/2019

	Prince Rupert	Vancouver	West Coast Total	Thunder Bay	Total
CN	181	415	596	53	649
CP		569	569	43	612
	181	984	1,165	96	1,261





**Port Terminal Status**

**Vancouver**

Daily Activity for 1/15/2019

	Cars Arrived	Cars Received in Interchange	Cars Delivered in Interchange	Cars Placed for Unloading	Loads on Wheels at Destination As of 1/15/2019
CN	459	217	203	394	544
CP	774	199	224	599	907
SRY	4	11		13	69

**Port Unloads**

	01/15	01/14	Week To Date	Last Week
CN	415	312	727	2,993
CP	569	398	967	3,080
SRY	6	16	22	46

**Age Profile of Loaded Cars Waiting Placement for Unloading**

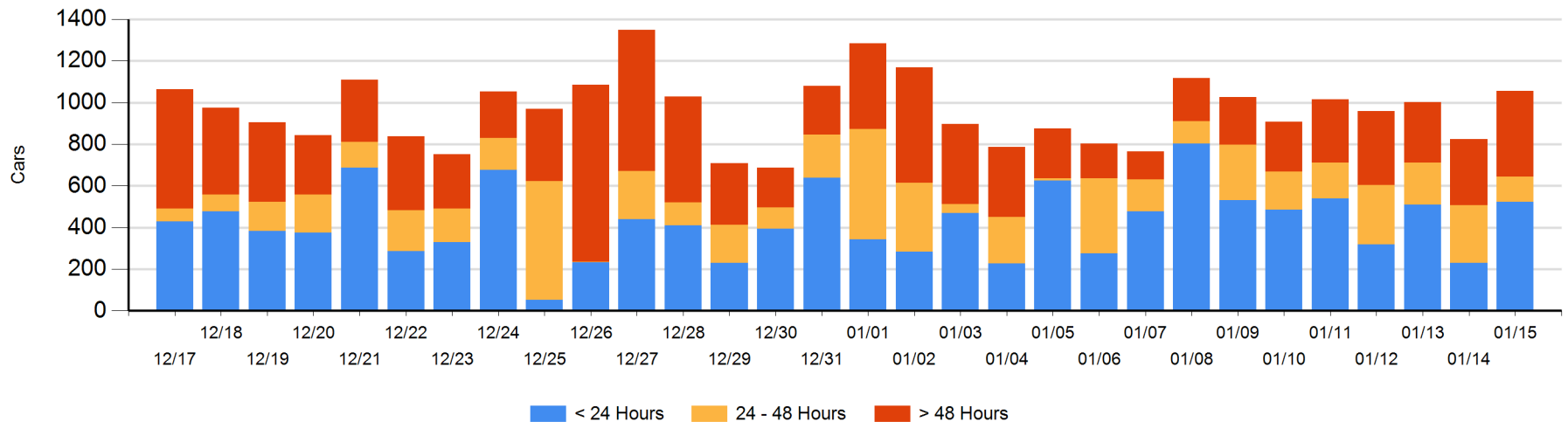
**Today**

	< 24 Hrs	24 - 48 Hrs	> 48-72 Hrs	> 72 Hrs	Total On Hand
CN	249	14	110	122	495
CP	270	108	67	110	555
SRY	4			1	5

**Change in Last 24 Hours**

	< 24 Hrs	24-48 Hrs	48 - 72 Hrs	> 72 Hrs
CN	182	-97	45	56
CP	107	-58	17	-26
SRY	4		-1	1

**Loaded Cars on Hand Vancouver Waiting for Placement - Last 30 Days All Railways**



**Port Terminal Status**

**Prince Rupert**

Daily Activity for 1/15/2019

	Cars Arrived	Cars Received in Interchange	Cars Delivered in Interchange	Cars Placed for Unloading	Loads on Wheels at Destination As of 1/15/2019
CN	289			289	177

**Port Unloads**

	01/15	01/14	Week To Date	Last Week
CN	181	229	410	1,667

**Age Profile of Loaded Cars Waiting Placement for Unloading**

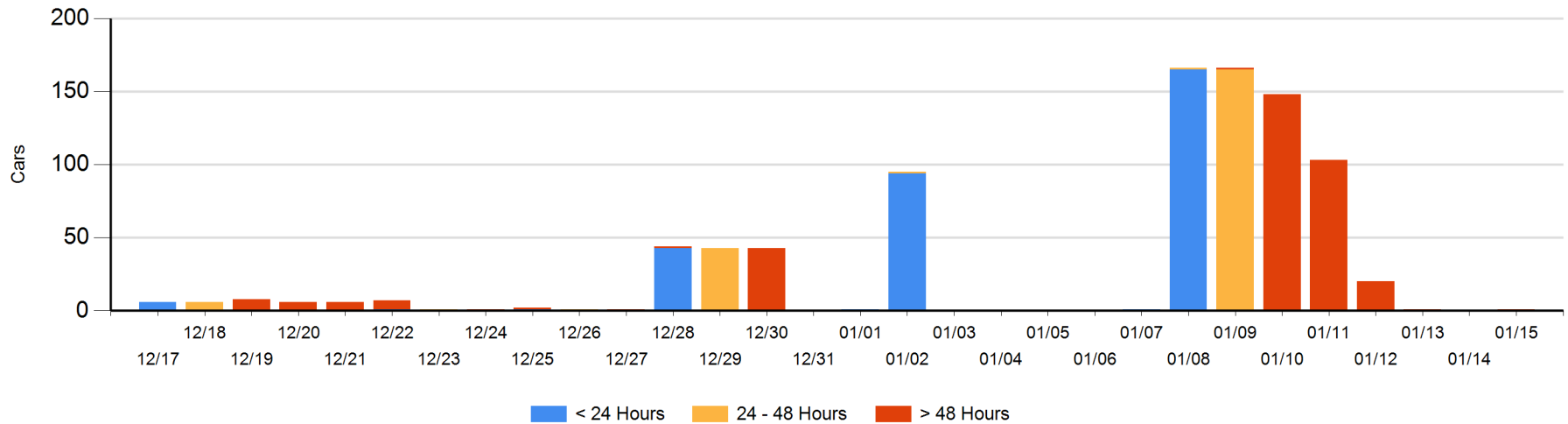
**Today**

	< 24 Hrs	24 - 48 Hrs	> 48-72 Hrs	> 72 Hrs	Total On Hand
CN				1	1

**Change in Last 24 Hours**

	< 24 Hrs	24-48 Hrs	48 - 72 Hrs	> 72 Hrs
CN				1

Loaded Cars on Hand Prince Rupert Waiting for Placement - Last 30 Days All Railways



**Port Terminal Status**

**Thunder Bay**

Daily Activity for 1/15/2019

	Cars Arrived	Cars Received in Interchange	Cars Delivered in Interchange	Cars Placed for Unloading	Loads on Wheels at Destination As of 1/15/2019
CN				70	45
CP	54			9	73

**Port Unloads**

	01/15	01/14	Week To Date	Last Week
CN	53		53	153
CP	43	156	199	589

**Age Profile of Loaded Cars Waiting Placement for Unloading**

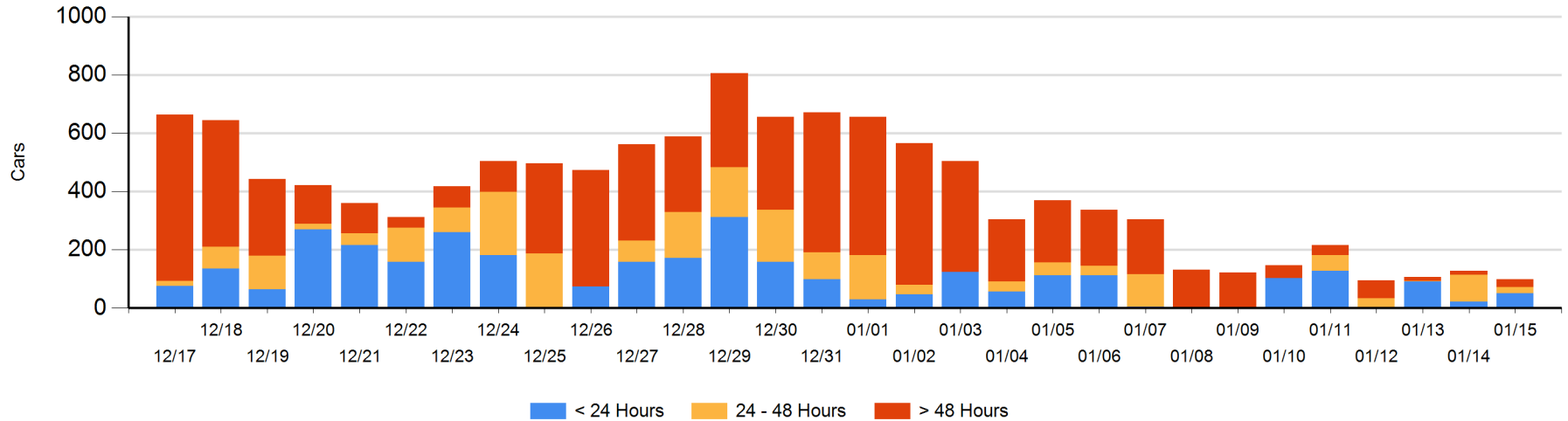
**Today**

	< 24 Hrs	24 - 48 Hrs	> 48-72 Hrs	> 72 Hrs	Total On Hand
CN			23		23
CP	50	22		4	76

**Change in Last 24 Hours**

	< 24 Hrs	24-48 Hrs	48 - 72 Hrs	> 72 Hrs
CN		-93	23	
CP	28	22		-9

**Loaded Cars on Hand Thunder Bay Waiting for Placement - Last 30 Days All Railways**



## Measurement Definitions

Loads on Wheels	<p>Count of loaded rail cars including all rail cars that have been released loaded at origin and have not been reported by the railway as unloaded at destination.</p> <p>Counts include all rail cars (hopper cars and boxcars) moving within a pipeline.</p>
Loads Not Moving	<p>Loaded rail cars for which the railways have not reported a movement event for 48 hours or more whether the rail car is at origin, enroute or at destination.</p>
Port Unloads	<p>Count of rail cars reported by railways as unloaded at the western port destinations of Vancouver, Prince Rupert and Thunder Bay.</p> <p>Unload counts include all rail cars (hopper cars and boxcars) unloaded by all receivers including major port terminals, transloaders and other receivers.</p>
Cars Arrived	<p>Count of rail cars reported as arrived at the destination railway terminal.</p>
Cars Received in Interchange	<p>Count of rail cars received in interchange by each railway within a destination railway terminal. Interchange activity is tracked for the Vancouver and Thunder Bay pipelines as applicable.</p>
Cars Delivered in Interchange	<p>Count of rail cars delivered in interchange by each railway within a destination railway terminal. Interchange activity is tracked for the Vancouver and Thunder Bay pipelines as applicable.</p>
Cars Placed for Unloading	<p>Count of rail cars reported by the railways as placed loaded at the receiver's facility for unloading.</p>
Loads on Wheels at Destination	<p>Count of rail cars that remain under load within the destination railway terminal including rail cars that have been reported as placed for unloading but not yet reported as unloaded.</p>
Waiting Placement for Unloading	<p>Count of rail cars that have been reported as arrived at the destination railway terminal but not reported as placed for unloading by the railway.</p> <p>For the Ports of Vancouver, Prince Rupert and Thunder Bay the count of rail cars waiting placement for unloading is categorized by age – i.e. the elapsed time from arrival at destination to the current report date.</p>