

## SPEED READ

- Loads on wheels declined significantly overnight, reflecting a decline in both CN and CP volumes. On a net basis, volumes declined due to lower traffic across all corridors - Vancouver, Thunder Bay, Prince Rupert, USA/MEX and E. Canada.
- Network fluidity improved overnight, led by a decline in idle car counts on both CN and CP by 13% (-71) and 32% (-442), respectively. The total count of cars for 4+ days on both railways decreased 31% (-298) overnight - currently at 656 cars.
- Three days in Week 49 unloads now ahead of prior week's performance by more than 100 unloads, marking improved week over week performance at Prince Rupert offset by reduced unloads at Vancouver and Thunder Bay.

---

## Loads on Wheels

- Loads on wheels declined significantly by 13% (-1,156) overnight and have now decreased for the fifth consecutive day, due to reduced volumes on both CN and CP - combined total at 7,561, the lowest seen in the last 30 days, and 14% below the trailing 30-day average.
- On a net basis, the decline in loads on wheels indicates lower traffic across all corridors - Vancouver, Thunder Bay, Prince Rupert, USA/MEX and E. Canada.
- CN volumes declined significantly by 15% (-770) overnight, with lower volumes across all corridors other than E. Canada. System wide CN loads on wheels currently at 4,278 and 9% below the trailing 30-day average.
- CP volumes declined significantly by 12% (-425) overnight and have now decreased for the third consecutive day, driven by a decline in traffic across all corridors - Vancouver, Thunder Bay, USA/MEX and E. Canada. CP system wide loads on wheels currently at 3,114 and 21% below the trailing 30-day average.
- Vancouver currently at 4,361, the lowest seen in the last 30 days, declined significantly by 11% (-527) overnight, now 14% below the trailing 30-day average.
- The Prince Rupert pipeline presently at 1,113, decreased significantly by 18% (-243) overnight, and 10% below the trailing 30-day average.
- Thunder Bay volumes decreased significantly by 18% (-283) overnight and have now decreased for the fourth consecutive day - currently at 1,247 and 18% below the trailing 30-day average, with 46% of traffic moving on CP.

## Hopper Car Rationing

- CN and CP rationed no hopper cars in week 47 and none has yet been reported for week 48.

## Loads Not Moving

- **The count of cars not moving for 48+ hours decreased 27% (-513) overnight, reflecting lower counts on both CN and CP. Idle car counts presently at 1,380 and 27% above the trailing 30-day average.**
- CN
  - **The count of idle cars for 48+ hours decreased 13% (-71) overnight - currently at 458 cars.**
  - The number of cars idle for 4+ days decreased for the third consecutive day, down 21% (-52) overnight - currently at 199 cars.
  - The count of cars not moving for 7+ days declined 2% (-2) overnight - presently at 125 cars.
  - Vancouver represents 10% of all idle cars.
  - In total 4% of all idle cars are dwelling at origin locations.
- CP
  - **CP idle car counts for 48+ hours decreased 32% (-442) overnight - currently at 922 cars.**

- The number of cars idle for 4+ days decreased 35% (-246) overnight - currently at 457 cars.
- The number of cars idle for 7+ days decreased significantly by 78% (-73) overnight - currently at 20 cars.
- Vancouver accounts for 51% of all idle cars.
- In total 30% of all idle cars are dwelling at origin locations.

### **Port Performance**

- CN and CP reported a total of 1,446 cars unloaded at the three major ports, the highest seen in the last 30 days, now 28% above the trailing 30-day average. Three days in Week 49 unloads now ahead of last week's pace by more than 100 unloads, marking higher unloads at Prince Rupert offset by reduced unloads at Vancouver and Thunder Bay.
- Vancouver
  - 869 unloads reported by CN and CP at the Port of Vancouver; CN - 350 and CP - 519. Three days in Week 49 unloads are tracking behind last week's performance by 50 unloads.
  - There are nearly 1,150 cars on site at Vancouver with more than 950 cars arriving at the port in the last 24 hours.
  - CN and CP have 700 cars in British Columbia en route to Vancouver, with nearly 450 cars at Kamloops and west, and 67% of traffic moving on CN.
- Prince Rupert
  - Prince Rupert reported 245 unloads, now ahead of last week's unloads after three days by 200 unloads.
  - Loads on wheels now above 1,000 cars - currently at 1,113 cars.
  - There are nearly 500 cars west of Jasper en route to Prince Rupert.
  - There are nearly 300 cars on site at Prince Rupert with nearly 500 cars arriving at the port in the last 24 hours.
- Thunder Bay
  - 332 unloads were reported at Thunder Bay yesterday. Three days in Week 49 unloads are tracking behind last week's pace by about 50 unloads.
  - There are nearly 1,150 cars on site at Thunder Bay with 25 cars arriving at the port in the prior 24 hours.
  - There are nearly 50 cars en route to Thunder Bay from Winnipeg and east.

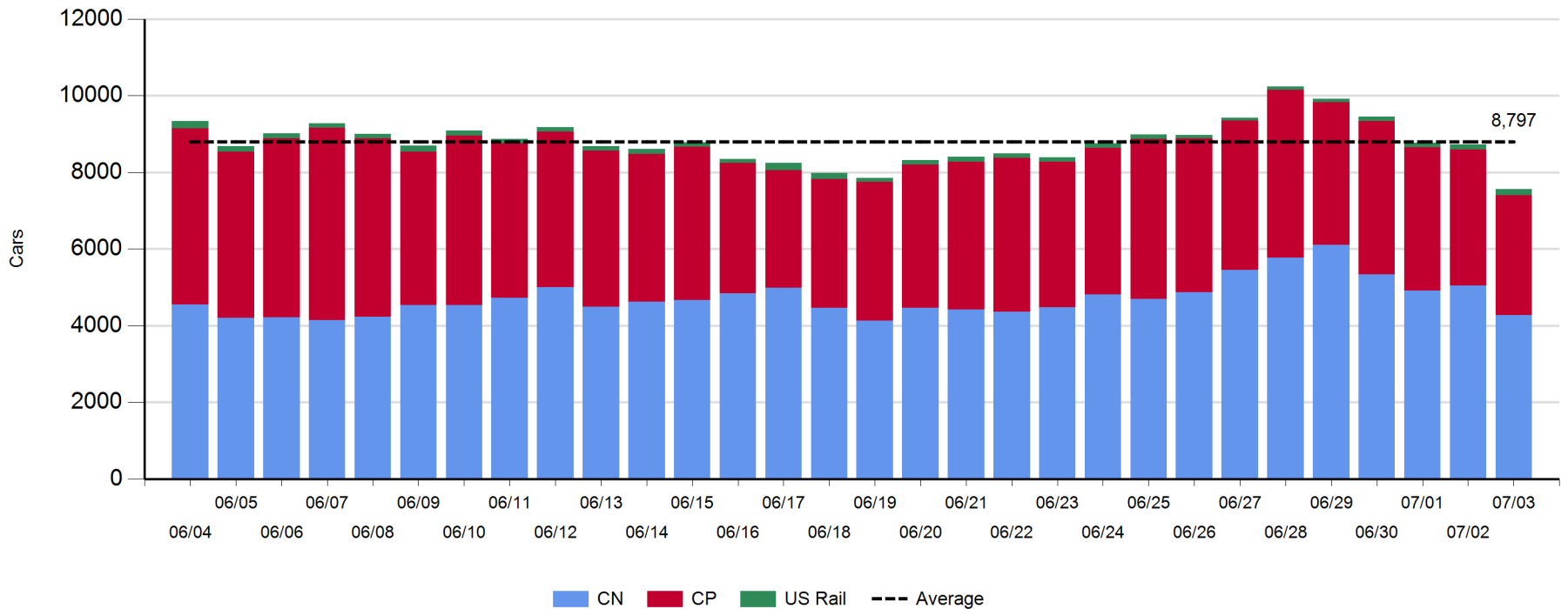
**Daily Loads on Wheels - 7/3/2019**

	E Canada	Prince Rupert	Thunder Bay	USA/MEX	Vancouver	Total
CN	461	1,113	676	58	1,970	4,278
CP	36		571	191	2,316	3,114
Short Line	3				75	78
US Rail				91		91
	500	1,113	1,247	340	4,361	7,561

**Change in Loads on Wheels - Prior 24 Hours**

	E Canada	Prince Rupert	Thunder Bay	USA/MEX	Vancouver	Total
CN	19	-243	-136	-72	-338	-770
CP	-74		-147	-19	-185	-425
Short Line	0				-4	-4
US Rail				43		43
	-55	-243	-283	-48	-527	-1,156

**Loads on Wheels - Prior 30 Days**

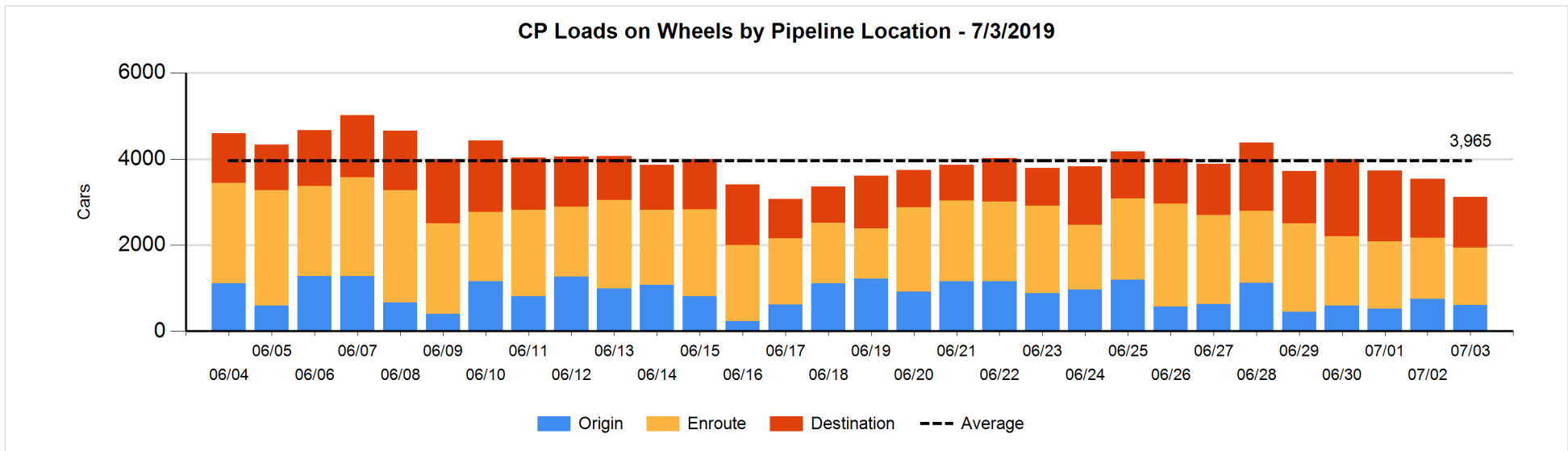
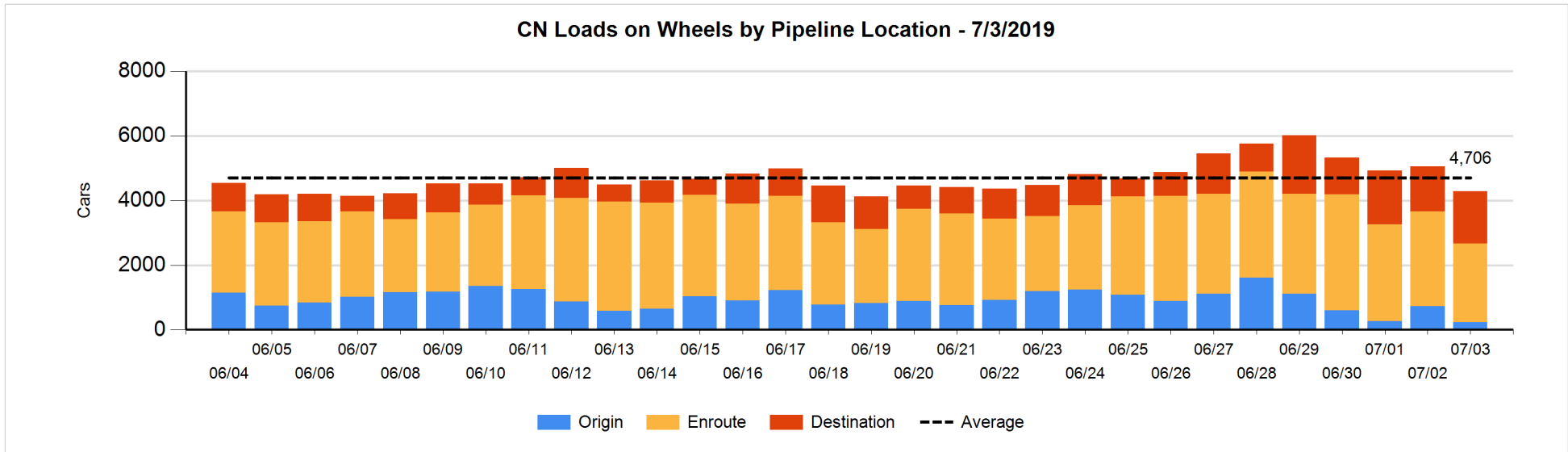


**Daily Loads on Wheels By Pipeline Location - 7/3/2019**

	E Canada	Prince Rupert	Thunder Bay	USA/MEX	Vancouver	Total
CN						
Origin		116			117	233
Enroute	315	713	81	47	1,279	2,435
Destination	146	284	595	11	574	1,610
	461	1,113	676	58	1,970	4,278
CP						
Origin	5		10	3	588	606
Enroute	26		20	48	1,244	1,338
Destination	5		541	140	484	1,170
	36		571	191	2,316	3,114
US Rail / Short Line						
Origin						
Enroute				76		76
Destination	3			15	75	93
	3			91	75	169

**Change in Daily Loads on Wheels By Pipeline Location - Prior 24 Hours**

	E Canada	Prince Rupert	Thunder Bay	USA/MEX	Vancouver	Total
CN						
Origin	-25	-223			-248	-496
Enroute	43	-257	24	-67	-242	-499
Destination	1	237	-160	-5	152	225
	19	-243	-136	-72	-338	-770
CP						
Origin	-5		0	-4	-132	-141
Enroute	-10		0	-83	4	-89
Destination	-59		-147	68	-57	-195
	-74		-147	-19	-185	-425
US Rail / Short Line						
Origin						
Enroute				38		38
Destination	0			5	-4	1
	0			43	-4	39

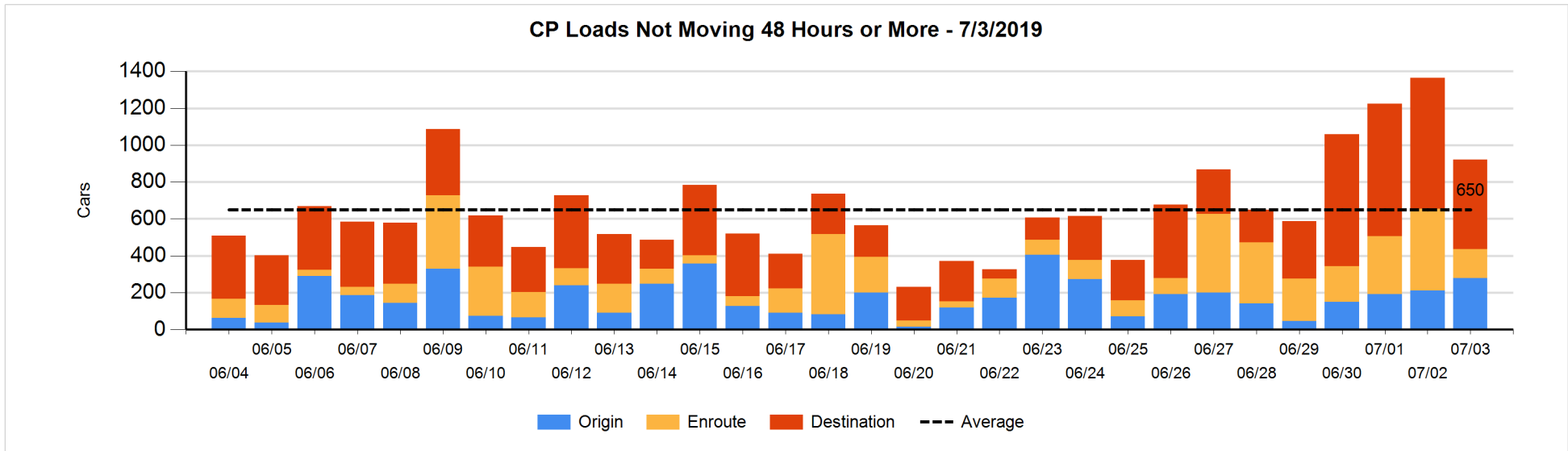
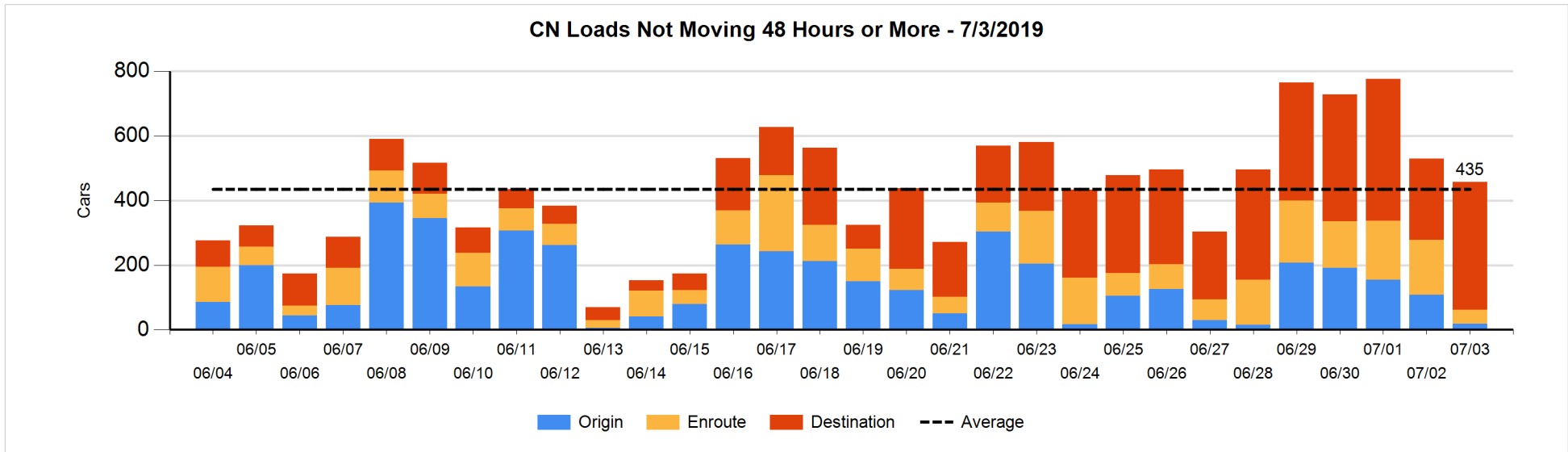


**Loads Not Moving 48 Hours or More - 7/3/2019**

	E Canada	Prince Rupert	Thunder Bay	USA/MEX	Vancouver	Total
<b>CN</b>						
Origin		12			6	18
Enroute	23	5	1		15	44
Destination	73	18	279	3	23	396
	96	35	280	3	44	458
<b>CP</b>						
Origin	5				275	280
Enroute	15		2	32	107	156
Destination	1		379	15	91	486
	21		381	47	473	922
<b>US Rail / Short Line</b>						
Origin						
Enroute				16		16
Destination	3			5	2	10
	3			21	2	26

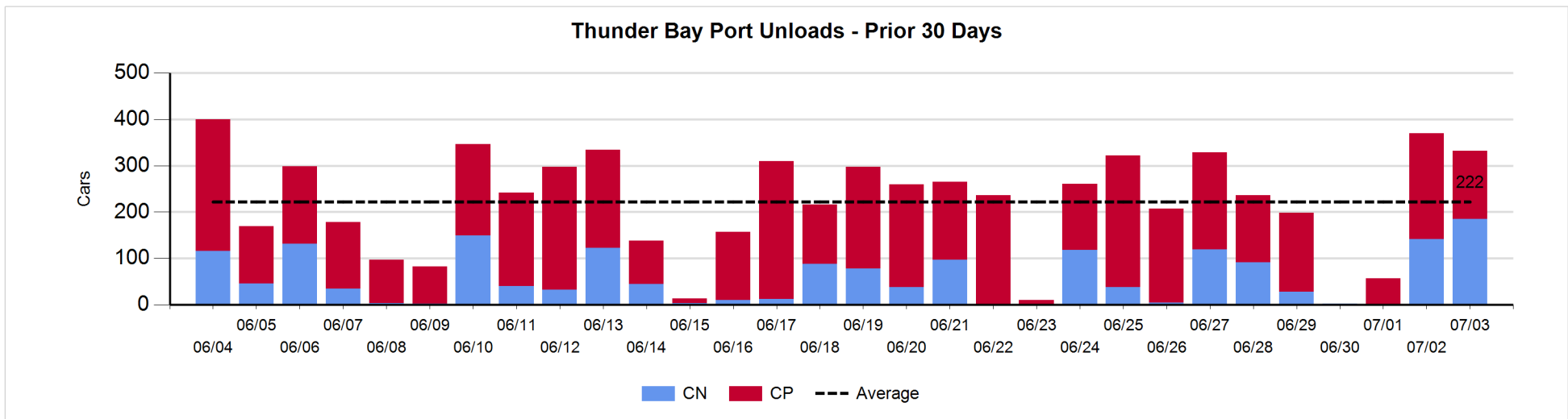
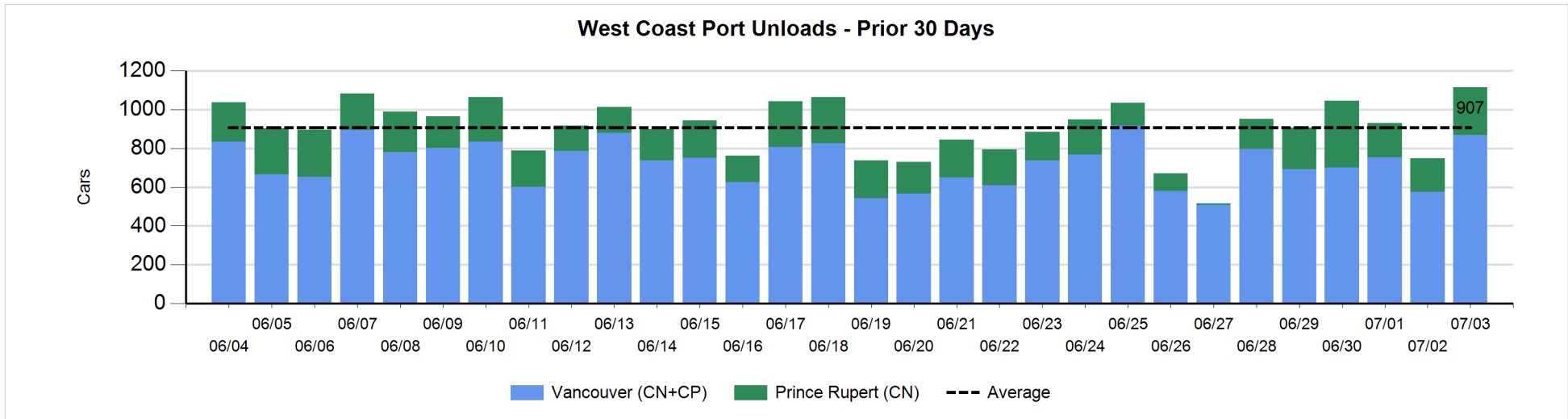
**Change in Loads Not Moving 48 Hours or More - 7/3/2019**

	E Canada	Prince Rupert	Thunder Bay	USA/MEX	Vancouver	Total
<b>CN</b>						
Origin		-20			-70	-90
Enroute	6	0	1		-133	-126
Destination	33	0	118	0	-6	145
	39	-20	119	0	-209	-71
<b>CP</b>						
Origin	-1			-1	70	68
Enroute	-8		0	2	-282	-288
Destination	-4		-123	15	-110	-222
	-13		-123	16	-322	-442
<b>US Rail / Short Line</b>						
Origin						
Enroute				2		2
Destination	0			1	-42	-41
	0			3	-42	-39



**Port Unloads - 7/3/2019**

	Prince Rupert	Vancouver	West Coast Total	Thunder Bay	Total
CN	245	350	595	185	780
CP		519	519	147	666
	245	869	1,114	332	1,446





**Port Terminal Status**

**Vancouver**

Daily Activity for 7/3/2019

	Cars Arrived	Cars Received in Interchange	Cars Delivered in Interchange	Cars Placed for Unloading	Loads on Wheels at Destination As of 7/3/2019
CN	398	120	332	292	574
CP	572	330	124	500	484
SRY	2	6		38	75

**Port Unloads**

	07/03	07/02	Week To Date	Last Week
CN	350	272	847	2,014
CP	519	304	1,351	2,944
SRY	12	10	30	49

**Age Profile of Loaded Cars Waiting Placement for Unloading**

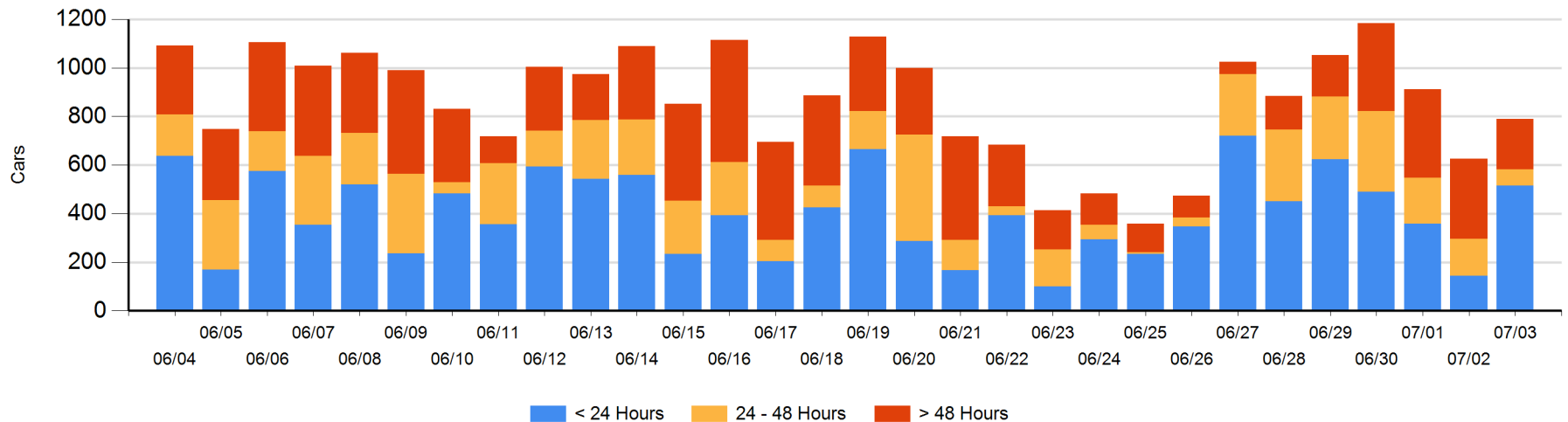
**Today**

	< 24 Hrs	24 - 48 Hrs	> 48-72 Hrs	> 72 Hrs	Total On Hand
CN	241	58	39	51	389
CP	274	10	11	105	400
SRY					0

**Change in Last 24 Hours**

	< 24 Hrs	24-48 Hrs	48 - 72 Hrs	> 72 Hrs
CN	153	-85	9	-58
CP	220	-1	-38	-37
SRY	-1			

**Loaded Cars on Hand Vancouver Waiting for Placement - Last 30 Days All Railways**



**Port Terminal Status**

**Prince Rupert**

**Daily Activity for 7/3/2019**

	Cars Arrived	Cars Received in Interchange	Cars Delivered in Interchange	Cars Placed for Unloading	Loads on Wheels at Destination As of 7/3/2019
CN	482			387	284

**Port Unloads**

	07/03	07/02	Week To Date	Last Week
CN	245	173	595	1,115

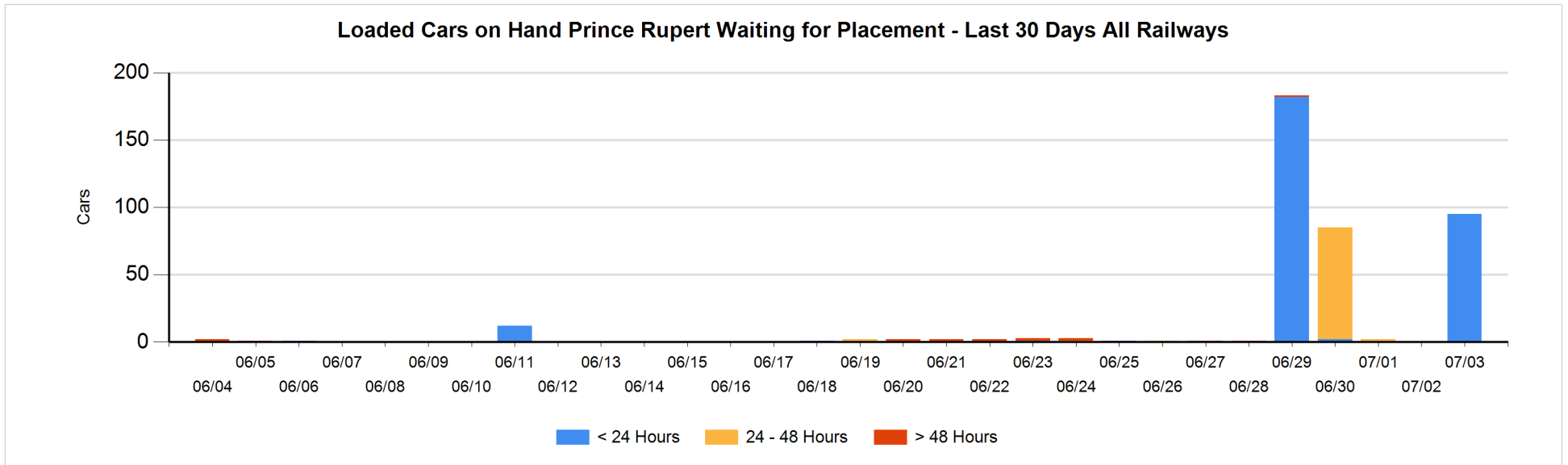
**Age Profile of Loaded Cars Waiting Placement for Unloading**

**Today**

	< 24 Hrs	24 - 48 Hrs	> 48-72 Hrs	> 72 Hrs	Total On Hand
CN	95				95

**Change in Last 24 Hours**

	< 24 Hrs	24-48 Hrs	48 - 72 Hrs	> 72 Hrs
CN	95			



**Port Terminal Status**

**Thunder Bay**

Daily Activity for 7/3/2019

	Cars Arrived	Cars Received in Interchange	Cars Delivered in Interchange	Cars Placed for Unloading	Loads on Wheels at Destination As of 7/3/2019
CN	25			261	595
CP				126	541

**Port Unloads**

	07/03	07/02	Week To Date	Last Week
CN	185	141	326	401
CP	147	229	433	1,154

**Age Profile of Loaded Cars Waiting Placement for Unloading**

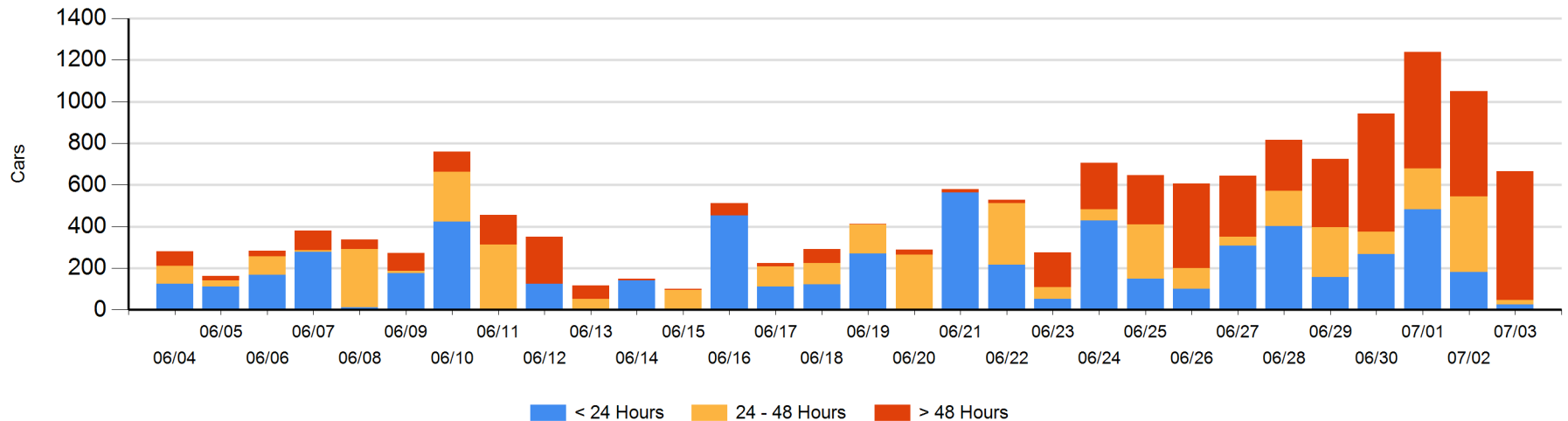
**Today**

	< 24 Hrs	24 - 48 Hrs	> 48-72 Hrs	> 72 Hrs	Total On Hand
CN	25	4	129	11	169
CP		17	114	365	496

**Change in Last 24 Hours**

	< 24 Hrs	24-48 Hrs	48 - 72 Hrs	> 72 Hrs
CN	-140	-225	129	-53
CP	-17	-117	-49	87

**Loaded Cars on Hand Thunder Bay Waiting for Placement - Last 30 Days All Railways**



## Measurement Definitions

Loads on Wheels	<p>Count of loaded rail cars including all rail cars that have been released loaded at origin and have not been reported by the railway as unloaded at destination.</p> <p>Counts include all rail cars (hopper cars and boxcars) moving within a pipeline.</p>
Loads Not Moving	<p>Loaded rail cars for which the railways have not reported a movement event for 48 hours or more whether the rail car is at origin, enroute or at destination.</p>
Port Unloads	<p>Count of rail cars reported by railways as unloaded at the western port destinations of Vancouver, Prince Rupert and Thunder Bay.</p> <p>Unload counts include all rail cars (hopper cars and boxcars) unloaded by all receivers including major port terminals, transloaders and other receivers.</p>
Cars Arrived	<p>Count of rail cars reported as arrived at the destination railway terminal.</p>
Cars Received in Interchange	<p>Count of rail cars received in interchange by each railway within a destination railway terminal. Interchange activity is tracked for the Vancouver and Thunder Bay pipelines as applicable.</p>
Cars Delivered in Interchange	<p>Count of rail cars delivered in interchange by each railway within a destination railway terminal. Interchange activity is tracked for the Vancouver and Thunder Bay pipelines as applicable.</p>
Cars Placed for Unloading	<p>Count of rail cars reported by the railways as placed loaded at the receiver's facility for unloading.</p>
Loads on Wheels at Destination	<p>Count of rail cars that remain under load within the destination railway terminal including rail cars that have been reported as placed for unloading but not yet reported as unloaded.</p>
Waiting Placement for Unloading	<p>Count of rail cars that have been reported as arrived at the destination railway terminal but not reported as placed for unloading by the railway.</p> <p>For the Ports of Vancouver, Prince Rupert and Thunder Bay the count of rail cars waiting placement for unloading is categorized by age – i.e. the elapsed time from arrival at destination to the current report date.</p>