

**SPEED READ**

- Loads on wheels increased slightly overnight, marking higher CP traffic offset by a decline in CN volumes. On a net basis, volumes increased due to higher traffic in the Vancouver, Prince Rupert and USA/MEX corridors offset by lower volumes in the Thunder Bay and E. Canada corridors.
- Network fluidity improved overnight, led by a decline in idle car counts on CP by 32% (-193) offset by an increase in idle car counts on CN by 1% (+2). The total count of cars for 4+ days on both railways fell for the sixth consecutive day, down 10% (-25) overnight - currently at 217 cars.
- One day in Week 50 unloads now ahead of prior week's performance by 100 unloads, reflecting improved week over week performance at Thunder Bay and Prince Rupert offset by lower unloads at Vancouver.

=====

**Loads on Wheels**

- Loads on wheels increased slightly by 1% (+59) overnight, due to higher traffic on CP offset by lower volumes on CN - combined total at 6,933 and 18% below the trailing 30-day average.
- On a net basis, the increase in loads on wheels reflects higher traffic in the Vancouver, Prince Rupert and USA/MEX corridors offset by lower volumes in the Thunder Bay and E. Canada corridors.
- CN volumes decreased slightly by (-18) overnight, with lower traffic in the Thunder Bay and E. Canada corridors offset by higher volumes in the Vancouver, Prince Rupert and USA/MEX corridors. System wide CN loads on wheels presently at 3,920 and 16% below the trailing 30-day average.
- CP volumes gained 3% (+92) overnight, driven by an increase in traffic in the Thunder Bay and E. Canada corridors offset by a decline in traffic in the USA/MEX and Vancouver corridors. CP system wide loads on wheels now at 2,889 and 22% below the trailing 30-day average.
- Vancouver currently at 4,269, rose 2% (+76) overnight, now 13% below the trailing 30-day average.
- The Prince Rupert pipeline presently at 1,209, rose 4% (+45) overnight, and 3% below the trailing 30-day average.
- Thunder Bay volumes decreased 5% (-46) overnight and have now decreased for the third consecutive day - currently at 811, the lowest seen in the last 30 days, and 44% below the trailing 30-day average, with 86% of traffic moving on CP.

**Hopper Car Rationing**

- CP rationed 5 hopper cars in week 48.

**Loads Not Moving**

- **The count of cars not moving for 48+ hours decreased 20% (-191) overnight, reflecting lower counts on CP offset by higher counts on CN. Idle car counts currently at 779 and 30% below the trailing 30-day average.**
- CN
  - **The count of idle cars for 48+ hours gained marginally by 1% (+2) overnight - currently at 372 cars.**
  - The number of cars idle for 4+ days gained significantly by 73% (+56) overnight - presently at 133 cars.
  - The count of cars not moving for 7+ days decreased 3% (-1) overnight and have now decreased for the fourth consecutive day - now at 29 cars.
  - Vancouver represents 52% of all idle cars.
  - In total 39% of all idle cars are dwelling at origin locations.
- CP
  - **CP idle car counts for 48+ hours fell 32% (-193) overnight - presently at 407 cars.**
  - The number of cars idle for 4+ days fell for the sixth consecutive day, down 49% (-81) overnight - presently at 84 cars.

- The number of cars idle for 7+ days decreased significantly by 45% (-50) overnight - currently at 60 cars.
- Vancouver accounts for 44% of all idle cars.
- In total 29% of all idle cars are dwelling at origin locations.

### **Port Performance**

- CN and CP reported a total of 1,079 cars unloaded at the three major ports, now 2% below the trailing 30-day average. One day in Week 50 unloads now ahead of last week's pace by 100 unloads, reflecting higher unloads at Thunder Bay and Prince Rupert offset by lower unloads at Vancouver.
- Vancouver
  - 575 unloads reported by CN and CP at the Port of Vancouver; CN - 395 and CP - 180. One day in Week 50 unloads are tracking behind last week's performance by more than 150 unloads.
  - There are 850 cars on site at Vancouver with 450 cars arriving at the port in the last 24 hours.
  - CN and CP have more than 1,100 cars in British Columbia en route to Vancouver, with 500 cars at Kamloops and west, and 84% of traffic moving on CP.
- Prince Rupert
  - Prince Rupert reported 182 unloads, now ahead of last week's unloads after one day by 5 unloads.
  - Loads on wheels now above 1,000 cars - currently at 1,209 cars.
  - There are 250 cars west of Jasper en route to Prince Rupert.
  - There are more than 100 cars on site at Prince Rupert with less than 300 cars arriving at the port in the last 24 hours.
- Thunder Bay
  - 322 unloads were reported at Thunder Bay yesterday. One day in Week 50 unloads are tracking ahead of last week's pace by more than 250 unloads.
  - There are more than 200 cars on site at Thunder Bay with 100 cars arriving at the port in the prior 24 hours.
  - There are more than 50 cars en route to Thunder Bay from Winnipeg and east.

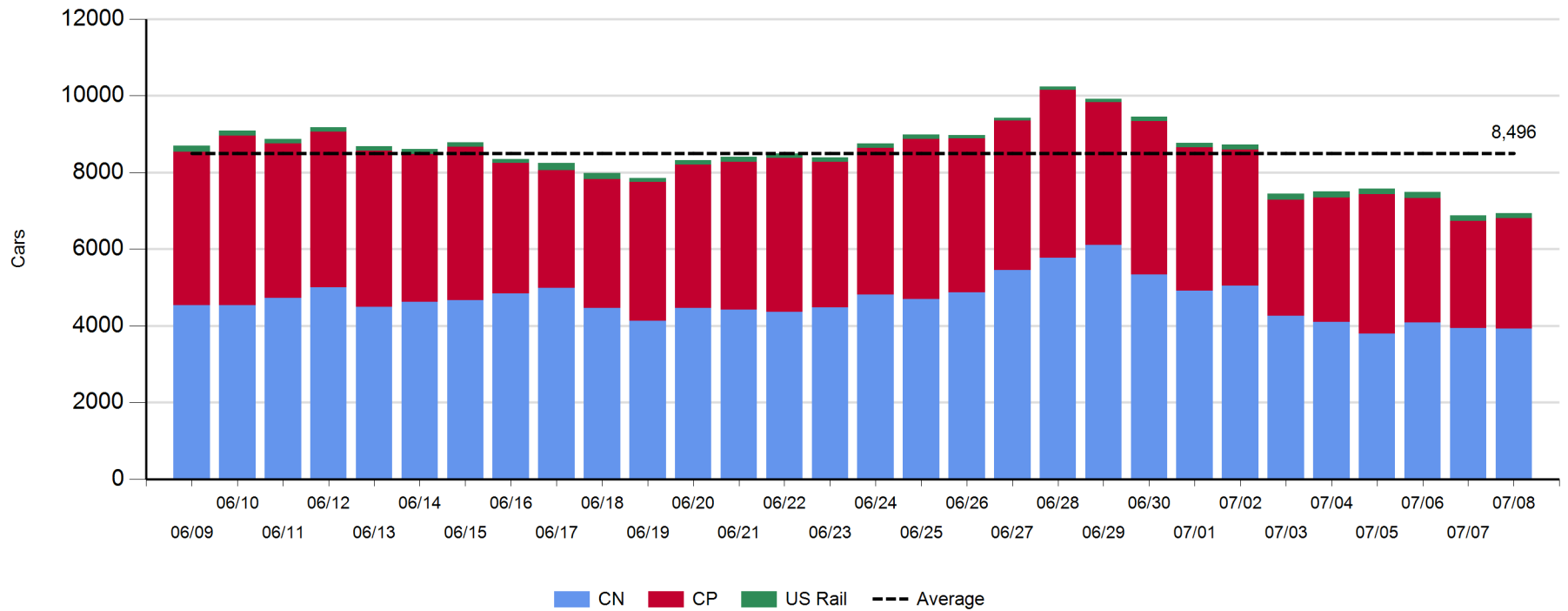
**Daily Loads on Wheels - 7/8/2019**

	E Canada	Prince Rupert	Thunder Bay	USA/MEX	Vancouver	Total
CN	276	1,209	116	114	2,205	3,920
CP	97		695	67	2,030	2,889
Short Line	9				34	43
US Rail				81		81
	382	1,209	811	262	4,269	6,933

**Change in Loads on Wheels - Prior 24 Hours**

	E Canada	Prince Rupert	Thunder Bay	USA/MEX	Vancouver	Total
CN	-48	45	-131	16	100	-18
CP	22		85	-9	-6	92
Short Line	0				-18	-18
US Rail				3		3
	-26	45	-46	10	76	59

**Loads on Wheels - Prior 30 Days**

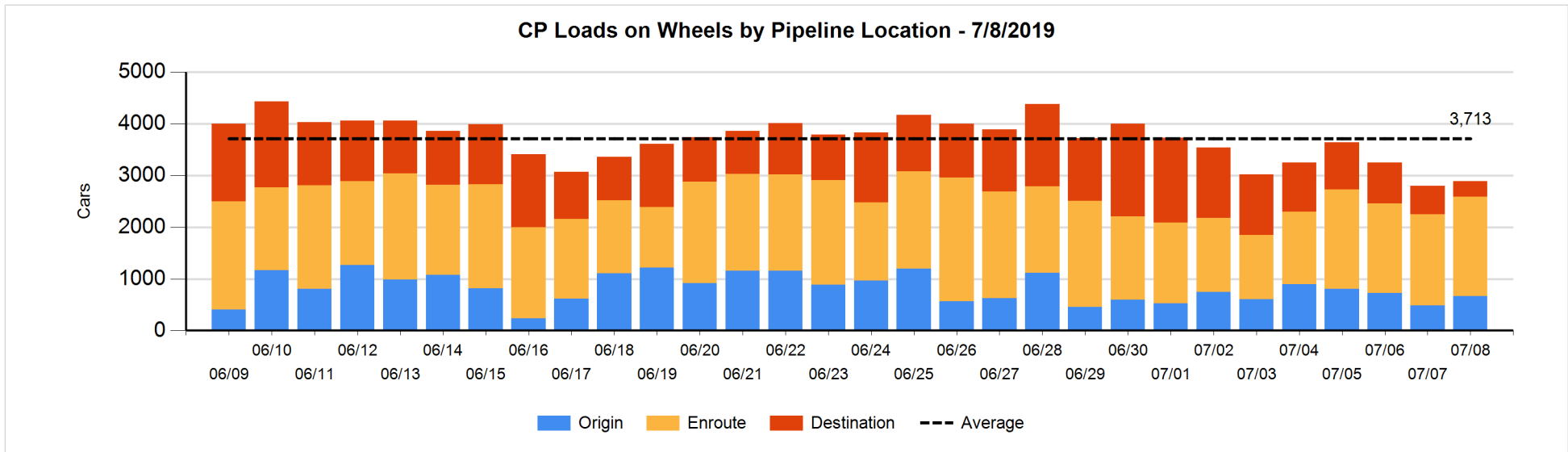
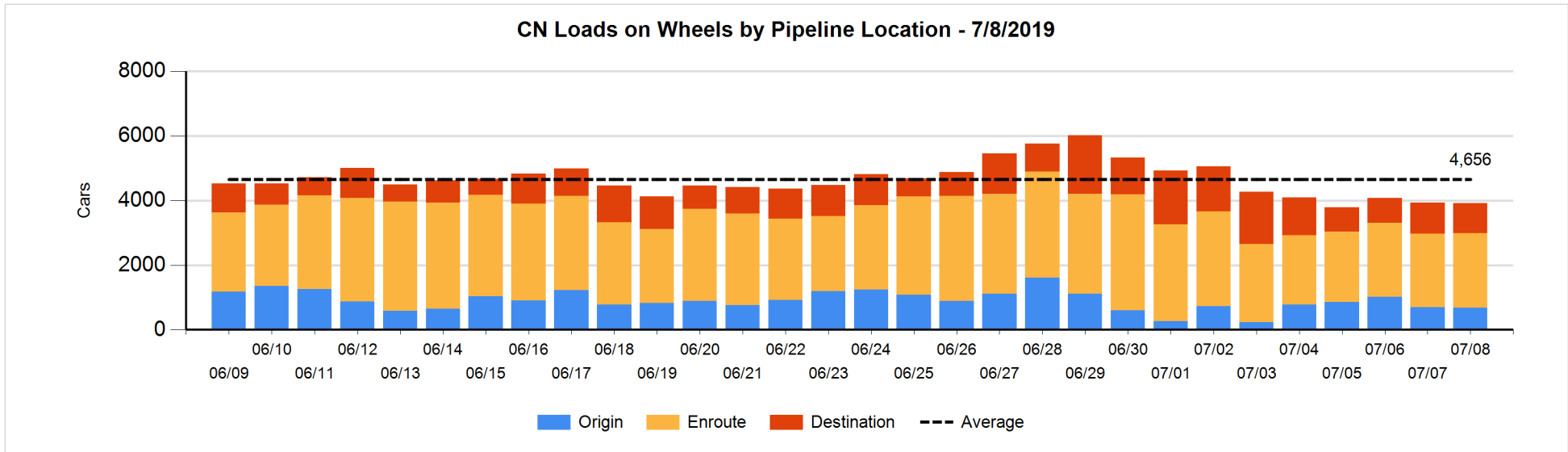


**Daily Loads on Wheels By Pipeline Location - 7/8/2019**

	E Canada	Prince Rupert	Thunder Bay	USA/MEX	Vancouver	Total
CN						
Origin	4	185		21	464	674
Enroute	240	908	2	66	1,099	2,315
Destination	32	116	114	27	642	931
	276	1,209	116	114	2,205	3,920
CP						
Origin	34		324	5	299	662
Enroute	63		256	59	1,551	1,929
Destination			115	3	180	298
	97		695	67	2,030	2,889
US Rail / Short Line						
Origin						
Enroute				47		47
Destination	9			34	34	77
	9			81	34	124

**Change in Daily Loads on Wheels By Pipeline Location - Prior 24 Hours**

	E Canada	Prince Rupert	Thunder Bay	USA/MEX	Vancouver	Total
CN						
Origin	4	-97		21	46	-26
Enroute	-18	44	0	-23	36	39
Destination	-34	98	-131	18	18	-31
	-48	45	-131	16	100	-18
CP						
Origin	19		224	-2	-59	182
Enroute	4		-37	1	192	160
Destination	-1		-102	-8	-139	-250
	22		85	-9	-6	92
US Rail / Short Line						
Origin	-2					-2
Enroute				-14		-14
Destination	2			17	-18	1
	0			3	-18	-15

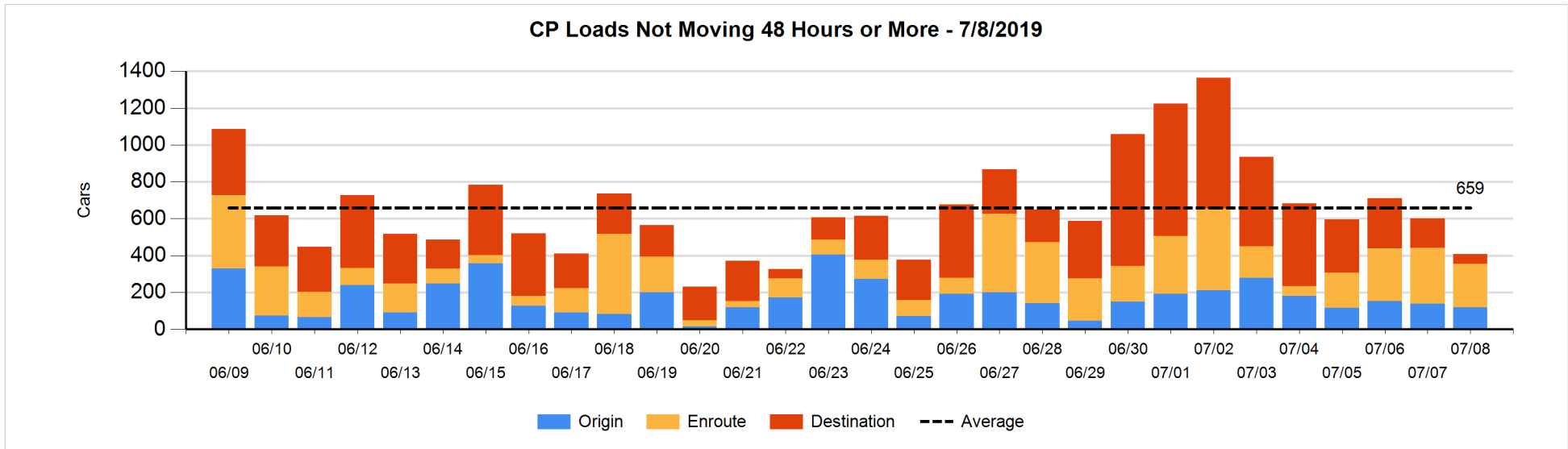
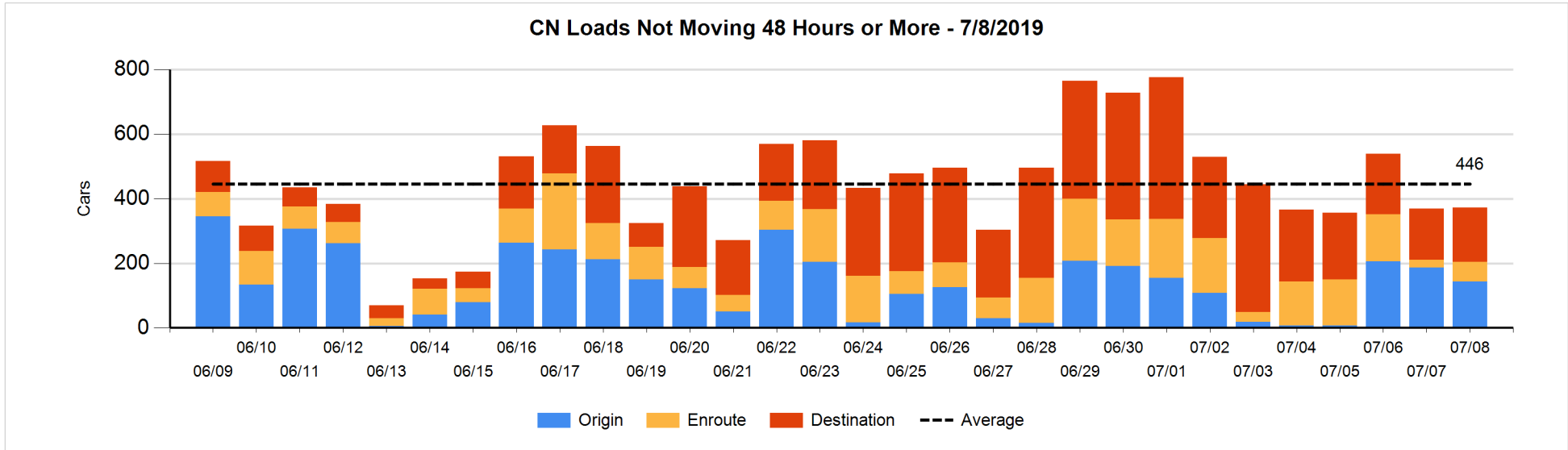


**Loads Not Moving 48 Hours or More - 7/8/2019**

	E Canada	Prince Rupert	Thunder Bay	USA/MEX	Vancouver	Total
CN						
Origin		82			62	144
Enroute	12	4	1	13	30	60
Destination	8	18	32	7	103	168
	20	104	33	20	195	372
CP						
Origin	9		100	5	5	119
Enroute	3		22	51	159	235
Destination			37	2	14	53
	12		159	58	178	407
US Rail / Short Line						
Origin						
Enroute				20		20
Destination	7			15	16	38
	7			35	16	58

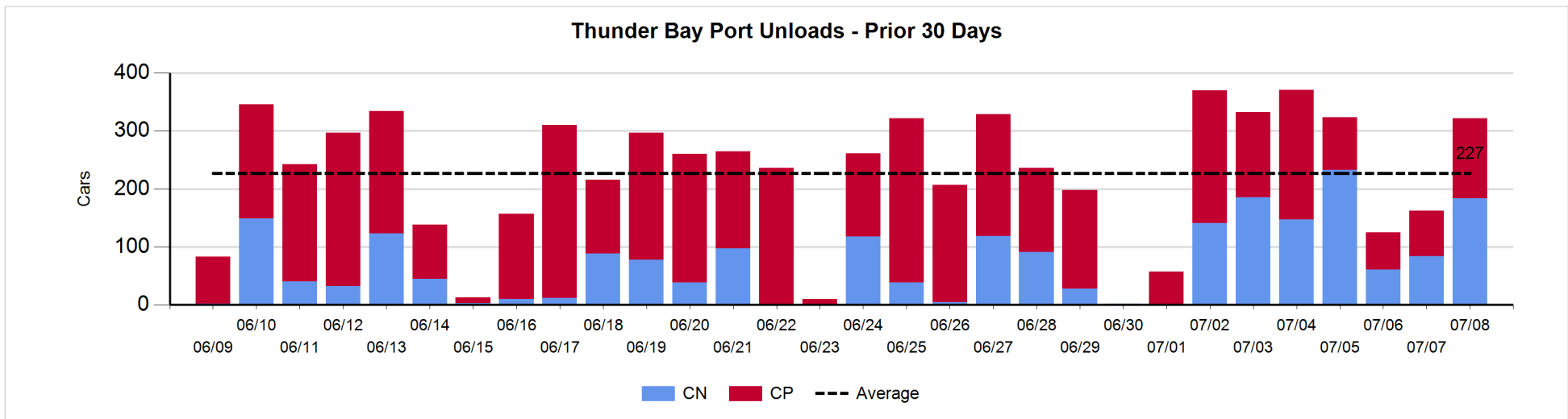
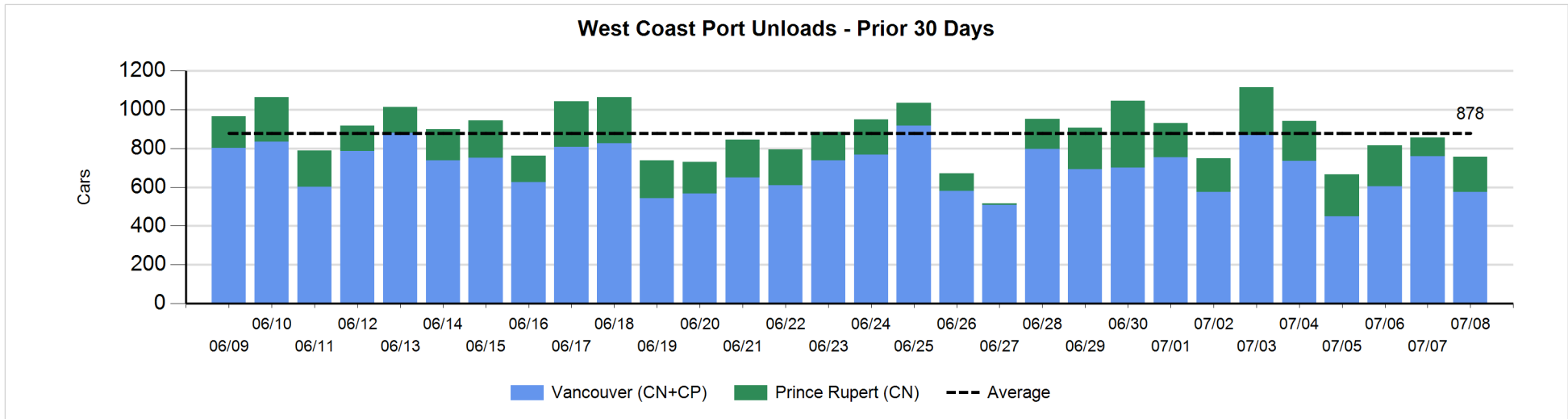
**Change in Loads Not Moving 48 Hours or More - 7/8/2019**

	E Canada	Prince Rupert	Thunder Bay	USA/MEX	Vancouver	Total
CN						
Origin		-92			50	-42
Enroute	7	3	-1	12	14	35
Destination	-17	0	-39	-2	67	9
	-10	-89	-40	10	131	2
CP						
Origin	-1		96	-2	-113	-20
Enroute	-1		-92	-2	27	-68
Destination			-32	-9	-64	-105
	-2		-28	-13	-150	-193
US Rail / Short Line						
Origin						
Enroute				1		1
Destination	0			-1	-15	-16
	0			0	-15	-15



Port Unloads - 7/8/2019

	Prince Rupert	Vancouver	West Coast Total	Thunder Bay	Total
CN	182	395	577	184	761
CP		180	180	138	318
	182	575	757	322	1,079





**Port Terminal Status**

**Vancouver**

Daily Activity for 7/8/2019

	Cars Arrived	Cars Received in Interchange	Cars Delivered in Interchange	Cars Placed for Unloading	Loads on Wheels at Destination As of 7/8/2019
CN	423	128	1	435	642
CP	35		128	112	180
SRY	2	1		14	34

**Port Unloads**

	07/08	07/07	Week To Date	Last Week
CN	395	364	395	1,962
CP	180	395	180	2,783
SRY	21		21	77

**Age Profile of Loaded Cars Waiting Placement for Unloading**

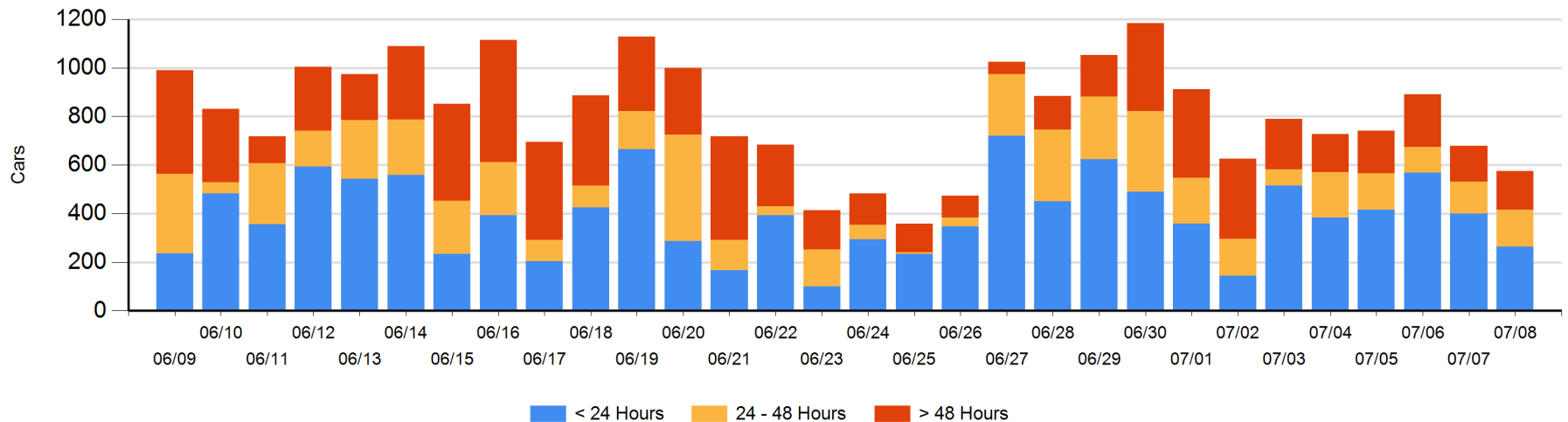
**Today**

	< 24 Hrs	24 - 48 Hrs	> 48-72 Hrs	> 72 Hrs	Total On Hand
CN	231	125	79	31	466
CP	33	28	9	40	110
SRY					0

**Change in Last 24 Hours**

	< 24 Hrs	24-48 Hrs	48 - 72 Hrs	> 72 Hrs
CN	-141	46	79	-33
CP	5	-25	2	-36
SRY				

**Loaded Cars on Hand Vancouver Waiting for Placement - Last 30 Days All Railways**



**Port Terminal Status**

**Prince Rupert**

**Daily Activity for 7/8/2019**

	Cars Arrived	Cars Received in Interchange	Cars Delivered in Interchange	Cars Placed for Unloading	Loads on Wheels at Destination As of 7/8/2019
CN	280			280	116

**Port Unloads**

	07/08	07/07	Week To Date	Last Week
CN	182	96	182	1,327

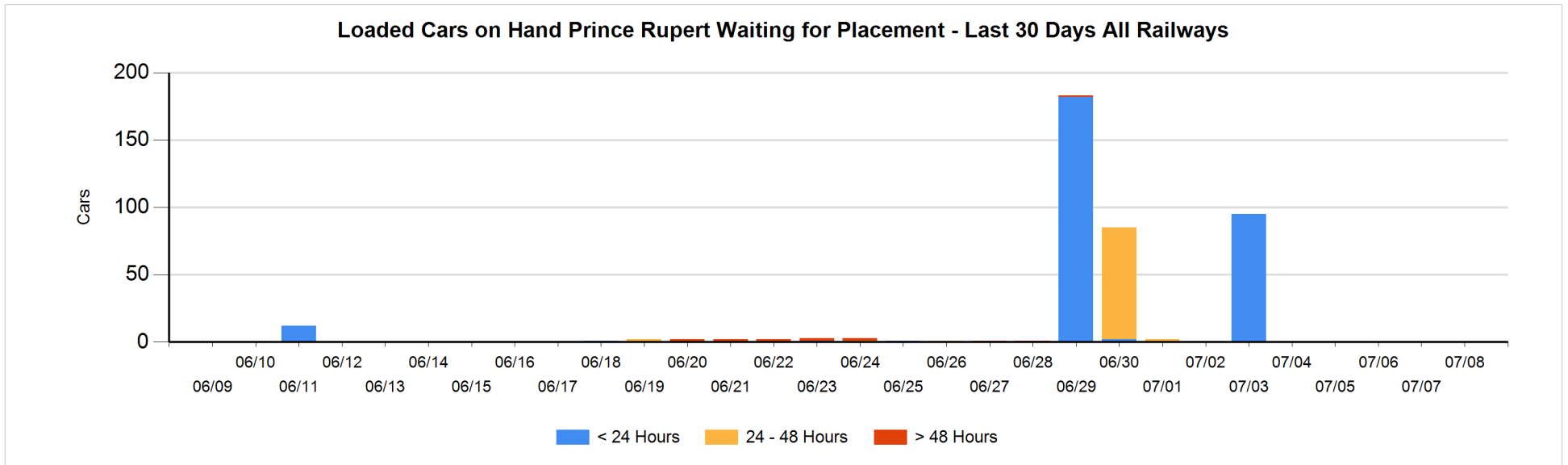
**Age Profile of Loaded Cars Waiting Placement for Unloading**

**Today**

	< 24 Hrs	24 - 48 Hrs	> 48-72 Hrs	> 72 Hrs	Total On Hand
CN					0

**Change in Last 24 Hours**

	< 24 Hrs	24-48 Hrs	48 - 72 Hrs	> 72 Hrs
CN				



**Port Terminal Status**

**Thunder Bay**

Daily Activity for 7/8/2019

	Cars Arrived	Cars Received in Interchange	Cars Delivered in Interchange	Cars Placed for Unloading	Loads on Wheels at Destination As of 7/8/2019
CN	53			81	114
CP	37			92	115

**Port Unloads**

	07/08	07/07	Week To Date	Last Week
CN	184	84	184	851
CP	138	78	138	889

**Age Profile of Loaded Cars Waiting Placement for Unloading**

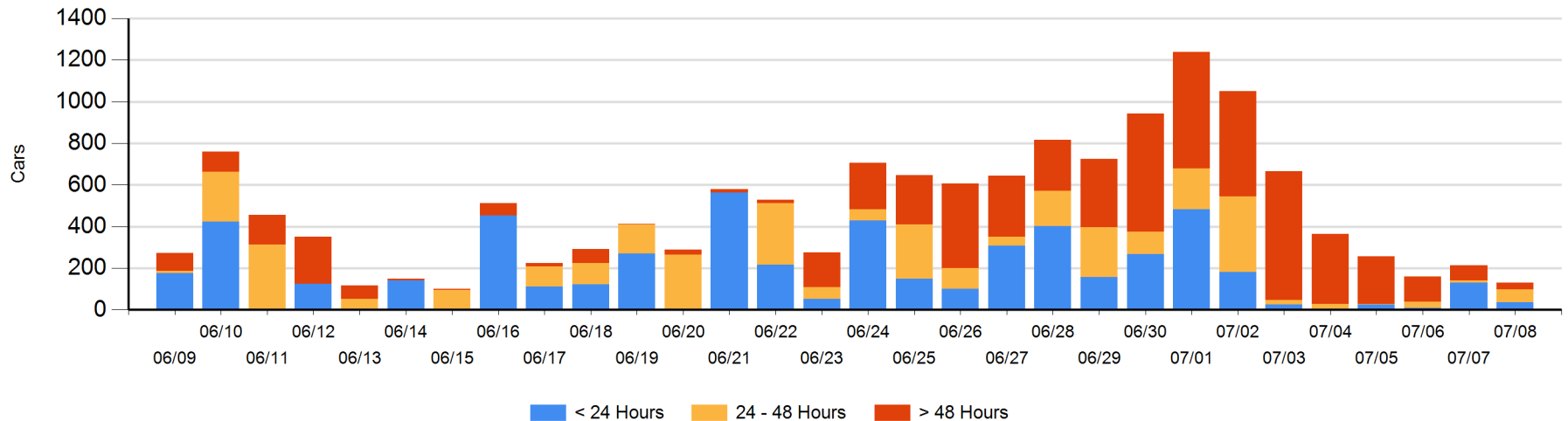
**Today**

	< 24 Hrs	24 - 48 Hrs	> 48-72 Hrs	> 72 Hrs	Total On Hand
CN		21		11	32
CP	37	41		19	97

**Change in Last 24 Hours**

	< 24 Hrs	24-48 Hrs	48 - 72 Hrs	> 72 Hrs
CN	-21	21	-28	0
CP	-72	31		-15

**Loaded Cars on Hand Thunder Bay Waiting for Placement - Last 30 Days All Railways**



## Measurement Definitions

Loads on Wheels	<p>Count of loaded rail cars including all rail cars that have been released loaded at origin and have not been reported by the railway as unloaded at destination.</p> <p>Counts include all rail cars (hopper cars and boxcars) moving within a pipeline.</p>
Loads Not Moving	<p>Loaded rail cars for which the railways have not reported a movement event for 48 hours or more whether the rail car is at origin, enroute or at destination.</p>
Port Unloads	<p>Count of rail cars reported by railways as unloaded at the western port destinations of Vancouver, Prince Rupert and Thunder Bay.</p> <p>Unload counts include all rail cars (hopper cars and boxcars) unloaded by all receivers including major port terminals, transloaders and other receivers.</p>
Cars Arrived	<p>Count of rail cars reported as arrived at the destination railway terminal.</p>
Cars Received in Interchange	<p>Count of rail cars received in interchange by each railway within a destination railway terminal. Interchange activity is tracked for the Vancouver and Thunder Bay pipelines as applicable.</p>
Cars Delivered in Interchange	<p>Count of rail cars delivered in interchange by each railway within a destination railway terminal. Interchange activity is tracked for the Vancouver and Thunder Bay pipelines as applicable.</p>
Cars Placed for Unloading	<p>Count of rail cars reported by the railways as placed loaded at the receiver's facility for unloading.</p>
Loads on Wheels at Destination	<p>Count of rail cars that remain under load within the destination railway terminal including rail cars that have been reported as placed for unloading but not yet reported as unloaded.</p>
Waiting Placement for Unloading	<p>Count of rail cars that have been reported as arrived at the destination railway terminal but not reported as placed for unloading by the railway.</p> <p>For the Ports of Vancouver, Prince Rupert and Thunder Bay the count of rail cars waiting placement for unloading is categorized by age – i.e. the elapsed time from arrival at destination to the current report date.</p>