

SPEED READ

- Loads on wheels gained significantly overnight, marking an increase in both CN and CP volumes. On a net basis, volumes rose due to higher traffic across all corridors - Vancouver, Thunder Bay, Prince Rupert, USA/MEX and E. Canada.
- Network fluidity improved overnight, led by a decline in idle car counts on both CN and CP by 44% (-165) and 32% (-100), respectively. The total count of cars for 4+ days on both railways decreased for the seventh consecutive day, down 22% (-49) overnight - currently at 169 cars.
- Two days in Week 50 unloads now behind prior week's performance by more than 300 unloads, marking lower unloads at Vancouver offset by improved week over week performance at Prince Rupert and Thunder Bay.

=====

Loads on Wheels

- Loads on wheels gained significantly by 11% (+772) overnight, due to higher volumes on both CN and CP - combined total at 7,709 and 9% below the trailing 30-day average.
- On a net basis, the rise in loads on wheels reflects higher traffic across all corridors - Vancouver, Thunder Bay, Prince Rupert, USA/MEX and E. Canada.
- CN volumes increased marginally by 1% (+29) overnight, with higher volumes in the Prince Rupert, E. Canada and Vancouver corridors offset by lower volumes in the Thunder Bay and USA/MEX corridors. System wide CN loads on wheels currently at 3,923 and 15% below the trailing 30-day average.
- CP volumes increased significantly by 25% (+711) overnight, driven by an increase in volumes across all corridors - Vancouver, Thunder Bay, USA/MEX and E. Canada. CP system wide loads on wheels now at 3,604 and 3% below the trailing 30-day average.
- Vancouver currently at 4,569, rose 7% (+299) overnight, now 7% below the trailing 30-day average.
- The Prince Rupert pipeline currently at 1,260, rose 4% (+51) overnight and have now increased for the third consecutive day, and 1% above the trailing 30-day average.
- Thunder Bay volumes rose significantly by 40% (+326) overnight - now at 1,140 and 21% below the trailing 30-day average, with 93% of traffic moving on CP.

Hopper Car Rationing

- CP rationed 5 hopper cars in week 48.

Loads Not Moving

- **The count of cars not moving for 48+ hours fell 39% (-265) overnight and have now decreased for the third consecutive day, marking lower counts on both CN and CP. Idle car counts currently at 419, the lowest seen in the last 30 days, and 61% below the trailing 30-day average.**
- CN
 - **The count of idle cars for 48+ hours decreased 44% (-165) overnight - now at 207 cars.**
 - The number of cars idle for 4+ days decreased significantly by 46% (-61) overnight - presently at 72 cars.
 - The count of cars not moving for 7+ days gained 3% (+1) overnight - now at 30 cars.
 - Vancouver represents 45% of all idle cars.
 - In total 7% of all idle cars are dwelling at origin locations.
- CP
 - **CP idle car counts for 48+ hours decreased 32% (-100) overnight and have now decreased for the third consecutive day - now at 212 cars, the lowest seen in the last 30 days.**

- The number of cars idle for 4+ days gained 14% (+12) overnight - currently at 97 cars.
- The number of cars idle for 7+ days decreased 7% (-4) overnight - now at 56 cars.
- Vancouver accounts for 28% of all idle cars.
- In total 8% of all idle cars are dwelling at origin locations.

Port Performance

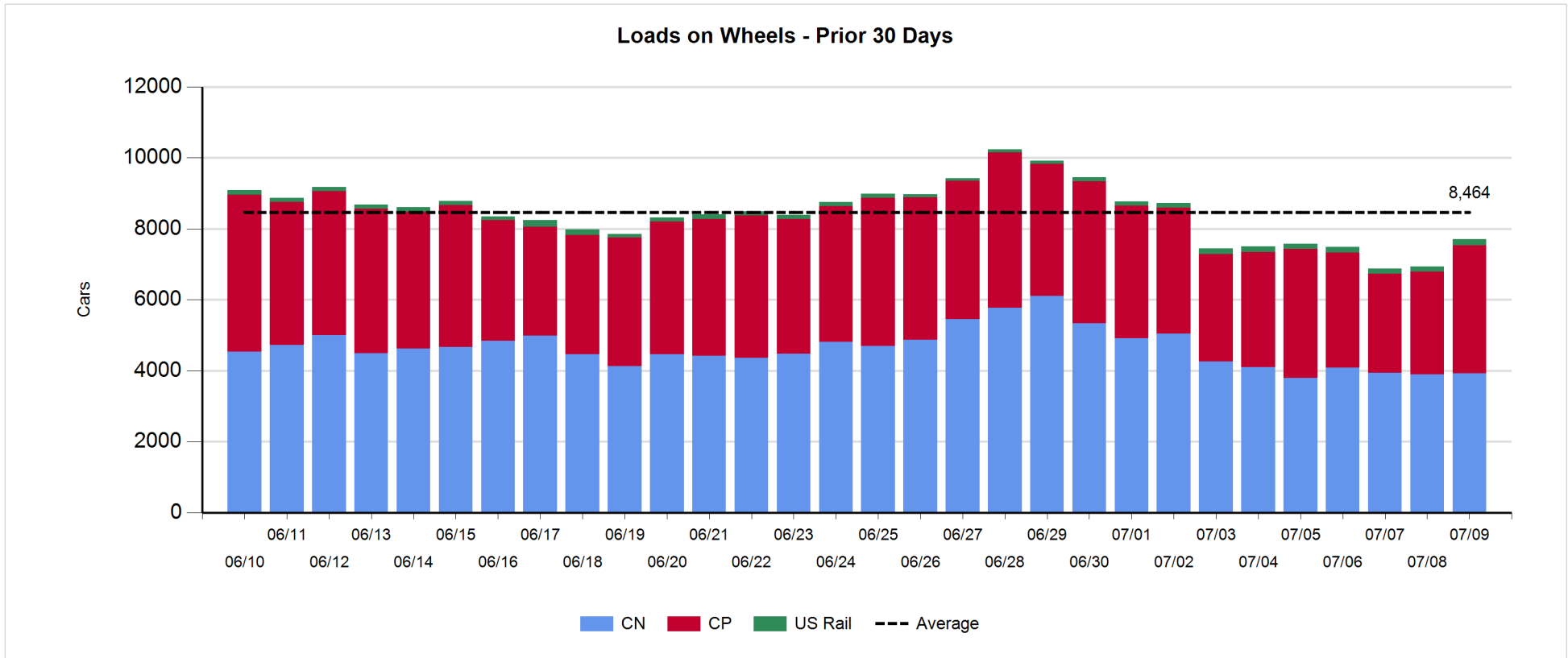
- CN and CP reported a total of 692 cars unloaded at the three major ports, the lowest seen in the last 30 days, now 37% below the trailing 30-day average. Two days in Week 50 unloads now behind last week's pace by more than 300 unloads, marking lower unloads at Vancouver offset by higher unloads at Prince Rupert and Thunder Bay.
- Vancouver
 - 329 unloads, the lowest seen in the last 30 days, was reported by CN and CP at the Port of Vancouver; CN - 241 and CP - 88. Two days in Week 50 unloads are tracking behind last week's performance by more than 400 unloads.
 - There are around 1,050 cars on site at Vancouver with more than 500 cars arriving at the port in the last 24 hours.
 - CN and CP have 1,100 cars in British Columbia en route to Vancouver, with more than 850 cars at Kamloops and west, and 62% of traffic moving on CP.
- Prince Rupert
 - Prince Rupert reported 223 unloads, now ahead of last week's unloads after two days by 50 unloads.
 - Loads on wheels now above 1,000 cars - presently at 1,260 cars.
 - There are about 200 cars west of Jasper en route to Prince Rupert.
 - There are 29 cars on site at Prince Rupert with fewer than 150 cars arriving at the port in the last 24 hours.
- Thunder Bay
 - 140 unloads were reported at Thunder Bay yesterday. Two days in Week 50 unloads are tracking ahead of last week's pace by fewer than 50 unloads.
 - There are more than 200 cars on site at Thunder Bay with more than 100 cars arriving at the port in the prior 24 hours.
 - There are 100 cars en route to Thunder Bay from Winnipeg and east.

Daily Loads on Wheels - 7/9/2019

| | E Canada | Prince Rupert | Thunder Bay | USA/MEX | Vancouver | Total |
|------------|----------|---------------|-------------|---------|-----------|-------|
| CN | 298 | 1,260 | 85 | 97 | 2,183 | 3,923 |
| CP | 131 | | 1,055 | 95 | 2,323 | 3,604 |
| Short Line | 7 | | | | 63 | 70 |
| US Rail | | | | 112 | | 112 |
| | 436 | 1,260 | 1,140 | 304 | 4,569 | 7,709 |

Change in Loads on Wheels - Prior 24 Hours

| | E Canada | Prince Rupert | Thunder Bay | USA/MEX | Vancouver | Total |
|------------|----------|---------------|-------------|---------|-----------|-------|
| CN | 22 | 51 | -31 | -17 | 4 | 29 |
| CP | 34 | | 357 | 28 | 292 | 711 |
| Short Line | -2 | | | | 3 | 1 |
| US Rail | | | | 31 | | 31 |
| | 54 | 51 | 326 | 42 | 299 | 772 |

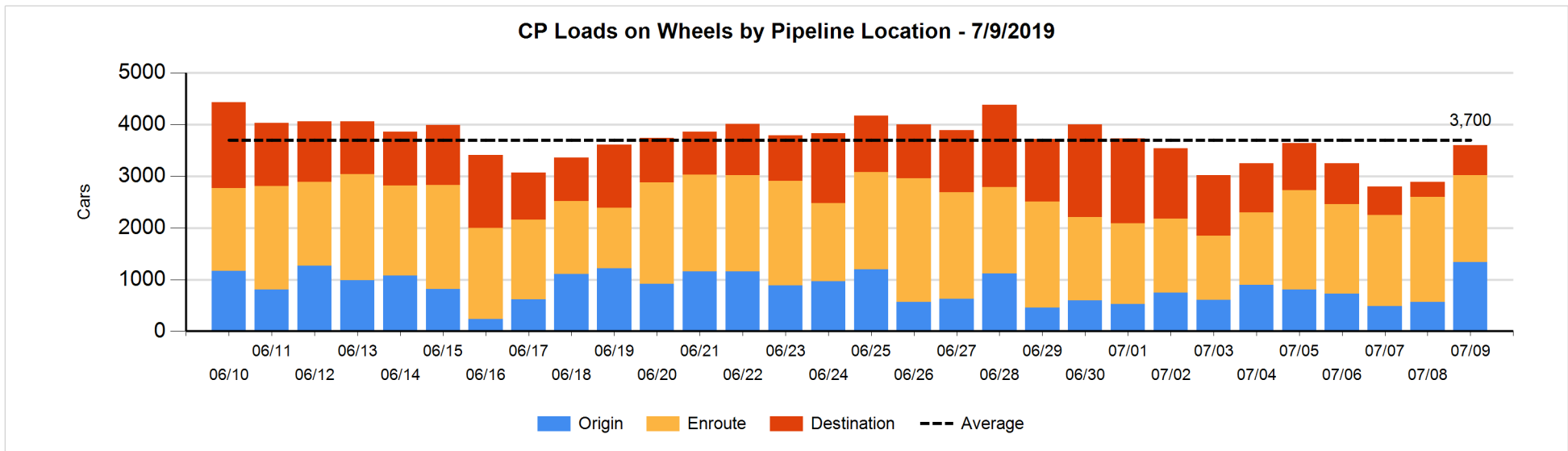
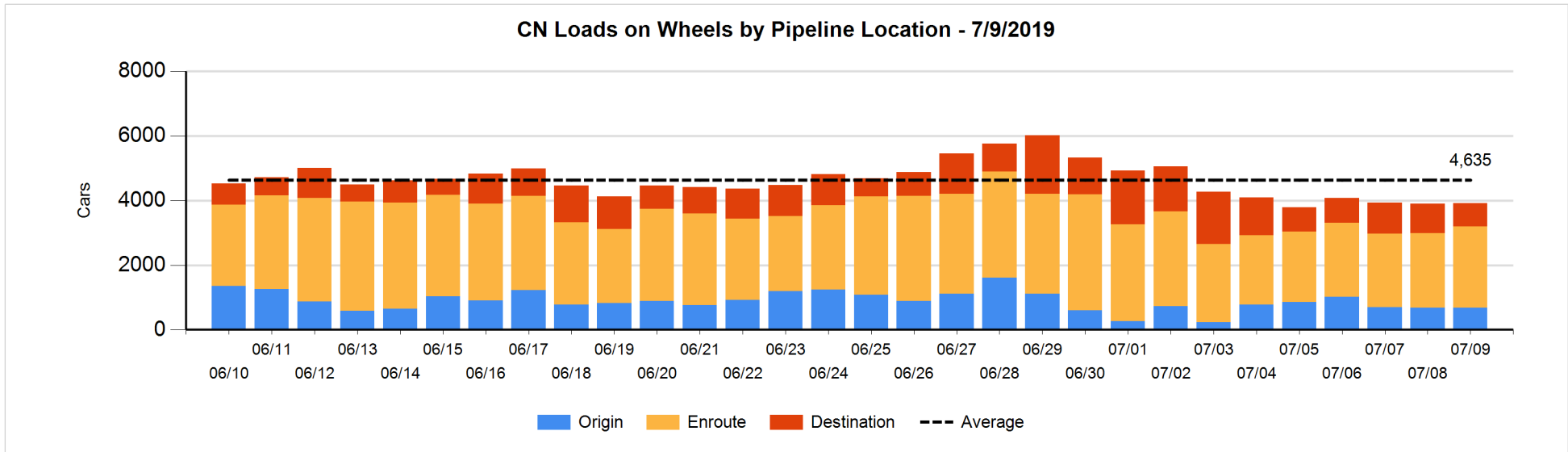


Daily Loads on Wheels By Pipeline Location - 7/9/2019

| | E Canada | Prince Rupert | Thunder Bay | USA/MEX | Vancouver | Total |
|----------------------|----------|---------------|-------------|---------|-----------|-------|
| CN | | | | | | |
| Origin | 36 | 257 | 7 | 21 | 353 | 674 |
| Enroute | 192 | 974 | 2 | 53 | 1,302 | 2,523 |
| Destination | 70 | 29 | 76 | 23 | 528 | 726 |
| | 298 | 1,260 | 85 | 97 | 2,183 | 3,923 |
| CP | | | | | | |
| Origin | 85 | | 527 | 36 | 684 | 1,332 |
| Enroute | 46 | | 393 | 55 | 1,193 | 1,687 |
| Destination | | | 135 | 4 | 446 | 585 |
| | 131 | | 1,055 | 95 | 2,323 | 3,604 |
| US Rail / Short Line | | | | | | |
| Origin | 1 | | | | | 1 |
| Enroute | | | | 77 | | 77 |
| Destination | 6 | | | 35 | 63 | 104 |
| | 7 | | | 112 | 63 | 182 |

Change in Daily Loads on Wheels By Pipeline Location - Prior 24 Hours

| | E Canada | Prince Rupert | Thunder Bay | USA/MEX | Vancouver | Total |
|----------------------|----------|---------------|-------------|---------|-----------|-------|
| CN | | | | | | |
| Origin | 32 | 72 | 7 | 0 | -111 | 0 |
| Enroute | -48 | 66 | 0 | -13 | 203 | 208 |
| Destination | 38 | -87 | -38 | -4 | -88 | -179 |
| | 22 | 51 | -31 | -17 | 4 | 29 |
| CP | | | | | | |
| Origin | 51 | | 299 | 31 | 384 | 765 |
| Enroute | -17 | | 38 | -4 | -358 | -341 |
| Destination | | | 20 | 1 | 266 | 287 |
| | 34 | | 357 | 28 | 292 | 711 |
| US Rail / Short Line | | | | | | |
| Origin | 1 | | | | | 1 |
| Enroute | | | | 30 | | 30 |
| Destination | -3 | | | 1 | 3 | 1 |
| | -2 | | | 31 | 3 | 32 |

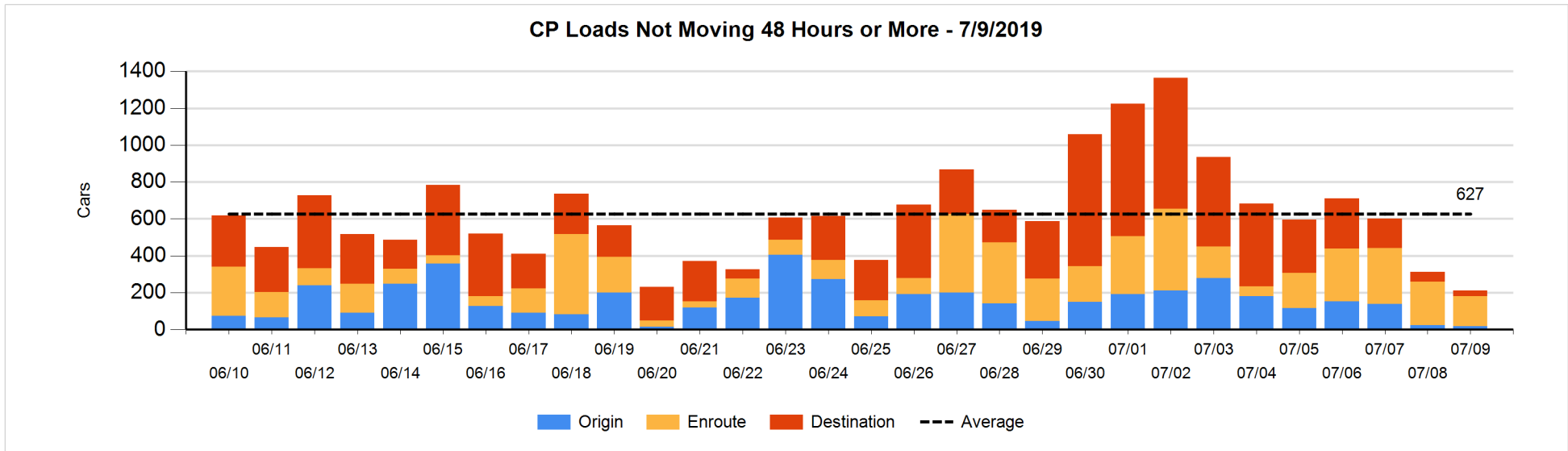
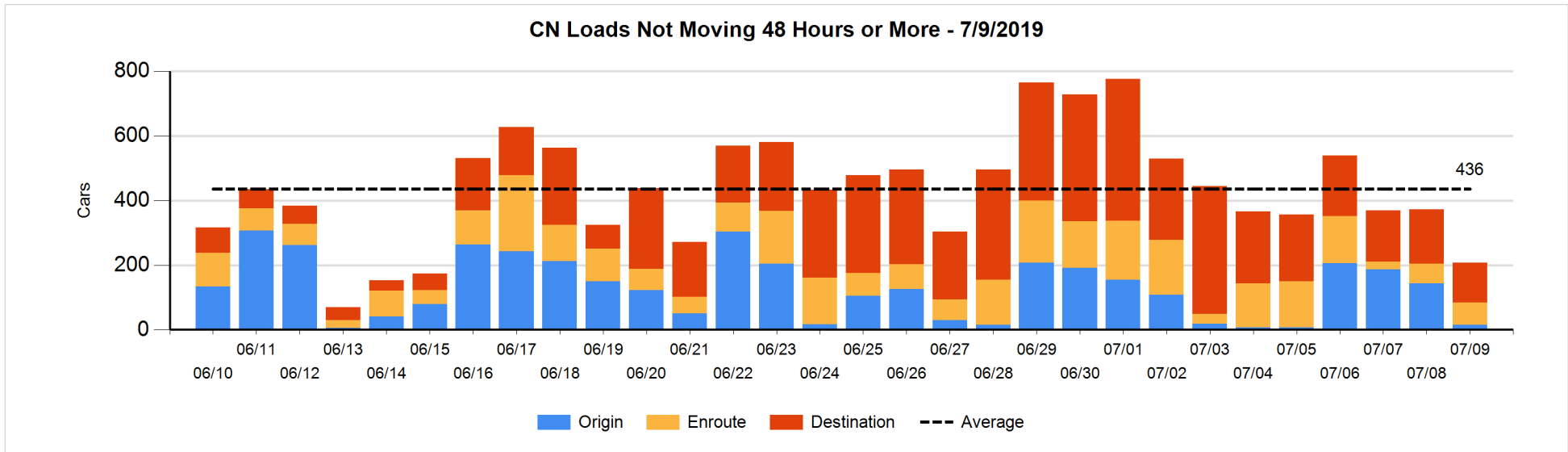


Loads Not Moving 48 Hours or More - 7/9/2019

| | E Canada | Prince Rupert | Thunder Bay | USA/MEX | Vancouver | Total |
|-----------------------------|----------|---------------|-------------|---------|-----------|-------|
| CN | | | | | | |
| Origin | | | | 15 | | 15 |
| Enroute | 44 | 3 | | 3 | 19 | 69 |
| Destination | 9 | 18 | 14 | 7 | 75 | 123 |
| | 53 | 21 | 14 | 25 | 94 | 207 |
| CP | | | | | | |
| Origin | 4 | | 4 | 5 | 5 | 18 |
| Enroute | 3 | | 68 | 45 | 47 | 163 |
| Destination | | | 23 | | 8 | 31 |
| | 7 | | 95 | 50 | 60 | 212 |
| US Rail / Short Line | | | | | | |
| Origin | | | | | | |
| Enroute | | | | 15 | | 15 |
| Destination | 4 | | | 10 | 22 | 36 |
| | 4 | | | 25 | 22 | 51 |

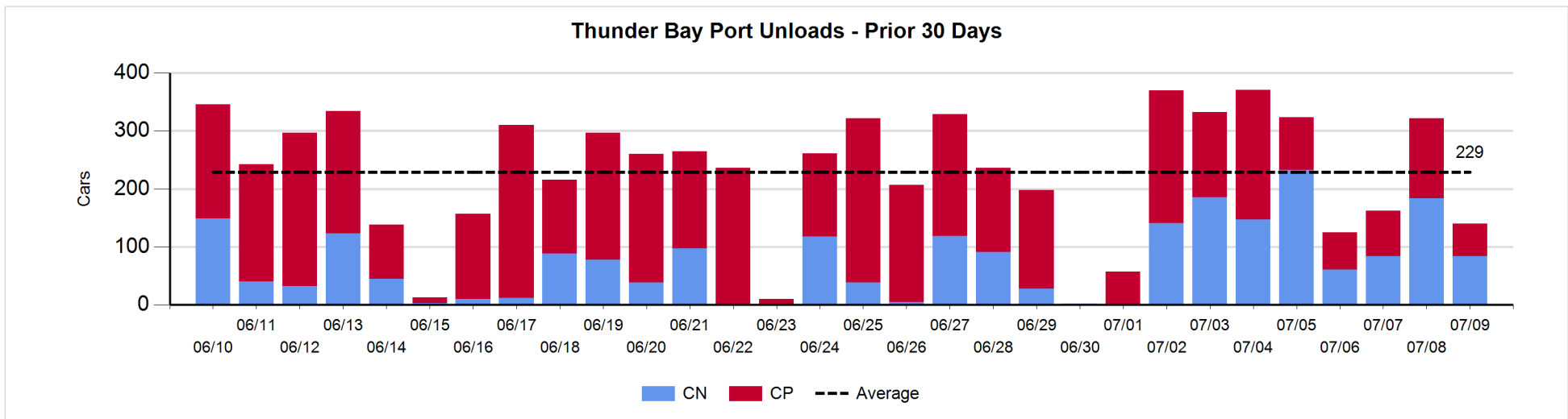
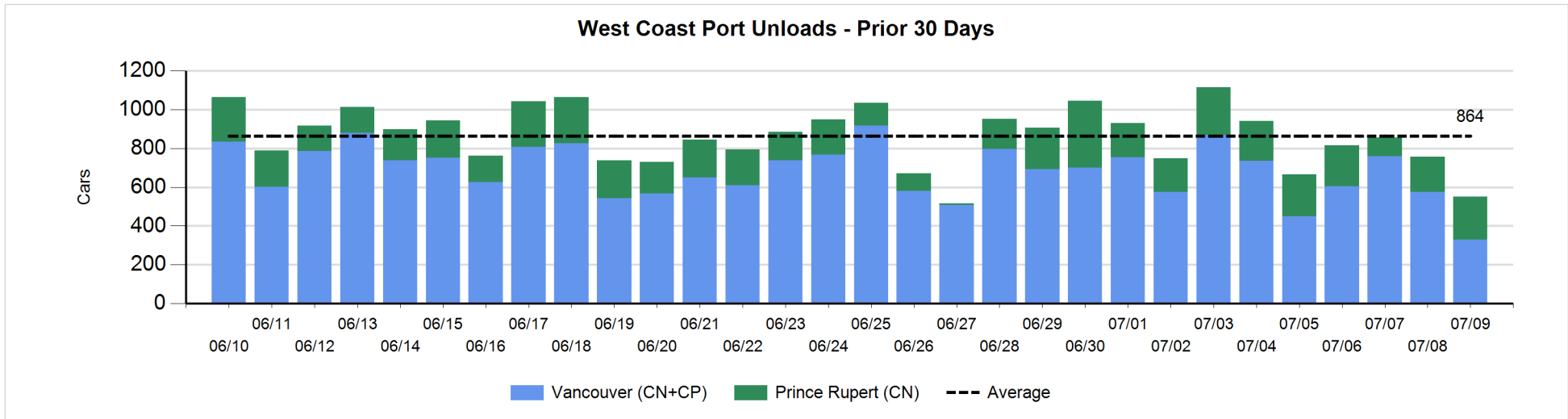
Change in Loads Not Moving 48 Hours or More - 7/9/2019

| | E Canada | Prince Rupert | Thunder Bay | USA/MEX | Vancouver | Total |
|-----------------------------|----------|---------------|-------------|---------|-----------|-------|
| CN | | | | | | |
| Origin | | -82 | | 15 | -62 | -129 |
| Enroute | 32 | -1 | -1 | -10 | -11 | 9 |
| Destination | 1 | 0 | -18 | 0 | -28 | -45 |
| | 33 | -83 | -19 | 5 | -101 | -165 |
| CP | | | | | | |
| Origin | -5 | | 0 | 0 | -1 | -6 |
| Enroute | 0 | | 46 | -6 | -112 | -72 |
| Destination | | | -14 | -2 | -6 | -22 |
| | -5 | | 32 | -8 | -119 | -100 |
| US Rail / Short Line | | | | | | |
| Origin | | | | | | |
| Enroute | | | | -5 | | -5 |
| Destination | -3 | | | -5 | 6 | -2 |
| | -3 | | | -10 | 6 | -7 |



Port Unloads - 7/9/2019

| | Prince Rupert | Vancouver | West Coast Total | Thunder Bay | Total |
|----|---------------|-----------|------------------|-------------|-------|
| CN | 223 | 241 | 464 | 84 | 548 |
| CP | | 88 | 88 | 56 | 144 |
| | 223 | 329 | 552 | 140 | 692 |



Port Terminal Status

Vancouver

Daily Activity for 7/9/2019

| | Cars Arrived | Cars Received in Interchange | Cars Delivered in Interchange | Cars Placed for Unloading | Loads on Wheels at Destination As of 7/9/2019 |
|-----|--------------|------------------------------|-------------------------------|---------------------------|---|
| CN | 37 | 120 | 4 | 352 | 528 |
| CP | 481 | 2 | 129 | 141 | 446 |
| SRY | | 11 | | 4 | 63 |

Port Unloads

| | 07/09 | 07/08 | Week To Date | Last Week |
|-----|-------|-------|--------------|-----------|
| CN | 241 | 395 | 636 | 1,962 |
| CP | 88 | 180 | 268 | 2,783 |
| SRY | 8 | 21 | 29 | 77 |

Age Profile of Loaded Cars Waiting Placement for Unloading

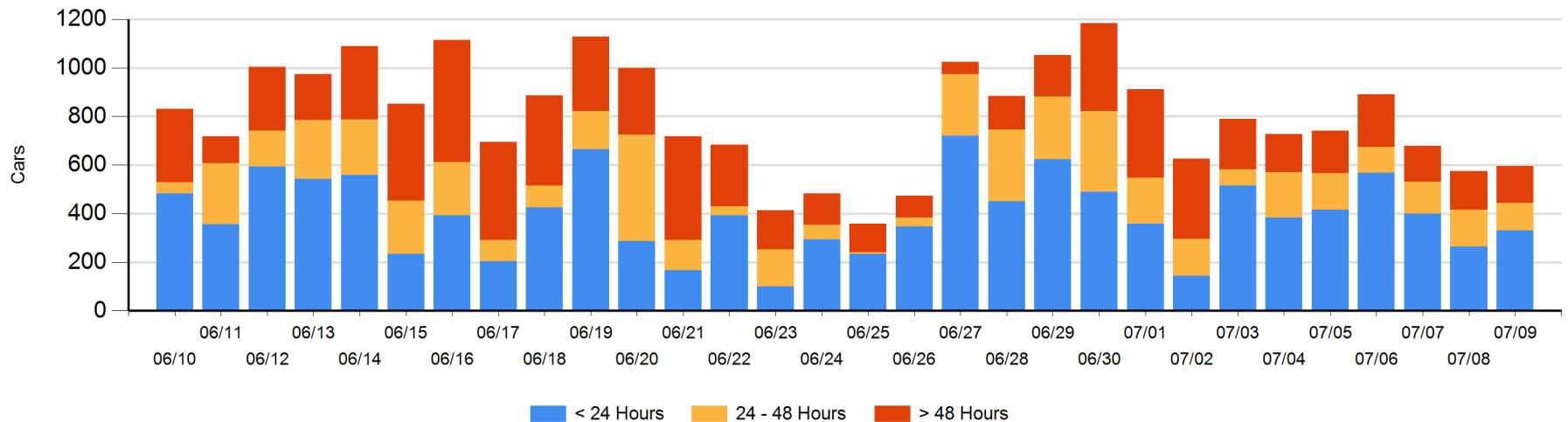
Today

| | < 24 Hrs | 24 - 48 Hrs | > 48-72 Hrs | > 72 Hrs | Total On Hand |
|-----|----------|-------------|-------------|----------|---------------|
| CN | 35 | 31 | 67 | 30 | 163 |
| CP | 296 | 82 | 23 | 33 | 434 |
| SRY | | | | | 0 |

Change in Last 24 Hours

| | < 24 Hrs | 24-48 Hrs | 48 - 72 Hrs | > 72 Hrs |
|-----|----------|-----------|-------------|----------|
| CN | -196 | -94 | -12 | -1 |
| CP | 263 | 54 | 14 | -7 |
| SRY | | | | |

Loaded Cars on Hand Vancouver Waiting for Placement - Last 30 Days All Railways



Port Terminal Status

Prince Rupert

Daily Activity for 7/9/2019

| | Cars Arrived | Cars Received in Interchange | Cars Delivered in Interchange | Cars Placed for Unloading | Loads on Wheels at Destination As of 7/9/2019 |
|----|--------------|------------------------------|-------------------------------|---------------------------|---|
| CN | 133 | | | 136 | 29 |

Port Unloads

| | 07/09 | 07/08 | Week To Date | Last Week |
|----|-------|-------|--------------|-----------|
| CN | 223 | 182 | 405 | 1,327 |

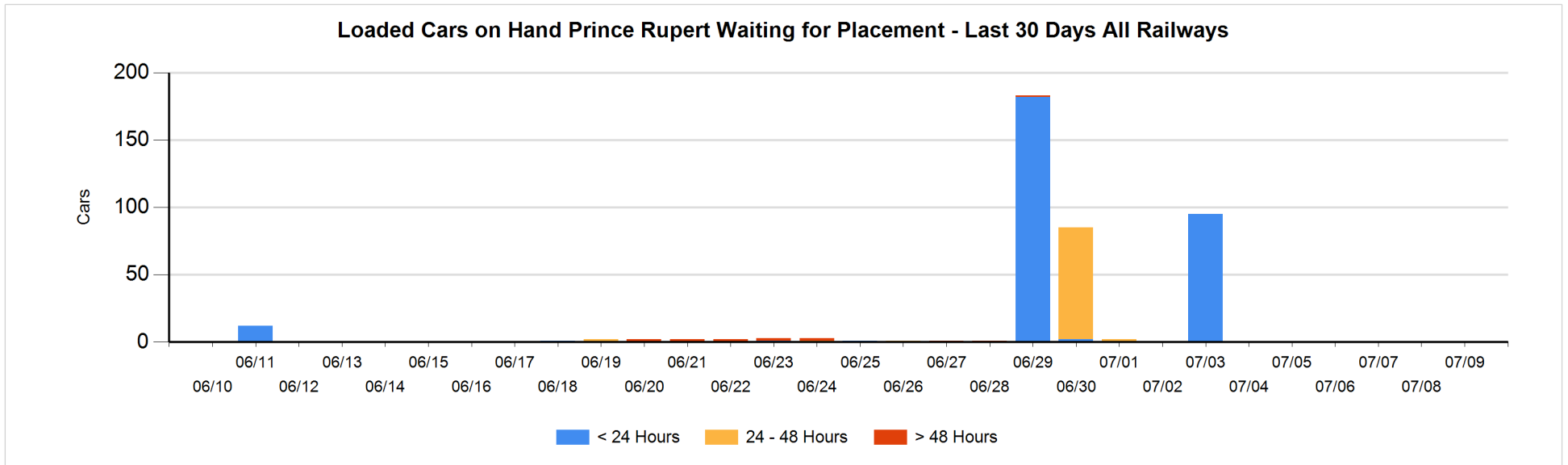
Age Profile of Loaded Cars Waiting Placement for Unloading

Today

| | < 24 Hrs | 24 - 48 Hrs | > 48-72 Hrs | > 72 Hrs | Total On Hand |
|----|----------|-------------|-------------|----------|---------------|
| CN | | | | | 0 |

Change in Last 24 Hours

| | < 24 Hrs | 24-48 Hrs | 48 - 72 Hrs | > 72 Hrs |
|----|----------|-----------|-------------|----------|
| CN | | | | |



Port Terminal Status

Thunder Bay

Daily Activity for 7/9/2019

| | Cars Arrived | Cars Received in Interchange | Cars Delivered in Interchange | Cars Placed for Unloading | Loads on Wheels at Destination As of 7/9/2019 |
|----|--------------|------------------------------|-------------------------------|---------------------------|---|
| CN | 46 | | | 78 | 76 |
| CP | 76 | | | 46 | 135 |

Port Unloads

| | 07/09 | 07/08 | Week To Date | Last Week |
|----|-------|-------|--------------|-----------|
| CN | 84 | 184 | 268 | 851 |
| CP | 56 | 138 | 194 | 889 |

Age Profile of Loaded Cars Waiting Placement for Unloading

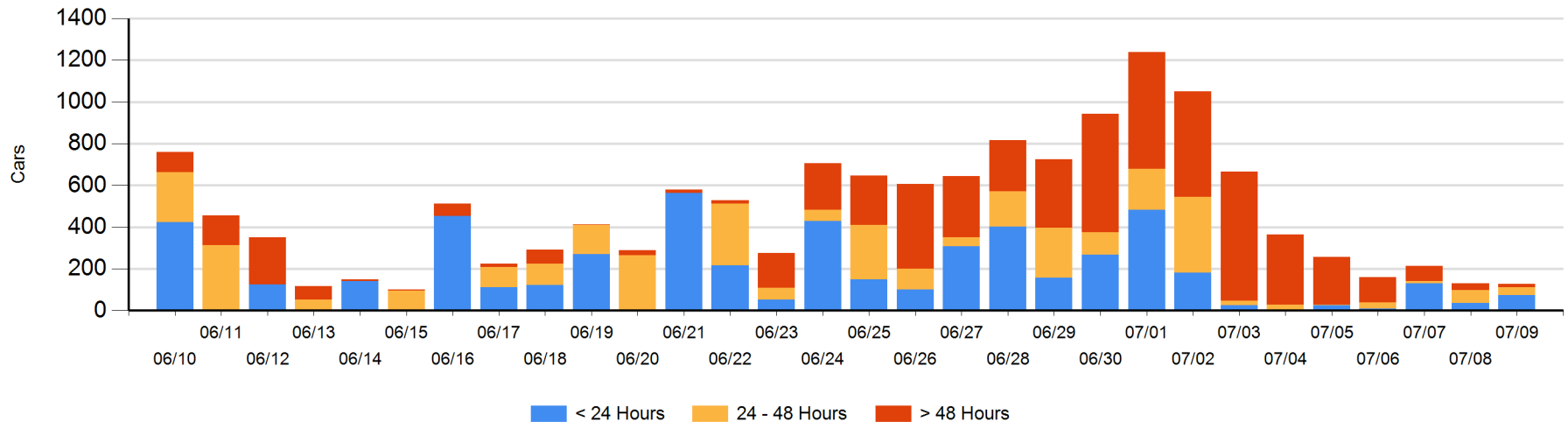
Today

| | < 24 Hrs | 24 - 48 Hrs | > 48-72 Hrs | > 72 Hrs | Total On Hand |
|----|----------|-------------|-------------|----------|---------------|
| CN | | | | | 0 |
| CP | 74 | 37 | 1 | 16 | 128 |

Change in Last 24 Hours

| | < 24 Hrs | 24-48 Hrs | 48 - 72 Hrs | > 72 Hrs |
|----|----------|-----------|-------------|----------|
| CN | | -21 | | -11 |
| CP | 37 | -4 | 1 | -3 |

Loaded Cars on Hand Thunder Bay Waiting for Placement - Last 30 Days All Railways



Measurement Definitions

| | |
|---------------------------------|---|
| Loads on Wheels | <p>Count of loaded rail cars including all rail cars that have been released loaded at origin and have not been reported by the railway as unloaded at destination.</p> <p>Counts include all rail cars (hopper cars and boxcars) moving within a pipeline.</p> |
| Loads Not Moving | <p>Loaded rail cars for which the railways have not reported a movement event for 48 hours or more whether the rail car is at origin, enroute or at destination.</p> |
| Port Unloads | <p>Count of rail cars reported by railways as unloaded at the western port destinations of Vancouver, Prince Rupert and Thunder Bay.</p> <p>Unload counts include all rail cars (hopper cars and boxcars) unloaded by all receivers including major port terminals, transloaders and other receivers.</p> |
| Cars Arrived | <p>Count of rail cars reported as arrived at the destination railway terminal.</p> |
| Cars Received in Interchange | <p>Count of rail cars received in interchange by each railway within a destination railway terminal. Interchange activity is tracked for the Vancouver and Thunder Bay pipelines as applicable.</p> |
| Cars Delivered in Interchange | <p>Count of rail cars delivered in interchange by each railway within a destination railway terminal. Interchange activity is tracked for the Vancouver and Thunder Bay pipelines as applicable.</p> |
| Cars Placed for Unloading | <p>Count of rail cars reported by the railways as placed loaded at the receiver's facility for unloading.</p> |
| Loads on Wheels at Destination | <p>Count of rail cars that remain under load within the destination railway terminal including rail cars that have been reported as placed for unloading but not yet reported as unloaded.</p> |
| Waiting Placement for Unloading | <p>Count of rail cars that have been reported as arrived at the destination railway terminal but not reported as placed for unloading by the railway.</p> <p>For the Ports of Vancouver, Prince Rupert and Thunder Bay the count of rail cars waiting placement for unloading is categorized by age – i.e. the elapsed time from arrival at destination to the current report date.</p> |