

## SPEED READ

- Loads on wheels decreased significantly overnight, marking a decline in both CN and CP volumes. On a net basis, volumes fell due to lower traffic across all corridors - Vancouver, Thunder Bay, Prince Rupert, USA/MEX and E. Canada.
- Network fluidity deteriorated overnight, led by a rise in idle car counts on both CN and CP by 57% (+117) and 194% (+411), respectively. The total count of cars for 4+ days on both railways declined for the eighth consecutive day, down 9% (-15) overnight - currently at 154 cars.
- Three days in Week 50 unloads now behind prior week's performance by around 900 unloads, reflecting reduced unloads across all three major ports - Vancouver, Thunder Bay and Prince Rupert.

=====

## Loads on Wheels

- Loads on wheels decreased significantly by 10% (-805) overnight, due to reduced traffic on both CN and CP - combined total at 6,901 and 18% below the trailing 30-day average.
- On a net basis, the decline in loads on wheels reflects lower traffic across all corridors - Vancouver, Thunder Bay, Prince Rupert, USA/MEX and E. Canada.
- CN volumes decreased 7% (-291) overnight, with lower traffic across all corridors - Vancouver, Thunder Bay, Prince Rupert, USA/MEX and E. Canada. System wide CN loads on wheels now at 3,632, the lowest seen in the last 30 days, and 21% below the trailing 30-day average.
- CP volumes decreased significantly by 13% (-485) overnight, driven by a decline in traffic across all corridors - Vancouver, Thunder Bay, USA/MEX and E. Canada. CP system wide loads on wheels now at 3,116 and 15% below the trailing 30-day average.
- Vancouver now at 3,998, the lowest seen in the last 30 days, fell significantly by 12% (-568) overnight, now 18% below the trailing 30-day average.
- The Prince Rupert pipeline now at 1,202, decreased 5% (-58) overnight, and 4% below the trailing 30-day average.
- Thunder Bay volumes declined 9% (-103) overnight - now at 1,037 and 27% below the trailing 30-day average, with 98% of traffic moving on CP.

## Hopper Car Rationing

- CP rationed 5 hopper cars in week 48.

## Loads Not Moving

- **The count of cars not moving for 48+ hours gained significantly by 126% (+528) overnight, reflecting higher counts on both CN and CP. Idle car counts now at 947 and 11% below the trailing 30-day average.**
- CN
  - **The count of idle cars for 48+ hours gained significantly by 57% (+117) overnight - presently at 324 cars.**
  - The number of cars idle for 4+ days fell 3% (-2) overnight - now at 70 cars.
  - The count of cars not moving for 7+ days increased 23% (+7) overnight - presently at 37 cars.
  - Vancouver represents 69% of all idle cars.
  - In total 8% of all idle cars are dwelling at origin locations.
- CP
  - **CP idle car counts for 48+ hours gained significantly by 194% (+411) overnight - presently at 623 cars.**
  - The number of cars idle for 4+ days declined 13% (-13) overnight - now at 84 cars.
  - The number of cars idle for 7+ days declined 32% (-18) overnight and have now decreased for the third consecutive day - now at 38 cars.
  - Vancouver accounts for 73% of all idle cars.

- In total 69% of all idle cars are dwelling at origin locations.

### **Port Performance**

- CN and CP reported a total of 886 cars unloaded at the three major ports, now 18% below the trailing 30-day average. Three days in Week 50 unloads now behind last week's pace by about 900 unloads, reflecting reduced unloads across all three major ports - Vancouver, Thunder Bay and Prince Rupert.
- Vancouver
  - 637 unloads reported by CN and CP at the Port of Vancouver; CN - 415 and CP - 222. Three days in Week 50 unloads are tracking behind last week's performance by 650 unloads.
  - There are 1,150 cars on site at Vancouver with more than 750 cars arriving at the port in the last 24 hours.
  - CN and CP have more than 600 cars in British Columbia en route to Vancouver, with more than 450 cars at Kamloops and west, and 58% of traffic moving on CP.
- Prince Rupert
  - Prince Rupert reported 109 unloads, now behind last week's unloads after three days by about 100 unloads.
  - Loads on wheels now above 1,000 cars - presently at 1,202 cars.
  - There are more than 250 cars west of Jasper en route to Prince Rupert.
  - There are 18 cars on site at Prince Rupert with 100 cars arriving at the port in the last 24 hours.
- Thunder Bay
  - 140 unloads were reported at Thunder Bay yesterday. Three days in Week 50 unloads are tracking behind last week's pace by 150 unloads.
  - There are 400 cars on site at Thunder Bay with 300 cars arriving at the port in the prior 24 hours.
  - There are 150 cars en route to Thunder from Winnipeg and east.

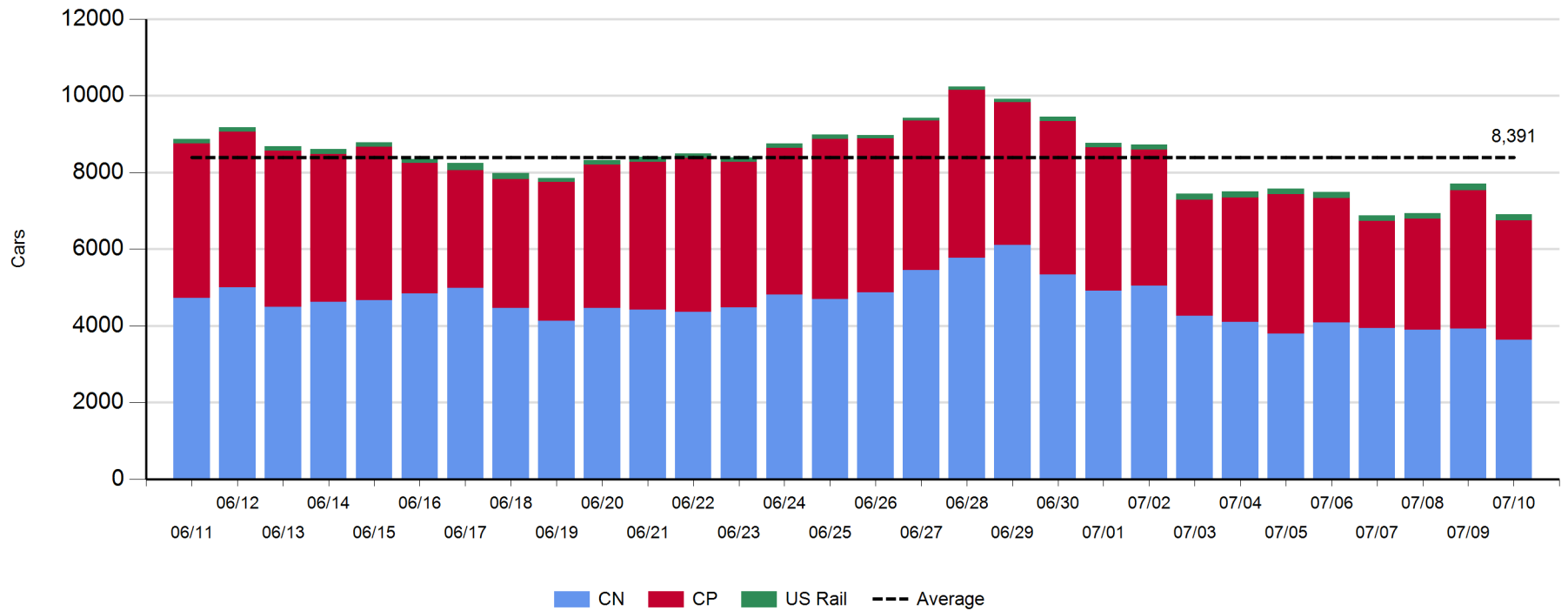
**Daily Loads on Wheels - 7/10/2019**

	E Canada	Prince Rupert	Thunder Bay	USA/MEX	Vancouver	Total
CN	260	1,202	17	91	2,062	3,632
CP	131		1,020	92	1,873	3,116
Short Line	6				63	69
US Rail				84		84
	397	1,202	1,037	267	3,998	6,901

**Change in Loads on Wheels - Prior 24 Hours**

	E Canada	Prince Rupert	Thunder Bay	USA/MEX	Vancouver	Total
CN	-38	-58	-68	-6	-121	-291
CP	0		-35	-3	-447	-485
Short Line	-1				0	-1
US Rail				-28		-28
	-39	-58	-103	-37	-568	-805

**Loads on Wheels - Prior 30 Days**

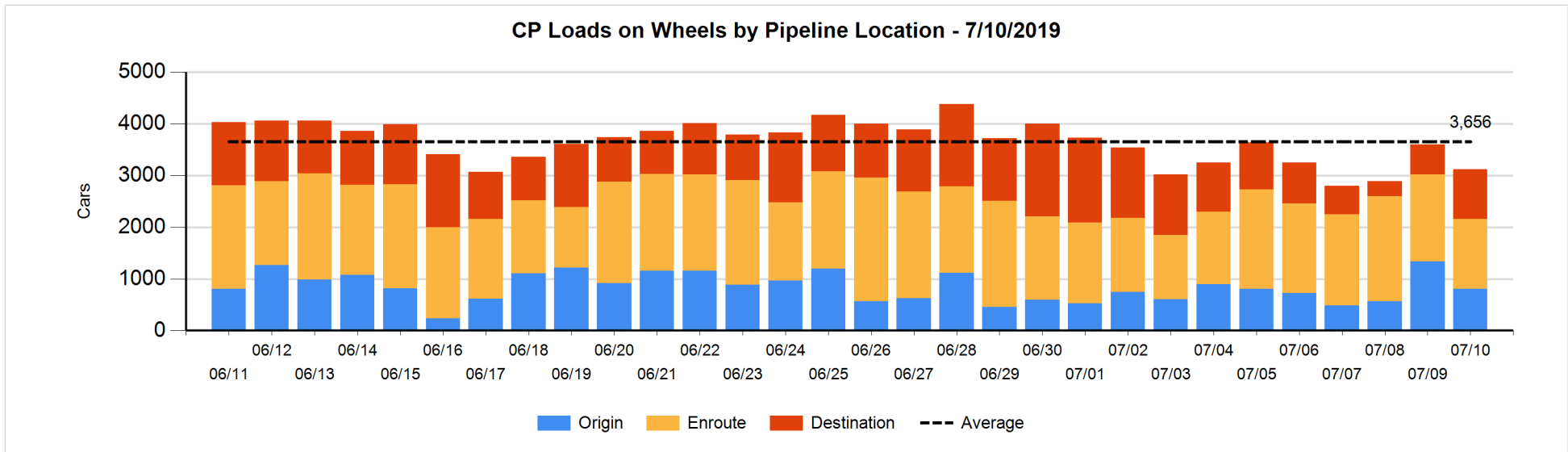
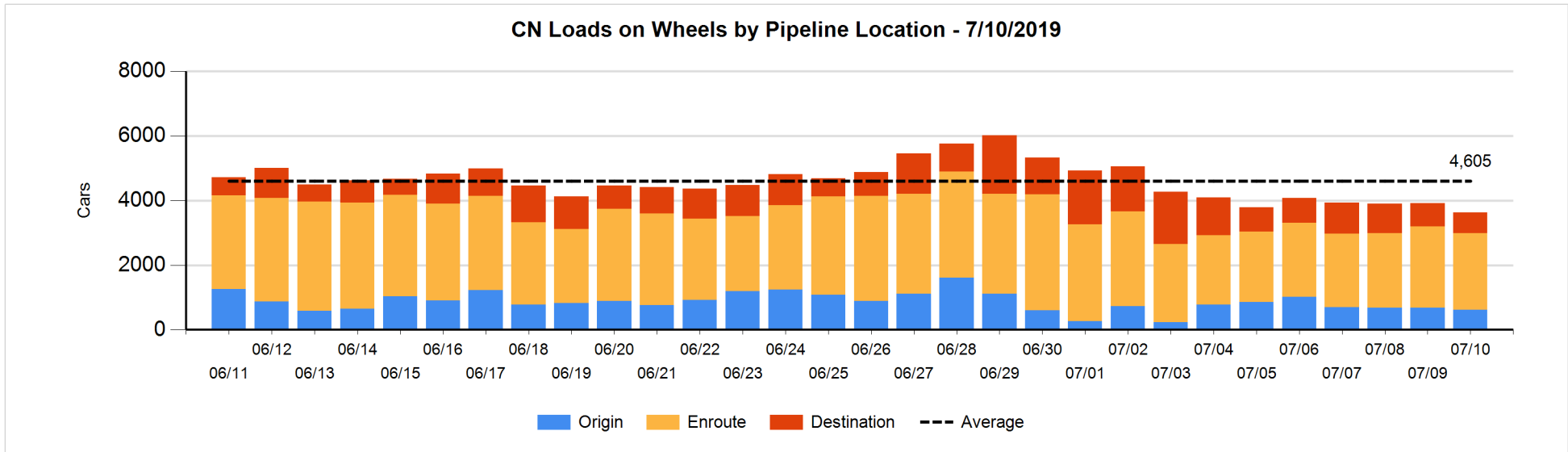


**Daily Loads on Wheels By Pipeline Location - 7/10/2019**

	E Canada	Prince Rupert	Thunder Bay	USA/MEX	Vancouver	Total
CN						
Origin	36	304	7	12	257	616
Enroute	166	880	1	66	1,259	2,372
Destination	58	18	9	13	546	644
	260	1,202	17	91	2,062	3,632
CP						
Origin	86		131	14	572	803
Enroute	45		501	51	761	1,358
Destination			388	27	540	955
	131		1,020	92	1,873	3,116
US Rail / Short Line						
Origin						
Enroute				52		52
Destination	6			32	63	101
	6			84	63	153

**Change in Daily Loads on Wheels By Pipeline Location - Prior 24 Hours**

	E Canada	Prince Rupert	Thunder Bay	USA/MEX	Vancouver	Total
CN						
Origin	0	47	0	-9	-96	-58
Enroute	-26	-94	-1	13	-43	-151
Destination	-12	-11	-67	-10	18	-82
	-38	-58	-68	-6	-121	-291
CP						
Origin	1		-396	-22	-113	-530
Enroute	-1		108	-7	-432	-332
Destination			253	26	98	377
	0		-35	-3	-447	-485
US Rail / Short Line						
Origin	-1					-1
Enroute				-25		-25
Destination	0			-3	0	-3
	-1			-28	0	-29

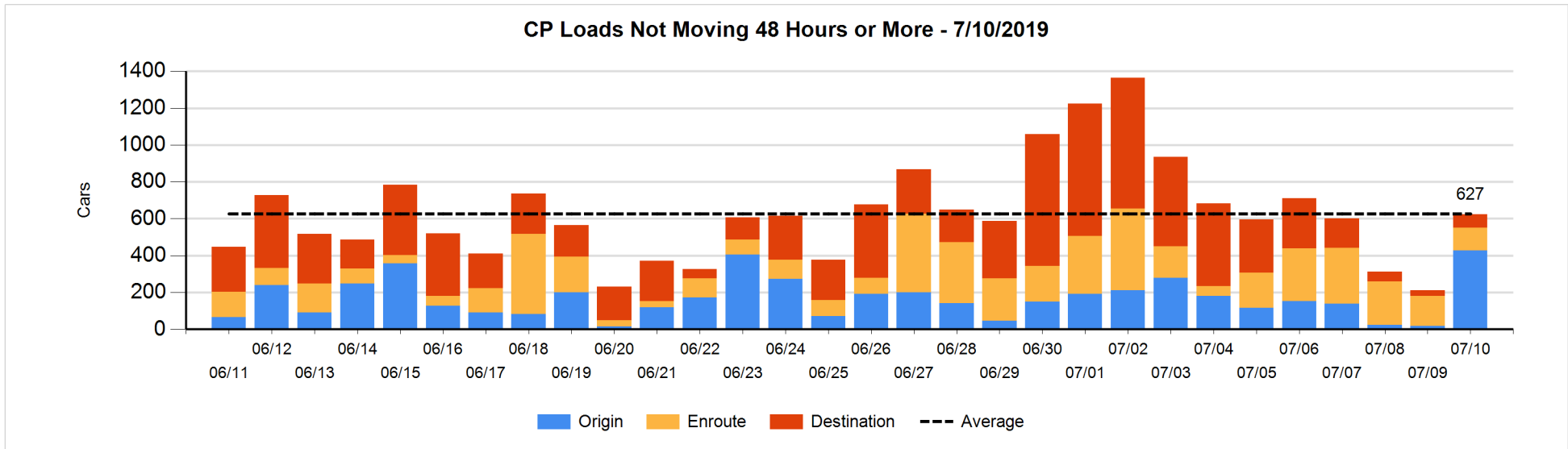
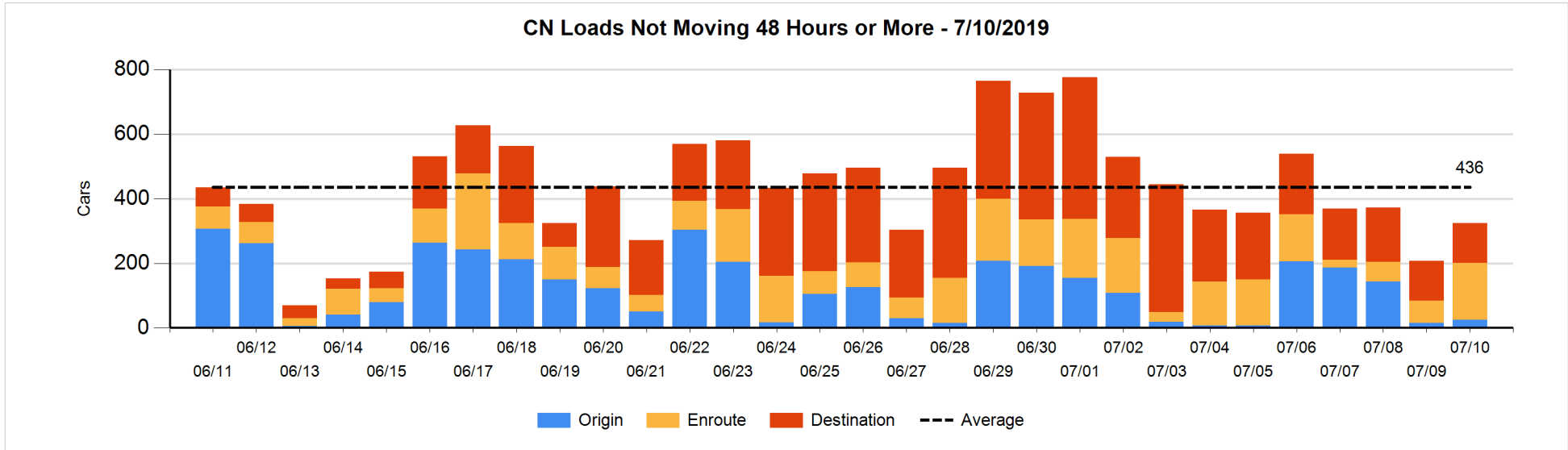


**Loads Not Moving 48 Hours or More - 7/10/2019**

	E Canada	Prince Rupert	Thunder Bay	USA/MEX	Vancouver	Total
<b>CN</b>						
Origin				6	19	25
Enroute	35	6		2	133	176
Destination	18	18	7	7	73	123
	53	24	7	15	225	324
<b>CP</b>						
Origin	29		4	3	392	428
Enroute	2		70	21	31	124
Destination			41		30	71
	31		115	24	453	623
<b>US Rail / Short Line</b>						
Origin						
Enroute				14		14
Destination	5			23	29	57
	5			37	29	71

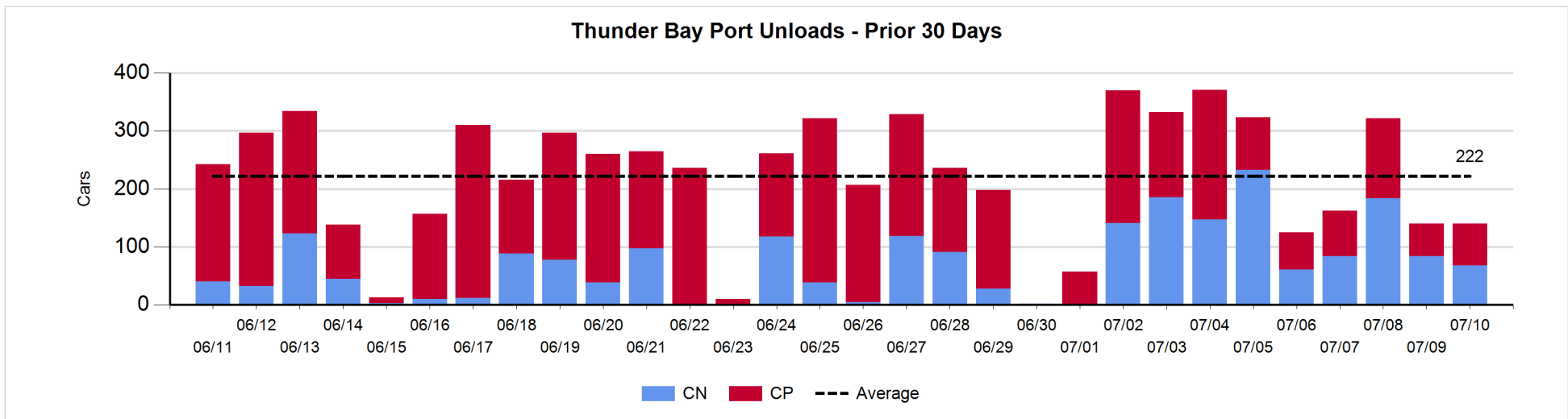
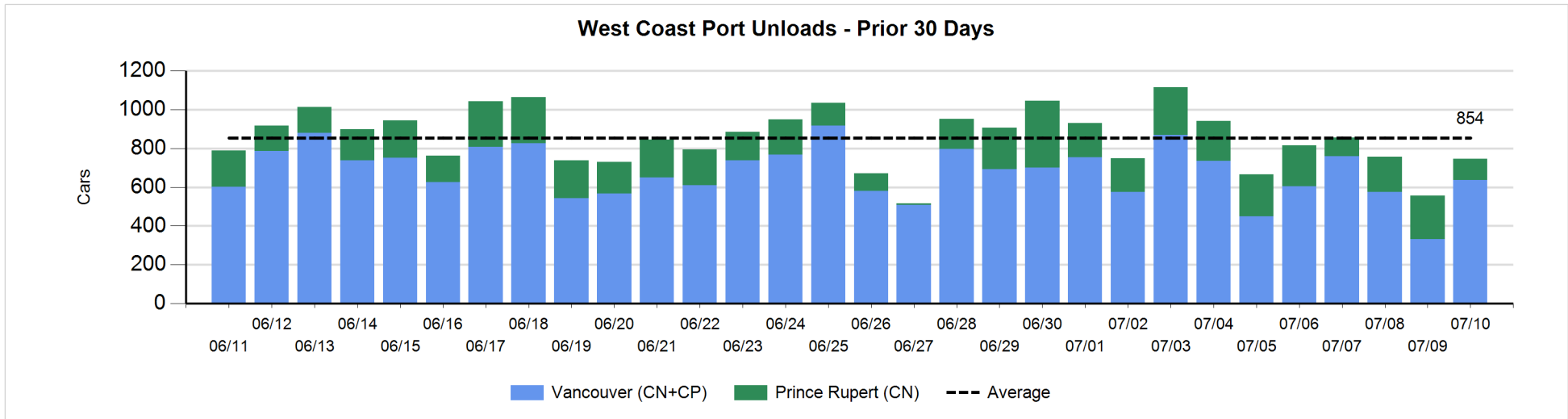
**Change in Loads Not Moving 48 Hours or More - 7/10/2019**

	E Canada	Prince Rupert	Thunder Bay	USA/MEX	Vancouver	Total
<b>CN</b>						
Origin				-9	19	10
Enroute	-9	3		-1	114	107
Destination	9	0	-7	0	-2	0
	0	3	-7	-10	131	117
<b>CP</b>						
Origin	25		0	-2	387	410
Enroute	-1		2	-24	-16	-39
Destination			18		22	40
	24		20	-26	393	411
<b>US Rail / Short Line</b>						
Origin						
Enroute				-1		-1
Destination	1			13	7	21
	1			12	7	20



**Port Unloads - 7/10/2019**

	Prince Rupert	Vancouver	West Coast Total	Thunder Bay	Total
CN	109	415	524	68	592
CP		222	222	72	294
	109	637	746	140	886





## Port Terminal Status

### Vancouver

Daily Activity for 7/10/2019

	Cars Arrived	Cars Received in Interchange	Cars Delivered in Interchange	Cars Placed for Unloading	Loads on Wheels at Destination As of 7/10/2019
CN	429	126		304	546
CP	335		136	123	540
SRY		10		12	63

### Port Unloads

	07/10	07/09	Week To Date	Last Week
CN	415	241	1,051	1,962
CP	222	92	494	2,783
SRY	11	8	40	77

## Age Profile of Loaded Cars Waiting Placement for Unloading

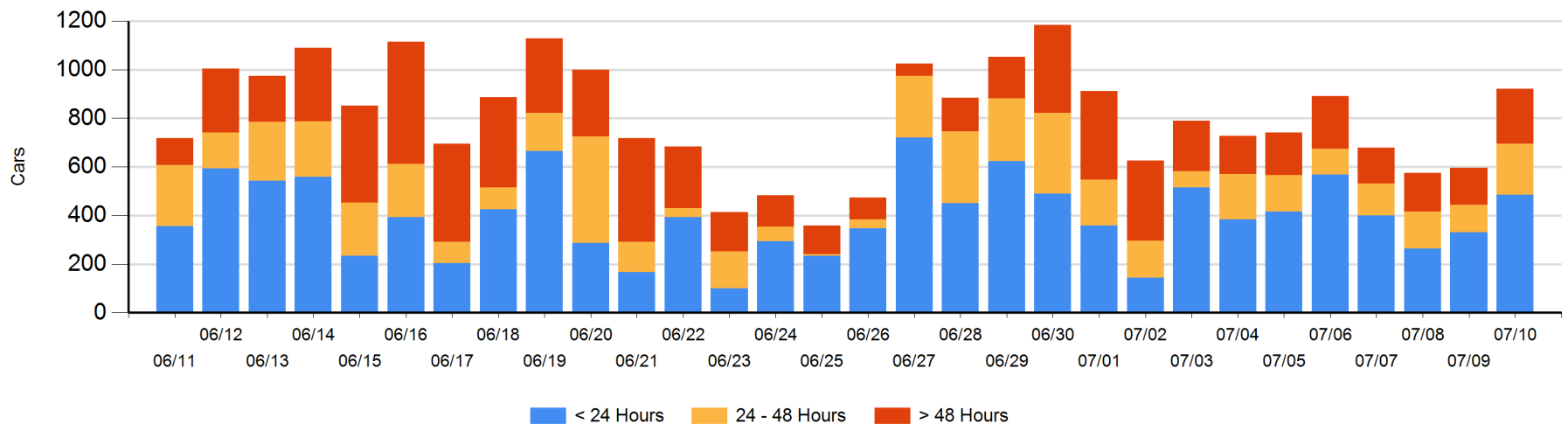
### Today

	< 24 Hrs	24 - 48 Hrs	> 48-72 Hrs	> 72 Hrs	Total On Hand
CN	274	25	31	82	412
CP	212	184	82	30	508
SRY					0

### Change in Last 24 Hours

	< 24 Hrs	24-48 Hrs	48 - 72 Hrs	> 72 Hrs
CN	239	-6	-36	52
CP	-84	102	59	-3
SRY				

Loaded Cars on Hand Vancouver Waiting for Placement - Last 30 Days All Railways



**Port Terminal Status**

**Prince Rupert**

Daily Activity for 7/10/2019

	Cars Arrived	Cars Received in Interchange	Cars Delivered in Interchange	Cars Placed for Unloading	Loads on Wheels at Destination As of 7/10/2019
CN	98			98	18

**Port Unloads**

	07/10	07/09	Week To Date	Last Week
CN	109	223	514	1,327

**Age Profile of Loaded Cars Waiting Placement for Unloading**

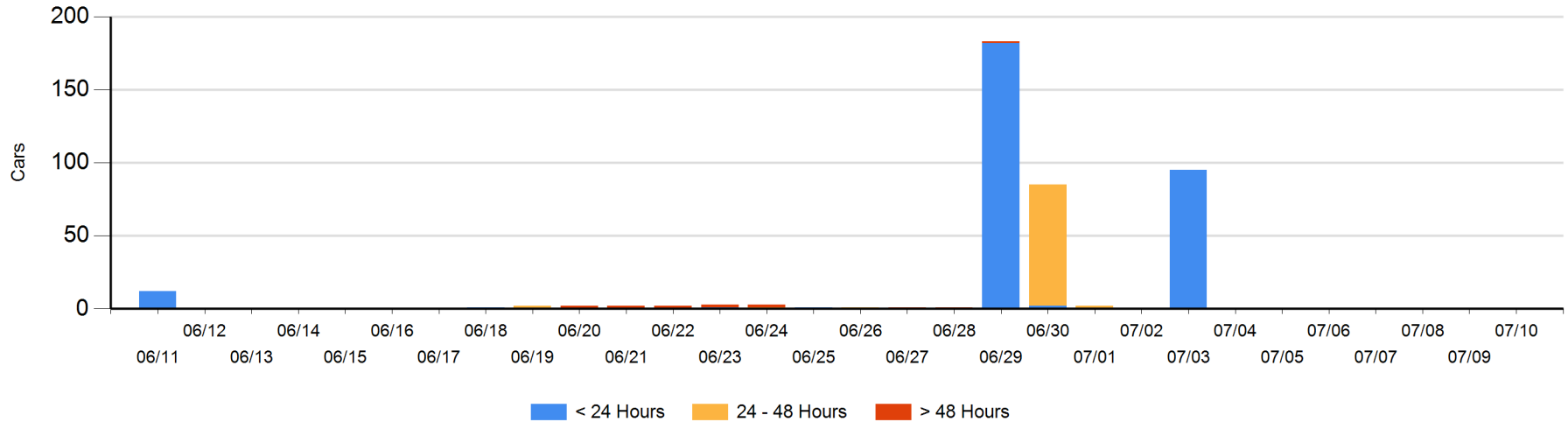
**Today**

	< 24 Hrs	24 - 48 Hrs	> 48-72 Hrs	> 72 Hrs	Total On Hand
CN					0

**Change in Last 24 Hours**

	< 24 Hrs	24-48 Hrs	48 - 72 Hrs	> 72 Hrs
CN				

Loaded Cars on Hand Prince Rupert Waiting for Placement - Last 30 Days All Railways



**Port Terminal Status**

**Thunder Bay**

Daily Activity for 7/10/2019

	Cars Arrived	Cars Received in Interchange	Cars Delivered in Interchange	Cars Placed for Unloading	Loads on Wheels at Destination As of 7/10/2019
CN	1				9
CP	303			51	388

**Port Unloads**

	07/10	07/09	Week To Date	Last Week
CN	68	84	336	851
CP	72	56	266	889

**Age Profile of Loaded Cars Waiting Placement for Unloading**

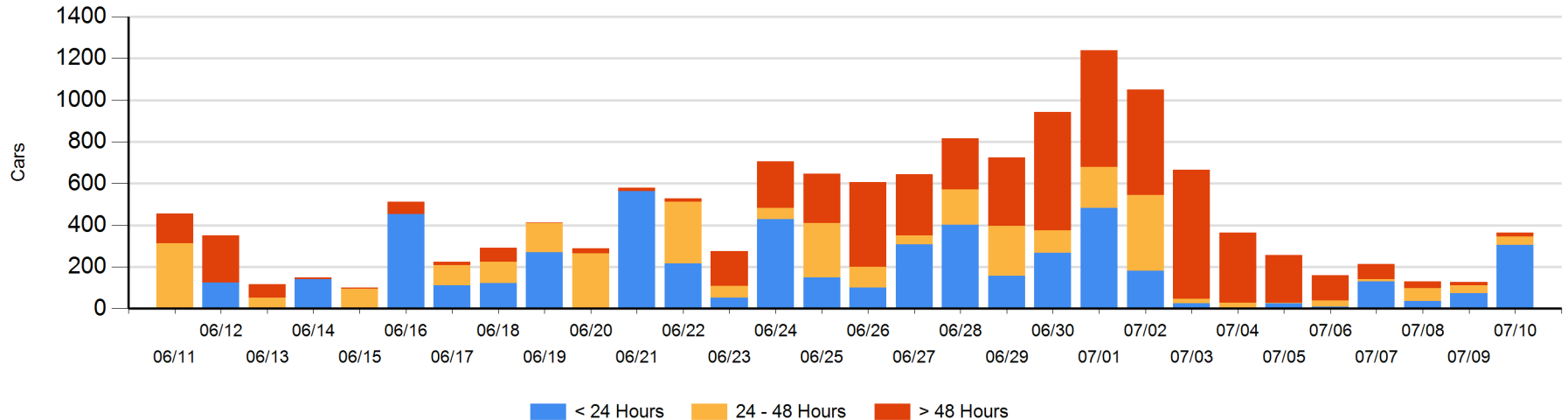
**Today**

	< 24 Hrs	24 - 48 Hrs	> 48-72 Hrs	> 72 Hrs	Total On Hand
CN	1				1
CP	303	42	18	1	364

**Change in Last 24 Hours**

	< 24 Hrs	24-48 Hrs	48 - 72 Hrs	> 72 Hrs
CN	1			
CP	229	5	17	-15

**Loaded Cars on Hand Thunder Bay Waiting for Placement - Last 30 Days All Railways**



## Measurement Definitions

Loads on Wheels	<p>Count of loaded rail cars including all rail cars that have been released loaded at origin and have not been reported by the railway as unloaded at destination.</p> <p>Counts include all rail cars (hopper cars and boxcars) moving within a pipeline.</p>
Loads Not Moving	<p>Loaded rail cars for which the railways have not reported a movement event for 48 hours or more whether the rail car is at origin, enroute or at destination.</p>
Port Unloads	<p>Count of rail cars reported by railways as unloaded at the western port destinations of Vancouver, Prince Rupert and Thunder Bay.</p> <p>Unload counts include all rail cars (hopper cars and boxcars) unloaded by all receivers including major port terminals, transloaders and other receivers.</p>
Cars Arrived	<p>Count of rail cars reported as arrived at the destination railway terminal.</p>
Cars Received in Interchange	<p>Count of rail cars received in interchange by each railway within a destination railway terminal. Interchange activity is tracked for the Vancouver and Thunder Bay pipelines as applicable.</p>
Cars Delivered in Interchange	<p>Count of rail cars delivered in interchange by each railway within a destination railway terminal. Interchange activity is tracked for the Vancouver and Thunder Bay pipelines as applicable.</p>
Cars Placed for Unloading	<p>Count of rail cars reported by the railways as placed loaded at the receiver's facility for unloading.</p>
Loads on Wheels at Destination	<p>Count of rail cars that remain under load within the destination railway terminal including rail cars that have been reported as placed for unloading but not yet reported as unloaded.</p>
Waiting Placement for Unloading	<p>Count of rail cars that have been reported as arrived at the destination railway terminal but not reported as placed for unloading by the railway.</p> <p>For the Ports of Vancouver, Prince Rupert and Thunder Bay the count of rail cars waiting placement for unloading is categorized by age – i.e. the elapsed time from arrival at destination to the current report date.</p>