

SPEED READ

- Loads on wheels fell overnight, marking reduced CP traffic offset by an increase in CN volumes. On a net basis, volumes declined due to reduced traffic in the Vancouver, Prince Rupert and USA/MEX corridors offset by higher volumes in the Thunder Bay and E. Canada corridors.
- Network fluidity deteriorated overnight, led by an increase in idle car counts on both CN and CP by 25% (+198) and 68% (+277), respectively. The total count of cars for 4+ days on both railways increased 20% (+98) overnight and have now increased for the fourth consecutive day - now at 584 cars.
- Week 50 unloads finished behind prior week's performance by 1,800 unloads, reflecting reduced unloads across all three major ports - Vancouver, Thunder Bay and Prince Rupert.

=====

Loads on Wheels

- Loads on wheels fell 3% (-233) overnight, due to reduced volumes on CP offset by higher volumes on CN - combined total at 7,872 and 5% below the trailing 30-day average.
- On a net basis, the decline in loads on wheels indicates reduced traffic in the Vancouver, Prince Rupert and USA/MEX corridors offset by higher volumes in the Thunder Bay and E. Canada corridors.
- CN volumes increased marginally by (+06) overnight, with higher volumes in the Thunder Bay and E. Canada corridors offset by reduced volumes in the Prince Rupert, Vancouver and USA/MEX corridors. System wide CN loads on wheels now at 4,081 and 10% below the trailing 30-day average.
- CP volumes declined 6% (-232) overnight, driven by a decline in volumes across all corridors - Vancouver, Thunder Bay, USA/MEX and E. Canada. CP system wide loads on wheels currently at 3,661 and 2% above the trailing 30-day average.
- Vancouver currently at 4,520, fell 3% (-140) overnight, now 5% below the trailing 30-day average.
- The Prince Rupert pipeline currently at 1,242, fell for the third consecutive day, down 8% (-115) overnight, and 1% below the trailing 30-day average.
- Thunder Bay volumes increased 2% (+30) overnight and have now increased for the fourth consecutive day - now at 1,483 and 2% above the trailing 30-day average, with 82% of traffic moving on CP.

Hopper Car Rationing

- CP rationed 55 hopper cars in week 49.

Loads Not Moving

- **The count of cars not moving for 48+ hours increased for the fifth consecutive day, up 40% (+475) overnight, marking higher counts on both CN and CP. Idle car counts now at 1,663 and 47% above the trailing 30-day average.**
- CN
 - **The count of idle cars for 48+ hours increased for the fifth consecutive day, up 25% (+198) overnight - currently at 979 cars, the highest seen in the last 30 days.**
 - The number of cars idle for 4+ days increased significantly by 77% (+189) overnight and have now increased for the third consecutive day - currently at 433 cars, the highest seen in the last 30 days.
 - The count of cars not moving for 7+ days fell 43% (-10) overnight - currently at 13 cars.
 - Vancouver represents 37% of all idle cars.
 - In total 70% of all idle cars are dwelling at origin locations.
- CP
 - **CP idle car counts for 48+ hours increased significantly by 68% (+277) overnight - currently at 684 cars.**

- The number of cars idle for 4+ days decreased 38% (-91) overnight - currently at 151 cars.
- The number of cars idle for 7+ days remained unchanged (0) overnight - currently at 43 cars.
- Vancouver accounts for 58% of all idle cars.
- In total 33% of all idle cars are dwelling at origin locations.

Port Performance

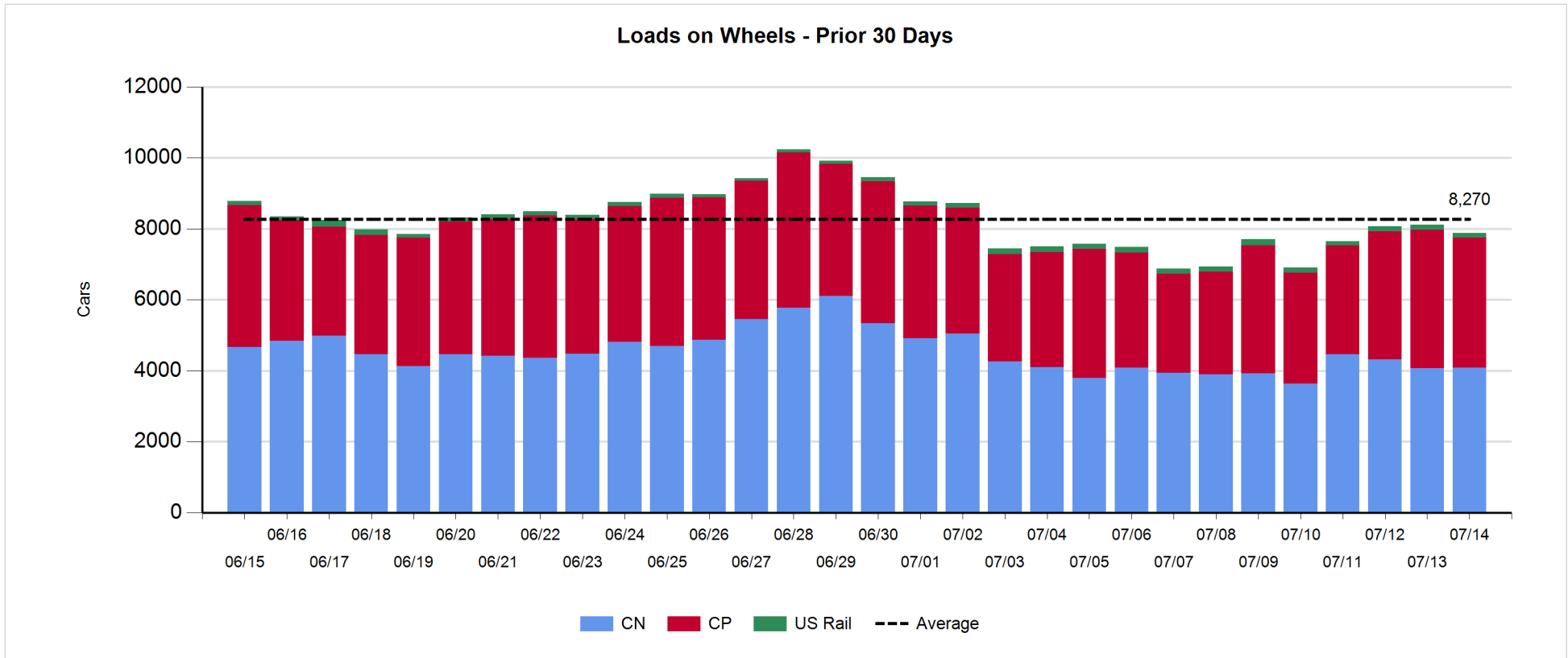
- CN and CP reported a total of 955 cars unloaded at the three major ports, now 8% below the trailing 30-day average. Week 50 unloads finished behind last week's pace by 1,800 unloads, reflecting reduced unloads across all three major ports - Vancouver, Thunder Bay and Prince Rupert.
- Vancouver
 - 563 unloads reported by CN and CP at the Port of Vancouver; CN - 364 and CP - 199. Week 50 unloads concluded behind last week's performance by 1,100 unloads.
 - There are 850 cars on site at Vancouver with more than 550 cars arriving at the port in the last 24 hours.
 - CN and CP have fewer than 700 cars in British Columbia en route to Vancouver, with more than 300 cars at Kamloops and west, and 55% of traffic moving on CP.
- Prince Rupert
 - Prince Rupert reported 210 unloads, finished behind last week's unloads by more than 150 unloads.
 - Loads on wheels now above 1,000 cars - now at 1,242 cars.
 - There are fewer than 50 cars west of Jasper en route to Prince Rupert.
 - There are more than 100 cars on site at Prince Rupert with 100 cars arriving at the port in the last 24 hours.
- Thunder Bay
 - 182 unloads were reported at Thunder Bay yesterday. Week 50 unloads ended behind last week's pace by more than 500 unloads.
 - There are 250 cars on site at Thunder Bay with 7 cars arriving at the port in the prior 24 hours.
 - There are nearly 750 cars en route to Thunder Bay from Winnipeg and east.

Daily Loads on Wheels - 7/14/2019

	E Canada	Prince Rupert	Thunder Bay	USA/MEX	Vancouver	Total
CN	348	1,242	266	82	2,143	4,081
CP	66		1,217	42	2,336	3,661
Short Line	18				41	59
US Rail				71		71
	432	1,242	1,483	195	4,520	7,872

Change in Loads on Wheels - Prior 24 Hours

	E Canada	Prince Rupert	Thunder Bay	USA/MEX	Vancouver	Total
CN	5	-115	201	-3	-82	6
CP	-4		-171	-2	-55	-232
Short Line	0				-3	-3
US Rail				-4		-4
	1	-115	30	-9	-140	-233

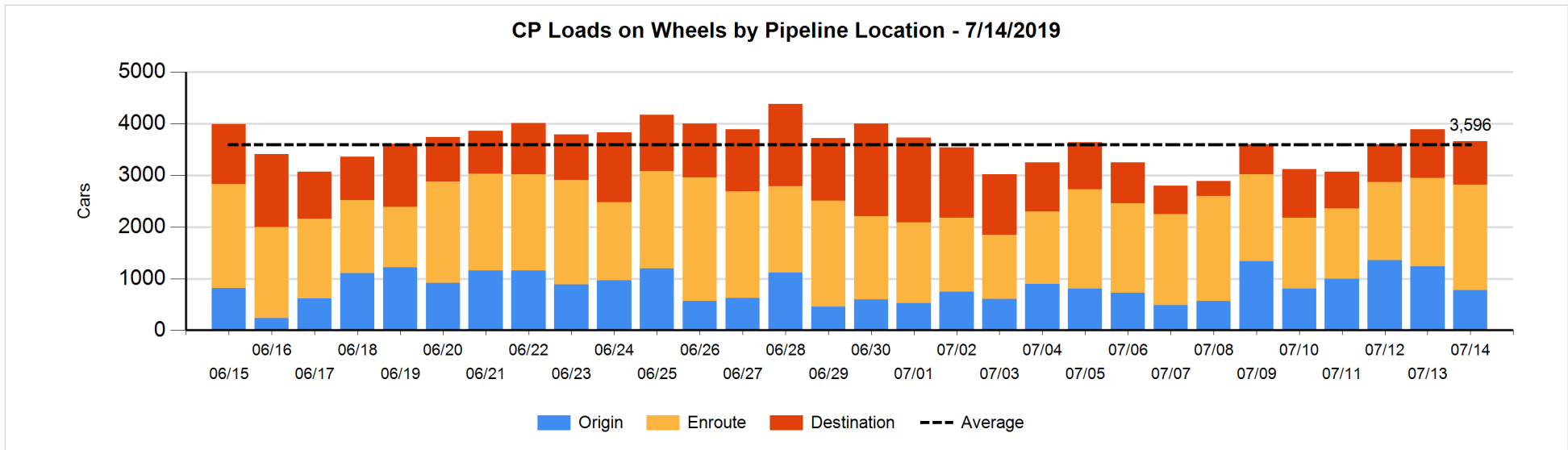
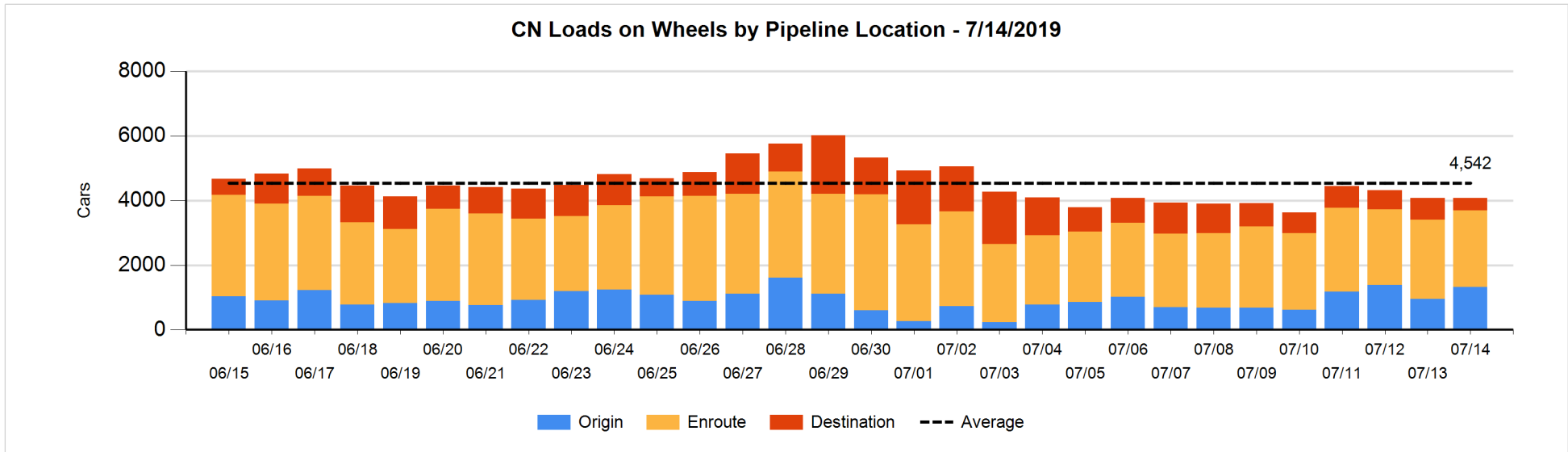


Daily Loads on Wheels By Pipeline Location - 7/14/2019

	E Canada	Prince Rupert	Thunder Bay	USA/MEX	Vancouver	Total
CN						
Origin	96	579	207		441	1,323
Enroute	239	535	48	53	1,494	2,369
Destination	13	128	11	29	208	389
	348	1,242	266	82	2,143	4,081
CP						
Origin	4			3	769	776
Enroute	62		975	38	970	2,045
Destination			242	1	597	840
	66		1,217	42	2,336	3,661
US Rail / Short Line						
Origin						
Enroute				46		46
Destination	18			25	41	84
	18			71	41	130

Change in Daily Loads on Wheels By Pipeline Location - Prior 24 Hours

	E Canada	Prince Rupert	Thunder Bay	USA/MEX	Vancouver	Total
CN						
Origin	-8	0	207	-4	170	365
Enroute	24	24	-7	5	-125	-79
Destination	-11	-139	1	-4	-127	-280
	5	-115	201	-3	-82	6
CP						
Origin	3		-348	0	-111	-456
Enroute	-7		347	-2	-15	323
Destination			-170	0	71	-99
	-4		-171	-2	-55	-232
US Rail / Short Line						
Origin						
Enroute				1		1
Destination	0			-5	-3	-8
	0			-4	-3	-7

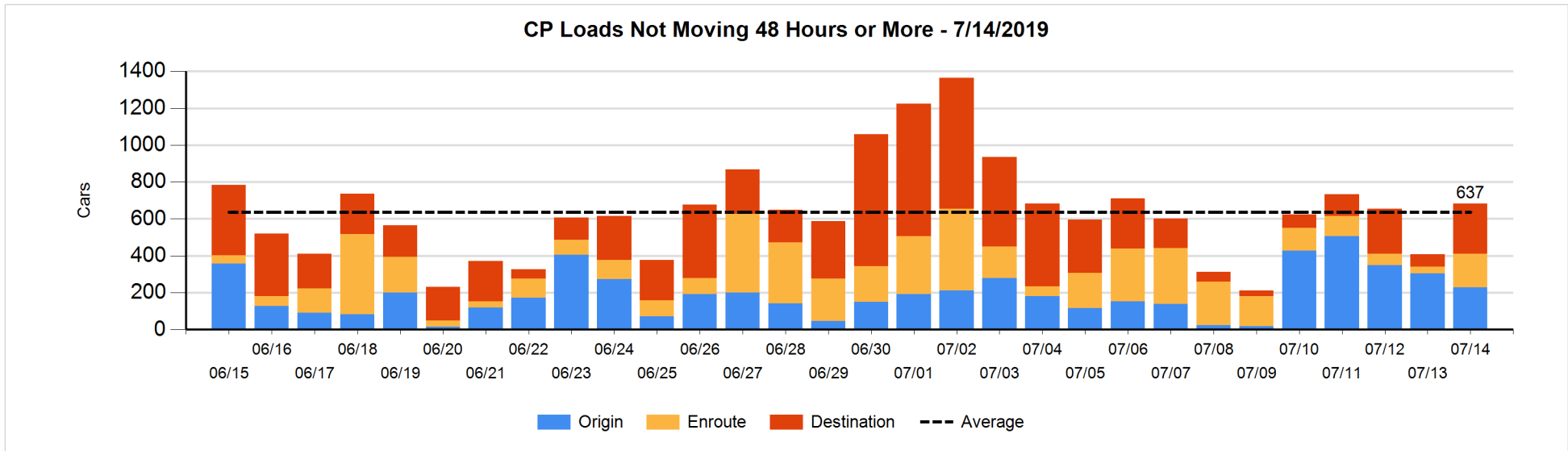
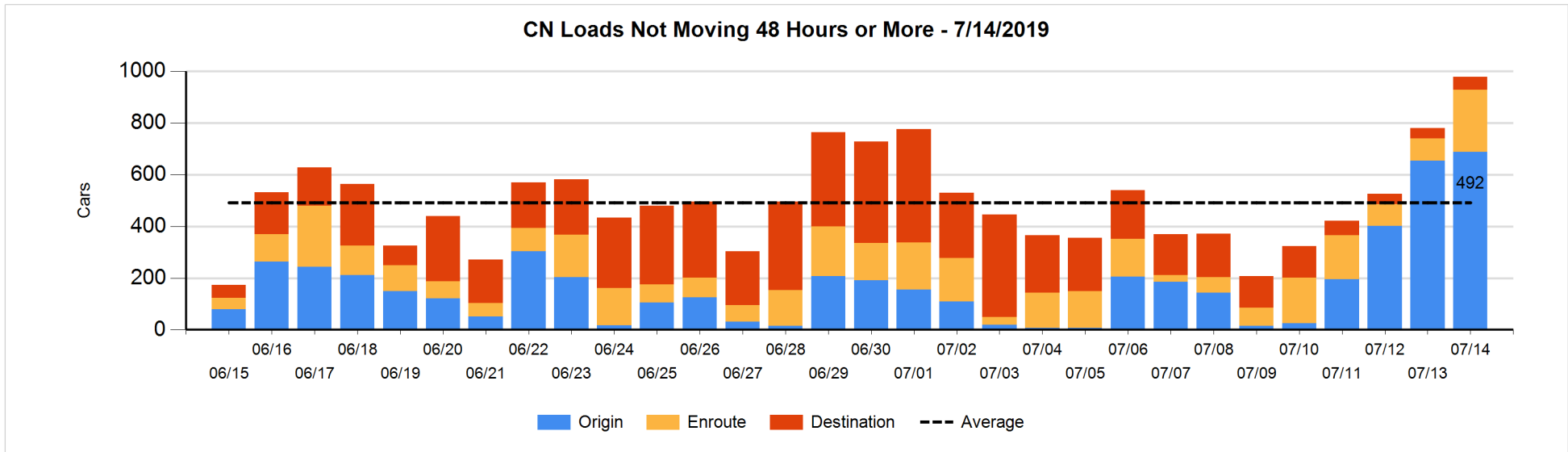


Loads Not Moving 48 Hours or More - 7/14/2019

	E Canada	Prince Rupert	Thunder Bay	USA/MEX	Vancouver	Total
CN						
Origin	1	553			134	688
Enroute	13	11		1	216	241
Destination	11		4	24	11	50
	25	564	4	25	361	979
CP						
Origin	1			3	223	227
Enroute	2		149	1	33	185
Destination			127	1	144	272
	3		276	5	400	684
US Rail / Short Line						
Origin						
Enroute				19		19
Destination	18			18	25	61
	18			37	25	80

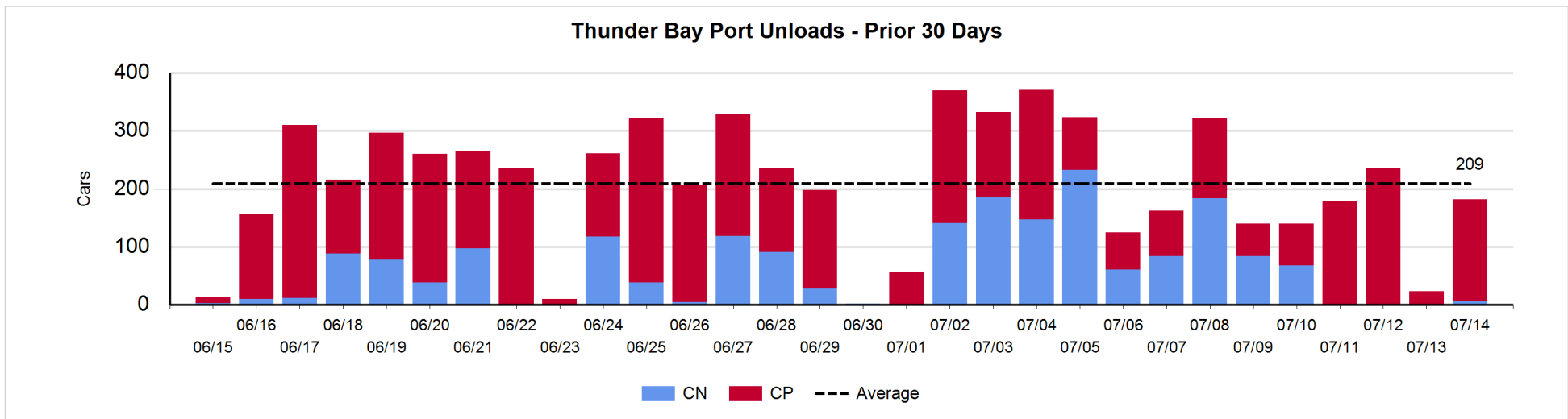
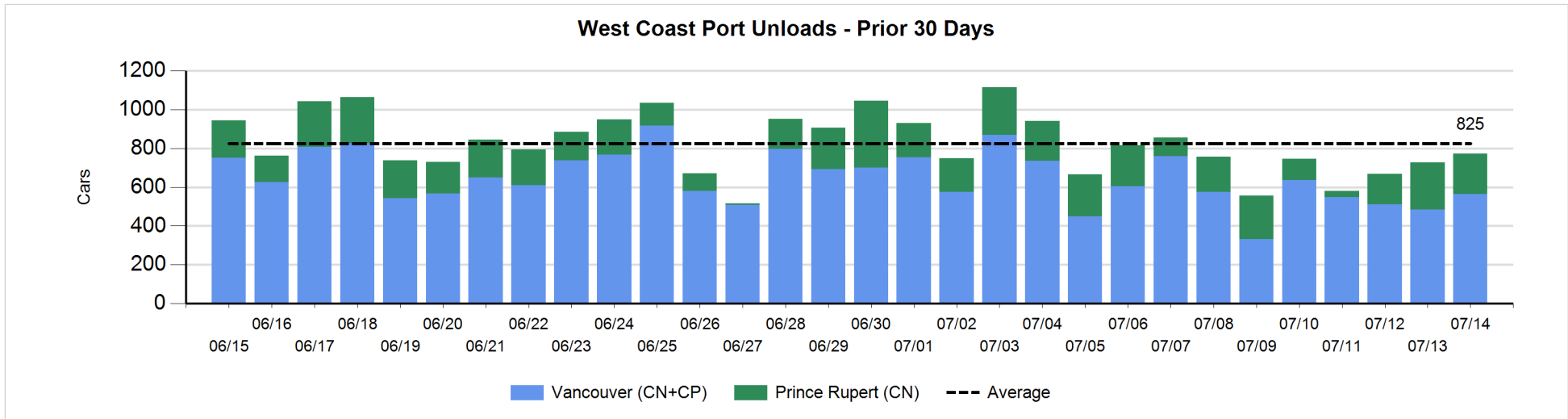
Change in Loads Not Moving 48 Hours or More - 7/14/2019

	E Canada	Prince Rupert	Thunder Bay	USA/MEX	Vancouver	Total
CN						
Origin	1	4			29	34
Enroute	0	2		-1	154	155
Destination	-4		-5	15	3	9
	-3	6	-5	14	186	198
CP						
Origin	0		-127	2	48	-77
Enroute	0		144	0	4	148
Destination			91	0	115	206
	0		108	2	167	277
US Rail / Short Line						
Origin						
Enroute				2		2
Destination	12			6	-8	10
	12			8	-8	12



Port Unloads - 7/14/2019

	Prince Rupert	Vancouver	West Coast Total	Thunder Bay	Total
CN	210	364	574	6	580
CP		199	199	176	375
	210	563	773	182	955



Port Terminal Status

Vancouver

Daily Activity for 7/14/2019

	Cars Arrived	Cars Received in Interchange	Cars Delivered in Interchange	Cars Placed for Unloading	Loads on Wheels at Destination As of 7/14/2019
CN	538	335	146	253	208
CP	25	146	335	199	597
SRY				6	41

Port Unloads

	07/14	07/13	Week To Date	Last Week
CN	364	300	2,346	1,962
CP	199	183	1,304	2,783
SRY	3	8	67	77

Age Profile of Loaded Cars Waiting Placement for Unloading

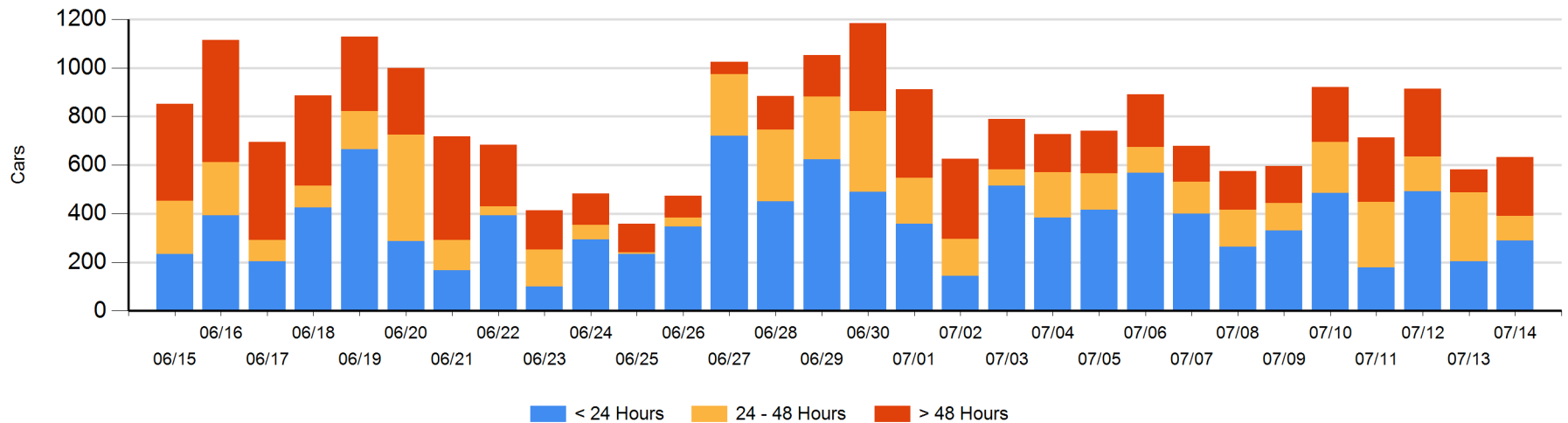
Today

	< 24 Hrs	24 - 48 Hrs	> 48-72 Hrs	> 72 Hrs	Total On Hand
CN	267	93	149	46	555
CP	23	8	1	46	78
SRY					0

Change in Last 24 Hours

	< 24 Hrs	24-48 Hrs	48 - 72 Hrs	> 72 Hrs
CN	70	-162	148	-1
CP	15	-19	-13	13
SRY				

Loaded Cars on Hand Vancouver Waiting for Placement - Last 30 Days All Railways



Port Terminal Status

Prince Rupert

Daily Activity for 7/14/2019

	Cars Arrived	Cars Received in Interchange	Cars Delivered in Interchange	Cars Placed for Unloading	Loads on Wheels at Destination As of 7/14/2019
CN	101			101	128

Port Unloads

	07/14	07/13	Week To Date	Last Week
CN	210	243	1,158	1,327

Age Profile of Loaded Cars Waiting Placement for Unloading

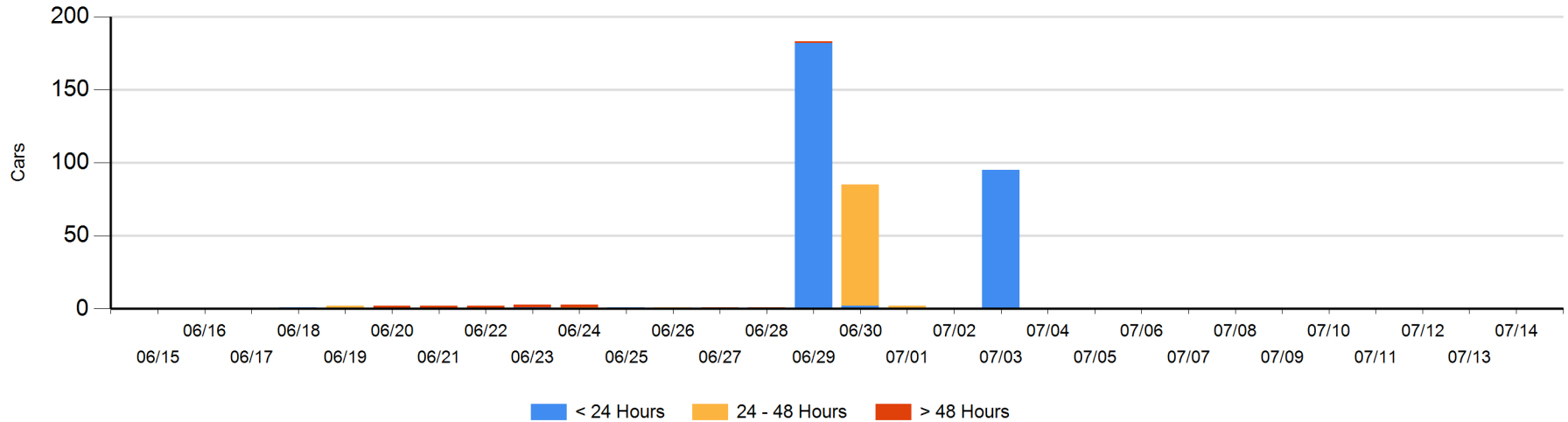
Today

	< 24 Hrs	24 - 48 Hrs	> 48-72 Hrs	> 72 Hrs	Total On Hand
CN					0

Change in Last 24 Hours

	< 24 Hrs	24-48 Hrs	48 - 72 Hrs	> 72 Hrs
CN				

Loaded Cars on Hand Prince Rupert Waiting for Placement - Last 30 Days All Railways



Port Terminal Status

Thunder Bay

Daily Activity for 7/14/2019

	Cars Arrived	Cars Received in Interchange	Cars Delivered in Interchange	Cars Placed for Unloading	Loads on Wheels at Destination As of 7/14/2019
CN	7				11
CP				217	242

Port Unloads

	07/14	07/13	Week To Date	Last Week
CN	6		342	851
CP	176	23	879	889

Age Profile of Loaded Cars Waiting Placement for Unloading

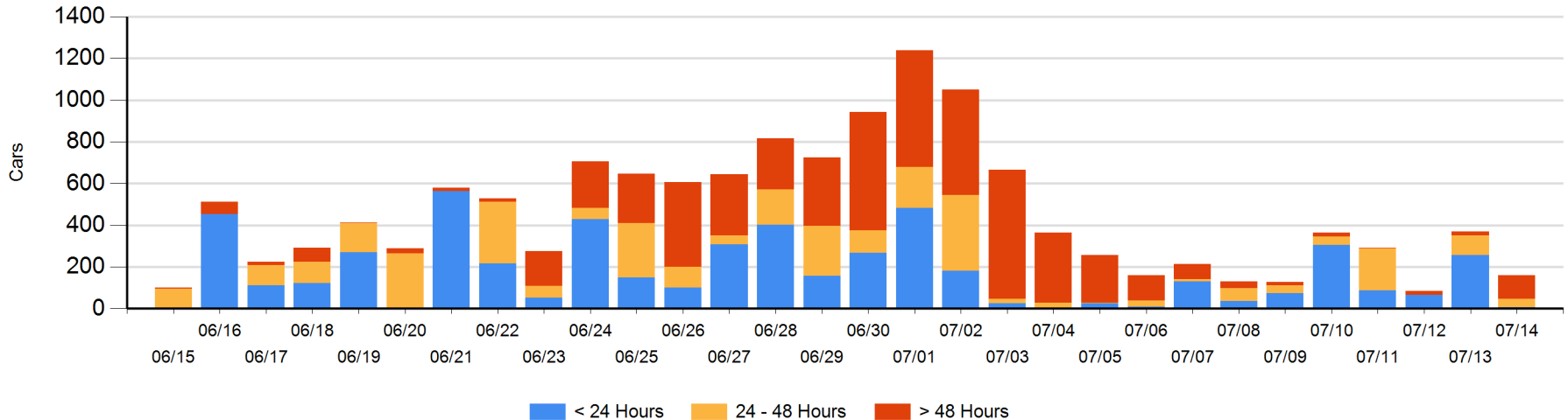
Today

	< 24 Hrs	24 - 48 Hrs	> 48-72 Hrs	> 72 Hrs	Total On Hand
CN	7		1	1	9
CP		40	94	16	150

Change in Last 24 Hours

	< 24 Hrs	24-48 Hrs	48 - 72 Hrs	> 72 Hrs
CN	7	-1	1	0
CP	-257	-54	94	-1

Loaded Cars on Hand Thunder Bay Waiting for Placement - Last 30 Days All Railways



Measurement Definitions

Loads on Wheels	<p>Count of loaded rail cars including all rail cars that have been released loaded at origin and have not been reported by the railway as unloaded at destination.</p> <p>Counts include all rail cars (hopper cars and boxcars) moving within a pipeline.</p>
Loads Not Moving	<p>Loaded rail cars for which the railways have not reported a movement event for 48 hours or more whether the rail car is at origin, enroute or at destination.</p>
Port Unloads	<p>Count of rail cars reported by railways as unloaded at the western port destinations of Vancouver, Prince Rupert and Thunder Bay.</p> <p>Unload counts include all rail cars (hopper cars and boxcars) unloaded by all receivers including major port terminals, transloaders and other receivers.</p>
Cars Arrived	<p>Count of rail cars reported as arrived at the destination railway terminal.</p>
Cars Received in Interchange	<p>Count of rail cars received in interchange by each railway within a destination railway terminal. Interchange activity is tracked for the Vancouver and Thunder Bay pipelines as applicable.</p>
Cars Delivered in Interchange	<p>Count of rail cars delivered in interchange by each railway within a destination railway terminal. Interchange activity is tracked for the Vancouver and Thunder Bay pipelines as applicable.</p>
Cars Placed for Unloading	<p>Count of rail cars reported by the railways as placed loaded at the receiver's facility for unloading.</p>
Loads on Wheels at Destination	<p>Count of rail cars that remain under load within the destination railway terminal including rail cars that have been reported as placed for unloading but not yet reported as unloaded.</p>
Waiting Placement for Unloading	<p>Count of rail cars that have been reported as arrived at the destination railway terminal but not reported as placed for unloading by the railway.</p> <p>For the Ports of Vancouver, Prince Rupert and Thunder Bay the count of rail cars waiting placement for unloading is categorized by age – i.e. the elapsed time from arrival at destination to the current report date.</p>