

SPEED READ

- Loads on wheels gained overnight, marking a rise in both CN and CP volumes. On a net basis, volumes rose due to higher traffic in the Vancouver, USA/MEX and Thunder Bay corridors offset by reduced traffic in the Prince Rupert and E. Canada corridors.
- Network fluidity deteriorated overnight, led by a rise in idle car counts on CN by 8% (+81) offset by a decline in idle car counts on CP by 10% (-72). The total count of cars for 4+ days on both railways gained 45% (+263) overnight and have now increased for the fifth consecutive day - currently at 851 cars.
- One day in Week 51 unloads now behind prior week's performance by 250 unloads, reflecting lower unloads across all three major ports - Vancouver, Thunder Bay and Prince Rupert.

Loads on Wheels

- Loads on wheels gained 6% (+477) overnight, due to higher volumes on both CN and CP - combined total at 8,402 and 2% above the trailing 30-day average.
- On a net basis, the rise in loads on wheels indicates higher traffic in the Vancouver, USA/MEX and Thunder Bay corridors offset by reduced traffic in the Prince Rupert and E. Canada corridors.
- CN volumes gained 9% (+357) overnight, with higher traffic in the Vancouver and USA/MEX corridors offset by reduced traffic in the Prince Rupert, Thunder Bay and E. Canada corridors. System wide CN loads on wheels currently at 4,438 and 2% below the trailing 30-day average.
- CP volumes gained 4% (+133) overnight, driven by a rise in traffic across all corridors other than USA/MEX. CP system wide loads on wheels now at 3,847 and 7% above the trailing 30-day average.
- Vancouver presently at 5,018, gained 10% (+449) overnight, now 5% above the trailing 30-day average.
- The Prince Rupert pipeline presently at 1,234, declined for the fourth consecutive day, down 1% (-8) overnight, and 1% below the trailing 30-day average.
- Thunder Bay volumes increased for the fifth consecutive day, up 1% (+10) overnight - presently at 1,497 and 3% above the trailing 30-day average, with 83% of traffic moving on CP.

Hopper Car Rationing

- CP rationed 55 hopper cars in week 49.

Loads Not Moving

- **The count of cars not moving for 48+ hours increased for the sixth consecutive day, up 1% (+09) overnight, reflecting higher counts on CN offset by reduced counts on CP. Idle car counts presently at 1,676 and 45% above the trailing 30-day average.**
- CN
 - **The count of idle cars for 48+ hours gained for the sixth consecutive day, up 8% (+81) overnight - currently at 1,060 cars, the highest seen in the last 30 days.**
 - The number of cars idle for 4+ days rose significantly by 60% (+260) overnight and have now increased for the fourth consecutive day - currently at 693 cars, the highest seen in the last 30 days.
 - The count of cars not moving for 7+ days gained significantly by 54% (+7) overnight - presently at 20 cars.
 - Vancouver represents 30% of all idle cars.
 - In total 82% of all idle cars are dwelling at origin locations.
- CP
 - **CP idle car counts for 48+ hours declined 10% (-72) overnight - currently at 616 cars.**

- The number of cars idle for 4+ days gained 2% (+3) overnight - now at 158 cars.
- The number of cars idle for 7+ days gained 42% (+18) overnight - presently at 61 cars.
- Vancouver accounts for 81% of all idle cars.
- In total 54% of all idle cars are dwelling at origin locations.

Port Performance

- CN and CP reported a total of 843 cars unloaded at the three major ports, now 18% below the trailing 30-day average. One day in Week 51 unloads now behind last week's pace by 250 unloads, reflecting lower unloads across all three major ports - Vancouver, Thunder Bay and Prince Rupert.
- Vancouver
 - 541 unloads reported by CN and CP at the Port of Vancouver; CN - 369 and CP - 172. One day in Week 51 unloads are tracking behind last week's performance by 50 unloads.
 - There are about 900 cars on site at Vancouver with around 550 cars arriving at the port in the last 24 hours.
 - CN and CP have more than 850 cars in British Columbia en route to Vancouver, with more than 250 cars at Kamloops and west, and 64% of traffic moving on CP.
- Prince Rupert
 - Prince Rupert reported 129 unloads, now behind last week's unloads after one day by 50 unloads.
 - Loads on wheels now above 1,000 cars - currently at 1,234 cars.
 - There are about 350 cars west of Jasper en route to Prince Rupert.
 - There are zero cars on site at Prince Rupert with zero cars arriving at the port in the last 24 hours.
- Thunder Bay
 - 173 unloads were reported at Thunder Bay yesterday. One day in Week 51 unloads are tracking behind last week's pace by 150 unloads.
 - There are more than 650 cars on site at Thunder Bay with 600 cars arriving at the port in the prior 24 hours.
 - There are 350 cars en route to Thunder Bay from Winnipeg and east.

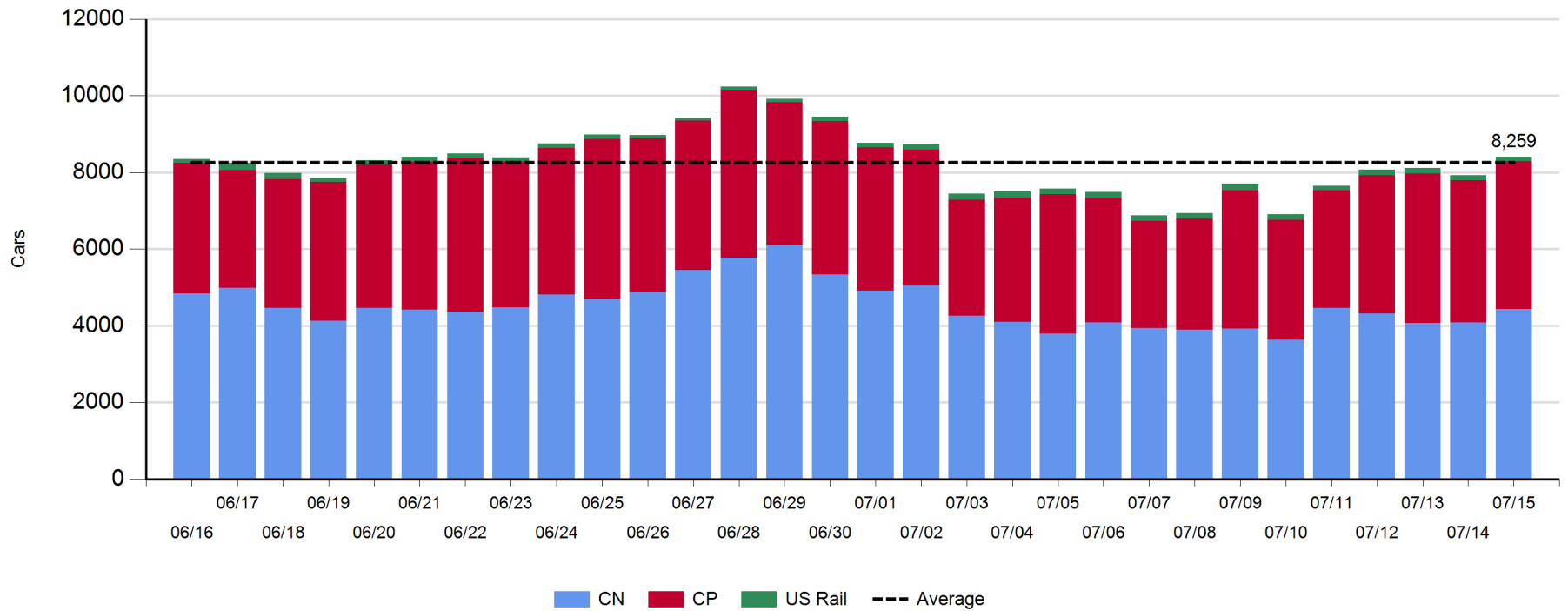
Daily Loads on Wheels - 7/15/2019

	E Canada	Prince Rupert	Thunder Bay	USA/MEX	Vancouver	Total
CN	346	1,234	260	125	2,473	4,438
CP	68		1,237	27	2,515	3,847
Short Line	10				30	40
US Rail				77		77
	424	1,234	1,497	229	5,018	8,402

Change in Loads on Wheels - Prior 24 Hours

	E Canada	Prince Rupert	Thunder Bay	USA/MEX	Vancouver	Total
CN	-2	-8	-6	43	330	357
CP	2		16	-15	130	133
Short Line	-8				-11	-19
US Rail				6		6
	-8	-8	10	34	449	477

Loads on Wheels - Prior 30 Days

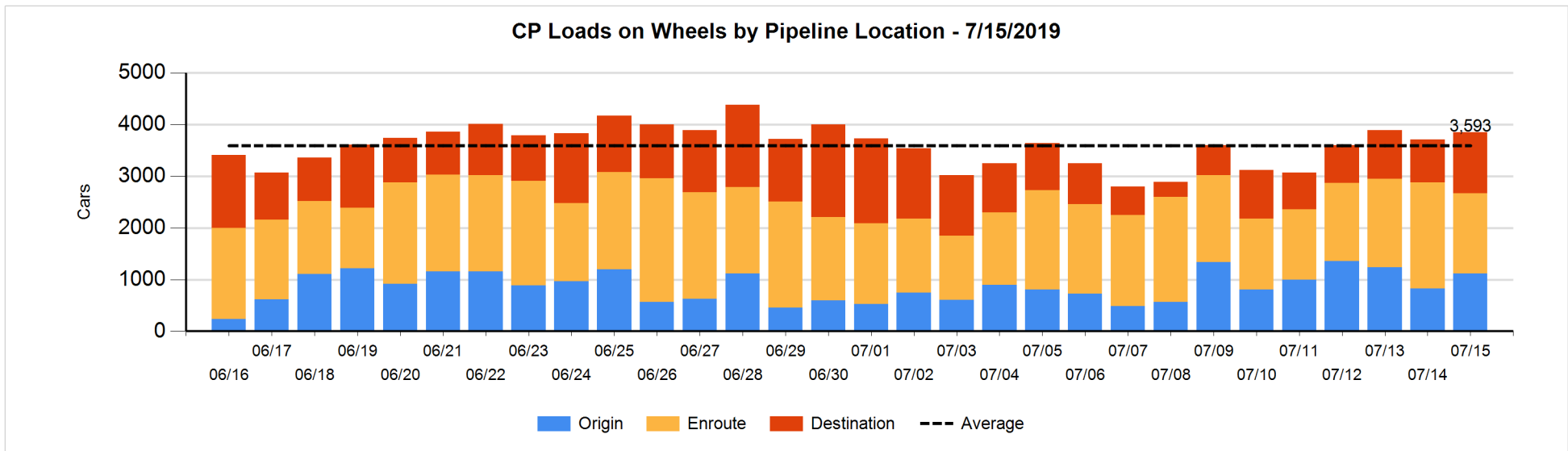
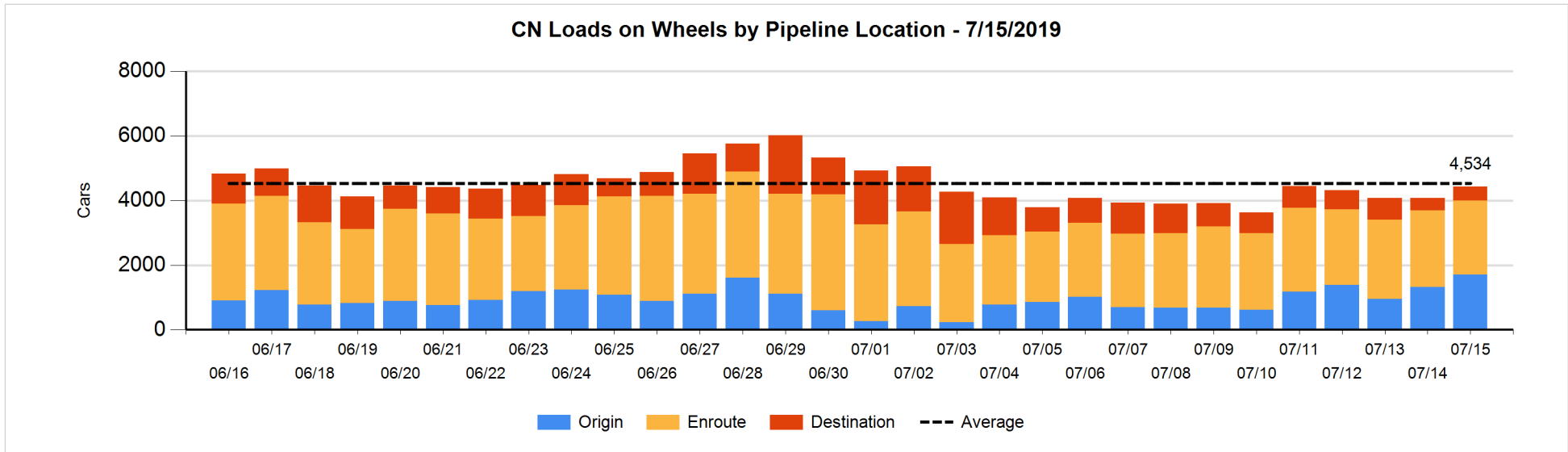


Daily Loads on Wheels By Pipeline Location - 7/15/2019

	E Canada	Prince Rupert	Thunder Bay	USA/MEX	Vancouver	Total
CN						
Origin	103	700	100	56	751	1,710
Enroute	211	534	156	57	1,332	2,290
Destination	32		4	12	390	438
	346	1,234	260	125	2,473	4,438
CP						
Origin	3		186	5	920	1,114
Enroute	24		382	21	1,132	1,559
Destination	41		669	1	463	1,174
	68		1,237	27	2,515	3,847
US Rail / Short Line						
Origin						
Enroute				45		45
Destination	10			32	30	72
	10			77	30	117

Change in Daily Loads on Wheels By Pipeline Location - Prior 24 Hours

	E Canada	Prince Rupert	Thunder Bay	USA/MEX	Vancouver	Total
CN						
Origin	7	121	-107	56	310	387
Enroute	-28	-1	108	4	-162	-79
Destination	19	-128	-7	-17	182	49
	-2	-8	-6	43	330	357
CP						
Origin	-1		182	2	102	285
Enroute	-38		-593	-17	162	-486
Destination	41		427	0	-134	334
	2		16	-15	130	133
US Rail / Short Line						
Origin						
Enroute				-1		-1
Destination	-8			7	-11	-12
	-8			6	-11	-13

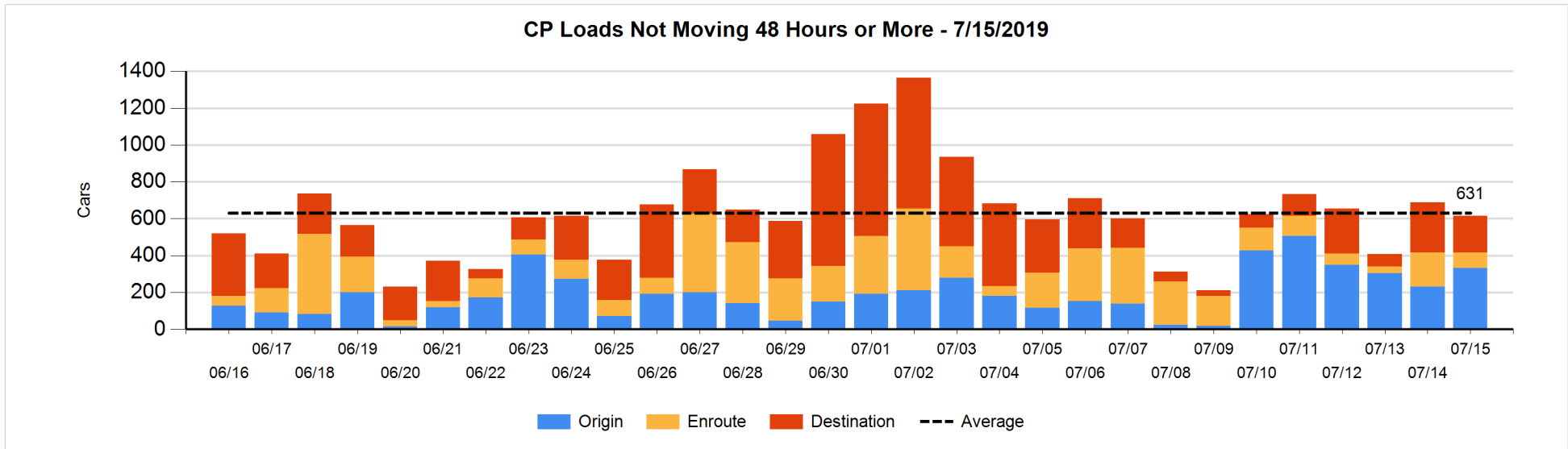
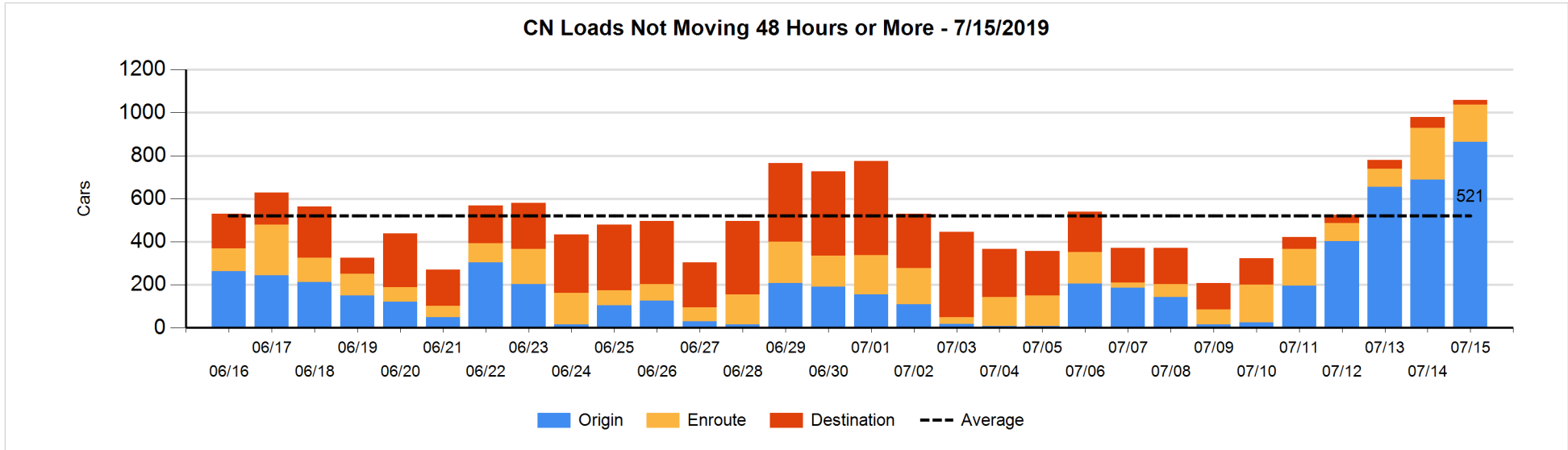


Loads Not Moving 48 Hours or More - 7/15/2019

	E Canada	Prince Rupert	Thunder Bay	USA/MEX	Vancouver	Total
CN						
Origin	96	579			190	865
Enroute	39	14		1	117	171
Destination	3		4	3	14	24
	138	593	4	4	321	1060
CP						
Origin	1		4	3	325	333
Enroute	3		46		33	82
Destination			62	1	138	201
	4		112	4	496	616
US Rail / Short Line						
Origin						
Enroute				18		18
Destination	10			20	19	49
	10			38	19	67

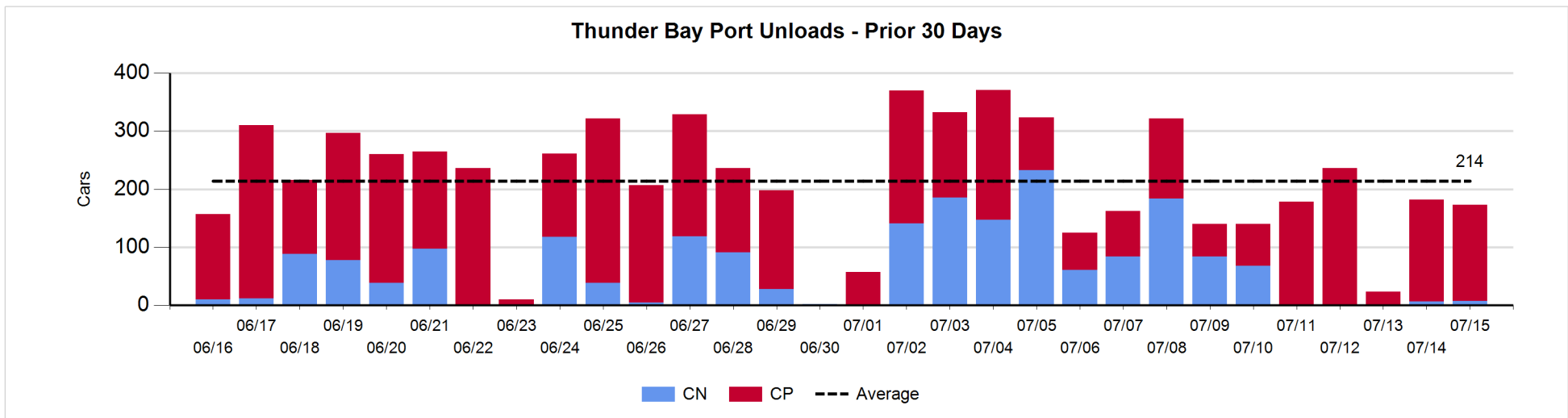
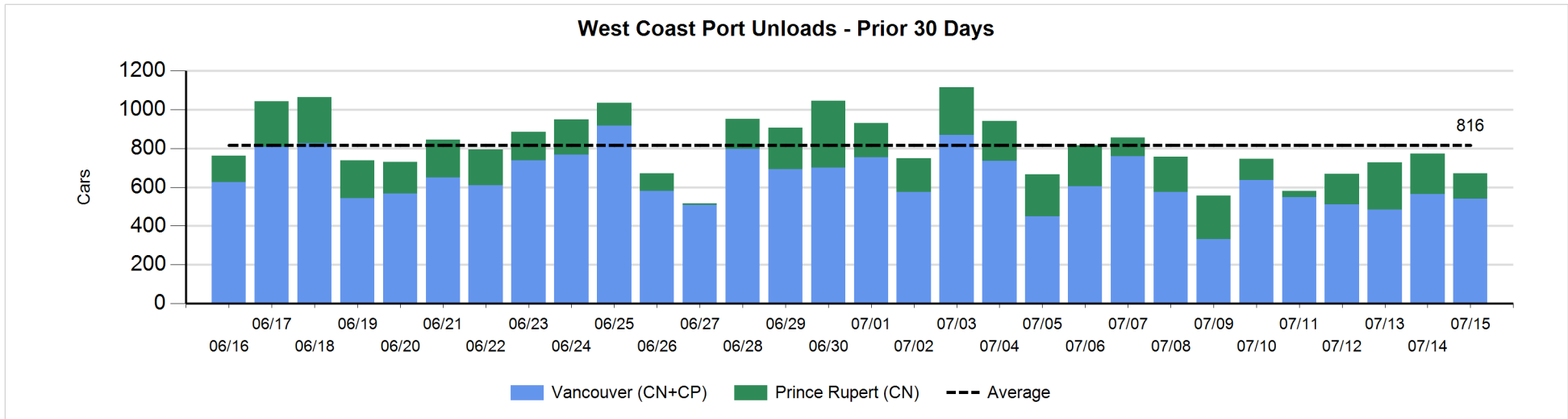
Change in Loads Not Moving 48 Hours or More - 7/15/2019

	E Canada	Prince Rupert	Thunder Bay	USA/MEX	Vancouver	Total
CN						
Origin	95	26			56	177
Enroute	26	3		0	-99	-70
Destination	-8		0	-21	3	-26
	113	29	0	-21	-40	81
CP						
Origin	0		0	0	102	102
Enroute	1		-103	-1	0	-103
Destination			-65	0	-6	-71
	1		-168	-1	96	-72
US Rail / Short Line						
Origin						
Enroute				-1		-1
Destination	-8			2	-6	-12
	-8			1	-6	-13



Port Unloads - 7/15/2019

	Prince Rupert	Vancouver	West Coast Total	Thunder Bay	Total
CN	129	369	498	7	505
CP		172	172	166	338
	129	541	670	173	843



Port Terminal Status

Vancouver

Daily Activity for 7/15/2019

	Cars Arrived	Cars Received in Interchange	Cars Delivered in Interchange	Cars Placed for Unloading	Loads on Wheels at Destination As of 7/15/2019
CN	272	137		491	390
CP	262		148	173	463
SRY		11		6	30

Port Unloads

	07/15	07/14	Week To Date	Last Week
CN	369	364	369	2,346
CP	172	199	172	1,304
SRY	13	3	13	67

Age Profile of Loaded Cars Waiting Placement for Unloading

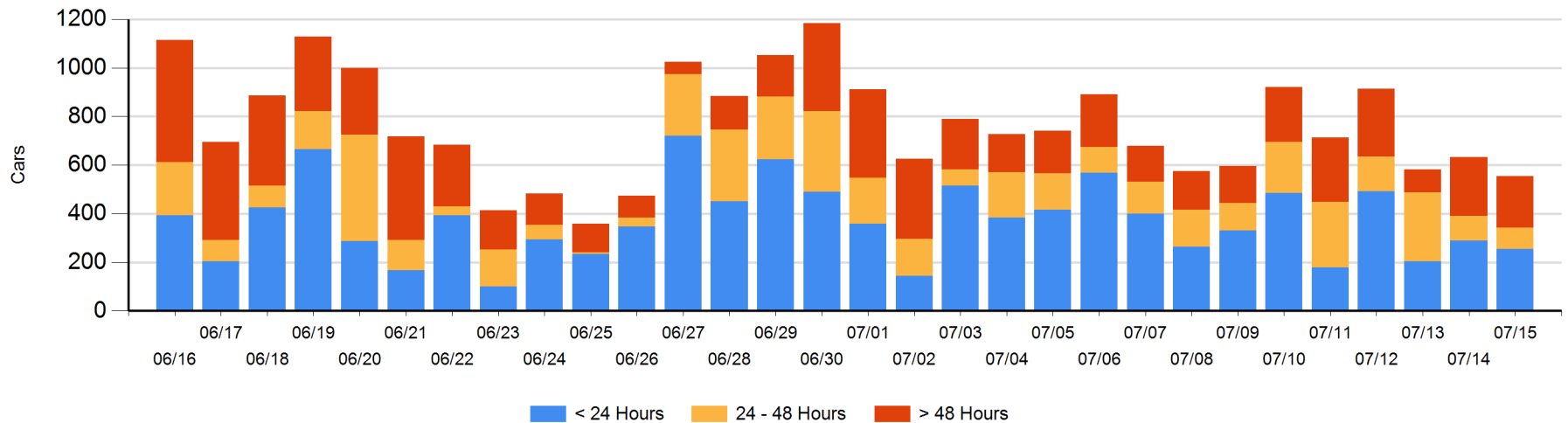
Today

	< 24 Hrs	24 - 48 Hrs	> 48-72 Hrs	> 72 Hrs	Total On Hand
CN	96	44	6	157	303
CP	158	45	8	41	252
SRY					0

Change in Last 24 Hours

	< 24 Hrs	24-48 Hrs	48 - 72 Hrs	> 72 Hrs
CN	-171	-49	-143	111
CP	135	37	7	-5
SRY				

Loaded Cars on Hand Vancouver Waiting for Placement - Last 30 Days All Railways



Port Terminal Status

Prince Rupert

Daily Activity for 7/15/2019

Cars Arrived	Cars Received in Interchange	Cars Delivered in Interchange	Cars Placed for Unloading	Loads on Wheels at Destination As of 7/15/2019
CN				

Port Unloads

	07/15	07/14	Week To Date	Last Week
CN	129	210	129	1,158

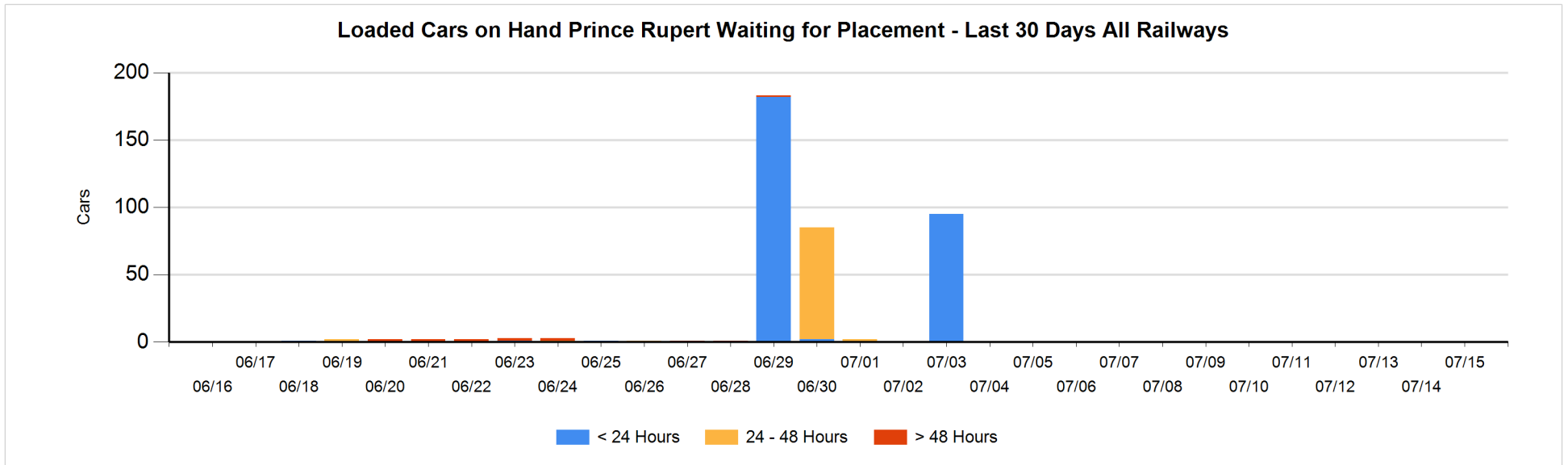
Age Profile of Loaded Cars Waiting Placement for Unloading

Today

< 24 Hrs	24 - 48 Hrs	> 48-72 Hrs	> 72 Hrs	Total On Hand
CN				0

Change in Last 24 Hours

< 24 Hrs	24-48 Hrs	48 - 72 Hrs	> 72 Hrs
CN			



Port Terminal Status

Thunder Bay

Daily Activity for 7/15/2019

	Cars Arrived	Cars Received in Interchange	Cars Delivered in Interchange	Cars Placed for Unloading	Loads on Wheels at Destination As of 7/15/2019
CN				7	4
CP	593			108	669

Port Unloads

	07/15	07/14	Week To Date	Last Week
CN	7	6	7	342
CP	166	176	166	879

Age Profile of Loaded Cars Waiting Placement for Unloading

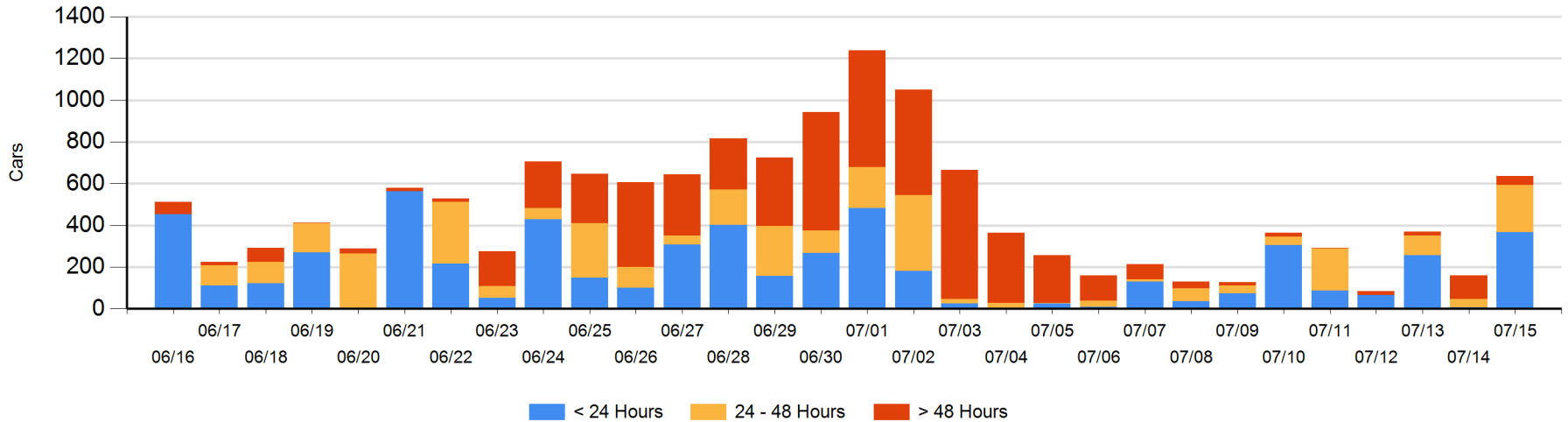
Today

	< 24 Hrs	24 - 48 Hrs	> 48-72 Hrs	> 72 Hrs	Total On Hand
CN				2	2
CP	366	227	25	17	635

Change in Last 24 Hours

	< 24 Hrs	24-48 Hrs	48 - 72 Hrs	> 72 Hrs
CN	-7		-1	1
CP	366	187	-69	1

Loaded Cars on Hand Thunder Bay Waiting for Placement - Last 30 Days All Railways



Measurement Definitions

Loads on Wheels	<p>Count of loaded rail cars including all rail cars that have been released loaded at origin and have not been reported by the railway as unloaded at destination.</p> <p>Counts include all rail cars (hopper cars and boxcars) moving within a pipeline.</p>
Loads Not Moving	<p>Loaded rail cars for which the railways have not reported a movement event for 48 hours or more whether the rail car is at origin, enroute or at destination.</p>
Port Unloads	<p>Count of rail cars reported by railways as unloaded at the western port destinations of Vancouver, Prince Rupert and Thunder Bay.</p> <p>Unload counts include all rail cars (hopper cars and boxcars) unloaded by all receivers including major port terminals, transloaders and other receivers.</p>
Cars Arrived	<p>Count of rail cars reported as arrived at the destination railway terminal.</p>
Cars Received in Interchange	<p>Count of rail cars received in interchange by each railway within a destination railway terminal. Interchange activity is tracked for the Vancouver and Thunder Bay pipelines as applicable.</p>
Cars Delivered in Interchange	<p>Count of rail cars delivered in interchange by each railway within a destination railway terminal. Interchange activity is tracked for the Vancouver and Thunder Bay pipelines as applicable.</p>
Cars Placed for Unloading	<p>Count of rail cars reported by the railways as placed loaded at the receiver's facility for unloading.</p>
Loads on Wheels at Destination	<p>Count of rail cars that remain under load within the destination railway terminal including rail cars that have been reported as placed for unloading but not yet reported as unloaded.</p>
Waiting Placement for Unloading	<p>Count of rail cars that have been reported as arrived at the destination railway terminal but not reported as placed for unloading by the railway.</p> <p>For the Ports of Vancouver, Prince Rupert and Thunder Bay the count of rail cars waiting placement for unloading is categorized by age – i.e. the elapsed time from arrival at destination to the current report date.</p>