

SPEED READ

- Loads on wheels increased marginally overnight, marking higher CP traffic offset by a decline in CN volumes. On a net basis, volumes increased due to higher volumes in the Vancouver and Thunder Bay corridors offset by lower traffic in the Prince Rupert, E. Canada and USA/MEX corridors.
- Network fluidity deteriorated overnight, led by an increase in idle car counts on both CN and CP by 13% (+83) and 46% (+198), respectively. The total count of cars for 4+ days on both railways decreased marginally by 1% (-9) overnight - now at 797 cars.
- Three days in Week 51 unloads now behind prior week's performance by more than 300 unloads, reflecting reduced unloads at Prince Rupert and Vancouver offset by improved week over week performance at Thunder Bay.

=====

Loads on Wheels

- Loads on wheels increased marginally by (+15) overnight and have now increased for the third consecutive day, due to higher volumes on CP offset by reduced volumes on CN - combined total at 8,550 and 3% above the trailing 30-day average.
- On a net basis, the increase in loads on wheels indicates higher volumes in the Vancouver and Thunder Bay corridors offset by lower traffic in the Prince Rupert, E. Canada and USA/MEX corridors.
- CN volumes declined 8% (-387) overnight, with lower volumes across all corridors other than Thunder Bay. System wide CN loads on wheels now at 4,223 and 6% below the trailing 30-day average.
- CP volumes gained significantly by 11% (+401) overnight, driven by a rise in traffic across all corridors other than E. Canada. CP system wide loads on wheels currently at 4,215 and 16% above the trailing 30-day average.
- Vancouver now at 4,934, increased marginally by 1% (+62) overnight, now 3% above the trailing 30-day average.
- The Prince Rupert pipeline now at 1,235, fell 4% (-46) overnight, and 1% below the trailing 30-day average.
- Thunder Bay volumes increased for the seventh consecutive day, up 3% (+50) overnight - now at 1,566 and 8% above the trailing 30-day average, with 80% of traffic moving on CP.

Hopper Car Rationing

- CP rationed 55 hopper cars in week 49. No hopper car rationing has been reported for either CN or CP in week 50.

Loads Not Moving

- **The count of cars not moving for 48+ hours rose 26% (+281) overnight, marking higher counts on both CN and CP. Idle car counts now at 1,344 and 15% above the trailing 30-day average.**
- CN
 - **The count of idle cars for 48+ hours gained 13% (+83) overnight - now at 714 cars.**
 - The number of cars idle for 4+ days decreased 14% (-67) overnight - presently at 426 cars.
 - The count of cars not moving for 7+ days increased significantly by 97% (+63) overnight and have now increased for the third consecutive day - presently at 128 cars.
 - Vancouver represents 34% of all idle cars.
 - In total 73% of all idle cars are dwelling at origin locations.
- CP
 - **CP idle car counts for 48+ hours increased significantly by 46% (+198) overnight - now at 630 cars.**

- The number of cars idle for 4+ days increased 19% (+58) overnight and have now increased for the third consecutive day - currently at 371 cars.
- The number of cars idle for 7+ days increased 21% (+14) overnight and have now increased for the third consecutive day - presently at 80 cars.
- Vancouver accounts for 62% of all idle cars.
- In total 35% of all idle cars are dwelling at origin locations.

Port Performance

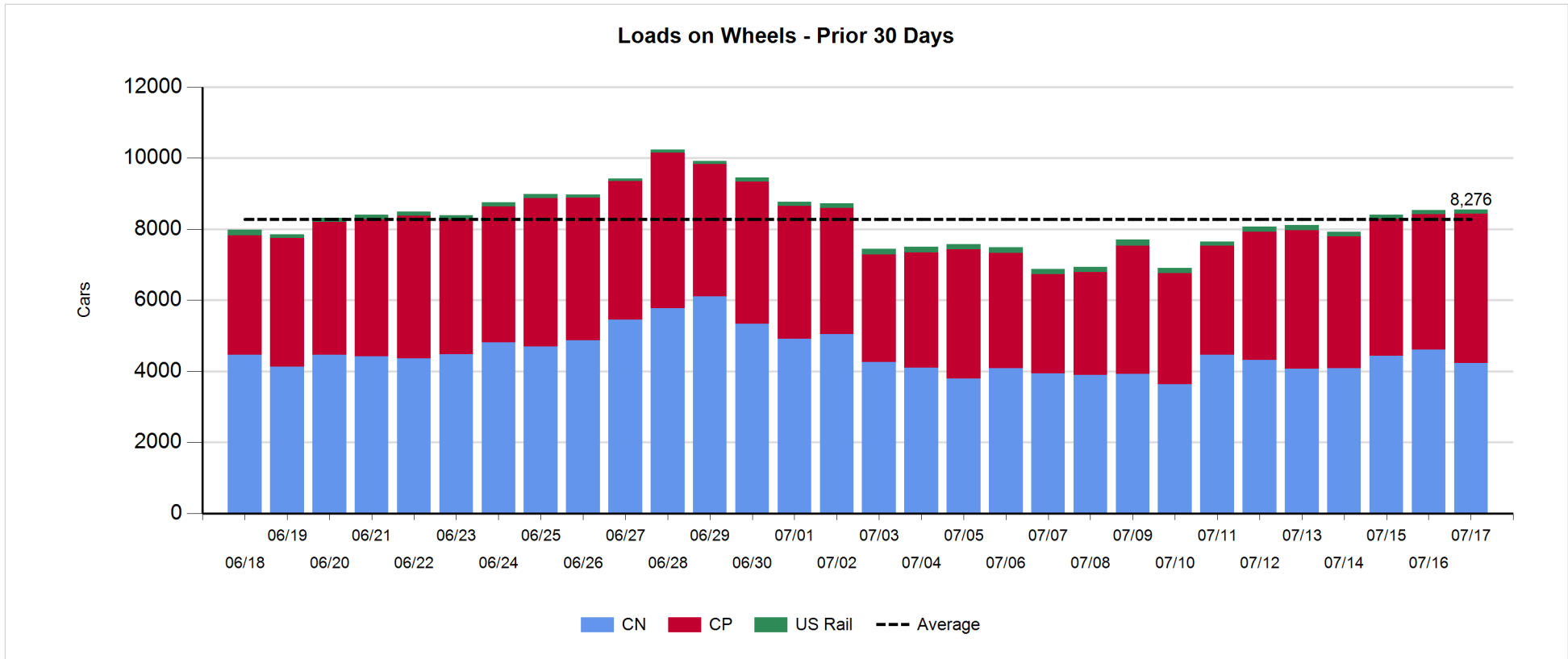
- CN and CP reported a total of 603 cars unloaded at the three major ports, the lowest seen in the last 30 days, now 40% below the trailing 30-day average. Three days in Week 51 unloads now behind last week's pace by more than 300 unloads, reflecting reduced unloads at Prince Rupert and Vancouver offset by higher unloads at Thunder Bay.
- Vancouver
 - 392 unloads reported by CN and CP at the Port of Vancouver; CN - 165 and CP - 227. Three days in Week 51 unloads are tracking behind last week's performance by 150 unloads.
 - There are fewer than 1,550 cars on site at Vancouver with 750 cars arriving at the port in the last 24 hours.
 - CN and CP have more than 1,000 cars in British Columbia en route to Vancouver, with more than 750 cars at Kamloops and west, and 57% of traffic moving on CN.
- Prince Rupert
 - Prince Rupert reported 48 unloads, now behind last week's unloads after three days by more than 200 unloads.
 - Loads on wheels now above 1,000 cars - now at 1,235 cars.
 - There are more than 100 cars west of Jasper en route to Prince Rupert.
 - There are 100 cars on site at Prince Rupert with zero cars arriving at the port in the last 24 hours.
- Thunder Bay
 - 163 unloads were reported at Thunder Bay yesterday. Three days in Week 51 unloads are tracking ahead of last week's pace by more than 50 unloads.
 - There are around 550 cars on site at Thunder Bay with 200 cars arriving at the port in the prior 24 hours.
 - There are more than 650 cars en route to Thunder Bay from Winnipeg and east.

Daily Loads on Wheels - 7/17/2019

	E Canada	Prince Rupert	Thunder Bay	USA/MEX	Vancouver	Total
CN	439	1,235	314	123	2,112	4,223
CP	28		1,252	147	2,788	4,215
Short Line	6				34	40
US Rail				72		72
	473	1,235	1,566	342	4,934	8,550

Change in Loads on Wheels - Prior 24 Hours

	E Canada	Prince Rupert	Thunder Bay	USA/MEX	Vancouver	Total
CN	-26	-46	5	-6	-314	-387
CP	-21		45	1	376	401
Short Line	2				0	2
US Rail				-1		-1
	-45	-46	50	-6	62	15

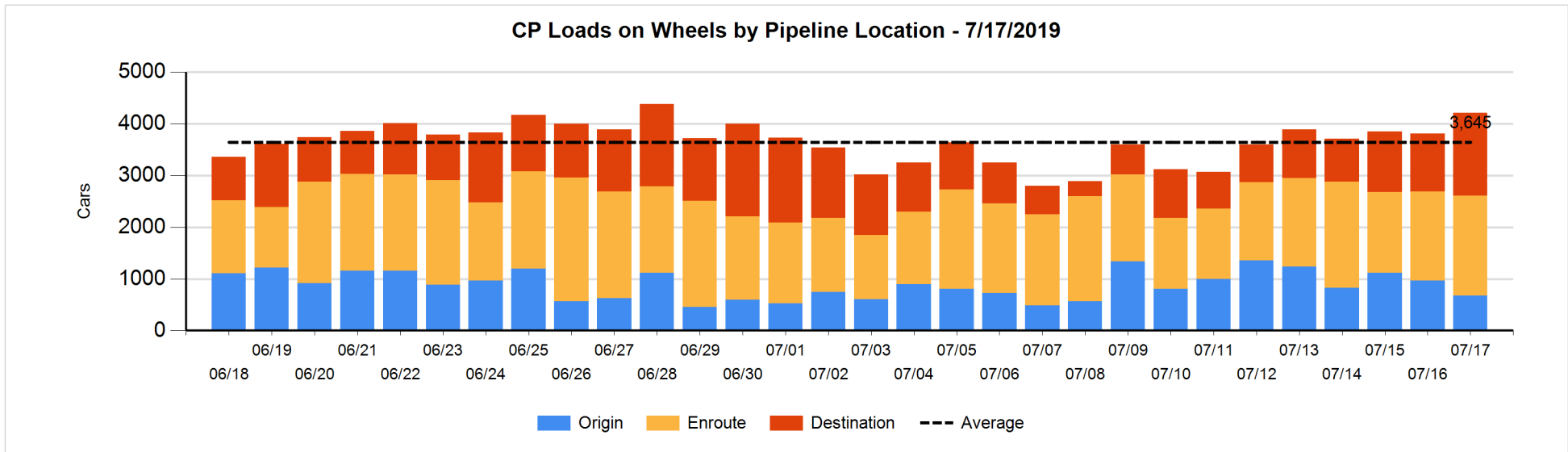
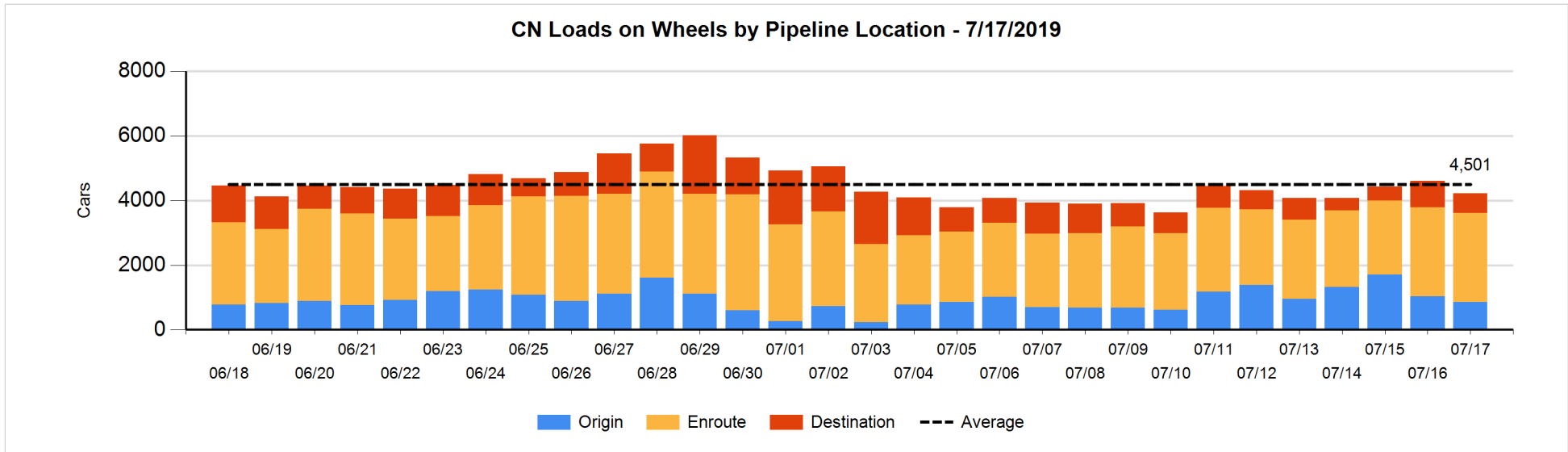


Daily Loads on Wheels By Pipeline Location - 7/17/2019

	E Canada	Prince Rupert	Thunder Bay	USA/MEX	Vancouver	Total
CN						
Origin	10	504	49	4	289	856
Enroute	373	625	258	112	1,388	2,756
Destination	56	106	7	7	435	611
	439	1,235	314	123	2,112	4,223
CP						
Origin	1		183	116	379	679
Enroute	11		542	31	1,346	1,930
Destination	16		527		1,063	1,606
	28		1,252	147	2,788	4,215
US Rail / Short Line						
Origin						
Enroute				32		32
Destination	6			40	34	80
	6			72	34	112

Change in Daily Loads on Wheels By Pipeline Location - Prior 24 Hours

	E Canada	Prince Rupert	Thunder Bay	USA/MEX	Vancouver	Total
CN						
Origin	-99	0	49	3	-136	-183
Enroute	61	2	1	-2	-56	6
Destination	12	-48	-45	-7	-122	-210
	-26	-46	5	-6	-314	-387
CP						
Origin	0		-141	2	-150	-289
Enroute	-1		99	-1	114	211
Destination	-20		87		412	479
	-21		45	1	376	401
US Rail / Short Line						
Origin						
Enroute				-7		-7
Destination	2			6	0	8
	2			-1	0	1

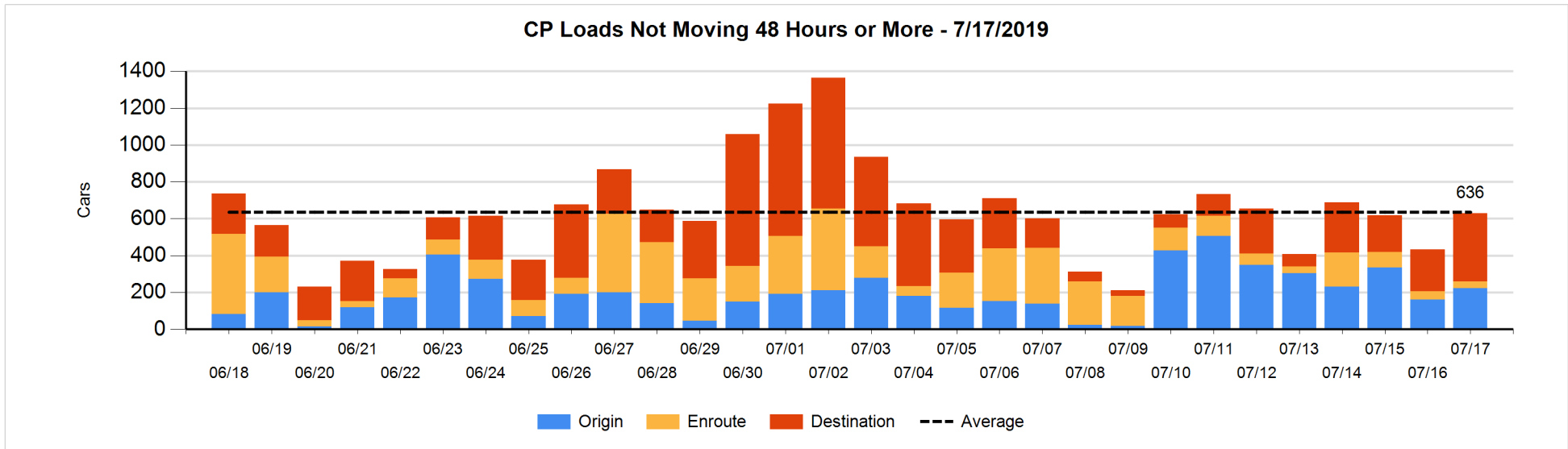
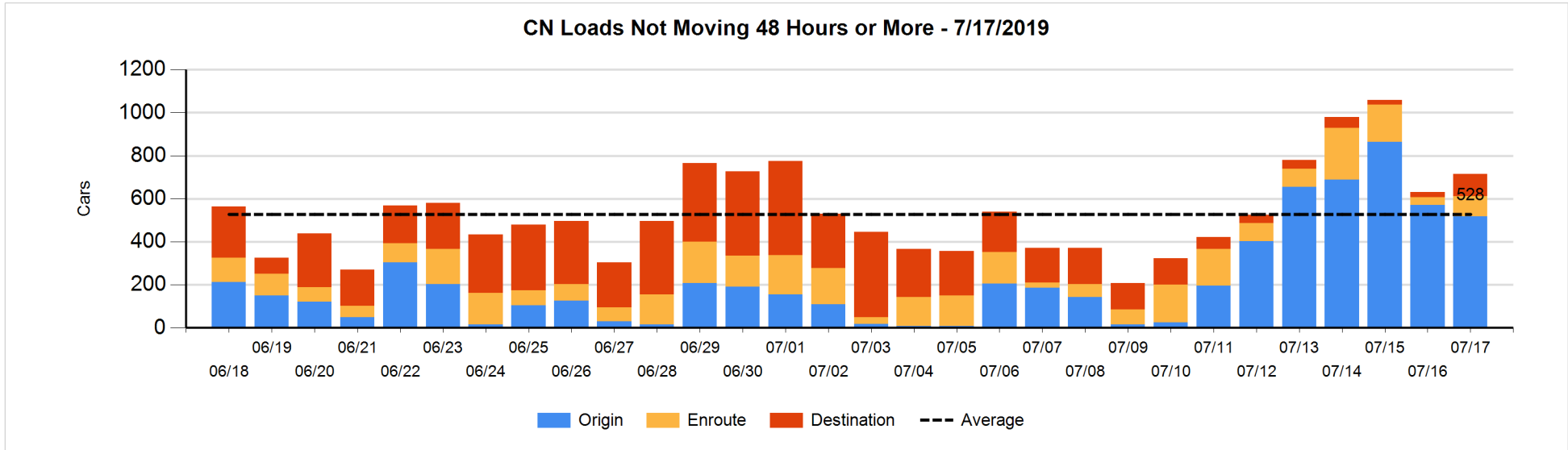


Loads Not Moving 48 Hours or More - 7/17/2019

	E Canada	Prince Rupert	Thunder Bay	USA/MEX	Vancouver	Total
CN						
Origin		400		1	118	519
Enroute	40	11		9	32	92
Destination	2		4	1	96	103
	42	411	4	11	246	714
CP						
Origin	1		42	3	176	222
Enroute	5		3	4	24	36
Destination	1		182		189	372
	7		227	7	389	630
US Rail / Short Line						
Origin						
Enroute				18		18
Destination	3			24	5	32
	3			42	5	50

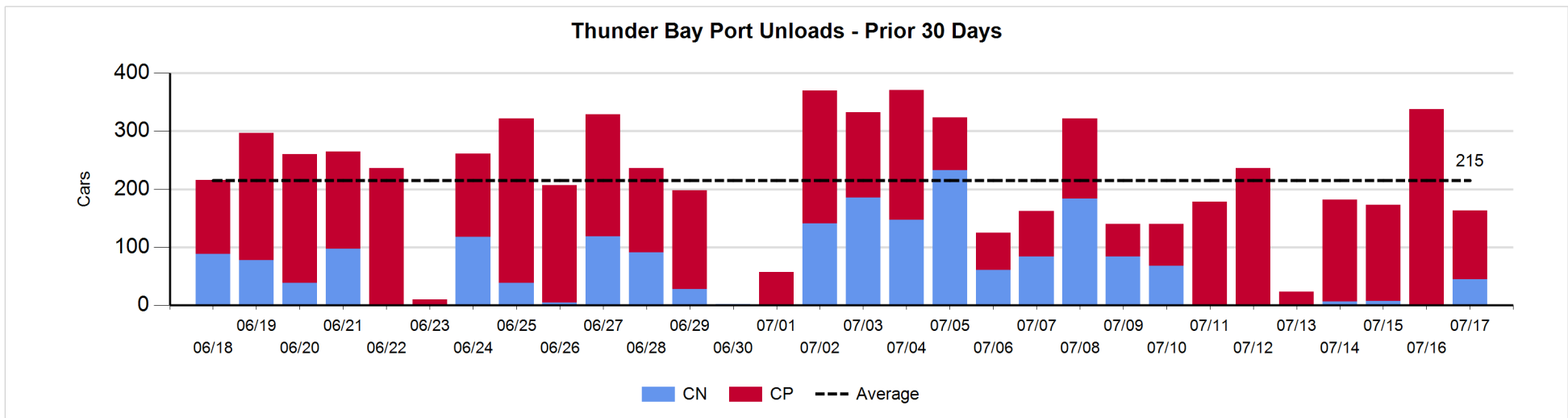
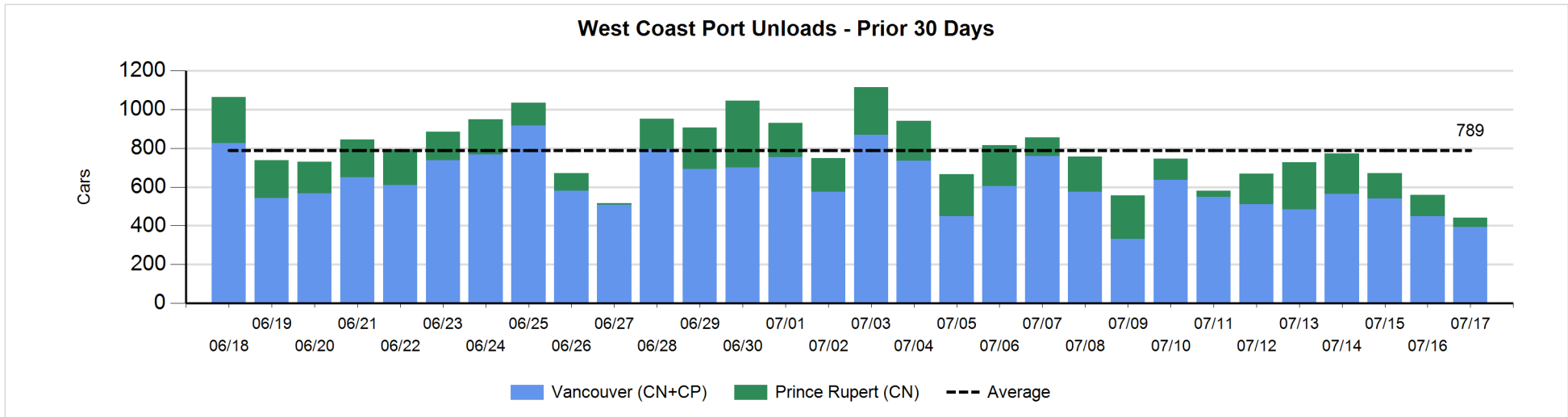
Change in Loads Not Moving 48 Hours or More - 7/17/2019

	E Canada	Prince Rupert	Thunder Bay	USA/MEX	Vancouver	Total
CN						
Origin		22		1	-74	-51
Enroute	26	0		9	20	55
Destination	-1		0	-3	83	79
	25	22	0	7	29	83
CP						
Origin	0		42	2	16	60
Enroute	2		-5	1	-6	-8
Destination	1		120		25	146
	3		157	3	35	198
US Rail / Short Line						
Origin						
Enroute				-3		-3
Destination	-1			-1	-18	-20
	-1			-4	-18	-23



Port Unloads - 7/17/2019

	Prince Rupert	Vancouver	West Coast Total	Thunder Bay	Total
CN	48	165	213	45	258
CP		227	227	118	345
	48	392	440	163	603



Port Terminal Status

Vancouver

Daily Activity for 7/17/2019

	Cars Arrived	Cars Received in Interchange	Cars Delivered in Interchange	Cars Placed for Unloading	Loads on Wheels at Destination As of 7/17/2019
CN	98	3	323	195	435
CP	650	318	16	347	1,063
SRY		18		15	34

Port Unloads

	07/17	07/16	Week To Date	Last Week
CN	165	234	768	2,346
CP	227	216	615	1,304
SRY	15	14	42	67

Age Profile of Loaded Cars Waiting Placement for Unloading

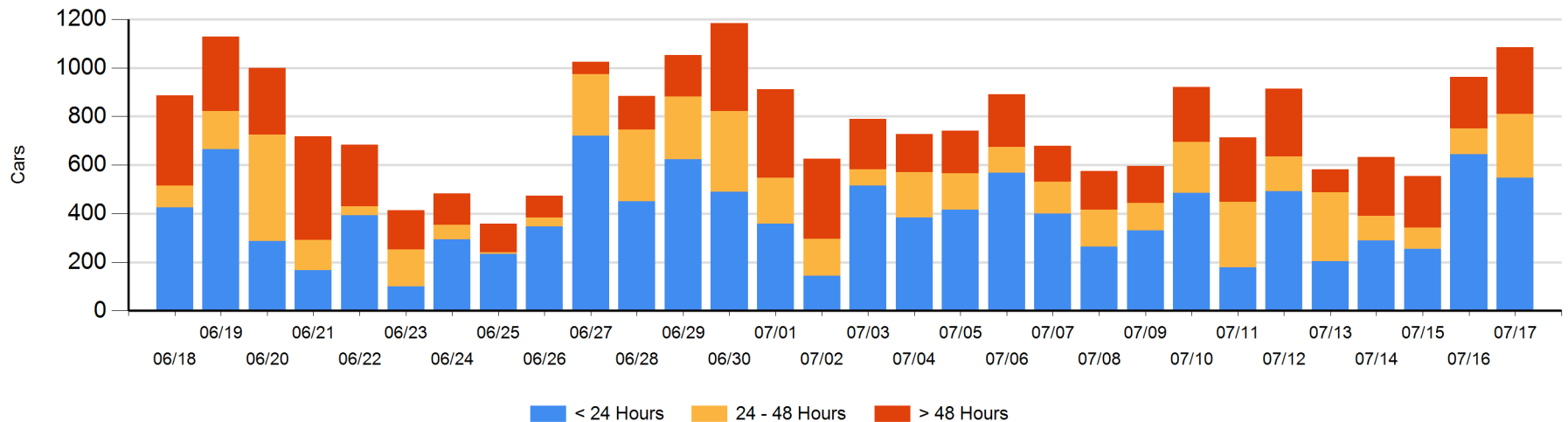
Today

	< 24 Hrs	24 - 48 Hrs	> 48-72 Hrs	> 72 Hrs	Total On Hand
CN	24	119	83	108	334
CP	523	145	21	62	751
SRY					0

Change in Last 24 Hours

	< 24 Hrs	24-48 Hrs	48 - 72 Hrs	> 72 Hrs
CN	-256	36	47	15
CP	158	122	-20	20
SRY				

Loaded Cars on Hand Vancouver Waiting for Placement - Last 30 Days All Railways



Port Terminal Status

Prince Rupert

Daily Activity for 7/17/2019

Cars Arrived	Cars Received in Interchange	Cars Delivered in Interchange	Cars Placed for Unloading	Loads on Wheels at Destination As of 7/17/2019
				106

Port Unloads

	07/17	07/16	Week To Date	Last Week
CN	48	108	285	1,158

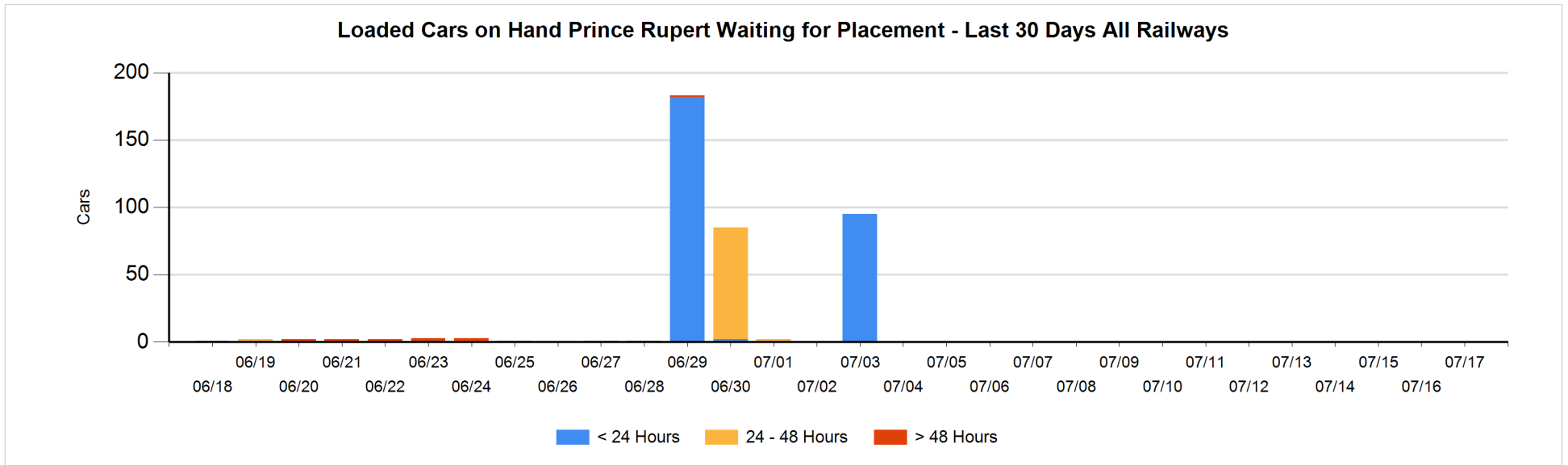
Age Profile of Loaded Cars Waiting Placement for Unloading

Today

< 24 Hrs	24 - 48 Hrs	> 48-72 Hrs	> 72 Hrs	Total On Hand
				0

Change in Last 24 Hours

< 24 Hrs	24-48 Hrs	48 - 72 Hrs	> 72 Hrs



Port Terminal Status

Thunder Bay

Daily Activity for 7/17/2019

	Cars Arrived	Cars Received in Interchange	Cars Delivered in Interchange	Cars Placed for Unloading	Loads on Wheels at Destination As of 7/17/2019
CN				48	7
CP	204			112	527

Port Unloads

	07/17	07/16	Week To Date	Last Week
CN	45		52	342
CP	118	338	622	879

Age Profile of Loaded Cars Waiting Placement for Unloading

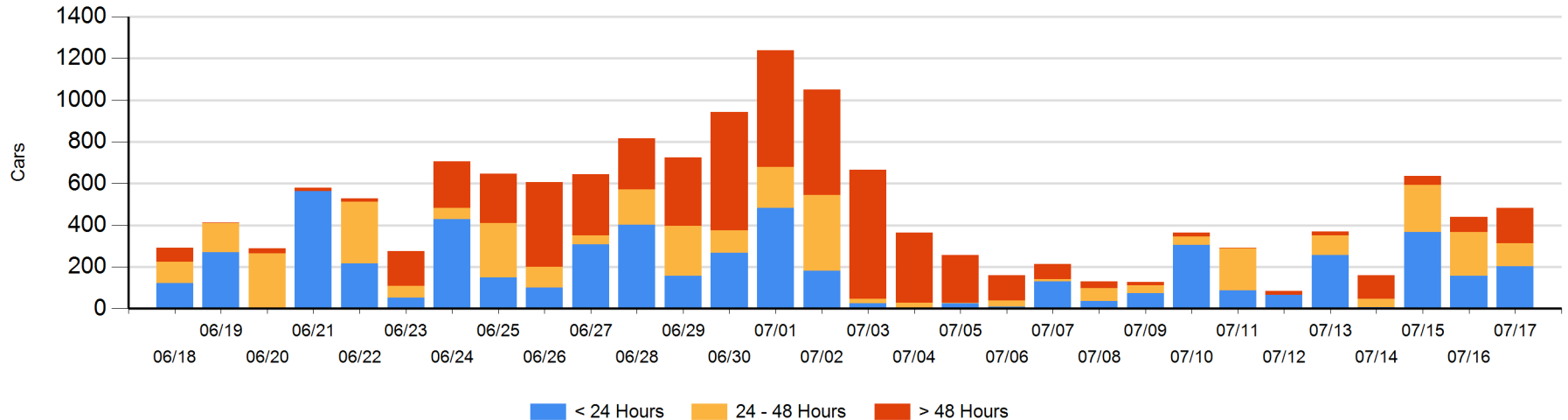
Today

	< 24 Hrs	24 - 48 Hrs	> 48-72 Hrs	> 72 Hrs	Total On Hand
CN				2	2
CP	204	109	98	70	481

Change in Last 24 Hours

	< 24 Hrs	24-48 Hrs	48 - 72 Hrs	> 72 Hrs
CN	-48			0
CP	95	-101	70	28

Loaded Cars on Hand Thunder Bay Waiting for Placement - Last 30 Days All Railways



Measurement Definitions

Loads on Wheels	<p>Count of loaded rail cars including all rail cars that have been released loaded at origin and have not been reported by the railway as unloaded at destination.</p> <p>Counts include all rail cars (hopper cars and boxcars) moving within a pipeline.</p>
Loads Not Moving	<p>Loaded rail cars for which the railways have not reported a movement event for 48 hours or more whether the rail car is at origin, enroute or at destination.</p>
Port Unloads	<p>Count of rail cars reported by railways as unloaded at the western port destinations of Vancouver, Prince Rupert and Thunder Bay.</p> <p>Unload counts include all rail cars (hopper cars and boxcars) unloaded by all receivers including major port terminals, transloaders and other receivers.</p>
Cars Arrived	<p>Count of rail cars reported as arrived at the destination railway terminal.</p>
Cars Received in Interchange	<p>Count of rail cars received in interchange by each railway within a destination railway terminal. Interchange activity is tracked for the Vancouver and Thunder Bay pipelines as applicable.</p>
Cars Delivered in Interchange	<p>Count of rail cars delivered in interchange by each railway within a destination railway terminal. Interchange activity is tracked for the Vancouver and Thunder Bay pipelines as applicable.</p>
Cars Placed for Unloading	<p>Count of rail cars reported by the railways as placed loaded at the receiver's facility for unloading.</p>
Loads on Wheels at Destination	<p>Count of rail cars that remain under load within the destination railway terminal including rail cars that have been reported as placed for unloading but not yet reported as unloaded.</p>
Waiting Placement for Unloading	<p>Count of rail cars that have been reported as arrived at the destination railway terminal but not reported as placed for unloading by the railway.</p> <p>For the Ports of Vancouver, Prince Rupert and Thunder Bay the count of rail cars waiting placement for unloading is categorized by age – i.e. the elapsed time from arrival at destination to the current report date.</p>