

SPEED READ

- Loads on wheels decreased marginally overnight, reflecting lower CP traffic offset by an increase in CN volumes. On a net basis, volumes decreased due to lower traffic across all corridors other than Vancouver and Thunder Bay.
- Network fluidity deteriorated overnight, led by an increase in idle car counts on both CN and CP by 2% (+16) and 1% (+11), respectively. The total count of cars for 4+ days on both railways increased significantly by 45% (+134) overnight - currently at 429 cars.
- One day in Week 52 unloads now behind prior week's performance by 29 unloads, marking lower unloads at Vancouver and Prince Rupert offset by improved week over week performance at Thunder Bay.

=====

Loads on Wheels

- Loads on wheels decreased marginally by 1% (-71) overnight and have now decreased for the fourth consecutive day, due to lower traffic on CP offset by higher volumes on CN - combined total at 7,657 and 7% below the trailing 30-day average.
- On a net basis, the decline in loads on wheels indicates lower traffic across all corridors other than Vancouver and Thunder Bay.
- CN volumes increased 3% (+97) overnight, with higher traffic in the Vancouver and Thunder Bay corridors offset by lower volumes in the Prince Rupert, E. Canada and USA/MEX corridors. System wide CN loads on wheels now at 3,886 and 13% below the trailing 30-day average.
- CP volumes decreased 5% (-202) overnight, driven by a decline in traffic across all corridors - Vancouver, Thunder Bay, USA/MEX and E. Canada. CP system wide loads on wheels currently at 3,654 and 1% below the trailing 30-day average.
- Vancouver now at 3,977, increased 2% (+82) overnight, now 16% below the trailing 30-day average.
- The Prince Rupert pipeline currently at 1,053, decreased 7% (-78) overnight and have now decreased for the third consecutive day, and 17% below the trailing 30-day average.
- Thunder Bay volumes remained unchanged (0) overnight - now at 1,793 and 21% above the trailing 30-day average, with 67% of traffic moving on CP.

Hopper Car Rationing

- No hopper cars were rationed by either CN or CP in week 50.

Loads Not Moving

- **The count of cars not moving for 48+ hours increased for the third consecutive day, up 2% (+27) overnight, reflecting higher counts on both CN and CP. Idle car counts currently at 1,554 and 26% above the trailing 30-day average.**
- CN
 - **The count of idle cars for 48+ hours increased 2% (+16) overnight - now at 808 cars.**
 - The number of cars idle for 4+ days rose significantly by 67% (+97) overnight - currently at 241 cars.
 - The count of cars not moving for 7+ days increased significantly by 450% (+99) overnight - now at 121 cars.
 - Vancouver represents 52% of all idle cars.
 - In total 35% of all idle cars are dwelling at origin locations.
- CP
 - **CP idle car counts for 48+ hours increased for the third consecutive day, up 1% (+11) overnight - currently at 746 cars.**
 - The number of cars idle for 4+ days increased 25% (+37) overnight - now at 188 cars.
 - The number of cars idle for 7+ days increased significantly by 48% (+16) overnight - presently at 49 cars.

- Vancouver accounts for 48% of all idle cars.
- In total 46% of all idle cars are dwelling at origin locations.

Port Performance

- CN and CP reported a total of 825 cars unloaded at the three major ports, now 17% below the trailing 30-day average. One day in Week 52 unloads now behind last week's pace by 29 unloads, marking lower unloads at Vancouver and Prince Rupert offset by higher unloads at Thunder Bay.
- Vancouver
 - 435 unloads reported by CN and CP at the Port of Vancouver; CN - 204 and CP - 231. One day in Week 52 unloads are tracking behind last week's performance by more than 100 unloads.
 - There are more than 1,350 cars on site at Vancouver with more than 550 cars arriving at the port in the last 24 hours.
 - CN and CP have more than 600 cars in British Columbia en route to Vancouver, with 400 cars at Kamloops and west, and 62% of traffic moving on CP.
- Prince Rupert
 - Prince Rupert reported 79 unloads, now behind last week's unloads after one day by 50 unloads.
 - Loads on wheels now above 1,000 cars - now at 1,053 cars.
 - There are about 500 cars west of Jasper en route to Prince Rupert.
 - There are more than 200 cars on site at Prince Rupert with about 250 cars arriving at the port in the last 24 hours.
- Thunder Bay
 - 311 unloads were reported at Thunder Bay yesterday. One day in Week 52 unloads are tracking ahead of last week's pace by about 150 unloads.
 - There are 650 cars on site at Thunder Bay with more than 250 cars arriving at the port in the prior 24 hours.
 - There are more than 450 cars en route to Thunder Bay from Winnipeg and east.

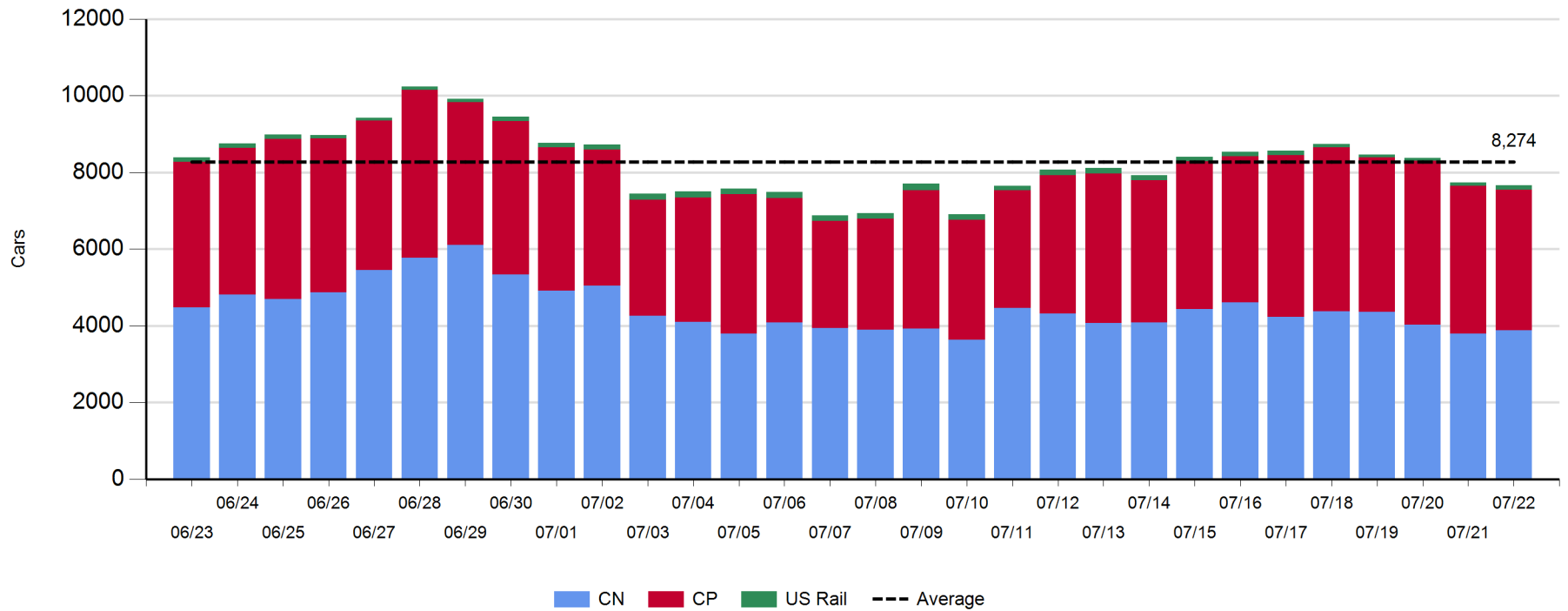
Daily Loads on Wheels - 7/22/2019

	E Canada	Prince Rupert	Thunder Bay	USA/MEX	Vancouver	Total
CN	330	1,053	592	118	1,793	3,886
CP	42		1,201	295	2,116	3,654
Short Line	5				68	73
US Rail				44		44
	377	1,053	1,793	457	3,977	7,657

Change in Loads on Wheels - Prior 24 Hours

	E Canada	Prince Rupert	Thunder Bay	USA/MEX	Vancouver	Total
CN	-49	-78	102	-10	132	97
CP	-3		-102	-8	-89	-202
Short Line	0				39	39
US Rail				-5		-5
	-52	-78	0	-23	82	-71

Loads on Wheels - Prior 30 Days

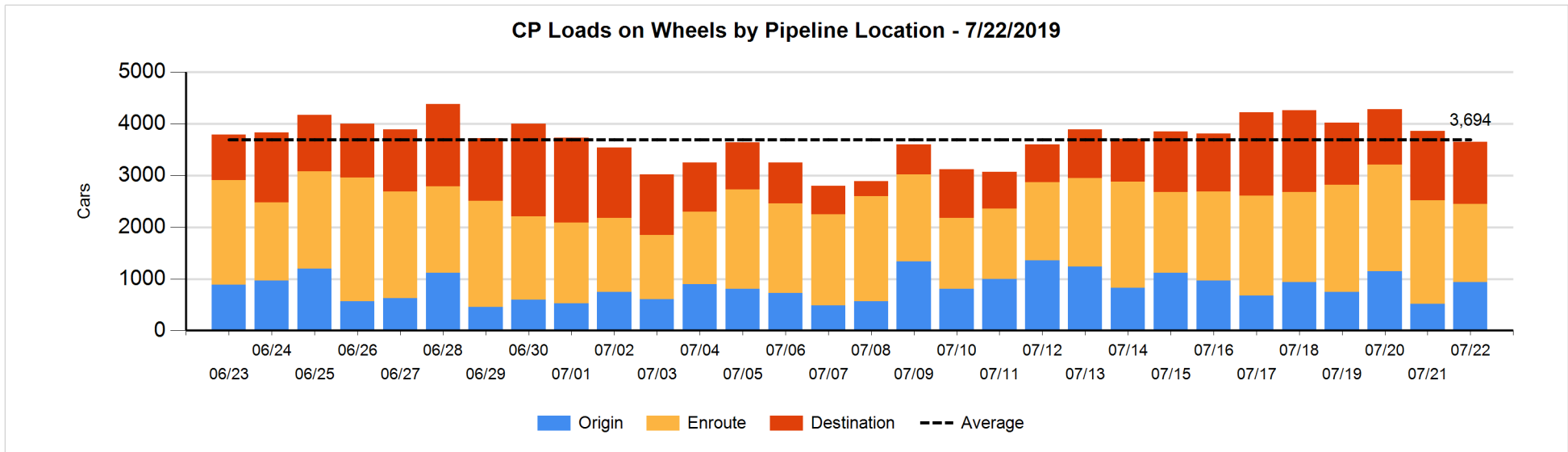
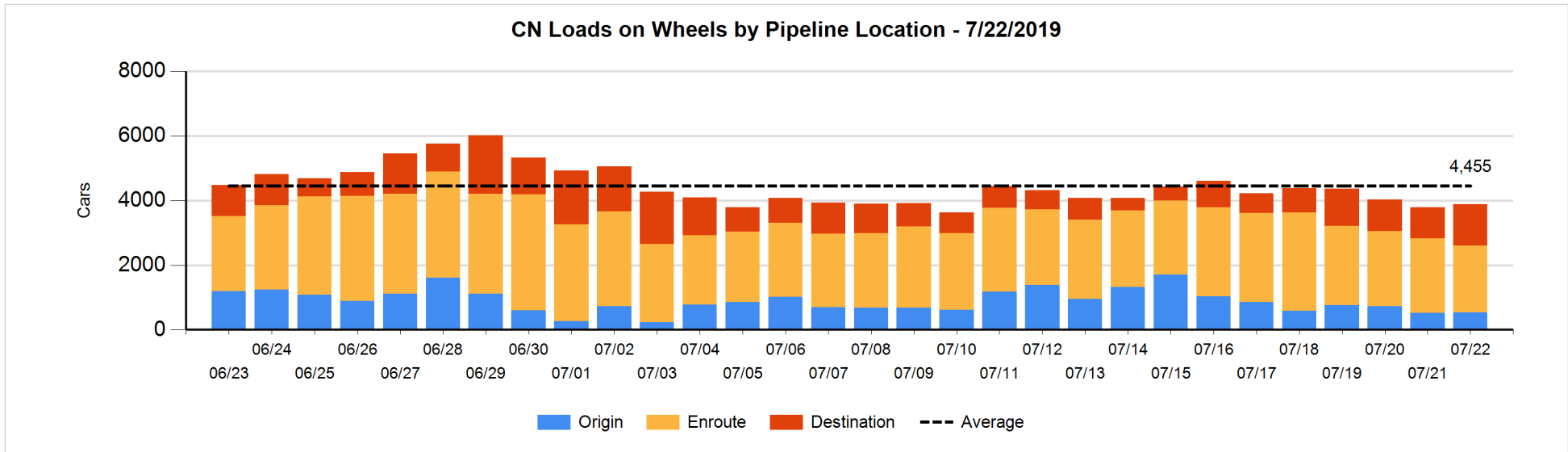


Daily Loads on Wheels By Pipeline Location - 7/22/2019

	E Canada	Prince Rupert	Thunder Bay	USA/MEX	Vancouver	Total
CN						
Origin	9	80	196	12	234	531
Enroute	153	758	156	85	925	2,077
Destination	168	215	240	21	634	1,278
	330	1,053	592	118	1,793	3,886
CP						
Origin	26		336	35	541	938
Enroute	12		458	137	900	1,507
Destination	4		407	123	675	1,209
	42		1,201	295	2,116	3,654
US Rail / Short Line						
Origin						
Enroute				23		23
Destination	5			21	68	94
	5			44	68	117

Change in Daily Loads on Wheels By Pipeline Location - Prior 24 Hours

	E Canada	Prince Rupert	Thunder Bay	USA/MEX	Vancouver	Total
CN						
Origin	9	-25	98	1	-73	10
Enroute	-22	-206	-59	-29	85	-231
Destination	-36	153	63	18	120	318
	-49	-78	102	-10	132	97
CP						
Origin	2		112	1	311	426
Enroute	0		-113	-124	-262	-499
Destination	-5		-101	115	-138	-129
	-3		-102	-8	-89	-202
US Rail / Short Line						
Origin						
Enroute				1		1
Destination	0			-6	39	33
	0			-5	39	34

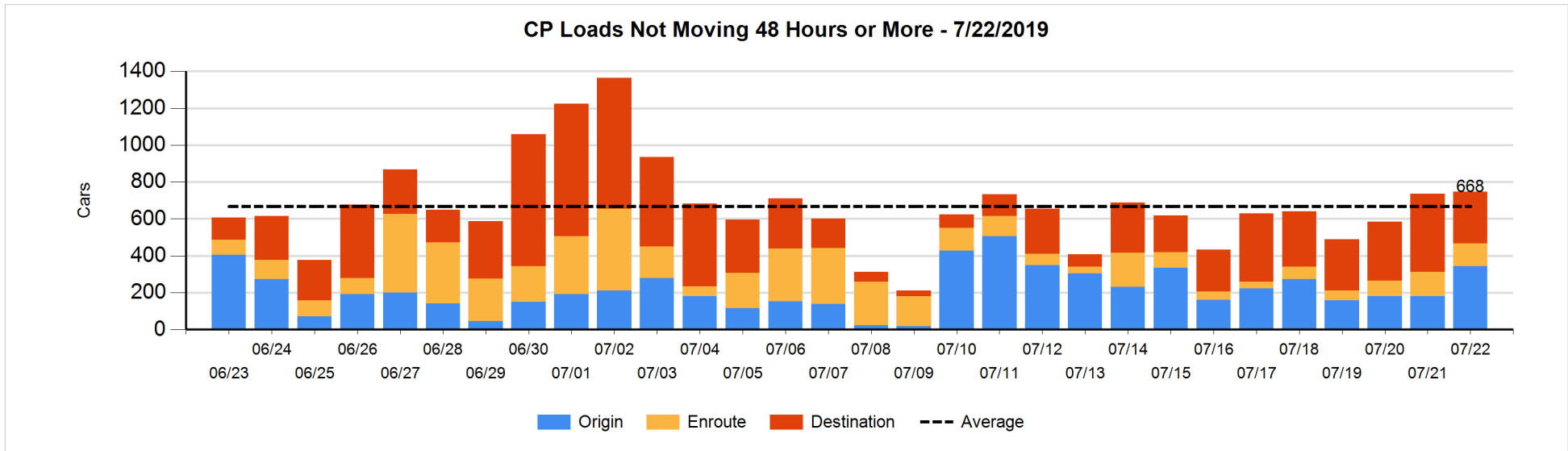
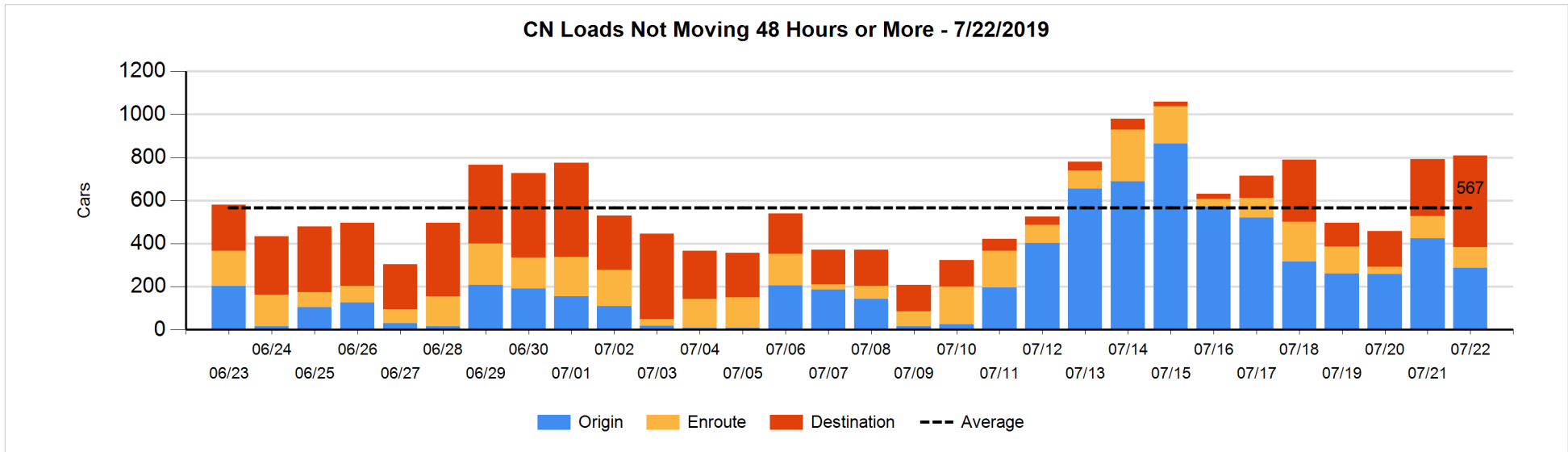


Loads Not Moving 48 Hours or More - 7/22/2019

	E Canada	Prince Rupert	Thunder Bay	USA/MEX	Vancouver	Total
CN						
Origin		80			206	286
Enroute	77	15	2		4	98
Destination	124	6	83	1	210	424
	201	101	85	1	420	808
CP						
Origin	24		168	34	118	344
Enroute	1		1	9	113	124
Destination	4		146		128	278
	29		315	43	359	746
US Rail / Short Line						
Origin						
Enroute				13		13
Destination	5			17	17	39
	5			30	17	52

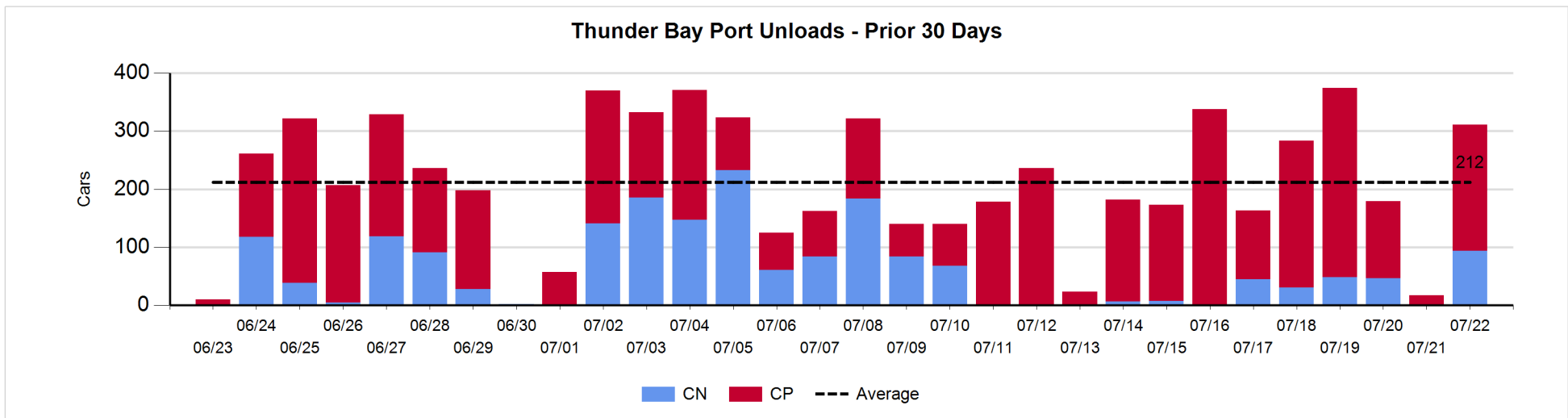
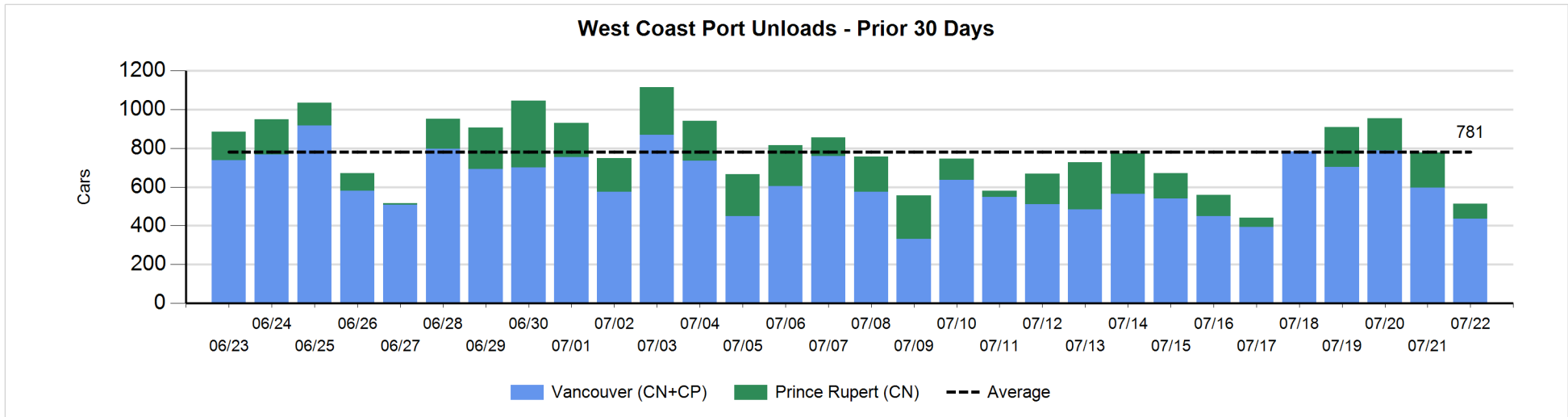
Change in Loads Not Moving 48 Hours or More - 7/22/2019

	E Canada	Prince Rupert	Thunder Bay	USA/MEX	Vancouver	Total
CN						
Origin		-25	-98	-11	-5	-139
Enroute	59	-32	0	-11	-21	-5
Destination	79	-12	55	-2	40	160
	138	-69	-43	-24	14	16
CP						
Origin	0		168	0	-5	163
Enroute	-3		-57	-1	53	-8
Destination	-5		-102		-37	-144
	-8		9	-1	11	11
US Rail / Short Line						
Origin						
Enroute				0		0
Destination	3			-7	0	-4
	3			-7	0	-4



Port Unloads - 7/22/2019

	Prince Rupert	Vancouver	West Coast Total	Thunder Bay	Total
CN	79	204	283	94	377
CP		231	231	217	448
	79	435	514	311	825



Port Terminal Status

Vancouver

Daily Activity for 7/22/2019

	Cars Arrived	Cars Received in Interchange	Cars Delivered in Interchange	Cars Placed for Unloading	Loads on Wheels at Destination As of 7/22/2019
CN	84	328	89	190	634
CP	489	48	329	207	675
SRY		42			68

Port Unloads

	07/22	07/21	Week To Date	Last Week
CN	204	283	204	2,177
CP	231	313	231	2,075
SRY	2		2	62

Age Profile of Loaded Cars Waiting Placement for Unloading

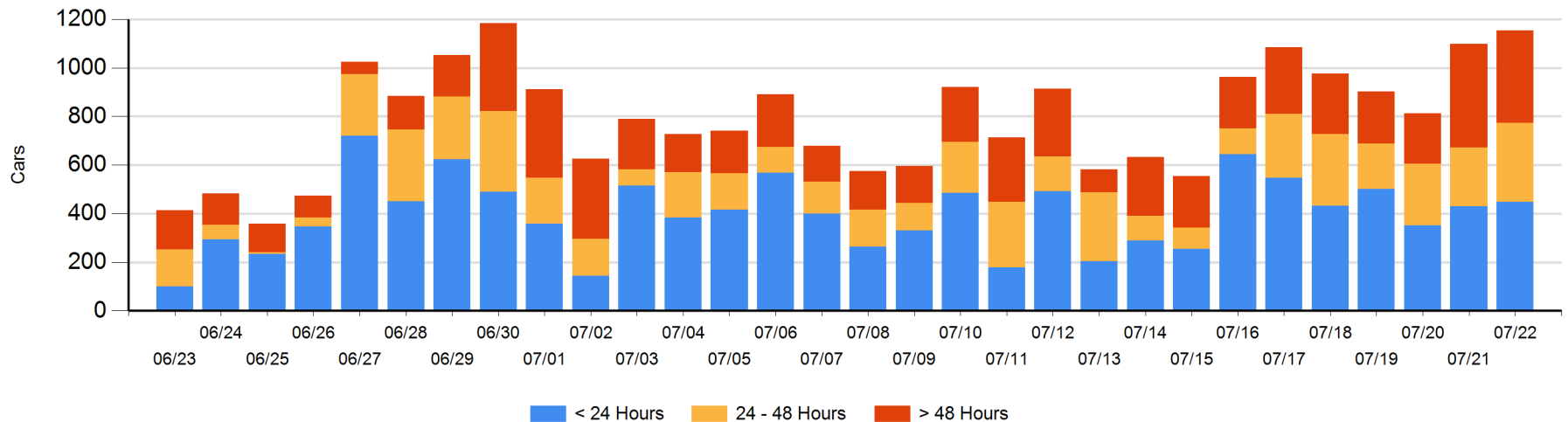
Today

	< 24 Hrs	24 - 48 Hrs	> 48-72 Hrs	> 72 Hrs	Total On Hand
CN	84	110	1	122	317
CP	364	215	224	35	838
SRY					0

Change in Last 24 Hours

	< 24 Hrs	24-48 Hrs	48 - 72 Hrs	> 72 Hrs
CN	-26	109	-69	8
CP	43	-25	52	-36
SRY				

Loaded Cars on Hand Vancouver Waiting for Placement - Last 30 Days All Railways



Port Terminal Status

Prince Rupert

Daily Activity for 7/22/2019

	Cars Arrived	Cars Received in Interchange	Cars Delivered in Interchange	Cars Placed for Unloading	Loads on Wheels at Destination As of 7/22/2019
CN	232			232	215

Port Unloads

	07/22	07/21	Week To Date	Last Week
CN	79	183	79	841

Age Profile of Loaded Cars Waiting Placement for Unloading

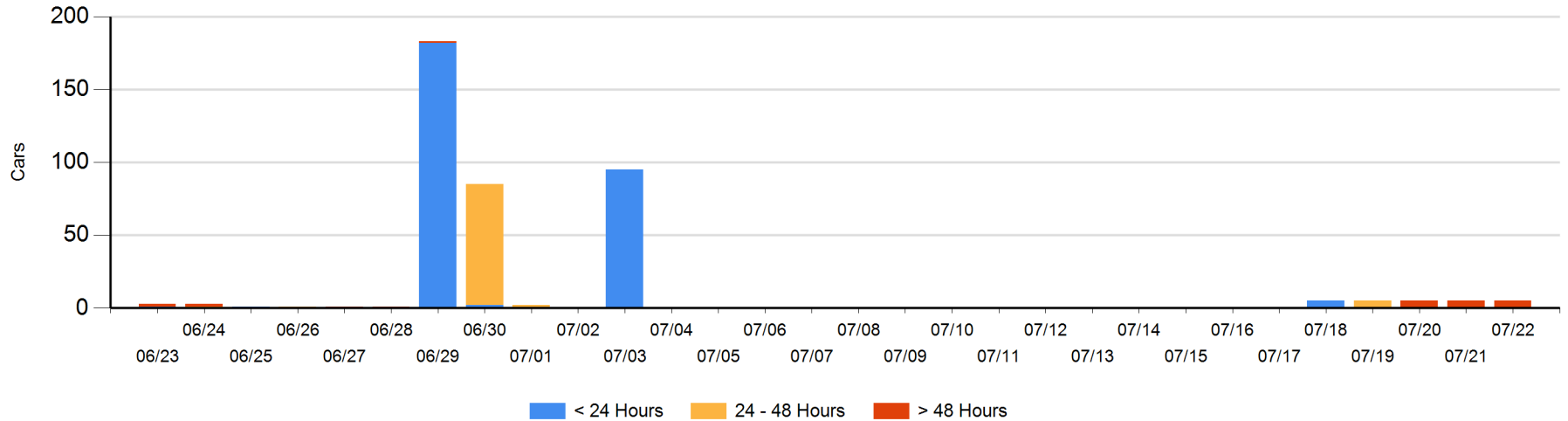
Today

	< 24 Hrs	24 - 48 Hrs	> 48-72 Hrs	> 72 Hrs	Total On Hand
CN				5	5

Change in Last 24 Hours

	< 24 Hrs	24-48 Hrs	48 - 72 Hrs	> 72 Hrs
CN				0

Loaded Cars on Hand Prince Rupert Waiting for Placement - Last 30 Days All Railways



Port Terminal Status

Thunder Bay

Daily Activity for 7/22/2019

	Cars Arrived	Cars Received in Interchange	Cars Delivered in Interchange	Cars Placed for Unloading	Loads on Wheels at Destination As of 7/22/2019
CN	157				240
CP	116			195	407

Port Unloads

	07/22	07/21	Week To Date	Last Week
CN	94	1	94	177
CP	217	16	217	1,350

Age Profile of Loaded Cars Waiting Placement for Unloading

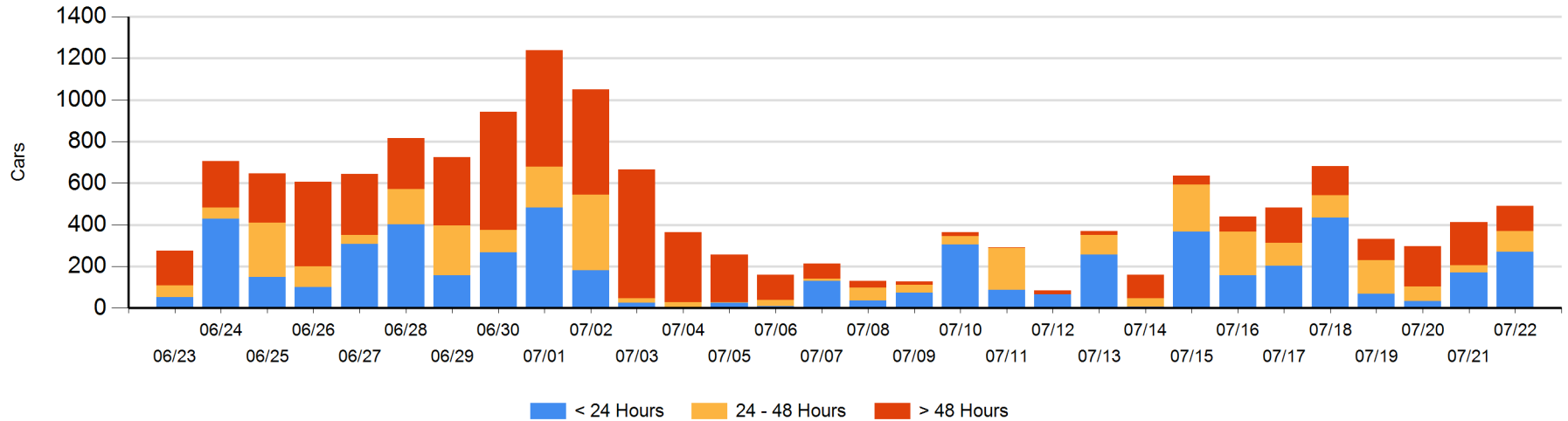
Today

	< 24 Hrs	24 - 48 Hrs	> 48-72 Hrs	> 72 Hrs	Total On Hand
CN	157				157
CP	113	100	34	86	333

Change in Last 24 Hours

	< 24 Hrs	24-48 Hrs	48 - 72 Hrs	> 72 Hrs
CN	157			-1
CP	-58	66	-35	-53

Loaded Cars on Hand Thunder Bay Waiting for Placement - Last 30 Days All Railways



Measurement Definitions

Loads on Wheels	<p>Count of loaded rail cars including all rail cars that have been released loaded at origin and have not been reported by the railway as unloaded at destination.</p> <p>Counts include all rail cars (hopper cars and boxcars) moving within a pipeline.</p>
Loads Not Moving	<p>Loaded rail cars for which the railways have not reported a movement event for 48 hours or more whether the rail car is at origin, enroute or at destination.</p>
Port Unloads	<p>Count of rail cars reported by railways as unloaded at the western port destinations of Vancouver, Prince Rupert and Thunder Bay.</p> <p>Unload counts include all rail cars (hopper cars and boxcars) unloaded by all receivers including major port terminals, transloaders and other receivers.</p>
Cars Arrived	<p>Count of rail cars reported as arrived at the destination railway terminal.</p>
Cars Received in Interchange	<p>Count of rail cars received in interchange by each railway within a destination railway terminal. Interchange activity is tracked for the Vancouver and Thunder Bay pipelines as applicable.</p>
Cars Delivered in Interchange	<p>Count of rail cars delivered in interchange by each railway within a destination railway terminal. Interchange activity is tracked for the Vancouver and Thunder Bay pipelines as applicable.</p>
Cars Placed for Unloading	<p>Count of rail cars reported by the railways as placed loaded at the receiver's facility for unloading.</p>
Loads on Wheels at Destination	<p>Count of rail cars that remain under load within the destination railway terminal including rail cars that have been reported as placed for unloading but not yet reported as unloaded.</p>
Waiting Placement for Unloading	<p>Count of rail cars that have been reported as arrived at the destination railway terminal but not reported as placed for unloading by the railway.</p> <p>For the Ports of Vancouver, Prince Rupert and Thunder Bay the count of rail cars waiting placement for unloading is categorized by age – i.e. the elapsed time from arrival at destination to the current report date.</p>