

SPEED READ

- Loads on wheels declined overnight, marking a decline in CN volumes offset by higher CP volumes. On a net basis, volumes declined due to lower traffic across all corridors other than Prince Rupert which remained unchanged.
- Network fluidity improved overnight, led by a decline in idle car counts on both CN and CP by 30% (-164) and 5% (-35), respectively. The total count of cars for 4+ days on both railways rose 15% (+56) overnight and have now increased for the third consecutive day - now at 432 cars.
- One day in Week 53 unloads now ahead of prior week's performance by 100 unloads, marking improved week over week performance at Vancouver and Thunder Bay offset by lower unloads at Prince Rupert.

=====

Loads on Wheels

- Loads on wheels declined 6% (-438) overnight, due to reduced traffic on CN offset by higher traffic on CP - combined total at 7,251 and 8% below the trailing 30-day average.
- On a net basis, the decline in loads on wheels indicates lower traffic across all corridors other than Prince Rupert.
- CN volumes fell significantly by 12% (-491) overnight, with reduced traffic across the Vancouver, Thunder Bay, USA/MEX and E. Canada corridors. System wide CN loads on wheels presently at 3,485 and 15% below the trailing 30-day average.
- CP volumes gained 2% (+61) overnight, driven by an increase in traffic in the Vancouver and E. Canada corridors offset by a decline in volumes in the Thunder Bay and USA/MEX corridors. CP system wide loads on wheels presently at 3,665 and 2% above the trailing 30-day average.
- Vancouver presently at 4,684, declined 4% (-176) overnight, now 4% above the trailing 30-day average.
- The Prince Rupert pipeline currently at 542, the lowest seen in the last 30 days, remained unchanged overnight, and 52% below the trailing 30-day average.
- Thunder Bay volumes declined significantly by 13% (-185) overnight - currently at 1,205 and 14% below the trailing 30-day average, with 78% of traffic moving on CP.

Hopper Car Rationing

- No hopper cars were rationed by either CN or CP in week 51.

Loads Not Moving

- **The count of cars not moving for 48+ hours fell 16% (-199) overnight, marking reduced counts on both CN and CP. Idle car counts presently at 1,013 and 15% below the trailing 30-day average.**
- CN
 - **The count of idle cars for 48+ hours declined 30% (-164) overnight - presently at 374 cars.**
 - The number of cars idle for 4+ days rose significantly by 51% (+83) overnight - presently at 247 cars.
 - The count of cars not moving for 7+ days fell 11% (-3) overnight - currently at 24 cars.
 - Vancouver represents 63% of all idle cars.
 - In total 0% of all idle cars are dwelling at origin locations.
- CP
 - **CP idle car counts for 48+ hours fell 5% (-35) overnight - presently at 639 cars.**
 - The number of cars idle for 4+ days fell 13% (-27) overnight - now at 185 cars.

- The number of cars idle for 7+ days declined 26% (-30) overnight - presently at 85 cars.
- Vancouver accounts for 70% of all idle cars.
- In total 33% of all idle cars are dwelling at origin locations.

Port Performance

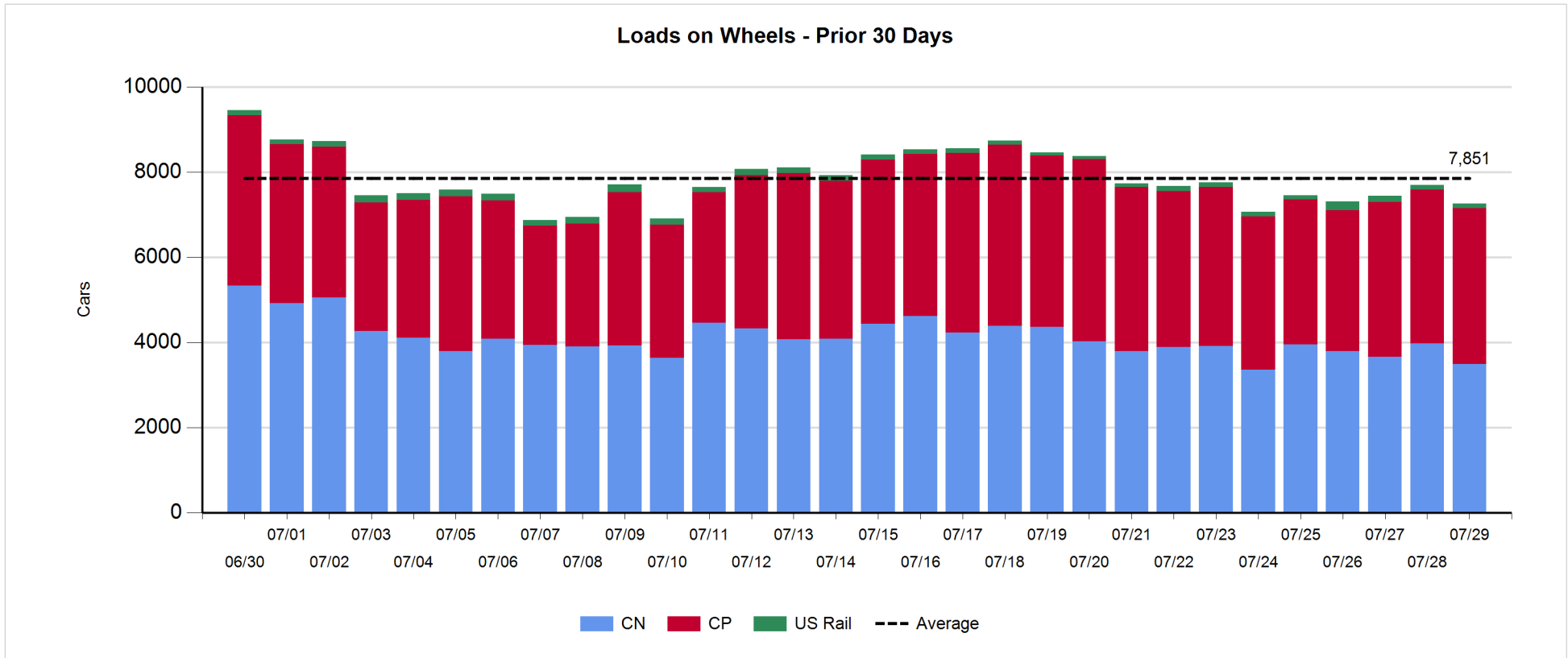
- CN and CP reported a total of 906 cars unloaded at the three major ports, now 6% below the trailing 30-day average. One day in Week 53 unloads now ahead of last week's pace by 100 unloads, marking higher unloads at Vancouver and Thunder Bay offset by lower unloads at Prince Rupert.
- Vancouver
 - 584 unloads reported by CN and CP at the Port of Vancouver; CN - 133 and CP - 451. One day in Week 53 unloads are tracking ahead of last week's performance by more than 150 unloads.
 - There are fewer than 1,700 cars on site at Vancouver with fewer than 900 cars arriving at the port in the last 24 hours.
 - CN and CP have nearly 700 cars in British Columbia en route to Vancouver, with 150 cars at Kamloops and west, and 70% of traffic moving on CP.
- Prince Rupert
 - Prince Rupert reported zero unloads, now behind last week's unloads after one day by more than 50 unloads.
 - Loads on wheels now below 1,000 cars - presently at 542 cars.
 - There are nearly 500 cars west of Jasper en route to Prince Rupert.
 - There are 23 cars on site at Prince Rupert with 3 cars arriving at the port in the last 24 hours.
- Thunder Bay
 - 322 unloads were reported at Thunder Bay yesterday. One day in Week 53 unloads are tracking ahead of last week's pace by 11 unloads.
 - There are 400 cars on site at Thunder Bay with nearly 150 cars arriving at the port in the prior 24 hours.
 - There are more than 250 cars en route to Thunder Bay from Winnipeg and east.

Daily Loads on Wheels - 7/29/2019

	E Canada	Prince Rupert	Thunder Bay	USA/MEX	Vancouver	Total
CN	557	542	263	125	1,998	3,485
CP	68		942	6	2,649	3,665
Short Line	7				37	44
US Rail				57		57
	632	542	1,205	188	4,684	7,251

Change in Loads on Wheels - Prior 24 Hours

	E Canada	Prince Rupert	Thunder Bay	USA/MEX	Vancouver	Total
CN	-71	0	-36	-7	-377	-491
CP	15		-149	-22	217	61
Short Line	-7				-16	-23
US Rail				15		15
	-63	0	-185	-14	-176	-438

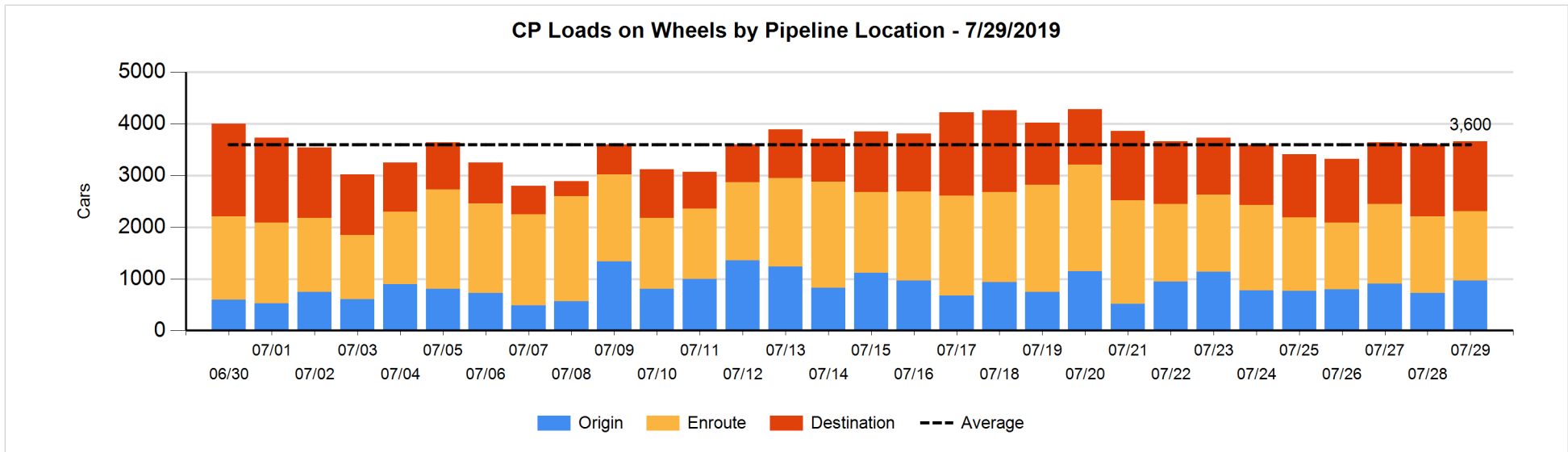
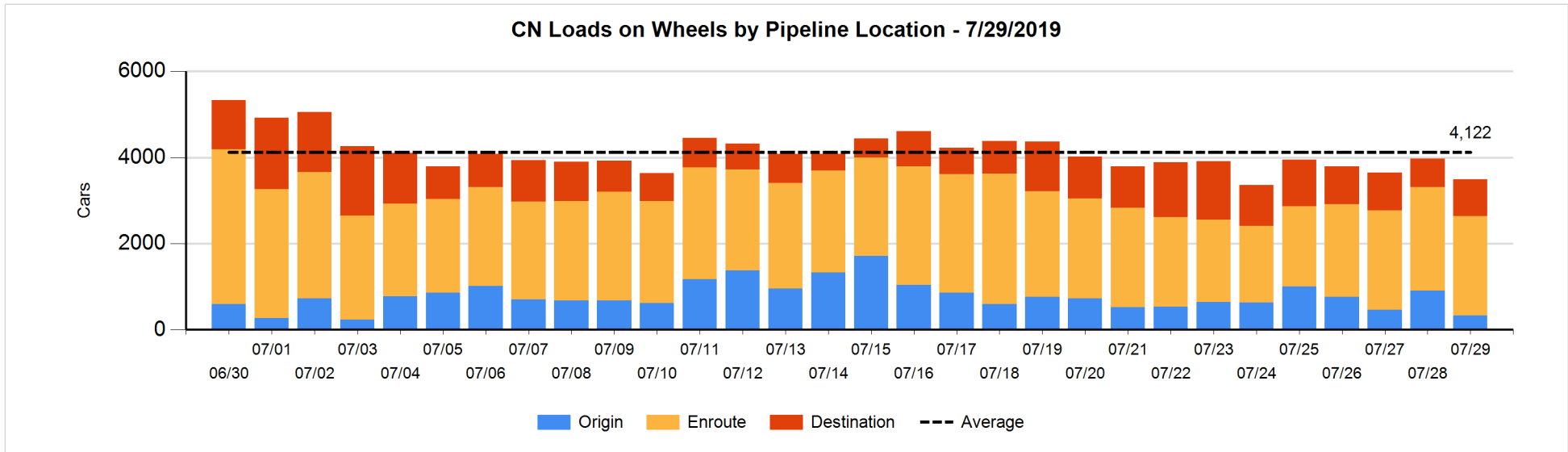


Daily Loads on Wheels By Pipeline Location - 7/29/2019

	E Canada	Prince Rupert	Thunder Bay	USA/MEX	Vancouver	Total
CN						
Origin	1			12	316	329
Enroute	450	519	102	99	1,143	2,313
Destination	106	23	161	14	539	843
	557	542	263	125	1,998	3,485
CP						
Origin	17		239	3	702	961
Enroute	47		454	3	841	1,345
Destination	4		249		1,106	1,359
	68		942	6	2,649	3,665
US Rail / Short Line						
Origin						
Enroute				40		40
Destination	7			17	37	61
	7			57	37	101

Change in Daily Loads on Wheels By Pipeline Location - Prior 24 Hours

	E Canada	Prince Rupert	Thunder Bay	USA/MEX	Vancouver	Total
CN						
Origin	1	-9		-12	-560	-580
Enroute	-105	6	-97	3	108	-85
Destination	33	3	61	2	75	174
	-71	0	-36	-7	-377	-491
CP						
Origin	10		-162	2	387	237
Enroute	7		265	-24	-390	-142
Destination	-2		-252		220	-34
	15		-149	-22	217	61
US Rail / Short Line						
Origin						
Enroute				12		12
Destination	-7			3	-16	-20
	-7			15	-16	-8

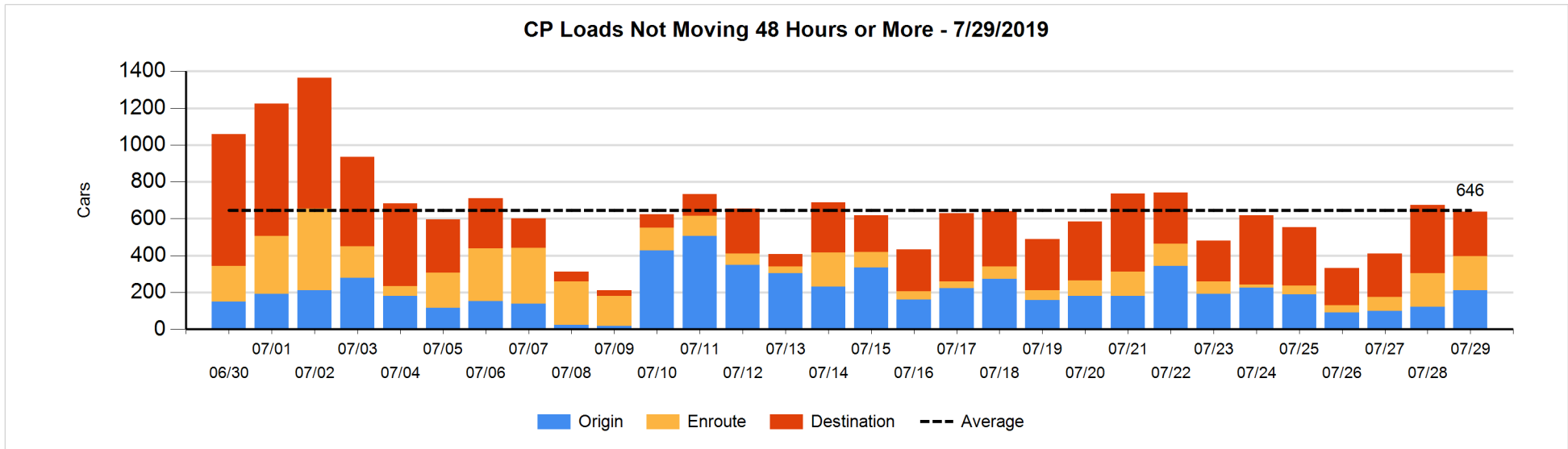
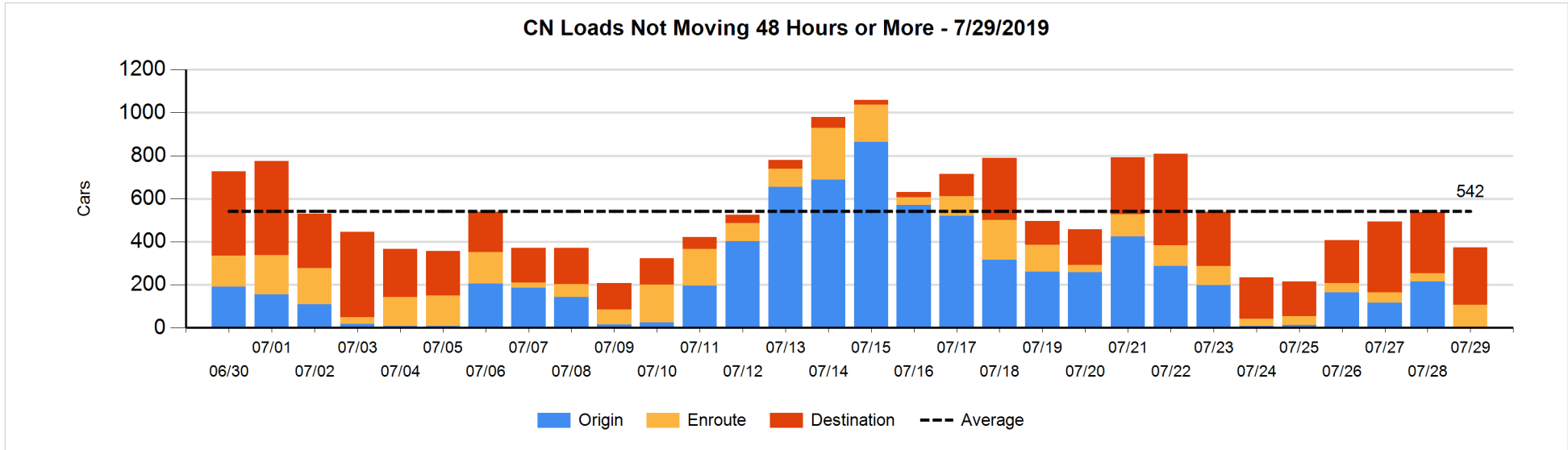


Loads Not Moving 48 Hours or More - 7/29/2019

	E Canada	Prince Rupert	Thunder Bay	USA/MEX	Vancouver	Total
CN						
Origin						
Enroute	39	62	1	3	2	107
Destination	8	7	11	8	233	267
	47	69	12	11	235	374
CP						
Origin	1		73	1	137	212
Enroute	21		10		154	185
Destination	4		79		159	242
	26		162	1	450	639
US Rail / Short Line						
Origin						
Enroute				16		16
Destination	7			7	34	48
	7			23	34	64

Change in Loads Not Moving 48 Hours or More - 7/29/2019

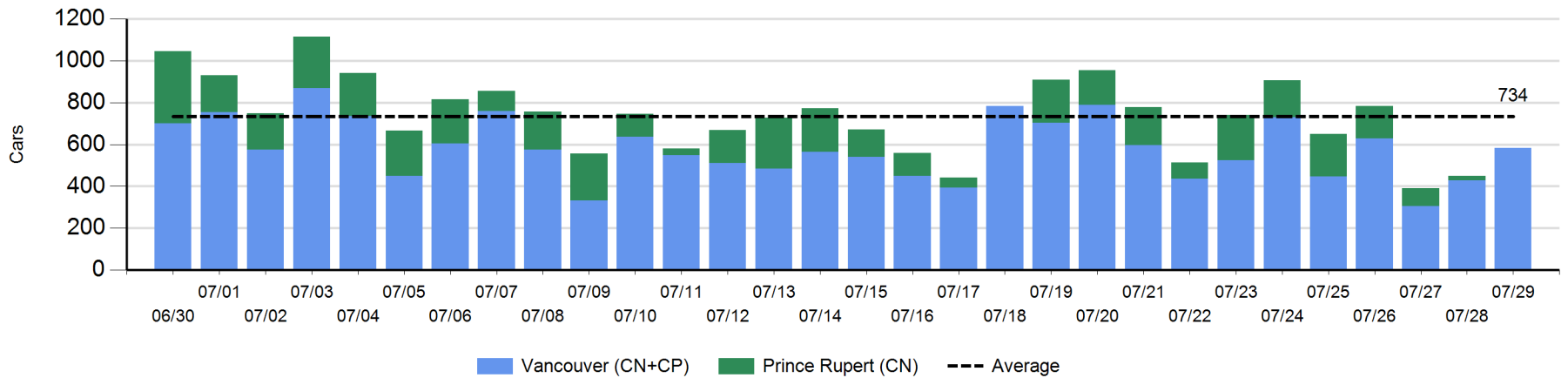
	E Canada	Prince Rupert	Thunder Bay	USA/MEX	Vancouver	Total
CN						
Origin		-9		-1	-204	-214
Enroute	29	45	0	-1	-5	68
Destination	-1	0	-28	4	7	-18
	28	36	-28	2	-202	-164
CP						
Origin	-6		0	0	97	91
Enroute	-3		4		0	1
Destination	-2		-38		-87	-127
	-11		-34	0	10	-35
US Rail / Short Line						
Origin						
Enroute				0		0
Destination	-7			1	-12	-18
	-7			1	-12	-18



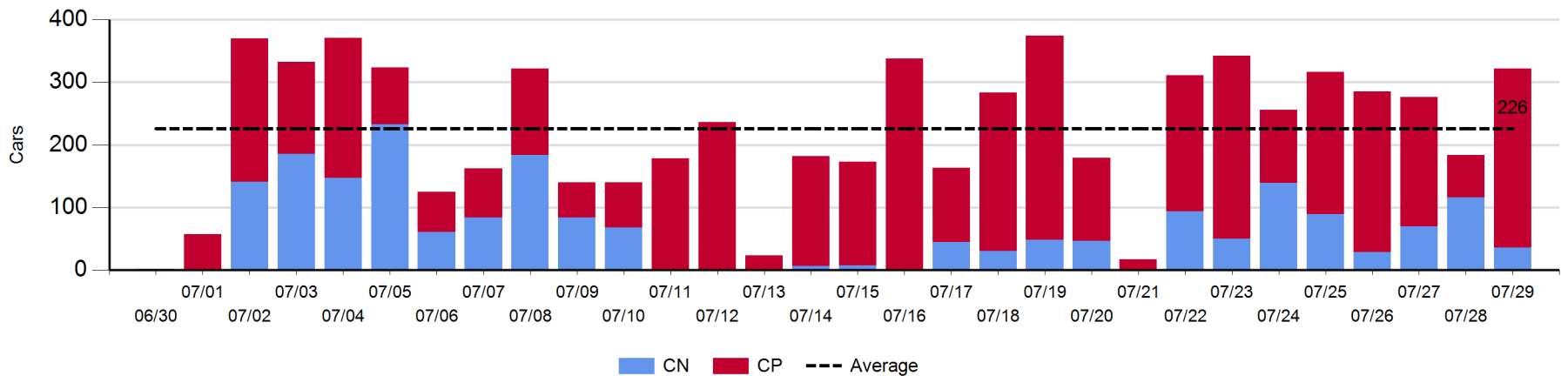
Port Unloads - 7/29/2019

	Prince Rupert	Vancouver	West Coast Total	Thunder Bay	Total
CN		133	133	36	169
CP		451	451	286	737
		584	584	322	906

West Coast Port Unloads - Prior 30 Days



Thunder Bay Port Unloads - Prior 30 Days



Port Terminal Status

Vancouver

Daily Activity for 7/29/2019

	Cars Arrived	Cars Received in Interchange	Cars Delivered in Interchange	Cars Placed for Unloading	Loads on Wheels at Destination As of 7/29/2019
CN	316	119	323	242	539
CP	569	321	122	422	1,106
SRY		5		12	37

Port Unloads

	07/29	07/28	Week To Date	Last Week
CN	133	95	133	1,272
CP	451	332	451	2,223
SRY	18	2	18	58

Age Profile of Loaded Cars Waiting Placement for Unloading

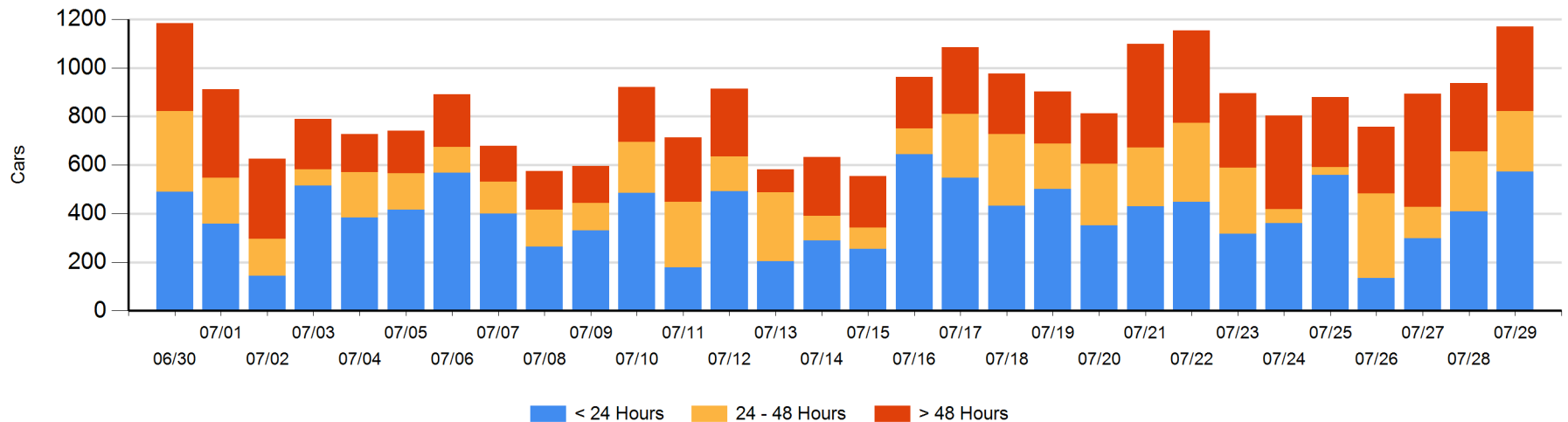
Today

	< 24 Hrs	24 - 48 Hrs	> 48-72 Hrs	> 72 Hrs	Total On Hand
CN	216	175	44	32	467
CP	357	74	142	130	703
SRY					0

Change in Last 24 Hours

	< 24 Hrs	24-48 Hrs	48 - 72 Hrs	> 72 Hrs
CN	53	131	44	-21
CP	110	-127	96	-53
SRY				

Loaded Cars on Hand Vancouver Waiting for Placement - Last 30 Days All Railways



Port Terminal Status

Prince Rupert

Daily Activity for 7/29/2019

	Cars Arrived	Cars Received in Interchange	Cars Delivered in Interchange	Cars Placed for Unloading	Loads on Wheels at Destination As of 7/29/2019
CN		3		16	23

Port Unloads

	07/29	07/28	Week To Date	Last Week
CN		22		939

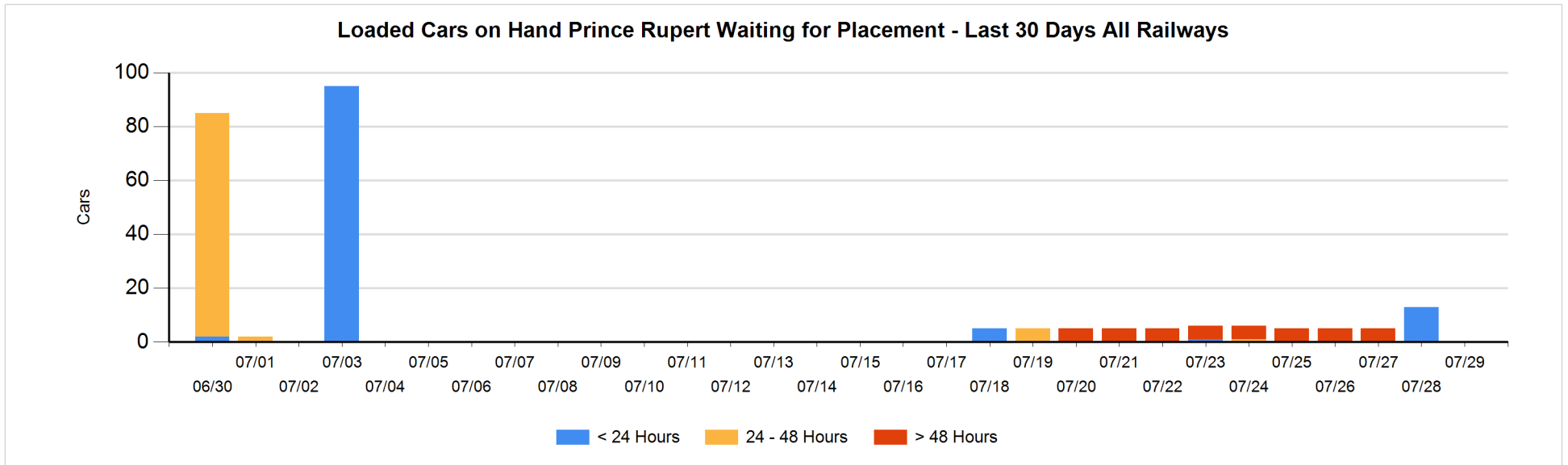
Age Profile of Loaded Cars Waiting Placement for Unloading

Today

	< 24 Hrs	24 - 48 Hrs	> 48-72 Hrs	> 72 Hrs	Total On Hand
CN					0

Change in Last 24 Hours

	< 24 Hrs	24-48 Hrs	48 - 72 Hrs	> 72 Hrs
CN	-13			



Port Terminal Status

Thunder Bay

Daily Activity for 7/29/2019

	Cars Arrived	Cars Received in Interchange	Cars Delivered in Interchange	Cars Placed for Unloading	Loads on Wheels at Destination As of 7/29/2019
CN	97			52	161
CP	35			234	249

Port Unloads

	07/29	07/28	Week To Date	Last Week
CN	36	116	36	587
CP	286	68	286	1,383

Age Profile of Loaded Cars Waiting Placement for Unloading

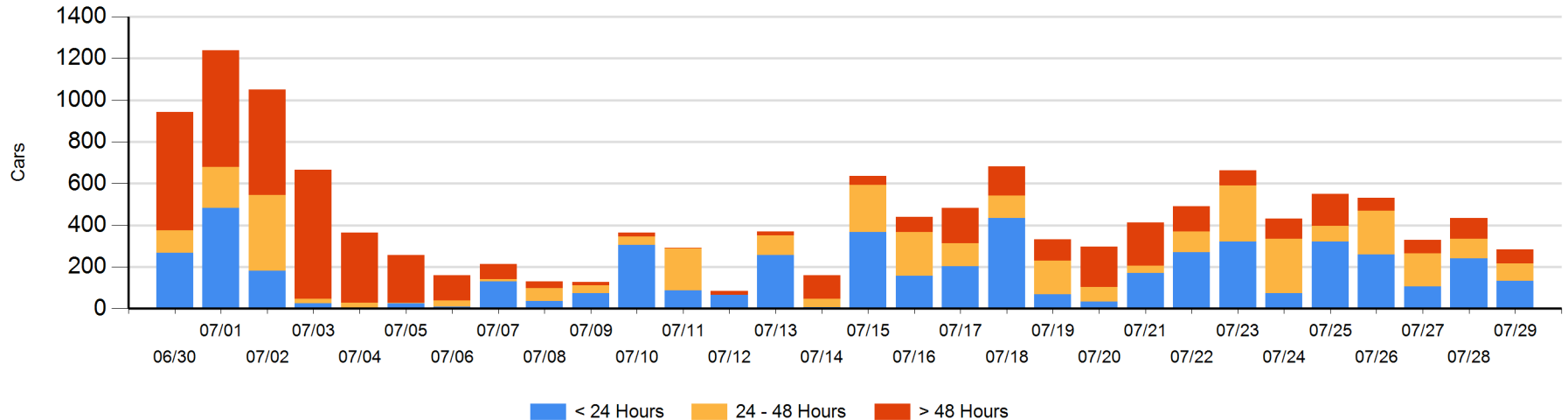
Today

	< 24 Hrs	24 - 48 Hrs	> 48-72 Hrs	> 72 Hrs	Total On Hand
CN	97		5	1	103
CP	35	85	40	20	180

Change in Last 24 Hours

	< 24 Hrs	24-48 Hrs	48 - 72 Hrs	> 72 Hrs
CN	97	-55	5	-2
CP	-205	45	-6	-31

Loaded Cars on Hand Thunder Bay Waiting for Placement - Last 30 Days All Railways



Measurement Definitions

Loads on Wheels	<p>Count of loaded rail cars including all rail cars that have been released loaded at origin and have not been reported by the railway as unloaded at destination.</p> <p>Counts include all rail cars (hopper cars and boxcars) moving within a pipeline.</p>
Loads Not Moving	<p>Loaded rail cars for which the railways have not reported a movement event for 48 hours or more whether the rail car is at origin, enroute or at destination.</p>
Port Unloads	<p>Count of rail cars reported by railways as unloaded at the western port destinations of Vancouver, Prince Rupert and Thunder Bay.</p> <p>Unload counts include all rail cars (hopper cars and boxcars) unloaded by all receivers including major port terminals, transloaders and other receivers.</p>
Cars Arrived	<p>Count of rail cars reported as arrived at the destination railway terminal.</p>
Cars Received in Interchange	<p>Count of rail cars received in interchange by each railway within a destination railway terminal. Interchange activity is tracked for the Vancouver and Thunder Bay pipelines as applicable.</p>
Cars Delivered in Interchange	<p>Count of rail cars delivered in interchange by each railway within a destination railway terminal. Interchange activity is tracked for the Vancouver and Thunder Bay pipelines as applicable.</p>
Cars Placed for Unloading	<p>Count of rail cars reported by the railways as placed loaded at the receiver's facility for unloading.</p>
Loads on Wheels at Destination	<p>Count of rail cars that remain under load within the destination railway terminal including rail cars that have been reported as placed for unloading but not yet reported as unloaded.</p>
Waiting Placement for Unloading	<p>Count of rail cars that have been reported as arrived at the destination railway terminal but not reported as placed for unloading by the railway.</p> <p>For the Ports of Vancouver, Prince Rupert and Thunder Bay the count of rail cars waiting placement for unloading is categorized by age – i.e. the elapsed time from arrival at destination to the current report date.</p>