

SPEED READ

- Loads on wheels increased marginally overnight, reflecting an increase in both CN and CP volumes. On a net basis, volumes increased due to higher volumes in the E. Canada and Thunder Bay corridors offset by lower traffic in the USA/MEX, Vancouver and Prince Rupert corridors.
- Network fluidity improved overnight, led by a decline in idle car counts on both CN and CP by 33% (-161) and 38% (-368), respectively. The total count of cars for 4+ days on both railways increased 6% (+25) overnight - now at 429 cars.
- One day in Week 45 unloads now ahead of prior week's performance by about 50 unloads, reflecting improved week over week performance at Vancouver offset by lower unloads at Prince Rupert and Thunder Bay.

Loads on Wheels

- Loads on wheels increased for the ninth consecutive day, up 1% (+65) overnight, due to higher traffic on both CN and CP - combined total at 8,899 and 3% above the trailing 30-day average.
- On a net basis, the increase in loads on wheels indicates higher volumes in the E. Canada and Thunder Bay corridors offset by lower traffic in the USA/MEX, Vancouver and Prince Rupert corridors.
- CN volumes rose for the third consecutive day, up (+12) overnight, with higher traffic in the E. Canada and USA/MEX corridors offset by lower volumes in the Prince Rupert, Vancouver and Thunder Bay corridors. System wide CN loads on wheels now at 4,205 and in line with the trailing 30-day average.
- CP volumes rose 2% (+90) overnight, driven by a rise in traffic in the E. Canada and Thunder Bay corridors offset by a decline in volumes in the USA/MEX and Vancouver corridors. CP system wide loads on wheels now at 4,500 and 5% above the trailing 30-day average.
- Vancouver presently at 5,098, decreased slightly by 1% (-60) overnight and have now decreased for the third consecutive day, now 2% below the trailing 30-day average.
- The Prince Rupert pipeline presently at 1,445, decreased 3% (-45) overnight, and 14% above the trailing 30-day average.
- Thunder Bay volumes increased for the third consecutive day, up 5% (+64) overnight - presently at 1,282 and 1% above the trailing 30-day average, with 65% of traffic moving on CP.

Hopper Car Rationing

- CN rationed no hopper cars in week 43.

Loads Not Moving

- **The count of cars not moving for 48+ hours decreased 36% (-529) overnight, reflecting lower counts on both CN and CP. Idle car counts now at 939 and 33% below the trailing 30-day average.**
- CN
 - **The count of idle cars for 48+ hours declined 33% (-161) overnight - now at 332 cars.**
 - The number of cars idle for 4+ days decreased significantly by 61% (-97) overnight - now at 62 cars.
 - The count of cars not moving for 7+ days increased 8% (+3) overnight - presently at 43 cars.
 - Vancouver represents 31% of all idle cars.
 - In total 25% of all idle cars are dwelling at origin locations.
- CP
 - **CP idle car counts for 48+ hours decreased 38% (-368) overnight - now at 607 cars.**
 - The number of cars idle for 4+ days increased significantly by 50% (+122) overnight - now at 367 cars.

- The number of cars idle for 7+ days rose significantly by 50% (+11) overnight - now at 33 cars.
- Vancouver accounts for 81% of all idle cars.
- In total 11% of all idle cars are dwelling at origin locations.

Port Performance

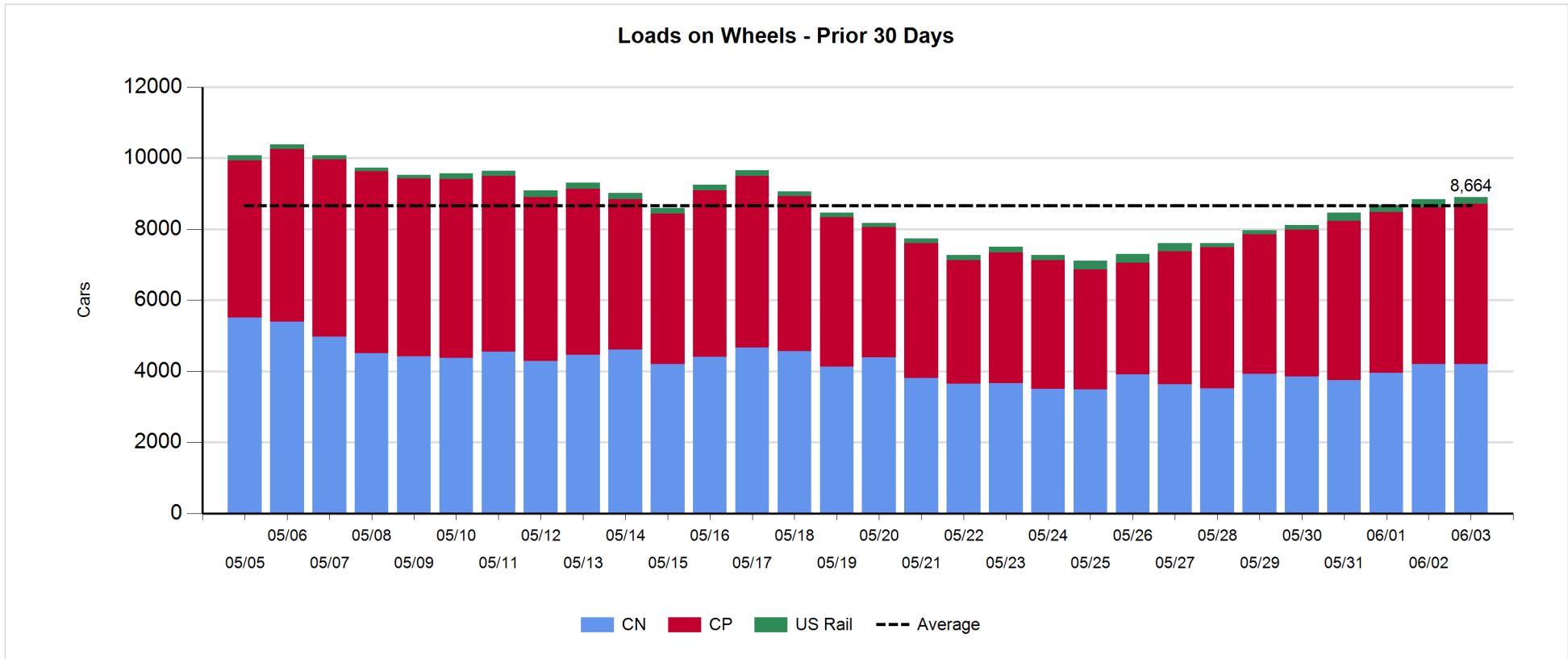
- CN and CP reported a total of 1,115 cars unloaded at the three major ports, now 3% above the trailing 30-day average. One day in Week 45 unloads now ahead of last week's pace by about 50 unloads, reflecting higher unloads at Vancouver offset by lower unloads at Prince Rupert and Thunder Bay.
- Vancouver
 - 718 unloads reported by CN and CP at the Port of Vancouver; CN - 248 and CP - 470. One day in Week 45 unloads are tracking ahead of last week's performance by more than 150 unloads.
 - There are 1,300 cars on site at Vancouver with 600 cars arriving at the port in the last 24 hours.
 - CN and CP have more than 1,250 cars in British Columbia en route to Vancouver, with about 700 cars at Kamloops and west, and 80% of traffic moving on CP.
- Prince Rupert
 - Prince Rupert reported 95 unloads, now behind last week's unloads after one day by more than 100 unloads.
 - Loads on wheels now above 1,000 cars - now at 1,445 cars.
 - There are 700 cars west of Jasper en route to Prince Rupert.
 - There are 34 cars on site at Prince Rupert with more than 100 cars arriving at the port in the last 24 hours.
- Thunder Bay
 - 302 unloads were reported at Thunder Bay yesterday. One day in Week 45 unloads are tracking behind last week's pace by 19 unloads.
 - There are fewer than 700 cars on site at Thunder Bay with more than 400 cars arriving at the port in the prior 24 hours.
 - There are more than 100 cars en route to Thunder Bay from Winnipeg and east.

Daily Loads on Wheels - 6/3/2019

	E Canada	Prince Rupert	Thunder Bay	USA/MEX	Vancouver	Total
CN	424	1,445	453	214	1,669	4,205
CP	192		829	110	3,369	4,500
Short Line	8				60	68
US Rail				126		126
	624	1,445	1,282	450	5,098	8,899

Change in Loads on Wheels - Prior 24 Hours

	E Canada	Prince Rupert	Thunder Bay	USA/MEX	Vancouver	Total
CN	93	-45	-10	1	-27	12
CP	93		74	-55	-22	90
Short Line	0				-11	-11
US Rail				-26		-26
	186	-45	64	-80	-60	65

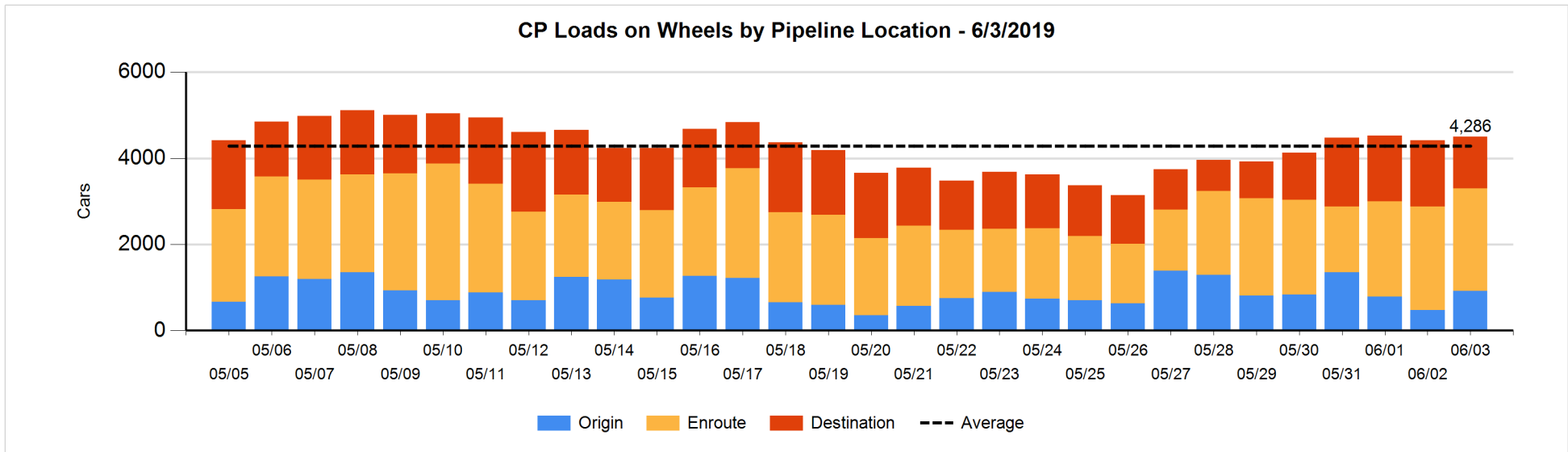
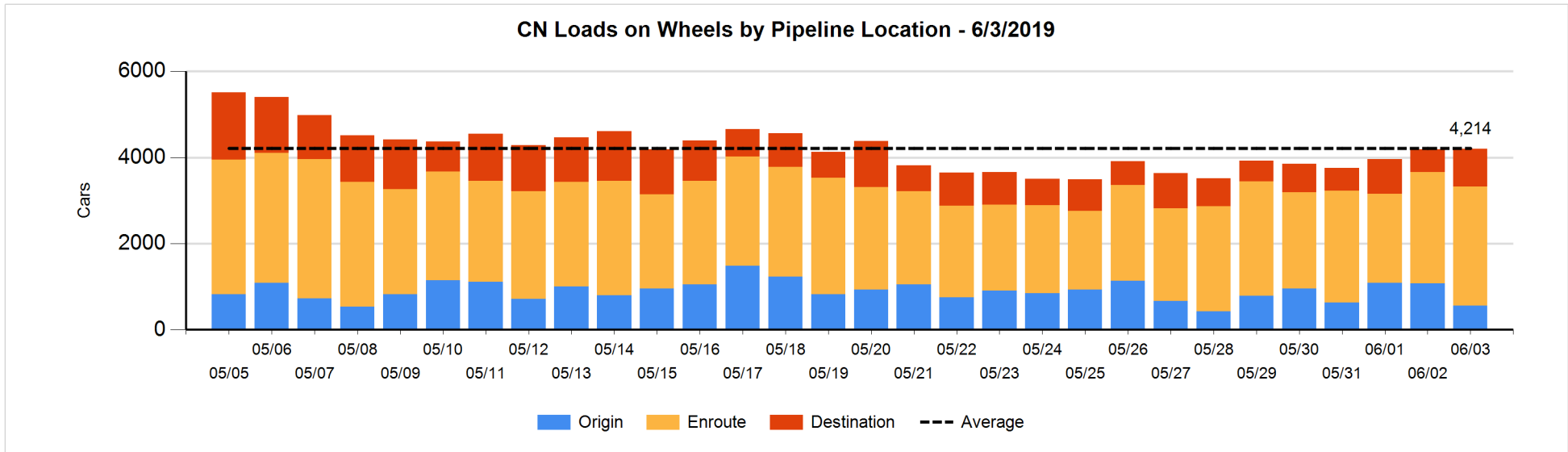


Daily Loads on Wheels By Pipeline Location - 6/3/2019

	E Canada	Prince Rupert	Thunder Bay	USA/MEX	Vancouver	Total
CN						
Origin	108	135	103	6	210	562
Enroute	300	1,276	99	146	936	2,757
Destination	16	34	251	62	523	886
	424	1,445	453	214	1,669	4,205
CP						
Origin	113		369		440	922
Enroute	32		31	98	2,211	2,372
Destination	47		429	12	719	1,207
	192		829	110	3,370	4,501
US Rail / Short Line						
Origin						
Enroute				97		97
Destination	8			29	60	97
	8			126	60	194

Change in Daily Loads on Wheels By Pipeline Location - Prior 24 Hours

	E Canada	Prince Rupert	Thunder Bay	USA/MEX	Vancouver	Total
CN						
Origin	107	-259	-98	6	-274	-518
Enroute	-3	186	-57	-53	104	177
Destination	-11	28	145	48	143	353
	93	-45	-10	1	-27	12
CP						
Origin	111		366	-2	-21	454
Enroute	-9		-274	-18	261	-40
Destination	-9		-18	-35	-262	-324
	93		74	-55	-22	90
US Rail / Short Line						
Origin						
Enroute				3		3
Destination	0			-29	-11	-40
	0			-26	-11	-37

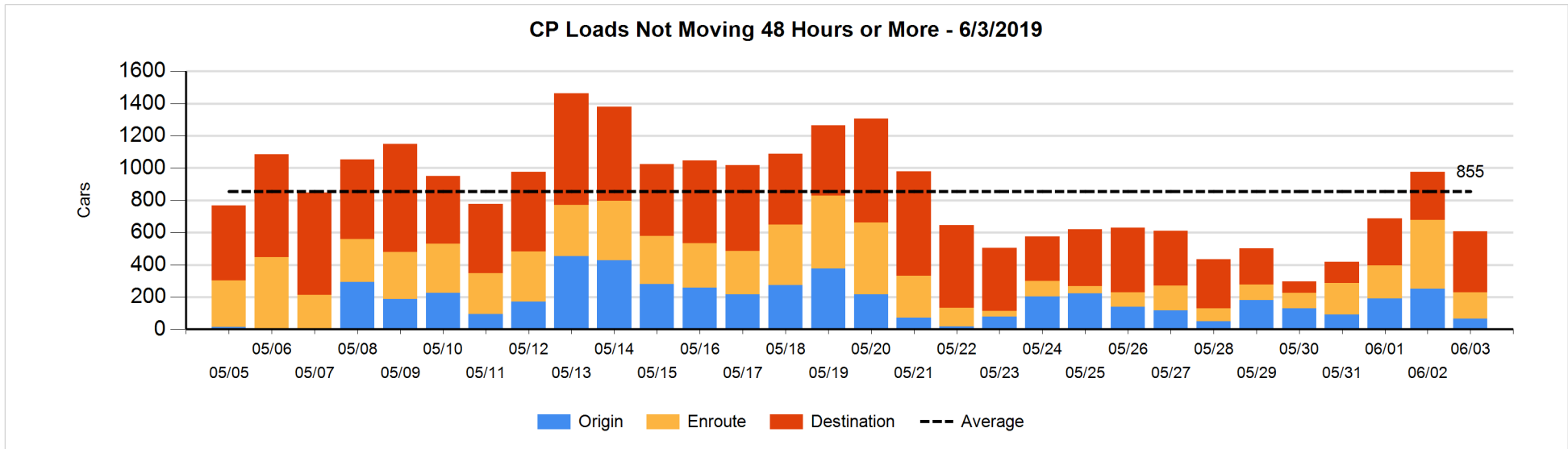
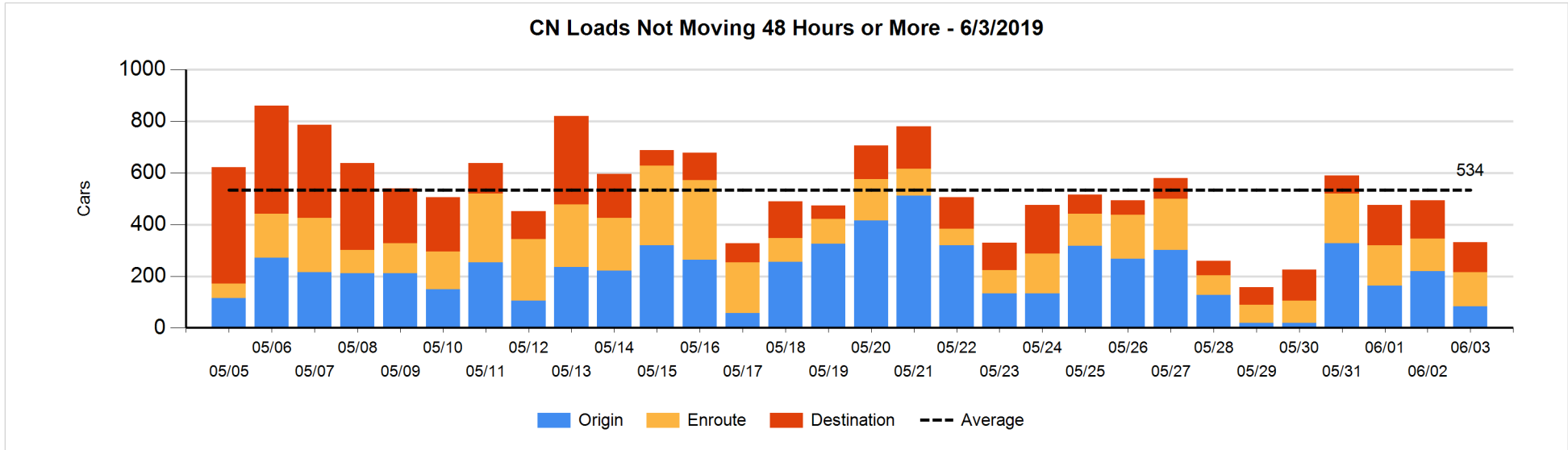


Loads Not Moving 48 Hours or More - 6/3/2019

	E Canada	Prince Rupert	Thunder Bay	USA/MEX	Vancouver	Total
CN						
Origin		9			74	83
Enroute	42	53	1	13	24	133
Destination	3	2	96	10	5	116
	45	64	97	23	103	332
CP						
Origin	2		3		61	66
Enroute	22		1	21	119	163
Destination	6		59		313	378
	30		63	21	493	607
US Rail / Short Line						
Origin						
Enroute				26		26
Destination	7			26	18	51
	7			52	18	77

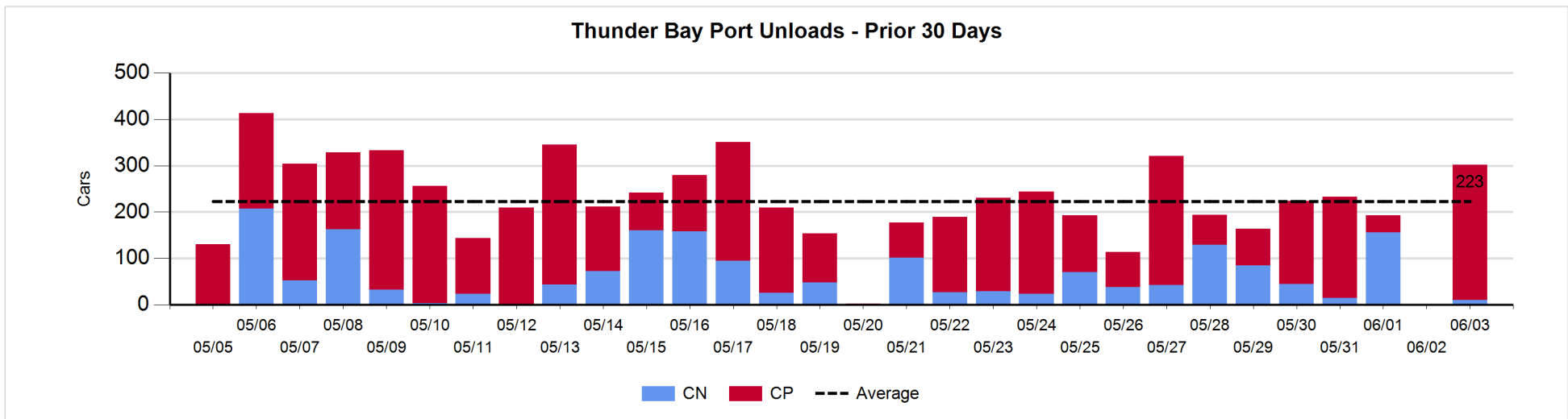
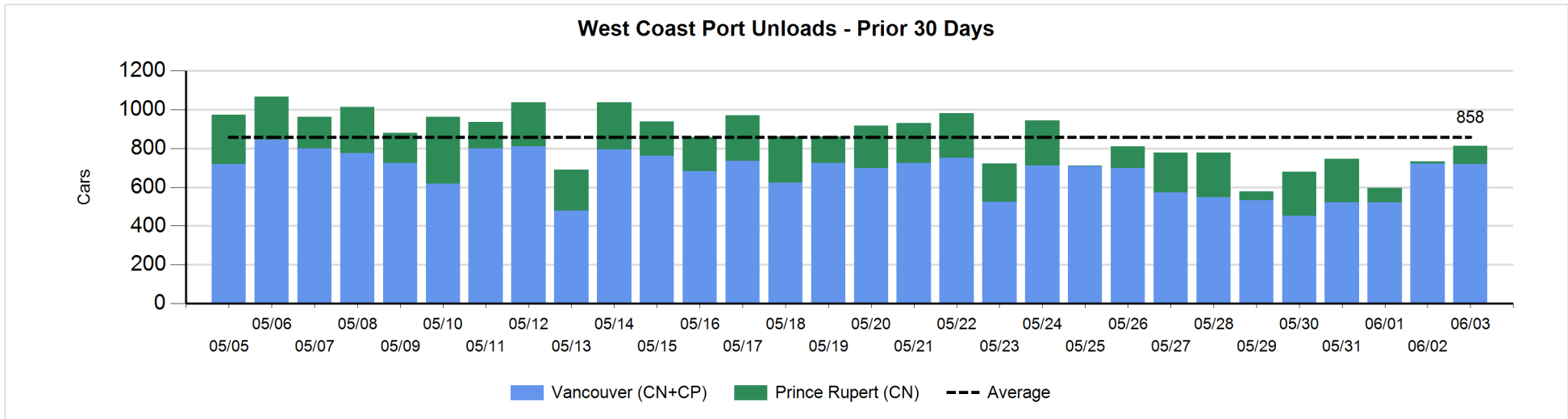
Change in Loads Not Moving 48 Hours or More - 6/3/2019

	E Canada	Prince Rupert	Thunder Bay	USA/MEX	Vancouver	Total
CN						
Origin	-1	2			-137	-136
Enroute	20	-3	0	0	-10	7
Destination	-1	0	90	-1	-120	-32
	18	-1	90	-1	-267	-161
CP						
Origin	0		0	-2	-182	-184
Enroute	18		0	-42	-242	-266
Destination	-1		-1	-6	90	82
	17		-1	-50	-334	-368
US Rail / Short Line						
Origin						
Enroute				-2		-2
Destination	-1			-27	-19	-47
	-1			-29	-19	-49



Port Unloads - 6/3/2019

	Prince Rupert	Vancouver	West Coast Total	Thunder Bay	Total
CN	95	248	343	10	353
CP		470	470	292	762
	95	718	813	302	1,115



Port Terminal Status

Vancouver

Daily Activity for 6/3/2019

	Cars Arrived	Cars Received in Interchange	Cars Delivered in Interchange	Cars Placed for Unloading	Loads on Wheels at Destination As of 6/3/2019
CN	394	245	107	193	523
CP	214	104	254	343	719
SRY	1	12		29	60

Port Unloads

	06/03	06/02	Week To Date	Last Week
CN	248	314	248	1,083
CP	470	409	470	2,788
SRY	24	6	24	63

Age Profile of Loaded Cars Waiting Placement for Unloading

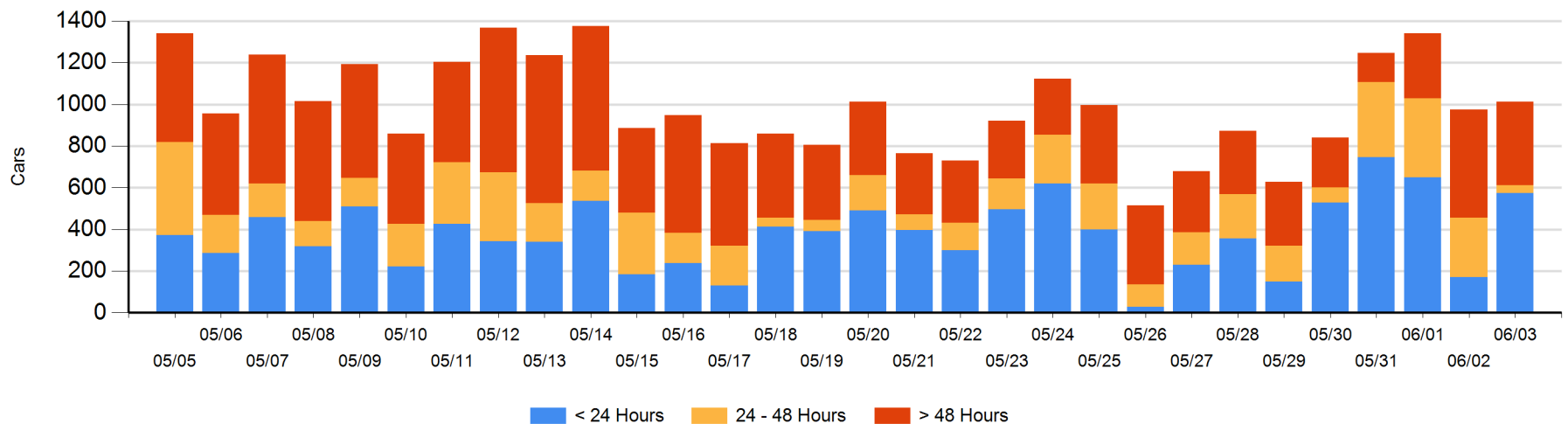
Today

	< 24 Hrs	24 - 48 Hrs	> 48-72 Hrs	> 72 Hrs	Total On Hand
CN	362	3		7	372
CP	211	37	10	383	641
SRY					0

Change in Last 24 Hours

	< 24 Hrs	24-48 Hrs	48 - 72 Hrs	> 72 Hrs
CN	351	-208		-3
CP	51	-37	-254	139
SRY				

Loaded Cars on Hand Vancouver Waiting for Placement - Last 30 Days All Railways



Port Terminal Status

Prince Rupert

Daily Activity for 6/3/2019

	Cars Arrived	Cars Received in Interchange	Cars Delivered in Interchange	Cars Placed for Unloading	Loads on Wheels at Destination As of 6/3/2019
CN	123			124	34

Port Unloads

	06/03	06/02	Week To Date	Last Week
CN	95	10	95	1,016

Age Profile of Loaded Cars Waiting Placement for Unloading

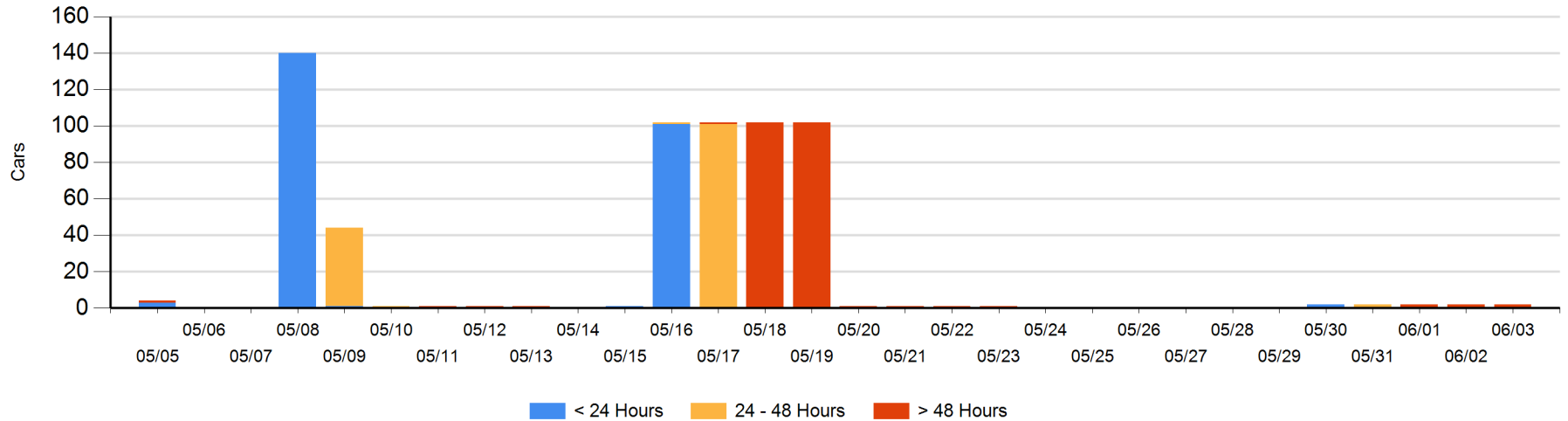
Today

	< 24 Hrs	24 - 48 Hrs	> 48-72 Hrs	> 72 Hrs	Total On Hand
CN				2	2

Change in Last 24 Hours

	< 24 Hrs	24-48 Hrs	48 - 72 Hrs	> 72 Hrs
CN				0

Loaded Cars on Hand Prince Rupert Waiting for Placement - Last 30 Days All Railways



Port Terminal Status

Thunder Bay

Daily Activity for 6/3/2019

	Cars Arrived	Cars Received in Interchange	Cars Delivered in Interchange	Cars Placed for Unloading	Loads on Wheels at Destination As of 6/3/2019
CN	155			102	251
CP	274			1	429

Port Unloads

	06/03	06/02	Week To Date	Last Week
CN	10		10	473
CP	292	1	292	857

Age Profile of Loaded Cars Waiting Placement for Unloading

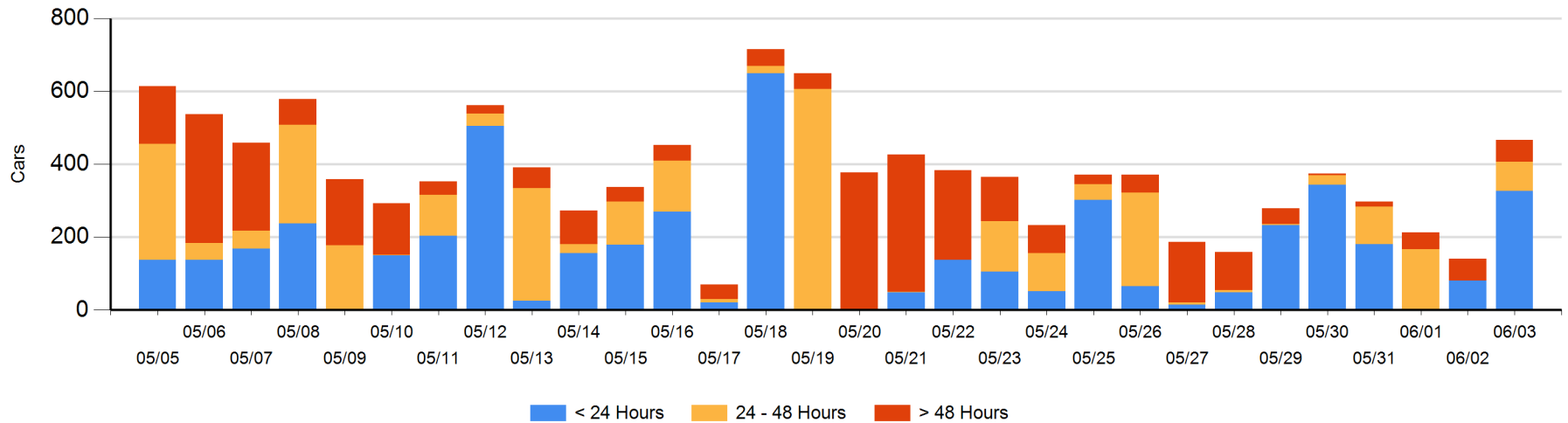
Today

	< 24 Hrs	24 - 48 Hrs	> 48-72 Hrs	> 72 Hrs	Total On Hand
CN	53				53
CP	274	80		59	413

Change in Last 24 Hours

	< 24 Hrs	24-48 Hrs	48 - 72 Hrs	> 72 Hrs
CN	53			
CP	194	80	-18	17

Loaded Cars on Hand Thunder Bay Waiting for Placement - Last 30 Days All Railways



Measurement Definitions

Loads on Wheels	<p>Count of loaded rail cars including all rail cars that have been released loaded at origin and have not been reported by the railway as unloaded at destination.</p> <p>Counts include all rail cars (hopper cars and boxcars) moving within a pipeline.</p>
Loads Not Moving	<p>Loaded rail cars for which the railways have not reported a movement event for 48 hours or more whether the rail car is at origin, enroute or at destination.</p>
Port Unloads	<p>Count of rail cars reported by railways as unloaded at the western port destinations of Vancouver, Prince Rupert and Thunder Bay.</p> <p>Unload counts include all rail cars (hopper cars and boxcars) unloaded by all receivers including major port terminals, transloaders and other receivers.</p>
Cars Arrived	<p>Count of rail cars reported as arrived at the destination railway terminal.</p>
Cars Received in Interchange	<p>Count of rail cars received in interchange by each railway within a destination railway terminal. Interchange activity is tracked for the Vancouver and Thunder Bay pipelines as applicable.</p>
Cars Delivered in Interchange	<p>Count of rail cars delivered in interchange by each railway within a destination railway terminal. Interchange activity is tracked for the Vancouver and Thunder Bay pipelines as applicable.</p>
Cars Placed for Unloading	<p>Count of rail cars reported by the railways as placed loaded at the receiver's facility for unloading.</p>
Loads on Wheels at Destination	<p>Count of rail cars that remain under load within the destination railway terminal including rail cars that have been reported as placed for unloading but not yet reported as unloaded.</p>
Waiting Placement for Unloading	<p>Count of rail cars that have been reported as arrived at the destination railway terminal but not reported as placed for unloading by the railway.</p> <p>For the Ports of Vancouver, Prince Rupert and Thunder Bay the count of rail cars waiting placement for unloading is categorized by age – i.e. the elapsed time from arrival at destination to the current report date.</p>