

SPEED READ

- Loads on wheels decreased overnight, reflecting a decline in both CN and CP volumes. On a net basis, volumes fell due to lower traffic across all corridors other than USA/MEX.
- Network fluidity improved overnight, led by a decline in idle car counts on CP by 21% (-107) offset by a rise in idle car counts on CN by 17% (+46). The total count of cars for 4+ days on both railways decreased 34% (-117) overnight - now at 232 cars.
- Three days in Week 45 unloads now ahead of prior week's performance by 850 unloads, marking improved week over week performance across all three major ports - Vancouver, Thunder Bay and Prince Rupert.

Loads on Wheels

- Loads on wheels decreased 7% (-667) overnight, due to lower volumes on both CN and CP - combined total at 8,671 and 1% above the trailing 30-day average.
- On a net basis, the decline in loads on wheels indicates lower traffic across all corridors other than USA/MEX.
- CN volumes declined 8% (-355) overnight, with lower volumes across all corridors other than USA/MEX. System wide CN loads on wheels now at 4,193 and 1% above the trailing 30-day average.
- CP volumes declined 6% (-264) overnight, driven by a decline in volumes across all corridors other than USA/MEX. CP system wide loads on wheels now at 4,335 and 1% above the trailing 30-day average.
- Vancouver now at 4,964, decreased 6% (-340) overnight, now 3% below the trailing 30-day average.
- The Prince Rupert pipeline now at 1,336, fell significantly by 15% (-227) overnight, and 6% above the trailing 30-day average.
- Thunder Bay volumes declined significantly by 13% (-163) overnight - now at 1,107 and 11% below the trailing 30-day average, with 74% of traffic moving on CP.

Hopper Car Rationing

- CN rationed no hopper cars in week 43.

Loads Not Moving

- **The count of cars not moving for 48+ hours decreased for the third consecutive day, down 8% (-61) overnight, reflecting reduced counts on CP offset by higher counts on CN. Idle car counts presently at 724 and 46% below the trailing 30-day average.**
- CN
 - **The count of idle cars for 48+ hours increased 17% (+46) overnight - presently at 322 cars.**
 - The number of cars idle for 4+ days decreased 42% (-43) overnight - now at 59 cars.
 - The count of cars not moving for 7+ days declined 26% (-11) overnight - presently at 31 cars, the lowest seen in the last 30 days.
 - Vancouver represents 5% of all idle cars.
 - In total 62% of all idle cars are dwelling at origin locations.
- CP
 - **CP idle car counts for 48+ hours decreased 21% (-107) overnight and have now decreased for the third consecutive day - presently at 402 cars.**
 - The number of cars idle for 4+ days fell 30% (-74) overnight - now at 173 cars.
 - The number of cars idle for 7+ days increased significantly by 190% (+55) overnight - now at 84 cars.

- Vancouver accounts for 79% of all idle cars.
- In total 9% of all idle cars are dwelling at origin locations.

Port Performance

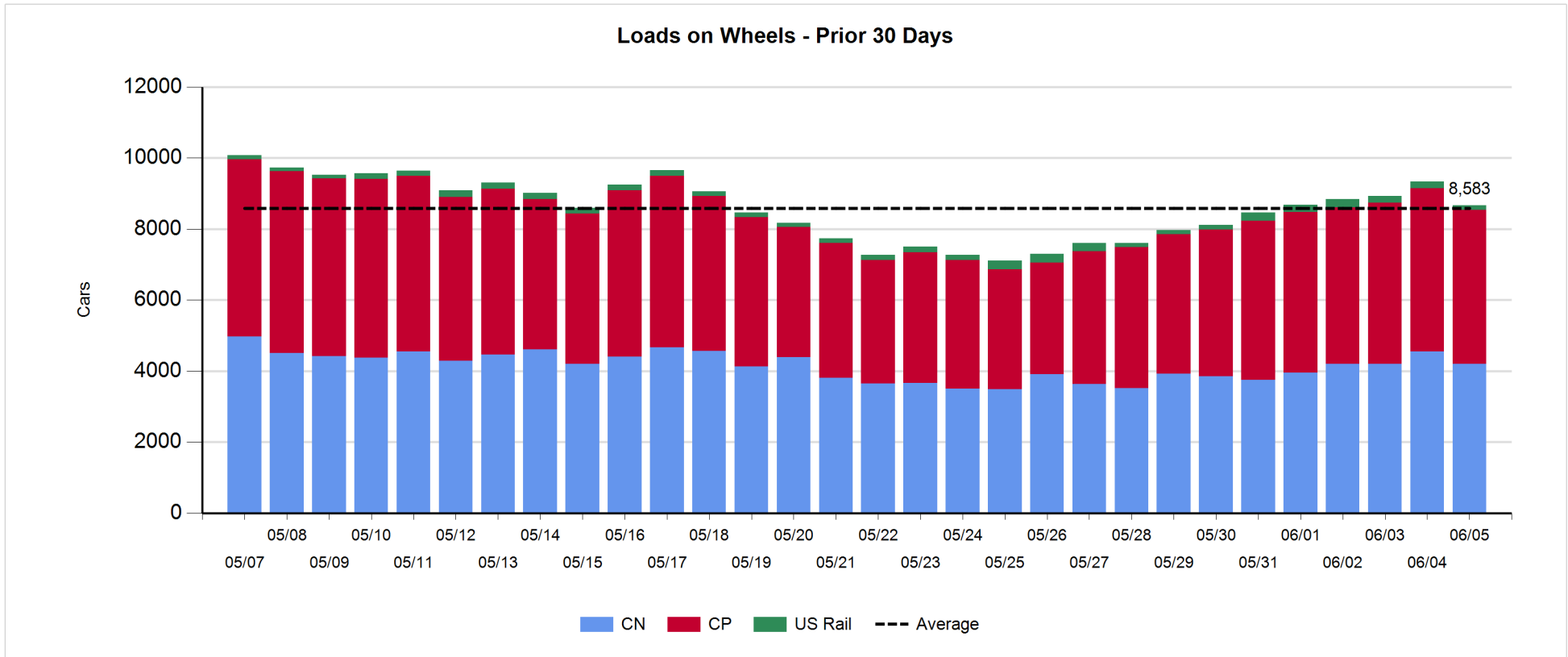
- CN and CP reported a total of 1,073 cars unloaded at the three major ports, now 1% below the trailing 30-day average. Three days in Week 45 unloads now ahead of last week's pace by 850 unloads, marking higher unloads across all three major ports - Vancouver, Thunder Bay and Prince Rupert.
- Vancouver
 - 666 unloads reported by CN and CP at the Port of Vancouver; CN - 205 and CP - 461. Three days in Week 45 unloads are tracking ahead of last week's performance by more than 600 unloads.
 - There are fewer than 1,050 cars on site at Vancouver with nearly 350 cars arriving at the port in the last 24 hours.
 - CN and CP have 1,650 cars in British Columbia en route to Vancouver, with 800 cars at Kamloops and west, and 77% of traffic moving on CP.
- Prince Rupert
 - Prince Rupert reported 238 unloads, now ahead of last week's unloads after three days by 50 unloads.
 - Loads on wheels now above 1,000 cars - now at 1,336 cars.
 - There are more than 400 cars west of Jasper en route to Prince Rupert.
 - There are fewer than 200 cars on site at Prince Rupert with 300 cars arriving at the port in the last 24 hours.
- Thunder Bay
 - 169 unloads were reported at Thunder Bay yesterday. Three days in Week 45 unloads are tracking ahead of last week's pace by 200 unloads.
 - There are nearly 500 cars on site at Thunder Bay with more than 200 cars arriving at the port in the prior 24 hours.
 - There are more than 200 cars en route to Thunder Bay from Winnipeg and east.

Daily Loads on Wheels - 6/5/2019

	E Canada	Prince Rupert	Thunder Bay	USA/MEX	Vancouver	Total
CN	494	1,336	291	223	1,849	4,193
CP	187		816	243	3,089	4,335
Short Line	9				26	35
US Rail				108		108
	690	1,336	1,107	574	4,964	8,671

Change in Loads on Wheels - Prior 24 Hours

	E Canada	Prince Rupert	Thunder Bay	USA/MEX	Vancouver	Total
CN	-7	-227	-46	26	-101	-355
CP	-7		-117	76	-216	-264
Short Line	-3				-23	-26
US Rail				-22		-22
	-17	-227	-163	80	-340	-667

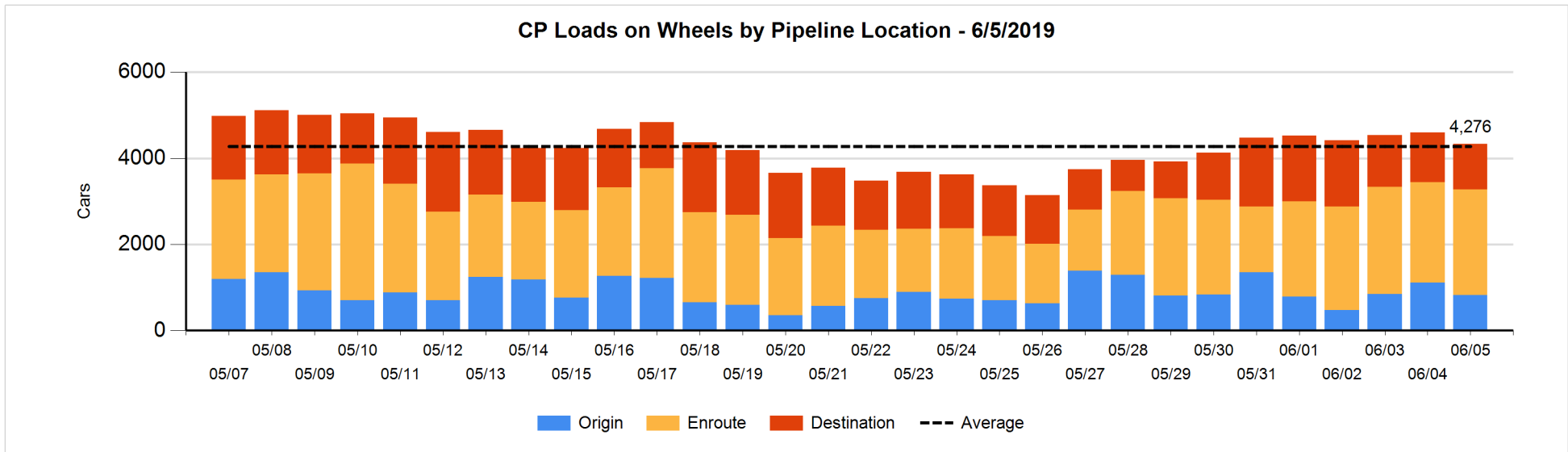
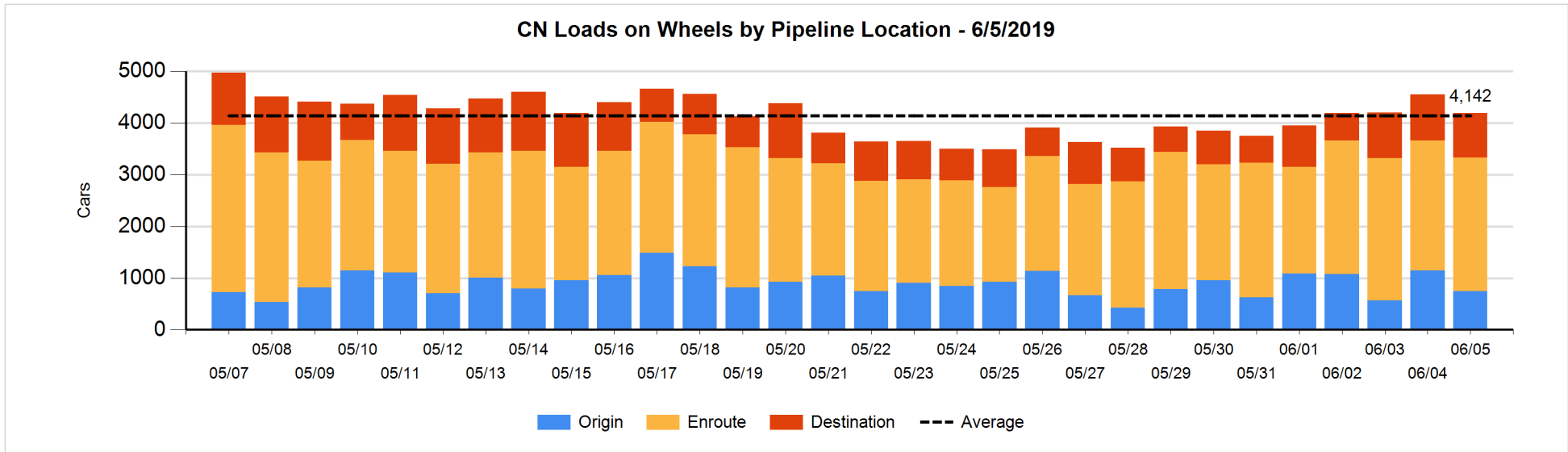


Daily Loads on Wheels By Pipeline Location - 6/5/2019

	E Canada	Prince Rupert	Thunder Bay	USA/MEX	Vancouver	Total
CN						
Origin	159	309		30	247	745
Enroute	183	840	104	148	1,307	2,582
Destination	152	187	187	45	295	866
	494	1,336	291	223	1,849	4,193
CP						
Origin	11		161	197	454	823
Enroute	141		357	28	1,925	2,451
Destination	35		298	18	711	1,062
	187		816	243	3,090	4,336
US Rail / Short Line						
Origin						
Enroute				86		86
Destination	9			22	26	57
	9			108	26	143

Change in Daily Loads on Wheels By Pipeline Location - Prior 24 Hours

	E Canada	Prince Rupert	Thunder Bay	USA/MEX	Vancouver	Total
CN						
Origin	-67	-148		20	-205	-400
Enroute	-62	-135	0	10	258	71
Destination	122	56	-46	-4	-154	-26
	-7	-227	-46	26	-101	-355
CP						
Origin	-52		-181	100	-155	-288
Enroute	54		-37	-21	120	116
Destination	-9		101	-3	-181	-92
	-7		-117	76	-216	-264
US Rail / Short Line						
Origin	-5					-5
Enroute				-1		-1
Destination	2			-21	-23	-42
	-3			-22	-23	-48

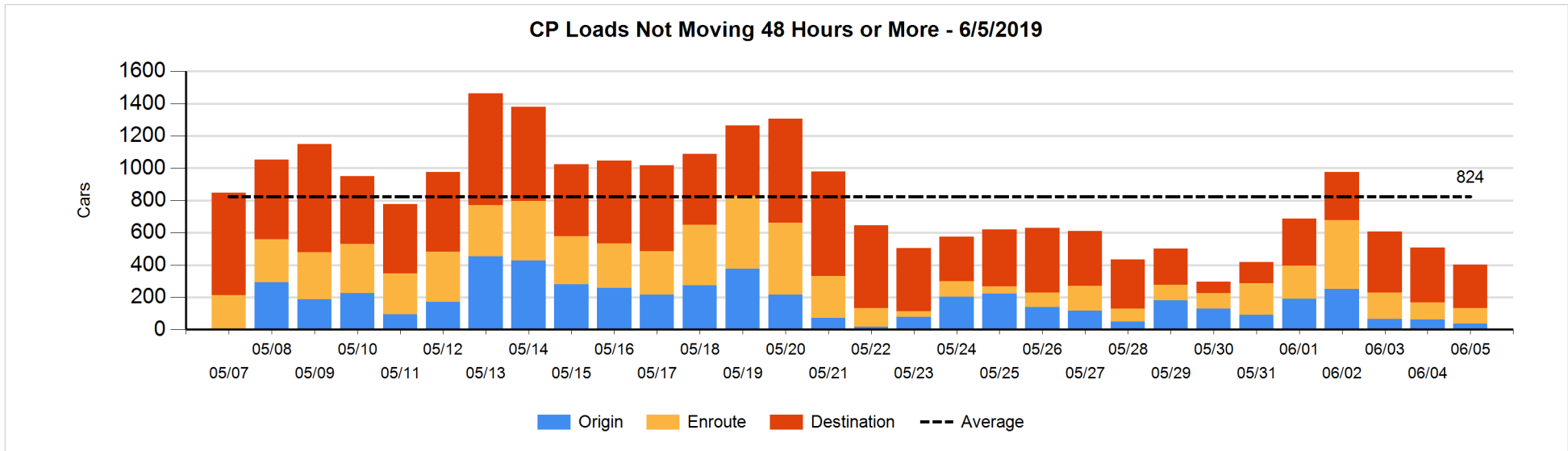
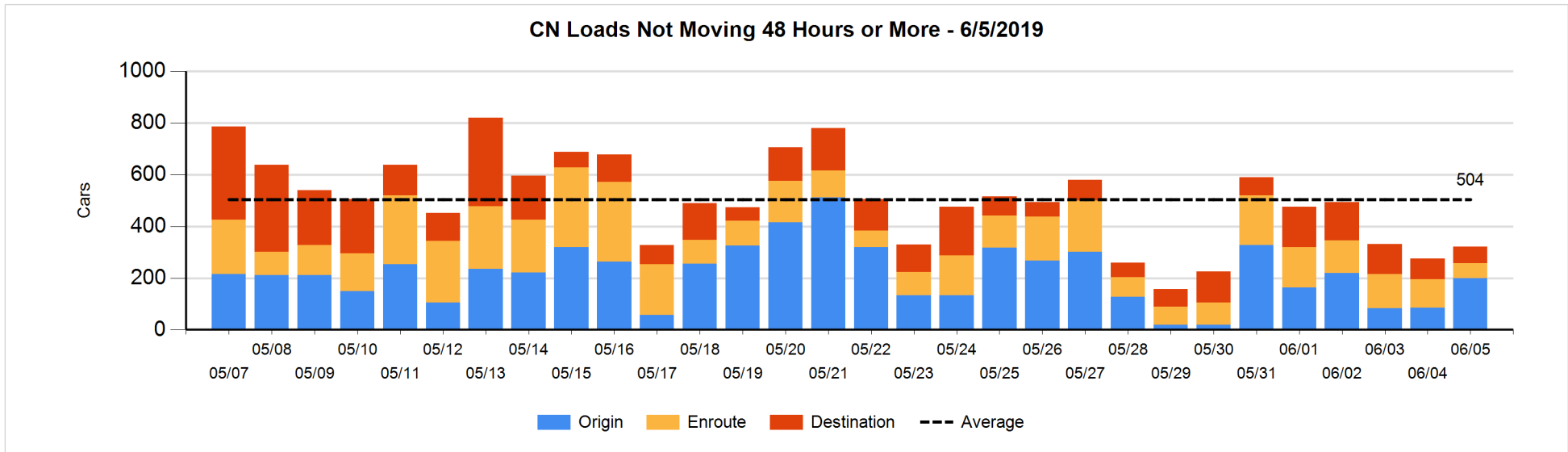


Loads Not Moving 48 Hours or More - 6/5/2019

	E Canada	Prince Rupert	Thunder Bay	USA/MEX	Vancouver	Total
CN						
Origin	108	85			6	199
Enroute	8	27	1	14	8	58
Destination	2	1	36	25	1	65
	118	113	37	39	15	322
CP						
Origin	3				35	38
Enroute	2		2	22	70	96
Destination	34		22		212	268
	39		24	22	317	402
US Rail / Short Line						
Origin						
Enroute				22		22
Destination	7			19	6	32
	7			41	6	54

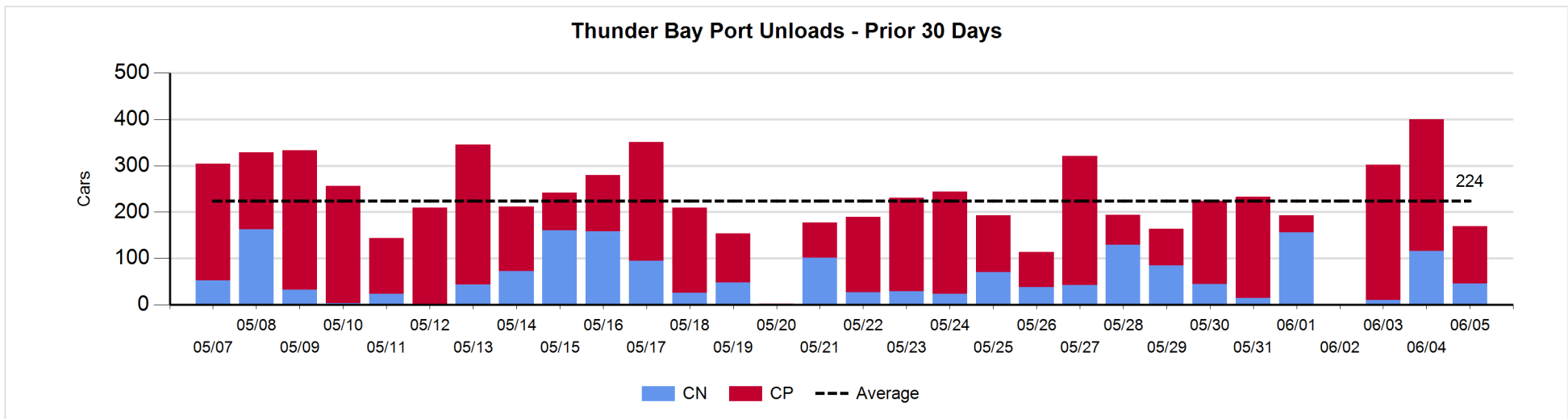
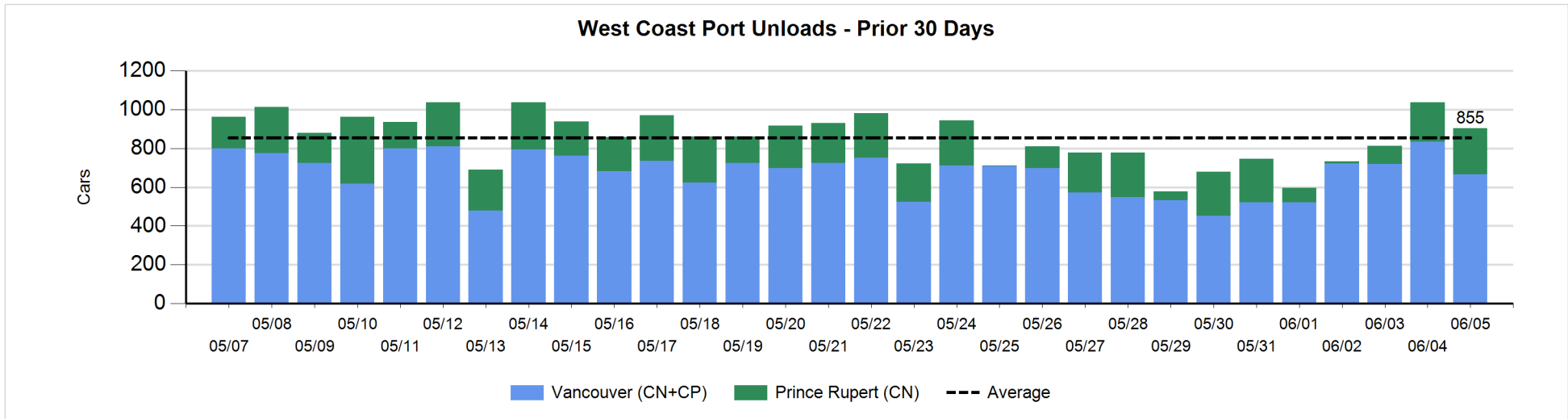
Change in Loads Not Moving 48 Hours or More - 6/5/2019

	E Canada	Prince Rupert	Thunder Bay	USA/MEX	Vancouver	Total
CN						
Origin	108	0			6	114
Enroute	-6	-26	0	-14	-6	-52
Destination	1	-3	-15	22	-21	-16
	103	-29	-15	8	-21	46
CP						
Origin	1		-3		-22	-24
Enroute	2		0	5	-16	-9
Destination	0		-56		-18	-74
	3		-59	5	-56	-107
US Rail / Short Line						
Origin						
Enroute				-2		-2
Destination	0			0	1	1
	0			-2	1	-1



Port Unloads - 6/5/2019

	Prince Rupert	Vancouver	West Coast Total	Thunder Bay	Total
CN	238	205	443	46	489
CP		461	461	123	584
	238	666	904	169	1,073



Port Terminal Status

Vancouver

Daily Activity for 6/5/2019

	Cars Arrived	Cars Received in Interchange	Cars Delivered in Interchange	Cars Placed for Unloading	Loads on Wheels at Destination As of 6/5/2019
CN	65	123	137	169	295
CP	268	135	128	476	711
SRY	1	7		18	26

Port Unloads

	06/05	06/04	Week To Date	Last Week
CN	205	377	830	1,083
CP	461	457	1,388	2,788
SRY	26	23	73	63

Age Profile of Loaded Cars Waiting Placement for Unloading

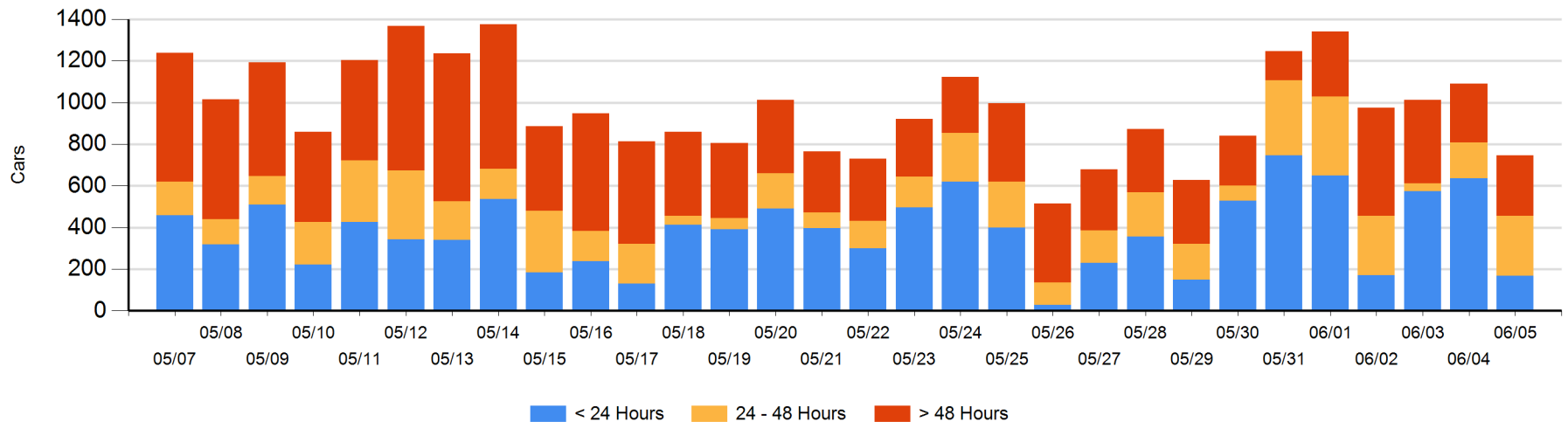
Today

	< 24 Hrs	24 - 48 Hrs	> 48-72 Hrs	> 72 Hrs	Total On Hand
CN	65	79	47	10	201
CP	104	208	69	165	546
SRY					0

Change in Last 24 Hours

	< 24 Hrs	24-48 Hrs	48 - 72 Hrs	> 72 Hrs
CN	-130	-1	44	3
CP	-338	118	34	-75
SRY				

Loaded Cars on Hand Vancouver Waiting for Placement - Last 30 Days All Railways



Port Terminal Status

Prince Rupert

Daily Activity for 6/5/2019

	Cars Arrived	Cars Received in Interchange	Cars Delivered in Interchange	Cars Placed for Unloading	Loads on Wheels at Destination As of 6/5/2019
CN		295		295	187

Port Unloads

	06/05	06/04	Week To Date	Last Week
CN	238	204	537	1,016

Age Profile of Loaded Cars Waiting Placement for Unloading

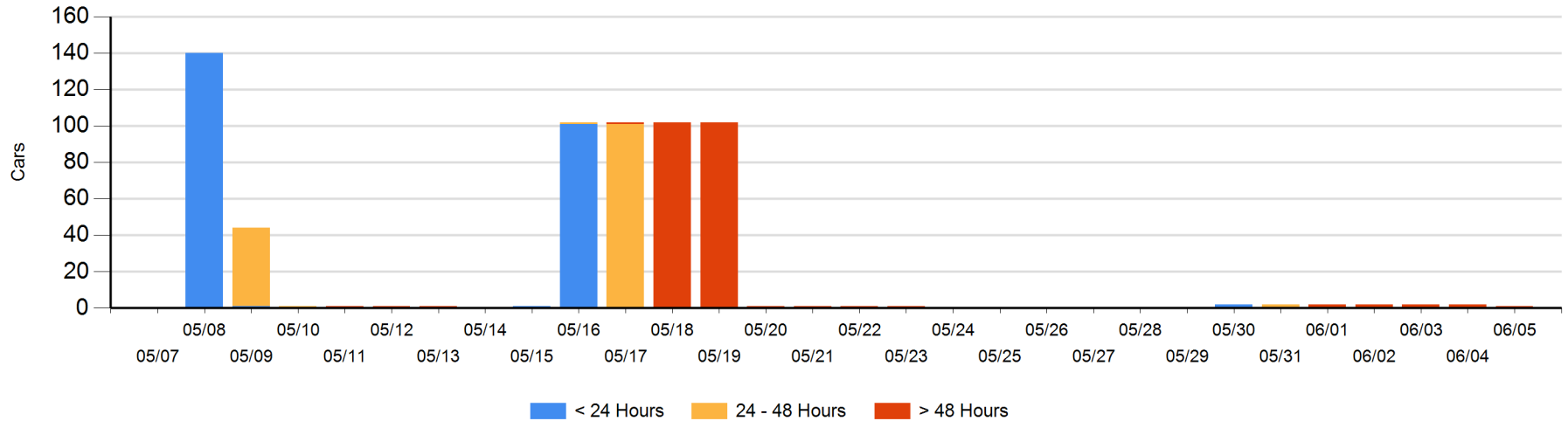
Today

	< 24 Hrs	24 - 48 Hrs	> 48-72 Hrs	> 72 Hrs	Total On Hand
CN				1	1

Change in Last 24 Hours

	< 24 Hrs	24-48 Hrs	48 - 72 Hrs	> 72 Hrs
CN				-1

Loaded Cars on Hand Prince Rupert Waiting for Placement - Last 30 Days All Railways



Port Terminal Status

Thunder Bay

Daily Activity for 6/5/2019

	Cars Arrived	Cars Received in Interchange	Cars Delivered in Interchange	Cars Placed for Unloading	Loads on Wheels at Destination As of 6/5/2019
CN				98	187
CP	224			246	298

Port Unloads

	06/05	06/04	Week To Date	Last Week
CN	46	116	172	473
CP	123	284	699	857

Age Profile of Loaded Cars Waiting Placement for Unloading

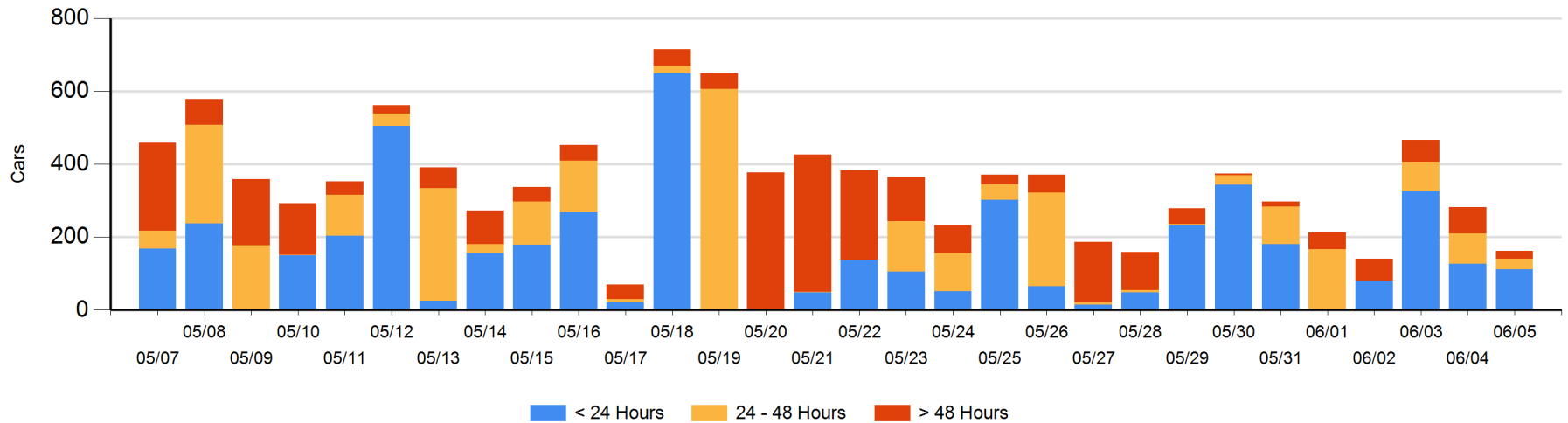
Today

	< 24 Hrs	24 - 48 Hrs	> 48-72 Hrs	> 72 Hrs	Total On Hand
CN					0
CP	112	28	17	5	162

Change in Last 24 Hours

	< 24 Hrs	24-48 Hrs	48 - 72 Hrs	> 72 Hrs
CN	-98			
CP	84	-56	3	-53

Loaded Cars on Hand Thunder Bay Waiting for Placement - Last 30 Days All Railways



Measurement Definitions

Loads on Wheels	<p>Count of loaded rail cars including all rail cars that have been released loaded at origin and have not been reported by the railway as unloaded at destination.</p> <p>Counts include all rail cars (hopper cars and boxcars) moving within a pipeline.</p>
Loads Not Moving	<p>Loaded rail cars for which the railways have not reported a movement event for 48 hours or more whether the rail car is at origin, enroute or at destination.</p>
Port Unloads	<p>Count of rail cars reported by railways as unloaded at the western port destinations of Vancouver, Prince Rupert and Thunder Bay.</p> <p>Unload counts include all rail cars (hopper cars and boxcars) unloaded by all receivers including major port terminals, transloaders and other receivers.</p>
Cars Arrived	<p>Count of rail cars reported as arrived at the destination railway terminal.</p>
Cars Received in Interchange	<p>Count of rail cars received in interchange by each railway within a destination railway terminal. Interchange activity is tracked for the Vancouver and Thunder Bay pipelines as applicable.</p>
Cars Delivered in Interchange	<p>Count of rail cars delivered in interchange by each railway within a destination railway terminal. Interchange activity is tracked for the Vancouver and Thunder Bay pipelines as applicable.</p>
Cars Placed for Unloading	<p>Count of rail cars reported by the railways as placed loaded at the receiver's facility for unloading.</p>
Loads on Wheels at Destination	<p>Count of rail cars that remain under load within the destination railway terminal including rail cars that have been reported as placed for unloading but not yet reported as unloaded.</p>
Waiting Placement for Unloading	<p>Count of rail cars that have been reported as arrived at the destination railway terminal but not reported as placed for unloading by the railway.</p> <p>For the Ports of Vancouver, Prince Rupert and Thunder Bay the count of rail cars waiting placement for unloading is categorized by age – i.e. the elapsed time from arrival at destination to the current report date.</p>