

SPEED READ

- Loads on wheels increased overnight, reflecting a rise in both CN and CP volumes. On a net basis, volumes increased due to higher volumes in the Vancouver, Thunder Bay and USA/MEX corridors offset by lower volumes in the Prince Rupert and E. Canada corridors.
- Network fluidity deteriorated overnight, led by a rise in idle car counts on CP by 67% (+269) offset by a decline in idle car counts on CN by 47% (-150). The total count of cars for 4+ days on both railways decreased for the third consecutive day, down 26% (-60) overnight - currently at 172 cars.
- Four days in Week 45 unloads now ahead of prior week's performance by 1,150 unloads, marking improved week over week performance across all three major ports - Vancouver, Thunder Bay and Prince Rupert.

=====

Loads on Wheels

- Loads on wheels increased 4% (+330) overnight, due to higher volumes on both CN and CP - combined total at 9,004 and 5% above the trailing 30-day average.
- On a net basis, the rise in loads on wheels reflects higher volumes in the Vancouver, Thunder Bay and USA/MEX corridors offset by lower volumes in the Prince Rupert and E. Canada corridors.
- CN volumes increased slightly by (+14) overnight, with higher traffic in the Vancouver and USA/MEX corridors offset by lower volumes in the Prince Rupert, E. Canada and Thunder Bay corridors. System wide CN loads on wheels now at 4,210 and 2% above the trailing 30-day average.
- CP volumes gained 8% (+334) overnight, driven by a rise in volumes across all corridors other than USA/MEX. CP system wide loads on wheels currently at 4,669 and 9% above the trailing 30-day average.
- Vancouver currently at 5,340, increased 8% (+375) overnight, now 5% above the trailing 30-day average.
- The Prince Rupert pipeline currently at 1,152, decreased significantly by 14% (-184) overnight, and 8% below the trailing 30-day average.
- Thunder Bay volumes increased significantly by 17% (+188) overnight - currently at 1,295 and 4% above the trailing 30-day average, with 80% of traffic moving on CP.

Hopper Car Rationing

- CN and CP rationed no hopper cars in week 44 and thus far there are no indications of rationing in week 45.

Loads Not Moving

- **The count of cars not moving for 48+ hours gained 16% (+119) overnight, marking higher counts on CP offset by reduced counts on CN. Idle car counts currently at 843 and 35% below the trailing 30-day average.**
- CN
 - **The count of idle cars for 48+ hours decreased significantly by 47% (-150) overnight - currently at 172 cars.**
 - The number of cars idle for 4+ days decreased 39% (-23) overnight - now at 36 cars, the lowest seen in the last 30 days.
 - The count of cars not moving for 7+ days remained unchanged (0) overnight - currently at 31 cars, the lowest seen in the last 30 days.
 - Vancouver represents 24% of all idle cars.
 - In total 25% of all idle cars are dwelling at origin locations.
- CP
 - **CP idle car counts for 48+ hours increased significantly by 67% (+269) overnight - currently at 670 cars.**
 - The number of cars idle for 4+ days decreased for the third consecutive day, down 21% (-37) overnight - currently at 136 cars.
 - The number of cars idle for 7+ days declined significantly by 57% (-48) overnight - currently at 36 cars.

- Vancouver accounts for 48% of all idle cars.
- In total 43% of all idle cars are dwelling at origin locations.

Port Performance

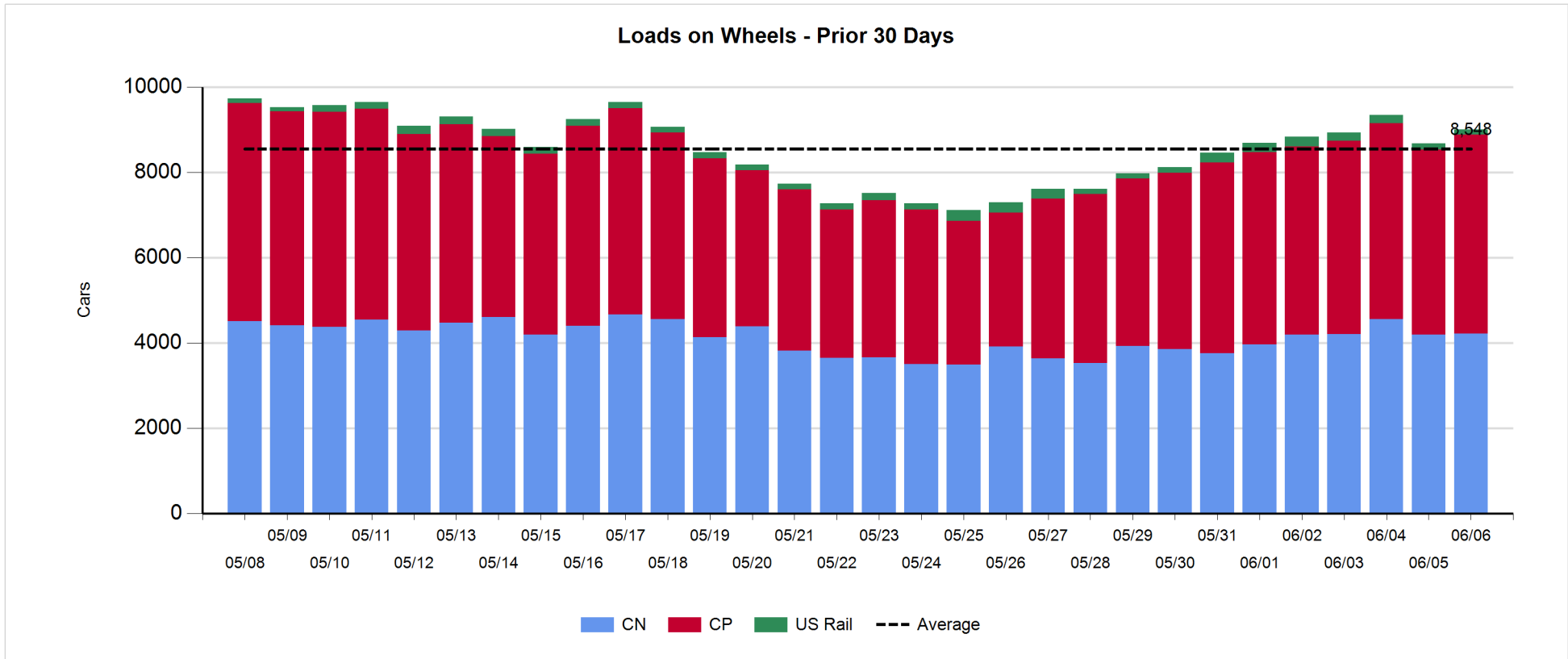
- CN and CP reported a total of 1,193 cars unloaded at the three major ports, now 11% above the trailing 30-day average. Four days in Week 45 unloads now ahead of last week's pace by 1,150 unloads, marking higher unloads across all three major ports - Vancouver, Thunder Bay and Prince Rupert.
- Vancouver
 - 652 unloads reported by CN and CP at the Port of Vancouver; CN - 167 and CP - 485. Four days in Week 45 unloads are tracking ahead of last week's performance by 800 unloads.
 - There are 1,450 cars on site at Vancouver with more than 1,050 cars arriving at the port in the last 24 hours.
 - CN and CP have 1,650 cars in British Columbia en route to Vancouver, with 1,100 cars at Kamloops and west, and 67% of traffic moving on CP.
- Prince Rupert
 - Prince Rupert reported 243 unloads, now ahead of last week's unloads after four days by more than 50 unloads.
 - Loads on wheels now above 1,000 cars - now at 1,152 cars.
 - There are more than 300 cars west of Jasper en route to Prince Rupert.
 - There are nearly 200 cars on site at Prince Rupert with 300 cars arriving at the port in the last 24 hours.
- Thunder Bay
 - 298 unloads were reported at Thunder Bay yesterday. Four days in Week 45 unloads are tracking ahead of last week's pace by more than 250 unloads.
 - There are 350 cars on site at Thunder Bay with more than 150 cars arriving at the port in the prior 24 hours.
 - There are about 300 cars en route to Thunder Bay from Winnipeg and east.

Daily Loads on Wheels - 6/6/2019

	E Canada	Prince Rupert	Thunder Bay	USA/MEX	Vancouver	Total
CN	413	1,152	259	282	2,104	4,210
CP	188		1,036	225	3,220	4,669
Short Line	9				16	25
US Rail				100		100
	610	1,152	1,295	607	5,340	9,004

Change in Loads on Wheels - Prior 24 Hours

	E Canada	Prince Rupert	Thunder Bay	USA/MEX	Vancouver	Total
CN	-82	-184	-32	58	254	14
CP	1		220	-18	131	334
Short Line	0				-10	-10
US Rail				-8		-8
	-81	-184	188	32	375	330

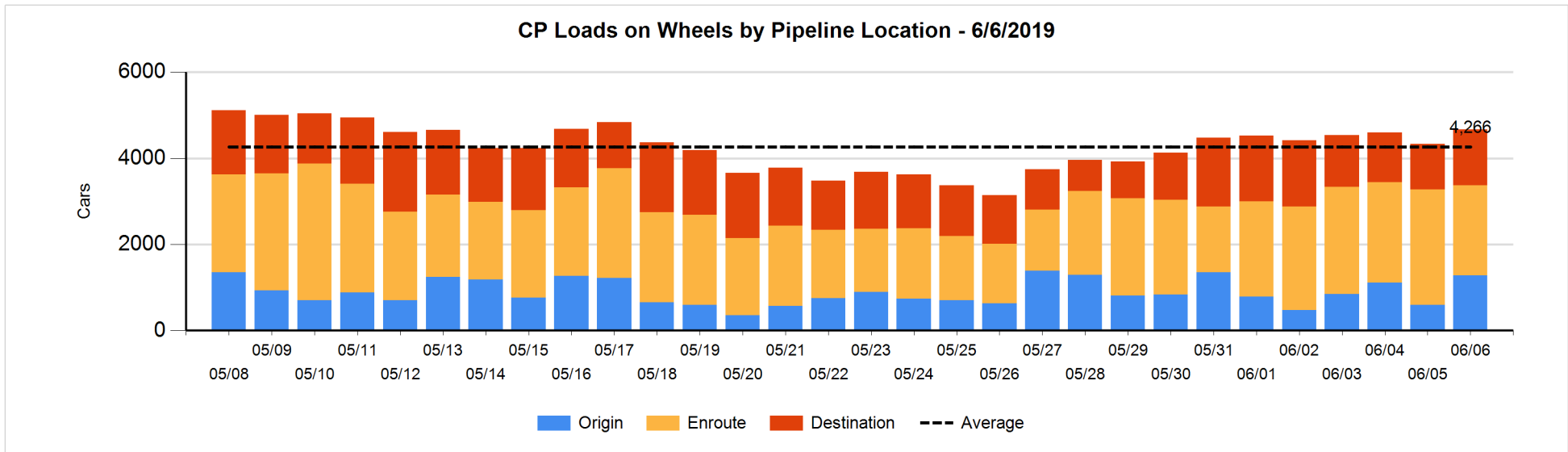
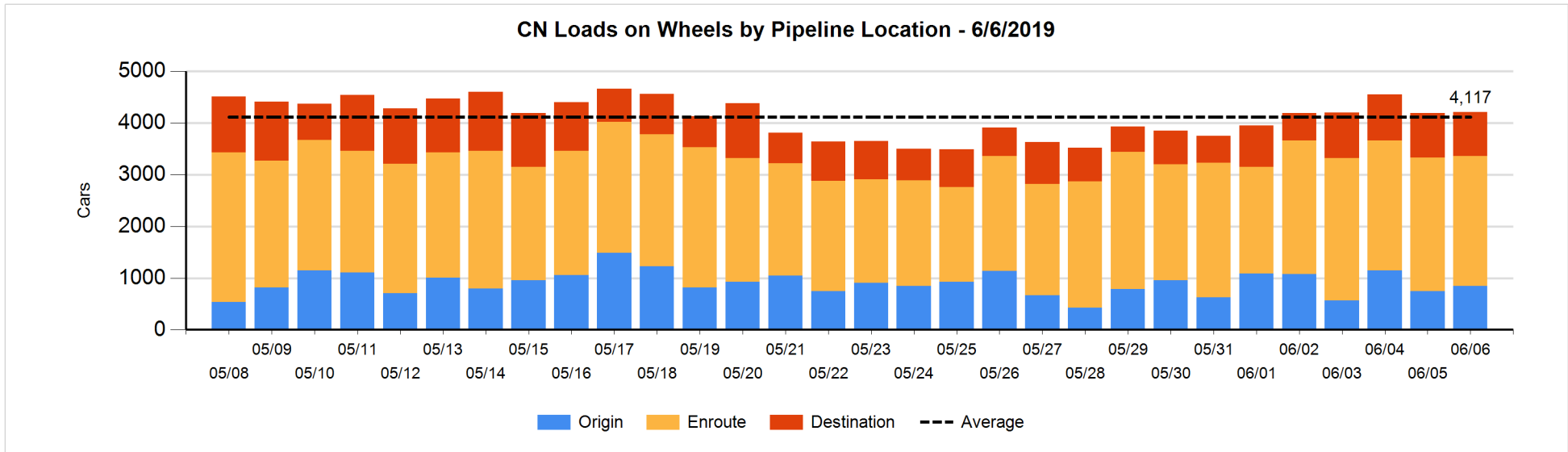


Daily Loads on Wheels By Pipeline Location - 6/6/2019

	E Canada	Prince Rupert	Thunder Bay	USA/MEX	Vancouver	Total
CN						
Origin	63	68	100	90	524	845
Enroute	243	899	104	155	1,115	2,516
Destination	107	185	55	37	465	849
	413	1,152	259	282	2,104	4,210
CP						
Origin	12		547	197	520	1,276
Enroute	142		188	22	1,737	2,089
Destination	34		301	6	964	1,305
	188		1,036	225	3,221	4,670
US Rail / Short Line						
Origin						
Enroute				70		70
Destination	9			30	16	55
	9			100	16	125

Change in Daily Loads on Wheels By Pipeline Location - Prior 24 Hours

	E Canada	Prince Rupert	Thunder Bay	USA/MEX	Vancouver	Total
CN						
Origin	-97	-241	100	59	277	98
Enroute	60	59	0	7	-193	-67
Destination	-45	-2	-132	-8	170	-17
	-82	-184	-32	58	254	14
CP						
Origin	1		386	0	290	677
Enroute	1		-169	-6	-412	-586
Destination	-1		3	-12	253	243
	1		220	-18	131	334
US Rail / Short Line						
Origin						
Enroute				-16		-16
Destination	0			8	-10	-2
	0			-8	-10	-18

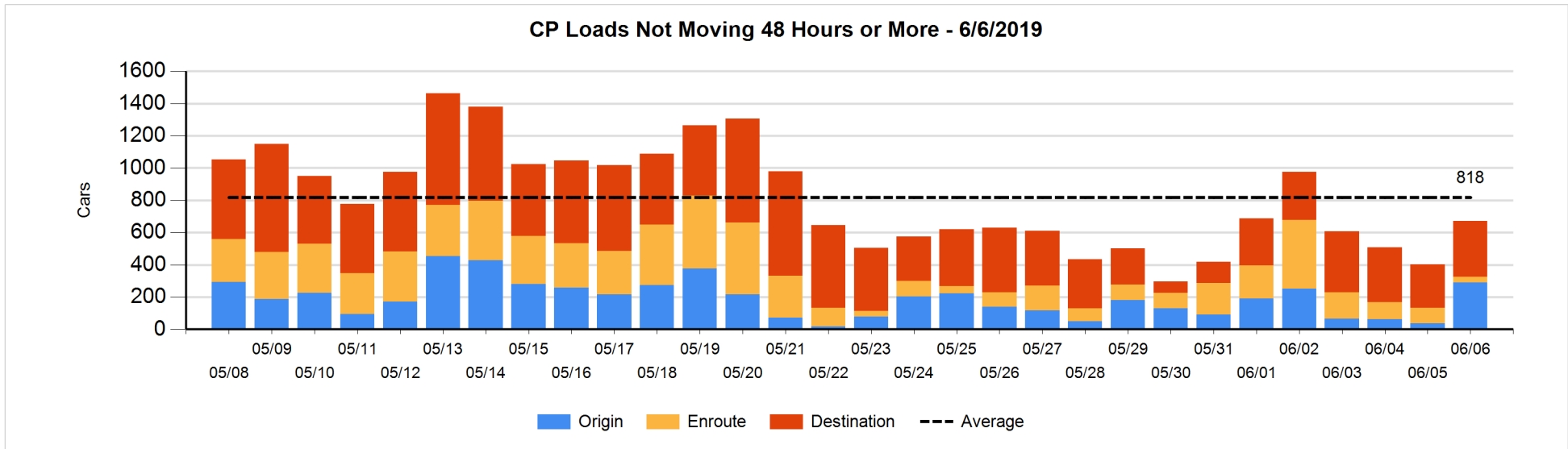
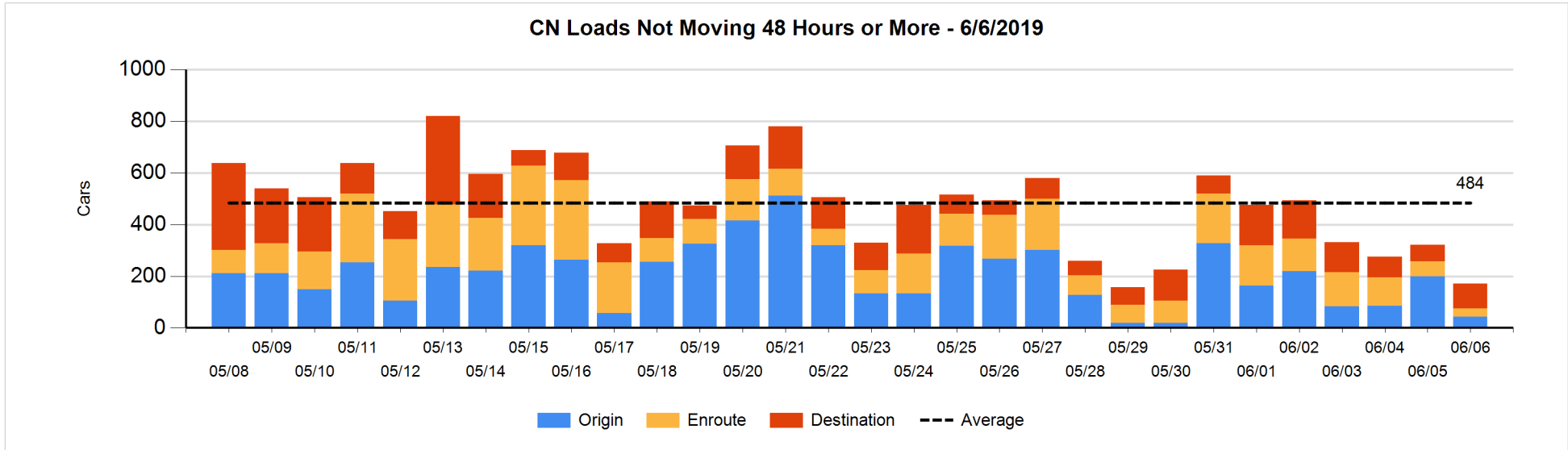


Loads Not Moving 48 Hours or More - 6/6/2019

	E Canada	Prince Rupert	Thunder Bay	USA/MEX	Vancouver	Total
CN						
Origin	21	7			15	43
Enroute	8	3	1	15	4	31
Destination	2		46	28	22	98
	31	10	47	43	41	172
CP						
Origin	9		161	97	24	291
Enroute	2		1	17	13	33
Destination	34		28		285	347
	45		190	114	322	671
US Rail / Short Line						
Origin						
Enroute				28		28
Destination	7			19	12	38
	7			47	12	66

Change in Loads Not Moving 48 Hours or More - 6/6/2019

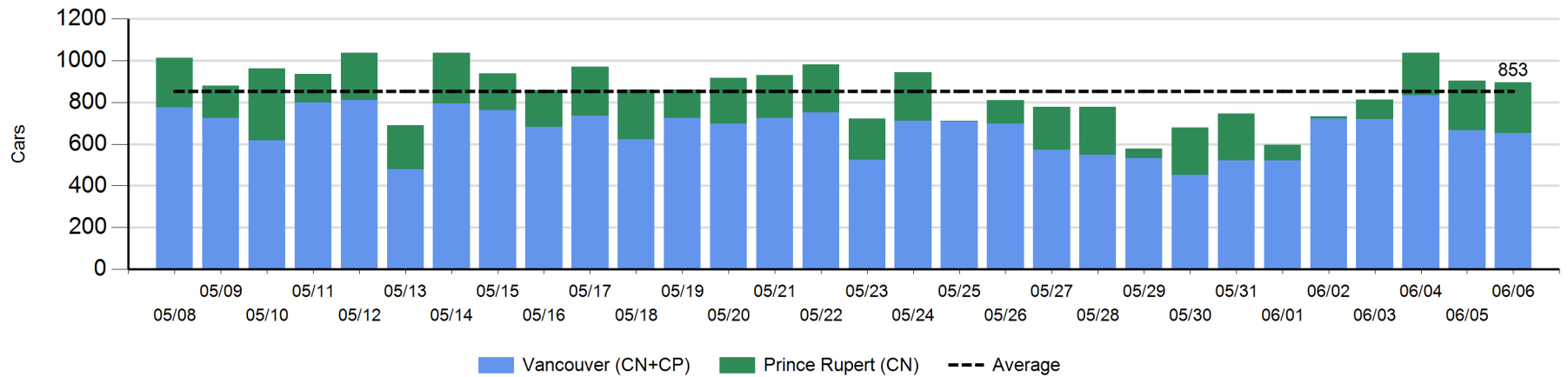
	E Canada	Prince Rupert	Thunder Bay	USA/MEX	Vancouver	Total
CN						
Origin	-87	-78			9	-156
Enroute	0	-24	0	1	-4	-27
Destination	0	-1	10	3	21	33
	-87	-103	10	4	26	-150
CP						
Origin	6		161	97	-11	253
Enroute	0		-1	-5	-57	-63
Destination	0		6		73	79
	6		166	92	5	269
US Rail / Short Line						
Origin						
Enroute				6		6
Destination	0			0	6	6
	0			6	6	12



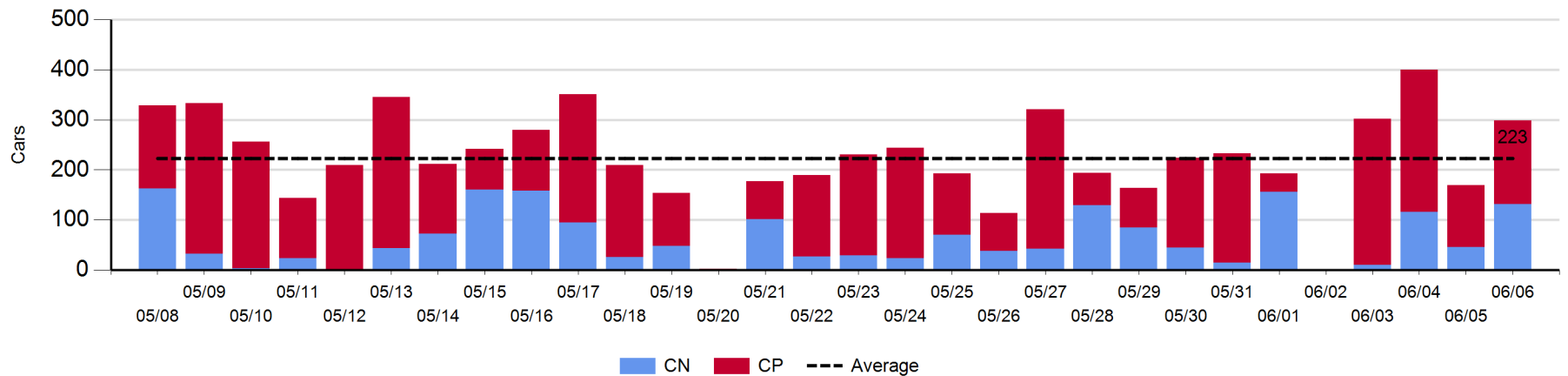
Port Unloads - 6/6/2019

	Prince Rupert	Vancouver	West Coast Total	Thunder Bay	Total
CN	243	167	410	132	542
CP		485	485	166	651
	243	652	895	298	1,193

West Coast Port Unloads - Prior 30 Days



Thunder Bay Port Unloads - Prior 30 Days



Port Terminal Status

Vancouver

Daily Activity for 6/6/2019

	Cars Arrived	Cars Received in Interchange	Cars Delivered in Interchange	Cars Placed for Unloading	Loads on Wheels at Destination As of 6/6/2019
CN	281	111	179	167	465
CP	793	179	113	537	964
SRY		2		9	16

Port Unloads

	06/06	06/05	Week To Date	Last Week
CN	167	205	997	1,083
CP	485	461	1,873	2,788
SRY	11	26	84	63

Age Profile of Loaded Cars Waiting Placement for Unloading

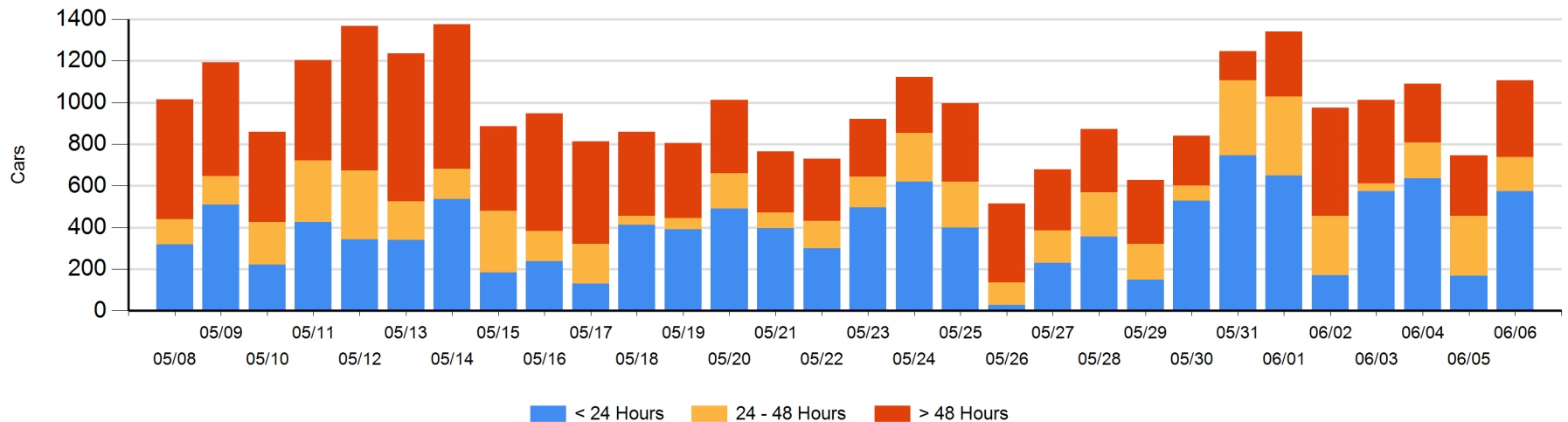
Today

	< 24 Hrs	24 - 48 Hrs	> 48-72 Hrs	> 72 Hrs	Total On Hand
CN	281			29	310
CP	294	163	182	157	796
SRY					0

Change in Last 24 Hours

	< 24 Hrs	24-48 Hrs	48 - 72 Hrs	> 72 Hrs
CN	216	-79	-47	19
CP	190	-45	113	-8
SRY				

Loaded Cars on Hand Vancouver Waiting for Placement - Last 30 Days All Railways



Port Terminal Status

Prince Rupert

Daily Activity for 6/6/2019

	Cars Arrived	Cars Received in Interchange	Cars Delivered in Interchange	Cars Placed for Unloading	Loads on Wheels at Destination As of 6/6/2019
CN	291			241	185

Port Unloads

	06/06	06/05	Week To Date	Last Week
CN	243	238	780	1,016

Age Profile of Loaded Cars Waiting Placement for Unloading

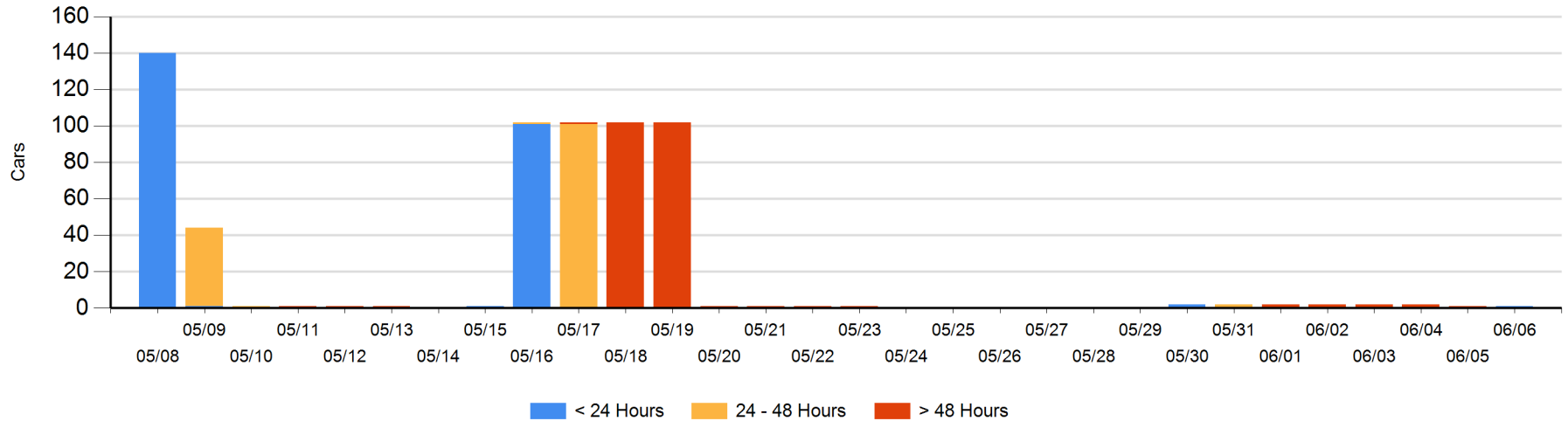
Today

	< 24 Hrs	24 - 48 Hrs	> 48-72 Hrs	> 72 Hrs	Total On Hand
CN	1				1

Change in Last 24 Hours

	< 24 Hrs	24-48 Hrs	48 - 72 Hrs	> 72 Hrs
CN	1			-1

Loaded Cars on Hand Prince Rupert Waiting for Placement - Last 30 Days All Railways



Port Terminal Status

Thunder Bay

Daily Activity for 6/6/2019

	Cars Arrived	Cars Received in Interchange	Cars Delivered in Interchange	Cars Placed for Unloading	Loads on Wheels at Destination As of 6/6/2019
CN					55
CP	169			47	301

Port Unloads

	06/06	06/05	Week To Date	Last Week
CN	132	46	304	473
CP	166	123	865	857

Age Profile of Loaded Cars Waiting Placement for Unloading

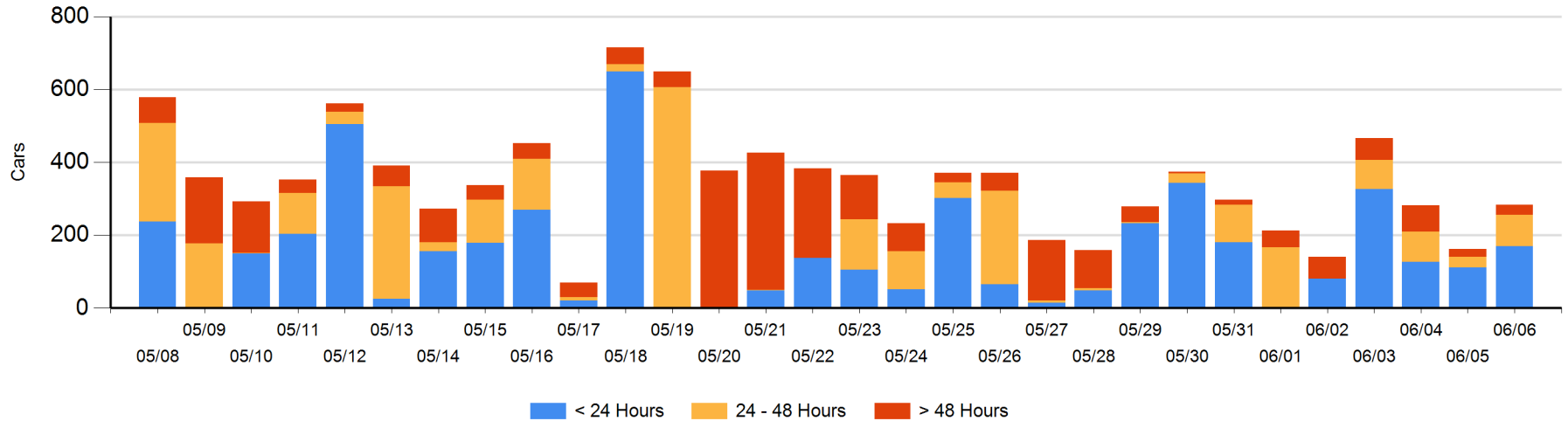
Today

	< 24 Hrs	24 - 48 Hrs	> 48-72 Hrs	> 72 Hrs	Total On Hand
CN					0
CP	169	87	28		284

Change in Last 24 Hours

	< 24 Hrs	24-48 Hrs	48 - 72 Hrs	> 72 Hrs
CN				
CP	57	59	11	-5

Loaded Cars on Hand Thunder Bay Waiting for Placement - Last 30 Days All Railways



Measurement Definitions

Loads on Wheels	<p>Count of loaded rail cars including all rail cars that have been released loaded at origin and have not been reported by the railway as unloaded at destination.</p> <p>Counts include all rail cars (hopper cars and boxcars) moving within a pipeline.</p>
Loads Not Moving	<p>Loaded rail cars for which the railways have not reported a movement event for 48 hours or more whether the rail car is at origin, enroute or at destination.</p>
Port Unloads	<p>Count of rail cars reported by railways as unloaded at the western port destinations of Vancouver, Prince Rupert and Thunder Bay.</p> <p>Unload counts include all rail cars (hopper cars and boxcars) unloaded by all receivers including major port terminals, transloaders and other receivers.</p>
Cars Arrived	<p>Count of rail cars reported as arrived at the destination railway terminal.</p>
Cars Received in Interchange	<p>Count of rail cars received in interchange by each railway within a destination railway terminal. Interchange activity is tracked for the Vancouver and Thunder Bay pipelines as applicable.</p>
Cars Delivered in Interchange	<p>Count of rail cars delivered in interchange by each railway within a destination railway terminal. Interchange activity is tracked for the Vancouver and Thunder Bay pipelines as applicable.</p>
Cars Placed for Unloading	<p>Count of rail cars reported by the railways as placed loaded at the receiver's facility for unloading.</p>
Loads on Wheels at Destination	<p>Count of rail cars that remain under load within the destination railway terminal including rail cars that have been reported as placed for unloading but not yet reported as unloaded.</p>
Waiting Placement for Unloading	<p>Count of rail cars that have been reported as arrived at the destination railway terminal but not reported as placed for unloading by the railway.</p> <p>For the Ports of Vancouver, Prince Rupert and Thunder Bay the count of rail cars waiting placement for unloading is categorized by age – i.e. the elapsed time from arrival at destination to the current report date.</p>