

**SPEED READ**

- Loads on wheels declined overnight, marking lower CP volumes offset by an increase in CN volumes. On a net basis, volumes decreased due to lower traffic in the Vancouver, Thunder Bay and USA/MEX corridors offset by higher traffic in the Prince Rupert and E. Canada corridors.
- Network fluidity deteriorated overnight, led by an increase in idle car counts on CP by 88% (+509) offset by a decline in idle car counts on CN by 13% (-74). The total count of cars for 4+ days on both railways decreased 12% (-32) overnight - now at 238 cars.
- Week 45 unloads finished ahead of prior week's performance by more than 2,000 unloads, reflecting improved week over week performance across all three major ports - Vancouver, Thunder Bay and Prince Rupert.

=====

**Loads on Wheels**

- Loads on wheels declined 4% (-335) overnight, due to lower traffic on CP offset by higher traffic on CN - combined total at 8,665 and 2% above the trailing 30-day average.
- On a net basis, the decline in loads on wheels indicates lower traffic in the Vancouver, Thunder Bay and USA/MEX corridors offset by higher traffic in the Prince Rupert and E. Canada corridors.
- CN volumes increased 7% (+304) overnight, with higher traffic in the Prince Rupert, Vancouver and E. Canada corridors offset by lower traffic in the USA/MEX and Thunder Bay corridors. System wide CN loads on wheels presently at 4,529 and 10% above the trailing 30-day average.
- CP volumes decreased significantly by 15% (-681) overnight, driven by a decline in traffic across all corridors - Vancouver, Thunder Bay, USA/MEX and E. Canada. CP system wide loads on wheels now at 3,976 and 6% below the trailing 30-day average.
- Vancouver now at 4,943, declined 8% (-425) overnight, now 2% below the trailing 30-day average.
- The Prince Rupert pipeline presently at 1,078, increased significantly by 13% (+122) overnight, and 10% below the trailing 30-day average.
- Thunder Bay volumes fell 5% (-83) overnight - now at 1,433 and 15% above the trailing 30-day average, with 71% of traffic moving on CP.

**Hopper Car Rationing**

- CN rationed no hopper cars in week 44.

**Loads Not Moving**

- **The count of cars not moving for 48+ hours gained 37% (+435) overnight and have now increased for the fourth consecutive day, reflecting higher counts on CP offset by reduced counts on CN. Idle car counts currently at 1,605 and 27% above the trailing 30-day average.**
- CN
  - **The count of idle cars for 48+ hours decreased 13% (-74) overnight - currently at 517 cars.**
  - The number of cars idle for 4+ days gained for the third consecutive day, up 75% (+58) overnight - currently at 135 cars.
  - The count of cars not moving for 7+ days declined 23% (-6) overnight - now at 20 cars, the lowest seen in the last 30 days.
  - Vancouver represents 60% of all idle cars.
  - In total 67% of all idle cars are dwelling at origin locations.
- CP
  - **CP idle car counts for 48+ hours gained significantly by 88% (+509) overnight - currently at 1,088 cars.**
  - The number of cars idle for 4+ days fell significantly by 47% (-90) overnight - presently at 103 cars.
  - The number of cars idle for 7+ days decreased 6% (-3) overnight - now at 47 cars.
  - Vancouver accounts for 83% of all idle cars.

- In total 30% of all idle cars are dwelling at origin locations.

### **Port Performance**

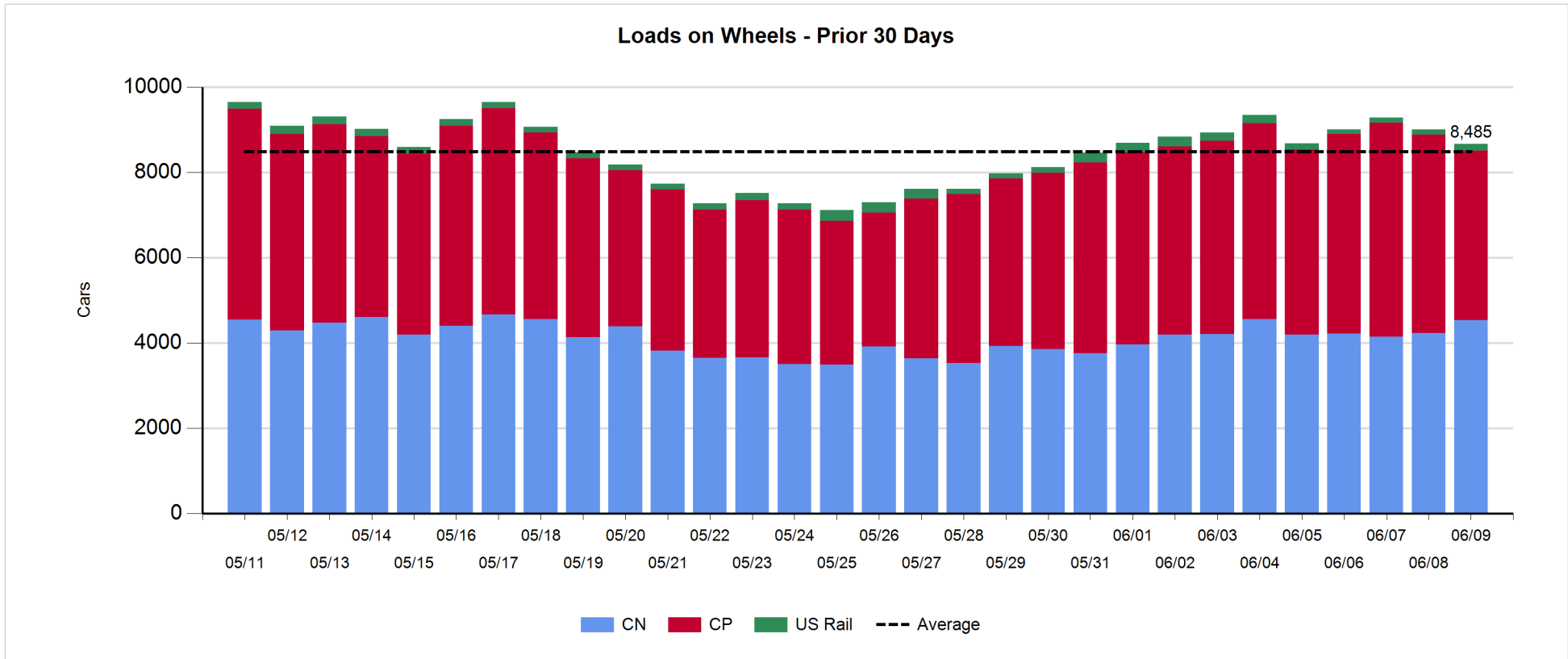
- CN and CP reported a total of 1,048 cars unloaded at the three major ports, now 2% below the trailing 30-day average. Week 45 unloads finished ahead of last week's pace by more than 2,000 unloads, reflecting higher unloads across all three major ports - Vancouver, Thunder Bay and Prince Rupert.
- Vancouver
  - 802 unloads reported by CN and CP at the Port of Vancouver; CN - 340 and CP - 462. Week 45 unloads concluded ahead of last week's performance by 1,500 unloads.
  - There are more than 1,300 cars on site at Vancouver with 550 cars arriving at the port in the last 24 hours.
  - CN and CP have more than 1,000 cars in British Columbia en route to Vancouver, with 550 cars at Kamloops and west, and 79% of traffic moving on CP.
- Prince Rupert
  - Prince Rupert reported 163 unloads, concluded ahead of last week's unloads by more than 300 unloads.
  - Loads on wheels now above 1,000 cars - now at 1,078 cars.
  - There are less than 450 cars west of Jasper en route to Prince Rupert.
  - There are about 100 cars on site at Prince Rupert with more than 150 cars arriving at the port in the last 24 hours.
- Thunder Bay
  - 83 unloads were reported at Thunder Bay yesterday. Week 45 unloads concluded ahead of last week's pace by 200 unloads.
  - There are more than 650 cars on site at Thunder Bay with more than 250 cars arriving at the port in the prior 24 hours.
  - There are around 400 cars en route to Thunder Bay from Winnipeg and east.

**Daily Loads on Wheels - 6/9/2019**

	E Canada	Prince Rupert	Thunder Bay	USA/MEX	Vancouver	Total
CN	530	1,078	420	225	2,276	4,529
CP	115		1,013	201	2,647	3,976
Short Line	10				20	30
US Rail				130		130
	655	1,078	1,433	556	4,943	8,665

**Change in Loads on Wheels - Prior 24 Hours**

	E Canada	Prince Rupert	Thunder Bay	USA/MEX	Vancouver	Total
CN	113	122	-2	-43	114	304
CP	-18		-81	-40	-542	-681
Short Line	0				3	3
US Rail				39		39
	95	122	-83	-44	-425	-335

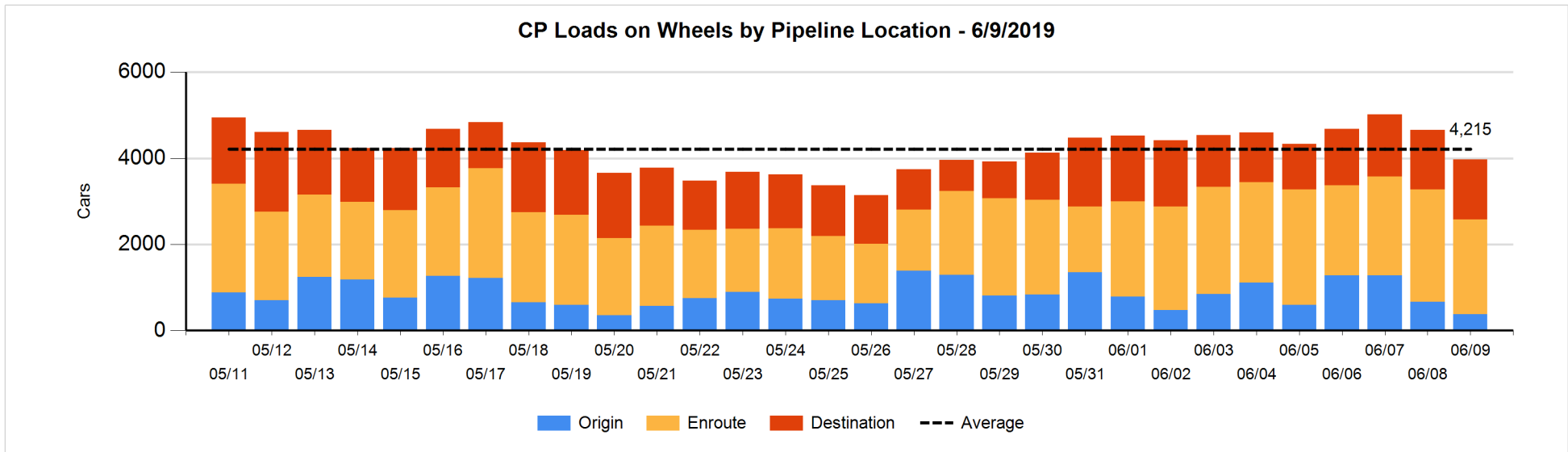
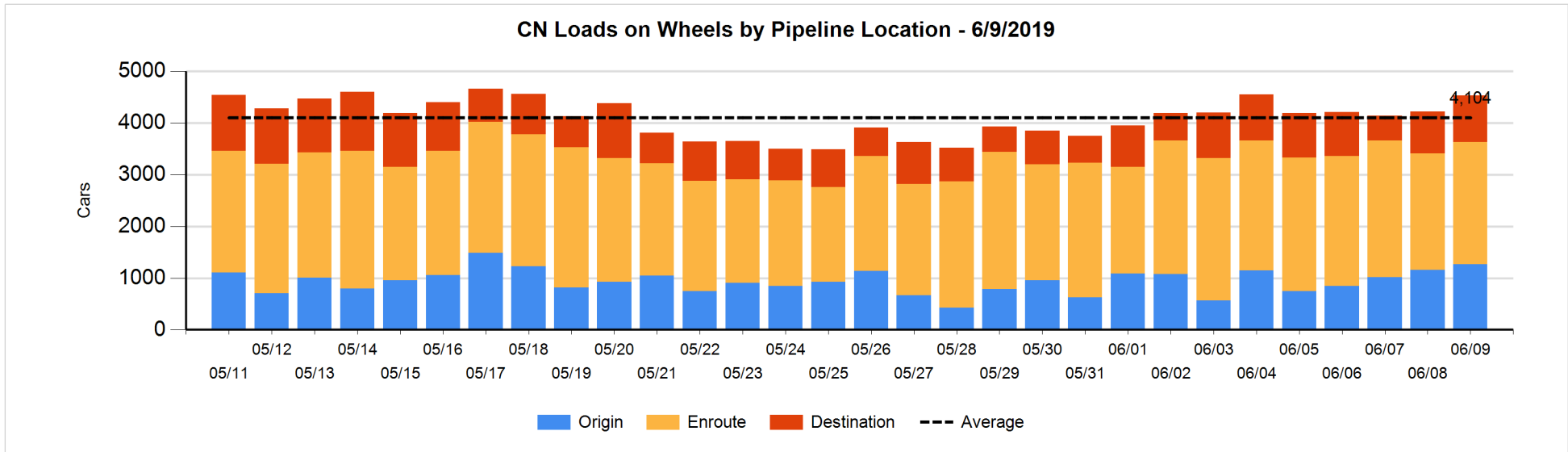


**Daily Loads on Wheels By Pipeline Location - 6/9/2019**

	E Canada	Prince Rupert	Thunder Bay	USA/MEX	Vancouver	Total
CN						
Origin	104	403			762	1,269
Enroute	250	587	202	197	1,129	2,365
Destination	176	88	218	28	385	895
	530	1,078	420	225	2,276	4,529
CP						
Origin			27	10	342	379
Enroute	75		539	185	1,397	2,196
Destination	40		447	6	909	1,402
	115		1,013	201	2,648	3,977
US Rail / Short Line						
Origin						
Enroute				62		62
Destination	10			68	20	98
	10			130	20	160

**Change in Daily Loads on Wheels By Pipeline Location - Prior 24 Hours**

	E Canada	Prince Rupert	Thunder Bay	USA/MEX	Vancouver	Total
CN						
Origin	104	241	-185	-69	20	111
Enroute	-12	-125	84	26	137	110
Destination	21	6	99	0	-43	83
	113	122	-2	-43	114	304
CP						
Origin	-5		-100	0	-187	-292
Enroute	-34		-75	-40	-264	-413
Destination	21		94	0	-91	24
	-18		-81	-40	-542	-681
US Rail / Short Line						
Origin						
Enroute				6		6
Destination	0			33	3	36
	0			39	3	42

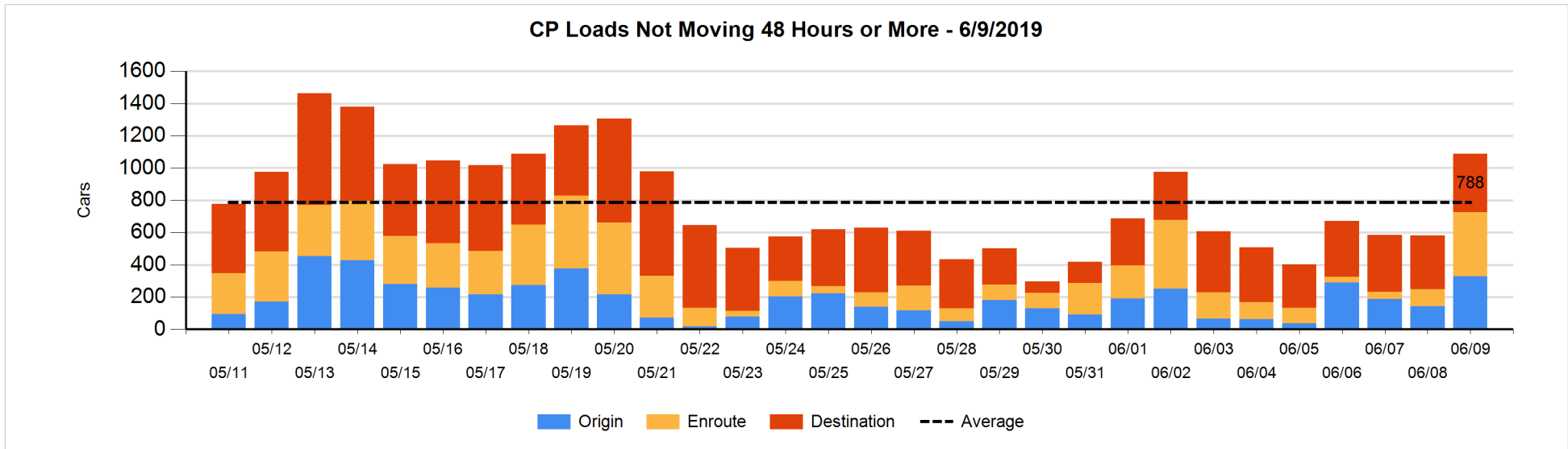
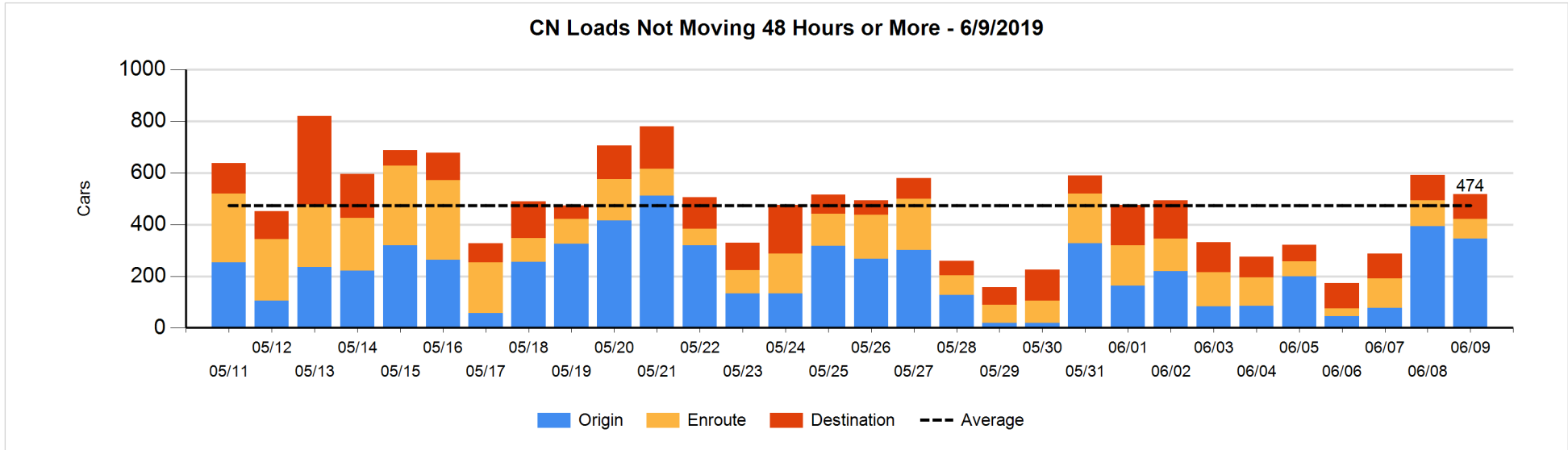


**Loads Not Moving 48 Hours or More - 6/9/2019**

	E Canada	Prince Rupert	Thunder Bay	USA/MEX	Vancouver	Total
<b>CN</b>						
Origin		68			278	346
Enroute	6	4		39	26	75
Destination	47		15	27	7	96
	53	72	15	66	311	517
<b>CP</b>						
Origin			27	10	291	328
Enroute	8		9	21	361	399
Destination	1		102	6	253	362
	9		138	37	905	1089
<b>US Rail / Short Line</b>						
Origin						
Enroute				30		30
Destination	10			29	13	52
	10			59	13	82

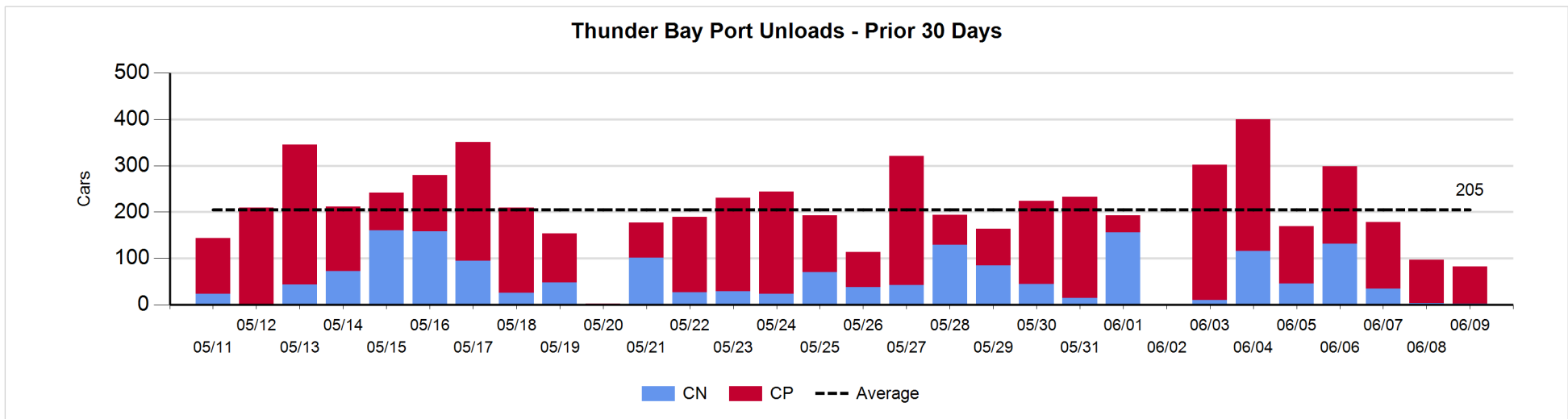
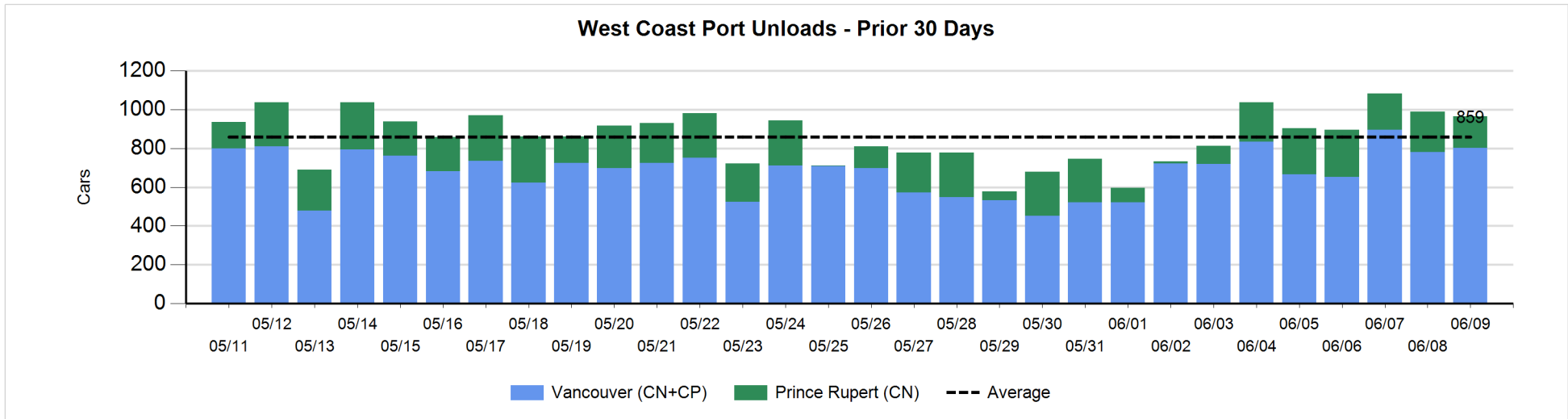
**Change in Loads Not Moving 48 Hours or More - 6/9/2019**

	E Canada	Prince Rupert	Thunder Bay	USA/MEX	Vancouver	Total
<b>CN</b>						
Origin		0		-69	22	-47
Enroute	-3	-1	-1	-5	-15	-25
Destination	8		-1	2	-11	-2
	5	-1	-2	-72	-4	-74
<b>CP</b>						
Origin	-3		-85	10	263	185
Enroute	6		2	4	281	293
Destination	1		42	0	-12	31
	4		-41	14	532	509
<b>US Rail / Short Line</b>						
Origin						
Enroute				-2		-2
Destination	1			1	1	3
	1			-1	1	1



**Port Unloads - 6/9/2019**

	Prince Rupert	Vancouver	West Coast Total	Thunder Bay	Total
CN	163	340	503	2	505
CP		462	462	81	543
	163	802	965	83	1,048





**Port Terminal Status**

**Vancouver**

Daily Activity for 6/9/2019

	Cars Arrived	Cars Received in Interchange	Cars Delivered in Interchange	Cars Placed for Unloading	Loads on Wheels at Destination As of 6/9/2019
CN	3	234	100	329	385
CP	550	100	236	405	909
SRY		2		1	20

**Port Unloads**

	06/09	06/08	Week To Date	Last Week
CN	340	349	2,064	1,083
CP	462	432	3,286	2,788
SRY		1	93	63

**Age Profile of Loaded Cars Waiting Placement for Unloading**

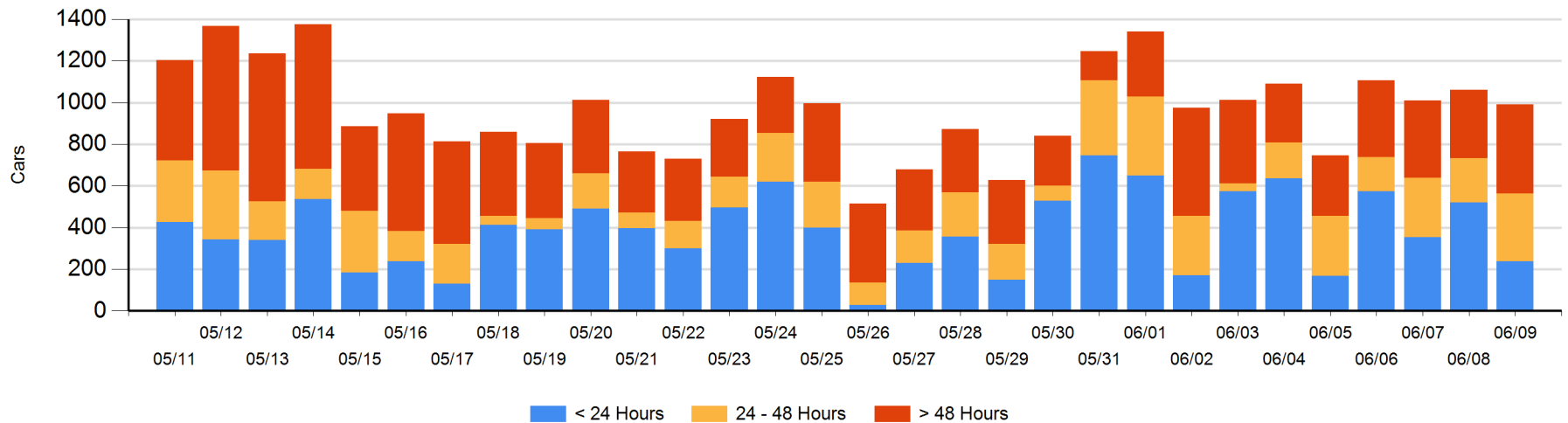
**Today**

	< 24 Hrs	24 - 48 Hrs	> 48-72 Hrs	> 72 Hrs	Total On Hand
CN	3	202	41	23	269
CP	234	125	165	198	722
SRY					0

**Change in Last 24 Hours**

	< 24 Hrs	24-48 Hrs	48 - 72 Hrs	> 72 Hrs
CN	-196	156	18	10
CP	-87	-42	-53	123
SRY				

**Loaded Cars on Hand Vancouver Waiting for Placement - Last 30 Days All Railways**



**Port Terminal Status**

**Prince Rupert**

Daily Activity for 6/9/2019

	Cars Arrived	Cars Received in Interchange	Cars Delivered in Interchange	Cars Placed for Unloading	Loads on Wheels at Destination As of 6/9/2019
CN	169			169	88

**Port Unloads**

	06/09	06/08	Week To Date	Last Week
CN	163	208	1,337	1,016

**Age Profile of Loaded Cars Waiting Placement for Unloading**

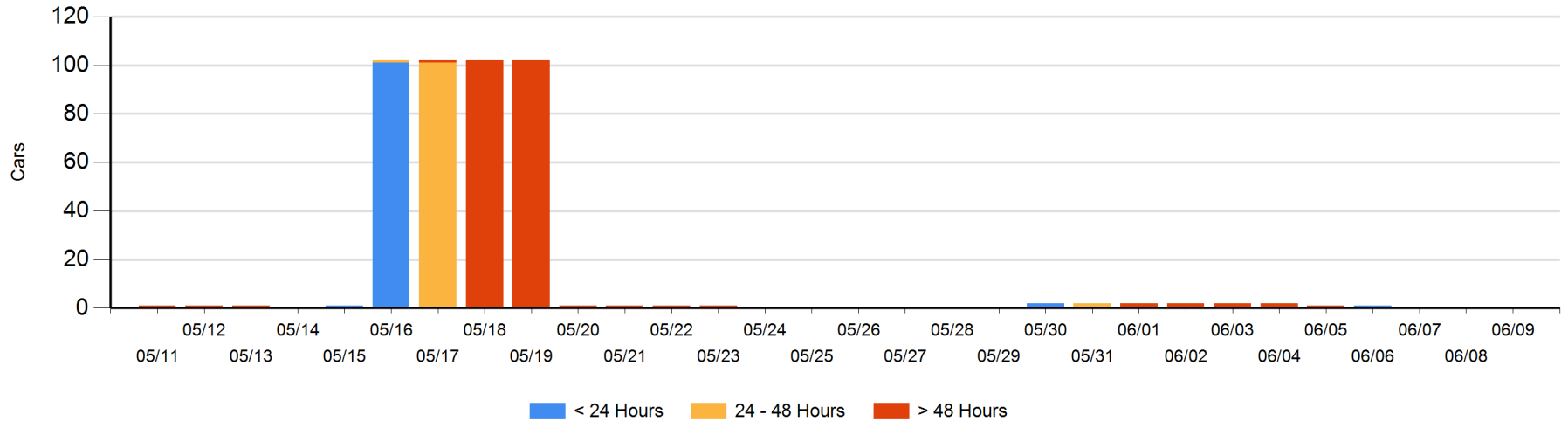
**Today**

	< 24 Hrs	24 - 48 Hrs	> 48-72 Hrs	> 72 Hrs	Total On Hand
CN					0

**Change in Last 24 Hours**

	< 24 Hrs	24-48 Hrs	48 - 72 Hrs	> 72 Hrs
CN				

Loaded Cars on Hand Prince Rupert Waiting for Placement - Last 30 Days All Railways



**Port Terminal Status**

**Thunder Bay**

Daily Activity for 6/9/2019

	Cars Arrived	Cars Received in Interchange	Cars Delivered in Interchange	Cars Placed for Unloading	Loads on Wheels at Destination As of 6/9/2019
CN	100			203	218
CP	175			137	447

**Port Unloads**

	06/09	06/08	Week To Date	Last Week
CN	2	4	345	473
CP	81	93	1,182	857

**Age Profile of Loaded Cars Waiting Placement for Unloading**

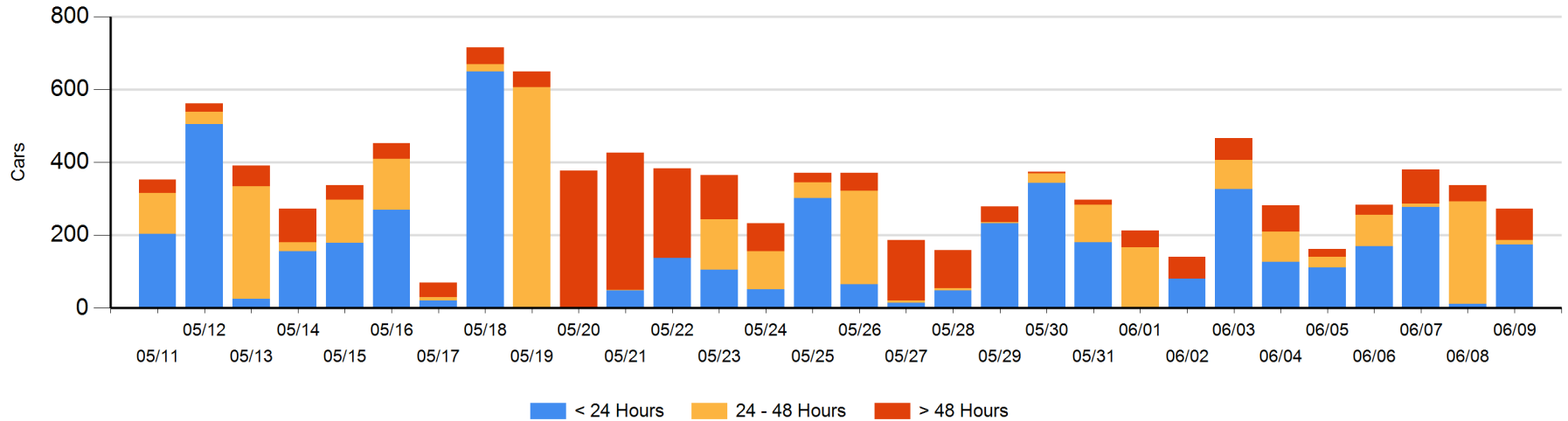
**Today**

	< 24 Hrs	24 - 48 Hrs	> 48-72 Hrs	> 72 Hrs	Total On Hand
CN					0
CP	175	11	57	30	273

**Change in Last 24 Hours**

	< 24 Hrs	24-48 Hrs	48 - 72 Hrs	> 72 Hrs
CN		-103		
CP	164	-168	48	-6

Loaded Cars on Hand Thunder Bay Waiting for Placement - Last 30 Days All Railways



## Measurement Definitions

Loads on Wheels	<p>Count of loaded rail cars including all rail cars that have been released loaded at origin and have not been reported by the railway as unloaded at destination.</p> <p>Counts include all rail cars (hopper cars and boxcars) moving within a pipeline.</p>
Loads Not Moving	<p>Loaded rail cars for which the railways have not reported a movement event for 48 hours or more whether the rail car is at origin, enroute or at destination.</p>
Port Unloads	<p>Count of rail cars reported by railways as unloaded at the western port destinations of Vancouver, Prince Rupert and Thunder Bay.</p> <p>Unload counts include all rail cars (hopper cars and boxcars) unloaded by all receivers including major port terminals, transloaders and other receivers.</p>
Cars Arrived	<p>Count of rail cars reported as arrived at the destination railway terminal.</p>
Cars Received in Interchange	<p>Count of rail cars received in interchange by each railway within a destination railway terminal. Interchange activity is tracked for the Vancouver and Thunder Bay pipelines as applicable.</p>
Cars Delivered in Interchange	<p>Count of rail cars delivered in interchange by each railway within a destination railway terminal. Interchange activity is tracked for the Vancouver and Thunder Bay pipelines as applicable.</p>
Cars Placed for Unloading	<p>Count of rail cars reported by the railways as placed loaded at the receiver's facility for unloading.</p>
Loads on Wheels at Destination	<p>Count of rail cars that remain under load within the destination railway terminal including rail cars that have been reported as placed for unloading but not yet reported as unloaded.</p>
Waiting Placement for Unloading	<p>Count of rail cars that have been reported as arrived at the destination railway terminal but not reported as placed for unloading by the railway.</p> <p>For the Ports of Vancouver, Prince Rupert and Thunder Bay the count of rail cars waiting placement for unloading is categorized by age – i.e. the elapsed time from arrival at destination to the current report date.</p>