

**SPEED READ**

- Loads on wheels decreased overnight, marking lower CP traffic offset by a rise in CN volumes. On a net basis, volumes declined due to lower volumes in the Thunder Bay, USA/MEX and E. Canada corridors offset by higher volumes in the Prince Rupert and Vancouver corridors.
- Network fluidity improved overnight, led by a decline in idle car counts on CP by 28% (-173) offset by a rise in idle car counts on CN by 38% (+119). The total count of cars for 4+ days on both railways increased slightly by 1% (+3) overnight - presently at 410 cars.
- Two days in Week 46 unloads now behind prior week's performance by 150 unloads, marking lower unloads at Vancouver and Thunder Bay offset by improved week over week performance at Prince Rupert.

**Loads on Wheels**

- Loads on wheels decreased 3% (-285) overnight, due to lower traffic on CP offset by higher volumes on CN - combined total at 8,805 and 4% above the trailing 30-day average.
- On a net basis, the decline in loads on wheels indicates lower volumes in the Thunder Bay, USA/MEX and E. Canada corridors offset by higher volumes in the Prince Rupert and Vancouver corridors.
- CN volumes increased 3% (+134) overnight and have now increased for the fourth consecutive day, with higher traffic in the Vancouver, E. Canada and Prince Rupert corridors offset by lower traffic in the Thunder Bay and USA/MEX corridors. System wide CN loads on wheels presently at 4,664, the highest seen in the last 30 days, and 13% above the trailing 30-day average.
- CP volumes fell 9% (-401) overnight, driven by a decline in traffic across all corridors - Vancouver, Thunder Bay, USA/MEX and E. Canada. CP system wide loads on wheels currently at 4,028 and 4% below the trailing 30-day average.
- Vancouver currently at 5,226, rose marginally by (+14) overnight, now 5% above the trailing 30-day average.
- The Prince Rupert pipeline currently at 1,278, gained for the third consecutive day, up 1% (+18) overnight, and 8% above the trailing 30-day average.
- Thunder Bay volumes declined significantly by 12% (-184) overnight - presently at 1,377 and 9% above the trailing 30-day average, with 80% of traffic moving on CP.

**Hopper Car Rationing**

- CN rationed no hopper cars in week 44.

**Loads Not Moving**

- **The count of cars not moving for 48+ hours declined 6% (-54) overnight, marking lower counts on CP offset by higher counts on CN. Idle car counts presently at 881 and 28% below the trailing 30-day average.**
- CN
  - **The count of idle cars for 48+ hours rose 38% (+119) overnight - currently at 435 cars.**
  - The number of cars idle for 4+ days declined 24% (-53) overnight - now at 169 cars.
  - The count of cars not moving for 7+ days fell 27% (-6) overnight - currently at 16 cars, the lowest seen in the last 30 days.
  - Vancouver represents 49% of all idle cars.
  - In total 71% of all idle cars are dwelling at origin locations.
- CP
  - **CP idle car counts for 48+ hours declined 28% (-173) overnight - currently at 446 cars.**
  - The number of cars idle for 4+ days rose 30% (+56) overnight - presently at 241 cars.

- The number of cars idle for 7+ days gained 30% (+6) overnight - presently at 26 cars.
- Vancouver accounts for 72% of all idle cars.
- In total 15% of all idle cars are dwelling at origin locations.

### **Port Performance**

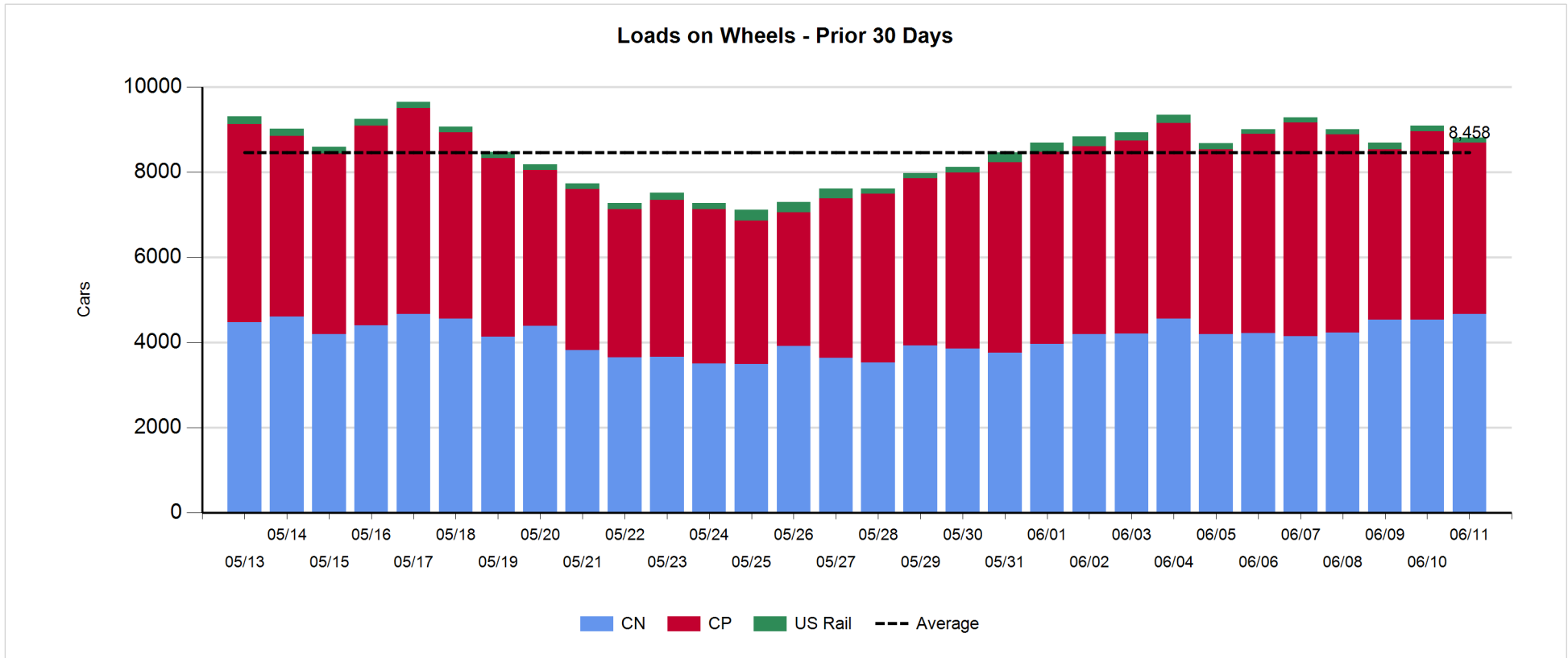
- CN and CP reported a total of 1,031 cars unloaded at the three major ports, now 3% below the trailing 30-day average. Two days in Week 46 unloads now behind last week's pace by 150 unloads, marking lower unloads at Vancouver and Thunder Bay offset by higher unloads at Prince Rupert.
- Vancouver
  - 602 unloads reported by CN and CP at the Port of Vancouver; CN - 155 and CP - 447. Two days in Week 46 unloads are tracking behind last week's performance by 150 unloads.
  - There are 1,000 cars on site at Vancouver with 500 cars arriving at the port in the last 24 hours.
  - CN and CP have nearly 1,400 cars in British Columbia en route to Vancouver, with more than 750 cars at Kamloops and west, and 54% of traffic moving on CP.
- Prince Rupert
  - Prince Rupert reported 187 unloads, now ahead of last week's unloads after two days by more than 100 unloads.
  - Loads on wheels now above 1,000 cars - currently at 1,278 cars.
  - There are around 200 cars west of Jasper en route to Prince Rupert.
  - There are about 150 cars on site at Prince Rupert with 150 cars arriving at the port in the last 24 hours.
- Thunder Bay
  - 242 unloads were reported at Thunder Bay yesterday. Two days in Week 46 unloads are tracking behind last week's pace by more than 100 unloads.
  - There are 600 cars on site at Thunder Bay with zero cars arriving at the port in the prior 24 hours.
  - There are more than 250 cars en route to Thunder Bay from Winnipeg and east.

**Daily Loads on Wheels - 6/11/2019**

	E Canada	Prince Rupert	Thunder Bay	USA/MEX	Vancouver	Total
CN	456	1,278	280	187	2,463	4,664
CP	52		1,097	135	2,744	4,028
Short Line	3				19	22
US Rail				91		91
	511	1,278	1,377	413	5,226	8,805

**Change in Loads on Wheels - Prior 24 Hours**

	E Canada	Prince Rupert	Thunder Bay	USA/MEX	Vancouver	Total
CN	19	18	-40	-24	161	134
CP	-62		-144	-47	-148	-401
Short Line	-8				1	-7
US Rail				-11		-11
	-51	18	-184	-82	14	-285

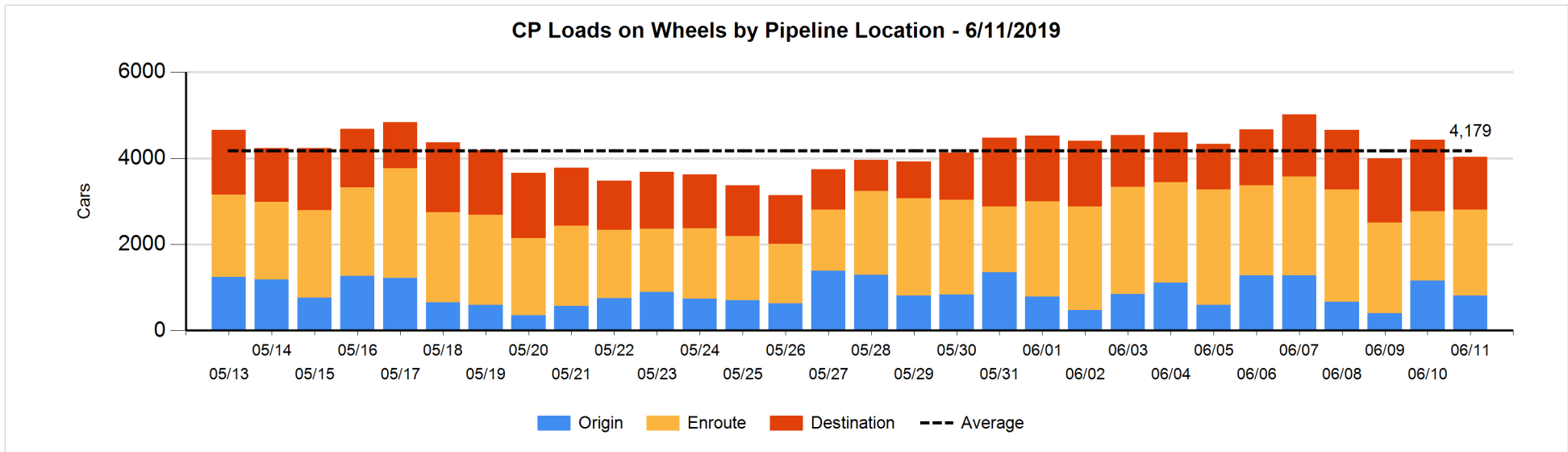
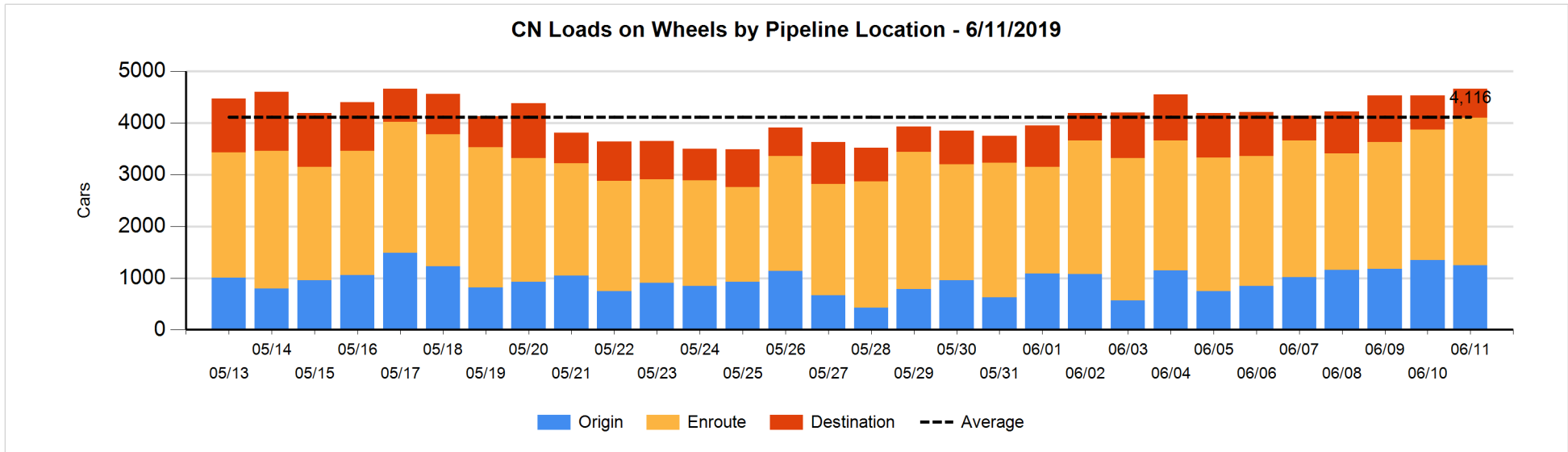


**Daily Loads on Wheels By Pipeline Location - 6/11/2019**

	E Canada	Prince Rupert	Thunder Bay	USA/MEX	Vancouver	Total
CN						
Origin	5	521	49	1	674	1,250
Enroute	428	624	100	162	1,534	2,848
Destination	23	133	131	24	255	566
	456	1,278	280	187	2,463	4,664
CP						
Origin	1		325	75	407	808
Enroute	42		294	44	1,619	1,999
Destination	9		478	16	718	1,221
	52		1,097	135	2,744	4,028
US Rail / Short Line						
Origin						
Enroute				69		69
Destination	3			22	19	44
	3			91	19	113

**Change in Daily Loads on Wheels By Pipeline Location - Prior 24 Hours**

	E Canada	Prince Rupert	Thunder Bay	USA/MEX	Vancouver	Total
CN						
Origin	5	-194	0	-4	98	-95
Enroute	68	276	0	-33	16	327
Destination	-54	-64	-40	13	47	-98
	19	18	-40	-24	161	134
CP						
Origin	1		-112	-2	-241	-354
Enroute	-1		170	-24	250	395
Destination	-62		-202	-21	-157	-442
	-62		-144	-47	-148	-401
US Rail / Short Line						
Origin						
Enroute				5		5
Destination	-8			-16	1	-23
	-8			-11	1	-18

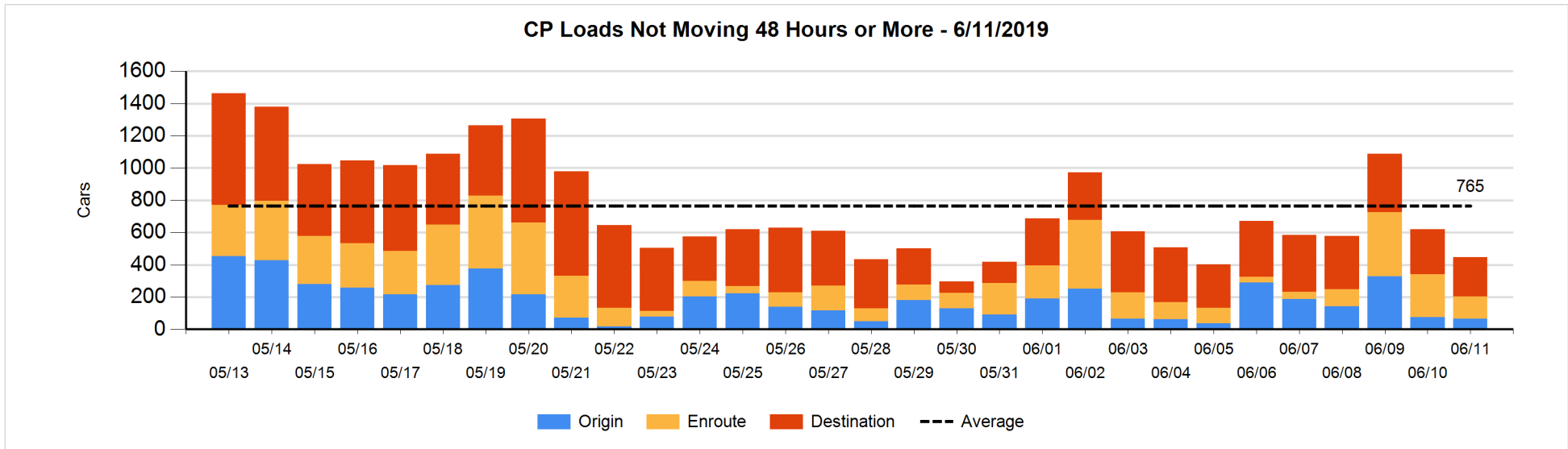
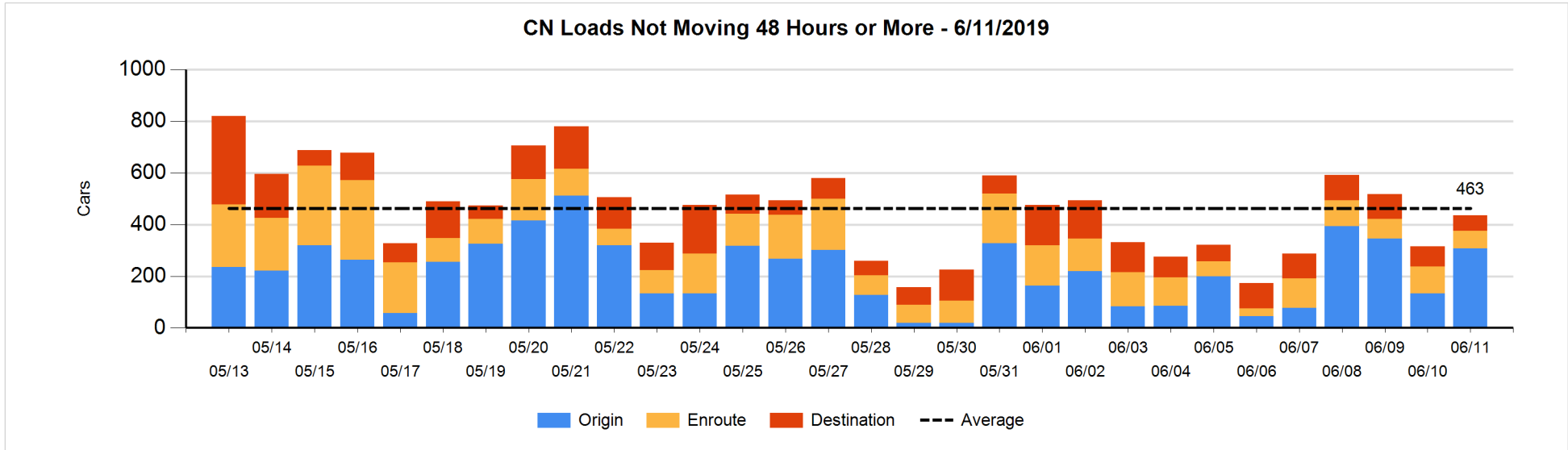


**Loads Not Moving 48 Hours or More - 6/11/2019**

	E Canada	Prince Rupert	Thunder Bay	USA/MEX	Vancouver	Total
<b>CN</b>						
Origin		103			204	307
Enroute	36	3		26	3	68
Destination	15	3	29	5	8	60
	51	109	29	31	215	435
<b>CP</b>						
Origin			12		53	65
Enroute	9		3		125	137
Destination			99		145	244
	9		114		323	446
<b>US Rail / Short Line</b>						
Origin						
Enroute				31		31
Destination	3			4	11	18
	3			35	11	49

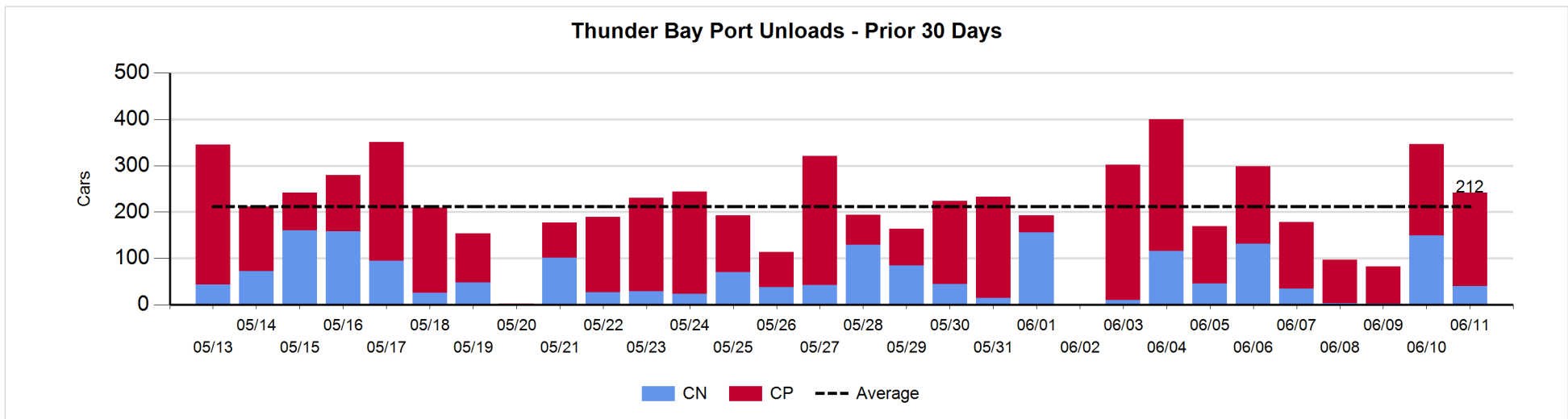
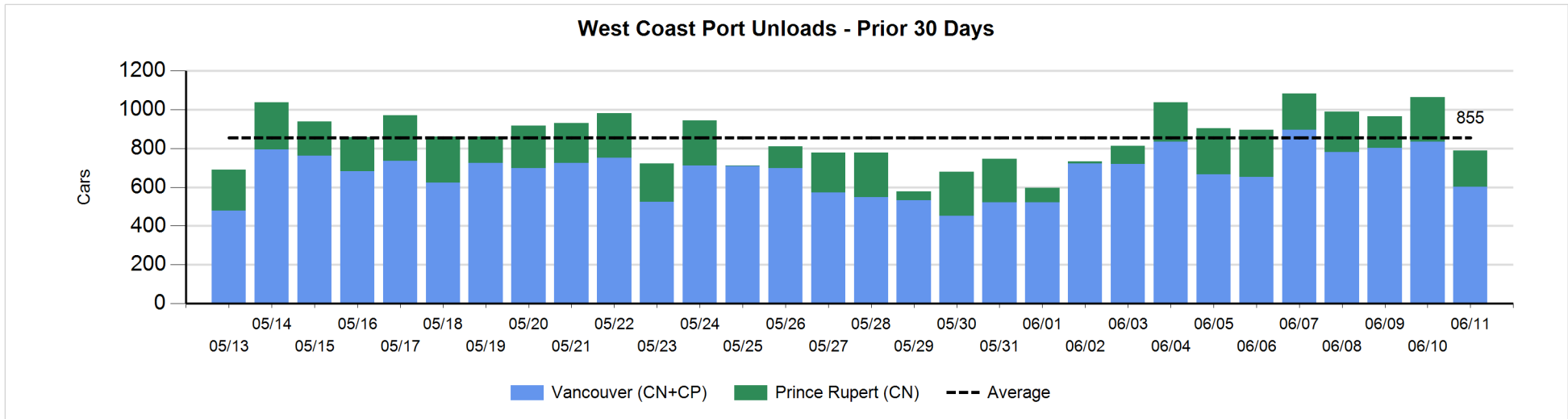
**Change in Loads Not Moving 48 Hours or More - 6/11/2019**

	E Canada	Prince Rupert	Thunder Bay	USA/MEX	Vancouver	Total
<b>CN</b>						
Origin		85			88	173
Enroute	2	1		-18	-21	-36
Destination	-48	3	28	-1	0	-18
	-46	89	28	-19	67	119
<b>CP</b>						
Origin			0	-2	-7	-9
Enroute	-3		-6	-26	-95	-130
Destination	-1		6	-6	-33	-34
	-4		0	-34	-135	-173
<b>US Rail / Short Line</b>						
Origin						
Enroute				0		0
Destination	-6			-12	-2	-20
	-6			-12	-2	-20



**Port Unloads - 6/11/2019**

	Prince Rupert	Vancouver	West Coast Total	Thunder Bay	Total
CN	187	155	342	40	382
CP		447	447	202	649
	187	602	789	242	1,031





## Port Terminal Status

### Vancouver

Daily Activity for 6/11/2019

	Cars Arrived	Cars Received in Interchange	Cars Delivered in Interchange	Cars Placed for Unloading	Loads on Wheels at Destination As of 6/11/2019
CN	197	117	55	156	255
CP	299	50	117	449	718
SRY		5		5	19

### Port Unloads

	06/11	06/10	Week To Date	Last Week
CN	155	344	499	2,064
CP	447	491	938	3,286
SRY	4	2	6	93

## Age Profile of Loaded Cars Waiting Placement for Unloading

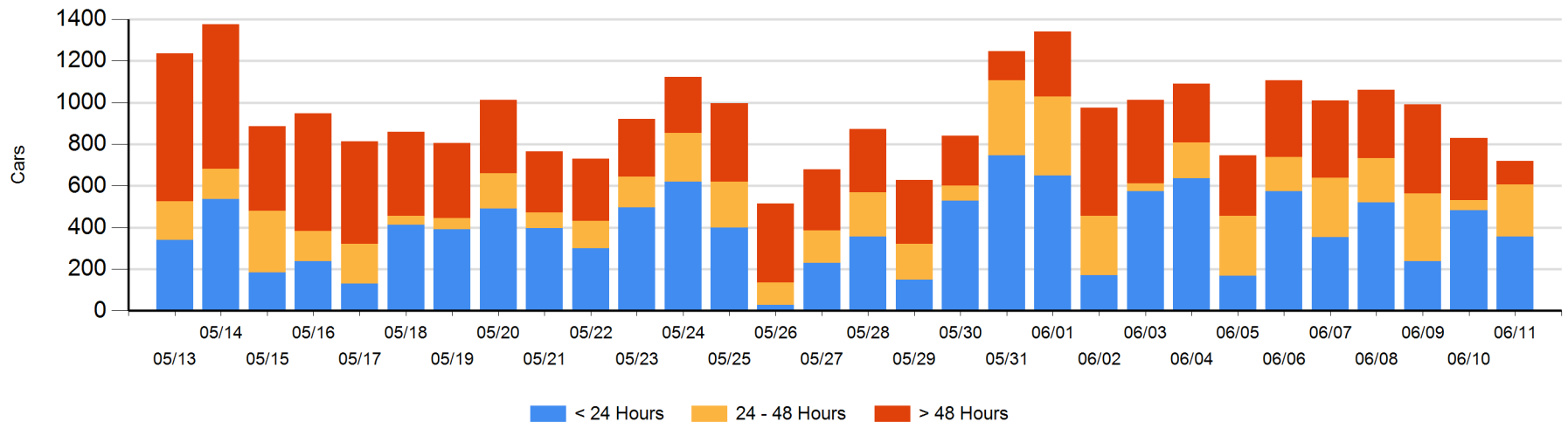
### Today

	< 24 Hrs	24 - 48 Hrs	> 48-72 Hrs	> 72 Hrs	Total On Hand
CN	172	35		27	234
CP	183	217	25	60	485
SRY					0

### Change in Last 24 Hours

	< 24 Hrs	24-48 Hrs	48 - 72 Hrs	> 72 Hrs
CN	101	15	-98	8
CP	-230	191	-11	-88
SRY				

Loaded Cars on Hand Vancouver Waiting for Placement - Last 30 Days All Railways



**Port Terminal Status**

**Prince Rupert**

**Daily Activity for 6/11/2019**

	Cars Arrived	Cars Received in Interchange	Cars Delivered in Interchange	Cars Placed for Unloading	Loads on Wheels at Destination As of 6/11/2019
CN	147			135	133

**Port Unloads**

	06/11	06/10	Week To Date	Last Week
CN	187	230	417	1,337

**Age Profile of Loaded Cars Waiting Placement for Unloading**

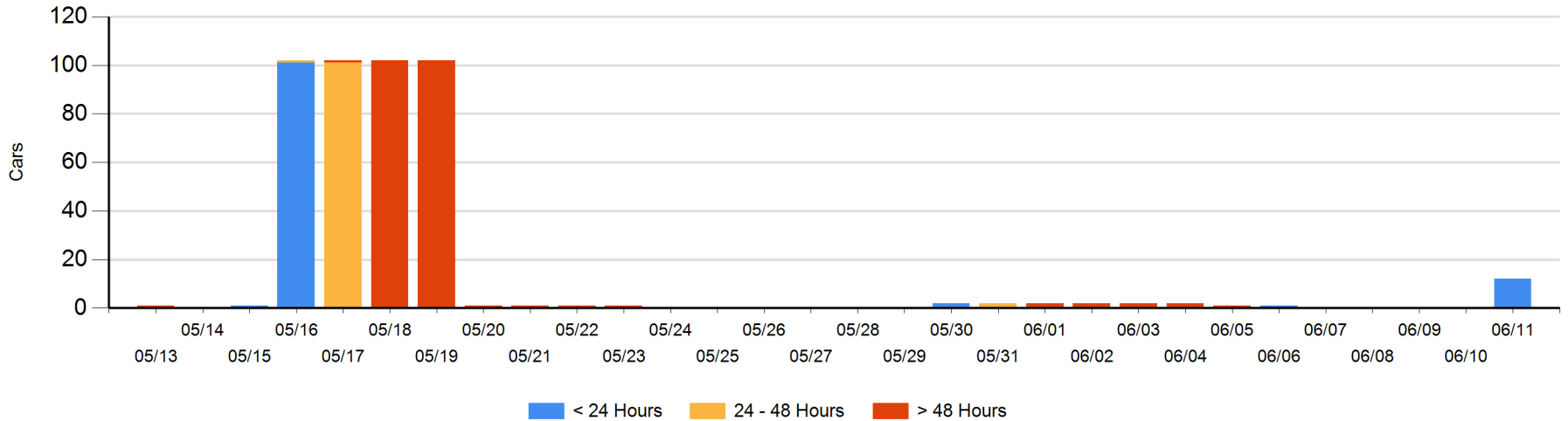
**Today**

	< 24 Hrs	24 - 48 Hrs	> 48-72 Hrs	> 72 Hrs	Total On Hand
CN	12				12

**Change in Last 24 Hours**

	< 24 Hrs	24-48 Hrs	48 - 72 Hrs	> 72 Hrs
CN	12			

**Loaded Cars on Hand Prince Rupert Waiting for Placement - Last 30 Days All Railways**



**Port Terminal Status**

**Thunder Bay**

Daily Activity for 6/11/2019

	Cars Arrived	Cars Received in Interchange	Cars Delivered in Interchange	Cars Placed for Unloading	Loads on Wheels at Destination As of 6/11/2019
CN					131
CP				294	478

**Port Unloads**

	06/11	06/10	Week To Date	Last Week
CN	40	149	189	345
CP	202	197	399	1,182

**Age Profile of Loaded Cars Waiting Placement for Unloading**

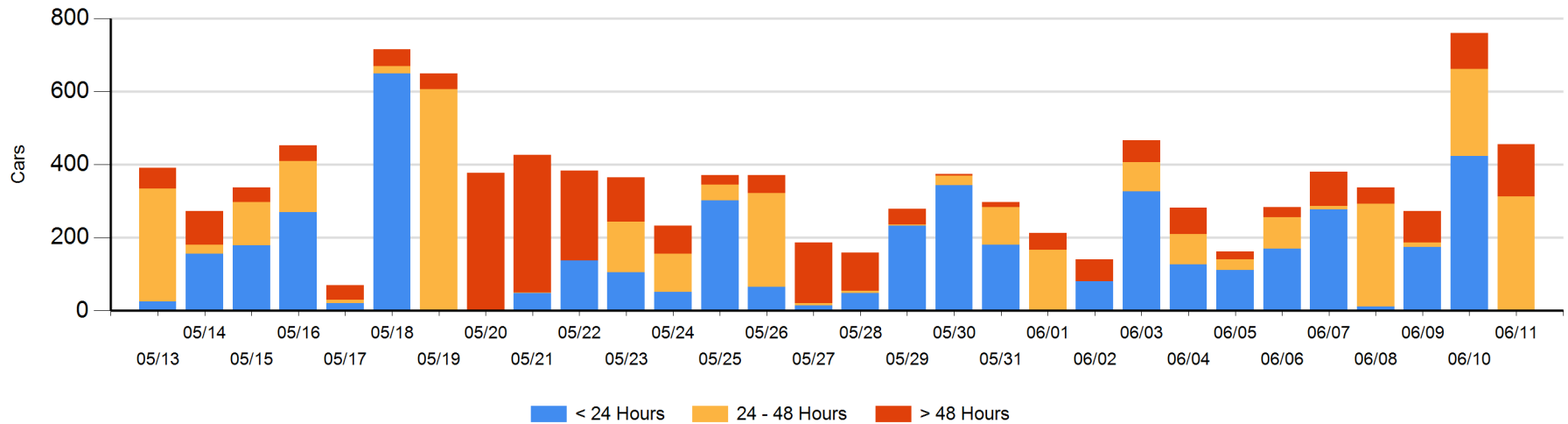
**Today**

	< 24 Hrs	24 - 48 Hrs	> 48-72 Hrs	> 72 Hrs	Total On Hand
CN		102			102
CP		210	101	43	354

**Change in Last 24 Hours**

	< 24 Hrs	24-48 Hrs	48 - 72 Hrs	> 72 Hrs
CN	-102	102		
CP	-322	-28	90	-44

**Loaded Cars on Hand Thunder Bay Waiting for Placement - Last 30 Days All Railways**



## Measurement Definitions

Loads on Wheels	<p>Count of loaded rail cars including all rail cars that have been released loaded at origin and have not been reported by the railway as unloaded at destination.</p> <p>Counts include all rail cars (hopper cars and boxcars) moving within a pipeline.</p>
Loads Not Moving	<p>Loaded rail cars for which the railways have not reported a movement event for 48 hours or more whether the rail car is at origin, enroute or at destination.</p>
Port Unloads	<p>Count of rail cars reported by railways as unloaded at the western port destinations of Vancouver, Prince Rupert and Thunder Bay.</p> <p>Unload counts include all rail cars (hopper cars and boxcars) unloaded by all receivers including major port terminals, transloaders and other receivers.</p>
Cars Arrived	<p>Count of rail cars reported as arrived at the destination railway terminal.</p>
Cars Received in Interchange	<p>Count of rail cars received in interchange by each railway within a destination railway terminal. Interchange activity is tracked for the Vancouver and Thunder Bay pipelines as applicable.</p>
Cars Delivered in Interchange	<p>Count of rail cars delivered in interchange by each railway within a destination railway terminal. Interchange activity is tracked for the Vancouver and Thunder Bay pipelines as applicable.</p>
Cars Placed for Unloading	<p>Count of rail cars reported by the railways as placed loaded at the receiver's facility for unloading.</p>
Loads on Wheels at Destination	<p>Count of rail cars that remain under load within the destination railway terminal including rail cars that have been reported as placed for unloading but not yet reported as unloaded.</p>
Waiting Placement for Unloading	<p>Count of rail cars that have been reported as arrived at the destination railway terminal but not reported as placed for unloading by the railway.</p> <p>For the Ports of Vancouver, Prince Rupert and Thunder Bay the count of rail cars waiting placement for unloading is categorized by age – i.e. the elapsed time from arrival at destination to the current report date.</p>