

## SPEED READ

- Loads on wheels increased overnight, marking a rise in CN volumes offset by lower CP volumes. On a net basis, volumes increased due to higher volumes in the Vancouver, Prince Rupert and E. Canada corridors offset by lower volumes in the Thunder Bay and USA/MEX corridors.
- Network fluidity deteriorated overnight, led by a rise in idle car counts on CP by 63% (+281) offset by a decline in idle car counts on CN by 12% (-51). The total count of cars for 4+ days on both railways fell significantly by 49% (-202) overnight - presently at 208 cars.
- Three days in Week 46 unloads now behind prior week's performance by nearly 50 unloads, reflecting lower unloads at Vancouver offset by improved week over week performance at Thunder Bay and Prince Rupert.

## Loads on Wheels

- Loads on wheels increased 2% (+166) overnight, due to higher volumes on CN offset by lower volumes on CP - combined total at 9,030 and 7% above the trailing 30-day average.
- On a net basis, the increase in loads on wheels indicates higher volumes in the Vancouver, Prince Rupert and E. Canada corridors offset by lower volumes in the Thunder Bay and USA/MEX corridors.
- CN volumes gained for the fifth consecutive day, up 5% (+256) overnight, with higher volumes in the Prince Rupert, Vancouver and E. Canada corridors offset by lower volumes in the Thunder Bay and USA/MEX corridors. System wide CN loads on wheels now at 4,974, the highest seen in the last 30 days, and 20% above the trailing 30-day average.
- CP volumes fell 2% (-86) overnight, driven by a decline in volumes across all corridors other than Vancouver. CP system wide loads on wheels presently at 3,947 and 5% below the trailing 30-day average.
- Vancouver now at 5,613, increased 6% (+333) overnight and have now increased for the third consecutive day, now 13% above the trailing 30-day average.
- The Prince Rupert pipeline now at 1,432, increased significantly by 12% (+154) overnight and has now increased for the fourth consecutive day, and 21% above the trailing 30-day average.
- Thunder Bay volumes fell significantly by 22% (-297) overnight - now at 1,081 and 14% below the trailing 30-day average, with 77% of traffic moving on CP.

## Hopper Car Rationing

- CN rationed 25 hopper cars in week 45.

## Loads Not Moving

- **The count of cars not moving for 48+ hours increased 26% (+230) overnight, reflecting higher counts on CP offset by lower counts on CN. Idle car counts now at 1,112 and 7% below the trailing 30-day average.**
- CN
  - **The count of idle cars for 48+ hours declined 12% (-51) overnight - presently at 384 cars.**
  - The number of cars idle for 4+ days fell significantly by 73% (-123) overnight - now at 46 cars.
  - The count of cars not moving for 7+ days gained significantly by 113% (+18) overnight - presently at 34 cars.
  - Vancouver represents 57% of all idle cars.
  - In total 68% of all idle cars are dwelling at origin locations.
- CP

- **CP idle car counts for 48+ hours gained significantly by 63% (+281) overnight - now at 728 cars.**
- The number of cars idle for 4+ days fell 33% (-79) overnight - presently at 162 cars.
- The number of cars idle for 7+ days fell 8% (-2) overnight - presently at 24 cars.
- Vancouver accounts for 46% of all idle cars.
- In total 33% of all idle cars are dwelling at origin locations.

### **Port Performance**

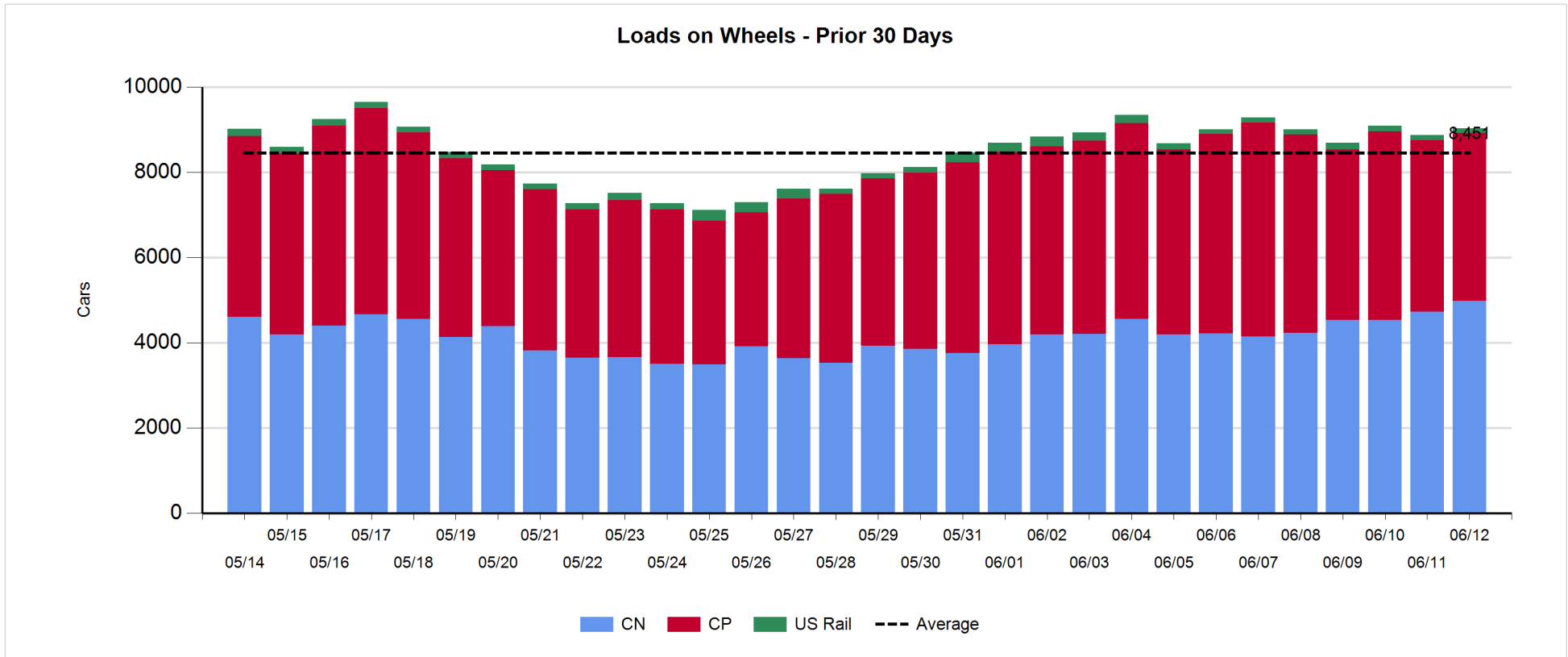
- CN and CP reported a total of 1,214 cars unloaded at the three major ports, now 13% above the trailing 30-day average. Three days in Week 46 unloads now behind last week's pace by less than 50 unloads, reflecting lower unloads at Vancouver offset by higher unloads at Thunder Bay and Prince Rupert.
- Vancouver
  - 787 unloads reported by CN and CP at the Port of Vancouver; CN - 337 and CP - 450. Three days in Week 46 unloads are tracking behind last week's performance by 50 unloads.
  - There are more than 1,350 cars on site at Vancouver with less than 1,200 cars arriving at the port in the last 24 hours.
  - CN and CP have more than 1,450 cars in British Columbia en route to Vancouver, with 450 cars at Kamloops and west, and 62% of traffic moving on CN.
- Prince Rupert
  - Prince Rupert reported 130 unloads, now ahead of last week's unloads after three days by 10 unloads.
  - Loads on wheels now above 1,000 cars - now at 1,432 cars.
  - There are fewer than 250 cars west of Jasper en route to Prince Rupert.
  - There are 3 cars on site at Prince Rupert with 21 cars arriving at the port in the last 24 hours.
- Thunder Bay
  - 297 unloads were reported at Thunder Bay yesterday. Three days in Week 46 unloads are tracking ahead of last week's pace by 14 unloads.
  - There are about 550 cars on site at Thunder Bay with more than 200 cars arriving at the port in the prior 24 hours.
  - There are 50 cars en route to Thunder Bay from Winnipeg and east.

**Daily Loads on Wheels - 6/12/2019**

	E Canada	Prince Rupert	Thunder Bay	USA/MEX	Vancouver	Total
CN	463	1,432	248	182	2,649	4,974
CP	47		833	120	2,947	3,947
Short Line	4				17	21
US Rail				88		88
	514	1,432	1,081	390	5,613	9,030

**Change in Loads on Wheels - Prior 24 Hours**

	E Canada	Prince Rupert	Thunder Bay	USA/MEX	Vancouver	Total
CN	7	154	-32	-5	132	256
CP	-7		-265	-17	203	-86
Short Line	1				-2	-1
US Rail				-3		-3
	1	154	-297	-25	333	166

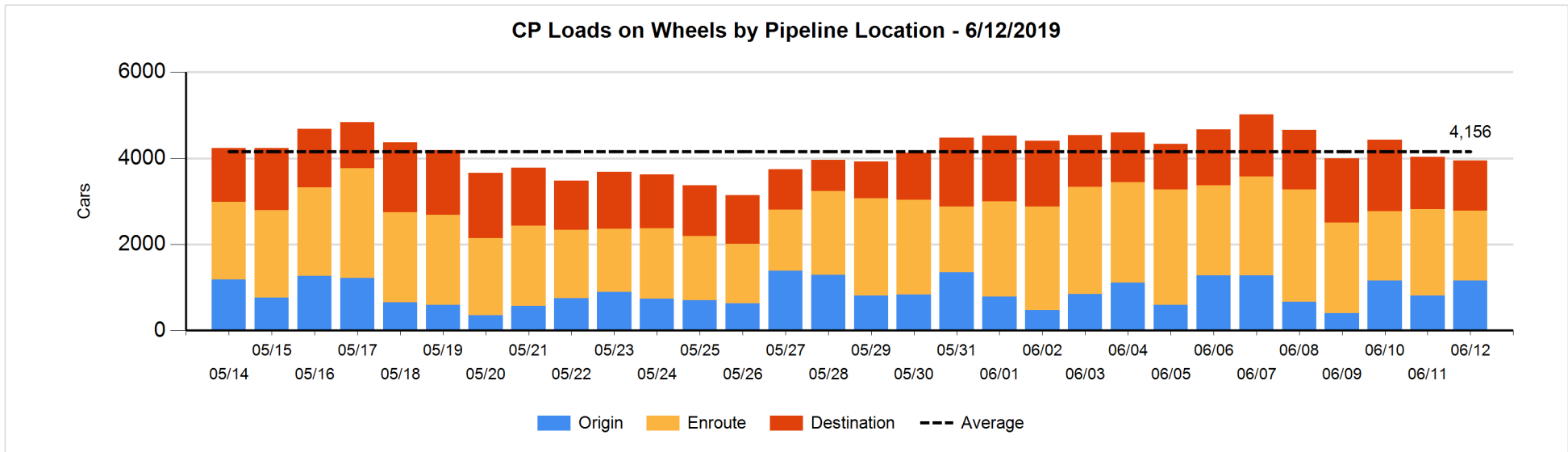
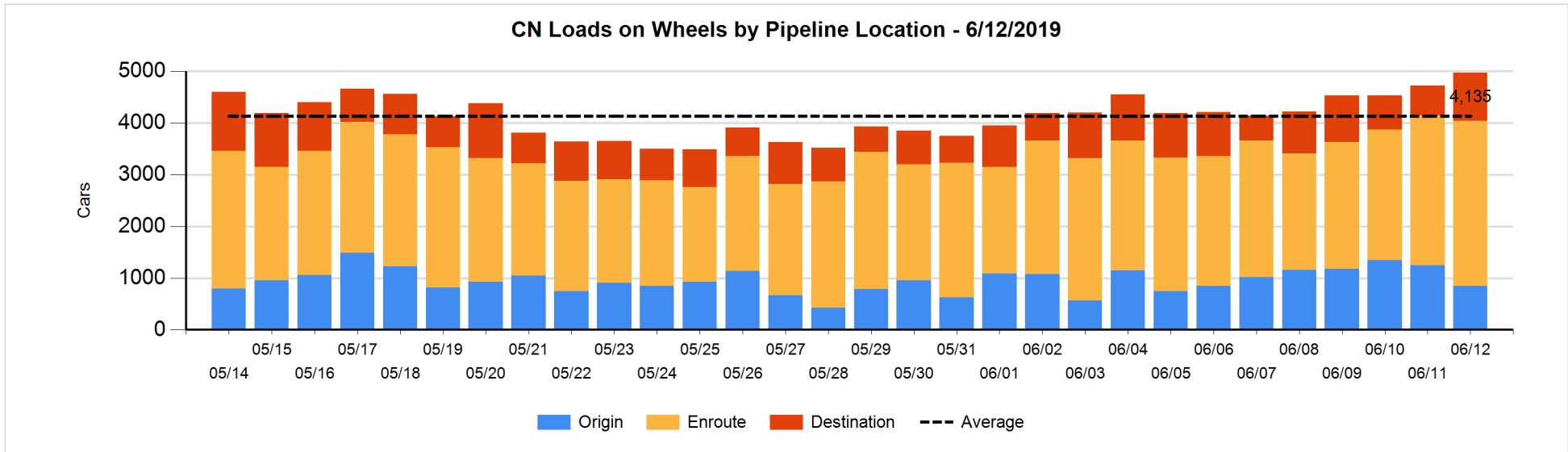


**Daily Loads on Wheels By Pipeline Location - 6/12/2019**

	E Canada	Prince Rupert	Thunder Bay	USA/MEX	Vancouver	Total
CN						
Origin	27	258		9	548	842
Enroute	312	1,171	49	126	1,542	3,200
Destination	124	3	199	47	559	932
	463	1,432	248	182	2,649	4,974
CP						
Origin	1		111	74	974	1,160
Enroute	21		388	46	1,171	1,626
Destination	25		334		802	1,161
	47		833	120	2,947	3,947
US Rail / Short Line						
Origin						
Enroute				75		75
Destination	4			13	17	34
	4			88	17	109

**Change in Daily Loads on Wheels By Pipeline Location - Prior 24 Hours**

	E Canada	Prince Rupert	Thunder Bay	USA/MEX	Vancouver	Total
CN						
Origin	22	-263	-49	8	-125	-407
Enroute	-116	547	-51	-36	-47	297
Destination	101	-130	68	23	304	366
	7	154	-32	-5	132	256
CP						
Origin	-2		-214	-1	567	350
Enroute	-21		93	0	-448	-376
Destination	16		-144	-16	84	-60
	-7		-265	-17	203	-86
US Rail / Short Line						
Origin						
Enroute				6		6
Destination	1			-9	-2	-10
	1			-3	-2	-4

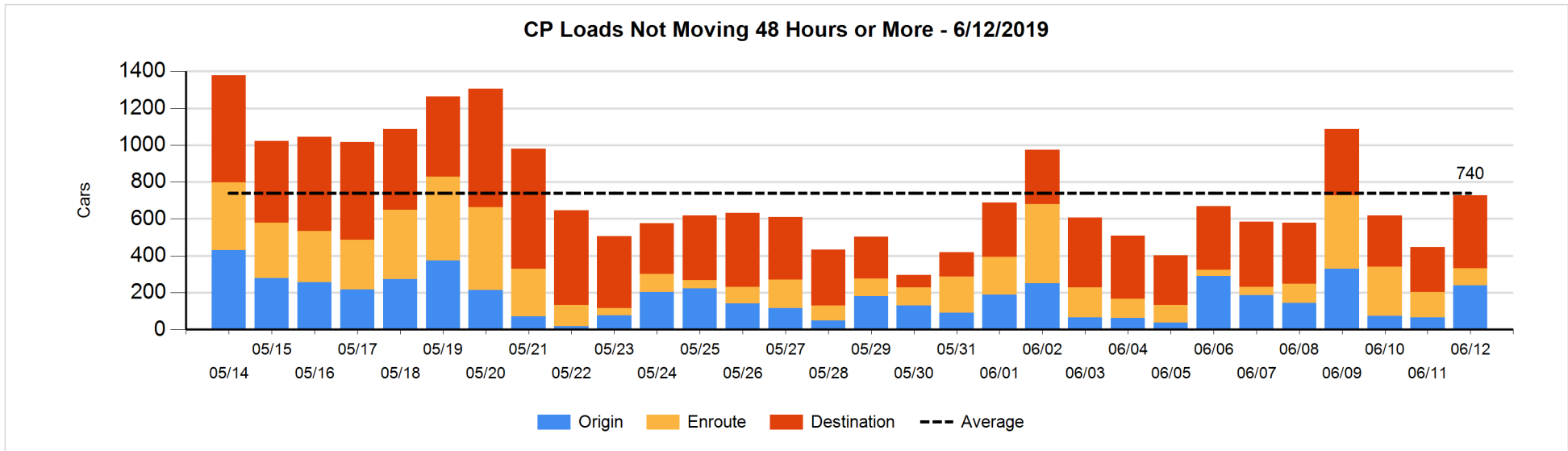
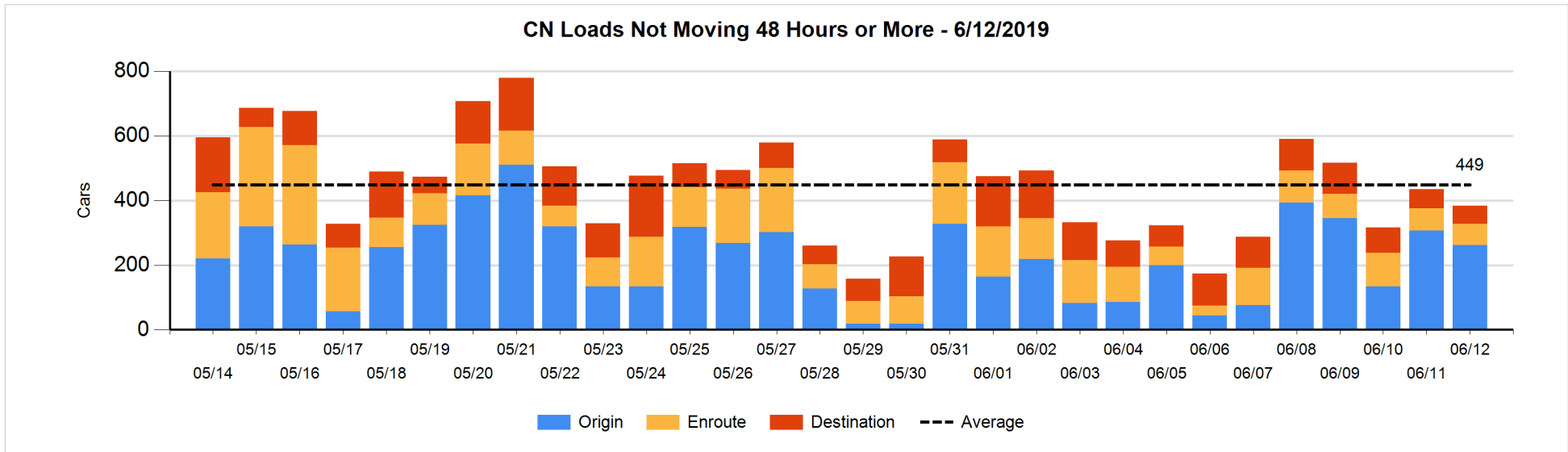


**Loads Not Moving 48 Hours or More - 6/12/2019**

	E Canada	Prince Rupert	Thunder Bay	USA/MEX	Vancouver	Total
<b>CN</b>						
Origin		55		1	206	262
Enroute	28	30		6	2	66
Destination	15	3	23	5	10	56
	43	88	23	12	218	384
<b>CP</b>						
Origin			111	74	55	240
Enroute	2		3		88	93
Destination			202		193	395
	2		316	74	336	728
<b>US Rail / Short Line</b>						
Origin						
Enroute				31		31
Destination	3			3	7	13
	3			34	7	44

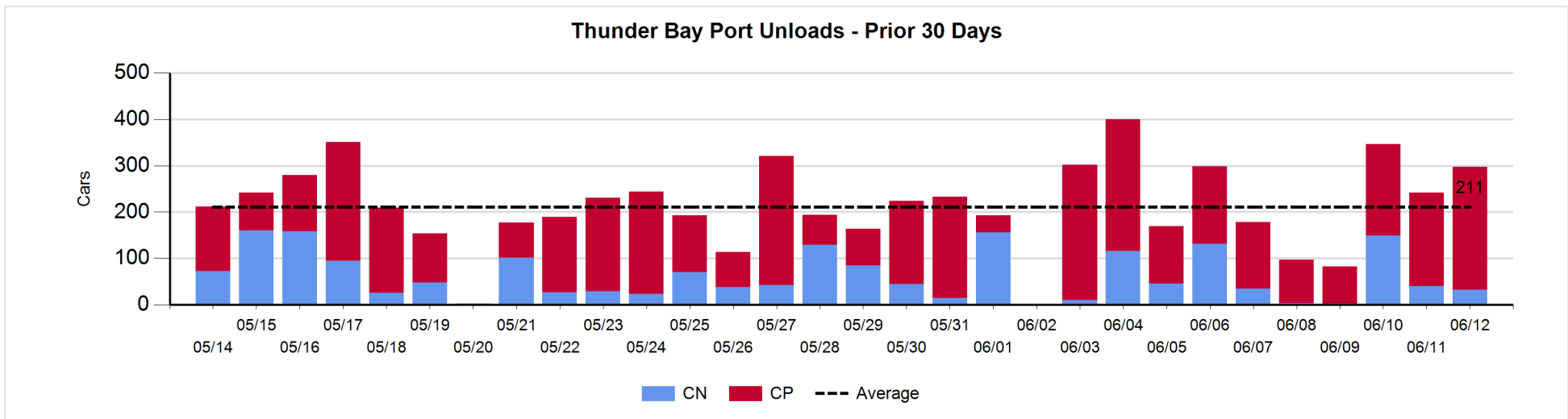
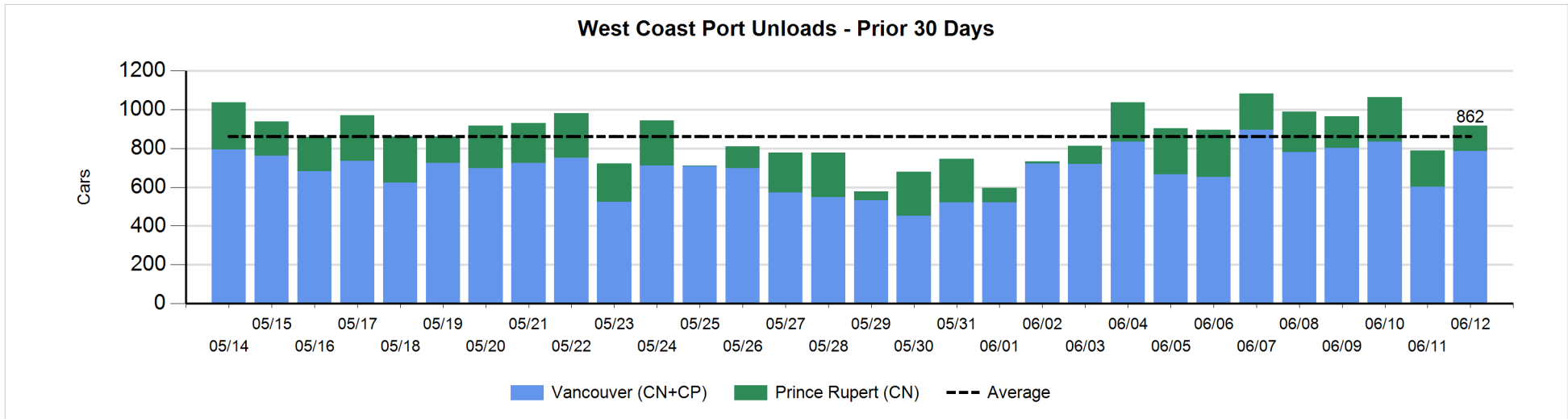
**Change in Loads Not Moving 48 Hours or More - 6/12/2019**

	E Canada	Prince Rupert	Thunder Bay	USA/MEX	Vancouver	Total
<b>CN</b>						
Origin		-48		1	2	-45
Enroute	-8	27		-20	-1	-2
Destination	0	0	-6	0	2	-4
	-8	-21	-6	-19	3	-51
<b>CP</b>						
Origin			99	74	2	175
Enroute	-7		-1		-37	-45
Destination			103		48	151
	-7		201	74	13	281
<b>US Rail / Short Line</b>						
Origin						
Enroute				0		0
Destination	0			-1	-4	-5
	0			-1	-4	-5



**Port Unloads - 6/12/2019**

	Prince Rupert	Vancouver	West Coast Total	Thunder Bay	Total
CN	130	337	467	32	499
CP		450	450	265	715
	130	787	917	297	1,214





**Port Terminal Status**

**Vancouver**

Daily Activity for 6/12/2019

	Cars Arrived	Cars Received in Interchange	Cars Delivered in Interchange	Cars Placed for Unloading	Loads on Wheels at Destination As of 6/12/2019
CN	709	224	97	477	559
CP	471	97	229	417	802
SRY		5		4	17

**Port Unloads**

	06/12	06/11	Week To Date	Last Week
CN	337	155	836	2,064
CP	450	447	1,388	3,286
SRY	7	4	13	93

**Age Profile of Loaded Cars Waiting Placement for Unloading**

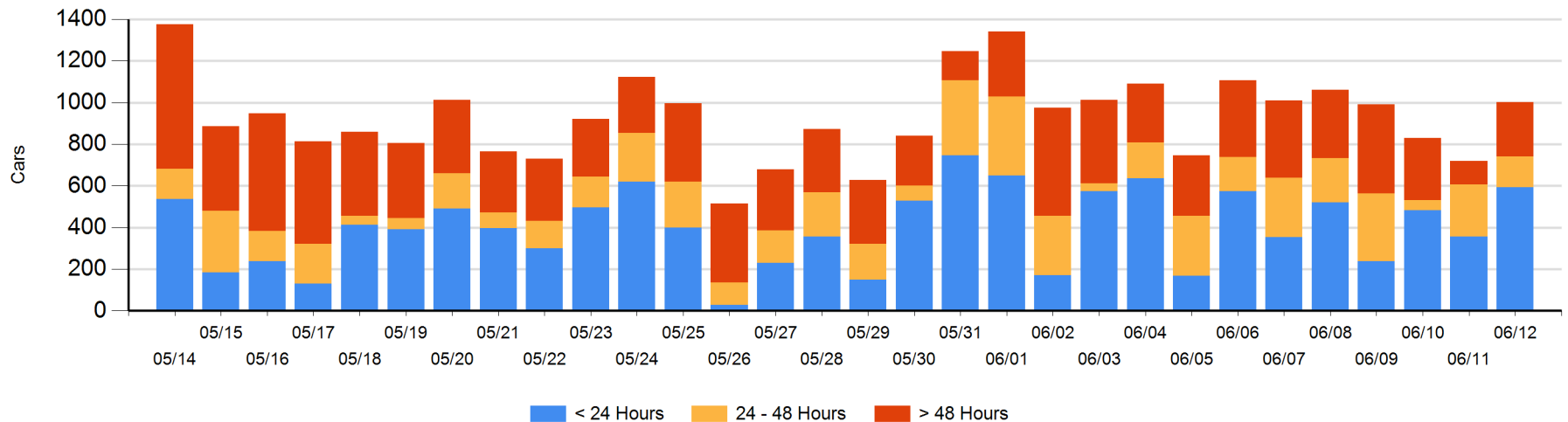
**Today**

	< 24 Hrs	24 - 48 Hrs	> 48-72 Hrs	> 72 Hrs	Total On Hand
CN	272	76	35	18	401
CP	321	72	126	83	602
SRY					0

**Change in Last 24 Hours**

	< 24 Hrs	24-48 Hrs	48 - 72 Hrs	> 72 Hrs
CN	100	41	35	-9
CP	138	-145	101	23
SRY				

**Loaded Cars on Hand Vancouver Waiting for Placement - Last 30 Days All Railways**



**Port Terminal Status**

**Prince Rupert**

Daily Activity for 6/12/2019

	Cars Arrived	Cars Received in Interchange	Cars Delivered in Interchange	Cars Placed for Unloading	Loads on Wheels at Destination As of 6/12/2019
CN	21			12	3

**Port Unloads**

	06/12	06/11	Week To Date	Last Week
CN	130	187	547	1,337

**Age Profile of Loaded Cars Waiting Placement for Unloading**

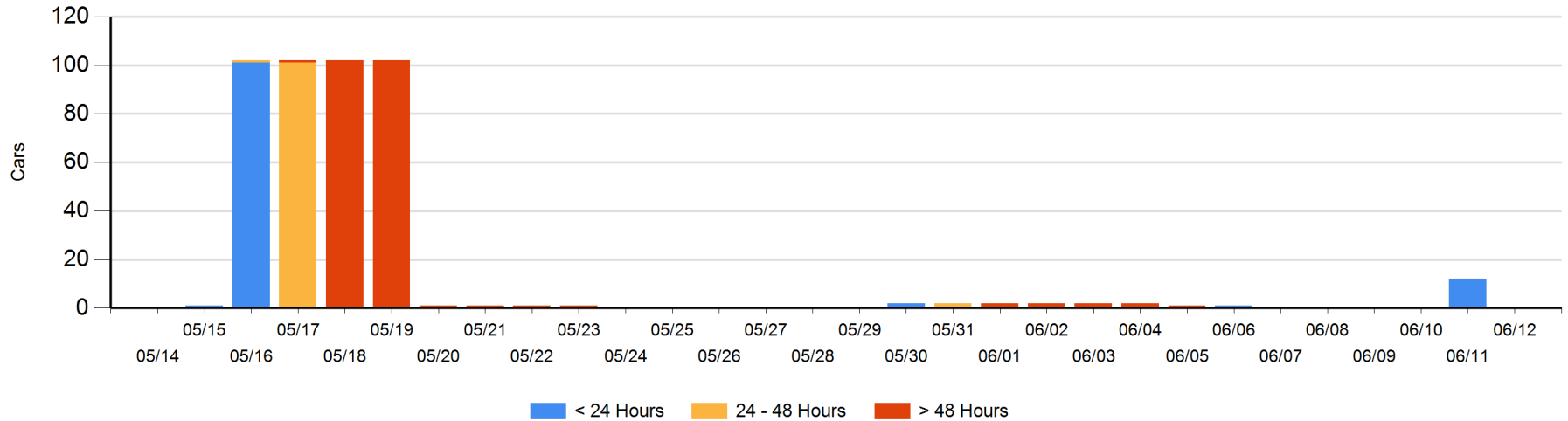
**Today**

	< 24 Hrs	24 - 48 Hrs	> 48-72 Hrs	> 72 Hrs	Total On Hand
CN					0

**Change in Last 24 Hours**

	< 24 Hrs	24-48 Hrs	48 - 72 Hrs	> 72 Hrs
CN	-12			

Loaded Cars on Hand Prince Rupert Waiting for Placement - Last 30 Days All Railways



**Port Terminal Status**

**Thunder Bay**

Daily Activity for 6/12/2019

	Cars Arrived	Cars Received in Interchange	Cars Delivered in Interchange	Cars Placed for Unloading	Loads on Wheels at Destination As of 6/12/2019
CN	100			175	199
CP	121			152	334

**Port Unloads**

	06/12	06/11	Week To Date	Last Week
CN	32	40	221	345
CP	265	202	664	1,182

**Age Profile of Loaded Cars Waiting Placement for Unloading**

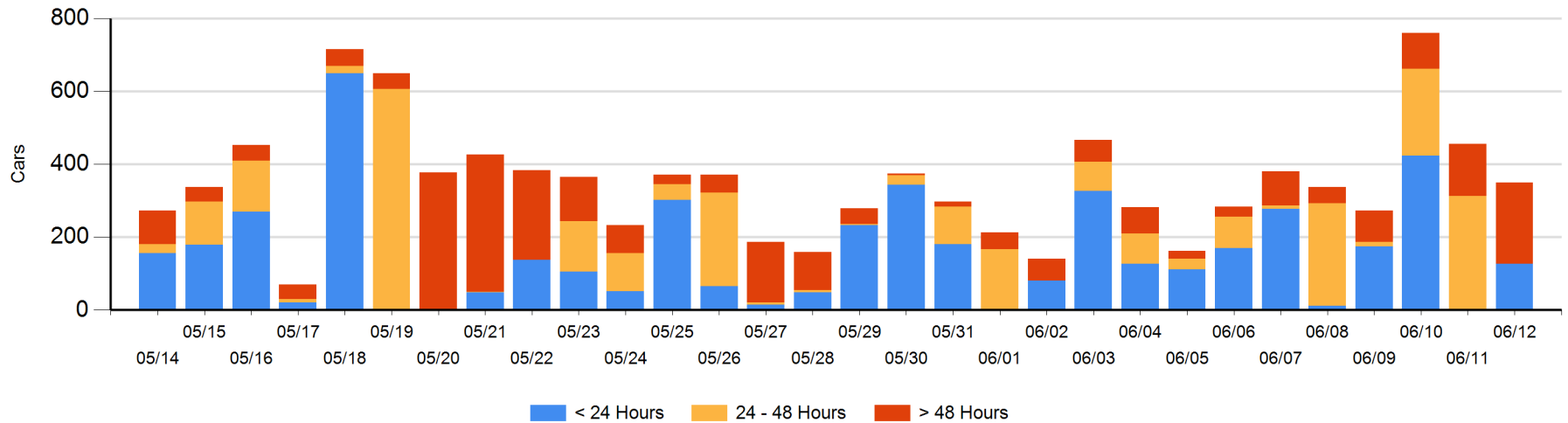
**Today**

	< 24 Hrs	24 - 48 Hrs	> 48-72 Hrs	> 72 Hrs	Total On Hand
CN	5		22		27
CP	121		93	109	323

**Change in Last 24 Hours**

	< 24 Hrs	24-48 Hrs	48 - 72 Hrs	> 72 Hrs
CN	5	-102	22	
CP	121	-210	-8	66

**Loaded Cars on Hand Thunder Bay Waiting for Placement - Last 30 Days All Railways**



## Measurement Definitions

Loads on Wheels	<p>Count of loaded rail cars including all rail cars that have been released loaded at origin and have not been reported by the railway as unloaded at destination.</p> <p>Counts include all rail cars (hopper cars and boxcars) moving within a pipeline.</p>
Loads Not Moving	<p>Loaded rail cars for which the railways have not reported a movement event for 48 hours or more whether the rail car is at origin, enroute or at destination.</p>
Port Unloads	<p>Count of rail cars reported by railways as unloaded at the western port destinations of Vancouver, Prince Rupert and Thunder Bay.</p> <p>Unload counts include all rail cars (hopper cars and boxcars) unloaded by all receivers including major port terminals, transloaders and other receivers.</p>
Cars Arrived	<p>Count of rail cars reported as arrived at the destination railway terminal.</p>
Cars Received in Interchange	<p>Count of rail cars received in interchange by each railway within a destination railway terminal. Interchange activity is tracked for the Vancouver and Thunder Bay pipelines as applicable.</p>
Cars Delivered in Interchange	<p>Count of rail cars delivered in interchange by each railway within a destination railway terminal. Interchange activity is tracked for the Vancouver and Thunder Bay pipelines as applicable.</p>
Cars Placed for Unloading	<p>Count of rail cars reported by the railways as placed loaded at the receiver's facility for unloading.</p>
Loads on Wheels at Destination	<p>Count of rail cars that remain under load within the destination railway terminal including rail cars that have been reported as placed for unloading but not yet reported as unloaded.</p>
Waiting Placement for Unloading	<p>Count of rail cars that have been reported as arrived at the destination railway terminal but not reported as placed for unloading by the railway.</p> <p>For the Ports of Vancouver, Prince Rupert and Thunder Bay the count of rail cars waiting placement for unloading is categorized by age – i.e. the elapsed time from arrival at destination to the current report date.</p>