

SPEED READ

- Loads on wheels declined overnight, marking a decline in CN volumes offset by higher CP volumes. On a net basis, volumes declined due to reduced traffic in the Vancouver, Thunder Bay and USA/MEX corridors offset by higher volumes in the Prince Rupert and E. Canada corridors.
- Network fluidity improved overnight, led by a decline in idle car counts on both CN and CP by 82% (-315) and 29% (-212), respectively. The total count of cars for 4+ days on both railways fell 21% (-43) overnight - now at 165 cars.
- Four days in Week 46 unloads now ahead of prior week's performance by more than 100 unloads, marking improved week over week performance at Vancouver and Thunder Bay offset by reduced unloads at Prince Rupert.

Loads on Wheels

- Loads on wheels declined 5% (-486) overnight, due to lower traffic on CN offset by higher volumes on CP - combined total at 8,686 and 3% above the trailing 30-day average.
- On a net basis, the decline in loads on wheels reflects reduced traffic in the Vancouver, Thunder Bay and USA/MEX corridors offset by higher volumes in the Prince Rupert and E. Canada corridors.
- CN volumes decreased significantly by 10% (-509) overnight, with lower volumes in the Vancouver, Thunder Bay and USA/MEX corridors offset by higher volumes in the Prince Rupert and E. Canada corridors. System wide CN loads on wheels currently at 4,495 and 9% above the trailing 30-day average.
- CP volumes increased slightly by (+09) overnight, driven by an increase in traffic in the Vancouver corridor offset by a decline in volumes in the Thunder Bay, E. Canada and USA/MEX corridors. CP system wide loads on wheels currently at 4,068 and 2% below the trailing 30-day average.
- Vancouver now at 5,276, declined 8% (-479) overnight, now 6% above the trailing 30-day average.
- The Prince Rupert pipeline currently at 1,510, increased 5% (+78) overnight and have now increased for the fifth consecutive day, and 26% above the trailing 30-day average.
- Thunder Bay volumes decreased for the third consecutive day, down 10% (-106) overnight - currently at 975 and 21% below the trailing 30-day average, with 84% of traffic moving on CP.

Hopper Car Rationing

- CN rationed 25 hopper cars in week 45.

Loads Not Moving

- **The count of cars not moving for 48+ hours declined significantly by 47% (-527) overnight, marking lower counts on both CN and CP. Idle car counts currently at 585 and 49% below the trailing 30-day average.**
- CN
 - **The count of idle cars for 48+ hours declined significantly by 82% (-315) overnight - currently at 69 cars, the lowest seen in the last 30 days.**
 - The number of cars idle for 4+ days increased 9% (+4) overnight - currently at 50 cars.
 - The count of cars not moving for 7+ days decreased 3% (-1) overnight - currently at 33 cars.
 - Vancouver represents 23% of all idle cars.
 - In total 9% of all idle cars are dwelling at origin locations.
- CP
 - **CP idle car counts for 48+ hours fell 29% (-212) overnight - presently at 516 cars.**

- The number of cars idle for 4+ days decreased 29% (-47) overnight - currently at 115 cars.
- The number of cars idle for 7+ days increased 21% (+5) overnight - currently at 29 cars.
- Vancouver accounts for 56% of all idle cars.
- In total 18% of all idle cars are dwelling at origin locations.

Port Performance

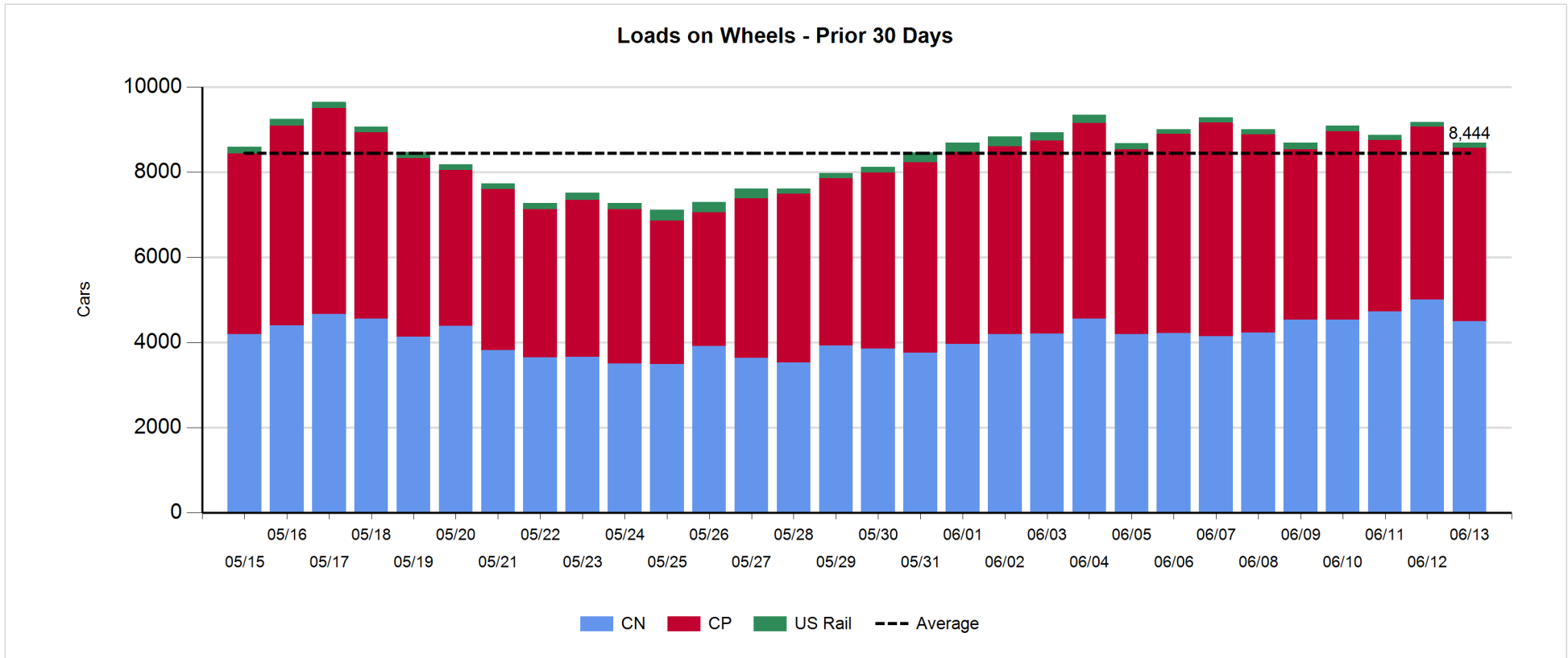
- CN and CP reported a total of 1,345 cars unloaded at the three major ports, now 25% above the trailing 30-day average. Four days in Week 46 unloads now ahead of last week's pace by more than 100 unloads, marking higher unloads at Vancouver and Thunder Bay offset by reduced unloads at Prince Rupert.
- Vancouver
 - 877 unloads reported by CN and CP at the Port of Vancouver; CN - 475 and CP - 402. Four days in Week 46 unloads are tracking ahead of last week's performance by more than 150 unloads.
 - There are 1,200 cars on site at Vancouver with 700 cars arriving at the port in the last 24 hours.
 - CN and CP have more than 1,200 cars in British Columbia en route to Vancouver, with fewer than 900 cars at Kamloops and west, and 51% of traffic moving on CN.
- Prince Rupert
 - Prince Rupert reported 134 unloads, now behind last week's unloads after four days by 100 unloads.
 - Loads on wheels now above 1,000 cars - currently at 1,510 cars.
 - There are 150 cars west of Jasper en route to Prince Rupert.
 - There are 50 cars on site at Prince Rupert with 150 cars arriving at the port in the last 24 hours.
- Thunder Bay
 - 334 unloads were reported at Thunder Bay yesterday. Four days in Week 46 unloads are tracking ahead of last week's pace by 50 unloads.
 - There are 200 cars on site at Thunder Bay with zero cars arriving at the port in the prior 24 hours.
 - There are 250 cars en route to Thunder Bay from Winnipeg and east.
 -

Daily Loads on Wheels - 6/13/2019

	E Canada	Prince Rupert	Thunder Bay	USA/MEX	Vancouver	Total
CN	511	1,510	157	153	2,164	4,495
CP	37		818	117	3,096	4,068
Short Line	4				16	20
US Rail				103		103
	552	1,510	975	373	5,276	8,686

Change in Loads on Wheels - Prior 24 Hours

	E Canada	Prince Rupert	Thunder Bay	USA/MEX	Vancouver	Total
CN	48	78	-91	-29	-515	-509
CP	-10		-15	-3	37	9
Short Line	0				-1	-1
US Rail				15		15
	38	78	-106	-17	-479	-486

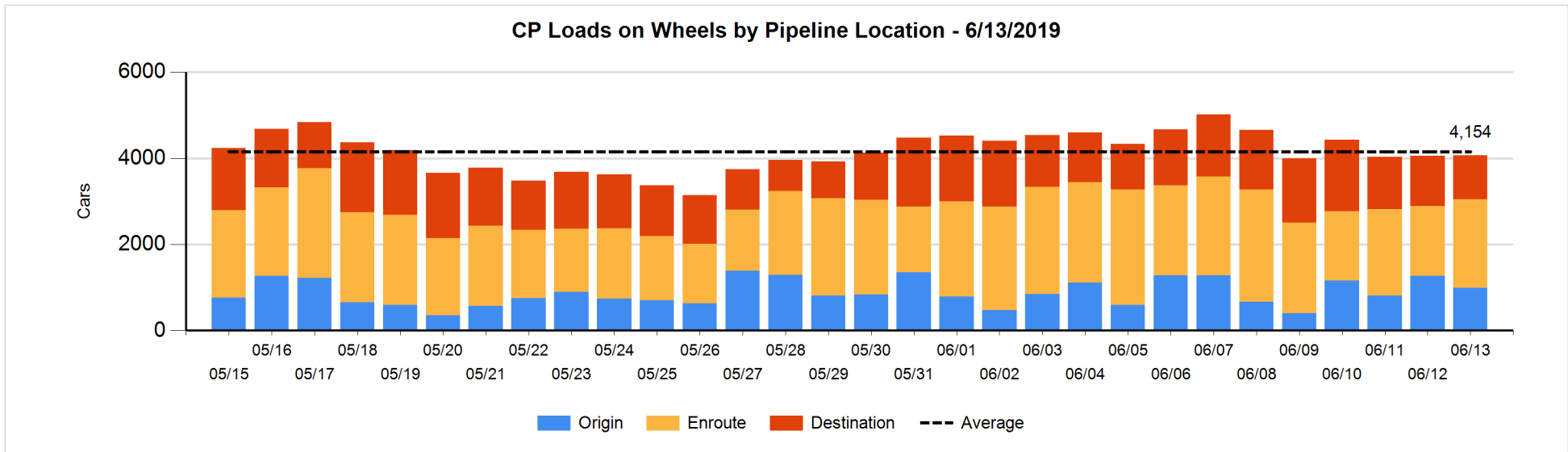
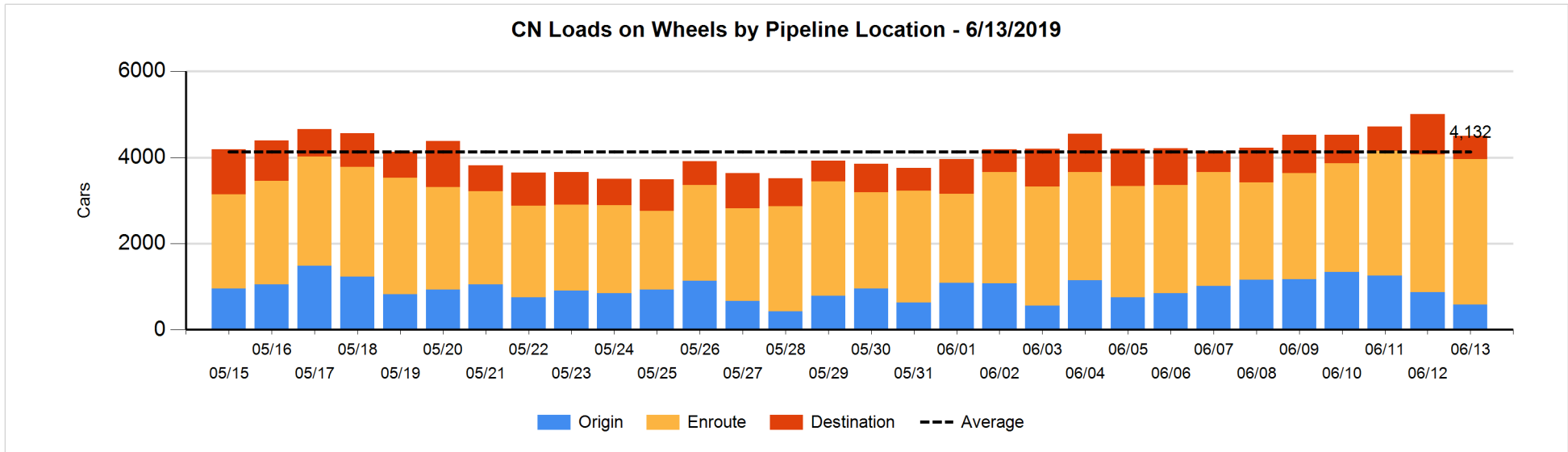


Daily Loads on Wheels By Pipeline Location - 6/13/2019

	E Canada	Prince Rupert	Thunder Bay	USA/MEX	Vancouver	Total
CN						
Origin	28	211	32	8	308	587
Enroute	413	1,257	49	117	1,539	3,375
Destination	70	42	76	28	317	533
	511	1,510	157	153	2,164	4,495
CP						
Origin			196	35	755	986
Enroute	20		499	57	1,479	2,055
Destination	17		123	25	862	1,027
	37		818	117	3,096	4,068
US Rail / Short Line						
Origin						
Enroute				88		88
Destination	4			15	16	35
	4			103	16	123

Change in Daily Loads on Wheels By Pipeline Location - Prior 24 Hours

	E Canada	Prince Rupert	Thunder Bay	USA/MEX	Vancouver	Total
CN						
Origin	1	-47	32	-1	-270	-285
Enroute	101	86	0	-9	-3	175
Destination	-54	39	-123	-19	-242	-399
	48	78	-91	-29	-515	-509
CP						
Origin	-1		85	-39	-330	-285
Enroute	-1		111	16	307	433
Destination	-8		-211	20	60	-139
	-10		-15	-3	37	9
US Rail / Short Line						
Origin						
Enroute				13		13
Destination	0			2	-1	1
	0			15	-1	14

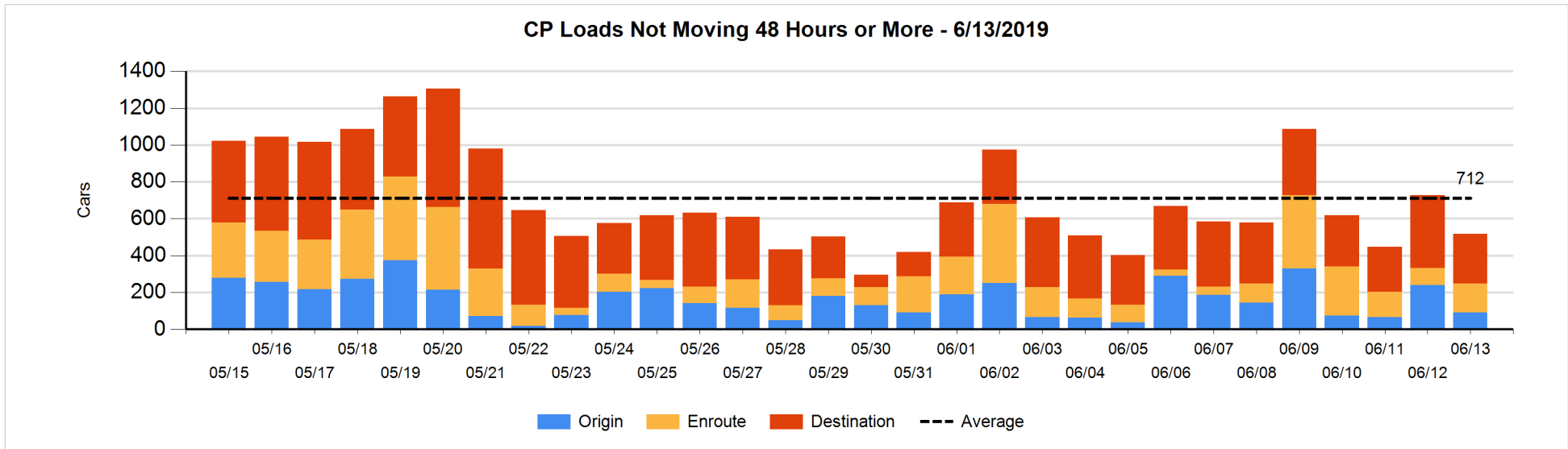
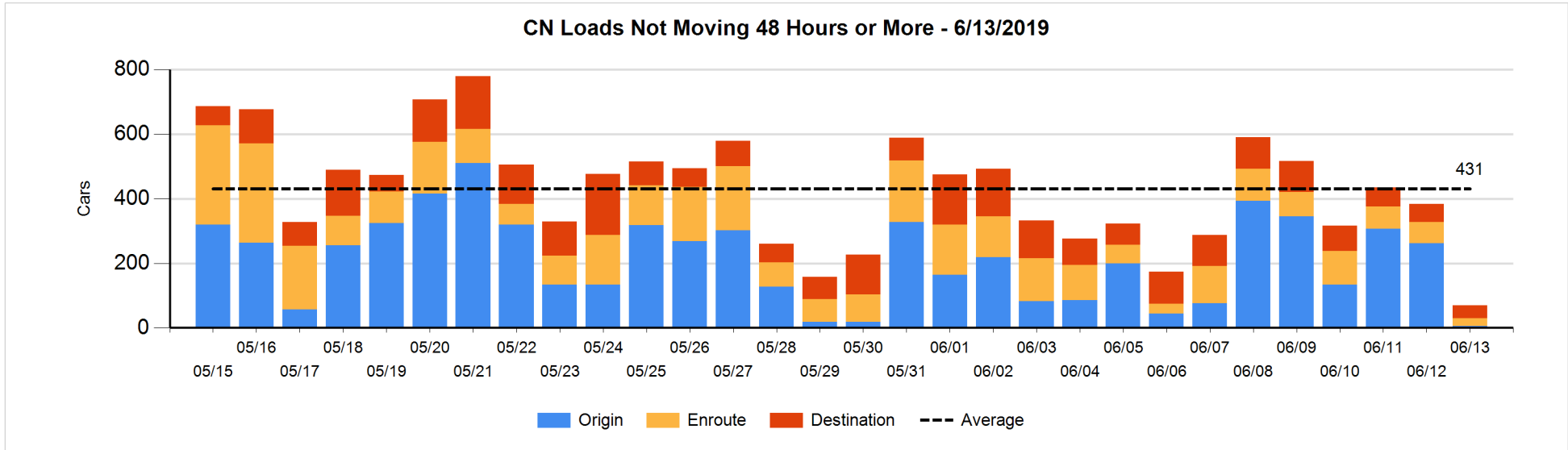


Loads Not Moving 48 Hours or More - 6/13/2019

	E Canada	Prince Rupert	Thunder Bay	USA/MEX	Vancouver	Total
CN						
Origin		1			5	6
Enroute	14	3		5	2	24
Destination	22	3	1	4	9	39
	36	7	1	9	16	69
CP						
Origin				34	58	92
Enroute			121	2	32	155
Destination	2		66	2	199	269
	2		187	38	289	516
US Rail / Short Line						
Origin						
Enroute				30		30
Destination	3			8	6	17
	3			38	6	47

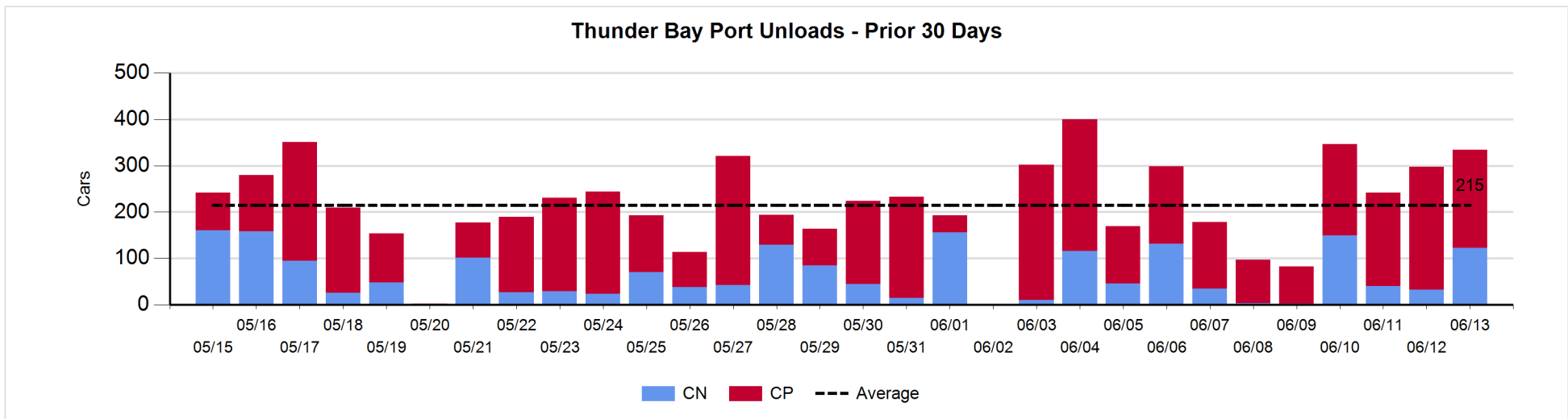
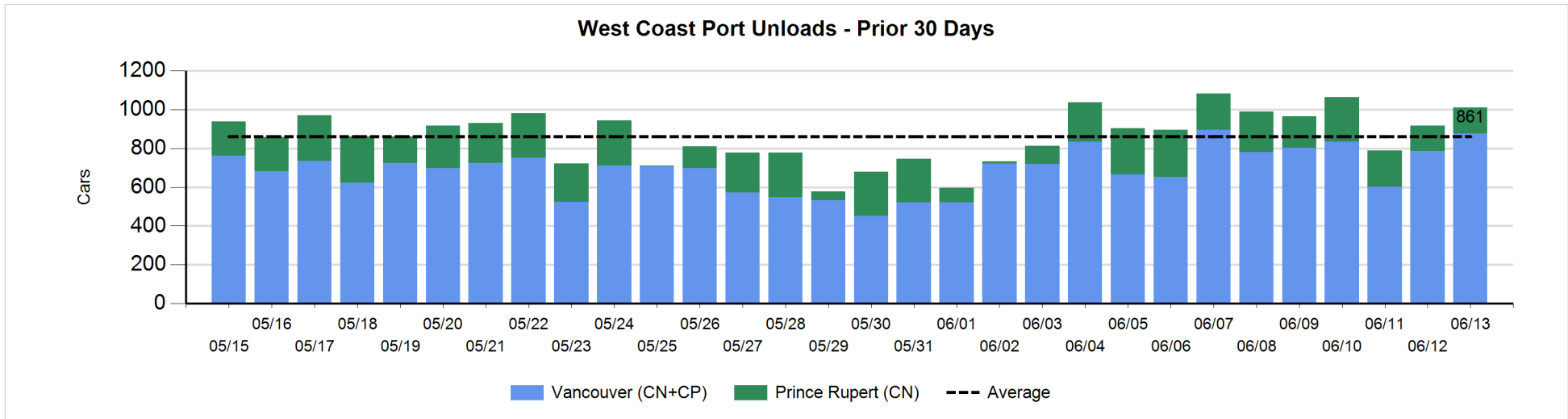
Change in Loads Not Moving 48 Hours or More - 6/13/2019

	E Canada	Prince Rupert	Thunder Bay	USA/MEX	Vancouver	Total
CN						
Origin		-54		-1	-201	-256
Enroute	-14	-27		-1	0	-42
Destination	7	0	-22	-1	-1	-17
	-7	-81	-22	-3	-202	-315
CP						
Origin			-111	-40	3	-148
Enroute	-2		118	2	-56	62
Destination	2		-136	2	6	-126
	0		-129	-36	-47	-212
US Rail / Short Line						
Origin						
Enroute				-1		-1
Destination	0			5	-1	4
	0			4	-1	3



Port Unloads - 6/13/2019

	Prince Rupert	Vancouver	West Coast Total	Thunder Bay	Total
CN	134	475	609	123	732
CP		402	402	211	613
	134	877	1,011	334	1,345



Port Terminal Status

Vancouver

Daily Activity for 6/13/2019

	Cars Arrived	Cars Received in Interchange	Cars Delivered in Interchange	Cars Placed for Unloading	Loads on Wheels at Destination As of 6/13/2019
CN	170	214	280	313	317
CP	528	279	217	406	862
SRY		4		5	16

Port Unloads

	06/13	06/12	Week To Date	Last Week
CN	475	337	1,311	2,064
CP	402	450	1,790	3,286
SRY	5	7	18	93

Age Profile of Loaded Cars Waiting Placement for Unloading

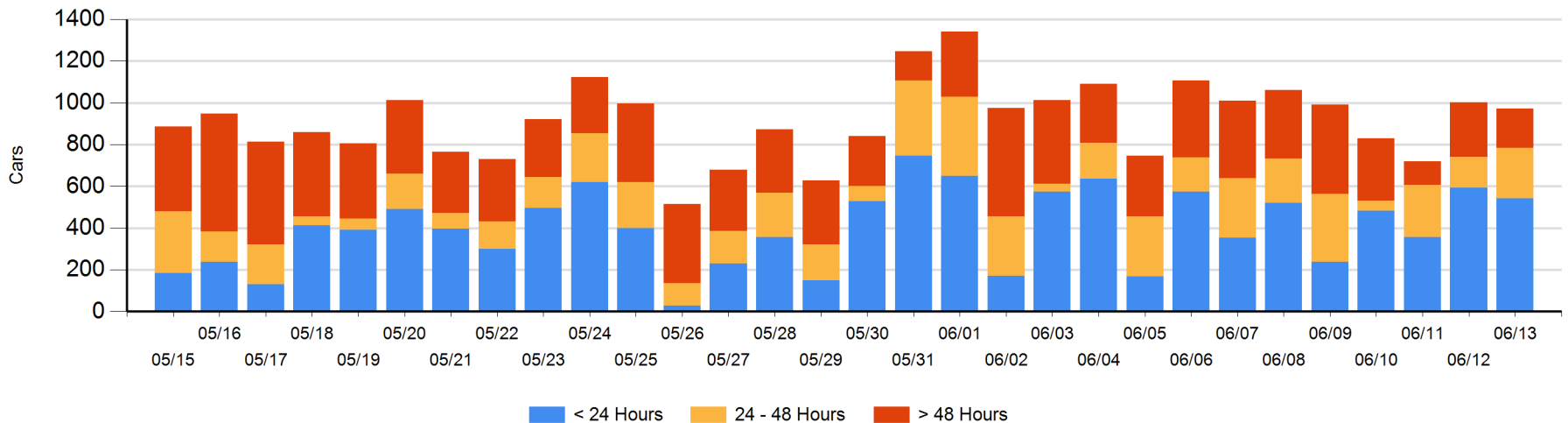
Today

	< 24 Hrs	24 - 48 Hrs	> 48-72 Hrs	> 72 Hrs	Total On Hand
CN	170	9	49	8	236
CP	372	233	51	81	737
SRY					0

Change in Last 24 Hours

	< 24 Hrs	24-48 Hrs	48 - 72 Hrs	> 72 Hrs
CN	-90	-67	14	-10
CP	39	161	-75	-2
SRY				

Loaded Cars on Hand Vancouver Waiting for Placement - Last 30 Days All Railways



Port Terminal Status

Prince Rupert

Daily Activity for 6/13/2019

	Cars Arrived	Cars Received in Interchange	Cars Delivered in Interchange	Cars Placed for Unloading	Loads on Wheels at Destination As of 6/13/2019
CN	152			173	42

Port Unloads

	06/13	06/12	Week To Date	Last Week
CN	134	130	681	1,337

Age Profile of Loaded Cars Waiting Placement for Unloading

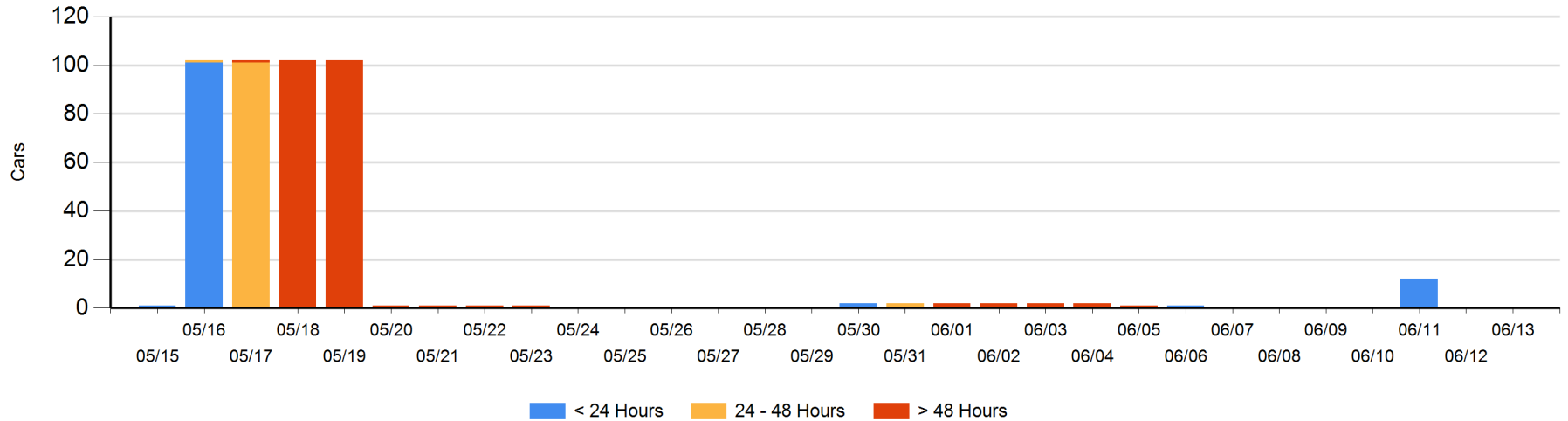
Today

	< 24 Hrs	24 - 48 Hrs	> 48-72 Hrs	> 72 Hrs	Total On Hand
CN					0

Change in Last 24 Hours

	< 24 Hrs	24-48 Hrs	48 - 72 Hrs	> 72 Hrs
CN				

Loaded Cars on Hand Prince Rupert Waiting for Placement - Last 30 Days All Railways



Port Terminal Status

Thunder Bay

Daily Activity for 6/13/2019

	Cars Arrived	Cars Received in Interchange	Cars Delivered in Interchange	Cars Placed for Unloading	Loads on Wheels at Destination As of 6/13/2019
CN				22	76
CP				211	123

Port Unloads

	06/13	06/12	Week To Date	Last Week
CN	123	32	344	345
CP	211	265	875	1,182

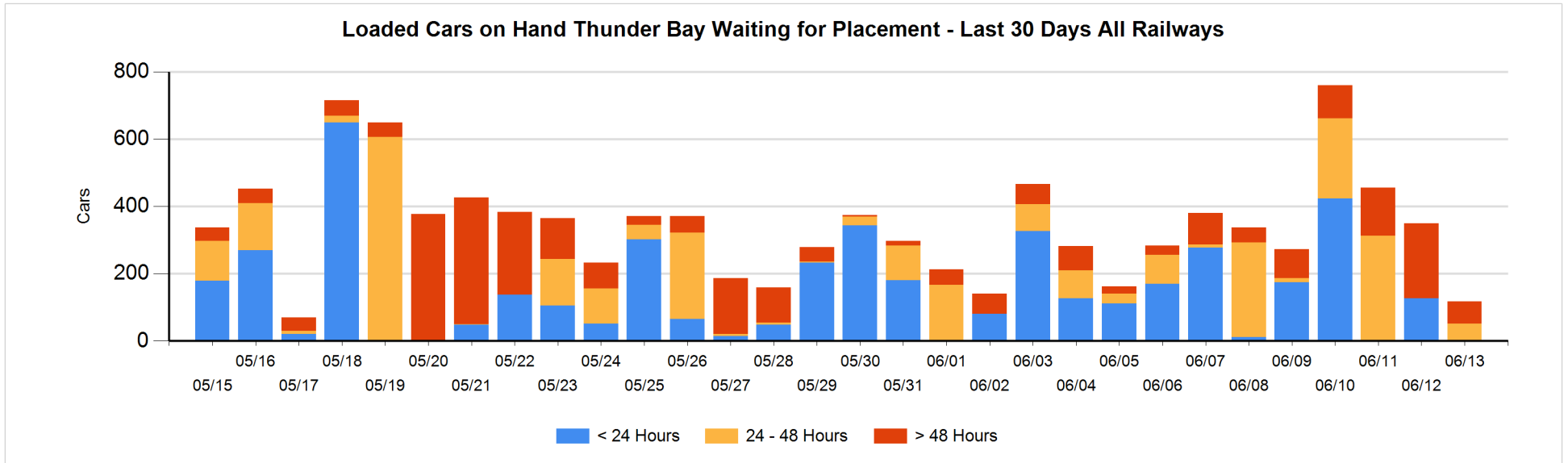
Age Profile of Loaded Cars Waiting Placement for Unloading

Today

	< 24 Hrs	24 - 48 Hrs	> 48-72 Hrs	> 72 Hrs	Total On Hand
CN		5			5
CP		46		66	112

Change in Last 24 Hours

	< 24 Hrs	24-48 Hrs	48 - 72 Hrs	> 72 Hrs
CN	-5	5	-22	
CP	-121	46	-93	-43



Measurement Definitions

Loads on Wheels	<p>Count of loaded rail cars including all rail cars that have been released loaded at origin and have not been reported by the railway as unloaded at destination.</p> <p>Counts include all rail cars (hopper cars and boxcars) moving within a pipeline.</p>
Loads Not Moving	<p>Loaded rail cars for which the railways have not reported a movement event for 48 hours or more whether the rail car is at origin, enroute or at destination.</p>
Port Unloads	<p>Count of rail cars reported by railways as unloaded at the western port destinations of Vancouver, Prince Rupert and Thunder Bay.</p> <p>Unload counts include all rail cars (hopper cars and boxcars) unloaded by all receivers including major port terminals, transloaders and other receivers.</p>
Cars Arrived	<p>Count of rail cars reported as arrived at the destination railway terminal.</p>
Cars Received in Interchange	<p>Count of rail cars received in interchange by each railway within a destination railway terminal. Interchange activity is tracked for the Vancouver and Thunder Bay pipelines as applicable.</p>
Cars Delivered in Interchange	<p>Count of rail cars delivered in interchange by each railway within a destination railway terminal. Interchange activity is tracked for the Vancouver and Thunder Bay pipelines as applicable.</p>
Cars Placed for Unloading	<p>Count of rail cars reported by the railways as placed loaded at the receiver's facility for unloading.</p>
Loads on Wheels at Destination	<p>Count of rail cars that remain under load within the destination railway terminal including rail cars that have been reported as placed for unloading but not yet reported as unloaded.</p>
Waiting Placement for Unloading	<p>Count of rail cars that have been reported as arrived at the destination railway terminal but not reported as placed for unloading by the railway.</p> <p>For the Ports of Vancouver, Prince Rupert and Thunder Bay the count of rail cars waiting placement for unloading is categorized by age – i.e. the elapsed time from arrival at destination to the current report date.</p>