

SPEED READ

- Loads on wheels decreased overnight, marking reduced CP traffic offset by an increase in CN volumes. On a net basis, volumes decreased due to reduced volumes in the Vancouver, Prince Rupert and USA/MEX corridors offset by higher volumes in the E. Canada and Thunder Bay corridors.
- Network fluidity deteriorated overnight, led by an increase in idle car counts on CN by 207% (+358) offset by a decline in idle car counts on CP by 34% (-264). The total count of cars for 4+ days on both railways gained 16% (+30) overnight - now at 212 cars.
- Week 46 unloads finished behind prior week's performance by 350 unloads, marking reduced unloads at Vancouver and Prince Rupert, Thunder Bay offset by improved week over week performance at Thunder Bay.

Loads on Wheels

- Loads on wheels decreased 5% (-454) overnight, due to reduced volumes on CP offset by higher traffic on CN - combined total at 8,322 and 1% below the trailing 30-day average.
- On a net basis, the decline in loads on wheels indicates reduced volumes in the Vancouver, Prince Rupert and USA/MEX corridors offset by higher volumes in the E. Canada and Thunder Bay corridors.
- CN volumes gained 3% (+135) overnight and have now increased for the third consecutive day, with higher traffic in the Vancouver, Thunder Bay and E. Canada corridors offset by lower volumes in the Prince Rupert and USA/MEX corridors. System wide CN loads on wheels currently at 4,805 and 15% above the trailing 30-day average.
- CP volumes decreased significantly by 15% (-586) overnight, driven by a decline in traffic across all corridors - Vancouver, Thunder Bay, USA/MEX and E. Canada. CP system wide loads on wheels presently at 3,405 and 16% below the trailing 30-day average.
- Vancouver currently at 4,652, fell 8% (-428) overnight, now 6% below the trailing 30-day average.
- The Prince Rupert pipeline presently at 1,281, decreased for the third consecutive day, down 3% (-39) overnight, and 8% above the trailing 30-day average.
- Thunder Bay volumes increased for the third consecutive day, up (+4) overnight - presently at 1,543 and 25% above the trailing 30-day average, with 71% of traffic moving on CP.

Hopper Car Rationing

- CN rationed 25 hopper cars in week 45.

Loads Not Moving

- **The count of cars not moving for 48+ hours gained for the third consecutive day, up 10% (+94) overnight, marking higher counts on CN offset by reduced counts on CP. Idle car counts now at 1,051 and 2% below the trailing 30-day average.**
- CN
 - **The count of idle cars for 48+ hours gained significantly by 207% (+358) overnight and have now increased for the third consecutive day - now at 531 cars.**
 - The number of cars idle for 4+ days rose significantly by 128% (+37) overnight - presently at 66 cars.
 - The count of cars not moving for 7+ days remained unchanged (0) overnight - now at 13 cars, the lowest seen in the last 30 days.
 - Vancouver represents 68% of all idle cars.
 - In total 50% of all idle cars are dwelling at origin locations.
- CP
 - **CP idle car counts for 48+ hours decreased 34% (-264) overnight - presently at 520 cars.**

- The number of cars idle for 4+ days decreased 5% (-7) overnight - now at 146 cars.
- The number of cars idle for 7+ days gained for the fourth consecutive day, up 8% (+3) overnight - currently at 41 cars.
- Vancouver accounts for 78% of all idle cars.
- In total 24% of all idle cars are dwelling at origin locations.

Port Performance

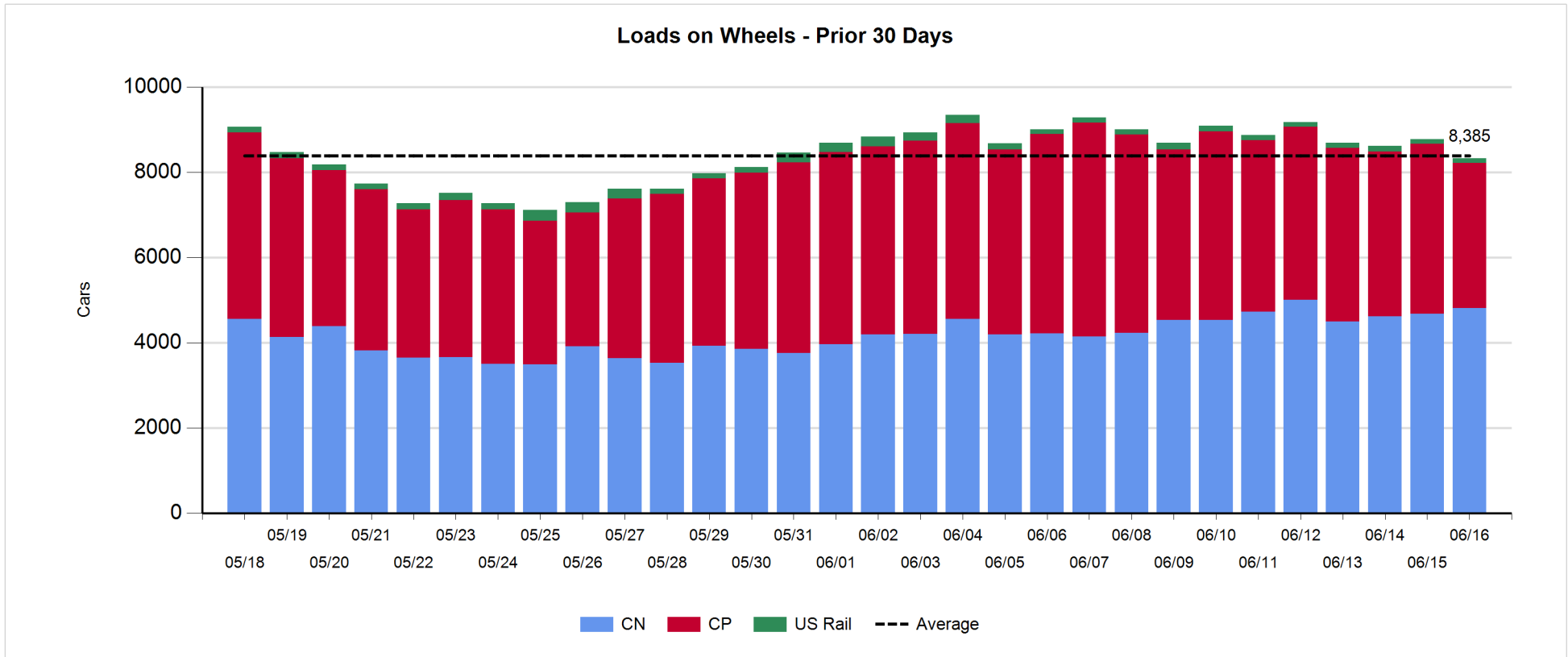
- CN and CP reported a total of 920 cars unloaded at the three major ports, now 13% below the trailing 30-day average. Week 46 unloads finished behind last week's pace by 350 unloads, marking reduced unloads at Vancouver and Prince Rupert, Thunder Bay offset by higher unloads at Thunder Bay.
- Vancouver
 - 625 unloads reported by CN and CP at the Port of Vancouver; CN - 147 and CP - 478. Week 46 unloads ended behind last week's performance by 200 unloads.
 - There are more than 1,450 cars on site at Vancouver with 950 cars arriving at the port in the last 24 hours.
 - CN and CP have 1,350 cars in British Columbia en route to Vancouver, with more than 450 cars at Kamloops and west, and 51% of traffic moving on CP.
- Prince Rupert
 - Prince Rupert reported 138 unloads, finished behind last week's unloads by more than 150 unloads.
 - Loads on wheels now above 1,000 cars - presently at 1,281 cars.
 - There are less than 550 cars west of Jasper en route to Prince Rupert.
 - There are more than 250 cars on site at Prince Rupert with 300 cars arriving at the port in the last 24 hours.
- Thunder Bay
 - 157 unloads were reported at Thunder Bay yesterday. Week 46 unloads at 1,527 matched the prior week.
 - There are more than 550 cars on site at Thunder Bay with 450 cars arriving at the port in the prior 24 hours.
 - There are less than 250 cars en route to Thunder Bay from Winnipeg and east.

Daily Loads on Wheels - 6/16/2019

	E Canada	Prince Rupert	Thunder Bay	USA/MEX	Vancouver	Total
CN	523	1,281	441	124	2,436	4,805
CP	25		1,102	69	2,209	3,405
Short Line	2				7	9
US Rail				103		103
	550	1,281	1,543	296	4,652	8,322

Change in Loads on Wheels - Prior 24 Hours

	E Canada	Prince Rupert	Thunder Bay	USA/MEX	Vancouver	Total
CN	35	-39	39	-2	102	135
CP	0		-35	-21	-530	-586
Short Line	-2				0	-2
US Rail				-1		-1
	33	-39	4	-24	-428	-454

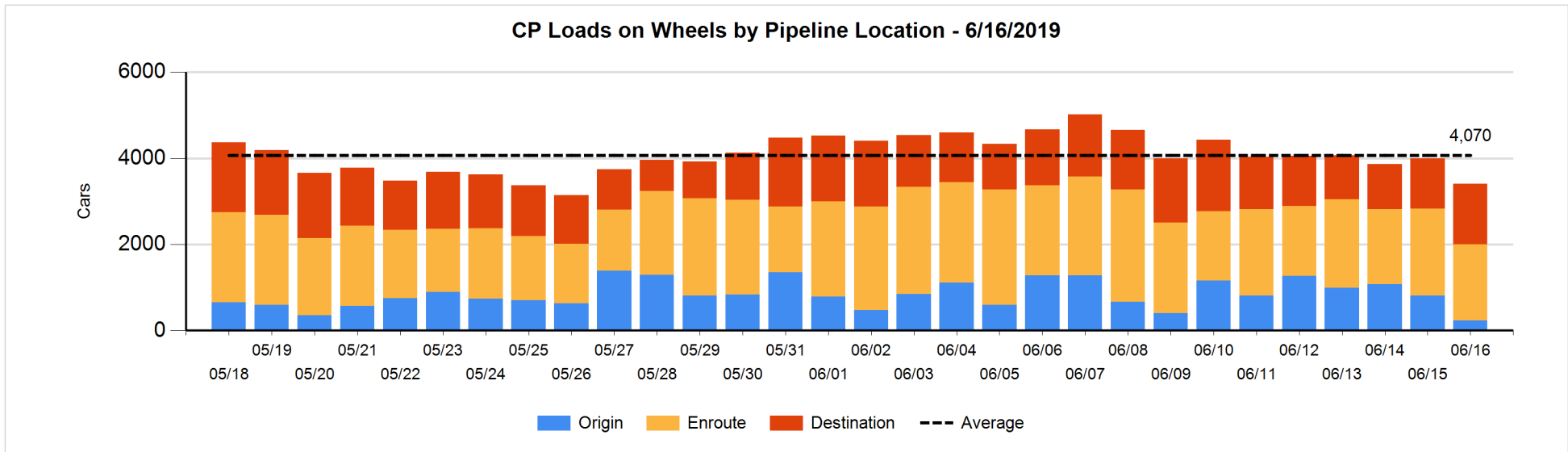
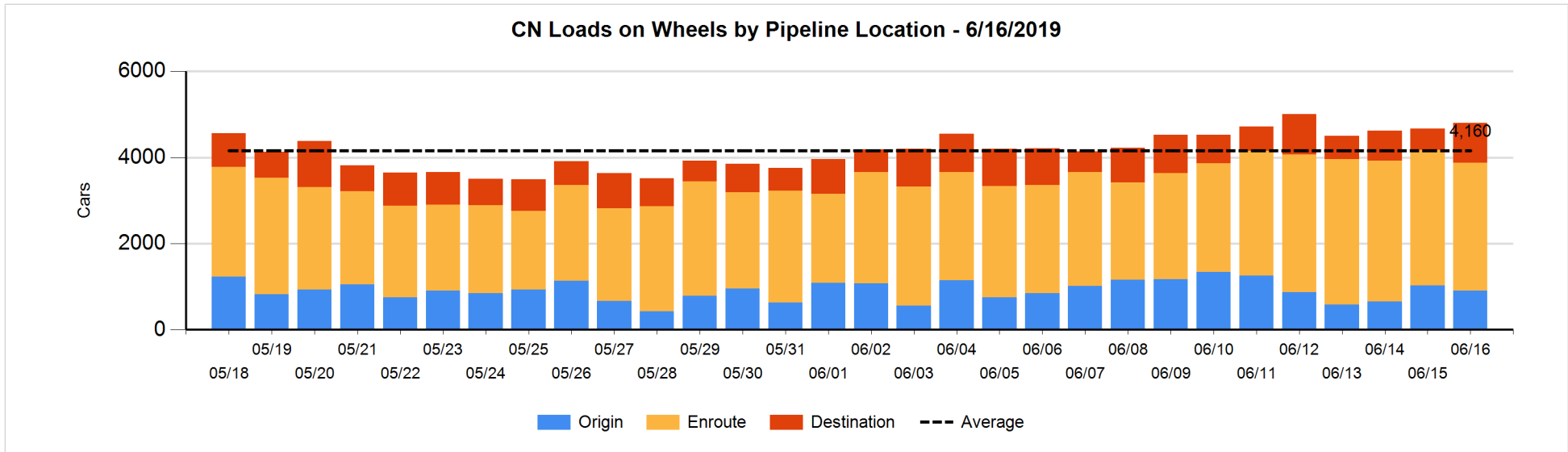


Daily Loads on Wheels By Pipeline Location - 6/16/2019

	E Canada	Prince Rupert	Thunder Bay	USA/MEX	Vancouver	Total
CN						
Origin	124	100	179		499	902
Enroute	375	916	145	109	1,432	2,977
Destination	24	265	117	15	505	926
	523	1,281	441	124	2,436	4,805
CP						
Origin	5		112	35	86	238
Enroute	20		543	34	1,162	1,759
Destination			447		961	1,408
	25		1,102	69	2,209	3,405
US Rail / Short Line						
Origin						
Enroute				71		71
Destination	2			32	7	41
	2			103	7	112

Change in Daily Loads on Wheels By Pipeline Location - Prior 24 Hours

	E Canada	Prince Rupert	Thunder Bay	USA/MEX	Vancouver	Total
CN						
Origin	70	41	-47	-4	-190	-130
Enroute	54	-232	-3	3	13	-165
Destination	-89	152	89	-1	279	430
	35	-39	39	-2	102	135
CP						
Origin	0		0	0	-577	-577
Enroute	0		-241	-21	8	-254
Destination			206		39	245
	0		-35	-21	-530	-586
US Rail / Short Line						
Origin						
Enroute				1		1
Destination	-2			-2	0	-4
	-2			-1	0	-3

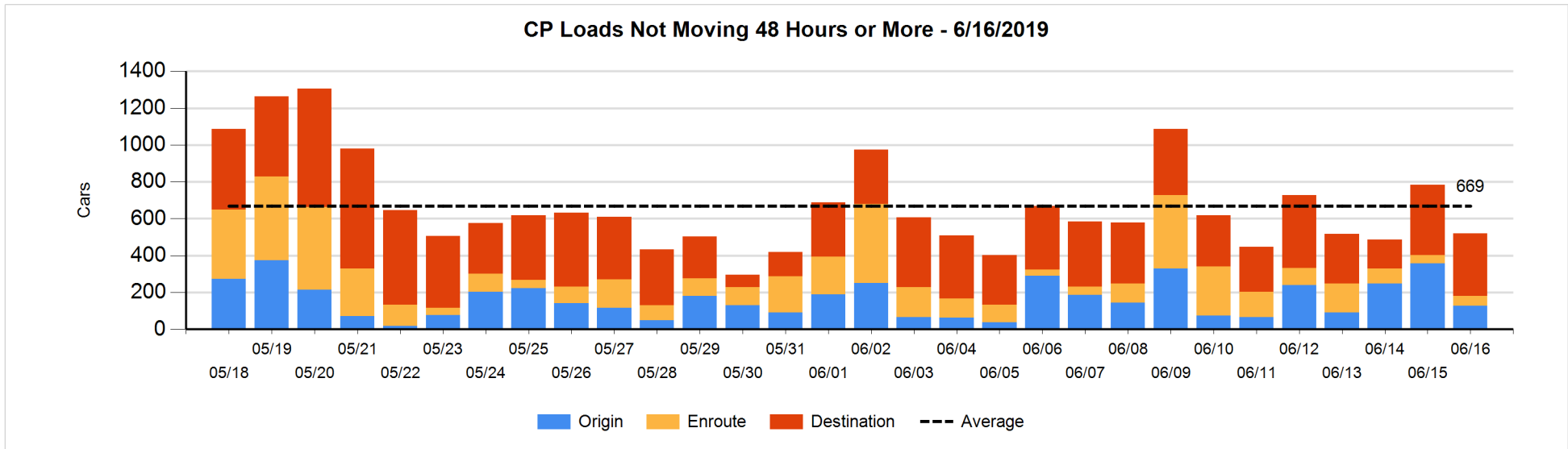
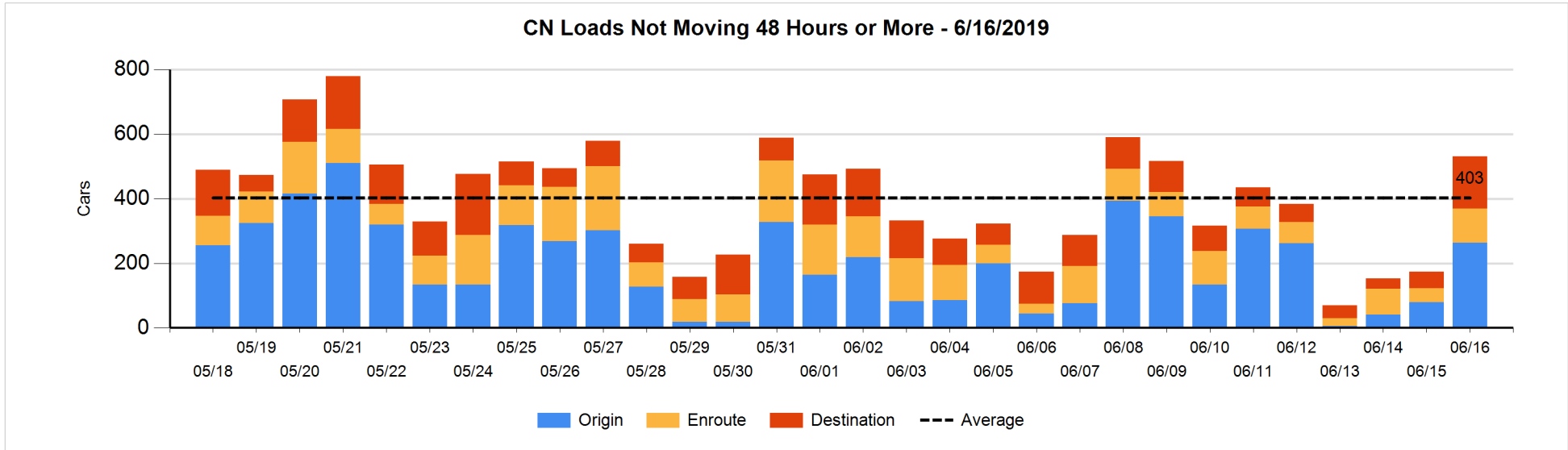


Loads Not Moving 48 Hours or More - 6/16/2019

	E Canada	Prince Rupert	Thunder Bay	USA/MEX	Vancouver	Total
CN						
Origin		1	32		230	263
Enroute	82	6		5	13	106
Destination	16	2	13	14	117	162
	98	9	45	19	360	531
CP						
Origin	5			35	86	126
Enroute	3		11	2	39	55
Destination			57		282	339
	8		68	37	407	520
US Rail / Short Line						
Origin						
Enroute				35		35
Destination	2			17	3	22
	2			52	3	57

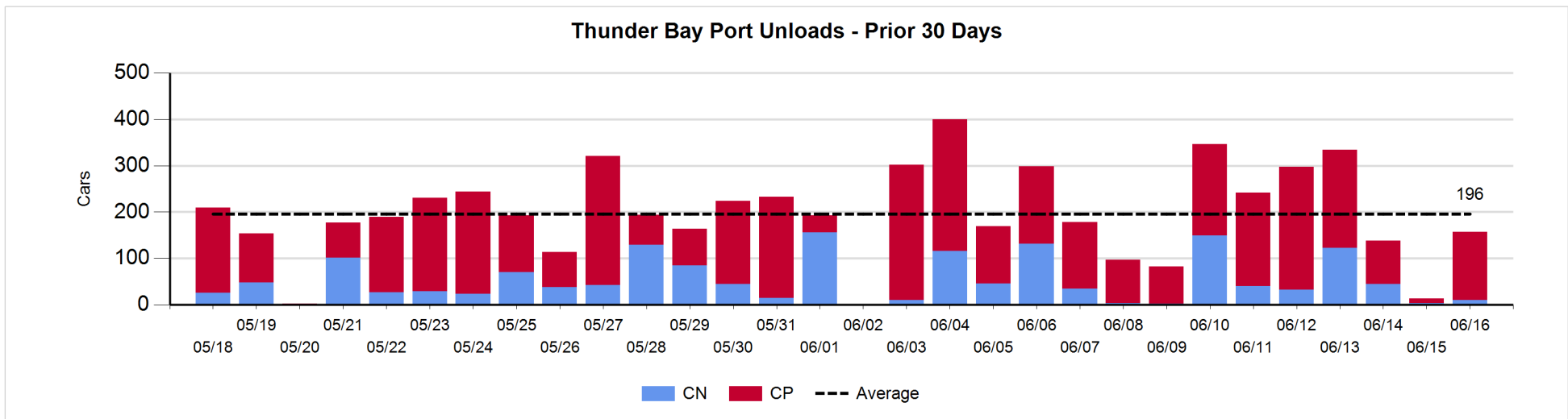
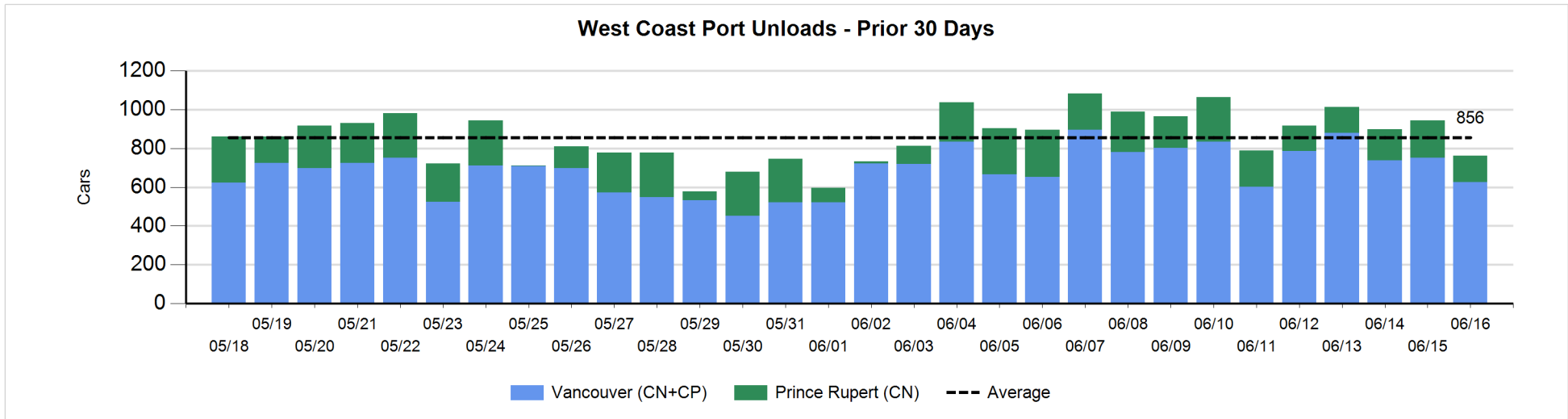
Change in Loads Not Moving 48 Hours or More - 6/16/2019

	E Canada	Prince Rupert	Thunder Bay	USA/MEX	Vancouver	Total
CN						
Origin	-28	0	0	-4	216	184
Enroute	48	2		2	10	62
Destination	9	0	-15	5	113	112
	29	2	-15	3	339	358
CP						
Origin	5			1	-237	-231
Enroute	0		-4	1	13	10
Destination			52		-95	-43
	5		48	2	-319	-264
US Rail / Short Line						
Origin						
Enroute				3		3
Destination	-2			6	2	6
	-2			9	2	9



Port Unloads - 6/16/2019

	Prince Rupert	Vancouver	West Coast Total	Thunder Bay	Total
CN	138	147	285	10	295
CP		478	478	147	625
	138	625	763	157	920



Port Terminal Status

Vancouver

Daily Activity for 6/16/2019

	Cars Arrived	Cars Received in Interchange	Cars Delivered in Interchange	Cars Placed for Unloading	Loads on Wheels at Destination As of 6/16/2019
CN	341	152	104	241	511
CP	602	104	156	435	961
SRY		4			7

Port Unloads

	06/16	06/15	Week To Date	Last Week
CN	147	343	2,106	2,064
CP	478	408	3,113	3,286
SRY		5	32	93

Age Profile of Loaded Cars Waiting Placement for Unloading

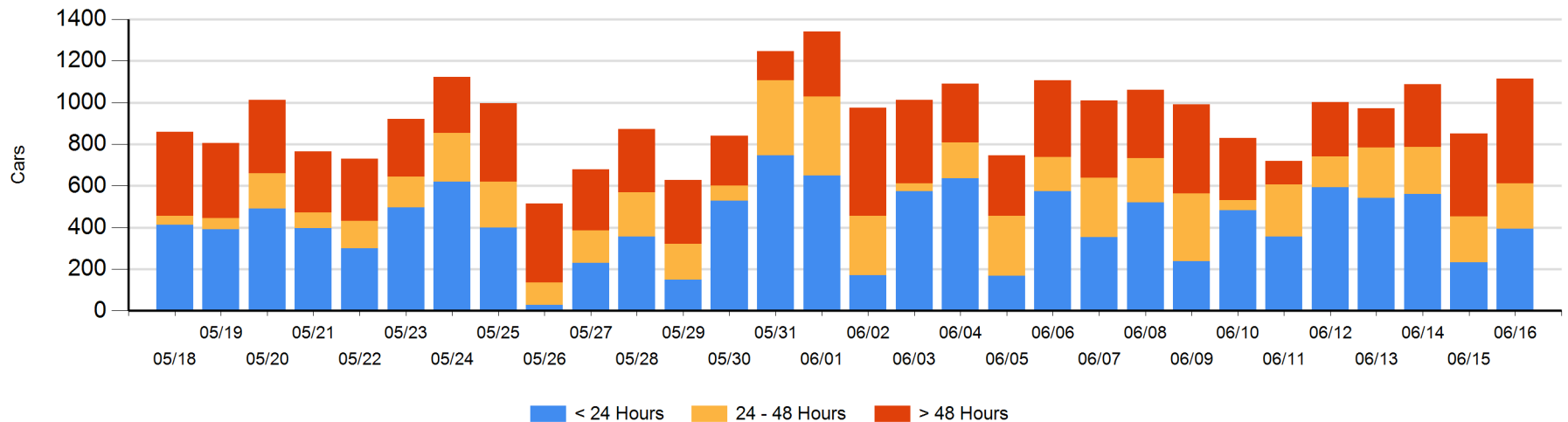
Today

	< 24 Hrs	24 - 48 Hrs	> 48-72 Hrs	> 72 Hrs	Total On Hand
CN	118	27	118	125	388
CP	275	192	48	212	727
SRY					0

Change in Last 24 Hours

	< 24 Hrs	24-48 Hrs	48 - 72 Hrs	> 72 Hrs
CN	90	-91	46	68
CP	70	89	-41	33
SRY				

Loaded Cars on Hand Vancouver Waiting for Placement - Last 30 Days All Railways



Port Terminal Status

Prince Rupert

Daily Activity for 6/16/2019

	Cars Arrived	Cars Received in Interchange	Cars Delivered in Interchange	Cars Placed for Unloading	Loads on Wheels at Destination As of 6/16/2019
CN	290			290	265

Port Unloads

	06/16	06/15	Week To Date	Last Week
CN	138	192	1,171	1,337

Age Profile of Loaded Cars Waiting Placement for Unloading

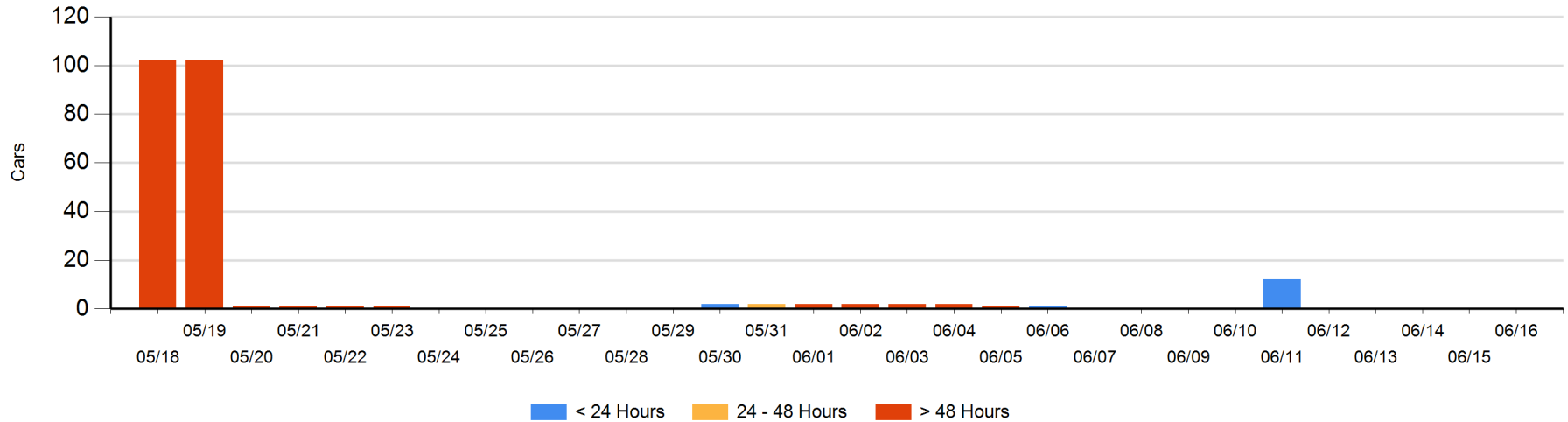
Today

	< 24 Hrs	24 - 48 Hrs	> 48-72 Hrs	> 72 Hrs	Total On Hand
CN					0

Change in Last 24 Hours

	< 24 Hrs	24-48 Hrs	48 - 72 Hrs	> 72 Hrs
CN				

Loaded Cars on Hand Prince Rupert Waiting for Placement - Last 30 Days All Railways



Port Terminal Status

Thunder Bay

Daily Activity for 6/16/2019

	Cars Arrived	Cars Received in Interchange	Cars Delivered in Interchange	Cars Placed for Unloading	Loads on Wheels at Destination As of 6/16/2019
CN	99				117
CP	353			42	447

Port Unloads

	06/16	06/15	Week To Date	Last Week
CN	10	3	402	345
CP	147	10	1,125	1,182

Age Profile of Loaded Cars Waiting Placement for Unloading

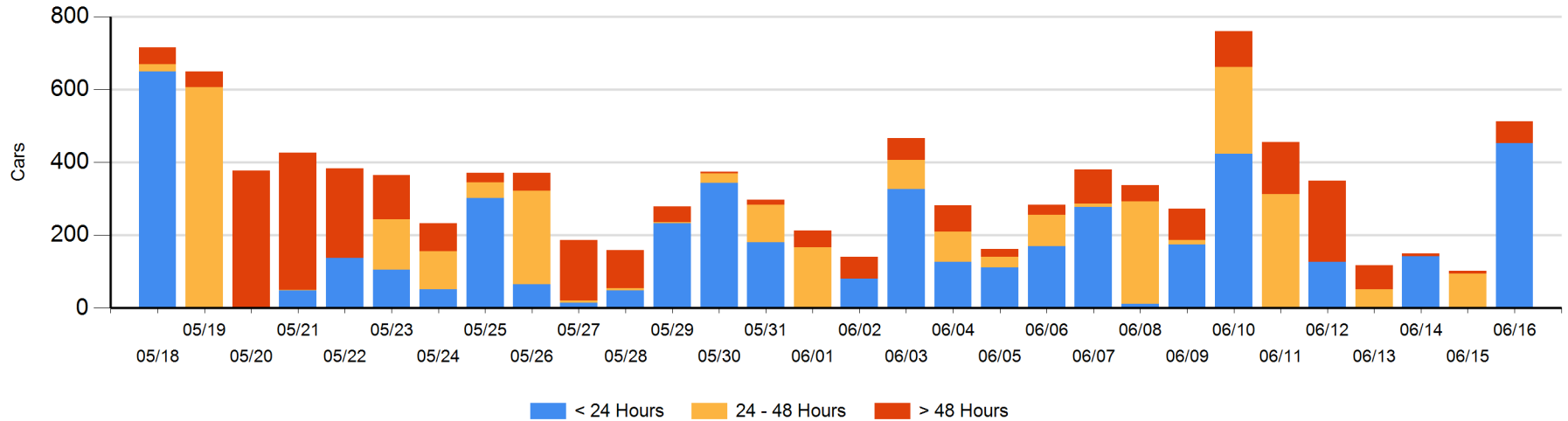
Today

	< 24 Hrs	24 - 48 Hrs	> 48-72 Hrs	> 72 Hrs	Total On Hand
CN	99			5	104
CP	353		52	3	408

Change in Last 24 Hours

	< 24 Hrs	24-48 Hrs	48 - 72 Hrs	> 72 Hrs
CN	99			0
CP	353	-94	52	0

Loaded Cars on Hand Thunder Bay Waiting for Placement - Last 30 Days All Railways



Measurement Definitions

Loads on Wheels	<p>Count of loaded rail cars including all rail cars that have been released loaded at origin and have not been reported by the railway as unloaded at destination.</p> <p>Counts include all rail cars (hopper cars and boxcars) moving within a pipeline.</p>
Loads Not Moving	<p>Loaded rail cars for which the railways have not reported a movement event for 48 hours or more whether the rail car is at origin, enroute or at destination.</p>
Port Unloads	<p>Count of rail cars reported by railways as unloaded at the western port destinations of Vancouver, Prince Rupert and Thunder Bay.</p> <p>Unload counts include all rail cars (hopper cars and boxcars) unloaded by all receivers including major port terminals, transloaders and other receivers.</p>
Cars Arrived	<p>Count of rail cars reported as arrived at the destination railway terminal.</p>
Cars Received in Interchange	<p>Count of rail cars received in interchange by each railway within a destination railway terminal. Interchange activity is tracked for the Vancouver and Thunder Bay pipelines as applicable.</p>
Cars Delivered in Interchange	<p>Count of rail cars delivered in interchange by each railway within a destination railway terminal. Interchange activity is tracked for the Vancouver and Thunder Bay pipelines as applicable.</p>
Cars Placed for Unloading	<p>Count of rail cars reported by the railways as placed loaded at the receiver's facility for unloading.</p>
Loads on Wheels at Destination	<p>Count of rail cars that remain under load within the destination railway terminal including rail cars that have been reported as placed for unloading but not yet reported as unloaded.</p>
Waiting Placement for Unloading	<p>Count of rail cars that have been reported as arrived at the destination railway terminal but not reported as placed for unloading by the railway.</p> <p>For the Ports of Vancouver, Prince Rupert and Thunder Bay the count of rail cars waiting placement for unloading is categorized by age – i.e. the elapsed time from arrival at destination to the current report date.</p>