

## SPEED READ

- Loads on wheels fell overnight, reflecting a decline in CN traffic offset by higher CP volumes. On a net basis, volumes decreased due to lower traffic across all corridors other than E. Canada.
- Network fluidity deteriorated overnight, led by an increase in idle car counts on CP by 79% (+324) offset by a decline in idle car counts on CN by 10% (-65). The total count of cars for 4+ days on both railways increased significantly by 66% (+211) overnight and have now increased for the fourth consecutive day - presently at 533 cars.
- Two days in Week 47 unloads now ahead of prior week's performance by more than 200 unloads, marking improved week over week performance at Vancouver and Prince Rupert offset by lower unloads at Thunder Bay.

---

## Loads on Wheels

- Loads on wheels decreased for the third consecutive day, down 3% (-261) overnight, due to reduced traffic on CN offset by higher traffic on CP - combined total at 7,976 and 4% below the trailing 30-day average.
- On a net basis, the decline in loads on wheels reflects lower traffic across all corridors other than E. Canada.
- CN volumes decreased significantly by 10% (-519) overnight, with lower traffic across all corridors other than USA/MEX. System wide CN loads on wheels currently at 4,466 and 7% above the trailing 30-day average.
- CP volumes increased 9% (+286) overnight, driven by a rise in traffic across all corridors other than USA/MEX. CP system wide loads on wheels currently at 3,360 and 16% below the trailing 30-day average.
- Vancouver currently at 4,508, fell 2% (-77) overnight and have now decreased for the third consecutive day, now 8% below the trailing 30-day average.
- The Prince Rupert pipeline currently at 1,112, fell significantly by 18% (-239) overnight, and 6% below the trailing 30-day average.
- Thunder Bay volumes fell marginally by (-5) overnight - currently at 1,437 and 15% above the trailing 30-day average, with 70% of traffic moving on CP.

## Hopper Car Rationing

- CN rationed 25 hopper cars in week 45 with no rationing yet reported for week 46.

## Loads Not Moving

- **The count of cars not moving for 48+ hours increased 25% (+259) overnight, reflecting higher counts on CP offset by lower counts on CN. Idle car counts currently at 1,298 and 25% above the trailing 30-day average.**
- CN
  - **The count of idle cars for 48+ hours fell 10% (-65) overnight - presently at 563 cars.**
  - The number of cars idle for 4+ days increased significantly by 271% (+203) overnight and have now increased for the fourth consecutive day - now at 278 cars.
  - The count of cars not moving for 7+ days fell 36% (-4) overnight - currently at 07 cars, the lowest seen in the last 30 days.
  - Vancouver represents 51% of all idle cars.
  - In total 38% of all idle cars are dwelling at origin locations.
- CP
  - **CP idle car counts for 48+ hours increased significantly by 79% (+324) overnight - currently at 735 cars.**
  - The number of cars idle for 4+ days increased 3% (+9) overnight - presently at 255 cars.
  - The number of cars idle for 7+ days remained unchanged (0) overnight - currently at 45 cars.

- Vancouver accounts for 73% of all idle cars.
- In total 11% of all idle cars are dwelling at origin locations.

### **Port Performance**

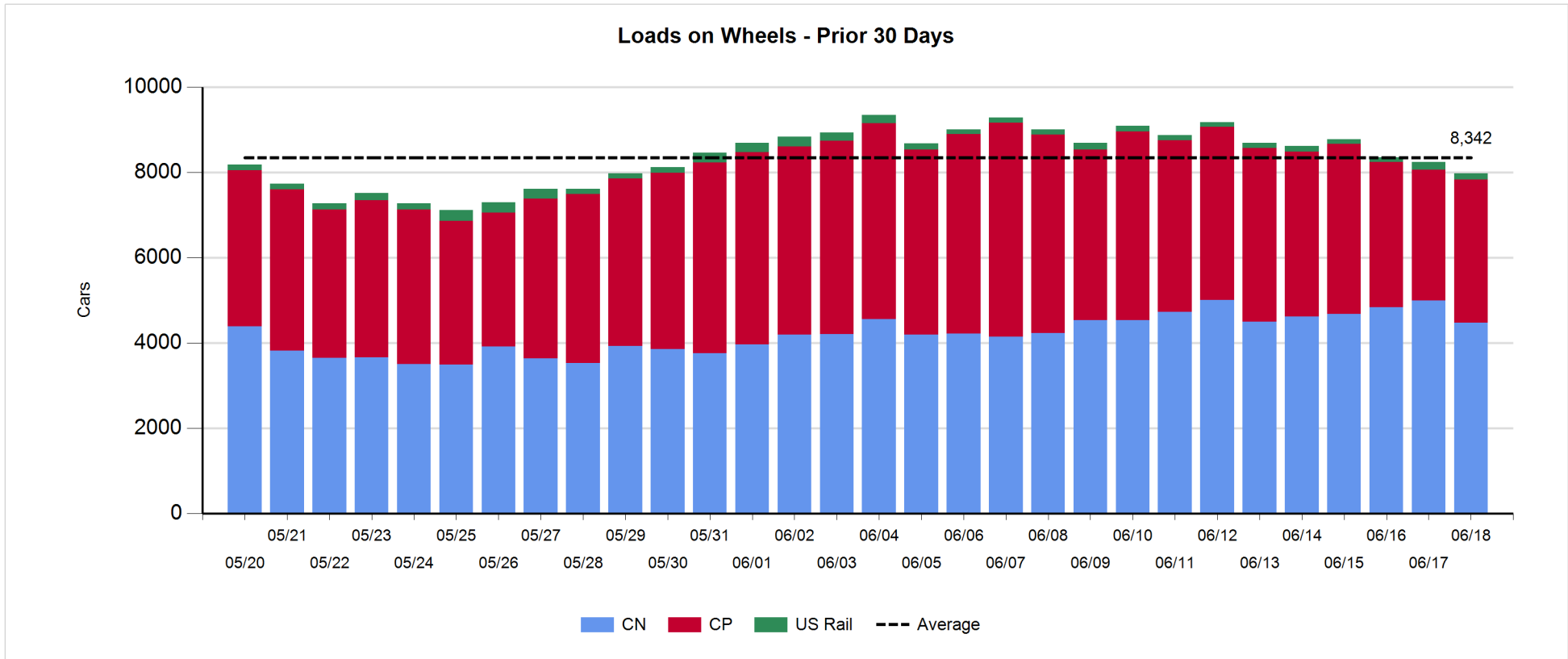
- CN and CP reported a total of 1,281 cars unloaded at the three major ports, now 20% above the trailing 30-day average. Two days in Week 47 unloads now ahead of last week's pace by more than 200 unloads, marking higher unloads at Vancouver and Prince Rupert offset by lower unloads at Thunder Bay.
- Vancouver
  - 826 unloads reported by CN and CP at the Port of Vancouver; CN - 380 and CP - 446. Two days in Week 47 unloads are tracking ahead of last week's performance by more than 200 unloads.
  - There are fewer than 1,300 cars on site at Vancouver with 950 cars arriving at the port in the last 24 hours.
  - CN and CP have more than 950 cars in British Columbia en route to Vancouver, with 550 cars at Kamloops and west, and 51% of traffic moving on CN.
- Prince Rupert
  - Prince Rupert reported 239 unloads, now ahead of last week's unloads after two days by 50 unloads.
  - Loads on wheels now above 1,000 cars - currently at 1,112 cars.
  - There are more than 350 cars west of Jasper en route to Prince Rupert.
  - There are 200 cars on site at Prince Rupert with 200 cars arriving at the port in the last 24 hours.
- Thunder Bay
  - 216 unloads were reported at Thunder Bay yesterday. Two days in Week 47 unloads are tracking behind last week's pace by more than 50 unloads.
  - There are more than 350 cars on site at Thunder Bay with more than 100 cars arriving at the port in the prior 24 hours.
  - There are 400 cars en route to Thunder Bay from Winnipeg and east.

**Daily Loads on Wheels - 6/18/2019**

	E Canada	Prince Rupert	Thunder Bay	USA/MEX	Vancouver	Total
CN	492	1,112	437	76	2,349	4,466
CP	172		1,000	49	2,139	3,360
Short Line	15				20	35
US Rail				115		115
	679	1,112	1,437	240	4,508	7,976

**Change in Loads on Wheels - Prior 24 Hours**

	E Canada	Prince Rupert	Thunder Bay	USA/MEX	Vancouver	Total
CN	-22	-239	-88	2	-172	-519
CP	122		83	-11	92	286
Short Line	-9				3	-6
US Rail				-22		-22
	91	-239	-5	-31	-77	-261

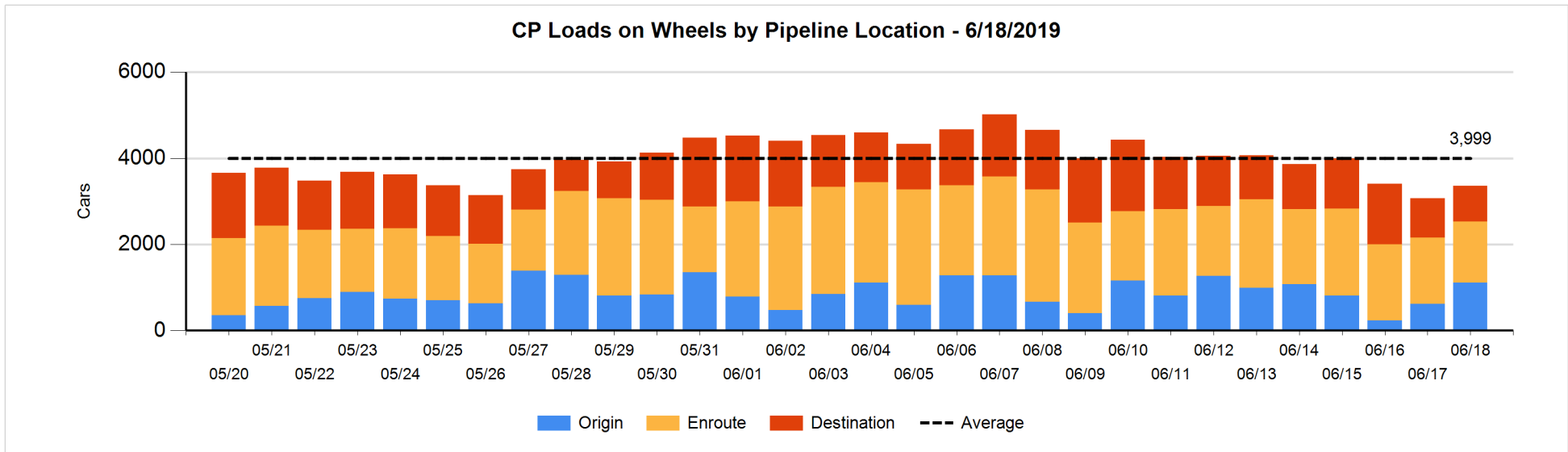
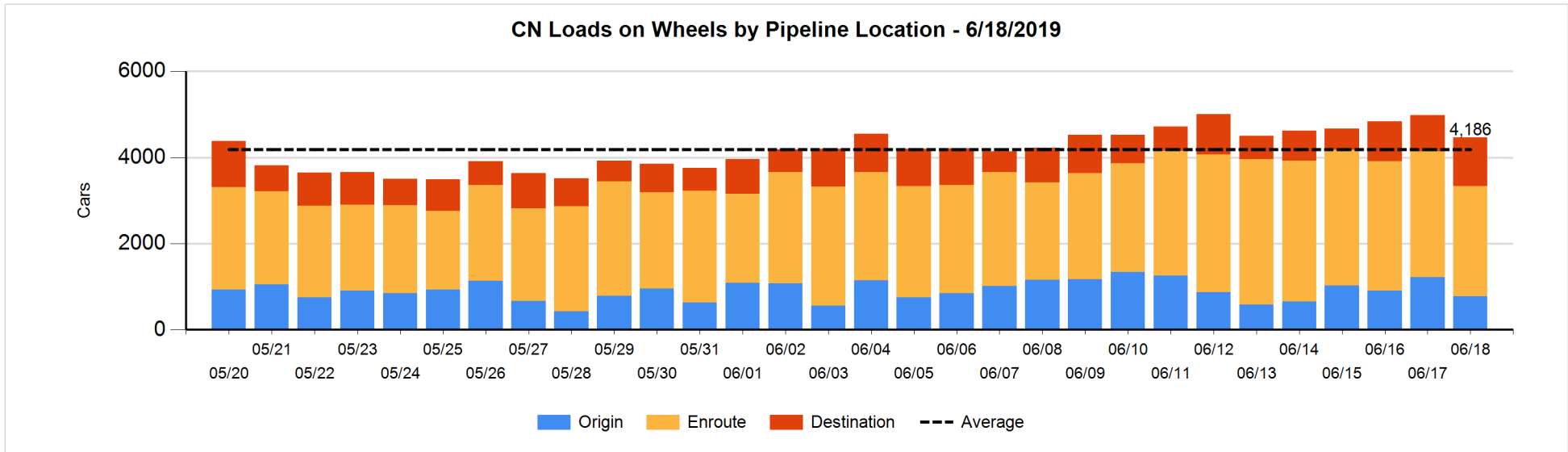


**Daily Loads on Wheels By Pipeline Location - 6/18/2019**

	E Canada	Prince Rupert	Thunder Bay	USA/MEX	Vancouver	Total
CN						
Origin	4	209		14	551	778
Enroute	392	699	296	27	1,138	2,552
Destination	96	204	141	35	660	1,136
	492	1,112	437	76	2,349	4,466
CP						
Origin	146		324	2	633	1,105
Enroute	20		448	46	905	1,419
Destination	6		228	1	601	836
	172		1,000	49	2,139	3,360
US Rail / Short Line						
Origin						
Enroute				42		42
Destination	15			73	20	108
	15			115	20	150

**Change in Daily Loads on Wheels By Pipeline Location - Prior 24 Hours**

	E Canada	Prince Rupert	Thunder Bay	USA/MEX	Vancouver	Total
CN						
Origin	4	-195	-275	12	8	-446
Enroute	-89	-13	191	-32	-417	-360
Destination	63	-31	-4	22	237	287
	-22	-239	-88	2	-172	-519
CP						
Origin	115		211	0	161	487
Enroute	1		-96	-12	-12	-119
Destination	6		-32	1	-57	-82
	122		83	-11	92	286
US Rail / Short Line						
Origin						
Enroute				-10		-10
Destination	-9			-12	3	-18
	-9			-22	3	-28

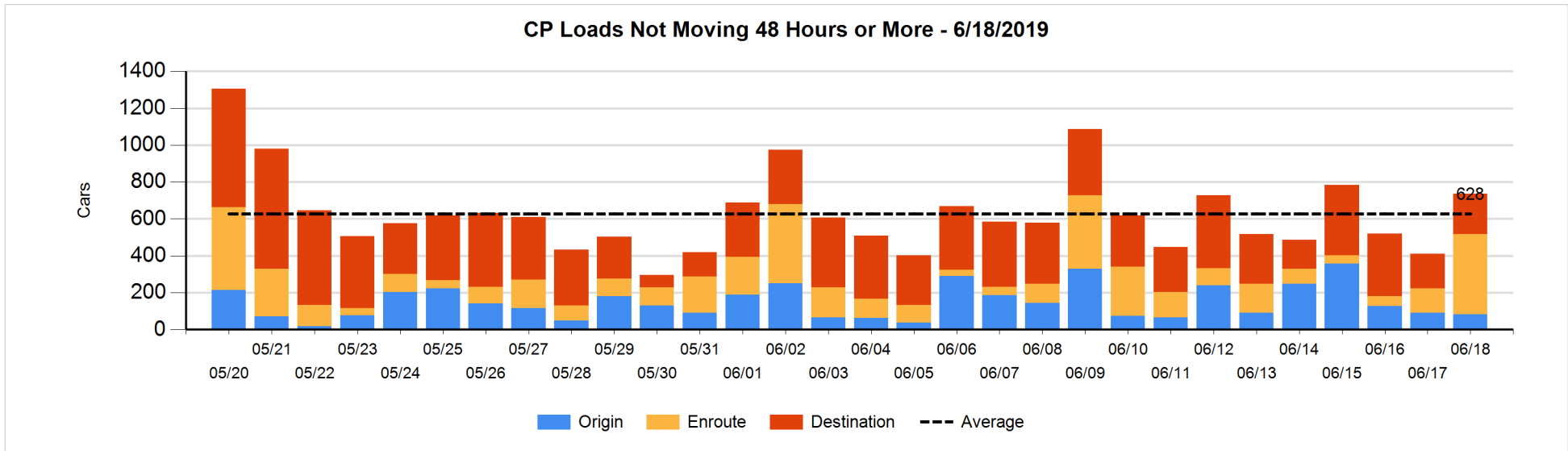
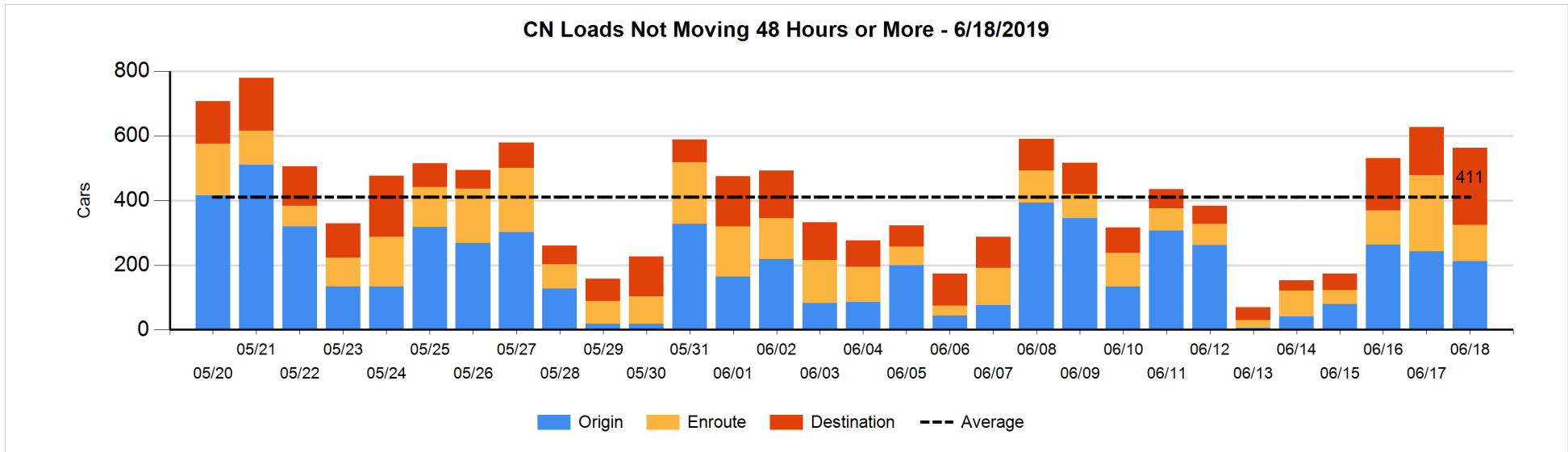


**Loads Not Moving 48 Hours or More - 6/18/2019**

	E Canada	Prince Rupert	Thunder Bay	USA/MEX	Vancouver	Total
<b>CN</b>						
Origin		100			112	212
Enroute	49	1		6	57	113
Destination	5	108	1	4	120	238
	54	209	1	10	289	563
<b>CP</b>						
Origin				1	82	83
Enroute			168	1	266	435
Destination			30		187	217
			198	2	535	735
<b>US Rail / Short Line</b>						
Origin						
Enroute				25		25
Destination	1			19	1	21
	1			44	1	46

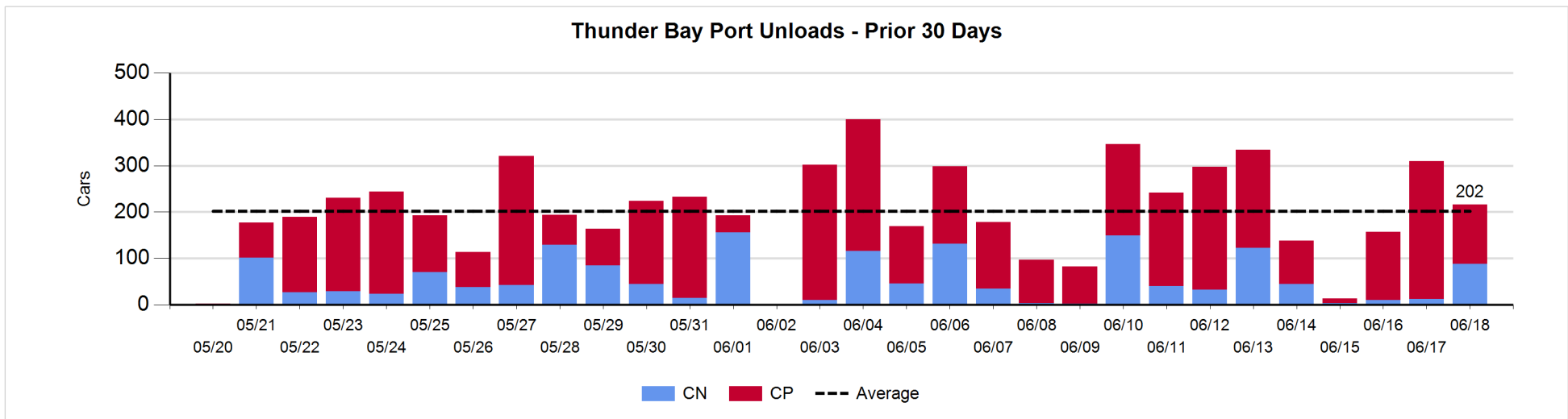
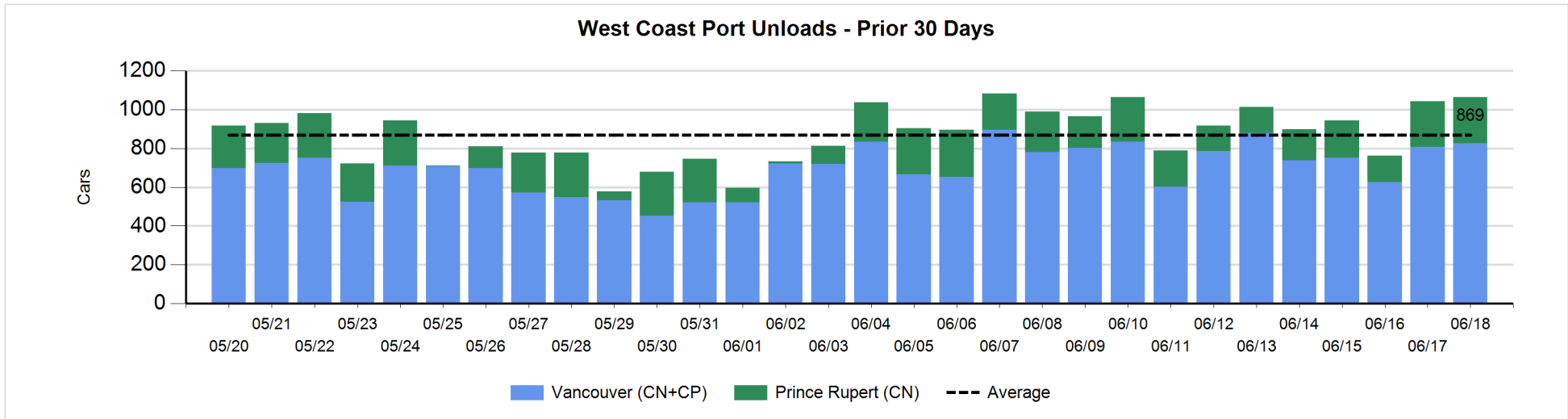
**Change in Loads Not Moving 48 Hours or More - 6/18/2019**

	E Canada	Prince Rupert	Thunder Bay	USA/MEX	Vancouver	Total
<b>CN</b>						
Origin		99	-130		0	-31
Enroute	-29	-3		0	-91	-123
Destination	-15	106	0	-8	6	89
	-44	202	-130	-8	-85	-65
<b>CP</b>						
Origin	-5			0	-3	-8
Enroute	-9		106	-10	217	304
Destination			10		18	28
	-14		116	-10	232	324
<b>US Rail / Short Line</b>						
Origin						
Enroute				-4		-4
Destination	-1			-2	-3	-6
	-1			-6	-3	-10



**Port Unloads - 6/18/2019**

	Prince Rupert	Vancouver	West Coast Total	Thunder Bay	Total
CN	239	380	619	88	707
CP		446	446	128	574
	239	826	1,065	216	1,281





**Port Terminal Status**

**Vancouver**

Daily Activity for 6/18/2019

	Cars Arrived	Cars Received in Interchange	Cars Delivered in Interchange	Cars Placed for Unloading	Loads on Wheels at Destination As of 6/18/2019
CN	433	223	408	408	660
CP	516	398	234	405	601
SRY	3	21		14	20

**Port Unloads**

	06/18	06/17	Week To Date	Last Week
CN	380	276	656	2,106
CP	446	532	978	3,113
SRY	14	16	30	32

**Age Profile of Loaded Cars Waiting Placement for Unloading**

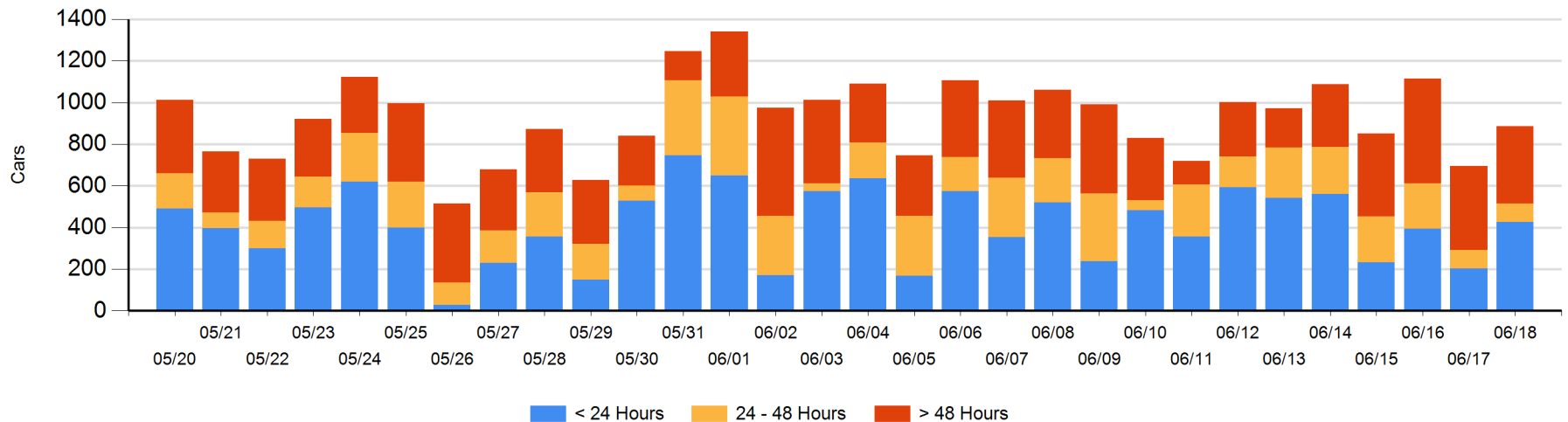
**Today**

	< 24 Hrs	24 - 48 Hrs	> 48-72 Hrs	> 72 Hrs	Total On Hand
CN	229	64	12	153	458
CP	193	26	12	195	426
SRY	3				3

**Change in Last 24 Hours**

	< 24 Hrs	24-48 Hrs	48 - 72 Hrs	> 72 Hrs
CN	161	26	-6	10
CP	57	-23	-44	7
SRY	3			

**Loaded Cars on Hand Vancouver Waiting for Placement - Last 30 Days All Railways**



**Port Terminal Status**

**Prince Rupert**

Daily Activity for 6/18/2019

	Cars Arrived	Cars Received in Interchange	Cars Delivered in Interchange	Cars Placed for Unloading	Loads on Wheels at Destination As of 6/18/2019
CN	210			207	204

**Port Unloads**

	06/18	06/17	Week To Date	Last Week
CN	239	234	473	1,171

**Age Profile of Loaded Cars Waiting Placement for Unloading**

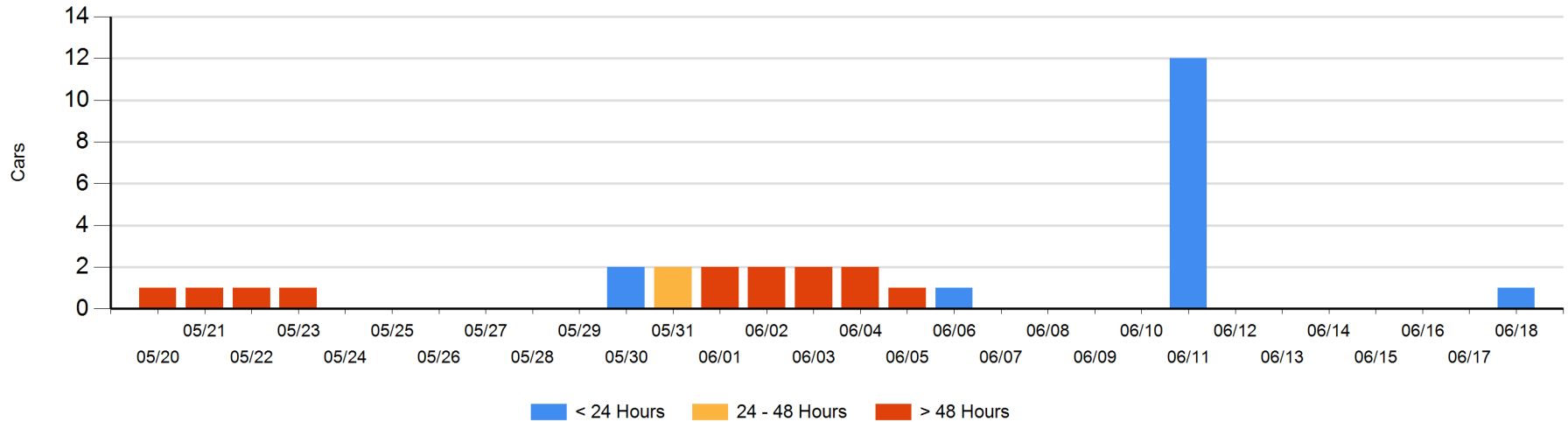
**Today**

	< 24 Hrs	24 - 48 Hrs	> 48-72 Hrs	> 72 Hrs	Total On Hand
CN	1				1

**Change in Last 24 Hours**

	< 24 Hrs	24-48 Hrs	48 - 72 Hrs	> 72 Hrs
CN	1			

Loaded Cars on Hand Prince Rupert Waiting for Placement - Last 30 Days All Railways



**Port Terminal Status**

**Thunder Bay**

Daily Activity for 6/18/2019

	Cars Arrived	Cars Received in Interchange	Cars Delivered in Interchange	Cars Placed for Unloading	Loads on Wheels at Destination As of 6/18/2019
CN	28			56	141
CP	95			57	228

**Port Unloads**

	06/18	06/17	Week To Date	Last Week
CN	88	12	100	402
CP	128	298	426	1,125

**Age Profile of Loaded Cars Waiting Placement for Unloading**

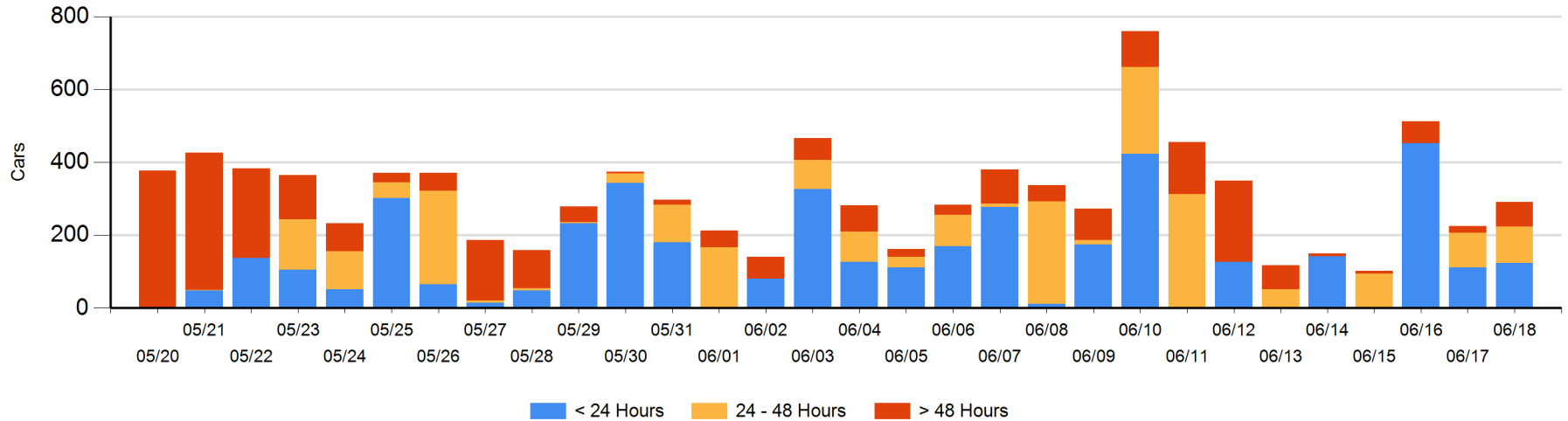
**Today**

	< 24 Hrs	24 - 48 Hrs	> 48-72 Hrs	> 72 Hrs	Total On Hand
CN	28				28
CP	95	101	59	8	263

**Change in Last 24 Hours**

	< 24 Hrs	24-48 Hrs	48 - 72 Hrs	> 72 Hrs
CN	28			
CP	-16	5	59	-10

Loaded Cars on Hand Thunder Bay Waiting for Placement - Last 30 Days All Railways



## Measurement Definitions

Loads on Wheels	<p>Count of loaded rail cars including all rail cars that have been released loaded at origin and have not been reported by the railway as unloaded at destination.</p> <p>Counts include all rail cars (hopper cars and boxcars) moving within a pipeline.</p>
Loads Not Moving	<p>Loaded rail cars for which the railways have not reported a movement event for 48 hours or more whether the rail car is at origin, enroute or at destination.</p>
Port Unloads	<p>Count of rail cars reported by railways as unloaded at the western port destinations of Vancouver, Prince Rupert and Thunder Bay.</p> <p>Unload counts include all rail cars (hopper cars and boxcars) unloaded by all receivers including major port terminals, transloaders and other receivers.</p>
Cars Arrived	<p>Count of rail cars reported as arrived at the destination railway terminal.</p>
Cars Received in Interchange	<p>Count of rail cars received in interchange by each railway within a destination railway terminal. Interchange activity is tracked for the Vancouver and Thunder Bay pipelines as applicable.</p>
Cars Delivered in Interchange	<p>Count of rail cars delivered in interchange by each railway within a destination railway terminal. Interchange activity is tracked for the Vancouver and Thunder Bay pipelines as applicable.</p>
Cars Placed for Unloading	<p>Count of rail cars reported by the railways as placed loaded at the receiver's facility for unloading.</p>
Loads on Wheels at Destination	<p>Count of rail cars that remain under load within the destination railway terminal including rail cars that have been reported as placed for unloading but not yet reported as unloaded.</p>
Waiting Placement for Unloading	<p>Count of rail cars that have been reported as arrived at the destination railway terminal but not reported as placed for unloading by the railway.</p> <p>For the Ports of Vancouver, Prince Rupert and Thunder Bay the count of rail cars waiting placement for unloading is categorized by age – i.e. the elapsed time from arrival at destination to the current report date.</p>