

SPEED READ

- Loads on wheels increased overnight, reflecting higher CP traffic offset by a decline in CN volumes. On a net basis, volumes increased due to higher traffic in the Vancouver and Thunder Bay corridors offset by lower traffic in the USA/MEX, Prince Rupert and E. Canada corridors.
- Network fluidity improved overnight, led by a decline in idle car counts on both CN and CP by 1% (-14) and 19% (-493), respectively. The total count of cars for 4+ days on both railways increased 2% (+70) overnight - presently at 3,327 cars.
- Two days in Week 32 unloads now behind prior week's performance by more than 450 unloads, reflecting reduced unloads at Vancouver and Prince Rupert offset by improved week over week performance at Thunder Bay.

Loads on Wheels

- Loads on wheels increased for the third consecutive day, up 3% (+385) overnight, due to higher volumes on CP offset by lower traffic on CN - combined total at 11,396 and 8% above the trailing 30-day average.
- On a net basis, the increase in loads on wheels indicates higher traffic in the Vancouver and Thunder Bay corridors offset by lower traffic in the USA/MEX, Prince Rupert and E. Canada corridors.
- CN volumes declined 3% (-174) overnight, with lower traffic across all corridors other than E. Canada. System wide CN loads on wheels currently at 5,824 and 4% above the trailing 30-day average.
- CP volumes increased significantly by 13% (+604) overnight, driven by a rise in traffic in the Vancouver and Thunder Bay corridors offset by a decline in traffic in the E. Canada and USA/MEX corridors. CP system wide loads on wheels presently at 5,386 and 13% above the trailing 30-day average.
- Vancouver presently at 7,082, rose 7% (+450) overnight and have now increased for the third consecutive day, now 7% above the trailing 30-day average.
- The Prince Rupert pipeline presently at 1,942, fell 3% (-52) overnight, and 19% above the trailing 30-day average.
- Thunder Bay volumes increased significantly by 69% (+84) overnight - currently at 205, the highest seen in the last 30 days, and 288% above the trailing 30-day average., with 98% of traffic moving on CP.

Hopper Car Rationing

- CN rationed 637 hopper cars in week 30.

Loads Not Moving

- **The count of cars not moving for 48+ hours decreased 11% (-507) overnight, reflecting reduced counts on both CN and CP. Idle car counts currently at 3,998 and 1% below the trailing 30-day average.**
- CN
 - **The count of idle cars for 48+ hours declined for the third consecutive day, down 1% (-14) overnight - currently at 1,935 cars.**
 - The number of cars idle for 4+ days declined 13% (-208) overnight - currently at 1,387 cars.
 - The count of cars not moving for 7+ days decreased 8% (-72) overnight - currently at 823 cars.
 - Vancouver represents 53% of all idle cars.
 - In total 82% of all idle cars are dwelling at origin locations.
- CP
 - **CP idle car counts for 48+ hours decreased 19% (-493) overnight - currently at 2,063 cars.**
 - The number of cars idle for 4+ days increased 17% (+278) overnight - currently at 1,940 cars.

- The number of cars idle for 7+ days gained 14% (+100) overnight - presently at 840 cars.
- Vancouver accounts for 78% of all idle cars.
- In total 77% of all idle cars are dwelling at origin locations.

Port Performance

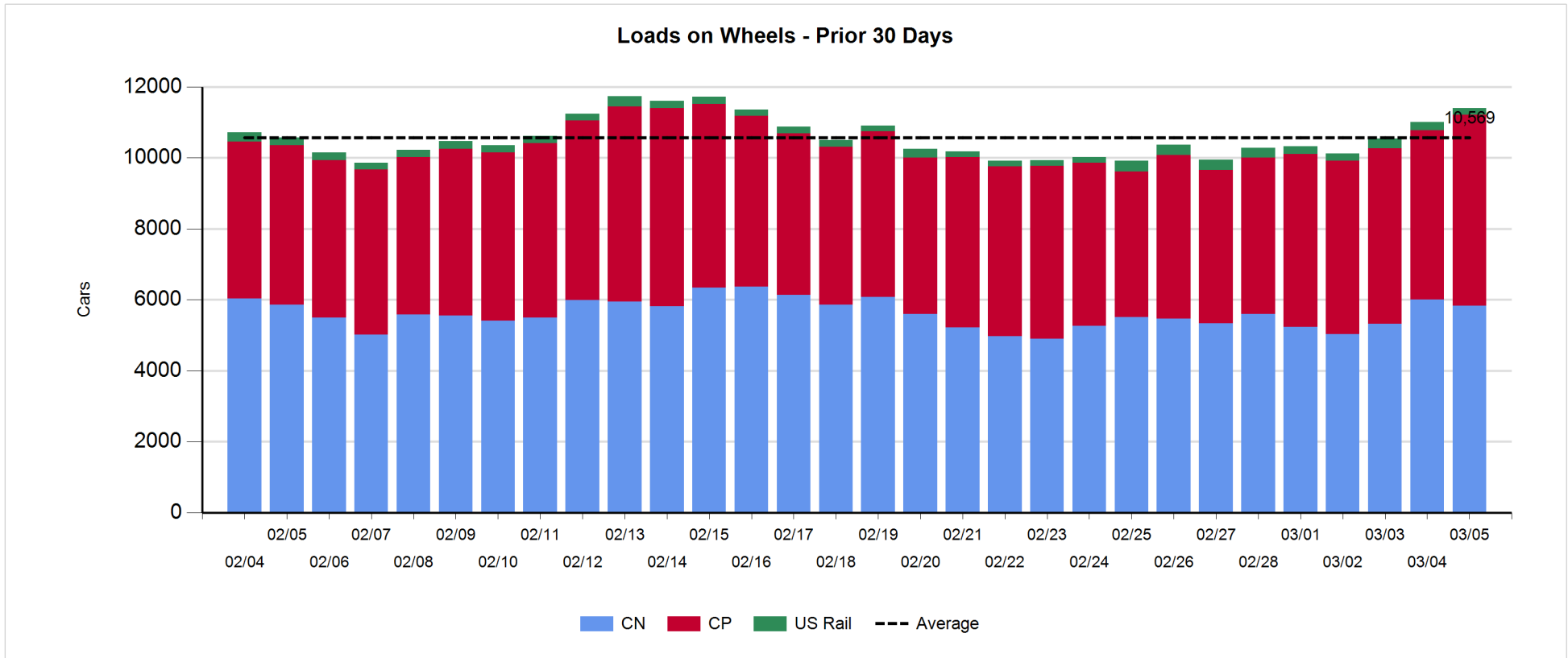
- CN and CP reported a total of 573 cars unloaded at the three major ports, now 24% below the trailing 30-day average. Two days in Week 32 unloads now behind last week's pace by more than 450 unloads, reflecting reduced unloads at Vancouver and Prince Rupert offset by higher unloads at Thunder Bay.
- Vancouver
 - 313 unloads reported by CN and CP at the Port of Vancouver; CN - 121 and CP - 192. Two days in Week 32 unloads are tracking behind last week's performance by fewer than 350 unloads.
 - There are 650 cars on site at Vancouver with 800 cars arriving at the port in the last 24 hours.
 - CN and CP have more than 600 cars in British Columbia en route to Vancouver, with less than 300 cars at Kamloops and west, and 84% of traffic moving on CP.
- Prince Rupert
 - Prince Rupert reported 235 unloads, now behind last week's unloads after two days by more than 150 unloads.
 - Loads on wheels now above 1,000 cars - presently at 1,942 cars.
 - There are 400 cars west of Jasper en route to Prince Rupert.
 - There are fewer than 100 cars on site at Prince Rupert with 300 cars arriving at the port in the last 24 hours.
- Thunder Bay
 - 25 unloads were reported at Thunder Bay yesterday. Two days in Week 32 unloads are tracking ahead of last week's pace by 23 unloads.
 - There are 50 cars on site at Thunder Bay with zero cars arriving at the port in the prior 24 hours.
 - There are zero cars en route to Thunder Bay from Winnipeg and east.

Daily Loads on Wheels - 3/5/2019

	E Canada	Prince Rupert	Thunder Bay	USA/MEX	Vancouver	Total
CN	691	1,942	5	246	2,940	5,824
CP	512		200	578	4,096	5,386
Short Line	5				46	51
US Rail				135		135
	1,208	1,942	205	959	7,082	11,396

Change in Loads on Wheels - Prior 24 Hours

	E Canada	Prince Rupert	Thunder Bay	USA/MEX	Vancouver	Total
CN	31	-52	0	-5	-148	-174
CP	-62		84	-22	604	604
Short Line	0				-6	-6
US Rail				-39		-39
	-31	-52	84	-66	450	385



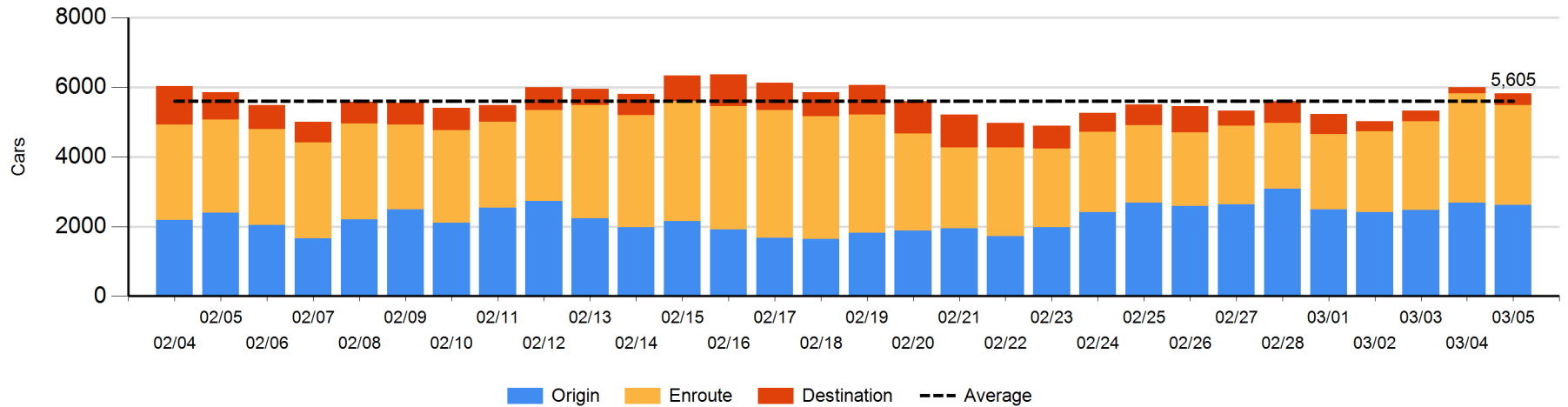
Daily Loads on Wheels By Pipeline Location - 3/5/2019

	E Canada	Prince Rupert	Thunder Bay	USA/MEX	Vancouver	Total
CN						
Origin	196	827		67	1,533	2,623
Enroute	437	1,029		152	1,251	2,869
Destination	58	86	5	27	156	332
	691	1,942	5	246	2,940	5,824
CP						
Origin	112		109	232	2,025	2,478
Enroute	337		55	311	1,620	2,323
Destination	63		36	35	451	585
	512		200	578	4,096	5,386
US Rail / Short Line						
Origin						
Enroute	5			70		75
Destination				65	46	111
	5			135	46	186

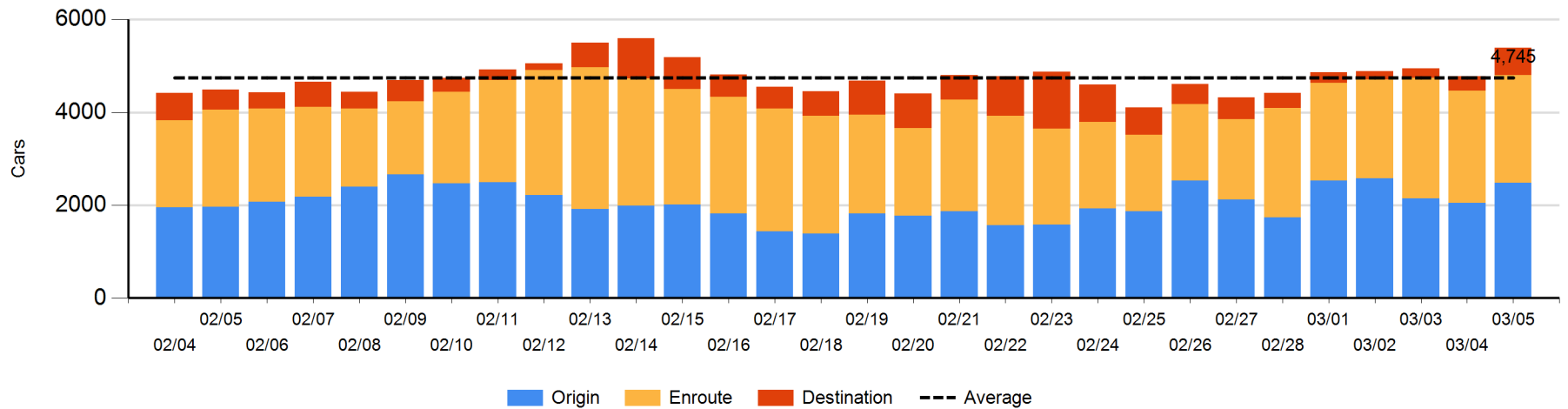
Change in Daily Loads on Wheels By Pipeline Location - Prior 24 Hours

	E Canada	Prince Rupert	Thunder Bay	USA/MEX	Vancouver	Total
CN						
Origin	59	-65		5	-56	-57
Enroute	-23	-49		-1	-195	-268
Destination	-5	62	0	-9	103	151
	31	-52	0	-5	-148	-174
CP						
Origin	-20		109	3	341	433
Enroute	20		0	-1	-115	-96
Destination	-62		-25	-24	378	267
	-62		84	-22	604	604
US Rail / Short Line						
Origin						
Enroute	0			-31		-31
Destination				-8	-6	-14
	0			-39	-6	-45

CN Loads on Wheels by Pipeline Location - 3/5/2019



CP Loads on Wheels by Pipeline Location - 3/5/2019

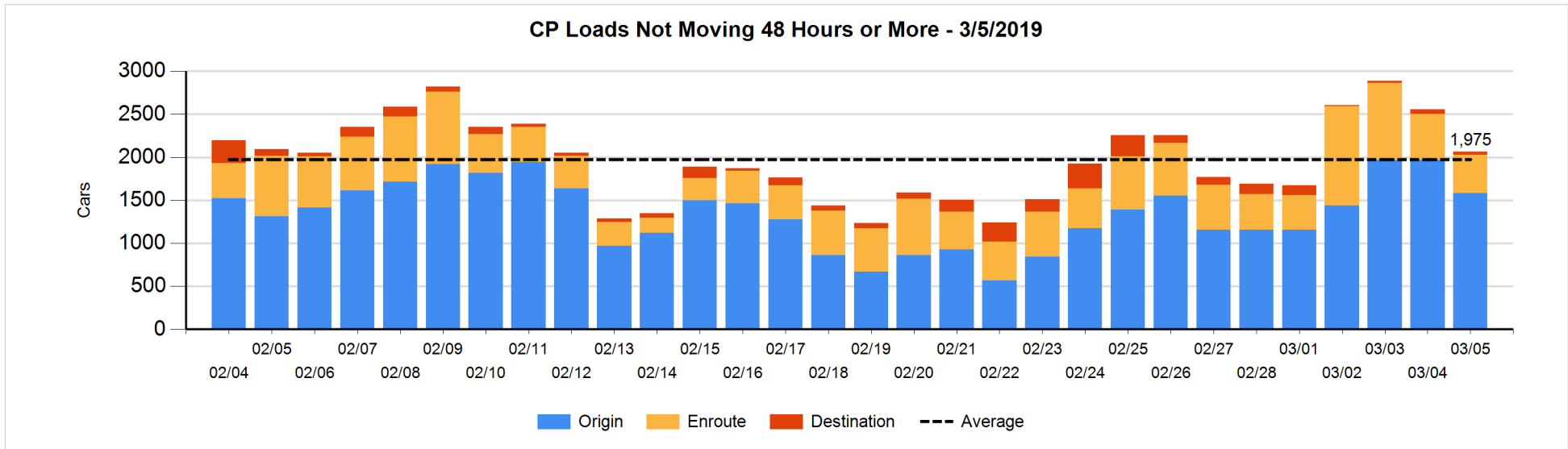
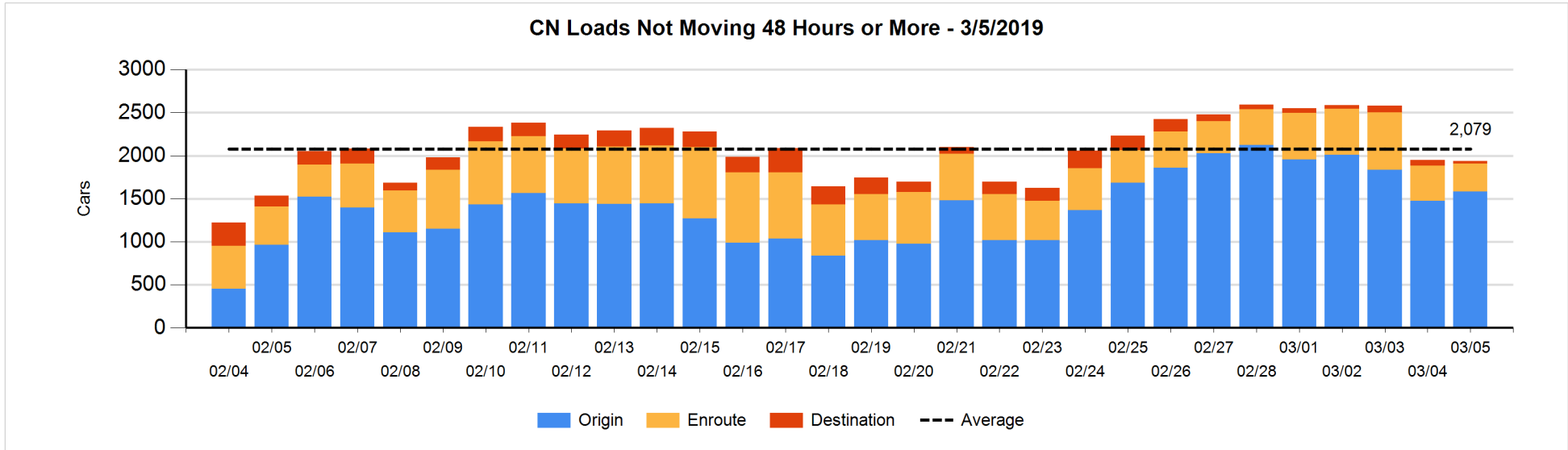


Loads Not Moving 48 Hours or More - 3/5/2019

	E Canada	Prince Rupert	Thunder Bay	USA/MEX	Vancouver	Total
CN						
Origin	137	477		56	916	1586
Enroute	105	96		27	91	319
Destination	5	9		6	10	30
	247	582		89	1017	1935
CP						
Origin	107			203	1276	1586
Enroute	73			52	318	443
Destination			4	13	17	34
	180		4	268	1611	2063
US Rail / Short Line						
Origin						
Enroute	4			45		49
Destination				40	10	50
	4			85	10	99

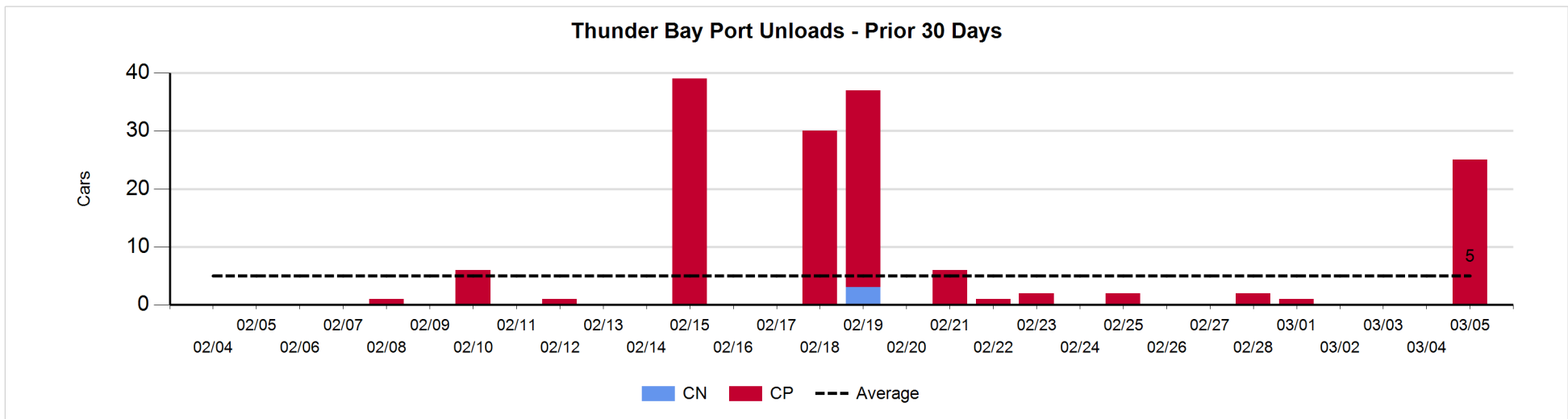
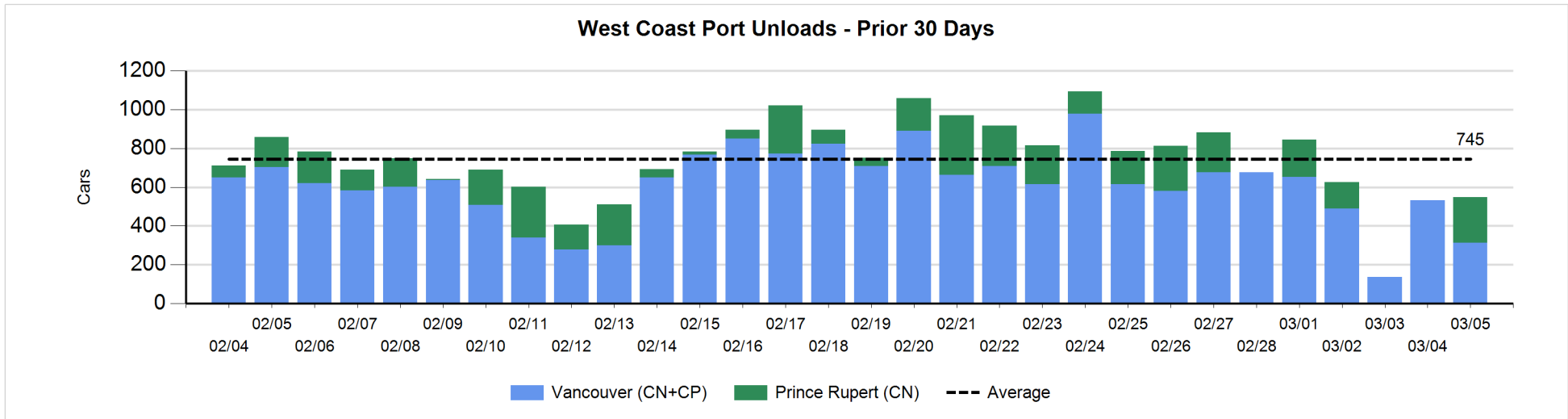
Change in Loads Not Moving 48 Hours or More - 3/5/2019

	E Canada	Prince Rupert	Thunder Bay	USA/MEX	Vancouver	Total
CN						
Origin	86	-97		-1	122	110
Enroute	-29	-38		-16	-3	-86
Destination	-16	-5	-5	-9	-3	-38
	41	-140	-5	-26	116	-14
CP						
Origin	0			-26	-356	-382
Enroute	-2			-91	0	-93
Destination	-7		-1	13	-23	-18
	-9		-1	-104	-379	-493
US Rail / Short Line						
Origin						
Enroute	4			21		25
Destination				-4	-14	-18
	4			17	-14	7



Port Unloads - 3/5/2019

	Prince Rupert	Vancouver	West Coast Total	Thunder Bay	Total
CN	235	121	356		356
CP		192	192	25	217
	235	313	548	25	573



Port Terminal Status

Vancouver

Daily Activity for 3/5/2019

	Cars Arrived	Cars Received in Interchange	Cars Delivered in Interchange	Cars Placed for Unloading	Loads on Wheels at Destination As of 3/5/2019
CN	229	210	306	137	156
CP	563	306	217	353	451
SRY		7		5	46

Port Unloads

	03/05	03/04	Week To Date	Last Week
CN	121	268	389	2,127
CP	192	265	457	1,698
SRY	6	23	29	63

Age Profile of Loaded Cars Waiting Placement for Unloading

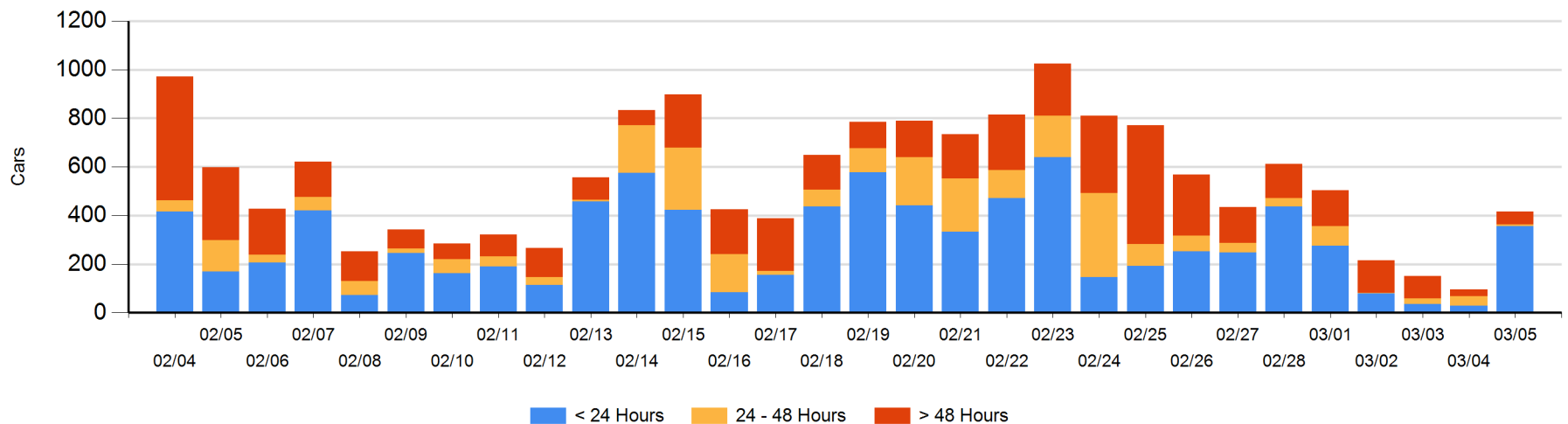
Today

	< 24 Hrs	24 - 48 Hrs	> 48-72 Hrs	> 72 Hrs	Total On Hand
CN	16		12	5	33
CP	341	7	15	19	382
SRY					0

Change in Last 24 Hours

	< 24 Hrs	24-48 Hrs	48 - 72 Hrs	> 72 Hrs
CN	-5	-12	11	1
CP	334	-20	15	-5
SRY				

Loaded Cars on Hand Vancouver Waiting for Placement - Last 30 Days All Railways



Port Terminal Status

Prince Rupert

Daily Activity for 3/5/2019

	Cars Arrived	Cars Received in Interchange	Cars Delivered in Interchange	Cars Placed for Unloading	Loads on Wheels at Destination As of 3/5/2019
CN	295			295	86

Port Unloads

	03/05	03/04	Week To Date	Last Week
CN	235		235	940

Age Profile of Loaded Cars Waiting Placement for Unloading

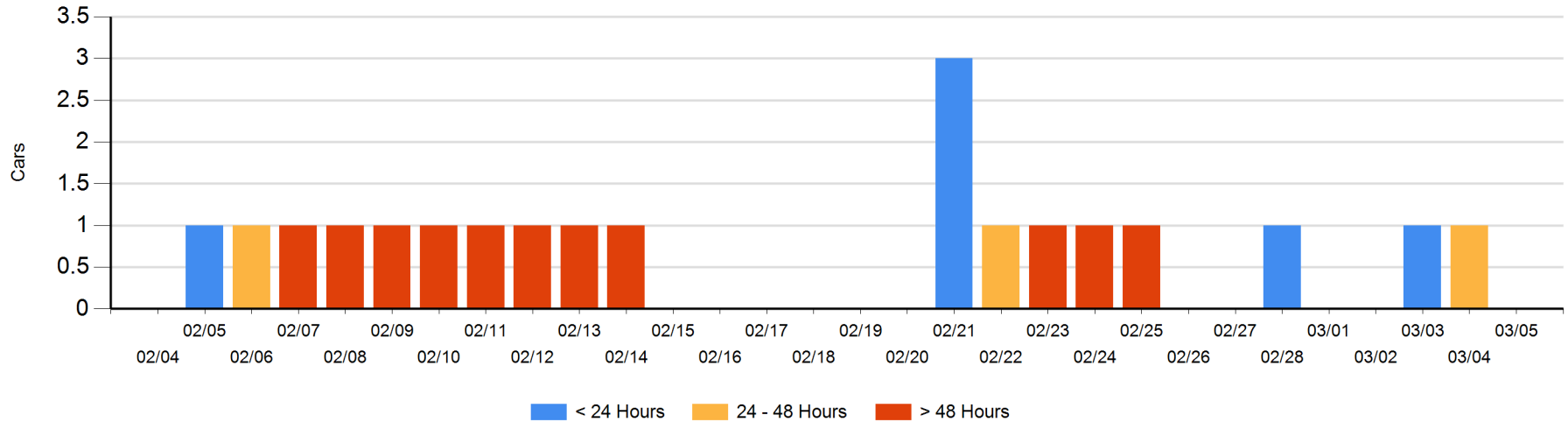
Today

	< 24 Hrs	24 - 48 Hrs	> 48-72 Hrs	> 72 Hrs	Total On Hand
CN					0

Change in Last 24 Hours

	< 24 Hrs	24-48 Hrs	48 - 72 Hrs	> 72 Hrs
CN		-1		

Loaded Cars on Hand Prince Rupert Waiting for Placement - Last 30 Days All Railways



Port Terminal Status

Thunder Bay

Daily Activity for 3/5/2019

	Cars Arrived	Cars Received in Interchange	Cars Delivered in Interchange	Cars Placed for Unloading	Loads on Wheels at Destination As of 3/5/2019
CN					5
CP				56	36

Port Unloads

	03/05	03/04	Week To Date	Last Week
CN				
CP	25		25	5

Age Profile of Loaded Cars Waiting Placement for Unloading

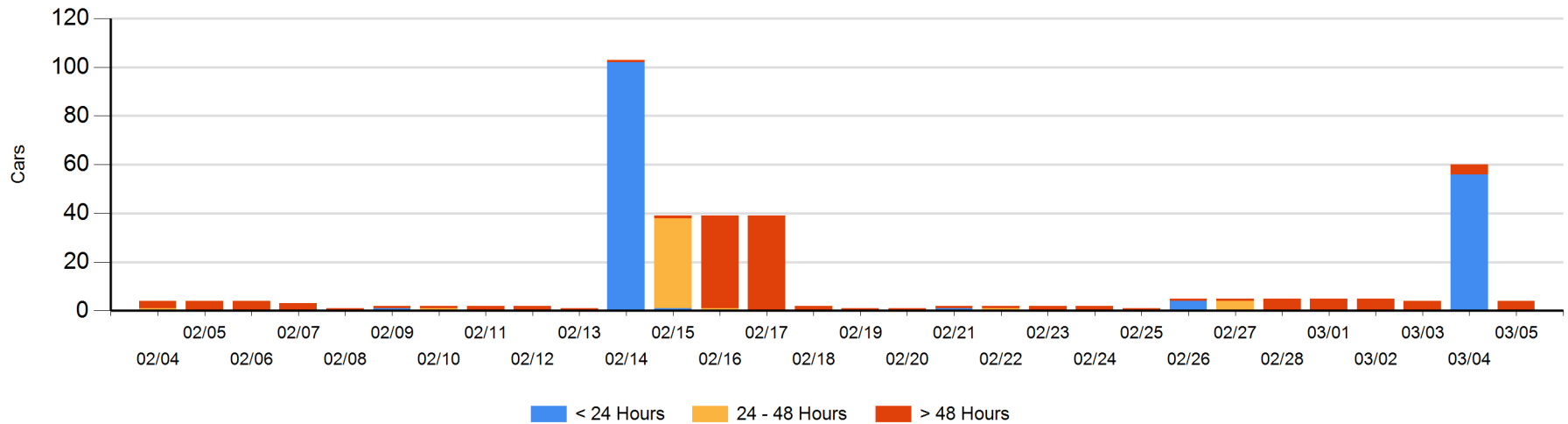
Today

	< 24 Hrs	24 - 48 Hrs	> 48-72 Hrs	> 72 Hrs	Total On Hand
CN				4	4
CP					0

Change in Last 24 Hours

	< 24 Hrs	24-48 Hrs	48 - 72 Hrs	> 72 Hrs
CN				0
CP	-56			

Loaded Cars on Hand Thunder Bay Waiting for Placement - Last 30 Days All Railways



Measurement Definitions

Loads on Wheels	<p>Count of loaded rail cars including all rail cars that have been released loaded at origin and have not been reported by the railway as unloaded at destination.</p> <p>Counts include all rail cars (hopper cars and boxcars) moving within a pipeline.</p>
Loads Not Moving	<p>Loaded rail cars for which the railways have not reported a movement event for 48 hours or more whether the rail car is at origin, enroute or at destination.</p>
Port Unloads	<p>Count of rail cars reported by railways as unloaded at the western port destinations of Vancouver, Prince Rupert and Thunder Bay.</p> <p>Unload counts include all rail cars (hopper cars and boxcars) unloaded by all receivers including major port terminals, transloaders and other receivers.</p>
Cars Arrived	<p>Count of rail cars reported as arrived at the destination railway terminal.</p>
Cars Received in Interchange	<p>Count of rail cars received in interchange by each railway within a destination railway terminal. Interchange activity is tracked for the Vancouver and Thunder Bay pipelines as applicable.</p>
Cars Delivered in Interchange	<p>Count of rail cars delivered in interchange by each railway within a destination railway terminal. Interchange activity is tracked for the Vancouver and Thunder Bay pipelines as applicable.</p>
Cars Placed for Unloading	<p>Count of rail cars reported by the railways as placed loaded at the receiver's facility for unloading.</p>
Loads on Wheels at Destination	<p>Count of rail cars that remain under load within the destination railway terminal including rail cars that have been reported as placed for unloading but not yet reported as unloaded.</p>
Waiting Placement for Unloading	<p>Count of rail cars that have been reported as arrived at the destination railway terminal but not reported as placed for unloading by the railway.</p> <p>For the Ports of Vancouver, Prince Rupert and Thunder Bay the count of rail cars waiting placement for unloading is categorized by age – i.e. the elapsed time from arrival at destination to the current report date.</p>