

## SPEED READ

- Loads on wheels decreased overnight, reflecting a decline in CN volumes offset by higher CP volumes. On a net basis, volumes fell due to lower traffic across all corridors - Vancouver, Thunder Bay, Prince Rupert, USA/MEX and E. Canada.
- Network fluidity deteriorated overnight, led by an increase in idle car counts on both CN and CP by (+1) and 11% (+175), respectively. The total count of cars for 4+ days on both railways decreased 2% (-48) overnight - currently at 2,374 cars.
- Four days in Week 32 unloads now behind prior week's performance by about 600 unloads, reflecting lower unloads at Vancouver and Prince Rupert offset by improved week over week performance at Thunder Bay.

---

## Loads on Wheels

- Loads on wheels decreased 2% (-272) overnight, due to lower traffic on CN offset by higher traffic on CP - combined total at 11,494 and 8% above the trailing 30-day average.
- On a net basis, the decline in loads on wheels indicates lower volumes across all corridors - Vancouver, Prince Rupert, USA/MEX and E. Canada.
- CN volumes fell 5% (-291) overnight, with lower traffic across all corridors - Vancouver, Prince Rupert and E. Canada. System wide CN loads on wheels currently at 6,106 and 8% above the trailing 30-day average.
- CP volumes increased slightly by 1% (+42) overnight, driven by a rise in volumes in the Vancouver corridor offset by a decline in traffic in the USA/MEX and E. Canada corridors. CP system wide loads on wheels currently at 5,224 and 9% above the trailing 30-day average.
- Vancouver currently at 7,027, declined slightly (-23) overnight, now 6% above the trailing 30-day average.
- The Prince Rupert pipeline currently at 1,902, decreased 8% (-165) overnight, and 15% above the trailing 30-day average.
- Thunder Bay volumes remained unchanged (0) overnight - currently at 174 and 171% above the trailing 30-day average., with 97% of traffic moving on CP.

## Hopper Car Rationing

- CN rationed 637 hopper cars in week 30.

## Loads Not Moving

- **The count of cars not moving for 48+ hours increased 5% (+176) overnight, reflecting higher counts on both CN and CP. Idle car counts currently at 3,700 and 9% below the trailing 30-day average.**
- CN
  - **The count of idle cars for 48+ hours increased marginally (+1) overnight - currently at 1,882 cars.**
  - The number of cars idle for 4+ days increased 23% (+197) overnight - currently at 1,056 cars.
  - The count of cars not moving for 7+ days gained 14% (+73) overnight - presently at 610 cars.
  - Vancouver represents 39% of all idle cars.
  - In total 86% of all idle cars are dwelling at origin locations.
- CP
  - **CP idle car counts for 48+ hours increased 11% (+175) overnight - presently at 1,818 cars.**
  - The number of cars idle for 4+ days decreased 16% (-245) overnight - currently at 1,318 cars.
  - The number of cars idle for 7+ days rose 17% (+129) overnight - presently at 886 cars.
  - Vancouver accounts for 89% of all idle cars.

- In total 78% of all idle cars are dwelling at origin locations.

### **Port Performance**

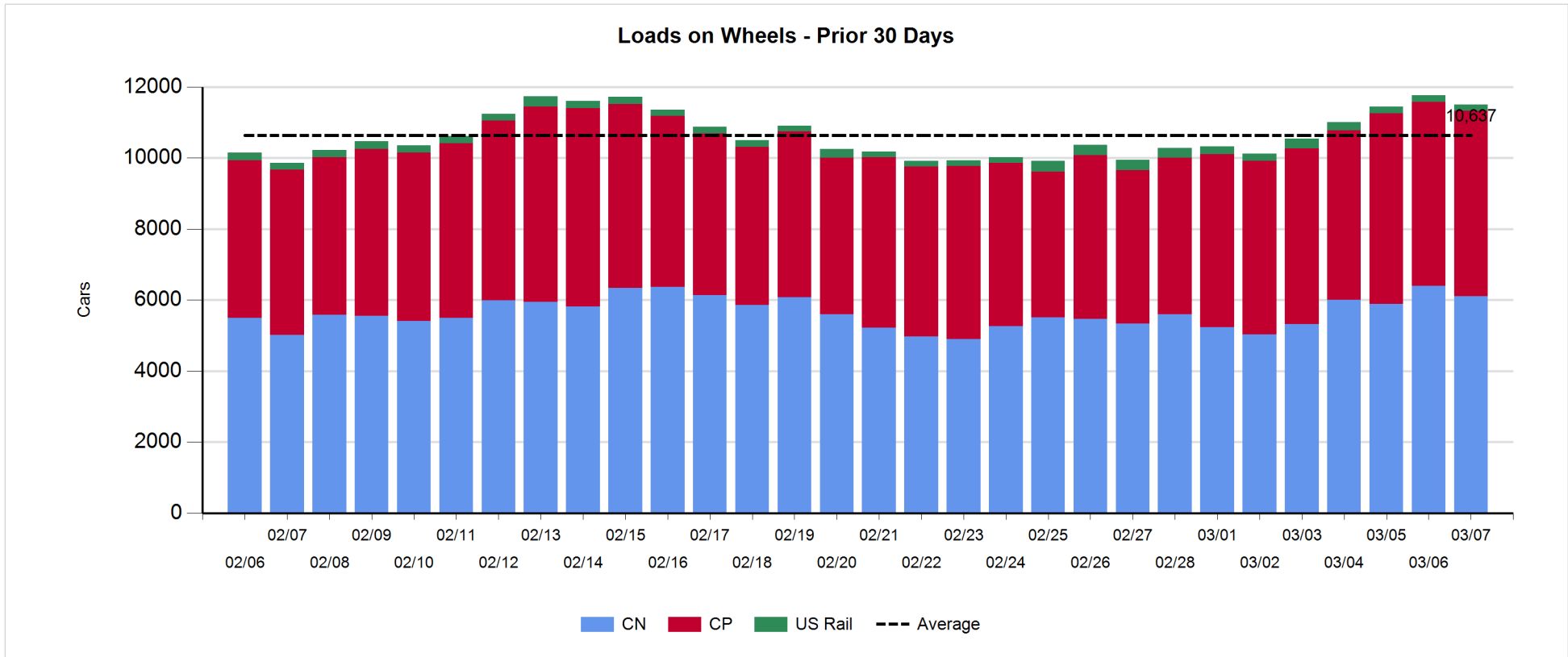
- CN and CP reported a total of 641 cars unloaded at the three major ports, now 14% below the trailing 30-day average. Four days in Week 32 unloads now behind last week's pace by nearly 600 unloads, reflecting reduced unloads at Vancouver and Prince Rupert offset by higher unloads at Thunder Bay.
- Vancouver
  - 448 unloads reported by CN and CP at the Port of Vancouver; CN - 164 and CP - 284. Four days in Week 32 unloads are tracking behind last week's performance by nearly 550 unloads.
  - There are 800 cars on site at Vancouver with more than 800 cars arriving at the port in the last 24 hours.
  - CN and CP have 800 cars in British Columbia en route to Vancouver, with more than 400 cars at Kamloops and west, and 53% of traffic moving on CP.
- Prince Rupert
  - Prince Rupert reported 193 unloads, now behind last week's unloads after four days by 100 unloads.
  - Loads on wheels now above 1,000 cars - currently at 1,902 cars.
  - There are 350 cars west of Jasper en route to Prince Rupert.
  - There are more than 250 cars on site at Prince Rupert with 450 cars arriving at the port in the last 24 hours.
- Thunder Bay
  - Zero unloads were reported at Thunder Bay yesterday. Four days in Week 32 unloads are tracking ahead of last week's pace by 50 unloads.
  - There are 9 cars on site at Thunder Bay with zero cars arriving at the port in the prior 24 hours.
  - There are more than 150 cars en route to Thunder Bay from Winnipeg and east.

**Daily Loads on Wheels - 3/7/2019**

|            | E Canada | Prince Rupert | Thunder Bay | USA/MEX | Vancouver | Total  |
|------------|----------|---------------|-------------|---------|-----------|--------|
| CN         | 861      | 1,902         | 5           | 201     | 3,137     | 6,106  |
| CP         | 633      |               | 169         | 560     | 3,862     | 5,224  |
| Short Line | 4        |               |             |         | 28        | 32     |
| US Rail    |          |               |             | 132     |           | 132    |
|            | 1,498    | 1,902         | 174         | 893     | 7,027     | 11,494 |

**Change in Loads on Wheels - Prior 24 Hours**

|            | E Canada | Prince Rupert | Thunder Bay | USA/MEX | Vancouver | Total |
|------------|----------|---------------|-------------|---------|-----------|-------|
| CN         | -22      | -165          | 0           | 0       | -104      | -291  |
| CP         | -14      |               | 0           | -35     | 91        | 42    |
| Short Line | -1       |               |             |         | -10       | -11   |
| US Rail    |          |               |             | -12     |           | -12   |
|            | -37      | -165          | 0           | -47     | -23       | -272  |

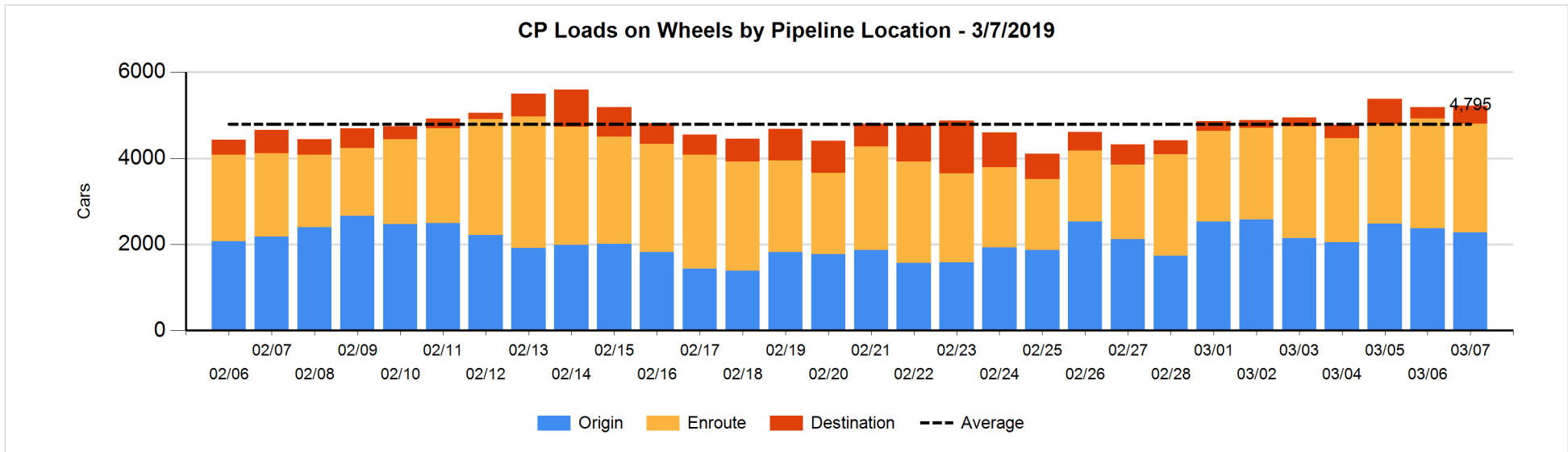
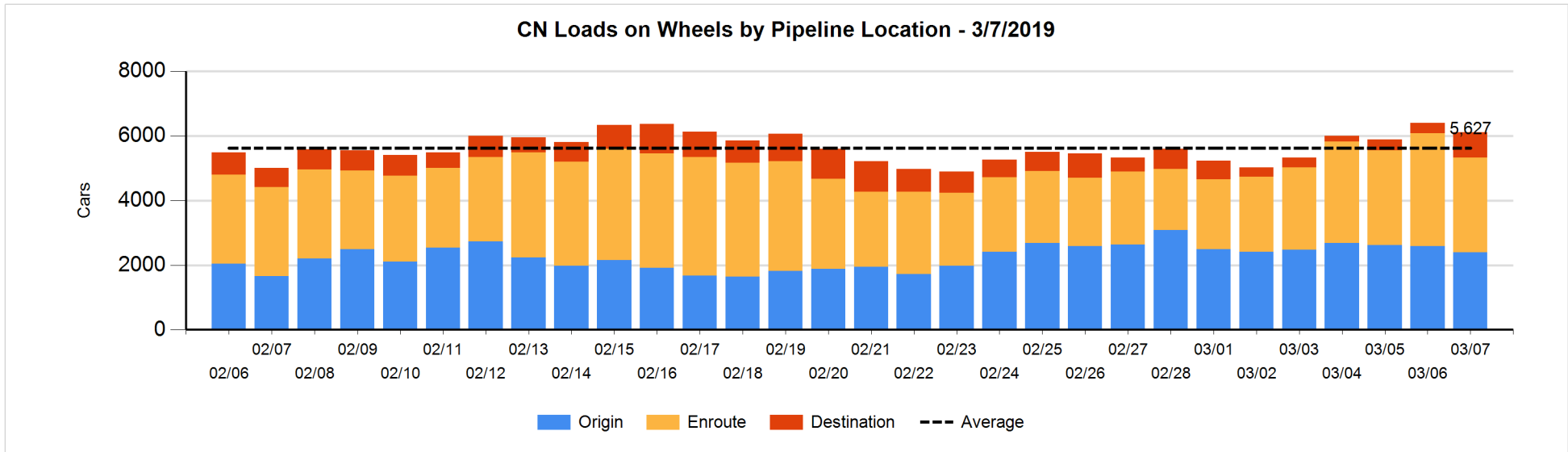


**Daily Loads on Wheels By Pipeline Location - 3/7/2019**

|                      | E Canada | Prince Rupert | Thunder Bay | USA/MEX | Vancouver | Total |
|----------------------|----------|---------------|-------------|---------|-----------|-------|
| CN                   |          |               |             |         |           |       |
| Origin               | 291      | 931           |             | 59      | 1,121     | 2,402 |
| Enroute              | 455      | 695           |             | 116     | 1,654     | 2,920 |
| Destination          | 115      | 276           | 5           | 26      | 362       | 784   |
|                      | 861      | 1,902         | 5           | 201     | 3,137     | 6,106 |
| CP                   |          |               |             |         |           |       |
| Origin               | 228      |               | 1           | 209     | 1,834     | 2,272 |
| Enroute              | 405      |               | 164         | 351     | 1,612     | 2,532 |
| Destination          |          |               | 4           |         | 416       | 420   |
|                      | 633      |               | 169         | 560     | 3,862     | 5,224 |
| US Rail / Short Line |          |               |             |         |           |       |
| Origin               |          |               |             |         |           |       |
| Enroute              | 4        |               |             | 67      |           | 71    |
| Destination          |          |               |             | 65      | 28        | 93    |
|                      | 4        |               |             | 132     | 28        | 164   |

**Change in Daily Loads on Wheels By Pipeline Location - Prior 24 Hours**

|                      | E Canada | Prince Rupert | Thunder Bay | USA/MEX | Vancouver | Total |
|----------------------|----------|---------------|-------------|---------|-----------|-------|
| CN                   |          |               |             |         |           |       |
| Origin               | -100     | 21            |             | -1      | -100      | -180  |
| Enroute              | 73       | -447          |             | 1       | -213      | -586  |
| Destination          | 5        | 261           | 0           | 0       | 209       | 475   |
|                      | -22      | -165          | 0           | 0       | -104      | -291  |
| CP                   |          |               |             |         |           |       |
| Origin               | -4       |               | 0           | 3       | -98       | -99   |
| Enroute              | -9       |               | 0           | -38     | 34        | -13   |
| Destination          | -1       |               | 0           |         | 155       | 154   |
|                      | -14      |               | 0           | -35     | 91        | 42    |
| US Rail / Short Line |          |               |             |         |           |       |
| Origin               |          |               |             |         |           |       |
| Enroute              | 0        |               |             | 17      |           | 17    |
| Destination          | -1       |               |             | -29     | -10       | -40   |
|                      | -1       |               |             | -12     | -10       | -23   |

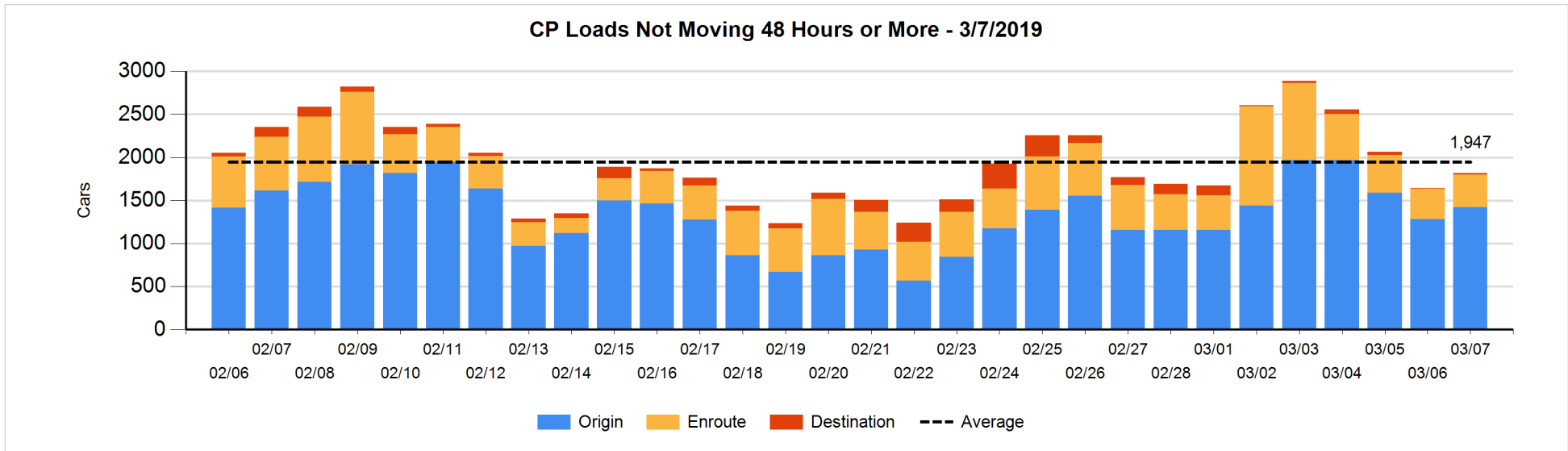
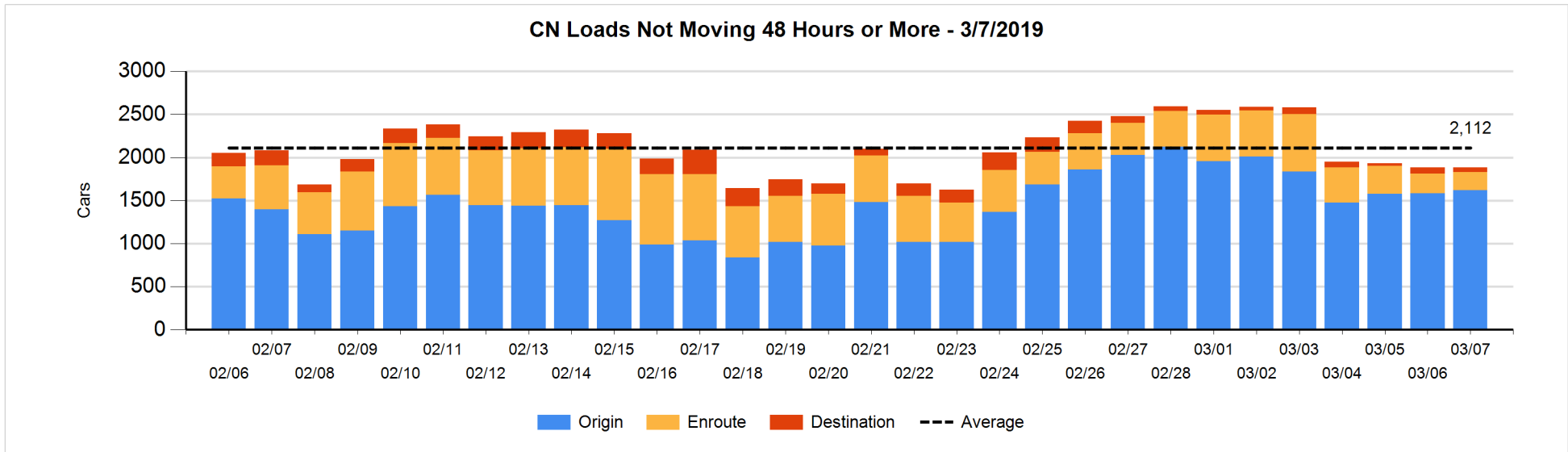


**Loads Not Moving 48 Hours or More - 3/7/2019**

|                      | E Canada | Prince Rupert | Thunder Bay | USA/MEX | Vancouver | Total |
|----------------------|----------|---------------|-------------|---------|-----------|-------|
| CN                   |          |               |             |         |           |       |
| Origin               | 190      | 710           |             | 50      | 672       | 1622  |
| Enroute              | 85       | 48            |             | 11      | 66        | 210   |
| Destination          | 28       |               | 5           | 13      | 4         | 50    |
|                      | 303      | 758           | 5           | 74      | 742       | 1882  |
| CP                   |          |               |             |         |           |       |
| Origin               | 3        |               | 1           | 110     | 1308      | 1422  |
| Enroute              | 33       |               |             | 54      | 288       | 375   |
| Destination          |          |               | 4           |         | 17        | 21    |
|                      | 36       |               | 5           | 164     | 1613      | 1818  |
| US Rail / Short Line |          |               |             |         |           |       |
| Origin               |          |               |             |         |           |       |
| Enroute              | 4        |               |             | 14      |           | 18    |
| Destination          |          |               |             | 41      | 24        | 65    |
|                      | 4        |               |             | 55      | 24        | 83    |

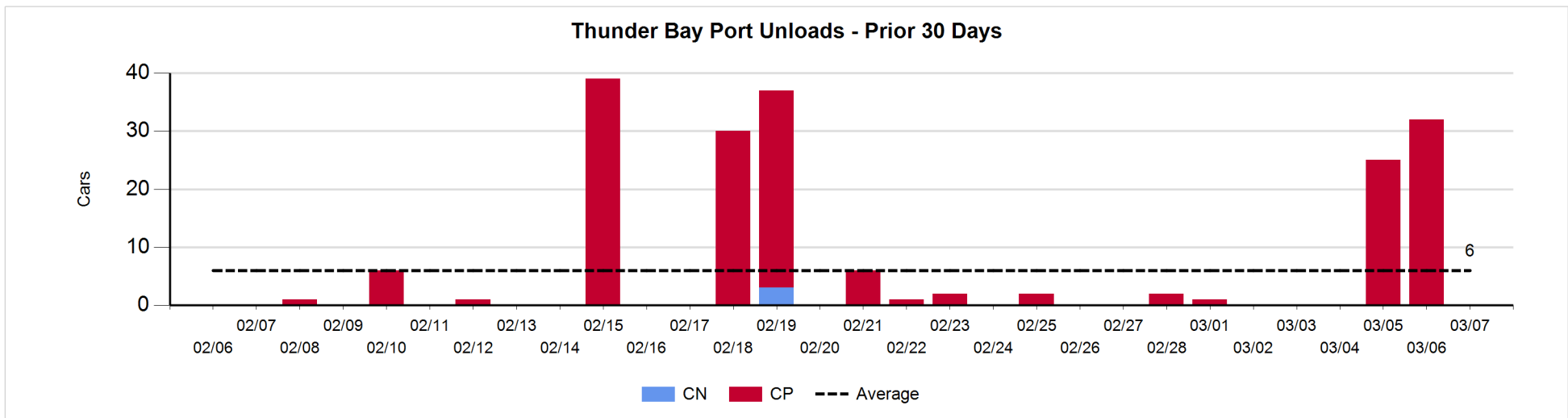
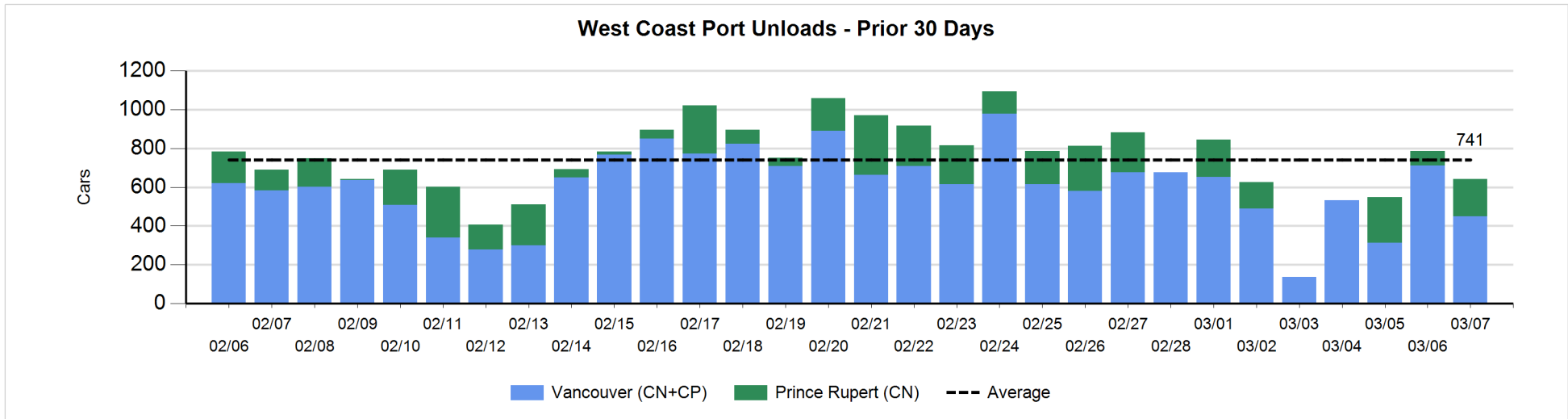
**Change in Loads Not Moving 48 Hours or More - 3/7/2019**

|                      | E Canada | Prince Rupert | Thunder Bay | USA/MEX | Vancouver | Total |
|----------------------|----------|---------------|-------------|---------|-----------|-------|
| CN                   |          |               |             |         |           |       |
| Origin               | 53       | 184           |             | 0       | -197      | 40    |
| Enroute              | -31      | 5             |             | 2       | 4         | -20   |
| Destination          | -7       | -9            | 5           | 0       | -8        | -19   |
|                      | 15       | 180           | 5           | 2       | -201      | 1     |
| CP                   |          |               |             |         |           |       |
| Origin               | -4       |               | 1           | 26      | 119       | 142   |
| Enroute              | 5        |               |             | 11      | 0         | 16    |
| Destination          |          |               | 0           |         | 17        | 17    |
|                      | 1        |               | 1           | 37      | 136       | 175   |
| US Rail / Short Line |          |               |             |         |           |       |
| Origin               |          |               |             |         |           |       |
| Enroute              | 0        |               |             | -5      |           | -5    |
| Destination          |          |               |             | -5      | -4        | -9    |
|                      | 0        |               |             | -10     | -4        | -14   |



Port Unloads - 3/7/2019

|    | Prince Rupert | Vancouver | West Coast Total | Thunder Bay | Total |
|----|---------------|-----------|------------------|-------------|-------|
| CN | 193           | 164       | 357              |             | 357   |
| CP |               | 284       | 284              |             | 284   |
|    | 193           | 448       | 641              |             | 641   |





**Port Terminal Status**

**Vancouver**

Daily Activity for 3/7/2019

|     | Cars Arrived | Cars Received in Interchange | Cars Delivered in Interchange | Cars Placed for Unloading | Loads on Wheels at Destination As of 3/7/2019 |
|-----|--------------|------------------------------|-------------------------------|---------------------------|---|
| CN  | 366          | 8                            | 103                           | 275                       | 362   |
| CP  | 447          | 103                          | 9                             | 483                       | 416   |
| SRY |              | 1                            |                               | 6                         | 28  |

**Port Unloads**

|     | 03/07 | 03/06 | Week To Date | Last Week |
|-----|-------|-------|--------------|-----------|
| CN  | 164   | 214   | 767          | 2,127     |
| CP  | 284   | 496   | 1,237        | 1,698     |
| SRY | 12    | 9     | 50           | 63        |

**Age Profile of Loaded Cars Waiting Placement for Unloading**

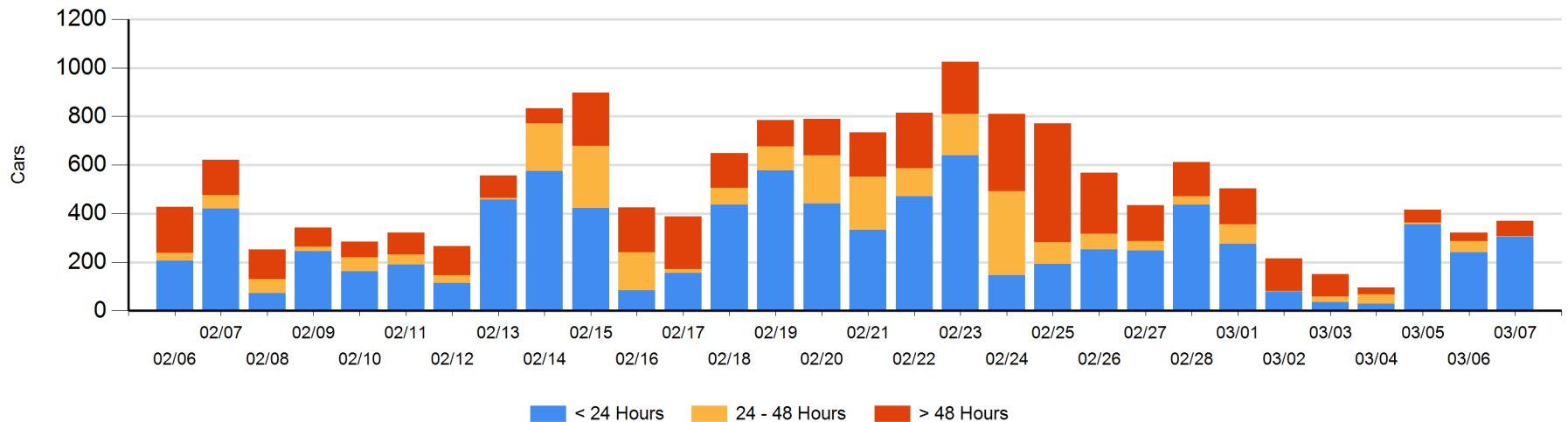
**Today**

|     | < 24 Hrs | 24 - 48 Hrs | > 48-72 Hrs | > 72 Hrs | Total On Hand |
|-----|----------|-------------|-------------|----------|---------------|
| CN  | 166      |             | 1           | 8        | 175           |
| CP  | 139      | 3           | 38          | 16       | 196           |
| SRY |          |             |             |          | 0             |

**Change in Last 24 Hours**

|     | < 24 Hrs | 24-48 Hrs | 48 - 72 Hrs | > 72 Hrs |
|-----|----------|-----------|-------------|----------|
| CN  | 98       | -7        | 1           | -2       |
| CP  | -33      | -38       | 38          | -8       |
| SRY |          |           |             |          |

**Loaded Cars on Hand Vancouver Waiting for Placement - Last 30 Days All Railways**



**Port Terminal Status**

**Prince Rupert**

**Daily Activity for 3/7/2019**

|    | Cars Arrived | Cars Received in Interchange | Cars Delivered in Interchange | Cars Placed for Unloading | Loads on Wheels at Destination As of 3/7/2019 |
|----|--------------|------------------------------|-------------------------------|---------------------------|---|
| CN | 454          |                              |                               | 454                       | 276   |

**Port Unloads**

|    | 03/07 | 03/06 | Week To Date | Last Week |
|----|-------|-------|--------------|-----------|
| CN | 193   | 77    | 505          | 940       |

**Age Profile of Loaded Cars Waiting Placement for Unloading**

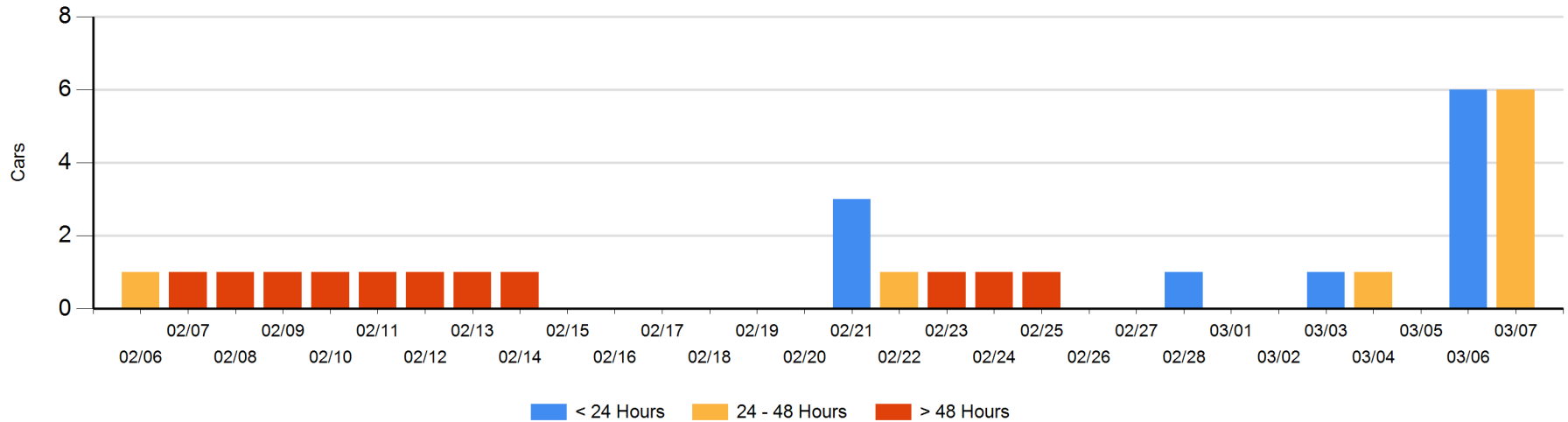
**Today**

|    | < 24 Hrs | 24 - 48 Hrs | > 48-72 Hrs | > 72 Hrs | Total On Hand |
|----|----------|-------------|-------------|----------|---------------|
| CN |          | 6           |             |          | 6             |

**Change in Last 24 Hours**

|    | < 24 Hrs | 24-48 Hrs | 48 - 72 Hrs | > 72 Hrs |
|----|----------|-----------|-------------|----------|
| CN | -6       | 6         |             |          |

**Loaded Cars on Hand Prince Rupert Waiting for Placement - Last 30 Days All Railways**



**Port Terminal Status**

**Thunder Bay**

Daily Activity for 3/7/2019

|    | Cars Arrived | Cars Received in Interchange | Cars Delivered in Interchange | Cars Placed for Unloading | Loads on Wheels at Destination As of 3/7/2019 |
|----|--------------|------------------------------|-------------------------------|---------------------------|---|
| CN |              |                              |                               |                           | 5   |
| CP |              |                              |                               |                           | 4   |

**Port Unloads**

|    | 03/07 | 03/06 | Week To Date | Last Week |
|----|-------|-------|--------------|-----------|
| CN |       |       |              |           |
| CP |       | 32    | 57           | 5         |

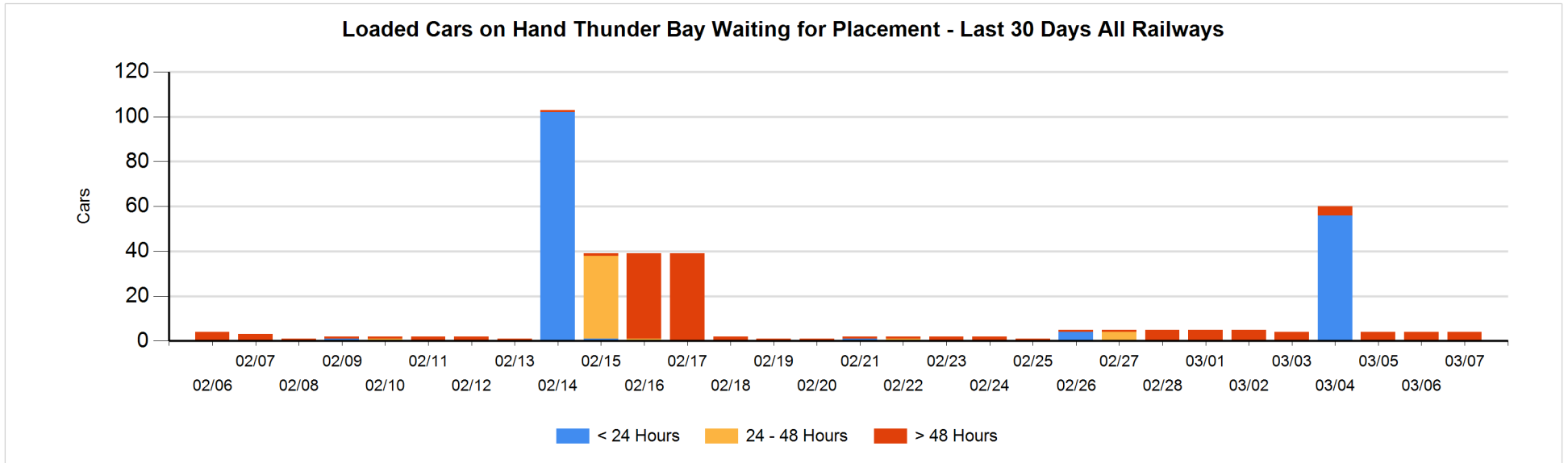
**Age Profile of Loaded Cars Waiting Placement for Unloading**

**Today**

|    | < 24 Hrs | 24 - 48 Hrs | > 48-72 Hrs | > 72 Hrs | Total On Hand |
|----|----------|-------------|-------------|----------|---------------|
| CN |          |             |             | 4        | 4             |
| CP |          |             |             |          | 0             |

**Change in Last 24 Hours**

|    | < 24 Hrs | 24-48 Hrs | 48 - 72 Hrs | > 72 Hrs |
|----|----------|-----------|-------------|----------|
| CN |          |           |             | 0        |
| CP |          |           |             |          |



## Measurement Definitions

|                                 |   |
|---------------------------------|---|
| Loads on Wheels                 | <p>Count of loaded rail cars including all rail cars that have been released loaded at origin and have not been reported by the railway as unloaded at destination.</p> <p>Counts include all rail cars (hopper cars and boxcars) moving within a pipeline.</p>   |
| Loads Not Moving                | <p>Loaded rail cars for which the railways have not reported a movement event for 48 hours or more whether the rail car is at origin, enroute or at destination.</p>  |
| Port Unloads                    | <p>Count of rail cars reported by railways as unloaded at the western port destinations of Vancouver, Prince Rupert and Thunder Bay.</p> <p>Unload counts include all rail cars (hopper cars and boxcars) unloaded by all receivers including major port terminals, transloaders and other receivers.</p>   |
| Cars Arrived                    | <p>Count of rail cars reported as arrived at the destination railway terminal.</p>  |
| Cars Received in Interchange    | <p>Count of rail cars received in interchange by each railway within a destination railway terminal. Interchange activity is tracked for the Vancouver and Thunder Bay pipelines as applicable.</p>   |
| Cars Delivered in Interchange   | <p>Count of rail cars delivered in interchange by each railway within a destination railway terminal. Interchange activity is tracked for the Vancouver and Thunder Bay pipelines as applicable.</p>  |
| Cars Placed for Unloading       | <p>Count of rail cars reported by the railways as placed loaded at the receiver's facility for unloading.</p>   |
| Loads on Wheels at Destination  | <p>Count of rail cars that remain under load within the destination railway terminal including rail cars that have been reported as placed for unloading but not yet reported as unloaded.</p>  |
| Waiting Placement for Unloading | <p>Count of rail cars that have been reported as arrived at the destination railway terminal but not reported as placed for unloading by the railway.</p> <p>For the Ports of Vancouver, Prince Rupert and Thunder Bay the count of rail cars waiting placement for unloading is categorized by age – i.e. the elapsed time from arrival at destination to the current report date.</p> |