

## SPEED READ

- Loads on wheels decreased overnight, reflecting a decline in both CN and CP volumes. On a net basis, volumes decreased due to reduced traffic across all corridors other than E. Canada.
- Network fluidity deteriorated overnight, led by an increase in idle car counts on CP by 32% (+518) offset by a decline in idle car counts on CN by 18% (-429). The total count of cars for 4+ days on both railways increased 19% (+406) overnight - currently at 2,583 cars.
- Week 32 unloads finished ahead of prior week's performance by 150 unloads, reflecting improved week over week performance across all three major ports - Vancouver, Thunder Bay and Prince Rupert.

---

## Loads on Wheels

- Loads on wheels decreased for the fourth consecutive day, down 4% (-419) overnight, due to reduced volumes on both CN and CP - combined total at 10,544 and 2% below the trailing 30-day average.
- On a net basis, the decline in loads on wheels reflects reduced volumes across all corridors other than E. Canada.
- CN volumes fell for the fourth consecutive day, down 2% (-90) overnight, with reduced volumes across all corridors other than E. Canada. System wide CN loads on wheels currently at 5,824 and 2% above the trailing 30-day average.
- CP volumes decreased 4% (-207) overnight and have now decreased for the third consecutive day, driven by a decline in volumes across all corridors other than E. Canada. CP system wide loads on wheels currently at 4,514 and 6% below the trailing 30-day average.
- Vancouver now at 6,290, decreased for the fifth consecutive day, down 6% (-385) overnight, now 5% below the trailing 30-day average.
- The Prince Rupert pipeline currently at 1,698, decreased for the fourth consecutive day, down 2% (-41) overnight, and 2% above the trailing 30-day average.
- Thunder Bay volumes remained unchanged (0) overnight - currently at 174 and 115% above the trailing 30-day average., with 97% of traffic moving on CP.

## Hopper Car Rationing

- CN rationed 1,095 hopper cars in week 31.

## Loads Not Moving

- **The count of cars not moving for 48+ hours rose 2% (+89) overnight, reflecting higher counts on CP offset by reduced counts on CN. Idle car counts currently at 4,068 and 1% above the trailing 30-day average.**
- CN
  - **The count of idle cars for 48+ hours fell 18% (-429) overnight - currently at 1,919 cars.**
  - The number of cars idle for 4+ days gained 8% (+106) overnight and have now increased for the fourth consecutive day - currently at 1,390 cars.
  - The count of cars not moving for 7+ days decreased 12% (-55) overnight and have now decreased for the third consecutive day - currently at 405 cars.
  - Vancouver represents 52% of all idle cars.
  - In total 74% of all idle cars are dwelling at origin locations.
- CP
  - **CP idle car counts for 48+ hours increased 32% (+518) overnight - currently at 2,149 cars.**
  - The number of cars idle for 4+ days rose 34% (+300) overnight - currently at 1,193 cars.

- The number of cars idle for 7+ days decreased for the third consecutive day, down 4% (-26) overnight - now at 650 cars.
- Vancouver accounts for 70% of all idle cars.
- In total 62% of all idle cars are dwelling at origin locations.

### **Port Performance**

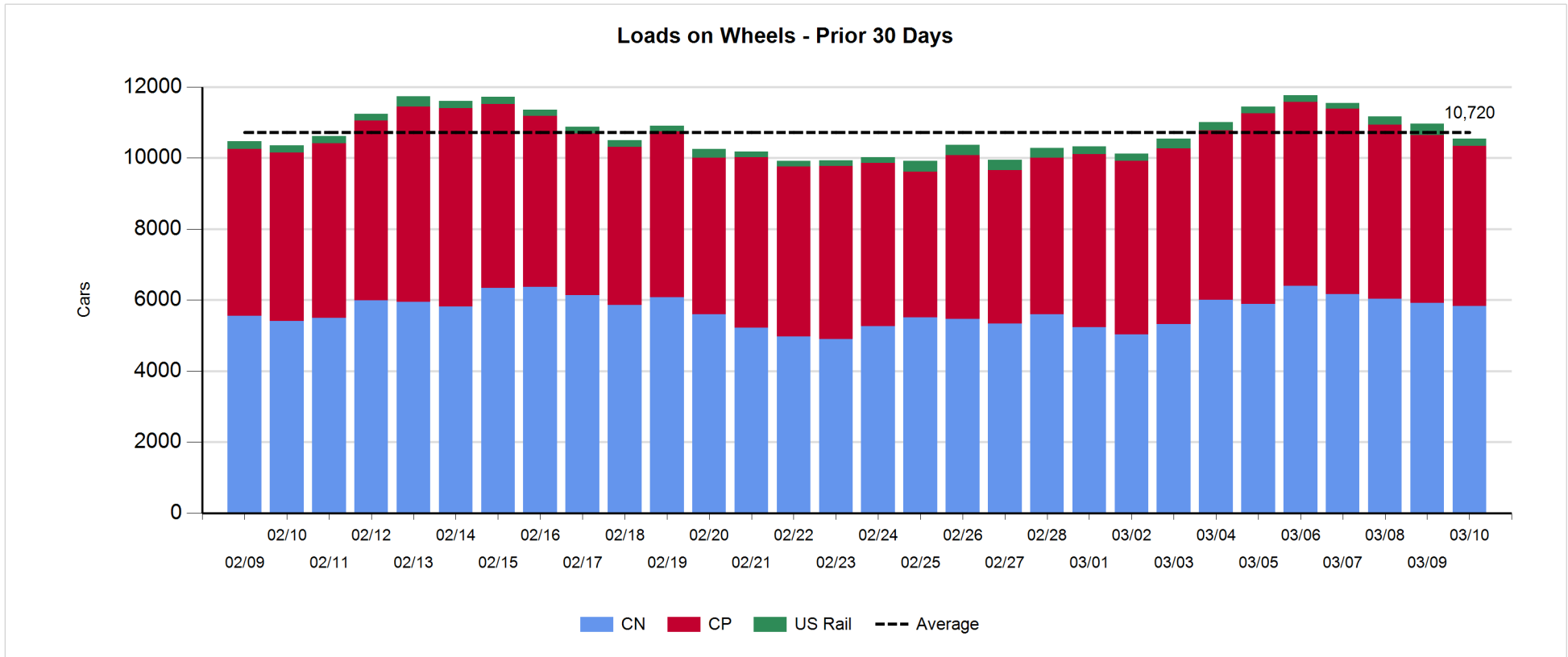
- CN and CP reported a total of 705 cars unloaded at the three major ports, now 6% below the trailing 30-day average. Week 32 unloads finished ahead of last week's pace by 150 unloads, reflecting higher unloads across all three major ports - Vancouver, Thunder Bay and Prince Rupert.
- Vancouver
  - 664 unloads reported by CN and CP at the Port of Vancouver; CN - 362 and CP - 302. Week 32 unloads finished ahead of last week's performance by more than 50 unloads.
  - There are 950 cars on site at Vancouver with more than 1,050 cars arriving at the port in the last 24 hours.
  - CN and CP have 1,250 cars in British Columbia en route to Vancouver, with 900 cars at Kamloops and west, and 60% of traffic moving on CP.
- Prince Rupert
  - Prince Rupert reported 41 unloads, finished ahead of last week's unloads by nearly 50 unloads.
  - Loads on wheels now above 1,000 cars - currently at 1,698 cars.
  - There are more than 200 cars west of Jasper en route to Prince Rupert.
  - There are around 200 cars on site at Prince Rupert with 100 cars arriving at the port in the last 24 hours.
- Thunder Bay
  - Zero unloads were reported at Thunder Bay yesterday. Week 32 unloads concluded ahead of last week's pace by 50 unloads.
  - There are more than 150 cars on site at Thunder Bay with zero cars arriving at the port in the prior 24 hours.
  - There are 1 car en route to Thunder Bay from Winnipeg and east.

**Daily Loads on Wheels - 3/10/2019**

	E Canada	Prince Rupert	Thunder Bay	USA/MEX	Vancouver	Total
CN	999	1,698	5	172	2,950	5,824
CP	619		169	420	3,306	4,514
Short Line	35				34	69
US Rail				137		137
	1,653	1,698	174	729	6,290	10,544

**Change in Loads on Wheels - Prior 24 Hours**

	E Canada	Prince Rupert	Thunder Bay	USA/MEX	Vancouver	Total
CN	149	-41	0	-10	-188	-90
CP	65		0	-75	-197	-207
Short Line	-111				0	-111
US Rail				-11		-11
	103	-41	0	-96	-385	-419

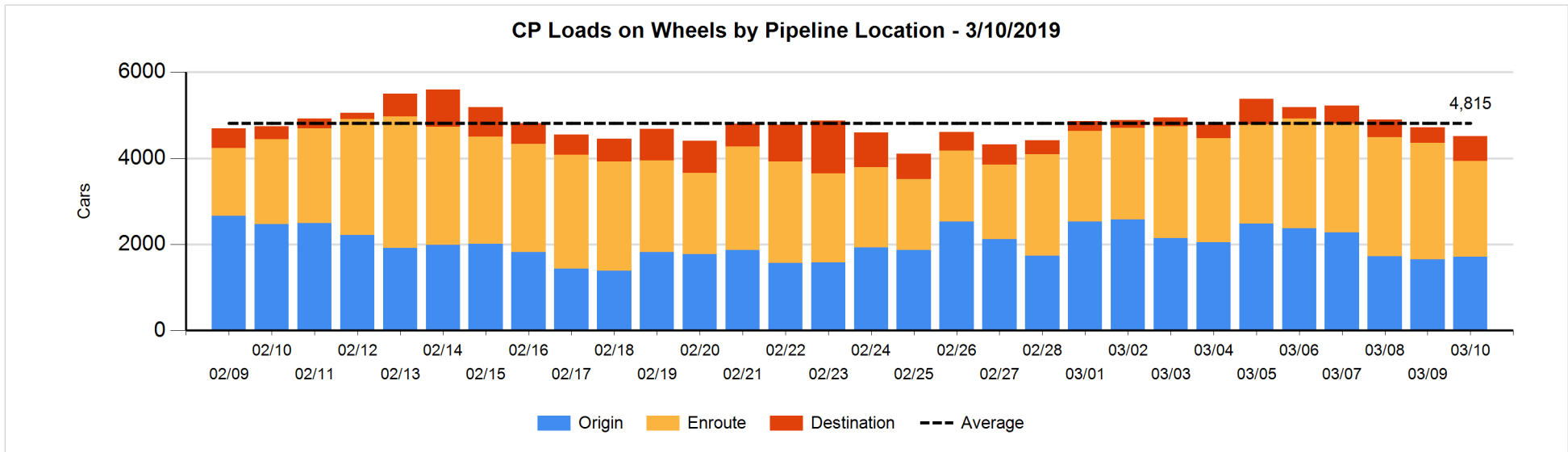
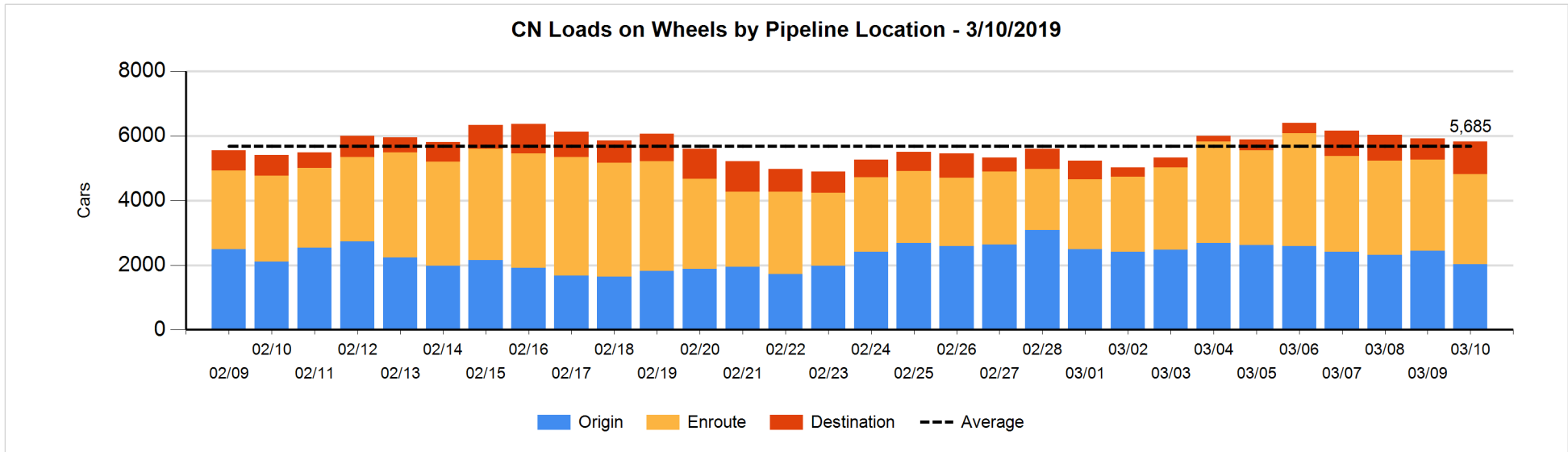


**Daily Loads on Wheels By Pipeline Location - 3/10/2019**

	E Canada	Prince Rupert	Thunder Bay	USA/MEX	Vancouver	Total
CN						
Origin	230	571		25	1,206	2,032
Enroute	496	941		134	1,218	2,789
Destination	273	186	5	13	526	1,003
	999	1,698	5	172	2,950	5,824
CP						
Origin	275		1	114	1,321	1,711
Enroute	344		1	284	1,592	2,221
Destination			167	22	393	582
	619		169	420	3,306	4,514
US Rail / Short Line						
Origin						
Enroute	4			92		96
Destination	31			45	34	110
	35			137	34	206

**Change in Daily Loads on Wheels By Pipeline Location - Prior 24 Hours**

	E Canada	Prince Rupert	Thunder Bay	USA/MEX	Vancouver	Total
CN						
Origin	-26	-376		-13	4	-411
Enroute	93	260		-1	-384	-32
Destination	82	75	0	4	192	353
	149	-41	0	-10	-188	-90
CP						
Origin	0		0	-6	68	62
Enroute	65		0	-69	-486	-490
Destination			0	0	221	221
	65		0	-75	-197	-207
US Rail / Short Line						
Origin						
Enroute	0			36		36
Destination	-111			-47	0	-158
	-111			-11	0	-122

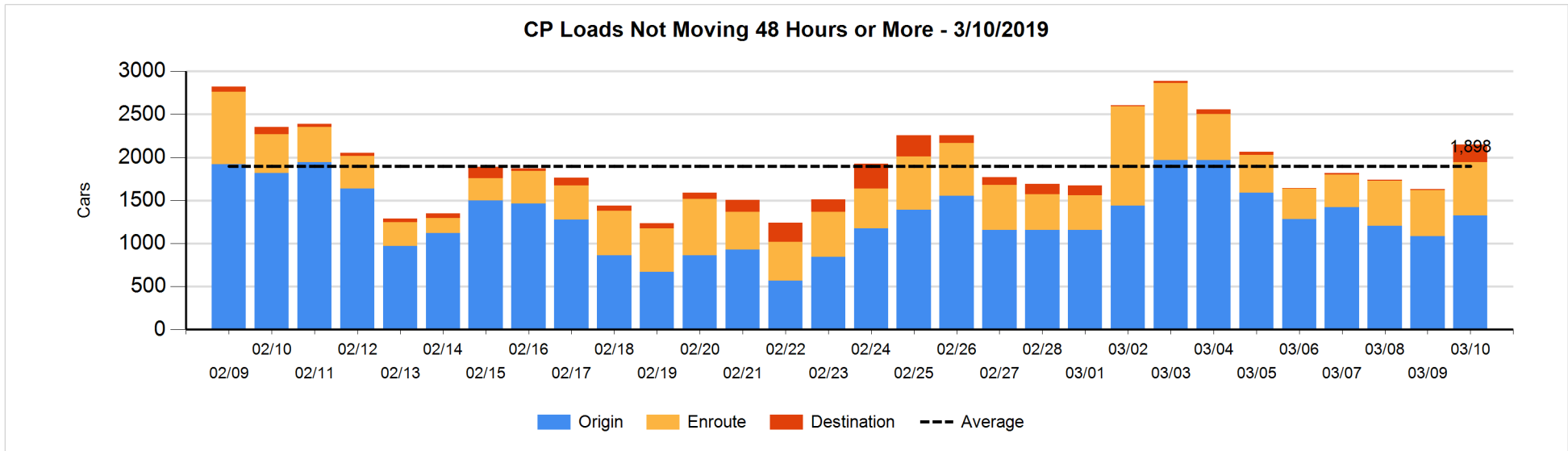
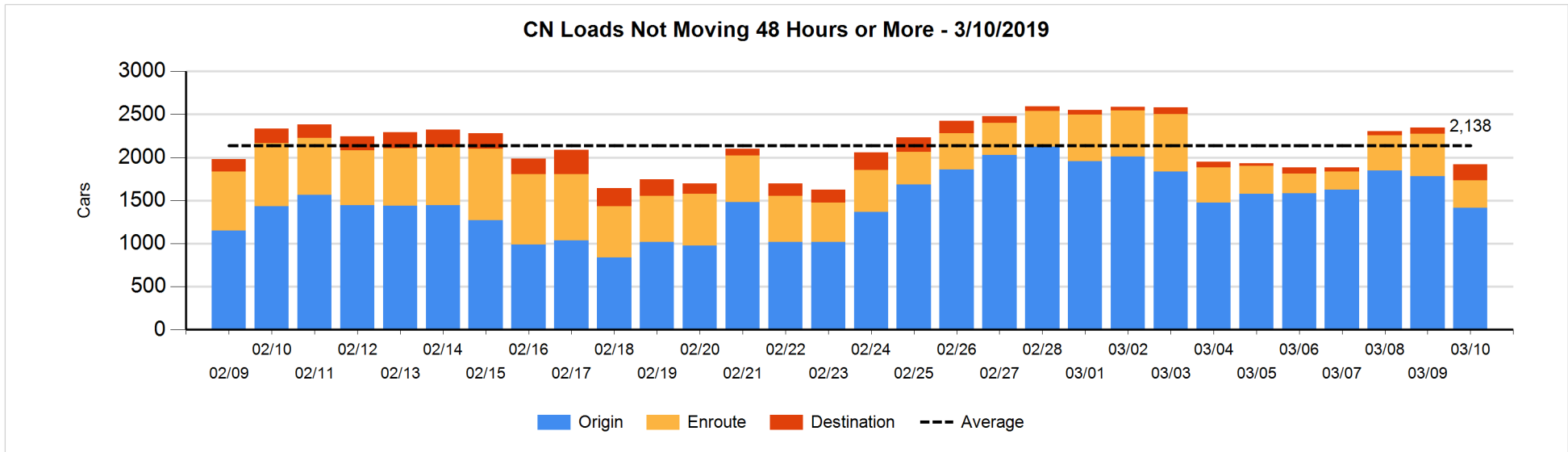


**Loads Not Moving 48 Hours or More - 3/10/2019**

	E Canada	Prince Rupert	Thunder Bay	USA/MEX	Vancouver	Total
CN						
Origin	126	468		25	794	1413
Enroute	78	25		16	203	322
Destination	76	85	5	9	9	184
	280	578	5	50	1006	1919
CP						
Origin	275		1	9	1038	1323
Enroute	110		1	54	458	623
Destination			167	22	14	203
	385		169	85	1510	2149
US Rail / Short Line						
Origin						
Enroute	4			22		26
Destination	31			42	16	89
	35			64	16	115

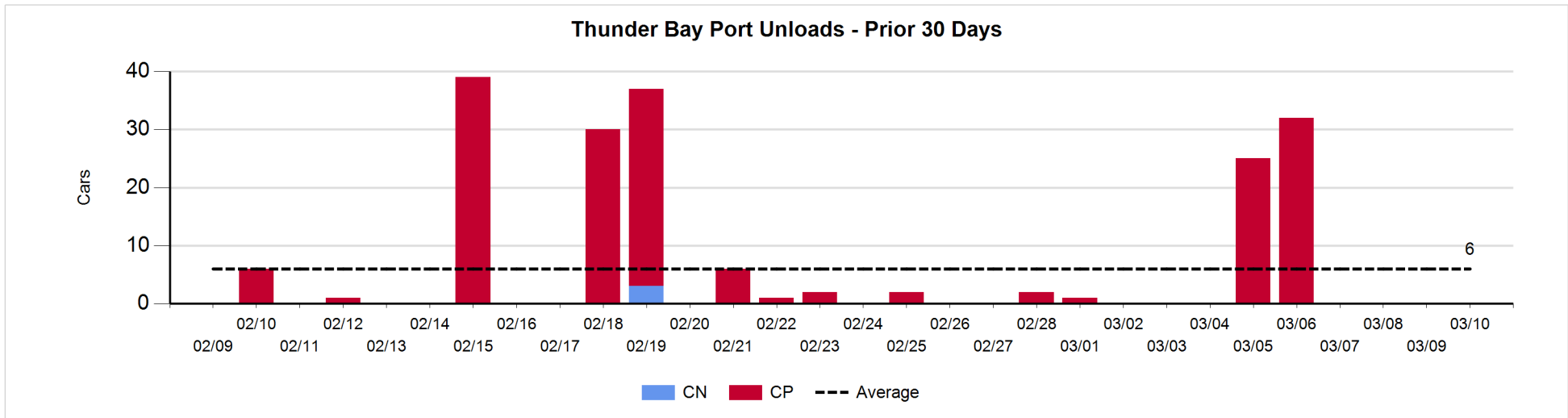
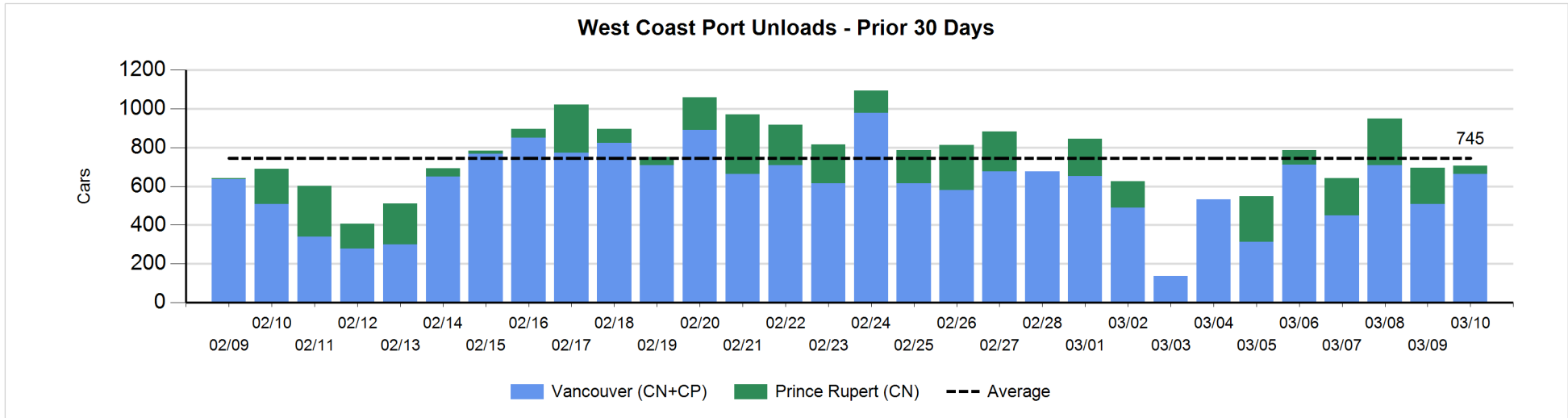
**Change in Loads Not Moving 48 Hours or More - 3/10/2019**

	E Canada	Prince Rupert	Thunder Bay	USA/MEX	Vancouver	Total
CN						
Origin	-75	-282		-9	-4	-370
Enroute	-7	-103		6	-66	-170
Destination	15	85	5	0	6	111
	-67	-300	5	-3	-64	-429
CP						
Origin	48		0	-4	195	239
Enroute	5		0	-46	129	88
Destination			163	22	6	191
	53		163	-28	330	518
US Rail / Short Line						
Origin						
Enroute	0			4		4
Destination	31			3	3	37
	31			7	3	41



**Port Unloads - 3/10/2019**

	Prince Rupert	Vancouver	West Coast Total	Thunder Bay	Total
CN	41	362	403		403
CP		302	302		302
	41	664	705		705





**Port Terminal Status**

**Vancouver**

Daily Activity for 3/10/2019

	Cars Arrived	Cars Received in Interchange	Cars Delivered in Interchange	Cars Placed for Unloading	Loads on Wheels at Destination As of 3/10/2019
CN	422	206	288	291	526
CP	655	288	207	213	393
SRY		1			34

**Port Unloads**

	03/10	03/09	Week To Date	Last Week
CN	362	259	1,758	2,127
CP	302	248	2,127	1,698
SRY		7	70	63

**Age Profile of Loaded Cars Waiting Placement for Unloading**

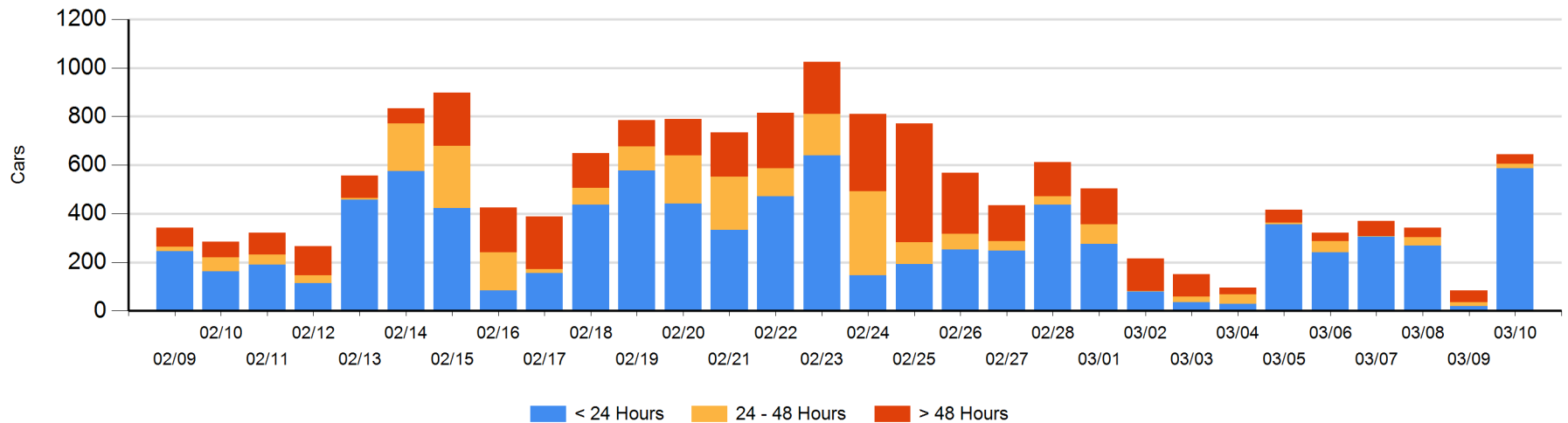
**Today**

	< 24 Hrs	24 - 48 Hrs	> 48-72 Hrs	> 72 Hrs	Total On Hand
CN	210			1	211
CP	377	17	7	32	433
SRY					0

**Change in Last 24 Hours**

	< 24 Hrs	24-48 Hrs	48 - 72 Hrs	> 72 Hrs
CN	210	-9		-1
CP	357	10	-24	18
SRY				

**Loaded Cars on Hand Vancouver Waiting for Placement - Last 30 Days All Railways**



**Port Terminal Status**

**Prince Rupert**

Daily Activity for 3/10/2019

	Cars Arrived	Cars Received in Interchange	Cars Delivered in Interchange	Cars Placed for Unloading	Loads on Wheels at Destination As of 3/10/2019
CN	91			115	186

**Port Unloads**

	03/10	03/09	Week To Date	Last Week
CN	41	188	973	940

**Age Profile of Loaded Cars Waiting Placement for Unloading**

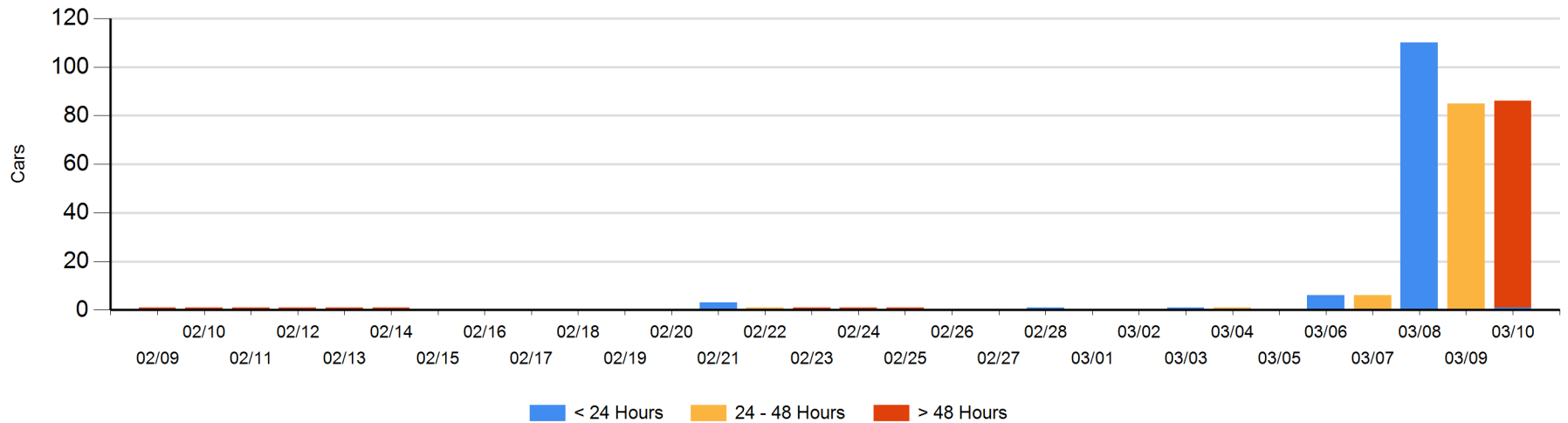
**Today**

	< 24 Hrs	24 - 48 Hrs	> 48-72 Hrs	> 72 Hrs	Total On Hand
CN	1		85		86

**Change in Last 24 Hours**

	< 24 Hrs	24-48 Hrs	48 - 72 Hrs	> 72 Hrs
CN	1	-85	85	

Loaded Cars on Hand Prince Rupert Waiting for Placement - Last 30 Days All Railways



**Port Terminal Status**

**Thunder Bay**

Daily Activity for 3/10/2019

	Cars Arrived	Cars Received in Interchange	Cars Delivered in Interchange	Cars Placed for Unloading	Loads on Wheels at Destination As of 3/10/2019
CN					5
CP					167

**Port Unloads**

	03/10	03/09	Week To Date	Last Week
CN				
CP			57	5

**Age Profile of Loaded Cars Waiting Placement for Unloading**

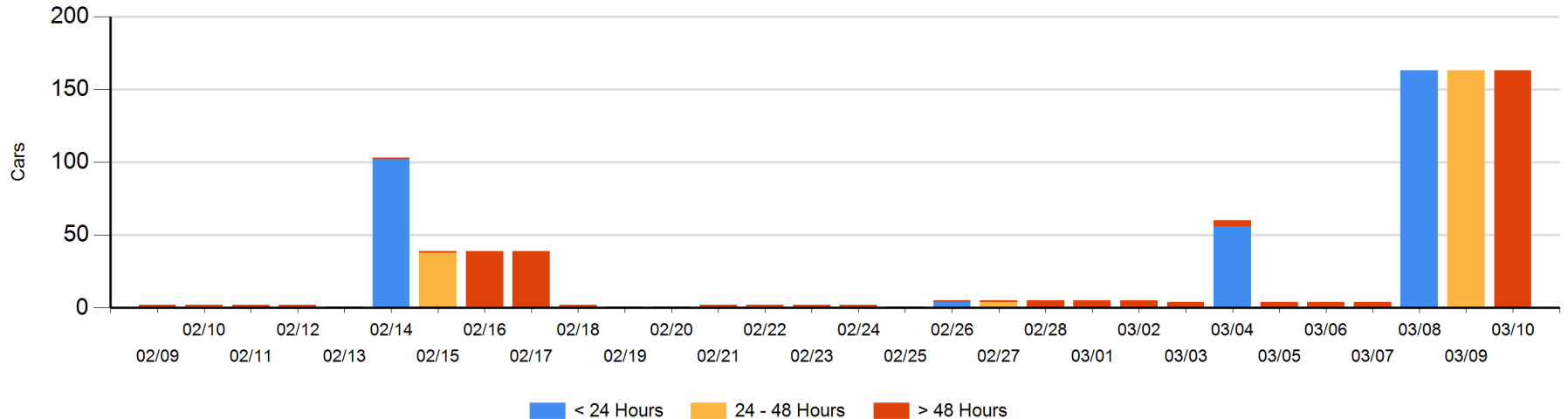
**Today**

	< 24 Hrs	24 - 48 Hrs	> 48-72 Hrs	> 72 Hrs	Total On Hand
CN					0
CP			163		163

**Change in Last 24 Hours**

	< 24 Hrs	24-48 Hrs	48 - 72 Hrs	> 72 Hrs
CN				
CP		-163	163	

**Loaded Cars on Hand Thunder Bay Waiting for Placement - Last 30 Days All Railways**



## Measurement Definitions

Loads on Wheels	<p>Count of loaded rail cars including all rail cars that have been released loaded at origin and have not been reported by the railway as unloaded at destination.</p> <p>Counts include all rail cars (hopper cars and boxcars) moving within a pipeline.</p>
Loads Not Moving	<p>Loaded rail cars for which the railways have not reported a movement event for 48 hours or more whether the rail car is at origin, enroute or at destination.</p>
Port Unloads	<p>Count of rail cars reported by railways as unloaded at the western port destinations of Vancouver, Prince Rupert and Thunder Bay.</p> <p>Unload counts include all rail cars (hopper cars and boxcars) unloaded by all receivers including major port terminals, transloaders and other receivers.</p>
Cars Arrived	<p>Count of rail cars reported as arrived at the destination railway terminal.</p>
Cars Received in Interchange	<p>Count of rail cars received in interchange by each railway within a destination railway terminal. Interchange activity is tracked for the Vancouver and Thunder Bay pipelines as applicable.</p>
Cars Delivered in Interchange	<p>Count of rail cars delivered in interchange by each railway within a destination railway terminal. Interchange activity is tracked for the Vancouver and Thunder Bay pipelines as applicable.</p>
Cars Placed for Unloading	<p>Count of rail cars reported by the railways as placed loaded at the receiver's facility for unloading.</p>
Loads on Wheels at Destination	<p>Count of rail cars that remain under load within the destination railway terminal including rail cars that have been reported as placed for unloading but not yet reported as unloaded.</p>
Waiting Placement for Unloading	<p>Count of rail cars that have been reported as arrived at the destination railway terminal but not reported as placed for unloading by the railway.</p> <p>For the Ports of Vancouver, Prince Rupert and Thunder Bay the count of rail cars waiting placement for unloading is categorized by age – i.e. the elapsed time from arrival at destination to the current report date.</p>