

**SPEED READ**

- Loads on wheels increased overnight, marking a rise in both CN and CP volumes. On a net basis, volumes rose due to higher traffic in the Vancouver, USA/MEX and E. Canada corridors offset by reduced volumes in the Thunder Bay and Prince Rupert corridors.
- Network fluidity improved overnight, led by a decline in idle car counts on CP by 10% (-214) offset by an increase in idle car counts on CN by 3% (+54). The total count of cars for 4+ days on both railways increased 5% (+118) overnight and have now increased for the third consecutive day - currently at 2,678 cars.
- One day in Week 33 unloads now ahead of prior week's performance by more than 600 unloads, reflecting improved week over week performance across all three major ports - Vancouver, Thunder Bay and Prince Rupert.

**Loads on Wheels**

- Loads on wheels rose 4% (+415) overnight, due to higher traffic on both CN and CP - combined total at 10,964 and 2% above the trailing 30-day average.
- On a net basis, the increase in loads on wheels reflects higher volumes in the Vancouver, USA/MEX and E. Canada corridors offset by reduced volumes in the Thunder Bay and Prince Rupert corridors.
- CN volumes increased marginally by (+25) overnight, with higher volumes in the E. Canada and USA/MEX corridors offset by reduced volumes in the Vancouver and Prince Rupert corridors. System wide CN loads on wheels currently at 5,852 and 3% above the trailing 30-day average.
- CP volumes rose 9% (+397) overnight, driven by a rise in traffic in the Vancouver and USA/MEX corridors offset by a decline in volumes in the E. Canada and Thunder Bay corridors. CP system wide loads on wheels currently at 4,913 and 2% above the trailing 30-day average.
- Vancouver currently at 6,623, gained 5% (+331) overnight, now in line with the trailing 30-day average.
- The Prince Rupert pipeline presently at 1,675, declined for the fifth consecutive day, down 1% (-24) overnight, and 1% above the trailing 30-day average.
- Thunder Bay volumes declined significantly by 34% (-59) overnight - currently at 115 and 36% above the trailing 30-day average., with 96% of traffic moving on CP.

**Hopper Car Rationing**

- CN rationed 1,095 hopper cars in week 31.

**Loads Not Moving**

- **The count of cars not moving for 48+ hours fell 4% (-159) overnight, marking lower counts on CP offset by higher counts on CN. Idle car counts now at 3,887 and 3% below the trailing 30-day average.**
- CN
  - **The count of idle cars for 48+ hours rose 3% (+54) overnight - currently at 1,950 cars.**
  - The number of cars idle for 4+ days increased 3% (+41) overnight and have now increased for the fifth consecutive day - presently at 1,408 cars.
  - The count of cars not moving for 7+ days increased significantly by 90% (+345) overnight - presently at 727 cars.
  - Vancouver represents 52% of all idle cars.
  - In total 76% of all idle cars are dwelling at origin locations.
- CP
  - **CP idle car counts for 48+ hours declined 10% (-214) overnight - currently at 1,937 cars.**
  - The number of cars idle for 4+ days increased 6% (+77) overnight - currently at 1,270 cars.

- The number of cars idle for 7+ days declined for the fourth consecutive day, down 12% (-78) overnight - currently at 572 cars.
- Vancouver accounts for 66% of all idle cars.
- In total 63% of all idle cars are dwelling at origin locations.

### **Port Performance**

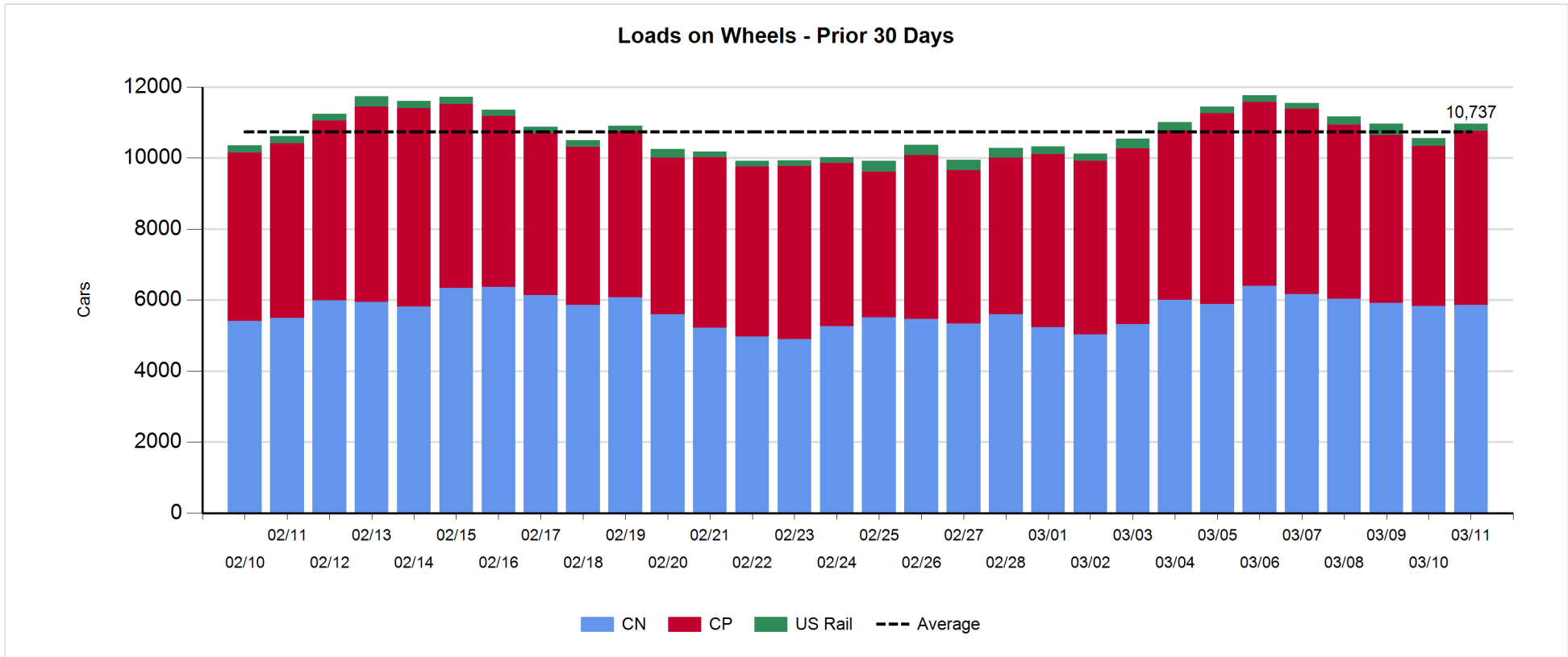
- CN and CP reported a total of 1,162 cars unloaded at the three major ports, the highest seen in the last 30 days, now 51% above the trailing 30-day average. One day in Week 33 unloads now ahead of last week's pace by more than 600 unloads, reflecting higher unloads across all three major ports - Vancouver, Thunder Bay and Prince Rupert.
- Vancouver
  - 812 unloads reported by CN and CP at the Port of Vancouver; CN - 403 and CP - 409. One day in Week 33 unloads are tracking ahead of last week's performance by more than 250 unloads.
  - There are 900 cars on site at Vancouver with more than 750 cars arriving at the port in the last 24 hours.
  - CN and CP have 1,150 cars in British Columbia en route to Vancouver, with more than 550 cars at Kamloops and west, and 76% of traffic moving on CP.
- Prince Rupert
  - Prince Rupert reported 291 unloads, now ahead of last week's unloads after one day by 300 unloads.
  - Loads on wheels now above 1,000 cars - now at 1,675 cars.
  - There are about 200 cars west of Jasper en route to Prince Rupert.
  - There are more than 50 cars on site at Prince Rupert with more than 150 cars arriving at the port in the last 24 hours.
- Thunder Bay
  - 59 unloads, the highest seen in the last 30 days, were reported at Thunder Bay yesterday. One day in Week 33 unloads are tracking ahead of last week's pace by 50 unloads.
  - There are more than 100 cars on site at Thunder Bay with zero cars arriving at the port in the prior 24 hours.
  - There are 1 car en route to Thunder Bay from Winnipeg and east.

**Daily Loads on Wheels - 3/11/2019**

	E Canada	Prince Rupert	Thunder Bay	USA/MEX	Vancouver	Total
CN	1,084	1,675	5	189	2,899	5,852
CP	545		110	566	3,692	4,913
Short Line	25				32	57
US Rail				142		142
	1,654	1,675	115	897	6,623	10,964

**Change in Loads on Wheels - Prior 24 Hours**

	E Canada	Prince Rupert	Thunder Bay	USA/MEX	Vancouver	Total
CN	85	-24	0	16	-52	25
CP	-74		-59	145	385	397
Short Line	-10				-2	-12
US Rail				5		5
	1	-24	-59	166	331	415

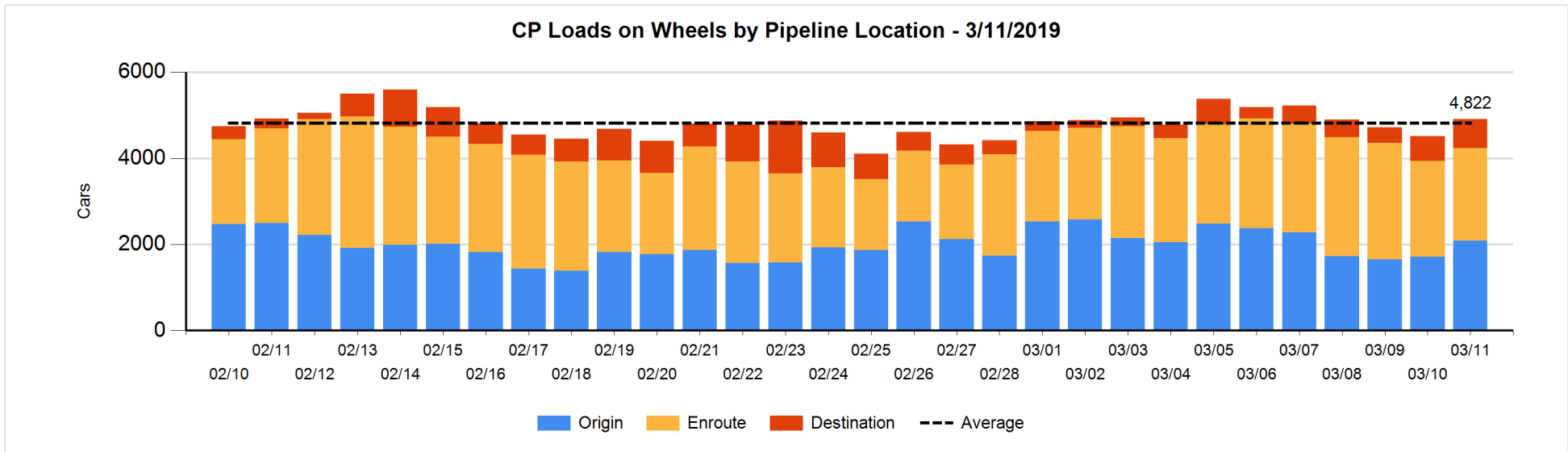
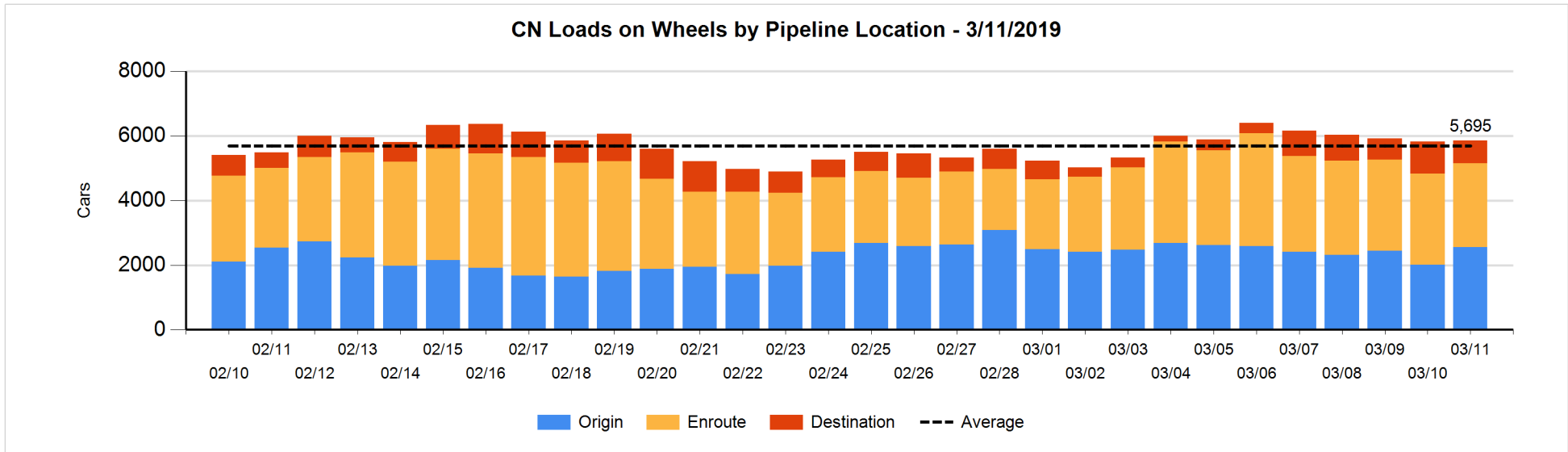


**Daily Loads on Wheels By Pipeline Location - 3/11/2019**

	E Canada	Prince Rupert	Thunder Bay	USA/MEX	Vancouver	Total
CN						
Origin	302	814		53	1,384	2,553
Enroute	506	790		119	1,188	2,603
Destination	276	71	5	17	327	696
	1,084	1,675	5	189	2,899	5,852
CP						
Origin	303		1	218	1,563	2,085
Enroute	229		1	334	1,586	2,150
Destination	13		108	14	543	678
	545		110	566	3,692	4,913
US Rail / Short Line						
Origin						
Enroute	2			81		83
Destination	23			61	32	116
	25			142	32	199

**Change in Daily Loads on Wheels By Pipeline Location - Prior 24 Hours**

	E Canada	Prince Rupert	Thunder Bay	USA/MEX	Vancouver	Total
CN						
Origin	72	267		28	178	545
Enroute	10	-176		-16	-31	-213
Destination	3	-115	0	4	-199	-307
	85	-24	0	16	-52	25
CP						
Origin	28		0	104	241	373
Enroute	-115		0	49	-6	-72
Destination	13		-59	-8	149	95
	-74		-59	145	384	396
US Rail / Short Line						
Origin						
Enroute	-2			-11		-13
Destination	-8			16	-2	6
	-10			5	-2	-7

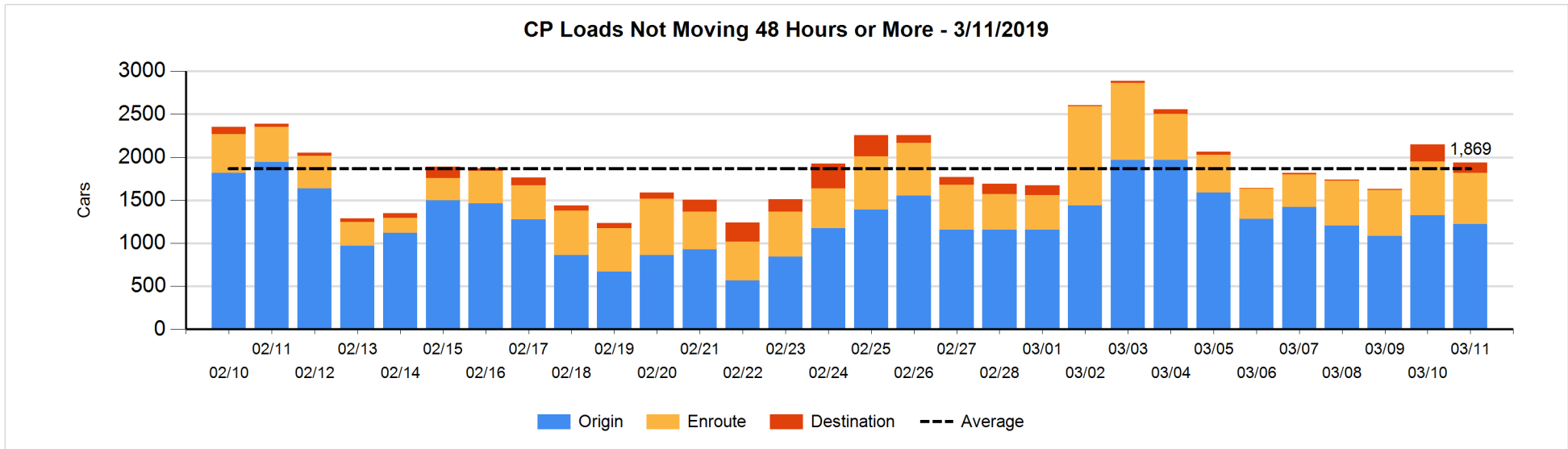
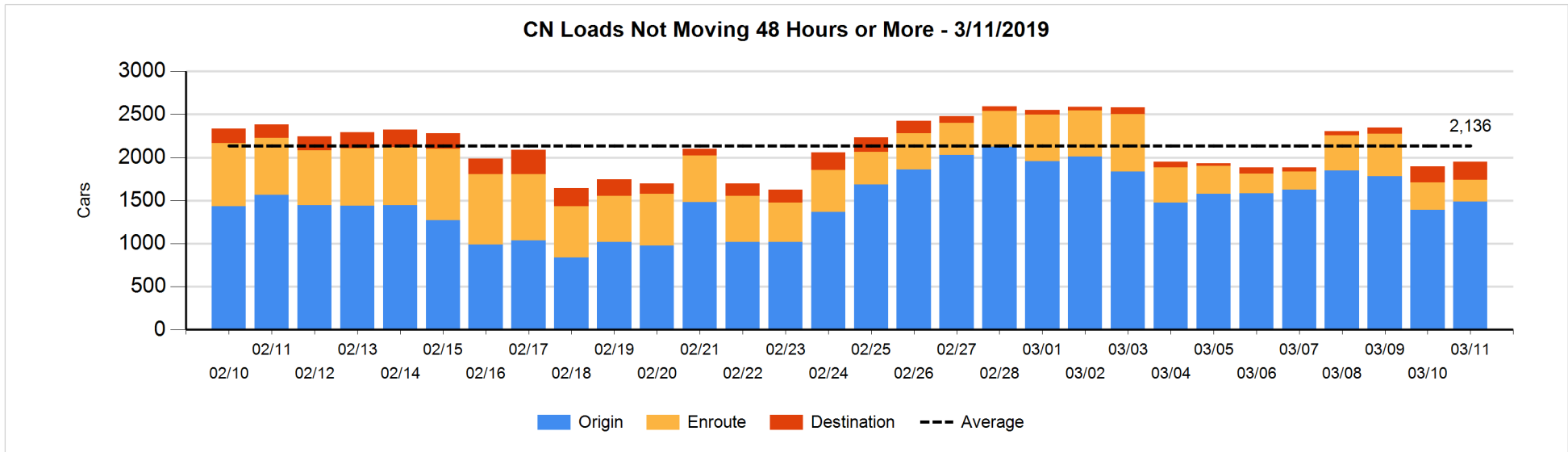


**Loads Not Moving 48 Hours or More - 3/11/2019**

	E Canada	Prince Rupert	Thunder Bay	USA/MEX	Vancouver	Total
CN						
Origin	126	547		25	790	1488
Enroute	88	29		14	120	251
Destination	96	2		3	110	211
	310	578		42	1020	1950
CP						
Origin	275		1	114	835	1225
Enroute	101		1	62	428	592
Destination			92	13	15	120
	376		94	189	1278	1937
US Rail / Short Line						
Origin						
Enroute	1			23		24
Destination	7			36	26	69
	8			59	26	93

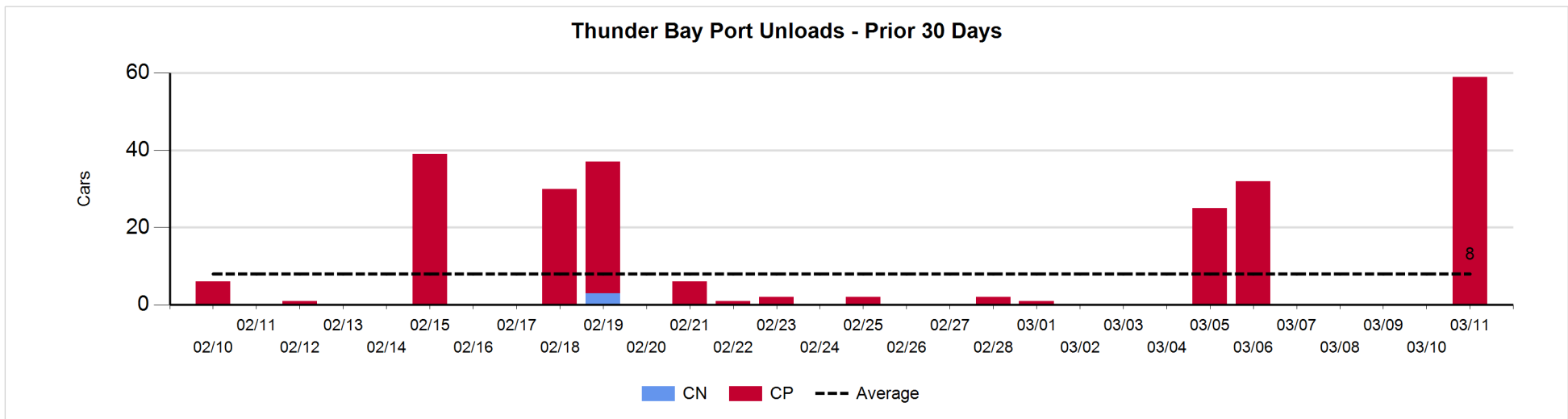
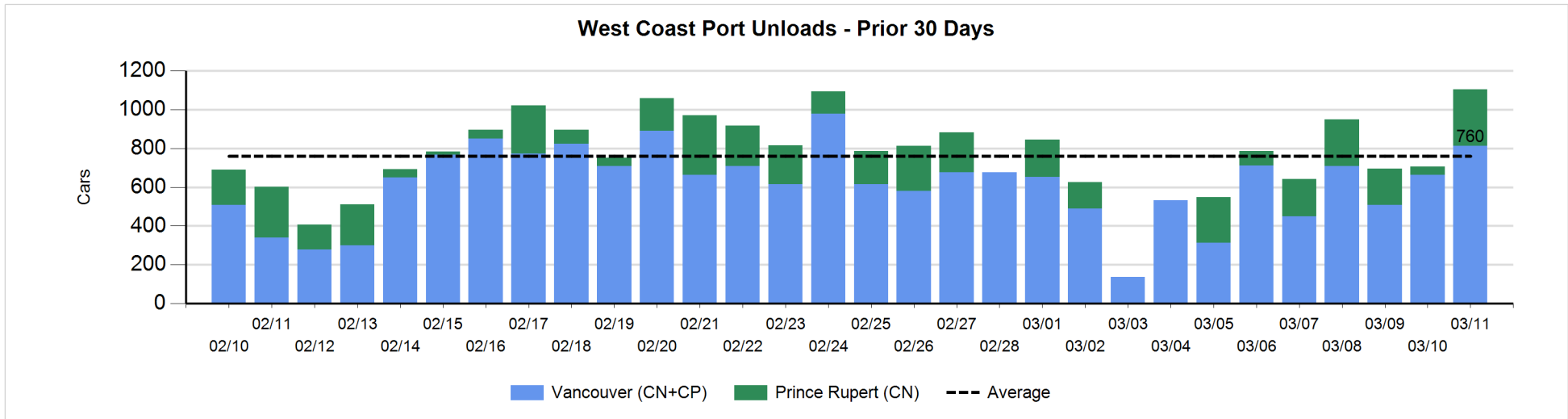
**Change in Loads Not Moving 48 Hours or More - 3/11/2019**

	E Canada	Prince Rupert	Thunder Bay	USA/MEX	Vancouver	Total
CN						
Origin	0	103		0	-4	99
Enroute	10	3		-2	-83	-72
Destination	20	-83	-5	-6	101	27
	30	23	-5	-8	14	54
CP						
Origin	0		0	105	-204	-99
Enroute	-9		0	8	-30	-31
Destination			-75	-9	0	-84
	-9		-75	104	-234	-214
US Rail / Short Line						
Origin						
Enroute	-3			1		-2
Destination	-24			-6	10	-20
	-27			-5	10	-22



Port Unloads - 3/11/2019

	Prince Rupert	Vancouver	West Coast Total	Thunder Bay	Total
CN	291	403	694		694
CP		409	409	59	468
	291	812	1,103	59	1,162





**Port Terminal Status**

**Vancouver**

Daily Activity for 3/11/2019

	Cars Arrived	Cars Received in Interchange	Cars Delivered in Interchange	Cars Placed for Unloading	Loads on Wheels at Destination As of 3/11/2019
CN	271	125	239	380	327
CP	492	239	130	555	543
SRY	1	5		7	32

**Port Unloads**

	03/11	03/10	Week To Date	Last Week
CN	403	362	403	1,758
CP	409	302	409	2,127
SRY	8		8	70

**Age Profile of Loaded Cars Waiting Placement for Unloading**

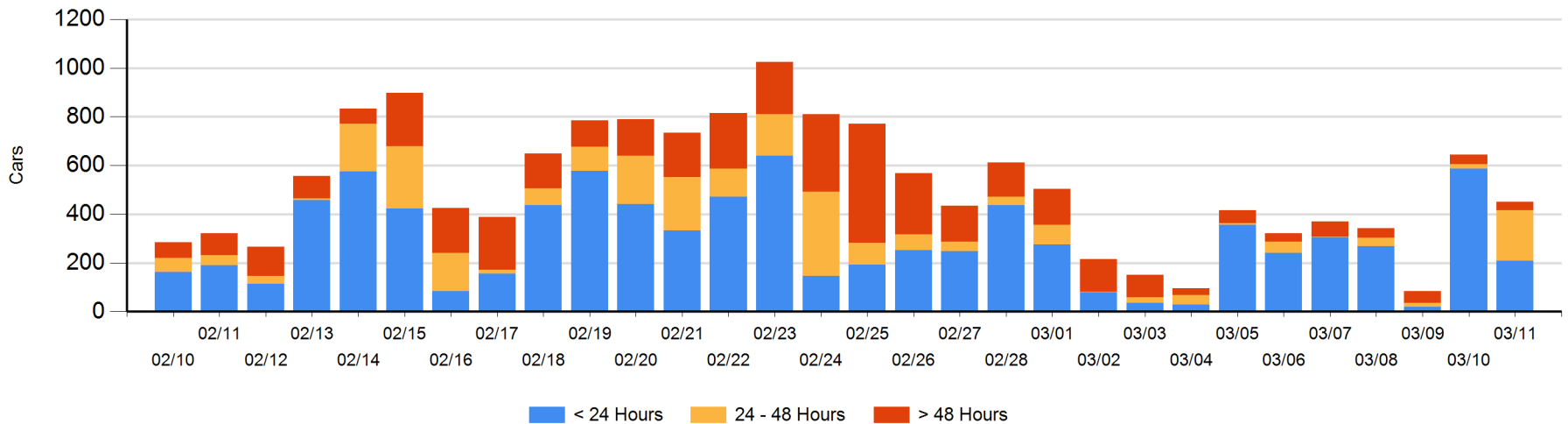
**Today**

	< 24 Hrs	24 - 48 Hrs	> 48-72 Hrs	> 72 Hrs	Total On Hand
CN	3	90		1	94
CP	205	117		35	357
SRY					0

**Change in Last 24 Hours**

	< 24 Hrs	24-48 Hrs	48 - 72 Hrs	> 72 Hrs
CN	-206	90		0
CP	-173	100	-7	3
SRY				

**Loaded Cars on Hand Vancouver Waiting for Placement - Last 30 Days All Railways**



**Port Terminal Status**

**Prince Rupert**

Daily Activity for 3/11/2019

	Cars Arrived	Cars Received in Interchange	Cars Delivered in Interchange	Cars Placed for Unloading	Loads on Wheels at Destination As of 3/11/2019
CN	175			259	71

**Port Unloads**

	03/11	03/10	Week To Date	Last Week
CN	291	41	291	973

**Age Profile of Loaded Cars Waiting Placement for Unloading**

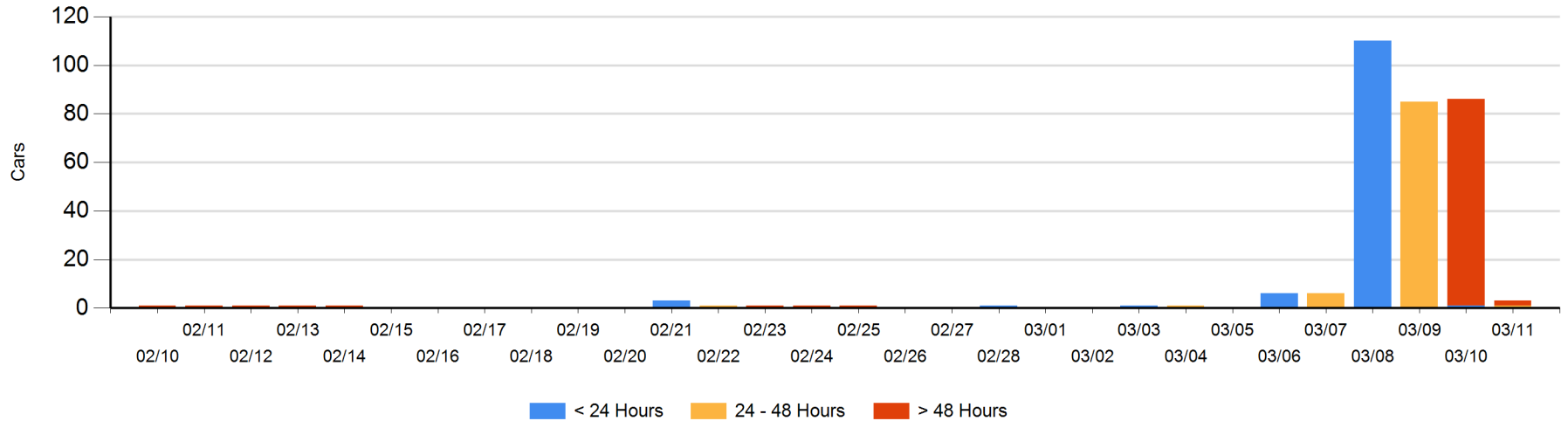
**Today**

	< 24 Hrs	24 - 48 Hrs	> 48-72 Hrs	> 72 Hrs	Total On Hand
CN		1		2	3

**Change in Last 24 Hours**

	< 24 Hrs	24-48 Hrs	48 - 72 Hrs	> 72 Hrs
CN	-1	1	-85	2

Loaded Cars on Hand Prince Rupert Waiting for Placement - Last 30 Days All Railways



**Port Terminal Status**

**Thunder Bay**

Daily Activity for 3/11/2019

	Cars Arrived	Cars Received in Interchange	Cars Delivered in Interchange	Cars Placed for Unloading	Loads on Wheels at Destination As of 3/11/2019
CN					5
CP				20	108

**Port Unloads**

	03/11	03/10	Week To Date	Last Week
CN				
CP	59		59	57

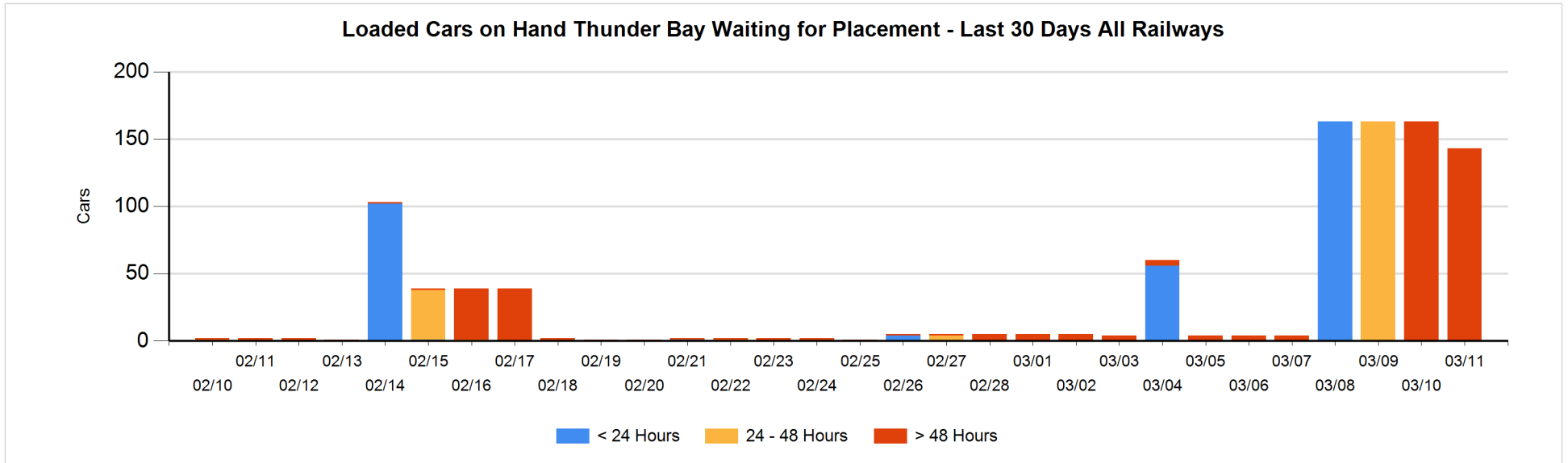
**Age Profile of Loaded Cars Waiting Placement for Unloading**

**Today**

	< 24 Hrs	24 - 48 Hrs	> 48-72 Hrs	> 72 Hrs	Total On Hand
CN					0
CP				143	143

**Change in Last 24 Hours**

	< 24 Hrs	24-48 Hrs	48 - 72 Hrs	> 72 Hrs
CN				
CP			-163	143



## Measurement Definitions

Loads on Wheels	<p>Count of loaded rail cars including all rail cars that have been released loaded at origin and have not been reported by the railway as unloaded at destination.</p> <p>Counts include all rail cars (hopper cars and boxcars) moving within a pipeline.</p>
Loads Not Moving	<p>Loaded rail cars for which the railways have not reported a movement event for 48 hours or more whether the rail car is at origin, enroute or at destination.</p>
Port Unloads	<p>Count of rail cars reported by railways as unloaded at the western port destinations of Vancouver, Prince Rupert and Thunder Bay.</p> <p>Unload counts include all rail cars (hopper cars and boxcars) unloaded by all receivers including major port terminals, transloaders and other receivers.</p>
Cars Arrived	<p>Count of rail cars reported as arrived at the destination railway terminal.</p>
Cars Received in Interchange	<p>Count of rail cars received in interchange by each railway within a destination railway terminal. Interchange activity is tracked for the Vancouver and Thunder Bay pipelines as applicable.</p>
Cars Delivered in Interchange	<p>Count of rail cars delivered in interchange by each railway within a destination railway terminal. Interchange activity is tracked for the Vancouver and Thunder Bay pipelines as applicable.</p>
Cars Placed for Unloading	<p>Count of rail cars reported by the railways as placed loaded at the receiver's facility for unloading.</p>
Loads on Wheels at Destination	<p>Count of rail cars that remain under load within the destination railway terminal including rail cars that have been reported as placed for unloading but not yet reported as unloaded.</p>
Waiting Placement for Unloading	<p>Count of rail cars that have been reported as arrived at the destination railway terminal but not reported as placed for unloading by the railway.</p> <p>For the Ports of Vancouver, Prince Rupert and Thunder Bay the count of rail cars waiting placement for unloading is categorized by age – i.e. the elapsed time from arrival at destination to the current report date.</p>