

## SPEED READ

- Loads on wheels increased marginally overnight, marking higher CP volumes offset by a decline in CN volumes. On a net basis, volumes increased due to higher traffic in the E. Canada, Thunder Bay and Prince Rupert corridors offset by reduced traffic in the Vancouver and USA/MEX corridors.
- Network fluidity improved overnight, led by a decline in idle car counts on both CN and CP by 15% (-299) and 8% (-150), respectively. The total count of cars for 4+ days on both railways fell 9% (-232) overnight - currently at 2,452 cars.
- Two days in Week 33 unloads now ahead of prior week's performance by 1,000 unloads, marking improved week over week performance across all three major ports - Vancouver, Thunder Bay and Prince Rupert.

---

## Loads on Wheels

- Loads on wheels increased slightly by 1% (+61) overnight, due to higher traffic on CP offset by lower volumes on CN - combined total at 11,039 and 3% above the trailing 30-day average.
- On a net basis, the increase in loads on wheels reflects higher traffic in the E. Canada, Thunder Bay and Prince Rupert corridors offset by reduced traffic in the Vancouver and USA/MEX corridors.
- CN volumes fell slightly by 1% (-78) overnight, with lower traffic in the Vancouver and E. Canada corridors offset by higher volumes in the Prince Rupert and USA/MEX corridors. System wide CN loads on wheels currently at 5,783 and 1% above the trailing 30-day average.
- CP volumes gained 3% (+167) overnight, driven by an increase in volumes across all corridors other than USA/MEX. CP system wide loads on wheels now at 5,085 and 5% above the trailing 30-day average.
- Vancouver now at 6,602, decreased slightly (-30) overnight, now 1% below the trailing 30-day average.
- The Prince Rupert pipeline now at 1,707, gained 2% (+32) overnight, and 3% above the trailing 30-day average.
- Thunder Bay volumes increased significantly by 33% (+38) overnight - presently at 153 and 71% above the trailing 30-day average., with 97% of traffic moving on CP.

## Hopper Car Rationing

- CN rationed 1,095 hopper cars in week 31.

## Loads Not Moving

- **The count of cars not moving for 48+ hours fell 12% (-449) overnight, marking lower counts on both CN and CP. Idle car counts currently at 3,444 and 13% below the trailing 30-day average.**
- CN
  - **The count of idle cars for 48+ hours decreased 15% (-299) overnight - now at 1,652 cars.**
  - The number of cars idle for 4+ days declined 26% (-369) overnight - now at 1,040 cars.
  - The count of cars not moving for 7+ days declined 30% (-221) overnight - currently at 507 cars.
  - Vancouver represents 62% of all idle cars.
  - In total 75% of all idle cars are dwelling at origin locations.
- CP
  - **CP idle car counts for 48+ hours decreased 8% (-150) overnight - currently at 1,792 cars.**
  - The number of cars idle for 4+ days rose 11% (+137) overnight and have now increased for the third consecutive day - presently at 1,412 cars.

- The number of cars idle for 7+ days increased 8% (+44) overnight - currently at 621 cars.
- Vancouver accounts for 69% of all idle cars.
- In total 65% of all idle cars are dwelling at origin locations.

### **Port Performance**

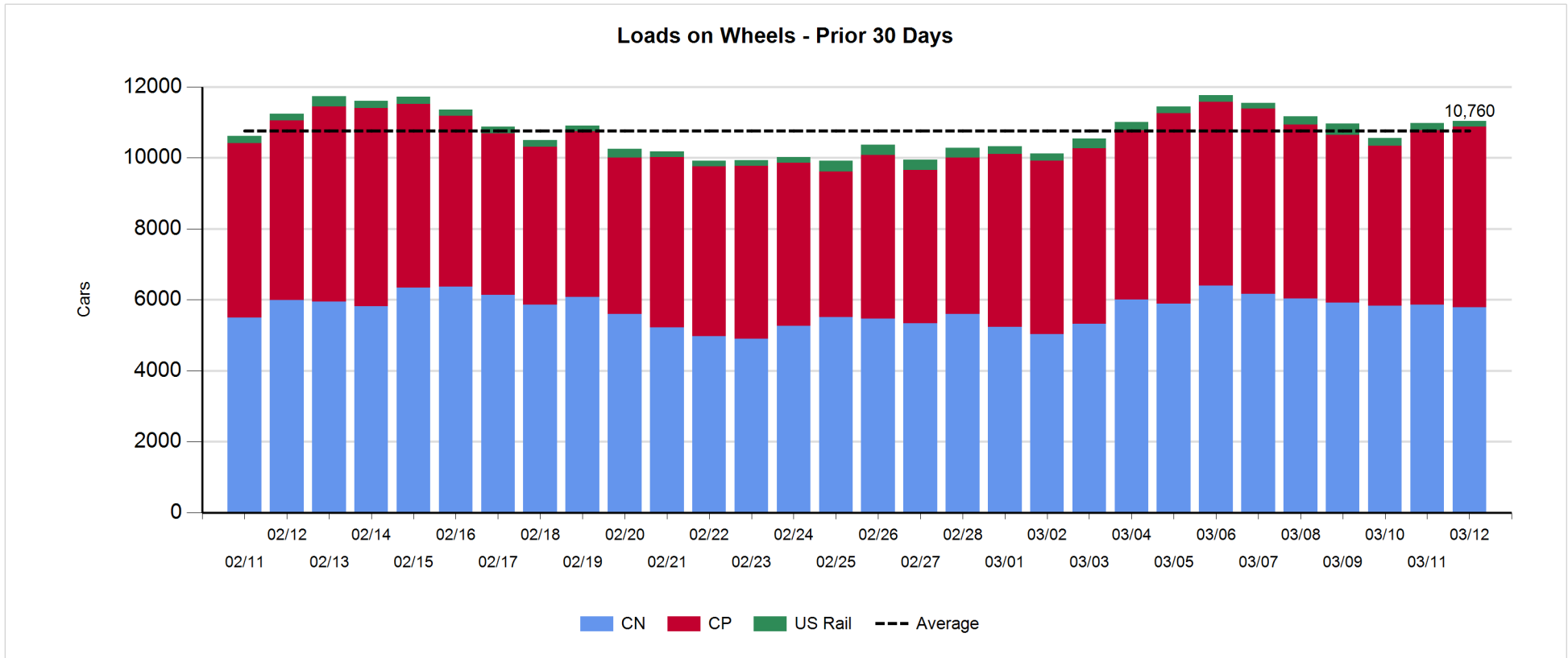
- CN and CP reported a total of 964 cars unloaded at the three major ports, now 24% above the trailing 30-day average. Two days in Week 33 unloads now ahead of last week's pace by 1,000 unloads, marking higher unloads across all three major ports - Vancouver, Thunder Bay and Prince Rupert.
- Vancouver
  - 705 unloads reported by CN and CP at the Port of Vancouver; CN - 341 and CP - 364. Two days in Week 33 unloads are tracking ahead of last week's performance by more than 650 unloads.
  - There are 1,000 cars on site at Vancouver with 800 cars arriving at the port in the last 24 hours.
  - CN and CP have nearly 900 cars in British Columbia en route to Vancouver, with 500 cars at Kamloops and west, and 77% of traffic moving on CP.
- Prince Rupert
  - Prince Rupert reported 186 unloads, now ahead of last week's unloads after two days by 250 unloads.
  - Loads on wheels now above 1,000 cars - now at 1,707 cars.
  - There are 450 cars west of Jasper en route to Prince Rupert.
  - There are 2 cars on site at Prince Rupert with more than 100 cars arriving at the port in the last 24 hours.
- Thunder Bay
  - 73 unloads, the highest seen in the last 30 days, were reported at Thunder Bay yesterday. Two days in Week 33 unloads are tracking ahead of last week's pace by 100 unloads.
  - There are fewer than 50 cars on site at Thunder Bay with zero cars arriving at the port in the prior 24 hours.
  - There are 1 car en route to Thunder Bay from Winnipeg and east.

**Daily Loads on Wheels - 3/12/2019**

	E Canada	Prince Rupert	Thunder Bay	USA/MEX	Vancouver	Total
CN	1,031	1,707	5	209	2,831	5,783
CP	652		148	537	3,748	5,085
Short Line	15				23	38
US Rail				133		133
	1,698	1,707	153	879	6,602	11,039

**Change in Loads on Wheels - Prior 24 Hours**

	E Canada	Prince Rupert	Thunder Bay	USA/MEX	Vancouver	Total
CN	-53	32	0	15	-72	-78
CP	106		38	-28	51	167
Short Line	-10				-9	-19
US Rail				-9		-9
	43	32	38	-22	-30	61

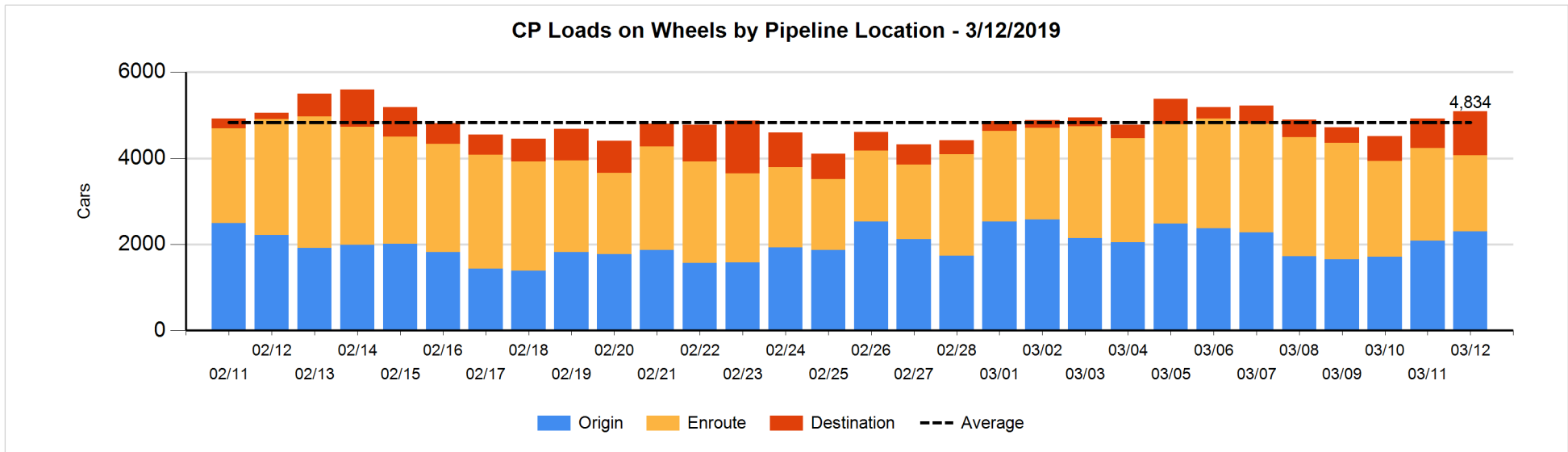
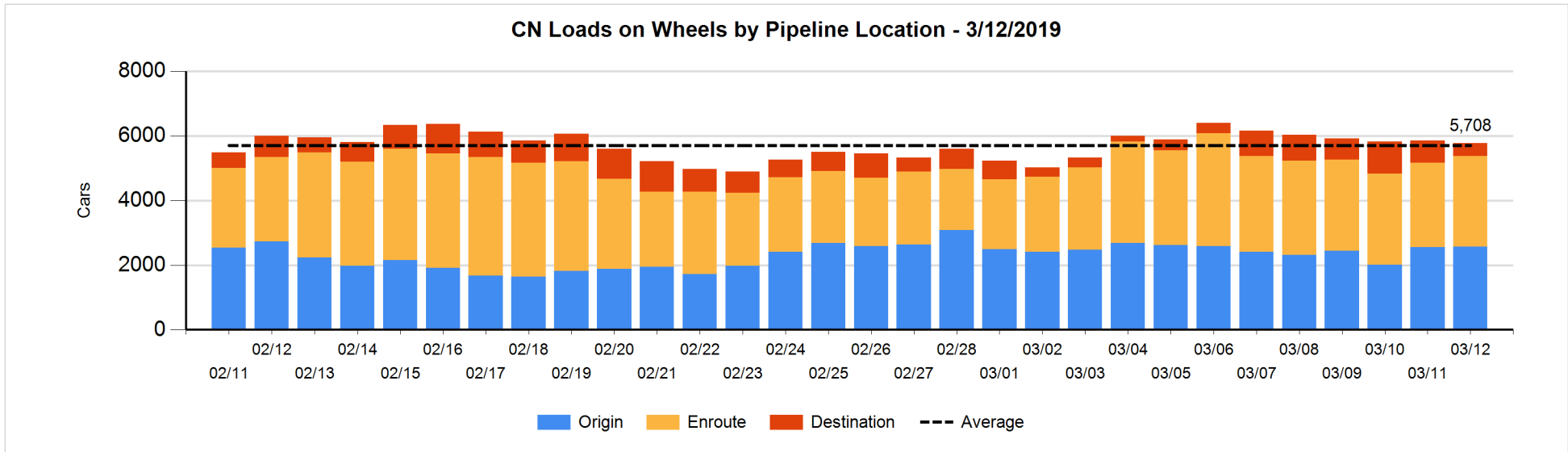


**Daily Loads on Wheels By Pipeline Location - 3/12/2019**

	E Canada	Prince Rupert	Thunder Bay	USA/MEX	Vancouver	Total
CN						
Origin	263	633		55	1,612	2,563
Enroute	521	1,072		138	1,087	2,818
Destination	247	2	5	16	132	402
	1,031	1,707	5	209	2,831	5,783
CP						
Origin	413		113	216	1,560	2,302
Enroute	118		1	303	1,349	1,771
Destination	121		34	18	839	1,012
	652		148	537	3,748	5,085
US Rail / Short Line						
Origin						
Enroute	2			77		79
Destination	13			56	23	92
	15			133	23	171

**Change in Daily Loads on Wheels By Pipeline Location - Prior 24 Hours**

	E Canada	Prince Rupert	Thunder Bay	USA/MEX	Vancouver	Total
CN						
Origin	-39	-181		-2	228	6
Enroute	15	282		18	-105	210
Destination	-29	-69	0	-1	-195	-294
	-53	32	0	15	-72	-78
CP						
Origin	110		112	-2	-8	212
Enroute	-112		0	-30	-237	-379
Destination	108		-74	4	296	334
	106		38	-28	51	167
US Rail / Short Line						
Origin						
Enroute	0			-4		-4
Destination	-10			-5	-9	-24
	-10			-9	-9	-28

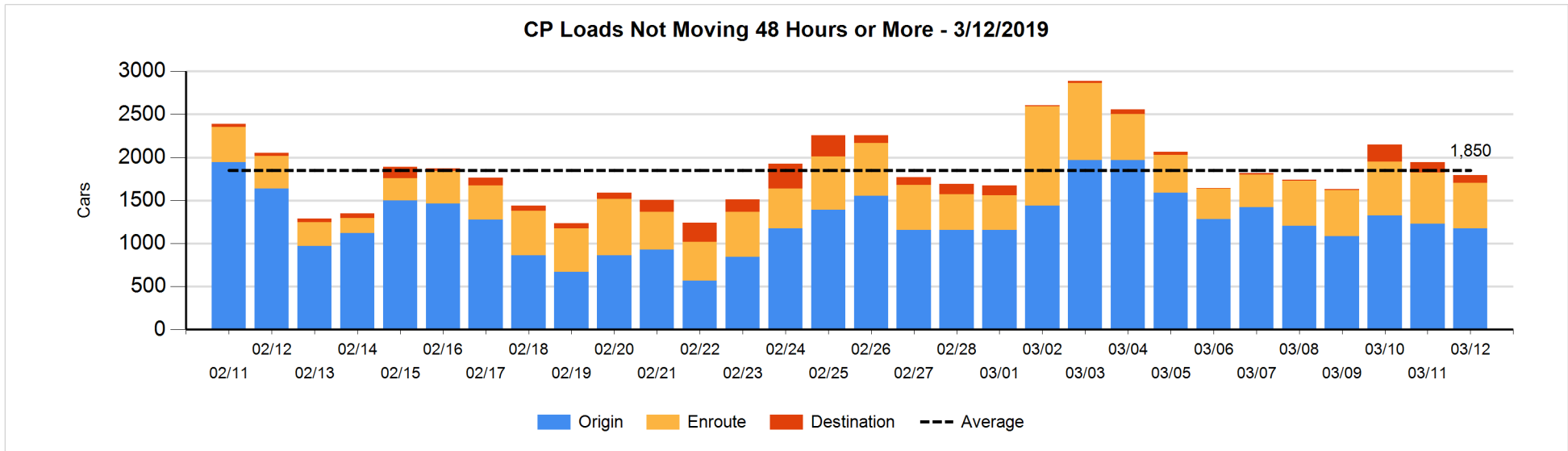
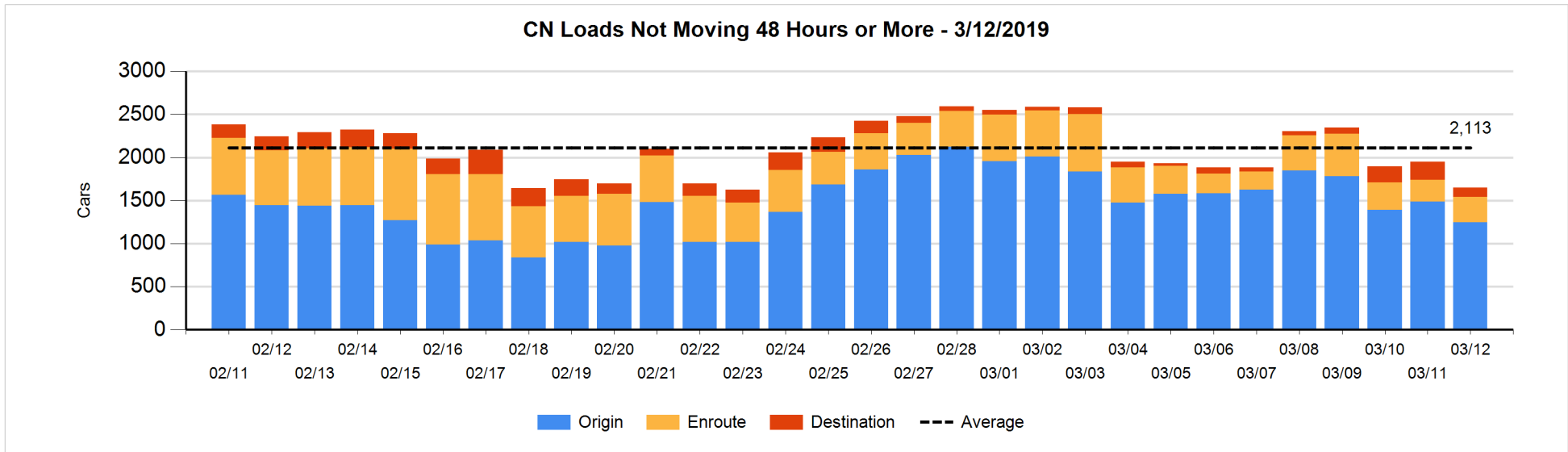


**Loads Not Moving 48 Hours or More - 3/12/2019**

	E Canada	Prince Rupert	Thunder Bay	USA/MEX	Vancouver	Total
CN						
Origin	209	168			869	1246
Enroute	56	84		12	146	298
Destination	95	2		2	9	108
	360	254		14	1024	1652
CP						
Origin	275		1	113	783	1172
Enroute	69		1	47	414	531
Destination			33	10	46	89
	344		35	170	1243	1792
US Rail / Short Line						
Origin						
Enroute	1			24		25
Destination	7			23	18	48
	8			47	18	73

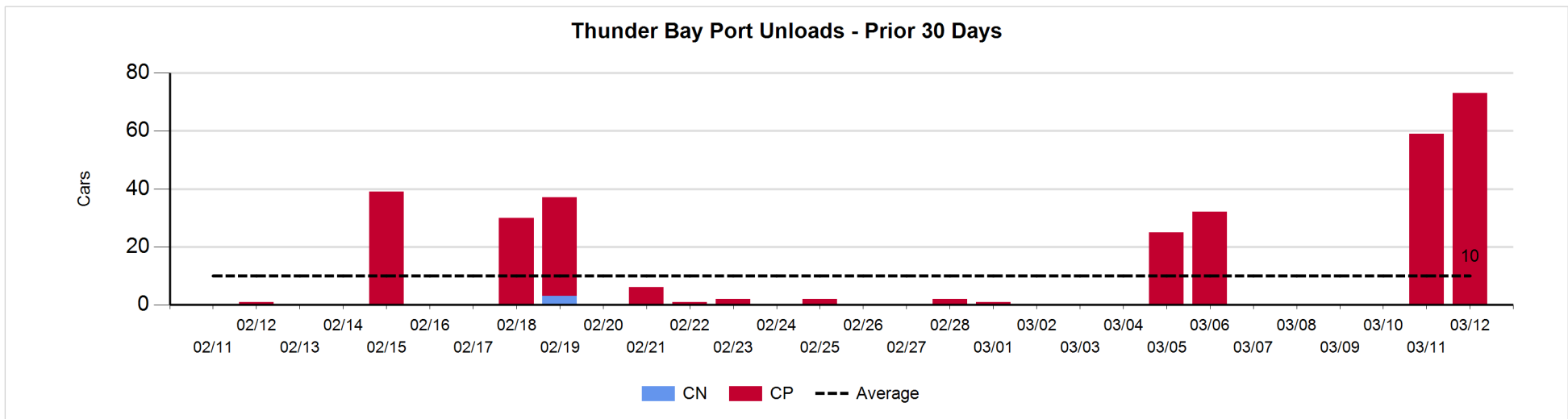
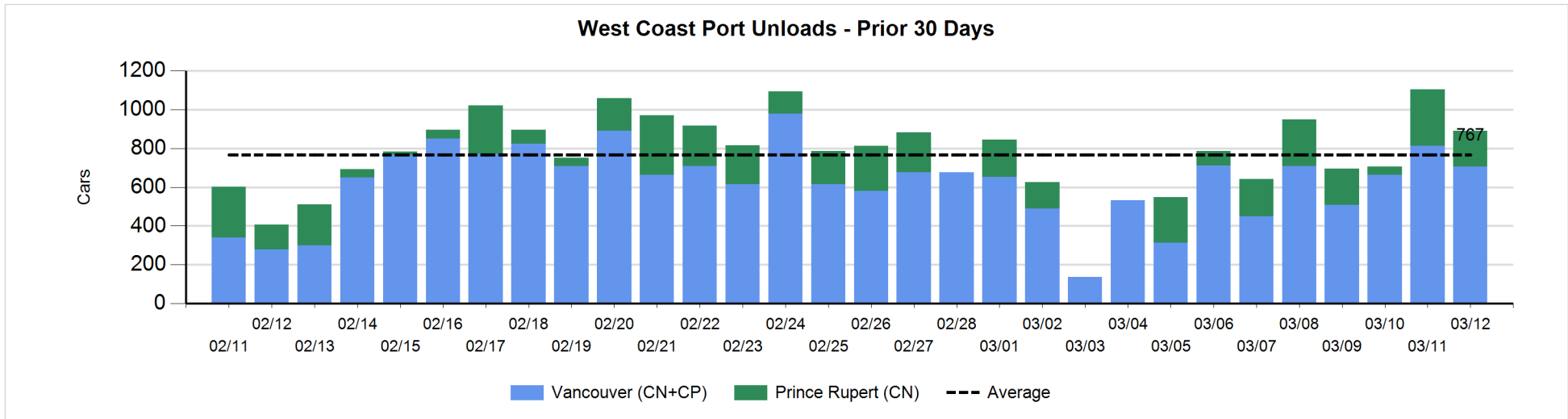
**Change in Loads Not Moving 48 Hours or More - 3/12/2019**

	E Canada	Prince Rupert	Thunder Bay	USA/MEX	Vancouver	Total
CN						
Origin	83	-379		-25	79	-242
Enroute	-32	55		-2	25	46
Destination	-1	0		-1	-101	-103
	50	-324		-28	3	-299
CP						
Origin	0		0	-1	-57	-58
Enroute	-33		0	-14	-14	-61
Destination			-59	-3	31	-31
	-33		-59	-18	-40	-150
US Rail / Short Line						
Origin						
Enroute	0			1		1
Destination	0			-13	-8	-21
	0			-12	-8	-20



**Port Unloads - 3/12/2019**

	Prince Rupert	Vancouver	West Coast Total	Thunder Bay	Total
CN	186	341	527		527
CP		364	364	73	437
	186	705	891	73	964





**Port Terminal Status**

**Vancouver**

Daily Activity for 3/12/2019

	Cars Arrived	Cars Received in Interchange	Cars Delivered in Interchange	Cars Placed for Unloading	Loads on Wheels at Destination As of 3/12/2019
CN	136	108	212	153	132
CP	662	212	114	398	839
SRY		6		12	23

**Port Unloads**

	03/12	03/11	Week To Date	Last Week
CN	341	403	744	1,758
CP	364	409	773	2,127
SRY	11	8	19	70

**Age Profile of Loaded Cars Waiting Placement for Unloading**

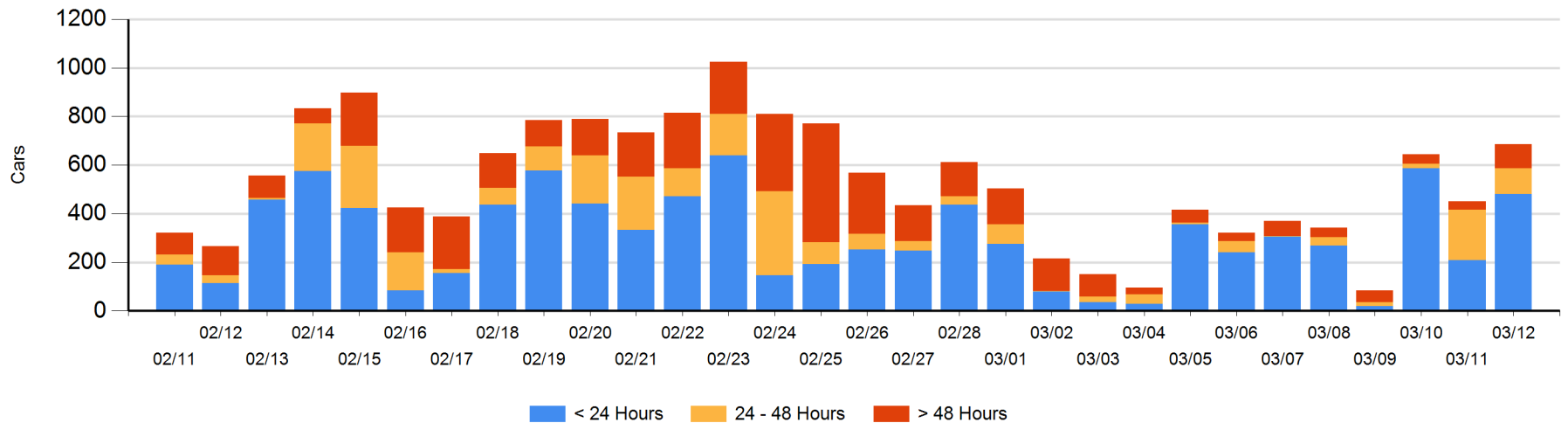
**Today**

	< 24 Hrs	24 - 48 Hrs	> 48-72 Hrs	> 72 Hrs	Total On Hand
CN	46		6		52
CP	435	105	73	20	633
SRY		1			1

**Change in Last 24 Hours**

	< 24 Hrs	24-48 Hrs	48 - 72 Hrs	> 72 Hrs
CN	43	-90	6	-1
CP	231	-12	73	-15
SRY	-1	1		

**Loaded Cars on Hand Vancouver Waiting for Placement - Last 30 Days All Railways**



**Port Terminal Status**

**Prince Rupert**

Daily Activity for 3/12/2019

	Cars Arrived	Cars Received in Interchange	Cars Delivered in Interchange	Cars Placed for Unloading	Loads on Wheels at Destination As of 3/12/2019
CN	117			118	2

**Port Unloads**

	03/12	03/11	Week To Date	Last Week
CN	186	291	477	973

**Age Profile of Loaded Cars Waiting Placement for Unloading**

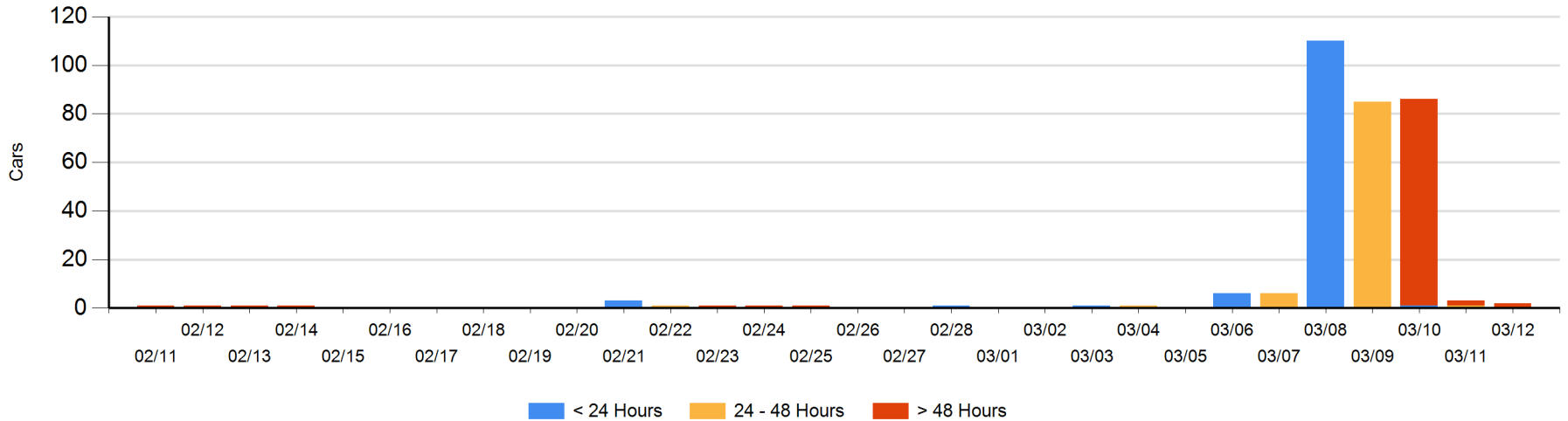
**Today**

	< 24 Hrs	24 - 48 Hrs	> 48-72 Hrs	> 72 Hrs	Total On Hand
CN			1	1	2

**Change in Last 24 Hours**

	< 24 Hrs	24-48 Hrs	48 - 72 Hrs	> 72 Hrs
CN		-1	1	-1

Loaded Cars on Hand Prince Rupert Waiting for Placement - Last 30 Days All Railways



**Port Terminal Status**

**Thunder Bay**

Daily Activity for 3/12/2019

	Cars Arrived	Cars Received in Interchange	Cars Delivered in Interchange	Cars Placed for Unloading	Loads on Wheels at Destination As of 3/12/2019
CN					5
CP				3	34

**Port Unloads**

	03/12	03/11	Week To Date	Last Week
CN				
CP	73	59	132	57

**Age Profile of Loaded Cars Waiting Placement for Unloading**

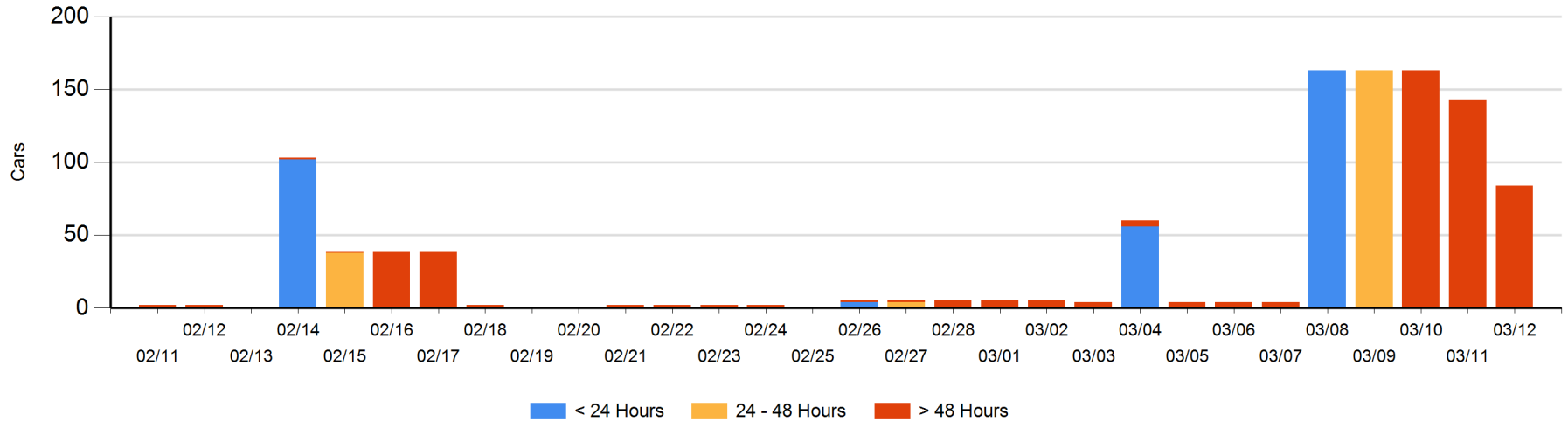
**Today**

	< 24 Hrs	24 - 48 Hrs	> 48-72 Hrs	> 72 Hrs	Total On Hand
CN					0
CP				84	84

**Change in Last 24 Hours**

	< 24 Hrs	24-48 Hrs	48 - 72 Hrs	> 72 Hrs
CN				
CP				-59

Loaded Cars on Hand Thunder Bay Waiting for Placement - Last 30 Days All Railways



## Measurement Definitions

Loads on Wheels	<p>Count of loaded rail cars including all rail cars that have been released loaded at origin and have not been reported by the railway as unloaded at destination.</p> <p>Counts include all rail cars (hopper cars and boxcars) moving within a pipeline.</p>
Loads Not Moving	<p>Loaded rail cars for which the railways have not reported a movement event for 48 hours or more whether the rail car is at origin, enroute or at destination.</p>
Port Unloads	<p>Count of rail cars reported by railways as unloaded at the western port destinations of Vancouver, Prince Rupert and Thunder Bay.</p> <p>Unload counts include all rail cars (hopper cars and boxcars) unloaded by all receivers including major port terminals, transloaders and other receivers.</p>
Cars Arrived	<p>Count of rail cars reported as arrived at the destination railway terminal.</p>
Cars Received in Interchange	<p>Count of rail cars received in interchange by each railway within a destination railway terminal. Interchange activity is tracked for the Vancouver and Thunder Bay pipelines as applicable.</p>
Cars Delivered in Interchange	<p>Count of rail cars delivered in interchange by each railway within a destination railway terminal. Interchange activity is tracked for the Vancouver and Thunder Bay pipelines as applicable.</p>
Cars Placed for Unloading	<p>Count of rail cars reported by the railways as placed loaded at the receiver's facility for unloading.</p>
Loads on Wheels at Destination	<p>Count of rail cars that remain under load within the destination railway terminal including rail cars that have been reported as placed for unloading but not yet reported as unloaded.</p>
Waiting Placement for Unloading	<p>Count of rail cars that have been reported as arrived at the destination railway terminal but not reported as placed for unloading by the railway.</p> <p>For the Ports of Vancouver, Prince Rupert and Thunder Bay the count of rail cars waiting placement for unloading is categorized by age – i.e. the elapsed time from arrival at destination to the current report date.</p>