

## SPEED READ

- Loads on wheels decreased overnight, reflecting reduced CP volumes offset by a rise in CN volumes. On a net basis, volumes fell due to reduced traffic in the Vancouver and E. Canada corridors offset by higher volumes in the Thunder Bay, USA/MEX and Prince Rupert corridors.
- Network fluidity deteriorated overnight, led by a rise in idle car counts on both CN and CP by 14% (+230) and 11% (+199), respectively. The total count of cars for 4+ days on both railways fell 14% (-347) overnight - presently at 2,154 cars.
- Three days in Week 33 unloads now ahead of prior week's performance by more than 1,000 unloads, marking improved week over week performance across all three major ports - Vancouver, Thunder Bay and Prince Rupert.

---

## Loads on Wheels

- Loads on wheels declined 2% (-249) overnight, due to reduced volumes on CP offset by higher volumes on CN - combined total at 10,841 and 1% above the trailing 30-day average.
- On a net basis, the decline in loads on wheels reflects reduced volumes in the Vancouver and E. Canada corridors offset by higher volumes in the Thunder Bay, USA/MEX and Prince Rupert corridors.
- CN volumes increased 4% (+221) overnight, with higher volumes in the Vancouver, USA/MEX and Prince Rupert corridors offset by reduced volumes in the E. Canada corridor. System wide CN loads on wheels presently at 6,004 and 5% above the trailing 30-day average.
- CP volumes fell significantly by 11% (-582) overnight, driven by a decline in volumes across all corridors other than Thunder Bay. CP system wide loads on wheels presently at 4,555 and 6% below the trailing 30-day average.
- Vancouver now at 6,274, declined 6% (-379) overnight, now 5% below the trailing 30-day average.
- The Prince Rupert pipeline presently at 1,770, increased 4% (+63) overnight, and 6% above the trailing 30-day average.
- Thunder Bay volumes increased significantly by 63% (+97) overnight - presently at 250, the highest seen in the last 30 days, and 156% above the trailing 30-day average., with 98% of traffic moving on CP.

## Hopper Car Rationing

- CN rationed 1,095 hopper cars in week 31.

## Loads Not Moving

- **The count of cars not moving for 48+ hours gained 12% (+429) overnight, reflecting higher counts on both CN and CP. Idle car counts now at 3,922 and in line with the trailing 30-day average.**
- CN
  - **The count of idle cars for 48+ hours rose 14% (+230) overnight - presently at 1,882 cars.**
  - The number of cars idle for 4+ days fell 13% (-135) overnight - presently at 905 cars.
  - The count of cars not moving for 7+ days increased 9% (+46) overnight - now at 553 cars.
  - Vancouver represents 66% of all idle cars.
  - In total 61% of all idle cars are dwelling at origin locations.
- CP
  - **CP idle car counts for 48+ hours increased 11% (+199) overnight - presently at 2,040 cars.**
  - The number of cars idle for 4+ days fell 15% (-212) overnight - presently at 1,249 cars.

- The number of cars idle for 7+ days increased 21% (+144) overnight - presently at 816 cars.
- Vancouver accounts for 72% of all idle cars.
- In total 72% of all idle cars are dwelling at origin locations.

### **Port Performance**

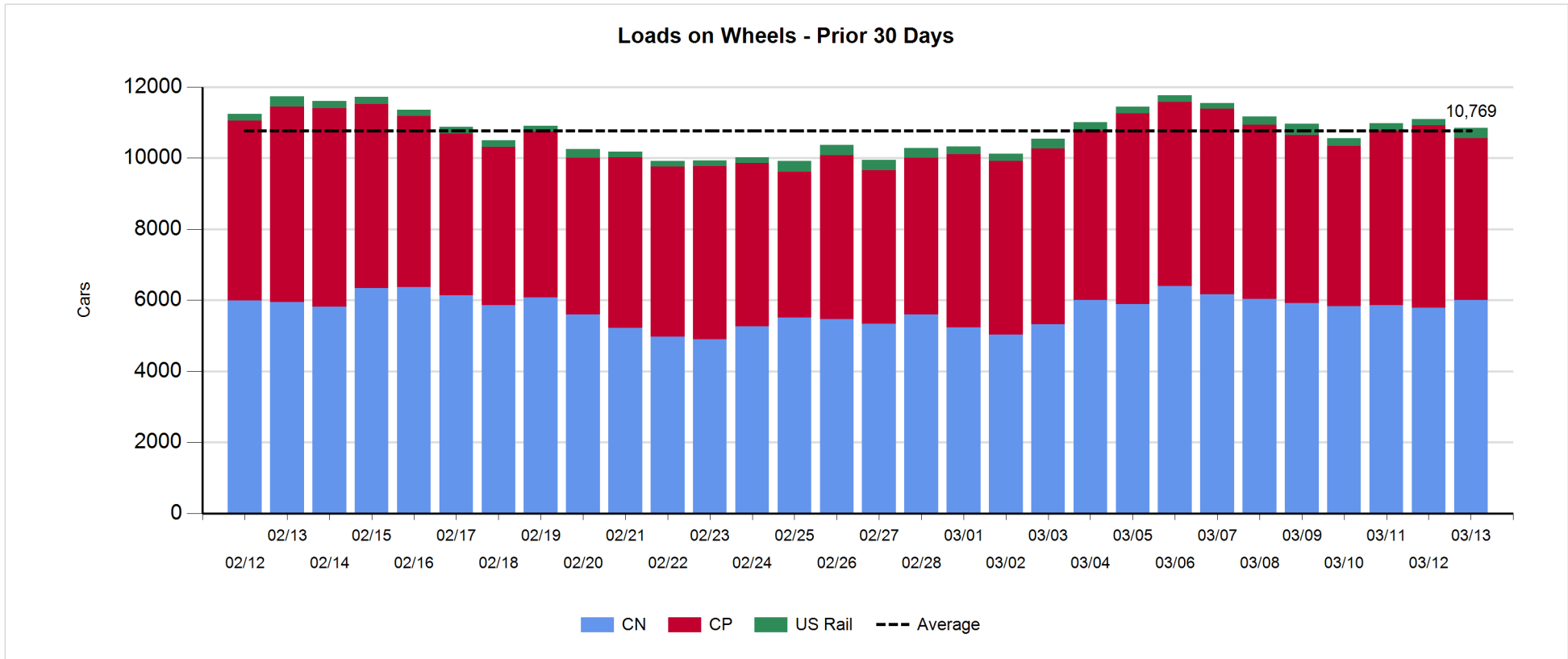
- CN and CP reported a total of 825 cars unloaded at the three major ports, now 5% above the trailing 30-day average. Three days in Week 33 unloads now ahead of last week's pace by more than 1,000 unloads, marking higher unloads across all three major ports - Vancouver, Thunder Bay and Prince Rupert.
- Vancouver
  - 758 unloads reported by CN and CP at the Port of Vancouver; CN - 225 and CP - 533. Three days in Week 33 unloads are tracking ahead of last week's performance by 700 unloads.
  - There are more than 850 cars on site at Vancouver with more than 600 cars arriving at the port in the last 24 hours.
  - CN and CP have more than 400 cars in British Columbia en route to Vancouver, with more than 200 cars at Kamloops and west, and 50% of traffic moving on CN.
- Prince Rupert
  - Prince Rupert reported 38 unloads, now ahead of last week's unloads after three days by 200 unloads.
  - Loads on wheels now above 1,000 cars - presently at 1,770 cars.
  - There are more than 550 cars west of Jasper en route to Prince Rupert.
  - There are 1 car on site at Prince Rupert with less than 50 cars arriving at the port in the last 24 hours.
- Thunder Bay
  - 29 unloads were reported at Thunder Bay yesterday. Three days in Week 33 unloads are tracking ahead of last week's pace by 100 unloads.
  - There are 11 cars on site at Thunder Bay with zero cars arriving at the port in the prior 24 hours.
  - There are 1 car en route to Thunder Bay from Winnipeg and east.

**Daily Loads on Wheels - 3/13/2019**

	E Canada	Prince Rupert	Thunder Bay	USA/MEX	Vancouver	Total
CN	975	1,770	5	284	2,970	6,004
CP	561		245	466	3,283	4,555
Short Line	44				21	65
US Rail				217		217
	1,580	1,770	250	967	6,274	10,841

**Change in Loads on Wheels - Prior 24 Hours**

	E Canada	Prince Rupert	Thunder Bay	USA/MEX	Vancouver	Total
CN	-56	63	0	75	139	221
CP	-91		97	-72	-516	-582
Short Line	29				-2	27
US Rail				85		85
	-118	63	97	88	-379	-249



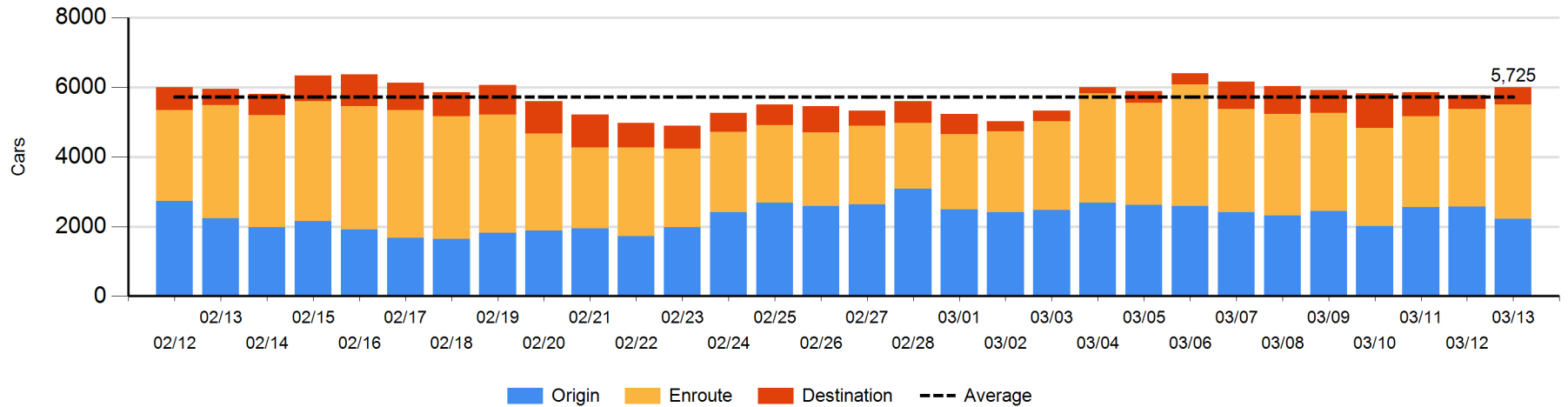
**Daily Loads on Wheels By Pipeline Location - 3/13/2019**

	E Canada	Prince Rupert	Thunder Bay	USA/MEX	Vancouver	Total
CN						
Origin	159	456		159	1,449	2,223
Enroute	614	1,313		105	1,251	3,283
Destination	202	1	5	20	270	498
	975	1,770	5	284	2,970	6,004
CP						
Origin	344		238	260	1,604	2,446
Enroute	156		1	190	1,107	1,454
Destination	61		6	16	572	655
	561		245	466	3,283	4,555
US Rail / Short Line						
Origin						
Enroute	3			151		154
Destination	41			66	21	128
	44			217	21	282

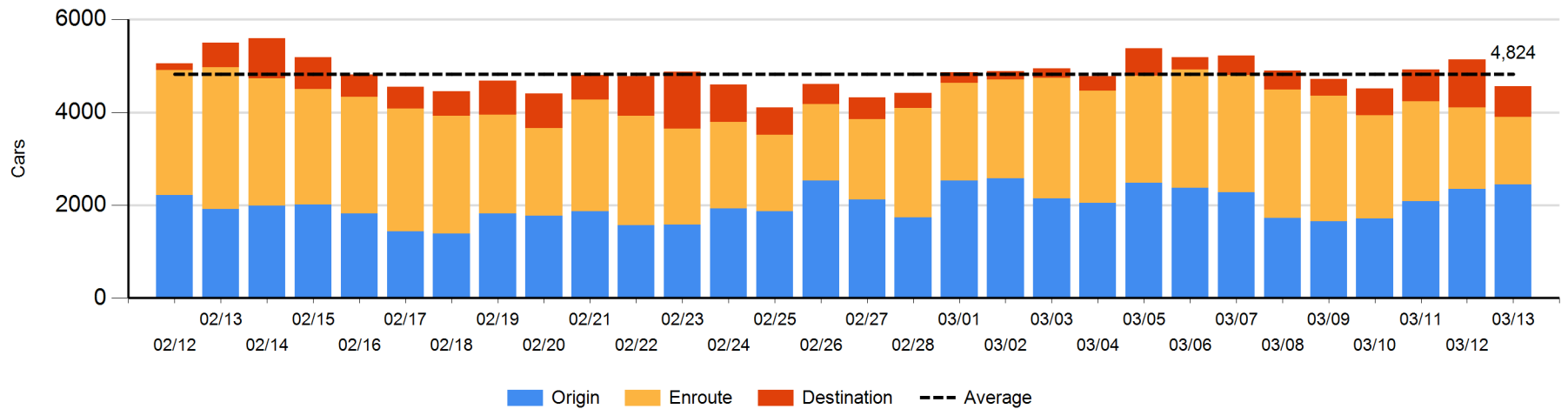
**Change in Daily Loads on Wheels By Pipeline Location - Prior 24 Hours**

	E Canada	Prince Rupert	Thunder Bay	USA/MEX	Vancouver	Total
CN						
Origin	-104	-177		104	-163	-340
Enroute	93	241		-33	164	465
Destination	-45	-1	0	4	138	96
	-56	63	0	75	139	221
CP						
Origin	-69		125	44	-7	93
Enroute	38		0	-89	-242	-293
Destination	-60		-28	-27	-267	-382
	-91		97	-72	-516	-582
US Rail / Short Line						
Origin						
Enroute	1			75		76
Destination	28			10	-2	36
	29			85	-2	112

**CN Loads on Wheels by Pipeline Location - 3/13/2019**



**CP Loads on Wheels by Pipeline Location - 3/13/2019**

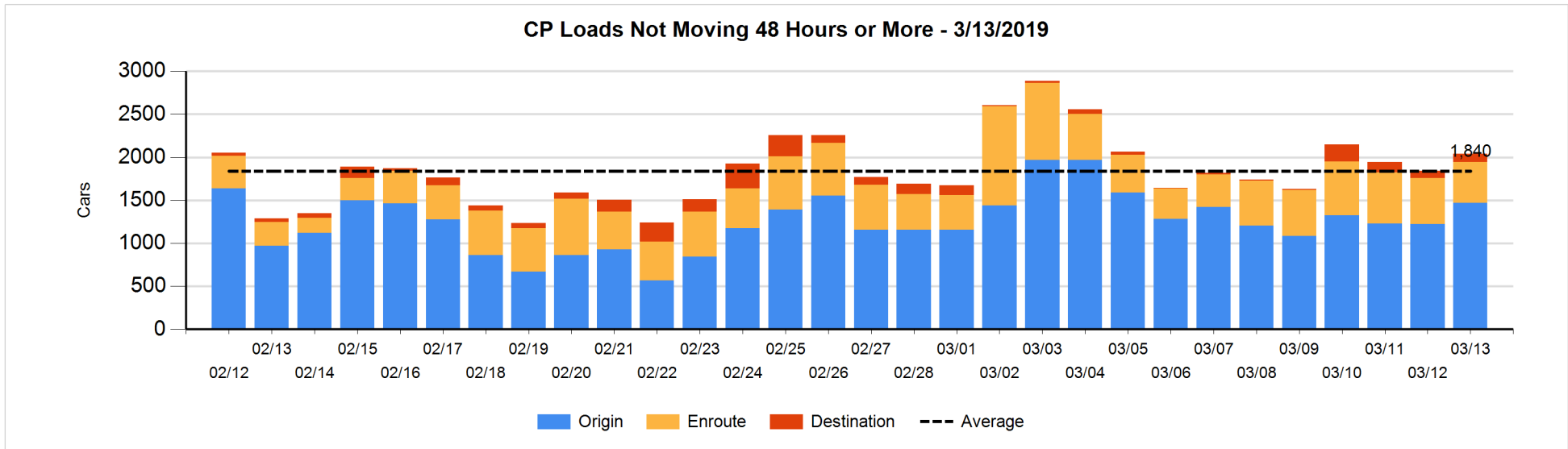
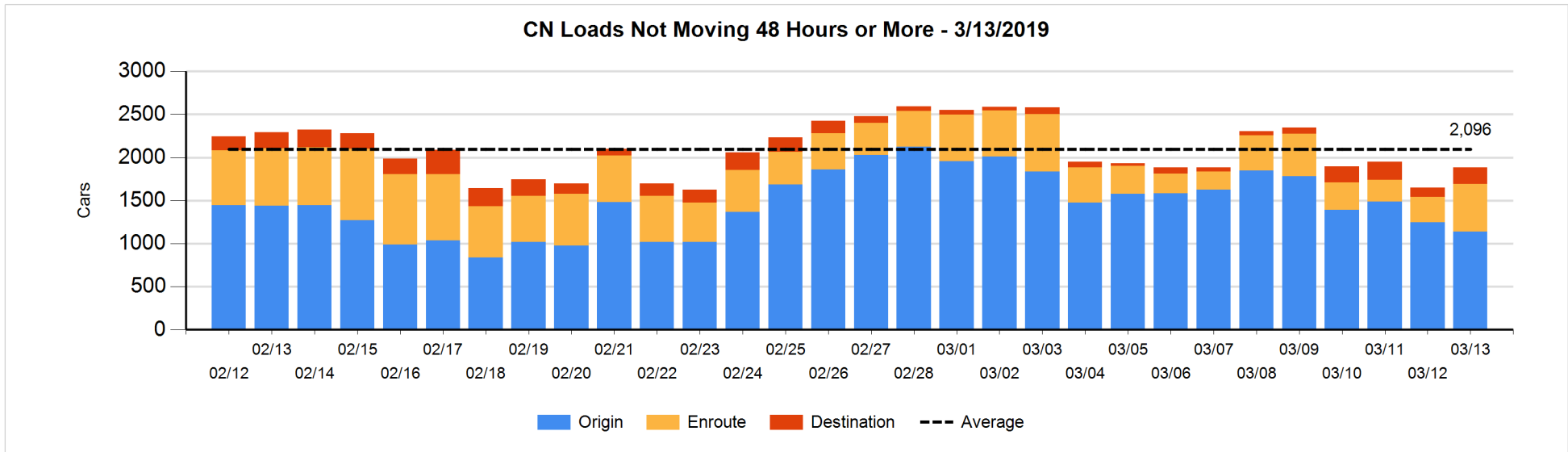


**Loads Not Moving 48 Hours or More - 3/13/2019**

	E Canada	Prince Rupert	Thunder Bay	USA/MEX	Vancouver	Total
<b>CN</b>						
Origin	156	16		32	936	1140
Enroute	214	27		14	294	549
Destination	174	1	5	4	9	193
	544	44	5	50	1239	1882
<b>CP</b>						
Origin	227		1	216	1022	1466
Enroute	58			43	375	476
Destination	21		6	4	67	98
	306		7	263	1464	2040
<b>US Rail / Short Line</b>						
Origin						
Enroute	2			19		21
Destination	7			12	16	35
	9			31	16	56

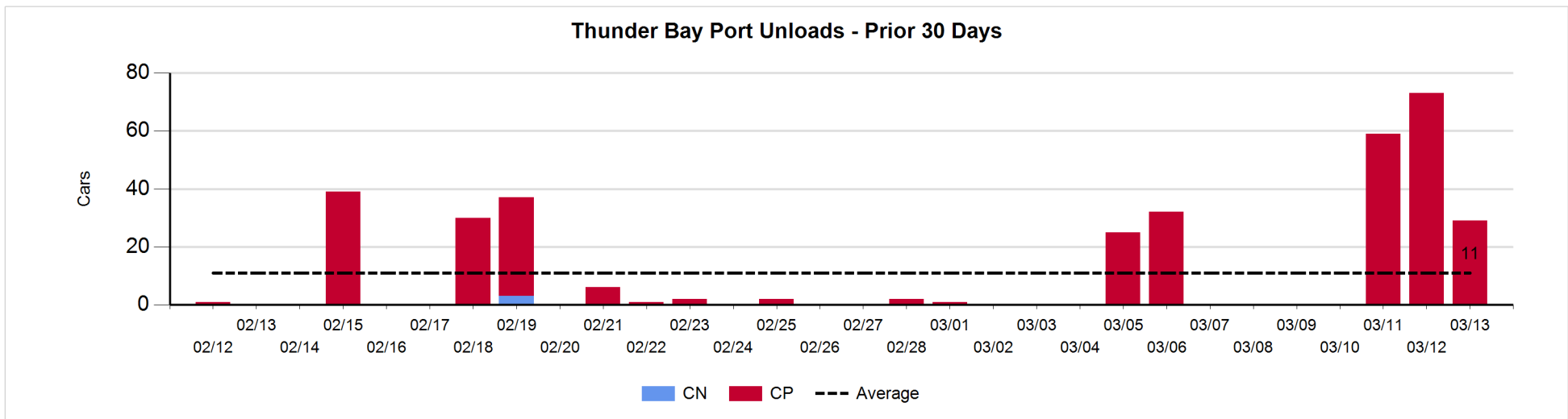
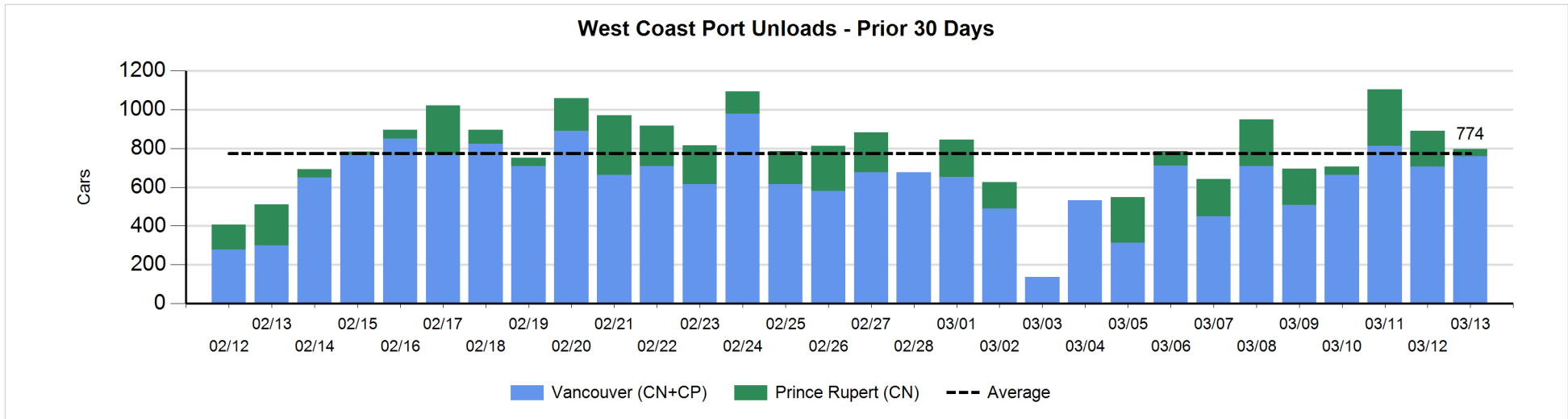
**Change in Loads Not Moving 48 Hours or More - 3/13/2019**

	E Canada	Prince Rupert	Thunder Bay	USA/MEX	Vancouver	Total
<b>CN</b>						
Origin	-53	-152		32	67	-106
Enroute	158	-57		2	148	251
Destination	79	-1	5	2	0	85
	184	-210	5	36	215	230
<b>CP</b>						
Origin	-48		0	103	188	243
Enroute	-11		-1	-5	-39	-56
Destination	21		-24	-6	21	12
	-38		-25	92	170	199
<b>US Rail / Short Line</b>						
Origin						
Enroute	1			-4		-3
Destination	0			-11	-2	-13
	1			-15	-2	-16



Port Unloads - 3/13/2019

	Prince Rupert	Vancouver	West Coast Total	Thunder Bay	Total
CN	38	225	263		263
CP		533	533	29	562
	38	758	796	29	825





**Port Terminal Status**

**Vancouver**

Daily Activity for 3/13/2019

	Cars Arrived	Cars Received in Interchange	Cars Delivered in Interchange	Cars Placed for Unloading	Loads on Wheels at Destination As of 3/13/2019
CN	159	207	2	239	270
CP	470		207	426	572
SRY		2		3	21

**Port Unloads**

	03/13	03/12	Week To Date	Last Week
CN	225	341	969	1,758
CP	533	364	1,306	2,127
SRY	6	11	25	70

**Age Profile of Loaded Cars Waiting Placement for Unloading**

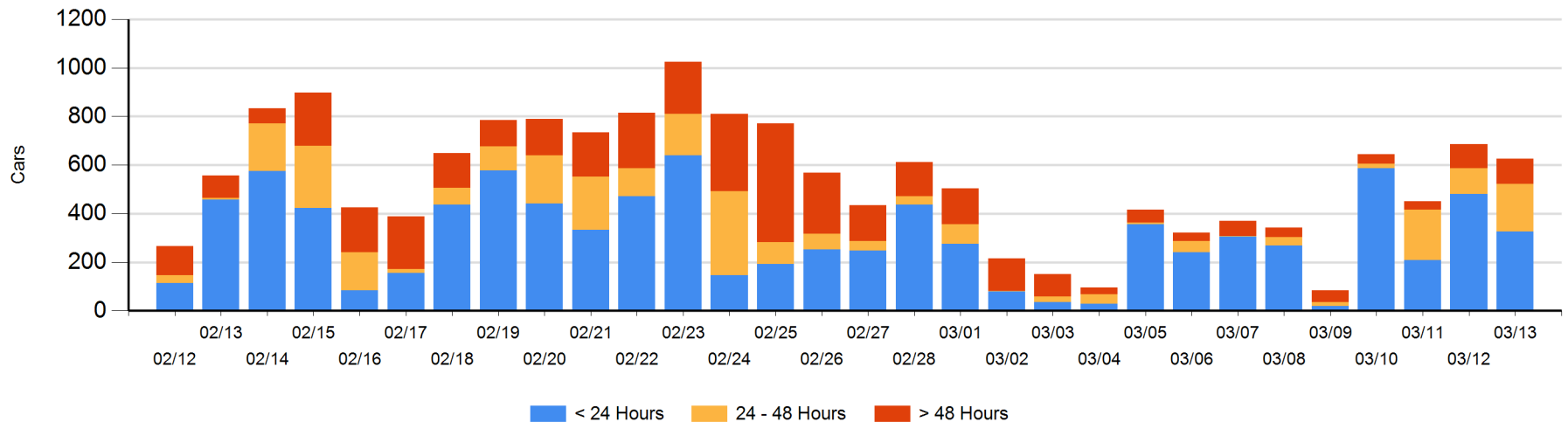
**Today**

	< 24 Hrs	24 - 48 Hrs	> 48-72 Hrs	> 72 Hrs	Total On Hand
CN	72	18		5	95
CP	254	177	31	69	531
SRY			1		1

**Change in Last 24 Hours**

	< 24 Hrs	24-48 Hrs	48 - 72 Hrs	> 72 Hrs
CN	26	18	-6	5
CP	-181	72	-42	49
SRY		-1	1	

**Loaded Cars on Hand Vancouver Waiting for Placement - Last 30 Days All Railways**



**Port Terminal Status**

**Prince Rupert**

Daily Activity for 3/13/2019

	Cars Arrived	Cars Received in Interchange	Cars Delivered in Interchange	Cars Placed for Unloading	Loads on Wheels at Destination As of 3/13/2019
CN	38			38	1

**Port Unloads**

	03/13	03/12	Week To Date	Last Week
CN	38	186	515	973

**Age Profile of Loaded Cars Waiting Placement for Unloading**

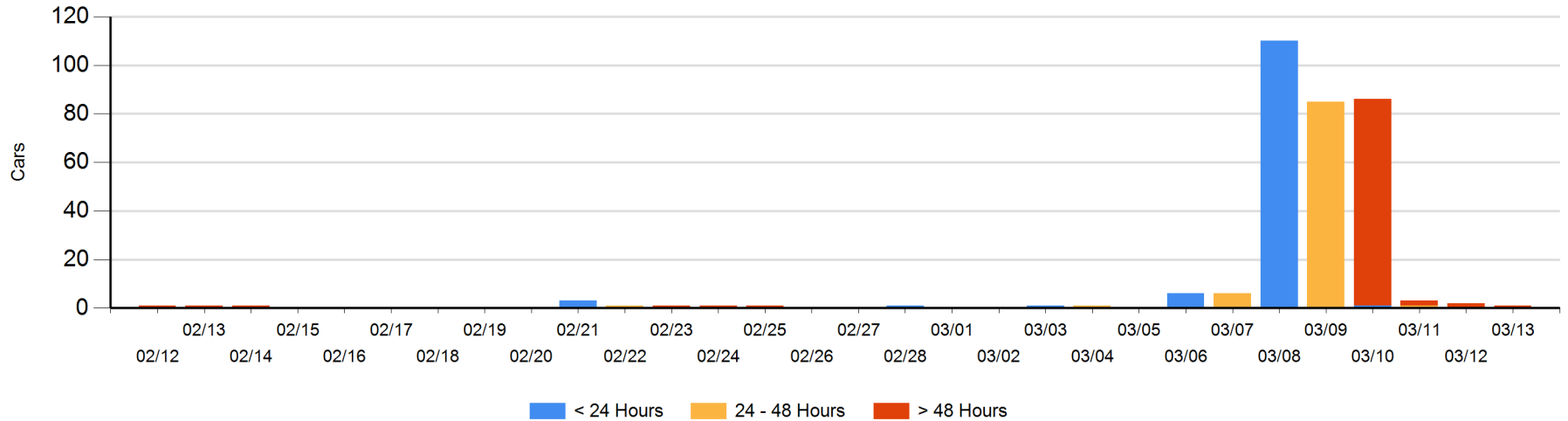
**Today**

	< 24 Hrs	24 - 48 Hrs	> 48-72 Hrs	> 72 Hrs	Total On Hand
CN				1	1

**Change in Last 24 Hours**

	< 24 Hrs	24-48 Hrs	48 - 72 Hrs	> 72 Hrs
CN			-1	0

Loaded Cars on Hand Prince Rupert Waiting for Placement - Last 30 Days All Railways



**Port Terminal Status**

**Thunder Bay**

Daily Activity for 3/13/2019

	Cars Arrived	Cars Received in Interchange	Cars Delivered in Interchange	Cars Placed for Unloading	Loads on Wheels at Destination As of 3/13/2019
CN					5
CP					6

**Port Unloads**

	03/13	03/12	Week To Date	Last Week
CN				
CP	29	73	161	57

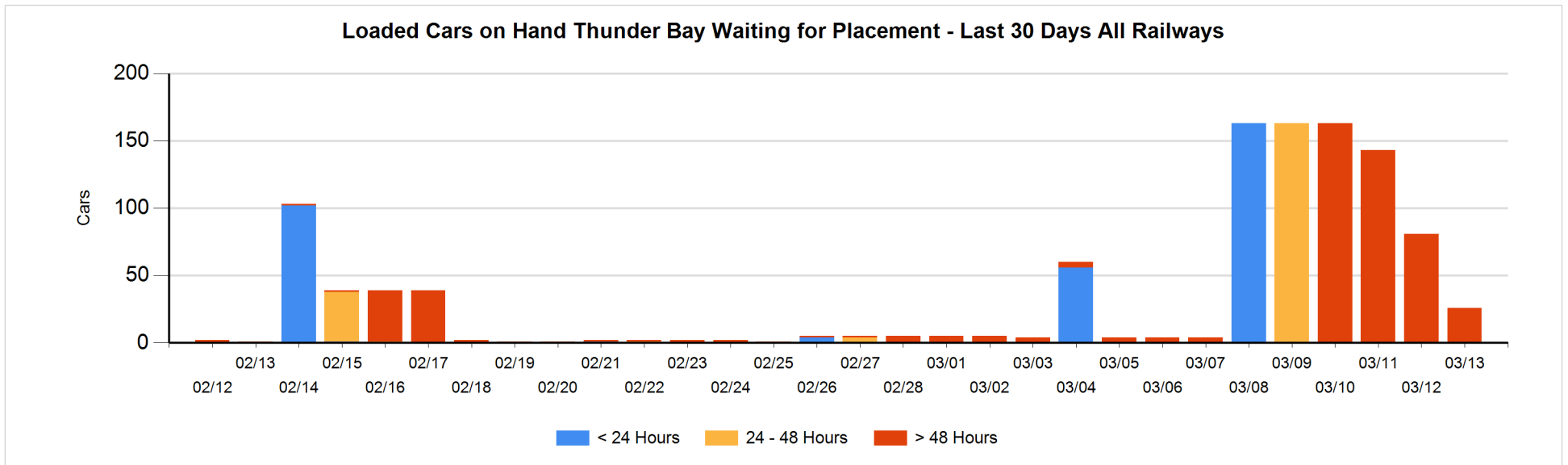
**Age Profile of Loaded Cars Waiting Placement for Unloading**

**Today**

	< 24 Hrs	24 - 48 Hrs	> 48-72 Hrs	> 72 Hrs	Total On Hand
CN					0
CP				26	26

**Change in Last 24 Hours**

	< 24 Hrs	24-48 Hrs	48 - 72 Hrs	> 72 Hrs
CN				
CP				-55



## Measurement Definitions

Loads on Wheels	<p>Count of loaded rail cars including all rail cars that have been released loaded at origin and have not been reported by the railway as unloaded at destination.</p> <p>Counts include all rail cars (hopper cars and boxcars) moving within a pipeline.</p>
Loads Not Moving	<p>Loaded rail cars for which the railways have not reported a movement event for 48 hours or more whether the rail car is at origin, enroute or at destination.</p>
Port Unloads	<p>Count of rail cars reported by railways as unloaded at the western port destinations of Vancouver, Prince Rupert and Thunder Bay.</p> <p>Unload counts include all rail cars (hopper cars and boxcars) unloaded by all receivers including major port terminals, transloaders and other receivers.</p>
Cars Arrived	<p>Count of rail cars reported as arrived at the destination railway terminal.</p>
Cars Received in Interchange	<p>Count of rail cars received in interchange by each railway within a destination railway terminal. Interchange activity is tracked for the Vancouver and Thunder Bay pipelines as applicable.</p>
Cars Delivered in Interchange	<p>Count of rail cars delivered in interchange by each railway within a destination railway terminal. Interchange activity is tracked for the Vancouver and Thunder Bay pipelines as applicable.</p>
Cars Placed for Unloading	<p>Count of rail cars reported by the railways as placed loaded at the receiver's facility for unloading.</p>
Loads on Wheels at Destination	<p>Count of rail cars that remain under load within the destination railway terminal including rail cars that have been reported as placed for unloading but not yet reported as unloaded.</p>
Waiting Placement for Unloading	<p>Count of rail cars that have been reported as arrived at the destination railway terminal but not reported as placed for unloading by the railway.</p> <p>For the Ports of Vancouver, Prince Rupert and Thunder Bay the count of rail cars waiting placement for unloading is categorized by age – i.e. the elapsed time from arrival at destination to the current report date.</p>