

SPEED READ

- Loads on wheels decreased overnight, reflecting reduced CP volumes offset by an increase in CN volumes. On a net basis, volumes fell due to reduced traffic in the Vancouver, E. Canada and Thunder Bay corridors offset by higher traffic in the USA/MEX and Prince Rupert corridors.
- Network fluidity deteriorated overnight, led by an increase in idle car counts on CP by 8% (+146) offset by a decline in idle car counts on CN by 6% (-111). The total count of cars for 4+ days on both railways decreased for the third consecutive day, down 18% (-362) overnight - now at 1,693 cars, the lowest seen in the last 30 days.
- Four days in Week 33 unloads now ahead of prior week's performance by 1,200 unloads, marking improved week over week performance across all three major ports - Vancouver, Thunder Bay and Prince Rupert.

Loads on Wheels

- Loads on wheels decreased 3% (-317) overnight, due to reduced volumes on CP offset by higher volumes on CN - combined total at 10,533 and 2% below the trailing 30-day average.
- On a net basis, the decline in loads on wheels reflects reduced volumes in the Vancouver, E. Canada and Thunder Bay corridors offset by higher traffic in the USA/MEX and Prince Rupert corridors.
- CN volumes increased slightly by 1% (+67) overnight, with higher traffic in the Prince Rupert and USA/MEX corridors offset by lower traffic in the E. Canada and Vancouver corridors. System wide CN loads on wheels now at 6,072 and 6% above the trailing 30-day average.
- CP volumes declined 8% (-370) overnight, driven by a decline in volumes across all corridors other than USA/MEX. CP system wide loads on wheels currently at 4,194 and 13% below the trailing 30-day average.
- Vancouver now at 5,895, declined 6% (-379) overnight, now 10% below the trailing 30-day average.
- The Prince Rupert pipeline now at 1,843, increased for the third consecutive day, up 4% (+72) overnight, and 9% above the trailing 30-day average.
- Thunder Bay volumes decreased slightly by 1% (-2) overnight - currently at 248 and 142% above the trailing 30-day average., with 98% of traffic moving on CP.

Hopper Car Rationing

- CN rationed 1,095 hopper cars in week 31.

Loads Not Moving

- **The count of cars not moving for 48+ hours increased slightly by 1% (+35) overnight, marking higher counts on CP offset by reduced counts on CN. Idle car counts now at 3,858 and 2% below the trailing 30-day average.**
- CN
 - **The count of idle cars for 48+ hours decreased 6% (-111) overnight - now at 1,771 cars.**
 - The number of cars idle for 4+ days decreased 9% (-84) overnight and have now decreased for the third consecutive day - currently at 821 cars, the lowest seen in the last 30 days.
 - The count of cars not moving for 7+ days declined 8% (-46) overnight - currently at 507 cars.
 - Vancouver represents 65% of all idle cars.
 - In total 67% of all idle cars are dwelling at origin locations.
- CP
 - **CP idle car counts for 48+ hours increased 8% (+146) overnight - currently at 2,087 cars.**

- The number of cars idle for 4+ days declined 24% (-278) overnight - currently at 872 cars.
- The number of cars idle for 7+ days declined 18% (-147) overnight - presently at 668 cars.
- Vancouver accounts for 70% of all idle cars.
- In total 76% of all idle cars are dwelling at origin locations.

Port Performance

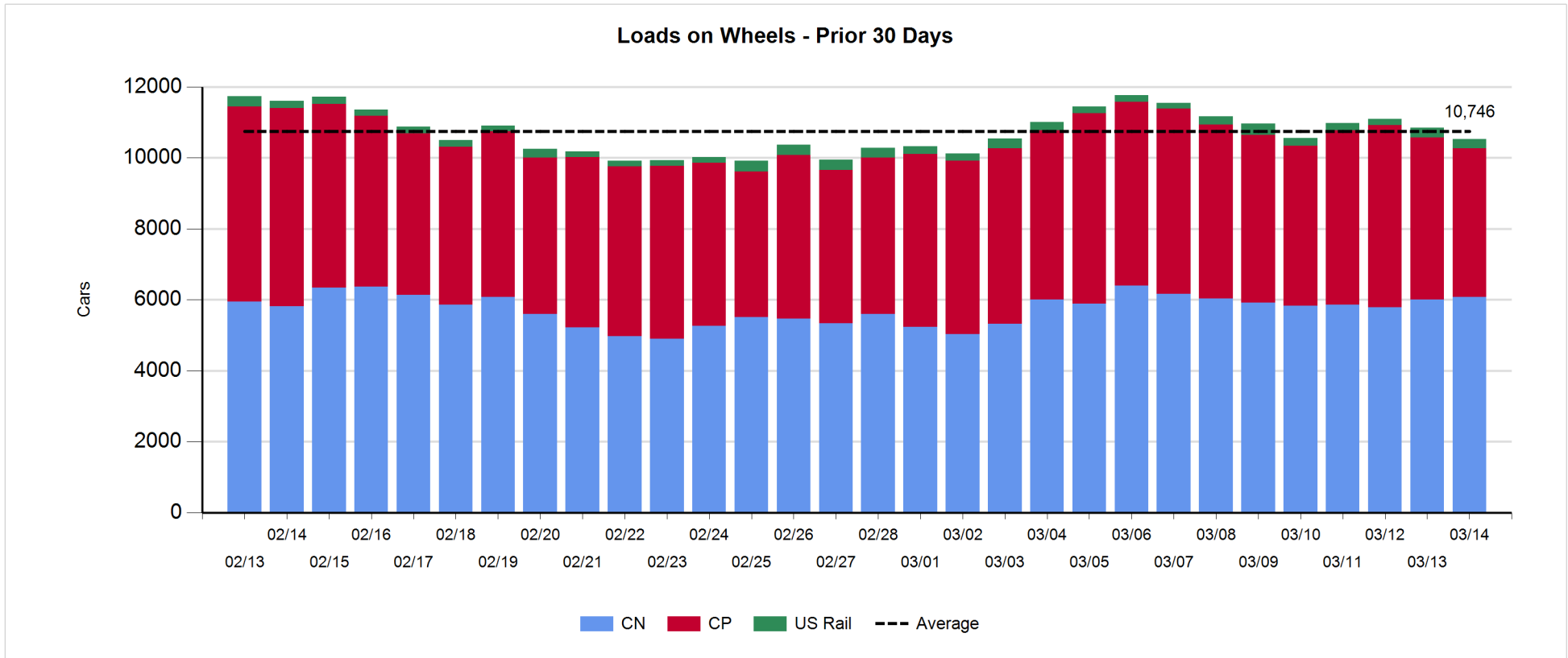
- CN and CP reported a total of 834 cars unloaded at the three major ports, now 4% above the trailing 30-day average. Four days in Week 33 unloads now ahead of last week's pace by 1,200 unloads, marking higher unloads across all three major ports - Vancouver, Thunder Bay and Prince Rupert.
- Vancouver
 - 625 unloads reported by CN and CP at the Port of Vancouver; CN - 349 and CP - 276. Four days in Week 33 unloads are tracking ahead of last week's performance by more than 850 unloads.
 - There are fewer than 600 cars on site at Vancouver with 350 cars arriving at the port in the last 24 hours.
 - CN and CP have more than 850 cars in British Columbia en route to Vancouver, with 300 cars at Kamloops and west, and 62% of traffic moving on CN.
- Prince Rupert
 - Prince Rupert reported 207 unloads, now ahead of last week's unloads after four days by more than 200 unloads.
 - Loads on wheels now above 1,000 cars - now at 1,843 cars.
 - There are 400 cars west of Jasper en route to Prince Rupert.
 - There are around 300 cars on site at Prince Rupert with 450 cars arriving at the port in the last 24 hours.
- Thunder Bay
 - 2 unloads were reported at Thunder Bay yesterday. Four days in Week 33 unloads are tracking ahead of last week's pace by 100 unloads.
 - There are 10 cars on site at Thunder Bay with 1 car arriving at the port in the prior 24 hours.
 - There are zero cars en route to Thunder Bay from Winnipeg and east.

Daily Loads on Wheels - 3/14/2019

	E Canada	Prince Rupert	Thunder Bay	USA/MEX	Vancouver	Total
CN	963	1,843	5	295	2,966	6,072
CP	507		243	536	2,908	4,194
Short Line	31				21	52
US Rail				215		215
	1,501	1,843	248	1,046	5,895	10,533

Change in Loads on Wheels - Prior 24 Hours

	E Canada	Prince Rupert	Thunder Bay	USA/MEX	Vancouver	Total
CN	-12	72	0	11	-4	67
CP	-62		-2	69	-375	-370
Short Line	-13				0	-13
US Rail				-1		-1
	-87	72	-2	79	-379	-317

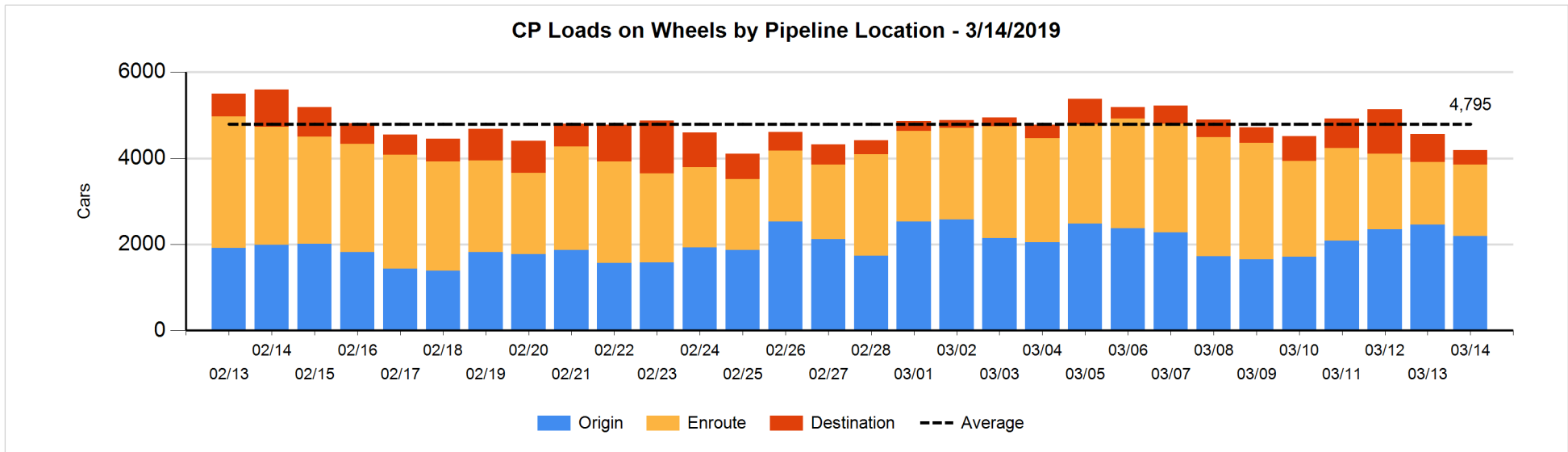
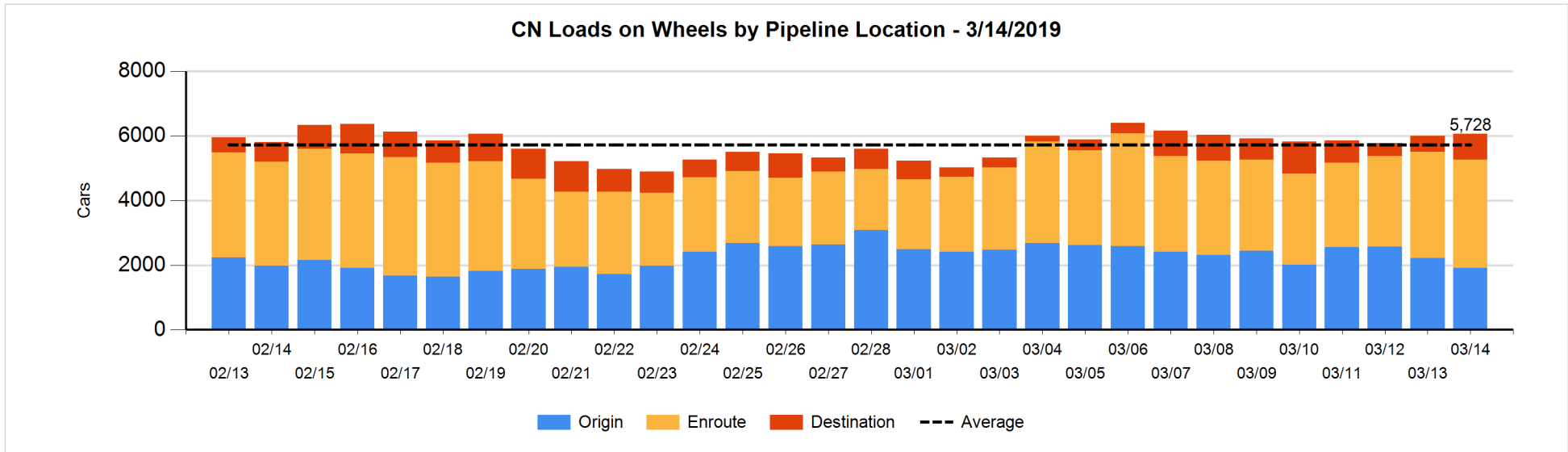


Daily Loads on Wheels By Pipeline Location - 3/14/2019

	E Canada	Prince Rupert	Thunder Bay	USA/MEX	Vancouver	Total
CN						
Origin	188	498		175	1,056	1,917
Enroute	539	1,065		104	1,634	3,342
Destination	236	280	5	16	276	813
	963	1,843	5	295	2,966	6,072
CP						
Origin	229		238	351	1,378	2,196
Enroute	257			151	1,244	1,652
Destination	21		5	34	286	346
	507		243	536	2,908	4,194
US Rail / Short Line						
Origin						
Enroute	4			144		148
Destination	27			71	21	119
	31			215	21	267

Change in Daily Loads on Wheels By Pipeline Location - Prior 24 Hours

	E Canada	Prince Rupert	Thunder Bay	USA/MEX	Vancouver	Total
CN						
Origin	29	50		16	-393	-298
Enroute	-75	-257		-1	383	50
Destination	34	279	0	-4	6	315
	-12	72	0	11	-4	67
CP						
Origin	-123		0	91	-226	-258
Enroute	101		-1	-40	137	197
Destination	-40		-1	18	-286	-309
	-62		-2	69	-375	-370
US Rail / Short Line						
Origin						
Enroute	1			-6		-5
Destination	-14			5	0	-9
	-13			-1	0	-14

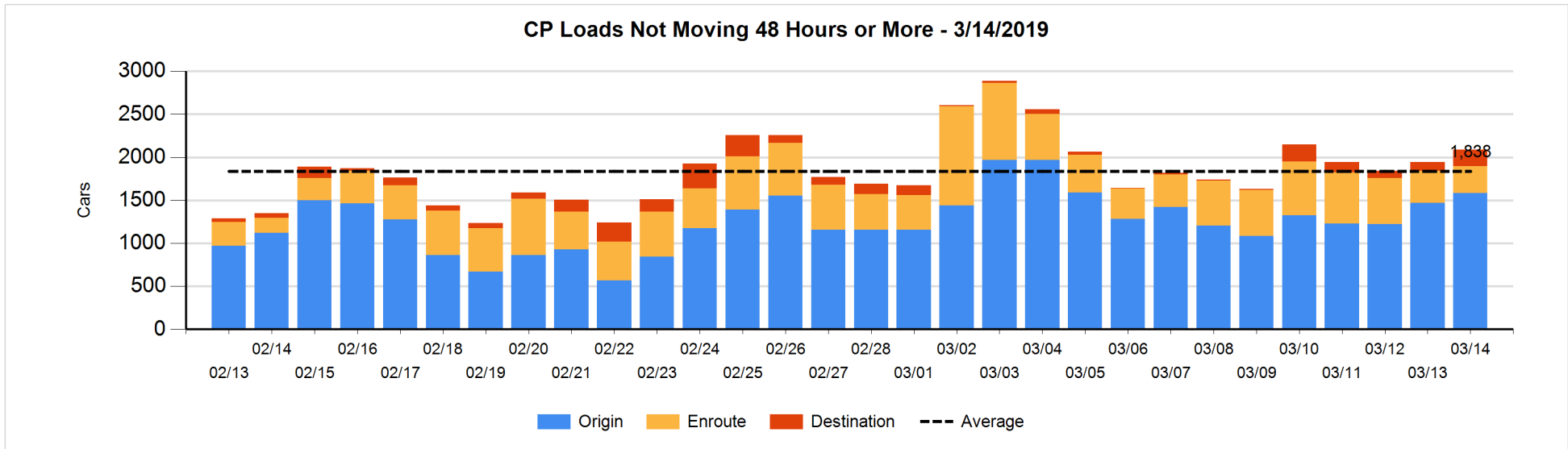
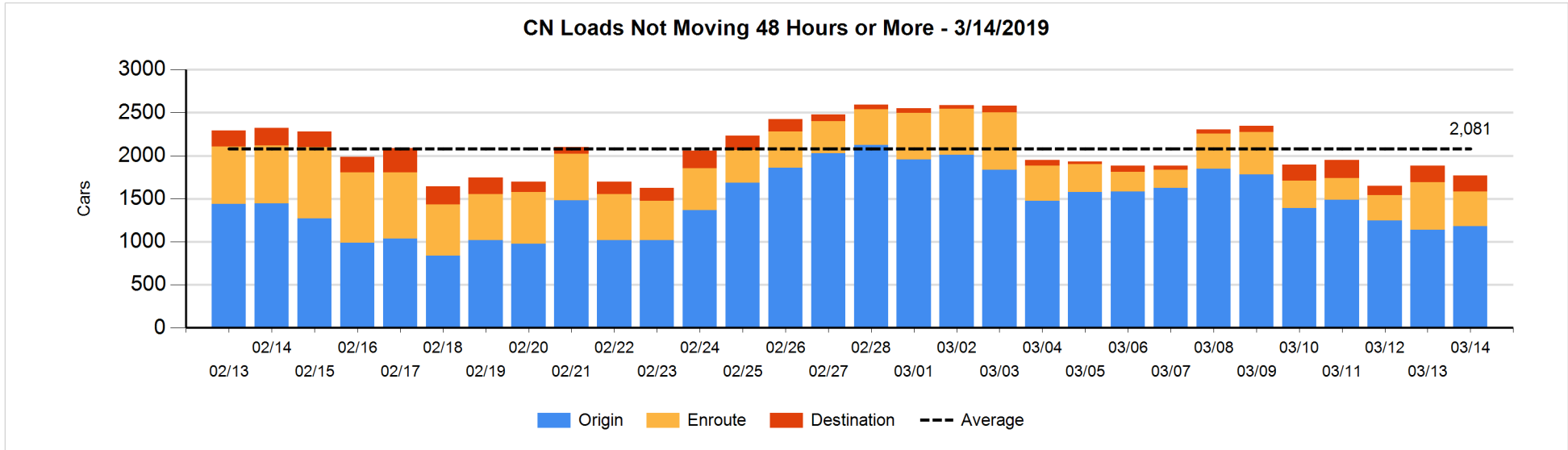


Loads Not Moving 48 Hours or More - 3/14/2019

	E Canada	Prince Rupert	Thunder Bay	USA/MEX	Vancouver	Total
CN						
Origin	108	140		48	887	1183
Enroute	121	21		11	247	400
Destination	164	1	5	7	11	188
	393	162	5	66	1145	1771
CP						
Origin	225		113	212	1033	1583
Enroute	20			31	262	313
Destination	21		4		166	191
	266		117	243	1461	2087
US Rail / Short Line						
Origin						
Enroute	2			14		16
Destination	7			10	18	35
	9			24	18	51

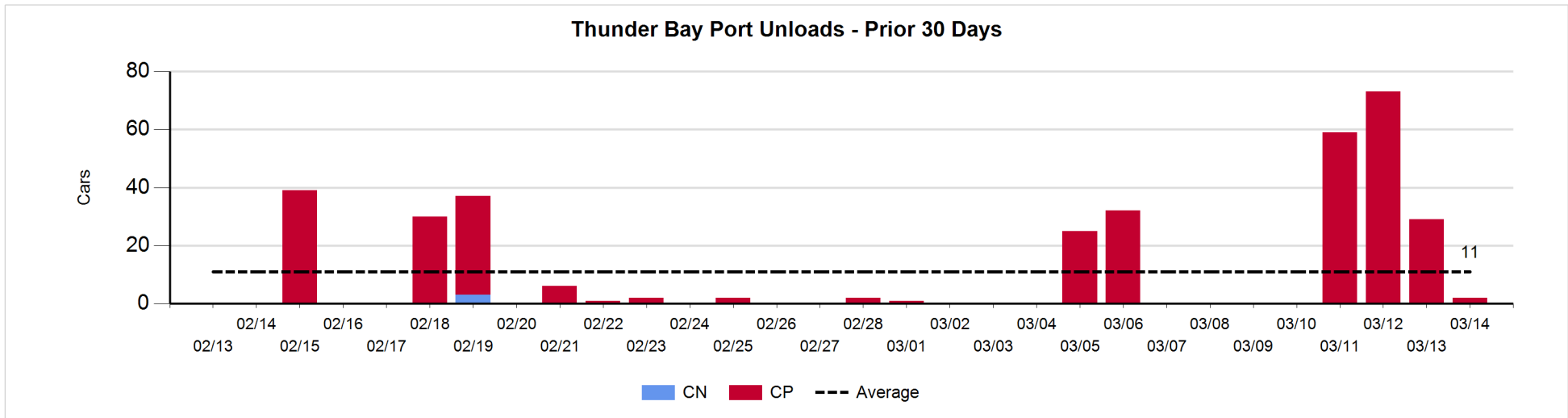
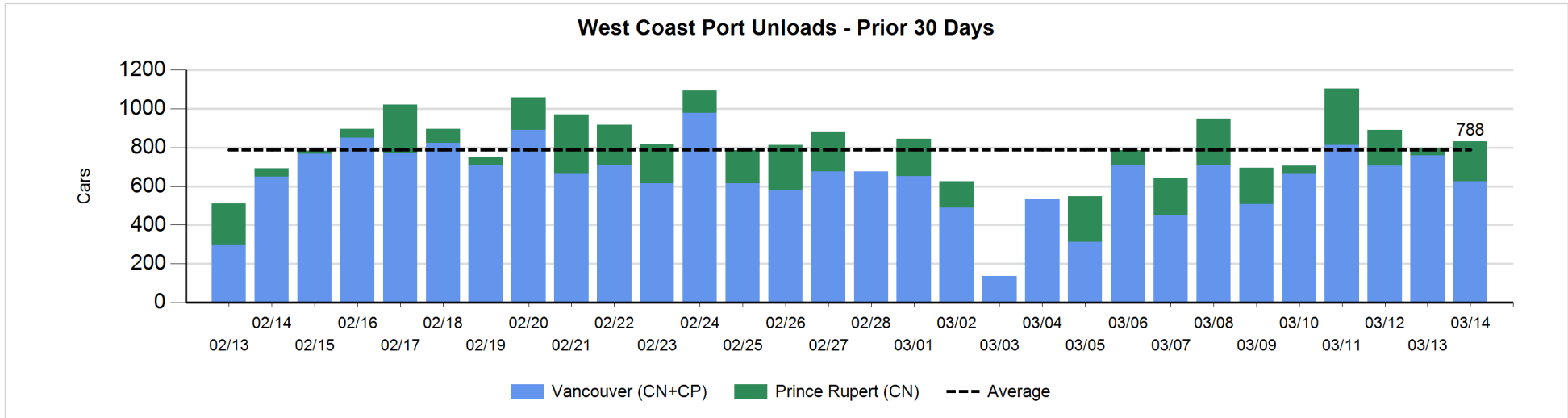
Change in Loads Not Moving 48 Hours or More - 3/14/2019

	E Canada	Prince Rupert	Thunder Bay	USA/MEX	Vancouver	Total
CN						
Origin	-48	124		16	-49	43
Enroute	-93	-6		-3	-47	-149
Destination	-10	0	0	3	2	-5
	-151	118	0	16	-94	-111
CP						
Origin	-2		112	-4	11	117
Enroute	-38			-13	-13	-64
Destination	0		-2	-4	99	93
	-40		110	-21	97	146
US Rail / Short Line						
Origin						
Enroute	0			-4		-4
Destination	0			-2	2	0
	0			-6	2	-4



Port Unloads - 3/14/2019

	Prince Rupert	Vancouver	West Coast Total	Thunder Bay	Total
CN	207	349	556		556
CP		276	276	2	278
	207	625	832	2	834



Port Terminal Status

Vancouver

Daily Activity for 3/14/2019

	Cars Arrived	Cars Received in Interchange	Cars Delivered in Interchange	Cars Placed for Unloading	Loads on Wheels at Destination As of 3/14/2019
CN	241	212	1	337	276
CP	108		212	192	286
SRY	2	1		9	21

Port Unloads

	03/14	03/13	Week To Date	Last Week
CN	349	225	1,318	1,758
CP	276	533	1,582	2,127
SRY	9	6	34	70

Age Profile of Loaded Cars Waiting Placement for Unloading

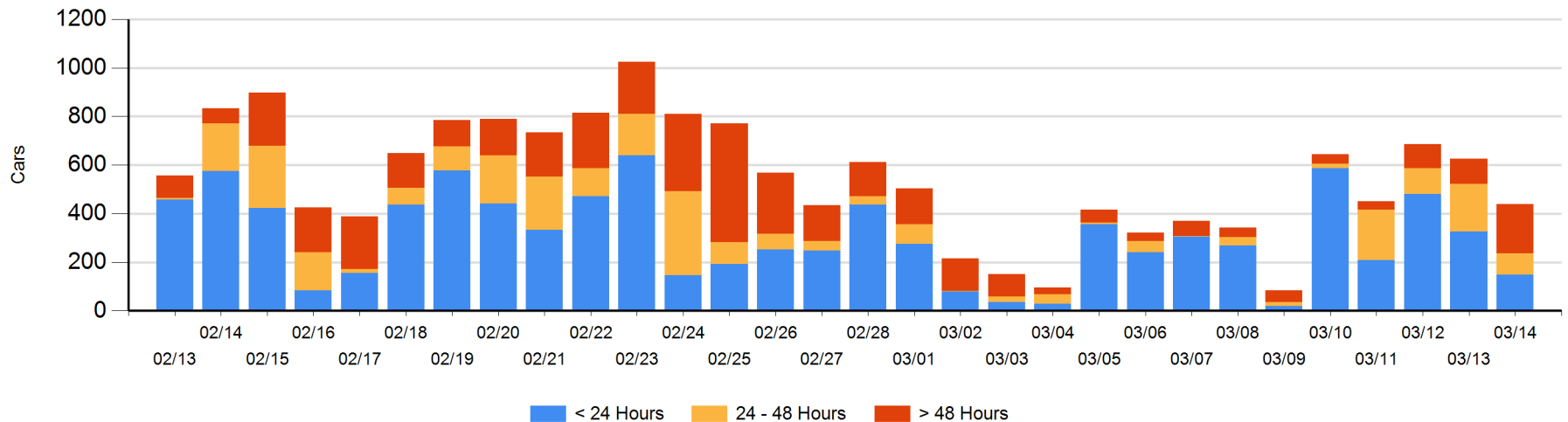
Today

	< 24 Hrs	24 - 48 Hrs	> 48-72 Hrs	> 72 Hrs	Total On Hand
CN	148	35	18	1	202
CP		54	133	49	236
SRY				1	1

Change in Last 24 Hours

	< 24 Hrs	24-48 Hrs	48 - 72 Hrs	> 72 Hrs
CN	76	17	18	-4
CP	-254	-123	102	-20
SRY			-1	1

Loaded Cars on Hand Vancouver Waiting for Placement - Last 30 Days All Railways



Port Terminal Status

Prince Rupert

Daily Activity for 3/14/2019

	Cars Arrived	Cars Received in Interchange	Cars Delivered in Interchange	Cars Placed for Unloading	Loads on Wheels at Destination As of 3/14/2019
CN	440			343	280

Port Unloads

	03/14	03/13	Week To Date	Last Week
CN	207	38	722	973

Age Profile of Loaded Cars Waiting Placement for Unloading

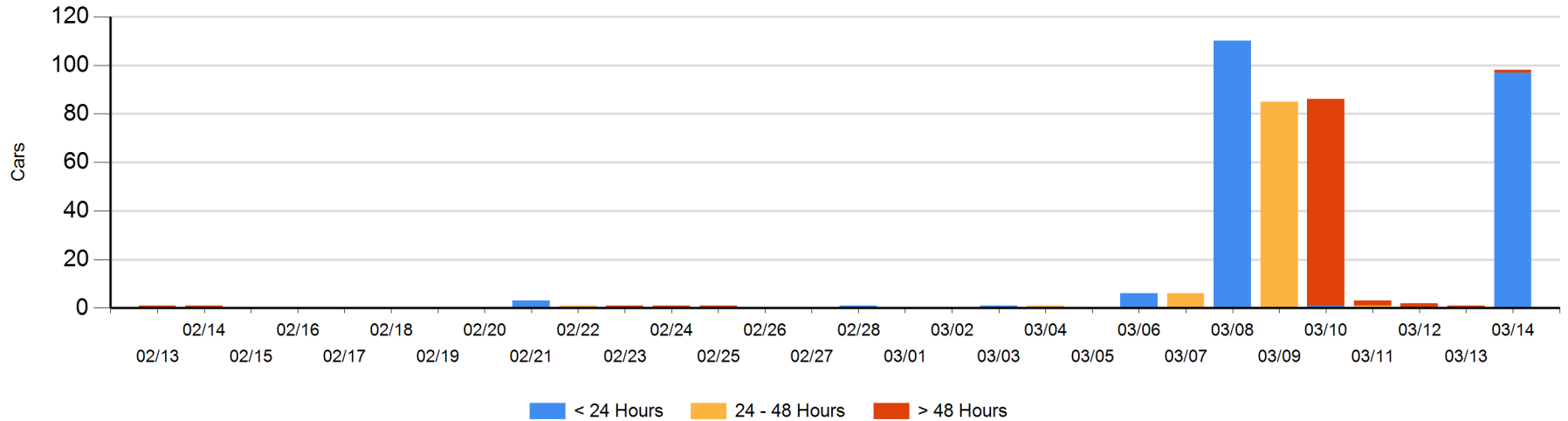
Today

	< 24 Hrs	24 - 48 Hrs	> 48-72 Hrs	> 72 Hrs	Total On Hand
CN	97			1	98

Change in Last 24 Hours

	< 24 Hrs	24-48 Hrs	48 - 72 Hrs	> 72 Hrs
CN	97			0

Loaded Cars on Hand Prince Rupert Waiting for Placement - Last 30 Days All Railways



Port Terminal Status

Thunder Bay

Daily Activity for 3/14/2019

	Cars Arrived	Cars Received in Interchange	Cars Delivered in Interchange	Cars Placed for Unloading	Loads on Wheels at Destination As of 3/14/2019
CN					5
CP	1				5

Port Unloads

	03/14	03/13	Week To Date	Last Week
CN				
CP	2	29	163	57

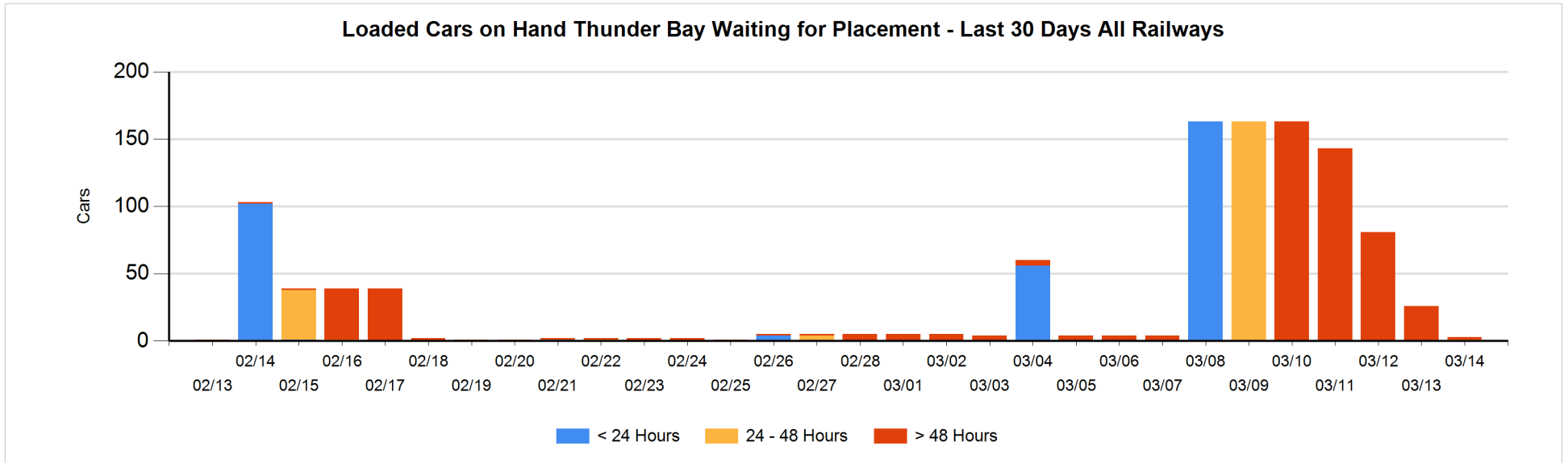
Age Profile of Loaded Cars Waiting Placement for Unloading

Today

	< 24 Hrs	24 - 48 Hrs	> 48-72 Hrs	> 72 Hrs	Total On Hand
CN					0
CP		1		2	3

Change in Last 24 Hours

	< 24 Hrs	24-48 Hrs	48 - 72 Hrs	> 72 Hrs
CN				
CP		1		-24



Measurement Definitions

Loads on Wheels	<p>Count of loaded rail cars including all rail cars that have been released loaded at origin and have not been reported by the railway as unloaded at destination.</p> <p>Counts include all rail cars (hopper cars and boxcars) moving within a pipeline.</p>
Loads Not Moving	<p>Loaded rail cars for which the railways have not reported a movement event for 48 hours or more whether the rail car is at origin, enroute or at destination.</p>
Port Unloads	<p>Count of rail cars reported by railways as unloaded at the western port destinations of Vancouver, Prince Rupert and Thunder Bay.</p> <p>Unload counts include all rail cars (hopper cars and boxcars) unloaded by all receivers including major port terminals, transloaders and other receivers.</p>
Cars Arrived	<p>Count of rail cars reported as arrived at the destination railway terminal.</p>
Cars Received in Interchange	<p>Count of rail cars received in interchange by each railway within a destination railway terminal. Interchange activity is tracked for the Vancouver and Thunder Bay pipelines as applicable.</p>
Cars Delivered in Interchange	<p>Count of rail cars delivered in interchange by each railway within a destination railway terminal. Interchange activity is tracked for the Vancouver and Thunder Bay pipelines as applicable.</p>
Cars Placed for Unloading	<p>Count of rail cars reported by the railways as placed loaded at the receiver's facility for unloading.</p>
Loads on Wheels at Destination	<p>Count of rail cars that remain under load within the destination railway terminal including rail cars that have been reported as placed for unloading but not yet reported as unloaded.</p>
Waiting Placement for Unloading	<p>Count of rail cars that have been reported as arrived at the destination railway terminal but not reported as placed for unloading by the railway.</p> <p>For the Ports of Vancouver, Prince Rupert and Thunder Bay the count of rail cars waiting placement for unloading is categorized by age – i.e. the elapsed time from arrival at destination to the current report date.</p>