

## SPEED READ

- Loads on wheels decreased overnight, marking a decline in both CN and CP volumes. On a net basis, volumes decreased due to reduced volumes across all corridors - Vancouver, Thunder Bay, Prince Rupert, USA/MEX and E. Canada.
- Network fluidity deteriorated overnight, led by an increase in idle car counts on both CN and CP by 35% (+295) and 107% (+608), respectively. The total count of cars for 4+ days on both railways fell 8% (-67) overnight - currently at 802 cars, the lowest seen in the last 30 days.
- Three days in Week 35 unloads now ahead of prior week's performance by 550 unloads, marking improved week over week performance at Vancouver and Thunder Bay offset by reduced unloads at Prince Rupert.

---

## Loads on Wheels

- Loads on wheels fell 8% (-763) overnight, due to lower volumes on both CN and CP - combined total at 9,180, the lowest seen in the last 30 days, and 14% below the trailing 30-day average.
- On a net basis, the decline in loads on wheels indicates reduced volumes across all corridors - Vancouver, Thunder Bay, Prince Rupert, USA/MEX and E. Canada.
- CN volumes declined 7% (-385) overnight, with lower traffic across all corridors - Vancouver, Prince Rupert, USA/MEX and E. Canada. System wide CN loads on wheels now at 4,914, the lowest seen in the last 30 days, and 16% below the trailing 30-day average.
- CP volumes decreased significantly by 12% (-518) overnight, driven by a decline in volumes across all corridors - Vancouver, Thunder Bay, USA/MEX and E. Canada. CP system wide loads on wheels now at 3,748, the lowest seen in the last 30 days, and 17% below the trailing 30-day average.
- Vancouver presently at 4,700, the lowest seen in the last 30 days, fell 9% (-485) overnight, now 24% below the trailing 30-day average.
- The Prince Rupert pipeline presently at 1,571, decreased 6% (-105) overnight, and 11% below the trailing 30-day average.
- Thunder Bay volumes declined 5% (-28) overnight - presently at 504 and 115% above the trailing 30-day average, with 27% of traffic moving on CP.

## Hopper Car Rationing

- CN rationed 1,370 hopper cars in week 33.

## Loads Not Moving

- **The count of cars not moving for 48+ hours increased significantly by 64% (+903) overnight, marking higher counts on both CN and CP. Idle car counts currently at 2,323 and 32% below the trailing 30-day average.**
- CN
  - **The count of idle cars for 48+ hours increased 35% (+295) overnight - currently at 1,145 cars.**
  - The number of cars idle for 4+ days fell 16% (-88) overnight - currently at 457 cars.
  - The count of cars not moving for 7+ days fell 24% (-33) overnight - presently at 105 cars.
  - Vancouver represents 16% of all idle cars.
  - In total 77% of all idle cars are dwelling at origin locations.
- CP
  - **CP idle car counts for 48+ hours increased significantly by 107% (+608) overnight - presently at 1,178 cars.**
  - The number of cars idle for 4+ days increased 6% (+21) overnight - presently at 345 cars.
  - The number of cars idle for 7+ days increased 2% (+7) overnight - now at 251 cars.

- Vancouver accounts for 65% of all idle cars.
- In total 63% of all idle cars are dwelling at origin locations.

### **Port Performance**

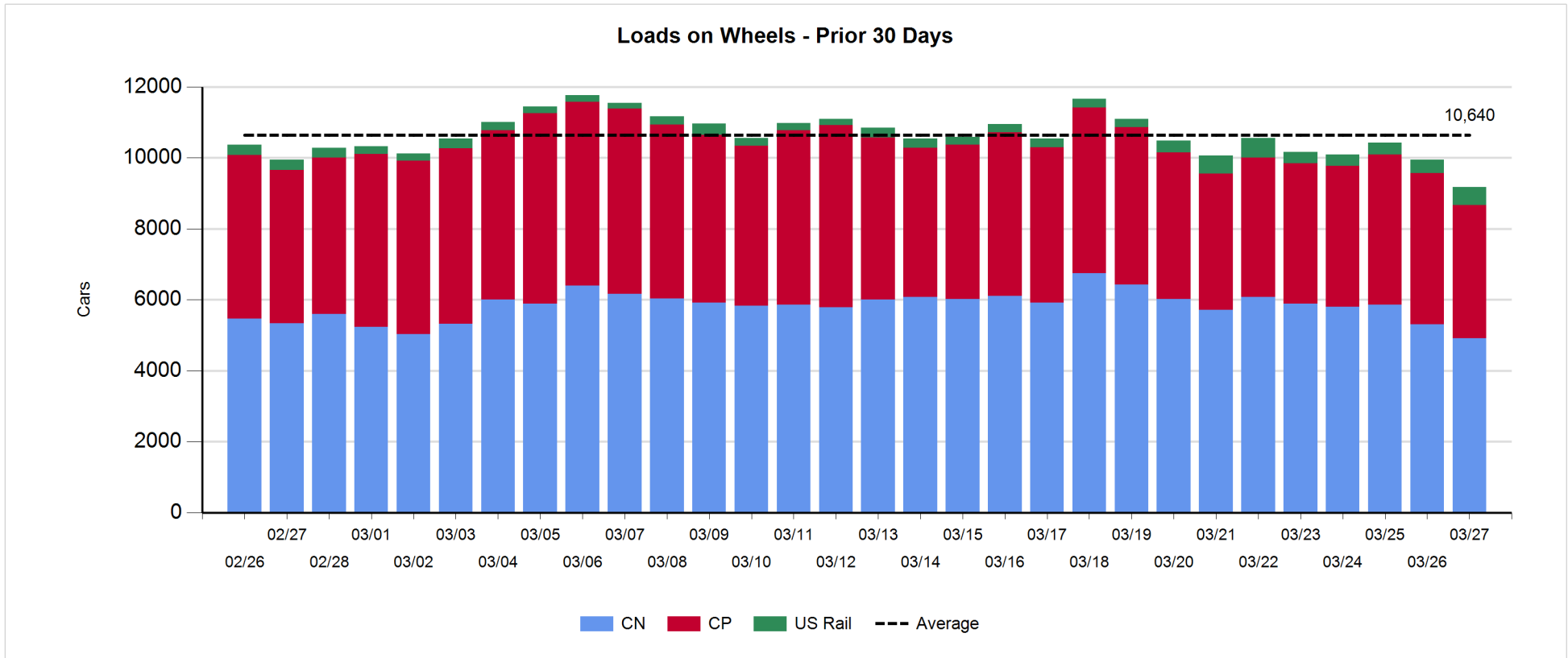
- CN and CP reported a total of 990 cars unloaded at the three major ports, now 19% above the trailing 30-day average. Three days in Week 35 unloads now ahead of last week's pace by 550 unloads, marking higher unloads at Vancouver and Thunder Bay offset by reduced unloads at Prince Rupert.
- Vancouver
  - 759 unloads reported by CN and CP at the Port of Vancouver; CN - 300 and CP - 459. Three days in Week 35 unloads are tracking ahead of last week's performance by around 750 unloads.
  - There are 1,200 cars on site at Vancouver with around 1,000 cars arriving at the port in the last 24 hours.
  - CN and CP have more than 900 cars in British Columbia en route to Vancouver, with 450 cars at Kamloops and west, and 66% of traffic moving on CP.
- Prince Rupert
  - Prince Rupert reported 201 unloads, now behind last week's unloads after three days by 200 unloads.
  - Loads on wheels now above 1,000 cars - now at 1,571 cars.
  - There are more than 300 cars west of Jasper en route to Prince Rupert.
  - There are more than 300 cars on site at Prince Rupert with 400 cars arriving at the port in the last 24 hours.
- Thunder Bay
  - 30 unloads were reported at Thunder Bay yesterday. Three days in Week 35 unloads are tracking ahead of last week's pace by 16 unloads.
  - There are 1 car on site at Thunder Bay with 1 car arriving at the port in the prior 24 hours.
  - There are 5 cars en route to Thunder Bay from Winnipeg and east.

**Daily Loads on Wheels - 3/27/2019**

	E Canada	Prince Rupert	Thunder Bay	USA/MEX	Vancouver	Total
CN	888	1,571	367	187	1,901	4,914
CP	351		137	545	2,715	3,748
Short Line	38				84	122
US Rail				396		396
	1,277	1,571	504	1,128	4,700	9,180

**Change in Loads on Wheels - Prior 24 Hours**

	E Canada	Prince Rupert	Thunder Bay	USA/MEX	Vancouver	Total
CN	-82	-105	0	-63	-135	-385
CP	-41		-28	-106	-343	-518
Short Line	33				-7	26
US Rail				114		114
	-90	-105	-28	-55	-485	-763

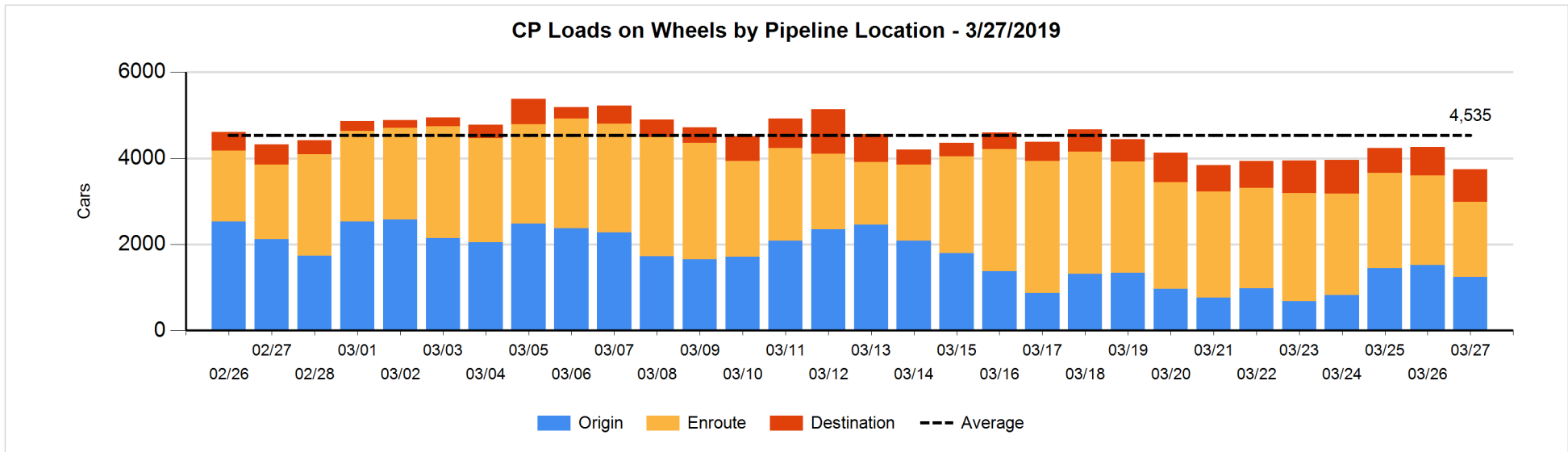
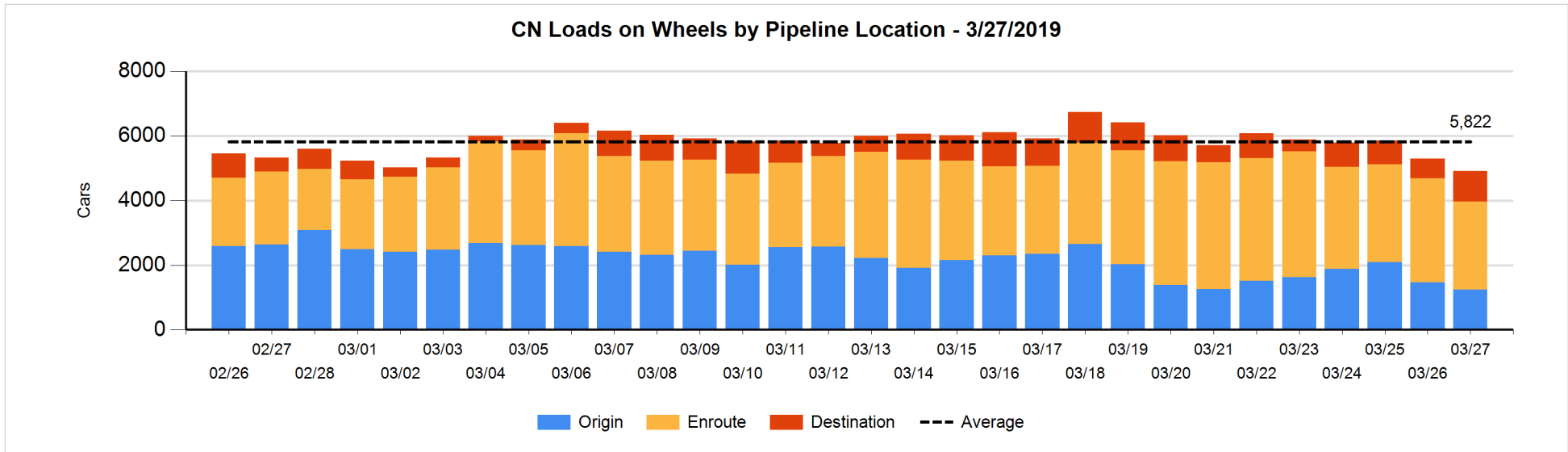


**Daily Loads on Wheels By Pipeline Location - 3/27/2019**

	E Canada	Prince Rupert	Thunder Bay	USA/MEX	Vancouver	Total
CN						
Origin	23	711	177	49	276	1,236
Enroute	719	547	189	133	1,146	2,734
Destination	146	313	1	5	479	944
	888	1,571	367	187	1,901	4,914
CP						
Origin	142		130	257	709	1,238
Enroute	91		7	288	1,360	1,746
Destination	118				646	764
	351		137	545	2,715	3,748
US Rail / Short Line						
Origin						
Enroute	2			300		302
Destination	36			96	84	216
	38			396	84	518

**Change in Daily Loads on Wheels By Pipeline Location - Prior 24 Hours**

	E Canada	Prince Rupert	Thunder Bay	USA/MEX	Vancouver	Total
CN						
Origin	-3	0	-189	-6	-25	-223
Enroute	-57	-297	189	-54	-277	-496
Destination	-22	192	0	-3	167	334
	-82	-105	0	-63	-135	-385
CP						
Origin	4		1	0	-287	-282
Enroute	-145		0	-82	-107	-334
Destination	100		-29	-24	51	98
	-41		-28	-106	-343	-518
US Rail / Short Line						
Origin						
Enroute	0			114		114
Destination	33			0	-7	26
	33			114	-7	140

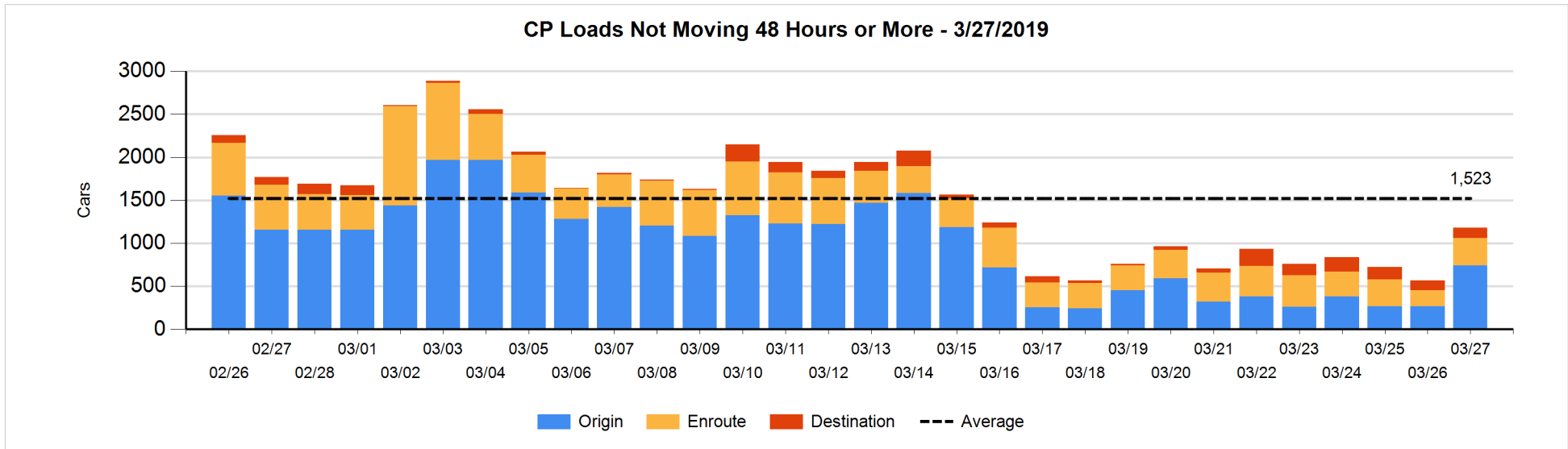
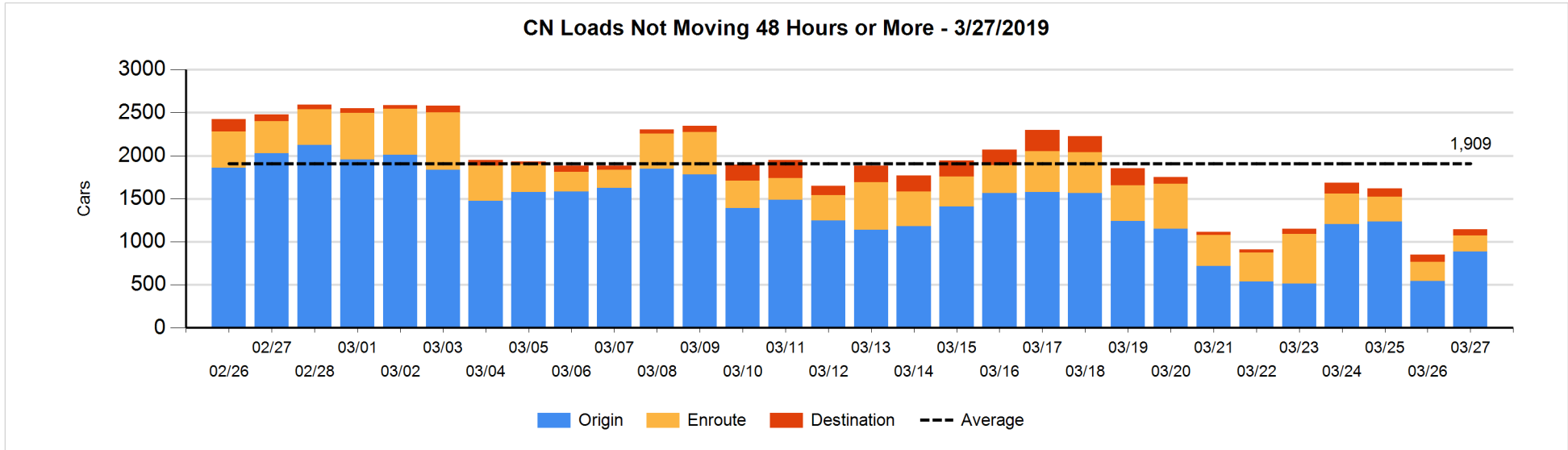


**Loads Not Moving 48 Hours or More - 3/27/2019**

	E Canada	Prince Rupert	Thunder Bay	USA/MEX	Vancouver	Total
<b>CN</b>						
Origin	1	711		41	132	885
Enroute	149	15		2	20	186
Destination	29	3	1	5	36	74
	179	729	1	48	188	1145
<b>CP</b>						
Origin	138		35	126	444	743
Enroute	43		1	59	216	319
Destination	5				111	116
	186		36	185	771	1178
<b>US Rail / Short Line</b>						
Origin						
Enroute				22		22
Destination	1			41	19	61
	1			63	19	83

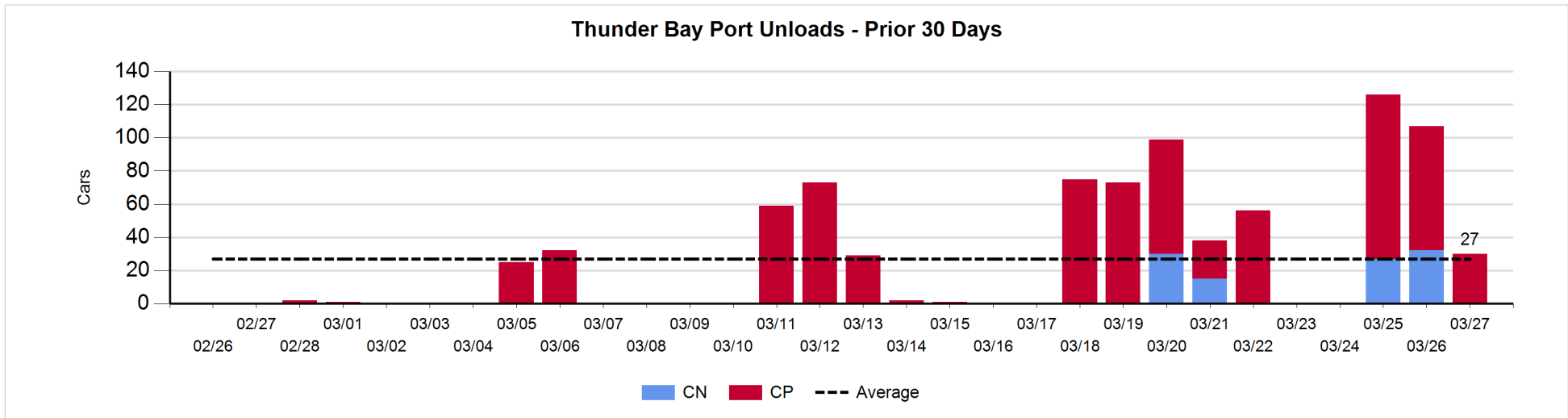
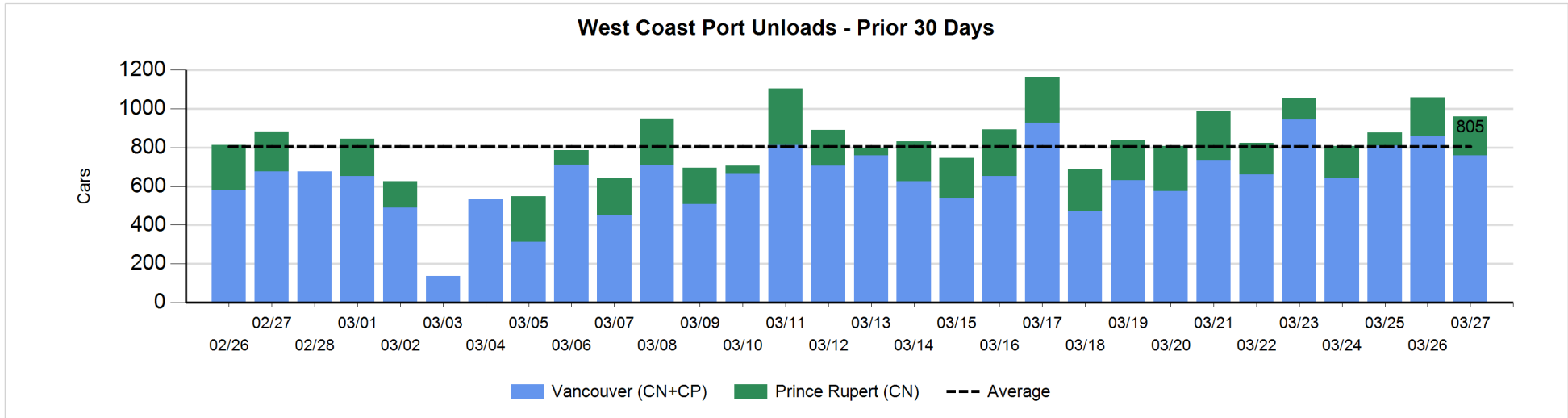
**Change in Loads Not Moving 48 Hours or More - 3/27/2019**

	E Canada	Prince Rupert	Thunder Bay	USA/MEX	Vancouver	Total
<b>CN</b>						
Origin	-24	505	-1	-1	-135	344
Enroute	-27	4		0	-18	-41
Destination	-5	-2	0	-2	1	-8
	-56	507	-1	-3	-152	295
<b>CP</b>						
Origin	25		11	0	439	475
Enroute	3		0	43	86	132
Destination	3		-1		-1	1
	31		10	43	524	608
<b>US Rail / Short Line</b>						
Origin						
Enroute				-1		-1
Destination	-1			-12	-5	-18
	-1			-13	-5	-19



**Port Unloads - 3/27/2019**

	Prince Rupert	Vancouver	West Coast Total	Thunder Bay	Total
CN	201	300	501		501
CP		459	459	30	489
	201	759	960	30	990





**Port Terminal Status**

**Vancouver**

Daily Activity for 3/27/2019

	Cars Arrived	Cars Received in Interchange	Cars Delivered in Interchange	Cars Placed for Unloading	Loads on Wheels at Destination As of 3/27/2019
CN	219	317	290	319	479
CP	766	289	319	465	646
SRY		3		13	84

**Port Unloads**

	03/27	03/26	Week To Date	Last Week
CN	300	421	1,018	2,358
CP	459	441	1,413	2,302
SRY	15	11	42	78

**Age Profile of Loaded Cars Waiting Placement for Unloading**

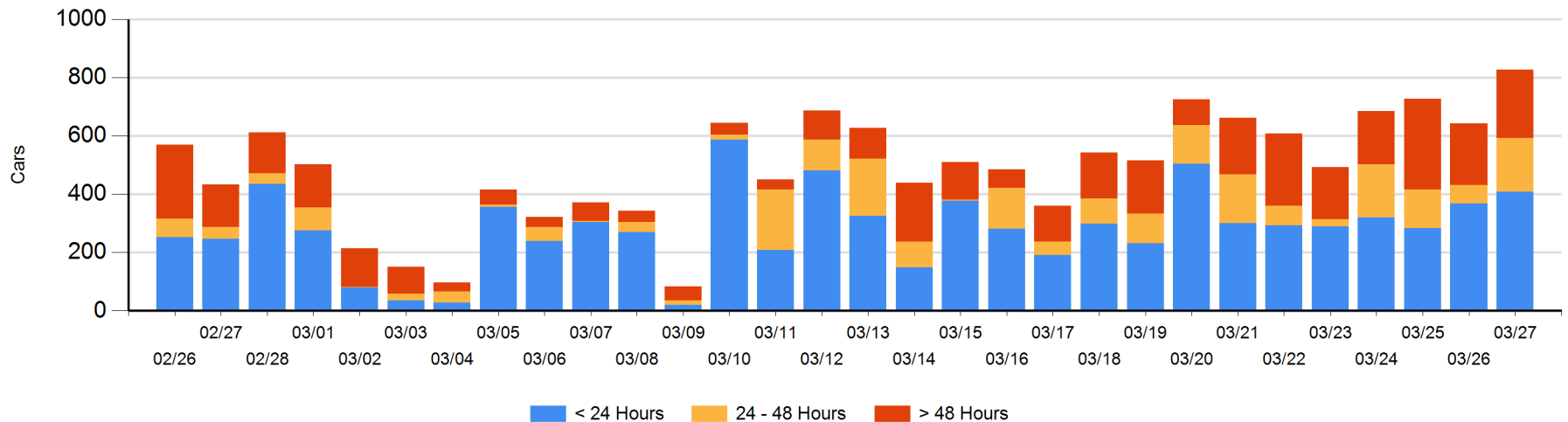
**Today**

	< 24 Hrs	24 - 48 Hrs	> 48-72 Hrs	> 72 Hrs	Total On Hand
CN	66	14	50	58	188
CP	342	171	14	112	639
SRY					0

**Change in Last 24 Hours**

	< 24 Hrs	24-48 Hrs	48 - 72 Hrs	> 72 Hrs
CN	18	-36	49	-10
CP	22	157	-9	-7
SRY				

**Loaded Cars on Hand Vancouver Waiting for Placement - Last 30 Days All Railways**



**Port Terminal Status**

**Prince Rupert**

Daily Activity for 3/27/2019

	Cars Arrived	Cars Received in Interchange	Cars Delivered in Interchange	Cars Placed for Unloading	Loads on Wheels at Destination As of 3/27/2019
CN	393			393	313

**Port Unloads**

	03/27	03/26	Week To Date	Last Week
CN	201	197	464	1,343

**Age Profile of Loaded Cars Waiting Placement for Unloading**

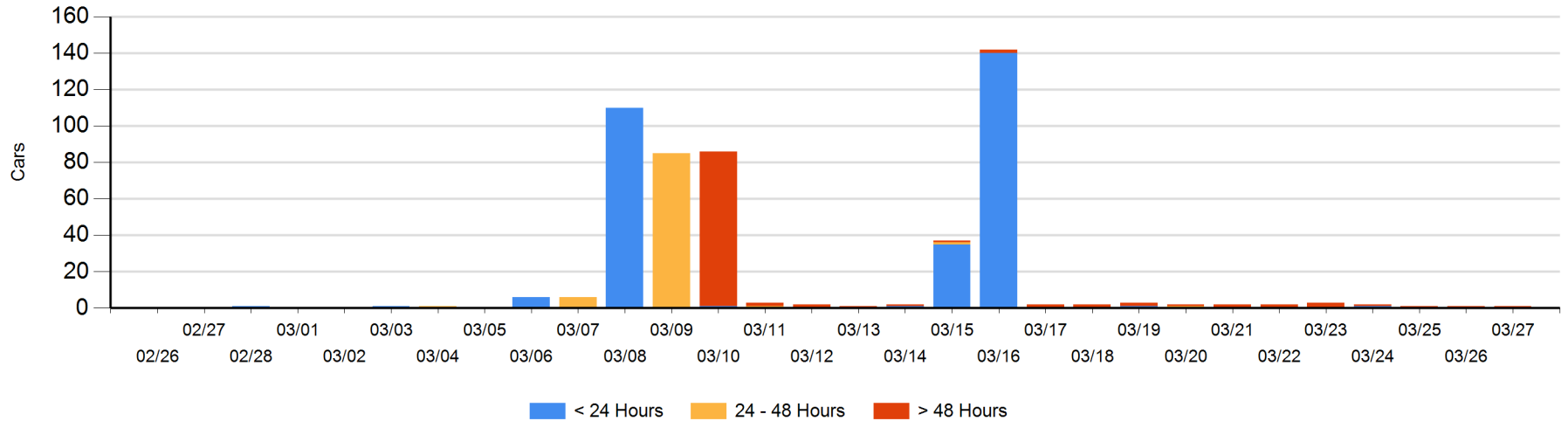
**Today**

	< 24 Hrs	24 - 48 Hrs	> 48-72 Hrs	> 72 Hrs	Total On Hand
CN				1	1

**Change in Last 24 Hours**

	< 24 Hrs	24-48 Hrs	48 - 72 Hrs	> 72 Hrs
CN				0

Loaded Cars on Hand Prince Rupert Waiting for Placement - Last 30 Days All Railways



**Port Terminal Status**

**Thunder Bay**

Daily Activity for 3/27/2019

	Cars Arrived	Cars Received in Interchange	Cars Delivered in Interchange	Cars Placed for Unloading	Loads on Wheels at Destination As of 3/27/2019
CN					1
CP	1			1	

**Port Unloads**

	03/27	03/26	Week To Date	Last Week
CN		32	59	45
CP	30	75	204	296

**Age Profile of Loaded Cars Waiting Placement for Unloading**

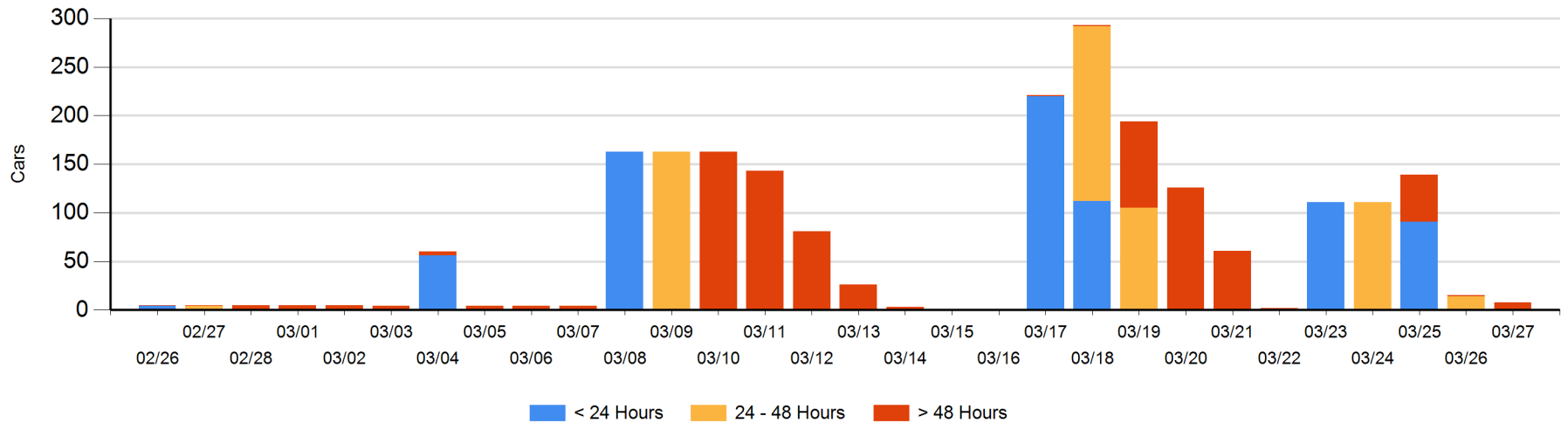
**Today**

	< 24 Hrs	24 - 48 Hrs	> 48-72 Hrs	> 72 Hrs	Total On Hand
CN					0
CP			8		8

**Change in Last 24 Hours**

	< 24 Hrs	24-48 Hrs	48 - 72 Hrs	> 72 Hrs
CN				
CP		-14	8	-1

Loaded Cars on Hand Thunder Bay Waiting for Placement - Last 30 Days All Railways



## Measurement Definitions

Loads on Wheels	<p>Count of loaded rail cars including all rail cars that have been released loaded at origin and have not been reported by the railway as unloaded at destination.</p> <p>Counts include all rail cars (hopper cars and boxcars) moving within a pipeline.</p>
Loads Not Moving	<p>Loaded rail cars for which the railways have not reported a movement event for 48 hours or more whether the rail car is at origin, enroute or at destination.</p>
Port Unloads	<p>Count of rail cars reported by railways as unloaded at the western port destinations of Vancouver, Prince Rupert and Thunder Bay.</p> <p>Unload counts include all rail cars (hopper cars and boxcars) unloaded by all receivers including major port terminals, transloaders and other receivers.</p>
Cars Arrived	<p>Count of rail cars reported as arrived at the destination railway terminal.</p>
Cars Received in Interchange	<p>Count of rail cars received in interchange by each railway within a destination railway terminal. Interchange activity is tracked for the Vancouver and Thunder Bay pipelines as applicable.</p>
Cars Delivered in Interchange	<p>Count of rail cars delivered in interchange by each railway within a destination railway terminal. Interchange activity is tracked for the Vancouver and Thunder Bay pipelines as applicable.</p>
Cars Placed for Unloading	<p>Count of rail cars reported by the railways as placed loaded at the receiver's facility for unloading.</p>
Loads on Wheels at Destination	<p>Count of rail cars that remain under load within the destination railway terminal including rail cars that have been reported as placed for unloading but not yet reported as unloaded.</p>
Waiting Placement for Unloading	<p>Count of rail cars that have been reported as arrived at the destination railway terminal but not reported as placed for unloading by the railway.</p> <p>For the Ports of Vancouver, Prince Rupert and Thunder Bay the count of rail cars waiting placement for unloading is categorized by age – i.e. the elapsed time from arrival at destination to the current report date.</p>